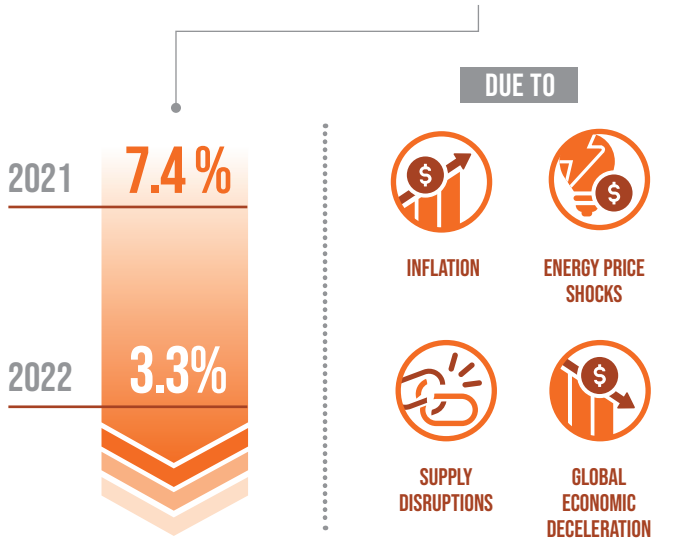




BUILD RESILIENT INFRASTRUCTURE, PROMOTE INCLUSIVE AND SUSTAINABLE INDUSTRIALIZATION AND FOSTER INNOVATION

GLOBAL MANUFACTURING

GROWTH SLOWED FROM



ENERGY-RELATED

CO₂ EMISSIONS

REACHED

36.8 BILLION

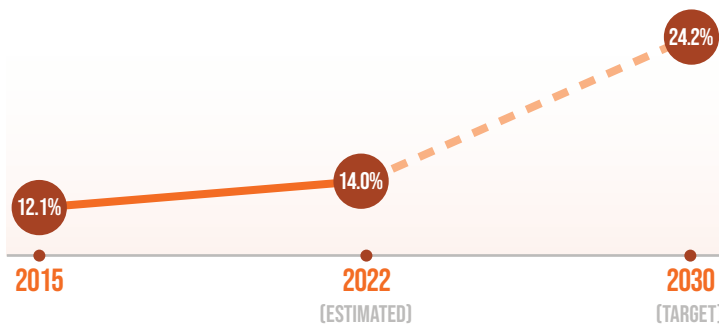
METRIC TONS IN 2022

A RECORD HIGH



LDCs ARE LIKELY TO MISS THEIR 2030 TARGET OF DOUBLING MANUFACTURING SHARE OF GDP

MANUFACTURING VALUE AS A SHARE OF GDP IN LDCs



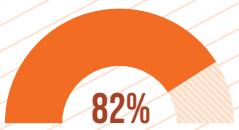
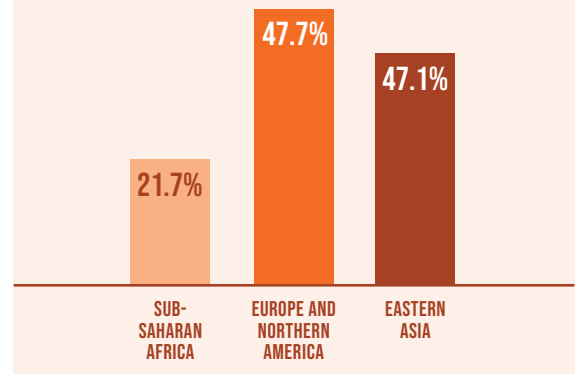
MEDIUM-HIGH AND HIGH-TECHNOLOGY

INDUSTRIES EXPERIENCED

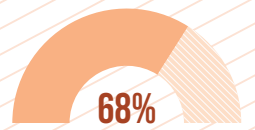
STRONG GROWTH IN 2022

BUT WITH REGIONAL VARIATION

SHARE IN TOTAL MANUFACTURING



SUB-SAHARAN AFRICA



OCEANIA*
(*EXCLUDING AUSTRALIA AND NEW ZEALAND)

95% OF THE WORLD

HAS MOBILE BROADBAND ACCESS [3G OR HIGHER] (2022)

BUT COVERAGE IS ONLY 82% IN SUB-SAHARAN AFRICA AND 68% IN OCEANIA*

