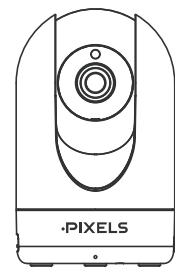


PIXELS Quick Setup Guide

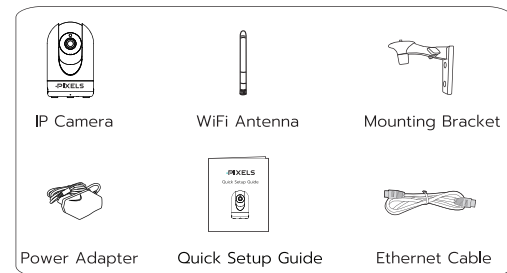


PS-5G 502 Ai WIFI

Setting Up Your Pixels Security Camera

1. Getting Started

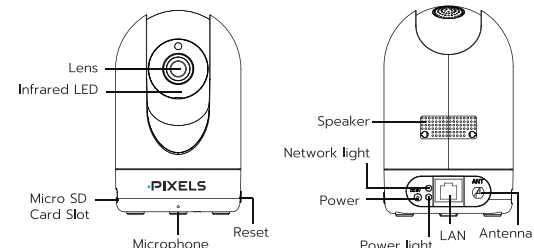
Package Contents



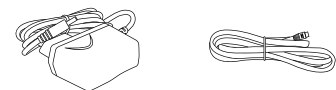
Security Tips

- Please change the camera's password regularly, using a combination of numbers, letters and special characters.
- We recommend that you regularly update your camera with the latest available software and firmware to ensure the best experience with your camera.

B. Physical Description



Warning:



The cords on this product are a potential strangulation hazard. For child safety, please keep these cords out of the reach of children.

3. Setting Up Your Camera: Connection via the Pixels Home App (Recommended)

Before You Get Started

Download and install the Pixels Home APP.



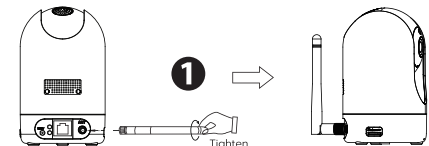
To ensure a smoother video experience on your smart phone, it is recommended that your smart phone meet the following specifications:

- iOS: version 8.1 or higher.
- Android: 4.1 or higher, using a device with a Graphics Processing

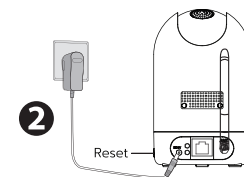
Note: For the best experience, please update the APP to the latest version!

WiFi connection

1. Please tighten the antenna clockwise and make sure it is in a vertical position.

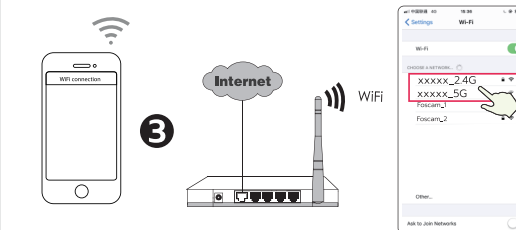


2. Plug the power adapter into the camera, and please wait for a few seconds until hearing the "Ready for WiFi configuration".



Tips: If you didn't hear the voice prompt, press and hold reset for about 10 seconds to reset the camera.

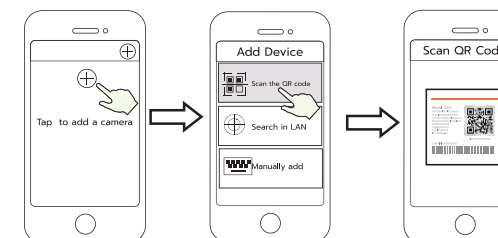
3. Make sure that your smart phone is connected to your WiFi router.



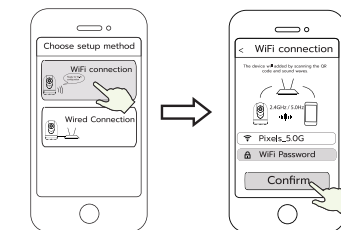
Tips: R2M and R2C cameras only support 2.4GHz WiFi network, you need to connect to the 2.4GHz network if your WiFi router is dual-band. R4M and R4S cameras supports dual-band 2.4GHz and 5GHz WiFi networks, so you can choose the channel with the stronger signal to use. For example, you can select the corresponding channel according to the camera model, and choose your SSID: XXXXX_2.4G or XXXXX_5G.

4. Open the PIXELS HOME APP and please sign up for a Pixels account, or sign in if you have one already.

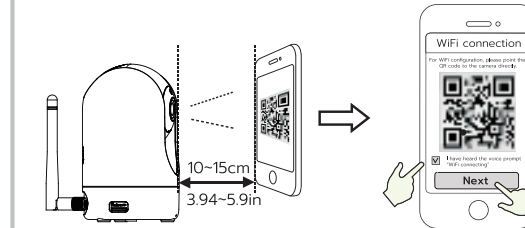
5. After logging into PIXELS HOME APP, select "Tap to add a camera" or "+" icon on the upper right corner, then select "Scan the QR code" and scan the QR code that labeled at the bottom of your camera (see illustrations on next page).



6. In "Choose Setup Method", select "WiFi connection" and enter your WiFi's password and tap "Confirm", afterwards tap the "Configure WiFi connection" button.



7. Please scan the QR code on the phone screen with the camera, then you will hear a voice prompt say "WiFi connecting". Select the checkbox and tap "Next".

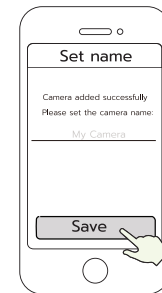


Place the QR code directly in front of the camera

Tick the checkbox and tap "Next"

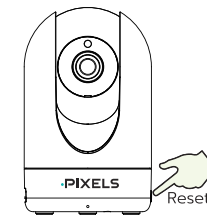
Tips: Please place the QR code on the phone screen about 10 to 15cm (3.94 to 5.9in) away, and if you encounter difficulties you can try to move the screen slowly around 10 - 15cm (3.94 - 5.9in).

8. Wait a few seconds until the camera notifies you that the "Wireless connection succeeded", which means your camera has connected to your WiFi successfully. After, you can set the camera name and tap "Save" in "Set name" interface.

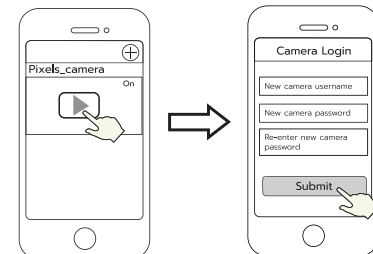


Camera added successfully and the name has been set

Note: If the process of adding a camera fails, please reset your camera and try adding again according to the above method.



9. Tapping on the play button within the video box will jump to the "Camera Login" setting interface. For your security, please set a new username and password for your camera before viewing live video.

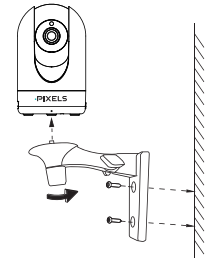


Tap "▶"

Set a new username and password

10. After completing the above steps, you can begin to use the camera.

5. Hardware Installation



1. Screw the mount on the wall with the two screws provided.
2. Loosen the thumb screws to adjust the mount to the desired position. Once the position is set, tighten the screws securely.

6. Important Notice

■ Camera Username & Password

The camera username & password are used to access and manage your camera. Having a strong password can significantly improve the security of your camera.

If you have forgotten either of them, please press the "Reset" button and hold it for more than 10 seconds while the camera is powered on. After hearing the voice prompt, release the button. The camera will automatically reboot and the default settings will be restored.

You can then reconnect the camera by following this Quick Setup Guide.

■ Pixels Cloud Service Account Username & Password

Your Pixels Cloud service account and password may be used to access both the Pixels Home App and the Pixels Cloud service website. Therefore, you can register your account username & password on either one.

■ Storage Media

Your camera supports cloud, NVR (Network Video Recorder), and Micro SD card (only supports FAT-32 format) storage formats. If you wish to record and play back large amounts of video, we recommend using a Foscam NVR device as well.

■ Safety Tips

- Please ensure that the proper power supply is used before using the camera.
- Please install the camera and bracket securely using the screws provided.
- Please use this product within the temperature range. When the ambient temperature is too high or too low, it may cause product failure.
- To avoid the risk of fire or electric shock, please keep your camera in a cool, dry place.
- Please keep the camera out of reach of small children.
- This product is not a toy; children should use the product under adult supervision.
- Check the logs of your Foscam cameras frequently. Pixels Cameras have embedded logs telling you which IP addresses are accessing the camera.

7. Product Performance

WLAN frequency range: 2412MHz - 2472MHz (R2M, R2C)
2412MHz - 2472MHz and
5725MHz - 5875MHz (R4M, R4S)
Maximum transmission power: < 19dBm
Wireless Standard: IEEE802.11b/g/n (2.4GHz)
IEEE802.11a/n/ac (5GHz)
Power Supply: DC 5V 2.0A 10W

ขอบคุณที่ไว้วางใจ เลือกใช้กล้องวงจรปิดไร้สาย PIXELS CCTV หากมีข้อสงสัยเรื่องการใช้งาน

สามารถติดต่อสอบถามเจ้าหน้าที่ได้ที่
Line OA : @Pixelsservice



THE CLARITY
PEACE OF MIND

WIRELESS CCTV

- @Pixelscctv
- Pixelscctv
- www.pixelscctv.com