

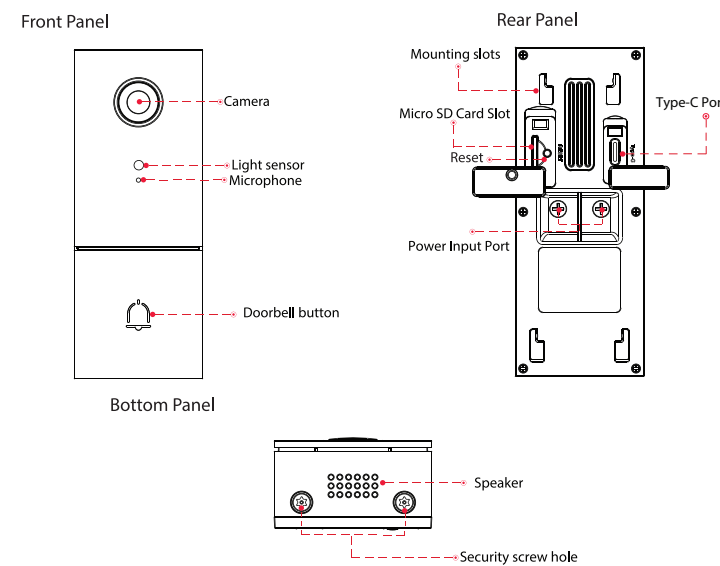
PIXELS

Quick Setup Guide Video Doorbell



PS-5G 501 Ai **WiFi**

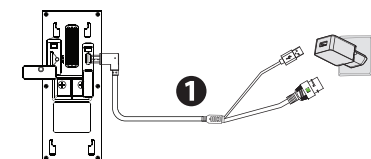
Physical Description



- 2 -

WiFi connection

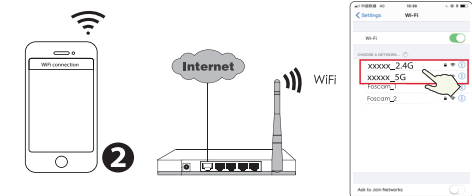
1. Plug the smaller end of the USB cable into the Type-C port on the back of the Video Doorbell, and the larger end into a USB wall charger such as your smartphone charger (DC5V 1.0A power output recommended for faster charging). Please wait for a few seconds until you hear "Ready for WiFi configuration".



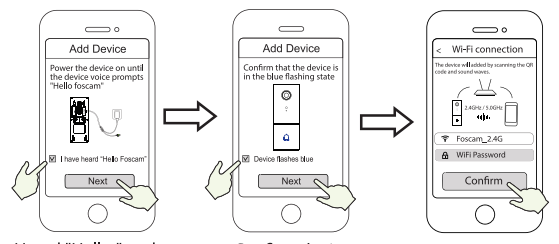
Warning: Please note that it is forbidden to connect the doorbell to AC and Type -C power supply at the same time.

Tips: If you didn't hear the voice prompt, press and hold reset for about 10 seconds to reset the camera.

2. Make sure that your smart phone is connected to your WiFi router.

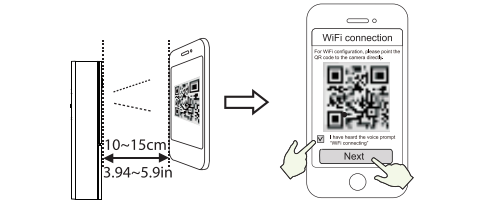


- 4 -



Heard "Hello " and tap "Next"
Confirm device flashes blue
Enter your WiFi's password and tap "Confirm"

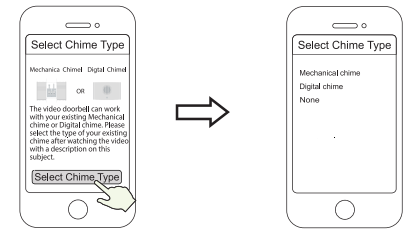
6. Please scan the QR code on the doorbell with the smartphone camera, then you will hear a voice prompt say "WiFi connecting". Select the checkbox and tap "Next".



Tips: Please place the QR code on the phone screen about 10 to 15cm (3.94 to 5.9in) away, and if you encounter difficulties you can try to move the screen slowly around 10 - 15cm (3.94 - 5.9in).

- 6 -

8. In "Select Chime Type", tap "Select Chime Type", and tap "Next". In "Select Chime Type", Select Chime Type and tap "Mechanical chime" or "Digital chime" or "None" (Please select the type of your existing chime).



Tap Select Chime Type
Select the type of your existing chime

Note: Please carefully confirm the existing chime type in your home. If the chime type is selected incorrectly, the transformer and chime at home will be damaged, causing the doorbell and chime to not work properly. Generally, a mechanical chime refers to the ringing sound made by striking a metal with a metal striker, while digital chime refers to the ringing sound made by playing music through a speaker.

If you are still not sure, please watch the chime type description video carefully, or consult our customer service staff.

- 8 -

Video Doorbell Installation

Note:

- Make sure you have installed the PIXELS HOME App, and have scanned the doorbell QR code and completed the "add device" process in the app before beginning the hardware installation process.
- If you choose to use AC power to power the video doorbell, you need to ensure that the specification of the transformer in your home is 8V~24V AC, the minimum power requirement is 8VA.
- If you use DC power to power the video doorbell, you need to prepare a DC12V~30V power adapter, the minimum power requirement is 6W.
- If you use Type-C interface to power the video doorbell, you need to prepare a DC5/1A power adapter, the minimum power requirement is 5W.

Step 1

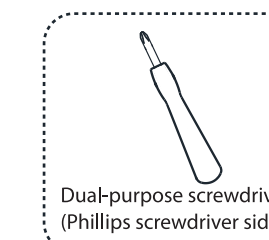
Ring the existing doorbell, make sure it's working and locate the place of your existing chimes in the house.

- 10 -

Step 3

Indoor chimes are generally of two types: mechanical, or digital. If you need to use the existing mechanical chime or digital chime in your home, please install the Power Kit in parallel to the chime. Power Kit is generally used to solve the problem of abnormal ringing of the chime after the video doorbell replaces the traditional doorbell buttons.

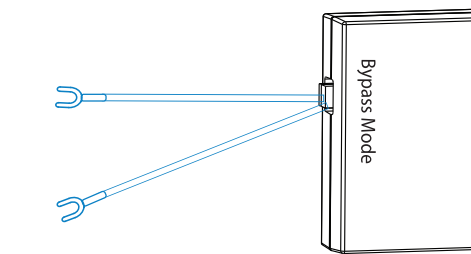
How to distinguish between Digital Chime and mechanical Chime, please scan the following QR code to view.



Dual-purpose screwdriver (Phillips screwdriver side)

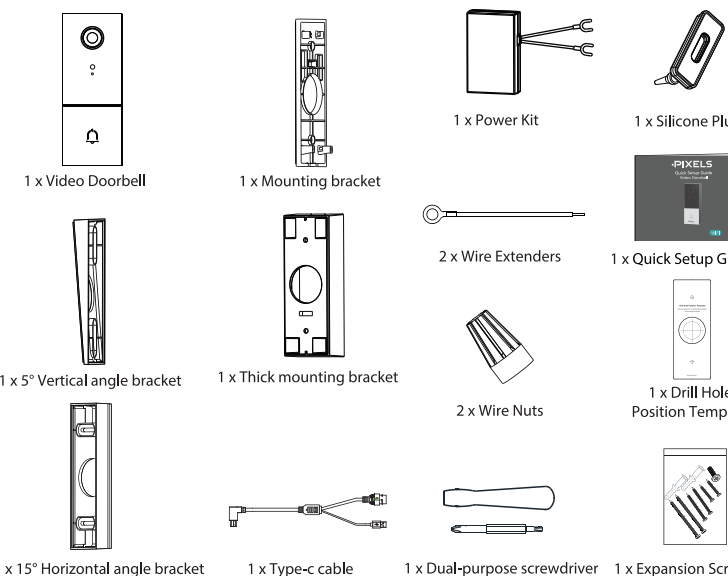
- 12 -

Bypass Model: If you don't want to use the existing chime, you can switch the cable on the Power kit to the bypass interface, and then connect it in parallel to the existing chime. This will short-circuit the chime at your home. You can choose to add WiFi chime, realize the function of chime. If you choose to use the Power Kit by pass mode, be sure to set the chime type to "None" in your APP to avoid damaging the transformer.



- 14 -

What's in the Box



- 1 -

Add Device: Connection via the Pixels Home App (Recommended)

It is strongly recommended that you complete the "add devices" process on the Pixels home app before the doorbell hardware is installed.

Before You Get Started



To ensure a smoother video experience on your smart phone, it is recommended that your smart phone meet the following specifications:

- iOS: version 11 or higher.
- Android: 4.1 or higher, using a device with a Graphics Processing Unit (GPU).

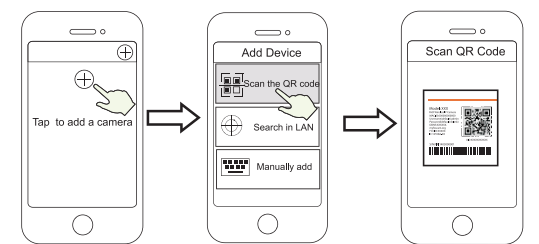
Note: For the best experience, please update the APP to the latest version!

- 3 -

Tips: The camera supports dual-band 2.4GHz and 5GHz WiFi networks, so you can choose the channel with the stronger signal to use. For example, choose your SSID: XXXXX_2.4G or XXXXX_5G.

3. Open the pixels home APP and please sign up for a Pixels account, or sign in if you have one

4. After logging into Pixels APP, select "Tap to add a camera" or "+" icon on the upper right corner, then select "Scan the QR code" and scan the QR code that labeled at the bottom of your camera.

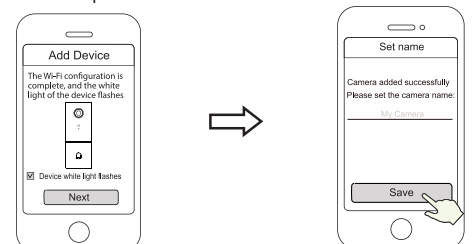


Tap + icon
Select "Scan the QR code"
Scan the QR code, located at the bottom of your camera

5. In "Add Device", if you hear "Hello ", select the checkbox and tap "Next", continue to confirm that the device is in the blue flashing state and tap "Next". In "WiFi connection", enter your WiFi's password and tap "Confirm" (see illustrations on next page).

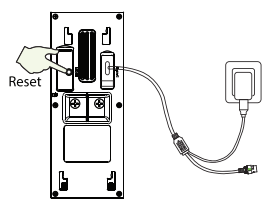
- 5 -

7. Wait a few seconds until the camera notifies you that the "Wireless connection succeeded", which means your camera has connected to your WiFi successfully. After, you can set the camera name and tap "Save" in "Set name" interface.



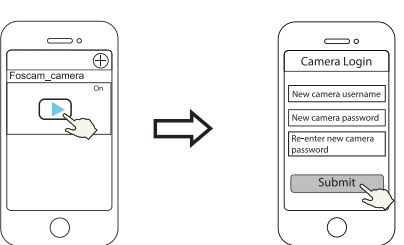
Confirm device white light flashes
Camera added successfully and the name has been set

Note: If the process of adding a camera fails, please reset your camera and try adding again according to the above method.



- 7 -

9. Tapping on the play button in the video box will jump to the "Camera Login" setting interface. For your security, please set a new username and password for your camera before viewing live video.

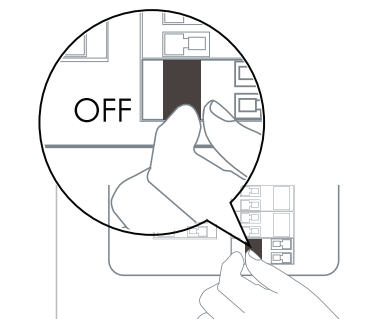


Tap "▶"
Set a new username and password

10. After completing the above steps, you can begin installing your camera.

- 9 -

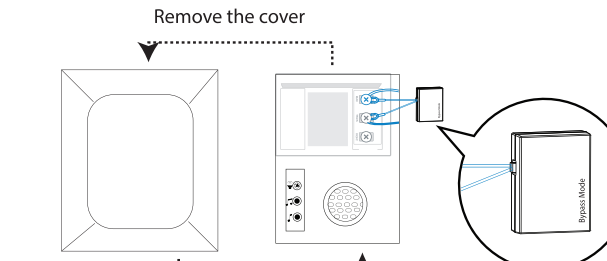
Step 2
Shut off the master circuit breaker in your house. Turn the lights in your home on / off to make sure the electricity in your house is properly shut off.



Warning: If you're not comfortable doing it yourself, consult a qualified electrician.

- 11 -

After removing the cover of the mechanical chime or digital chime, use the wire connection terminal with the Power Kit as pictured. After wiring is completed, replace the cover.

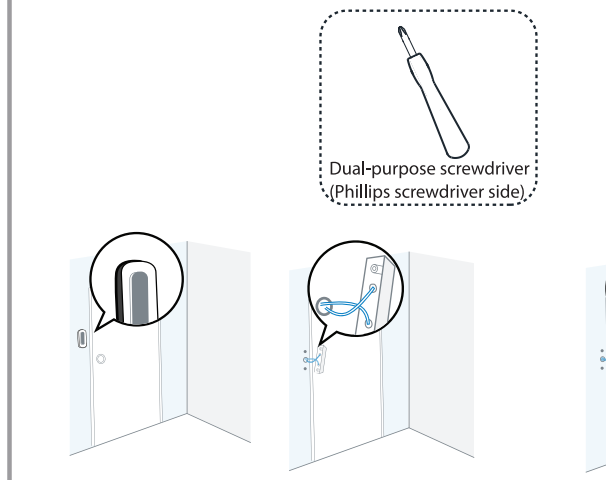


Replace the cover

- 13 -

Step 4
Remove the existing doorbell button near the front door. Pull the two wires out carefully when removing the old doorbell. Straighten the wire ends if necessary.

What's required: Dual-purpose screwdriver



- 15 -

Step 5
Determine the mounting position of the doorbell. First check if you can reuse the existing holes in the wall. Use the drill hole position template to mark the screw holes in the area where the existing doorbell button was located. Place the drill hole position template at least 1.5m (59") high from the ground to ensure that the height of the installed doorbell will be suitable, and then drill the holes (use PH2 drill bit).

Drill Hole Position Template
Power Drill with PH2 Drill Bit

1.8m(71")
1.5m(59")
0.3m(12")

- 16 -

Step 7
Optional: Use the 15° mounting bracket or 5° mounting bracket as a supplementary mounting bracket if you wish to adjust the doorbell camera's field of view to cover more of one side.

15°
5°

- 18 -

Optional Install A
22mm(0.87") Mounting Screws
Wall Mounting Bracket
Without angle bracket

Optional Install B
35mm(1.38") Mounting Screws
Wall 5° Vertical angle bracket
With 5° Vertical angle bracket

Optional Install C
35mm(1.38") Mounting Screws
Wall 15° Horizontal angle bracket
With 15° Horizontal angle bracket

- 20 -

Video Doorbell
Extension Wires and Wire Nuts (Optional)
Dual-purpose screwdriver (Phillips screwdriver side)

Please note that it is forbidden to connect the doorbell to AC and Type -C power supply at the same time.

- 22 -

Step 12
Press the doorbell to test the chime connection. Did your doorbell chime? If yes, it's working! If no, check that wires are secure. Open the Foscam APP again and check if you can view live video.

If not, please remove the doorbell and press the reset button to re-add it in the app.

Reset

- 24 -

Important Notice

■ **Doorbell Username & Password**
The doorbell username & password are used to access and manage your doorbell. Having a strong password can significantly improve the security of your doorbell. If you have forgotten either of them, please press the "Reset" button and hold it for more than 10 seconds while the doorbell is powered on. After hearing the voice prompt, release the button. The doorbell will automatically reboot and the default settings will be restored. You can then reconnect the camera by following this Quick Setup Guide.

■ **PIXELS Cloud Service Account Username & Password**
Your PIXELS Cloud service account and password may be used to access both the PIXELS App and the PIXELS Cloud service website. Therefore, you can register your account username & password on either one.

■ **Storage Media**
Your doorbell supports cloud, NVR (Network Video Recorder), and Micro SD card (supports FAT-32 and ex-FAT format) storage formats. If you wish to record and play back large amounts of video, we recommend using a PIXELS NVR device as well.

- 26 -

Step 6
Use the provided wall anchors if installing in materials such as stucco, brick, or concrete. If installing into a wooden doorframe, there is no need to use the wall anchors.

Anchors

- 17 -

Step 8
Lead the two existing doorbell wires through the central square hole on the bracket before you start mounting.
Insert the two provided screws through the screw holes, or through the 5° Vertical angle bracket / 15° Horizontal angle bracket / Thick mounting bracket, (install the mounting bracket to the 5° Vertical angle bracket / 15° Horizontal angle bracket), and fasten the screws tightly.
What is required: Mounting Bracket / Screw Packs / 5° Vertical angle bracket(Optional) / 15° Horizontal angle bracket (optional) / Dual-purpose screwdriver

Mounting Bracket
5° Vertical angle bracket(Optional)
Screw Packs(Anchors are optional)
15° Horizontal angle bracket(Optional)
Thick mounting bracket
Dual-purpose screwdriver (Phillips screwdriver side)

- 19 -

Optional Install D
45mm(1.77") Mounting Screws
Wall 5° Horizontal angle bracket / 15° Vertical angle bracket
With 5° Vertical angle bracket and 15° Horizontal angle bracket

Optional Install E
22mm(0.87") Mounting Screws
Wall Thick mounting bracket
With Thick mounting bracket This installation method can be used for Type-C cable for DC power supply

Step 9
Connect the wires to the two terminals at the back of the doorbell, then tighten the terminal screws. Wire can connect to any terminal as the electric current is alternating current.
Note: To prevent short-circuit, make sure the wires are not touching each other after connecting them to the terminals. If the wires are too short, use the extension wires and wire nuts provided to make them longer. Use electrical wiring tape to secure the connection if the wall doesn't have space for wire nuts.
What are required: Extension Wires and Wire Nuts (Optional) / Video doorbell / Philips-Head Screwdriver

- 21 -

Step 10
Hook the doorbell on top of the mounting bracket and then snap the doorbell bottom to the bracket. You may hear a "click" sound.

Step 11
Switch the master circuit breaker in your house back to ON.

ON

- 23 -

Step 13
Use the included screwdriver to tighten the anti-theft screw.
What's required: Dual-purpose screwdriver

Dual-purpose screwdriver (Torx screwdriver side)

- 25 -

■ **Safety Tips**

- Please ensure that the proper power supply is used before using the doorbell.
- Please install the doorbell and bracket securely using the screws provided.
- Please use this product within the temperature range -4°F~122°F (-20 C ~50 C). When the ambient temperature is too high or too low, it may cause product failure.
- To avoid the risk of fire or electric shock, please keep your camera in a cool, dry place.
- Please keep the doorbell out of reach of small children.
- This product is not a toy; children should use the product under adult supervision.
- Change your default port to a greater range to help ensure the safety of your connection.
- Check the logs of your PIXELS doorbell frequently. Foscam doorbell have embedded logs telling you which IP addresses are accessing the doorbell.

Product Performance

WLAN frequency range: 2412MHz - 2472MHz and 5725MHz - 5850MHz
Maximum transmission power: < 16dBm
Wireless Standard: IEEE802.11b/g/n (2.4GHz)
IEEE802.11a/n/ac (5GHz)
Power Supply: DC 5V 1.0A SW or AC 8~24V

- 27 -

ขอบคุณที่ไว้วางใจ เลือกใช้กล้องวงจรปิดไร้สาย
PIXELS CCTV หากมีข้อสงสัยเรื่องการใช้งาน

สามารถติดต่อสอบถามเจ้าหน้าที่ ได้ที่
Line OA : @Pixelsservice

SCAN

PIXELS

THE CLARITY
PEACE OF MIND