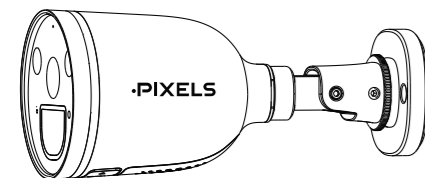


# PIXELS Quick Setup Guide

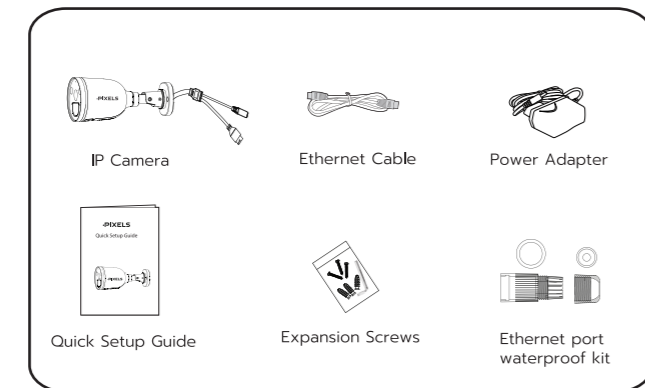


PS-5G 503 Ai **WiFi**

## Setting Up Your Pixels Security Camera

### 1 Getting Started

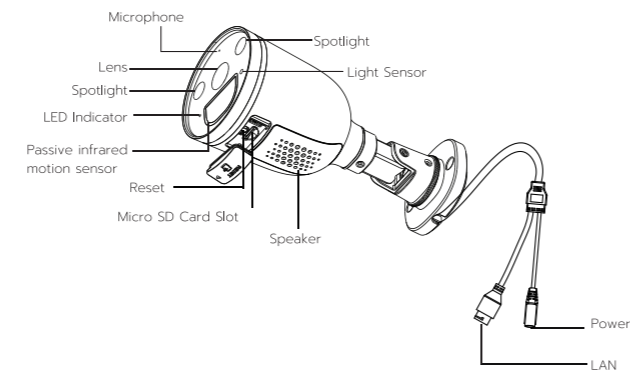
#### Package Contents



#### Security Tips

- Please change the camera's password regularly, using a combination of numbers, letters and special characters.
- We recommend that you regularly update your camera with the latest available software and firmware to ensure the best experience with your camera.

### 2 Physical Description



#### Warning:



The cords on this product are a potential strangulation hazard. For child safety, please keep these cords out of the reach of children.

### 3 Setting Up Your Camera: Connection via the Pixels Home App (Recommended)

#### Before You Get Started

Download and install the Pixels Home APP.



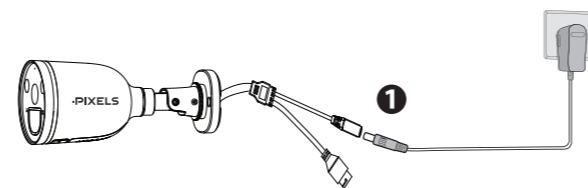
To ensure a smoother video experience on your smart phone, it is recommended that your smart phone meet the following specifications:

- iOS: version 11 or higher.
- Android: 4.1 or higher, using a device with a Graphics Processing Unit (GPU).

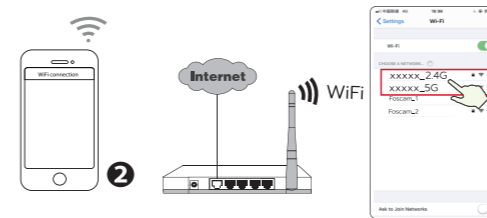
**Note:** For the best experience, please update the APP to the latest version!

#### WiFi connection

1. Plug the power adapter into the camera, and please wait for a few seconds until hearing the "Ready for WiFi configuration".



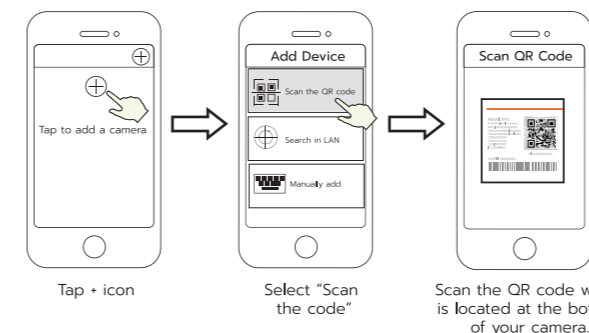
2. Make sure your smart phone is connected to the same WiFi network as the camera.



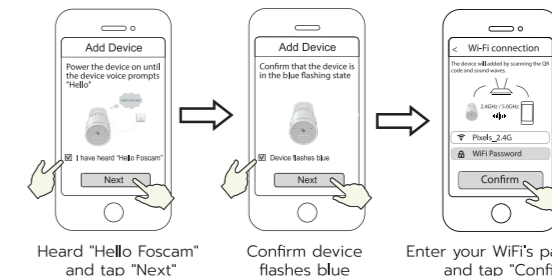
**Tips:** The camera supports dual-band 2.4GHz and 5GHz WiFi networks, so you can choose the channel with the stronger signal to use. For example, choose your SSID: XXXXX\_2.4G or XXXXX\_5G.

3. Open the Pixels Home APP and please register a Pixels Home account, or sign in

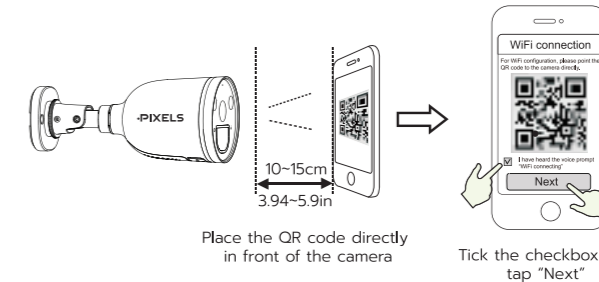
4. After logging into Foscam APP, select "Tap to add a camera" or "+" icon on the upper right corner, then select "Scan the QR code" and scan the QR code labeled on the bottom of your camera.



5. In "Add Device", if you hear "Hello", select the checkbox and tap "Next", continue to confirm that the device is in the blue flashing state and tap "Next". In "WiFi connection", enter your WiFi's password and tap "Confirm".

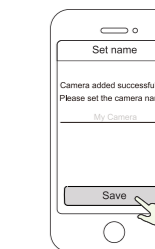


6. Please scan the QR code on the doorbell with the smartphone camera, then you will hear a voice prompt say "WiFi connecting". Select the checkbox and tap "Next".



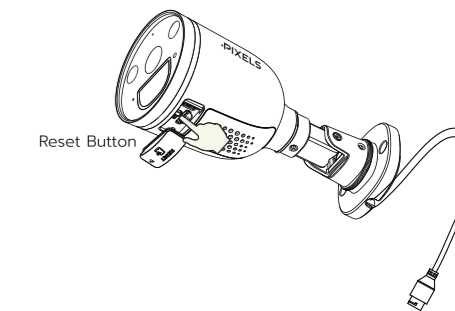
**Tips:** Please place the QR code on the phone screen about 10 to 15 cm (3.94 to 5.9in) away, and if you encounter difficulties you can try to move the screen slowly around 10 - 15cm (3.94 - 5.9in).

7. Wait a few seconds until the camera notifies you that the "Wireless connection succeeded", which means your camera has connected to your WiFi successfully. After, you can set the camera name and tap "Save" in "Set name" interface.

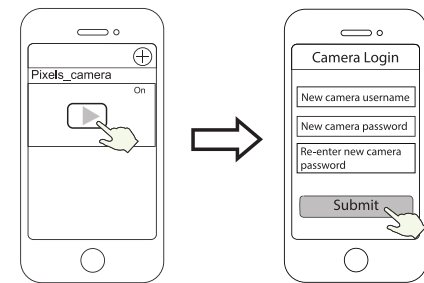


Camera added successfully and the name has been set

**Note:** If the process of adding a camera fails, please reset your camera and try adding again according to the above method.



8. Tapping on the play button in the video box will jump to the "Camera Login" setting interface. For your security, please set a new username and password for your camera before viewing live video.

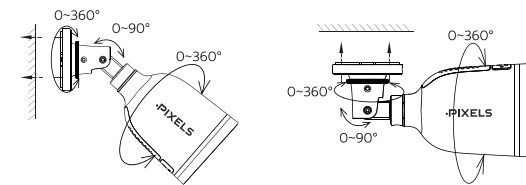


Tap "▶"

Set a new username and password

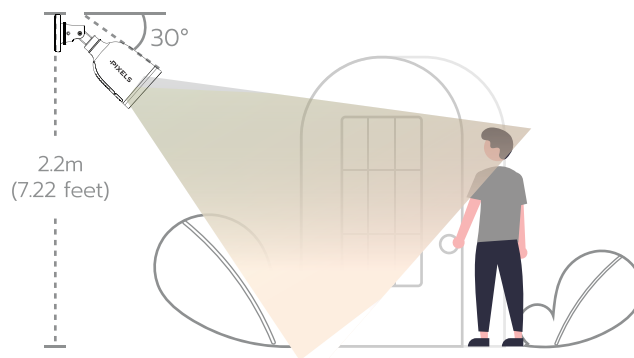
9. After completing the above steps, you can begin using your camera.

## 4 Hardware Installation



Point the camera at the desired location and use the screws provided to mount it.

For the best product experience, we suggested installation height of Spotlight camera: 2.2m (7.22 feet), camera downward tilt angle 30°.



### Please Note:

Ensure that rain or water will not reach the connector ports at the end of the pig tail wiring. These connectors are not weather-resistant.

## 5 Important Notice

### Camera Username & Password

The camera username & password are used to access and manage your camera. Having a strong password can significantly improve the security of your camera.

If you have forgotten either of them, please press the "Reset" button and hold it for more than 10 seconds while the camera is powered on. After release the button. The camera will automatically reboot and the default settings will be restored.

You can then reconnect the camera by following this Quick Setup Guide.

### Pixels Cloud Service Account Username & Password

Your Pixels Cloud service account and password may be used to access both the Pixels Home App and the Pixels Cloud service website. Therefore, you can register your account username & password on either one.

### Storage Media

Your camera supports cloud, NVR (Network Video Recorder), and Micro SD card (supports FAT32 and exFAT format) storage formats. If you wish to record and play back large amounts of video, we recommend using a Pixels NVR device as well.

## Safety Tips

- Please ensure that the proper power supply is used before using the camera.
- Please install the camera securely using the screws provided.
- Please use this product within the temperature range. When the ambient temperature is too high or too low, it may cause product failure. To avoid the risk of fire or electric shock, please keep your camera connectors in a cool, dry place.
- Please keep the camera out of reach of small children.
- This product is not a toy; children should use the product under adult supervision.
- Change your default port to a greater range to help ensure the
- Check the logs of your Pixels cameras frequently. Pixels Cameras have embedded logs reminding telling you which IP addresses addresses are accessing the camera.

## 6 Product Performance

WLAN frequency range: 2412MHz - 2472MHz and 5725MHz - 5850MHz

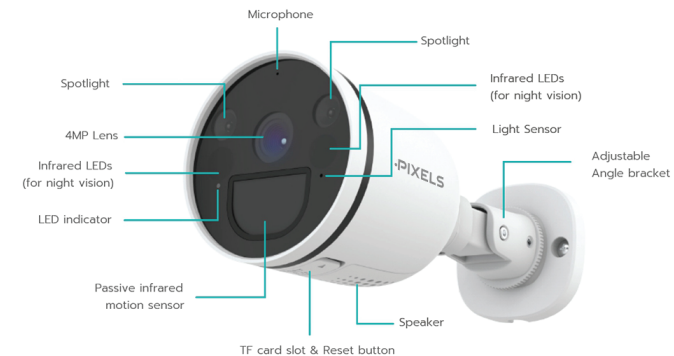
Maximum transmission power: < 16dBm

Wireless Standard: IEEE802.11b/g/n (2.4GHz)

IEEE802.11a/n/ac (5GHz)

Power Supply: DC 12V 1.0A 12W

## Appearance Accessories



ขอบคุณที่ไว้วางใจ เลือกใช้กล้องวงจรปิดไร้สาย PIXELS CCTV หากมีข้อสงสัยเรื่องการใช้งาน

สามารถติดต่อสอบถามเจ้าหน้าที่ ได้ที่  
Line OA : @Pixelsservice



THE CLARITY  
PEACE OF MIND

WIRELESS CCTV

 @Pixelscctv

 Pixelscctv

 www.pixelscctv.com