



新聞稿

Press Release

PR021/24
18 April 2024

MTR's "Station Rail Voyage" Exhibition at Hung Hom Station Unveils Retired Trains and Over a Hundred Railway Artifacts Sharing Railway Moments with the Community

The MTR Corporation is delighted to present the "Station Rail Voyage" exhibition, a brand new railway experiential gallery at Hung Hom Station, showcasing a treasure trove of retired trains including the legendary "Yellow Head" which marked the start of electrified railway service on the East Rail Line, train components and a remarkable collection of historical artifacts. The exhibition will take visitors down the memory lane of Hong Kong's railway service and offer a glimpse at the behind-the-scene operations of railways. On the 45th anniversary of MTR Corporation, the exhibition is a place to relish our treasurable railway moments. The "Station Rail Voyage" exhibition will be open from 27 April 2024 till the end of the year for members of the public who have pre-registered online.

The MTR Corporation has transformed the relevant section of Hung Hom Station to provide an immersive journey of railway experience. Entitled "Station Rail Voyage" to allude to the encounters that occur at railway stations, the exhibition at the Intercity Through Train area of the station is divided into three main distinct zones. Each zone presents a unique theme with captivating content and interactive experience. The themes and contents of these three zones are:

- **"Decoding Rail"** showcases and introduces an array of signal lights and train components. It offers insights into the lesser-known aspects of railway knowledge that contribute to the MTR's safe and reliable train services. It also displays the RADO clock which was installed at stations in the early days of the Mass Transit Railway service.
- **"Years on the Rail"** focuses on noteworthy items and stories gathered by railway staff across different eras, documenting the contributions made by these "Railway-ers" to the evolution of railways over the years. There is also a close encounter opportunity with the driving cabin of a modernisation train "M-Train" in the exhibition area.
- **"Next Station... Memories"** is the exhibition's highlight, bringing together two retired trains, the iconic first-generation electric train "Yellow Head" and the Mid-life Refurbishment train "MLR" of the East Rail Line, as well as the Diesel Electric Locomotive No. 56 "I.B. Trevor". Visitors can capture memorable moments with these historical trains and locomotive, experience the nostalgia of past railway journeys and witness the evolution in train development.

-more-

The exhibition also offers an array of engaging interactive elements. Visitors can get up close to different types of trains and listen to station announcements highlighting the Corporation's operations around the world. To enhance the experience further, visitors can even mimic station staff from different eras and capture memorable photos at the photo booth. (Please refer to the appendix for further information.)

Each visitor will also receive a randomly distributed retro-style ticket card as a souvenir, allowing them to take home a cherished memento of their railway journey experience. Furthermore, at the exhibition venue, visitors can also purchase various MTR souvenirs and the limited edition "MTR Ticket Classic Album" specifically introduced for the exhibition.

In addition to the "Station Rail Voyage" exhibition, the restaurants located on the U3 level of Hung Hom Station have embraced railway elements to create a unique dining experience. Inspired by the iconic red and blue colours of the "MLR" and train components, the restaurants are adorned with train frames and train compartment seats. Furthermore, the station concourse has introduced various thematic-features shops to enrich passengers' journeys. These shops provide a one-stop experience of transportation, culture, cuisine, and leisure, ensuring a comprehensive and fulfilling experience for customers.

"As an integral part of our city fabric, the railway has played an instrumental role in driving urban and economic development and fostering community connections. The 45th anniversary of MTR serves as an occasion for us to celebrate 45 years of togetherness. The 'Station Rail Voyage' exhibition serves as a special tribute to Hong Kong's rich railway history and the remarkable stories of the 'Railway-ers'. Through diverse experiences, visitors have the opportunity to relive unforgettable railway moments and gain a deeper understanding of the railway development in Hong Kong. This exhibition also breathes new life into retired trains, allowing them to forge a 'second life' by engaging with the community in unique ways and continuing to serve the public," said Dr Rex Auyeung, Chairman of MTR Corporation.

Starting from 27 April 2024, the "Station Rail Voyage" exhibition will be open to the public for free visits on Saturdays, Sundays and public holidays by reservation. Reservations can be made up to 30 days in advance through the website: <https://stationrailvoyage.mtr.com.hk> from 10:00 am on 20 April 2024. The Corporation will reserve the weekday slots for local community groups by invitation in the initial two months of opening. Each session of visit will have a duration of 75 minutes. To ensure a smooth and safe visiting experience, the capacity for each session is set at approximately 100 visitors.

The "Station Rail Voyage" exhibition has temporarily converted a portion of the Intercity Through Train area at Hung Hom Station into a dedicated exhibition venue. The Corporation expresses deep gratitude to various government departments whose support has facilitated the smooth and successful launch of the exhibition.

-End-

About MTR Corporation

To Keep Cities Moving, MTR makes encounters happen and rendezvous for a more connected tomorrow. As a recognised world-class operator of sustainable rail transport services, we are a leader in safety, reliability, customer service and efficiency.

MTR has extensive end-to-end railway expertise with 45 years of railway projects experience from design to planning and construction through to commissioning, maintenance and operations. Going beyond railway delivery and operation, MTR also creates and manages dynamic communities around its network through seamless integration of rail, commercial and property development.

With more than 50,000 dedicated staff*, MTR carries over 10 million passenger journeys worldwide every weekday in Hong Kong, Mainland China, Australia, the United Kingdom and Sweden. Together, we Go Smart and Go Beyond.

For more information about MTR Corporation, please visit www.mtr.com.hk

*includes our subsidiaries, associates and joint ventures in Hong Kong and worldwide

Photo Caption:

1. Dr Rex Auyeung, Chairman of MTR Corporation (4th left); Mr Lam Sai-hung, Secretary for Transport and Logistics (3rd right); Ms Jeny Yeung, Managing Director – Hong Kong Transport Services of MTR Corporation (1st right); Ms Linda Choy, Corporate Affairs and Branding Director of MTR Corporation (1st left) and Hon Chan Han-pan, Legislative Council Member (3rd left); Hon Yick Chi-ming, Legislative Council Member (2nd right) and Ir Hon Zhang Xinyu, Legislative Council Member (2nd left) officiated at the opening ceremony of “Station Rail Voyage” exhibition.





2. The first-generation electric train "Yellow Head" and the Mid-life Refurbishment train "MLR" of the East Rail Line, as well as the Diesel Electric Locomotive No. 56 "I.B. Trevor" are gathered at the platform at Hung Hom Station, enabling visitors to capture memorable photos and revisit railway moments.





3. Visitors can take close-up photos with the MTR Modernisation Train head.



4. The “Station Rail Voyage” exhibition showcases an array of signal lights and train components, introducing the operational principles of railway signalling systems and the functions of train components. The exhibition also displays the RADO clock which was installed at stations in the early days of the Mass Transit Railway service, and a collection of items and stories gathered by railway staff across different eras. Visitors have the opportunity to explore lesser-known railway knowledge and the invaluable contributions made by these dedicated “Railway-ers” to railway development.



Appendix

Station Rail Voyage Exhibition

Exhibition Period	Open to the public for free visits from 27 April 2024 on Saturdays, Sundays and public holidays by reservation
Exhibition Venue	Hung Hom Station
Website	https://stationrailvoyage.mtr.com.hk 



Introduction of Exhibition Zones

Zone 1: "Decoding Rail"

Delve into lesser-known railway trivia through three thematic areas, namely "1, 2, 3 Signal Lights", "Peek and Seek the Mechanics", and "Signage-pedia". The signals, train structures, as well as various signs offer you a close-up and behind-the-scenes look into the fascinating world of railway operations.

- **"1, 2, 3 Signal Lights"**

Embark on a journey into the signalling system, the central nervous system of railway operations. Through a captivating display of different types of signal lights, visitors can gain insights into how this system maintains the reliable operation of railways and ensures the smooth transportation of passengers to every "station" in their journey of life.

- **"Peek and Seek the Mechanics"**

Unveil the secrets behind the Phase 2 Light Rail Vehicle and the Modernisation Train (M-Train). The 1:1 intricate train diagram on the wall showcases real train components, enabling visitors to explore the composition of trains and understand the function of different parts.



- **“Signage-pedia”**

In this zone, visitors will once again encounter familiar sights such as the classic “Swiss Railway Clock” and the “RADO Clock” that grace the stations. Installed at stations in the early days of the Mass Transit Railway service, the RADO clock reports the time to passengers. The “Cesium Frequency Standard Clock” of RADO is at the heart of the railway’s time system to provide uniform time reporting. The thematic wall displays various types of signs and tools, including the name plate of Diesel Electric Locomotive No.59, targets, and the split-flap display that was once installed on platforms. These classic elements come together to add touches of nostalgia.



Zone 2: “Years on the Rail”

Step into a world of railway exploration as you venture through “Then and Now”, “New Milestone”, “Our Family”, “The Broadcast Cloister”, “Railway Staff’s Magic Pockets”, and “I Could Be Driving MTR”. Immerse yourself into a collection of meticulously curated exhibits and captivating photographs, each offering a glimpse into the rich tapestry of railway stories.

- **“Then and Now”**

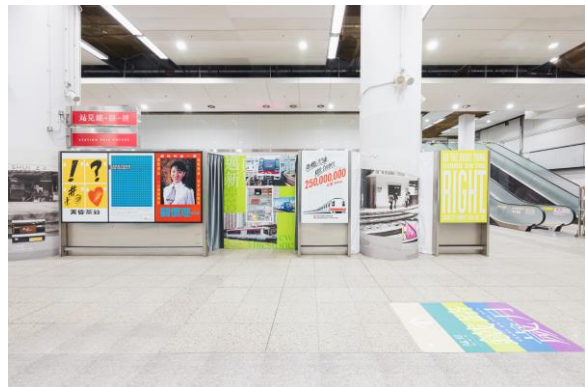
Delve into the past as you explore a treasure trove of accessories worn by former staff of MTR Corporation and the Kowloon-Canton Railway Corporation before the rail merger. Revisit commemorative artifacts celebrating the Mass Transit Railway service commencement in 1979 and rail merger in 2007.

- **“New Milestone”**

Embark on a journey through significant milestones as you marvel at a selection of items that mark anniversaries, new railway lines ground-breaking and the opening of new railway lines.

- **“Our Family”**

Admire a unique of personal items collected from generations of “Railway-ers” including rare artifacts like staff identification in the 1950s and salary advice in the 1980s. Let’s explore short stories about the staff’s contributions to railway development.



- **“The Broadcast Cloister”**

Step into a realm of auditory nostalgia as you listen to the familiar yet now discontinued MTR announcements. Allow the echoes of station announcements around the world to transport you, providing a journey to the expansive world of MTR.



- **“Railway Staff’s Magic Pockets”**

Engage your senses in an interactive experience that invites you to explore the enchanting world hidden within the magic pockets of train captains and station staff. With a simple flip of small boxes attached to the train handrails, discover the essential tools they carry for diverse needs of their daily duties.



- **“I Could Be Driving MTR”**

Meet our MTR Modernisation Train head, popularly known as “M-Train”, as it comes to life in a three-dimensional visual display. Get a close-up look and capture memorable moments with the train.



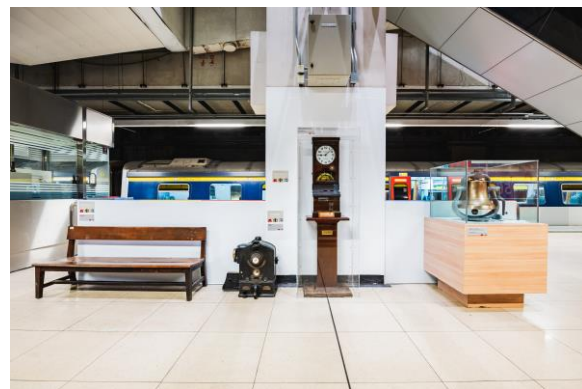
Zone 3: "Next Station... Memories"

Step onto the platform of Hung Hom Station and witness a remarkable sight – a union of three retired trains, the first-generation electric train "Yellow Head" and the Mid-life Refurbishment train "MLR" of the East Rail Line, as well as the Diesel Electric Locomotive No. 56 "I. B. Trevor". The extraordinary event allows visitors to relive their excitement of their past journeys, evoking cherished memories of railway adventures.

As you explore the platform, encounter a collection of historically significant exhibits that evoke memories of unforgettable moments during past train rides. The departure bell, time clock, and original wooden bench from "KCRC", transport visitors back in time, evoking nostalgic recollections of train travel experiences.

- **"Instant Photo Booth" Zone**

Immerse yourself in the railway world and become part of the team. Choose from a selection of staff uniforms representing different eras and themes, and capture a moment frozen in time.



- **Video Zone**

Through a diverse perspective of videos, delve deeper into the curation of the exhibition and uncover stories of the dedicated "Railway-ers".