

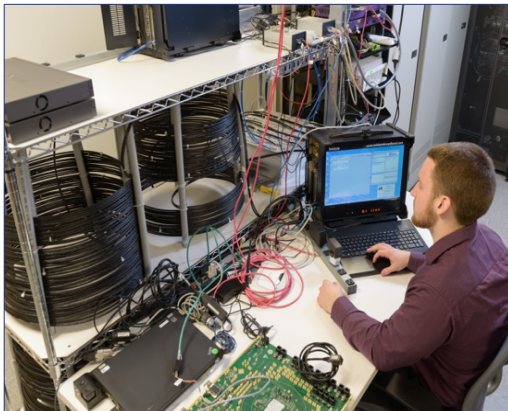


# DSL & Gfast Testing

## DSL & Gfast Testing Services

Our DSL & Gfast Testing Services are a collaborative test program that brings together industry leaders in the ITU-T's technology to foster high quality, interoperable chipsets and systems. We are the approved Gfast test laboratory that offers the Broadband Forum Gfast Certification.

The testing leverages advanced test tools and our Test Sentinel automation platform to quickly and efficiently support the Gfast certification testing, shortening your test cycles and quickly progress your products to the certified status.



### Test Solutions for:

- Reference Designs
- DPU Device
- Home Gateways and CPE's
- Chipsets
- Hand-held Testers and Test Tools

## DSL & Gfast Test Software

Our Testing Services provides services for companies wishing to participate in the Broadband Forum Gfast Certification Program or Gfast Interoperability Plugfests. Testing can be completed on a variety of device types, including:



- Reference Designs
- DPU Devices
- Home gateways and customer premises equipment (CPE)
- Gfast chipsets
- Hand-held testers and test tools

## Key Benefits

- Increased confidence in your product.
- Save money by reducing time to market.
- Use industry recognized test reports for sales and certifications.
- Access to custom test equipment and software saving you time and money.
- Ability to shape our roadmap to better serve industry needs.
- Ability to test multiple standards against globally recognized products all in one lab.
- Acts as an extension of in-house test labs providing debugging and technical expertise.
- Participate in Plugfest test events, including Broadband Forum Chipset and System Integrator.

### Contact:

Lincoln Lavoie

[lylavoie@iol.unh.edu](mailto:lylavoie@iol.unh.edu)

+1-603-674-2755

## Learn More Today!

[www.iol.unh.edu](http://www.iol.unh.edu)

