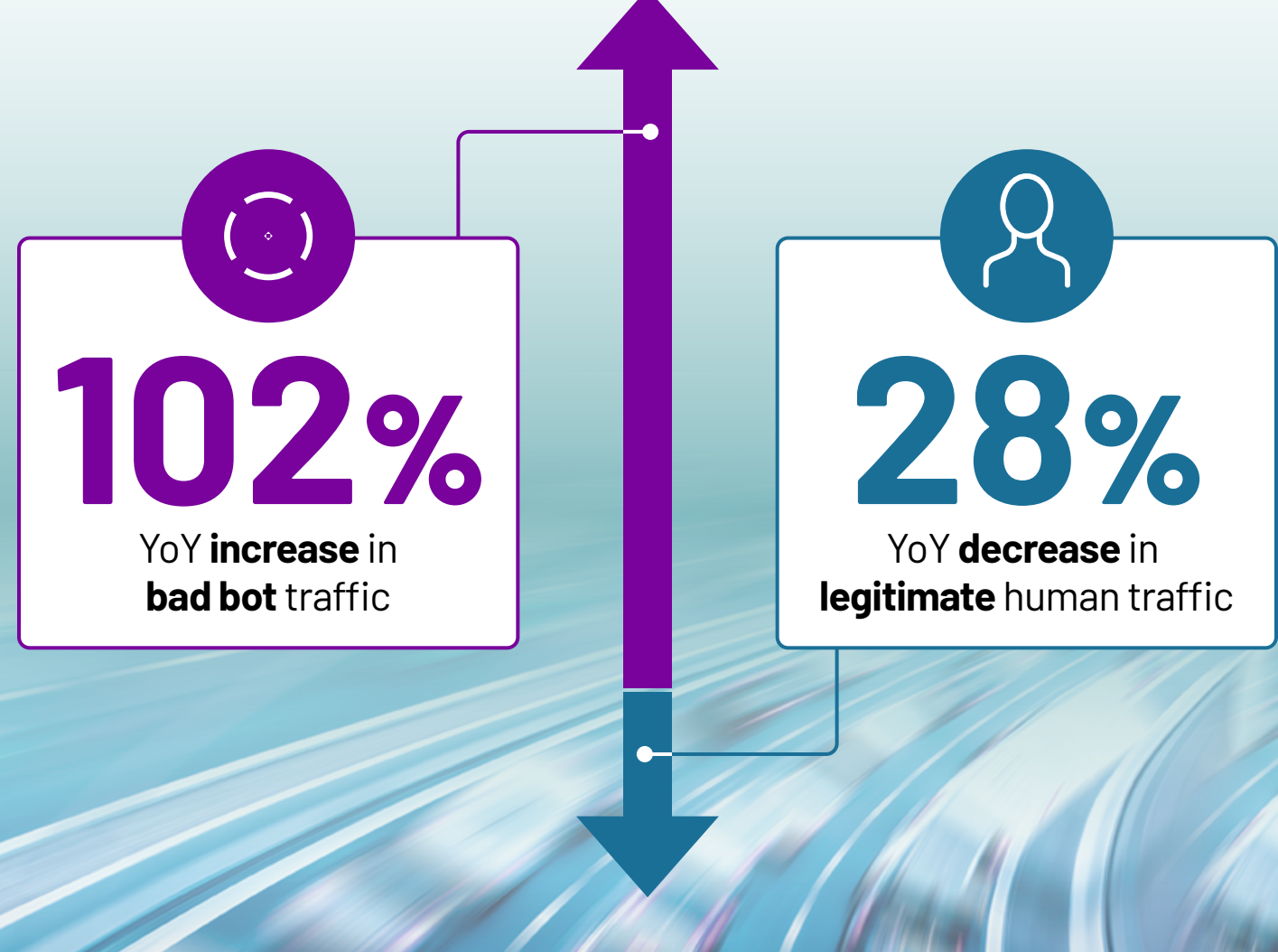


# 2023 Enterprise Bot Fraud Benchmark Report

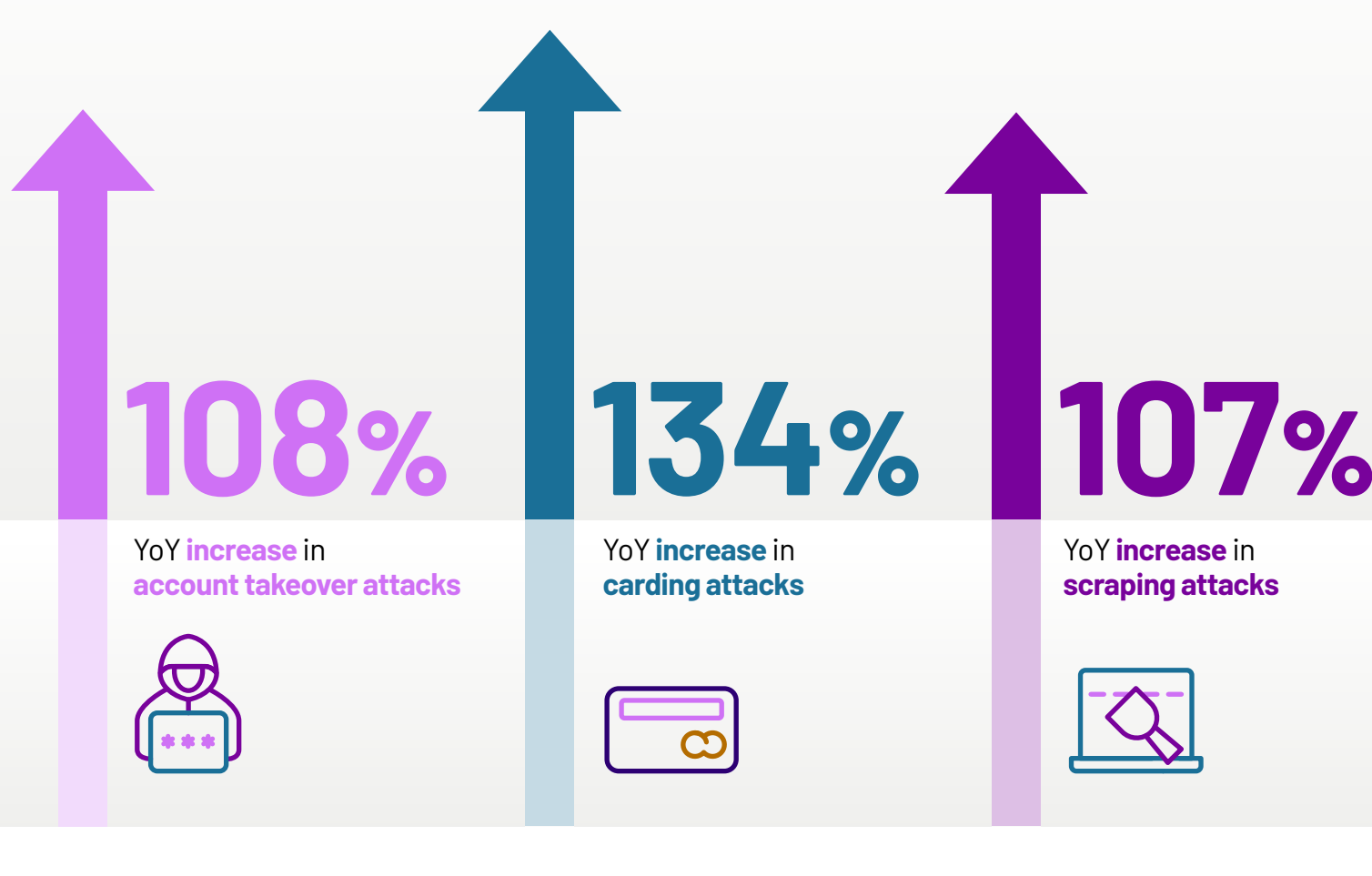
The annual HUMAN Enterprise Bot Fraud Benchmark Report provides insights into automated attack trends across enterprise use cases, including account takeover, brute forcing, carding, credential stuffing, inventory hoarding, scalping, and web scraping.

## Bad bot traffic increased overall even as people spent less time online



## Automated attacks continued to grow

From 2021 to 2022:

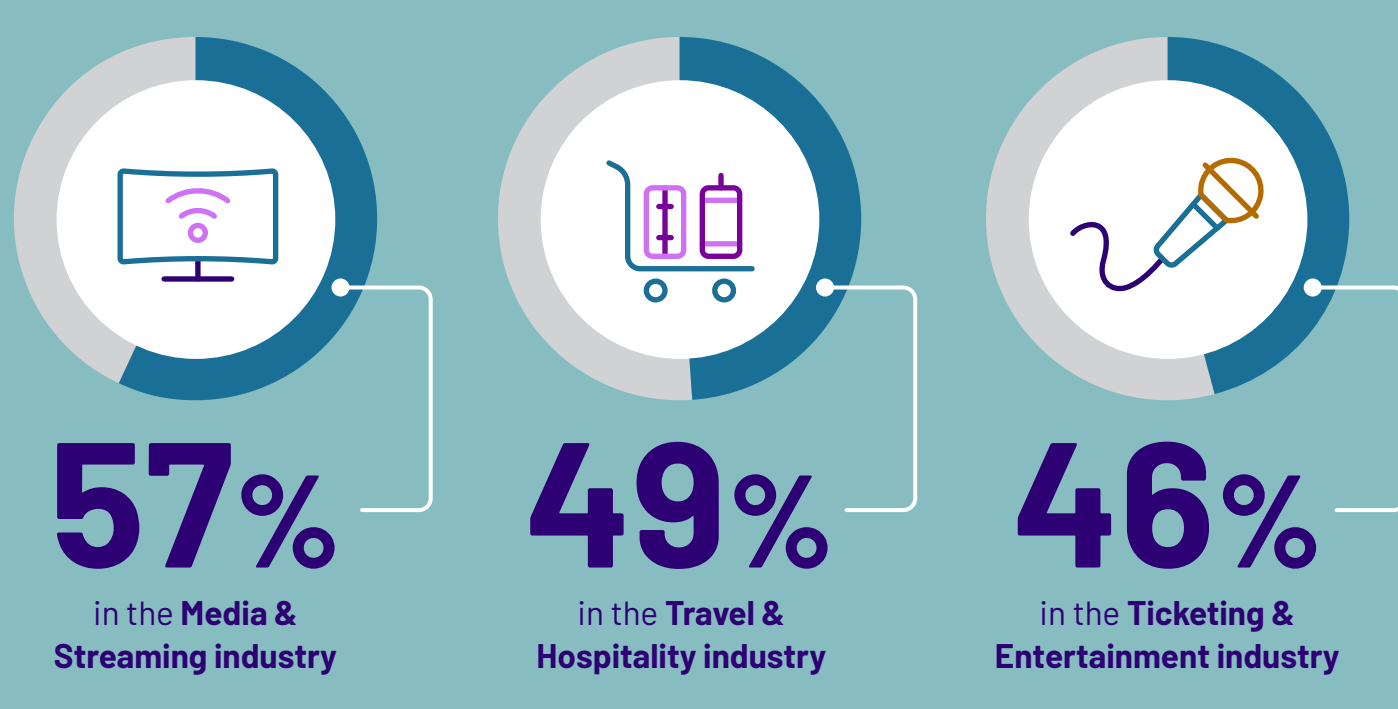


In the second half of 2022 as compared to the first half:

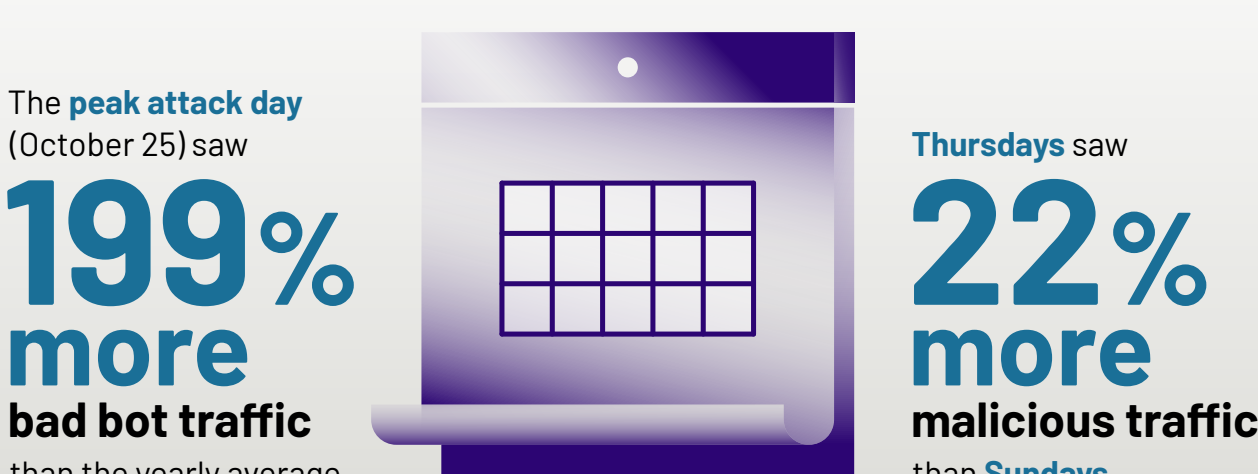


## Certain industries experienced more bot attacks than others

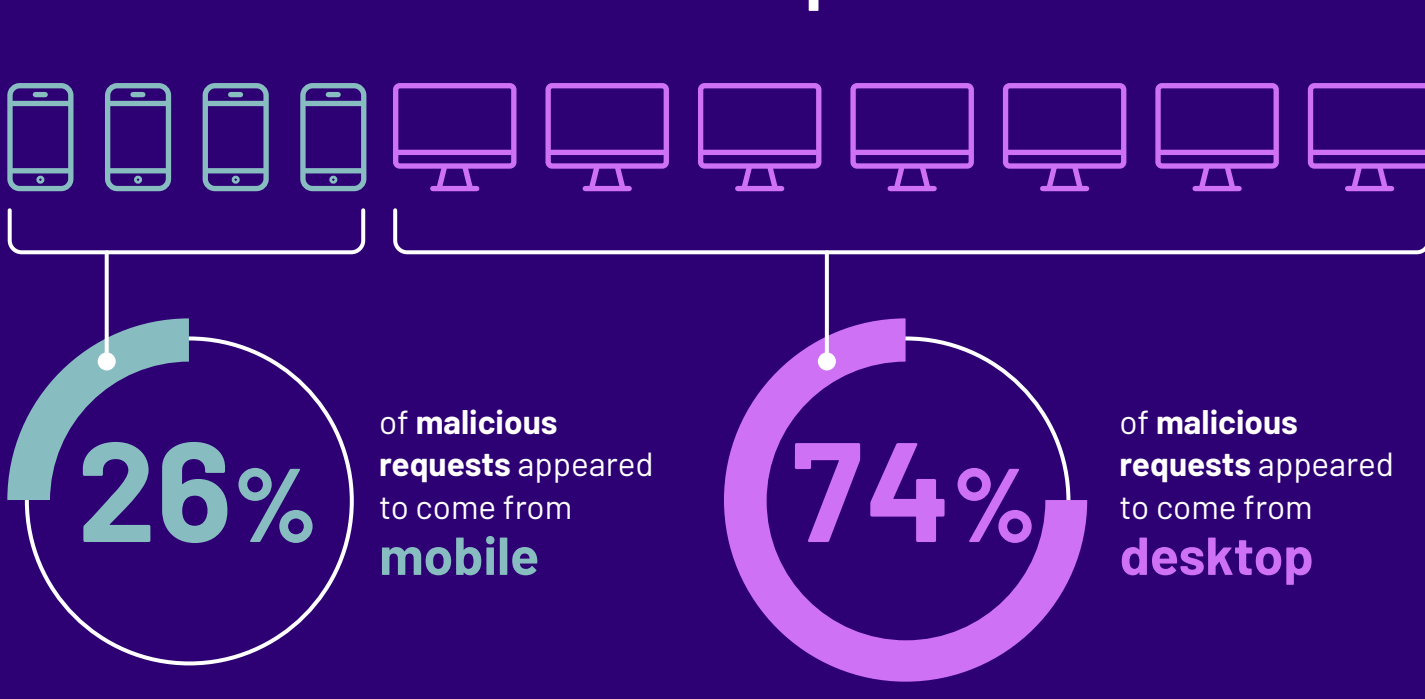
Of traffic to online businesses, bad bots accounted for:



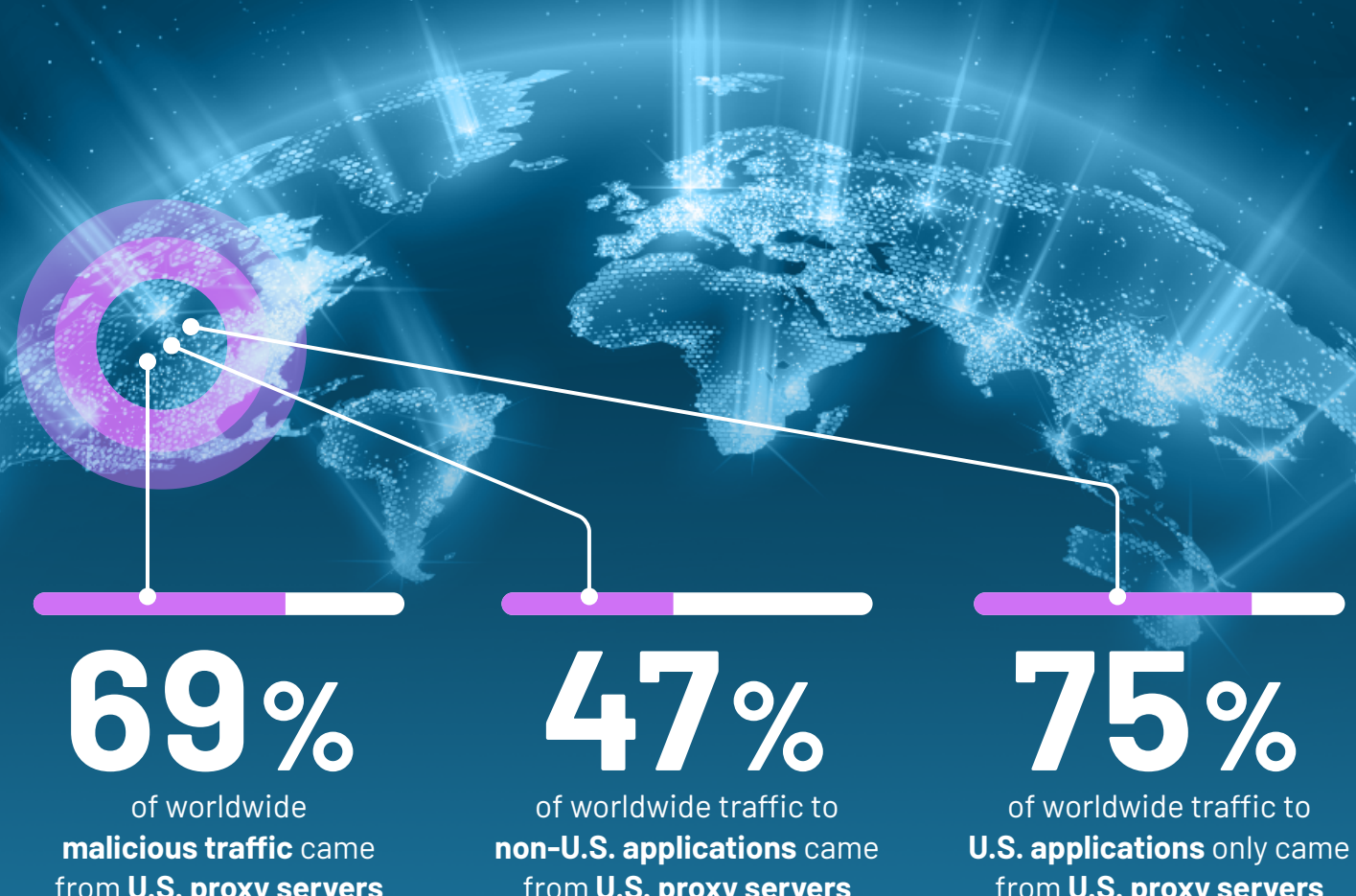
## Bad actors conducted more bot attacks on certain days



## Enterprise attackers prefer to hide behind desktop devices



## Attackers will typically utilize proxy and anonymizing servers in the region they target



To see more enterprise bot attack trends, download the [2023 Enterprise Bot Fraud Report](#).