
GfK Africa / Oceania / Small Island States Edition 2022/2023

The update includes
thousands of changes
to postcode and
administrative levels.



Digital maps Africa 2022

New additions per country



Mali

Whole country re-created based on more granular base data.

One new administrative layer available:

- **municipalities** (701 features)



South Africa

Added 130 new 4-digit postcode areas

One administrative layer discontinued:

- **small areas**



Malawi

Whole country re-created based on more granular base data.

One new administrative layer available:

- **traditional authorities** (440 features)

Two new postcode layers available:

- **3-digit postcode areas** (33 features)
- **6-digit postcode areas** (455 features)

Digital maps Africa 2022

New additions per country



Uganda

One new postcode layer available:

- **3-digit postcodes areas** (132 features)



Sierra Leone

Whole country re-created based on more granular base data.

Two new administrative layers available:

- **chiefdoms** (176 features)
- **counties** (1.316 features)



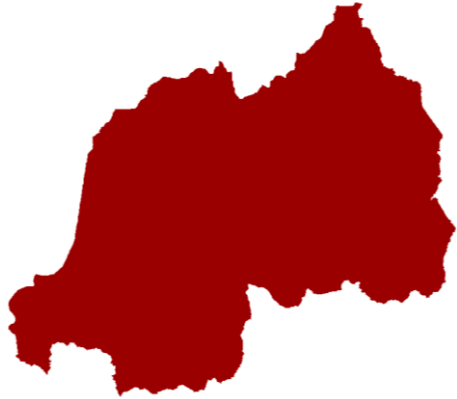
Mauritius

One new postcode layer available:

- **5-digit postcode areas** (97 features)

Digital maps Africa 2022

New additions per country



Rwanda

Whole country re-created based on more granular base data.

One new administrative layer available:

- **cells** (2.146 features)



Kenya

Whole country re-created based on more granular base data.

Two new administrative layers available:

- **sub-counties** (304 features)
- **wards** (1.450 features)



Zambia

Whole country re-created based on more granular base data.

One new administrative layer available:

- **wards** (1.421 features)

Digital maps Oceania 2022

New additions per country



Australia

Whole country re-created based updated base data.

- new census geometries



New Zealand

Whole country re-created based updated base data.

- new census geometries

Digital maps Small Island States 2022

New additions per country



- 23 countries
- 17 new layers (9 admin, 8 postal)
- 6 discontinued layers (all admin)

New layer	Number of features
American Samoa districts	5
American Samoa 5-digit postcode areas	1
Federated States of Micronesia enumeration areas	394
Federated States of Micronesia 5-digit postcode areas	4
French Polynesia subdivisions	5
Niue villages	14
Northern Mariana Islands 5-digit postcode areas	3
Pitcairn postcode units	1
Samoa regions	4
Samoa political districts	11
Samoa 4-digit postcode areas	212
St Helena Ascension Tristan de Cunha postcode units	3
St Pierre and Miquelon municipalities	2
St Pierre and Miquelon 5-digit postcode areas	1
Tonga census units	644
Wallis and Futuna districts	5
Wallis and Futuna 5-digit postcode areas	3



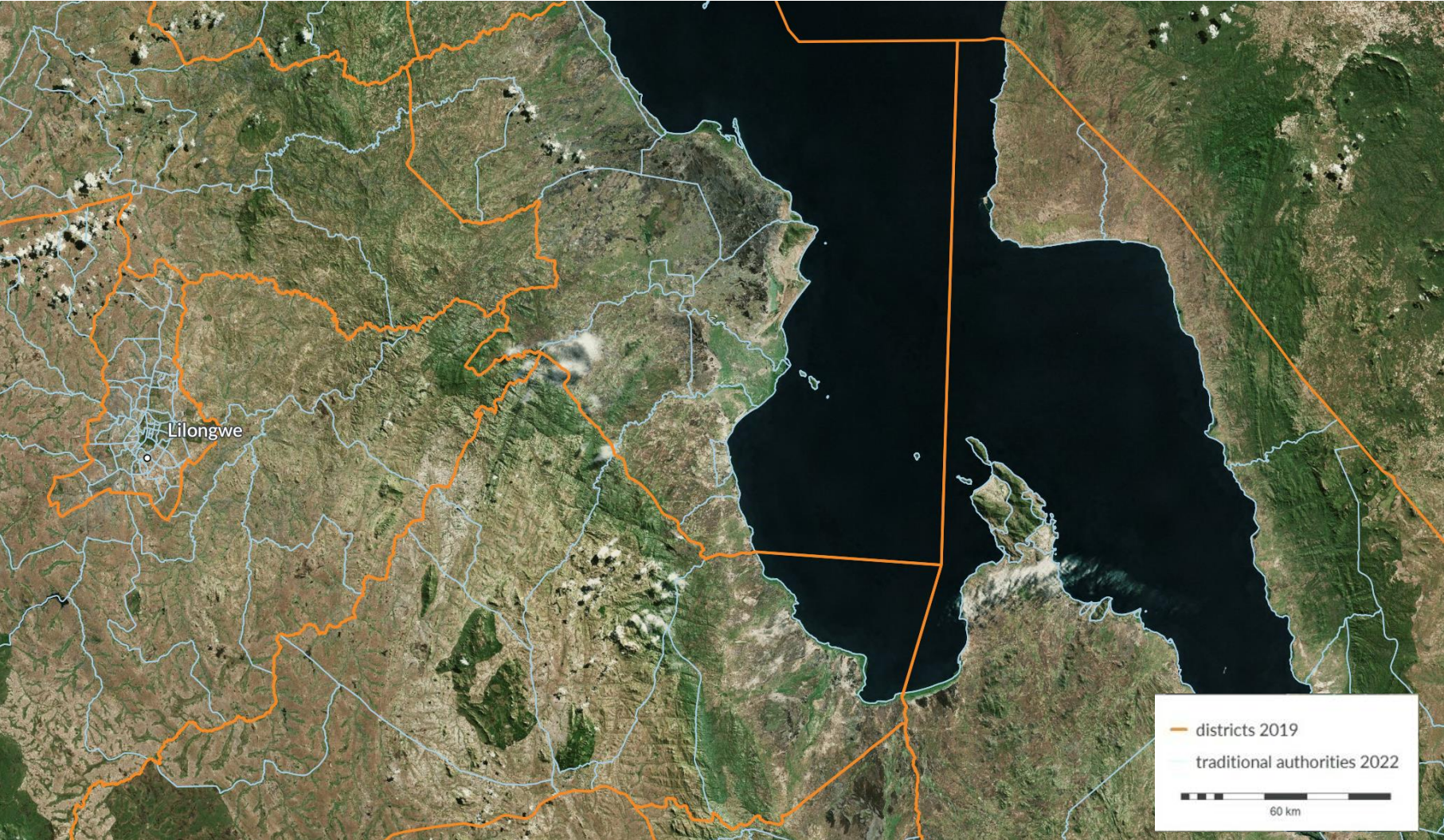
A solid blue trapezoidal shape on the left side of the slide, with a vertical left edge, a shorter top edge, a longer bottom edge, and a slanted right edge.

Examples for single countries

Malawi Traditional Authorities 2022

Districts 2019 vs. traditional authorities 2022

[GO TO MAP SAMPLES](#)



Kenya wards 2022

Counties 2019 vs. 2022

[GO TO MAP SAMPLES](#)



A large, solid blue trapezoidal shape on the left side of the slide, with its top edge horizontal and its right edge slanted inward towards the bottom.

Why GfK?

What makes GfK maps special?



Global coverage

World's largest collection of digital postal and administrative maps



Highly detailed and precise

Seamless rendering of boundaries and coastlines



Infinitely zoomable

Vector-based for infinite zoom capability



Up to date

Regularly updated to ensure the high accuracy and completeness of our maps

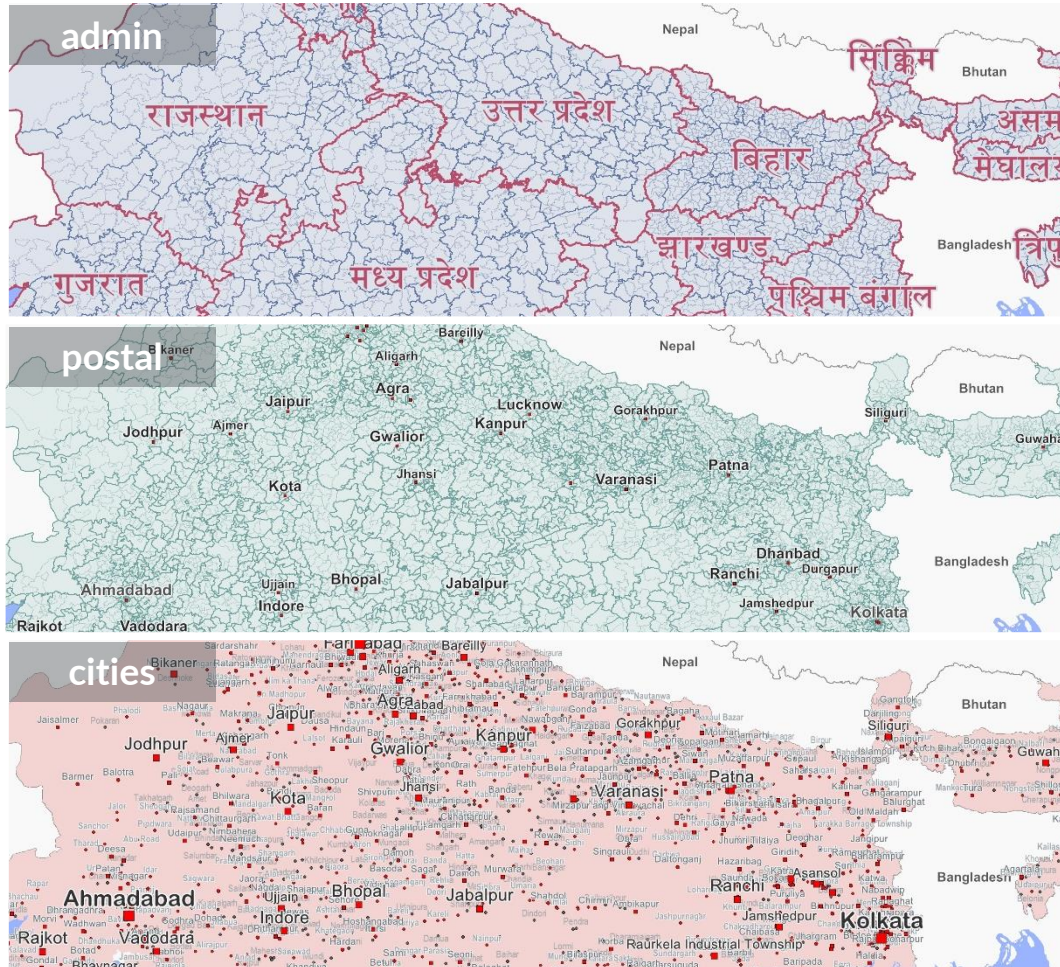


Seamless and comprehensive

Perfectly fitting with our market data for seamless and reliable planning

What you receive

Ready-to-use digital maps for all industries and BI applications



Available standard formats:

- GfK RegioGraph Lay (*.lay)
- ESRI Shapefile (*.shp)
- ESRI File Geodatabase (*.gdb)
- MapInfo TAB Extended (*.tab)
- MapInfo Interchange Format (*.mif)

Further formats, such as:

- GeoJSON (*.geojson)
- TopoJSON (*.topojson)
- GeoPackage (*.gpkg)
- PostGIS Dump
- FlatGeobuf (*.fgb)

Standardized table structure:

- ID, reference number or ZIP code
- Name in local language
- Name in ASCII characters

Questions?

Contact us at any time.



YOUR GEOMARKETING TEAM

www.gfk.com/geomarketing

+49 911 395 2222

geomarketing@gfk.com

More about our solutions:

PRODUCT CATALOG

WEBSHOP