



iPhone SE (2nd generation)

Apple Recycler Guide

June 2023

Contents

3	About This Guide
4	Identification
5	Directive 2012/19/EU Annex VII Components
6	Safety Considerations
8	Recommended Tools
9	Disassembly Instructions
22	Material Categorization of Output Fractions

About This Guide

Apple Recycler Guides provide guidance for electronics recyclers on how to disassemble products to maximize recovery of resources. The guides provide step-by-step disassembly instructions and information on the material composition to help recyclers direct fractions to the appropriate material recycler.

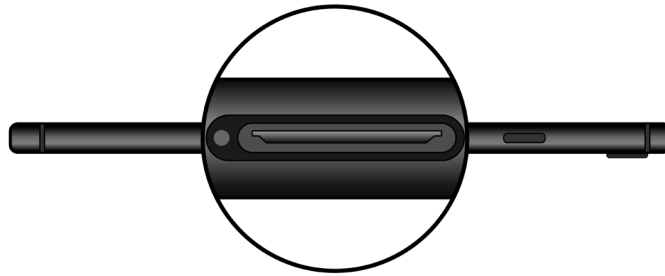
To conserve important resources, we work to reduce the materials we use and aim to one day source only recycled or renewable materials in our products. A key path to reaching that goal is resource recovery from end-of-life electronics.

Disassembly procedures are intended to be performed only by trained electronics recycling professionals. The recycler is responsible for independently evaluating and ensuring compliance with all applicable environmental, health, and safety laws related to the work. These include but are not limited to laws relating to the management, handling, shipping, and disposal of the outputs of this work as waste and laws in place to ensure the health and safety of all employees who support this work.

For questions or feedback about this guide, email contactesci@apple.com.

Identification

You can find the model number of the iPhone SE inside the SIM tray slot.



Model numbers:
A2275, A2296, A2298

Directive 2012/19/EU Annex VII Components

Directive 2012/19/EU Annex VII requirements apply to the following substances and components.

Substance/Component	Apple Part Name	Removal Instructions
Printed circuit board if the surface is greater than 10 square centimeters	Main logic board	Follow steps 1–10
External electric cables	Power adapter, charge cable	Follow step 1
Battery	Lithium-ion polymer battery	Follow steps 1–6
Cover glass and liquid crystal display (LCD) cell if the surface is greater than 100 square centimeters	LCD cell	Follow steps 1–5
No further substances or components as listed in Annex VII		

Safety Considerations

The recycler is responsible for independently evaluating all activities undertaken by its employees to perform or support the work and ensuring compliance with all applicable health and safety laws related to the work. These include but are not limited to laws relating to the health and safety of all employees who perform or support this work. The recycler is also responsible for evaluating the workspace and ensuring that the area in which the work is to be undertaken is designed using ergonomic best practices and meets all ergonomic requirements to ensure the protection of its employees.

Personal Protective Equipment

Personal protective equipment should be worn during the entire recycling process.



Wear hand protection



Wear eye protection



Wear protective clothing



Wear foot protection

Battery Safety

This product uses a lithium-ion polymer battery. Before beginning any disassembly work, ensure that a safe working procedure for handling lithium-ion batteries has been established, which could include discharging the batteries so that they can be more safely managed. The following considerations may also be included:

- Remove anything from your person that could conduct energy, such as jewelry and watches, to avoid electric shock to yourself or the logic board.
- To avoid the potential for thermal runaway and the release of potentially noxious fumes, don't puncture, strike, or crush lithium-ion polymer batteries or devices powered by them.
- Don't throw, drop, or bend the battery.
- Don't expose the battery to excessive heat or sunlight.
- Don't use tools that are sharp or conduct electricity.
- Keep your workspace clear of foreign objects and sharp materials.
- Dispose of batteries according to local environmental laws and guidelines.

Workspace safety guidelines

- Use heat-resistant gloves and safety glasses.
- Keep a sand dispenser within arm's reach (2 feet or 0.6 m) on one side of the workstation, not above the workstation. The dispenser should be a wide-mouthed, quick-pour metal container with a flip-top lid or tray that contains 8–10 cups (1.9–2.4 L) of clean, dry, untreated sand.
- Keep the battery at least 2 feet (0.6 m) from paper and other combustible materials.
- Work in an area with adequate ventilation.

Handling a thermal runaway

If you notice any of the following signs, a thermal runaway is likely underway, and you should act immediately:

- The lithium-ion polymer battery or a device containing one begins to smoke or emit sparks or soot.
- The battery pouch suddenly and quickly puffs out.
- You hear hissing or popping sounds.

Don't use water or an ABC/CO₂ fire extinguisher on a thermal runaway battery or a device containing one. Water and ABC/CO₂ fire extinguishers will not stop the reaction.

Do smother the battery or device immediately with plenty of clean, dry sand, dumped all at once. Timing is critical; the faster you pour all the sand, the faster the thermal runaway will stop.

Do leave the room for 30 minutes if the thermal runaway causes any irritation.

Do wait 30 minutes before touching the battery. Wear heat-resistant gloves and safety glasses to remove the battery from the sand, or use a touchless thermometer to measure the battery temperature. Only touch the battery when the event has finished.

Do dispose of the damaged battery or device (including any debris removed from the sand) according to local environmental laws and guidelines.

Hazard Warnings



Broken glass hazard



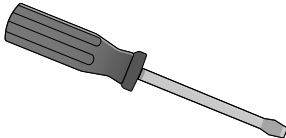
Rechargeable battery hazard



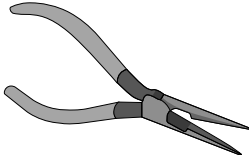
Chemical exposure hazard

Recommended Tools

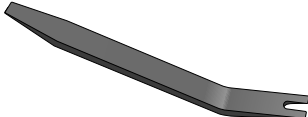
Flat-blade screwdriver



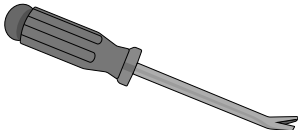
Long-nose pliers



Miniature plastic pry bar



Nail-pulling screwdriver



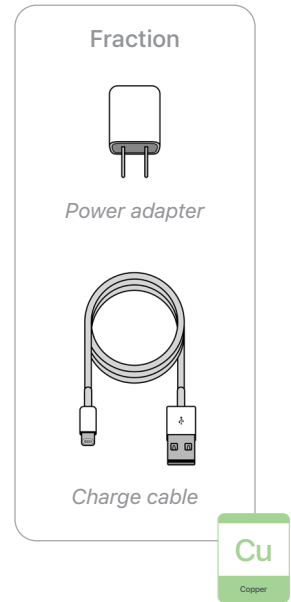
Tweezers



Disassembly Instructions

1. Remove the power adapter and the charge cable.

- » *Ensure that the iPhone is turned off.*
- » *Unplug the power adapter. Disconnect both ends of the charge cable.*



2. Remove the display.



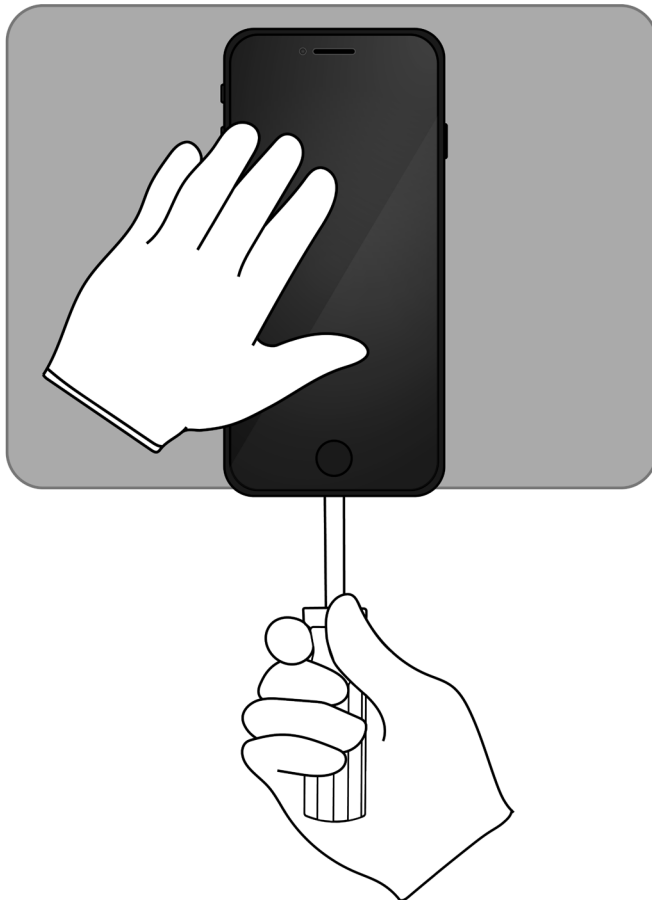
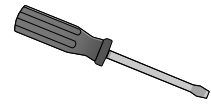
Broken glass hazard



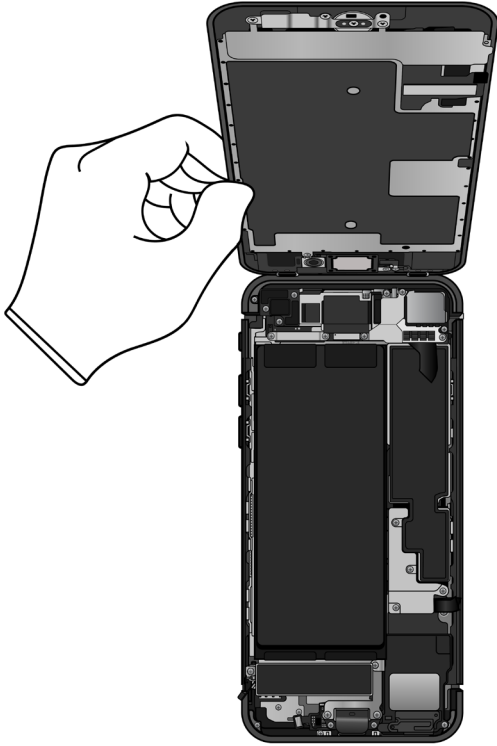
Chemical exposure hazard

- » *Hold the iPhone at the edge of a counter with the display faceup and the Lightning connector toward the counter edge.*
- » *Insert the tool tip into the Lightning connector. Push the handle down to pry the display from the enclosure.*

Tools Used

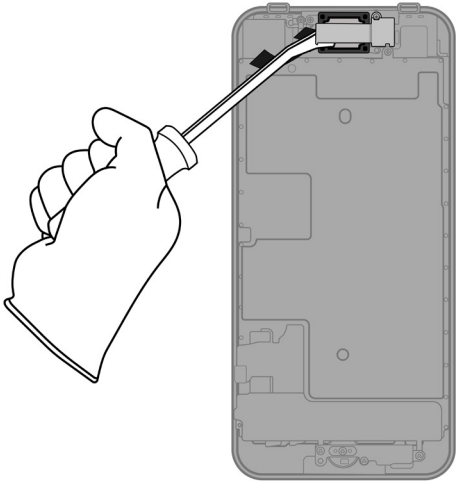


» Remove the display by hand. Set the enclosure aside.

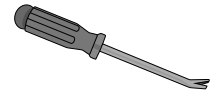


3. Remove the receiver and the front camera.

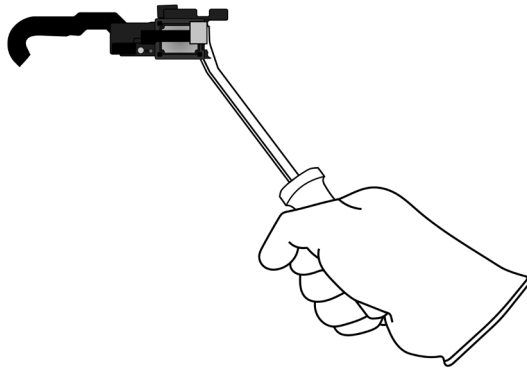
» *With the display facing down, pry off the receiver and the front camera.*



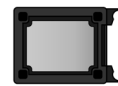
Tools Used



» *Pry the receiver off the front camera.*



Fraction



Receiver

REE

Rare Earth Elements

Fraction



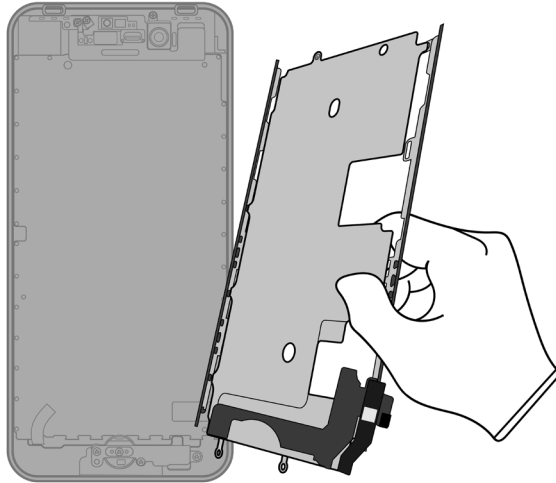
Front camera

PMs

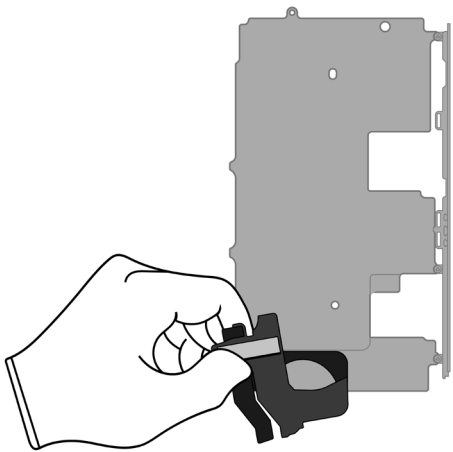
Precious Metals

4. Remove the display shield.

» *Lift off the display shield.*



» *Pull the ribbon cable off the display shield.*



Fraction

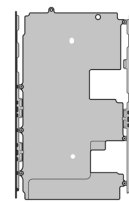


Ribbon cable

Cu

Copper

Fraction

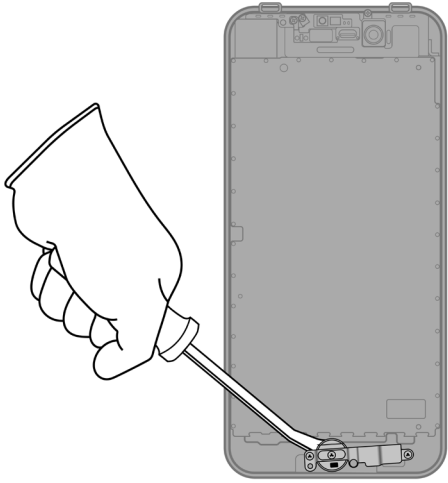


Display shield

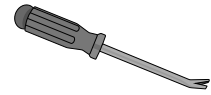
Fe

Ferrous

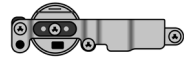
5. Pry the Home button/Touch ID sensor off the bottom of the LCD cell.



Tools Used



Fraction

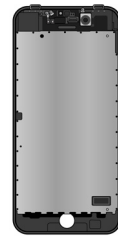


Home button/
Touch ID sensor

Cu

Copper

Fraction



LCD cell

GL

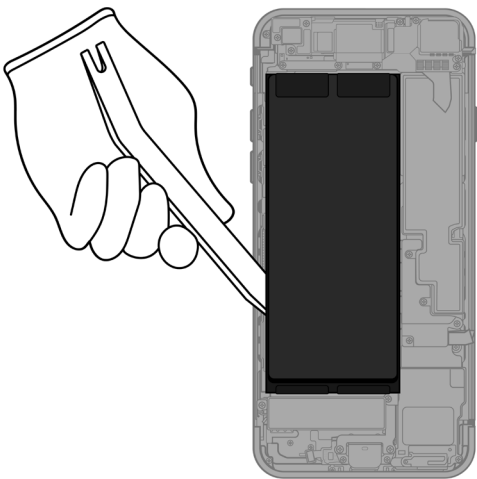
Glass

6. Inside the enclosure, carefully remove the lithium-ion polymer battery.



Rechargeable battery hazard

- » *Using tweezers, gently peel one of the battery adhesive tabs away from the battery.*
- » *Twist the tab around the tweezers until white adhesive appears. Continue twisting until the entire adhesive strip is removed.*
- » *Repeat this process for the remaining battery tabs. Continue with the miniature plastic pry bar if needed.*



Tools Used



Fraction

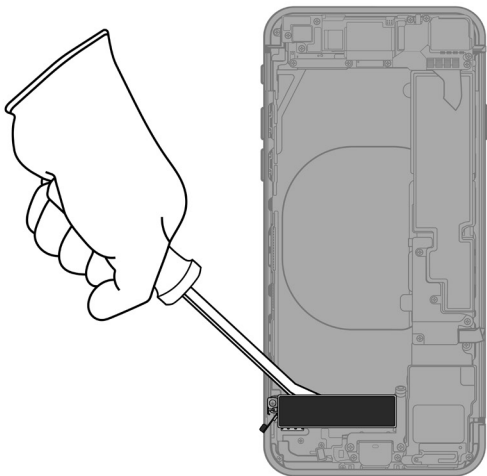


Lithium-ion
polymer battery

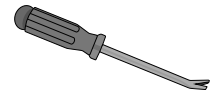
BT

Battery

7. Pry off the Taptic Engine.



Tools Used



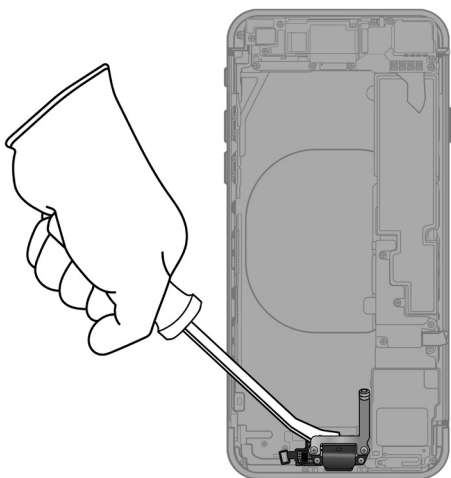
Fraction



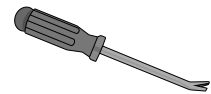
Taptic Engine

REE
Rare Earth
Elements

8. Pry off the microphone and Lightning connector assembly.



Tools Used



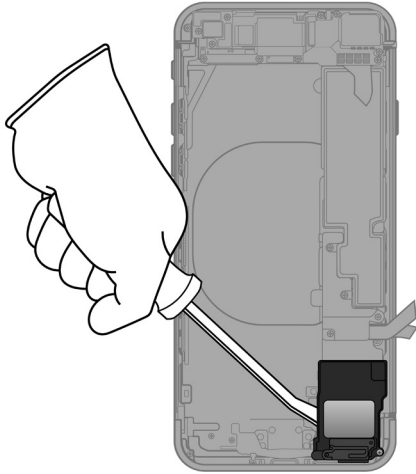
Fraction



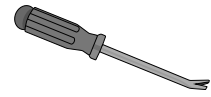
Microphone and
Lightning connector
assembly

Cu
Copper

9. Pry off the speaker.



Tools Used



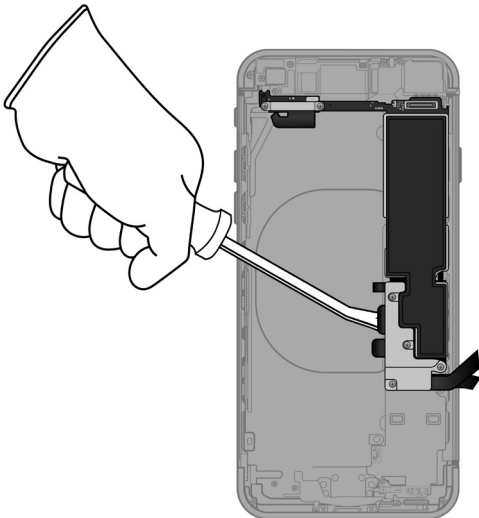
Fraction



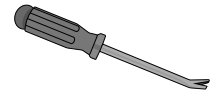
Speaker

REE
Rare Earth
Elements

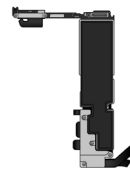
10. Pry off the main logic board.



Tools Used



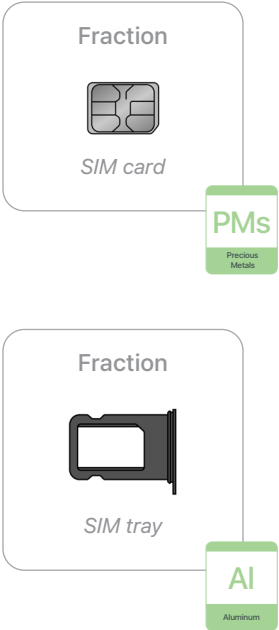
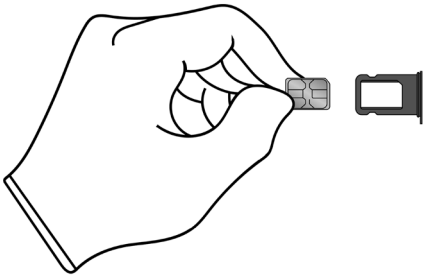
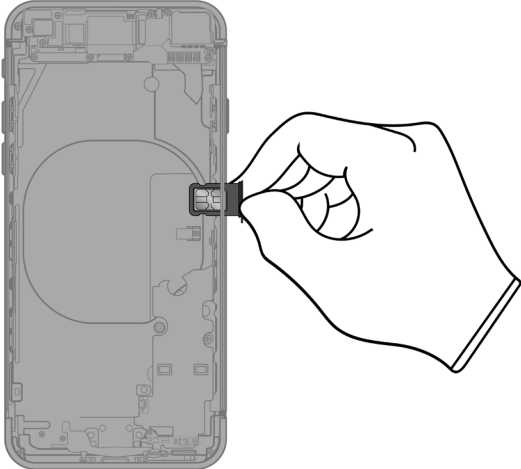
Fraction



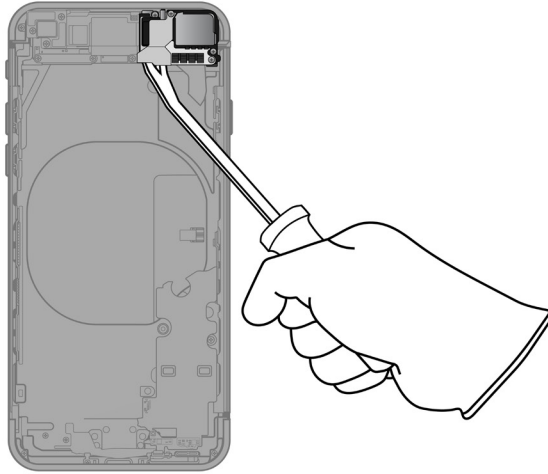
Main logic board

PMs
Precious
Metals

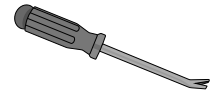
11. Remove the SIM card and SIM tray. Separate the SIM card from the SIM tray.



12. Pry off the rear camera.



Tools Used



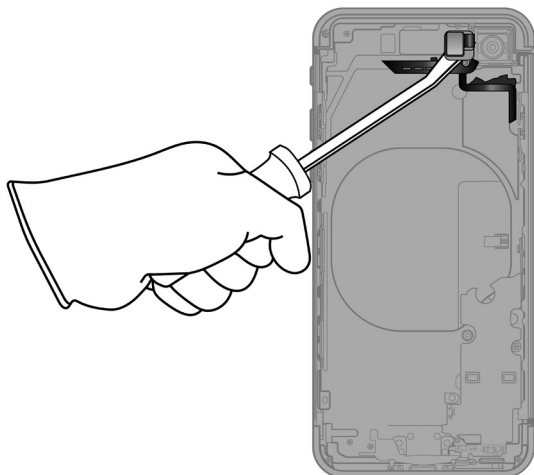
Fraction



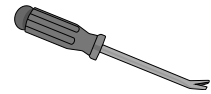
Rear camera

PMs
Precious Metals

13. Pry off the strobe.



Tools Used



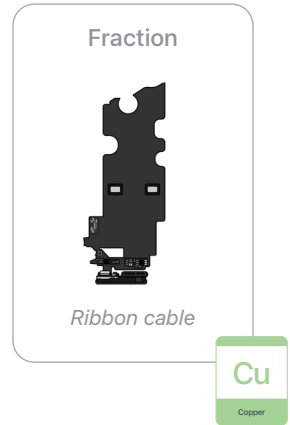
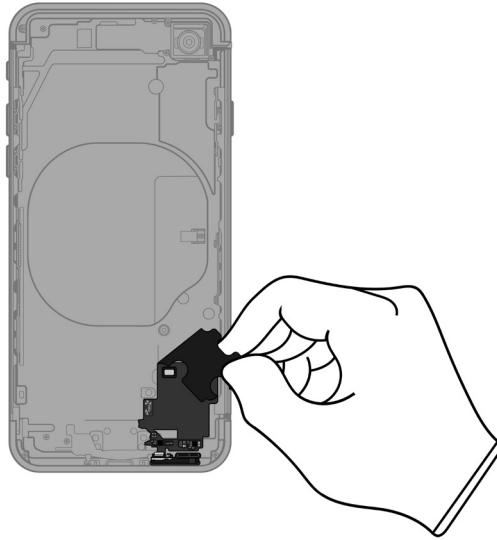
Fraction



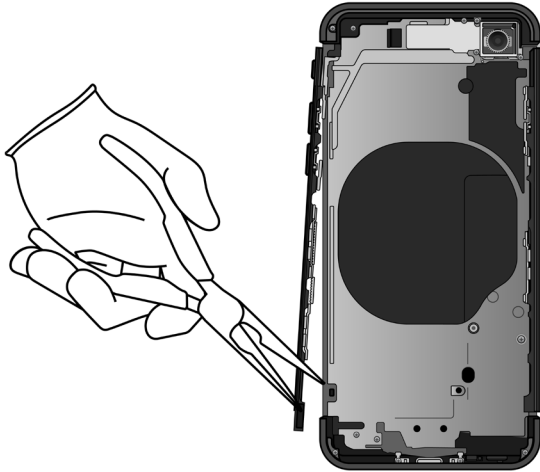
Strobe

Cu
Copper

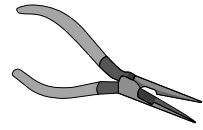
14. Pull off the ribbon cable.



15. Pull the enclosure band off the support plate.



Tools Used



Fraction



Enclosure band

Al

Aluminum

Fraction








Support plate

Cu

Copper

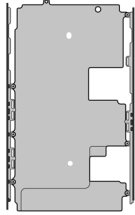
Material Categorization of Output Fractions

All outputs from this process must be managed, handled, and disposed of in accordance with applicable waste laws and regulations, including but not limited to the Waste Framework Directive and its national enactments in Europe.

Fraction	Downstream Processing
<p data-bbox="435 594 566 621">Aluminum</p>  <p data-bbox="461 772 539 795"><i>SIM tray</i></p>  <p data-bbox="425 1079 574 1102"><i>Enclosure band</i></p>	<p data-bbox="964 594 1273 621">Primary Target Material</p> 
<p data-bbox="440 1203 558 1230">Batteries</p>  <p data-bbox="367 1520 631 1543"><i>Lithium-ion polymer battery</i></p>	<p data-bbox="964 1203 1273 1230">Primary Target Material</p> 

Fraction **Downstream Processing**

Ferrous

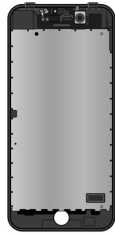


Display shield

Primary Target Material



Glass



LCD cell

Primary Target Material



Potential Additional Materials



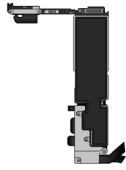
Fraction

Downstream Processing

Logic Boards



Front camera



Main logic board



SIM card



Rear camera

Primary Target Material



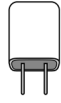
Potential Additional Materials



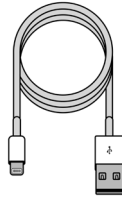
Fraction

Downstream Processing

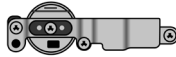
Mixed Electronics



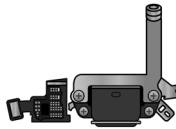
Power adapter



Charge cable



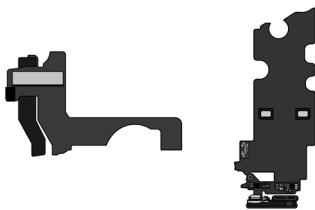
Home button/
Touch ID sensor



Microphone and
Lightning connector assembly



Strobe



Ribbon cables

Primary Target Material



Potential Additional Materials



Fraction

Downstream Processing

Mixed Electronics (cont.)



Support plate

Rare Earth Magnets



Receiver



Taptic Engine



Speaker

Primary Target Material



Potential Additional Materials

