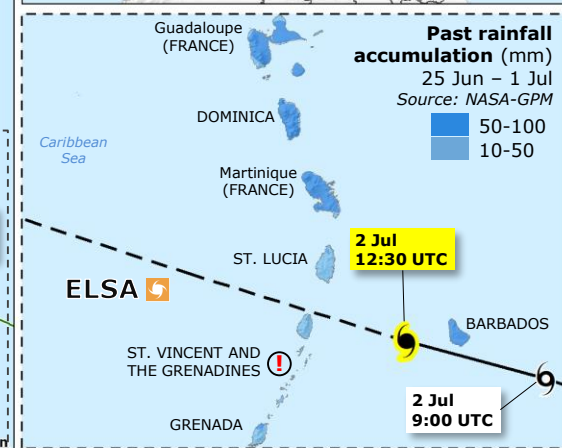
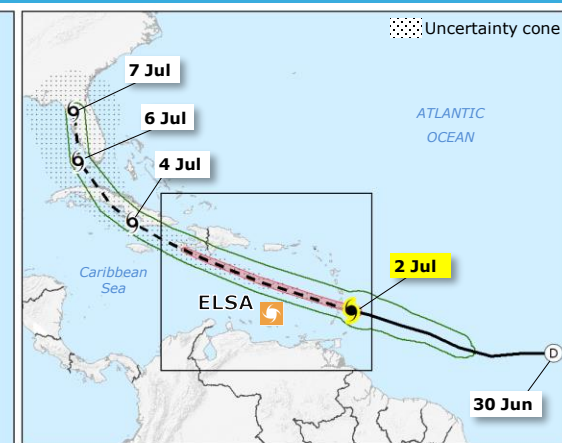
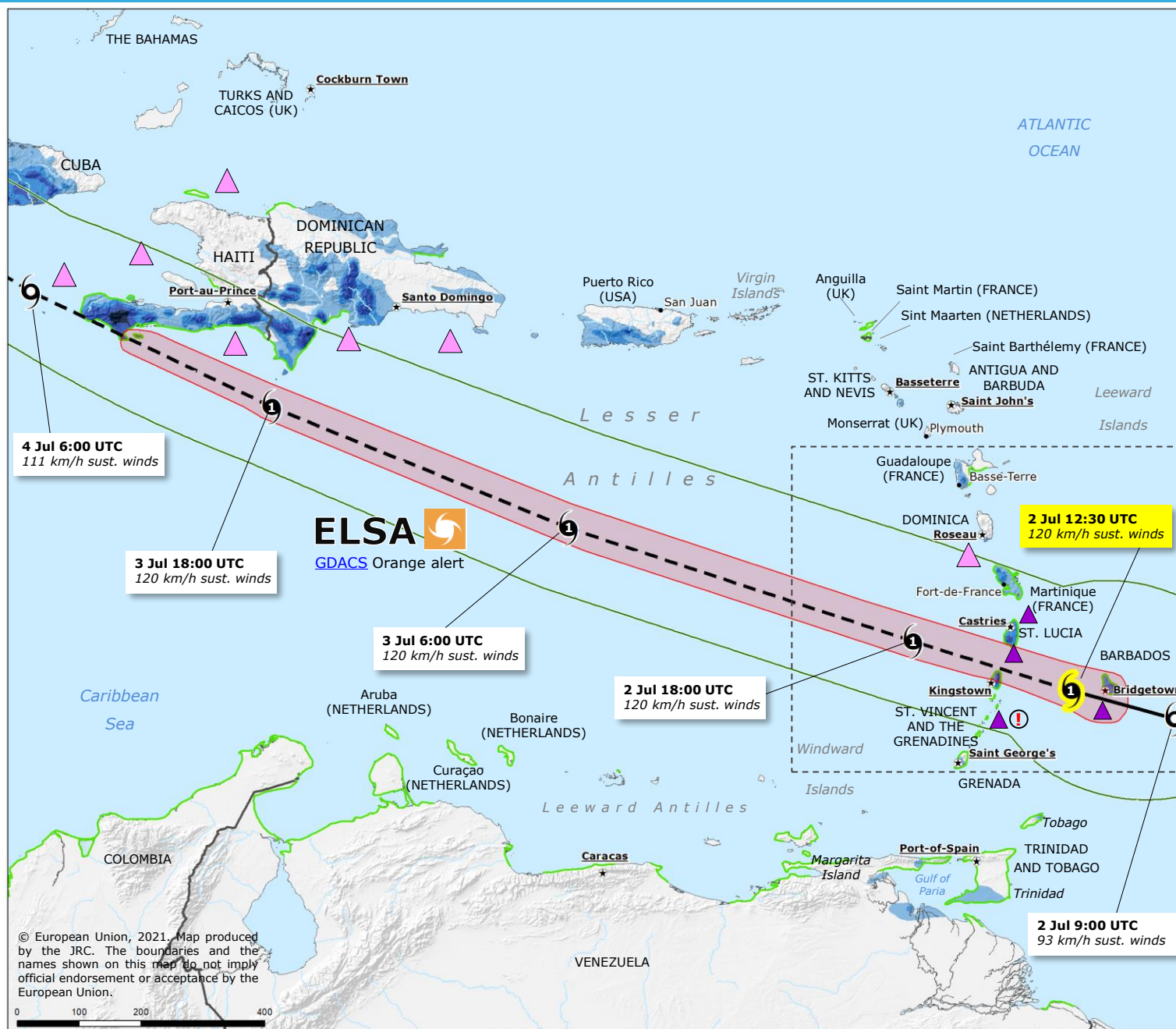


The Caribbean | Hurricane ELSA



Tropical Cyclone (TC)
Source: GDACS, NOAA

- Current position
- Forecast track
- Past track

Intensity

- 6 ≥ 119 km/h Hurricane
- 5 63-118 km/h Tropical storm
- 4 < 63 km/h Tropical depression

Wind buffer
2-4 Jul
Source: GDACS, JRC

- Red box ≥ 119 km/h
- Green box 63-118 km/h

Rainfall forecast (mm)
2-6 Jul
Source: NOAA-HWRF

- Dark blue box 300-600
- Medium blue box 100-300
- Light blue box 50-100
- Very light blue box 10-50

Storm surge
2-4 Jul
Source: JRC, atm. NOAA-HWRF

- Green line < 1 m

Community advisory
Source: NOAA

- ▲ Hurricane warning
- ▲ Tropical storm warning

ⓘ Suspension of national activities
Source: NEMO

© European Union, 2021. Map produced by the JRC. The boundaries and the names shown on this map do not imply official endorsement or acceptance by the European Union.