

A photograph of two women sitting in a room with green walls. The woman on the left has blonde hair and is wearing a white, vertically striped, long-sleeved blouse. The woman on the right has white hair and is wearing a colorful floral patterned blouse. They are both smiling. The room is decorated with floral lamps, a framed abstract painting, and a vase of flowers. The text 'Sanderson x SALVESEN GRAHAM' is overlaid in the upper right corner.

Sanderson
x
SALVESEN GRAHAM

DIGITAL DESIGN BOOK



Sanderson

x

SALVESEN GRAHAM

CELEBRATING BRITISH CRAFTSMANSHIP AND HARKING BACK TO THE EXQUISITE PAST OF ENGLISH DESIGN AND DECORATION.

Embracing a legacy for iconic florals and quintessentially English design sensibilities, Sanderson has collaborated with Salvesen Graham, the inimitable design duo, to design a brand-new collection of trimmings and curate an edit of some of our most iconic designs in fabric and wallpaper.

This new trim collection marks a principal creative moment in Sanderson's new chapter. Designed with Salvesen Graham co-founders, Mary Graham and Nicole Salvesen, these trimmings are bold and new but retain a classicism that make them timeless. A thoughtful and considered approach was taken when selecting the fibres used to create each trim that will stand the test of time, harking back to the classical applications of beautiful trimmings, but seeking to elevate modern interiors through the beauty of decorative adornments, made exclusively in the UK.

With over 10 years passed since our last trim designs, this collaboration marks a triumphant return for trimmings to the Sanderson aesthetic. From classic fringes to fan braids, Mary and Nicole have lent their creativity to creating seven exquisite designs. These detailed creations take interiors to the next level; loops, striés and braids create a sense of nostalgia in their designs, while elevating upholstery, homewares and even wallcoverings.

Bespoke made, the trimmings use natural fibres including wool, linen and cotton mixes, as well as some pure wool, to create trims that can be designed with in exciting and diverse ways. All trims are produced in the UK, an intentional commitment to sourcing locally, and a step forward in lowering our carbon footprint and aligning with our Live Beautiful ethos.

A beautiful addition to the English home design aesthetic, these exquisitely crafted trimmings are imbued with English beauty, timeless in their appeal while still looking resolutely forward with a bold sense of character for the new era for Sanderson.

Sitting alongside this stunning new collection of bespoke trims, Mary Graham and Nicole Salvesen have explored the Sanderson archives to reveal a thoughtfully curated edit of designs that sits at the intersection of curiosity and comfort, where classic stripes meet boldly iconic florals in a power play of design. Cherry-picking from an array of fabric and wallpaper from past and present collections, including paint colours, we reveal an inspired edit that retains a quintessentially British edge.

ALL TRIMS MADE EXCLUSIVELY IN THE UK
ALL WALLPAPERS AND FABRICS PRINTED IN THE UK



The QUINTESSENTIAL COUNTRY HOME

Mary Graham's own home has become the setting of a design reinvention. Specially selected fabrics, wallcoverings, and paints, from Sanderson classics to new collections, serve to highlight the sumptuous trimmings, which adorn and embellish upholstery, drapes and walls, taking the old and blending in the new to create design delectation with some of the most splendid of Sanderson patterns and colours.



STAPLETON PARK | 224424



NOSTERFIELD | 237366



DALLIMORE | 217234



OYSTER WHITE

NUNWICK

A three-tiered loop fringe, the Nunwick was developed especially for Sanderson and Salvesen Graham owing to our desire for something that truly encapsulates the luxury of English country interiors. It has a classic swags and tails style, mimicking that of drapery in a stately home, and uses three tones in each colourway to achieve this highly layered effect. The variation of tones present is unique to each colourway.



PARCHMENT | 237358



THYME | 237359



MUSTARD | 237360



ROSE | 237361



BLUE CLAY | 237362





NOSTERFIELD

The tassel, a classic amongst trimmings, is redefined in Nosterfield. This complex yarn starts at the top of the braid with a stitched detail giving it structure and firmness.

Flowing down, a wool swag is thick with texture and feeds into the main tassels, which are robust and yet soft, holding their shape like pirouetting dancers in a row.

The multi-tonal threads create depth, and the use of wool is intentional to create a very English feel to this trim.

Sanderson and Salvesen Graham remain dedicated to seeking out tradition and letting it flourish in these designs. Nosterfield is a beautiful traditional design with a modern thought process on the craft, making this a tassel that will stand the test of time.



BLUE CLAY | 237363



PARCHMENT | 237364



MUSTARD | 237365



ROSE | 237366



AUTUMN | 237367

TANFIELD

A corded pipe, this design is unique due to the way it has been made. A wrapped yarn gives the impression of a cord but with a different texture and pliability. Overall, there is a luxurious smoothness to the cord, set against the flat edge of the trim. A simple yet classic trimming that sits beautifully on upholstered pieces or around window frames and architraves for a high-end finish.



BLUE CLAY | 237347



PARCHMENT | 237348



HAZEL | 237349



ROSE | 237351



CRANBERRY | 237352



INDIGO | 237353



THYME | 237350



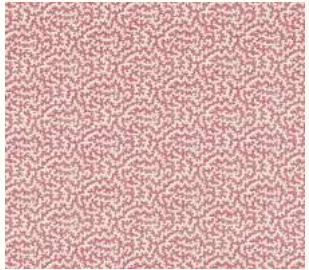


A GROUNDED, SEASONAL PALETTE

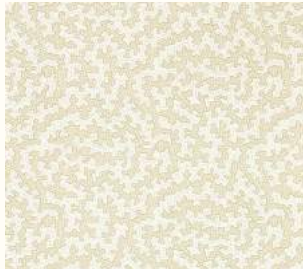
This exclusive collection of trims comes in 10 rich and grounded shades. Parchment, Hazel, Rose, Cranberry, Mustard, Rowanberry, Thyme, Autumn, Blue Clay, and Indigo, celebrate light and dark found in earthy nature in this capsule colour collection, working beautifully with Salvesen Graham's own studio palette. The names for each of the designs were chosen from towns and villages surrounding Mary Graham's own North Yorkshire home, a nod to quintessentially English living.



ROSAMUND | 224451



TRUFFLE | 227081



TRUFFLE | 217243



BOTANICAL GREEN

THORNBOROUGH

A bobble braid, Thornborough has been created with a simple stitch gathering the thread, laid over a walling braid, similar in style to Kirklington. The bobble itself is a bold accent and creates a playfulness in this design, while still honouring the tradition of this trim. The bobble section itself is a wool thread and the trim's backing shows off a picot edging.



THYME | 237354



MUSTARD | 237355



ROWANBERRY | 237356



ROSE | 237357





KIRKLINGTON

A standard flat walling braid, there is nothing standard about the exquisitely smart Kirklington design. The strié braid creates a robustness and texture when applying as a simple tape trim, blending beautifully against wallpaper around architrave to create an elevated finish.



INDIGO | 237342



THYME | 237343



ROSE | 237344



PARCHMENT | 237346



HAZEL | 237345



ADORNED, DECORATED *and* EMBELLISHED

With a quintessentially British edge, a flair for florals and Salvesen Graham's love of the Georgian England aesthetic, colour, texture and character combine in this exquisite collections of trims and exceptional edit of fabrics, wallpapers and paint, to reveal inspired new looks for home interiors. This is Sanderson revisited.



ROSE & PEONY | 224421



RUE LINEN | 237063



RUE LINEN | 237046



OXNEY OLIVE

MELMERBY

A wide width tape with a fan edge detail, likened to a scallop edge, makes Melmerby completely distinguishable. A wonderful addition to this edit, the stitch detailing features in two tones adding texture and difference in this wool thread. The overall finish is very organic, matt in appearance and imitates that of a tailored suit. It is strong, structured, and sharp in its appearance.



BLUE CLAY | 237374



ROWANBERRY | 237375



CRANBERRY | 237376



PARCHMENT | 237377





NORTON

A decidedly chunky wool cut ruche with a detailed loop braided head, Norton is intentionally dense for that classic English interior. It is bold and has substance, crafted from 100% wool. The head of this fringe trim has been made deeper to be more decorative in its applications. When trimming the edge of upholstery, the detail is not lost in a deep border.



THYME | 237370



PARCHMENT | 237368



HAZEL | 237369



ROWANBERRY | 237371



MUSTARD | 237372



CRANBERRY | 237373

FABRIC INDEX



ROSE & PEONY | 224421



ROSAMUND | 224451



LITTLE CHELSEA | PR7607/14



CHELSEA | 224916



STAPLETON PARK | 224424



AMANPURI | DCOUAM203/C



DALLIMORE | 227098



ANAAR | 226628



ROBIN'S WOOD | 227057



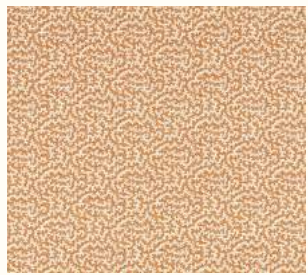
ROBINS WOOD | 227056



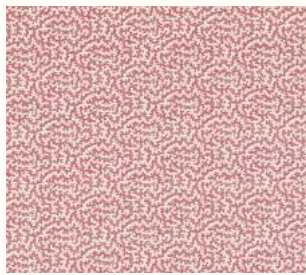
SESSILE LEAF | 227075



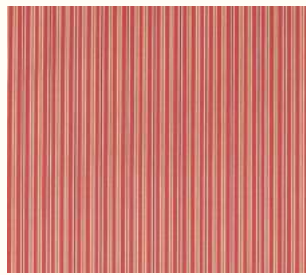
PINETUM STRIPE | 227088



TRUFFLE | 227082



TRUFFLE | 227081



MELFORD STRIPE | 237209



MELFORD STRIPE | 237210



FENTON CHECK | 236742



LANGTRY | 233262



FABRIC INDEX



DARTER | 236899



MELFORD | 237081



MELFORD | 237092



DORTON VELVET | 237035



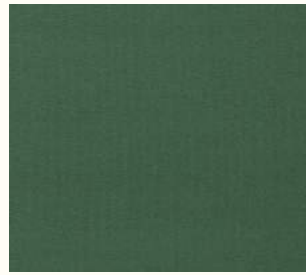
HECTOR | 236755



RUE LINEN | 237054



DORTON VELVET | 236996



DORTON VELVET | 237001



DORTON VELVET | 237021



DORTON VELVET | 237037



RUE LINEN | 237066



RUE LINEN | 237046



DORTON VELVET | 237014



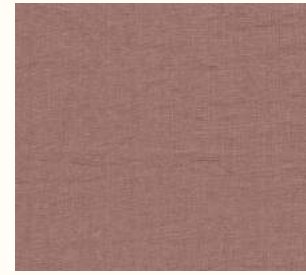
TUSCANY | 234226



TUSCANY II | 237147



TUSCANY II | 237142



RUE LINEN | 237069



RUE LINEN | 237044



TUSCANY II | 237153



TUSCANY II | 237155



TUSCANY II | 237143



TUSCANY II | 237141



RUE LINEN | 237068



RUE LINEN | 237055



TUSCANY II | 237156



TUSCANY II | 237159



PORTLAND | 233234



PORTLAND | 233238



RUE LINEN | 237063



RUE LINEN | 237064



RUE LINEN | 237043



RUE LINEN | 237061



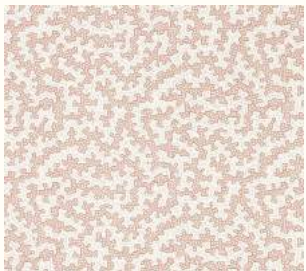
WALLPAPER INDEX



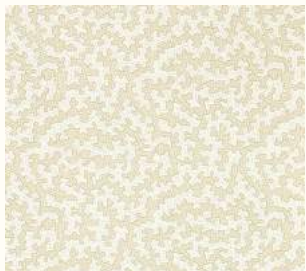
DALLIMORE | 217234



ROSE & PEONY | 217028



TRUFFLE | 217240



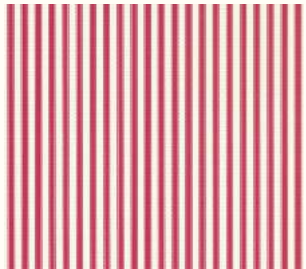
TRUFFLE | 217243



SESSILE PLAIN | 217247



OSNEY | 216894



PINETUM STRIPE | 217253

PAINT INDEX



OXNEY OLIVE



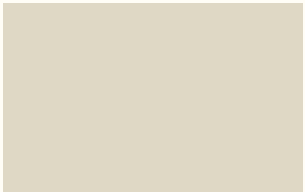
CANOPY GREEN



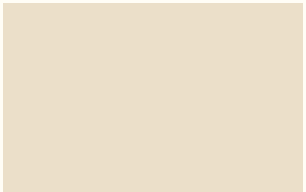
DEVON GREEN



BOTANICAL GREEN



OYSTER WHITE



OYSTER WHITE LT



AMANPURI RED



GOLDEN HONEY

TRIM INDEX



NOSTERFIELD | 237364



NOSTERFIELD | 237363



TANFIELD | 237353



MELMERBY | 237375



MELMERBY | 237376



MELMERBY | 237377



NOSTERFIELD | 237365



NOSTERFIELD | 237367



MELMERBY | 237374



THORNBOROUGH | 237354



THORNBOROUGH | 237355



THORNBOROUGH | 237356



NOSTERFIELD | 237366



KIRKLINGTON | 237342



KIRKLINGTON | 237343



KIRKLINGTON | 237344



THORNBOROUGH | 237357



NUNWICK | 237361



NUNWICK | 237358



NUNWICK | 237362



KIRKLINGTON | 237346



KIRKLINGTON | 237345



TANFIELD | 237350



TANFIELD | 237351



NUNWICK | 237360



NUNWICK | 237359



NORTON | 237373



NORTON | 237368



TANFIELD | 237347



TANFIELD | 237348



TANFIELD | 237349



TANFIELD | 237352



NORTON | 237370



NORTON | 237371



NORTON | 237372



NORTON | 237369



PRESS OFFICE DETAILS

press@sandersondesigngroup.com

HEAD OFFICE

Chalfont House, Oxford Road, Denham, UB9 4DX

LONDON SHOWROOM

Design Centre Chelsea Harbour, First Floor,
South Dome, Lots Road, London, SW10 0XE
Tel: + 44 203 903 3700

showroom@sandersondesigngroup.com

NEW YORK SHOWROOM

D&D Building, 979 Third Avenue,
Suite 905, New York, NY 10022
Tel +1 212 319 7220

sales-ny@sandersondesigngroup.com

CHICAGO SHOWROOM

222 W Merchandise Mart Plaza,
Suite 6-117A, Chicago, IL 60654
Tel +1 312 929 2058

sales-chicago@sandersondesigngroup.com

NETHERLANDS SHOWROOM

ETC Licht & Interieur, Randweg 20,
4104 AC Culemborg
Tel: +31 65349 3696

international@sandersondesigngroup.com

GERMANY SHOWROOM

Kronenstrasse 4, 76133 Karlsruhe
Tel: +49 721 981 985 60

verkauf@sandersondesigngroup.com