



SANDERSON

INDOOR | OUTDOOR

DIGITAL DESIGN BOOK

SANDERSON

INDOOR | OUTDOOR

BASED ON MUCH-LOVED HERITAGE DESIGNS FROM SANDERSON'S PORTFOLIO, SANDERSON OUTDOOR IS A BEAUTIFUL CURATION OF COORDINATING PATTERNS AND PALETTES, SET TO TRANSFORM OUTDOOR SETTINGS FOR SS24.

Introducing a collection of iconic prints, Sanderson Outdoor takes cherished designs outside with a refreshing yet calming palette. Embracing nature and its incredible biodiversity, this outdoor fabric collection remains true to the very essence of Sanderson.

Through delicate recolouring and sympathetic coordinating of much-loved designs, a rejuvenated collection comes to life, from quaint countryside to calming coastal living, Sanderson Outdoor echoes our intrinsic need for connection to the natural world.

Atlantic blues and inky indigos meet punchier tones of hibiscus and botanical green, while sandstone and agave ripple through designs with tonal tranquility. Conch pinks, matcha greens and calming shades of quince and sea salt round off the individual colour palettes that flow with one another. A harmonious collection that responds to its landscape, Sanderson Outdoor amplifies its natural surroundings in rejuvenated palettes drawn from sea and sky.

The protected marine-rich Monterey Bay, California, is the setting of inspiration for a new design of the same name. The design, references a toile archive document that has been reimagined, with lobsters and octopi added in detail, reflecting the abundance of marine life in an extraordinary etched style.

Sanderson's belief that design should seamlessly extend from the sanctuary of the home to the outdoors, comes to light in this collection of durable outdoor fabrics. Designs provide moments of serenity and peace, enhancing outdoor spaces through a considered responsiveness to the environment.

Performance values meet Sanderson aesthetics for an exquisite collection, bold, refreshed and yet retaining the heritage elegance for which Sanderson is known.

THIS COLLECTION COMPRISES 12 DESIGNS.
ALL FABRICS ARE MANUFACTURED IN THE UK.

@Sanderson1860 | sanderson.sandersongroup.com



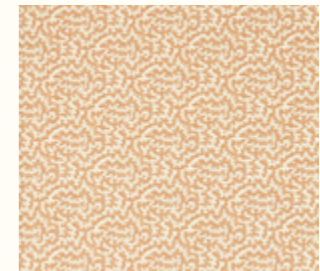


CANTELOUPE

An elegant, large-scale painterly design of oversized fruits and leaves in soft, watercolour tones adorn this easy-to-use Sanderson fabric. Glorious, stylised melons and intricate swirling leaves create a bold, refreshing statement.



CANTELOUPE | 227197



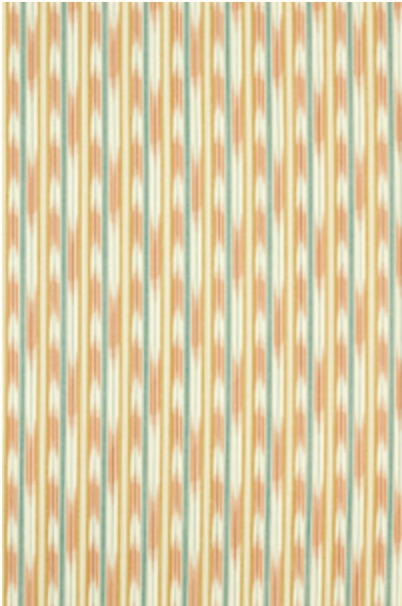
TRUFFLE | 227203



KASURI | 227201

ISHI

With a strié effect running through, this wonderfully versatile mid-scale ikat style stripe fabric can be hung both horizontally and vertically.



ISHI | 227194



CALATHEA | 227190



TRUFFLE | 227261



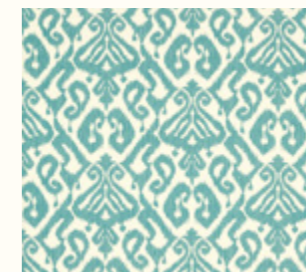


MONTEREY BAY

Monterey Bay captures the essence of one of the Pacific Coast's most breathtaking marine protected areas. Inspired by a toile archive document, the design features lobsters, an octopus, clamshells and coral intricately interlaced with varieties of kelp. The colourways accentuate the technique, reminiscent of copperplate etching.



MONTEREY BAY | 227188



KASURI | 227200



CANTELOUPE | 227196

FABRIC INDEX



CALATHEA | 227189



CALATHEA | 227190



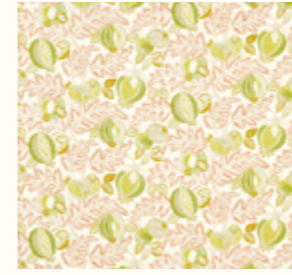
CALATHEA | 226943



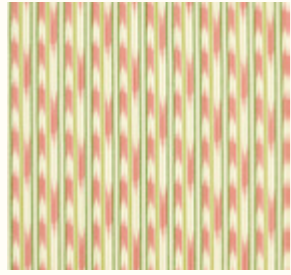
CANTALOUPE | 227196



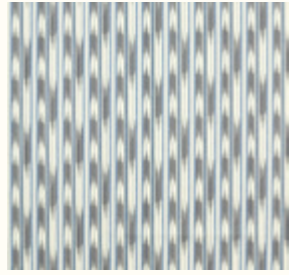
CANTALOUPE | 227197



CANTALOUPE | 227198



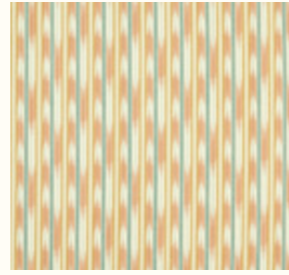
ISHI | 227191



ISHI | 227192



ISHI | 227193



ISHI | 227194



ISHI | 227195



JACKFRUIT | 226935



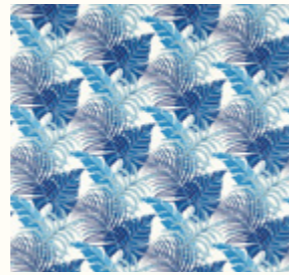
KASURI | 227199



KASURI | 227200



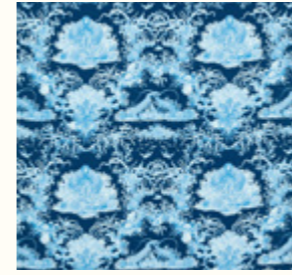
KASURI | 227201



MANILA | 226931



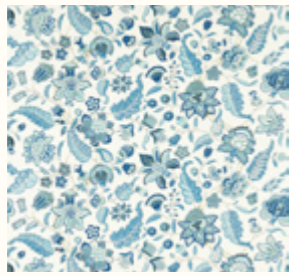
MAURITIUS | 226932



MONTEREY | 227187



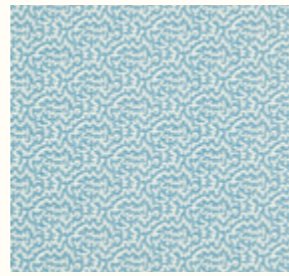
MONTEREY | 227188



NEWNHAM | 226936



ROSE & PEONY | 226929



TRUFFLE | 227202



TRUFFLE | 227203



TRUFFLE | 227204



TRUFFLE | 227261



WOODLAND CHORUS | 226937





CONTACT DETAILS

LONDON SHOWROOM

Design Centre Chelsea Harbour, First Floor,
South Dome, Lots Road, London, SW10 0XE

Tel: +44 203 903 3700

showroom@sandersondesigngroup.com

PARIS SHOWROOM

19 Rue Du Mail 75002 Paris, France

Tel: +44 (0)203 093 1840

NEW YORK SHOWROOM

D&D Building, 979 Third Avenue,
Suite 905, New York, NY 10022

Tel +1 212 319 7220

sales-ny@sandersondesigngroup.com

CHICAGO SHOWROOM

222 W Merchandise Mart Plaza,
Suite 6-117A, Chicago, IL 60654

Tel +1 312 929 2058

sales-chicago@sandersondesigngroup.com

NETHERLANDS SHOWROOM

ETC Licht & Interieur, Randweg 20,
4104 AC Culemborg

Tel: +31 65349 3696

international@sandersondesigngroup.com

GERMANY SHOWROOM

Kronenstrasse 4, 76133 Karlsruhe

Tel: +49 721 981 985 60

verkauf@sandersondesigngroup.com