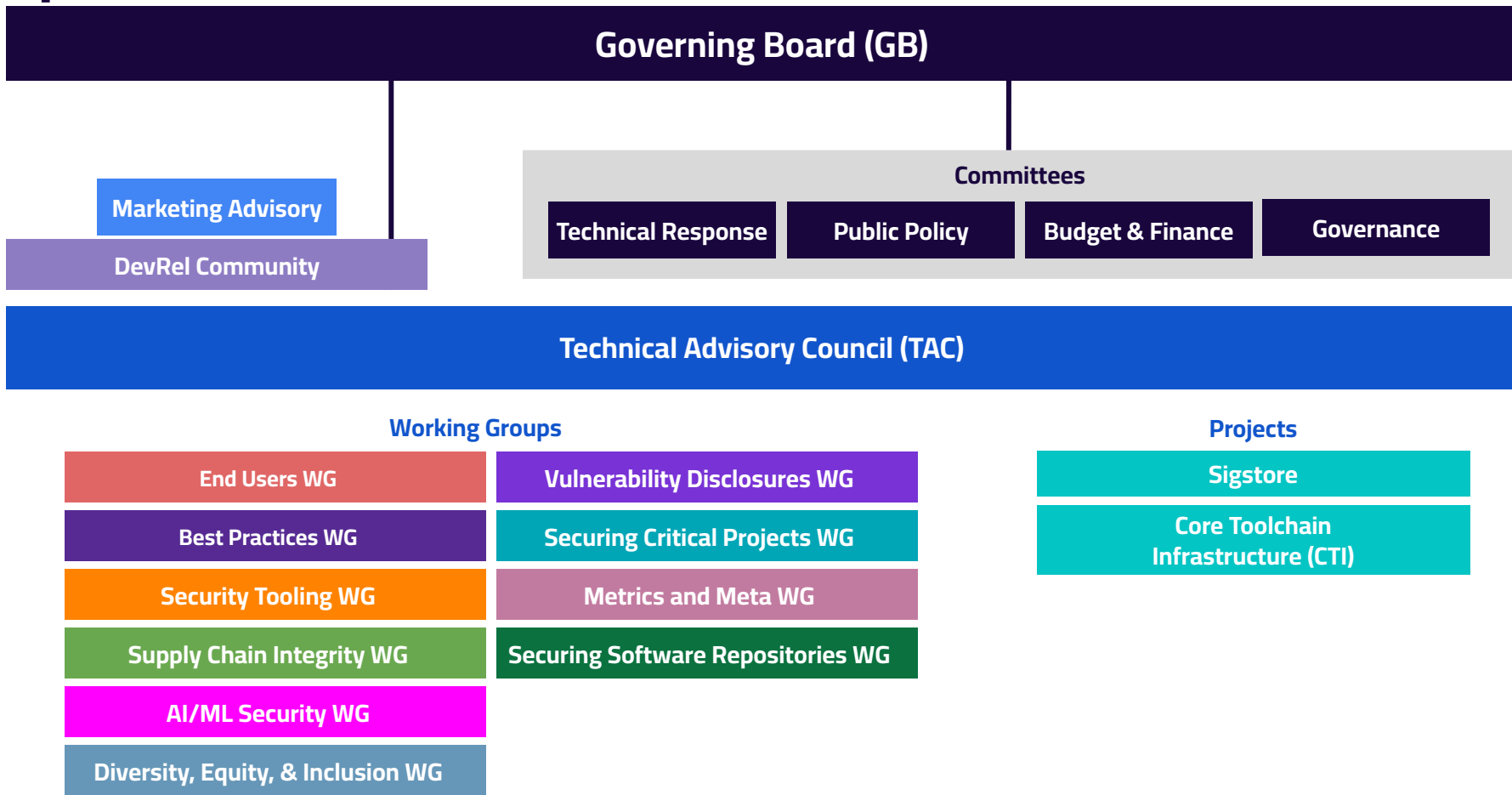


OpenSSF Structure



Working Groups, Projects, & SIGs

1. INFORM

Vulnerability Disclosures

Efficient vulnerability reporting and remediation

- I. CVD Guides SIGs
- J. OSS-SIRT SIG
- K. Open Source Vuln Schema (OSV) project
- L. OpenVEX project
- OpenVEX SIG
- M. Vuln Autofix SIG



Best Practices

Identification, awareness, and education of security best practices

- A. Secure Software Development Fundamentals courses SIG
- B. Security Knowledge Framework (SKF) project
- C. OpenSSF Best Practices Badge project
- D. OpenSSF Scorecard project
- E. Common Requirements Enumeration (CRE) project
- F. Concise & Best Practices Guides SIGs
- G. Education SIG
- H. Memory Safety SIG
- AG. The Security Toolbelt SIG



2. EQUIP

End Users

Voice of public & private sector orgs that primarily consume open source

- Z. Threat Modeling SIG

3. ENGAGE

Metrics & Metadata

Security metrics/reviews for open source projects

- N. Security Insights project
- O. Security-Metrics: Risk Dashboard project
- P. Security Reviews project
- AH. Security Insights Spec project

Security Tooling

State of the art security tools

- Q. SBOM Everywhere SIG
- R. OSS Fuzzing project
- AI. SBOMit project
- AJ. Protobom project



Supply Chain Integrity

Ensuring the provenance of open source code

- S. Supply-chain Levels for Software Artifacts (SLSA) project
- T. Secure Supply Chain Consumpt Framework (S2C2F) project
- AJ. Gittuf project
- AK. GUAC project



Securing Software Repositories

collaboration between repository operators

- AB. RSTUF Project



Securing Critical Projects

Identification of critical open source projects

- U. List of Critical OS Prj. components, & Frameworks SIG
- V. criticality_score project
- W. Census SIG
- X. Package Analysis project
- Y. allstar project



AI/ML Security

AI/ML Security at the Intersection of Artificial Intelligence and Cybersecurity

DevRel

Develop Use Cases and help others learn about security

Diversity, Equity, & Inclusion

Increase representation and strengthen the overall effectiveness of the cybersecurity workforce

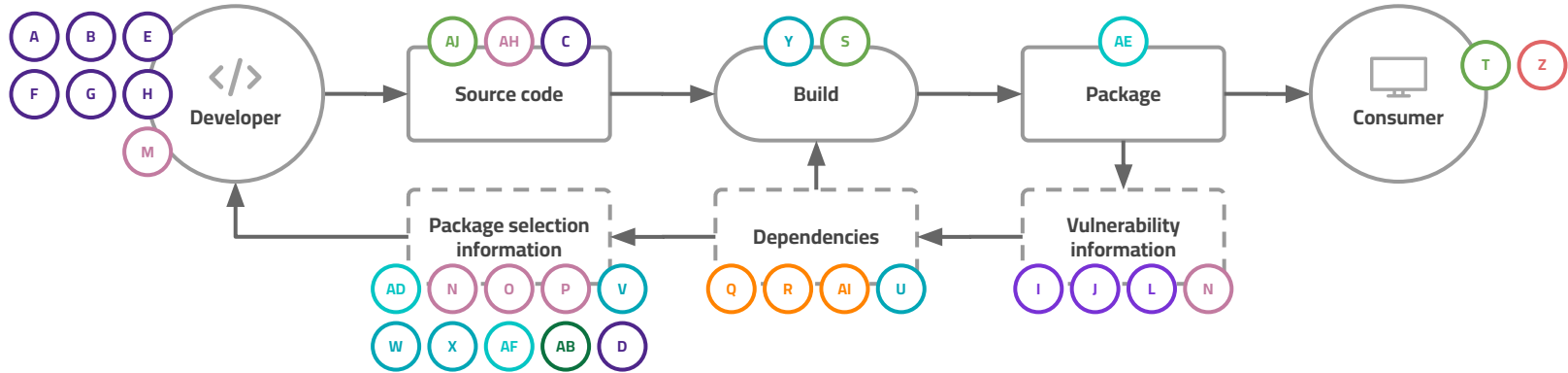
Projects

Category-leading software initiatives

- AD. Alpha-Omega
- AE. Sigstore
- AF. Core Toolchain Infrastructure (CTI)



OpenSSF Technical Initiatives Landscape



Best Practices

- A. [Secure Software Development Fundamentals courses](#) SIG
- B. [Security Knowledge Framework \(SKF\)](#) project
- C. [OpenSSF Best Practices Badge](#) project
- D. [OpenSSF Scorecard](#) project
- E. [Common Requirements Enumeration \(CRE\)](#) project
- F. [Concise & Best Practices Guides](#) SIGs
- G. [Education](#) SIG
- H. [Memory Safety](#) SIG

DevRel Community

AI/ML Security

Metrics & Metadata

- N. [Security Insights](#)
- O. [Security-Metrics: Risk Dashboard](#) project
- P. [Security Reviews](#) project
- AH. [Security Insights Spec](#) project

Projects

- AD. [Alpha & Omega](#) project
- AE. [Sigstore](#)
- AF. [Core Toolchain Infrastructure \(CTI\)](#)

Security Tooling

- Q. [SBOM Everywhere](#) SIG
- R. [OSS Fuzzing](#) SIG
- AI. [SBOMit](#) project
- AJ. [Protobom](#)

Vulnerability Disclosures

- I. [CVD Guides](#) SIGs
- J. [OSS-SIRT](#) SIG
- K. [Open Source Vuln Schema \(OSV\)](#) project
- L. [OpenVEX](#) SIG
- [OpenVEX](#) Project
- M. [Vuln Autofix](#) SIG

Securing Critical Projects

- U. [List of Critical OS Projects](#) SIG
- V. [criticality score](#) project
- W. [Census](#) SIG
- X. [Package Analysis](#) project
- Y. [allstar](#) project

Diversity, Equity, & Inclusion

Supply Chain Integrity

- S. [SLSA](#) project
- T. [S2C2F](#) project
- AJ. [Gittuf](#) project
- AK. [GUAC](#) project

End Users

- Z. [Threat Modeling](#) SIG

Securing Software Repositories

- AB. [Repository as a Service](#) Project