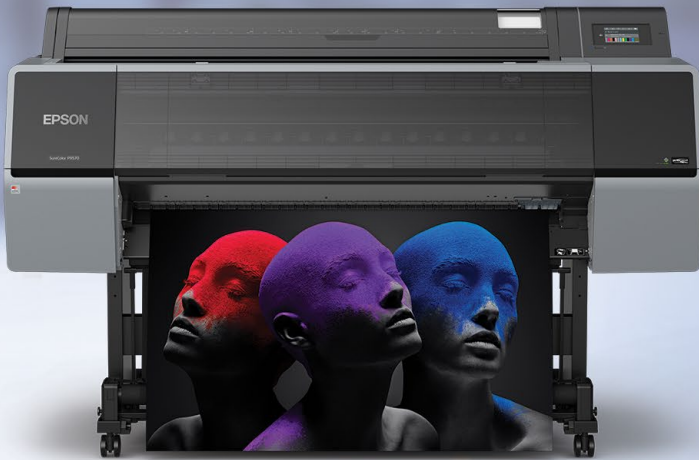


Epson Preferred<sup>SM</sup> Plus Extended Service Plans  
We've got you covered







© Tim Tadder



**There is no time for downtime when running your business.**

That's why we offer a variety of extended service plans, representing worry-free solutions that will help you maximize productivity and protect your investment.

Epson Preferred Plus Extended Service Plans offer users convenience and peace of mind by providing a way to extend the length of protection beyond the limited warranty **for up to a total of 5 years of continuous coverage<sup>1</sup>**. With a full portfolio of extended service plans designed to keep your equipment up and running, Epson's got you covered.

Plan Features	Plan Benefits
 <b>Next-Business-Day service plans<sup>2,3</sup></b>	<ul style="list-style-type: none"> <li>• <b>Get you back up and running quickly</b></li> </ul>
 <b>Maximize savings when you purchase with hardware</b>	<ul style="list-style-type: none"> <li>• <b>Save up to 40% on 4-year plans<sup>4</sup></b></li> </ul>
 <b>Epson Certified Technicians and genuine Epson parts<sup>5</sup></b>	<ul style="list-style-type: none"> <li>• <b>Worry-free support with world-class service</b></li> </ul>
 <b>Up to a total of 5 years of continuous coverage<sup>1</sup></b>	<ul style="list-style-type: none"> <li>• <b>Get maximum coverage and peace of mind</b></li> </ul>

**Limited warranty and extended service plans**

Our large-format printers come with a 1-year limited or 3-year limited warranty (D500 Series) with Next-Business-Day Whole Unit Exchange<sup>2</sup> or Next-Business-Day On-Site Repair Service<sup>3</sup>, depending on the model, featuring genuine Epson parts<sup>5</sup> and labor.

Maximize savings when you purchase an Epson Preferred Plus Extended Service Plan with your printer. Plans can also be purchased while you are covered under either your limited warranty or the extended service plan. Select a plan that best meets your coverage needs while providing a cost-effective way to protect your investment and manage costs. Out-of-coverage plans are also available.

# Epson Extended Service Plans (ESPs):



- **Maximize savings when you purchase plans with your printer** — save up to 40% on 4-year plans<sup>4</sup> versus purchasing stackable 1-year service plans at a later date for the equivalent duration
- **Stay in coverage** — if you let your limited warranty or extended service plan lapse, it could cost at least 50%<sup>6</sup> more to purchase an out-of-coverage extended service plan
- **Extend product protection** — beyond the limited warranty or extended service plan for up to a total of 5 years of continuous coverage<sup>1</sup>

## Next-Business-Day Whole Unit Exchange Plans<sup>2</sup>

- Help you get back up and running quickly with fast product replacement
- Shipping both ways is always on us

SureLab® D-Series	Plan Duration	Purchase with Hardware	In-Coverage Plans	Out-of-Coverage Plans
<b>SureLab® D-Series</b>				
500 Series	1-Year	PSSLD500E1	IWSLD500E1	OWSLD500E1
	2-Year	PSSLD500E2	N/A	N/A
1000 Series	1-Year	PSSLD1000E1	IWSLD1000E1	OWSLD1000E1
	2-Year	PSSLD1000E2	N/A	N/A
	4-Year	PSSLD1000E4	N/A	N/A
<b>SureColor® P-Series</b>				
800 Series	1-Year	PS800E1	IW800E1	OW800E1
900 Series	1-Year	PSP900E1	IWP900E1	OWP900E1
	2-Year	PSP900E2	N/A	N/A
	4-Year	PSP900E4	N/A	N/A
<b>SureColor® T-Series</b>				
2100 Series	1-Year	PST2100E1	IWT2100E1	OWT2100E1
	2-Year	PST2100E2	N/A	N/A
	4-Year	PST2100E4	N/A	N/A
3100 Series	1-Year	PST3100E1	IWT3100E1	OWT3100E1
	2-Year	PST3100E2	N/A	N/A
	4-Year	PST3100E4	N/A	N/A
3100M Series	1-Year	PST3100ME1	IWT3100ME1	OWT3100ME1
	2-Year	PST3100ME2	N/A	N/A
	4-Year	PST3100ME4	N/A	N/A
3100X Series	1-Year	PST3100XE1	IWT3100XE1	OWT3100XE1
	2-Year	PST3100XE2	N/A	N/A
	4-Year	PST3100XE4	N/A	N/A
<b>SpectroProofer</b>				
17 Series	1-Year	PSSP17E1	IWSP17E1	OWSP17E1
	2-Year	PSSP17E2	N/A	N/A
	4-Year	PSSP17E4	N/A	N/A
24 Series	1-Year	PSSP24E1	IWSP24E1	OWSP24E1
	2-Year	PSSP24E2	N/A	N/A
	4-Year	PSSP24E4	N/A	N/A
44 Series	1-Year	PSSP44E1	IWSP44E1	OWSP44E1
	2-Year	PSSP44E2	N/A	N/A
	4-Year	PSSP44E4	N/A	N/A

# Next-Business-Day On-Site Repair Service Plans<sup>3</sup>



- Get you back up and running quickly with fast service and repair
- Your repairs will be done by an Epson Certified Technician, using genuine Epson parts<sup>5</sup>

SureColor® P-Series	Plan Duration	Purchase with Hardware	In-Coverage Plans	Out-of-Coverage Plans
	SureColor® P-Series			
5000 Series	1-Year	PSP5000S1 <sup>7</sup>	IWP5000S1 <sup>7</sup>	OWP5000S1 <sup>7</sup>
	2-Year	PSP5000S2 <sup>7</sup>	N/A	N/A
	4-Year	PSP5000S4 <sup>7</sup>	N/A	N/A
5000CE Series with SpectroProofer	1-Year	PSP5000SPS1 <sup>7</sup>	IWP5000SPS1 <sup>7</sup>	OWP5000SPS1 <sup>7</sup>
	2-Year	PSP5000SPS2 <sup>7</sup>	N/A	N/A
	4-Year	PSP5000SPS4 <sup>7</sup>	N/A	N/A
6500 Series	1-Year	PSP6500S1	IWP6500S1	OWP6500S1
	2-Year	PSP6500S2	N/A	N/A
	4-Year	PSP6500S4	N/A	N/A
7000 Series	1-Year	PSP7000S1	IWP7000S1	OWP7000S1
	2-Year	PSP7000S2	N/A	N/A
	4-Year	PSP7000S4	N/A	N/A
7500 Series	1-Year	PSP7500S1	IWP7500S1	OWP7500S1
	2-Year	PSP7500S2	N/A	N/A
	4-Year	PSP7500S4	N/A	N/A
8000 Series	1-Year	PSP8000S1	IWP8000S1	OWP8000S1
	2-Year	PSP8000S2	N/A	N/A
	4-Year	PSP8000S4	N/A	N/A
8500 Series	1-Year	PSP8500S1	IWP8500S1	OWP8500S1
	2-Year	PSP8500S2	N/A	N/A
	4-Year	PSP8500S4	N/A	N/A
9000 Series	1-Year	PSP9000S1	IWP9000S1	OWP9000S1
	2-Year	PSP9000S2	N/A	N/A
	4-Year	PSP9000S4	N/A	N/A
9500 Series	1-Year	PSP9500S1	IWP9500S1	OWP9500S1
	2-Year	PSP9500S2	N/A	N/A
	4-Year	PSP9500S4	N/A	N/A
20000 Series (SCP20000SE, SCP20000PE)	1-Year	PSP20000S1	IWP20000S1	OWP20000S1
	2-Year	PSP20000S2	N/A	N/A
	4-Year	PSP20000S4	N/A	N/A
20570 Series	1-Year	PSP20570S1	IWP20570S1	OWP20570S1
	2-Year	PSP20570S2	N/A	N/A
	4-Year	PSP20570S4	N/A	N/A

SureColor® T-Series	Plan Duration	Purchase with Hardware	In-Coverage Plans	Out-of-Coverage Plans
	SureColor® T-Series			
3200 Series	1-Year	PST3200S1	IWT3200S1	OWT3200S1
	2-Year	PST3200S2	N/A	N/A
	4-Year	PST3200S4	N/A	N/A
3400 Series	1-Year	PST3400S1	IWT3400S1	OWT3400S1
	2-Year	PST3400S2	N/A	N/A
	4-Year	PST3400S4	N/A	N/A
3700 Series	1-Year	PST3700S1	IWT3700S1	OWT3700S1
	2-Year	PST3700S2	N/A	N/A
	4-Year	PST3700S4	N/A	N/A
5100 Series	1-Year	PST5100S1	IWT5100S1	OWT5100S1
	2-Year	PST5100S2	N/A	N/A
	4-Year	PST5100S4	N/A	N/A
5100M Series	1-Year	PST5100MS1	IWT5100MS1	OWT5100MS1
	2-Year	PST5100MS2	N/A	N/A
	4-Year	PST5100MS4	N/A	N/A
5200 Series	1-Year	PST5200S1	IWT5200S1	OWT5200S1
	2-Year	PST5200S2	N/A	N/A
	4-Year	PST5200S4	N/A	N/A
5200DR Series	1-Year	PST5200DRS1	IWT5200DRS1	OWT5200DRS1
	2-Year	PST5200DRS2	N/A	N/A
	4-Year	PST5200DRS4	N/A	N/A
5400 Series	1-Year	PST5400S1	IWT5400S1	OWT5400S1
	2-Year	PST5400S2	N/A	N/A
	4-Year	PST5400S4	N/A	N/A
5400M Series	1-Year	PST5400MS1	IWT5400MS1	OWT5400MS1
	2-Year	PST5400MS2	N/A	N/A
	4-Year	PST5400MS4	N/A	N/A
5700 Series	1-Year	PSPT5700S1	IWPT5700S1	OWPT5700S1
	2-Year	PST5700S2	N/A	N/A
	4-Year	PST5700S4	N/A	N/A
5700DM Series	1-Year	PST5700DMS1	IWT5700DMS1	OWT5700DMS1
	2-Year	PST5700DMS2	N/A	N/A
	4-Year	PST5700DMS4	N/A	N/A

SureColor® T-Series	Plan Duration	Purchase with Hardware	In-Coverage Plans	Out-of-Coverage Plans
	SureColor® T-Series			
7200 Series	1-Year	PST7200S1	IWT7200S1	OWT7200S1
	2-Year	PST7200S2	N/A	N/A
	4-Year	PST7200S4	N/A	N/A
7200DR Series	1-Year	PST7200DRS1	IWT7200DRS1	OWT7200DRS1
	2-Year	PST7200DRS2	N/A	N/A
	4-Year	PST7200DRS4	N/A	N/A
7700 Series	1-Year	PST7700S1	IWT7700S1	OWT7700S1
	2-Year	PST7700S2	N/A	N/A
	4-Year	PST7700S4	N/A	N/A
7700DM Series	1-Year	PST7700DMS1	IWT7700DMS1	OWT7700DMS1
	2-Year	PST7700DMS2	N/A	N/A
	4-Year	PST7700DMS4	N/A	N/A

Want to learn more about maximizing productivity with Epson Preferred Plus Extended Service Plans? Contact your Epson authorized reseller, call (800) 925-9587 or visit [www.epson.com/esp](http://www.epson.com/esp) today.

**1** Product comes with a 1-year limited warranty with the option to purchase extended service plans up to a total of 5 years of continuous coverage. Point-of-sale extended service plans must be purchased with hardware and in-coverage extended service plans can be purchased any time that you are covered under an Epson limited warranty or Epson extended service plan. **2** Expedited shipping not available in all areas. Orders must be placed and processed by 1 p.m. Pacific Time, Monday through Friday, excluding holidays. See service plan for details. **3** Geographic limitations may apply. Service request must be received and processed by 1 p.m. Pacific Time, Monday through Friday, excluding holidays. See service plan for details. **4** Savings based on purchasing extended service plans with hardware versus purchasing stackable 1-year service plans at a later date for the equivalent duration. **5** Please refer to Terms and Conditions for full details. Availability varies by model. Printhead limitations apply. Maintenance parts not included. **6** Based on MSRP of in-coverage versus out-of-coverage extended service plans. See individual plans for details. **7** Extended service plans for P5000 printers are Next-Business-Day Whole Unit Exchange service in Canada.

EPSON, SureColor, SureLab and SpectroProofer are registered trademarks of Seiko Epson Corporation. Epson Preferred is a trademark of Epson America, Inc. All other product and brand names are trademarks and/or registered trademarks of their respective companies. Epson disclaims any and all rights in these marks. Copyright 2024 Epson America, Inc. CPD-58987R6 7/24