



Objectifs

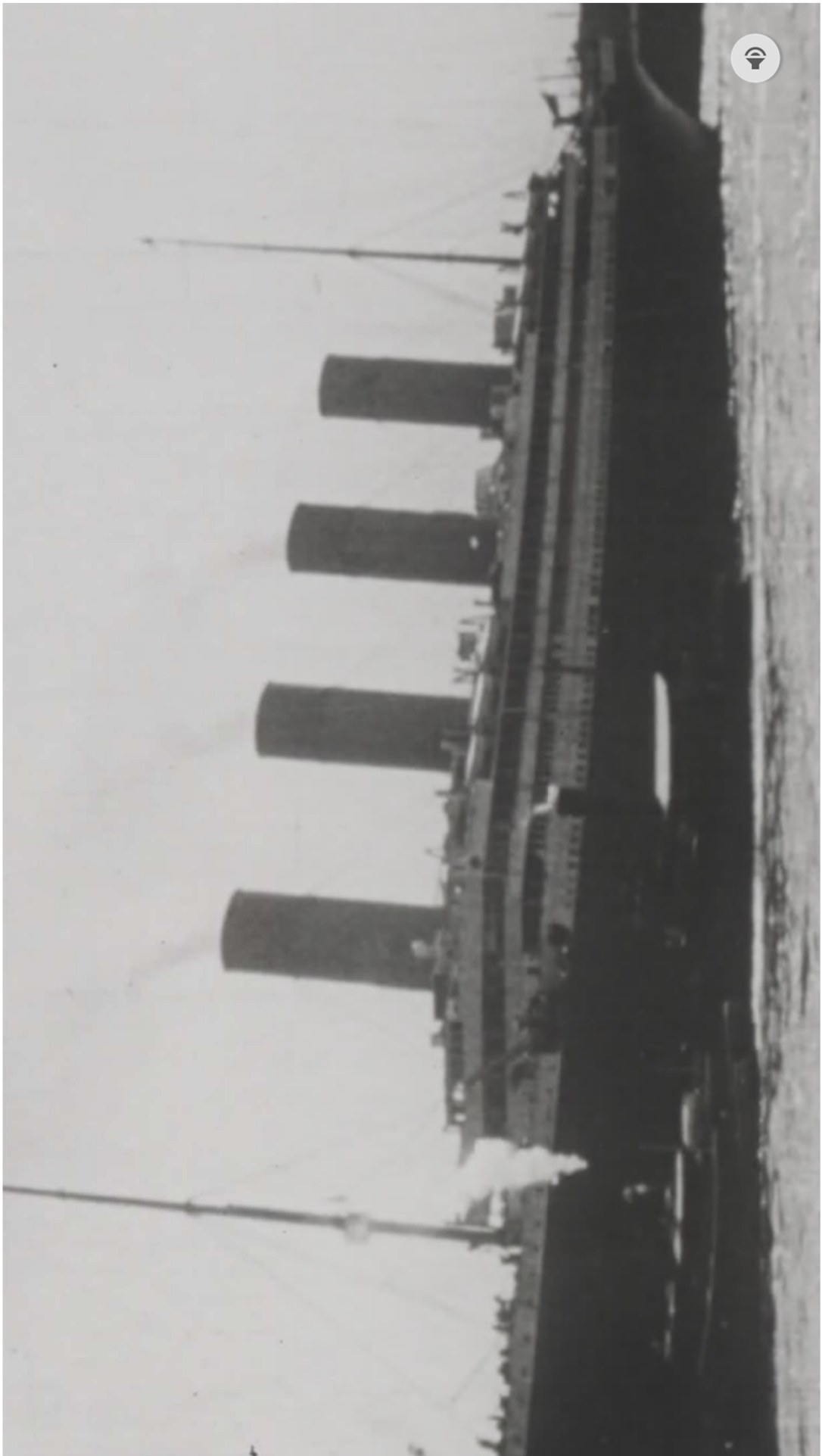
Dans ce cours on va:

- évoquer un fait historique,
- apprendre à lire et à préparer un article de journal,
- revoir les chiffres et les mesures,
- parler et comprendre en anglais

Recommandations

- Parler en anglais
- Participer activement
- Recopier les parties indiquées **COPY**
- Retrouver le cours et l'émission en *Replay* sur le site Lumni (Collège) de France 4





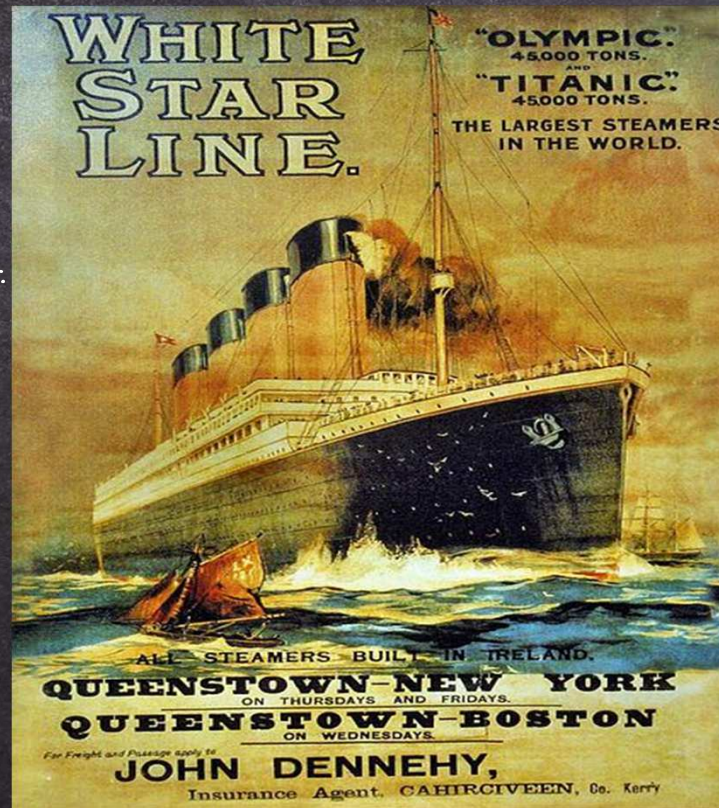


The Queen of the Ocean

Why "Queen"?

Parts of the ship:

- bow
- stern
- keel
- funnel

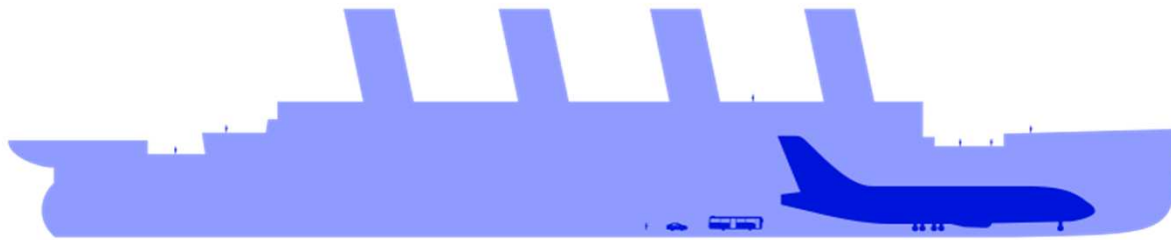


- English grammar uses the pronoun 'it' to refer to things but often the pronoun 'she' is used for ships.
- The Titanic was the largest 'Royal Mail Steamer' (RMS) of her time (1909-1911).

Record breaking numbers

45000
tons

882 ft 9in (269.1 m)



26 mph/
43 km/h

175 ft
(53.3 m)

➤ Place the nouns next to the right numbers:
HEIGHT / **WEIGHT** / **LENGTH** / **SPEED**

100 :

1000 :

1 inch =

1 foot =

1 mile =

Grammar Practice

Nouns

- the weight
- the speed
- the length
- the height
- the width

Adjectives

- large
- high
- fast
- long
- heavy

Superlatives: The Titanic was

- the largest steamer.
- the highest steamer.
- the fastest steamer.
- the longest steamer.
- the heaviest steamer.

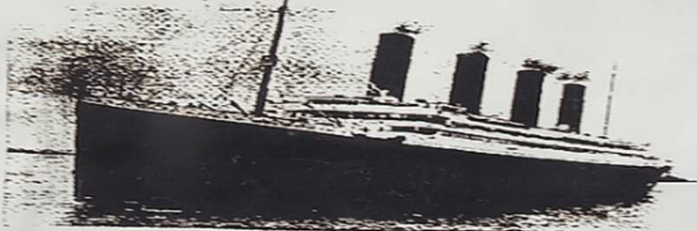
➤ Superlative:
The + short
adjective + EST

Advertisement

What ?



FIRST SAILING OF THE LATEST ADDITION TO THE
★ **WHITE STAR FLEET** ★
THE QUEEN OF THE OCEAN
TITANIC
★ **WORLD'S LARGEST OCEAN LINER** ★



LENGTH 882½ FT. OVER 45,000 TONS BEAM 92½ FT.
TRIPLE-SCREWS

★ **MAIDEN VOYAGE** ★
SOUTH HAMPTON TO NEW YORK

★ ★ DEPARTS APRIL 10th, 1912 ★ ★
Do Not Delay: Secure Your Tickets Through Agents or Direct From
★ **WHITE STAR LINE** ★ **QUEENSTOWN** ★
TICKETS FOR SALE HERE!!!!

When ?

Where ?

Tickets for sale

Prices in 1912

1st class
(£ 30 - £ 870)

2nd class
(£ 12)

3rd class
(£ 3 - £ 8)

3136093 3136093

WHITE STAR LINE.
ROYAL AND UNITED STATES MAIL STEAMERS.

ISMAI, IMRIE & CO.
1, COCKSPUR STREET, S.W.
31 LEADENHALL STREET, E.C.
LONDON.
30 JAMES STREET
LIVERPOOL
AND
CANUTE ROAD, SOUTHAMPTON

Agent at PARIS -
NICHOLAS MARTIN, 9 Rue Scivola

WHITE STAR LINE.
30 MARIA MARSDEN - GENOA.
31 PIAZZA DELLA BORRA - NAPLES.
32 STAR STREET - BOSTON.
3 BROADWAY - NEW YORK.
33 BELLEVILLE STREET - QUEBEC.
118 NOTRE DAME STREET WEST
QUEBEC TOWN.

Agent at PARIS -
NICHOLAS MARTIN, 9 Rue Scivola

OCEANIC STEAM NAVIGATION COMPANY, LIMITED OF GREAT BRITAIN

THIRD CLASS (BYEKAGE) PASSENGER'S CONTRACT TICKET.
(NOT TRANSFERABLE)

- A Contract Ticket in this form must be given to every person engaging a passage as a First Class Passenger in any ship proceeding from the British Isles to any Port out of Europe, and not within the Mediterranean Sea, immediately on the payment or deposit of the fare for such passage, and the receipt for the same shall be retained on the back of the Ticket.
- The Ticket must be correctly filled in, and the Ticket must be printed in clear legible characters, and lightly signed with the Captain's name and address, in full of the name of the vessel.
- The day and the month on which the Passenger sets to sea must be written in words and not in figures.
- Where more than one Ticket must not be withdrawn from the Passenger, nor any alteration, addition or increase made in it.
- This Ticket is Non-Transferable.
- A Contract Ticket, and not a separate receipt, is the only valid receipt for the fare, and is the only receipt which is valid in this form.

R.M.S. TITANIC of 45,000 Tons Register.
to take up Passengers at LIVERPOOL for NEW YORK.
on the 10 day of APRIL 1912.

NAME	AGE	Sex of Passenger	Rate
1			
2			
3			
4			
5			
6			
7			
8			

WILL OF FARE
The fare for the passage of a Passenger in any ship of the White Star Line, from the British Isles to any Port out of Europe, and not within the Mediterranean Sea, shall be as follows:—
First Class, £100; Second Class, £50; Third Class, £25.
The fare for the passage of a Passenger in any ship of the White Star Line, from any Port out of Europe to the British Isles, shall be as follows:—
First Class, £50; Second Class, £25; Third Class, £12.
The fare for the passage of a Passenger in any ship of the White Star Line, from any Port out of Europe to any other Port, shall be as follows:—
First Class, £100; Second Class, £50; Third Class, £25.
The fare for the passage of a Passenger in any ship of the White Star Line, from any Port out of Europe to any other Port, shall be as follows:—
First Class, £100; Second Class, £50; Third Class, £25.
The fare for the passage of a Passenger in any ship of the White Star Line, from any Port out of Europe to any other Port, shall be as follows:—
First Class, £100; Second Class, £50; Third Class, £25.

Signature of Joseph Bruce Ismay, Chairman of the Board, White Star Line, Ltd., London.

Prices today

£ 1,875 - £ 52,000
film stars and
millionaires

£ 750
businessmen

£ 190 - £ 500
immigrants

Say the numbers

£ 3

£ 13

£ 33

£ 333

£ 3, 333

- Three
- Thirteen
- Thirty-three
- Three hundred and thirty-three
- Three thousand three hundred and thirty-three

All on board

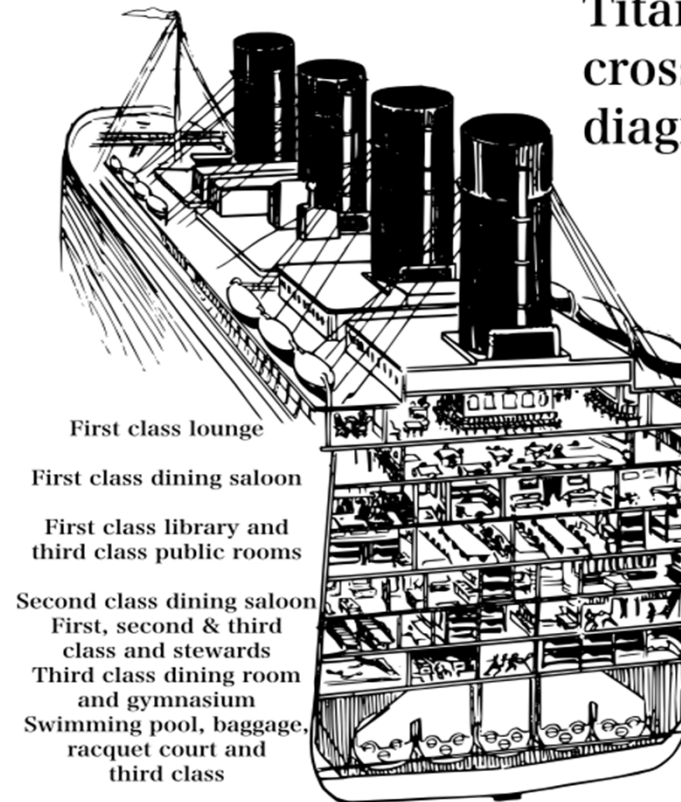
The Crew
(908)
commanded
by Captain
Edward
Smith .



The passengers (1, 316) :

- 325 in 1st class
- 285 in 2nd class
- 706 in 3rd class

Titanic
cross section
diagram



The maiden voyage





RMS Titanic



Methodology

- Concentrate
- Listen
- Take Notes
- Be prepared to listen

Listening comprehension

Construction

It was built in
Belfast (Ireland)

Maiden Voyage

It struck an iceberg
on Sunday 14th April
1912.

RMS



Titanic

Superlatives

- The Titanic had the most advanced technology.
- The most famous maritime disaster.
- The worst maritime disaster.

What's in the news?



Edition
Price

The Newspaper

The date

THE HEADLINE

PHOTO

SUBTITLE (SOURCE)

ARTICLE (S)

Front page

WHITE STAR LINER TITANIC.
Largest Steamship in the World, Which Has Hit an Iceberg on Her First Voyage Here.

NEW YORK, MONDAY, APRIL 15, 1912.—EIGHTEEN PAGES.

**NEW LINER TITANIC HITS AN ICEBERG;
SINKING BY THE BOW AT MIDNIGHT;
WOMEN PUT OFF IN LIFE BOATS;
LAST WIRELESS AT 12:27 A. M. BLURRED**

LATEST NEWS FROM THE SINKING SHIP.

CAPE RACE, N. F., Sunday night, April 14.—At 10:25 o'clock to-night the White Star line steamship Titanic called "C. Q. D." to the Marconi wireless station here, and reported having struck an iceberg. The steamer said that immediate assistance was required.

Half an hour afterward another message came reporting that they were sinking by the head and that women were being put off in the lifeboats.

The weather was calm and clear, the Titanic's wireless operator reported, and gave the position of the vessel as 41.46 north latitude and 50.14 west longitude.

The Marconi station at Cape Race notified the Allan liner Virginian, the captain of which immediately advised that he was proceeding for the scene of the disaster.

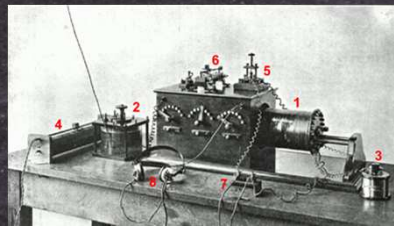
The Virginian at midnight was about 170 miles distant from the Titanic and expected to reach that vessel about 10 A. M. Monday.

2 A. M., Monday.—The Olympic at an early hour this, Monday, morning, was in latitude 40.32 north and longitude 61.18 west. She was in direct communication with the Titanic, and is now making all haste toward her.

The steamship Baltic also reported herself as about 200 miles east of the Titanic, and was making all possible speed toward her.

The last signals from the Titanic were heard by the Virginian at 12:27 A. M.

The wireless operator on the Virginian says these signals were blurred and ended abruptly.



The New York Times.

Newspaper article

The New York Times.

NEW YORK, MONDAY, APRIL 15, 1912—EIGHTEEN PAGES

NEW LINER TITANIC HITS AN ICEBERG; SINKING BY THE BOW AT MIDNIGHT; WOMEN PUT OFF IN LIFE BOATS; LAST WIRELESS AT 12:27 A. M. BLURRED

LATEST NEWS FROM THE SINKING SHIP.

CAPE RACE, N. F., Sunday night, April 14.—At 10:25 o'clock to-night the White Star line steamship Titanic called "C. Q. D." to the Marconi wireless station here, and reported having struck an iceberg. The steamer said that immediate assistance was required.

Half an hour afterward another message came reporting that they were sinking by the head and that women were being put off in the lifeboats.

The weather was calm and clear, the Titanic's wireless operator reported, and gave the position of the vessel as 41.46 north latitude and 50.14 west longitude.

The Marconi station at Cape Race notified the Allan liner Virginian, the captain of which immediately advised that he was proceeding for the scene of the disaster.

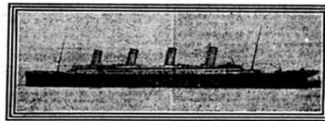
The Virginian at midnight was about 170 miles distant from the Titanic and expected to reach that vessel about 10 A. M. Monday.

2 A. M., Monday.—The Olympic at an early hour this, Monday, morning, was in latitude 40.32 north and longitude 61.18 west. She was in direct communication with the Titanic, and is now making all haste toward her.

The steamship Baltic also reported herself as about 200 miles east of the Titanic, and was making all possible speed toward her.

The last signals from the Titanic were heard by the Virginian at 12:27 A. M.

The wireless operator on the Virginian says these signals were blurred and ended abruptly.



WHITE STAR LINER TITANIC.

Largest Steamship in the World, Which Has Hit an Iceberg on Her First Voyage Here.

Allan Liner Virginian Now Speeding Toward the Big Ship.

BALTIC TO THE RESCUE, TOO

The Olympic Also Rushing To Give Aid—Other Ships Within Call.

CARMANIA DODGED BERGS

Reports French Liner Niagara Injured and Several Ships Caught.

BIG TITANIC'S FIRST TRIP

Bringing Many Prominent Americans, and Was Due in New York To-morrow.

MISHAP AT VERY START

Narrowly Escaped Collision with the American Liner New York When Leaving Port.

Special to The New York Times.

HALIFAX, N. S., April 14.—A wireless dispatch received to-night by the Allan line officials here from Capt. Orambell of the steamer Virginian, states that the White Star liner Titanic struck an iceberg off the Newfoundland coast and flamed out wireless calls for immediate assistance.

The Virginian put on full speed and headed for the Titanic.

No particulars have been received as to the extent of the damage sustained by Titanic.

Copyright, 1912, by The New York Times.

Newspaper article

Sunday night, April 14 - at 11.45 pm The White Star line steamship, the Titanic sent a wireless indicating that five minutes earlier it **had struck** an iceberg. The steam liner needed immediate assistance.

At 12.30 am, Monday, April 15 another message came reporting that they were sinking by the bow. There were not enough lifeboats for all the passengers so Captain Edward Smith **had decided** to evacuate women and children first.

The weather was calm and clear but temperatures were below zero. The nearest ship was the Carpathia at 56 miles, some 4 hours away.

At 2.10 am another wireless was detected saying that the Titanic **had broken** into two, the bow was completely under water and the lights **had gone** out.

By 2.19 am the stern of the ship rose above the water and 18 out of the 20 lifeboats **had been lowered**.

The last signals from the Titanic were heard by the Carpathia at 2.27 am (12.27 local time). The signals were blurred and ended abruptly.

Choose a headline

Titanic's final hour

The sinking of the
Titanic

Unlucky strike : the
Titanic hits an
iceberg and sinks

Sunday night, April 14 - at 11.45 pm The White Star line steamship, the Titanic sent a wireless indicating that five minutes earlier it **had struck** an iceberg. The steam liner needed immediate assistance.

At 12.30 am, Monday, April 15 another message came reporting that they were sinking by the bow. There were not enough lifeboats for all the passengers so Captain Edward Smith **had decided** to evacuate women and children first.

The weather was calm and clear but temperatures were below zero. The nearest ship was the Carpathia at 56 miles, some 4 hours away.

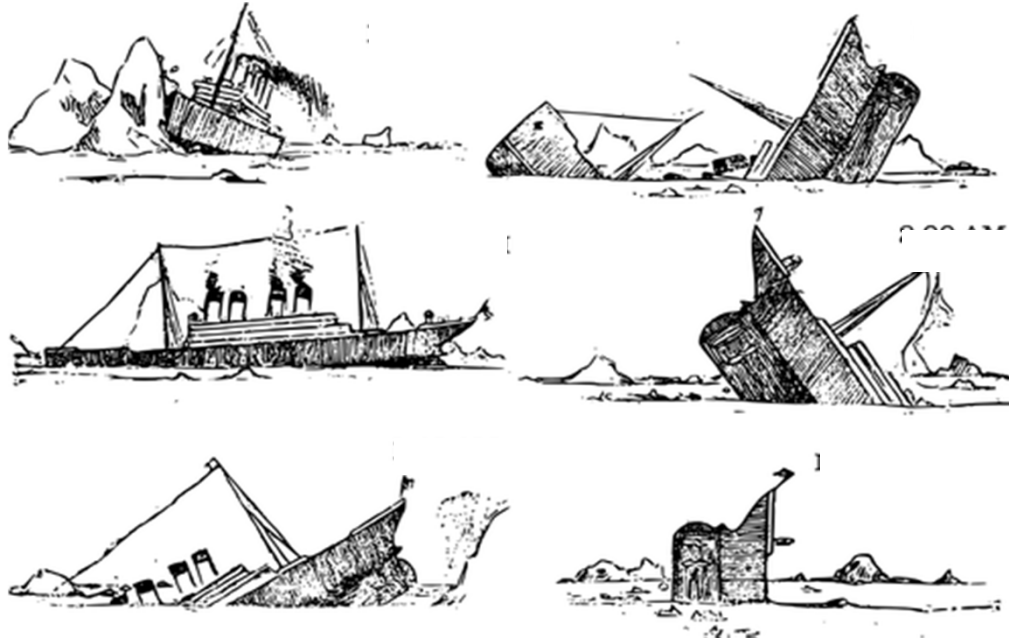
At 2.10 am another wireless was detected saying that the Titanic **had broken** into two, the bow was completely under water and the lights **had gone** out.

By 2.19 am the stern of the ship rose above the water and 18 out of the 20 lifeboats **had been lowered**.

The last signals from the Titanic were heard by the Carpathia at 2.27 am (12.27 local time). The signals were blurred and ended abruptly.

The sinking of the Titanic

- Place the correct time next to the pictures : 2.10 am / 11.40 pm / 2.27 am / 12.30 pm / 11.45 pm / 2.19 am



Grammar Practice

past perfect

COPY

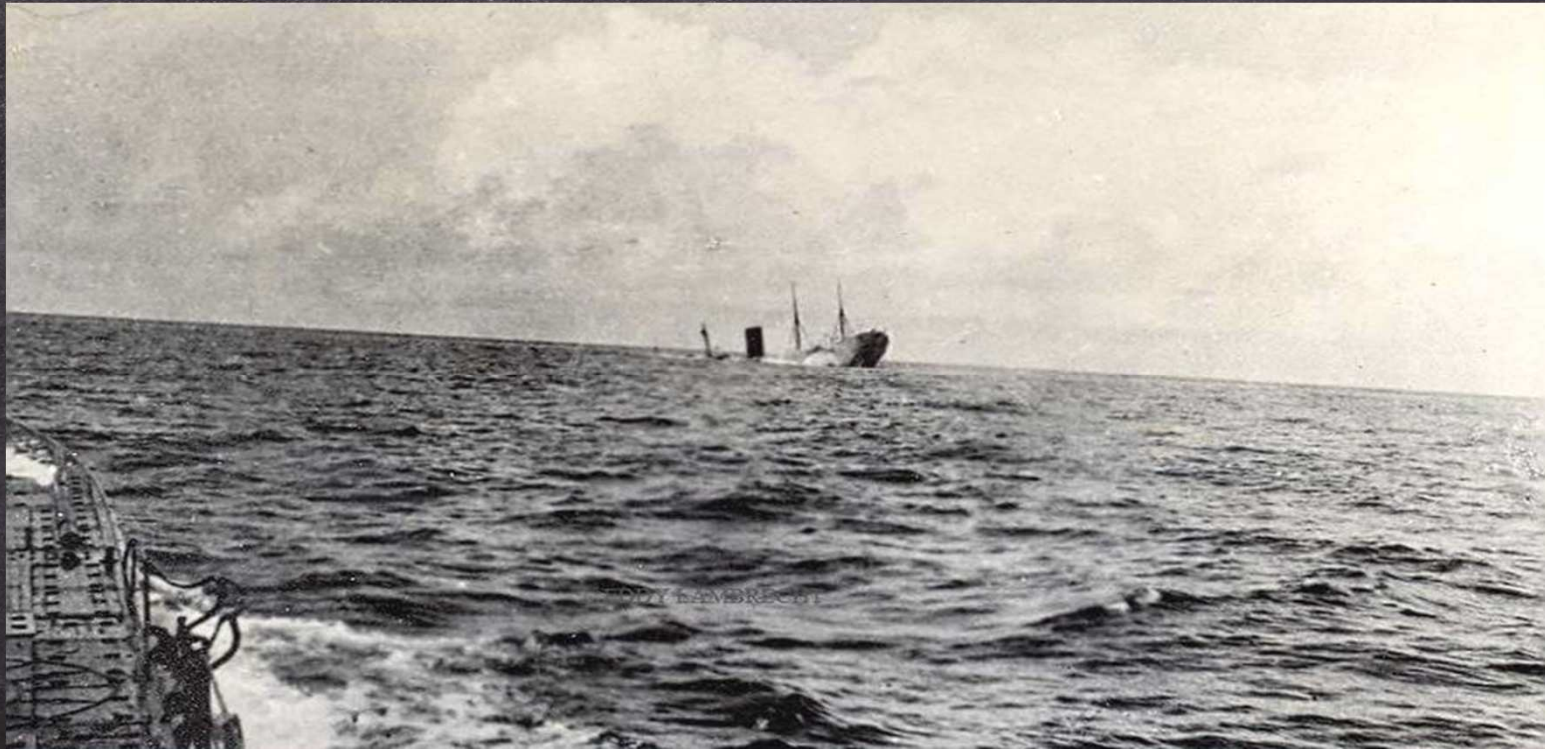
Ex: The Titanic **had struck** an iceberg.

The Captain Edward Smith **had decided** to evacuate.

Auxiliaire Have + participe passé
au passé du verbe

- Il permet de faire le bilan d'événements passés.
- C'est le 'passé dans le passé', une sorte de 'passé de narration.'
- On l'emploie pour un récit entier qui est au passé et où l'on évoque des actions antérieures aux autres actions passées.

Be a reporter



Explain the events

➤ hit / send / start sinking / break in two / rise / sink completely

At 11.40 pm

...had hit an iceberg.



At 2.10 am

...had broken in two.

At 11.45 pm

...had sent a wireless.



At 2.19 am

...had risen.

At 12.30 pm

...had started sinking.



At 2.27am

...had sunk completely.

The casualties

1st class



2nd class



3rd class



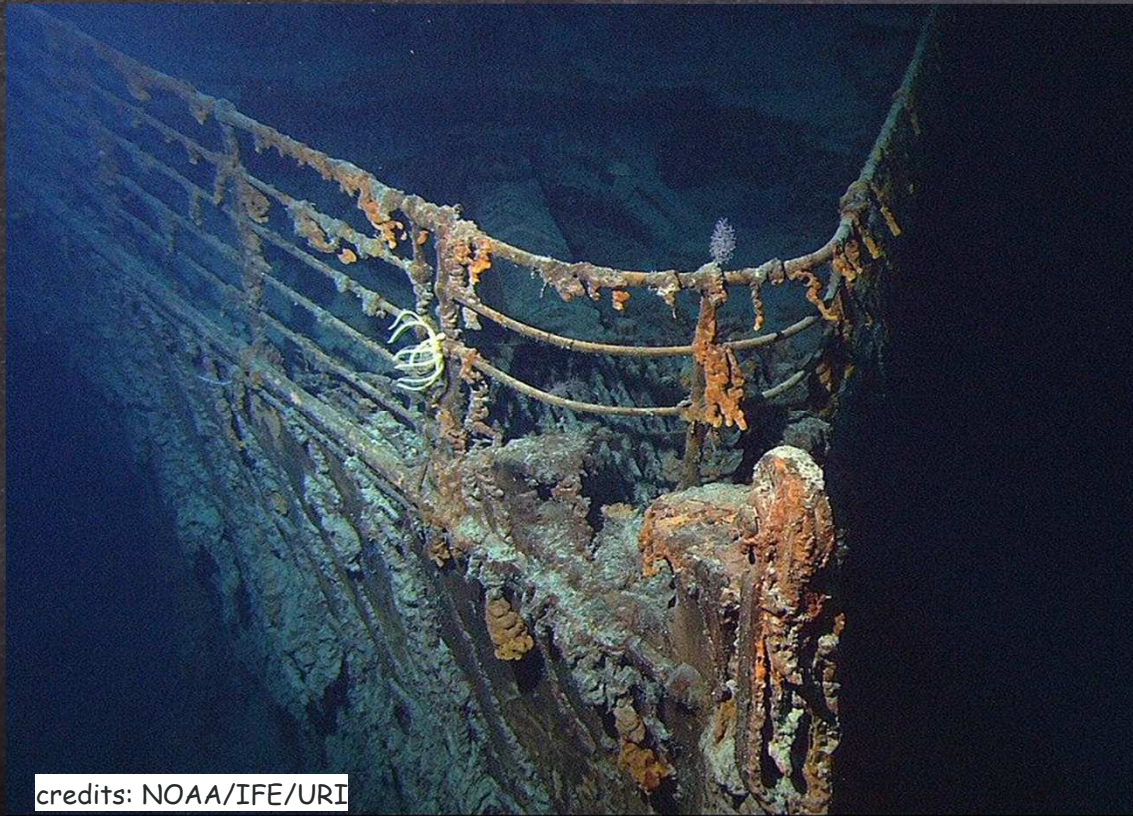
The Crew



711 people survived and most of them were 1st class passengers.

1,505 people perished and most of them were 3rd class passengers.

The shipwreck



credits: NOAA/IFE/URI

Listen and
write down
these facts.

- 1985
- 12,500 feet
- 370 miles from Newfoundland
- Bow intact
- Stern in pieces

Grammar Practice

deriving words

COPY

Ex: (to) sink + able ➤ sinkable ➔ unsinkable

Now, it's your turn :

- think ➤ unthinkable
- forget ➤ unforgettable
- believe ➤ unbelievable

Let's recap

The Titanic was built in 1909. [REDACTED] was considered as [REDACTED] and was the largest [REDACTED] and fastest steam [REDACTED] of her time.

COPY

Her [REDACTED] voyage began on the April 10th 1912 when she left Southampton for [REDACTED].

On April 14th she struck an [REDACTED] and rapidly sunk. 1,505 perished and 711 survived. The [REDACTED] still lies under the ocean today.

This un- [REDACTED] disaster still captures our imagination.

On récapitule...

COPY

Vocabulary:

a steamer/ ocean
liner /superliner
a funnel
the stern
the bow
the keel
a maiden voyage
a crew
a shipwreck
a hundred
a thousand

Grammar :

- superlatives
- past perfect
- nouns
- adjectives

Measurements :

1 inch
1 foot
1 mile (mph)
1 ton

the newspaper
an article
the headline
the by line

Culture:

RMS Titanic
Captain E. Smith
The Carpathia

Pour aller plus loin

- Ecrire un article de journal sur un événement historique.
- Faire un travail collaboratif pour élaborer un journal écrit comprenant plusieurs articles de journaux.
- Grammar : <https://www.englisch-hilfen.de/en/>



Stay
safe

Protect
yourself



Ressources

- Video : <https://www.youtube.com/watch?v=AiXPaiRGT3Q&feature=youtu.be>
- Titanic: https://fr.m.wikipedia.org/wiki/Fichier:Verbleich_Titanic.png + screen shot of a film
- White star line : https://fr.wikipedia.org/wiki/Liste_des_havires_de_la_White_Star_Line
- Tickets : https://fr.m.wikipedia.org/wiki/Fichier:Ticket_for_the_Titanic,_1912.jpg
- size : <https://freesvg.org/titanic-diagram>
- Advertisement:
https://commons.wikimedia.org/wiki/File:19120415_Titanic_and_Olympic_advertisement_-_The_New_York_Times.png
- Titanic route: <https://fr.m.wikipedia.org/wiki/Fichier:TitanicRoute.png>
- Titanic sinks : <https://freesvg.org/titanic-sinking>
- Titanicsideplan:
https://commons.wikimedia.org/wiki/File:Titanic_side_plan_annotated_English.png
- Shipwreck:
https://en.wikipedia.org/wiki/Wreck_of_the_RMS_Titanic#/media/File:Titanic_wreck_bow.jpg
- article : <https://fr.m.wikipedia.org/wiki/Fichier:Titanic-NYT.jpg>
- audio : <https://commons.wikimedia.org/wiki/File:En-titanic.ogg>