

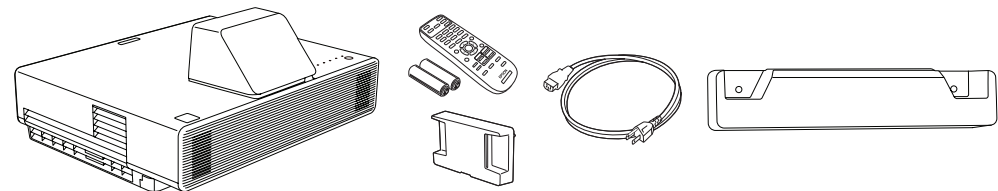
# Quick Setup

**IMPORTANT:** Before using this product, make sure you read these instructions and the safety instructions in the online *User's Guide*.

**Note:** Your product may differ from the illustrations on this sheet, but the instructions are the same.

## Contents

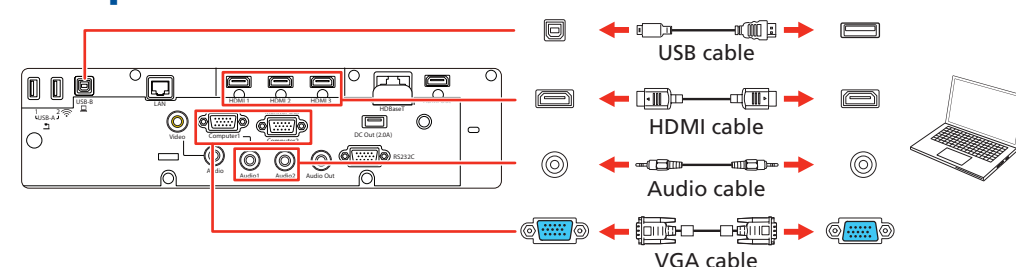
Make sure your projector box includes all of these parts:



## Connect the projector

Choose from the following connections. See the sections below or the online *User's Guide* for details.

### Computer



### HDMI port

Connect one end of an HDMI cable to one of the projector's **HDMI** ports and the other end to an HDMI port on your computer.

### Computer port

Connect one end of a VGA cable to one of the projector's **Computer** ports and the other end to your laptop or computer's monitor port. Make sure to switch your laptop to external display (see "Troubleshooting" on the back of this sheet). You can also connect an audio cable to the **Audio** port that corresponds with the **Computer** port you are using.

### USB port

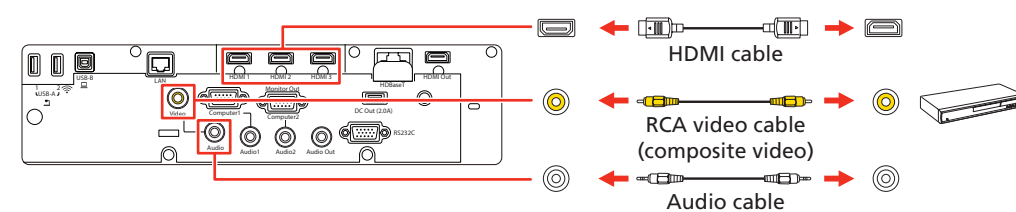
Connect the square end of a USB cable to the projector's **USB-B** (square) port. Connect the flat end of the cable to any USB port on your computer.

**Windows® 7 or newer:** After turning on the projector, follow the on-screen instructions to install the Epson® USB Display software (**EMP\_UDSE.EXE**; only on first connection). If the software screen does not display automatically, open **My Computer**, **Computer**, or **This PC**, then double-click **EPSON\_PJ\_UD**.

**OS X 10.8.x or higher:** After turning on the projector, the setup folder for USB Display appears in the Finder. Double-click **USB Display Installer** and follow the on-screen instructions to install the Epson USB Display software (only on first connection). If the software screen does not display automatically, double-click **EPSON\_PJ\_UD**, then double-click **USB Display Installer**.

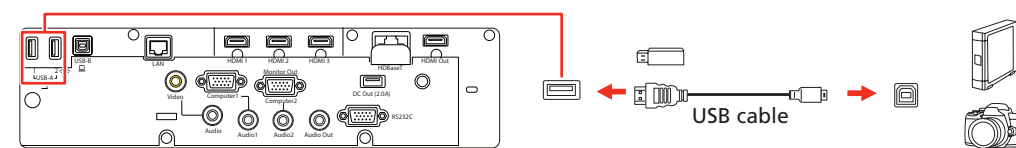
### Video device

Connect multiple video devices and use the **Source Search** button on the projector or remote control to switch between them. For more information on playing sound through the projector, see the online *User's Guide*.



### USB device

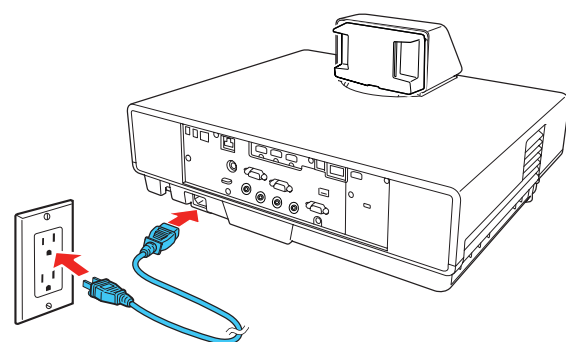
Connect a supported digital camera, USB flash drive, or USB storage device to one of the projector's **USB-A** (flat) ports.



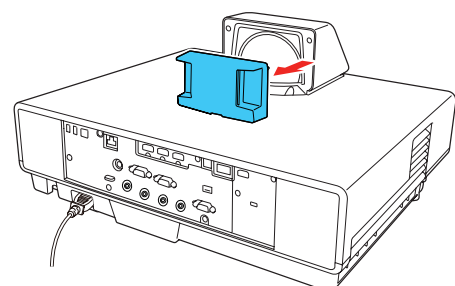
If you connect a digital camera, USB flash drive, or USB storage device, you can use the projector's **PC Free** feature. See the online *User's Guide* for details.

## Turn on your equipment

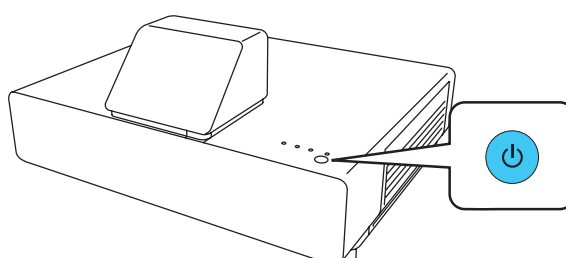
**1** Plug in the projector. The power light on the projector flashes blue, and then stays on.



**2** Remove the lens cap.



**3** Press the power button on the projector or remote control. The projector beeps and the Status light flashes blue, then stays on.



**Note:** To shut down the projector, press the power button twice.

**4** Use the arrow and buttons on the control panel or remote control to select the desired projector orientation, language, date, and time.

**5** The default aspect ratio is 16:9. Select **Yes** if you want to change the aspect ratio and display a test pattern to help you focus the image. Otherwise, select **No**.

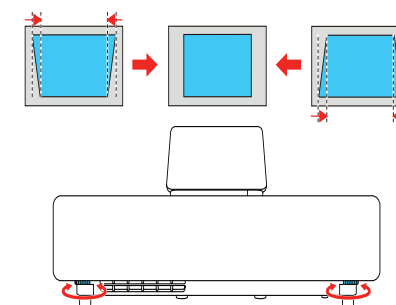
**6** Turn on your computer or video source.

## Adjust the image

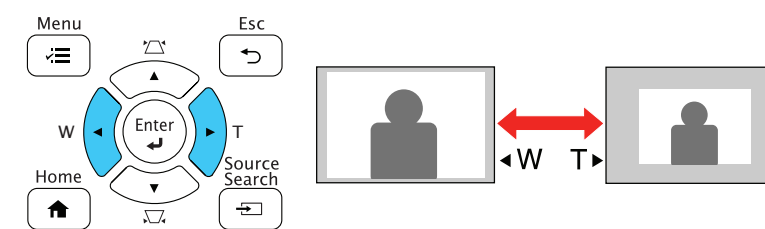
**1** If you don't see an image, press the **Source Search** button on the projector or remote control to select the image source.

**Note:** If you still see a blank screen or have other display problems, see the troubleshooting tips on the back of this sheet.

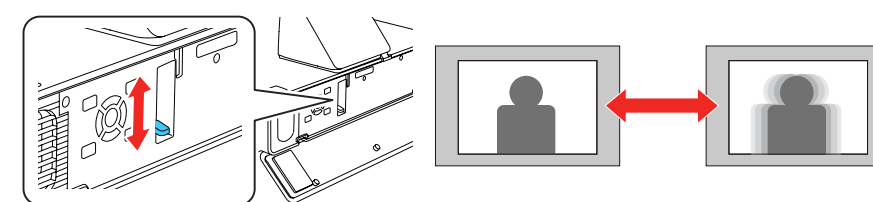
**2** To adjust the image position, move the projector in the appropriate direction while keeping it level and parallel to the screen. You can also extend or retract the front feet to correct vertical distortion, if necessary.



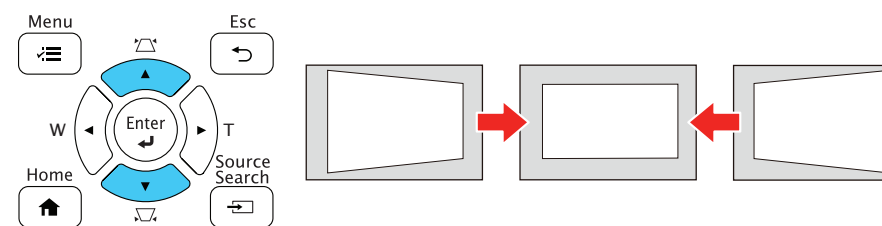
**3** To enlarge or reduce the image without moving the projector, open the front cover and press the **W** (wide) or **T** (tele) button, as needed.



**4** To sharpen the image, move the focus lever at the front of the projector up or down.

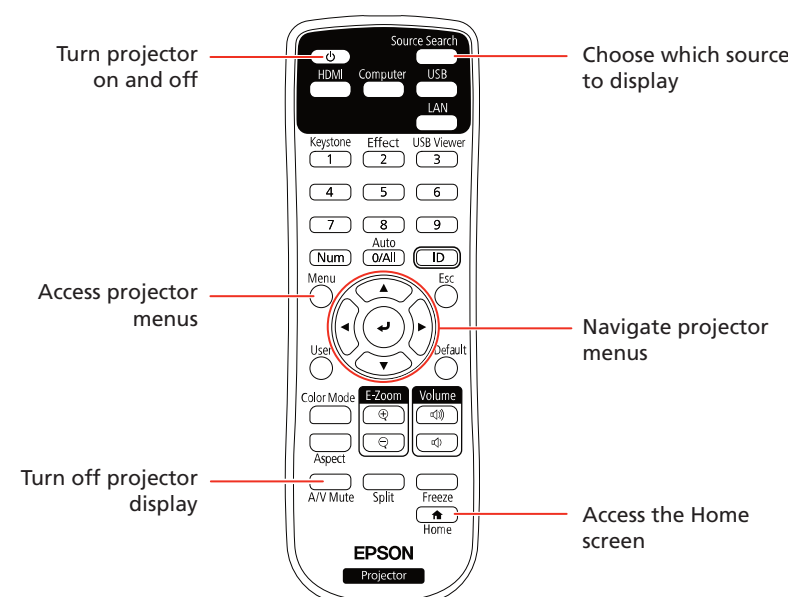
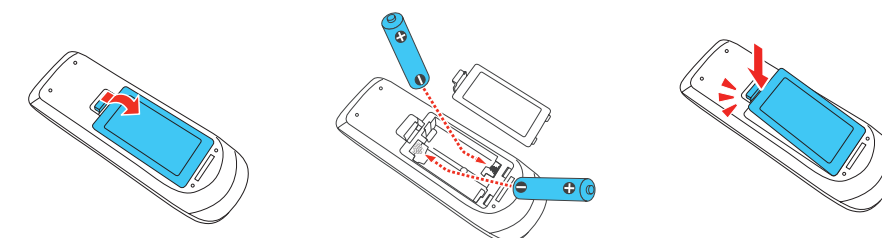


**5** If your image looks like or , you may have placed the projector off to one side of the screen at an angle. Place the projector directly in front of the center of the screen, facing the screen squarely. If you can't move the projector, press the or button on the control panel and then use the arrow buttons to adjust the horizontal image shape as needed.



## Using the remote control

Install two AA batteries as shown below.



For more information on using the remote control, see the online *User's Guide*.

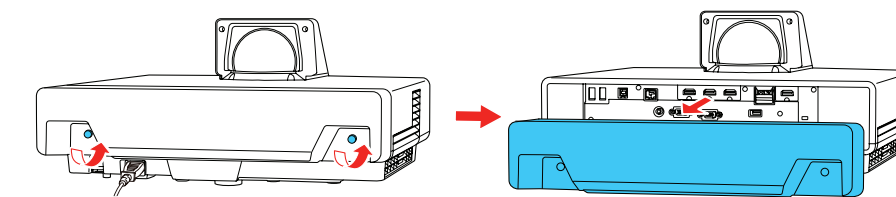
## Setting up a wireless connection

Follow these steps to set up the projector for a wireless network connection.

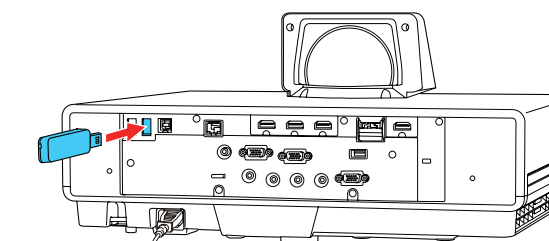
To project wirelessly, you need to install the optional wireless LAN module (part number V12H005A02).

### Install the optional wireless LAN module

**1** Remove the two cable cover screws to take off the cable cover, if necessary.



**2** Insert the wireless LAN module into the **USB-A2** port.



**Note:** The light on the wireless LAN module turns on when the module is installed and operating. The light flashes when the module is communicating over the network.

### Select wireless network settings

**1** Press the **Menu** button on the remote control.

**2** Select the **Management** menu and press .

**3** Make sure the **Wireless LAN Power** setting is on.

**4** Select the **Network** menu and press .

**5** Select **Network Settings** and press .

**6** Select **Wireless LAN** as the **Priority Control Interface** setting.

**7** Select one of the following as the **Simple AP** setting:

- **On** for a direct connection to a computer, tablet, or smartphone.
- **Off** to connect your projector to a router or access point.

**8** Select any other wireless settings as necessary. See the online *User's Guide* for details.

**9** When you are finished, return to the Network Settings menu, select **Set**, and follow the on-screen instructions to save your settings and exit the menus.

### Install the optional software

Download the Epson iProjection™ software and manual from your product's support page (see "Where to get help" on the back of this sheet) and install the program on each computer that will project over the network.

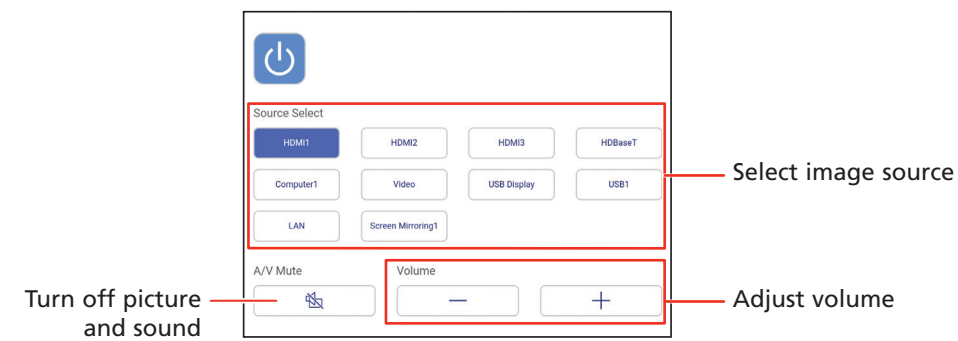
To monitor and control your projector over the network, download and install the Epson Projector Management software (Windows only) and manual from your product's support page (see "Where to get help").



## Using web remote

You can use a standard web browser to control the projector through the network. A virtual remote control on your computer screen lets you perform many of the same functions as you can with the physical remote control.

- 1 Open your web browser and enter the IP address of the projector you want to monitor in the browser's address bar.  
  
If you're not sure what the IP address of the projector is, turn the projector on and select **Wired LAN Info.** or **Wireless LAN Info.** from the Network menu to display the IP address of the projector. (Do not enter the leading zeroes.)
- 2 Enter **EPSONWEB** as the default user name and **admin** as the default password, then click **OK**. The Epson Web Control menu opens.
- 3 Select **Basic Control**. If you see a login screen, enter **EPSONREMOTE** as the user name and **guest** as the password.
- 4 Use the on-screen buttons to operate the projector, as you would using the remote control. See the online *User's Guide* for details.



## Using the Epson iProjection app

You can project wirelessly from a mobile device (iOS, Android™, or Chromebook™) using the Epson iProjection app and a QR code.

- 1 Use the following QR code to download and install the Epson iProjection app.



- 2 If you connected the projector to a network wirelessly, make sure to connect your mobile device to the same network.
- 3 Press the **LAN** button on the remote control to display a QR code on the projector screen.
- 4 Start Epson iProjection on your mobile device.
- 5 Use the QR code reader feature to read the QR code displayed.



- 6 Follow the app instructions to connect your device to the projector.

For more information on setting up and using this app, visit [www.epson.com/iprojection](http://www.epson.com/iprojection) (U.S.) or [www.epson.ca/iprojection](http://www.epson.ca/iprojection) (Canada), or [www.latin.epson.com/iprojection](http://www.latin.epson.com/iprojection) (Caribbean).

## Managing content

You can manage content from your computer using the Epson Projector Content Manager software, or over the network using a web browser (Epson Web Control) or the Epson iProjection app.

### Using the Content Manager software

The Epson Projector Content Manager software allows you to add images and movies to playlists and load them easily and directly to your projector via USB for playback. Make sure **Content Playback** is set to **On** in the Operation menu.

**Note:** Download and install the *Epson Projector Content Manager software from your product's support page* (see "Where to get help"). For more information, see the *online Epson Projector Content Manager Operation Guide* or the *online User's Guide*.

## Troubleshooting

- If you see a **No signal** message after turning on the projector, make sure your computer or video device is properly connected.
- If you see a blank screen, check the following:
  - Make sure the lens cap is removed.
  - Make sure the power light on the projector is blue and not flashing.
  - Press the power button on the control panel or the **A/V Mute** button on the remote control to wake the projector from standby or sleep mode, if necessary.
- If you see a blank screen when a computer is connected, check the following:
  - If you're using a Windows laptop, press the function key on your keyboard that lets you display on an external monitor. It may be labeled **CRT/LCD** or have an icon such as . You may have to hold down the **Fn** key while pressing it (such as **Fn + F7**). Wait a moment for the display to appear.  
  
On Windows 7 or later, hold down the Windows key and press **P** at the same time, then click **Duplicate**.
  - If you're using a Mac laptop, open **System Preferences** and select **Displays**. Click the **Arrangement** tab and select the **Mirror Displays** checkbox.
- If the projector does not respond to remote control commands, make sure the batteries in the remote control are installed correctly. Replace the batteries if necessary.

## Registration

Register today to get product updates and exclusive offers. You can register online at [www.epson.com/webreg](http://www.epson.com/webreg).

## Where to get help

### Manuals

For more information about using the projector, see the online manuals. You can view or download the manuals from the Epson website, as described below.

### Internet support

Visit [www.epson.com/support](http://www.epson.com/support) (U.S.) or [www.epson.ca/support](http://www.epson.ca/support) (Canada) and search for your product to download software and utilities, view manuals, get FAQs and troubleshooting advice, or contact Epson.

### Telephone support services

To use the Epson PrivateLine® Support service, call (800) 637-7661. This service is available for the duration of your warranty period. You may also speak with a support specialist by calling (562) 276-4394 (U.S.) or (905) 709-3839 (Canada).

Support hours are 6 AM to 8 PM, Pacific Time, Monday through Friday, and 7 AM to 4 PM, Pacific Time, Saturday. Days and hours of support are subject to change without notice. Toll or long distance charges may apply.

## Optional accessories

For a list of optional accessories, see the online *User's Guide*.

You can purchase screens or other accessories from an Epson authorized reseller. To find the nearest reseller, call 800-GO-EPSON (800-463-7766). Or you can purchase online at [www.epsonstore.com](http://www.epsonstore.com) (U.S. sales) or [www.epsonstore.ca](http://www.epsonstore.ca) (Canadian sales).

**EPSON**  
EXCEED YOUR VISION



EPSON and PowerLite are registered trademarks, EPSON Exceed Your Vision is a registered logomark, and Epson iProjection is a trademark of Seiko Epson Corporation.

PrivateLine is a registered trademark of Epson America, Inc.

Windows is a registered trademark of Microsoft Corporation in the United States and/or other countries.

Mac and OS X are trademarks of Apple Inc., registered in the U.S. and other countries.

Android and Chromebook are trademarks of Google LLC.

General Notice: Other product names used herein are for identification purposes only and may be trademarks of their respective owners. Epson disclaims any and all rights in those marks.

This information is subject to change without notice.

© 2020 Epson America, Inc., 6/20

Printed in XXXXXX

CPD-59308