

WF-C579R Start Here

IMPORTANT: Before using this product, make sure you read these instructions and the safety instructions in the online *User's Guide*.

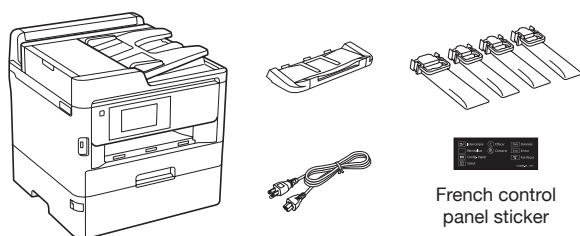
Note: This printer is designed for use with Epson® ink packs only, not third-party ink. For important ink information, visit www.epson.com/epsonink (U.S.) or www.epson.ca/epsonink (Canada) or see your printer box.

Important Safety Instructions: When using telephone equipment, you should always follow basic safety precautions to reduce the risk of fire, electric shock, and personal injury, including the following:

- Do not use the Epson product near water.
- Always keep this guide handy.
- Avoid using a telephone during an electrical storm. There may be a remote risk of electric shock from lightning.
- Do not use a telephone to report a gas leak in the vicinity of the leak.

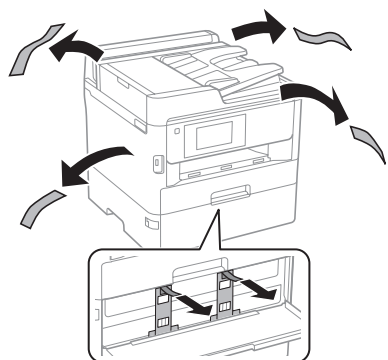
Caution: To reduce the risk of fire, use only a No. 26 AWG or larger telecommunication line cord.

1 Unpack



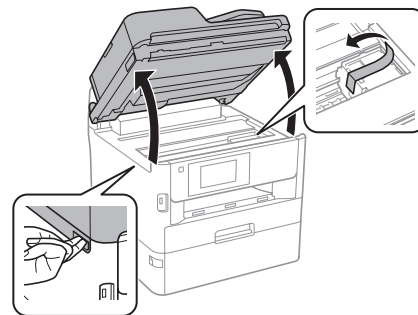
Warning: The product is heavy and should be lifted and moved by two people.

- 1 Remove all protective materials from the product.

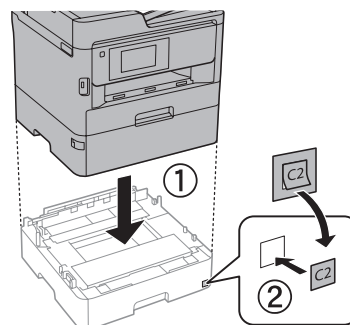


Note: Keep the two protective pieces shown after removing them from inside the product. You will need them if you transport your product. See your product's online *User's Guide* for transportation instructions.

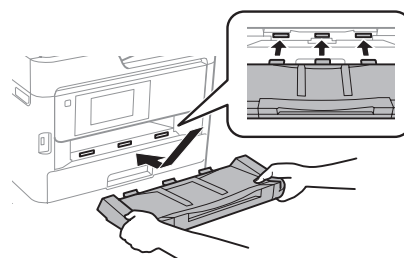
- 2 Lift up the scanner unit and remove all protective materials from inside the product, then close the scanner unit.



- 3 If your product has an additional paper cassette unit, place the product on the included paper cassette unit as shown and attach the included sticker.

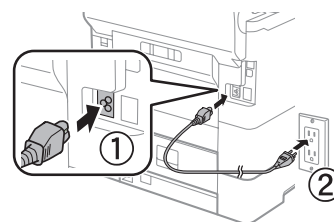


- 4 Insert the output tray, then set it down gently.



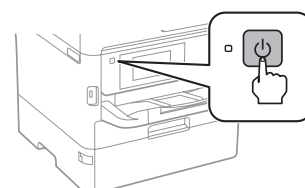
2 Turn on and configure

- 1 Connect the power cord to the back of the product and to an electrical outlet.



Caution: Do not connect to your computer yet.

- 2 Turn on the product.



Note: If an error code appears, turn off the product and check that no protective material has been left inside the product.



414150500

EPSON®
EXCEED YOUR VISION

- 3** Select your language, country, and time on the LCD screen.

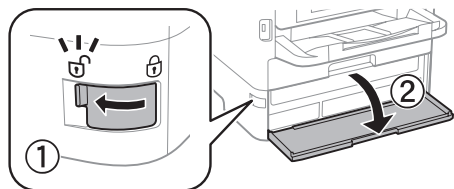
Note: You can change these settings later using the product's control panel. For more information, see the online *User's Guide*.

3 Install ink supply units (ink packs)

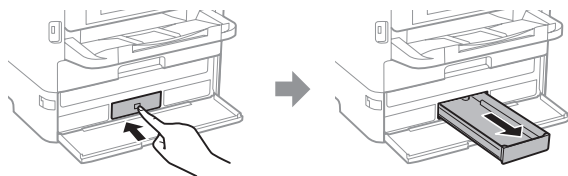
Note: The included initial ink packs are designed for reliable printer setup and cannot be used as replacement ink packs or resold. After setup, the remaining ink is available for printing.

Caution: Keep the ink packs out of the reach of children and do not drink the ink.

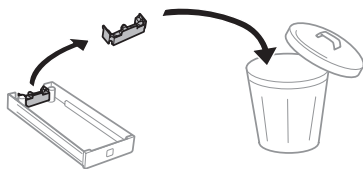
- 1** Unlock and open the ink pack tray cover.



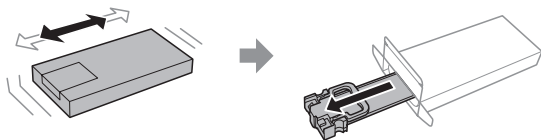
- 2** Press an ink pack tray to release it, then pull the tray out.



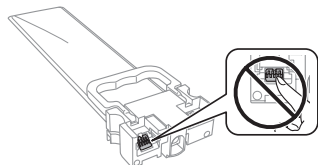
- 3** Remove and discard the protective piece from the ink pack tray.



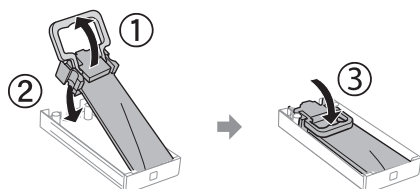
- 4** Shake an ink pack 10 times, then remove it from the packaging.



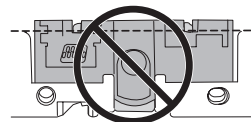
Note: Do not touch the green chip on the ink pack.



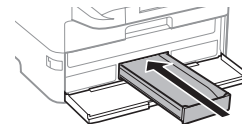
- 5** Move the handle forward, place the ink pack into the ink pack tray, then move the handle back to its original position.



Note: Make sure the ink pack is fully inserted and level with the top of the ink pack tray.

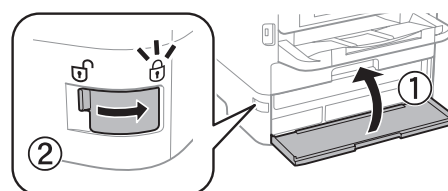


- 6** Insert the ink pack tray into the printer. Repeat steps 2 to 6 for the other ink packs.



Note: The ink packs are keyed to fit into the correct color slot. If you cannot insert the ink pack tray all the way, do not force it. Make sure the ink pack color matches the color slot on the printer.

- 7** Close the ink pack tray cover and lock it.



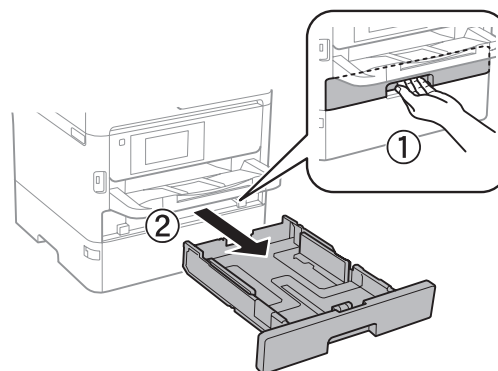
- 8** Select **OK** on the LCD screen to start charging the ink. Ink charging takes approximately 9 minutes. A message appears when ink charging is complete.

Caution: Do not unplug or turn off the product, raise the scanner unit, or open the front cover while the product is charging or you'll waste ink.

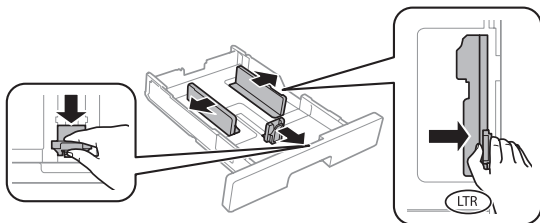
4 Load paper

See the online *User's Guide* for information about loading capacity, available paper types and sizes, loading envelopes, and using the rear paper feed slot or ADF.

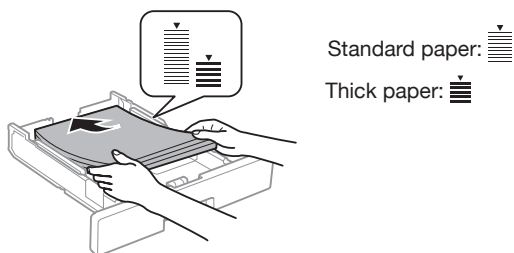
- 1** Make sure the product is done charging the ink, then pull out the paper cassette.



- 2** Slide the side edge guides all the way out and set the front edge guide to the paper size you are using.

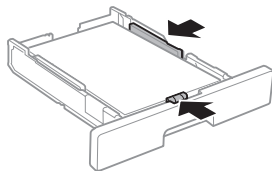


- 3** Insert paper with the glossy or printable side down.

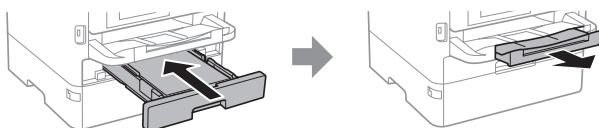


Note: Make sure the paper is under the arrow mark for your paper type and loaded against the front edge of the cassette.

- 4** Slide the edge guides against the paper, but not too tightly.



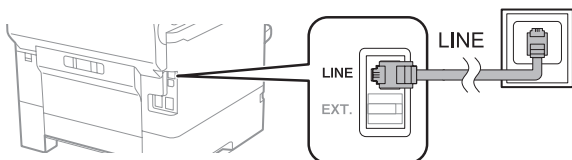
- 5** Keep the cassette flat as you insert it all the way, then pull out the output tray extension.



- 6** Select the paper settings on the product's control panel.

5 Connect the fax line

- 1** Connect a phone cord to a telephone wall jack and to the **LINE** port on your product. See the online *User's Guide* for more information.



- 2** If prompted, select **Proceed** on the LCD screen to set up the fax, or select **Close** to set it up later.

6 Install software

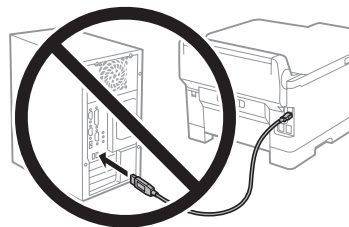
Note:

- An Internet connection is required to obtain the product software.
- To print from a Chromebook™, go to www.epson.com/support/chromebookprint (U.S.) or www.epson.ca/support/chromebookprint (Canada) for instructions.

Firmware Update Notice: The printer is designed to work only with genuine Epson branded ink packs. Other brands of ink packs and ink supplies are not compatible and, even if described as compatible, may not function properly or at all. Epson periodically provides firmware updates to address issues of security, performance, minor bug fixes and ensure the printer functions as designed. These updates may affect the functionality of third-party ink. Non-Epson branded or altered Epson packs that functioned prior to a firmware update may not continue to function.

Standard software package

- 1** Make sure the product is **NOT CONNECTED** to your computer.



Windows®: If you see a Found New Hardware screen, click **Cancel** and disconnect the USB cable.

- 2** Download and run your product's software package:

www.epson.com/support/wfc579r (U.S.)
www.epson.ca/support/wfc579r (Canada)

- 3** Follow the instructions on the computer screen to run the setup program.

- 4** When you see the Select Your Connection screen, select one of the following and follow the on-screen instructions:

- **Wireless connection**

In most cases, the software installer automatically attempts to set up your wireless connection. If setup is unsuccessful, you may need to enter your network name (SSID) and password.

- **Direct USB connection**

Make sure you have a USB cable (not included).

- **Wired network connection**

Make sure you have an Ethernet cable (not included).

PCL or PostScript driver

Download the software and see your online *User's Guide* for instructions.

www.epson.com/support/wfc579r (U.S.)
www.epson.ca/support/wfc579r (Canada)

Mobile printing

- Print directly from a smartphone or tablet using iOS or Android™ with Epson iPrint™. Simply connect your printer and device to the same network and tap the action icon to select the print option.
- Print directly from your Android (v4.4 or later) device*. Simply connect your printer and device to the same network and tap the menu icon to select the print option.
- Print remotely with Epson Connect™. See your online *User's Guide* for instructions or learn more at www.epson.com/connect (U.S.) or www.epson.ca/connect (Canada).

* May require the Epson Print Enabler or Mopria Print Service app from Google Play™.

Any problems?

Network setup was unsuccessful.

- Print a network connection report to identify network problems and solutions. See your online *User's Guide* for instructions.
- Make sure you select the right network name (SSID).
- Restart your router (turn it off and then on), then try to connect to it again.
- The printer can only connect to a network that supports 2.4 GHz connections. If your router offers both 2.4 GHz and 5 GHz connections, make sure 2.4 GHz is enabled.
- If you see a firewall alert message, click **Unblock** or **Allow** to let setup continue.
- If your network has security enabled, make sure you enter your network password (WEP key or WPA passphrase) correctly. Be sure to enter your password in the correct case.

There are lines or incorrect colors in my printouts.

Run a nozzle check to see if there are any gaps in the printout. Then clean the print head, if necessary. See the online *User's Guide* for more information.

The product's screen is dark.

Make sure your product is turned on, and touch the screen or press any button to wake it from sleep mode.

Setup is unable to find my printer after connecting it with a USB cable.

Make sure your product is securely connected.

Any questions?

User's Guide

Windows: Click the icon on your desktop or Apps screen to access the online *User's Guide*.

Mac: Click the icon in **Applications/Epson Software/Guide** to access the online *User's Guide*.

If you don't have a User's Guide icon, go to the Epson website, as described in "Technical support."

Technical support

Visit www.epson.com/support/wfc579r (U.S.) or www.epson.ca/support/wfc579r (Canada) to download drivers, view manuals, get FAQs, or contact Epson.

Call (866) 212-8743, 6 AM to 6 PM, Pacific Time, Monday through Friday. Days and hours of support are subject to change without notice. Toll or long distance charges may apply.

Recycling

Epson offers a recycling program for end-of-life hardware and ink packs. Please go to www.epson.com/recycle (U.S.) or www.epson.ca/recycle (Canada) for information on how to return your products for proper disposal.

Need paper and ink?

Ensure brilliant results with Epson specialty and plain papers, engineered specifically for Epson printers. Find Epson papers and Epson Genuine Ink at www.epson.com (U.S. sales) or www.epson.ca (Canadian sales) and at Epson authorized resellers. Call 800-GO-EPSON (800-463-7766).



DESIGNED *for*
EXCELLENCE™

Epson printers, ink and specialty papers.

WF-C579R replacement ink packs

Color	Standard-capacity	High-capacity
Black	T01C120	T01D120
Cyan	T01C220	T01D220
Magenta	T01C320	T01D320
Yellow	T01C420	T01D420

DURABrite™
Ultra
INK



EPSON and DURABrite are registered trademarks, EPSON Exceed Your Vision is a registered logomark, and Epson Connect and Epson iPrint are trademarks of Seiko Epson Corporation.

Designed for Excellence is a trademark of Epson America, Inc.

Windows is a registered trademark of Microsoft Corporation in the United States and/or other countries.

Mac is a trademark of Apple Inc., registered in the U.S. and other countries.

Android, Chromebook, and Google Play are trademarks of Google LLC.

General Notice: Other product names used herein are for identification purposes only and may be trademarks of their respective owners. Epson disclaims any and all rights in those marks.

This information is subject to change without notice.