

---

# Setting Up the airportdb Database

## Table of Contents

1 Preface and Legal Notices .....	1
2 Introduction .....	3
3 airportdb Structure .....	3
4 Installation .....	5
5 Loading airportdb into HeatWave .....	7
6 License for the airportdb Database .....	8

This document describes [airportdb](#) sample database installation, structure, and usage.

The [airportdb](#) sample database is adapted from the [Flughafen DB](#) developed by Stefan Proell, Eva Zangerle, Wolfgang Gassler.

For legal information, see the [Legal Notices](#).

For help with using MySQL, please visit the [MySQL Forums](#), where you can discuss your issues with other MySQL users.

Document generated on: 2024-09-19 (revision: 93)

## 1 Preface and Legal Notices

This document describes [airportdb](#) sample database installation, structure, and usage.

### Legal Notices

Copyright © 2016, 2024, Oracle and/or its affiliates.

#### License Restrictions

This software and related documentation are provided under a license agreement containing restrictions on use and disclosure and are protected by intellectual property laws. Except as expressly permitted in your license agreement or allowed by law, you may not use, copy, reproduce, translate, broadcast, modify, license, transmit, distribute, exhibit, perform, publish, or display any part, in any form, or by any means. Reverse engineering, disassembly, or decompilation of this software, unless required by law for interoperability, is prohibited.

#### Warranty Disclaimer

The information contained herein is subject to change without notice and is not warranted to be error-free. If you find any errors, please report them to us in writing.

#### Restricted Rights Notice

If this is software, software documentation, data (as defined in the Federal Acquisition Regulation), or related documentation that is delivered to the U.S. Government or anyone licensing it on behalf of the U.S. Government, then the following notice is applicable:

U.S. GOVERNMENT END USERS: Oracle programs (including any operating system, integrated software, any programs embedded, installed, or activated on delivered hardware, and modifications of such programs) and Oracle computer documentation or other Oracle data delivered to or accessed by U.S. Government end users are "commercial computer software," "commercial computer software documentation," or "limited rights data" pursuant to the applicable Federal Acquisition Regulation and agency-specific supplemental regulations. As such, the use, reproduction, duplication, release, display, disclosure, modification, preparation of derivative works, and/or adaptation of i) Oracle programs (including any operating system, integrated software, any programs embedded, installed, or activated on delivered hardware, and modifications of such programs), ii) Oracle computer documentation and/or iii) other Oracle data, is subject to the rights and limitations specified in the license contained in the applicable contract. The terms governing the U.S. Government's use of Oracle cloud services are defined by the applicable contract for such services. No other rights are granted to the U.S. Government.

### **Hazardous Applications Notice**

This software or hardware is developed for general use in a variety of information management applications. It is not developed or intended for use in any inherently dangerous applications, including applications that may create a risk of personal injury. If you use this software or hardware in dangerous applications, then you shall be responsible to take all appropriate fail-safe, backup, redundancy, and other measures to ensure its safe use. Oracle Corporation and its affiliates disclaim any liability for any damages caused by use of this software or hardware in dangerous applications.

### **Trademark Notice**

Oracle, Java, MySQL, and NetSuite are registered trademarks of Oracle and/or its affiliates. Other names may be trademarks of their respective owners.

Intel and Intel Inside are trademarks or registered trademarks of Intel Corporation. All SPARC trademarks are used under license and are trademarks or registered trademarks of SPARC International, Inc. AMD, Epyc, and the AMD logo are trademarks or registered trademarks of Advanced Micro Devices. UNIX is a registered trademark of The Open Group.

### **Third-Party Content, Products, and Services Disclaimer**

This software or hardware and documentation may provide access to or information about content, products, and services from third parties. Oracle Corporation and its affiliates are not responsible for and expressly disclaim all warranties of any kind with respect to third-party content, products, and services unless otherwise set forth in an applicable agreement between you and Oracle. Oracle Corporation and its affiliates will not be responsible for any loss, costs, or damages incurred due to your access to or use of third-party content, products, or services, except as set forth in an applicable agreement between you and Oracle.

### **Use of This Documentation**

This documentation is NOT distributed under a GPL license. Use of this documentation is subject to the following terms:

You may create a printed copy of this documentation solely for your own personal use. Conversion to other formats is allowed as long as the actual content is not altered or edited in any way. You shall not publish or distribute this documentation in any form or on any media, except if you distribute the documentation in a manner similar to how Oracle disseminates it (that is, electronically for download on a Web site with the software) or on a CD-ROM or similar medium, provided however that the documentation is disseminated together with the software on the same medium. Any other use, such as any dissemination of printed copies or use of this documentation, in whole or in part, in another publication, requires the prior written

consent from an authorized representative of Oracle. Oracle and/or its affiliates reserve any and all rights to this documentation not expressly granted above.

## Access to Oracle Support for Accessibility

Oracle customers that have purchased support have access to electronic support through My Oracle Support. For information, visit <http://www.oracle.com/pls/topic/lookup?ctx=acc&id=info> or visit <http://www.oracle.com/pls/topic/lookup?ctx=acc&id=trs> if you are hearing impaired.

## 2 Introduction

The `airportdb` database is a large data set intended for use with MySQL HeatWave on Oracle Cloud Infrastructure (OCI) and AWS. The database is approximately 2GB in size and consists of 14 tables containing a total of 55,983,205 records.

**Table 1** airportdb Tables

Table Name	Rows
<code>booking</code>	50831531
<code>flight</code>	416429
<code>flight_log</code>	0
<code>airport</code>	9939
<code>airport_reachable</code>	0
<code>airport_geo</code>	9854
<code>airline</code>	113
<code>flightschedule</code>	9851
<code>airplane</code>	5583
<code>airplane_type</code>	342
<code>employee</code>	1000
<code>passenger</code>	36346
<code>passengerdetails</code>	37785
<code>weatherdata</code>	4626432

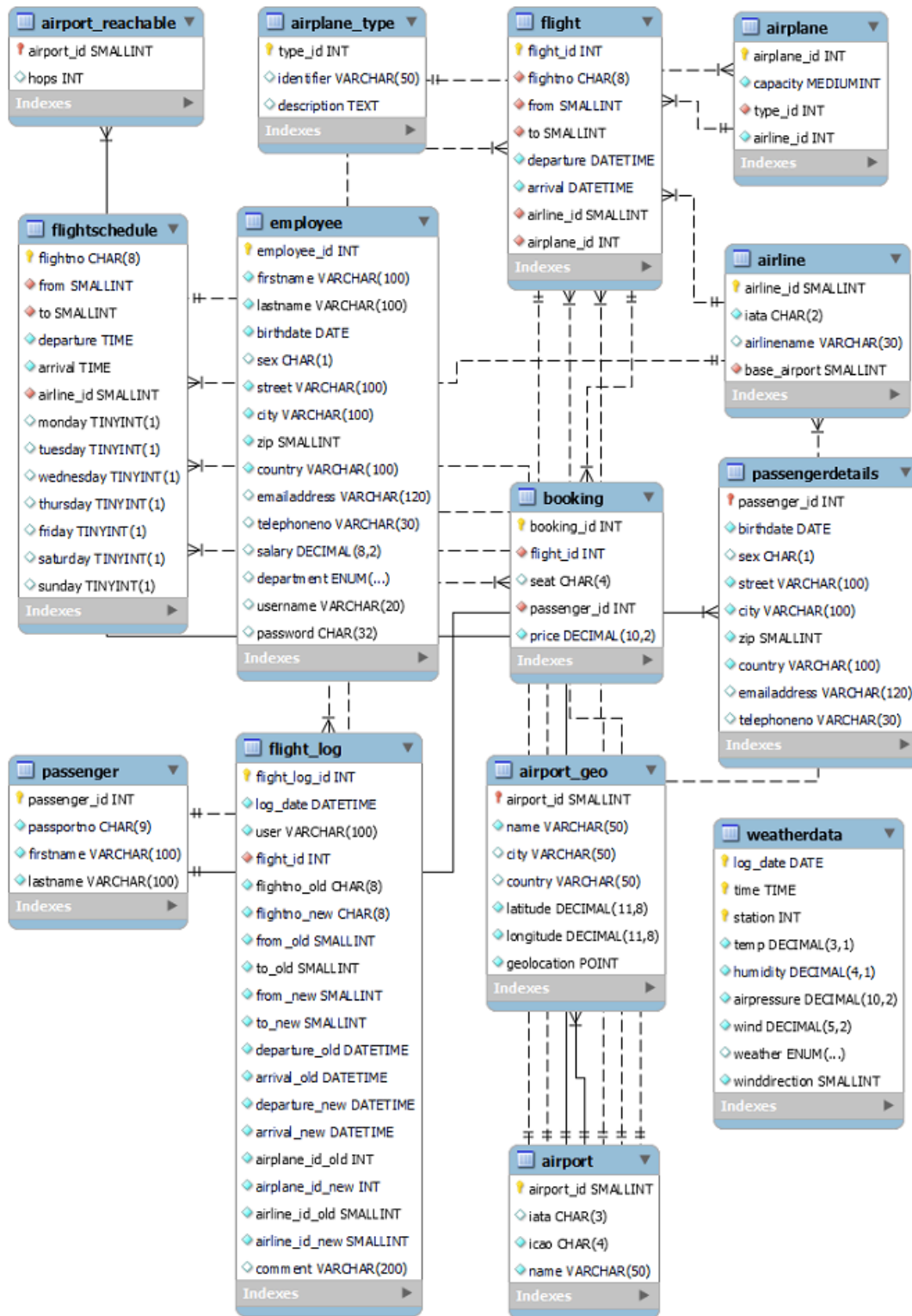
The `airportdb` data files were produced using the [MySQL Shell Schema Dump Utility](#).

Data files produced by the MySQL Shell Schema Dump Utility include DDL files for creating the schema structure, compressed `.tsv` files that contain the data, and `.json` metadata files.

## 3 airportdb Structure

The following diagram provides an overview of the `airportdb` database structure.

Figure 1 airportdb Schema



## 4 Installation

The following instructions describe how to install the `airportdb` database on a MySQL DB System.

On AWS, use the **Import sample data** feature in MySQL HeatWave Console to import `airportdb` into a DB System. See [Importing Sample Database](#) for details.

On Oracle Cloud Infrastructure (OCI), two methods are provided for installing `airportdb`:

- [Installing airportdb on OCI from Object Storage](#)
- [Installing airportdb on OCI from a Compute Instance](#)

The Object Storage method requires uploading the `airportdb` data files to an Object Storage bucket from where they are loaded into the MySQL DB System. The Compute instance method does not involve an Object Storage bucket; data files are downloaded to the Compute instance, from where they are loaded into the MySQL DB System.

### Warning

The `airportdb` sample database can be installed on an on-premise MySQL Server instance, but due to the volume of data, it is only advisable to do so if your system has sufficient disk space and is capable of supporting large load operations consisting of millions of rows of data.

### Installing airportdb on OCI from Object Storage

The installation procedure involves downloading the `airportdb` sample database, uploading the data files to an Object Storage bucket, and importing the data from the Object Storage bucket into the MySQL DB System using the [MySQL Shell Dump Loading utility](#).

Before you begin, ensure that you have the following:

- The MySQL DB System's Endpoint (its private IP address), and a MySQL DB System administration user name and password. For information about retrieving the MySQL DB System Endpoint, see [MySQL DB System Details](#).
- The public IP address of the Compute instance used to connect to the MySQL DB System. For information about the Compute Service, see [Overview of the Compute Service](#).
- MySQL Shell 8.0.22 or higher installed on the Compute instance. For installation instructions, see [Connecting to the MySQL DB System with SSH and MySQL Shell](#).
- A valid OCI CLI configuration file. See [SDK and CLI Configuration File](#). If you have not installed and configured the OCI CLI, you must either install it or create a configuration file manually.
- Access to Object Storage and an existing bucket. For information about Object Storage, see [Object Storage Overview](#).
- The Object Storage bucket name and namespace. For information about namespaces, see [Understanding Object Storage Namespaces](#).

To install the `airportdb` sample database:

1. Download the `airportdb` database to a temporary location such as `/tmp/` or `C:\temp\` and unpack it. The `airportdb` sample database is provided for download as a compressed `tar` or Zip archive. The download is approximately 640 MBs in size.

```
wget https://downloads.mysql.com/docs/airport-db.tar.gz
```

```
tar xvzf airport-db.tar.gz
```

or

```
wget https://downloads.mysql.com/docs/airport-db.zip
unzip airport-db.zip
```

Unpacking the compressed `tar` or Zip archive results in a single directory named `airport-db`, which contains the data files.

2. Log in to your Oracle Cloud Infrastructure (OCI) account and upload the `airportdb` data files from the `airport-db` directory to an Object Storage bucket. For information about loading data into an Object Storage bucket, see [Putting Data into Object Storage](#).
3. SSH to the Compute instance using the `opc` user and the public IP address of the compute instance. For additional information about connecting to a Compute instance, see [Connecting to an Instance](#).

```
ssh opc@computeInstancePublicIP
```

4. Start MySQL Shell and connect to the MySQL DB System Endpoint. For additional information about connecting to a DB System, see [Connecting to the MySQL DB System with SSH and MySQL Shell](#).

```
mysqlsh Username@IPAddressOfMySQLDBSystemEndpoint
```

5. Load the `airportdb` data files into the MySQL DB System using the [MySQL Shell Dump Loading utility](#). The bucket name and namespace are required.

```
MySQL>JS> util.loadDump("airportdb", {threads: 16, deferTableIndexes: "all",
  osBucketName: "bucket-name", osNamespace: "name_space",
  ignoreVersion: true})
```

### Note

The `deferTableIndexes: "all"` option defers creating secondary indexes until after the table data is loaded, which significantly reduces load times. If you intend to use `airportdb` with HeatWave, which does not use secondary indexes, you can avoid creating secondary indexes by specifying the `loadIndexes: "false"` option instead of `deferTableIndexes: "all"`. For more information about MySQL Dump Load options, see [MySQL Shell Dump Loading utility](#).

After the data is imported into the MySQL DB System, you can load the tables into HeatWave. For instructions, see [Section 5, "Loading airportdb into HeatWave"](#).

## Installing airportdb on OCI from a Compute Instance

The installation procedure involves downloading the `airportdb` database to a Compute instance and importing the data from the Compute instance into the MySQL DB System using the [MySQL Shell Dump Loading utility](#).

Before you begin, ensure that you have the following:

- The MySQL DB System's Endpoint (its private IP address), and a MySQL DB System administration user name and password. For information about retrieving the MySQL DB System Endpoint, see [MySQL DB System Details](#).
- The public IP address of the Compute instance used to connect to the MySQL DB System. For information about the Compute Service, see [Overview of the Compute Service](#).

- MySQL Shell 8.0.22 or higher installed on the Compute instance. For installation instructions, see [Connecting to the MySQL DB System with SSH and MySQL Shell](#).
- A valid OCI CLI configuration file. See [SDK and CLI Configuration File](#). If you have not installed and configured the OCI CLI, you must either install it or create a configuration file manually.

To install the `airportdb` database:

1. SSH to the Compute instance using the `opc` user and the public IP address of the compute instance. For additional information about connecting to a Compute instance, see [Connecting to an Instance](#).

```
ssh opc@computeInstancePublicIP
```

2. Download the `airportdb` sample database and unpack it. The `airportdb` sample database is provided for download as a compressed `tar` or Zip archive. The download is approximately 640 MBs in size.

```
wget https://downloads.mysql.com/docs/airport-db.tar.gz
tar xvzf airport-db.tar.gz
```

or

```
wget https://downloads.mysql.com/docs/airport-db.zip
unzip airport-db.zip
```

Unpacking the compressed `tar` or Zip archive results in a single directory named `airport-db`, which contains the data files.

3. Start MySQL Shell and connect to the MySQL DB System Endpoint. For additional information about connecting to a DB System, see [Connecting to the MySQL DB System with SSH and MySQL Shell](#).

```
mysqlsh Username@IPAddressOfMySQLDBSystemEndpoint
```

4. Load the `airportdb` database into the MySQL DB System using the [MySQL Shell Dump Loading utility](#).

```
MySQL>JS> util.loadDump("airport-db", {threads: 16, deferTableIndexes: "all",
  ignoreVersion: true})
```

### Note

The `deferTableIndexes: "all"` option defers creating secondary indexes until after the table data is loaded, which significantly reduces load times. If you intend to use `airportdb` with HeatWave, which does not use secondary indexes, you can avoid creating secondary indexes by specifying the `loadIndexes: "false"` option instead of `deferTableIndexes: "all"`. For more information about MySQL Dump Load options, see [MySQL Shell Dump Loading utility](#).

After the data is imported into the MySQL DB System, you can load the tables into HeatWave. For instructions, see [Section 5, "Loading airportdb into HeatWave"](#).

## 5 Loading airportdb into HeatWave

See [Manage Data in HeatWave with Workspaces](#) for how to load the `airportdb` database from a MySQL DB System into HeatWave on AWS.

The following procedure describes how to load the `airportdb` database from a MySQL DB System into HeatWave on OCI.

Before you begin:

- The `airportdb` database must be loaded in the MySQL DB System. If you have not done so, see [Section 4, “Installation”](#).
- A HeatWave Cluster must be enabled for use with your MySQL DB System. For information about adding a HeatWave Cluster to a DB System, see [Adding a HeatWave Cluster to a DB System](#).

To load the `airportdb` into HeatWave:

1. SSH to the Compute instance from your local machine using the `opc` user and the public IP address of the compute instance. For additional information about connecting to a Compute instance, see [Connecting to an Instance](#).

```
ssh opc@computeInstancePublicIP
```

2. Start MySQL Shell and connect to the MySQL DB System's Endpoint (its private IP address). For additional information about connecting to a DB System, see [Connecting to the MySQL DB System with SSH and MySQL Shell](#).

```
mysqlsh Username@IPAddressOfMySQLDBSystemEndpoint
```

#### Note

Alternatively, you can connect to the DB System using a MySQL Client:

```
mysql --host IPAddressOfMySQLDBSystemEndpoint -u Username -p
```

3. Change the MySQL Shell execution mode to SQL and run the following Auto Parallel Load command to load the `airportdb` tables into HeatWave.

```
MySQL>JS> \sql
MySQL>SQL> CALL sys.heatwave_load(JSON_ARRAY('airportdb'), NULL);
```

Tables can be unloaded from HeatWave using the following statements:

```
USE airportdb;

ALTER TABLE booking SECONDARY_UNLOAD;
ALTER TABLE flight SECONDARY_UNLOAD;
ALTER TABLE flight_log SECONDARY_UNLOAD;
ALTER TABLE airport SECONDARY_UNLOAD;
ALTER TABLE airport_reachable SECONDARY_UNLOAD;
ALTER TABLE airport_geo SECONDARY_UNLOAD;
ALTER TABLE airline SECONDARY_UNLOAD;
ALTER TABLE flightschedule SECONDARY_UNLOAD;
ALTER TABLE airplane SECONDARY_UNLOAD;
ALTER TABLE airplane_type SECONDARY_UNLOAD;
ALTER TABLE employee SECONDARY_UNLOAD;
ALTER TABLE passenger SECONDARY_UNLOAD;
ALTER TABLE passengerdetails SECONDARY_UNLOAD;
ALTER TABLE weatherdata SECONDARY_UNLOAD;
```

## 6 License for the airportdb Database

This work is adapted from the Flughafen DB by Stefan Proell, Eva Zangerle, Wolfgang Gassler, which is licensed under the Creative Commons Attribution 4.0 International (CC BY 4.0) License. To view a copy of this license, visit <https://creativecommons.org/licenses/by/4.0/> or send a letter to Creative Commons PO Box 1866, Mountain View, CA 94042.

FlughafenDB. (2015). Stefan Proell, Eva Zangerle, Wolfgang Gassler. [www.flughafendb.cc](http://www.flughafendb.cc). <https://doi.org/10.5281/zenodo.3968361>



Please contact <http://www.mysql.com/about/contact/> for more information.

