



Government of the District of Columbia
Department of Behavioral Health (DBH)



PRISM

Performance Related Information for Staff and Managers



MAY 2015

Office of Statistics and Reporting (OSR), 06/15/15

Table of Contents

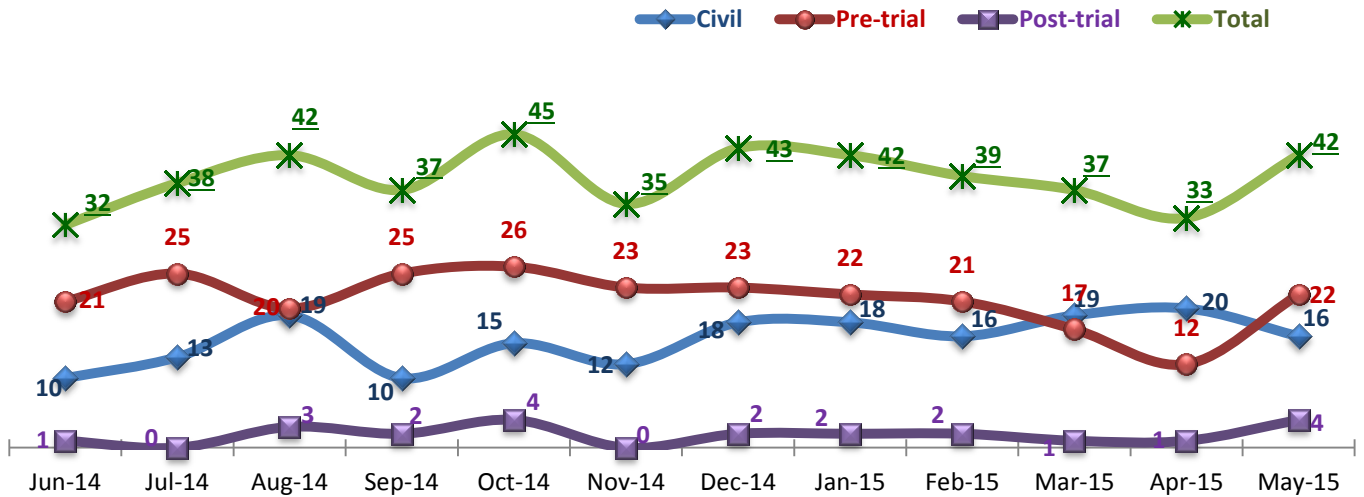
1. Admissions to SEH	1
2. Discharges from SEH	1
3. Average Daily Census.....	2
4. Transfers.....	2
5. 30-Day Readmission Rate	2
6. Unusual Incidents	3
7. Patient-Involved Unusual Incidents	3
8. Admissions vs. Patient UI Rate	4
9. Unusual Incidents by Severity.....	4
10. Selected Types of Incidents	4
11. Physical Assaults by Severity	5
12. Patient Injuries	5
13. Staff Injuries	5
14. Percent of Patients Restrained or Secluded	6
15. Restraint Hours Rate & Seclusion Hours Rate	6
16. Elopements.....	6
17. Reported Medication Variance Events.....	7
18. Reported Adverse Drug Reactions	7
19. Percent of Missing Documentation on Med-Administration.....	8
20. Medication Refusal Rate*.....	8
21. Number of STAT Events and Individuals Involved	8
22. Percentage of SiteFM Work Orders Completed within 3 Days	9
23. Demographics and Length of Stay.....	10

- Appendix 1) Table – Census, Admissions & Discharges
- Appendix 2) Table – Key Performance Indicators
- Appendix 3) Table – Unusual Incident & Medication
- Appendix 4) Table – Restraint & Seclusion
- Appendix 5) Table – Demographic Information of Individuals in Care
- Appendix 6) Table – Unusual Incidents by Unit

Key Trends: Admission, Discharge, Transfer, Census, and Readmissions (1~6)

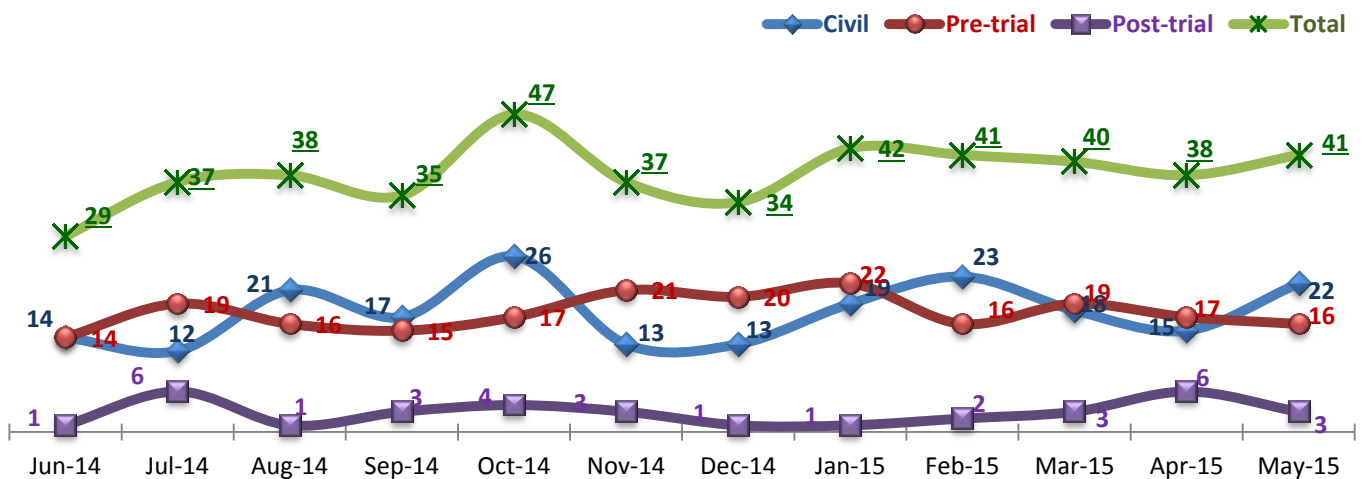
- In May 2015, the number of admissions (42), particularly pre-trial admissions (22), increased significantly after a gradual decline for the previous three months. However, as the number of discharges (41) exceeded the number of admissions, the average daily census (ADC) declined marginally from 274 in April to 272 in May.
- The 30-day readmission rate for April discharges increased, further raising the 30-day readmission rate for FY15 to 7.9%, which is much higher than the rate in FY14 (2.3%) and above the national average (NPR 6.9%)¹. A majority of 30-day readmissions (64% of 22) to date in FY15 were those discharged with a civil legal status. This is in contrast to FY14, when only 30% of readmissions were from *Civil* discharges.

1. Admissions to SEH



* Number of admissions to SEH inpatient program, including transfers from forensic outpatient to inpatient program.

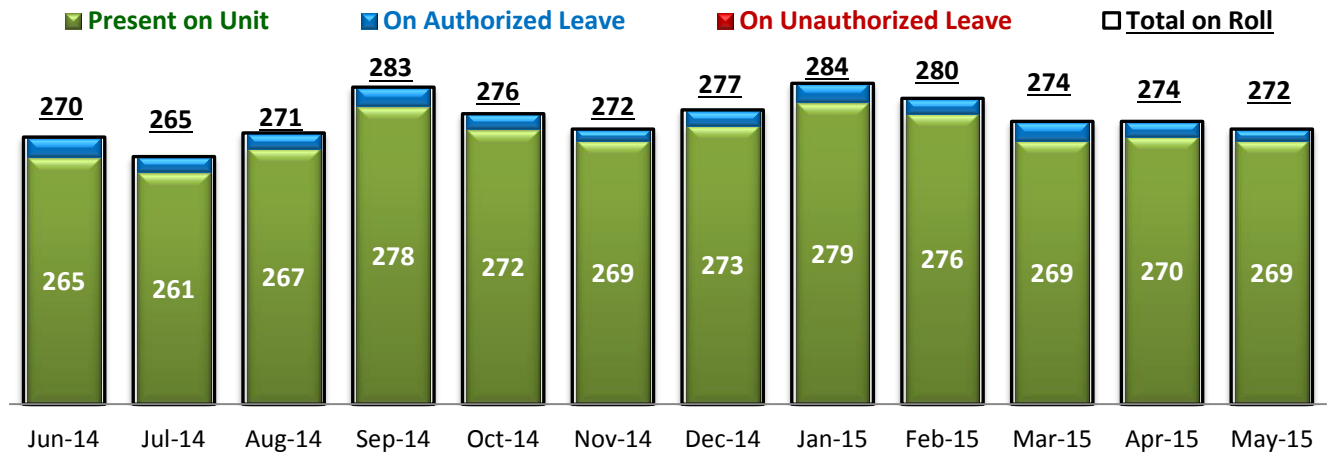
2. Discharges from SEH



* Number of discharges from SEH inpatient program, including transfers from inpatient to forensic outpatient program.

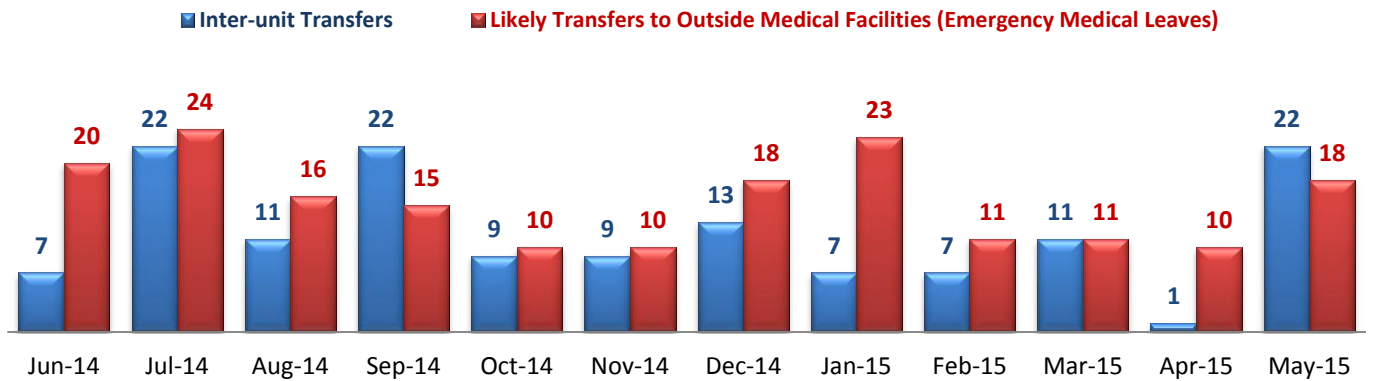
¹ NPR: National Public Rate as of June 2013 was published in November 2013 by National Association of State Mental Health Program Directors Research Institute (NRI), based on data collected from a number of state psychiatric hospitals nationwide.

3. Average Daily Census



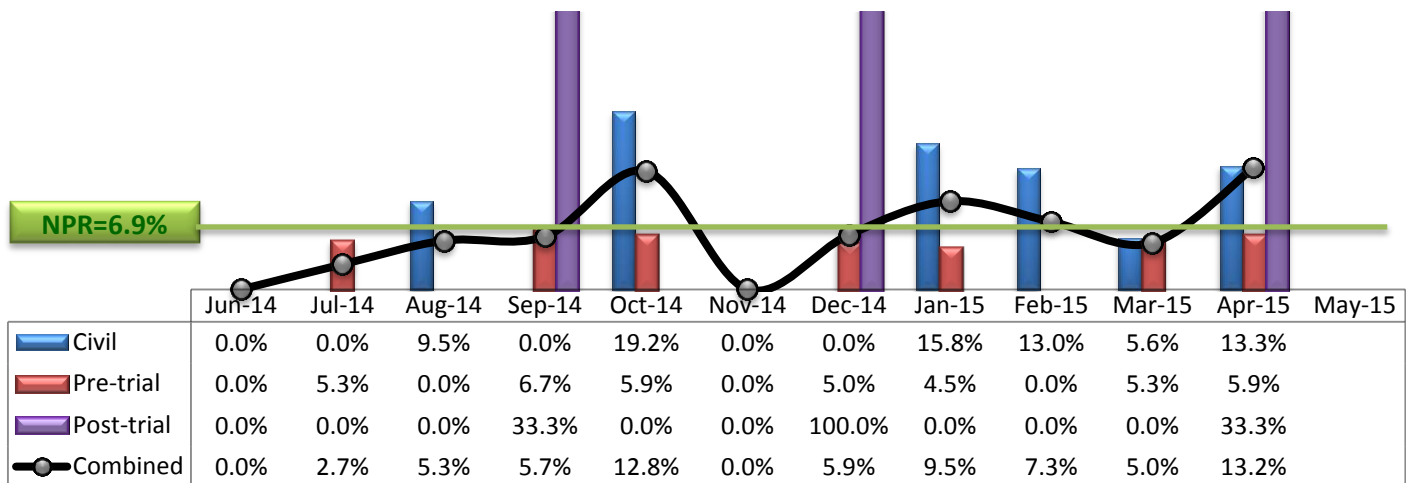
* Data above is the daily average number of individuals counted at 11:59 PM every day during each month.

4. Transfers



* Number of inter-unit transfers that occurred during month and number of emergency medical leaves that were initiated during month.

5. 30-Day Readmission Rate



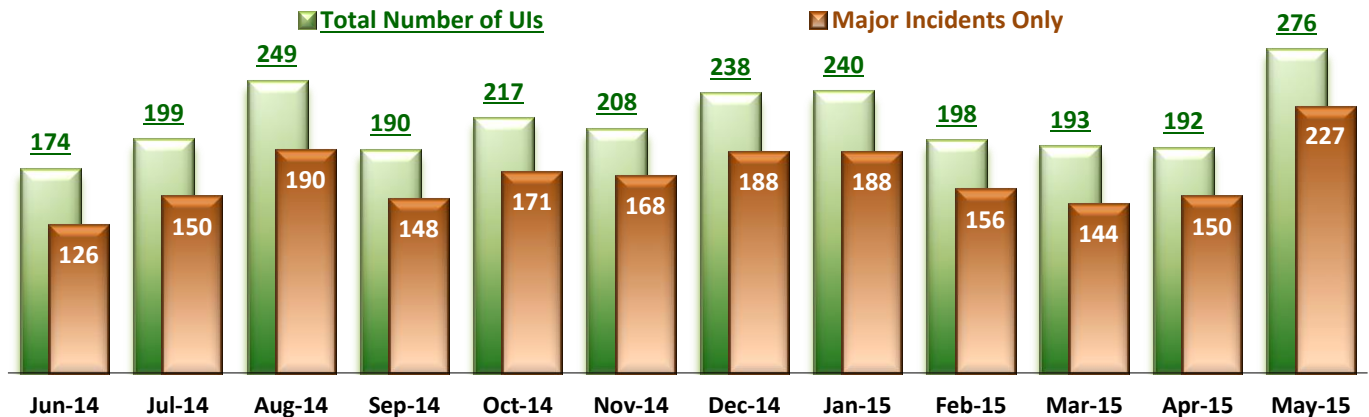
* Percent of discharges that returned to SEH within 30 days of discharges. It does not include those who may have been re-hospitalized at another psychiatric facility. This measure requires 30-day observation following discharge.

** The post-trial denominators (discharges) per month range only between one and six, making the monthly re-admission rate high when there is any. For example, in December 2014, there was only one post-trial discharge, which was readmitted within 30 days. Thus, the 30-day readmission rate for post-trial discharge for this month is 100%.

Key Trends: Unusual Incidents (6~16)

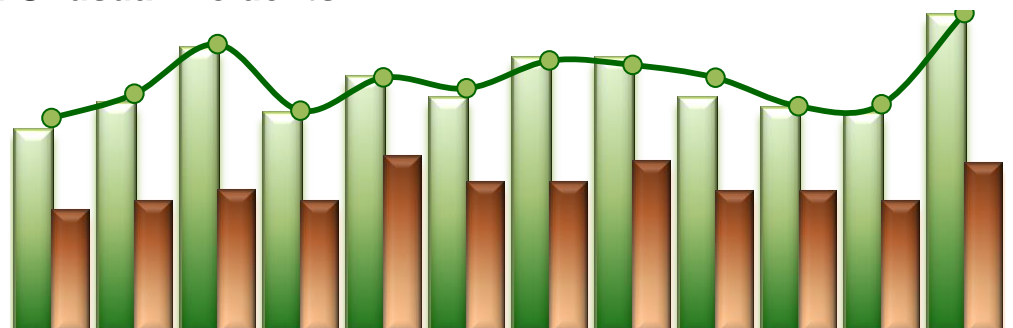
- The total number of unusual incidents (UIs) and the patient UI rate in May 2015 significantly increased, reflecting the substantial increase of admissions that occurred during the month: a total of 276 UIs, including 257 patient UIs or 31 per 1,000 patient days, were reported in May 2015 whereas a total of 192 UIs or 22 UIs per 1,000 patients days were reported in April.
- In May 2015, the number of incidents increased at all severity level. Particularly, the number of high severity incidents (70) reached its highest level since the PRISM had started reporting severity data first time in FY11. The number of UIs involving aggressive behaviors, physical assaults, and psychiatric emergencies considerably increased. Further analysis indicates that during May 2015, three (3) individuals participated in violence related incidents as aggressors for a total of 42 incidents (24% of UIs involving physical assaults or aggressive behaviors). Both patient injuries and staff injuries as well as fall incidents increased noticeably.
- Since the Hospital started tracking physical holds as restraint events as guided by the Joint Commission standard, the frequency of restraint events and the number of unique individuals restrained substantially increased. However, a physical hold is typically used briefly for involuntary administration of emergency medication or for intervention in a physical altercation. Thus, even though the number of restraint events and individuals restrained increased, the measure of the restraint hours rate has been hardly affected by this change and is still far below the NPR.
- There have been no elopements since July 2014 (for 10 months) through April 2015. In May 2015, there was one elopement incident.

6. Unusual Incidents



* A medication or vital sign refusal is no longer a UI since May 2014 and data above prior to May 2014 also excludes those incidents.

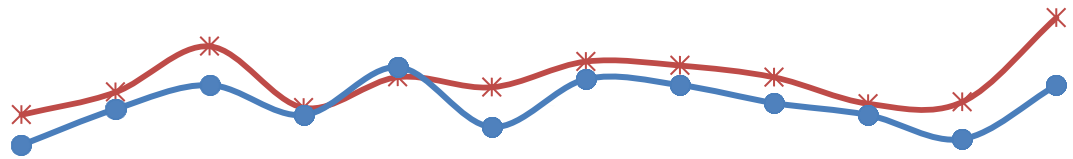
7. Patient-Involved Unusual Incidents



	Jun-14	Jul-14	Aug-14	Sep-14	Oct-14	Nov-14	Dec-14	Jan-15	Feb-15	Mar-15	Apr-15	May-15
# of Patient-Involved UIs	164	186	230	178	207	190	222	222	190	182	178	257
# of Unique Patients in UI	100	107	116	107	143	122	122	139	115	115	107	138
Patient UI Rate	20.7	23.0	27.8	21.4	24.6	23.5	26.2	25.8	24.6	21.8	22.0	30.8

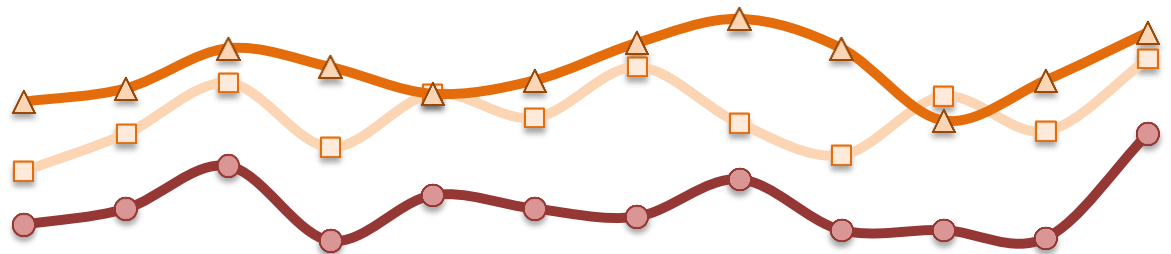
* The patient UI rate is the number of patient-involved unusual incidents reported for every 1000 inpatient days.

8. Admissions vs. Patient UI Rate



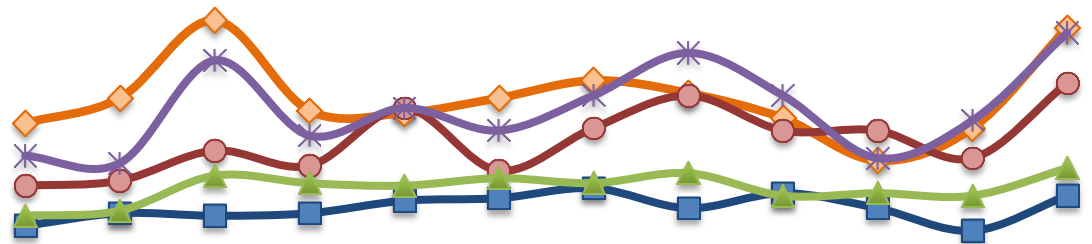
	Jun-14	Jul-14	Aug-14	Sep-14	Oct-14	Nov-14	Dec-14	Jan-15	Feb-15	Mar-15	Apr-15	May-15
—*— Patient UI Rate	20.7	23.0	27.8	21.4	24.6	23.5	26.2	25.8	24.6	21.8	22.0	30.8
—●— Admission	32	38	42	37	45	35	43	42	39	37	33	42

9. Unusual Incidents by Severity



	Jun-14	Jul-14	Aug-14	Sep-14	Oct-14	Nov-14	Dec-14	Jan-15	Feb-15	Mar-15	Apr-15	May-15
□ 1) Low	56	70	89	65	85	76	95	74	62	84	71	98
△ 2) Medium	82	87	102	95	85	90	104	113	102	75	90	108
● 3) High	36	42	58	30	47	42	39	53	34	34	31	70
◇ 4) Catstrp	0	0	0	0	0	0	0	0	0	0	0	0
Total UI	174	199	249	190	217	208	238	240	198	193	192	276

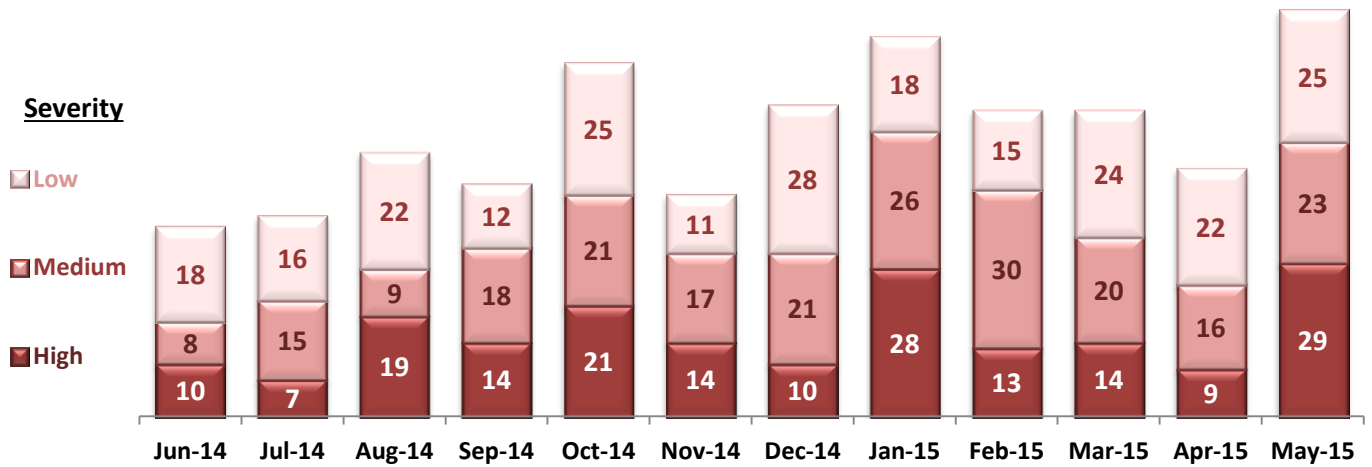
10. Selected Types of Incidents



	Jun-14	Jul-14	Aug-14	Sep-14	Oct-14	Nov-14	Dec-14	Jan-15	Feb-15	Mar-15	Apr-15	May-15
◇ Aggressive Behavior	61	71	102	66	65	71	78	73	63	46	59	99
● Physical Assault	36	38	50	44	67	42	59	72	58	58	47	77
* Pysch Emerg.	48	45	86	56	67	58	72	89	72	47	62	97
■ Fall	20	25	24	25	30	31	35	27	33	27	18	32
▲ Injury	24	26	40	37	36	39	37	41	32	33	32	43

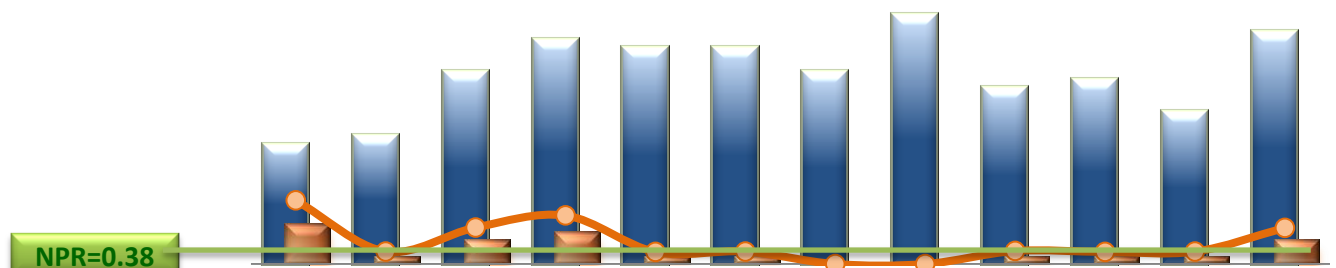
* These are incident types that are frequently reported. Some incidents may be counted in multiple categories. For example, a physical assault incident that accompanied psychiatric emergency and injury is counted under psychiatric emergency and injury as well as under physical assault. Injury is broadly defined to include any type of injuries regardless of the cause or severity level.

11. Physical Assaults by Severity



* Any physical assault that accompanies a code 13 or results in extensive injury needing off-unit treatment or transfer to ER is considered to be high severity, any physical assault that causes a minor injury that can be treated on unit is considered to be medium severity, and physical assault events that result in no injury are considered to be low severity.

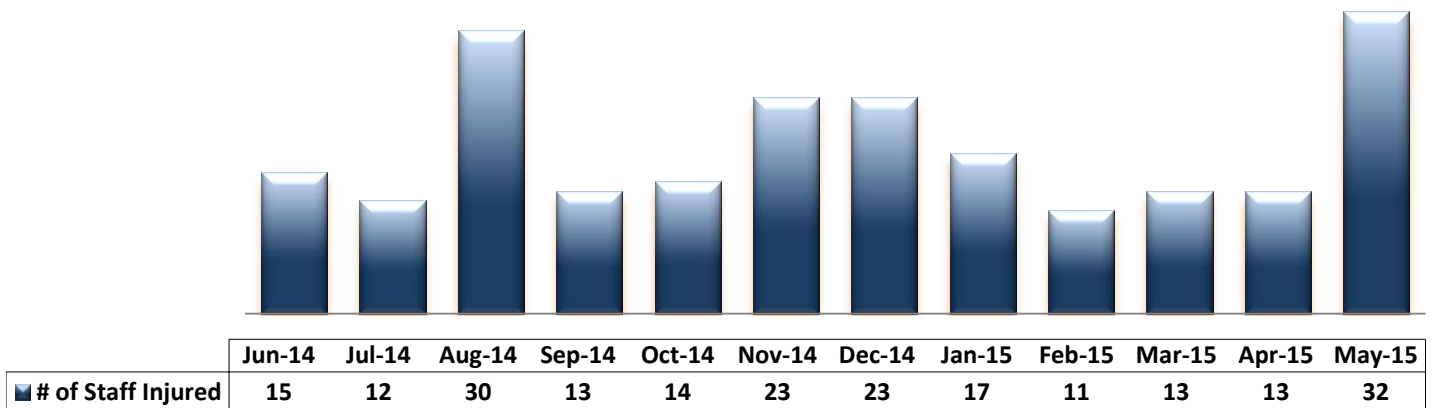
12. Patient Injuries



	Jun-14	Jul-14	Aug-14	Sep-14	Oct-14	Nov-14	Dec-14	Jan-15	Feb-15	Mar-15	Apr-15	May-15
Total Pts Injured	15	16	24	28	27	27	24	31	22	23	19	29
Major Pt Injuries*	5	1	3	4	1	1	0	0	1	1	1	3
Patient Injury Rate	0.63	0.12	0.36	0.48	0.12	0.12	0.00	0.00	0.13	0.12	0.12	0.36

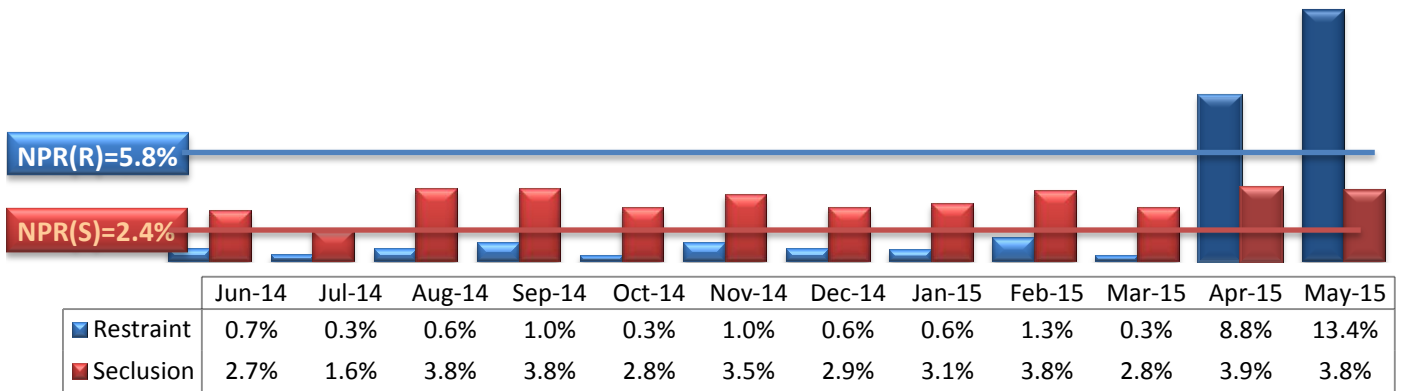
* Injury is broadly defined to include any type of injuries regardless of the cause or severity level. The total number of patients injured represents all of the reported injuries including minor injuries treated with first aid alone. However, the patient injury rate considers only the number of patient injuries that required beyond first-aid level treatment based on the NRI definition and the patient injury rate is the number of 'major' patient injuries per every 1000 inpatient days

13. Staff Injuries



* Injury is broadly defined to include any type of injuries regardless of the cause or severity level. The total number of staff injured represents all of the reported staff injuries including minor injuries treated with first aid alone.

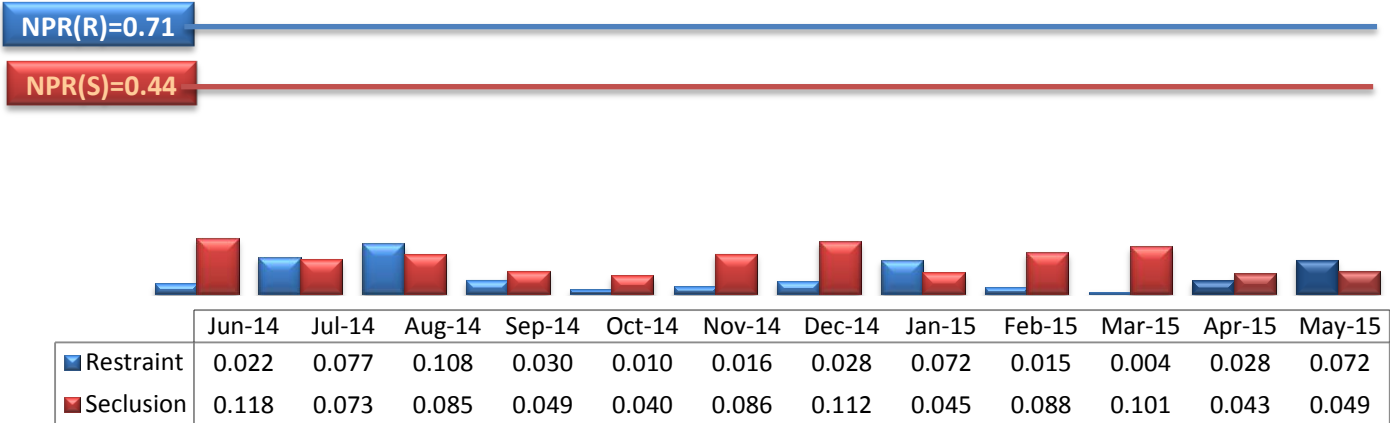
14. Percent of Patients Restrained or Secluded



* Percent of unique patients who were restrained at least once and percent of unique patients who were secluded at least once. The denominator includes all individuals who were served in care >=1 day during month.

** Data prior to April 2015, the Hospital tracked only mechanical restraint events, but the Hospital's restraint policy has changed to include any physical holds. The sudden increase of the restraint data as of April 2015 reflects this change.

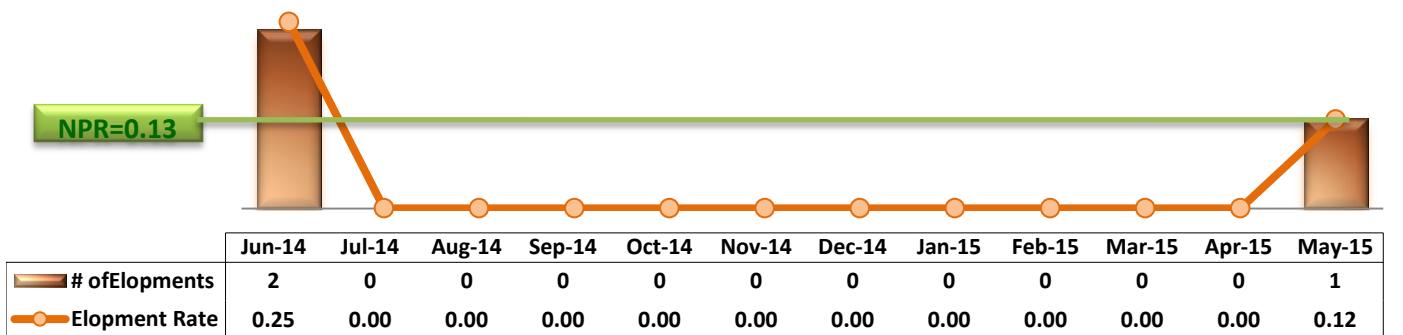
15. Restraint Hours Rate & Seclusion Hours Rate



* Restraint/Seclusion Hours Rate: Number of hours spent in restraint/seclusion for every 1000 inpatient hours.

** The duration of each physical hold event is counted as 1 minute as a physical hold is ordered and used only as a temporary intervention that lasts less than a minute to break up any physical conflicts or to administer emergency medications.

16. Elopements

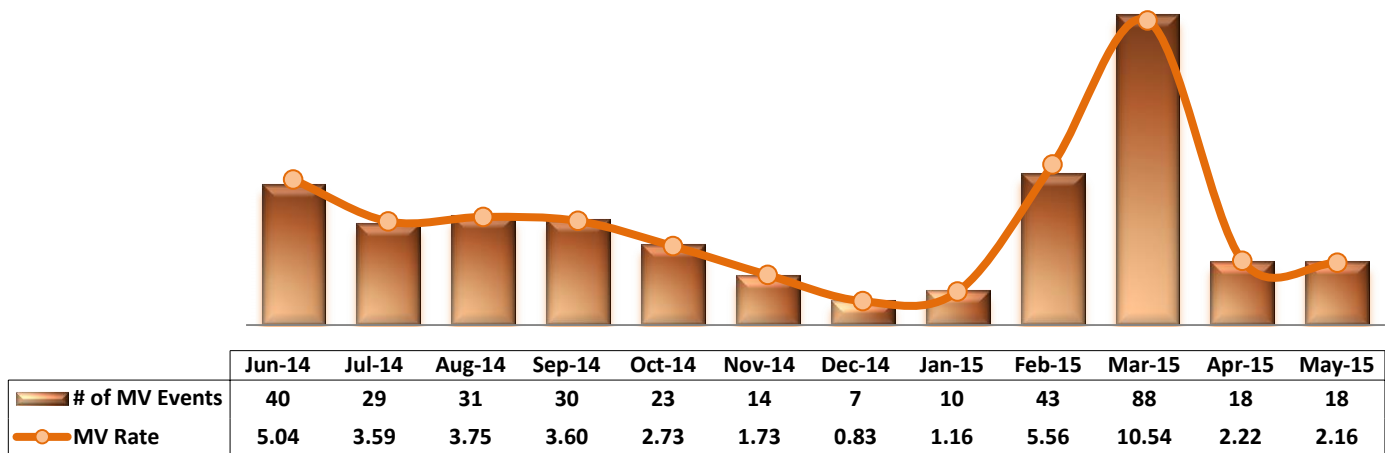


* It counts the total number of unauthorized leaves for any duration that were initiated during month and were recorded in Avatar. The elopement rate is the number of those unauthorized leaves that occurred for every 1000 inpatient days.

Key Trends: Medication Documentation, Medication Variance, ADR, and STAT (17~21)

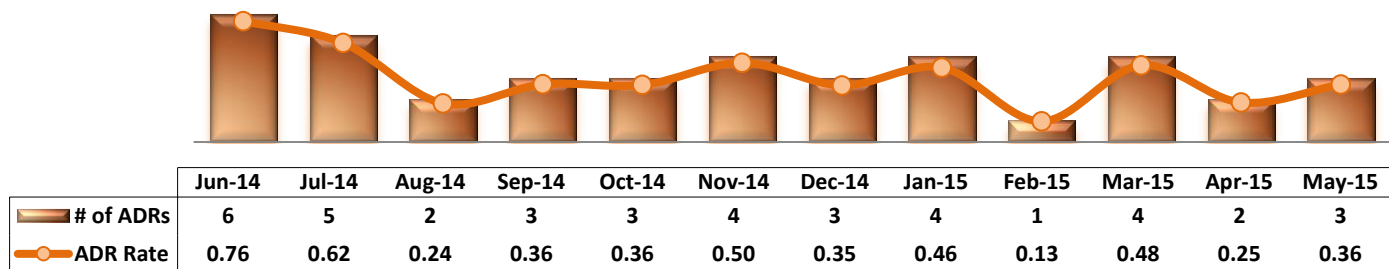
- The number of reported MVs remained at 18 for the last two consecutive months.
- The number of reported ADRs ranged between one and four since August 2014.
- The rate of missing documentation on medication administration slightly increased from 0.54% in April to 0.62% in May 2015.
- The medication refusal rate had been below 7% in March and April 2015, but it increased to 7.23% in May.
- As the number of violence related incidents, including psychiatric emergencies, increased significantly in May 2015, the number of STAT events (116) reached its highest level ever since PRISM had reported this data. The number of IICs involved in STAT events repeatedly also increased noticeably: there were a total of 15 unique individuals, each of whom had three (3) or more STAT events recorded in May.

17. Reported Medication Variance Events



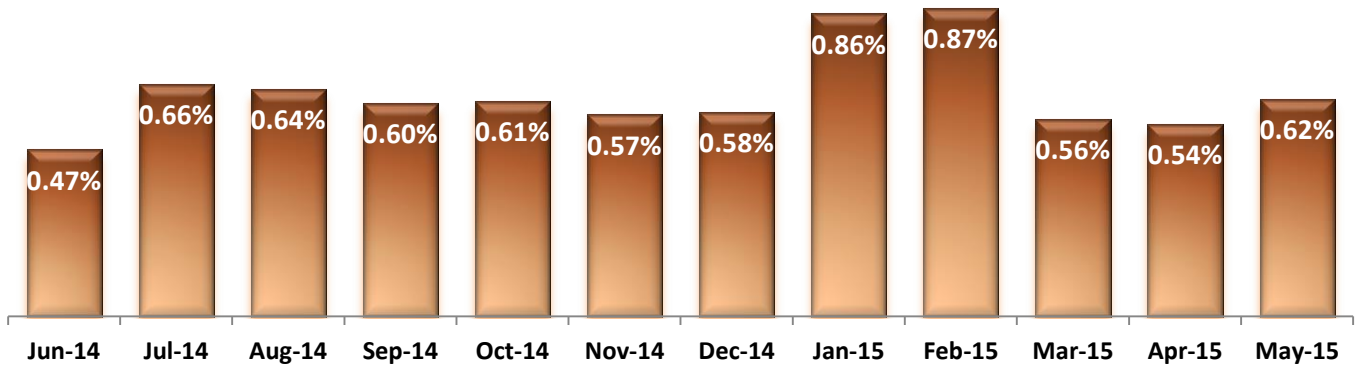
* MV Rate: Number of reported medication variance events that occurred for every 1000 inpatient days.

18. Reported Adverse Drug Reactions

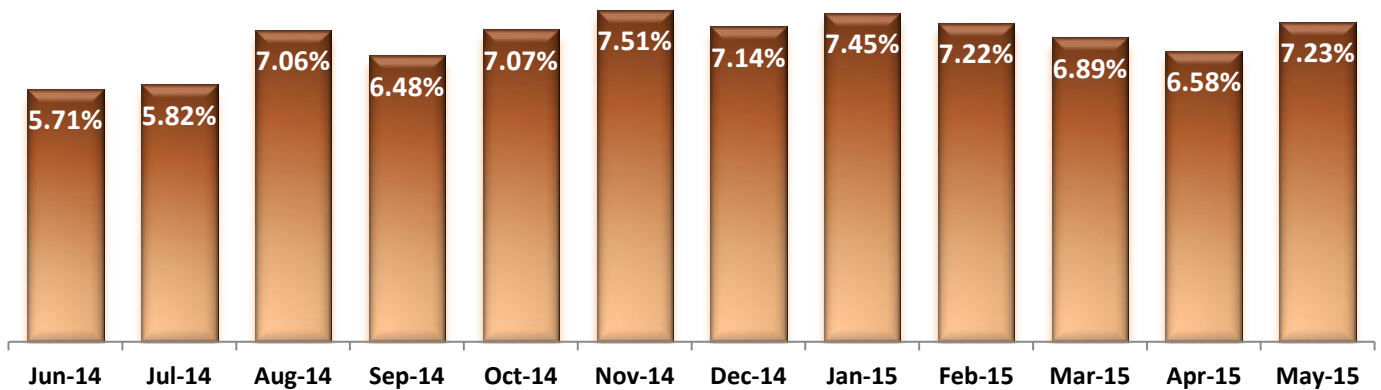


* ADR Rate: Number of reported adverse drug reaction events that occurred for every 1000 inpatient days.

19. Percent of Missing Documentation on Med-Administration

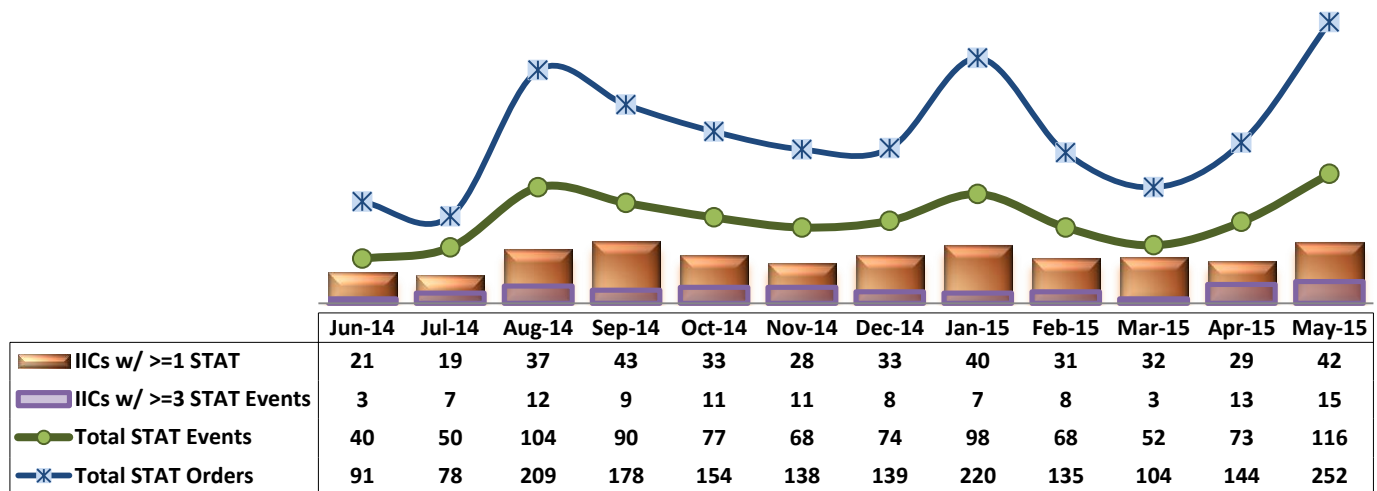


20. Medication Refusal Rate*



* Medication Refusal Rate: the number of refused medication doses divided by the total number of doses scheduled for administration.

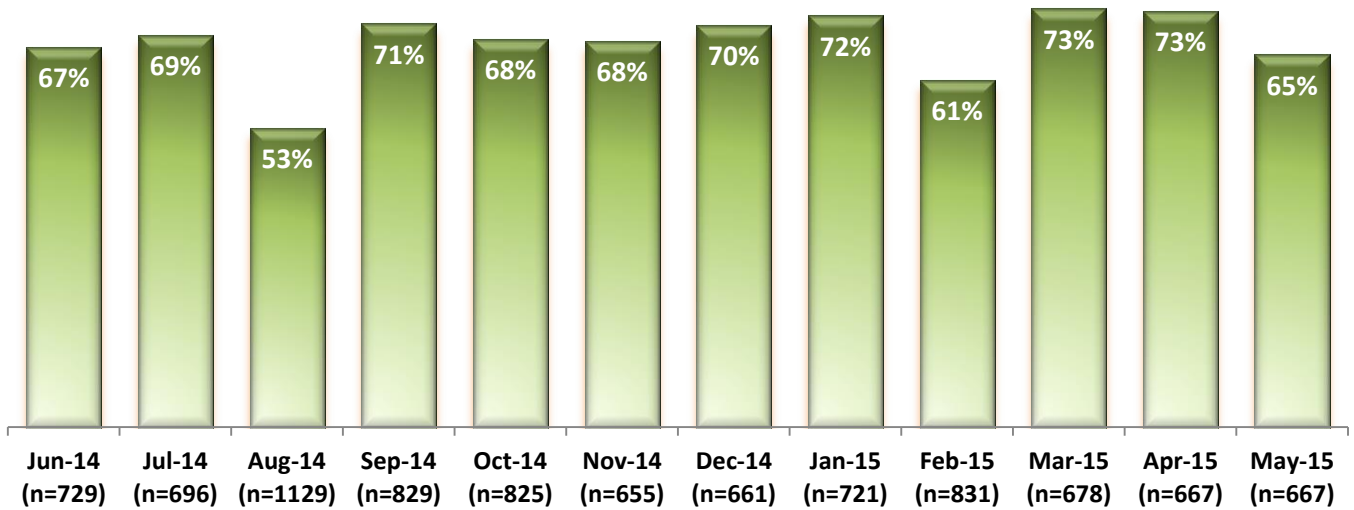
21. Number of STAT Events and Individuals Involved



Key Trends: Environment of Care (22)

- During CY2014, on average, the Hospital received a total of 773 work orders per month (or 25 per day) through SiteFM. Of those, 70% were completed within 3 days.
- In the month of May 2015, the Hospital received a total of 667 SiteFM work orders (22 per day).
- The 3-day completion rate of SiteFM work orders in May 2015 was 65%, which is a decline from 73% in April.

22. Percentage of SiteFM Work Orders Completed within 3 Days

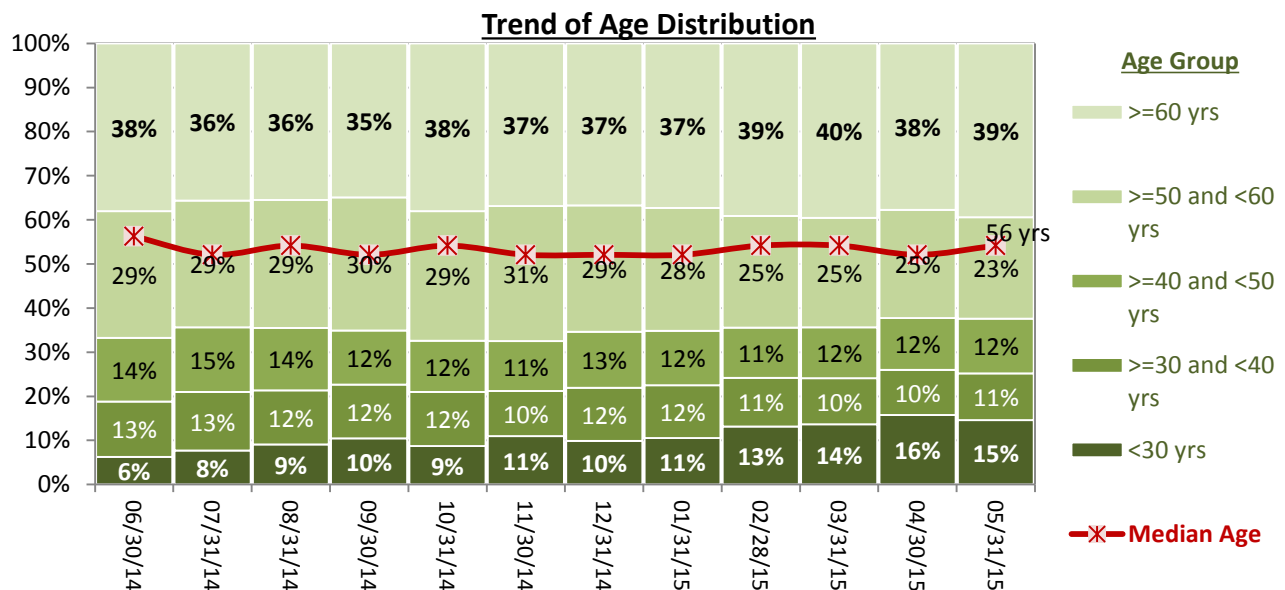
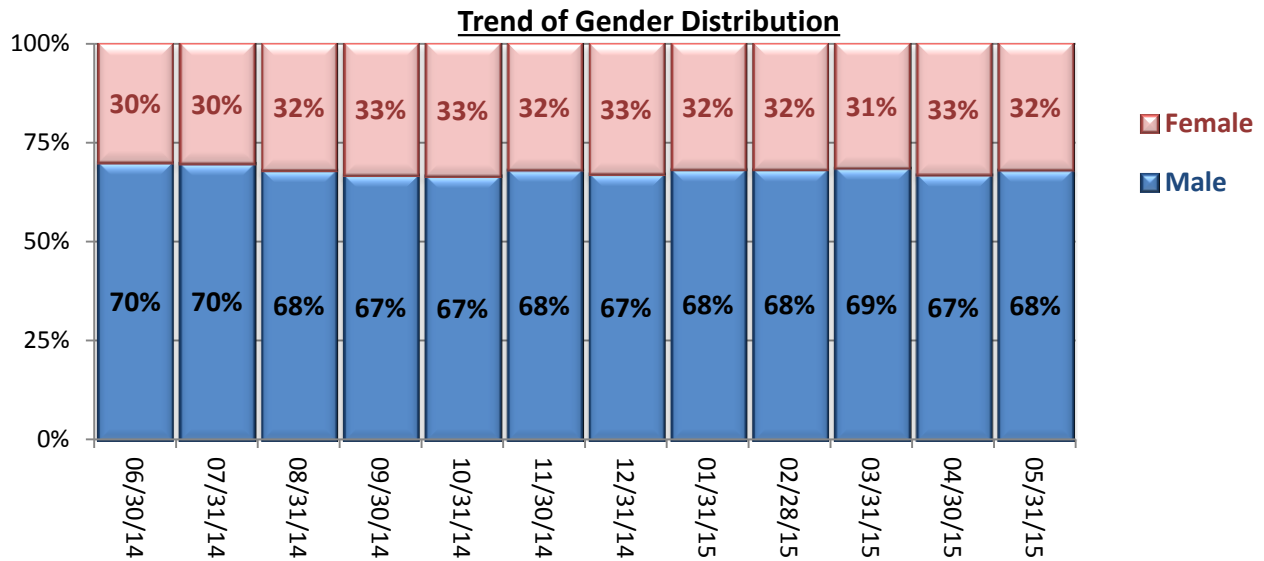


* This data has been analyzed for the first time as of early December 2014.

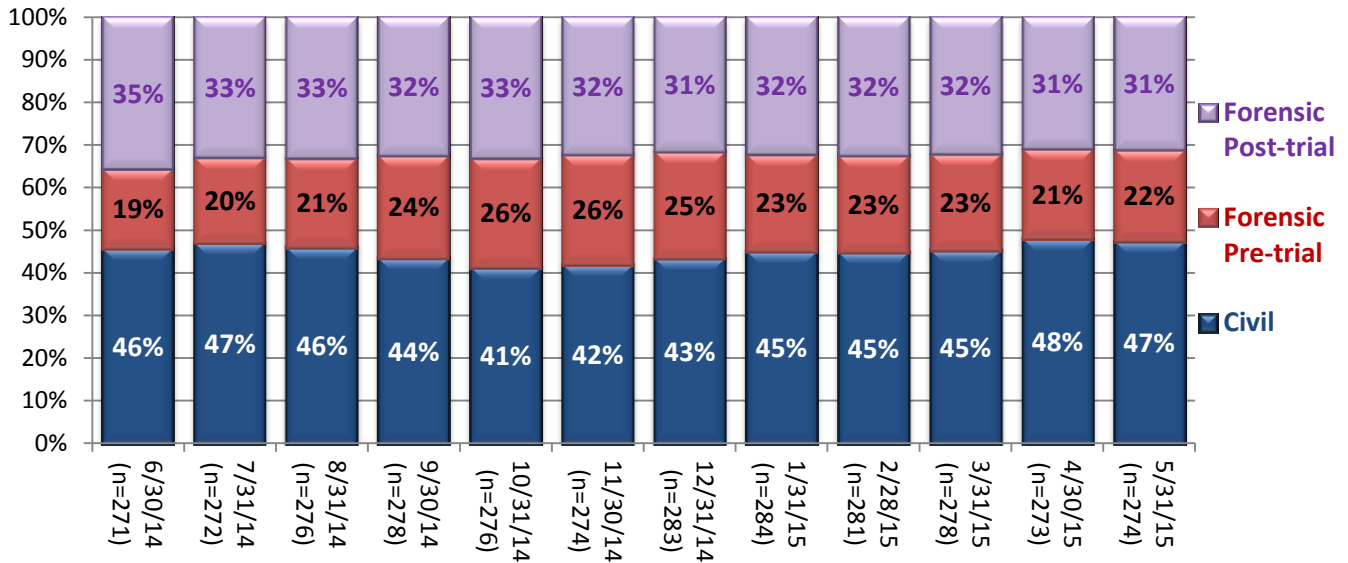
Key Trends: Demographics, Legal Status, and Length of Stay (23)

- The proportion of female individuals remaining in the Hospital’s care increased in FY14, from 26% as of October 2013 to 33% in September 2014, since when the proportion of females has ranged between 31% and 33%.
- While the percent of individuals with 60 years or older ranged from 35% to 40%, the percent of individuals under 30 years old consistently and significantly increased over the past 12 months: as of May 2014, only 6% among IICs were younger than 30 years of age but this age group constitutes 15% of the IICs as of May 2015. This trend coincides with the significant increase in the number of Pre-trial admissions, which tend to include more of younger population.
- The median length of stay (LOS) for individuals remaining in care had been decreasing gradually since February 2014, falling to the lowest level (362 days or 12 months) as of December 31, 2014. Since then, the median LOS increased slightly and has been hovering around 400 days. As of April 2015, the median LOS is 414 days.

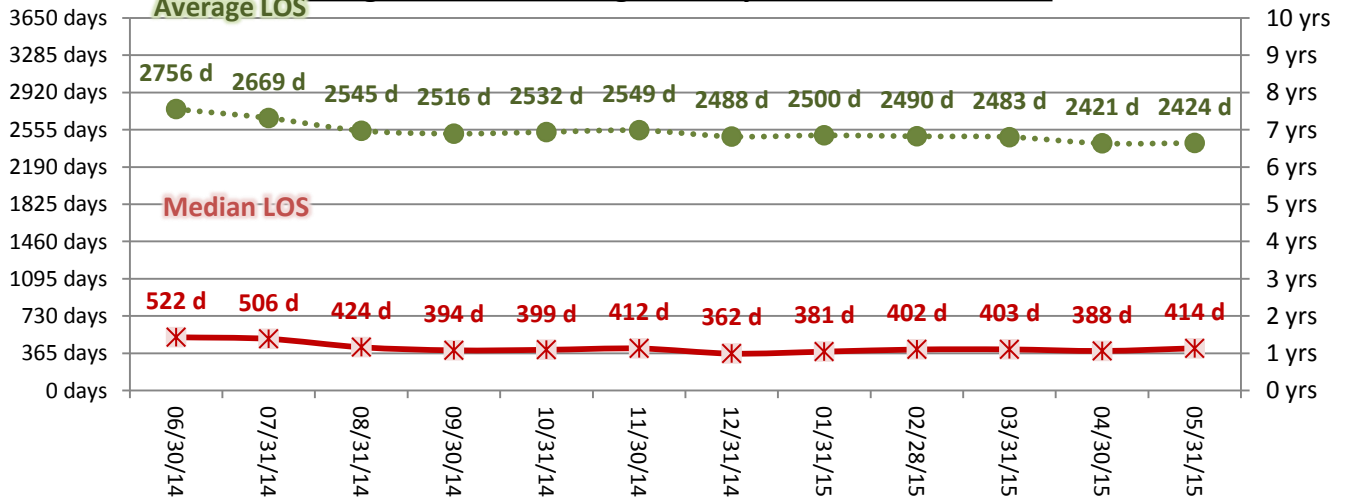
23. Demographics and Length of Stay



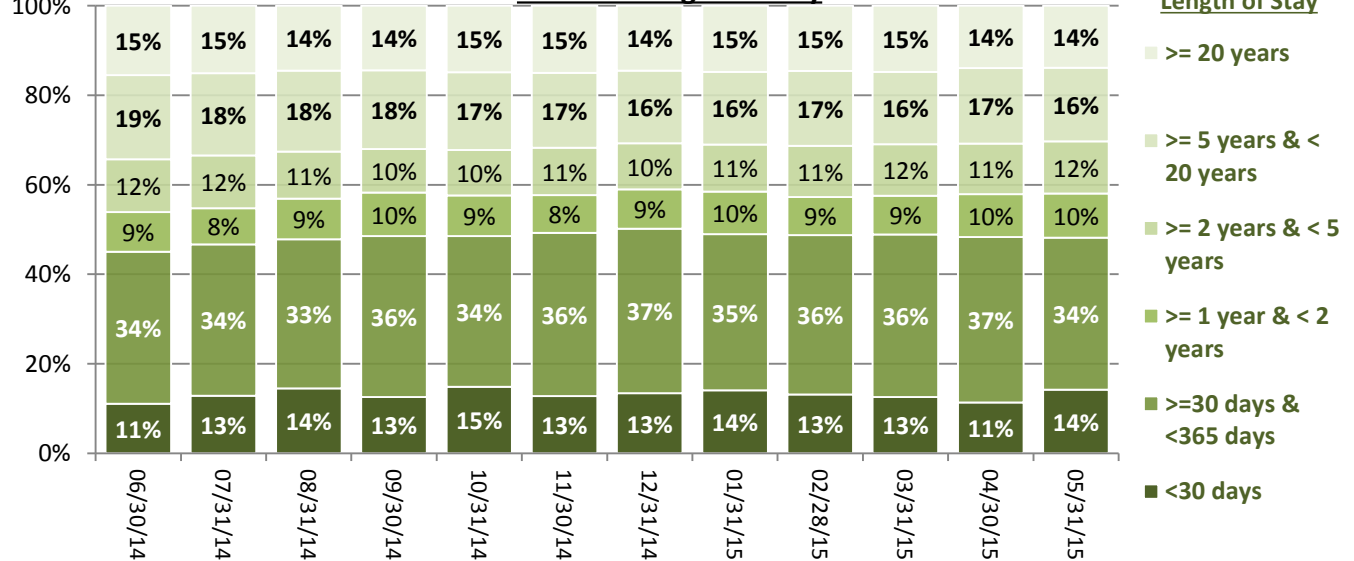
Trend of Legal Status Distribution



Average and Median Length of Stay for Individuals in Care



Trend of Length of Stay



Performance Related Information for Staff & Managers

1. Census, Admissions, Discharges & Transfers

Data Source: Avatar

Updated as of 06/08/15

Category	Jun-14	Jul-14	Aug-14	Sep-14	Oct-14	Nov-14	Dec-14	Jan-15	Feb-15	Mar-15	Apr-15	May-15	Monthly Average	Total (12mths)	Figure	
Admissions	Civil	10	13	19	10	15	12	18	18	16	19	20	16	16	186	Figure 1
	Pre-trial	21	25	20	25	26	23	23	22	21	17	12	22	21	257	
	Post-trial	1	0	3	2	4	0	2	2	2	1	1	4	2	22	
	Total	32	38	42	37	45	35	43	42	39	37	33	42	39	465	
Discharges	Civil	14	12	21	17	26	13	13	19	23	18	15	22	18	213	Figure 2
	Pre-trial	14	19	16	15	17	21	20	22	16	19	17	16	18	212	
	Post-trial	1	6	1	3	4	3	1	1	2	3	6	3	3	34	
	Total	29	37	38	35	47	37	34	42	41	40	38	41	38	459	
Net Increase During Month	Civil	-4	1	-2	-7	-11	-1	5	-1	-7	1	5	-6		-27	
	Pre-trial	7	6	4	10	9	2	3	0	5	-2	-5	6		45	
	Post-trial	0	-6	2	-1	0	-3	1	1	0	-2	-5	1		-12	
	Total	3	1	4	2	-2	-2	9	0	-2	-3	-5	1		6	
All Individuals on Roll at End of Month	271	272	276	278	276	274	283	284	281	278	273	274	277			
a. Present on Unit	267	271	270	275	272	270	281	275	274	276	270	269	273			
b. On AL	4	1	6	3	4	4	2	9	7	2	3	5	4			
c. On UL	0	0	0	0	0	0	0	0	0	0	0	0	0			
All Individuals on Roll: Daily Average during Month*	270	265	271	283	276	272	277	284	280	274	274	272	275			Figure 3
a. Present on Unit	265	261	267	278	272	269	273	279	276	269	270	269	271			
b. On AL	5	4	4	5	4	3	4	5	4	5	4	3	3.8			
c. On UL	0.17	0	0	0	0	0	0	0	0	0	0	0	0.01			
Patient Days**	7941	8084	8277	8326	8422	8078	8472	8610	7738	8348	8095	8349	8228	98740		
Inter-Unit Transfers during Month	7	22	11	22	9	9	13	7	7	11	1	22	12	141	Figure 4	
Medical Leaves Initiated during Month	Emergency	20	24	16	15	10	10	18	23	11	11	10	18	16	186	
	Non-Emer	81	88	67	68	62	71	61	59	55	71	79	81	70	843	
	Total	101	112	83	83	72	81	79	82	66	82	89	99	86	1029	
Non-Medical Leaves Initiated during Month	439	430	386	397	431	390	393	412	323	391	334	251	381	4577		
UL Initiated during Month	2	0	0	0	0	0	0	0	0	0	0	1	0	3		
Total Unique Patients Served during Month	300	305	312	312	318	310	315	326	320	317	306	314	313			
30 Day Readmission***	Civil	0	0	2	0	5	0	0	3	3	1	2	1	16		
	Pre-trial	0	1	0	1	1	0	1	1	0	1	1	1	7		
	Post-trial	0	0	0	1	0	0	1	0	0	0	2	0	4		
	Total	0	1	2	2	6	0	2	4	3	2	5	2	27		

* This is the average number of individuals served on a given day for the respective month. Due to rounding from average calculation, numbers from its subcategories a, b, & c may not add up to the total number on this row.

** It counts the number of patients who are present on the unit and excludes those on authorized or unauthorized leave at 11:59pm on a given day.

*** Number of patients returning within 30 days of discharges that occurred during month.

Performance Related Information for Staff & Managers

2. Key Performance Indicators

Data Source: UI DB, MV DB, ADR DB, Restraint/Seclusion Log, and Avatar

Updated as of 06/08/15

Category	Jun-14	Jul-14	Aug-14	Sep-14	Oct-14	Nov-14	Dec-14	Jan-15	Feb-15	Mar-15	Apr-15	May-15	Monthly Average	NPR* (Jun-13)	Figure
30 Day Readmit (Discharge Cohort)**	Civil	0.0%	0.0%	9.5%	0.0%	19.2%	0.0%	0.0%	15.8%	13.0%	5.6%	13.3%		8.2%	Figure 5
	Pre-trial	0.0%	5.3%	0.0%	6.7%	5.9%	0.0%	5.0%	4.5%	0.0%	5.3%	5.9%		3.6%	
	Post-trial	0.0%	0.0%	0.0%	33.3%	0.0%	0.0%	100.0%	0.0%	0.0%	0.0%	33.3%		12.8%	
	Combined	0.0%	2.7%	5.3%	5.7%	12.8%	0.0%	5.9%	9.5%	7.3%	5.0%	13.2%		6.4%	
Number of Unusual Incidents*	174	199	249	190	217	208	238	240	198	193	192	276	215		Figure 6
Patient Unusual Incident Rate	20.7	23.0	27.8	21.4	24.6	23.5	26.2	25.8	24.6	21.8	22.0	30.8	24.4		Figure 7
UI by Severity	Catastrophe	0	0	0	0	0	0	0	0	0	0	0	0		Figure 9
	High	36	42	58	30	47	42	39	53	34	34	31	70	43	
	Medium	82	87	102	95	85	90	104	113	102	75	90	108	94	
	Low	56	70	89	65	85	76	95	74	62	84	71	98	77	
Physical Assault Incident Rate	4.5	4.7	6.0	5.3	8.0	5.2	7.0	8.4	7.5	6.9	5.8	9.2	6.6		
Selected Types of Incidents	Physical Assault	36	38	50	44	67	42	59	72	58	58	47	77	54	Figure 10
	Aggressive Behav.	61	71	102	66	65	71	78	73	63	46	59	99	71	
	Psych Emergency	48	45	86	56	67	58	72	89	72	47	62	97	67	
	Fall	20	25	24	25	30	31	35	27	33	27	18	32	27	
	Injury	24	26	40	37	36	39	37	41	32	33	32	43	35	
Physical Assaults by Severity	High	10	7	19	14	21	14	10	28	13	14	9	29	13	Figure 11
	Medium	8	15	9	18	21	17	21	26	30	20	16	23	19	
	Low	18	16	22	12	25	11	28	18	15	24	22	25	20	
Patient Injury Rate***	0.63	0.12	0.36	0.48	0.12	0.12	0.00	0.00	0.13	0.12	0.12	0.36	0.21	0.38	Figure 12
Patients with Major Injuries***	5	1	3	4	1	1	0	0	1	1	1	3	2		
Total Patients Injured***	15	16	24	28	27	27	24	31	22	23	19	29	24		
Total Staff Injured***	15	12	30	13	14	23	23	17	11	13	13	32	18		Figure 13
Elopement Rate	0.25	0.00	0.00	0.00	0.00	0.00	0.00	0.00	0.00	0.00	0.00	0.12	0.03	0.13	Figure 16
Medication Variance Rate	5.04	3.59	3.75	3.60	2.73	1.73	0.83	1.16	5.56	10.54	2.22	2.16	3.55		Figure 17
Adverse Drug Reaction Rate	0.76	0.62	0.24	0.36	0.36	0.50	0.35	0.46	0.13	0.48	0.25	0.36	0.41		Figure 18
Missing Med-Admin Documentation	0.47%	0.66%	0.64%	0.60%	0.61%	0.57%	0.58%	0.86%	0.87%	0.56%	0.54%	0.62%	0.63%		Figure 19
Percent of Medication Refusal	5.71%	5.82%	7.06%	6.48%	7.07%	7.51%	7.14%	7.45%	7.22%	6.89%	6.58%	7.23%	6.85%		Figure 20
Percent of Patients Restrained	0.7%	0.3%	0.6%	1.0%	0.3%	1.0%	0.6%	0.6%	1.3%	0.3%	8.8%	13.4%	0.8%	5.8%	Figure 14
Percent of Patients Secluded	2.7%	1.6%	3.8%	3.8%	2.8%	3.5%	2.9%	3.1%	3.8%	2.8%	3.9%	3.8%	3.2%	2.4%	
Restraint Hours Rate	0.022	0.077	0.108	0.030	0.010	0.016	0.028	0.072	0.015	0.004	0.028	0.072	0.040	0.71	Figure 15
Seclusion Hours Rate	0.118	0.073	0.085	0.049	0.040	0.086	0.112	0.045	0.088	0.101	0.043	0.049	0.074	0.44	
SiteFM Work Orders Completed within 3 days	67%	69%	53%	71%	68%	68%	70%	72%	61%	73%	73%	65%	67%		Figure 22
Total SiteFM Work Orders	486	479	593	587	562	444	466	521	506	498	487	436	505	757	

* National Public Rate, NASMHPD Research Institute, National Research Institute (NRI), Data as of June 2013, Published in November 2013.

** Percentage of patients returning within 30 days of discharges that occurred during month

*** Refer to the next page [UI & Medication]

Performance Related Information for Staff & Managers

3. Unusual Incident & Medication

Data Source: UI DB, MV DB, ADR DB, and Avatar

Updated as of 06/08/15

Category	Jun-14	Jul-14	Aug-14	Sep-14	Oct-14	Nov-14	Dec-14	Jan-15	Feb-15	Mar-15	Apr-15	May-15	Monthly Average	Total (12mths)	NPR* (Jun-13)	
Unusual Incidents (excluding MV)**	Total UIs	174	199	249	190	217	208	238	240	198	193	192	276	215	2574	
	Major UIs Only	126	150	190	148	171	168	188	188	156	144	150	227	167	2006	
	Pt Involved UI Only	164	186	230	178	207	190	222	222	190	182	178	257	201	2406	
	Patient UI Rate	20.7	23.0	27.8	21.4	24.6	23.5	26.2	25.8	24.6	21.8	22.0	30.8	24.4		
Unique Pts Involved in UI	100	107	116	107	143	122	122	139	115	115	107	138	119	1431		
Selected Types of Incidents	Physical Assault	36	38	50	44	67	42	59	72	58	58	47	77	54	648	
	Aggressive Behavior	61	71	102	66	65	71	78	73	63	46	59	99	71	854	
	Psych Emergency	48	45	86	56	67	58	72	89	72	47	62	97	67	799	
	Fall	20	25	24	25	30	31	35	27	33	27	18	32	27	327	
	Injury	24	26	40	37	36	39	37	41	32	33	32	43	35	420	
Physical Assault Rate	4.5	4.7	6.0	5.3	8.0	5.2	7.0	8.4	7.5	6.9	5.8	9.2	6.6			
UI by Severity	Catastrophe	0	0	0	0	0	0	0	0	0	0	0	0	0	0	
	High	36	42	58	30	47	42	39	53	34	34	31	70	43	516	
	Medium	82	87	102	95	85	90	104	113	102	75	90	108	94	1133	
Low	56	70	89	65	85	76	95	74	62	84	71	98	77	925		
Physical Assaults by Severity	High	10	7	19	14	21	14	10	28	13	14	9	29	13	188	
	Medium	8	15	9	18	21	17	21	26	30	20	16	23	19	224	
	Low	18	16	22	12	25	11	28	18	15	24	22	25	20	236	
Total Patients Injured***	15	16	24	28	27	27	24	31	22	23	19	29	24	285		
Patients with Major Injuries***	5	1	3	4	1	1	0	0	1	1	1	3	2	21		
Patient Injury Rate***	0.63	0.12	0.36	0.48	0.12	0.12	0.00	0.00	0.13	0.12	0.12	0.36	0.21		0.38	
Total Staff Injured**	15	12	30	13	14	23	23	17	11	13	13	32	18			
Total UIs Documented in Avatar	2	0	0	0	0	0	0	0	0	0	0	1	0	3		
Elopement Rate	0.25	0.00	0.00	0.00	0.00	0.00	0.00	0.00	0.00	0.00	0.00	0.12	0.03		0.13	
Med Variance (MV) Reports**	40	29	31	30	23	14	7	10	43	88	18	18	29	351		
MV Rate	5.04	3.59	3.75	3.60	2.73	1.73	0.83	1.16	5.56	10.54	2.22	2.16	3.55			
Adverse Drug Reactions Reports	6	5	2	3	3	4	3	4	1	4	2	3	3	40		
ADR Rate	0.76	0.62	0.24	0.36	0.36	0.50	0.35	0.46	0.13	0.48	0.25	0.36	0.41			
Total Med Administrations Scheduled	104448	107179	105835	103590	105994	104198	107578	109625	96178	103742	99674	101673		1249714		
Total Missing Documentations	493	704	680	626	647	595	622	939	838	579	543	626		7892		
Percent of Missing Documentation	0.47%	0.66%	0.64%	0.60%	0.61%	0.57%	0.58%	0.86%	0.87%	0.56%	0.54%	0.62%		0.63%		
Total Medication Doses Refused	5969	6239	7472	6712	7493	7823	7676	8164	6940	7145	6562	7352		85547		
Percent of Medication Refusal	5.71%	5.82%	7.06%	6.48%	7.07%	7.51%	7.14%	7.45%	7.22%	6.89%	6.58%	7.23%		6.85%		
Total STAT Orders	91	78	209	178	154	138	139	220	135	104	144	252	154		Figure 21	
Total STAT Events****	40	50	104	90	77	68	74	98	68	52	73	116	76			
Total Individuals Involved >=1 STAT	21	19	37	43	33	28	33	40	31	32	29	42	32			
Total Patients with >=3 STAT Events	3	7	12	9	11	11	8	7	8	3	13	15	9			

* National Public Rate, NASMHPD Research Institute, National Research Institute (NRI), Data as of June 2013, Published in November 2013.

** Numbers may change if any additional UI report is made after the data run date from UI database (around the 15th of the following month); According to the revised UI policy as of November 4, 2013, a medication variance (MV) incident became no longer considered to be an unusual incident, and a medication or vital sign refusal incident is not longer an UI as of May 2014. UI data for the past 12 months in this report has been updated to reflect this change and reanalyzed in order to show the UI trend in consistent logic.

*** Injury is broadly defined to include any type of injuries regardless of the cause or severity level. The total number of patients injured represents all of the reported injuries including minor injuries treated with first aid alone. However, the patient injury rate considers only the number of patient injuries that required beyond first-aid level treatment based on the NRI definition and the patient injury rate is the number of 'major' patient injuries per every 1000 inpatient days

**** One STAT event may involve more than one STAT order for the same patient. Any orders placed within 20 minute timeframe are considered to belong to one STAT event.

Performance Related Information for Staff & Managers

4. Restraint & Seclusion

Data Source: Restraint/Seclusion Log and UI DB (for # of total events and patients) and Avatar (for patient days/hours)

Updated as of 06/08/15

Category		Jun-14	Jul-14	Aug-14	Sep-14	Oct-14	Nov-14	Dec-14	Jan-15	Feb-15	Mar-15	Apr-15	May-15	Monthly Average	Total (12mths)	NPR* (Jun-13)
Number of Restraint Events	Mechanical	4	7	7	6	1	3	6	9	4	1	6	16	5.8	70	
	Physical Hold											45	50	47.5		
	Total											51	66	58.5		
Number of Unique Patients Restrained	Mechanical	2	1	2	3	1	3	2	2	4	1	3	7	2.6		
	Physical Hold											24	35	29.5		
	Total											27	42	34.5		
Percentage of Patients Restrained**	Mechanical	0.7%	0.3%	0.6%	1.0%	0.3%	1.0%	0.6%	0.6%	1.3%	0.3%	1.0%	2.2%	0.8%		
	Physical Hold											7.8%	11.1%	9.5%		
	Total											8.8%	13.4%	11.1%		5.8%
Total Restraint Hours (h:mm)**	Mechanical	4:16	15:00	21:25	6:00	2:00	3:06	5:38	14:56	2:46	0:50	4:44	13:39	7:51	94:20	
	Physical Hold											0:45	0:50	0:47		
	Total											5:29	14:29	9:59		
Restraint Hours Rate**	Mechanical	0.022	0.077	0.108	0.030	0.010	0.016	0.028	0.072	0.015	0.004	0.024	0.068	0.040		
	Physical Hold											0.004	0.004	0.004		
	Total											0.028	0.072	0.051		0.71
Number of Seclusion Events		22	14	21	17	12	19	14	15	20	15	19	22	17.5	210	
Number of Unique Patients Secluded		8	5	12	12	9	11	9	10	12	9	12	12	10.1		
Percentage of Patients Secluded		2.7%	1.6%	3.8%	3.8%	2.8%	3.5%	2.9%	3.1%	3.8%	2.8%	3.9%	3.8%	3.2%		2.4%
Total Seclusion Hours (h:mm)		22:32	14:14	16:51	9:52	8:01	16:36	22:48	9:24	16:21	20:15	8:24	9:55	14:36	175:13	
Seclusion Hours Rate		0.118	0.073	0.085	0.049	0.040	0.086	0.112	0.045	0.088	0.101	0.043	0.049	0.074		0.44

* National Public Rate, NASMHPD Research Institute, National Research Institute (NRI), Data as of June 2013, Published in November 2013.

** Restraint data prior to April 2015 includes only mechanical restraints. The Hospital's restraint policy has been revised to consider a physical hold a restraint and data as of April 2015 reflects this change. The duration of each physical hold event is counted as one (1) minute as a physical hold is ordered/used only as a temporary intervention that lasts less than a minute to break up any physical altercations or to administer emergency medications.

Performance Related Information for Staff & Managers

6. Major Unusual Incidents by Incident Location/Unit

Data Source: UI DB

Updated as of 06/08/15

Category		Jun-14	Jul-14	Aug-14	Sep-14	Oct-14	Nov-14	Dec-14	Jan-15	Feb-15	Mar-15	Apr-15	May-15	Monthly Average	Total (12mths)	Percent
Total Unusual Incidents		174	199	249	190	217	208	238	240	198	193	192	276	215	2574	100%
Incident Location	1A	4	7	15	4	11	12	9	5	5	11	13	16	9	112	4%
	1B	9	21	19	10	18	14	12	12	10	12	18	9	14	164	6%
	1C	11	6	12	18	32	14	24	28	25	7	7	33	18	217	8%
	1D	22	19	29	20	7	18	40	37	15	23	26	29	24	285	11%
	1E	13	12	22	21	25	15	26	15	12	12	24	37	20	234	9%
	1F	15	37	32	28	25	23	34	43	28	28	20	46	30	359	14%
	1G	24	12	28	20	13	7	7	11	12	7	15	12	14	168	7%
	2A	3	6	10	7	4	12	7	16	3	6	5	7	7	86	3%
	2B	0	2	4	8	5	15	2	2	3	3	4	5	4	53	2%
	2C	19	22	20	9	17	10	16	14	24	10	2	9	14	172	7%
	2D	13	20	18	17	18	26	22	19	19	33	24	22	21	251	10%
	TLC	24	14	20	15	26	26	23	21	31	27	16	26	22	269	10%
	Other	17	21	20	13	16	16	16	17	11	14	18	25	17	204	8%
	Physical Assault		36	38	50	44	67	42	59	72	58	58	47	77	54	648
Incident Location	1A	0	2	2	1	0	0	0	1	2	4	2	3	1	17	3%
	1B	1	3	0	2	4	2	3	0	1	0	1	0	1	17	3%
	1C	3	1	0	3	9	0	8	6	6	2	1	15	5	54	8%
	1D	8	5	14	11	4	3	5	10	4	7	7	6	7	84	13%
	1E	3	5	1	4	12	4	3	5	4	8	5	6	5	60	9%
	1F	2	5	3	5	8	9	19	15	13	10	8	20	10	117	18%
	1G	4	3	8	9	4	0	2	4	5	1	4	1	4	45	7%
	2A	0	0	0	0	1	1	2	5	1	0	1	0	1	11	2%
	2B	0	2	0	0	0	1	0	0	0	0	0	0	0	3	0%
	2C	7	4	3	2	4	6	5	7	10	4	0	3	5	55	8%
	2D	3	1	11	4	11	8	6	7	4	12	12	8	7	87	13%
	TLC - Intensive	2	2	3	0	7	5	4	8	6	9	2	7	5	55	8%
	TLC - Transitional	0	2	4	3	0	3	1	3	1	1	3	2	2	23	4%
	Other	3	3	1	0	3	0	1	1	1	0	1	6	2	20	3%

Performance Related Information for Staff & Managers

6. Major Unusual Incidents by Incident Location/Unit

Data Source: UI DB

Updated as of 06/08/15

Category		Jun-14	Jul-14	Aug-14	Sep-14	Oct-14	Nov-14	Dec-14	Jan-15	Feb-15	Mar-15	Apr-15	May-15	Monthly Average	Total (12mths)	Percent
Aggressive Behavior		61	71	102	66	65	71	78	73	63	46	59	99	71	854	132%
Incident Location	1A	1	1	5	1	2	1	3	0	0	0	1	0	1	15	2%
	1B	0	3	7	4	5	2	1	0	0	1	3	0	2	26	4%
	1C	1	3	6	7	10	3	7	10	12	2	2	9	6	72	11%
	1D	5	4	12	7	1	7	23	21	8	7	14	15	10	124	19%
	1E	3	2	15	11	8	7	13	7	5	1	12	21	9	105	16%
	1F	10	20	18	10	14	11	12	15	10	7	7	24	13	158	24%
	1G	17	5	14	8	0	2	0	0	2	1	6	8	5	63	10%
	2A	2	4	7	3	1	2	1	6	2	2	1	3	3	34	5%
	2B	0	0	1	4	2	11	0	0	0	0	0	0	2	18	3%
	2C	10	12	6	3	5	2	4	1	5	3	0	2	4	53	8%
	2D	2	8	1	2	5	11	8	5	7	11	6	7	6	73	11%
	TLC - Intensive	7	4	3	3	3	4	3	4	8	6	4	4	4	53	8%
	TLC - Transitional	2	3	4	1	4	5	1	3	2	2	3	5	3	35	5%
	Other	1	2	3	2	5	3	2	1	2	3	0	1	2	25	4%
Psych Emergency		48	45	86	56	67	58	72	89	72	47	62	97	67	799	123%
Incident Location	1A	1	1	1	0	1	0	3	1	1	0	1	0	1	10	2%
	1B	0	2	3	1	7	2	1	0	0	0	3	1	2	20	3%
	1C	2	1	3	2	12	0	4	8	7	4	1	19	5	63	10%
	1D	6	3	18	9	3	9	14	16	11	9	14	16	11	128	20%
	1E	3	1	16	16	14	10	15	11	7	5	17	20	11	135	21%
	1F	4	19	13	10	15	16	19	22	15	15	10	26	15	184	28%
	1G	17	5	16	12	3	0	0	1	2	1	4	2	5	63	10%
	2A	0	0	0	0	0	0	1	4	1	0	2	3	1	11	2%
	2B	0	0	1	0	0	5	0	0	0	0	0	0	1	6	1%
	2C	10	7	7	0	4	0	1	4	7	1	0	0	3	41	6%
	2D	0	3	5	3	5	11	13	14	9	3	7	3	6	76	12%
	TLC - Intensive	4	2	2	0	2	2	1	5	10	6	1	1	3	36	6%
	TLC - Transitional	0	0	1	2	0	2	0	3	0	1	2	4	1	15	2%
	Other	1	1	0	1	1	1	0	0	2	2	0	2	1	11	2%

Performance Related Information for Staff & Managers

6. Major Unusual Incidents by Incident Location/Unit

Data Source: UI DB

Updated as of 06/08/15

Category		Jun-14	Jul-14	Aug-14	Sep-14	Oct-14	Nov-14	Dec-14	Jan-15	Feb-15	Mar-15	Apr-15	May-15	Monthly Average	Total (12mths)	Percent
Fall		20	25	24	25	30	31	35	27	33	27	18	32	27	327	100%
Incident Location	1A	0	1	4	2	4	9	3	3	2	5	0	8	3	41	13%
	1B	1	4	6	4	4	5	4	3	6	3	2	2	4	44	13%
	1C	2	0	1	0	5	2	8	2	0	3	1	2	2	26	8%
	1D	0	5	2	3	2	2	1	1	0	2	4	1	2	23	7%
	1E	2	0	1	1	2	2	1	0	2	0	0	1	1	12	4%
	1F	1	3	1	2	1	2	2	7	4	3	1	2	2	29	9%
	1G	0	2	2	1	2	1	1	2	4	1	1	2	2	19	6%
	2A	0	0	0	1	0	0	2	0	0	1	1	2	1	7	2%
	2B	0	0	1	2	2	1	0	0	1	1	2	2	1	12	4%
	2C	1	3	1	0	1	0	5	3	5	0	0	0	2	19	6%
	2D	4	4	1	5	2	1	1	1	3	3	2	3	3	30	9%
	TLC - Intensive	1	0	0	1	1	1	1	2	1	1	1	4	1	14	4%
	TLC - Transitional	2	1	2	1	1	3	3	0	1	0	0	0	1	14	4%
	Other	6	2	2	2	3	2	3	3	4	4	3	3	3	37	11%
Physical Injury		24	26	40	37	36	39	37	41	32	33	32	43	35	420	100%
Incident Location	1A	2	2	2	1	0	1	0	2	2	2	2	3	2	19	5%
	1B	1	4	2	1	2	3	1	0	1	3	5	2	2	25	6%
	1C	2	0	2	1	6	0	3	5	4	3	0	8	3	34	8%
	1D	2	3	6	8	3	3	7	4	1	7	5	6	5	55	13%
	1E	3	5	4	2	7	4	1	0	2	1	2	4	3	35	8%
	1F	1	1	4	12	5	8	8	5	8	7	3	6	6	68	16%
	1G	2	2	6	0	3	1	2	3	1	0	1	0	2	21	5%
	2A	0	0	0	1	0	2	2	0	1	0	2	0	1	8	2%
	2B	0	1	0	1	0	0	0	0	0	0	1	1	0	4	1%
	2C	2	3	4	2	2	2	4	6	6	1	0	1	3	33	8%
	2D	1	2	1	4	2	7	5	5	1	1	4	3	3	36	9%
	TLC - Intensive	2	1	2	0	4	3	1	7	1	5	2	4	3	32	8%
	TLC - Transitional	2	0	2	2	0	3	2	1	2	0	0	2	1	16	4%
	Other	4	2	5	2	2	2	1	3	2	3	5	3	3	34	8%

* Not every incident is a major incident. This counts only those incidents that were classified to be major based on the policy.

Performance Related Information for Staff & Managers

5. Demographic Information of Individuals in Care

Data Source: Avatar

Updated as of 06/08/15

Category	Sub-group	Jun-14	Jul-14	Aug-14	Sep-14	Oct-14	Nov-14	Dec-14	Jan-15	Feb-15	Mar-15	Apr-15	May-15	Monthly Average	Percent*
Total Active (on Roll) at End of Month*		271	272	276	278	276	274	283	284	281	278	273	274	277	
Gender	Female	81	82	88	92	92	87	93	90	89	87	90	87	88	31.9%
	Male	190	190	188	186	184	187	190	194	192	191	183	187	189	68.1%
Age	Median Age (Years)	57 yrs	55 yrs	56 yrs	55 yrs	56 yrs	55 yrs	55 yrs	55 yrs	56 yrs	56 yrs	55 yrs	56 yrs	56 yrs	
	<30 years old	17	21	25	29	24	30	28	30	37	38	43	40	30	10.9%
	>=30 and <40 years old	34	36	34	34	34	28	34	34	31	29	28	29	32	11.6%
	>=40 and <50 years old	39	40	39	34	32	31	36	35	32	32	32	34	35	12.5%
	>=50 and <60 years old	78	78	80	84	81	84	81	79	71	69	67	63	76	27.6%
	>=60 years old	103	97	98	97	105	101	104	106	110	110	103	108	104	37.4%
Legal Status of Individuals on Roll at End of Month	Emergency	33	28	25	27	22	21	29	27	27	38	45	38	30	10.8%
	Inpatient Commitment	33	36	39	34	35	35	35	36	36	33	35	34	35	12.7%
	Outpatient Commitment	22	28	23	23	22	27	27	27	28	17	16	21	23	8.5%
	Voluntary	36	36	40	37	35	32	32	37	34	38	35	37	36	12.9%
	Non-Protesting	0	0	0	0	0	0	0	1	1	0	0	0	0	0.1%
	Civil Sub-total	124	128	127	121	114	115	123	128	126	126	131	130	124	45.0%
	DC Exam	30	28	30	31	40	35	43	40	41	38	38	39	36	13.0%
	Mentally Incompetent	21	27	28	36	31	36	28	25	23	25	20	20	27	9.6%
	Forensic Pre-trial Sub-total	51	55	58	67	71	71	71	65	64	63	58	59	63	22.7%
	NGBRI - DC	80	74	75	74	76	74	75	76	76	74	70	72	75	27.0%
	NGBRI - US	12	11	11	11	10	10	10	10	10	10	9	9	10	3.7%
	NGBRI - VI	1	1	1	1	1	1	1	1	1	1	1	1	1	0.4%
Dual Commitment	1	1	2	2	2	1	1	1	1	1	1	0	1	0.4%	
Sexual Psychopath (Miller Act)	2	2	2	2	2	2	2	3	3	3	3	3	2	0.9%	
Forensic Post-trial Sub-total	96	89	91	90	91	88	89	91	91	89	84	85	90	32.3%	
Length of Stay	Median LOS (Days)	522 d	506 d	424 d	394 d	399 d	412 d	362 d	381 d	402 d	403 d	388 d	414 d	417 d	
	Average LOS (Days)	2756 d	2669 d	2545 d	2516 d	2532 d	2549 d	2488 d	2500 d	2490 d	2483 d	2421 d	2424 d	2531 d	
	<30 Days	30	35	40	35	41	35	38	40	37	35	31	39	36	13.1%
	>=30 ~ <365 Days	92	92	92	100	93	100	104	99	100	101	101	93	97	35.2%
	>= 1 Year & < 2 Years	24	22	25	27	25	23	25	27	24	24	26	27	25	9.0%
	>= 2 Years & < 5 Years	32	32	29	27	28	29	29	30	32	32	31	32	30	10.9%
	>= 5 Years & < 20 Years	51	50	50	49	48	46	46	46	47	45	46	45	47	17.1%
>= 20 Years	42	41	40	40	41	41	41	42	41	41	38	38	41	14.6%	

* Counts the total number of individuals who are on the hospital roll at end of each month. This number serves as denominator to calculate percentage of each group.