

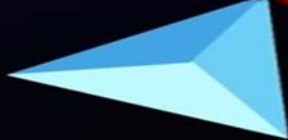


Government of the District of Columbia
Department of Behavioral Health (DBH)



PRISM

Performance Related Information for Staff and Managers



August 2016

Office of Statistics and Reporting (OSR), 09/14/16

Table of Contents

- 1. Admissions to SEH 1
- 2. Discharges from SEH 1
- 3. Average Daily Census..... 2
- 4. Transfers..... 2
- 5. 30-Day Readmission Rate 2
- 6. Unusual Incidents 3
- 7. Patient-Involved Unusual Incidents 3
- 8. Admissions vs. Patient UI Rate 4
- 9. Unusual Incidents by Severity..... 4
- 10. Selected Types of Incidents 4
- 11. Physical Assaults by Severity 5
- 12. Patient Injuries 5
- 13. Staff Injuries 5
- 14. Patient and Staff Falls 6
- 15. Percent of Patients Restrained or Secluded 6
- 16. Restraint Hours Rate & Seclusion Hours Rate 6
- 17. Elopements..... 7
- 18. Reported Medication Variance Events..... 7
- 19. Reported Adverse Drug Reactions 8
- 20. Percent of Missing Documentation on Med-Administration..... 8
- 21. Medication Refusal Rate* 8
- 22. Number of STAT Events and Individuals Involved 9
- 23. Percentage of SiteFM Work Orders Completed within 3 Days 9
- 24. Demographics..... 10
- 25. Length of Stay..... 11

Appendix Tables

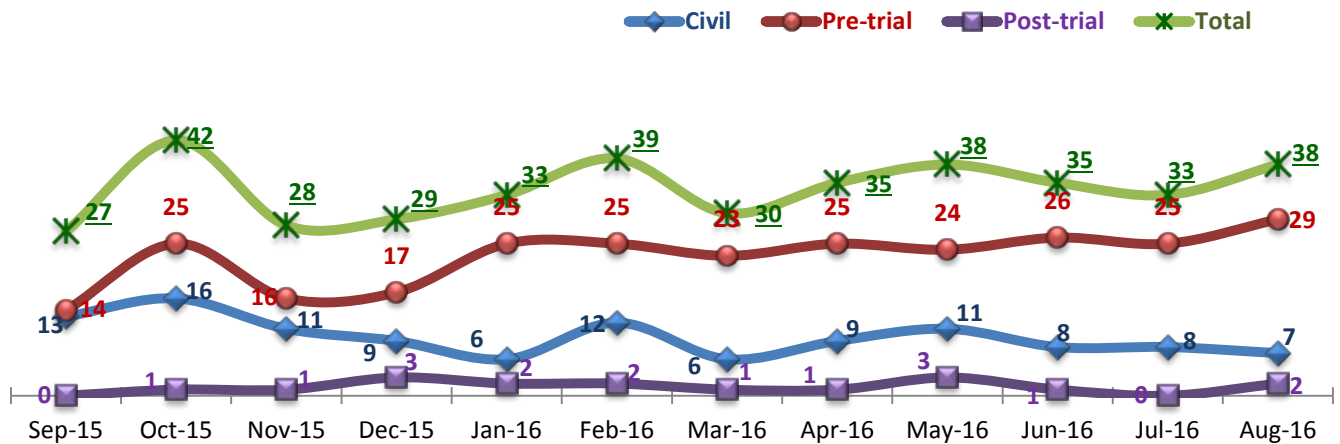
Data Disclaimer

The primary source of data extracted and analyzed herein is Avatar, the Saint Elizabeths Hospital’s electronic medical record system. Additional data source includes, but is not limited to, the Hospital’s Unusual Incident Database and SiteFM. Data reflects information as entered in each system by users. The Office of Statistics and Reporting (OSR) has made reasonable efforts to ensure that data and its accompanying information are as accurate and up-to-date as possible at the time of analysis and publication but does not guarantee the accuracy, reliability, or completeness of data. The OSR is not liable for any misinterpretation or misuse of the data. Use of any information from PRISM must be fully acknowledged and/or cited. Use of PRISM data for anything other than patient care determinations or management of the services provided within the hospital (including external publications, research papers, presentations, etc.) is prohibited without written permission from the Chief Quality and Data Manager Officer at the Saint Elizabeths Hospital.

Key Trends: Admissions, Discharges, Transfers, Census, and Readmissions (1~5)

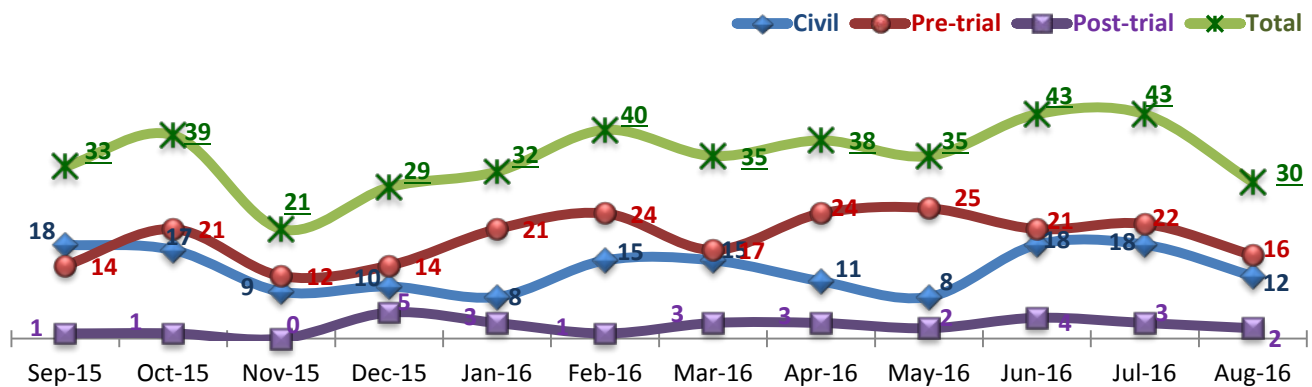
- Due largely to the fact that Pre-trial admissions (29) were at their highest level in the previous 12 months, total admissions increase by 15%, rising from 33 in July to 38 in August 2016. At the same time, discharges decreased by 30%.
- As a result of the discharges outnumbering admissions, the average daily census (ADC) decreased as it fell by 3 dropping from 263 in July to 260 in August. This is the third consecutive month that the ADC has fallen. This trend has not occurred since January – April 2014.
- Inter unit Transfers spiked in August as a backlog of transfers were processed from the intensive units to the transitional units. The 24 transfers were the most since January 2014. The average for the previous 12 months had been 11.
- August registered only 1 Pre-trial 30-day readmission. This is only the second time in the last 15 months that this occurred.

1. Admissions to SEH



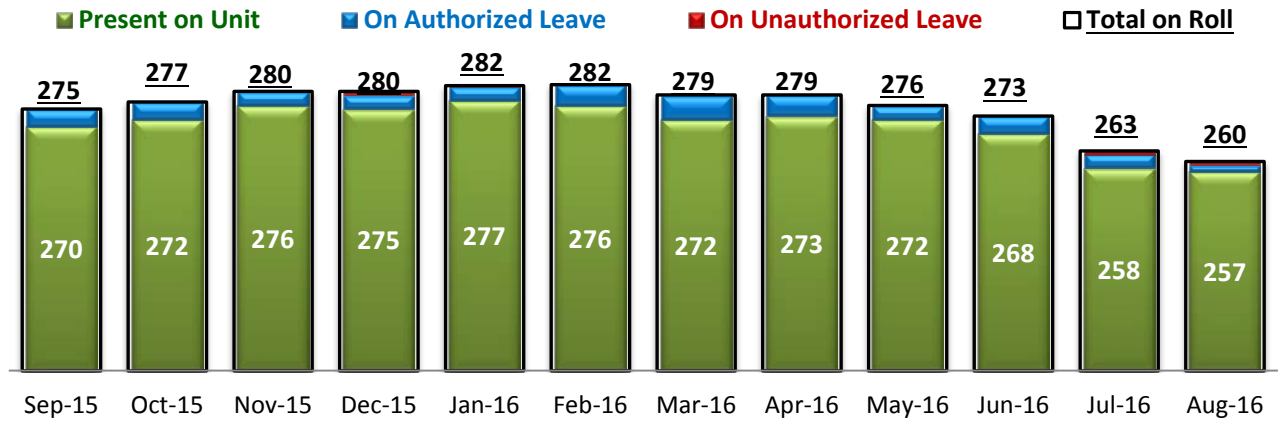
* Number of admissions to SEH inpatient program, including transfers from forensic outpatient to inpatient program.

2. Discharges from SEH



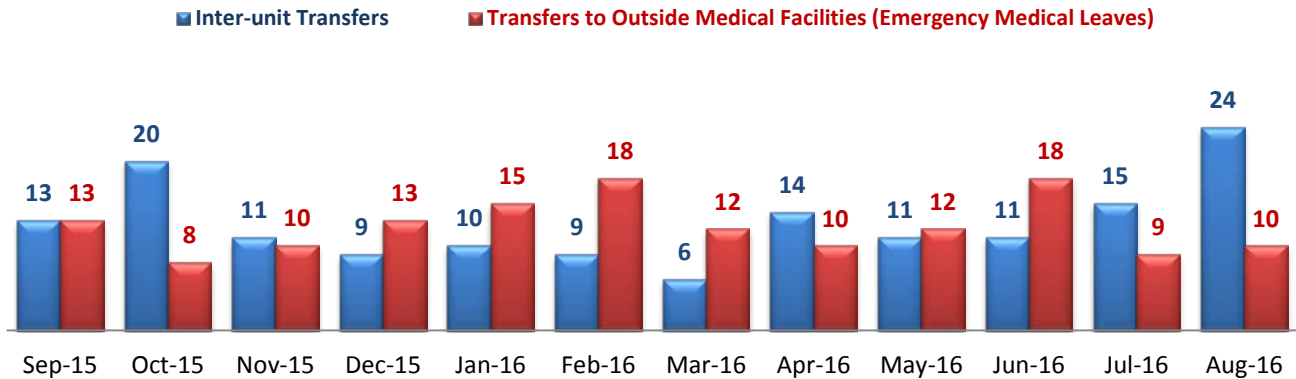
* Number of discharges from SEH inpatient program, including transfers from inpatient to forensic outpatient program.

3. Average Daily Census



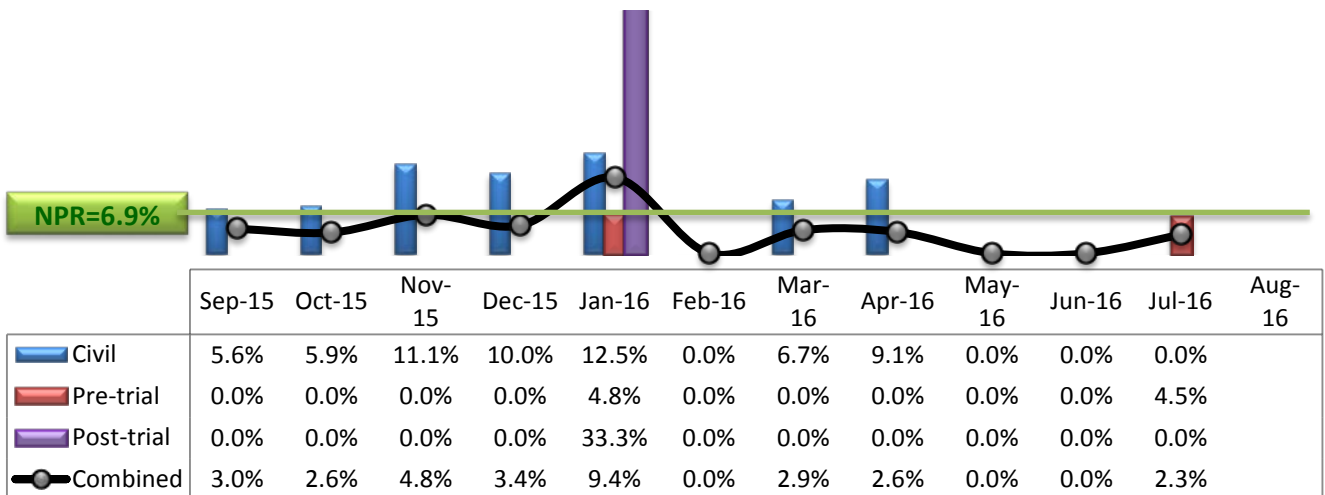
* Data above is the daily average number of individuals counted at 11:59 PM every day during each month.

4. Transfers



* Number of inter-unit transfers that occurred during month and number of emergency medical leaves that were initiated during month.

5. 30-Day Readmission Rate



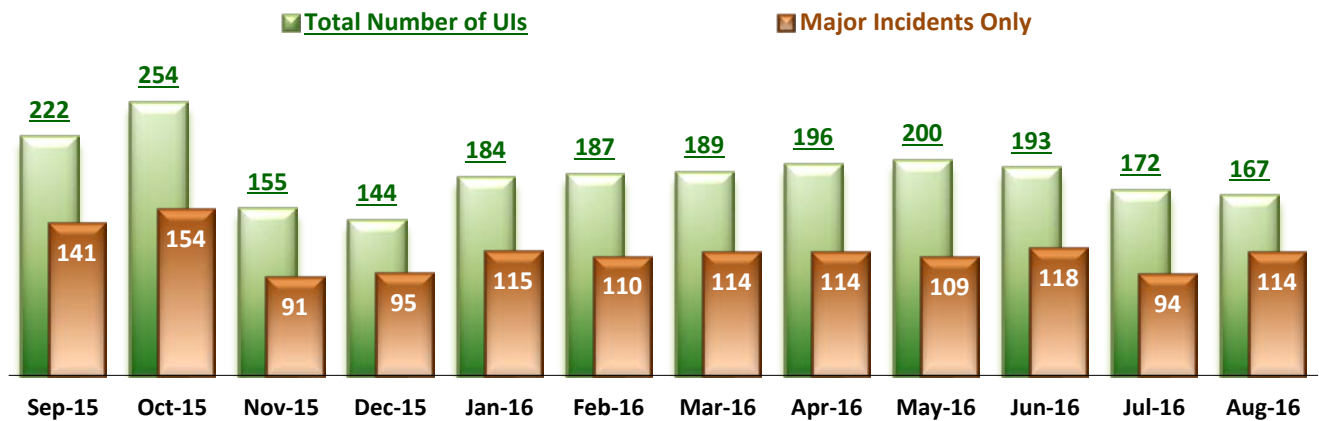
* Percent of discharges that returned to SEH within 30 days of discharges. It does not include those who may have been re-hospitalized at another psychiatric facility. This measure requires 30-day observation following discharge.

** The post-trial denominators (discharges) per month range only between one and six, making the monthly re-admission rate high when there is any. For example, in December 2014, there was only one post-trial discharge, which was readmitted within 30 days. Thus, the 30-day readmission rate for post-trial discharge for this month is 100%.

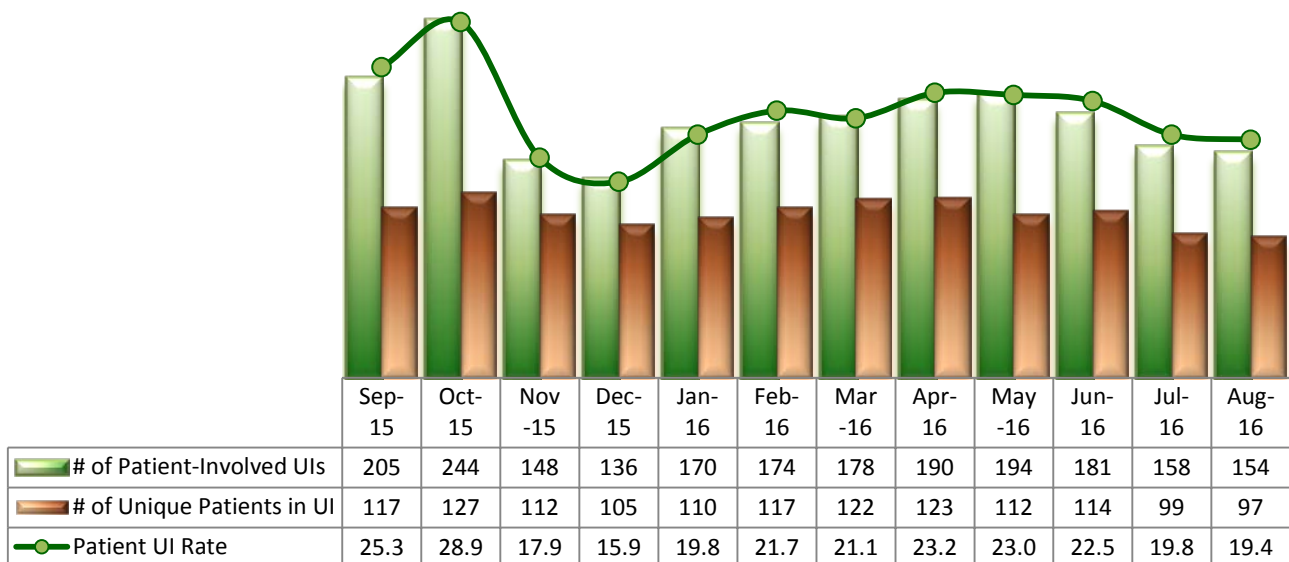
Key Trends: Unusual Incidents (6~17)

- The steady decline in overall Unusual Incidents (UI) continued through August. For the last 3 months, UIs have dropped from 200 to 167, a 17% decline. However, the actual number and percentage of major UIs have increased in August, rising from 94 (55%) in July to 114 (68%) this month.
- The most frequently occurring UIs were Physical Assaults (56); Aggressive Behavior (51); Emergency Involuntary Medications (53); Psychiatric Emergency (31); Physical Injury (30). Less than half (20) of the psychiatric emergency UIs also involved physical assaults.
- Normally, as admissions increases, the patient UI rate decreases. However, the trend did not follow suit this months as admissions rose by 5 but the patient UI rate decreased by 0.4%.
- High severity UIs ticked up slightly this month as they increased from 22 to 25, but it is still below the average (27) for the last 12 months though. Just about half of the high severity incidents (12) involved physical assaults.
- Patient Injury rate rose to its highest level since November 2015, as it climbed to 0.25 from just 0.13 last month.

6. Unusual Incidents

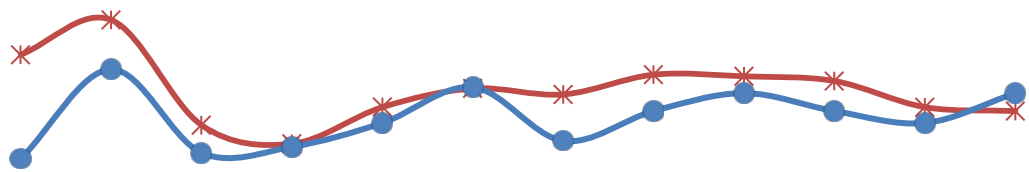


7. Patient-Involved Unusual Incidents



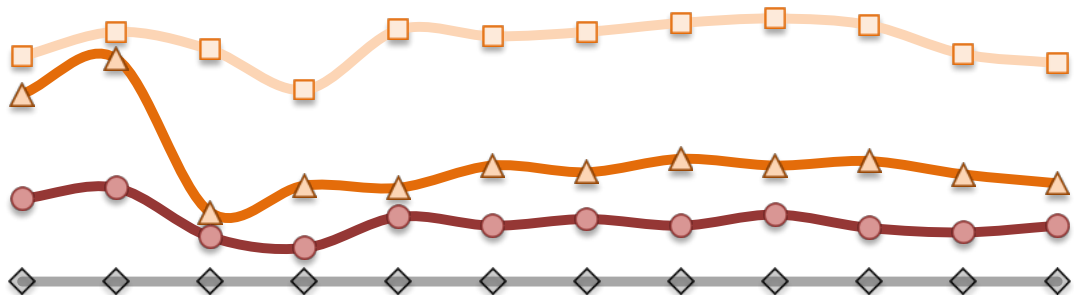
* The patient UI rate is the number of patient-involved unusual incidents reported for every 1000 inpatient days.

8. Admissions vs. Patient UI Rate



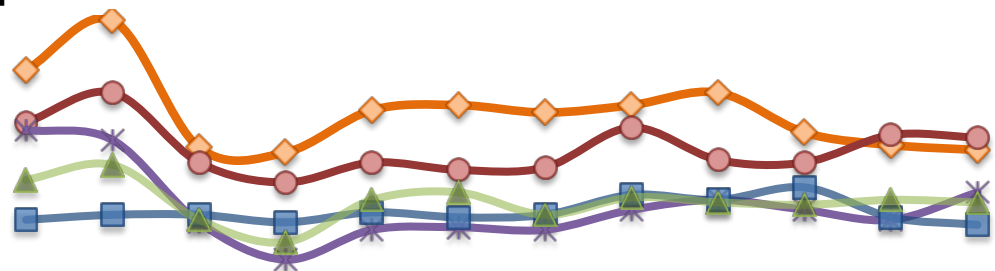
	Sep-15	Oct-15	Nov-15	Dec-15	Jan-16	Feb-16	Mar-16	Apr-16	May-16	Jun-16	Jul-16	Aug-16
—*— Patient UI Rate	25.3	28.9	17.9	15.9	19.8	21.7	21.1	23.2	23.0	22.5	19.8	19.4
—●— Admission	27	42	28	29	33	39	30	35	38	35	33	38

9. Unusual Incidents by Severity



	Sep-15	Oct-15	Nov-15	Dec-15	Jan-16	Feb-16	Mar-16	Apr-16	May-16	Jun-16	Jul-16	Aug-16
□ 1) Low	101	112	104	86	113	110	112	116	118	115	102	98
△ 2) Medium	84	100	31	43	42	52	49	55	52	54	48	44
● 3) High	37	42	20	15	29	25	28	25	30	24	22	25
◇ 4) Catstrp	0	0	0	0	0	0	0	0	0	0	0	0
Total UI	222	254	155	144	184	187	189	196	200	193	172	167

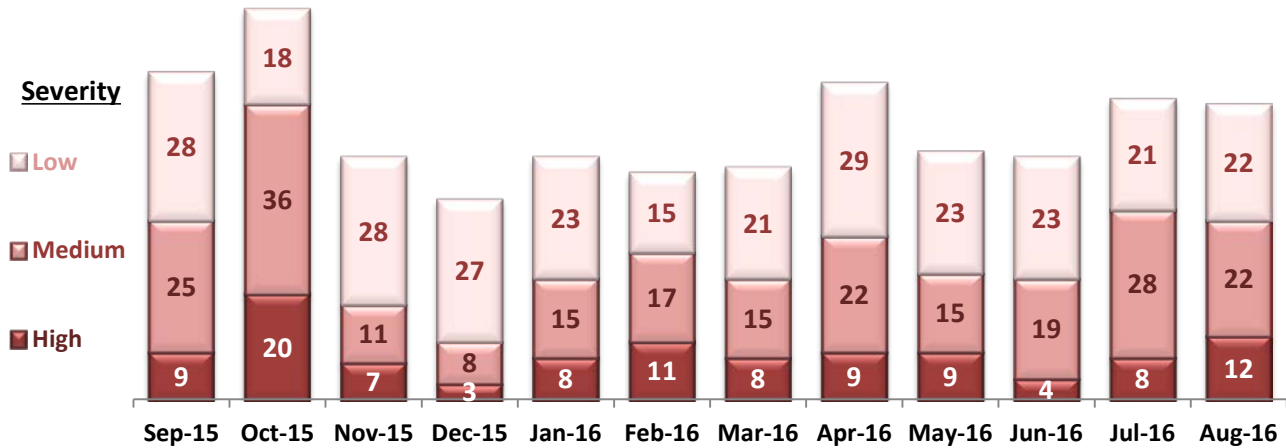
10. Selected Types of Incidents



	Sep-15	Oct-15	Nov-15	Dec-15	Jan-16	Feb-16	Mar-16	Apr-16	May-16	Jun-16	Jul-16	Aug-16
◆ Aggressive Behavior	83	103	52	50	67	69	66	69	74	58	53	51
● Physical Assault	62	74	46	38	46	43	44	60	47	46	57	56
* Pysch Emerg.	59	55	22	7	19	20	19	27	31	27	23	34
■ Fall	23	25	25	22	26	24	25	33	31	36	24	21
▲ Injury	39	45	23	14	31	34	25	32	30	29	31	30

* These are incident types that are frequently reported. Some incidents may be counted in multiple categories. For example, a physical assault incident that accompanied psychiatric emergency and injury is counted under psychiatric emergency and injury as well as under physical assault. Injury is broadly defined to include any type of injuries regardless of the cause or severity level.

11. Physical Assaults by Severity



* Any physical assault that accompanies a code 13 or results in extensive injury needing off-unit treatment or transfer to ER is considered to be high severity; any physical assault that causes a minor injury that can be treated on unit is considered to be medium severity; and physical assault events that result in no injury are considered to be low severity.

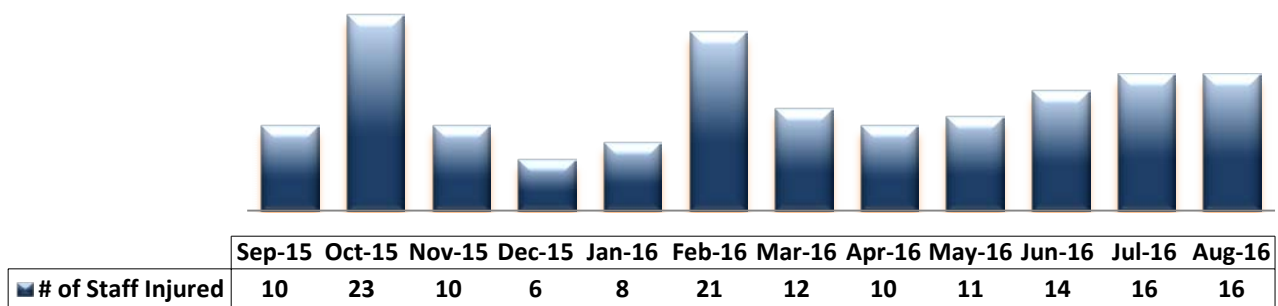
12. Patient Injuries



	Sep-15	Oct-15	Nov-15	Dec-15	Jan-16	Feb-16	Mar-16	Apr-16	May-16	Jun-16	Jul-16	Aug-16
Total Pts Injured	32	34	15	9	25	23	12	24	19	20	20	22
Major Pt Injuries*	3	1	3	1	0	1	2	2	1	0	1	2
Patient Injury Rate	0.37	0.12	0.36	0.12	0.00	0.12	0.24	0.24	0.12	0.00	0.13	0.25

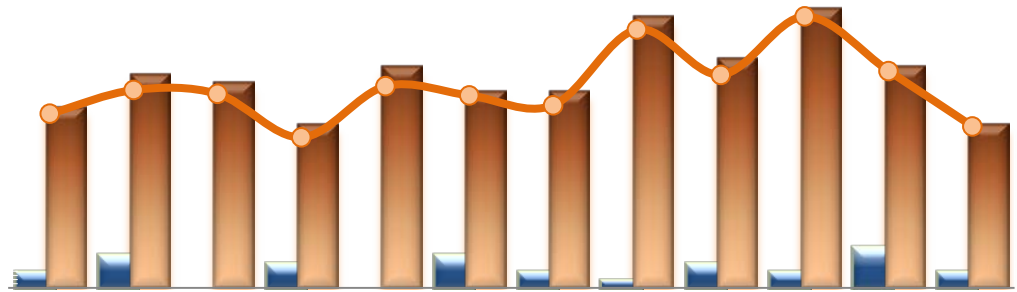
* Injury is broadly defined to include any type of injuries regardless of the cause or severity level. The total number of patients injured represents all of the reported injuries including minor injuries treated with first aid alone. However, the patient injury rate considers only the number of patient injuries that are required beyond first-aid level treatment based on the NRI definition and the patient injury rate is the number of 'major' patient injuries per every 1000 inpatient days

13. Staff Injuries



* Injury is broadly defined to include any type of injuries regardless of the cause or severity level. The total number of staff injured represents all of the reported staff injuries including minor injuries treated with first aid alone.

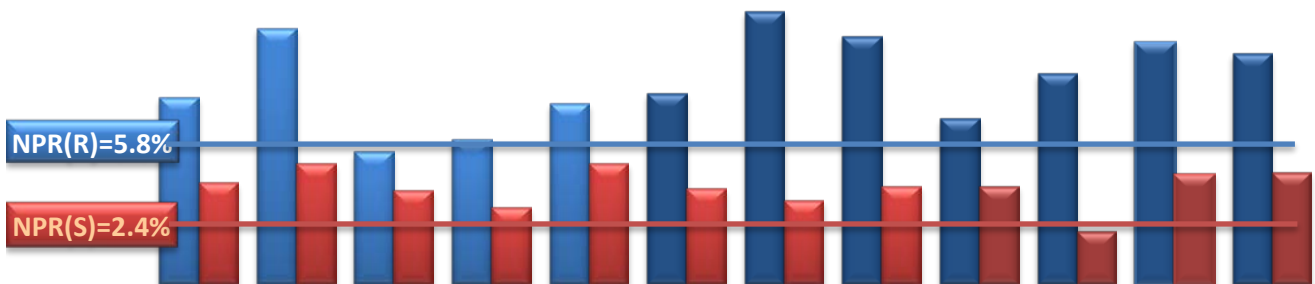
14. Patient and Staff Falls



	Sep-15	Oct-15	Nov-15	Dec-15	Jan-16	Feb-16	Mar-16	Apr-16	May-16	Jun-16	Jul-16	Aug-16
Total Staff who Fell	2	4	0	3	0	4	2	1	3	2	5	2
Total Patients who Fell	22	26	25	20	27	24	24	33	28	34	27	20
Patient Fall Rate	2.71	3.08	3.02	2.34	3.14	3.00	2.84	4.02	3.32	4.23	3.38	2.51

* The patient fall rate is the number of patient falls per every 1000 inpatient days.

15. Percent of Patients Restrained or Secluded



	Sep-15	Oct-15	Nov-15	Dec-15	Jan-16	Feb-16	Mar-16	Apr-16	May-16	Jun-16	Jul-16	Aug-16
Restraint	7.9%	10.9%	5.6%	6.2%	7.7%	8.1%	11.6%	10.6%	7.1%	9.0%	10.3%	9.8%
Seclusion	4.3%	5.1%	4.0%	3.2%	5.1%	4.1%	3.5%	4.2%	4.2%	2.2%	4.7%	4.7%

* Percent of unique patients who were restrained at least once and percent of unique patients who were secluded at least once. The denominator includes all individuals who were served in care 1+ day during month.

** Prior to April 2015, the Hospital tracked only mechanical restraint events, but the Hospital's restraint policy has changed to include any physical holds. The sudden increase of the restraint data as of April 2015 reflects this change.

16. Restraint Hours Rate & Seclusion Hours Rate



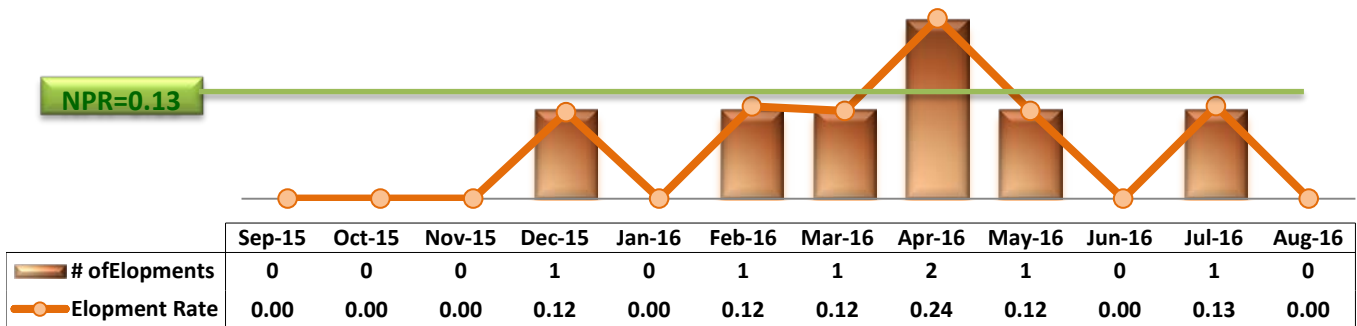
A bar chart showing the Restraint Hours Rate (blue bars) and Seclusion Hours Rate (red bars) from September 2015 to August 2016. The x-axis represents months from Sep-15 to Aug-16.

	Sep-15	Oct-15	Nov-15	Dec-15	Jan-16	Feb-16	Mar-16	Apr-16	May-16	Jun-16	Jul-16	Aug-16
Restraint	0.031	0.086	0.052	0.032	0.038	0.123	0.142	0.207	0.104	0.218	0.154	0.100
Seclusion	0.260	0.281	0.043	0.047	0.099	0.136	0.093	0.196	0.137	0.078	0.125	0.121

* Restraint/Seclusion Hours Rate: Number of hours spent in restraint/seclusion for every 1000 inpatient hours.

** The duration of each physical hold event is counted as 1 minute as a physical hold is ordered and used only as a temporary intervention that lasts less than a minute to break up any physical conflicts or to administer emergency medications.

17. Elopements

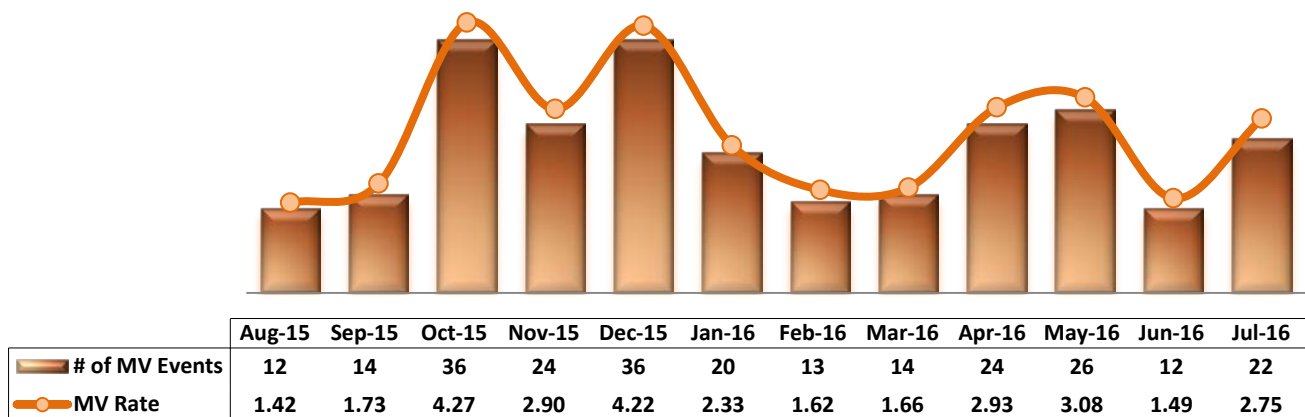


* Data herein counts the number of unauthorized leaves for any duration that were initiated during month and were recorded in Avatar. The elopement rate is the number of those unauthorized leaves that occurred for every 1000 inpatient days.

Key Trends: Medication Documentation, MV, ADR, and STAT (18~22)

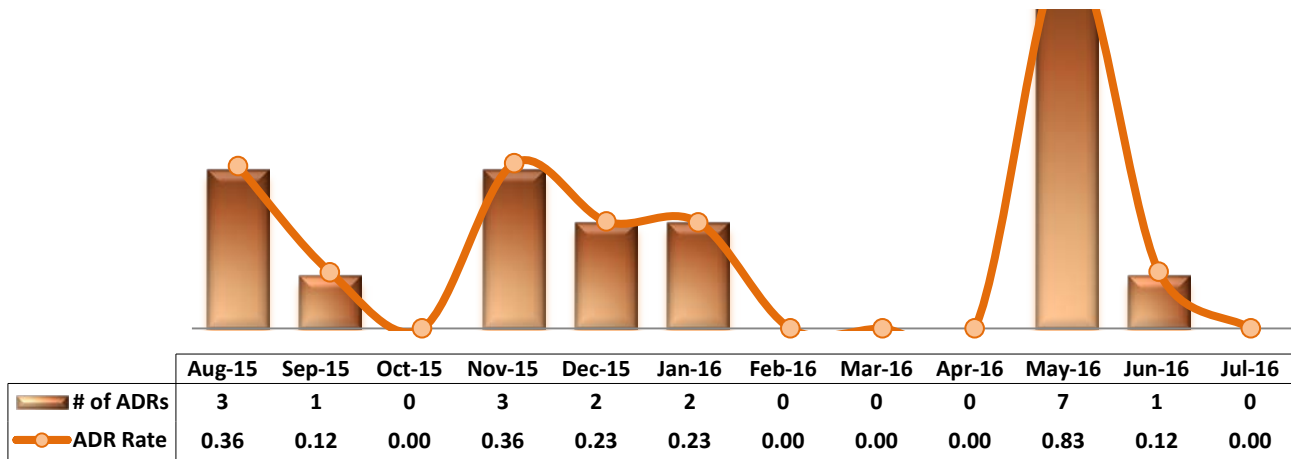
- Medication variance and ADR reports could not be reconciled this month we have had personnel changes and could not meet in time for the report.
- Since reaching an apex of 0.93% in June, the percentage of missing medical administration documentation has been on the decline and falling back to “normal” levels. Over the last 12 months, missing medical administration documentation has averaged 0.54% while August’s total reveals a rate of 0.49%.
- STAT orders fell 25% in August in direct correlation with a reduction in average daily census. Thirty-five (35) individuals had a least 1 STAT order during the month. Twenty-eight of 301 individuals (9%) served in July received at least 1 STAT order. The 165 STAT orders recorded in July were third highest in the last 12 months with the most (251) occurring in October 2015 followed by 182 a month prior in September.
- The highest number of STAT events for a single IIC in July was 14, which included 26 orders.

18. Reported Medication Variance Events



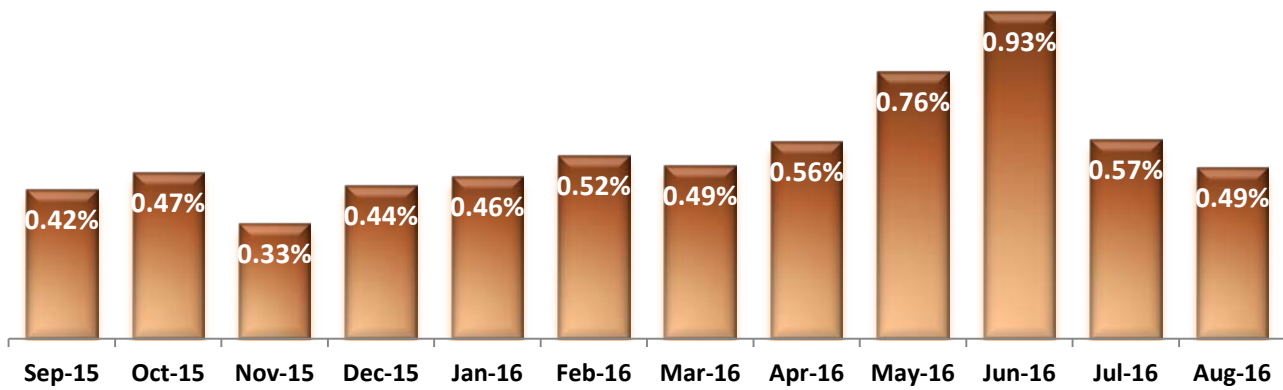
* MV Rate: Number of reported medication variance events that occurred for every 1000 inpatient days.

19. Reported Adverse Drug Reactions

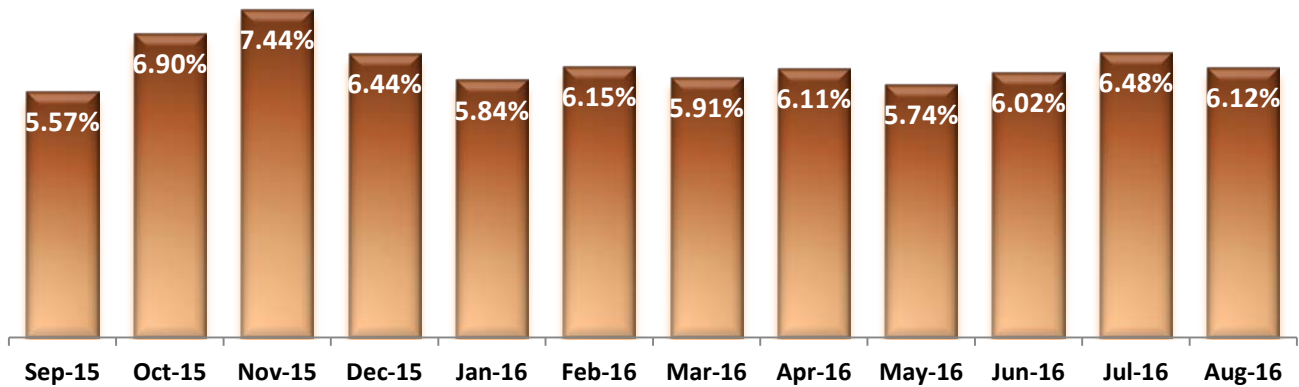


* ADR Rate: Number of reported adverse drug reaction events that occurred for every 1000 inpatient days.

20. Percent of Missing Documentation on Med-Administration

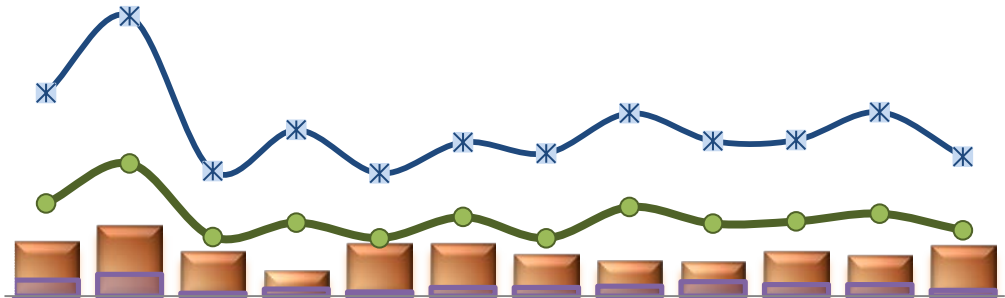


21. Medication Refusal Rate*



* Medication Refusal Rate: the number of refused medication doses divided by the total number of doses scheduled for administration.

22. Number of STAT Events and Individuals Involved

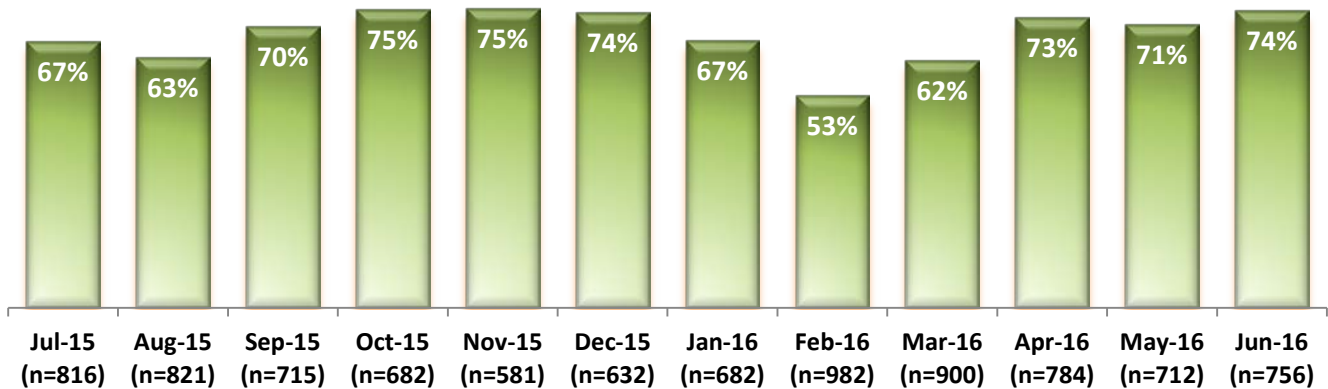


	Sep-15	Oct-15	Nov-15	Dec-15	Jan-16	Feb-16	Mar-16	Apr-16	May-16	Jun-16	Jul-16	Aug-16
IICs w/ >=1 STAT	38	49	31	18	37	37	29	25	24	31	28	35
IICs w/ >=3 STAT Events	11	15	2	5	3	6	6	7	10	8	8	4
Total STAT Events	83	119	53	66	52	71	52	80	65	67	74	59
Total STAT Orders	182	251	112	149	110	138	128	164	139	140	165	125

Key Trends: Environment of Care (23)

- Due to technical issues with the database that stores the data for SiteFm work assignments, there is no data to report for the month of August. The issue has been solved, however, and new data will be available for September.

23. Percentage of SiteFM Work Orders Completed within 3 Days

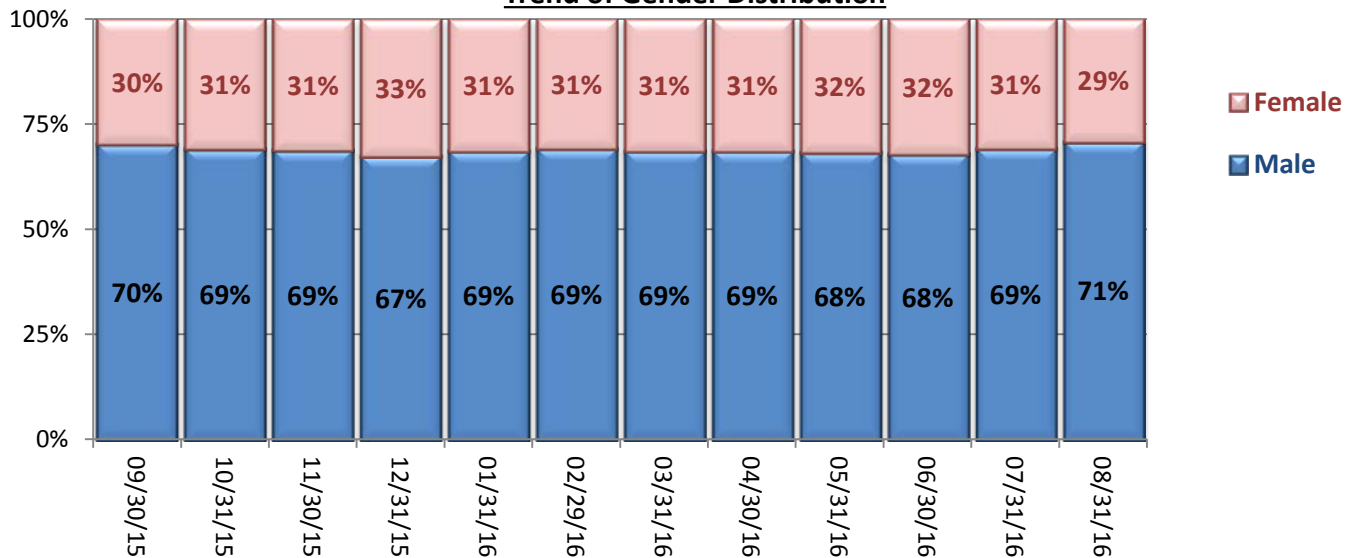


Key Trends: Demographics, Legal Status, and Length of Stay (24-25)

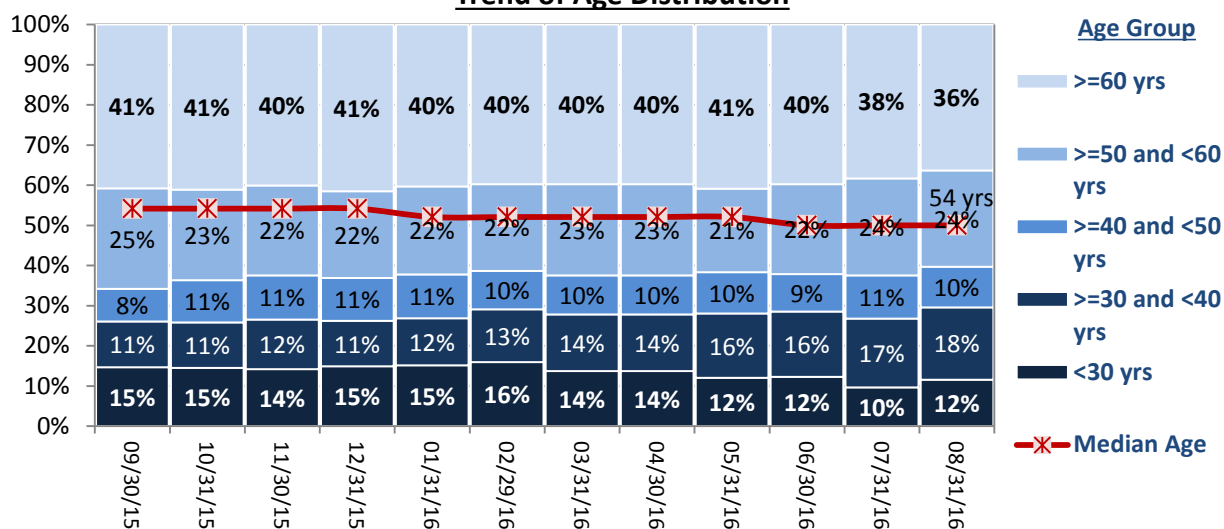
- Although the gender distribution has almost always been near a 70%-30% male-to-female split, it is very rare that the male population is over 70% for any given month. The 71% male distribution in August represents only the second time the male proportion has been above 69% since the measurement has been available.
- On a month-to-month basis, the age distribution normally does not vary much. However, over the last 3 months, the amount of individuals served who are over 60 years of age has been declining subtly, but steadily. Since May, that age range has fall from 41% to 36%.
- Almost half (47%) of the individuals on roll at the end of August have had a length of stay less than 1 year. This has been the trend for at least the last 2 years but has fluctuated more than the other length of stay intervals.
- For the 3rd straight month, the average Length of Stay (LOS) and median LOS of those individuals with a civil legal status continued to increase. The same trend can be seen with those identified with a post-trial legal status but the average LOS of pre-trial individuals has remained relatively low since June.

24. Demographics

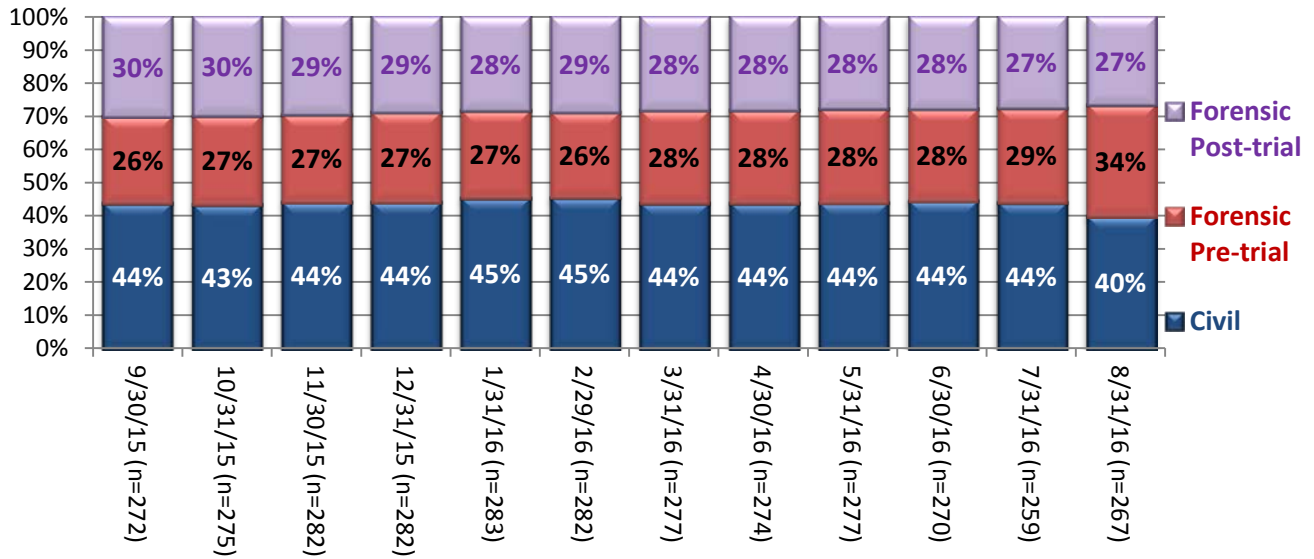
Trend of Gender Distribution



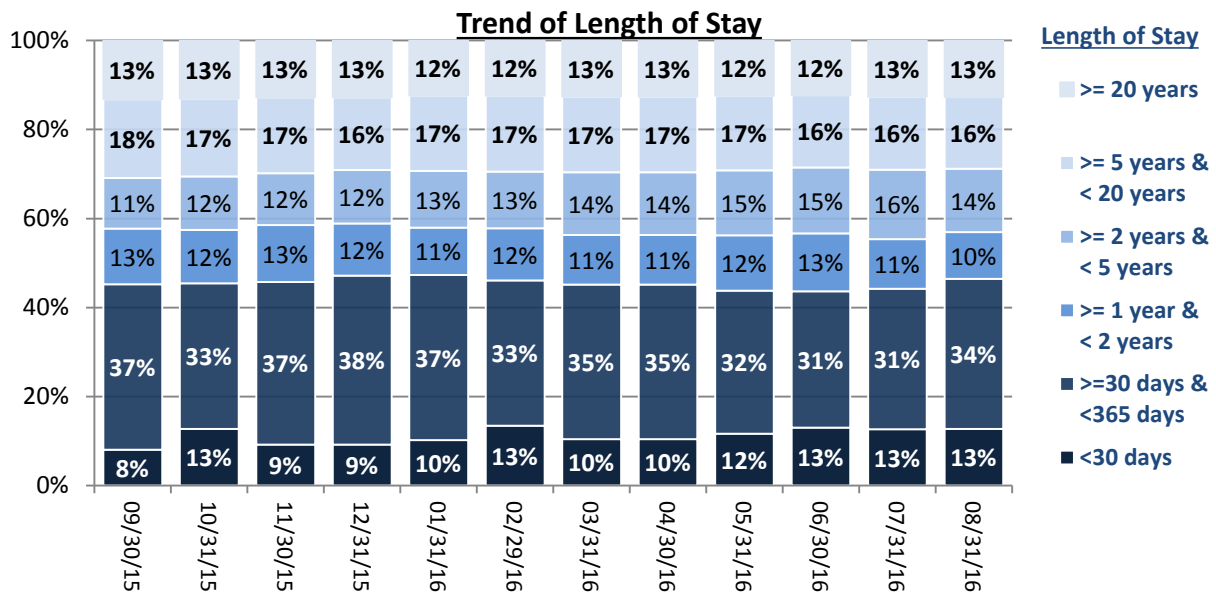
Trend of Age Distribution



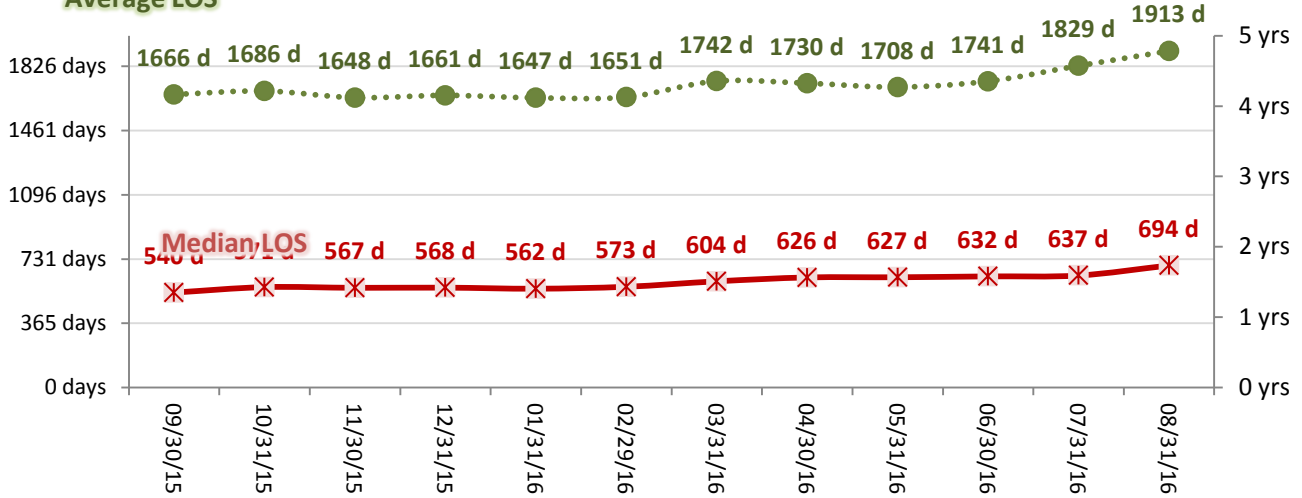
Trend of Legal Status Distribution



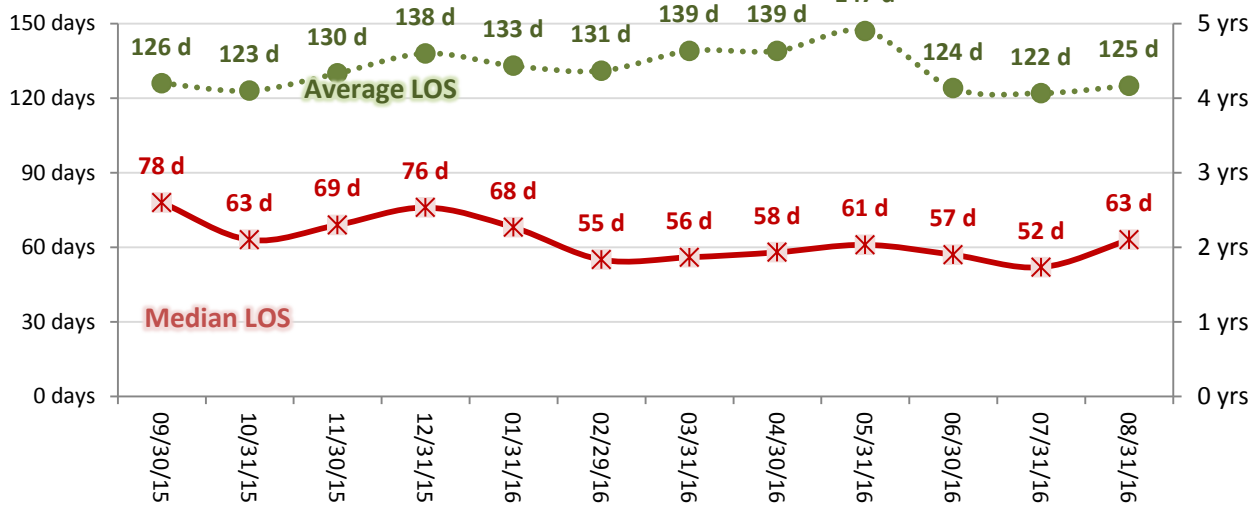
25. Length of Stay



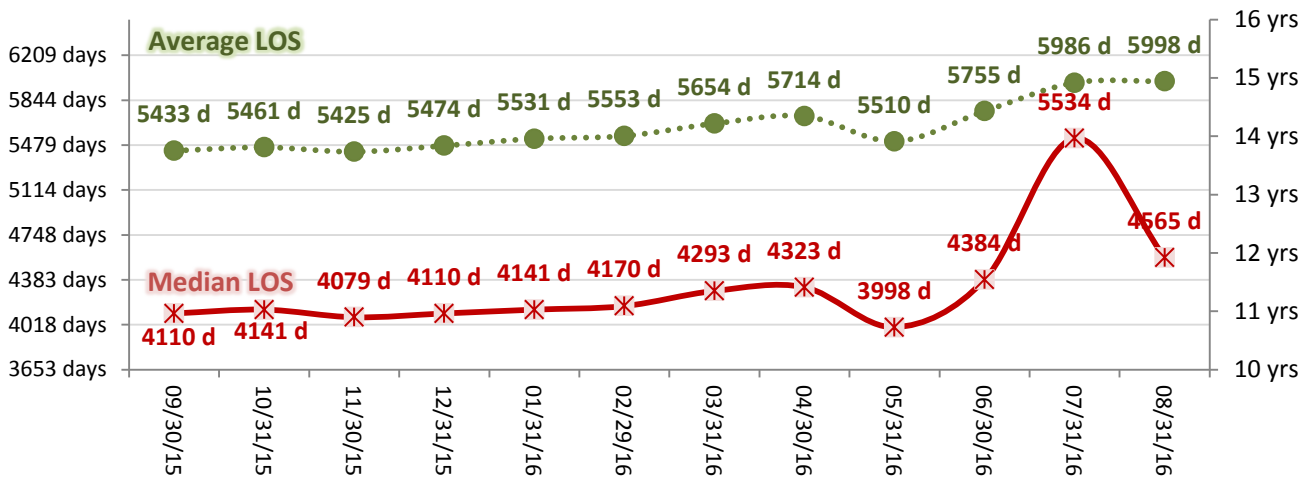
Average LOS Length of Stay for Individuals in Care with Civil Legal Status



Length of Stay for Individuals in Care with Pre-trial Legal Status



Length of Stay for Individuals in Care with Post-trial Legal Status



Performance Related Information for Staff & Managers

1. Census, Admissions, Discharges & Transfers

Data Source: Avatar

Updated as of 09/20/16

Category	Sep-15	Oct-15	Nov-15	Dec-15	Jan-16	Feb-16	Mar-16	Apr-16	May-16	Jun-16	Jul-16	Aug-16	Monthly Average	Total (12mths)	Figure	
Admissions	Civil	13	16	11	9	6	12	6	9	11	8	8	7	10	116	Figure 1
	Pre-trial	14	25	16	17	25	25	23	25	24	26	25	29	23	274	
	Post-trial	0	1	1	3	2	2	1	1	3	1	0	2	1	17	
	Total	27	42	28	29	33	39	30	35	38	35	33	38	34	407	
Discharges	Civil	18	17	9	10	8	15	15	11	8	18	18	12	13	159	Figure 2
	Pre-trial	14	21	12	14	21	24	17	24	25	21	22	16	19	231	
	Post-trial	1	1	0	5	3	1	3	3	2	4	3	2	2	28	
	Total	33	39	21	29	32	40	35	38	35	43	43	30	35	418	
Net Increase During Month	Civil	-5	-1	2	-1	-2	-3	-9	-2	3	-10	-10	-5		-43	
	Pre-trial	0	4	4	3	4	1	6	1	-1	5	3	13		43	
	Post-trial	-1	0	1	-2	-1	1	-2	-2	1	-3	-3	0		-11	
	Total	-6	3	7	0	1	-1	-5	-3	3	-8	-10	8		-11	
All Individuals on Roll at End of Month	272	275	282	282	283	282	277	274	277	270	259	267	275			
a. Present on Unit	267	268	278	277	282	273	271	267	274	265	258	263	270			
b. On AL	5	7	4	4	1	9	6	6	3	5	0	3	4			
c. On UL	0	0	0	1	0	0	0	1	0	0	1	1	0			
All Individuals on Roll: Daily Average during Month*	275	277	280	280	282	282	279	279	276	273	263	260	275			
a. Present on Unit	270	272	276	275	277	276	272	273	272	268	258	257	271		Figure 3	
b. On AL	5	5	4	4	4	6	7	6	4	5	4	2	3.8			
c. On UL	0	0	0	1	0	0	0	0	0	0	1	1	0.27			
Patient Days**	8114	8439	8277	8537	8599	8009	8436	8200	8437	8043	7994	7956	8253	99041		
Inter-Unit Transfers during Month	13	20	11	9	10	9	6	14	11	11	15	24	13	153	Figure 4	
Medical Leaves Initiated during Month	Emergency	13	8	10	13	15	18	12	10	12	18	9	10	12	148	
	Non-Emer	69	86	72	72	54	68	66	66	46	72	42	58	64	771	
	Total	82	94	82	85	69	86	78	76	58	90	51	68	77	919	
Non-Medical Leaves Initiated during Month	290	356	341	390	298	364	389	316	284	287	214	182	309	3711		
UL Initiated during Month	0	0	0	1	0	1	1	2	1	0	2	0	1	8		
Total Unique Patients Served during Month	302	312	302	308	312	320	310	312	312	312	301	295	308			
30 Day Readmission ***	Civil	1	1	1	1	1	0	1	1	0	0	0		1	7	
	Pre-trial	0	0	0	0	1	0	0	0	0	0	1		0	2	
	Post-trial	0	0	0	0	1	0	0	0	0	0	0		0	1	
	Total	1	1	1	1	3	0	1	1	0	0	1		1	10	

* This is the average number of individuals served on a given day for the respective month. Due to rounding from average calculation, numbers from its subcategories a, b, & c may not add up to the total number on this row.

** It counts the number of patients who are present on the unit and excludes those on authorized or unauthorized leave at 11:59pm on a given day.

*** Number of patients returning within 30 days of discharges that occurred during month.

Performance Related Information for Staff & Managers

2. Key Performance Indicators

Data Source: UI DB, MV DB, ADR DB, Restraint/Seclusion Log, and Avatar

Updated as of 08/08/16

Category	Sep-15	Oct-15	Nov-15	Dec-15	Jan-16	Feb-16	Mar-16	Apr-16	May-16	Jun-16	Jul-16	Aug-16	Monthly Average	NPR* (Jun-13)	Figure
30 Day Readmit (Discharge Cohort)**	Civil	5.6%	5.9%	11.1%	10.0%	12.5%	0.0%	6.7%	9.1%	0.0%	0.0%	0.0%	4.8%		Figure 5
	Pre-trial	0.0%	0.0%	0.0%	0.0%	4.8%	0.0%	0.0%	0.0%	0.0%	0.0%	4.5%	0.9%		
	Post-trial	0.0%	0.0%	N/A	0.0%	33.3%	0.0%	0.0%	0.0%	0.0%	0.0%	0.0%	3.9%		
	Combined	3.0%	2.6%	4.8%	3.4%	9.4%	0.0%	2.9%	2.6%	0.0%	0.0%	2.3%	2.6%	6.9%	
Number of Unusual Incidents*	222	254	155	144	184	187	189	196	200	193	172	167	189		Figure 6
Patient Unusual Incident Rate	25.3	28.9	17.9	15.9	19.8	21.7	21.1	23.2	23.0	22.5	19.8	19.4	21.5		Figure 7
UI by Severity	Catastrophe	0	0	0	0	0	0	0	0	0	0	0	0		Figure 9
	High	37	42	20	15	29	25	28	25	30	24	22	25	27	
	Medium	84	100	31	43	42	52	49	55	52	54	48	44	55	
	Low	101	112	104	86	113	110	112	116	118	115	102	98	107	
Physical Assault Incident Rate	7.6	8.8	5.6	4.5	5.3	5.4	5.2	7.3	5.6	5.7	7.1	7.0	6.2		
Selected Types of Incidents	Physical Assault	62	74	46	38	46	43	44	60	47	46	57	56	52	Figure 10
	Aggressive Behav.	83	103	52	50	67	69	66	69	74	58	53	51	66	
	Psych Emergency	59	55	22	7	19	20	19	27	31	27	23	34	29	
	Fall	23	25	25	22	26	24	25	33	31	36	24	21	26	
	Injury	39	45	23	14	31	34	25	32	30	29	31	30	30	
Physical Assaults by Severity	High	9	20	7	3	8	11	8	9	9	4	8	12	13	Figure 11
	Medium	25	36	11	8	15	17	15	22	15	19	28	22	19	
	Low	28	18	28	27	23	15	21	29	23	23	21	22	23	
Patient Injury Rate***	0.37	0.12	0.36	0.12	0.00	0.12	0.24	0.24	0.12	0.00	0.13	0.25	0.17	0.38	Figure 12
Patients with Major Injuries***	3	1	3	1	0	1	2	2	1	0	1	2	1		
Total Patients Injured***	32	34	15	9	25	23	12	24	19	20	20	22	21		
Total Staff Injured***	10	23	10	6	8	21	12	10	11	14	16	16	13		Figure 13
Patient Fall Rate	2.71	3.08	3.02	2.34	3.14	3.00	2.84	4.02	3.32	4.23	3.38	2.51	3.13		Figure 14
Total Patients who Fell	22	26	25	20	27	24	24	33	28	34	27	20	26		
Total Staff who Fell	2	4	0	3	0	4	2	1	3	2	5	2	2		
Percent of Patients Restrained	7.9%	10.9%	5.6%	6.2%	7.7%	8.1%	11.6%	10.6%	7.1%	9.0%	10.3%	9.8%	1.8%	5.8%	Figure 15
Percent of Patients Secluded	4.3%	5.1%	4.0%	3.2%	5.1%	4.1%	3.5%	4.2%	4.2%	2.2%	4.7%	4.7%	4.1%	2.4%	
Restraint Hours Rate	0.031	0.086	0.052	0.032	0.038	0.123	0.142	0.207	0.104	0.218	0.154	0.100	0.106	0.71	Figure 16
Seclusion Hours Rate	0.260	0.281	0.043	0.047	0.099	0.136	0.093	0.196	0.137	0.078	0.125	0.121	0.134	0.44	
Elopement Rate	0.00	0.00	0.00	0.12	0.00	0.12	0.12	0.24	0.12	0.00	0.13	0.00	0.08	0.13	Figure 17
Medication Variance Rate	1.73	4.27	2.90	4.22	2.33	1.62	1.66	2.93	3.08	1.49	2.75	0.00	2.43		Figure 18
Adverse Drug Reaction Rate	0.12	0.00	0.36	0.23	0.23	0.00	0.00	0.00	0.83	0.12	0.00	0.00	0.16		Figure 19
Missing Med-Admin Documentation	0.42%	0.47%	0.33%	0.44%	0.46%	0.52%	0.49%	0.56%	0.76%	0.93%	0.57%	0.49%	0.54%		Figure 20
Percent of Medication Refusal	5.57%	6.90%	7.44%	6.44%	5.84%	6.15%	5.91%	6.11%	5.74%	6.02%	6.48%	6.12%	6.22%		Figure 21
SiteFM Work Orders Completed within 3 days	70%	75%	75%	74%	67%	53%	62%	73%	71%	74%			68%		Figure 23
Total SiteFM Work Orders	503	509	435	466	456	522	557	569	505	562			508		
	715	682	581	632	682	982	900	784	712	756			743		

* National Public Rate, NASMHPD Research Institute, National Research Institute (NRI), Data as of June 2013, Published in November 2013.

** Percentage of patients returning within 30 days of discharges that occurred during month

*** Refer to the next page [UI & Medication]

Performance Related Information for Staff & Managers

3. Unusual Incident & Medication

Data Source: UI DB, MV DB, ADR DB, and Avatar

Updated as of 08/08/16

Category		Sep-15	Oct-15	Nov-15	Dec-15	Jan-16	Feb-16	Mar-16	Apr-16	May-16	Jun-16	Jul-16	Aug-16	Monthly Average	Total (12mths)	NPR* (Jun-13)
Unusual Incidents (excluding MV)**	Total UIs	222	254	155	144	184	187	189	196	200	193	172	167	189	2263	
	Major UIs Only	141	154	91	95	115	110	114	114	109	118	94	114	114	1369	
	Pt Involved UI Only	205	244	148	136	170	174	178	190	194	181	158	154	178	2132	
	Patient UI Rate	25.3	28.9	17.9	15.9	19.8	21.7	21.1	23.2	23.0	22.5	19.8	19.4		21.5	
	Unique Pts Involved in UI	117	127	112	105	110	117	122	123	112	114	99	97	113	1355	
Selected Types of Incidents	Physical Assault	62	74	46	38	46	43	44	60	47	46	57	56	52	619	
	Aggressive Behavior	83	103	52	50	67	69	66	69	74	58	53	51	66	795	
	Psych Emergency	59	55	22	7	19	20	19	27	31	27	23	34	29	343	
	Fall	23	25	25	22	26	24	25	33	31	36	24	21	26	315	
	Injury	39	45	23	14	31	34	25	32	30	29	31	30	30	363	
Physical Assault Rate		7.6	8.8	5.6	4.5	5.3	5.4	5.2	7.3	5.6	5.7	7.1	7.0		6.2	
UI by Severity	Catastrophe	0	0	0	0	0	0	0	0	0	0	0	0	0	0	
	High	37	42	20	15	29	25	28	25	30	24	22	25	27	322	
	Medium	84	100	31	43	42	52	49	55	52	54	48	44	55	654	
	Low	101	112	104	86	113	110	112	116	118	115	102	98	107	1287	
Physical Assaults by Severity	High	9	20	7	3	8	11	8	9	9	4	8	12	13	108	
	Medium	25	36	11	8	15	17	15	22	15	19	28	22	19	233	
	Low	28	18	28	27	23	15	21	29	23	23	21	22	23	278	
Total Patients who Fell		22	26	25	20	27	24	24	33	28	34	27	20	26	310	
Patient Fall Rate		2.71	3.08	3.02	2.34	3.14	3.00	2.84	4.02	3.32	4.23	3.38	2.51		3.13	
Total Staff who Fell		2	4	0	3	0	4	2	1	3	2	5	2	2	28	
Total Patients Injured***		32	34	15	9	25	23	12	24	19	20	20	22	21	255	
Patients with Major Injuries***		3	1	3	1	0	1	2	2	1	0	1	2	1	17	
Patient Injury Rate***		0.37	0.12	0.36	0.12	0.00	0.12	0.24	0.24	0.12	0.00	0.13	0.25		0.17	0.38
Total Staff Injured**		10	23	10	6	8	21	12	10	11	14	16	16	13		
Total UIs Documented in Avatar		0	0	0	1	0	1	1	2	1	0	1	0	1	8	
Elopement Rate		0.00	0.00	0.00	0.12	0.00	0.12	0.12	0.24	0.12	0.00	0.13	0.00		0.08	0.13
Med Variance (MV) Reports**		14	36	24	36	20	13	14	24	26	12	22		22	241	
MV Rate		1.73	4.27	2.90	4.22	2.33	1.62	1.66	2.93	3.08	1.49	2.75	0.00		2.43	
Adverse Drug Reactions Reports		1	0	3	2	2	0	0	0	7	1	0		1	16	
ADR Rate		0.12	0.00	0.36	0.23	0.23	0.00	0.00	0.00	0.83	0.12	0.00	0.00		0.16	
Total Med Administrations Scheduled		99956	105811	102613	105331	111076	103422	108400	105969	109074	104020	102274	99946		1257892	
Total Missing Documentations		423	500	336	459	513	539	533	593	827	967	580	487		6757	
Percent of Missing Documentation		0.42%	0.47%	0.33%	0.44%	0.46%	0.52%	0.49%	0.56%	0.76%	0.93%	0.57%	0.49%		0.54%	
Total Medication Doses Refused		5572	7303	7635	6788	6487	6356	6403	6480	6260	6263	6625	6119		78291	
Percent of Medication Refusal		5.57%	6.90%	7.44%	6.44%	5.84%	6.15%	5.91%	6.11%	5.74%	6.02%	6.48%	6.12%		6.22%	
Total STAT Orders		182	251	112	149	110	138	128	164	139	140	165	125	150		Figure 22
Total STAT Events****		83	119	53	66	52	71	52	80	65	67	74	59	70		
Total Patients with 1+ STAT Events		38	49	31	18	37	37	29	25	24	31	28	35	32		
Total Patients with 3+ STAT Events		11	15	2	5	3	6	6	7	10	8	8	4	7		

* National Public Rate, NASMHPD Research Institute, National Research Institute (NRI), Data as of June 2013, Published in November 2013.

** Numbers may change if any additional UI report is made after the data run date from UI database (around the 15th of the following month); According to the revised UI policy as of November 4, 2013, a medication variance (MV) incident became no longer considered to be an unusual incident, and a medication or vital sign refusal incident is not longer an UI as of May 2014. UI data for the past 12 months in this report has been updated to reflect this change and reanalyzed in order to show the UI trend in consistent logic.

*** Injury is broadly defined to include any type of injuries regardless of the cause or severity level. The total number of patients injured represents all of the reported injuries including minor injuries treated with first aid alone. However, the patient injury rate considers only the number of patient injuries that required beyond first-aid level treatment based on the NRI definition and the patient injury rate is the number of 'major' patient injuries per every 1000 inpatient days

**** One STAT event may involve more than one STAT order for the same patient. Any orders placed within 20 minute timeframe are considered to belong to one STAT event. All STAT order counts are from Pharmacy only...no LABS orders,etc...

Performance Related Information for Staff & Managers

4. Restraint & Seclusion

Data Source: Restraint/Seclusion Log and UI DB (for # of total events and patients) and Avatar (for patient days/hours)

Updated as of 08/08/16

Category		Sep-15	Oct-15	Nov-15	Dec-15	Jan-16	Feb-16	Mar-16	Apr-16	May-16	Jun-16	Jul-16	Aug-16	Monthly Average	Total (12mths)	NPR* (Jun-13)
Number of Restraint Events	Mechanical	3	8	1	3	4	10	10	10	7	22	21	10	9.1	109	
	Physical Hold	38	67	21	20	34	37	36	36	28	35	54	45	37.6		
	Total	41	75	22	23	38	47	46	46	35	57	75	55	46.7		
Number of Unique Patients Restrained	Mechanical	2	6	1	1	3	6	9	9	5	10	9	5	5.5		
	Physical Hold	22	28	16	18	21	20	27	24	17	18	22	24	21.4		
	Total	24	34	17	19	24	26	36	33	22	28	31	29	26.9		
Percentage of Patients Restrained**	Mechanical	0.7%	1.9%	0.3%	0.3%	1.0%	1.9%	2.9%	2.9%	1.6%	3.2%	3.0%	1.7%	1.8%		
	Physical Hold	7.3%	9.0%	5.3%	5.8%	6.7%	6.3%	8.7%	7.7%	5.4%	5.8%	7.3%	8.1%	7.0%		
	Total	7.9%	10.9%	5.6%	6.2%	7.7%	8.1%	11.6%	10.6%	7.1%	9.0%	10.3%	9.8%	8.7%		5.8%
Total Restraint Hours (h:mm)**	Mechanical	2:45	10:48	8:35	4:55	5:17	19:50	26:37	38:36	17:15	40:01	25:41	16:24	18:03	216:44	
	Physical Hold	3:22	6:35	1:42	1:35	2:36	3:43	2:08	2:11	3:47	2:04	3:47	2:37	3:00	6 mths	
	Total	6:07	17:23	10:17	6:30	7:53	23:33	28:45	40:47	21:02	42:05	29:28	19:01	21:04	6 mths	
Restraint Hours Rate**	Mechanical	0.014	0.053	0.043	0.024	0.026	0.103	0.131	0.196	0.085	0.207	0.134	0.086	0.091	12 mths	
	Physical Hold	0.017	0.033	0.009	0.008	0.013	0.019	0.011	0.011	0.019	0.011	0.020	0.014	0.015	6 mths	
	Total	0.031	0.086	0.052	0.032	0.038	0.123	0.142	0.207	0.104	0.218	0.154	0.100	0.106	6 mths	0.71
Number of Seclusion Events		37	40	13	12	22	17	16	22	21	13	20	24	21.4	257	
Number of Unique Patients Secluded		13	16	12	10	16	13	11	13	13	7	14	14	12.7		
Percentage of Patients Secluded		4.3%	5.1%	4.0%	3.2%	5.1%	4.1%	3.5%	4.2%	4.2%	2.2%	4.7%	4.7%	4.1%		2.4%
Total Seclusion Hours (h:mm)		50:35	56:52	8:33	9:38	20:22	26:08	18:52	38:38	27:49	15:05	23:55	23:05	26:37	319:32	
Seclusion Hours Rate		0.260	0.281	0.043	0.047	0.099	0.136	0.093	0.196	0.137	0.078	0.125	0.121		0.134	0.44

* National Public Rate, NASMHPD Research Institute, National Research Institute (NRI), Data as of June 2013, Published in November 2013.

** Restraint data prior to April 2015 includes only mechanical restraints. The Hospital's restraint policy has been revised to consider a physical hold a restraint and data as of April 2015 reflects this change. The duration of each physical hold event is counted as one (1) minute as a physical hold is ordered/used only as a temporary intervention that lasts less than a minute to break up any physical altercations or to administer emergency medications.

Performance Related Information for Staff & Managers

5. Major Unusual Incidents by Incident Location/Unit

Data Source: UI DB

Updated as of 08/08/16

Category		Sep-15	Oct-15	Nov-15	Dec-15	Jan-16	Feb-16	Mar-16	Apr-16	May-16	Jun-16	Jul-16	Aug-16	Monthly Average	Total (12mths)	Percent
Total Unusual Incidents		222	254	155	144	184	187	189	196	200	193	172	167	189	2263	100%
Incident Location	1A	16	6	6	13	9	11	8	7	8	5	7	13	9	109	5%
	1B	19	18	21	20	7	12	12	18	14	12	12	8	14	173	8%
	1C	12	15	12	14	13	14	16	14	32	17	19	22	17	200	9%
	1D	22	24	11	11	30	30	21	27	30	22	25	20	23	273	12%
	1E	29	21	9	6	14	8	10	5	7	24	22	9	14	164	7%
	1F	30	46	16	15	14	16	18	32	17	22	15	32	23	273	12%
	1G	12	17	13	15	20	13	14	26	12	18	14	6	15	180	8%
	2A	14	11	0	8	10	4	3	4	9	7	1	3	6	74	3%
	2B	4	1	4	2	3	9	8	6	6	4	2	2	4	51	2%
	2C	15	35	17	12	12	23	27	18	14	12	8	15	17	208	9%
	2D	14	27	16	7	20	12	14	14	18	20	15	17	16	194	9%
	TLC	17	26	23	8	19	17	22	13	21	18	16	13	18	213	9%
	Other	18	7	7	13	13	18	16	12	12	12	16	7	13	151	7%
Physical Assault		62	74	46	38	46	43	44	60	47	46	57	56	52	619	100%
Incident Location	1A	2	0	2	6	1	0	3	1	1	1	0	1	2	18	3%
	1B	1	1	5	3	0	0	2	4	2	1	2	2	2	23	4%
	1C	4	4	5	3	6	1	6	4	8	4	11	7	5	63	10%
	1D	6	9	3	3	7	14	7	10	7	5	9	7	7	87	14%
	1E	10	4	2	1	5	1	1	0	6	9	7	1	4	47	8%
	1F	17	28	5	6	6	3	5	15	2	8	8	18	10	121	20%
	1G	6	4	1	4	4	2	2	11	3	3	6	2	4	48	8%
	2A	2	1	0	0	1	1	0	1	1	0	0	0	1	7	1%
	2B	0	0	0	6	1	1	1	0	0	0	1	2	1	12	2%
	2C	4	11	9	2	8	8	4	5	4	2	2	6	5	65	11%
	2D	4	7	5	2	4	5	2	6	8	4	6	8	5	61	10%
	TLC - Intensive	2	5	7	1	1	6	5	3	4	7	3	1	4	45	7%
	TLC - Transitional	2	0	2	1	2	1	3	0	1	1	2	0	1	15	2%
	Other	2	0	0	0	0	0	3	0	0	0	1	0	1	7	1%

Performance Related Information for Staff & Managers

5. Major Unusual Incidents by Incident Location/Unit

Data Source: UI DB

Updated as of 08/08/16

Category		Sep-15	Oct-15	Nov-15	Dec-15	Jan-16	Feb-16	Mar-16	Apr-16	May-16	Jun-16	Jul-16	Aug-16	Monthly Average	Total (12mths)	Percent
Aggressive Behavior		83	103	52	50	67	69	66	69	74	58	53	51	66	795	128%
Incident Location	1A	1	4	1	4	0	4	1	1	0	0	1	2	2	19	3%
	1B	7	2	5	4	2	4	0	1	2	0	5	2	3	34	5%
	1C	3	4	5	9	3	8	8	9	14	8	3	9	7	83	13%
	1D	11	10	4	6	18	13	10	14	19	14	12	8	12	139	22%
	1E	14	15	4	3	5	5	1	1	1	2	8	3	5	62	10%
	1F	9	12	4	6	3	6	9	12	6	10	6	9	8	92	15%
	1G	3	8	6	5	8	5	4	5	3	7	3	1	5	58	9%
	2A	10	7	0	3	3	2	0	2	4	1	1	2	3	35	6%
	2B	0	0	0	0	2	2	1	0	3	0	1	0	1	9	1%
	2C	6	17	2	1	7	8	18	12	7	5	1	6	8	90	15%
	2D	8	15	7	3	10	2	6	4	6	5	4	5	6	75	12%
	TLC - Intensive	4	5	8	2	0	5	4	3	0	2	4	0	3	37	6%
	TLC - Transitional	4	2	4	1	4	0	4	3	7	4	1	2	3	36	6%
	Other	3	2	2	3	2	5	0	2	2	0	3	2	2	26	4%
Psych Emergency		59	55	22	7	19	20	19	27	31	27	23	34	29	343	55%
Incident Location	1A	0	1	0	0	0	0	0	0	0	0	0	0	0	1	0%
	1B	4	3	1	0	0	0	0	0	0	0	0	0	1	8	1%
	1C	2	2	2	1	2	0	3	2	7	6	3	8	3	38	6%
	1D	9	12	7	3	10	12	7	4	8	7	4	3	7	86	14%
	1E	15	7	1	1	2	0	1	0	3	6	7	1	4	44	7%
	1F	14	13	3	0	2	3	2	15	2	3	5	14	6	76	12%
	1G	3	2	2	1	1	1	1	1	0	1	1	0	1	14	2%
	2A	5	5	0	0	0	0	0	0	0	0	0	0	1	10	2%
	2B	0	0	0	0	1	0	0	0	1	0	1	1	0	4	1%
	2C	3	5	2	1	1	2	4	3	1	2	1	4	2	29	5%
	2D	1	2	2	0	0	0	0	0	4	1	0	3	1	13	2%
	TLC - Intensive	1	2	1	0	0	1	0	1	2	1	0	0	1	9	1%
	TLC - Transitional	0	1	1	0	0	0	1	1	2	0	1	0	1	7	1%
	Other	2	0	0	0	0	1	0	0	1	0	0	0	0	4	1%

Performance Related Information for Staff & Managers

5. Major Unusual Incidents by Incident Location/Unit

Data Source: UI DB

Updated as of 08/08/16

Category		Sep-15	Oct-15	Nov-15	Dec-15	Jan-16	Feb-16	Mar-16	Apr-16	May-16	Jun-16	Jul-16	Aug-16	Monthly Average	Total (12mths)	Percent		
Fall		23	25	25	22	26	24	25	33	31	36	24	21	26	315	100%		
Incident Location	1A	9	1	2	3	2	3	3	4	2	4	5	7	4	45	14%		
	1B	7	5	8	4	2	3	6	7	8	8	3	2	5	63	20%		
	1C	1	1	1	1	1	1	0	0	2	2	0	2	1	12	4%		
	1D	0	2	0	1	0	1	3	1	0	0	5	0	1	13	4%		
	1E	1	2	2	0	4	1	3	3	3	3	3	2	0	2	24	8%	
	1F	0	3	1	1	2	3	2	3	2	2	4	1	1	2	23	7%	
	1G	0	1	2	5	7	1	1	4	5	3	3	2	1	3	32	10%	
	2A	1	1	0	1	0	0	0	0	0	0	0	0	0	0	3	1%	
	2B	0	0	1	0	0	4	0	3	3	3	1	0	0	1	12	4%	
	2C	1	5	4	2	2	4	0	3	0	2	0	0	5	2	28	9%	
	2D	1	0	0	2	3	1	2	2	2	2	4	2	1	2	20	6%	
	TLC - Intensive	0	4	3	1	2	0	1	1	1	1	1	2	1	1	17	5%	
	TLC - Transitional	0	0	1	1	1	0	1	0	0	0	0	1	1	1	6	2%	
	Other	2	0	0	0	0	2	3	2	3	3	4	1	0	1	17	5%	
Physical Injury		39	45	23	14	31	34	25	32	30	29	31	30	30	363	100%		
Incident Location	1A	1	0	1	1	2	0	0	1	0	0	0	2	1	8	2%		
	1B	3	1	2	1	1	3	0	4	2	2	2	1	1	2	21	6%	
	1C	7	3	0	0	5	0	4	1	9	1	4	4	3	38	10%		
	1D	4	9	3	2	5	8	6	5	4	3	6	3	5	58	16%		
	1E	3	1	1	0	2	1	3	0	2	8	8	6	2	2	29	8%	
	1F	9	17	5	2	5	3	1	10	2	4	4	1	5	5	64	18%	
	1G	3	3	1	1	1	2	1	3	1	2	2	2	2	2	22	6%	
	2A	1	1	0	0	0	0	0	0	0	0	0	0	0	0	2	1%	
	2B	2	0	1	1	1	2	1	2	0	1	0	0	0	1	11	3%	
	2C	3	5	4	3	1	5	1	3	0	2	2	2	5	3	34	9%	
	2D	1	3	0	1	3	3	2	2	2	2	0	5	5	2	27	7%	
	TLC - Intensive	1	2	4	0	3	3	3	3	1	2	3	3	1	0	2	23	6%
	TLC - Transitional	0	0	0	0	1	1	1	0	1	0	0	2	0	1	6	2%	
	Other	1	0	1	2	1	3	2	0	5	3	3	1	1	2	20	6%	

* Not every incident is a major incident. This counts only those incidents that were classified to be major based on the policy.

Performance Related Information for Staff & Managers

6A. Demographic Information of Individuals in Care

Data Source: Avatar

Updated as of 09/20/16 #####

Category	Sub-group	Sep-15	Oct-15	Nov-15	Dec-15	Jan-16	Feb-16	Mar-16	Apr-16	May-16	Jun-16	Jul-16	Aug-16	Monthly Average	Percent*
Total Active (on Roll) at End of Month*		272	275	282	282	283	282	277	274	277	270	259	267	275	
Gender	Female	81	85	88	92	89	87	87	87	89	83	74	78	85	30.9%
	Male	191	190	194	190	194	195	190	187	188	186	185	189	190	69.1%
Age	Median Age (Years)	56 yrs	56 yrs	56 yrs	56 yrs	55 yrs	55 yrs	55 yrs	55 yrs	55 yrs	54 yrs	54 yrs	54 yrs	55 yrs	Figure 24
	<30 years old	40	40	40	42	43	45	38	33	34	26	31	31	37	13.4%
	>=30 and <40 years old	31	31	35	32	33	37	39	44	45	46	45	48	39	14.1%
	>=40 and <50 years old	22	29	31	30	31	27	27	28	26	29	23	27	28	10.0%
	>=50 and <60 years old	68	62	63	61	62	61	63	57	62	65	60	64	62	22.7%
	>=60 years old	111	113	113	117	114	112	110	112	110	103	100	97	109	39.8%
Legal Status of Individuals on Roll at End of Month	Emergency	25	24	23	26	15	20	17	16	20	18	14	16	20	7.1%
	Inpatient Commitment	32	28	30	31	35	35	34	34	34	34	32	34	33	11.9%
	Outpatient Commitment	25	27	30	26	34	31	29	31	30	29	26	22	28	10.3%
	Voluntary	37	40	41	41	44	42	41	39	39	37	39	34	40	14.4%
	Non-Protesting	0	0	0	0	0	0	0	0	0	0	0	0	0	0.0%
	Civil Sub-total	119	119	124	124	128	128	121	120	123	118	111	106	120	43.7%
	DC Exam	39	43	46	46	37	37	44	42	38	45	47	49	43	15.5%
	Mentally Incompetent	32	31	29	31	38	36	34	36	39	32	30	41	34	12.4%
	Forensic Pre-trial Sub-total	71	74	75	77	75	73	78	78	77	77	77	90	77	27.9%
	NGBRI - DC	70	70	71	68	67	68	66	65	66	64	61	61	66	24.2%
NGBRI - US	8	8	8	8	8	7	7	6	6	6	6	6	7	2.5%	
NGBRI - VI	1	1	1	1	1	1	1	1	1	1	1	1	1	0.4%	
Dual Commitment	0	0	0	0	0	0	0	0	0	0	0	0	0	0.0%	
Post Trial Mental Exam PTME	0	0	0	1	1	2	1	1	1	0	0	0	1	0.2%	
Sexual Psychopath (Miller Act)	3	3	3	3	3	3	3	3	3	3	3	3	3	1.1%	
Forensic Post-trial Sub-total	82	82	83	81	80	81	78	76	77	74	71	71	78	28.4%	
Length of Stay	<30 Days	22	35	26	26	29	38	29	32	36	34	30	34	31	11.2%
	>=30 ~ <365 Days	101	90	103	107	105	92	96	88	85	85	84	90	94	34.1%
	>= 1 Year & < 2 Years	34	33	36	33	30	33	31	34	36	30	28	28	32	11.7%
	>= 2 Years & < 5 Years	31	33	33	34	36	36	39	40	41	42	40	38	37	13.4%
	>= 5 Years & < 20 Years	48	48	48	46	48	48	47	46	45	44	43	43	46	16.8%
	>= 20 Years	36	36	36	36	35	35	35	34	34	34	34	34	35	12.7%
	Median LOS (Days)	466 d	465 d	462 d	484 d	494 d	466 d	496 d	475 d	475 d	475 d	506 d	478 d	479 d	Figure 25
	Median LOS - Civil	540 d	571 d	567 d	568 d	562 d	573 d	604 d	626 d	627 d	632 d	637 d	694 d	600 d	
	Median LOS - Pre-trial	78 d	63 d	69 d	76 d	68 d	55 d	56 d	58 d	61 d	57 d	52 d	63 d	63 d	
	Median LOS - Post-trial	4110 d	4141 d	4079 d	4110 d	4141 d	4170 d	4293 d	4323 d	3998 d	4384 d	5534 d	4565 d	4321 d	
Average LOS (Days)	2400 d	2391 d	2356 d	2341 d	2324 d	2339 d	2406 d	2362 d	2355 d	2383 d	2461 d	2397 d	2376 d		
Average LOS - Civil	1666 d	1686 d	1648 d	1661 d	1647 d	1651 d	1742 d	1730 d	1708 d	1741 d	1829 d	1913 d	1719 d		
Average LOS - Pre-trial	126 d	123 d	130 d	138 d	133 d	131 d	139 d	139 d	147 d	124 d	122 d	125 d	131 d		
Average LOS - Post-trial	5433 d	5461 d	5425 d	5474 d	5531 d	5553 d	5654 d	5714 d	5510 d	5755 d	5986 d	5998 d	5625 d		

* Counts the total number of individuals who are on the hospital roll at end of each month. This number serves as denominator to calculate percentage of each group.

Performance Related Information for Staff & Managers

6B. Demographic Information of Individuals in Care

Data Source: Avatar

Updated as of 09/20/16

Category	Sub-group	Sep-15	Oct-15	Nov-15	Dec-15	Jan-16	Feb-16	Mar-16	Apr-16	May-16	Jun-16	Jul-16	Aug-16	Monthly Average	Percent*
Total Active (on Roll) at End of Month*		272	275	282	282	283	282	277	274	277	270	259	267	275	
Gender	Female	30%	31%	31%	33%	31%	31%	31%	31%	32%	32%	31%	29%	31%	
	Male	70%	69%	69%	67%	69%	69%	69%	69%	68%	68%	69%	71%	69%	
Age	Median Age (Years)	56 yrs	56 yrs	56 yrs	56 yrs	55 yrs	55 yrs	55 yrs	55 yrs	55 yrs	55 yrs	54 yrs	54 yrs	55 yrs	
	<30 yrs	15%	15%	14%	15%	15%	16%	14%	14%	12%	12%	10%	12%	13%	
	>=30 and <40 yrs	11%	11%	12%	11%	12%	13%	14%	14%	16%	16%	17%	18%	14%	
	>=40 and <50 yrs	8%	11%	11%	11%	11%	10%	10%	10%	10%	9%	11%	10%	10%	
	>=50 and <60 yrs	25%	23%	22%	22%	22%	22%	23%	23%	21%	22%	24%	24%	23%	
	>=60 yrs	41%	41%	40%	41%	40%	40%	40%	40%	41%	40%	38%	36%	40%	
Legal Status of Individuals on Roll at End of Month	Emergency	9%	9%	8%	9%	5%	7%	6%	6%	6%	7%	7%	6%	7%	
	Inpatient Commitment	12%	10%	11%	11%	12%	12%	12%	12%	12%	12%	13%	13%	12%	
	Outpatient Commitment	9%	10%	11%	9%	12%	11%	10%	10%	11%	11%	11%	8%	10%	
	Voluntary	14%	15%	15%	15%	16%	15%	15%	15%	14%	14%	14%	13%	14%	
	Non-Protesting	0%	0%	0%	0%	0%	0%	0%	0%	0.0%	0.0%	0.0%	0.0%	0%	
	Civil Sub-total	44%	43%	44%	44%	45%	45%	44%	44%	44%	44%	44%	40%	44%	
	DC Exam	14%	16%	16%	16%	13%	13%	16%	16%	15%	14%	17%	18%	16%	
	Mentally Incompetent	12%	11%	10%	11%	13%	13%	12%	12%	13%	14%	12%	15%	12%	
	Forensic Pre-trial Sub-total	26%	27%	27%	27%	27%	26%	28%	28%	28%	28%	29%	34%	28%	
	NGBRI - DC	26%	25%	25%	24%	24%	24%	24%	24%	24%	24%	24%	23%	24%	
	NGBRI - US	3%	3%	3%	3%	3%	2%	3%	3%	2%	2%	2%	2%	3%	
	NGBRI - VI	0%	0%	0%	0%	0%	0%	0%	0%	0%	0%	0%	0%	0%	
	Dual Commitment	0%	0%	0%	0%	0%	0%	0%	0%	0%	0%	0%	0%	0%	
Sexual Psychopath (Miller Ac	1%	1%	1%	1%	1%	1%	1%	1%	1%	1%	1%	1%	1%		
Forensic Post-trial Sub-total	30%	30%	29%	29%	28%	29%	28%	28%	28%	28%	28%	27%	27%	28%	
Length of Stay	Median LOS (Days)	466 d	465 d	462 d	484 d	494 d	466 d	496 d	496 d	475 d	475 d	475 d	478 d	478 d	
	Average LOS (Days)	2400 d	2391 d	2356 d	2341 d	2324 d	2339 d	2406 d	2406 d	2362 d	2355 d	2383 d	2397 d	2372 d	
	<30 days	8%	13%	9%	9%	10%	13%	10%	10%	12%	13%	13%	13%	11%	
	>=30 days & <365 days	37%	33%	37%	38%	37%	33%	35%	35%	32%	31%	31%	34%	34%	
	>= 1 year & < 2 years	13%	12%	13%	12%	11%	12%	11%	11%	12%	13%	11%	10%	12%	
	>= 2 years & < 5 years	11%	12%	12%	12%	13%	13%	14%	14%	15%	15%	16%	14%	13%	
	>= 5 years & < 20 years	18%	17%	17%	16%	17%	17%	17%	17%	17%	16%	16%	16%	17%	
>= 20 years	13%	13%	13%	13%	12%	12%	13%	13%	12%	12%	13%	13%	13%		

* Counts the total number of individuals who are on the hospital roll at end of each month. This number serves as denominator to calculate percentage of each group.