



Government of the District of Columbia
Department of Behavioral Health (DBH)



PRISM

Performance Related Information for Staff and Managers



APRIL 2016

Office of Statistics and Reporting (OSR), 05/12/16

Table of Contents

1. Admissions to SEH ..... 1
2. Discharges from SEH ..... 1
3. Average Daily Census ..... 2
4. Transfers ..... 2
5. 30-Day Readmission Rate ..... 2
6. Unusual Incidents ..... 3
7. Patient-Involved Unusual Incidents ..... 3
8. Admissions vs. Patient UI Rate ..... 4
9. Unusual Incidents by Severity ..... 4
10. Selected Types of Incidents ..... 4
11. Physical Assaults by Severity ..... 5
12. Patient Injuries ..... 5
13. Staff Injuries ..... 5
14. Patient and Staff Falls ..... 6
15. Percent of Patients Restrained or Secluded ..... 6
16. Restraint Hours Rate & Seclusion Hours Rate ..... 6
17. Elopements ..... 7
18. Reported Medication Variance Events ..... 7
19. Reported Adverse Drug Reactions ..... 8
20. Percent of Missing Documentation on Med-Administration ..... 8
21. Medication Refusal Rate\* ..... 8
22. Number of STAT Events and Individuals Involved ..... 9
23. Percentage of SiteFM Work Orders Completed within 3 Days ..... 9
24. Demographics ..... 10
25. Length of Stay ..... 11
Appendix Tables

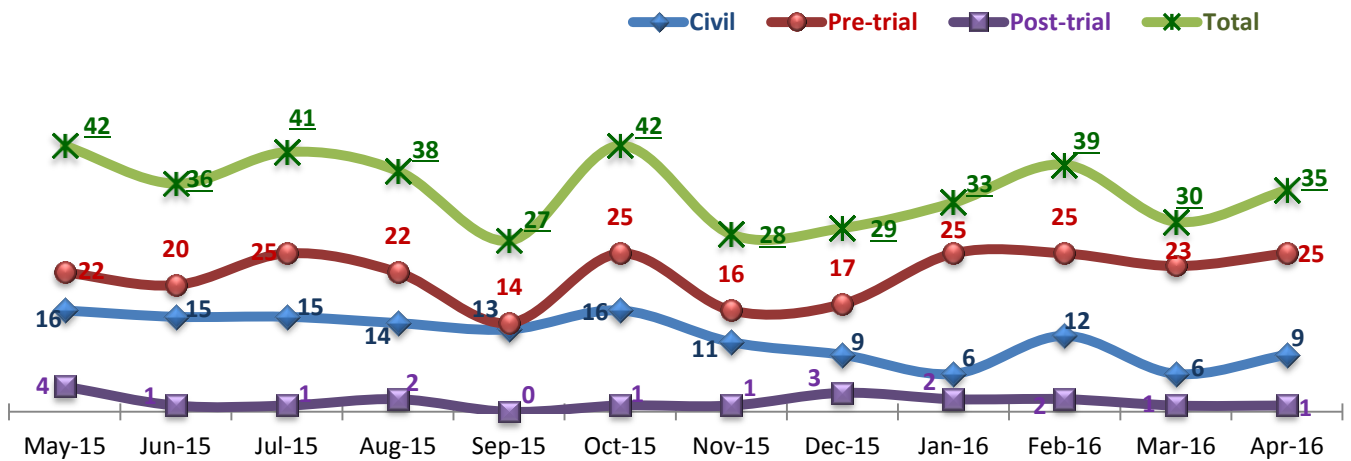
Data Disclaimer

The primary source of data extracted and analyzed herein is Avatar, the Saint Elizabeths Hospital's electronic medical record system. Additional data source includes, but is not limited to, the Hospital's Unusual Incident Database and SiteFM. Data reflects information as entered in each system by users. The Office of Statistics and Reporting (OSR) has made reasonable efforts to ensure that data and its accompanying information are as accurate and up-to-date as possible at the time of analysis and publication but does not guarantee the accuracy, reliability, or completeness of data. The OSR is not liable for any misinterpretation or misuse of the data. Use of any information from PRISM must be fully acknowledged and/or cited. Use of PRISM data for anything other than patient care determinations or management of the services provided within the hospital (including external publications, research papers, presentations, etc.) is prohibited without written permission from the Chief Quality and Data Manager Officer at the Saint Elizabeths Hospital.

**Key Trends: Admission, Discharge, Transfer, Census, and Readmissions (1~6)**

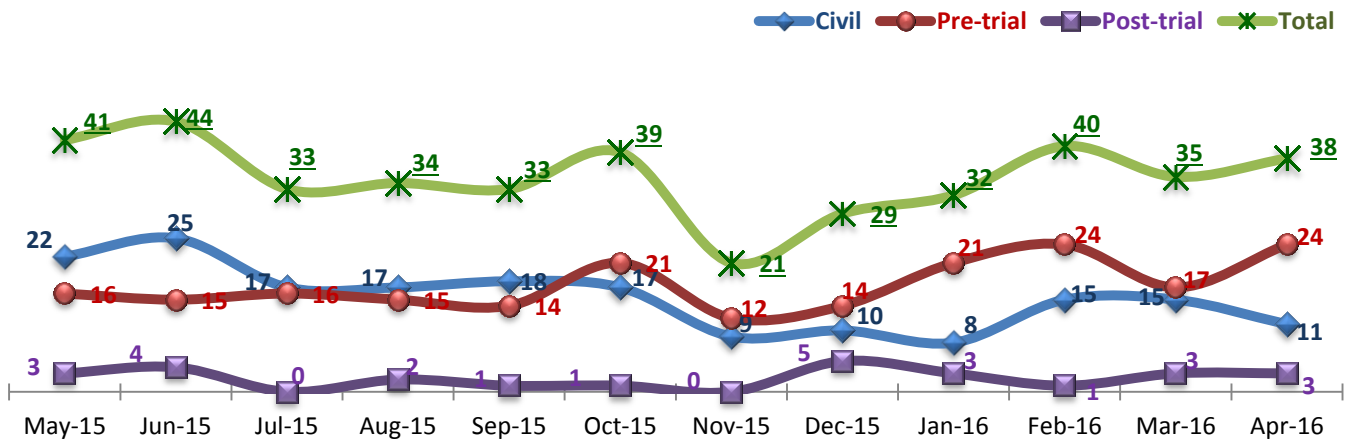
- The number of admissions and the number of discharges both increased in April 2016 from March. The number of discharges (38) slightly exceeded that of admissions (35) and the average daily census (ADC) for March remained at 279, same as the previous month.
- The increase of discharge in April 2016 is primarily due to an increase of discharges for pre-trial population and the number of discharges for civil population declined to 11 in April from 15 in March. The average number of civil discharges per month for the first 7 months in FY16 is 13, which is noticeably lower than the average number of civil discharges per month (19) in FY15, between October 2014 and September 2015.
- There was one 30-day readmission from civil discharges in the month of March 2016, and the 30-day readmission rate for the last 11 months (3.4%), between May 2015 and March 2016, remained below the national average (NPR at 6.9%)<sup>1</sup>. The 30-day readmission rate for civil, pre-trial and post-trial discharges during this time period is 6.5%, 0.5%, and 4.2%, respectively.

**1. Admissions to SEH**



\* Number of admissions to SEH inpatient program, including transfers from forensic outpatient to inpatient program.

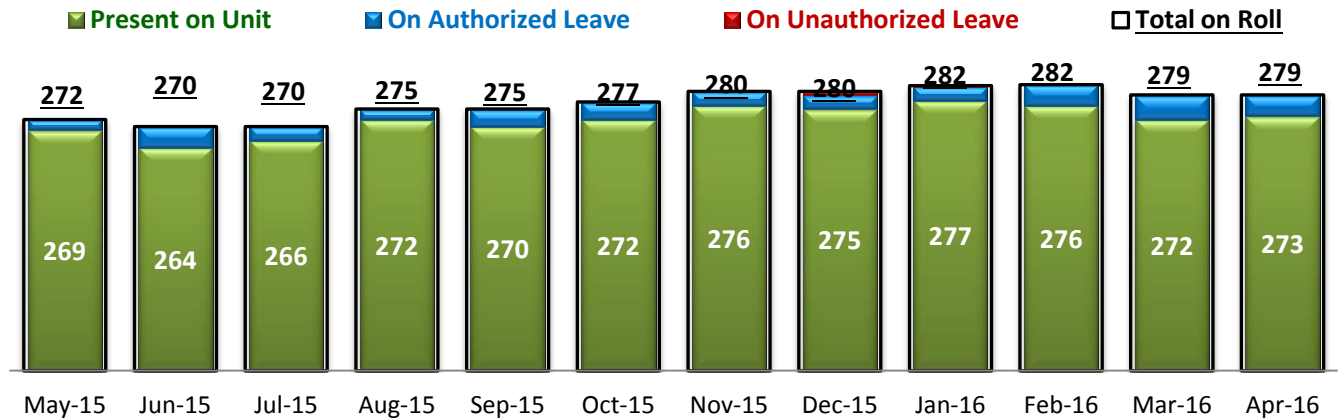
**2. Discharges from SEH**



\* Number of discharges from SEH inpatient program, including transfers from inpatient to forensic outpatient program.

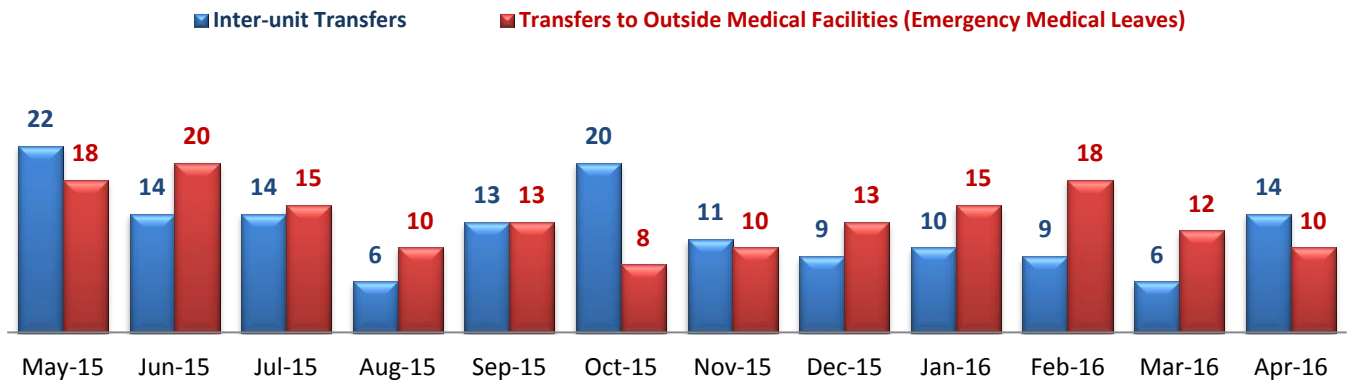
<sup>1</sup> NPR: National Public Rate as of June 2013 was published in November 2013 by National Association of State Mental Health Program Directors Research Institute (NRI), based on data collected from a number of state psychiatric hospitals nationwide.

### 3. Average Daily Census



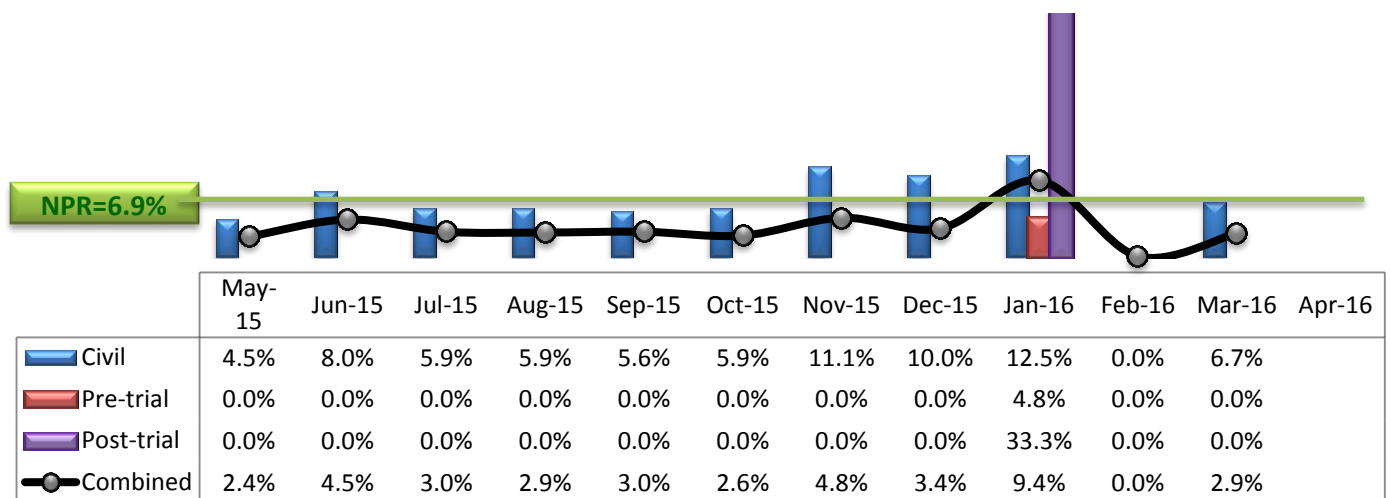
\* Data above is the daily average number of individuals counted at 11:59 PM every day during each month.

### 4. Transfers



\* Number of inter-unit transfers that occurred during month and number of emergency medical leaves that were initiated during month.

### 5. 30-Day Readmission Rate



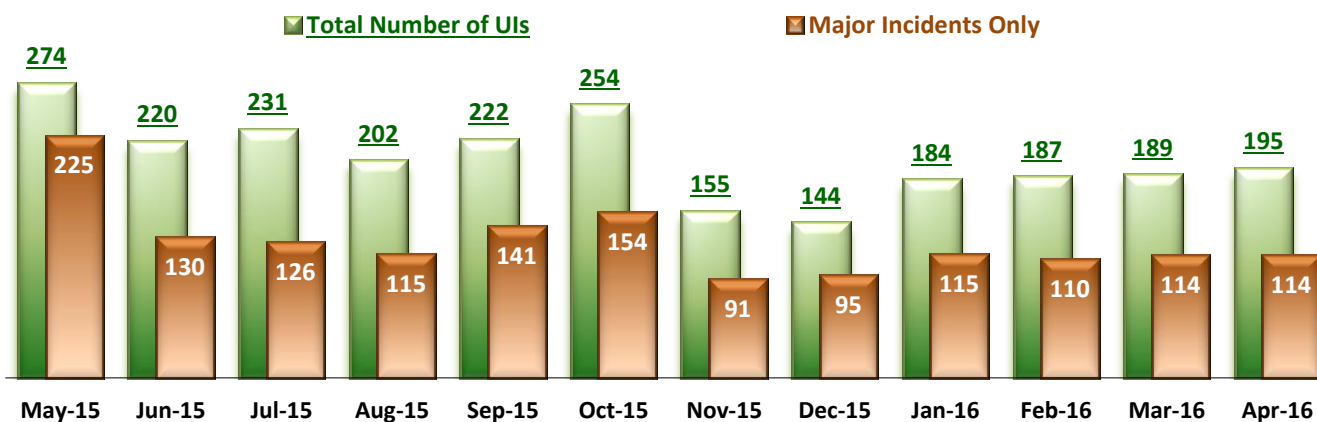
\* Percent of discharges that returned to SEH within 30 days of discharges. It does not include those who may have been re-hospitalized at another psychiatric facility. This measure requires 30-day observation following discharge.

\*\* The post-trial denominators (discharges) per month range only between one and six, making the monthly re-admission rate high when there is any. For example, in December 2014, there was only one post-trial discharge, which was readmitted within 30 days. Thus, the 30-day readmission rate for post-trial discharge for this month is 100%.

**Key Trends: Unusual Incidents (6~17)**

- The frequency of unusual incidents (UIs) tends to mirror the trend in the number of admissions as individuals in early stage of hospitalization are more likely to be involved in unusual incidents than those who have been in care for a longer period of time. In the month of April 2016, the number of unusual incidents particularly that involved individuals in care increased as the number of admissions increase.
- In April 2016, the number of incidents involving aggressive behaviors with non-physical contact increased only marginally but physical assaults, psychiatric emergencies, patient falls and incidents that triggered injuries noticeably increased.
- The percent of unique individuals restrained decreased while that of unique individuals secluded increased. The overall time spent for restraint and secluded both increased but the restraint hours rate (0.207 per 1000 patient hours) and seclusion hours rate (0.196) continued to be far below the national average (0.71 and 0.44, respectively).
- In April 2016, the number of patient falls increased and so did the patient fall rate (4.02 per 1000 patient days), which is significant higher than 2.84 in March and is the highest level since February 2015.
- February and March 2016 each had one elopement and April had two elopements.

**6. Unusual Incidents**



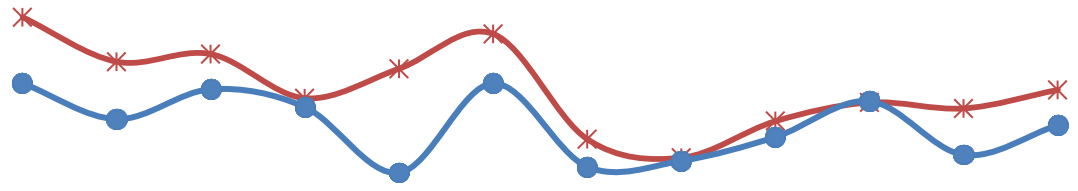
**7. Patient-Involved Unusual Incidents**



	May-15	Jun-15	Jul-15	Aug-15	Sep-15	Oct-15	Nov-15	Dec-15	Jan-16	Feb-16	Mar-16	Apr-16
# of Patient-Involved UIs	256	206	221	187	205	244	148	136	170	174	178	189
# of Unique Patients in UI	138	104	132	111	117	127	112	105	110	117	122	122
Patient UI Rate	30.7	26.0	26.8	22.2	25.3	28.9	17.9	15.9	19.8	21.7	21.1	23.0

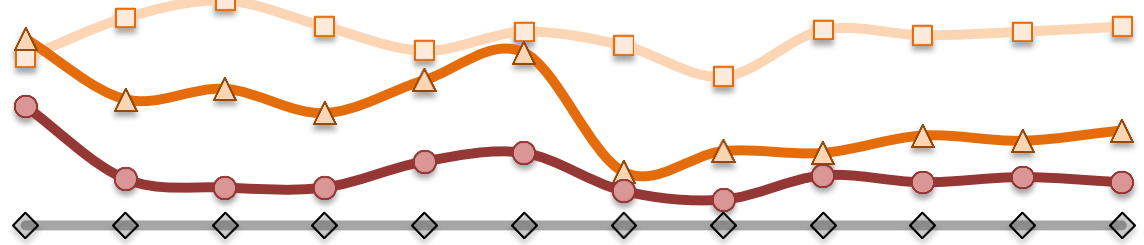
\* The patient UI rate is the number of patient-involved unusual incidents reported for every 1000 inpatient days.

### 8. Admissions vs. Patient UI Rate



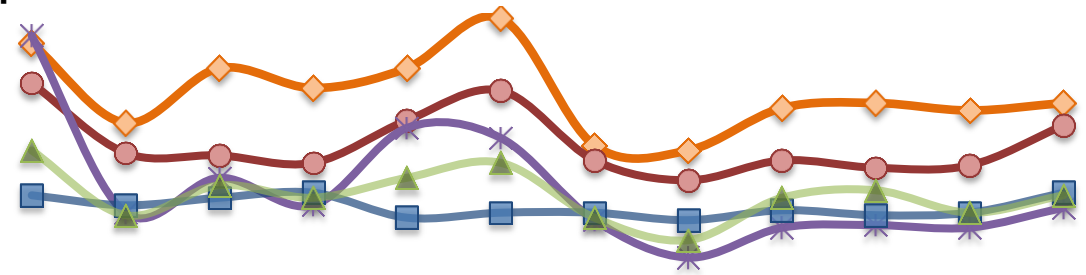
	May-15	Jun-15	Jul-15	Aug-15	Sep-15	Oct-15	Nov-15	Dec-15	Jan-16	Feb-16	Mar-16	Apr-16
—*— Patient UI Rate	30.7	26.0	26.8	22.2	25.3	28.9	17.9	15.9	19.8	21.7	21.1	23.0
—●— Admission	42	36	41	38	27	42	28	29	33	39	30	35

### 9. Unusual Incidents by Severity



	May-15	Jun-15	Jul-15	Aug-15	Sep-15	Oct-15	Nov-15	Dec-15	Jan-16	Feb-16	Mar-16	Apr-16
□ 1) Low	97	120	130	115	101	112	104	86	113	110	112	115
△ 2) Medium	108	73	79	65	84	100	31	43	42	52	49	55
● 3) High	69	27	22	22	37	42	20	15	29	25	28	25
◇ 4) Catstrp	0	0	0	0	0	0	0	0	0	0	0	0
Total UI	274	220	231	202	222	254	155	144	184	187	189	195

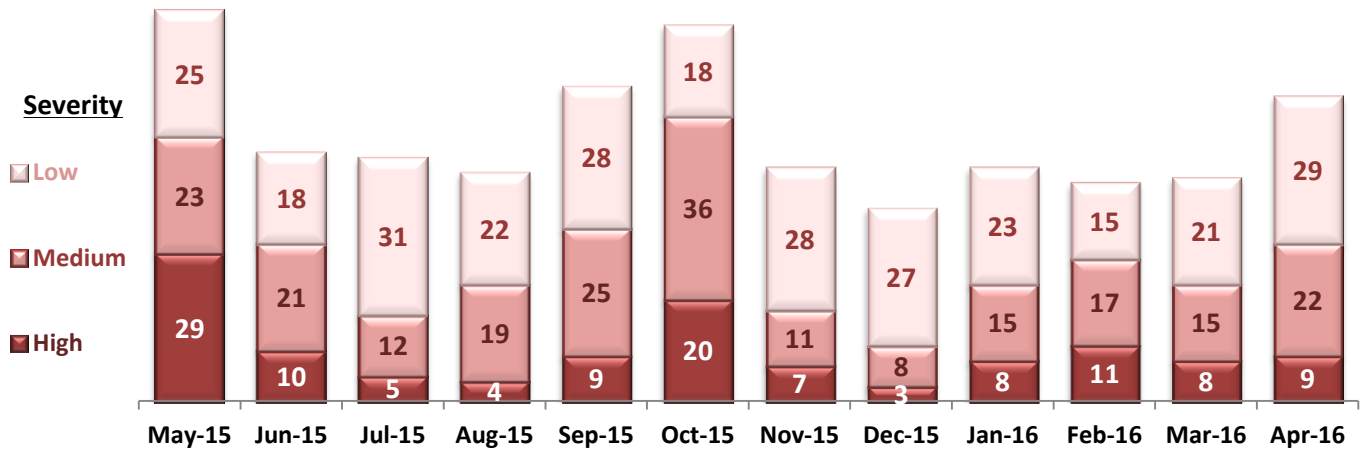
### 10. Selected Types of Incidents



	May-15	Jun-15	Jul-15	Aug-15	Sep-15	Oct-15	Nov-15	Dec-15	Jan-16	Feb-16	Mar-16	Apr-16
◆ Aggressive Behavior	93	61	83	75	83	103	52	50	67	69	66	69
● Physical Assault	77	49	48	45	62	74	46	38	46	43	44	60
* Pysch Emerg.	96	25	39	28	59	55	22	7	19	20	19	27
■ Fall	32	28	31	33	23	25	25	22	26	24	25	33
▲ Injury	50	24	36	31	39	45	23	14	31	34	25	32

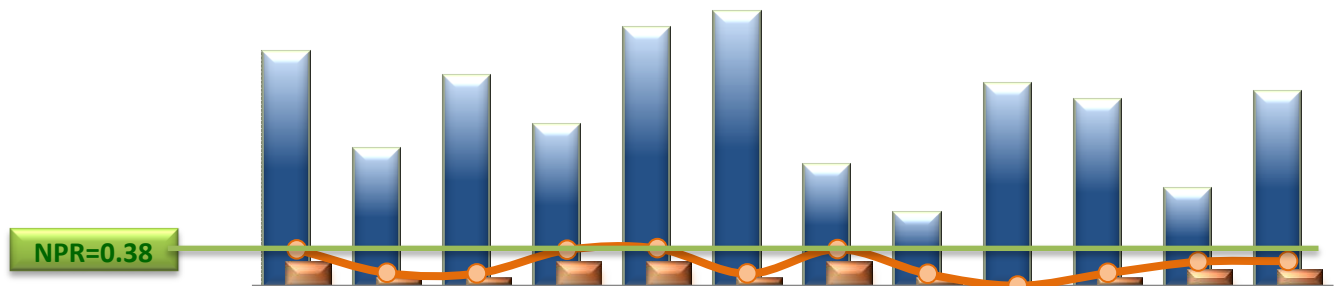
\* These are incident types that are frequently reported. Some incidents may be counted in multiple categories. For example, a physical assault incident that accompanied psychiatric emergency and injury is counted under psychiatric emergency and injury as well as under physical assault. Injury is broadly defined to include any type of injuries regardless of the cause or severity level.

### 11. Physical Assaults by Severity



\* Any physical assault that accompanies a code 13 or results in extensive injury needing off-unit treatment or transfer to ER is considered to be high severity; any physical assault that causes a minor injury that can be treated on unit is considered to be medium severity; and physical assault events that result in no injury are considered to be low severity.

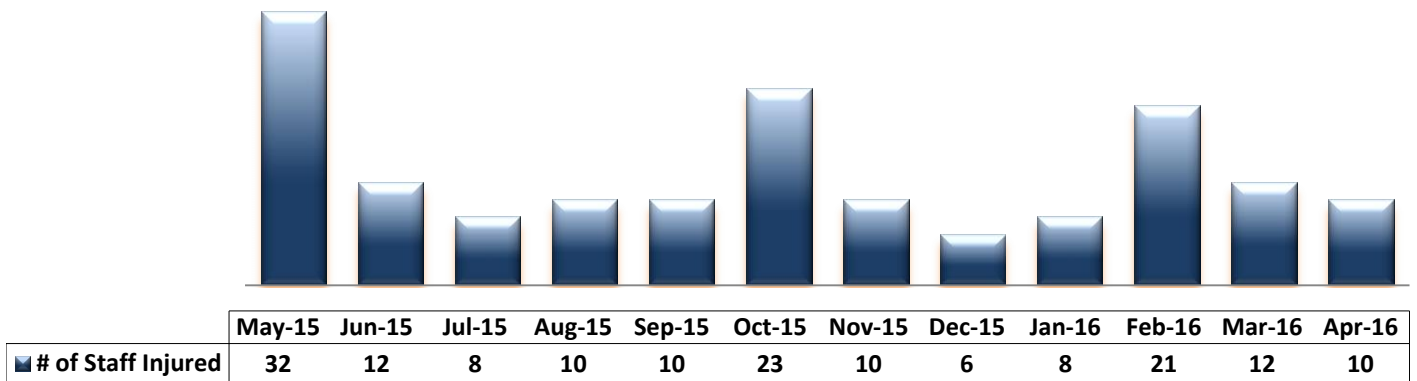
### 12. Patient Injuries



	May-15	Jun-15	Jul-15	Aug-15	Sep-15	Oct-15	Nov-15	Dec-15	Jan-16	Feb-16	Mar-16	Apr-16
Total Pts Injured	29	17	26	20	32	34	15	9	25	23	12	24
Major Pt Injuries*	3	1	1	3	3	1	3	1	0	1	2	2
Patient Injury Rate	0.36	0.13	0.12	0.36	0.37	0.12	0.36	0.12	0.00	0.12	0.24	0.24

\* Injury is broadly defined to include any type of injuries regardless of the cause or severity level. The total number of patients injured represents all of the reported injuries including minor injuries treated with first aid alone. However, the patient injury rate considers only the number of patient injuries that required beyond first-aid level treatment based on the NRI definition and the patient injury rate is the number of 'major' patient injuries per every 1000 inpatient days

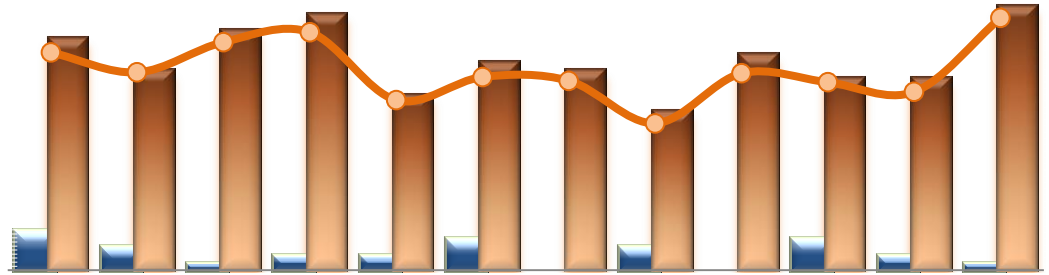
### 13. Staff Injuries



\* Injury is broadly defined to include any type of injuries regardless of the cause or severity level. The total number of staff injured represents all of the reported staff injuries including minor injuries treated with first aid alone.



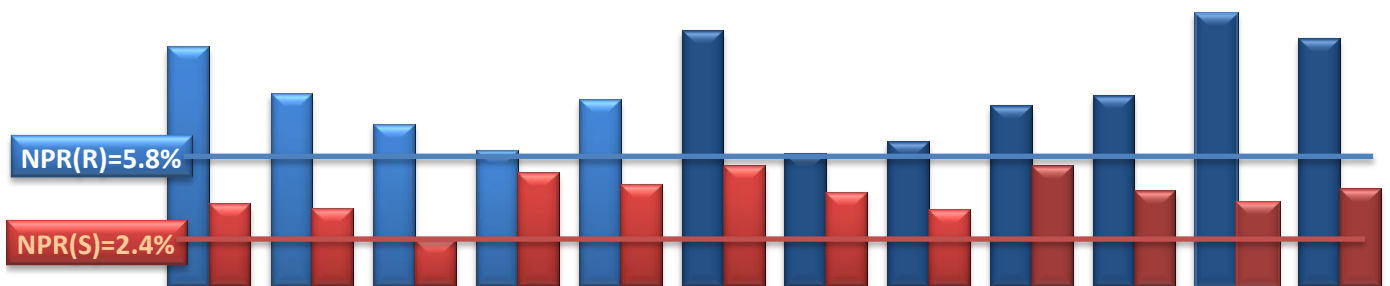
### 14. Patient and Staff Falls



	May-15	Jun-15	Jul-15	Aug-15	Sep-15	Oct-15	Nov-15	Dec-15	Jan-16	Feb-16	Mar-16	Apr-16
Total Staff who Fell	5	3	1	2	2	4	0	3	0	4	2	1
Total Patients who Fell	29	25	30	32	22	26	25	20	27	24	24	33
Patient Fall Rate	3.47	3.15	3.64	3.79	2.71	3.08	3.02	2.34	3.14	3.00	2.84	4.02

\* The patient fall rate is the number of patient falls per every 1000 inpatient days.

### 15. Percent of Patients Restrained or Secluded

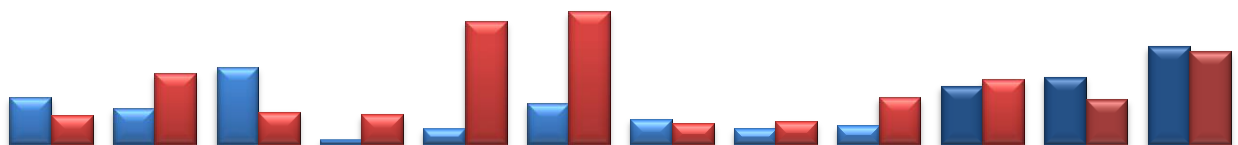


	May-15	Jun-15	Jul-15	Aug-15	Sep-15	Oct-15	Nov-15	Dec-15	Jan-16	Feb-16	Mar-16	Apr-16
Restraint	10.2%	8.2%	6.9%	5.8%	7.9%	10.9%	5.6%	6.2%	7.7%	8.1%	11.6%	10.6%
Seclusion	3.5%	3.3%	2.0%	4.8%	4.3%	5.1%	4.0%	3.2%	5.1%	4.1%	3.5%	4.2%

\* Percent of unique patients who were restrained at least once and percent of unique patients who were secluded at least once. The denominator includes all individuals who were served in care >=1 day during month.

\*\* Prior to April 2015, the Hospital tracked only mechanical restraint events, but the Hospital's restraint policy has changed to include any physical holds. The sudden increase of the restraint data as of April 2015 reflects this change.

### 16. Restraint Hours Rate & Seclusion Hours Rate

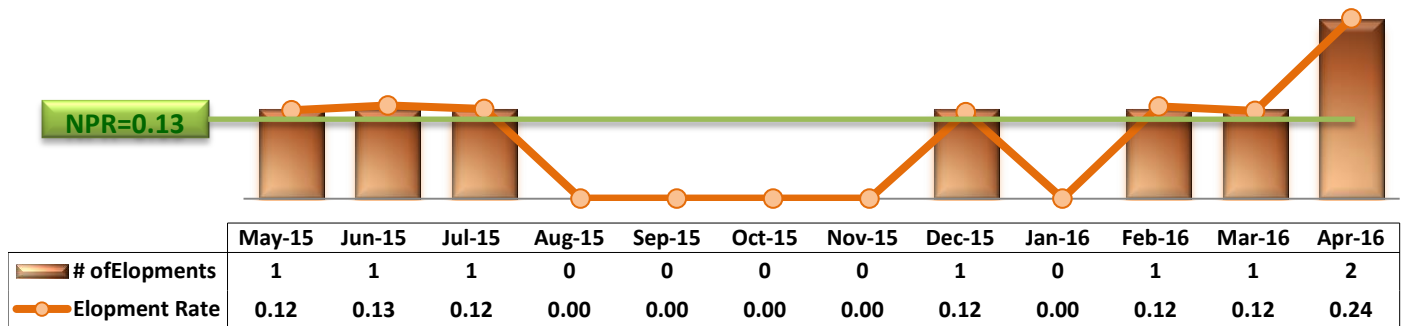


	May-15	Jun-15	Jul-15	Aug-15	Sep-15	Oct-15	Nov-15	Dec-15	Jan-16	Feb-16	Mar-16	Apr-16
Restraint	0.098	0.074	0.163	0.008	0.031	0.086	0.052	0.032	0.038	0.123	0.142	0.207
Seclusion	0.060	0.150	0.067	0.062	0.260	0.281	0.043	0.047	0.099	0.136	0.093	0.196

\* Restraint/Seclusion Hours Rate: Number of hours spent in restraint/seclusion for every 1000 inpatient hours.

\*\* The duration of each physical hold event is counted as 1 minute as a physical hold is ordered and used only as a temporary intervention that lasts less than a minute to break up any physical conflicts or to administer emergency medications.

## 17. Elopements

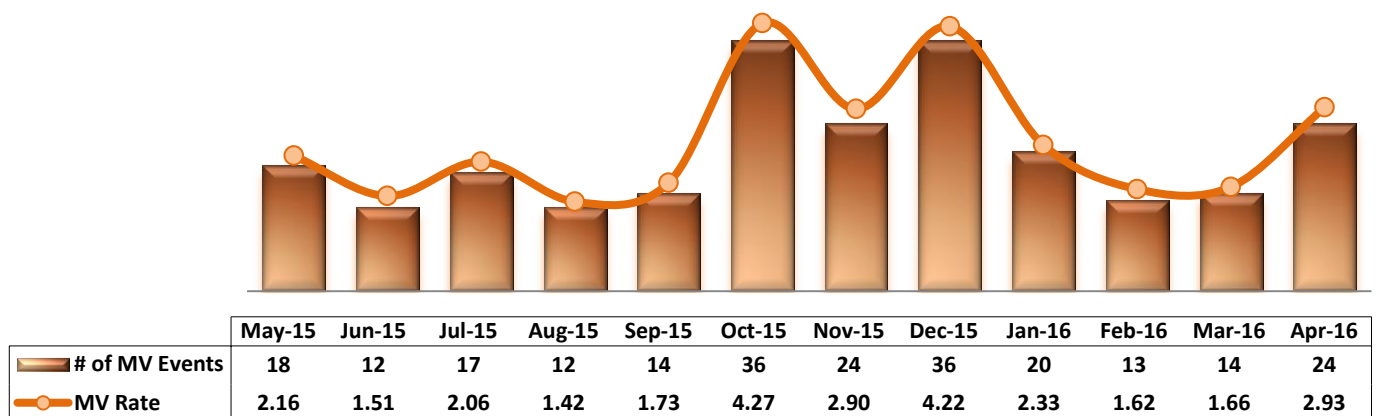


\* Data herein counts the number of unauthorized leaves for any duration that were initiated during month and were recorded in Avatar. The elopement rate is the number of those unauthorized leaves that occurred for every 1000 inpatient days.

### Key Trends: Medication Documentation, MV, ADR, and STAT (18~22)

- The monthly number of reported Medication Variance (MV) events in April 2016 increased to 24 from the previous three months.
- No Adverse Drug Reaction (ADR) event was reported for the last three months, between February and April 2016.
- The rate of missing documentation by nursing staff on medication administration (0.56%) increased in April 2016, from 0.49% in March.
- The number of STAT (emergency medication) events in April 2016 (80) is considerably higher than that of the previous month (52), reflecting the increase of violence related incidents during the month. However, the number of unique individuals involved in one or more STAT events decreased from 29 in March to 25 in April. In fact, further analysis found that 35 STAT events (44%) were triggered by just two (2) individuals in care.

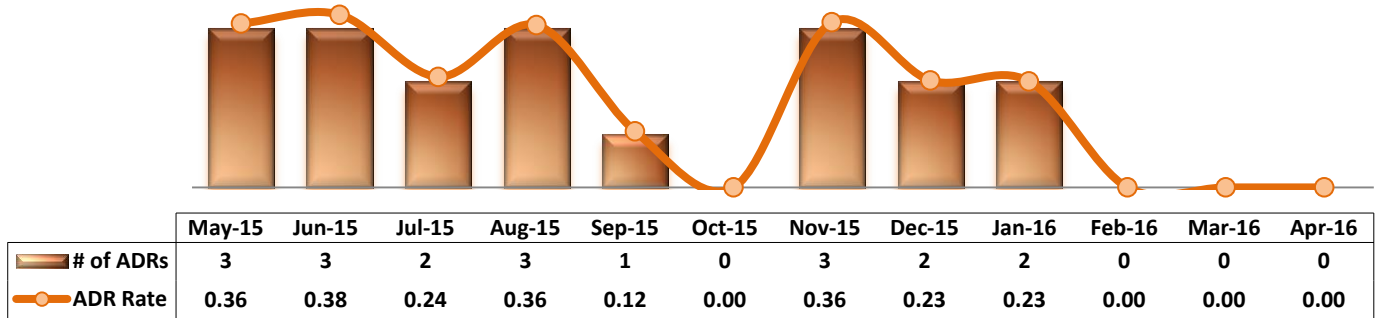
## 18. Reported Medication Variance Events



\* MV Rate: Number of reported medication variance events that occurred for every 1000 inpatient days.

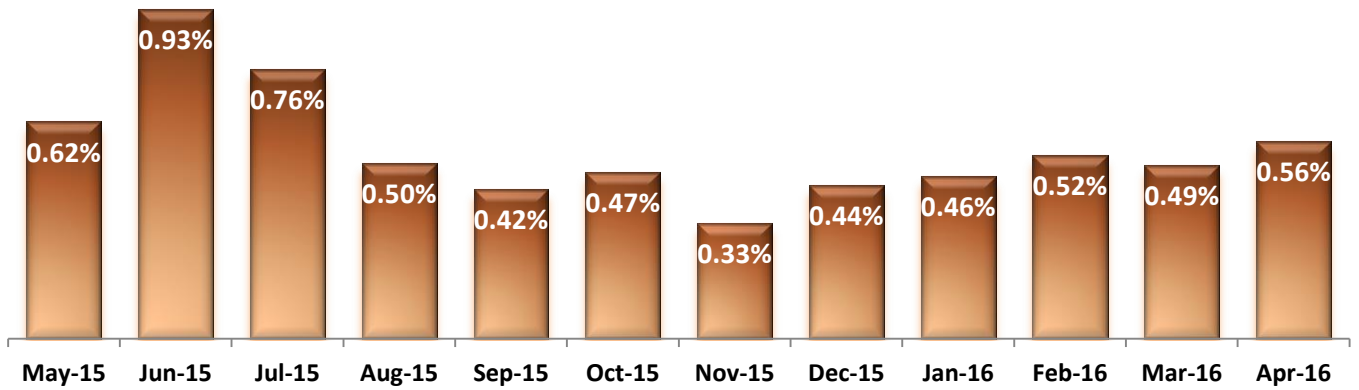


### 19. Reported Adverse Drug Reactions

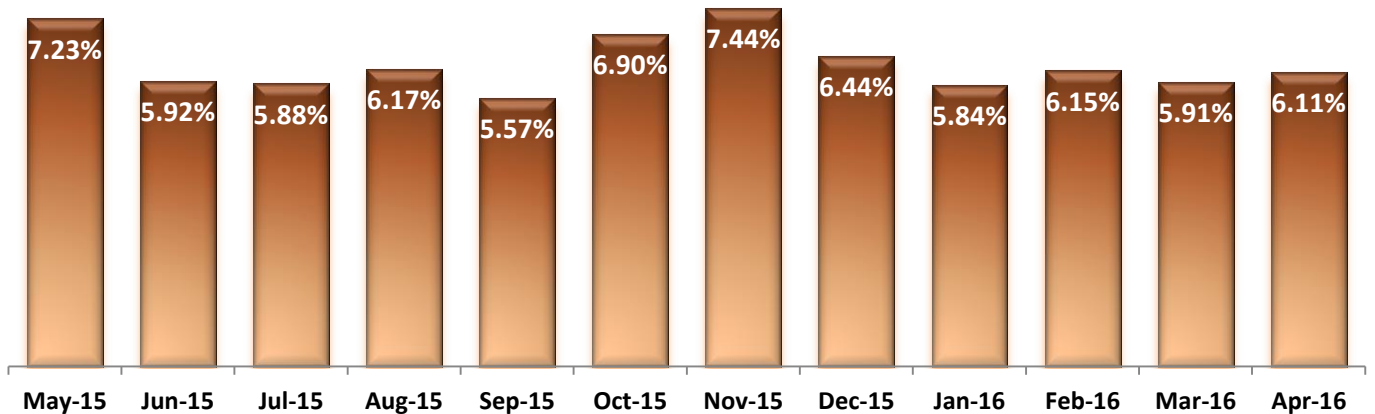


\* ADR Rate: Number of reported adverse drug reaction events that occurred for every 1000 inpatient days.

### 20. Percent of Missing Documentation on Med-Administration

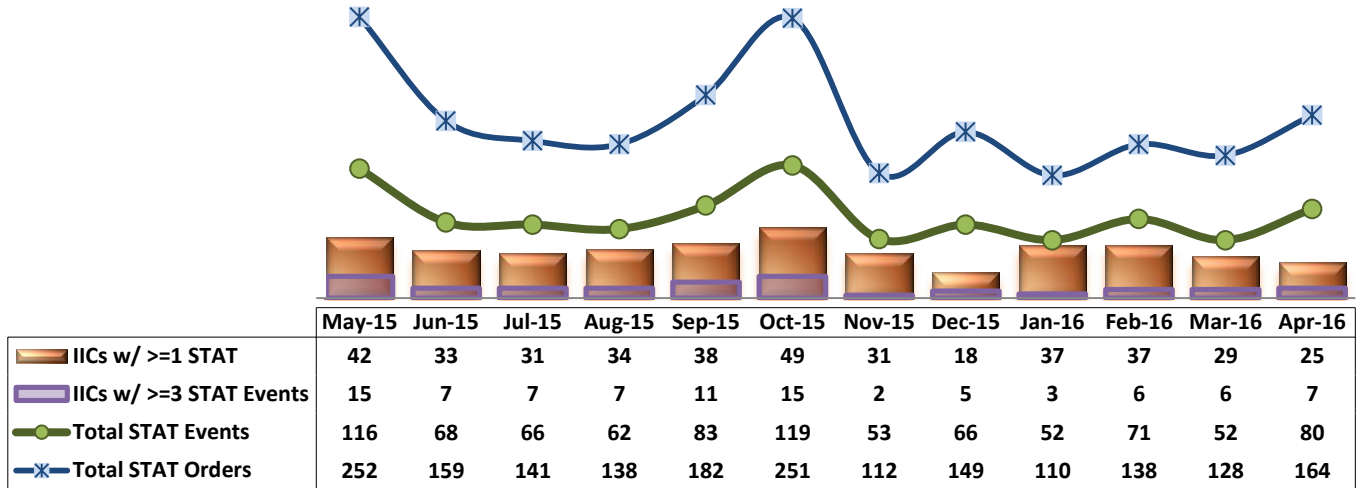


### 21. Medication Refusal Rate\*



\* Medication Refusal Rate: the number of refused medication doses divided by the total number of doses scheduled for administration.

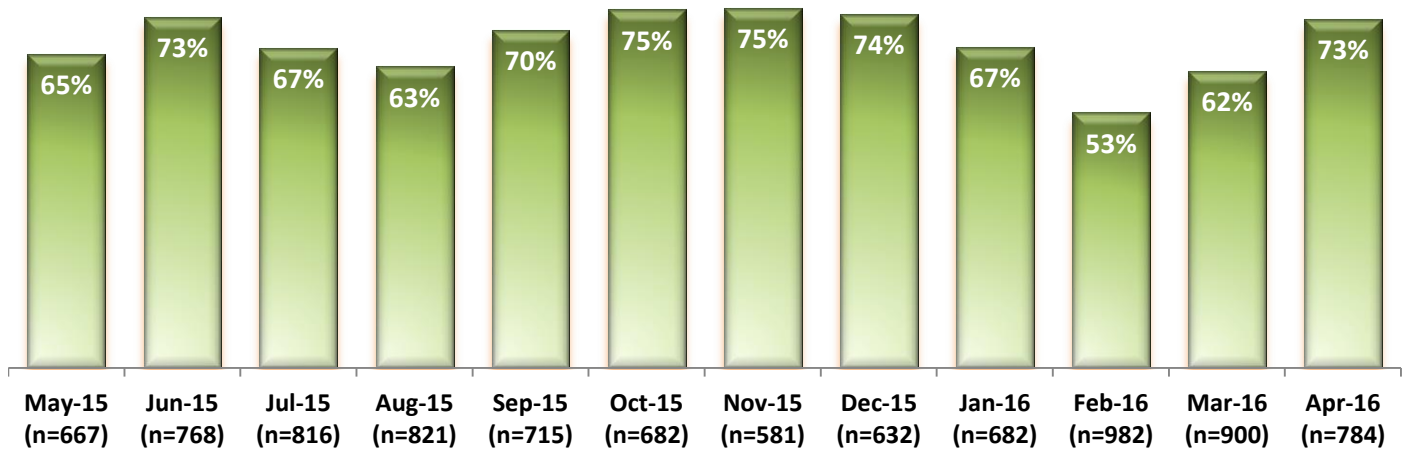
## 22. Number of STAT Events and Individuals Involved



### Key Trends: Environment of Care (23)

- The 3 day completion rate of the SiteFM work orders between January and March 2016 was noticeably lower: 67% in January 2016, 53% in February, and 62% in March 2016. However, the 3 day completion rate significantly increased to 73% in April 2016.
- In February and March 2016, the Hospital received a total of 982 SiteFM work orders (or 34 per day) and 900 orders (or 29 per day), respectively. The number of SiteFM work orders in April 2016 significantly declined to a total of 784 orders (or 26 per day) but is still above the average number of work orders in FY15 (24 per day).

## 23. Percentage of SiteFM Work Orders Completed within 3 Days

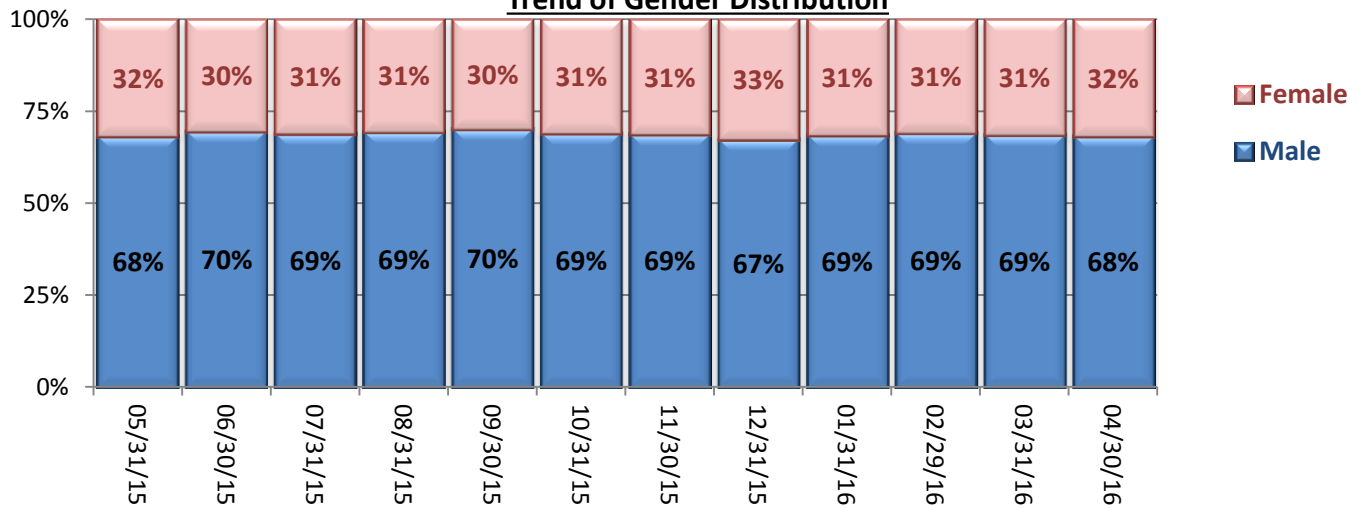


**Key Trends: Demographics, Legal Status, and Length of Stay (24-25)**

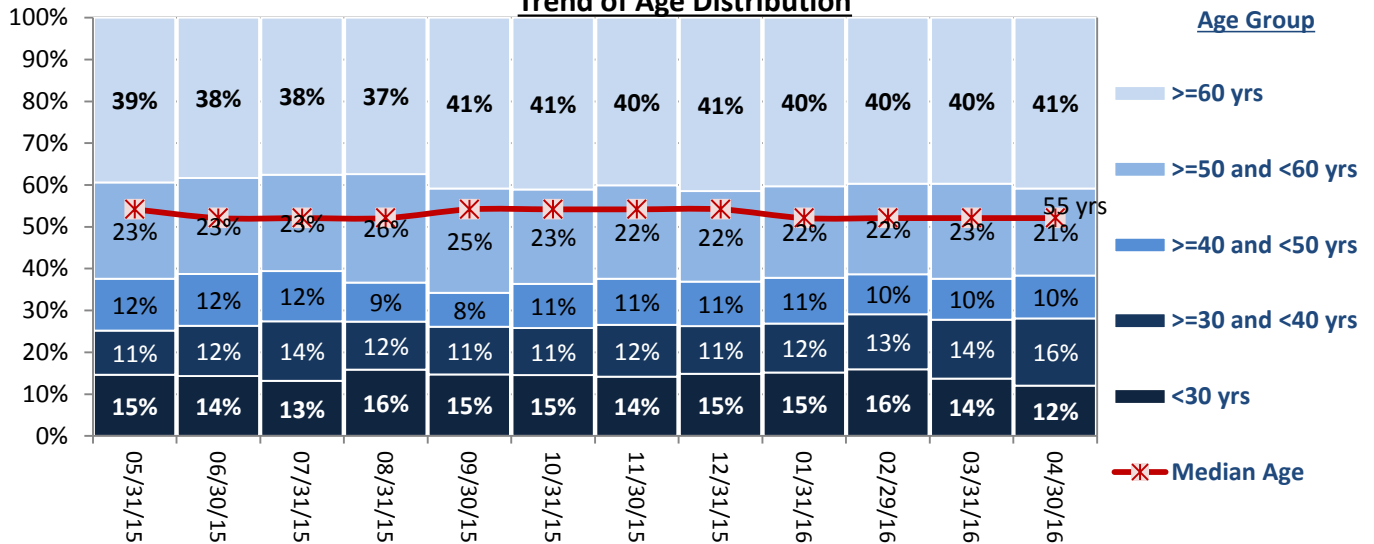
- The proportion of female individuals remaining in the Hospital’s care remained in the range of 30% to 33% throughout FY15 and FY16 to date.
- The percentage of individuals aged 60 years or older remaining in care increase gradually throughout FY15 and continued to remain above 40% during the first 7 months of FY16. The percentage of those under 40 years also gradually increased in the last 12 months due in part to the recent increase in pre-trial admissions, which tend to include more younger individuals.
- The proportion of pre-trial population consistently increased in the last 12 months: on March 31, 2016 and April 30, 2016, 28% of individuals remaining in care were pre-trial population.
- The median Length of Stay (LOS), particularly for civil and post-trial population, continued to increase: the median LOS for civil population as of April 30, 2016 is 623 days (20 months) whereas it was 388 days a year ago on April 30, 2015. Such a significant increase of median LOS for civil population in care is attributed to the decrease of civil discharges over the last several months. The median LOS for post-trial population in care also considerably increased: to 4414 days (12 years and one month) on April 2016 from 4062 days (11 years and one month) a year ago.

**24. Demographics**

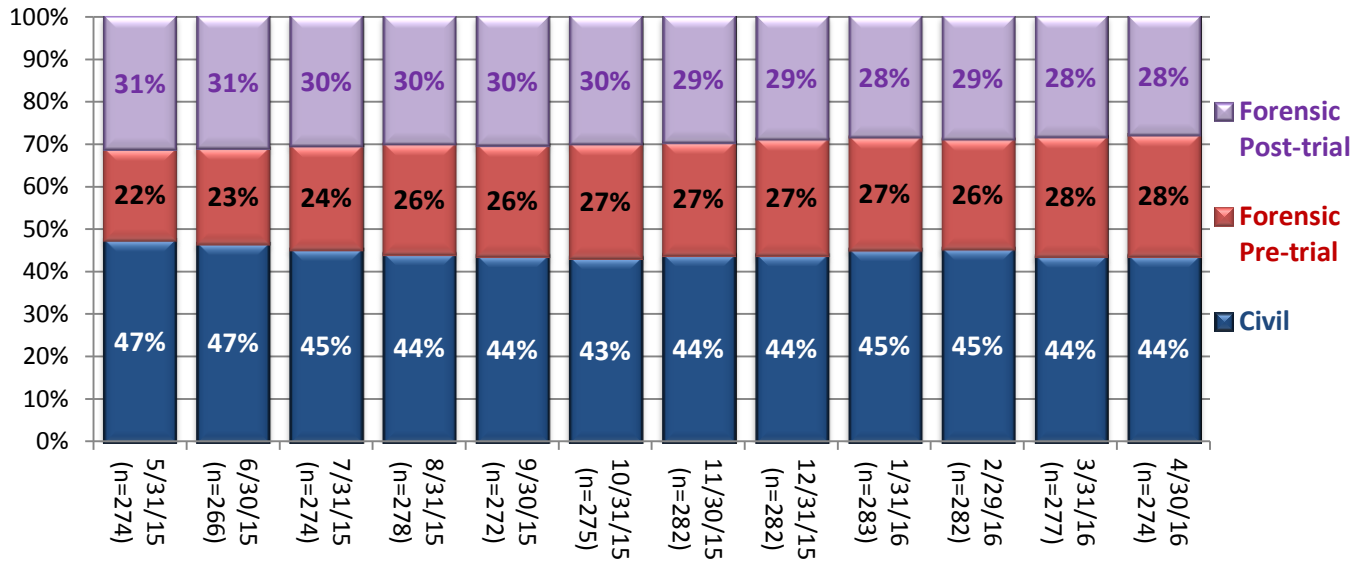
**Trend of Gender Distribution**



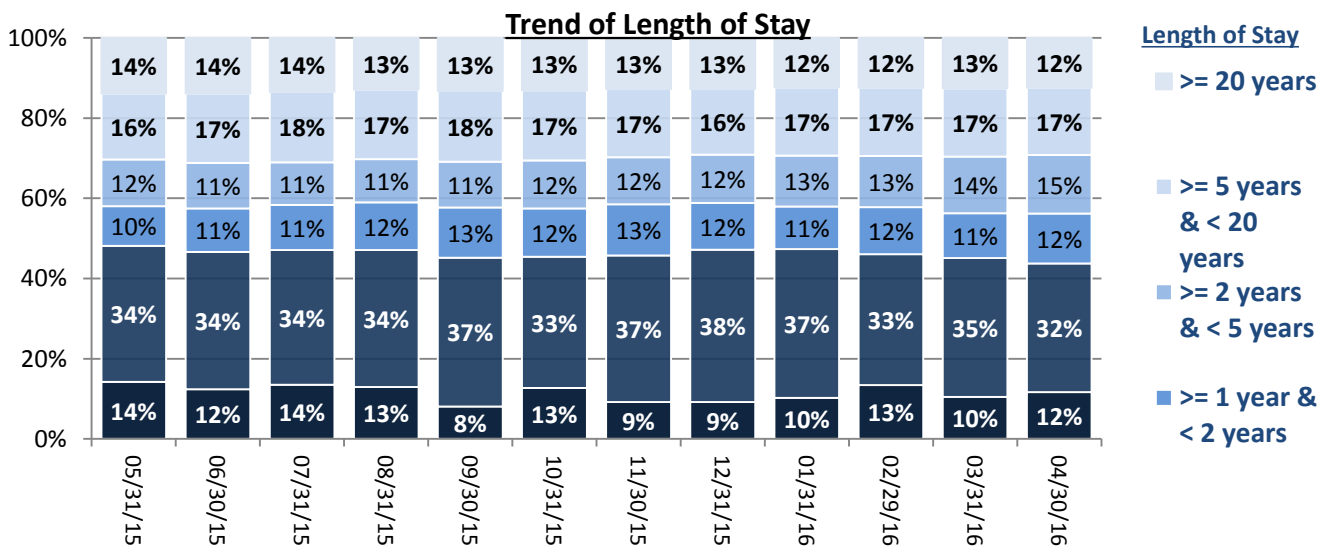
**Trend of Age Distribution**



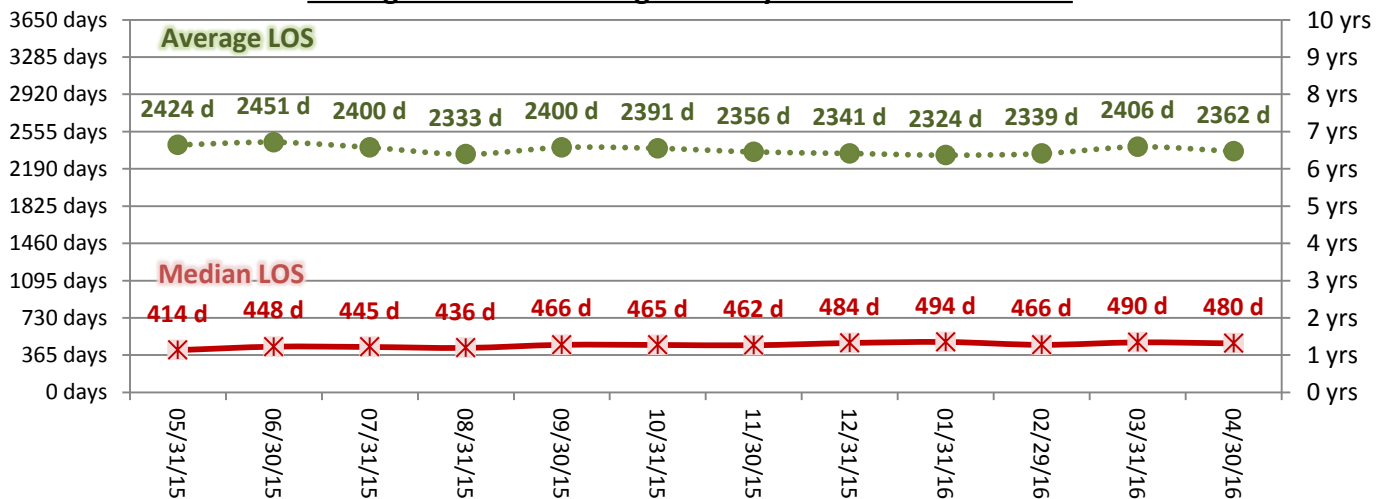
**Trend of Legal Status Distribution**

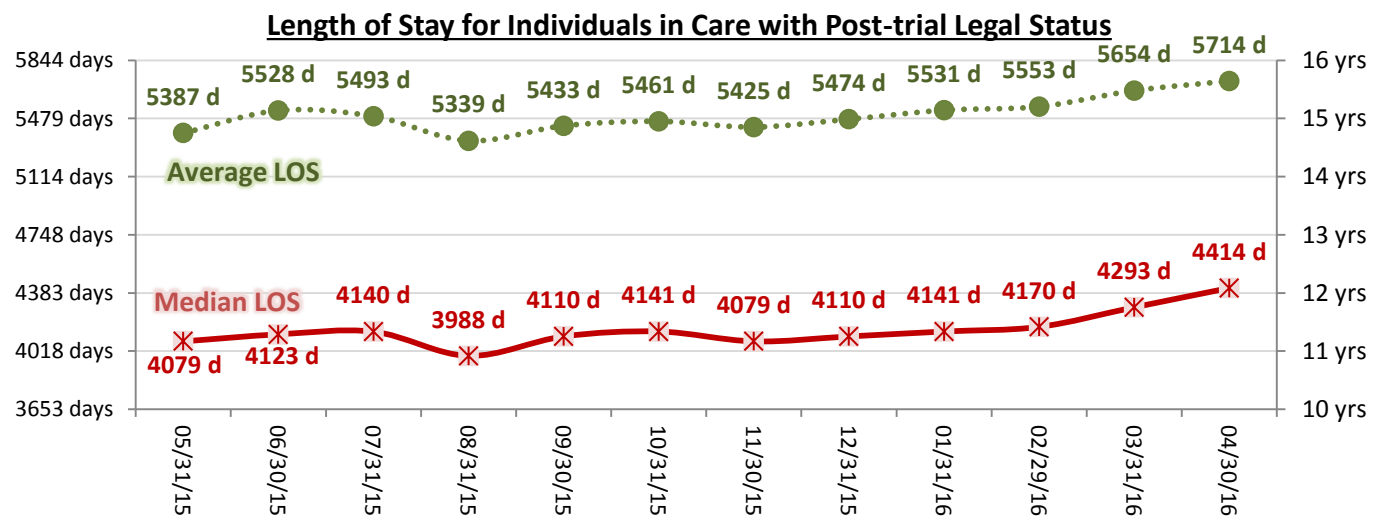
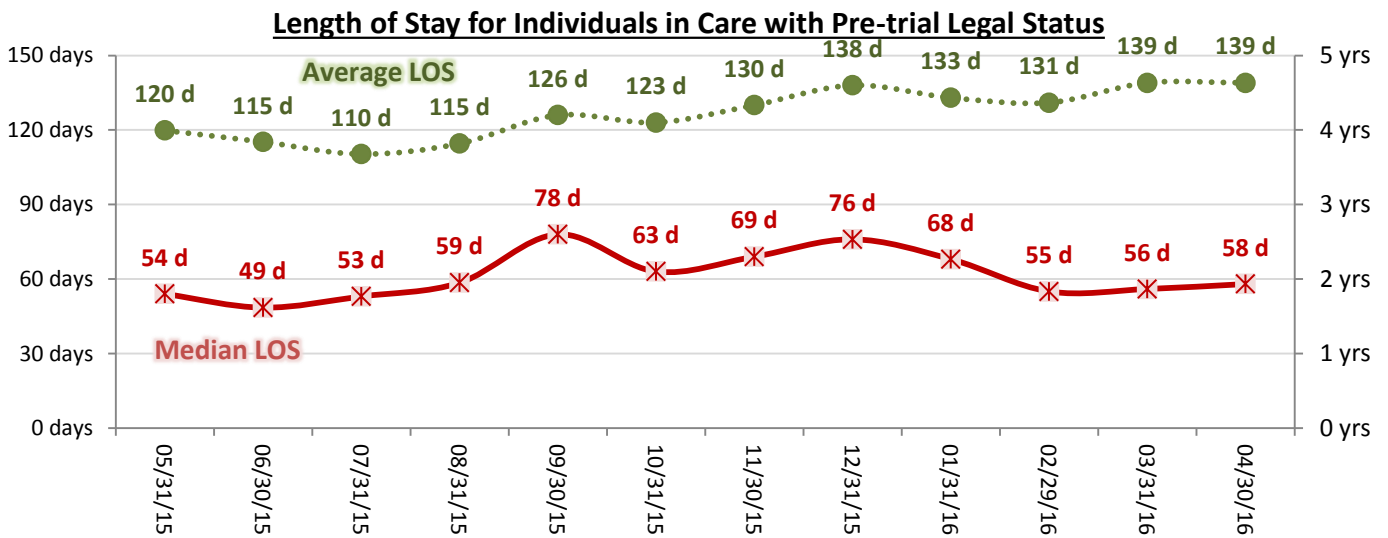
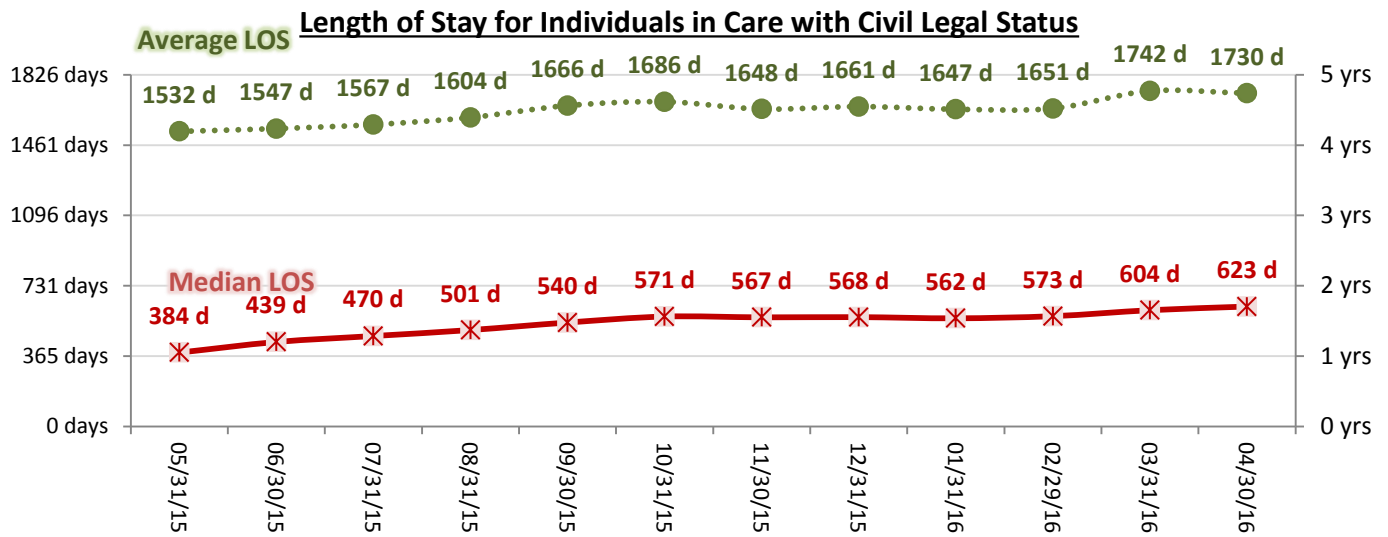


**25. Length of Stay**



**Average and Median Length of Stay for Individuals in Care**





## Performance Related Information for Staff &amp; Managers

## 1. Census, Admissions, Discharges &amp; Transfers

Data Source: Avatar

Updated as of 05/12/16

Category	May-15	Jun-15	Jul-15	Aug-15	Sep-15	Oct-15	Nov-15	Dec-15	Jan-16	Feb-16	Mar-16	Apr-16	Monthly Average	Total (12mths)	Figure	
Admissions	Civil	16	15	15	14	13	16	11	9	6	12	6	9	12	142	Figure 1
	Pre-trial	22	20	25	22	14	25	16	17	25	25	23	25	22	259	
	Post-trial	4	1	1	2	0	1	1	3	2	2	1	1	2	19	
	<b>Total</b>	<b>42</b>	<b>36</b>	<b>41</b>	<b>38</b>	<b>27</b>	<b>42</b>	<b>28</b>	<b>29</b>	<b>33</b>	<b>39</b>	<b>30</b>	<b>35</b>	<b>35</b>	<b>420</b>	
Discharges	Civil	22	25	17	17	18	17	9	10	8	15	15	11	15	184	Figure 2
	Pre-trial	16	15	16	15	14	21	12	14	21	24	17	24	17	209	
	Post-trial	3	4	0	2	1	1	0	5	3	1	3	3	2	26	
	<b>Total</b>	<b>41</b>	<b>44</b>	<b>33</b>	<b>34</b>	<b>33</b>	<b>39</b>	<b>21</b>	<b>29</b>	<b>32</b>	<b>40</b>	<b>35</b>	<b>38</b>	<b>35</b>	<b>419</b>	
Net Increase During Month	Civil	-6	-10	-2	-3	-5	-1	2	-1	-2	-3	-9	-2		-42	
	Pre-trial	6	5	9	7	0	4	4	3	4	1	6	1		50	
	Post-trial	1	-3	1	0	-1	0	1	-2	-1	1	-2	-2		-7	
	<b>Total</b>	<b>1</b>	<b>-8</b>	<b>8</b>	<b>4</b>	<b>-6</b>	<b>3</b>	<b>7</b>	<b>0</b>	<b>1</b>	<b>-1</b>	<b>-5</b>	<b>-3</b>		<b>1</b>	
All Individuals on Roll at End of Month	<b>274</b>	<b>266</b>	<b>274</b>	<b>278</b>	<b>272</b>	<b>275</b>	<b>282</b>	<b>282</b>	<b>283</b>	<b>282</b>	<b>277</b>	<b>274</b>	<b>277</b>			
a. Present on Unit	269	264	271	275	267	268	278	277	282	273	271	267	272			
b. On AL	5	2	3	3	5	7	4	4	1	9	6	6	5			
c. On UL	0	0	0	0	0	0	0	1	0	0	0	1	0			
All Individuals on Roll: <u>Daily</u> Average during Month*	<b>272</b>	<b>270</b>	<b>270</b>	<b>275</b>	<b>275</b>	<b>277</b>	<b>280</b>	<b>280</b>	<b>282</b>	<b>282</b>	<b>279</b>	<b>279</b>	<b>277</b>			
a. Present on Unit	269	264	266	272	270	272	276	275	277	276	272	273	272			
b. On AL	3	6	4	3	5	5	4	4	4	6	7	6	3.8			
c. On UL	0	0	0	0	0	0	0	1	0	0	0	0	0.10			
Patient Days**	<b>8349</b>	<b>7925</b>	<b>8247</b>	<b>8435</b>	<b>8114</b>	<b>8439</b>	<b>8277</b>	<b>8537</b>	<b>8599</b>	<b>8009</b>	<b>8436</b>	<b>8200</b>	<b>8297</b>	<b>99567</b>		
Inter-Unit Transfers during Month	<b>22</b>	<b>14</b>	<b>14</b>	<b>6</b>	<b>13</b>	<b>20</b>	<b>11</b>	<b>9</b>	<b>10</b>	<b>9</b>	<b>6</b>	<b>14</b>	<b>12</b>	<b>148</b>	Figure 4	
Medical Leaves Initiated during Month	Emergency	18	20	15	10	13	8	10	13	15	18	12	10	14	162	
	Non-Emer	81	96	95	89	69	86	72	72	54	68	66	66	76	914	
	<b>Total</b>	<b>99</b>	<b>116</b>	<b>110</b>	<b>99</b>	<b>82</b>	<b>94</b>	<b>82</b>	<b>85</b>	<b>69</b>	<b>86</b>	<b>78</b>	<b>76</b>	<b>90</b>	<b>1076</b>	
Non-Medical Leaves Initiated during Month	<b>251</b>	<b>323</b>	<b>374</b>	<b>322</b>	<b>290</b>	<b>356</b>	<b>341</b>	<b>390</b>	<b>298</b>	<b>364</b>	<b>389</b>	<b>316</b>	<b>335</b>	<b>4014</b>		
UL Initiated during Month	<b>1</b>	<b>1</b>	<b>1</b>	<b>0</b>	<b>0</b>	<b>0</b>	<b>0</b>	<b>1</b>	<b>0</b>	<b>1</b>	<b>1</b>	<b>2</b>	<b>1</b>	<b>8</b>		
Total Unique Patients Served during Month	<b>314</b>	<b>305</b>	<b>305</b>	<b>311</b>	<b>302</b>	<b>312</b>	<b>302</b>	<b>308</b>	<b>312</b>	<b>320</b>	<b>310</b>	<b>312</b>	<b>309</b>			
30 Day Readmission ***	Civil	1	2	1	1	1	1	1	1	0	1		1	11		
	Pre-trial	0	0	0	0	0	0	0	0	1	0	0	0	1		
	Post-trial	0	0	0	0	0	0	0	0	1	0	0	0	1		
	<b>Total</b>	<b>1</b>	<b>2</b>	<b>1</b>	<b>1</b>	<b>1</b>	<b>1</b>	<b>1</b>	<b>1</b>	<b>3</b>	<b>0</b>	<b>1</b>	<b>1</b>	<b>13</b>		

\* This is the average number of individuals served on a given day for the respective month. Due to rounding from average calculation, numbers from its subcategories a, b, & c may not add up to the total number on this row.

\*\* It counts the number of patients who are present on the unit and excludes those on authorized or unauthorized leave at 11:59pm on a given day.

\*\*\* Number of patients returning within 30 days of discharges that occurred during month.

## Performance Related Information for Staff &amp; Managers

## 2. Key Performance Indicators

Data Source: UI DB, MV DB, ADR DB, Restraint/Seclusion Log, and Avatar

Updated as of 05/12/16

Category	May-15	Jun-15	Jul-15	Aug-15	Sep-15	Oct-15	Nov-15	Dec-15	Jan-16	Feb-16	Mar-16	Apr-16	Monthly Average	NPR* (Jun-13)	Figure
30 Day Readmit (Discharge Cohort)**	Civil	4.5%	8.0%	5.9%	5.9%	5.6%	5.9%	11.1%	10.0%	12.5%	0.0%	6.7%	6.5%		Figure 5
	Pre-trial	0.0%	0.0%	0.0%	0.0%	0.0%	0.0%	0.0%	0.0%	4.8%	0.0%	0.0%	0.5%		
	Post-trial	0.0%	0.0%	N/A	0.0%	0.0%	0.0%	N/A	0.0%	33.3%	0.0%	0.0%	4.2%		
	Combined	2.4%	4.5%	3.0%	2.9%	3.0%	2.6%	4.8%	3.4%	9.4%	0.0%	2.9%	3.4%	6.9%	
Number of Unusual Incidents*	274	220	231	202	222	254	155	144	184	187	189	195	205		Figure 6
Patient Unusual Incident Rate	30.7	26.0	26.8	22.2	25.3	28.9	17.9	15.9	19.8	21.7	21.1	23.0	23.2		Figure 7
UI by Severity	Catastrophe	0	0	0	0	0	0	0	0	0	0	0	0		Figure 9
	High	69	27	22	22	37	20	15	29	25	28	25	30		
	Medium	108	73	79	65	84	100	31	43	42	52	49	65		
	Low	97	120	130	115	101	112	104	86	113	110	112	115		
Physical Assault Incident Rate	9.2	6.2	5.8	5.3	7.6	8.8	5.6	4.5	5.3	5.4	5.2	7.3	6.3		
Selected Types of Incidents	Physical Assault	77	49	48	45	62	74	46	38	46	43	44	60	53	Figure 10
	Aggressive Behav.	93	61	83	75	83	103	52	50	67	69	66	69	73	
	Psych Emergency	96	25	39	28	59	55	22	7	19	20	19	27	35	
	Fall	32	28	31	33	23	25	25	22	26	24	25	33	27	
	Injury	50	24	36	31	39	45	23	14	31	34	25	32	32	
Physical Assaults by Severity	High	29	10	5	4	9	20	7	3	8	11	8	9	13	Figure 11
	Medium	23	21	12	19	25	36	11	8	15	17	15	22	19	
	Low	25	18	31	22	28	18	28	27	23	15	21	29	24	
Patient Injury Rate***	0.36	0.13	0.12	0.36	0.37	0.12	0.36	0.12	0.00	0.12	0.24	0.24	0.21	0.38	
Patients with Major Injuries***	3	1	1	3	3	1	3	1	0	1	2	2	2		Figure 12
Total Patients Injured***	29	17	26	20	32	34	15	9	25	23	12	24	22		
Total Staff Injured***	32	12	8	10	10	23	10	6	8	21	12	10	14		Figure 13
Patient Fall Rate	3.47	3.15	3.64	3.79	2.71	3.08	3.02	2.34	3.14	3.00	2.84	4.02	3.18		Figure 14
Total Patients who Fell	29	25	30	32	22	26	25	20	27	24	24	33	26		
Total Staff who Fell	5	3	1	2	2	4	0	3	0	4	2	1	2		
Percent of Patients Restrained	10.2%	8.2%	6.9%	5.8%	7.9%	10.9%	5.6%	6.2%	7.7%	8.1%	11.6%	10.6%	1.4%	5.8%	Figure 15
Percent of Patients Secluded	3.5%	3.3%	2.0%	4.8%	4.3%	5.1%	4.0%	3.2%	5.1%	4.1%	3.5%	4.2%	3.9%	2.4%	
Restraint Hours Rate	0.098	0.074	0.163	0.008	0.031	0.086	0.052	0.032	0.038	0.123	0.142	0.207	0.087	0.71	Figure 16
Seclusion Hours Rate	0.060	0.150	0.067	0.062	0.260	0.281	0.043	0.047	0.099	0.136	0.093	0.196	0.124	0.44	Figure 16
Elopement Rate	0.12	0.13	0.12	0.00	0.00	0.00	0.00	0.12	0.00	0.12	0.12	0.24	0.09	0.13	Figure 17
Medication Variance Rate	2.16	1.51	2.06	1.42	1.73	4.27	2.90	4.22	2.33	1.62	1.66	2.93	2.41		Figure 18
Adverse Drug Reaction Rate	0.36	0.38	0.24	0.36	0.12	0.00	0.36	0.23	0.23	0.00	0.00	0.00	0.19		Figure 19
Missing Med-Admin Documentation	0.62%	0.93%	0.76%	0.50%	0.42%	0.47%	0.33%	0.44%	0.46%	0.52%	0.49%	0.56%	0.54%		Figure 20
Percent of Medication Refusal	7.23%	5.92%	5.88%	6.17%	5.57%	6.90%	7.44%	6.44%	5.84%	6.15%	5.91%	6.11%	6.30%		Figure 21
SiteFM Work Orders Completed within 3 days	65%	73%	67%	63%	70%	75%	75%	74%	67%	53%	62%	73%	67%		Figure 23
Total SiteFM Work Orders	436	561	543	515	503	509	435	466	456	522	557	569	506		
Total SiteFM Work Orders	667	768	816	821	715	682	581	632	682	982	900	784	753		

\* National Public Rate, NASMHPD Research Institute, National Research Institute (NRI), Data as of June 2013, Published in November 2013.

\*\* Percentage of patients returning within 30 days of discharges that occurred during month

\*\*\* Refer to the next page [UI &amp; Medication]



Performance Related Information for Staff & Managers

3. Unusual Incident & Medication

Data Source: UI DB, MV DB, ADR DB, and Avatar

Updated as of 05/12/16

Category		May-15	Jun-15	Jul-15	Aug-15	Sep-15	Oct-15	Nov-15	Dec-15	Jan-16	Feb-16	Mar-16	Apr-16	Monthly Average	Total (12mths)	NPR* (Jun-13)
Unusual Incidents (excluding MV)**	Total UIs	274	220	231	202	222	254	155	144	184	187	189	195	205	2457	
	Major UIs Only	225	130	126	115	141	154	91	95	115	110	114	114	128	1530	
	Pt Involved UI Only	256	206	221	187	205	244	148	136	170	174	178	189	193	2314	
	Patient UI Rate	30.7	26.0	26.8	22.2	25.3	28.9	17.9	15.9	19.8	21.7	21.1	23.0		23.2	
	Unique Pts Involved in UI	138	104	132	111	117	127	112	105	110	117	122	122	118	1417	
Selected Types of Incidents	Physical Assault	77	49	48	45	62	74	46	38	46	43	44	60	53	632	
	Aggressive Behavior	93	61	83	75	83	103	52	50	67	69	66	69	73	871	
	Psych Emergency	96	25	39	28	59	55	22	7	19	20	19	27	35	416	
	Fall	32	28	31	33	23	25	25	22	26	24	25	33	27	327	
	Injury	50	24	36	31	39	45	23	14	31	34	25	32	32	384	
	Physical Assault Rate	9.2	6.2	5.8	5.3	7.6	8.8	5.6	4.5	5.3	5.4	5.2	7.3		6.3	
UI by Severity	Catastrophe	0	0	0	0	0	0	0	0	0	0	0	0	0	0	
	High	69	27	22	22	37	42	20	15	29	25	28	25	30	361	
	Medium	108	73	79	65	84	100	31	43	42	52	49	55	65	781	
	Low	97	120	130	115	101	112	104	86	113	110	112	115	110	1315	
Physical Assaults by Severity	High	29	10	5	4	9	20	7	3	8	11	8	9	13	123	
	Medium	23	21	12	19	25	36	11	8	15	17	15	22	19	224	
	Low	25	18	31	22	28	18	28	27	23	15	21	29	24	285	
	Total Patients who Fell	29	25	30	32	22	26	25	20	27	24	24	33	26	317	
	Patient Fall Rate	3.47	3.15	3.64	3.79	2.71	3.08	3.02	2.34	3.14	3.00	2.84	4.02		3.18	
	Total Staff who Fell	5	3	1	2	2	4	0	3	0	4	2	1	2	27	
	Total Patients Injured***	29	17	26	20	32	34	15	9	25	23	12	24	22	266	
	Patients with Major Injuries***	3	1	1	3	3	1	3	1	0	1	2	2	2	21	
	Patient Injury Rate***	0.36	0.13	0.12	0.36	0.37	0.12	0.36	0.12	0.00	0.12	0.24	0.24		0.21	0.38
	Total Staff Injured**	32	12	8	10	10	23	10	6	8	21	12	10	14		
	Total UIs Documented in Avatar	1	1	1	0	0	0	0	1	0	1	1	2	1	9	
	Elopement Rate	0.12	0.13	0.12	0.00	0.00	0.00	0.00	0.12	0.00	0.12	0.12	0.24		0.09	0.13
	Med Variance (MV) Reports**	18	12	17	12	14	36	24	36	20	13	14	24	20	240	
	MV Rate	2.16	1.51	2.06	1.42	1.73	4.27	2.90	4.22	2.33	1.62	1.66	2.93		2.41	
	Adverse Drug Reactions Reports	3	3	2	3	1	0	3	2	2	0	0	0	2	19	
	ADR Rate	0.36	0.38	0.24	0.36	0.12	0.00	0.36	0.23	0.23	0.00	0.00	0.00		0.19	
	Total Med Administrations Scheduled	101673	98847	101726	104695	99956	105811	102613	105331	111076	103422	108400	105969		1249519	
	Total Missing Documentations	626	923	777	522	423	500	336	459	513	539	533	593		6744	
	Percent of Missing Documentation	0.62%	0.93%	0.76%	0.50%	0.42%	0.47%	0.33%	0.44%	0.46%	0.52%	0.49%	0.56%		0.54%	
	Total Medication Doses Refused	7352	5856	5977	6463	5572	7303	7635	6788	6487	6356	6403	6480		78672	
	Percent of Medication Refusal	7.23%	5.92%	5.88%	6.17%	5.57%	6.90%	7.44%	6.44%	5.84%	6.15%	5.91%	6.11%		6.30%	
	Total STAT Orders	252	159	141	138	182	251	112	149	110	138	128	164	160		Figure 22
	Total STAT Events****	116	68	66	62	83	119	53	66	52	71	52	80	74		
	Total Individuals Involved >=1 STAT	42	33	31	34	38	49	31	18	37	37	29	25	34		
	Total Patients with >=3 STAT Events	15	7	7	7	11	15	2	5	3	6	6	7	8		

\* National Public Rate, NASMHPD Research Institute, National Research Institute (NRI), Data as of June 2013, Published in November 2013.

\*\* Numbers may change if any additional UI report is made after the data run date from UI database (around the 15th of the following month); According to the revised UI policy as of November 4, 2013, a medication variance (MV) incident became no longer considered to be an unusual incident, and a medication or vital sign refusal incident is not longer an UI as of May 2014. UI data for the past 12 months in this report has been updated to reflect this change and reanalyzed in order to show the UI trend in consistent logic.

\*\*\* Injury is broadly defined to include any type of injuries regardless of the cause or severity level. The total number of patients injured represents all of the reported injuries including minor injuries treated with first aid alone. However, the patient injury rate considers only the number of patient injuries that required beyond first-aid level treatment based on the NRI definition and the patient injury rate is the number of 'major' patient injuries per every 1000 inpatient days

\*\*\*\* One STAT event may involve more than one STAT order for the same patient. Any orders placed within 20 minute timeframe are considered to belong to one STAT event.

## Performance Related Information for Staff &amp; Managers

## 4. Restraint &amp; Seclusion

Data Source: Restraint/Seclusion Log and UI DB (for # of total events and patients) and Avatar (for patient days/hours)

Updated as of 05/12/16

Category		May-15	Jun-15	Jul-15	Aug-15	Sep-15	Oct-15	Nov-15	Dec-15	Jan-16	Feb-16	Mar-16	Apr-16	Monthly Average	Total (12mths)	NPR* (Jun-13)
Number of Restraint Events	Mechanical	16	5	15	1	3	8	1	3	4	10	10	10	7.2	86	
	Physical Hold	61	35	26	27	38	67	21	20	34	37	36	36	36.5		
	Total	77	40	41	28	41	75	22	23	38	47	46	46	43.7		
Number of Unique Patients Restrained	Mechanical	7	5	4	1	2	6	1	1	3	6	9	9	4.5		
	Physical Hold	25	20	17	17	22	28	16	18	21	20	27	24	21.3		
	Total	32	25	21	18	24	34	17	19	24	26	36	33	25.8		
Percentage of Patients Restrained**	Mechanical	2.2%	1.6%	1.3%	0.3%	0.7%	1.9%	0.3%	0.3%	1.0%	1.9%	2.9%	2.9%	1.4%		
	Physical Hold	8.0%	6.6%	5.6%	5.5%	7.3%	9.0%	5.3%	5.8%	6.7%	6.3%	8.7%	7.7%	6.9%		
	Total	10.2%	8.2%	6.9%	5.8%	7.9%	10.9%	5.6%	6.2%	7.7%	8.1%	11.6%	10.6%	8.3%		5.8%
Total Restraint Hours (h:mm)**	Mechanical	18:37	13:22	31:37	0:05	2:45	10:48	8:35	4:55	5:17	19:50	26:37	38:36	15:05	181:04	
	Physical Hold	1:01	0:47	0:37	1:36	3:22	6:35	1:42	1:35	2:36	3:43	2:08	2:11	2:19	6 mths	
	Total	19:38	14:09	32:14	1:41	6:07	17:23	10:17	6:30	7:53	23:33	28:45	40:47	17:24	6 mths	
Restraint Hours Rate**	Mechanical	0.093	0.070	0.160	0.000	0.014	0.053	0.043	0.024	0.026	0.103	0.131	0.196	0.076	12 mths	
	Physical Hold	0.005	0.004	0.003	0.008	0.017	0.033	0.009	0.008	0.013	0.019	0.011	0.011	0.012	6 mths	
	Total	0.098	0.074	0.163	0.008	0.031	0.086	0.052	0.032	0.038	0.123	0.142	0.207	0.087	6 mths	0.71
Number of Seclusion Events		20	21	14	18	37	40	13	12	22	17	16	22	21.0	252	
Number of Unique Patients Secluded		11	10	6	15	13	16	12	10	16	13	11	13	12.2		
Percentage of Patients Secluded		3.5%	3.3%	2.0%	4.8%	4.3%	5.1%	4.0%	3.2%	5.1%	4.1%	3.5%	4.2%	3.9%		2.4%
Total Seclusion Hours (h:mm)		12:02	28:28	13:18	12:36	50:35	56:52	8:33	9:38	20:22	26:08	18:52	38:38	24:40	296:02	
Seclusion Hours Rate		0.060	0.150	0.067	0.062	0.260	0.281	0.043	0.047	0.099	0.136	0.093	0.196		0.124	0.44

\* National Public Rate, NASMHPD Research Institute, National Research Institute (NRI), Data as of June 2013, Published in November 2013.

\*\* Restraint data prior to April 2015 includes only mechanical restraints. The Hospital's restraint policy has been revised to consider a physical hold a restraint and data as of April 2015 reflects this change. The duration of each physical hold event is counted as one (1) minute as a physical hold is ordered/used only as a temporary intervention that lasts less than a minute to break up any physical altercations or to administer emergency medications.

Performance Related Information for Staff & Managers

5. Major Unusual Incidents by Incident Location/Unit

Data Source: UI DB

Updated as of 05/12/16

Category		May-15	Jun-15	Jul-15	Aug-15	Sep-15	Oct-15	Nov-15	Dec-15	Jan-16	Feb-16	Mar-16	Apr-16	Monthly Average	Total (12mths)	Percent
<b>Total Unusual Incidents</b>		<b>274</b>	<b>220</b>	<b>231</b>	<b>202</b>	<b>222</b>	<b>254</b>	<b>155</b>	<b>144</b>	<b>184</b>	<b>187</b>	<b>189</b>	<b>195</b>	<b>205</b>	<b>2457</b>	<b>100%</b>
Incident Location	1A	16	18	8	8	16	6	6	13	9	11	8	7	11	126	5%
	1B	8	7	15	21	19	18	21	20	7	12	12	18	15	178	7%
	1C	33	22	8	19	12	15	12	14	13	14	16	14	16	192	8%
	1D	29	18	37	17	22	24	11	11	30	30	21	27	23	277	11%
	1E	37	14	27	15	29	21	9	6	14	8	10	5	16	195	8%
	1F	46	28	18	17	30	46	16	15	14	16	18	32	25	296	12%
	1G	12	14	21	21	12	17	13	15	20	13	14	25	16	197	8%
	2A	7	5	14	4	14	11	0	8	10	4	3	4	7	84	3%
	2B	5	3	5	3	4	1	4	2	3	9	8	6	4	53	2%
	2C	9	20	24	14	15	35	17	12	12	23	27	18	19	226	9%
	2D	22	24	23	23	14	27	16	7	20	12	14	14	18	216	9%
	TLC	25	32	14	18	17	26	23	8	19	17	22	13	20	234	10%
	Other	25	15	17	22	18	7	7	13	13	18	16	12	15	183	7%
<b>Physical Assault</b>		<b>77</b>	<b>49</b>	<b>48</b>	<b>45</b>	<b>62</b>	<b>74</b>	<b>46</b>	<b>38</b>	<b>46</b>	<b>43</b>	<b>44</b>	<b>60</b>	<b>53</b>	<b>632</b>	<b>100%</b>
Incident Location	1A	3	4	3	1	2	0	2	6	1	0	3	1	2	26	4%
	1B	0	0	0	3	1	1	5	3	0	0	2	4	2	19	3%
	1C	15	4	2	8	4	4	5	3	6	1	6	4	5	62	10%
	1D	6	3	9	2	6	9	3	3	7	14	7	10	7	79	13%
	1E	6	5	6	4	10	4	2	1	5	1	1	0	4	45	7%
	1F	20	14	8	4	17	28	5	6	6	3	5	15	11	131	21%
	1G	1	6	5	7	6	4	1	4	4	2	2	11	4	53	8%
	2A	0	0	1	0	2	1	0	0	1	1	0	1	1	7	1%
	2B	0	0	0	0	0	0	0	6	1	1	1	0	1	9	1%
	2C	3	3	6	3	4	11	9	2	8	8	4	5	6	66	10%
	2D	8	4	6	10	4	7	5	2	4	5	2	6	5	63	10%
	TLC - Intensive	7	5	2	3	2	5	7	1	1	6	5	3	4	47	7%
	TLC - Transitional	2	0	0	0	2	0	2	1	2	1	3	0	1	13	2%
	Other	6	1	0	0	2	0	0	0	0	0	3	0	1	12	2%

Performance Related Information for Staff & Managers

5. Major Unusual Incidents by Incident Location/Unit

Data Source: UI DB

Updated as of 05/12/16

Category		May-15	Jun-15	Jul-15	Aug-15	Sep-15	Oct-15	Nov-15	Dec-15	Jan-16	Feb-16	Mar-16	Apr-16	Monthly Average	Total (12mths)	Percent
<b>Aggressive Behavior</b>		<b>93</b>	<b>61</b>	<b>83</b>	<b>75</b>	<b>83</b>	<b>103</b>	<b>52</b>	<b>50</b>	<b>67</b>	<b>69</b>	<b>66</b>	<b>69</b>	<b>73</b>	<b>871</b>	<b>138%</b>
Incident Location	1A	0	2	1	1	1	4	1	4	0	4	1	1	2	20	3%
	1B	0	0	2	9	7	2	5	4	2	4	0	1	3	36	6%
	1C	9	9	3	7	3	4	5	9	3	8	8	9	6	77	12%
	1D	15	11	14	6	11	10	4	6	18	13	10	14	11	132	21%
	1E	21	5	11	6	14	15	4	3	5	5	1	1	8	91	14%
	1F	19	6	5	4	9	12	4	6	3	6	9	12	8	95	15%
	1G	8	3	10	11	3	8	6	5	8	5	4	5	6	76	12%
	2A	3	2	11	3	10	7	0	3	3	2	0	2	4	46	7%
	2B	0	0	1	0	0	0	0	0	2	2	1	0	1	6	1%
	2C	2	7	6	5	6	17	2	1	7	8	18	12	8	91	14%
	2D	6	5	12	10	8	15	7	3	10	2	6	4	7	88	14%
	TLC - Intensive	4	6	1	3	4	5	8	2	0	5	4	3	4	45	7%
	TLC - Transitional	5	4	4	3	4	2	4	1	4	0	4	3	3	38	6%
	Other	1	1	2	7	3	2	2	3	2	5	0	2	3	30	5%
<b>Psych Emergency</b>		<b>96</b>	<b>25</b>	<b>39</b>	<b>28</b>	<b>59</b>	<b>55</b>	<b>22</b>	<b>7</b>	<b>19</b>	<b>20</b>	<b>19</b>	<b>27</b>	<b>35</b>	<b>416</b>	<b>66%</b>
Incident Location	1A	0	0	1	0	0	1	0	0	0	0	0	0	0	2	0%
	1B	0	0	2	5	4	3	1	0	0	0	0	0	1	15	2%
	1C	19	2	4	2	2	2	2	1	2	0	3	2	3	41	6%
	1D	16	5	9	3	9	12	7	3	10	12	7	4	8	97	15%
	1E	20	5	7	3	15	7	1	1	2	0	1	0	5	62	10%
	1F	26	9	3	3	14	13	3	0	2	3	2	15	8	93	15%
	1G	2	1	5	3	3	2	2	1	1	1	1	1	2	23	4%
	2A	3	1	4	1	5	5	0	0	0	0	0	0	2	19	3%
	2B	0	0	0	0	0	0	0	0	1	0	0	0	0	1	0%
	2C	0	0	0	2	3	5	2	1	1	2	4	3	2	23	4%
	2D	3	2	1	2	1	2	2	0	0	0	0	0	1	13	2%
	TLC - Intensive	1	0	2	1	1	2	1	0	0	1	0	1	1	10	2%
	TLC - Transitional	4	0	1	1	0	1	1	0	0	0	1	1	1	10	2%
	Other	2	0	0	2	2	0	0	0	0	1	0	0	1	7	1%

Performance Related Information for Staff & Managers

5. Major Unusual Incidents by Incident Location/Unit

Data Source: UI DB

Updated as of 05/12/16

Category		May-15	Jun-15	Jul-15	Aug-15	Sep-15	Oct-15	Nov-15	Dec-15	Jan-16	Feb-16	Mar-16	Apr-16	Monthly Average	Total (12mths)	Percent
<b>Fall</b>		<b>32</b>	<b>28</b>	<b>31</b>	<b>33</b>	<b>23</b>	<b>25</b>	<b>25</b>	<b>22</b>	<b>26</b>	<b>24</b>	<b>25</b>	<b>33</b>	<b>27</b>	<b>327</b>	<b>100%</b>
Incident Location	1A	8	8	3	3	9	1	2	3	2	3	3	4	4	49	15%
	1B	2	5	9	8	7	5	8	4	2	3	6	7	6	66	20%
	1C	2	0	0	0	1	1	1	1	1	1	0	0	1	8	2%
	1D	1	0	1	2	0	2	0	1	0	1	3	1	1	12	4%
	1E	1	2	2	3	1	2	2	0	4	1	3	3	2	24	7%
	1F	2	1	6	2	0	3	1	1	2	3	2	3	2	26	8%
	1G	2	4	1	4	0	1	2	5	7	1	1	4	3	32	10%
	2A	2	0	2	0	1	1	0	1	0	0	0	0	1	7	2%
	2B	2	1	1	3	0	0	1	0	0	4	0	3	1	15	5%
	2C	0	1	1	0	1	5	4	2	2	4	0	3	2	23	7%
	2D	3	3	1	2	1	0	0	2	3	1	2	2	2	20	6%
	TLC - Intensive	4	1	1	2	0	4	3	1	2	0	1	1	2	20	6%
	TLC - Transitional	0	0	1	1	0	0	1	1	1	0	1	0	1	6	2%
	Other	3	2	2	3	2	0	0	0	0	2	3	2	2	19	6%
<b>Physical Injury</b>		<b>50</b>	<b>24</b>	<b>36</b>	<b>31</b>	<b>39</b>	<b>45</b>	<b>23</b>	<b>14</b>	<b>31</b>	<b>34</b>	<b>25</b>	<b>32</b>	<b>32</b>	<b>384</b>	<b>100%</b>
Incident Location	1A	3	1	2	0	1	0	1	1	2	0	0	1	1	12	3%
	1B	2	0	0	3	3	1	2	1	1	3	0	4	2	20	5%
	1C	11	2	2	8	7	3	0	0	5	0	4	1	4	43	11%
	1D	6	3	6	4	4	9	3	2	5	8	6	5	5	61	16%
	1E	5	3	2	3	3	1	1	0	2	1	3	0	2	24	6%
	1F	8	6	5	3	9	17	5	2	5	3	1	10	6	74	19%
	1G	0	1	2	2	3	3	1	1	1	2	1	3	2	20	5%
	2A	1	0	1	0	1	1	0	0	0	0	0	0	0	4	1%
	2B	1	1	1	1	2	0	1	1	1	2	1	2	1	14	4%
	2C	1	2	3	0	3	5	4	3	1	5	1	3	3	31	8%
	2D	3	3	3	3	1	3	0	1	3	3	2	2	2	27	7%
	TLC - Intensive	4	1	5	0	1	2	4	0	3	3	3	1	2	27	7%
	TLC - Transitional	2	0	0	0	0	0	0	0	1	1	1	0	0	5	1%
	Other	3	1	4	4	1	0	1	2	1	3	2	0	2	22	6%

\* Not every incident is a major incident. This counts only those incidents that were classified to be major based on the policy.

## Performance Related Information for Staff &amp; Managers

## 6A. Demographic Information of Individuals in Care

Data Source: Avatar

Updated as of 05/12/16

Category	Sub-group	May-15	Jun-15	Jul-15	Aug-15	Sep-15	Oct-15	Nov-15	Dec-15	Jan-16	Feb-16	Mar-16	Apr-16	Monthly Average	Percent*
<b>Total Active (on Roll) at End of Month*</b>		<b>274</b>	<b>266</b>	<b>274</b>	<b>278</b>	<b>272</b>	<b>275</b>	<b>282</b>	<b>282</b>	<b>283</b>	<b>282</b>	<b>277</b>	<b>274</b>	<b>277</b>	
<b>Gender</b>	Female	87	81	85	85	81	85	88	92	89	87	87	87	<b>86</b>	<b>31.2%</b>
	Male	187	185	189	193	191	190	194	190	194	195	190	187	<b>190</b>	<b>68.8%</b>
<b>Age</b>	<b>Median Age (Years)</b>	<b>56 yrs</b>	<b>55 yrs</b>	<b>55 yrs</b>	<b>55 yrs</b>	<b>56 yrs</b>	<b>56 yrs</b>	<b>56 yrs</b>	<b>56 yrs</b>	<b>55 yrs</b>	<b>55 yrs</b>	<b>55 yrs</b>	<b>55 yrs</b>	<b>55 yrs</b>	<b>Figure 24</b>
	<30 years old	40	38	36	44	40	40	40	42	43	45	38	33	<b>40</b>	<b>14.4%</b>
	>=30 and <40 years old	29	32	39	32	31	31	35	32	33	37	39	44	<b>35</b>	<b>12.5%</b>
	>=40 and <50 years old	34	33	33	26	22	29	31	30	31	27	27	28	<b>29</b>	<b>10.6%</b>
	>=50 and <60 years old	63	61	63	72	68	62	63	61	62	61	63	57	<b>63</b>	<b>22.8%</b>
	>=60 years old	108	102	103	104	111	113	113	117	114	112	110	112	<b>110</b>	<b>39.7%</b>
<b>Legal Status of Individuals on Roll at End of Month</b>	Emergency	38	32	32	25	25	24	23	26	15	20	17	16	<b>24</b>	<b>8.8%</b>
	Inpatient Commitment	34	34	33	33	32	28	30	31	35	35	34	34	<b>33</b>	<b>11.8%</b>
	Outpatient Commitment	21	22	22	28	25	27	30	26	34	31	29	31	<b>27</b>	<b>9.8%</b>
	Voluntary	37	36	37	37	37	40	41	41	44	42	41	39	<b>39</b>	<b>14.2%</b>
	Non-Protesting	0	0	0	0	0	0	0	0	0	0	0	0	<b>0</b>	<b>0.0%</b>
	<b>Civil Sub-total</b>	<b>130</b>	<b>124</b>	<b>124</b>	<b>123</b>	<b>119</b>	<b>119</b>	<b>124</b>	<b>124</b>	<b>128</b>	<b>128</b>	<b>121</b>	<b>120</b>	<b>124</b>	<b>44.7%</b>
	DC Exam	39	30	35	36	39	43	46	46	37	37	44	42	<b>40</b>	<b>14.3%</b>
	Mentally Incompetent	20	30	32	36	32	31	29	31	38	36	34	36	<b>32</b>	<b>11.6%</b>
	<b>Forensic Pre-trial Sub-total</b>	<b>59</b>	<b>60</b>	<b>67</b>	<b>72</b>	<b>71</b>	<b>74</b>	<b>75</b>	<b>77</b>	<b>75</b>	<b>73</b>	<b>78</b>	<b>78</b>	<b>72</b>	<b>25.9%</b>
	NGBRI - DC	72	69	70	71	70	70	71	68	67	68	66	65	<b>69</b>	<b>24.9%</b>
	NGBRI - US	9	9	9	8	8	8	8	8	8	7	7	6	<b>8</b>	<b>2.9%</b>
	NGBRI - VI	1	1	1	1	1	1	1	1	1	1	1	1	<b>1</b>	<b>0.4%</b>
	Dual Commitment	0	0	0	0	0	0	0	0	0	0	0	0	<b>0</b>	<b>0.0%</b>
	Post Trial Mental Exam PTME	0	0	0	0	0	0	0	1	1	2	1	1	<b>1</b>	<b>0.2%</b>
Sexual Psychopath (Miller Act)	3	3	3	3	3	3	3	3	3	3	3	3	<b>3</b>	<b>1.1%</b>	
<b>Forensic Post-trial Sub-total</b>	<b>85</b>	<b>82</b>	<b>83</b>	<b>83</b>	<b>82</b>	<b>82</b>	<b>83</b>	<b>81</b>	<b>80</b>	<b>81</b>	<b>78</b>	<b>76</b>	<b>81</b>	<b>29.4%</b>	
<b>Length of Stay</b>	<30 Days	39	33	37	36	22	35	26	26	29	38	29	32	<b>32</b>	<b>11.5%</b>
	>=30 ~ <365 Days	93	91	92	95	101	90	103	107	105	92	96	88	<b>96</b>	<b>34.7%</b>
	>= 1 Year & < 2 Years	27	29	31	33	34	33	36	33	30	33	31	34	<b>32</b>	<b>11.6%</b>
	>= 2 Years & < 5 Years	32	30	29	30	31	33	33	34	36	36	39	40	<b>34</b>	<b>12.1%</b>
	>= 5 Years & < 20 Years	45	46	48	48	48	48	48	46	48	48	47	46	<b>47</b>	<b>17.1%</b>
	>= 20 Years	38	37	37	36	36	36	36	36	35	35	35	34	<b>36</b>	<b>13.0%</b>
	<b>Median LOS (Days)</b>	<b>414 d</b>	<b>448 d</b>	<b>445 d</b>	<b>436 d</b>	<b>466 d</b>	<b>465 d</b>	<b>462 d</b>	<b>484 d</b>	<b>494 d</b>	<b>466 d</b>	<b>496 d</b>	<b>475 d</b>	<b>463 d</b>	<b>Figure 25</b>
	Median LOS - Civil	384 d	439 d	470 d	501 d	540 d	571 d	567 d	568 d	562 d	573 d	604 d	626 d	534 d	
	Median LOS - Pre-trial	54 d	49 d	53 d	59 d	78 d	63 d	69 d	76 d	68 d	55 d	56 d	58 d	61 d	
	Median LOS - Post-trial	4079 d	4123 d	4140 d	3988 d	4110 d	4141 d	4079 d	4110 d	4141 d	4170 d	4293 d	4323 d	4141 d	
	<b>Average LOS (Days)</b>	<b>2424 d</b>	<b>2451 d</b>	<b>2400 d</b>	<b>2333 d</b>	<b>2400 d</b>	<b>2391 d</b>	<b>2356 d</b>	<b>2341 d</b>	<b>2324 d</b>	<b>2339 d</b>	<b>2406 d</b>	<b>2362 d</b>	<b>2377 d</b>	
Average LOS - Civil	1532 d	1547 d	1567 d	1604 d	1666 d	1686 d	1648 d	1661 d	1647 d	1651 d	1742 d	1730 d	1640 d		
Average LOS - Pre-trial	120 d	115 d	110 d	115 d	126 d	123 d	130 d	138 d	133 d	131 d	139 d	139 d	127 d		
Average LOS - Post-trial	5387 d	5528 d	5493 d	5339 d	5433 d	5461 d	5425 d	5474 d	5531 d	5553 d	5654 d	5714 d	5499 d		

\* Counts the total number of individuals who are on the hospital roll at end of each month. This number serves as denominator to calculate percentage of each group.

## Performance Related Information for Staff &amp; Managers

## 6B. Demographic Information of Individuals in Care

Data Source: Avatar

Updated as of 05/12/16

Category	Sub-group	May-15	Jun-15	Jul-15	Aug-15	Sep-15	Oct-15	Nov-15	Dec-15	Jan-16	Feb-16	Mar-16	Apr-16	Monthly Average	Percent*
<b>Total Active (on Roll) at End of Month*</b>		<b>274</b>	<b>266</b>	<b>274</b>	<b>278</b>	<b>272</b>	<b>275</b>	<b>282</b>	<b>282</b>	<b>283</b>	<b>282</b>	<b>277</b>	<b>274</b>	<b>277</b>	
<b>Gender</b>	Female	32%	30%	31%	31%	30%	31%	31%	33%	31%	31%	31%	32%	<b>31%</b>	
	Male	68%	70%	69%	69%	70%	69%	69%	67%	69%	69%	69%	68%	<b>69%</b>	
<b>Age</b>	<b>Median Age (Years)</b>	<b>56 yrs</b>	<b>55 yrs</b>	<b>55 yrs</b>	<b>55 yrs</b>	<b>56 yrs</b>	<b>56 yrs</b>	<b>56 yrs</b>	<b>56 yrs</b>	<b>55 yrs</b>	<b>55 yrs</b>	<b>55 yrs</b>	<b>55 yrs</b>	<b>55 yrs</b>	
	<30 yrs	15%	14%	13%	16%	15%	15%	14%	15%	15%	16%	14%	12%	<b>14%</b>	
	>=30 and <40 yrs	11%	12%	14%	12%	11%	11%	12%	11%	12%	13%	14%	16%	<b>12%</b>	
	>=40 and <50 yrs	12%	12%	12%	9%	8%	11%	11%	11%	11%	10%	10%	10%	<b>11%</b>	
	>=50 and <60 yrs	23%	23%	23%	26%	25%	23%	22%	22%	22%	22%	23%	21%	<b>23%</b>	
	>=60 yrs	39%	38%	38%	37%	41%	41%	40%	41%	40%	40%	40%	41%	<b>40%</b>	
<b>Legal Status of Individuals on Roll at End of Month</b>	Emergency	14%	12%	12%	9%	9%	9%	8%	9%	5%	7%	6%	6%	<b>9%</b>	
	Inpatient Commitment	12%	13%	12%	12%	12%	10%	11%	11%	12%	12%	12%	12%	<b>12%</b>	
	Outpatient Commitment	8%	8%	8%	10%	9%	10%	11%	9%	12%	11%	10%	11%	<b>10%</b>	
	Voluntary	14%	14%	14%	13%	14%	15%	15%	15%	16%	15%	15%	14%	<b>14%</b>	
	Non-Prototyping	0%	0%	0%	0%	0%	0%	0%	0%	0%	0%	0%	0.0%	<b>0%</b>	
	<b>Civil Sub-total</b>	<b>47%</b>	<b>47%</b>	<b>45%</b>	<b>44%</b>	<b>44%</b>	<b>43%</b>	<b>44%</b>	<b>44%</b>	<b>45%</b>	<b>45%</b>	<b>44%</b>	<b>44%</b>	<b>45%</b>	
	DC Exam	14%	11%	13%	13%	14%	16%	16%	16%	13%	13%	16%	15%	<b>14%</b>	
	Mentally Incompetent	7%	11%	12%	13%	12%	11%	10%	11%	13%	13%	12%	13%	<b>12%</b>	
	<b>Forensic Pre-trial Sub-total</b>	<b>22%</b>	<b>23%</b>	<b>24%</b>	<b>26%</b>	<b>26%</b>	<b>27%</b>	<b>27%</b>	<b>27%</b>	<b>27%</b>	<b>26%</b>	<b>28%</b>	<b>28%</b>	<b>26%</b>	
	NGBRI - DC	26%	26%	26%	26%	26%	25%	25%	24%	24%	24%	24%	24%	<b>25%</b>	
	NGBRI - US	3%	3%	3%	3%	3%	3%	3%	3%	3%	2%	3%	2%	<b>3%</b>	
	NGBRI - VI	0%	0%	0%	0%	0%	0%	0%	0%	0%	0%	0%	0%	<b>0%</b>	
	Dual Commitment	0%	0%	0%	0%	0%	0%	0%	0%	0%	0%	0%	0%	<b>0%</b>	
Sexual Psychopath (Miller Ac	1%	1%	1%	1%	1%	1%	1%	1%	1%	1%	1%	1%	<b>1%</b>		
<b>Forensic Post-trial Sub-total</b>	<b>31%</b>	<b>31%</b>	<b>30%</b>	<b>30%</b>	<b>30%</b>	<b>30%</b>	<b>29%</b>	<b>29%</b>	<b>28%</b>	<b>29%</b>	<b>28%</b>	<b>28%</b>	<b>29%</b>		
<b>Length of Stay</b>	<b>Median LOS (Days)</b>	<b>414 d</b>	<b>448 d</b>	<b>445 d</b>	<b>436 d</b>	<b>466 d</b>	<b>465 d</b>	<b>462 d</b>	<b>484 d</b>	<b>494 d</b>	<b>466 d</b>	<b>496 d</b>	<b>475 d</b>	<b>463 d</b>	
	<b>Average LOS (Days)</b>	<b>2424 d</b>	<b>2451 d</b>	<b>2400 d</b>	<b>2333 d</b>	<b>2400 d</b>	<b>2391 d</b>	<b>2356 d</b>	<b>2341 d</b>	<b>2324 d</b>	<b>2339 d</b>	<b>2406 d</b>	<b>2362 d</b>	<b>2377 d</b>	
	<30 days	14%	12%	14%	13%	8%	13%	9%	9%	10%	13%	10%	12%	<b>12%</b>	
	>=30 days & <365 days	34%	34%	34%	34%	37%	33%	37%	38%	37%	33%	35%	32%	<b>35%</b>	
	>= 1 year & < 2 years	10%	11%	11%	12%	13%	12%	13%	12%	11%	12%	11%	12%	<b>12%</b>	
	>= 2 years & < 5 years	12%	11%	11%	11%	11%	12%	12%	12%	13%	13%	14%	15%	<b>12%</b>	
	>= 5 years & < 20 years	16%	17%	18%	17%	18%	17%	17%	16%	17%	17%	17%	17%	<b>17%</b>	
>= 20 years	14%	14%	14%	13%	13%	13%	13%	13%	12%	12%	13%	12%	<b>13%</b>		

\* Counts the total number of individuals who are on the hospital roll at end of each month. This number serves as denominator to calculate percentage of each group.