



Government of the District of Columbia
Department of Behavioral Health (DBH)



PRISM

Performance Related Information for Staff and Managers



JANUARY 2016

Office of Statistics and Reporting (OSR), 02/27/16

Table of Contents

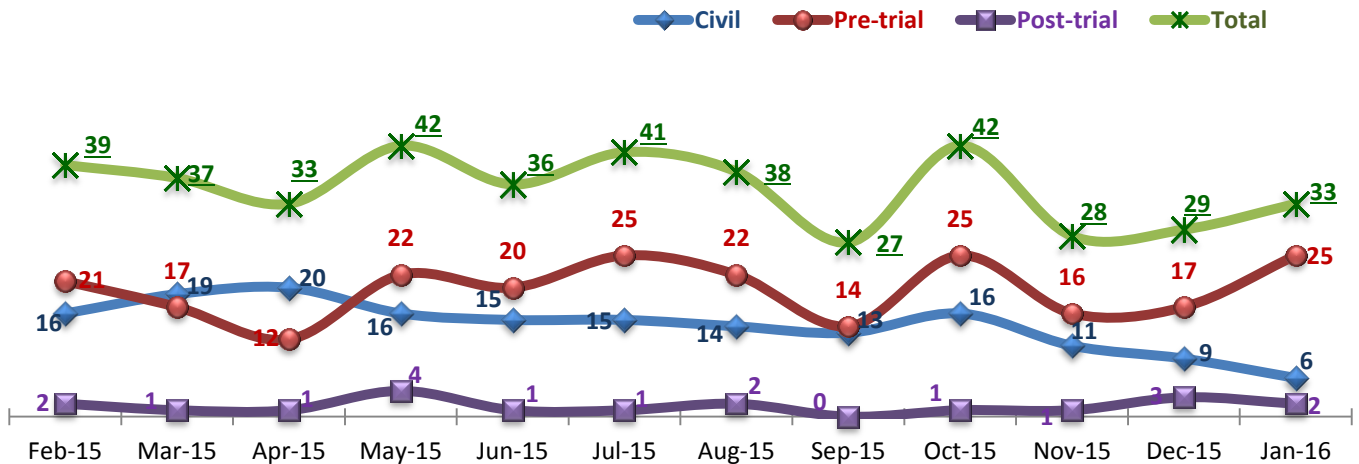
1. Admissions to SEH	1
2. Discharges from SEH	1
3. Average Daily Census.....	2
4. Transfers.....	2
5. 30-Day Readmission Rate	2
6. Unusual Incidents	3
7. Patient-Involved Unusual Incidents	3
8. Admissions vs. Patient UI Rate	4
9. Unusual Incidents by Severity.....	4
10. Selected Types of Incidents	4
11. Physical Assaults by Severity	5
12. Patient Injuries	5
13. Staff Injuries	5
14. Patient and Staff Falls.....	6
15. Percent of Patients Restrained or Secluded	6
16. Restraint Hours Rate & Seclusion Hours Rate	6
17. Elopements.....	7
18. Reported Medication Variance Events.....	7
19. Reported Adverse Drug Reactions	8
20. Percent of Missing Documentation on Med-Administration.....	8
21. Medication Refusal Rate*.....	8
22. Number of STAT Events and Individuals Involved	9
23. Percentage of SiteFM Work Orders Completed within 3 Days	9
24. Demographics.....	10
25. Length of Stay.....	11

- Appendix 1) Table – Census, Admissions & Discharges
- Appendix 2) Table – Key Performance Indicators
- Appendix 3) Table – Unusual Incident & Medication
- Appendix 4) Table – Restraint & Seclusion
- Appendix 5) Table – Unusual Incidents by Unit
- Appendix 6) Table – Demographic Information of Individuals in Care

Key Trends: Admission, Discharge, Transfer, Census, and Readmissions (1~6)

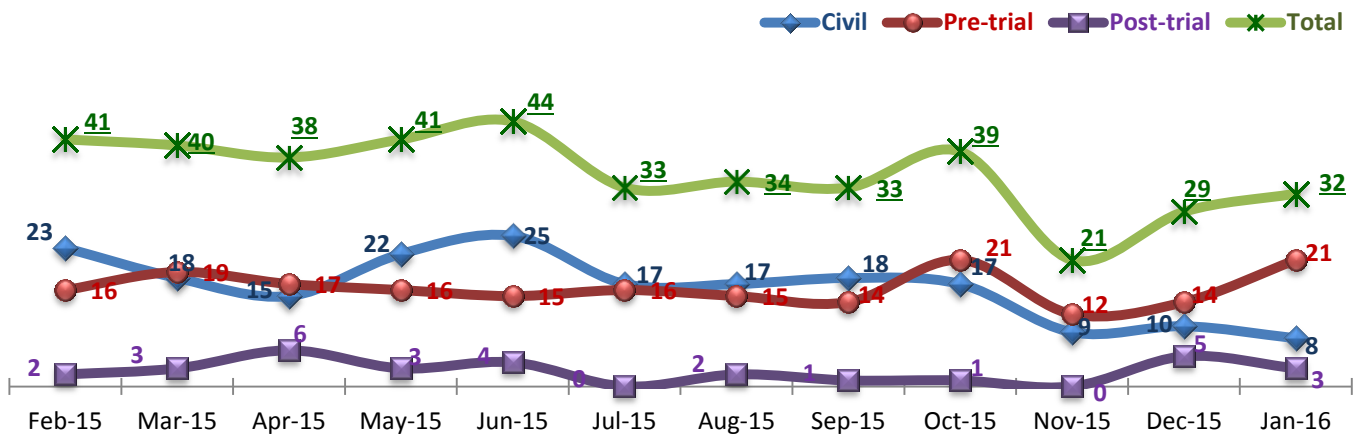
- The number of **admissions** in January 2016 (33) is higher than the number in the previous two months but is lower than the monthly average of FY15 (38 per month). The recent trend of fewer admissions is attributed to the **unavailability of bed space for new admissions** than a decrease in need of admissions.
- The number of **discharges began to decrease noticeably since July 2015**, reaching its lowest point at 21 in November 2015. This decreased discharges resulted in an **increased census** in the last seven (7) consecutive months. In particular, the number of civil discharges continued to decline, reaching a significant low at eight (8) in the month January 2016. This decline of discharges triggered a continued increase of the average daily census (ADC), and the ADC reached 282 in January 2016. The **continued high census** from the lower turnover in beds at the Hospital **affected admissions**: it created a long **waiting list for admissions** and increased the time individuals spent on the waiting list because the Hospital did not have available beds for them. Accordingly, the number of actual admissions to SEH declined.
- The 30-day readmission rate has remained just below the national average (NPR at 6.9%)¹ since May 2015, but all of the **30-day readmissions in the past eight (8) months** are those who were discharged with a **civil legal status**.

1. Admissions to SEH



* Number of admissions to SEH inpatient program, including transfers from forensic outpatient to inpatient program.

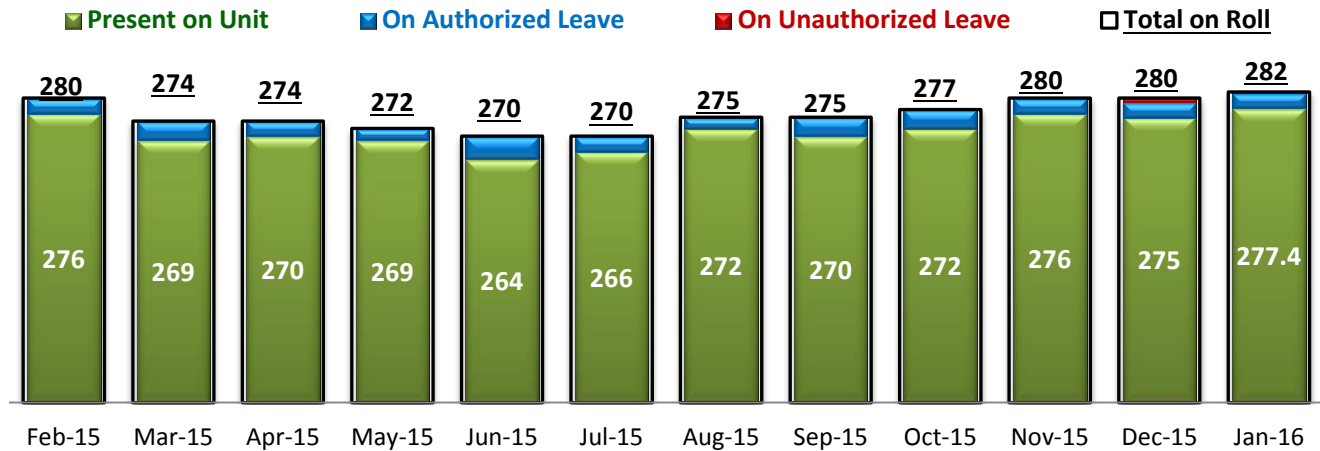
2. Discharges from SEH



* Number of discharges from SEH inpatient program, including transfers from inpatient to forensic outpatient program.

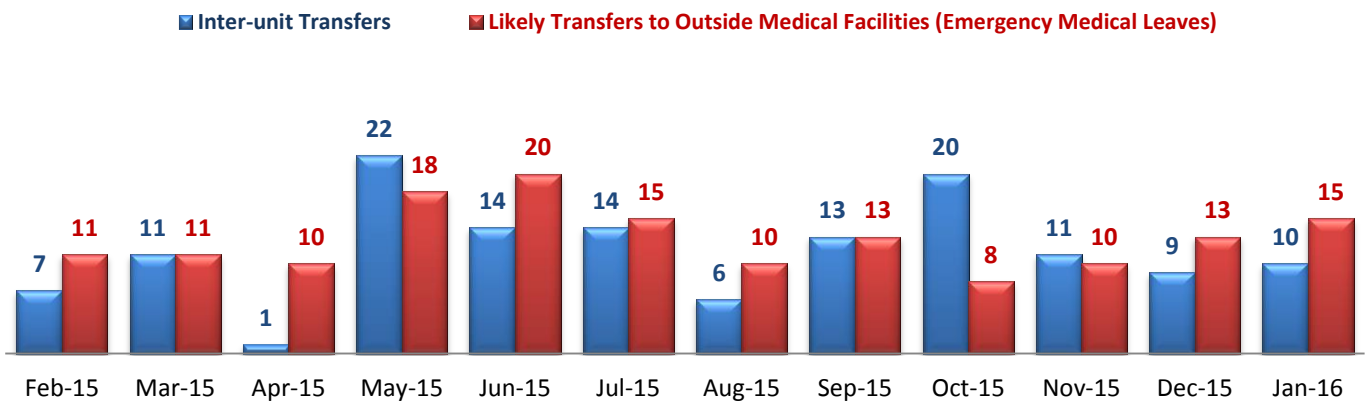
¹ NPR: National Public Rate as of June 2013 was published in November 2013 by National Association of State Mental Health Program Directors Research Institute (NRI), based on data collected from a number of state psychiatric hospitals nationwide.

3. Average Daily Census



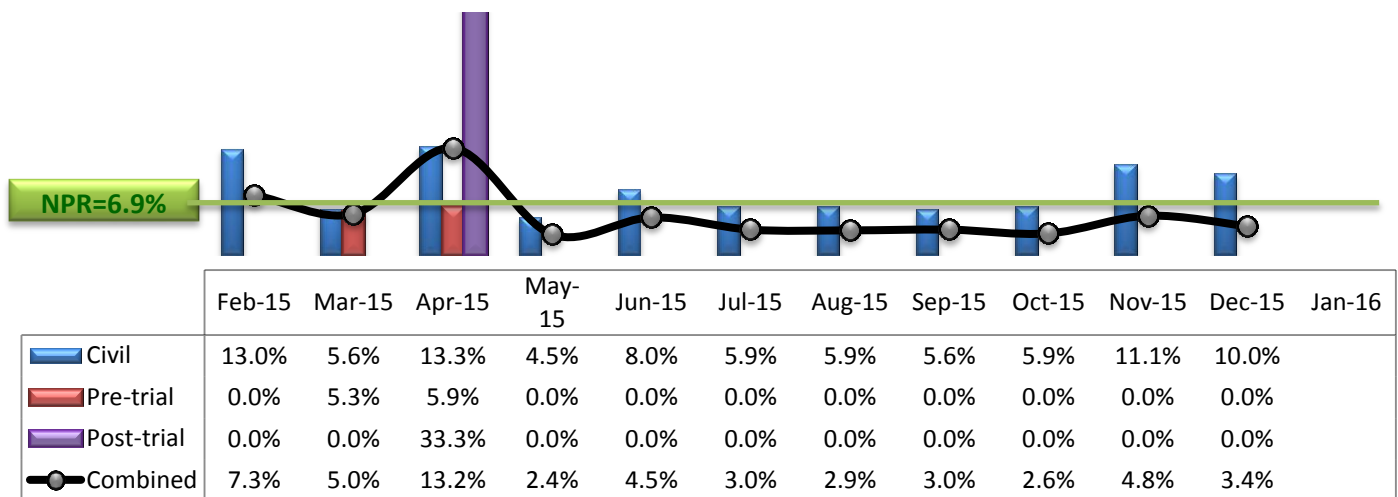
* Data above is the daily average number of individuals counted at 11:59 PM every day during each month.

4. Transfers



* Number of inter-unit transfers that occurred during month and number of emergency medical leaves that were initiated during month.

5. 30-Day Readmission Rate



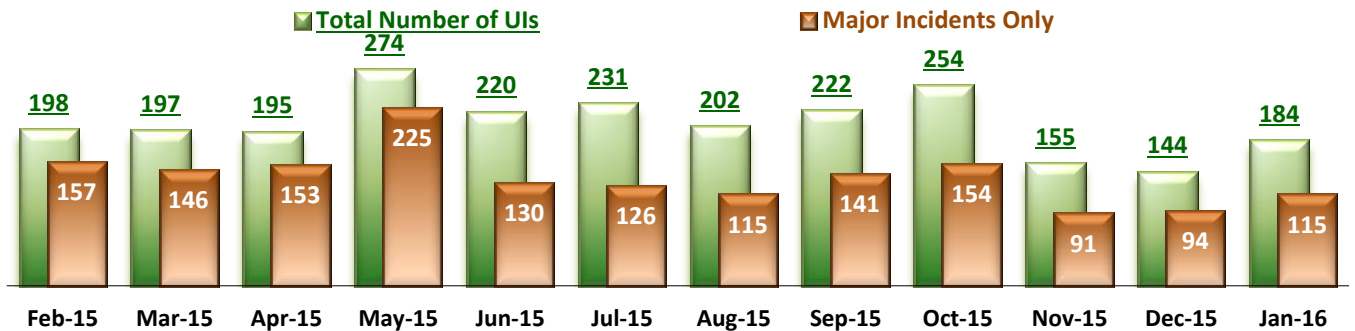
* Percent of discharges that returned to SEH within 30 days of discharges. It does not include those who may have been re-hospitalized at another psychiatric facility. This measure requires 30-day observation following discharge.

** The post-trial denominators (discharges) per month range only between one and six, making the monthly re-admission rate high when there is any. For example, in December 2014, there was only one post-trial discharge, which was readmitted within 30 days. Thus, the 30-day readmission rate for post-trial discharge for this month is 100%.

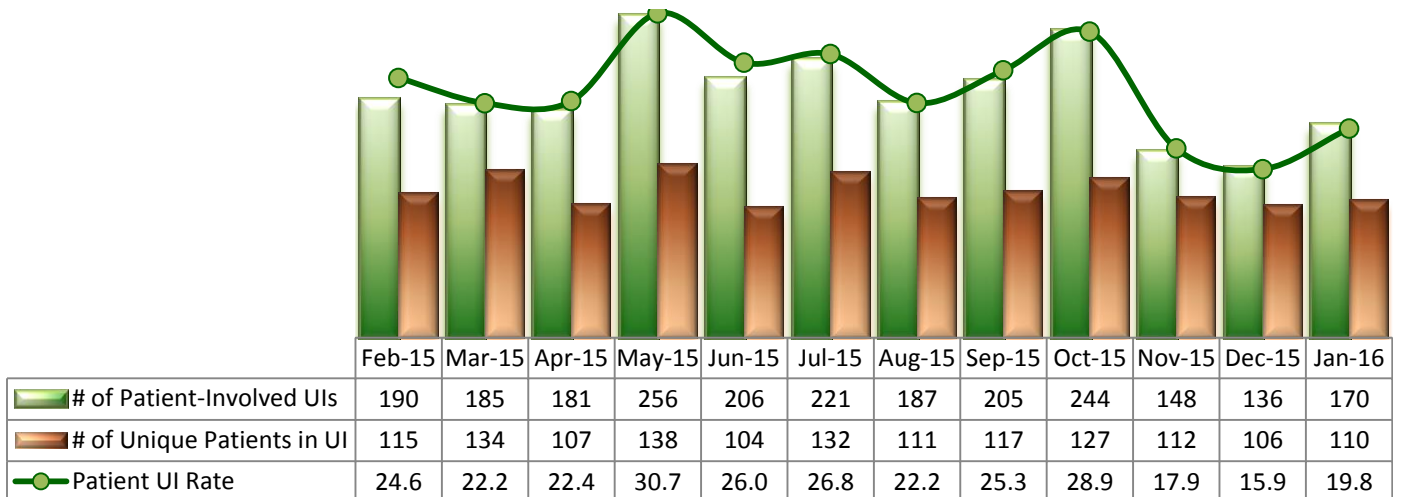
Key Trends: Unusual Incidents (6~17)

- The trend in the number of unusual incidents (UIs), particularly violence related incidents, tends to mirror the trend in the number of admissions as individuals in early stage of hospitalization are more likely to get agitated and be involved in unusual incidents than those who have been in care for a longer period of time. A noticeable decrease in the number of admissions in November and December 2015 contributed to a **significant decrease in the number of UIs and the patient UI rate during those months**, and an increase of admissions in January 2016 affected an increase in the number of UIs for the month.
- In January 2016, the number of **violence related incidents increased in all areas**, including aggressive behaviors and physical assaults, and psychiatric emergencies. However, the frequency of violence related incidents continued to be lower than the average. Particularly, the number of incidents involving psychiatric emergencies was 19, far below the average of the last 12 months (45). It should be noted that some individuals repeatedly participate in violence related incidents: in the month of January, there were a total of 24 unique aggressors who participated in more than one incident of aggressive behavior, physical assault or property destruction. Those 24 individuals made up for about **8% of all served during the month**, and they were **responsible for a total of 78 UIs or 76% of all violence related incidents** in January.
- In January 2016, both the patient injuries and staff injuries declined but there was no major patient injury.
- The use of **restraint and seclusion** both **increased** in January 2016 as did the percentage of unique individuals restrained or secluded. The restraint & seclusion hours rates (0.038 and 0.098 per 1000 patient hours, respectively) continued to be far below the national average (0.71 and 0.44, respectively).
- The **patient fall rate** increased in January 2016 (3.14 per 1000 patient days), and is slightly higher than the average patient fall rate of FY15 (3.11).
- There were no elopements in January 2016.

6. Unusual Incidents

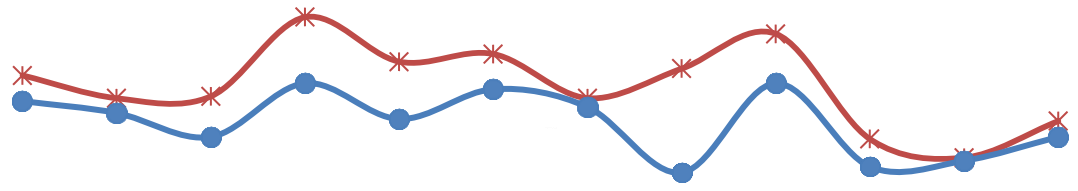


7. Patient-Involved Unusual Incidents



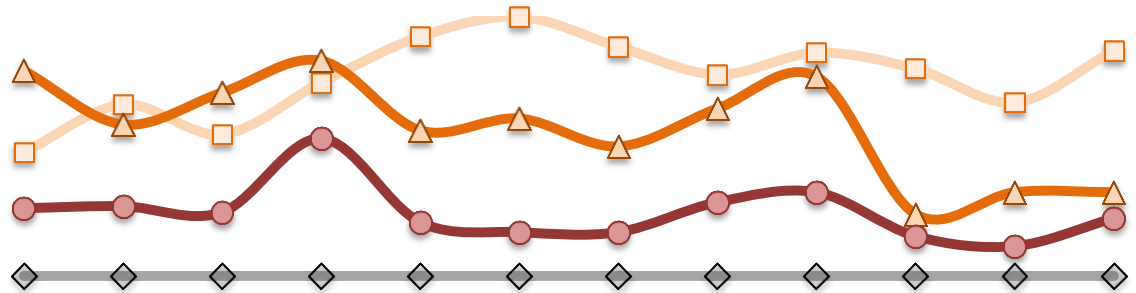
* The patient UI rate is the number of patient-involved unusual incidents reported for every 1000 inpatient days.

8. Admissions vs. Patient UI Rate



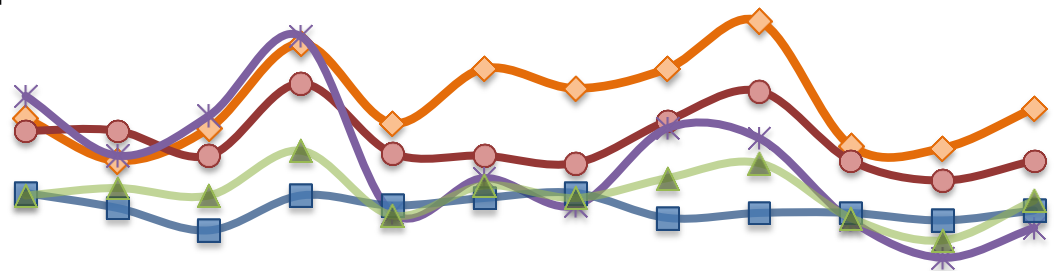
	Feb-15	Mar-15	Apr-15	May-15	Jun-15	Jul-15	Aug-15	Sep-15	Oct-15	Nov-15	Dec-15	Jan-16
—*— Patient UI Rate	24.6	22.2	22.4	30.7	26.0	26.8	22.2	25.3	28.9	17.9	15.9	19.8
—●— Admission	39	37	33	42	36	41	38	27	42	28	29	33

9. Unusual Incidents by Severity



	Feb-15	Mar-15	Apr-15	May-15	Jun-15	Jul-15	Aug-15	Sep-15	Oct-15	Nov-15	Dec-15	Jan-16
□ 1) Low	62	86	71	97	120	130	115	101	112	104	87	113
△ 2) Medium	103	76	92	108	73	79	65	84	100	31	42	42
● 3) High	34	35	32	69	27	22	22	37	42	20	15	29
◇ 4) Catstrp	0	0	0	0	0	0	0	0	0	0	0	0
Total UI	198	197	195	274	220	231	202	222	254	155	144	184

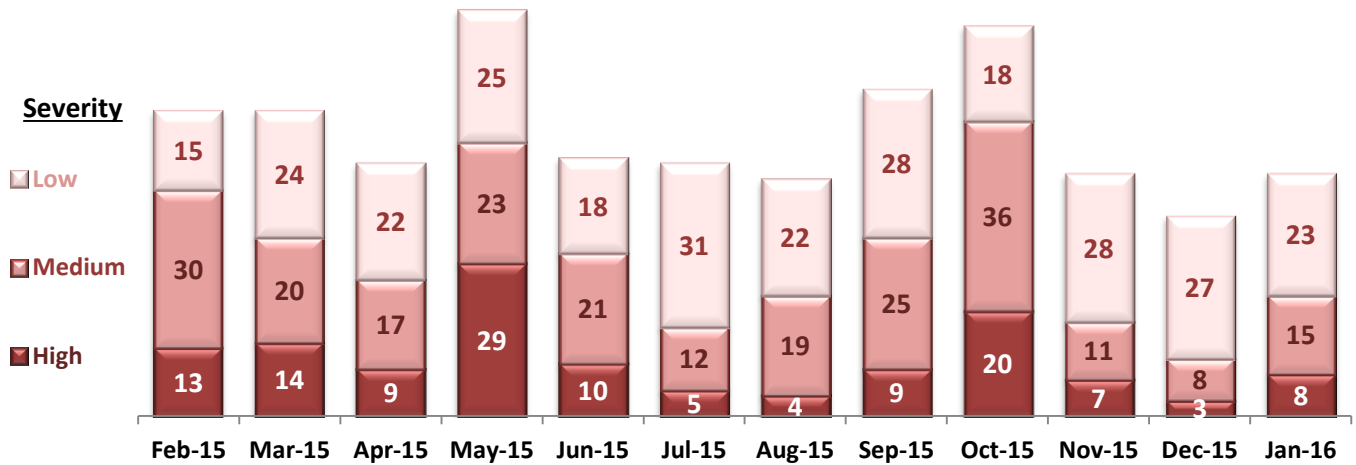
10. Selected Types of Incidents



	Feb-15	Mar-15	Apr-15	May-15	Jun-15	Jul-15	Aug-15	Sep-15	Oct-15	Nov-15	Dec-15	Jan-16
◆ Aggressive Behavior	63	46	59	93	61	83	75	83	102	52	51	67
● Physical Assault	58	58	48	77	49	48	45	62	74	46	38	46
* Pysch Emerg.	72	48	64	96	25	39	28	59	55	22	7	19
■ Fall	33	27	18	32	28	31	33	23	25	25	22	26
▲ Injury	32	35	32	50	24	36	31	39	45	23	14	30

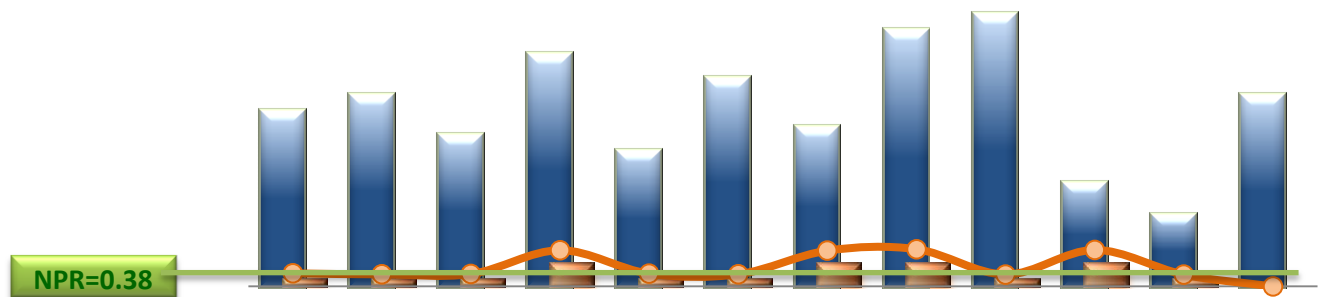
* These are incident types that are frequently reported. Some incidents may be counted in multiple categories. For example, a physical assault incident that accompanied psychiatric emergency and injury is counted under psychiatric emergency and injury as well as under physical assault. Injury is broadly defined to include any type of injuries regardless of the cause or severity level.

11. Physical Assaults by Severity



* Any physical assault that accompanies a code 13 or results in extensive injury needing off-unit treatment or transfer to ER is considered to be high severity; any physical assault that causes a minor injury that can be treated on unit is considered to be medium severity; and physical assault events that result in no injury are considered to be low severity.

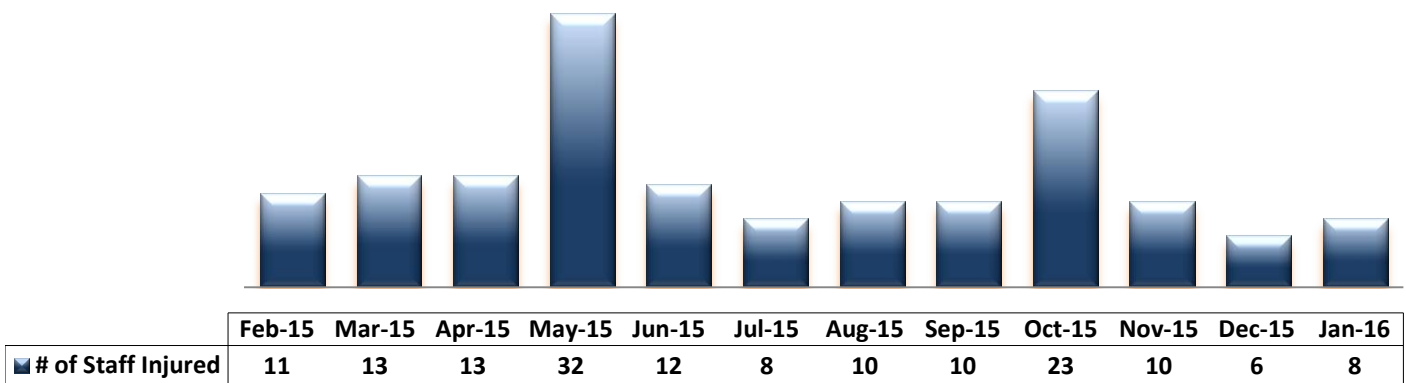
12. Patient Injuries



	Feb-15	Mar-15	Apr-15	May-15	Jun-15	Jul-15	Aug-15	Sep-15	Oct-15	Nov-15	Dec-15	Jan-16
Total Pts Injured	22	24	19	29	17	26	20	32	34	13	9	24
Major Pt Injuries*	1	1	1	3	1	1	3	3	1	3	1	0
Patient Injury Rate	0.13	0.12	0.12	0.36	0.13	0.12	0.36	0.37	0.12	0.36	0.12	0.00

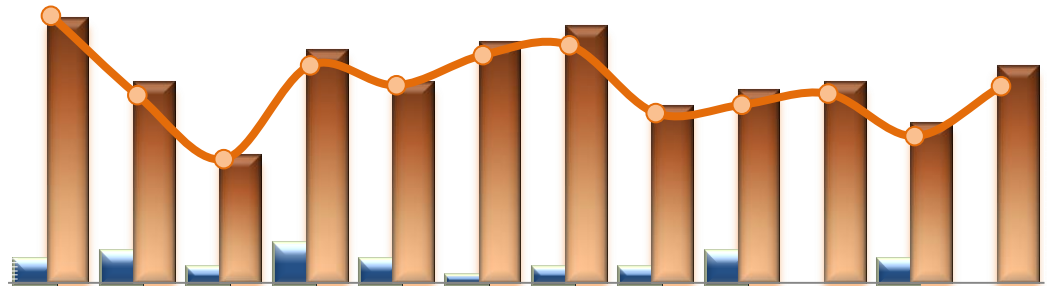
* Injury is broadly defined to include any type of injuries regardless of the cause or severity level. The total number of patients injured represents all of the reported injuries including minor injuries treated with first aid alone. However, the patient injury rate considers only the number of patient injuries that required beyond first-aid level treatment based on the NRI definition and the patient injury rate is the number of 'major' patient injuries per every 1000 inpatient days

13. Staff Injuries



* Injury is broadly defined to include any type of injuries regardless of the cause or severity level. The total number of staff injured represents all of the reported staff injuries including minor injuries treated with first aid alone.

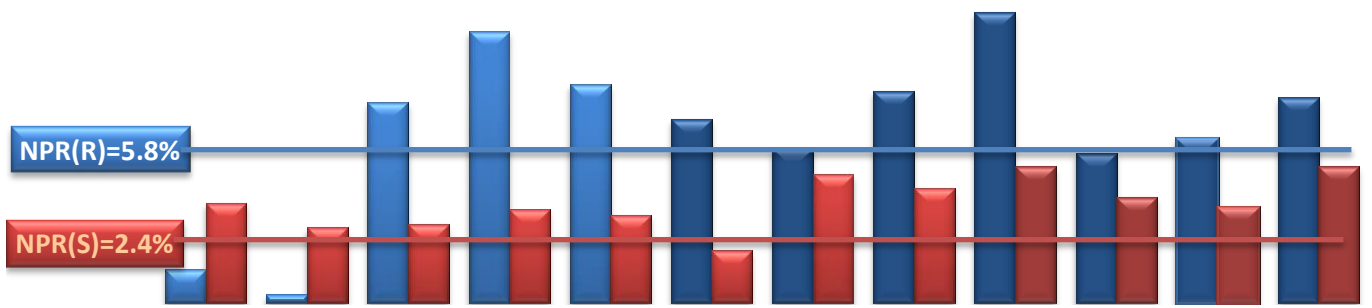
14. Patient and Staff Falls



	Feb-15	Mar-15	Apr-15	May-15	Jun-15	Jul-15	Aug-15	Sep-15	Oct-15	Nov-15	Dec-15	Jan-16
Total Staff who Fell	3	4	2	5	3	1	2	2	4	0	3	0
Total Patients who Fell	33	25	16	29	25	30	32	22	24	25	20	27
Patient Fall Rate	4.26	2.99	1.98	3.47	3.15	3.64	3.79	2.71	2.84	3.02	2.34	3.14

* The patient fall rate is the number of patient falls per every 1000 inpatient days.

15. Percent of Patients Restrained or Secluded



	Feb-15	Mar-15	Apr-15	May-15	Jun-15	Jul-15	Aug-15	Sep-15	Oct-15	Nov-15	Dec-15	Jan-16
Restraint	1.3%	0.3%	7.5%	10.2%	8.2%	6.9%	5.8%	7.9%	10.9%	5.6%	6.2%	7.7%
Seclusion	3.8%	2.8%	2.9%	3.5%	3.3%	2.0%	4.8%	4.3%	5.1%	4.0%	3.6%	5.1%

* Percent of unique patients who were restrained at least once and percent of unique patients who were secluded at least once. The denominator includes all individuals who were served in care >=1 day during month.

** Prior to April 2015, the Hospital tracked only mechanical restraint events, but the Hospital's restraint policy has changed to include any physical holds. The sudden increase of the restraint data as of April 2015 reflects this change.

16. Restraint Hours Rate & Seclusion Hours Rate

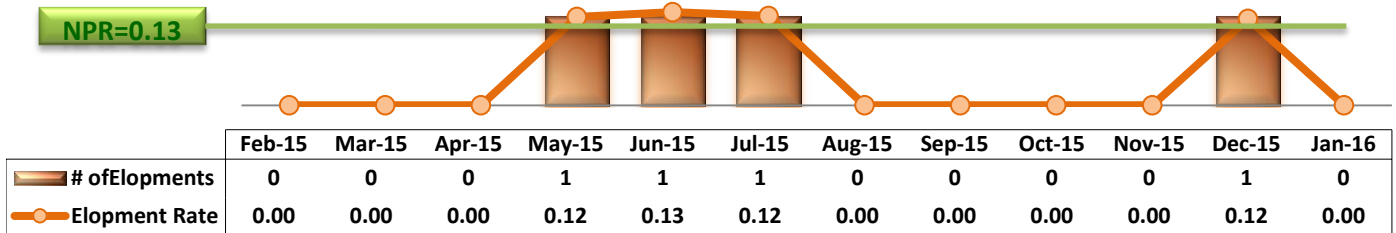


	Feb-15	Mar-15	Apr-15	May-15	Jun-15	Jul-15	Aug-15	Sep-15	Oct-15	Nov-15	Dec-15	Jan-16
Restraint	0.015	0.004	0.031	0.098	0.074	0.163	0.008	0.031	0.084	0.051	0.030	0.038
Seclusion	0.088	0.101	0.043	0.060	0.150	0.067	0.062	0.260	0.281	0.043	0.047	0.098

* Restraint/Seclusion Hours Rate: Number of hours spent in restraint/seclusion for every 1000 inpatient hours.

** The duration of each physical hold event is counted as 1 minute as a physical hold is ordered and used only as a temporary intervention that lasts less than a minute to break up any physical conflicts or to administer emergency medications.

17. Elopements

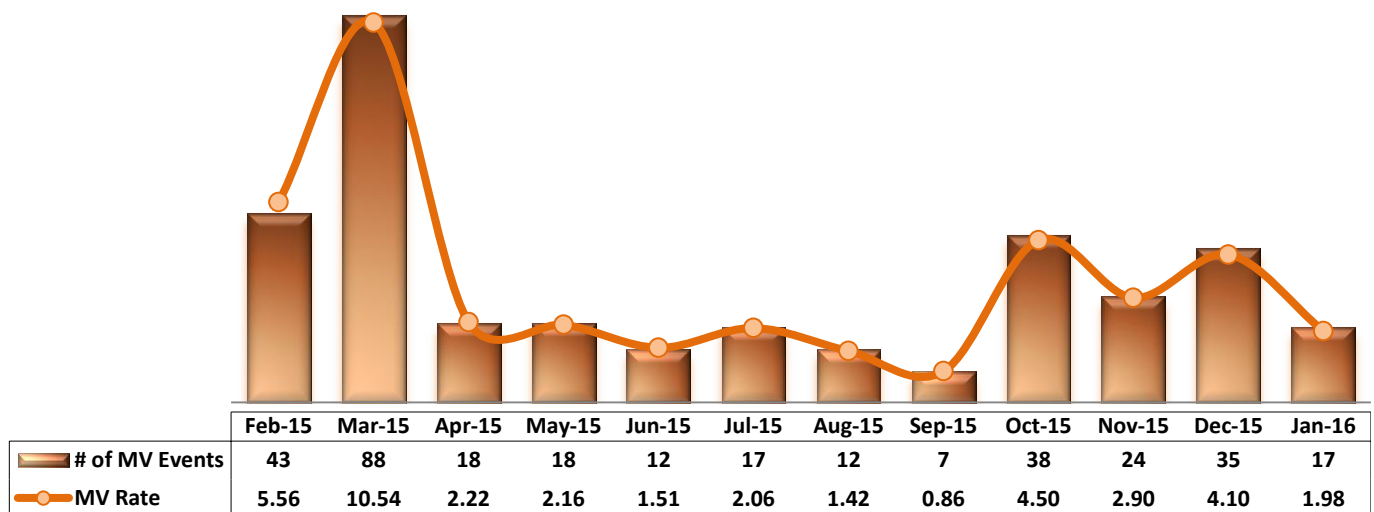


* Data herein counts the number of unauthorized leaves for any duration that were initiated during month and were recorded in Avatar. The elopement rate is the number of those unauthorized leaves that occurred for every 1000 inpatient days.

Key Trends: Medication Documentation, Medication Variance, ADR, and STAT (18~22)

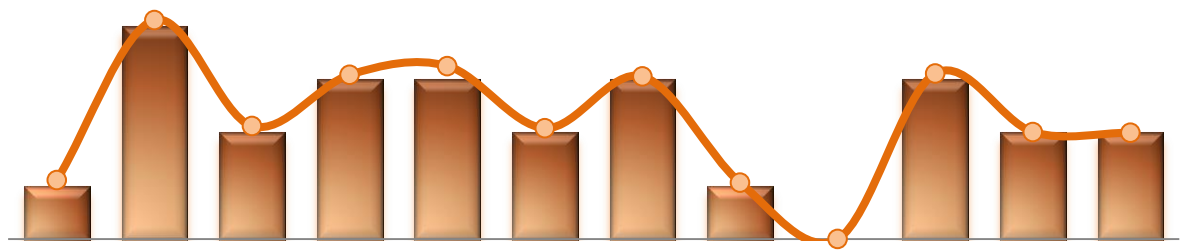
- The number of reported **MVs** in January 2016 declined to 17, which is lower than the monthly average of the last 12 months (27 per month). The number of reported ADRs ranged between zero (0) and four (4) per month in the past 12 months.
- The **rate of missing documentation** by nursing staff on medication administration increased slightly in January 2016 but remained below the 12 month average (0.57%).
- The **medication refusal rate decreased to 5.8%** in January 2016 from 6.4% in December 2015.
- Despite an increase of violence related incidents in January 2016, the number of **STAT (emergency medication) events (52) was lower** than that of the previous month (66). However, the number of unique individuals involved in one or more STAT events in January (37) was noticeably higher than the number of December 2015 (18).

18. Reported Medication Variance Events



* MV Rate: Number of reported medication variance events that occurred for every 1000 inpatient days.

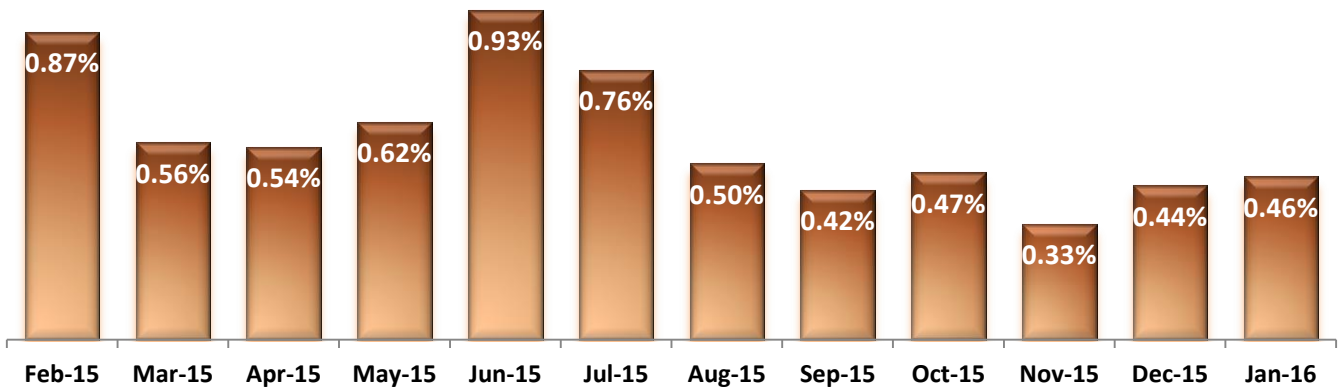
19. Reported Adverse Drug Reactions



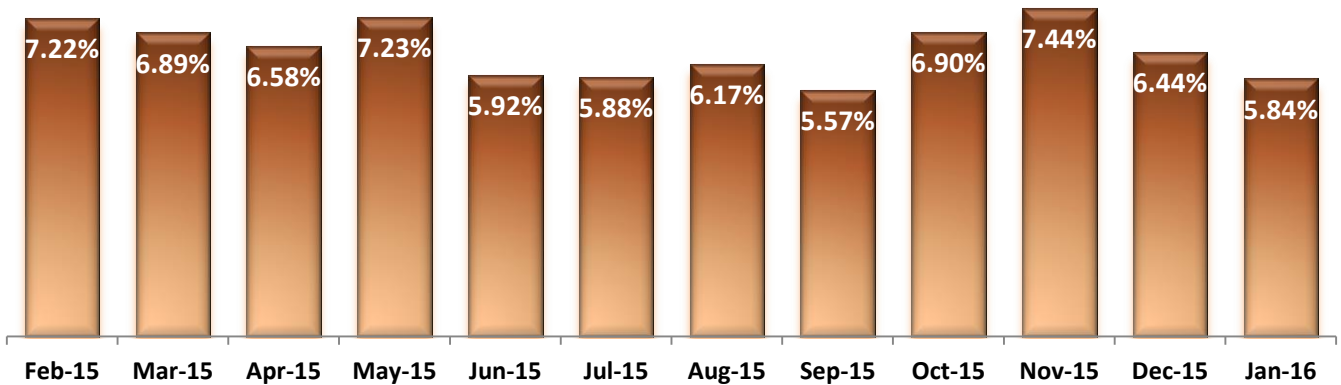
	Feb-15	Mar-15	Apr-15	May-15	Jun-15	Jul-15	Aug-15	Sep-15	Oct-15	Nov-15	Dec-15	Jan-16
# of ADRs	1	4	2	3	3	2	3	1	0	3	2	2
ADR Rate	0.13	0.48	0.25	0.36	0.38	0.24	0.36	0.12	0.00	0.36	0.23	0.23

* ADR Rate: Number of reported adverse drug reaction events that occurred for every 1000 inpatient days.

20. Percent of Missing Documentation on Med-Administration

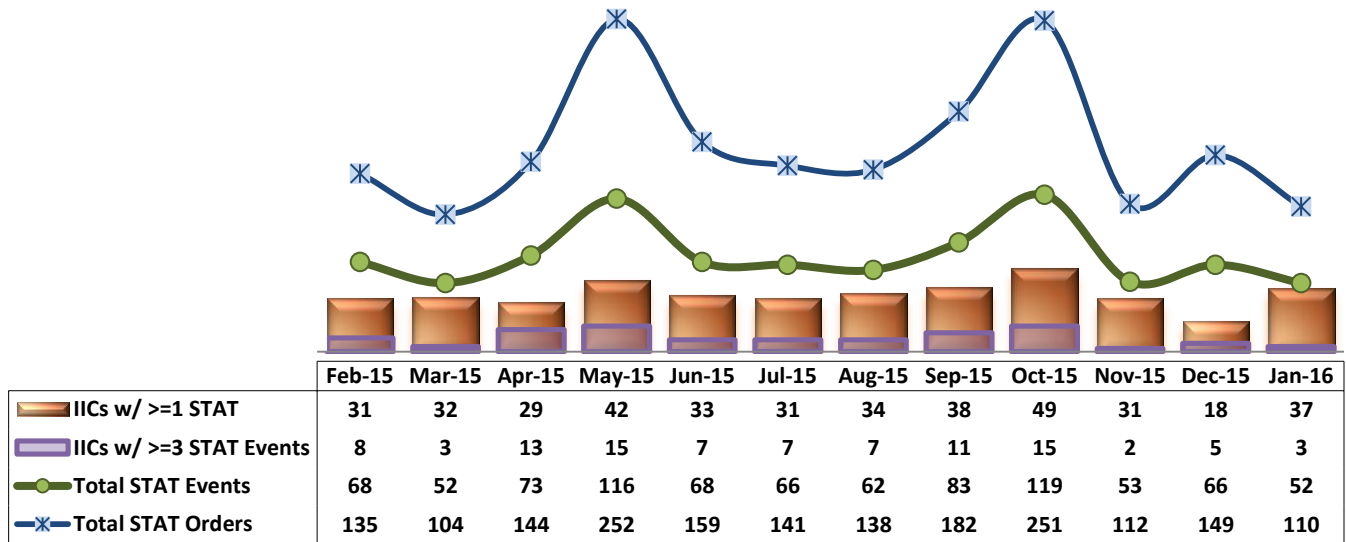


21. Medication Refusal Rate*



* Medication Refusal Rate: the number of refused medication doses divided by the total number of doses scheduled for administration.

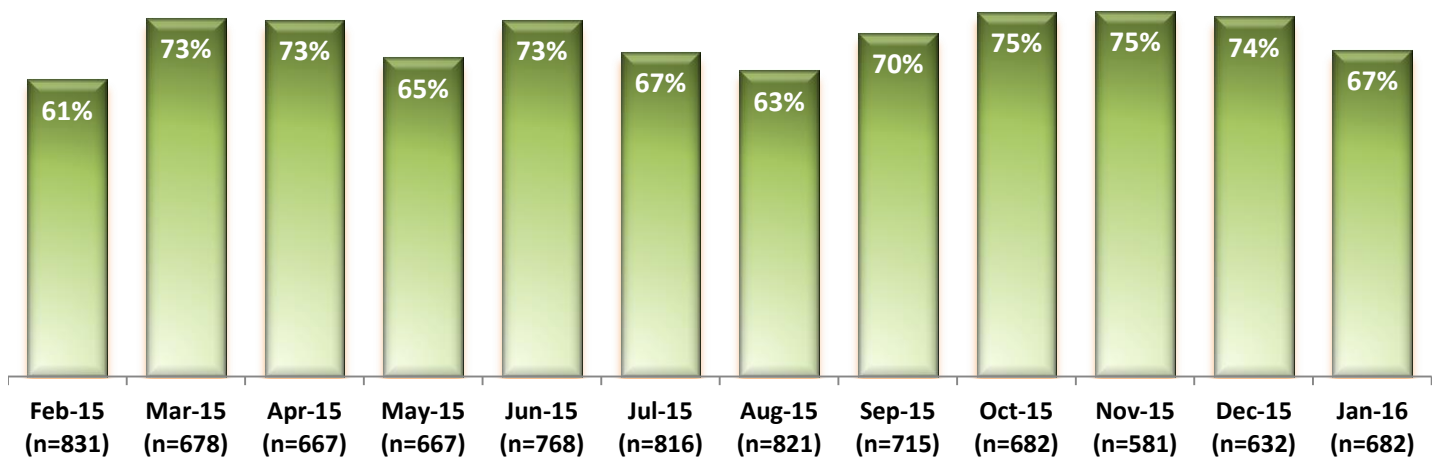
22. Number of STAT Events and Individuals Involved



Key Trends: Environment of Care (23)

- During FY15, on average, the Hospital received a total of 735 work orders per month (or 24 per day) through SiteFM. Of those, 68% were completed within 3 days. The **3 day completion rate** during the first quarter of **FY16 increased to 75%** but the rate declined to 67% in January 2016.
- In the month of January 2016, the Hospital received a total of 682 SiteFM work orders (or 22 per day), which is an increase from the previous month.

23. Percentage of SiteFM Work Orders Completed within 3 Days

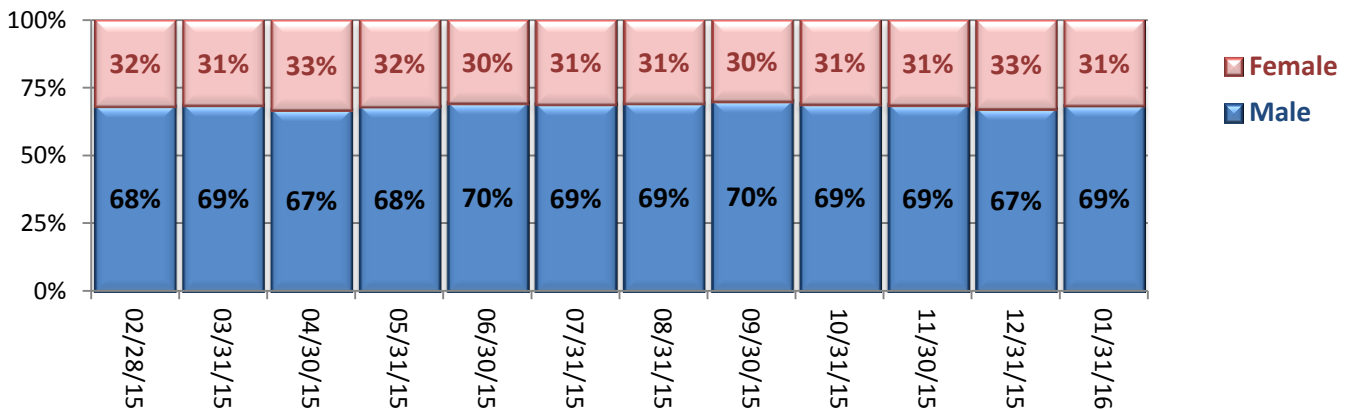


Key Trends: Demographics, Legal Status, and Length of Stay (24-25)

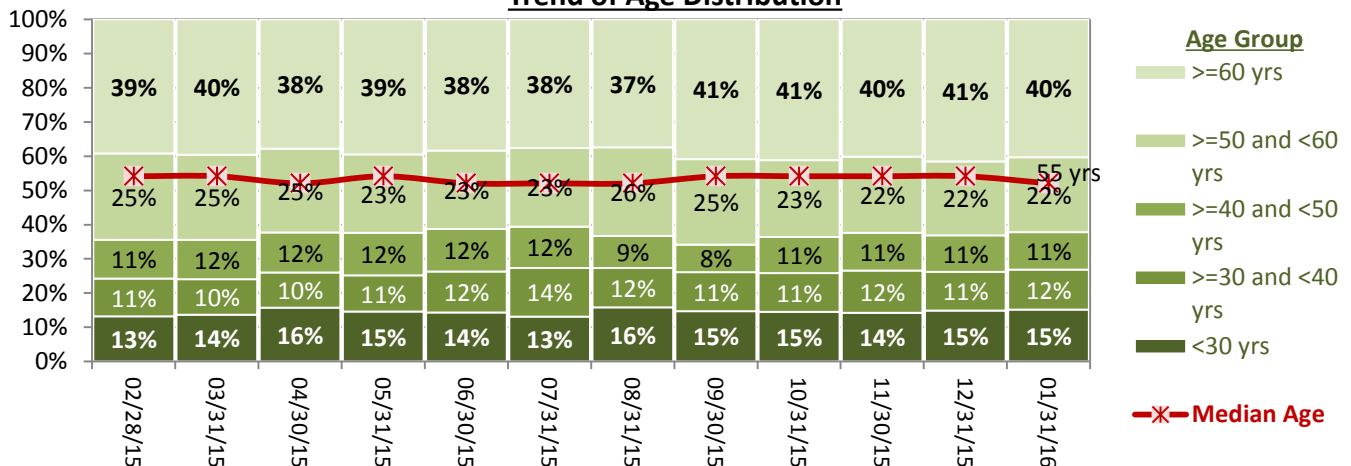
- The proportion of female individuals remaining in the Hospital’s care increased in FY14, from 26% in October 2013 to 33% in September 2014; since then, the percentage of **female individuals remained in the range of 30% to 33%** throughout FY15 and continued to remain in that range in the first four months of FY16.
- In September 30, 2015, the percentage of individuals aged **60 years or older** remaining in care (41%) reached its highest level since the Hospital reported the trend of age distribution in 2008, and that percentage **continued to remain above 40%**. During this time period, the percentage of **younger population**, particularly those under 30 years, **also noticeably increased**, hovering around 15%. An increase in younger population may be due in part to an increase of pre-trial admissions, which tend to include more younger individuals. The proportion of pre-trial population has been consistently 27% during FY16.
- The length of stay (both average and median) for individuals in the Hospital’s care significantly shortened in FY14. The average LOS continued to be in declining trend during FY15 and the first four months of FY16. However, the trend of the **median LOS was reversed in FY15 and through the first four months of FY16**: it has gradually and consistently increased in FY15 and FY16. This trend is in line with the census and discharge trend: the Hospital successfully discharged several long-term patients in the first half of 2015, contributing to a decrease of the ‘average’ LOS. However, overall, the **number and timeliness of discharges decreased in the last six (6) months, triggering an increase of ‘median’ LOS**. The median LOS for those remaining in care as of October 31, 2014 (15 months ago) was 399 days (approximately 13 months), meaning 50% of the individuals in care had been residing at the Hospital for longer than 13 months. Since then, the median LOS increased throughout the year in FY15 and to date in FY16, reaching its highest point at **494 days (over 16 months) as of January 31, 2016**.

24. Demographics

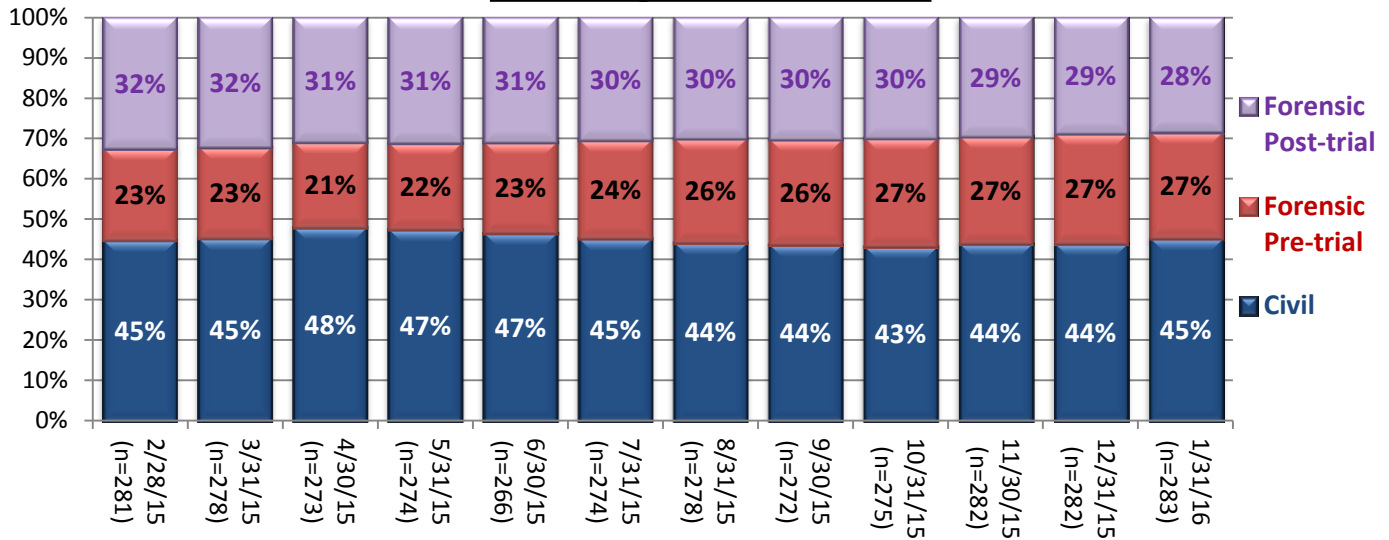
Trend of Gender Distribution



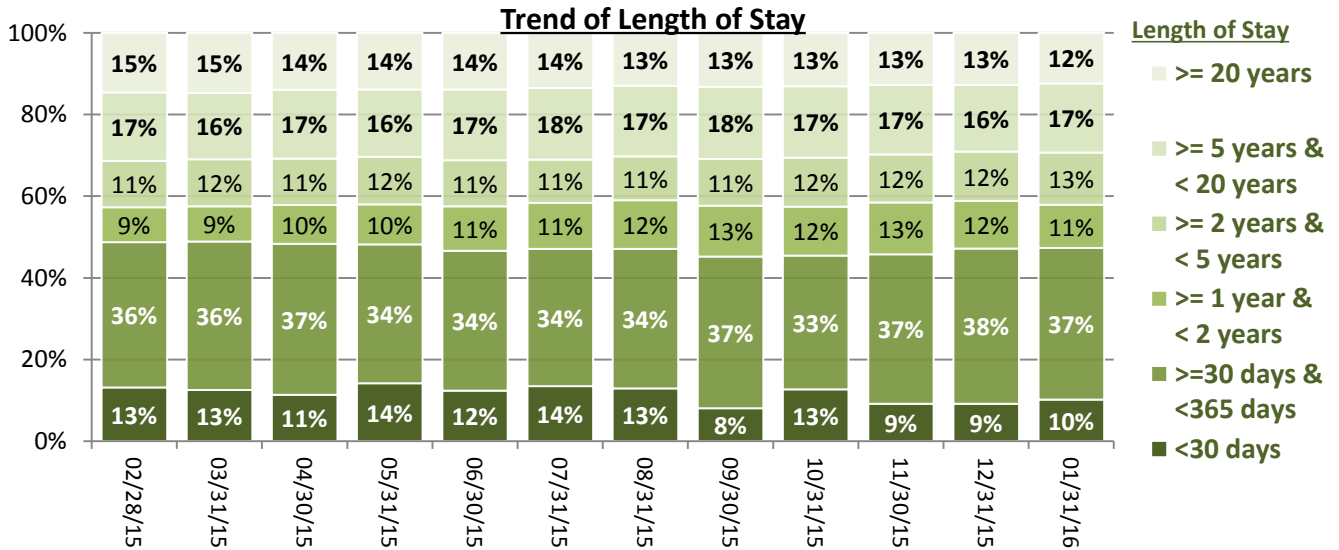
Trend of Age Distribution



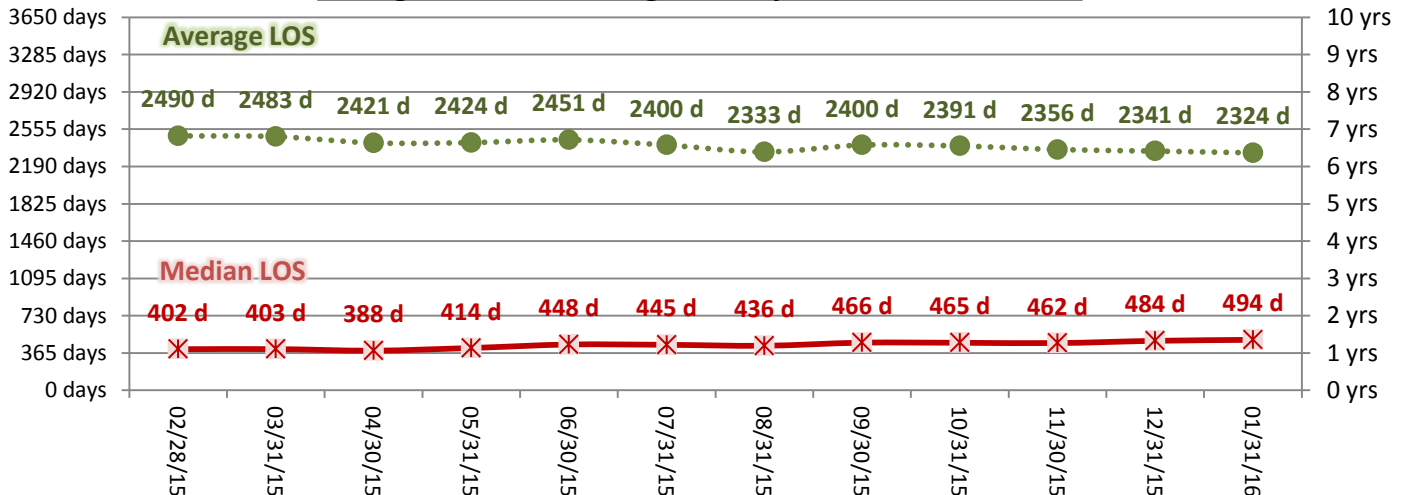
Trend of Legal Status Distribution



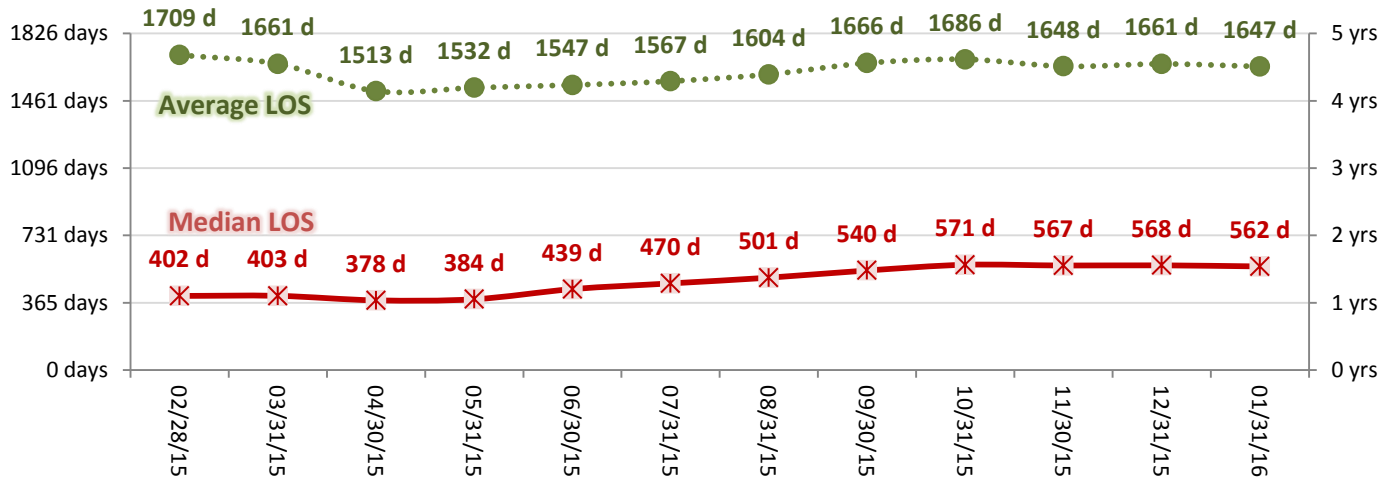
25. Length of Stay



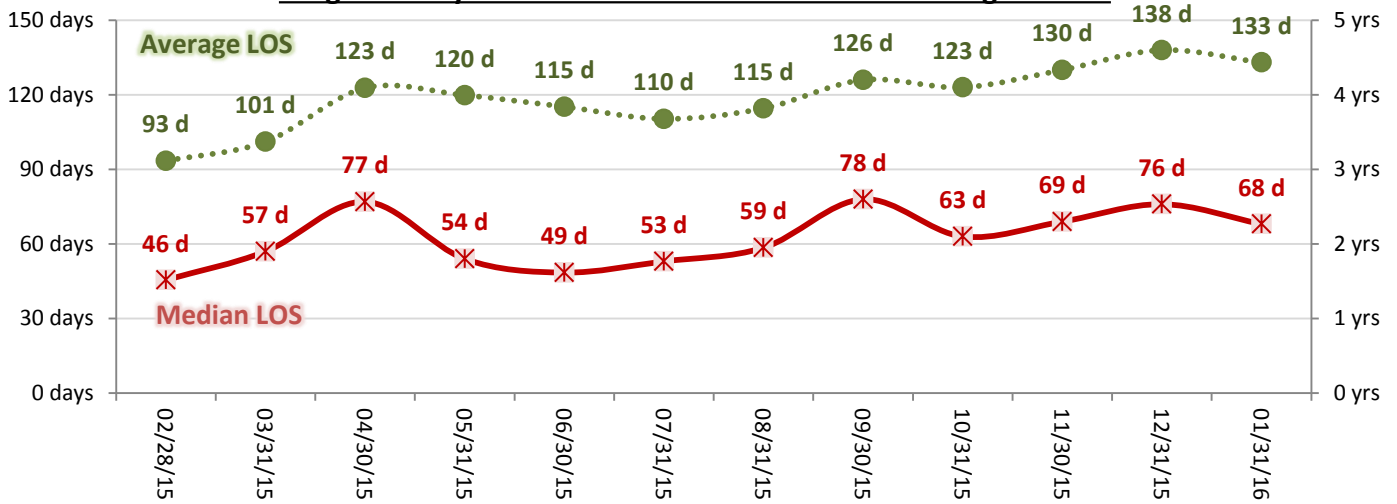
Average and Median Length of Stay for Individuals in Care



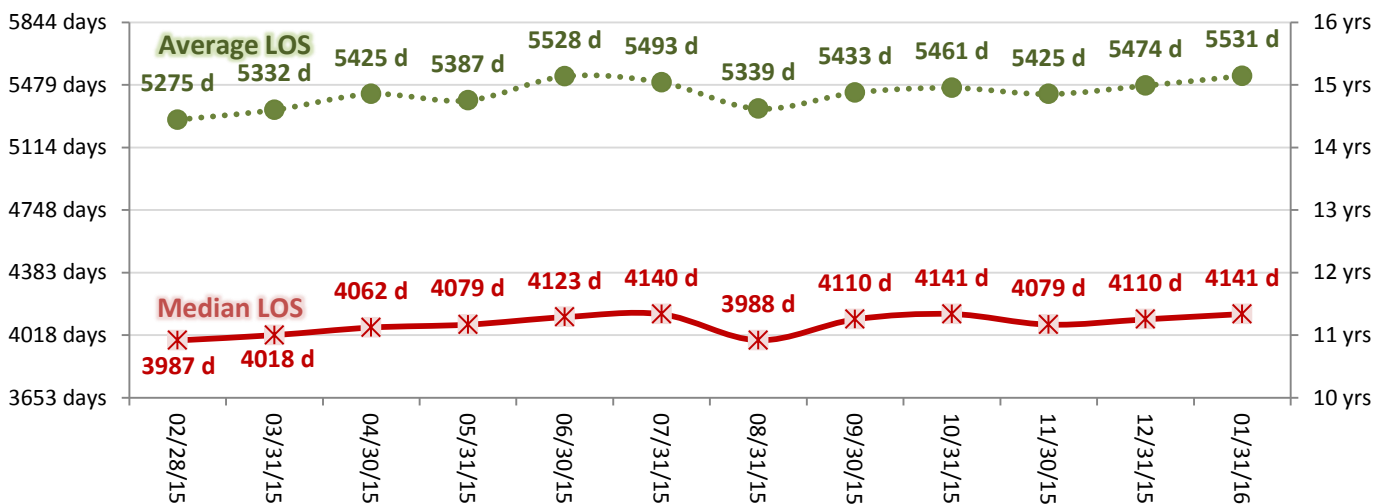
Length of Stay for Individuals in Care with Civil Legal Status



Length of Stay for Individuals in Care with Pre-trial Legal Status



Length of Stay for Individuals in Care with Post-trial Legal Status



Performance Related Information for Staff & Managers

1. Census, Admissions, Discharges & Transfers

Data Source: Avatar

Updated as of 02/15/16

Category	Feb-15	Mar-15	Apr-15	May-15	Jun-15	Jul-15	Aug-15	Sep-15	Oct-15	Nov-15	Dec-15	Jan-16	Monthly Average	Total (12mths)	Figure	
Admissions	Civil	16	19	20	16	15	15	14	13	16	11	9	6	14	170	Figure 1
	Pre-trial	21	17	12	22	20	25	22	14	25	16	17	25	20	236	
	Post-trial	2	1	1	4	1	1	2	0	1	1	3	2	2	19	
	Total	39	37	33	42	36	41	38	27	42	28	29	33	35	425	
Discharges	Civil	23	18	15	22	25	17	17	18	17	9	10	8	17	199	Figure 2
	Pre-trial	16	19	17	16	15	16	15	14	21	12	14	21	16	196	
	Post-trial	2	3	6	3	4	0	2	1	1	0	5	3	3	30	
	Total	41	40	38	41	44	33	34	33	39	21	29	32	35	425	
Net Increase During Month	Civil	-7	1	5	-6	-10	-2	-3	-5	-1	2	-1	-2		-29	
	Pre-trial	5	-2	-5	6	5	9	7	0	4	4	3	4		40	
	Post-trial	0	-2	-5	1	-3	1	0	-1	0	1	-2	-1		-11	
	Total	-2	-3	-5	1	-8	8	4	-6	3	7	0	1		0	
All Individuals on Roll at End of Month	281	278	273	274	266	274	278	272	275	282	282	283	277			
a. Present on Unit	274	276	270	269	264	271	275	267	268	278	277	282	273			
b. On AL	7	2	3	5	2	3	3	5	7	4	4	1	4			
c. On UL	0	0	0	0	0	0	0	0	0	0	1	0	0			
All Individuals on Roll: Daily Average during Month*	280	274	274	272	270	270	275	275	277	280	280	282	276		Figure 3	
a. Present on Unit	276	269	270	269	264	266	272	270	272	276	275	277.4	271			
b. On AL	4	5	4	3	6	4	3	5	5	4	4	4	3.8			
c. On UL	0	0	0	0	0	0	0	0	0	0	1	0	0.10			
Patient Days**	7738	8348	8095	8349	7925	8247	8435	8114	8439	8277	8537	8599	8259	99103		
Inter-Unit Transfers during Month	7	11	1	22	14	14	6	13	20	11	9	10	12	138	Figure 4	
Medical Leaves Initiated during Month	Emergency	11	11	10	18	20	15	10	13	8	10	13	15	13		154
	Non-Emer	55	71	79	81	96	95	89	86	72	72	54	77	919		
	Total	66	82	89	99	116	110	99	82	94	82	85	89	1073		
Non-Medical Leaves Initiated during Month	323	391	334	251	323	374	322	290	356	341	390	298	333	3993		
UL Initiated during Month	0	0	0	1	1	1	0	0	0	0	1	0	0	4		
Total Unique Patients Served during Month	320	317	306	314	305	305	311	302	312	302	308	312	310			
30 Day Readmission ***	Civil	3	1	2	1	2	1	1	1	1	1		1	15		
	Pre-trial	0	1	1	0	0	0	0	0	0	0		0	2		
	Post-trial	0	0	2	0	0	0	0	0	0	0		0	2		
	Total	3	2	5	1	2	1	1	1	1	1		2	19		

* This is the average number of individuals served on a given day for the respective month. Due to rounding from average calculation, numbers from its subcategories a, b, & c may not add up to the total number on this row.

** It counts the number of patients who are present on the unit and excludes those on authorized or unauthorized leave at 11:59pm on a given day.

*** Number of patients returning within 30 days of discharges that occurred during month.

Performance Related Information for Staff & Managers

2. Key Performance Indicators

Data Source: UI DB, MV DB, ADR DB, Restraint/Seclusion Log, and Avatar

Updated as of 02/15/16

Category	Feb-15	Mar-15	Apr-15	May-15	Jun-15	Jul-15	Aug-15	Sep-15	Oct-15	Nov-15	Dec-15	Jan-16	Monthly Average	NPR* (Jun-13)	Figure
30 Day Readmit (Discharge Cohort)**	Civil	13.0%	5.6%	13.3%	4.5%	8.0%	5.9%	5.9%	5.6%	5.9%	11.1%	10.0%	8.2%		Figure 5
	Pre-trial	0.0%	5.3%	5.9%	0.0%	0.0%	0.0%	0.0%	0.0%	0.0%	0.0%	0.0%	1.1%		
	Post-trial	0.0%	0.0%	33.3%	0.0%	0.0%	N/A	0.0%	0.0%	0.0%	#DIV/0!	0.0%	7.3%		
	Combined	7.3%	5.0%	13.2%	2.4%	4.5%	3.0%	2.9%	3.0%	2.6%	4.8%	3.4%	4.9%	6.9%	
Number of Unusual Incidents*	198	197	195	274	220	231	202	222	254	155	144	184	206		Figure 6
Patient Unusual Incident Rate	24.6	22.2	22.4	30.7	26.0	26.8	22.2	25.3	28.9	17.9	15.9	19.8	23.5		Figure 7
UI by Severity	Catastrophe	0	0	0	0	0	0	0	0	0	0	0	0		Figure 9
	High	34	35	32	69	27	22	22	37	42	20	15	29	32	
	Medium	103	76	92	108	73	79	65	84	100	31	42	42	75	
	Low	62	86	71	97	120	130	115	101	112	104	87	113	100	
Physical Assault Incident Rate	7.5	6.9	5.9	9.2	6.2	5.8	5.3	7.6	8.8	5.6	4.5	5.3	6.5		
Selected Types of Incidents	Physical Assault	58	58	48	77	49	48	45	62	74	46	38	46	54	Figure 10
	Aggressive Behav.	63	46	59	93	61	83	75	83	102	52	51	67	70	
	Psych Emergency	72	48	64	96	25	39	28	59	55	22	7	19	45	
	Fall	33	27	18	32	28	31	33	23	25	25	22	26	27	
	Injury	32	35	32	50	24	36	31	39	45	23	14	30	33	
Physical Assaults by Severity	High	13	14	9	29	10	5	4	9	20	7	3	8	13	Figure 11
	Medium	30	20	17	23	21	12	19	25	36	11	8	15	20	
	Low	15	24	22	25	18	31	22	28	18	28	27	23	23	
Patient Injury Rate***	0.13	0.12	0.12	0.36	0.13	0.12	0.36	0.37	0.12	0.36	0.12	0.00	0.19	0.38	
Patients with Major Injuries***	1	1	1	3	1	1	3	3	1	3	1	0	2		Figure 12
Total Patients Injured***	22	24	19	29	17	26	20	32	34	13	9	24	22		
Total Staff Injured***	11	13	13	32	12	8	10	10	23	10	6	8	13		Figure 13
Patient Fall Rate	4.26	2.99	1.98	3.47	3.15	3.64	3.79	2.71	2.84	3.02	2.34	3.14	3.11		Figure 14
Total Patients who Fell	33	25	16	29	25	30	32	22	24	25	20	27	26		
Total Staff who Fell	3	4	2	5	3	1	2	2	4	0	3	0	2		
Percent of Patients Restrained	1.3%	0.3%	7.5%	10.2%	8.2%	6.9%	5.8%	7.9%	10.9%	5.6%	6.2%	7.7%	1.0%	5.8%	Figure 15
Percent of Patients Secluded	3.8%	2.8%	2.9%	3.5%	3.3%	2.0%	4.8%	4.3%	5.1%	4.0%	3.6%	5.1%	3.8%	2.4%	
Restraint Hours Rate	0.015	0.004	0.031	0.098	0.074	0.163	0.008	0.031	0.084	0.051	0.030	0.038	0.061	0.71	Figure 16
Seclusion Hours Rate	0.088	0.101	0.043	0.060	0.150	0.067	0.062	0.260	0.281	0.043	0.047	0.098	0.108	0.44	
Elopement Rate	0.00	0.00	0.00	0.12	0.13	0.12	0.00	0.00	0.00	0.00	0.12	0.00	0.04	0.13	Figure 17
Medication Variance Rate	5.56	10.54	2.22	2.16	1.51	2.06	1.42	0.86	4.50	2.90	4.10	1.98	3.32		Figure 18
Adverse Drug Reaction Rate	0.13	0.48	0.25	0.36	0.38	0.24	0.36	0.12	0.00	0.36	0.23	0.23	0.26		Figure 19
Missing Med-Admin Documentation	0.87%	0.56%	0.54%	0.62%	0.93%	0.76%	0.50%	0.42%	0.47%	0.33%	0.44%	0.46%	0.57%		Figure 20
Percent of Medication Refusal	7.22%	6.89%	6.58%	7.23%	5.92%	5.88%	6.17%	5.57%	6.90%	7.44%	6.44%	5.84%	6.50%		Figure 21
SiteFM Work Orders Completed within 3 days	61%	73%	73%	65%	73%	67%	63%	70%	75%	75%	74%	67%	69%		Figure 23
Total SiteFM Work Orders	506	498	487	436	561	543	515	503	509	435	466	456	493		
	831	678	667	667	768	816	821	715	682	581	632	682	712		

* National Public Rate, NASMHPD Research Institute, National Research Institute (NRI), Data as of June 2013, Published in November 2013.

** Percentage of patients returning within 30 days of discharges that occurred during month

*** Refer to the next page [UI & Medication]

Performance Related Information for Staff & Managers

3. Unusual Incident & Medication

Data Source: UI DB, MV DB, ADR DB, and Avatar

Updated as of 02/15/16

Category		Feb-15	Mar-15	Apr-15	May-15	Jun-15	Jul-15	Aug-15	Sep-15	Oct-15	Nov-15	Dec-15	Jan-16	Monthly Average	Total (12mths)	NPR* (Jun-13)
Unusual Incidents (excluding MV)**	Total UIs	198	197	195	274	220	231	202	222	254	155	144	184	206	2476	
	Major UIs Only	157	146	153	225	130	126	115	141	154	91	94	115	137	1647	
	Pt Involved UI Only	190	185	181	256	206	221	187	205	244	148	136	170	194	2329	
	Patient UI Rate	24.6	22.2	22.4	30.7	26.0	26.8	22.2	25.3	28.9	17.9	15.9	19.8		23.5	
	Unique Pts Involved in UI	115	134	107	138	104	132	111	117	127	112	106	110	118	1413	
Selected Types of Incidents	Physical Assault	58	58	48	77	49	48	45	62	74	46	38	46	54	649	
	Aggressive Behavior	63	46	59	93	61	83	75	83	102	52	51	67	70	835	
	Psych Emergency	72	48	64	96	25	39	28	59	55	22	7	19	45	534	
	Fall	33	27	18	32	28	31	33	23	25	25	22	26	27	323	
	Injury	32	35	32	50	24	36	31	39	45	23	14	30	33	391	
	Physical Assault Rate	7.5	6.9	5.9	9.2	6.2	5.8	5.3	7.6	8.8	5.6	4.5	5.3		6.5	
UI by Severity	Catastrophe	0	0	0	0	0	0	0	0	0	0	0	0	0	0	
	High	34	35	32	69	27	22	22	37	42	20	15	29	32	384	
	Medium	103	76	92	108	73	79	65	84	100	31	42	42	75	895	
	Low	62	86	71	97	120	130	115	101	112	104	87	113	100	1198	
Physical Assaults by Severity	High	13	14	9	29	10	5	4	9	20	7	3	8	13	131	
	Medium	30	20	17	23	21	12	19	25	36	11	8	15	20	237	
	Low	15	24	22	25	18	31	22	28	18	28	27	23	23	281	
	Total Patients who Fell	33	25	16	29	25	30	32	22	24	25	20	27	26	308	
	Patient Fall Rate	4.26	2.99	1.98	3.47	3.15	3.64	3.79	2.71	2.84	3.02	2.34	3.14		3.11	
	Total Staff who Fell	3	4	2	5	3	1	2	2	4	0	3	0	2	29	
	Total Patients Injured***	22	24	19	29	17	26	20	32	34	13	9	24	22	269	
	Patients with Major Injuries***	1	1	1	3	1	1	3	3	1	3	1	0	2	19	
	Patient Injury Rate***	0.13	0.12	0.12	0.36	0.13	0.12	0.36	0.37	0.12	0.36	0.12	0.00		0.19	0.38
	Total Staff Injured**	11	13	13	32	12	8	10	10	23	10	6	8	13		
	Total UIs Documented in Avatar	0	0	0	1	1	1	0	0	0	0	1	0	0	4	
	Elopement Rate	0.00	0.00	0.00	0.12	0.13	0.12	0.00	0.00	0.00	0.00	0.12	0.00		0.04	0.13
	Med Variance (MV) Reports**	43	88	18	18	12	17	12	7	38	24	35	17	27	329	
	MV Rate	5.56	10.54	2.22	2.16	1.51	2.06	1.42	0.86	4.50	2.90	4.10	1.98		3.32	
	Adverse Drug Reactions Reports	1	4	2	3	3	2	3	1	0	3	2	2	2	26	
	ADR Rate	0.13	0.48	0.25	0.36	0.38	0.24	0.36	0.12	0.00	0.36	0.23	0.23		0.26	
	Total Medications Scheduled	96178	103742	99674	101673	98847	101726	104695	99956	105811	102613	105331	111076		1231322	
	Total Missing Documentations	838	579	543	626	923	777	522	423	500	336	459	513		7039	
	Percent of Missing Documentation	0.87%	0.56%	0.54%	0.62%	0.93%	0.76%	0.50%	0.42%	0.47%	0.33%	0.44%	0.46%		0.57%	
	Total Medication Doses Refused	6940	7145	6562	7352	5856	5977	6463	5572	7303	7635	6788	6487		80080	
	Percent of Medication Refusal	7.22%	6.89%	6.58%	7.23%	5.92%	5.88%	6.17%	5.57%	6.90%	7.44%	6.44%	5.84%		6.50%	
	Total STAT Orders	135	104	144	252	159	141	138	182	251	112	149	110	156		Figure 22
	Total STAT Events****	68	52	73	116	68	66	62	83	119	53	66	52	73		
	Total Individuals Involved >=1 STAT	31	32	29	42	33	31	34	38	49	31	18	37	34		
	Total Patients with >=3 STAT Events	8	3	13	15	7	7	7	11	15	2	5	3	8		

* National Public Rate, NASMHPD Research Institute, National Research Institute (NRI), Data as of June 2013, Published in November 2013.

** Numbers may change if any additional UI report is made after the data run date from UI database (around the 15th of the following month); According to the revised UI policy as of November 4, 2013, a medication variance (MV) incident became no longer considered to be an unusual incident, and a medication or vital sign refusal incident is not longer an UI as of May 2014. UI data for the past 12 months in this report has been updated to reflect this change and reanalyzed in order to show the UI trend in consistent logic.

*** Injury is broadly defined to include any type of injuries regardless of the cause or severity level. The total number of patients injured represents all of the reported injuries including minor injuries treated with first aid alone. However, the patient injury rate considers only the number of patient injuries that required beyond first-aid level treatment based on the NRI definition and the patient injury rate is the number of 'major' patient injuries per every 1000 inpatient days

**** One STAT event may involve more than one STAT order for the same patient. Any orders placed within 20 minute timeframe are considered to belong to one STAT event.

Performance Related Information for Staff & Managers

4. Restraint & Seclusion

Data Source: Restraint/Seclusion Log and UI DB (for # of total events and patients) and Avatar (for patient days/hours)

Updated as of 02/15/16

Category		Feb-15	Mar-15	Apr-15	May-15	Jun-15	Jul-15	Aug-15	Sep-15	Oct-15	Nov-15	Dec-15	Jan-16	Monthly Average	Total (12mths)	NPR* (Jun-13)
Number of Restraint Events	Mechanical	4	1	6	16	5	15	1	3	8	1	3	4	5.6	67	
	Physical Hold			42	61	35	26	27	38	67	21	20	34	37.1		
	Total			48	77	40	41	28	41	75	22	23	38	43.3		
Number of Unique Patients Restrained	Mechanical	4	1	3	7	5	4	1	2	6	1	1	3	3.2		
	Physical Hold			20	25	20	17	17	22	28	16	18	21	20.4		
	Total			23	32	25	21	18	24	34	17	19	24	23.7		
Percentage of Patients Restrained**	Mechanical	1.3%	0.3%	1.0%	2.2%	1.6%	1.3%	0.3%	0.7%	1.9%	0.3%	0.3%	1.0%	1.0%		
	Physical Hold			6.5%	8.0%	6.6%	5.6%	5.5%	7.3%	9.0%	5.3%	5.8%	6.7%	6.6%		
	Total			7.5%	10.2%	8.2%	6.9%	5.8%	7.9%	10.9%	5.6%	6.2%	7.7%	7.7%		5.8%
Total Restraint Hours (h:mm)**	Mechanical	2:46	0:50	5:19	18:37	13:22	31:37	0:05	2:45	10:29	8:21	4:33	5:10	8:39	103:54	
	Physical Hold			0:42	1:01	0:47	0:37	1:36	3:22	6:35	1:42	1:35	2:36	2:03	6 mths	
	Total			6:01	19:38	14:09	32:14	1:41	6:07	17:04	10:03	6:08	7:46	12:05	6 mths	
Restraint Hours Rate**	Mechanical	0.015	0.004	0.027	0.093	0.070	0.160	0.000	0.014	0.052	0.042	0.022	0.025	0.044	12 mths	
	Physical Hold			0.004	0.005	0.004	0.003	0.008	0.017	0.033	0.009	0.008	0.013	0.010	6 mths	
	Total			0.031	0.098	0.074	0.163	0.008	0.031	0.084	0.051	0.030	0.038	0.061	6 mths	0.71
Number of Seclusion Events		20	15	15	20	21	14	18	37	40	13	12	22	20.6	247	
Number of Unique Patients Secluded		12	9	9	11	10	6	15	13	16	12	11	16	11.7		
Percentage of Patients Secluded		3.8%	2.8%	2.9%	3.5%	3.3%	2.0%	4.8%	4.3%	5.1%	4.0%	3.6%	5.1%	3.8%		2.4%
Total Seclusion Hours (h:mm)		16:21	20:15	8:24	12:02	28:28	13:18	12:36	50:35	56:52	8:33	9:38	20:13	21:26	257:15	
Seclusion Hours Rate		0.088	0.101	0.043	0.060	0.150	0.067	0.062	0.260	0.281	0.043	0.047	0.098		0.108	0.44

* National Public Rate, NASMHPD Research Institute, National Research Institute (NRI), Data as of June 2013, Published in November 2013.

** Restraint data prior to April 2015 includes only mechanical restraints. The Hospital's restraint policy has been revised to consider a physical hold a restraint and data as of April 2015 reflects this change. The duration of each physical hold event is counted as one (1) minute as a physical hold is ordered/used only as a temporary intervention that lasts less than a minute to break up any physical altercations or to administer emergency medications.

Performance Related Information for Staff & Managers

5. Major Unusual Incidents by Incident Location/Unit

Data Source: UI DB

Updated as of 02/15/16

Category		Feb-15	Mar-15	Apr-15	May-15	Jun-15	Jul-15	Aug-15	Sep-15	Oct-15	Nov-15	Dec-15	Jan-16	Monthly Average	Total (12mths)	Percent
Total Unusual Incidents		198	197	195	274	220	231	202	222	254	155	144	184	206	2476	100%
Incident Location	1A	5	12	13	16	18	8	8	16	6	6	13	9	11	130	5%
	1B	10	13	18	8	7	15	21	19	18	21	20	7	15	177	7%
	1C	25	7	7	33	22	8	19	12	15	12	14	13	16	187	8%
	1D	15	23	27	29	18	37	17	22	24	11	11	30	22	264	11%
	1E	12	12	25	37	14	27	15	29	21	9	6	14	18	221	9%
	1F	28	28	20	46	28	18	17	30	46	16	15	14	26	306	12%
	1G	12	7	16	12	14	21	21	12	17	13	15	20	15	180	7%
	2A	3	6	5	7	5	14	4	14	11	0	8	10	7	87	4%
	2B	3	4	4	5	3	5	3	4	1	4	2	3	3	41	2%
	2C	24	10	2	9	20	24	14	15	35	17	12	12	16	194	8%
	2D	19	33	24	22	24	23	23	14	27	16	7	20	21	252	10%
	TLC	31	27	16	25	32	14	18	17	26	23	8	19	21	256	10%
	Other	11	15	18	25	15	17	22	18	7	7	13	13	15	181	7%
	Physical Assault		58	58	48	77	49	48	45	62	74	46	38	46	54	649
Incident Location	1A	2	4	2	3	4	3	1	2	0	2	6	1	3	30	5%
	1B	1	0	1	0	0	0	3	1	1	5	3	0	1	15	2%
	1C	6	2	1	15	4	2	8	4	4	5	3	6	5	60	9%
	1D	4	7	7	6	3	9	2	6	9	3	3	7	6	66	10%
	1E	4	8	6	6	5	6	4	10	4	2	1	5	5	61	9%
	1F	13	10	8	20	14	8	4	17	28	5	6	6	12	139	21%
	1G	5	1	4	1	6	5	7	6	4	1	4	4	4	48	7%
	2A	1	0	1	0	0	1	0	2	1	0	0	1	1	7	1%
	2B	0	0	0	0	0	0	0	0	0	0	6	1	1	7	1%
	2C	10	4	0	3	3	6	3	4	11	9	2	8	5	63	10%
	2D	4	12	12	8	4	6	10	4	7	5	2	4	7	78	12%
	TLC - Intensive	6	9	2	7	5	2	3	2	5	7	1	1	4	50	8%
	TLC - Transitional	1	1	3	2	0	0	0	2	0	2	1	2	1	14	2%
	Other	1	0	1	6	1	0	0	2	0	0	0	0	1	11	2%

Performance Related Information for Staff & Managers

5. Major Unusual Incidents by Incident Location/Unit

Data Source: UI DB

Updated as of 02/15/16

Category		Feb-15	Mar-15	Apr-15	May-15	Jun-15	Jul-15	Aug-15	Sep-15	Oct-15	Nov-15	Dec-15	Jan-16	Monthly Average	Total (12mths)	Percent
Aggressive Behavior		63	46	59	93	61	83	75	83	102	52	51	67	70	835	129%
Incident Location	1A	0	0	1	0	2	1	1	1	4	1	4	0	1	15	2%
	1B	0	1	3	0	0	2	9	7	2	5	4	2	3	35	5%
	1C	12	2	2	9	9	3	7	3	4	5	9	3	6	68	10%
	1D	8	7	14	15	11	14	6	11	10	4	6	18	10	124	19%
	1E	5	1	12	21	5	11	6	14	15	4	3	5	9	102	16%
	1F	10	7	7	19	6	5	4	9	11	4	7	3	8	92	14%
	1G	2	1	6	8	3	10	11	3	8	6	5	8	6	71	11%
	2A	2	2	1	3	2	11	3	10	7	0	3	3	4	47	7%
	2B	0	0	0	0	0	1	0	0	0	0	0	2	0	3	0%
	2C	5	3	0	2	7	6	5	6	17	2	1	7	5	61	9%
	2D	7	11	6	6	5	12	10	8	15	7	3	10	8	100	15%
	TLC - Intensive	8	6	4	4	6	1	3	4	5	8	2	0	4	51	8%
	TLC - Transitional	2	2	3	5	4	4	3	4	2	4	1	4	3	38	6%
	Other	2	3	0	1	1	2	7	3	2	2	3	2	2	28	4%
Psych Emergency		72	48	64	96	25	39	28	59	55	22	7	19	45	534	82%
Incident Location	1A	1	0	1	0	0	1	0	0	1	0	0	0	0	4	1%
	1B	0	0	3	0	0	2	5	4	3	1	0	0	2	18	3%
	1C	7	4	1	19	2	4	2	2	2	2	1	2	4	48	7%
	1D	11	10	15	16	5	9	3	9	12	7	3	10	9	110	17%
	1E	7	5	18	20	5	7	3	15	7	1	1	2	8	91	14%
	1F	15	15	10	26	9	3	3	14	13	3	0	2	9	113	17%
	1G	2	1	4	2	1	5	3	3	2	2	1	1	2	27	4%
	2A	1	0	2	3	1	4	1	5	5	0	0	0	2	22	3%
	2B	0	0	0	0	0	0	0	0	0	0	0	1	0	1	0%
	2C	7	1	0	0	0	0	2	3	5	2	1	1	2	22	3%
	2D	9	3	7	3	2	1	2	1	2	2	0	0	3	32	5%
	TLC - Intensive	10	6	1	1	0	2	1	1	2	1	0	0	2	25	4%
	TLC - Transitional	0	1	2	4	0	1	1	0	1	1	0	0	1	11	2%
	Other	2	2	0	2	0	0	2	2	0	0	0	0	1	10	2%

Performance Related Information for Staff & Managers

5. Major Unusual Incidents by Incident Location/Unit

Data Source: UI DB

Updated as of 02/15/16

Category		Feb-15	Mar-15	Apr-15	May-15	Jun-15	Jul-15	Aug-15	Sep-15	Oct-15	Nov-15	Dec-15	Jan-16	Monthly Average	Total (12mths)	Percent	
Fall		33	27	18	32	28	31	33	23	25	25	22	26	27	323	100%	
Incident Location	1A	2	5	0	8	8	3	3	9	1	2	3	2	4	46	14%	
	1B	6	3	2	2	5	9	8	7	5	8	4	2	5	61	19%	
	1C	0	3	1	2	0	0	0	1	1	1	1	1	1	11	3%	
	1D	0	2	4	1	0	1	2	0	2	0	1	0	1	13	4%	
	1E	2	0	0	1	2	2	3	1	2	2	0	4	2	19	6%	
	1F	4	3	1	2	1	6	2	0	3	1	1	2	2	26	8%	
	1G	4	1	1	2	4	1	4	0	1	2	5	7	3	32	10%	
	2A	0	1	1	2	0	2	0	1	1	0	1	0	1	9	3%	
	2B	1	1	2	2	1	1	3	0	0	1	0	0	1	12	4%	
	2C	5	0	0	0	1	1	0	1	5	4	2	2	2	21	7%	
	2D	3	3	2	3	3	1	2	1	0	0	2	3	2	23	7%	
	TLC - Intensive	1	1	1	4	1	1	2	0	4	3	1	2	2	21	7%	
	TLC - Transitional	1	0	0	0	0	1	1	0	0	1	1	1	1	6	2%	
	Other	4	4	3	3	2	2	3	2	0	0	0	0	2	23	7%	
Physical Injury		32	35	32	50	24	36	31	39	45	23	14	30	33	391	100%	
Incident Location	1A	2	2	2	3	1	2	0	1	0	1	1	2	1	17	4%	
	1B	1	4	5	2	0	0	3	3	1	2	1	1	2	23	6%	
	1C	4	3	0	11	2	2	8	7	3	0	0	5	4	45	12%	
	1D	1	7	5	6	3	6	4	4	9	3	2	5	5	55	14%	
	1E	2	1	2	5	3	2	3	3	1	1	0	2	2	25	6%	
	1F	8	7	3	8	6	5	3	9	17	5	2	5	7	78	20%	
	1G	1	0	1	0	1	2	2	3	3	3	1	1	1	16	4%	
	2A	1	0	2	1	0	1	0	1	1	0	0	0	1	7	2%	
	2B	0	0	1	1	1	1	1	2	0	1	1	1	1	10	3%	
	2C	6	1	0	1	2	3	0	3	5	4	3	1	2	29	7%	
	2D	1	1	4	3	3	3	3	3	1	3	0	1	3	2	26	7%
	TLC - Intensive	1	5	2	4	1	5	0	1	2	4	0	2	2	27	7%	
	TLC - Transitional	2	0	0	2	0	0	0	0	0	0	0	0	1	0	5	1%
	Other	2	4	5	3	1	4	4	1	0	1	2	1	2	28	7%	

* Not every incident is a major incident. This counts only those incidents that were classified to be major based on the policy.

Performance Related Information for Staff & Managers

6A. Demographic Information of Individuals in Care

Data Source: Avatar

Updated as of 02/15/16

Category	Sub-group	Feb-15	Mar-15	Apr-15	May-15	Jun-15	Jul-15	Aug-15	Sep-15	Oct-15	Nov-15	Dec-15	Jan-16	Monthly Average	Percent*
Total Active (on Roll) at End of Month*		281	278	273	274	266	274	278	272	275	282	282	283	277	
Gender	Female	89	87	90	87	81	85	85	81	85	88	92	89	87	31.3%
	Male	192	191	183	187	185	189	193	191	190	194	190	194	190	68.7%
Age	Median Age (Years)	56 yrs	56 yrs	55 yrs	56 yrs	55 yrs	55 yrs	55 yrs	56 yrs	56 yrs	56 yrs	56 yrs	55 yrs	56 yrs	Figure 24
	<30 years old	37	38	43	40	38	36	44	40	40	40	42	43	40	14.5%
	>=30 and <40 years old	31	29	28	29	32	39	32	31	31	35	32	33	32	11.5%
	>=40 and <50 years old	32	32	32	34	33	33	26	22	29	31	30	31	30	11.0%
	>=50 and <60 years old	71	69	67	63	61	63	72	68	62	63	61	62	65	23.6%
	>=60 years old	110	110	103	108	102	103	104	111	113	113	117	114	109	39.4%
Legal Status of Individuals on Roll at End of Month	Emergency	27	38	45	38	32	32	25	25	24	23	26	15	29	10.5%
	Inpatient Commitment	36	33	35	34	34	33	33	32	28	30	31	35	33	11.9%
	Outpatient Commitment	28	17	16	21	22	22	28	25	27	30	26	34	25	8.9%
	Voluntary	34	38	35	37	36	37	37	37	40	41	41	44	38	13.8%
	Non-Protesting	1	0	0	0	0	0	0	0	0	0	0	0	0	0.0%
	Civil Sub-total	126	126	131	130	124	124	123	119	119	124	124	128	125	45.1%
	DC Exam	41	38	38	39	30	35	36	39	43	46	46	37	39	14.1%
	Mentally Incompetent	23	25	20	20	30	32	36	32	31	29	31	38	29	10.5%
	Forensic Pre-trial Sub-total	64	63	58	59	60	67	72	71	74	75	77	75	68	24.6%
	NGBRI - DC	76	74	70	72	69	70	71	70	70	71	68	67	71	25.6%
	NGBRI - US	10	10	9	9	9	9	8	8	8	8	8	8	9	3.1%
	NGBRI - VI	1	1	1	1	1	1	1	1	1	1	1	1	1	0.4%
	Dual Commitment	1	1	1	0	0	0	0	0	0	0	0	0	0	0.1%
	Post Trial Mental Exam PTME	0	0	0	0	0	0	0	0	0	0	1	1	0	0.1%
Sexual Psychopath (Miller Act)	3	3	3	3	3	3	3	3	3	3	3	3	3	1.1%	
Forensic Post-trial Sub-total	91	89	84	85	82	83	83	82	82	83	81	80	84	30.3%	
Length of Stay	<30 Days	37	35	31	39	33	37	36	22	35	26	26	29	32	11.6%
	>=30 ~ <365 Days	100	101	101	93	91	92	95	101	90	103	107	105	98	35.5%
	>= 1 Year & < 2 Years	24	24	26	27	29	31	33	34	33	36	33	30	30	10.8%
	>= 2 Years & < 5 Years	32	32	31	32	30	29	30	31	33	33	34	36	32	11.5%
	>= 5 Years & < 20 Years	47	45	46	45	46	48	48	48	48	48	46	48	47	17.0%
	>= 20 Years	41	41	38	38	37	37	36	36	36	36	36	35	37	13.5%
	Median LOS (Days)	402 d	403 d	388 d	414 d	448 d	445 d	436 d	466 d	465 d	462 d	484 d	494 d	442 d	Figure 25
	Median LOS - Civil	402 d	403 d	378 d	384 d	439 d	470 d	501 d	540 d	571 d	567 d	568 d	562 d	482 d	
	Median LOS - Pre-trial	46 d	57 d	77 d	54 d	49 d	53 d	59 d	78 d	63 d	69 d	76 d	68 d	62 d	
	Median LOS - Post-trial	3987 d	4018 d	4062 d	4079 d	4123 d	4140 d	3988 d	4110 d	4141 d	4079 d	4110 d	4141 d	4082 d	
	Average LOS (Days)	2490 d	2483 d	2421 d	2424 d	2451 d	2400 d	2333 d	2400 d	2391 d	2356 d	2341 d	2324 d	2401 d	
Average LOS - Civil	1709 d	1661 d	1513 d	1532 d	1547 d	1567 d	1604 d	1666 d	1686 d	1648 d	1661 d	1647 d	1620 d		
Average LOS - Pre-trial	93 d	101 d	123 d	120 d	115 d	110 d	115 d	126 d	123 d	130 d	138 d	133 d	119 d		
Average LOS - Post-trial	5275 d	5332 d	5425 d	5387 d	5528 d	5493 d	5339 d	5433 d	5461 d	5425 d	5474 d	5531 d	5425 d		

* Counts the total number of individuals who are on the hospital roll at end of each month. This number serves as denominator to calculate percentage of each group.

Performance Related Information for Staff & Managers

6B. Demographic Information of Individuals in Care

Data Source: Avatar

Updated as of 02/15/16

Category	Sub-group	Feb-15	Mar-15	Apr-15	May-15	Jun-15	Jul-15	Aug-15	Sep-15	Oct-15	Nov-15	Dec-15	Jan-16	Monthly Average	Percent*
Total Active (on Roll) at End of Month*		281	278	273	274	266	274	278	272	275	282	282	283	277	
Gender	Female	32%	31%	33%	32%	30%	31%	31%	30%	31%	31%	33%	31%	31%	
	Male	68%	69%	67%	68%	70%	69%	69%	70%	69%	69%	67%	69%	69%	
Age	Median Age (Years)	56 yrs	56 yrs	55 yrs	56 yrs	55 yrs	55 yrs	55 yrs	56 yrs	56 yrs	56 yrs	56 yrs	55 yrs	56 yrs	
	<30 yrs	13%	14%	16%	15%	14%	13%	16%	15%	15%	14%	15%	15%	14%	
	>=30 and <40 yrs	11%	10%	10%	11%	12%	14%	12%	11%	11%	12%	11%	12%	12%	
	>=40 and <50 yrs	11%	12%	12%	12%	12%	12%	9%	8%	11%	11%	11%	11%	11%	
	>=50 and <60 yrs	25%	25%	25%	23%	23%	23%	26%	25%	23%	22%	22%	22%	24%	
	>=60 yrs	39%	40%	38%	39%	38%	38%	37%	41%	41%	40%	41%	40%	39%	
Legal Status of Individuals on Roll at End of Month	Emergency	10%	14%	16%	14%	12%	12%	9%	9%	9%	8%	9%	5%	11%	
	Inpatient Commitment	13%	12%	13%	12%	13%	12%	12%	12%	10%	11%	11%	12%	12%	
	Outpatient Commitment	10%	6%	6%	8%	8%	8%	10%	9%	10%	11%	9%	12%	9%	
	Voluntary	12%	14%	13%	14%	14%	14%	13%	14%	15%	15%	15%	16%	14%	
	Non-Prototyping	0%	0%	0%	0%	0%	0%	0%	0%	0%	0%	0%	0.0%	0%	
	Civil Sub-total	45%	45%	48%	47%	47%	45%	44%	44%	43%	44%	44%	45%	45%	
	DC Exam	15%	14%	14%	14%	11%	13%	13%	14%	16%	16%	16%	13%	14%	
	Mentally Incompetent	8%	9%	7%	7%	11%	12%	13%	12%	11%	10%	11%	13%	10%	
	Forensic Pre-trial Sub-total	23%	23%	21%	22%	23%	24%	26%	26%	27%	27%	27%	27%	25%	
	NGBRI - DC	27%	27%	26%	26%	26%	26%	26%	26%	25%	25%	24%	24%	26%	
	NGBRI - US	4%	4%	3%	3%	3%	3%	3%	3%	3%	3%	3%	3%	3%	
	NGBRI - VI	0%	0%	0%	0%	0%	0%	0%	0%	0%	0%	0%	0%	0%	
	Dual Commitment	0%	0%	0%	0%	0%	0%	0%	0%	0%	0%	0%	0%	0%	
Sexual Psychopath (Miller Ac	1%	1%	1%	1%	1%	1%	1%	1%	1%	1%	1%	1%	1%		
Forensic Post-trial Sub-total	32%	32%	31%	31%	31%	30%	30%	30%	30%	30%	29%	29%	28%	30%	
Length of Stay	Median LOS (Days)	402 d	403 d	388 d	414 d	448 d	445 d	436 d	466 d	465 d	462 d	484 d	494 d	442 d	
	Average LOS (Days)	2490 d	2483 d	2421 d	2424 d	2451 d	2400 d	2333 d	2400 d	2391 d	2356 d	2341 d	2324 d	2401 d	
	<30 days	13%	13%	11%	14%	12%	14%	13%	8%	13%	9%	9%	10%	12%	
	>=30 days & <365 days	36%	36%	37%	34%	34%	34%	34%	37%	33%	37%	38%	37%	36%	
	>= 1 year & < 2 years	9%	9%	10%	10%	11%	11%	12%	13%	12%	13%	12%	11%	11%	
	>= 2 years & < 5 years	11%	12%	11%	12%	11%	11%	11%	11%	12%	12%	12%	13%	12%	
	>= 5 years & < 20 years	17%	16%	17%	16%	17%	18%	17%	18%	17%	17%	16%	17%	17%	
>= 20 years	15%	15%	14%	14%	14%	14%	13%	13%	13%	13%	13%	12%	13%		

* Counts the total number of individuals who are on the hospital roll at end of each month. This number serves as denominator to calculate percentage of each group.