



Government of the District of Columbia
Department of Behavioral Health (DBH)



PRISM

Performance Related Information for Staff and Managers



NOVEMBER 2015

Office of Statistics and Reporting (OSR), 12/21/15

Table of Contents

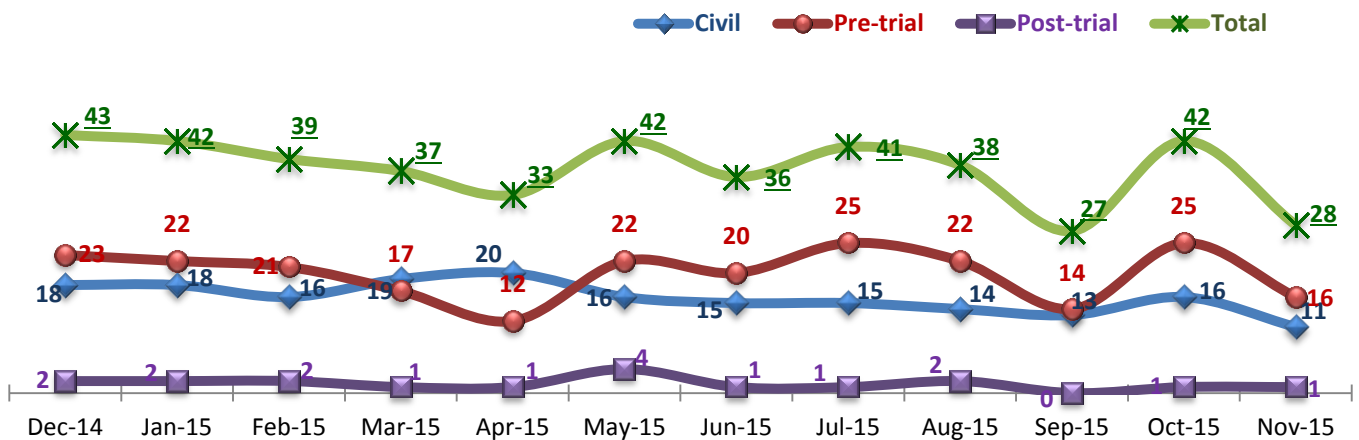
1. Admissions to SEH	1
2. Discharges from SEH	1
3. Average Daily Census.....	2
4. Transfers.....	2
5. 30-Day Readmission Rate	2
6. Unusual Incidents	3
7. Patient-Involved Unusual Incidents	3
8. Admissions vs. Patient UI Rate	4
9. Unusual Incidents by Severity.....	4
10. Selected Types of Incidents	4
11. Physical Assaults by Severity	5
12. Patient Injuries	5
13. Staff Injuries	5
14. Patient and Staff Falls.....	6
15. Percent of Patients Restrained or Secluded	6
16. Restraint Hours Rate & Seclusion Hours Rate	6
17. Elopements.....	7
18. Reported Medication Variance Events.....	7
19. Reported Adverse Drug Reactions	8
20. Percent of Missing Documentation on Med-Administration.....	8
21. Medication Refusal Rate*.....	8
22. Number of STAT Events and Individuals Involved	9
23. Percentage of SiteFM Work Orders Completed within 3 Days	9
24. Demographics.....	10
25. Length of Stay.....	11

- Appendix 1) Table – Census, Admissions & Discharges
- Appendix 2) Table – Key Performance Indicators
- Appendix 3) Table – Unusual Incident & Medication
- Appendix 4) Table – Restraint & Seclusion
- Appendix 5) Table – Demographic Information of Individuals in Care
- Appendix 6) Table – Unusual Incidents by Unit

Key Trends: Admission, Discharge, Transfer, Census, and Readmissions (1~6)

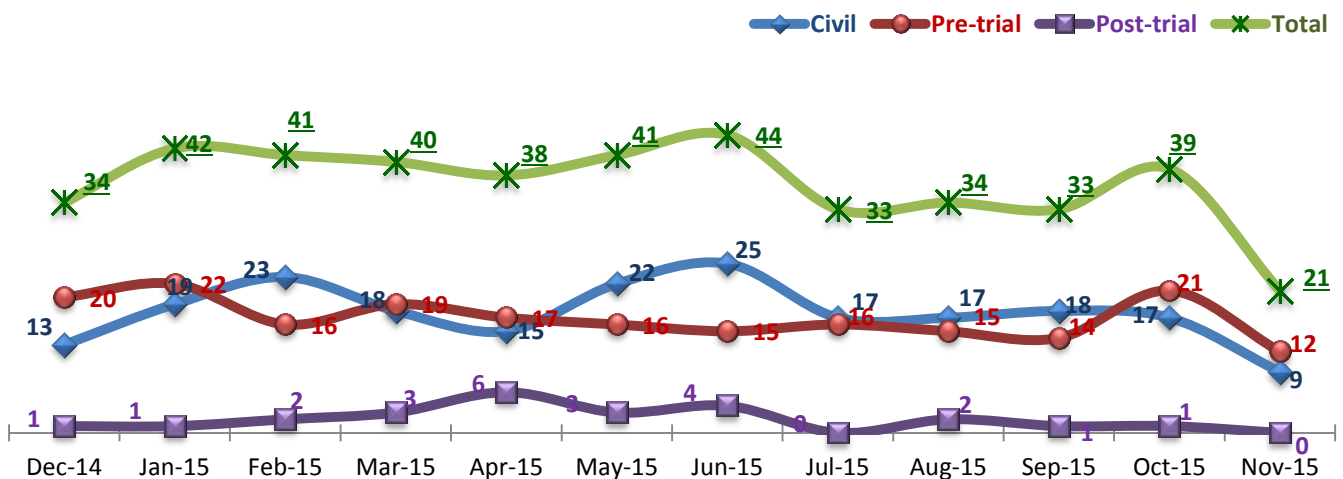
- There were 28 admissions in November 2015. This was a decline from the previous month and the second lowest in the last 12 months. This decline is attributed to the high census and unavailability of beds for new admissions. Throughout the month of November, the Hospital experienced a noticeably longer list of individuals (from the Court and the community waiting for admission) who could not be immediately admitted due to the unavailability of beds. The high census continues to reflect the Hospital’s challenges in promptly outplacing individuals who are ready for discharge to the community. In fact, the average daily census (ADC) continued to increase in November (280) while the number of discharges in November fell to 21, the lowest since December 2013.
- In November 2015, there was a total of 10 emergency medical transfers, which is below the 12-month average (14). The number of inter-unit transfers also declined noticeably and it may be due to the decline of admissions.
- The 30-day readmission rate has remained just below the national average (NPR at 6.9%)¹ since May 2015, but all of the readmissions for the past 6 months are those who were discharged in a civil legal status.

1. Admissions to SEH



* Number of admissions to SEH inpatient program, including transfers from forensic outpatient to inpatient program.

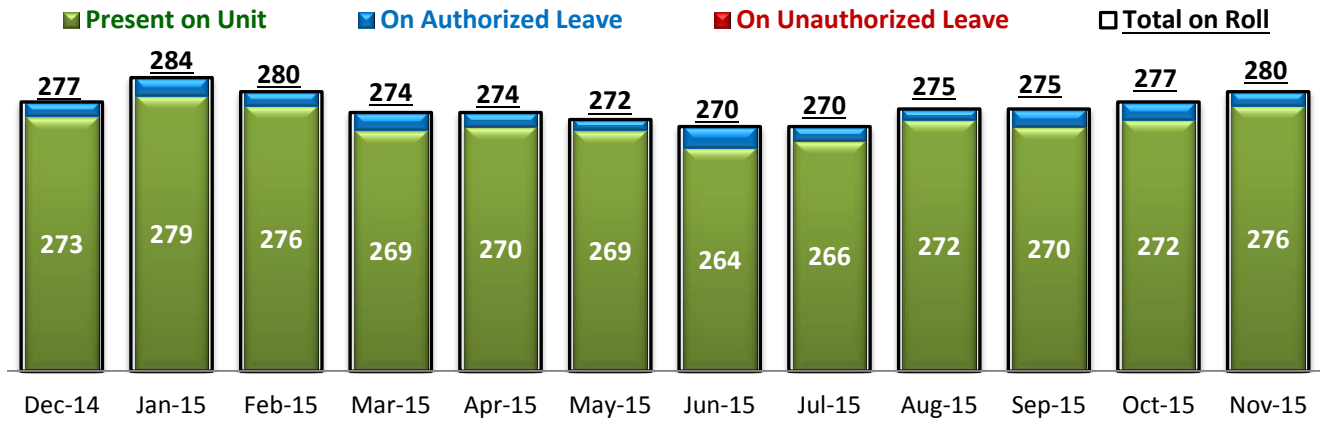
2. Discharges from SEH



* Number of discharges from SEH inpatient program, including transfers from inpatient to forensic outpatient program.

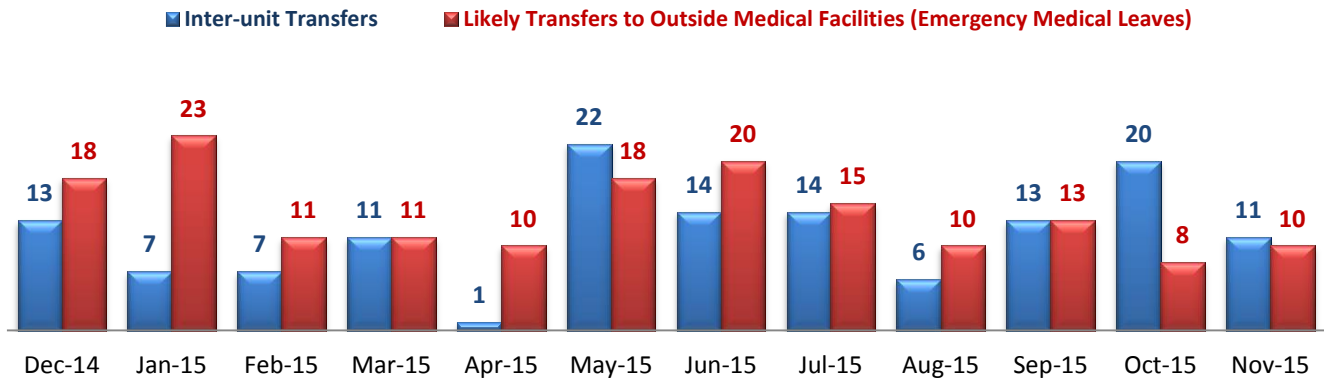
¹ NPR: National Public Rate as of June 2013 was published in November 2013 by National Association of State Mental Health Program Directors Research Institute (NRI), based on data collected from a number of state psychiatric hospitals nationwide.

3. Average Daily Census



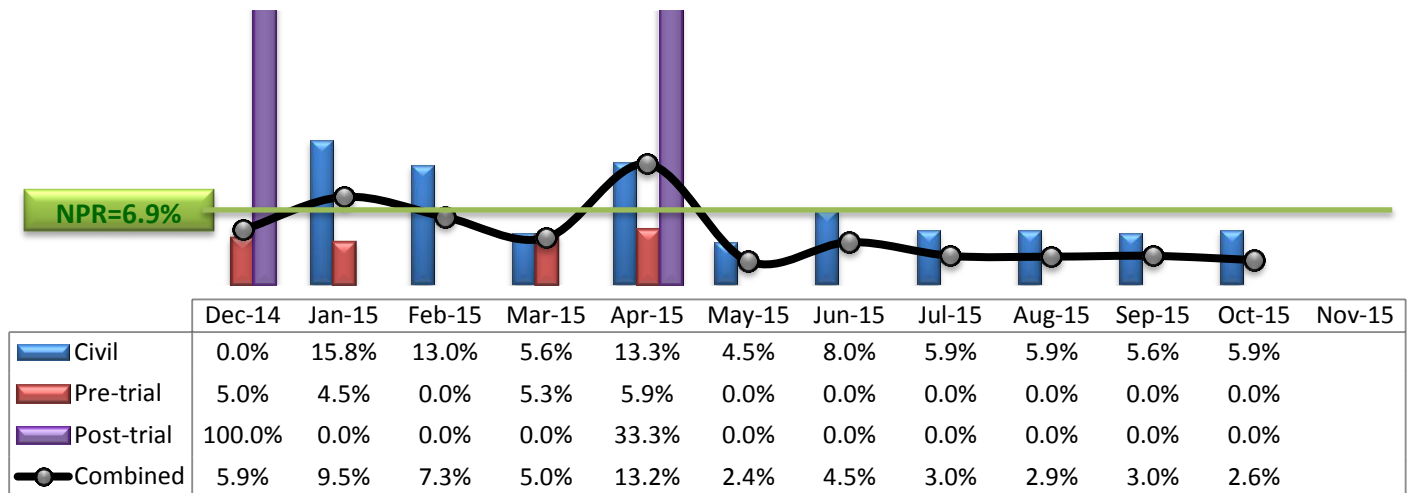
* Data above is the daily average number of individuals counted at 11:59 PM every day during each month.

4. Transfers



* Number of inter-unit transfers that occurred during month and number of emergency medical leaves that were initiated during month.

5. 30-Day Readmission Rate



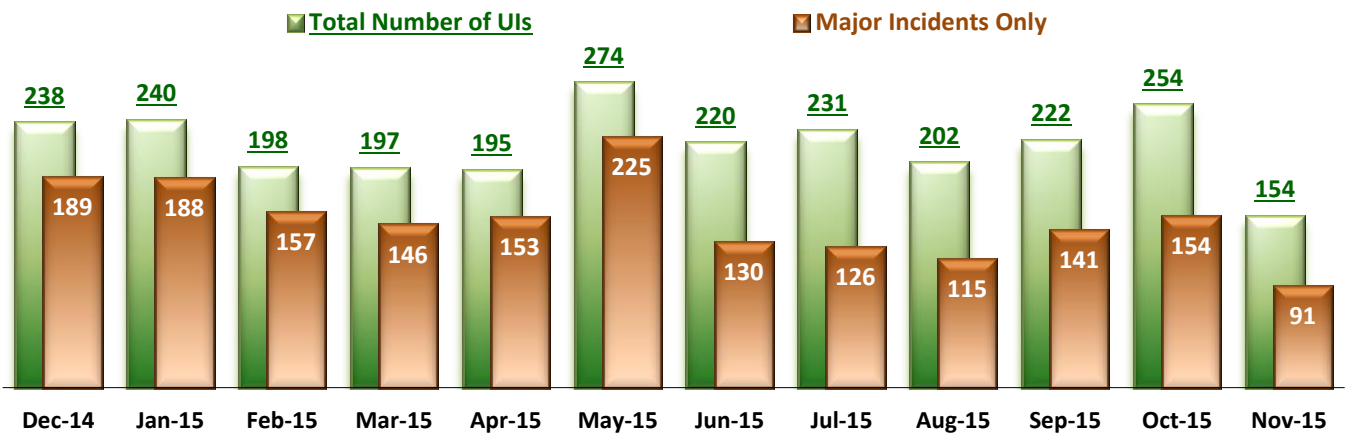
* Percent of discharges that returned to SEH within 30 days of discharges. It does not include those who may have been re-hospitalized at another psychiatric facility. This measure requires 30-day observation following discharge.

** The post-trial denominators (discharges) per month range only between one and six, making the monthly re-admission rate high when there is any. For example, in December 2014, there was only one post-trial discharge, which was readmitted within 30 days. Thus, the 30-day readmission rate for post-trial discharge for this month is 100%.

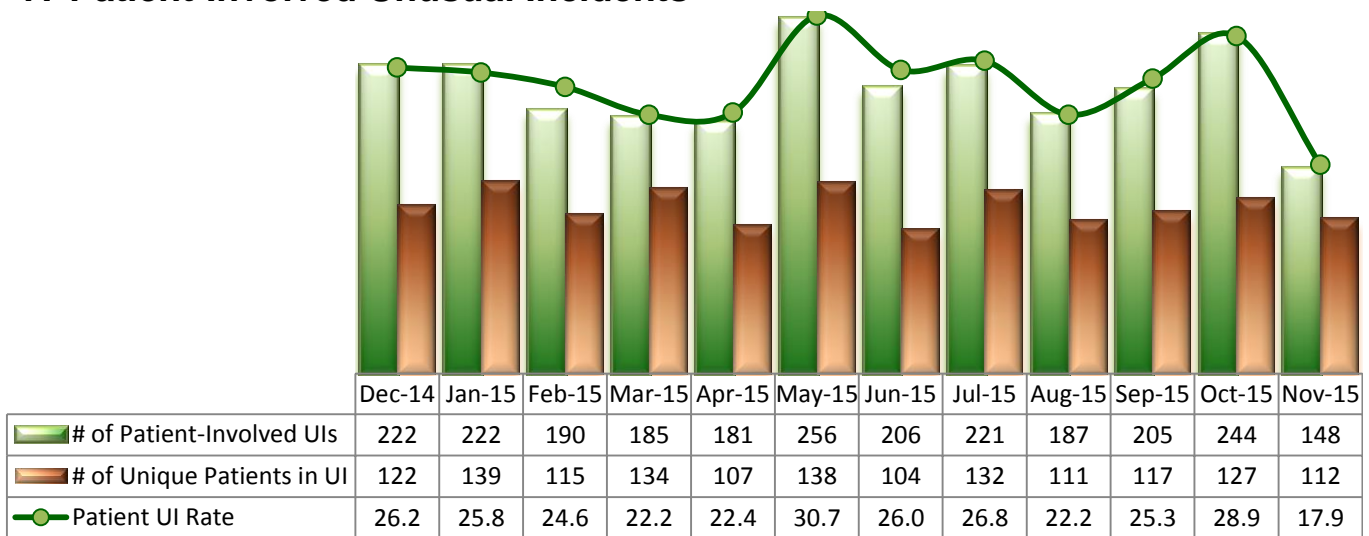
Key Trends: Unusual Incidents (6~17)

- The trend in the number of unusual incidents (UIs), particularly violence related incidents, tends to mirror the trend in the number of admissions as individuals at early stage of hospitalization are more likely to get agitated and involved in unusual incidents than those who have been in care for a longer period of time: a noticeable decrease in the number of admissions in November 2015 contributed to a significant decrease in the number of UIs (154, which is a reduction of 39% from 253 in October) and the patient UI rate (17.9 per 1000 patient days, which is a decline of 29% from 25.3 in October). The patient UI rate is the lowest since September 2013.
- In November 2015, the number of incidents involving aggressive behaviors with non-physical contact (51) decreased to its lowest level since March 2015. The physical assault rate (5.6 per 1000 patient days) also declined and was far below the 12-month average of 6.9. Particularly, high and medium severity assaults considerably decreased. Accordingly, the frequency of injury incidents triggered from violence significantly decreased as well and so did the use of restraint and seclusion.
- The patient fall rate in November (3.02 per 1000 patient days) increased from the previous month (2.84) but remained below the average patient fall rate of FY15 (3.2).
- There have been no elopements since August 2015.

6. Unusual Incidents

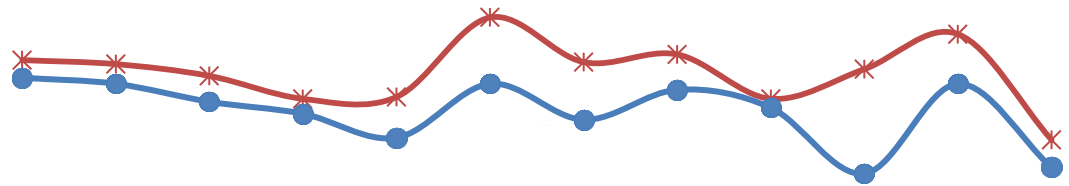


7. Patient-Involved Unusual Incidents



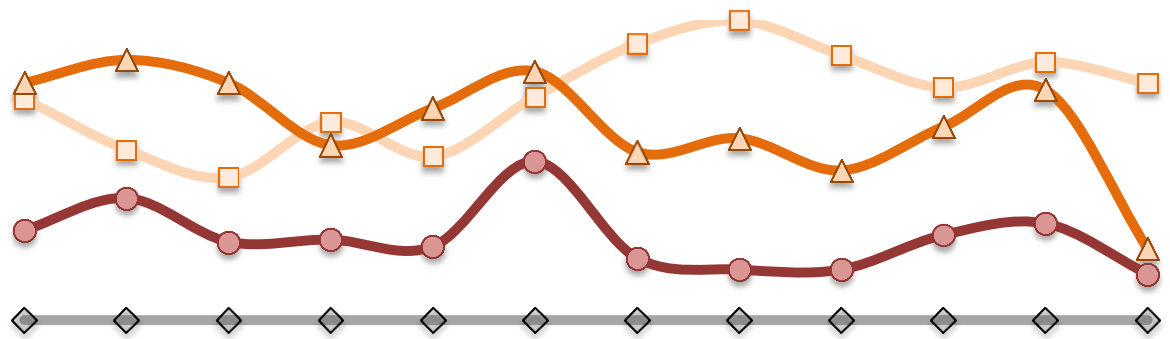
* The patient UI rate is the number of patient-involved unusual incidents reported for every 1000 inpatient days.

8. Admissions vs. Patient UI Rate



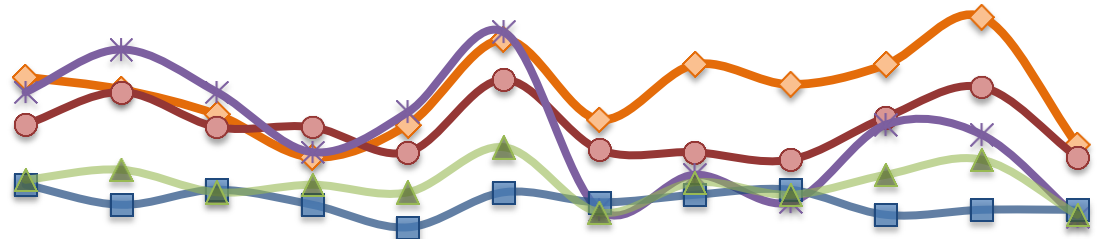
	Dec-14	Jan-15	Feb-15	Mar-15	Apr-15	May-15	Jun-15	Jul-15	Aug-15	Sep-15	Oct-15	Nov-15
—*— Patient UI Rate	26.2	25.8	24.6	22.2	22.4	30.7	26.0	26.8	22.2	25.3	28.9	17.9
—●— Admission	43	42	39	37	33	42	36	41	38	27	42	28

9. Unusual Incidents by Severity



	Dec-14	Jan-15	Feb-15	Mar-15	Apr-15	May-15	Jun-15	Jul-15	Aug-15	Sep-15	Oct-15	Nov-15
□ 1) Low	96	74	62	86	71	97	120	130	115	101	112	103
△ 2) Medium	103	113	103	76	92	108	73	79	65	84	100	31
● 3) High	39	53	34	35	32	69	27	22	22	37	42	20
◇ 4) Catstrp	0	0	0	0	0	0	0	0	0	0	0	0
Total UI	238	240	198	197	195	274	220	231	202	222	254	154

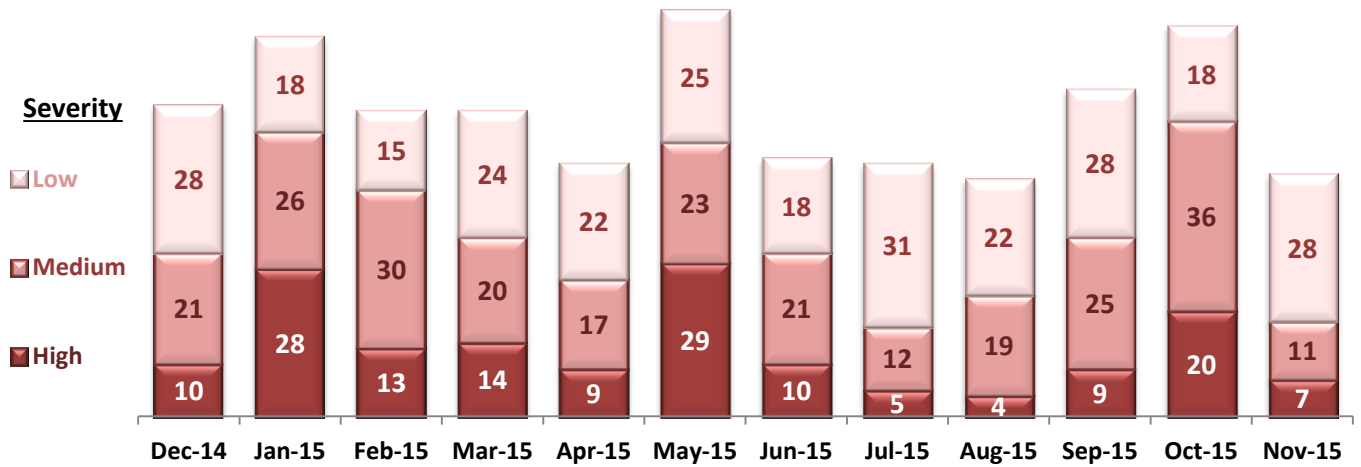
10. Selected Types of Incidents



	Dec-14	Jan-15	Feb-15	Mar-15	Apr-15	May-15	Jun-15	Jul-15	Aug-15	Sep-15	Oct-15	Nov-15
◆ Aggressive Behavior	78	73	63	46	59	93	61	83	75	83	102	51
● Physical Assault	59	72	58	58	48	77	49	48	45	62	74	46
* Pysch Emerg.	72	89	72	48	64	96	25	39	28	59	55	22
■ Fall	35	27	33	27	18	32	28	31	33	23	25	25
▲ Injury	37	41	32	35	32	50	24	36	31	39	45	23

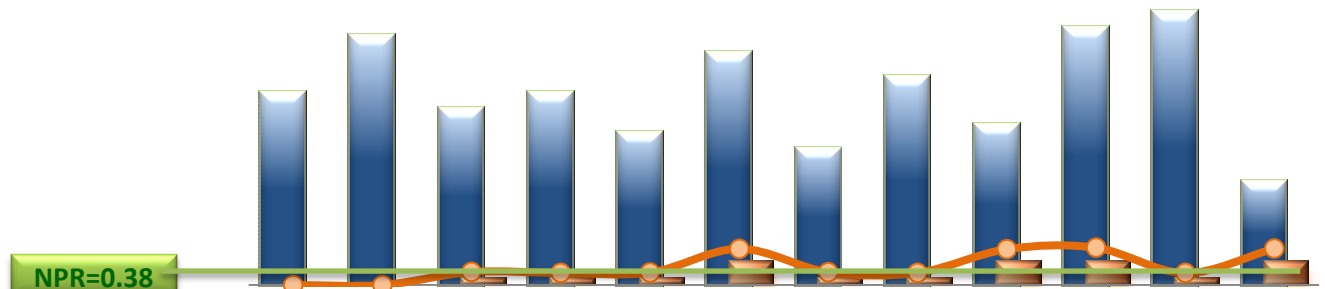
* These are incident types that are frequently reported. Some incidents may be counted in multiple categories. For example, a physical assault incident that accompanied psychiatric emergency and injury is counted under psychiatric emergency and injury as well as under physical assault. Injury is broadly defined to include any type of injuries regardless of the cause or severity level.

11. Physical Assaults by Severity



* Any physical assault that accompanies a code 13 or results in extensive injury needing off-unit treatment or transfer to ER is considered to be high severity; any physical assault that causes a minor injury that can be treated on unit is considered to be medium severity; and physical assault events that result in no injury are considered to be low severity.

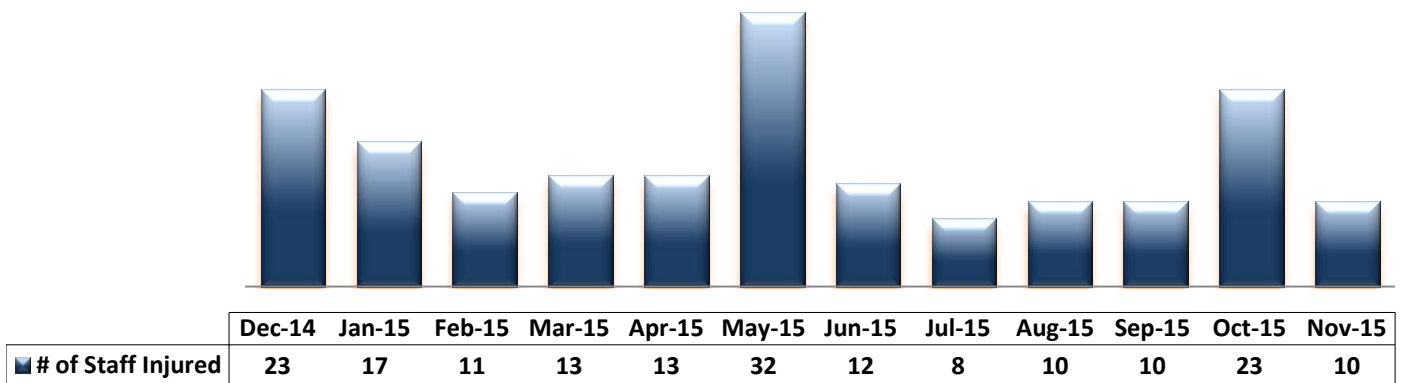
12. Patient Injuries



	Dec-14	Jan-15	Feb-15	Mar-15	Apr-15	May-15	Jun-15	Jul-15	Aug-15	Sep-15	Oct-15	Nov-15
Total Pts Injured	24	31	22	24	19	29	17	26	20	32	34	13
Major Pt Injuries*	0	0	1	1	1	3	1	1	3	3	1	3
Patient Injury Rate	0.00	0.00	0.13	0.12	0.12	0.36	0.13	0.12	0.36	0.37	0.12	0.36

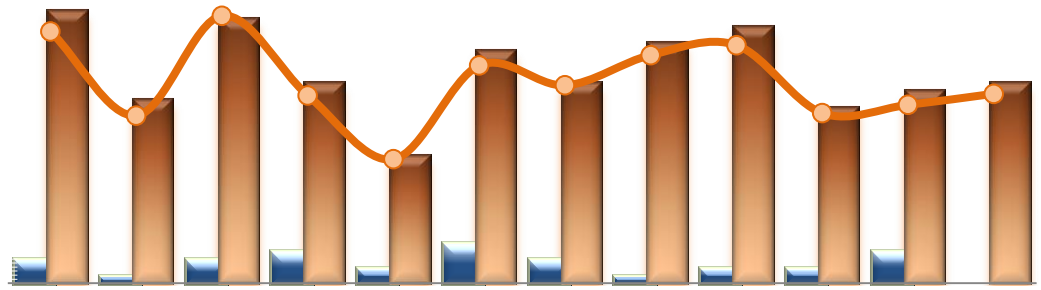
* Injury is broadly defined to include any type of injuries regardless of the cause or severity level. The total number of patients injured represents all of the reported injuries including minor injuries treated with first aid alone. However, the patient injury rate considers only the number of patient injuries that required beyond first-aid level treatment based on the NRI definition and the patient injury rate is the number of 'major' patient injuries per every 1000 inpatient days

13. Staff Injuries



* Injury is broadly defined to include any type of injuries regardless of the cause or severity level. The total number of staff injured represents all of the reported staff injuries including minor injuries treated with first aid alone.

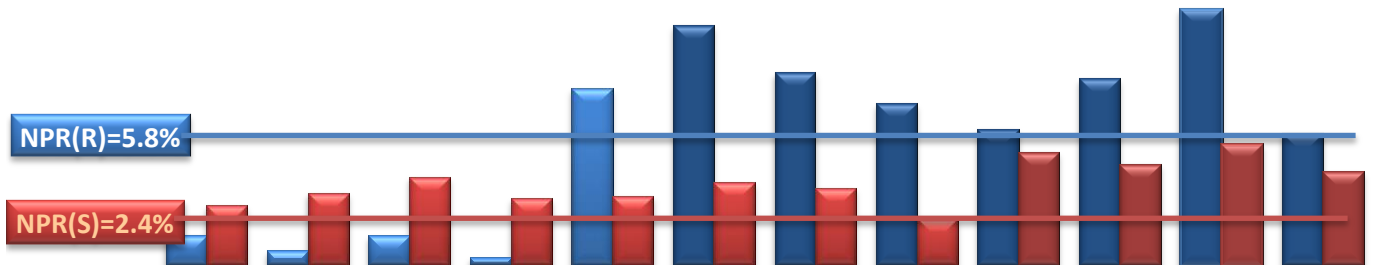
14. Patient and Staff Falls



	Dec-14	Jan-15	Feb-15	Mar-15	Apr-15	May-15	Jun-15	Jul-15	Aug-15	Sep-15	Oct-15	Nov-15
Total Staff who Fell	3	1	3	4	2	5	3	1	2	2	4	0
Total Patients who Fell	34	23	33	25	16	29	25	30	32	22	24	25
Patient Fall Rate	4.01	2.67	4.26	2.99	1.98	3.47	3.15	3.64	3.79	2.71	2.84	3.02

* The patient fall rate is the number of patient falls per every 1000 inpatient days.

15. Percent of Patients Restrained or Secluded



	Dec-14	Jan-15	Feb-15	Mar-15	Apr-15	May-15	Jun-15	Jul-15	Aug-15	Sep-15	Oct-15	Nov-15
Restraint	1.3%	0.6%	1.3%	0.3%	7.5%	10.2%	8.2%	6.9%	5.8%	7.9%	10.9%	5.6%
Seclusion	2.5%	3.1%	3.8%	2.8%	2.9%	3.5%	3.3%	2.0%	4.8%	4.3%	5.1%	4.0%

* Percent of unique patients who were restrained at least once and percent of unique patients who were secluded at least once. The denominator includes all individuals who were served in care >=1 day during month.

** Prior to April 2015, the Hospital tracked only mechanical restraint events, but the Hospital's restraint policy has changed to include any physical holds. The sudden increase of the restraint data as of April 2015 reflects this change.

16. Restraint Hours Rate & Seclusion Hours Rate

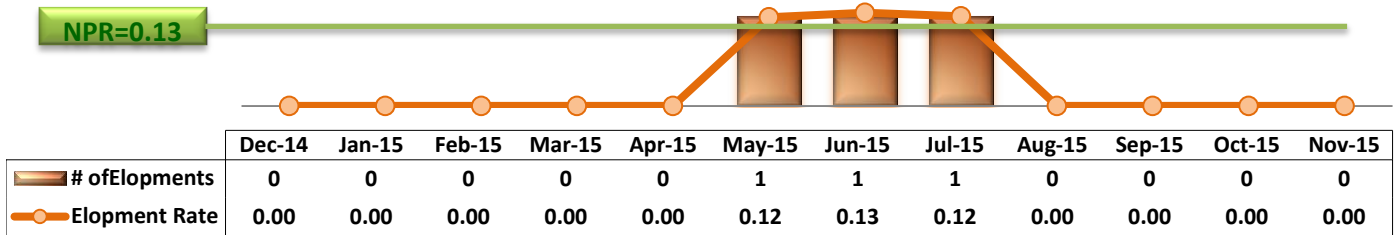


	Dec-14	Jan-15	Feb-15	Mar-15	Apr-15	May-15	Jun-15	Jul-15	Aug-15	Sep-15	Oct-15	Nov-15
Restraint	0.105	0.072	0.015	0.004	0.031	0.098	0.074	0.163	0.008	0.031	0.084	0.051
Seclusion	0.041	0.045	0.088	0.101	0.043	0.060	0.150	0.067	0.062	0.260	0.281	0.043

* Restraint/Seclusion Hours Rate: Number of hours spent in restraint/seclusion for every 1000 inpatient hours.

** The duration of each physical hold event is counted as 1 minute as a physical hold is ordered and used only as a temporary intervention that lasts less than a minute to break up any physical conflicts or to administer emergency medications.

17. Elopements

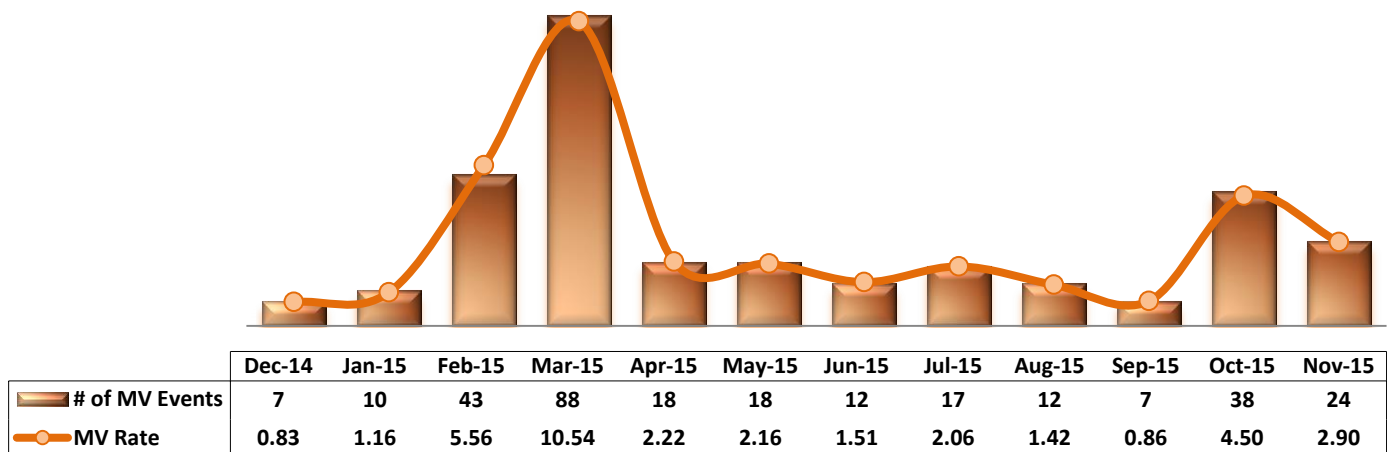


* Data herein counts the number of unauthorized leaves for any duration that were initiated during month and were recorded in Avatar. The elopement rate is the number of those unauthorized leaves that occurred for every 1000 inpatient days.

Key Trends: Medication Documentation, Medication Variance, ADR, and STAT (18~22)

- The number of reported MVs ranged between 7 and 18 per month since April 2015 and increased significantly in October (38). It declined noticeably in November but remained above 20. A large number of MVs reported for the past two months involved inventory discrepancies between the log and actual medications audited in PYXIS (medication dispensing system).
- The number of reported ADRs ranged between zero (0) and four (4) per month in the past 12 months.
- The rate of missing documentation by nursing staff on medication administration decreased to 0.33%, which is the lowest since April 2013. The medication refusal rate, however, increased significantly, reaching its highest level at 7.4% since January 2015.
- During the month of November 2015, the number of STAT events (53) dropped by more than 55%, from 119 in October. The number of unique individuals involved in one or more STAT events in November (31) is also significantly lower than that in October (49). Additionally, only two individuals were involved in three or more STAT events during the month of November.

18. Reported Medication Variance Events



* MV Rate: Number of reported medication variance events that occurred for every 1000 inpatient days.

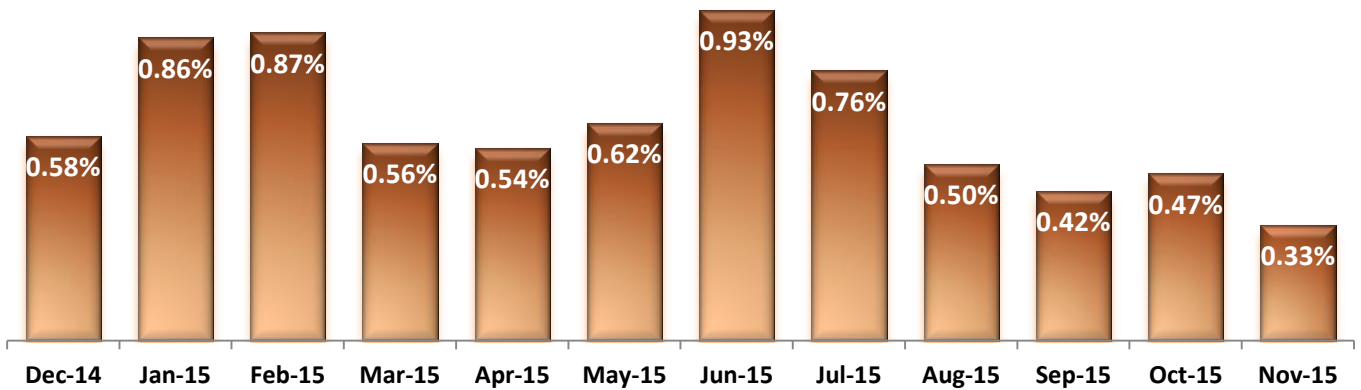
19. Reported Adverse Drug Reactions



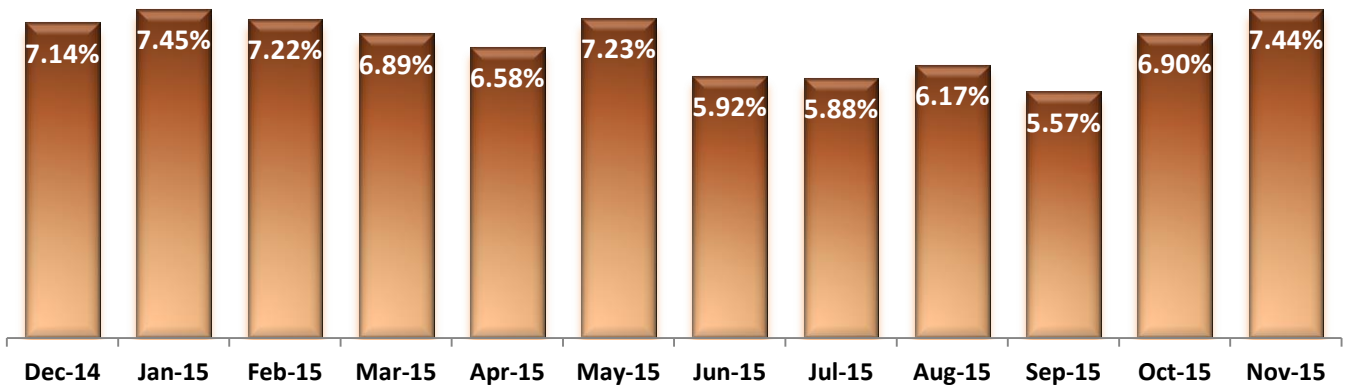
	Dec-14	Jan-15	Feb-15	Mar-15	Apr-15	May-15	Jun-15	Jul-15	Aug-15	Sep-15	Oct-15	Nov-15
# of ADRs	3	4	1	4	2	3	3	2	3	1	0	3
ADR Rate	0.35	0.46	0.13	0.48	0.25	0.36	0.38	0.24	0.36	0.12	0.00	0.36

* ADR Rate: Number of reported adverse drug reaction events that occurred for every 1000 inpatient days.

20. Percent of Missing Documentation on Med-Administration

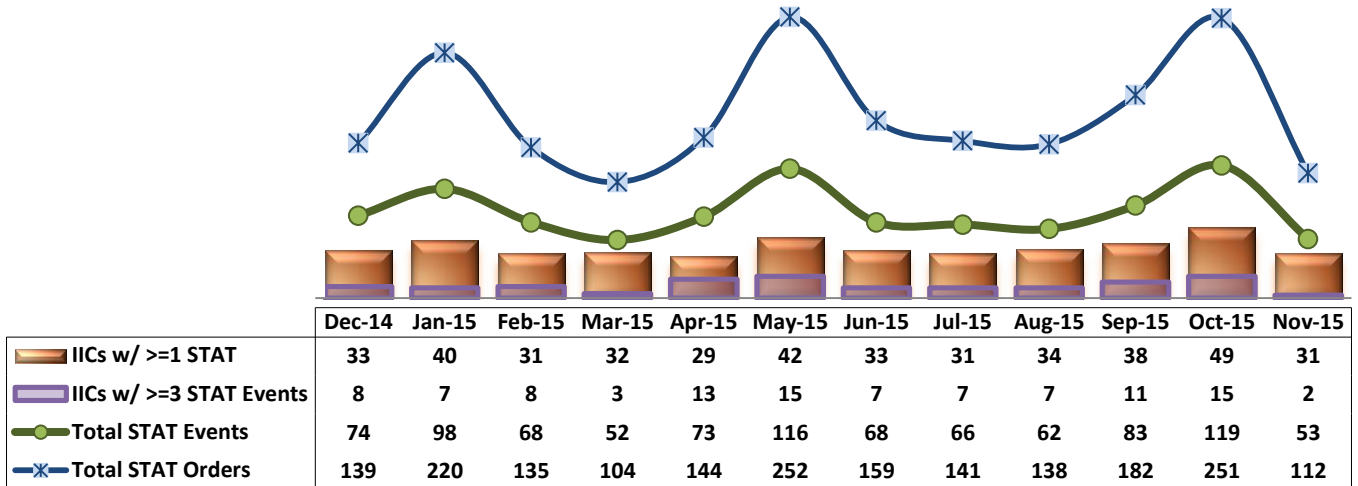


21. Medication Refusal Rate*



* Medication Refusal Rate: the number of refused medication doses divided by the total number of doses scheduled for administration.

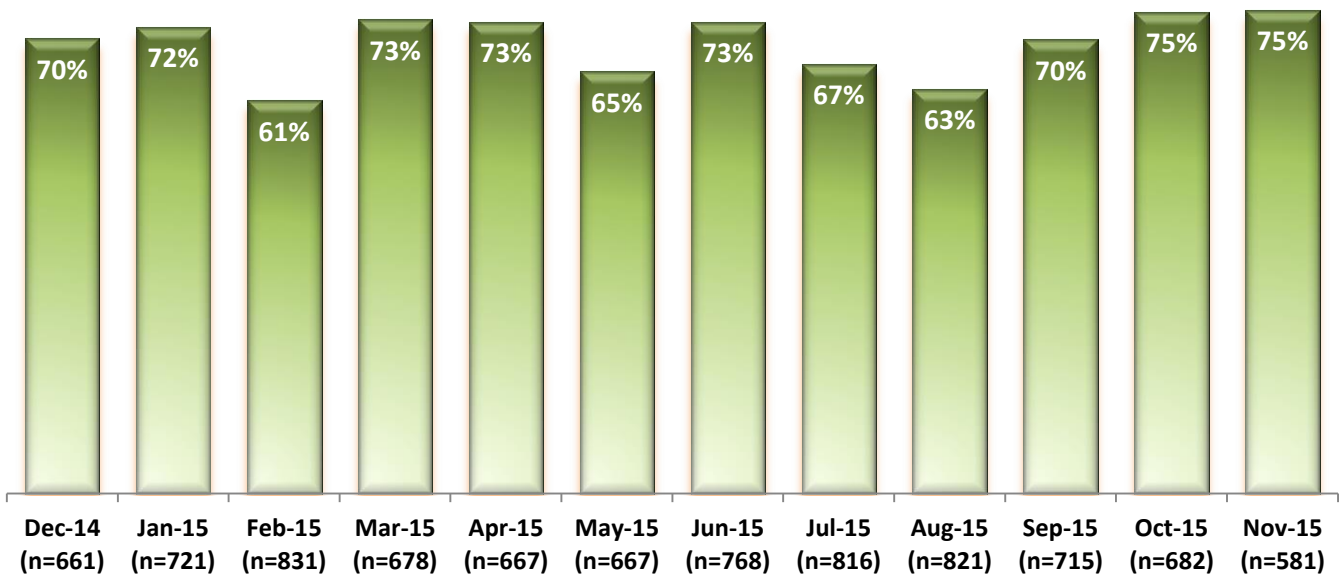
22. Number of STAT Events and Individuals Involved



Key Trends: Environment of Care (23)

- During FY2015, on average, the Hospital received a total of 735 work orders per month (or 24 per day) through SiteFM. Of those, 68% were completed within 3 days.
- In the month November 2015, the Hospital received a total of 581 SiteFM work orders (or 19 per day), which is not only a noticeable decrease from the previous month but also the lowest level since PRISM tracked and reported this measure in 2014.
- The 3-day completion rate of SiteFM work orders in November 2015 remained at 75%, the highest rate since March 2014.

23. Percentage of SiteFM Work Orders Completed within 3 Days



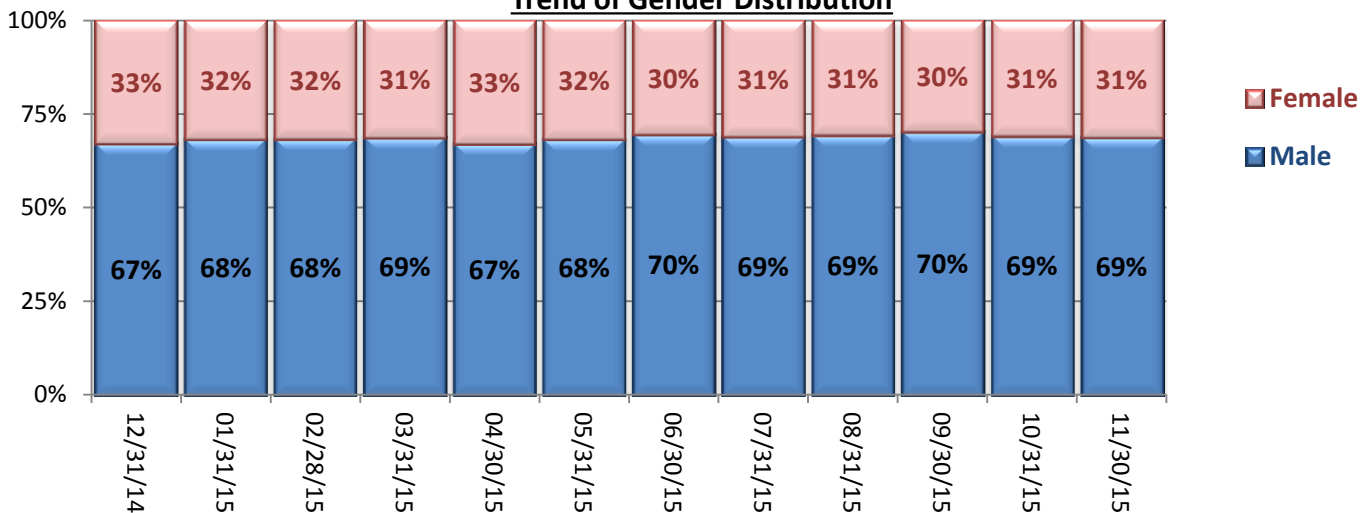
* This data was analyzed and included in PRISM for the first time in December 2014.

Key Trends: Demographics, Legal Status, and Length of Stay (24-25)

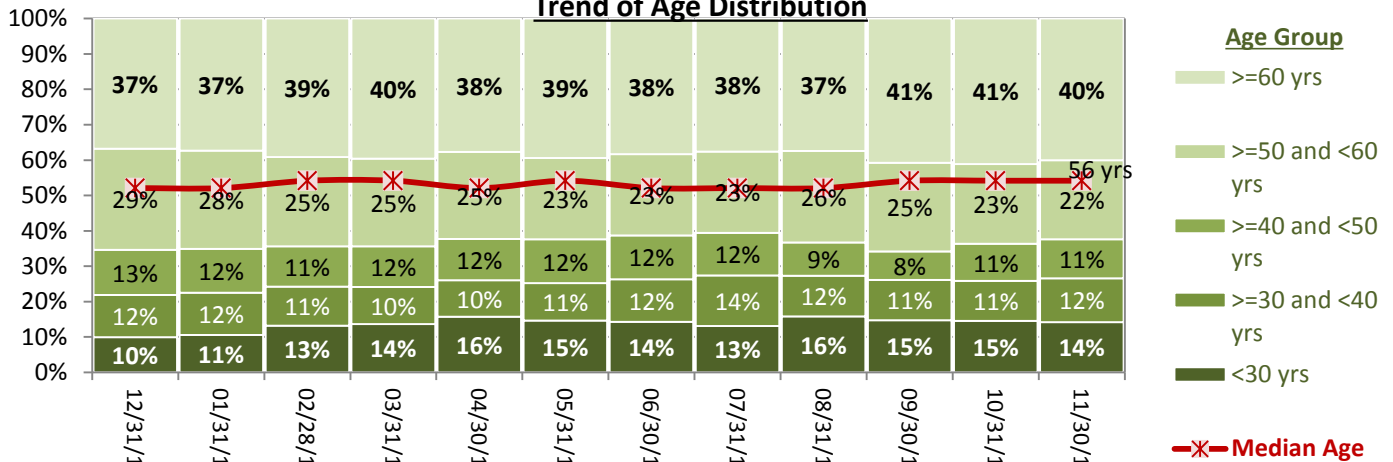
- The proportion of female individuals remaining in the Hospital’s care increased in FY14, from 26% in October 2013 to 33% in September 2014; since then, the percentage of female individuals remained in the range of 30% to 33% throughout FY15 and continued to remain in that range in October and November 2015.
- In September 30, 2015, the percentage of individuals aged 60 years or older remaining in care (41%) reached its highest level since the Hospital reported the trend of age distribution in 2008, and that percentage continued to remain above 40%. The percentage of younger population, particularly those under 30 years, noticeably increased during the first half of FY15 and hovered around 15% for several months. An increase in the proportion of younger population in care may be due in part to an increase of pre-trial admissions, which tend to include more of the younger population.
- The median length of stay (LOS) for individuals remaining in care decreased in FY14 and the first quarter of FY15, falling to the lowest level (362 days or 12 months) at the end of December 2014. Since then, the median LOS increased gradually, reaching 466 days (about 15 months) at the end of September 2015. The overall median and average LOS declined but only marginally in October and November 2015 due in part to a large number of admissions that occurred in October: more recent admissions will have shorter LOS and accordingly lower the median and average LOS of the overall population.

24. Demographics

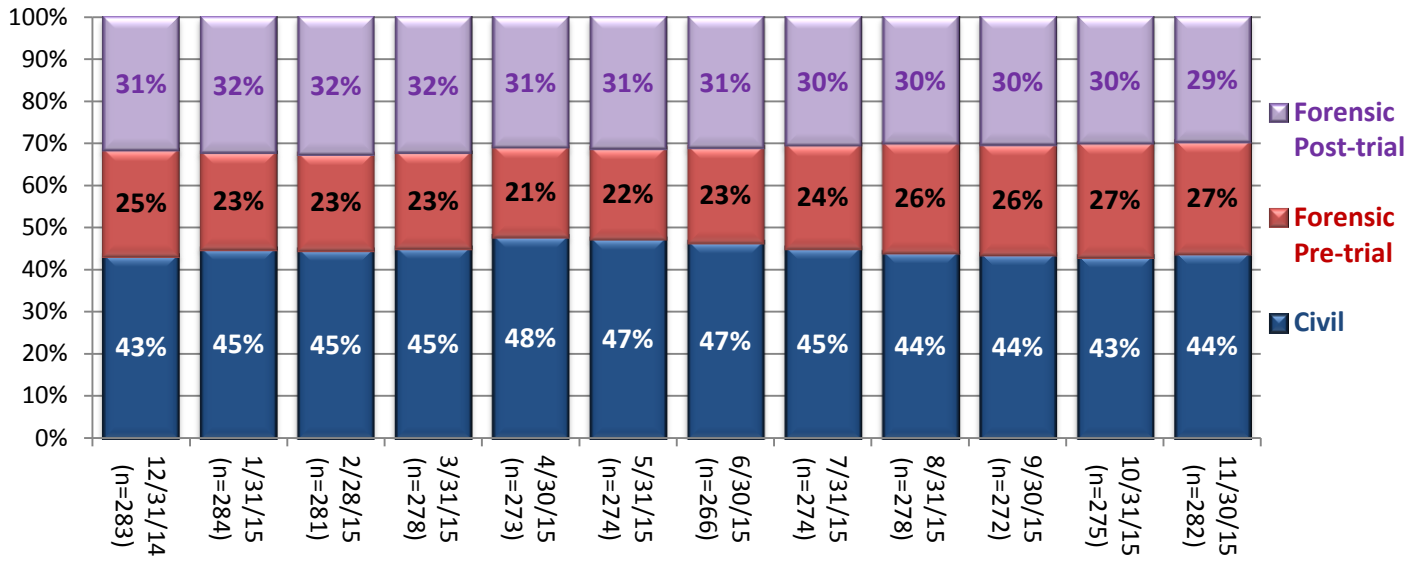
Trend of Gender Distribution



Trend of Age Distribution

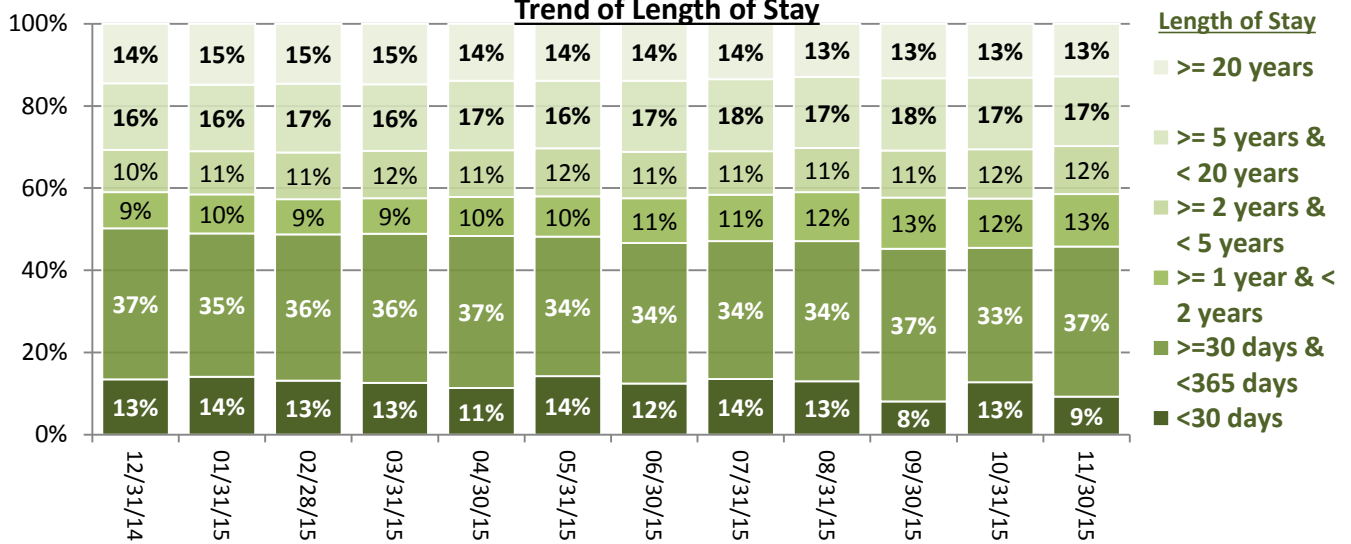


Trend of Legal Status Distribution

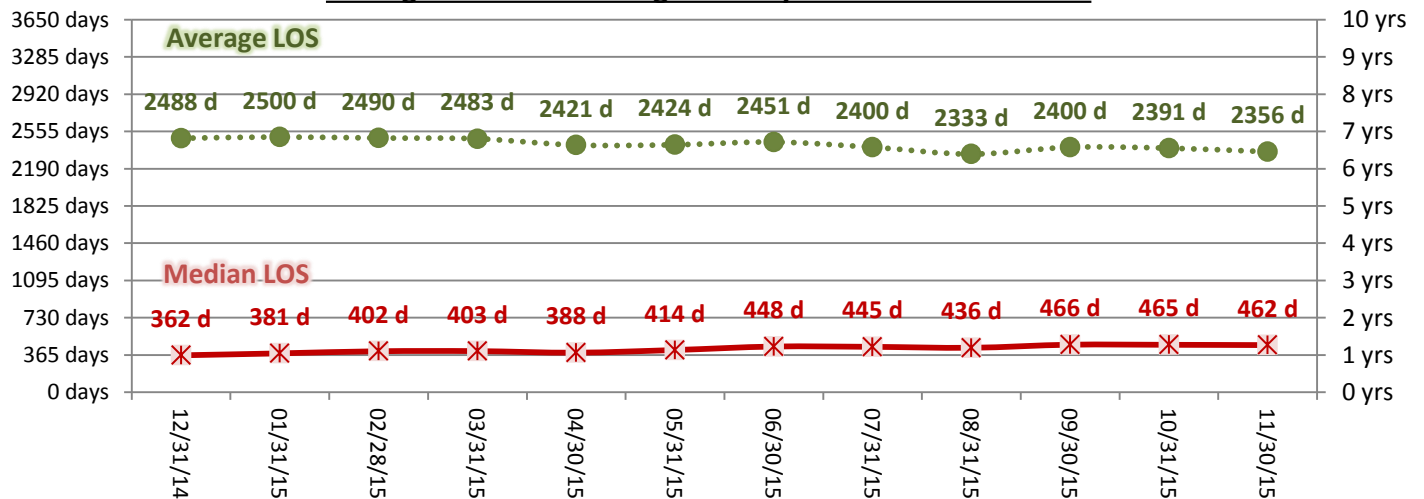


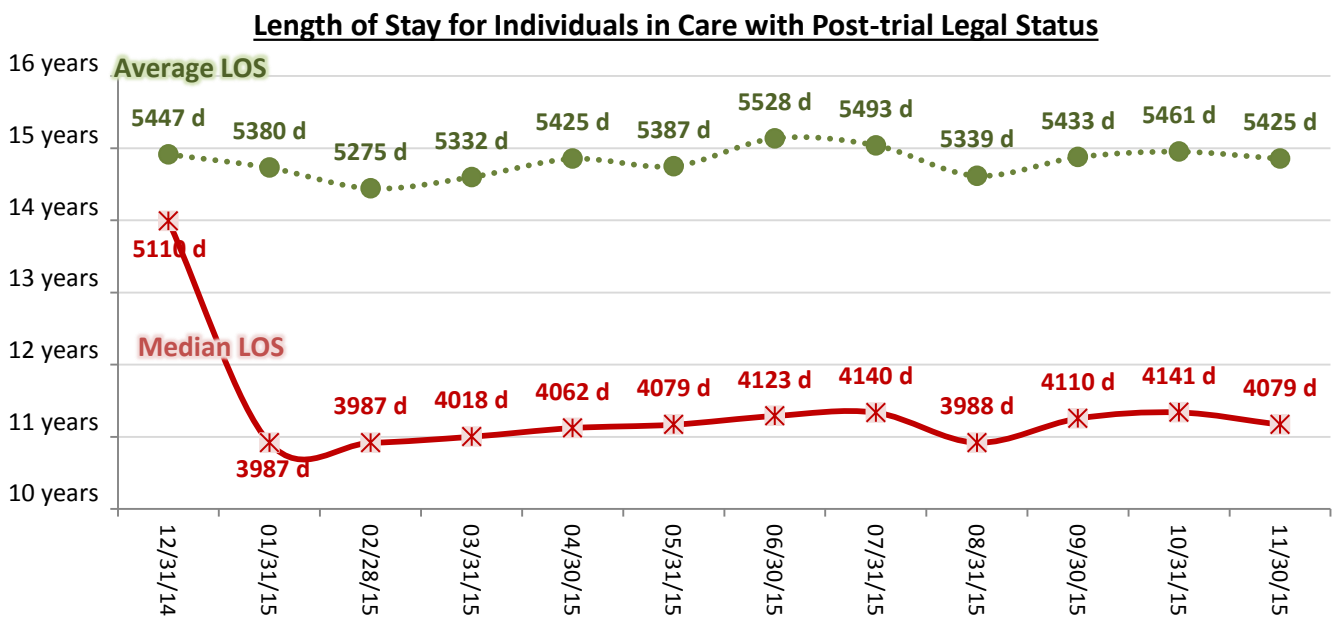
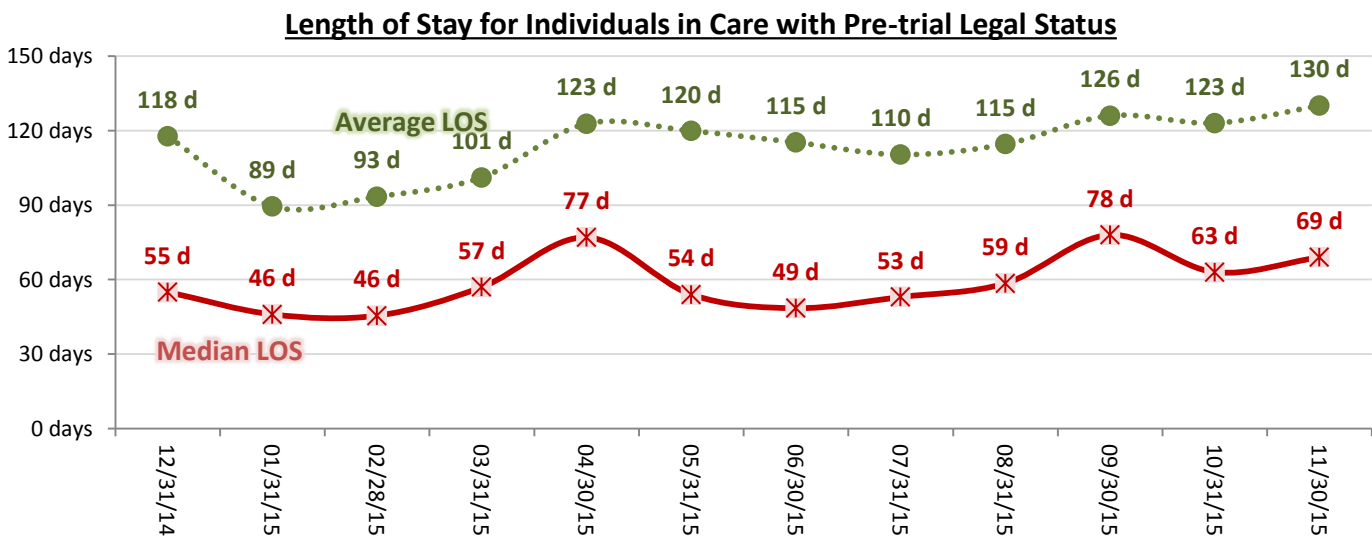
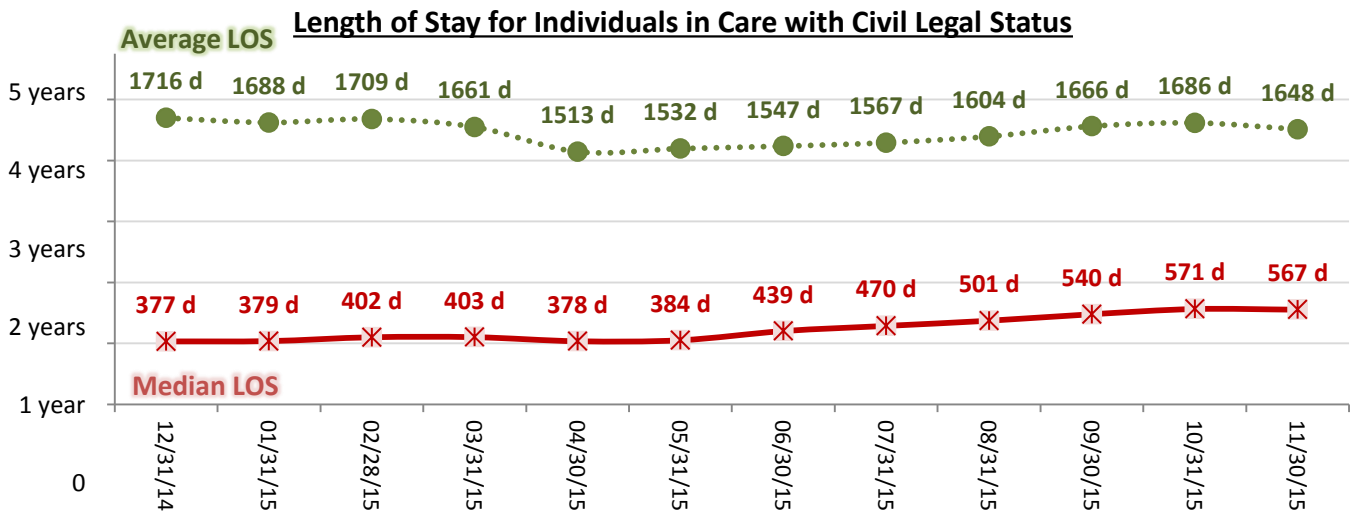
25. Length of Stay

Trend of Length of Stay



Average and Median Length of Stay for Individuals in Care





Performance Related Information for Staff & Managers

1. Census, Admissions, Discharges & Transfers

Data Source: Avatar

Updated as of 12/15/15

Category	Dec-14	Jan-15	Feb-15	Mar-15	Apr-15	May-15	Jun-15	Jul-15	Aug-15	Sep-15	Oct-15	Nov-15	Monthly Average	Total (12mths)	Figure	
Admissions	Civil	18	18	16	19	20	16	15	15	14	13	16	11	16	191	Figure 1
	Pre-trial	23	22	21	17	12	22	20	25	22	14	25	16	20	239	
	Post-trial	2	2	2	1	1	4	1	1	2	0	1	1	2	18	
	Total	43	42	39	37	33	42	36	41	38	27	42	28	37	448	
Discharges	Civil	13	19	23	18	15	22	25	17	17	18	17	9	18	213	Figure 2
	Pre-trial	20	22	16	19	17	16	15	16	15	14	21	12	17	203	
	Post-trial	1	1	2	3	6	3	4	0	2	1	1	0	2	24	
	Total	34	42	41	40	38	41	44	33	34	33	39	21	37	440	
Net Increase During Month	Civil	5	-1	-7	1	5	-6	-10	-2	-3	-5	-1	2		-22	
	Pre-trial	3	0	5	-2	-5	6	5	9	7	0	4	4		36	
	Post-trial	1	1	0	-2	-5	1	-3	1	0	-1	0	1		-6	
	Total	9	0	-2	-3	-5	1	-8	8	4	-6	3	7		8	
All Individuals on Roll at End of Month	283	284	281	278	273	274	266	274	278	272	275	282	277			
a. Present on Unit	281	275	274	276	270	269	264	271	275	267	268	278	272			
b. On AL	2	9	7	2	3	5	2	3	3	5	7	4	4			
c. On UL	0	0	0	0	0	0	0	0	0	0	0	0	0			
All Individuals on Roll: Daily Average during Month*	277	284	280	274	274	272	270	270	275	275	277	280	276		Figure 3	
a. Present on Unit	273	279	276	269	270	269	264	266	272	270	272	276	271			
b. On AL	4	5	4	5	4	3	6	4	3	5	5	4	3.8			
c. On UL	0	0	0	0	0	0	0	0	0	0	0	0	0.00			
Patient Days**	8472	8610	7738	8348	8095	8349	7925	8247	8435	8114	8439	8277	8254	99049		
Inter-Unit Transfers during Month	13	7	7	11	1	22	14	14	6	13	20	11	12	139	Figure 4	
Medical Leaves Initiated during Month	Emergency	18	23	11	11	10	18	20	15	10	13	8	10	14		167
Non-Emer	61	59	55	71	79	81	96	95	89	69	86	72	76	913		
Total	79	82	66	82	89	99	116	110	99	82	94	82	90	1080		
Non-Medical Leaves Initiated during Month	393	412	323	391	334	251	323	374	322	290	356	341	343	4110		
UL Initiated during Month	0	0	0	0	0	1	1	1	0	0	0	0	0	3		
Total Unique Patients Served during Month	315	326	320	317	306	314	305	305	311	302	312	302	311			
30 Day Readmission ***	Civil	0	3	3	1	2	1	2	1	1	1	1		1	16	
	Pre-trial	1	1	0	1	1	0	0	0	0	0	0		0	4	
	Post-trial	1	0	0	0	2	0	0	0	0	0	0		0	3	
	Total	2	4	3	2	5	1	2	1	1	1	1		2	23	

* This is the average number of individuals served on a given day for the respective month. Due to rounding from average calculation, numbers from its subcategories a, b, & c may not add up to the total number on this row.

** It counts the number of patients who are present on the unit and excludes those on authorized or unauthorized leave at 11:59pm on a given day.

*** Number of patients returning within 30 days of discharges that occurred during month.

Performance Related Information for Staff & Managers

2. Key Performance Indicators

Data Source: UI DB, MV DB, ADR DB, Restraint/Seclusion Log, and Avatar

Updated as of 12/15/15

Category	Dec-14	Jan-15	Feb-15	Mar-15	Apr-15	May-15	Jun-15	Jul-15	Aug-15	Sep-15	Oct-15	Nov-15	Monthly Average	NPR* (Jun-13)	Figure
30 Day Readmit (Discharge Cohort)**	Civil	0.0%	15.8%	13.0%	5.6%	13.3%	4.5%	8.0%	5.9%	5.9%	5.6%	5.9%	8.2%		Figure 5
	Pre-trial	5.0%	4.5%	0.0%	5.3%	5.9%	0.0%	0.0%	0.0%	0.0%	0.0%	0.0%	2.1%		
	Post-trial	100.0%	0.0%	0.0%	0.0%	33.3%	0.0%	0.0%	N/A	0.0%	0.0%	0.0%	13.6%		
	Combined	5.9%	9.5%	7.3%	5.0%	13.2%	2.4%	4.5%	3.0%	2.9%	3.0%	2.6%	5.7%	6.9%	
Number of Unusual Incidents*	238	240	198	197	195	274	220	231	202	222	254	154	219		Figure 6
Patient Unusual Incident Rate	26.2	25.8	24.6	22.2	22.4	30.7	26.0	26.8	22.2	25.3	28.9	17.9	24.9		Figure 7
UI by Severity	Catastrophe	0	0	0	0	0	0	0	0	0	0	0	0		Figure 9
	High	39	53	34	35	32	69	27	22	22	37	42	20	36	
	Medium	103	113	103	76	92	108	73	79	65	84	100	31	86	
	Low	96	74	62	86	71	97	120	130	115	101	112	103	97	
Physical Assault Incident Rate	7.0	8.4	7.5	6.9	5.9	9.2	6.2	5.8	5.3	7.6	8.8	5.6	7.0		
Selected Types of Incidents	Physical Assault	59	72	58	58	48	77	49	48	45	62	74	46	58	Figure 10
	Aggressive Behav.	78	73	63	46	59	93	61	83	75	83	102	51	72	
	Psych Emergency	72	89	72	48	64	96	25	39	28	59	55	22	56	
	Fall	35	27	33	27	18	32	28	31	33	23	25	25	28	
	Injury	37	41	32	35	32	50	24	36	31	39	45	23	35	
Physical Assaults by Severity	High	10	28	13	14	9	29	10	5	4	9	20	7	13	Figure 11
	Medium	21	26	30	20	17	23	21	12	19	25	36	11	22	
	Low	28	18	15	24	22	25	18	31	22	28	18	28	23	
Patient Injury Rate***	0.00	0.00	0.13	0.12	0.12	0.36	0.13	0.12	0.36	0.37	0.12	0.36	0.18	0.38	
Patients with Major Injuries***	0	0	1	1	1	3	1	1	3	3	1	3	2		Figure 12
Total Patients Injured***	24	31	22	24	19	29	17	26	20	32	34	13	24		
Total Staff Injured***	23	17	11	13	13	32	12	8	10	10	23	10	15		Figure 13
Patient Fall Rate	4.01	2.67	4.26	2.99	1.98	3.47	3.15	3.64	3.79	2.71	2.84	3.02	3.21		Figure 14
Total Patients who Fell	34	23	33	25	16	29	25	30	32	22	24	25	27		
Total Staff who Fell	3	1	3	4	2	5	3	1	2	2	4	0	3		
Percent of Patients Restrained	1.3%	0.6%	1.3%	0.3%	7.5%	10.2%	8.2%	6.9%	5.8%	7.9%	10.9%	5.6%	1.1%	5.8%	Figure 15
Percent of Patients Secluded	2.5%	3.1%	3.8%	2.8%	2.9%	3.5%	3.3%	2.0%	4.8%	4.3%	5.1%	4.0%	3.5%	2.4%	
Restraint Hours Rate	0.105	0.072	0.015	0.004	0.031	0.098	0.074	0.163	0.008	0.031	0.084	0.051	0.068	0.71	Figure 16
Seclusion Hours Rate	0.041	0.045	0.088	0.101	0.043	0.060	0.150	0.067	0.062	0.260	0.281	0.043	0.103	0.44	
Elopement Rate	0.00	0.00	0.00	0.00	0.00	0.12	0.13	0.12	0.00	0.00	0.00	0.00	0.03	0.13	Figure 17
Medication Variance Rate	0.83	1.16	5.56	10.54	2.22	2.16	1.51	2.06	1.42	0.86	4.50	2.90	2.97		Figure 18
Adverse Drug Reaction Rate	0.35	0.46	0.13	0.48	0.25	0.36	0.38	0.24	0.36	0.12	0.00	0.36	0.29		Figure 19
Missing Med-Admin Documentation	0.58%	0.86%	0.87%	0.56%	0.54%	0.62%	0.93%	0.76%	0.50%	0.42%	0.47%	0.33%	0.62%		Figure 20
Percent of Medication Refusal	7.14%	7.45%	7.22%	6.89%	6.58%	7.23%	5.92%	5.88%	6.17%	5.57%	6.90%	7.44%	6.71%		Figure 21
SiteFM Work Orders Completed within 3 days	70%	72%	61%	73%	73%	65%	73%	67%	63%	70%	75%	75%	69%		Figure 23
Total SiteFM Work Orders	466	521	506	498	487	436	561	543	515	503	509	435	498		
Total SiteFM Work Orders	661	721	831	678	667	667	768	816	821	715	682	581	717		

* National Public Rate, NASMHPD Research Institute, National Research Institute (NRI), Data as of June 2013, Published in November 2013.

** Percentage of patients returning within 30 days of discharges that occurred during month

*** Refer to the next page [UI & Medication]

Performance Related Information for Staff & Managers

3. Unusual Incident & Medication

Data Source: UI DB, MV DB, ADR DB, and Avatar

Updated as of 12/15/15

Category		Dec-14	Jan-15	Feb-15	Mar-15	Apr-15	May-15	Jun-15	Jul-15	Aug-15	Sep-15	Oct-15	Nov-15	Monthly Average	Total (12mths)	NPR* (Jun-13)
Unusual Incidents (excluding MV)**	Total UIs	238	240	198	197	195	274	220	231	202	222	254	154	219	2625	
	Major UIs Only	189	188	157	146	153	225	130	126	115	141	154	91	151	1815	
	Pt Involved UI Only	222	222	190	185	181	256	206	221	187	205	244	148	206	2467	
	Patient UI Rate	26.2	25.8	24.6	22.2	22.4	30.7	26.0	26.8	22.2	25.3	28.9	17.9		24.9	
Unique Pts Involved in UI		122	139	115	134	107	138	104	132	111	117	127	112	122	1458	
Selected Types of Incidents	Physical Assault	59	72	58	58	48	77	49	48	45	62	74	46	58	696	
	Aggressive Behavior	78	73	63	46	59	93	61	83	75	83	102	51	72	867	
	Psych Emergency	72	89	72	48	64	96	25	39	28	59	55	22	56	669	
	Fall	35	27	33	27	18	32	28	31	33	23	25	25	28	337	
	Injury	37	41	32	35	32	50	24	36	31	39	45	23	35	425	
Physical Assault Rate		7.0	8.4	7.5	6.9	5.9	9.2	6.2	5.8	5.3	7.6	8.8	5.6		7.0	
UI by Severity	Catastrophe	0	0	0	0	0	0	0	0	0	0	0	0	0	0	
	High	39	53	34	35	32	69	27	22	22	37	42	20	36	432	
	Medium	103	113	103	76	92	108	73	79	65	84	100	31	86	1027	
	Low	96	74	62	86	71	97	120	130	115	101	112	103	97	1167	
Physical Assaults by Severity	High	10	28	13	14	9	29	10	5	4	9	20	7	13	158	
	Medium	21	26	30	20	17	23	21	12	19	25	36	11	22	261	
	Low	28	18	15	24	22	25	18	31	22	28	18	28	23	277	
Total Patients who Fell		34	23	33	25	16	29	25	30	32	22	24	25	27	318	
Patient Fall Rate		4.01	2.67	4.26	2.99	1.98	3.47	3.15	3.64	3.79	2.71	2.84	3.02		3.21	
Total Staff who Fell		3	1	3	4	2	5	3	1	2	2	4	0	3	30	
Total Patients Injured***		24	31	22	24	19	29	17	26	20	32	34	13	24	291	
Patients with Major Injuries***		0	0	1	1	1	3	1	1	3	3	1	3	2	18	
Patient Injury Rate***		0.00	0.00	0.13	0.12	0.12	0.36	0.13	0.12	0.36	0.37	0.12	0.36		0.18	0.38
Total Staff Injured**		23	17	11	13	13	32	12	8	10	10	23	10	15		
Total ULs Documented in Avatar		0	0	0	0	0	1	1	1	0	0	0	0	0	3	
Elopement Rate		0.00	0.00	0.00	0.00	0.00	0.12	0.13	0.12	0.00	0.00	0.00	0.00		0.03	0.13
Med Variance (MV) Reports**		7	10	43	88	18	18	12	17	12	7	38	24	25	294	
MV Rate		0.83	1.16	5.56	10.54	2.22	2.16	1.51	2.06	1.42	0.86	4.50	2.90		2.97	
Adverse Drug Reactions Reports		3	4	1	4	2	3	3	2	3	1	0	3	2	29	
ADR Rate		0.35	0.46	0.13	0.48	0.25	0.36	0.38	0.24	0.36	0.12	0.00	0.36		0.29	
Total Med Administrations Scheduled		#####	#####	96178	103742	99674	101673	98847	101726	104695	99956	105811	102613		1232118	
Total Missing Documentations		622	939	838	579	543	626	923	777	522	423	500	336		7628	
Percent of Missing Documentation		0.58%	0.86%	0.87%	0.56%	0.54%	0.62%	0.93%	0.76%	0.50%	0.42%	0.47%	0.33%		0.62%	
Total Medication Doses Refused		7676	8164	6940	7145	6562	7352	5856	5977	6463	5572	7303	7635		82645	
Percent of Medication Refusal		7.14%	7.45%	7.22%	6.89%	6.58%	7.23%	5.92%	5.88%	6.17%	5.57%	6.90%	7.44%		6.71%	
Total STAT Orders		139	220	135	104	144	252	159	141	138	182	251	112	165		Figure 22
Total STAT Events****		74	98	68	52	73	116	68	66	62	83	119	53	78		
Total Individuals Involved >=1 STAT		33	40	31	32	29	42	33	31	34	38	49	31	35		
Total Patients with >=3 STAT Events		8	7	8	3	13	15	7	7	7	11	15	2	9		

* National Public Rate, NASMHPD Research Institute, National Research Institute (NRI), Data as of June 2013, Published in November 2013.

** Numbers may change if any additional UI report is made after the data run date from UI database (around the 15th of the following month); According to the revised UI policy as of November 4, 2013, a medication variance (MV) incident became no longer considered to be an unusual incident, and a medication or vital sign refusal incident is not longer an UI as of May 2014. UI data for the past 12 months in this report has been updated to reflect this change and reanalyzed in order to show the UI trend in consistent logic.

*** Injury is broadly defined to include any type of injuries regardless of the cause or severity level. The total number of patients injured represents all of the reported injuries including minor injuries treated with first aid alone. However, the patient injury rate considers only the number of patient injuries that required beyond first-aid level treatment based on the NRI definition and the patient injury rate is the number of 'major' patient injuries per every 1000 inpatient days

**** One STAT event may involve more than one STAT order for the same patient. Any orders placed within 20 minute timeframe are considered to belong to one STAT event.

Performance Related Information for Staff & Managers

4. Restraint & Seclusion

Data Source: Restraint/Seclusion Log and UI DB (for # of total events and patients) and Avatar (for patient days/hours)

Updated as of 12/15/15

Category		Dec-14	Jan-15	Feb-15	Mar-15	Apr-15	May-15	Jun-15	Jul-15	Aug-15	Sep-15	Oct-15	Nov-15	Monthly Average	Total (12mths)	NPR* (Jun-13)
Number of Restraint Events	Mechanical	9	9	4	1	6	16	5	15	1	3	8	1	6.5	78	
	Physical Hold					42	61	35	26	27	38	67	21	39.6		
	Total					48	77	40	41	28	41	75	22	46.5		
Number of Unique Patients Restrained	Mechanical	4	2	4	1	3	7	5	4	1	2	6	1	3.3		
	Physical Hold					20	25	20	17	17	22	28	16	20.6		
	Total					23	32	25	21	18	24	34	17	24.3		
Percentage of Patients Restrained**	Mechanical	1.3%	0.6%	1.3%	0.3%	1.0%	2.2%	1.6%	1.3%	0.3%	0.7%	1.9%	0.3%	1.1%		
	Physical Hold					6.5%	8.0%	6.6%	5.6%	5.5%	7.3%	9.0%	5.3%	6.7%		
	Total					7.5%	10.2%	8.2%	6.9%	5.8%	7.9%	10.9%	5.6%	7.9%		5.8%
Total Restraint Hours (h:mm)**	Mechanical	21:26	14:56	2:46	0:50	5:19	18:37	13:22	31:37	0:05	2:45	10:29	8:21	10:52	130:33	
	Physical Hold					0:42	1:01	0:47	0:37	1:36	3:22	6:35	1:42	2:02	6 mths	
	Total					6:01	19:38	14:09	32:14	1:41	6:07	17:04	10:03	13:22	6 mths	
Restraint Hours Rate**	Mechanical	0.105	0.072	0.015	0.004	0.027	0.093	0.070	0.160	0.000	0.014	0.052	0.042	0.055	12 mths	
	Physical Hold					0.004	0.005	0.004	0.003	0.008	0.017	0.033	0.009	0.010	6 mths	
	Total					0.031	0.098	0.074	0.163	0.008	0.031	0.084	0.051	0.068	6 mths	0.71
Number of Seclusion Events		12	15	20	15	15	20	21	14	18	37	40	13	20.0	240	
Number of Unique Patients Secluded		8	10	12	9	9	11	10	6	15	13	16	12	10.9		
Percentage of Patients Secluded		2.5%	3.1%	3.8%	2.8%	2.9%	3.5%	3.3%	2.0%	4.8%	4.3%	5.1%	4.0%	3.5%		2.4%
Total Seclusion Hours (h:mm)		8:18	9:24	16:21	20:15	8:24	12:02	28:28	13:18	12:36	50:35	56:52	8:33	20:25	245:06	
Seclusion Hours Rate		0.041	0.045	0.088	0.101	0.043	0.060	0.150	0.067	0.062	0.260	0.281	0.043		0.103	0.44

* National Public Rate, NASMHPD Research Institute, National Research Institute (NRI), Data as of June 2013, Published in November 2013.

** Restraint data prior to April 2015 includes only mechanical restraints. The Hospital's restraint policy has been revised to consider a physical hold a restraint and data as of April 2015 reflects this change. The duration of each physical hold event is counted as one (1) minute as a physical hold is ordered/used only as a temporary intervention that lasts less than a minute to break up any physical altercations or to administer emergency medications.

Performance Related Information for Staff & Managers

6. Major Unusual Incidents by Incident Location/Unit

Data Source: UI DB

Updated as of 12/15/15

Category		Dec-14	Jan-15	Feb-15	Mar-15	Apr-15	May-15	Jun-15	Jul-15	Aug-15	Sep-15	Oct-15	Nov-15	Monthly Average	Total (12mths)	Percent
Total Unusual Incidents		238	240	198	197	195	274	220	231	202	222	254	154	219	2625	100%
Incident Location	1A	9	5	5	12	13	16	18	8	8	16	6	6	10	122	5%
	1B	12	12	10	13	18	8	7	15	21	19	18	21	15	174	7%
	1C	24	28	25	7	7	33	22	8	19	12	15	12	18	212	8%
	1D	40	37	15	23	27	29	18	37	17	22	24	11	25	300	11%
	1E	26	15	12	12	25	37	14	27	15	29	21	9	20	242	9%
	1F	34	43	28	28	20	46	28	18	17	30	46	16	30	354	13%
	1G	7	11	12	7	16	12	14	21	21	12	17	13	14	163	6%
	2A	7	16	3	6	5	7	5	14	4	14	11	0	8	92	4%
	2B	2	2	3	4	4	5	3	5	3	4	1	4	3	40	2%
	2C	16	14	24	10	2	9	20	24	14	15	35	17	17	200	8%
	2D	22	19	19	33	24	22	24	23	23	14	27	16	22	266	10%
	TLC	23	21	31	27	16	25	32	14	18	17	26	24	23	274	10%
	Other	16	17	11	15	18	25	15	17	22	18	7	5	16	186	7%
Physical Assault		59	72	58	58	48	77	49	48	45	62	74	46	58	696	100%
Incident Location	1A	0	1	2	4	2	3	4	3	1	2	0	2	2	24	3%
	1B	3	0	1	0	1	0	0	0	3	1	1	5	1	15	2%
	1C	8	6	6	2	1	15	4	2	8	4	4	5	5	65	9%
	1D	5	10	4	7	7	6	3	9	2	6	9	3	6	71	10%
	1E	3	5	4	8	6	6	5	6	4	10	4	2	5	63	9%
	1F	19	15	13	10	8	20	14	8	4	17	28	5	13	161	23%
	1G	2	4	5	1	4	1	6	5	7	6	4	1	4	46	7%
	2A	2	5	1	0	1	0	0	1	0	2	1	0	1	13	2%
	2B	0	0	0	0	0	0	0	0	0	0	0	0	0	0	0%
	2C	5	7	10	4	0	3	3	6	3	4	11	9	5	65	9%
	2D	6	7	4	12	12	8	4	6	10	4	7	5	7	85	12%
	TLC - Intensive	4	8	6	9	2	7	5	2	3	2	5	7	5	60	9%
	TLC - Transitional	1	3	1	1	3	2	0	0	0	2	0	2	1	15	2%
	Other	1	1	1	0	1	6	1	0	0	2	0	0	1	13	2%

Performance Related Information for Staff & Managers

6. Major Unusual Incidents by Incident Location/Unit

Data Source: UI DB

Updated as of 12/15/15

Category		Dec-14	Jan-15	Feb-15	Mar-15	Apr-15	May-15	Jun-15	Jul-15	Aug-15	Sep-15	Oct-15	Nov-15	Monthly Average	Total (12mths)	Percent
Aggressive Behavior		78	73	63	46	59	93	61	83	75	83	102	51	72	867	125%
Incident Location	1A	3	0	0	0	1	0	2	1	1	1	4	1	1	14	2%
	1B	1	0	0	1	3	0	0	2	9	7	2	5	3	30	4%
	1C	7	10	12	2	2	9	9	3	7	3	4	5	6	73	10%
	1D	23	21	8	7	14	15	11	14	6	11	10	4	12	144	21%
	1E	13	7	5	1	12	21	5	11	6	14	15	4	10	114	16%
	1F	12	15	10	7	7	19	6	5	4	9	11	4	9	109	16%
	1G	0	0	2	1	6	8	3	10	11	3	8	6	5	58	8%
	2A	1	6	2	2	1	3	2	11	3	10	7	0	4	48	7%
	2B	0	0	0	0	0	0	0	1	0	0	0	0	0	1	0%
	2C	4	1	5	3	0	2	7	6	5	6	17	2	5	58	8%
	2D	8	5	7	11	6	6	5	12	10	8	15	7	8	100	14%
	TLC - Intensive	3	4	8	6	4	4	6	1	3	4	5	8	5	56	8%
	TLC - Transitional	1	3	2	2	3	5	4	4	3	4	2	5	3	38	5%
	Other	2	1	2	3	0	1	1	2	7	3	2	0	2	24	3%
Psych Emergency		72	89	72	48	64	96	25	39	28	59	55	22	56	669	96%
Incident Location	1A	3	1	1	0	1	0	0	1	0	0	1	0	1	8	1%
	1B	1	0	0	0	3	0	0	2	5	4	3	1	2	19	3%
	1C	4	8	7	4	1	19	2	4	2	2	2	2	5	57	8%
	1D	14	16	11	10	15	16	5	9	3	9	12	7	11	127	18%
	1E	15	11	7	5	18	20	5	7	3	15	7	1	10	114	16%
	1F	19	22	15	15	10	26	9	3	3	14	13	3	13	152	22%
	1G	0	1	2	1	4	2	1	5	3	3	2	2	2	26	4%
	2A	1	4	1	0	2	3	1	4	1	5	5	0	2	27	4%
	2B	0	0	0	0	0	0	0	0	0	0	0	0	0	0	0%
	2C	1	4	7	1	0	0	0	0	2	3	5	2	2	25	4%
	2D	13	14	9	3	7	3	2	1	2	1	2	2	5	59	8%
	TLC - Intensive	1	5	10	6	1	1	0	2	1	1	2	1	3	31	4%
	TLC - Transitional	0	3	0	1	2	4	0	1	1	0	1	1	1	14	2%
	Other	0	0	2	2	0	2	0	0	2	2	0	0	1	10	1%

Performance Related Information for Staff & Managers

6. Major Unusual Incidents by Incident Location/Unit

Data Source: UI DB

Updated as of 12/15/15

Category		Dec-14	Jan-15	Feb-15	Mar-15	Apr-15	May-15	Jun-15	Jul-15	Aug-15	Sep-15	Oct-15	Nov-15	Monthly Average	Total (12mths)	Percent
Fall		35	27	33	27	18	32	28	31	33	23	25	25	28	337	100%
Incident Location	1A	3	3	2	5	0	8	8	3	3	9	1	2	4	47	14%
	1B	4	3	6	3	2	2	5	9	8	7	5	8	5	62	18%
	1C	8	2	0	3	1	2	0	0	0	1	1	1	2	19	6%
	1D	1	1	0	2	4	1	0	1	2	0	2	0	1	14	4%
	1E	1	0	2	0	0	1	2	2	3	1	2	2	1	16	5%
	1F	2	7	4	3	1	2	1	6	2	0	3	1	3	32	9%
	1G	1	2	4	1	1	2	4	1	4	0	1	2	2	23	7%
	2A	2	0	0	1	1	2	0	2	0	1	1	0	1	10	3%
	2B	0	0	1	1	2	2	1	1	3	0	0	1	1	12	4%
	2C	5	3	5	0	0	0	1	1	0	1	5	4	2	25	7%
	2D	1	1	3	3	2	3	3	1	2	1	0	0	2	20	6%
	TLC - Intensive	1	2	1	1	1	4	1	1	2	0	4	3	2	21	6%
	TLC - Transitional	3	0	1	0	0	0	0	1	1	0	0	1	1	7	2%
	Other	3	3	4	4	3	3	2	2	3	2	0	0	2	29	9%
Physical Injury		37	41	32	35	32	50	24	36	31	39	45	23	35	425	100%
Incident Location	1A	0	2	2	2	2	3	1	2	0	1	0	1	1	16	4%
	1B	1	0	1	4	5	2	0	0	3	3	1	2	2	22	5%
	1C	3	5	4	3	0	11	2	2	8	7	3	0	4	48	11%
	1D	7	4	1	7	5	6	3	6	4	4	9	3	5	59	14%
	1E	1	0	2	1	2	5	3	2	3	3	1	1	2	24	6%
	1F	8	5	8	7	3	8	6	5	3	9	17	5	7	84	20%
	1G	2	3	1	0	1	0	1	2	2	3	3	1	2	19	4%
	2A	2	0	1	0	2	1	0	1	0	1	1	0	1	9	2%
	2B	0	0	0	0	1	1	1	1	1	2	0	1	1	8	2%
	2C	4	6	6	1	0	1	2	3	0	3	5	4	3	35	8%
	2D	5	5	1	1	4	3	3	3	3	1	3	0	3	32	8%
	TLC - Intensive	1	7	1	5	2	4	1	5	0	1	2	4	3	33	8%
	TLC - Transitional	2	1	2	0	0	2	0	0	0	0	0	0	1	7	2%
	Other	1	3	2	4	5	3	1	4	4	1	0	1	2	29	7%

* Not every incident is a major incident. This counts only those incidents that were classified to be major based on the policy.

Performance Related Information for Staff & Managers

5. Demographic Information of Individuals in Care

Data Source: Avatar

Updated as of 12/15/15

Category	Sub-group	Dec-14	Jan-15	Feb-15	Mar-15	Apr-15	May-15	Jun-15	Jul-15	Aug-15	Sep-15	Oct-15	Nov-15	Monthly Average	Percent*
Total Active (on Roll) at End of Month*		283	284	281	278	273	274	266	274	278	272	275	282	277	
Gender	Female	93	90	89	87	90	87	81	85	85	81	85	88	87	31.4%
	Male	190	194	192	191	183	187	185	189	193	191	190	194	190	68.6%
Age	Median Age (Years)	55 yrs	55 yrs	56 yrs	56 yrs	55 yrs	56 yrs	55 yrs	55 yrs	55 yrs	56 yrs	56 yrs	56 yrs	56 yrs	Figure 24
	<30 years old	28	30	37	38	43	40	38	36	44	40	40	40	38	13.7%
	>=30 and <40 years old	34	34	31	29	28	29	32	39	32	31	31	35	32	11.6%
	>=40 and <50 years old	36	35	32	32	32	34	33	33	26	22	29	31	31	11.3%
	>=50 and <60 years old	81	79	71	69	67	63	61	63	72	68	62	63	68	24.7%
	>=60 years old	104	106	110	110	103	108	102	103	104	111	113	113	107	38.8%
Legal Status of Individuals on Roll at End of Month	Emergency	29	27	27	38	45	38	32	32	25	25	24	23	30	11.0%
	Inpatient Commitment	35	36	36	33	35	34	34	33	33	32	28	30	33	12.0%
	Outpatient Commitment	27	27	28	17	16	21	22	22	28	25	27	30	24	8.7%
	Voluntary	32	37	34	38	35	37	36	37	37	37	40	41	37	13.3%
	Non-Protesting	0	1	1	0	0	0	0	0	0	0	0	0	0	0.1%
	Civil Sub-total	123	128	126	126	131	130	124	124	123	119	119	124	125	45.1%
	DC Exam	43	40	41	38	38	39	30	35	36	39	43	46	39	14.1%
	Mentally Incompetent	28	25	23	25	20	20	30	32	36	32	31	29	28	10.0%
	Forensic Pre-trial Sub-total	71	65	64	63	58	59	60	67	72	71	74	75	67	24.1%
	NGBRI - DC	75	76	76	74	70	72	69	70	71	70	70	71	72	26.0%
	NGBRI - US	10	10	10	10	9	9	9	9	8	8	8	8	9	3.3%
	NGBRI - VI	1	1	1	1	1	1	1	1	1	1	1	1	1	0.4%
	Dual Commitment	1	1	1	1	1	0	0	0	0	0	0	0	0	0.2%
Sexual Psychopath (Miller Act)	2	3	3	3	3	3	3	3	3	3	3	3	3	1.1%	
Forensic Post-trial Sub-total	89	91	91	89	84	85	82	83	83	82	82	83	85	30.8%	
Length of Stay	<30 Days	38	40	37	35	31	39	33	37	36	22	35	26	34	12.3%
	>=30 ~ <365 Days	104	99	100	101	101	93	91	92	95	101	90	103	98	35.2%
	>= 1 Year & < 2 Years	25	27	24	24	26	27	29	31	33	34	33	36	29	10.5%
	>= 2 Years & < 5 Years	29	30	32	32	31	32	30	29	30	31	33	33	31	11.2%
	>= 5 Years & < 20 Years	46	46	47	45	46	45	46	48	48	48	48	48	47	16.9%
	>= 20 Years	41	42	41	41	38	38	37	37	36	36	36	36	38	13.8%
	Median LOS (Days)	362 d	381 d	402 d	403 d	388 d	414 d	448 d	445 d	436 d	466 d	465 d	462 d	423 d	Figure 25
	Median LOS - Civil	377 d	379 d	402 d	403 d	378 d	384 d	439 d	470 d	501 d	540 d	571 d	567 d	451 d	
	Median LOS - Pre-trial	55 d	46 d	46 d	57 d	77 d	54 d	49 d	53 d	59 d	78 d	63 d	69 d	59 d	
	Median LOS - Post-trial	5110 d	3987 d	3987 d	4018 d	4062 d	4079 d	4123 d	4140 d	3988 d	4110 d	4141 d	4079 d	4152 d	
	Average LOS (Days)	2488 d	2500 d	2490 d	2483 d	2421 d	2424 d	2451 d	2400 d	2333 d	2400 d	2391 d	2356 d	2428 d	
Average LOS - Civil	1716 d	1688 d	1709 d	1661 d	1513 d	1532 d	1547 d	1567 d	1604 d	1666 d	1686 d	1648 d	1628 d		
Average LOS - Pre-trial	118 d	89 d	93 d	101 d	123 d	120 d	115 d	110 d	115 d	126 d	123 d	130 d	114 d		
Average LOS - Post-trial	5447 d	5380 d	5275 d	5332 d	5425 d	5387 d	5528 d	5493 d	5339 d	5433 d	5461 d	5425 d	5410 d		

* Counts the total number of individuals who are on the hospital roll at end of each month. This number serves as denominator to calculate percentage of each group.

Performance Related Information for Staff & Managers

6. Demographic Information of Individuals in Care

Data Source: Avatar

Updated as of 12/15/15

Category	Sub-group	Dec-14	Jan-15	Feb-15	Mar-15	Apr-15	May-15	Jun-15	Jul-15	Aug-15	Sep-15	Oct-15	Nov-15	Monthly Average	Percent*	
Total Active (on Roll) at End of Month*		283	284	281	278	273	274	266	274	278	272	275	282	277		
Gender	Female	33%	32%	32%	31%	33%	32%	30%	31%	31%	30%	31%	31%	31%		
	Male	67%	68%	68%	69%	67%	68%	70%	69%	69%	70%	69%	69%	69%		
Age	Median Age (Years)	55 yrs	55 yrs	56 yrs	56 yrs	55 yrs	56 yrs	55 yrs	55 yrs	55 yrs	56 yrs	56 yrs	56 yrs	56 yrs		
	<30 yrs	10%	11%	13%	14%	16%	15%	14%	13%	16%	15%	15%	14%	14%		
	>=30 and <40 yrs	12%	12%	11%	10%	10%	11%	12%	14%	12%	11%	11%	12%	12%		
	>=40 and <50 yrs	13%	12%	11%	12%	12%	12%	12%	12%	9%	8%	11%	11%	11%		
	>=50 and <60 yrs	29%	28%	25%	25%	25%	23%	23%	23%	26%	25%	23%	22%	25%		
	>=60 yrs	37%	37%	39%	40%	38%	39%	38%	38%	37%	41%	41%	40%	39%		
Legal Status of Individuals on Roll at End of Month	Emergency	10%	10%	10%	14%	16%	14%	12%	12%	9%	9%	9%	8%	11%		
	Inpatient Commitment	12%	13%	13%	12%	13%	12%	13%	12%	12%	12%	12%	10%	11%	12%	
	Outpatient Commitment	10%	10%	10%	6%	6%	8%	8%	8%	10%	9%	10%	11%	9%		
	Voluntary	11%	13%	12%	14%	13%	14%	14%	14%	13%	14%	15%	15%	13%		
	Non-Prototyping	0%	0%	0%	0%	0%	0%	0%	0%	0%	0%	0%	0.0%	0%		
	Civil Sub-total	43%	45%	45%	45%	48%	47%	47%	45%	44%	44%	43%	44%	45%		
	DC Exam	15%	14%	15%	14%	14%	14%	11%	13%	13%	14%	16%	16%	14%		
	Mentally Incompetent	10%	9%	8%	9%	7%	7%	11%	12%	13%	12%	11%	10%	10%		
	Forensic Pre-trial Sub-total	25%	23%	23%	23%	21%	22%	23%	24%	26%	26%	27%	27%	24%		
	NGBRI - DC	27%	27%	27%	27%	26%	26%	26%	26%	26%	26%	25%	25%	26%		
	NGBRI - US	4%	4%	4%	4%	3%	3%	3%	3%	3%	3%	3%	3%	3%		
	NGBRI - VI	0%	0%	0%	0%	0%	0%	0%	0%	0%	0%	0%	0%	0%		
	Dual Commitment	0%	0%	0%	0%	0%	0%	0%	0%	0%	0%	0%	0%	0%		
Sexual Psychopath (Miller Ac	1%	1%	1%	1%	1%	1%	1%	1%	1%	1%	1%	1%	1%			
Forensic Post-trial Sub-total	31%	32%	32%	32%	31%	31%	31%	30%	30%	30%	30%	30%	29%	31%		
Length of Stay	Median LOS (Days)	362 d	381 d	402 d	403 d	388 d	414 d	448 d	445 d	436 d	466 d	465 d	462 d	423 d		
	Average LOS (Days)	2488 d	2500 d	2490 d	2483 d	2421 d	2424 d	2451 d	2400 d	2333 d	2400 d	2391 d	2356 d	2428 d		
	<30 days	13%	14%	13%	13%	11%	14%	12%	14%	13%	8%	13%	9%	12%		
	>=30 days & <365 days	37%	35%	36%	36%	37%	34%	34%	34%	34%	37%	33%	37%	35%		
	>= 1 year & < 2 years	9%	10%	9%	9%	10%	10%	11%	11%	12%	13%	12%	13%	11%		
	>= 2 years & < 5 years	10%	11%	11%	12%	11%	12%	11%	11%	11%	11%	12%	12%	11%		
	>= 5 years & < 20 years	16%	16%	17%	16%	17%	16%	17%	18%	17%	18%	17%	17%	17%		
>= 20 years	14%	15%	15%	15%	14%	14%	14%	14%	13%	13%	13%	13%	14%			

* Counts the total number of individuals who are on the hospital roll at end of each month. This number serves as denominator to calculate percentage of each group.