

**Government of the District of Columbia
Department of Behavioral Health (DBH)**

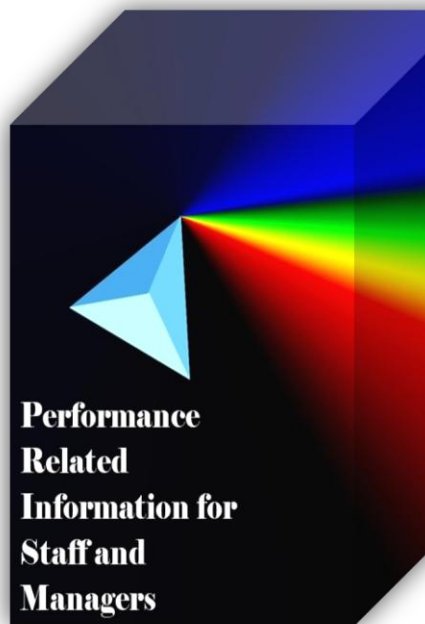


Performance Related Information for Staff and Managers

PRISM

NOVEMBER 2013

Table of Contents



1.	Admissions to SEH	1
2.	Discharges from SEH.....	1
3.	Net Increase/Decrease by Legal Status for the Past 12 Months	1
4.	Average Daily Census	2
5.	Transfers	2
6.	30-Day Readmission Rate	2
7.	Unusual Incidents.....	3
8.	Patient-Involved Unusual Incidents.....	3
9.	Unusual Incidents by Severity	4
10.	Selected Types of Incidents	4
11.	Physical Assaults by Severity	5
12.	Patient Injuries.....	5
13.	Staff Injuries	5
14.	Percent of Patients Restrained or Secluded.....	6
15.	Restraint Hours Rate & Seclusion Hours Rate	6
16.	Elolements	6
17.	Reported Medication Variance Events	7
18.	Reported Adverse Drug Reactions	7
19.	Percent of Missing Documentation on Med-Administration.....	8
20.	Number of STAT Events and Individuals Involved	8
21.	Demographics and Length of Stay	9
	<input type="checkbox"/> Appendix 1) Table – Census, Admissions & Discharges	
	<input type="checkbox"/> Appendix 2) Table – Key Performance Indicators	
	<input type="checkbox"/> Appendix 3) Table – Unusual Incident & Medication	
	<input type="checkbox"/> Appendix 4) Table – Restraint & Seclusion	
	<input type="checkbox"/> Appendix 5) Table – Demographic Information of Individuals in Care	

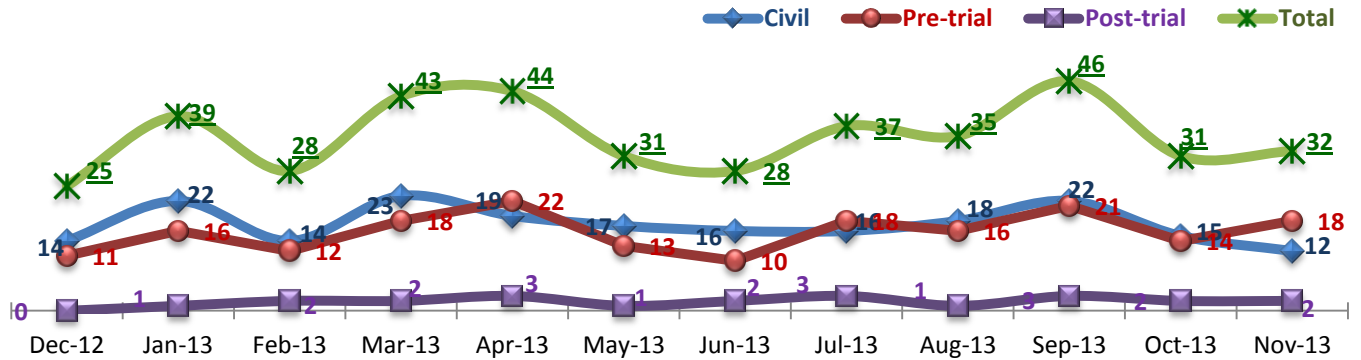
12/19/2013

Office of Statistics and Reporting (OSR)

Key Trends: Admission, Discharge, Transfer, Census, and Readmissions (1~6)

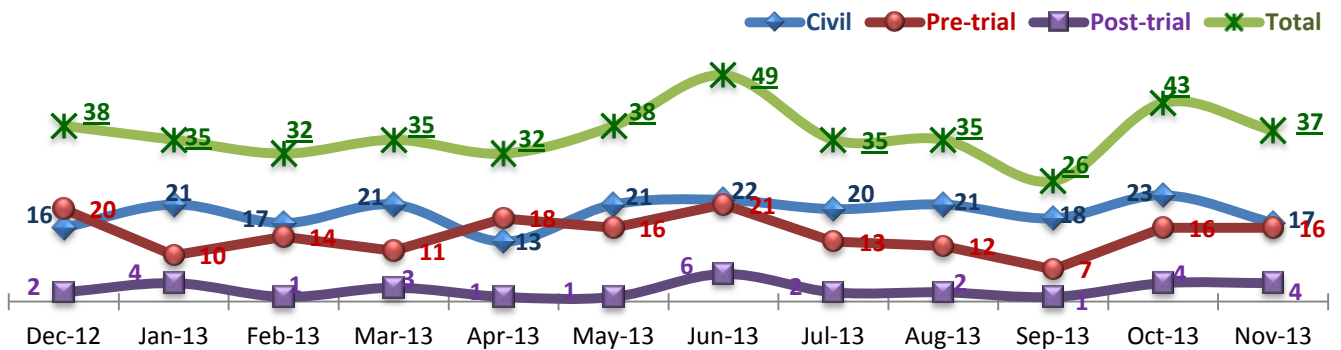
- In November 2013, admissions, particularly forensic pre-trial admissions, slightly increased while discharges declined. Despite that, the total number of discharges still exceeded that of admissions, lowering the average daily census from 266 in October to 260 in November.
- For the past 12 months, we had 15 more admissions than discharges for forensic pre-trial population while discharges exceeded admissions for civil and forensic post-trial population by 22 and 9, respectively.
- The 30-day readmission rate for the past 5 months remained below the NPR (6.8%)¹.

1. Admissions to SEH



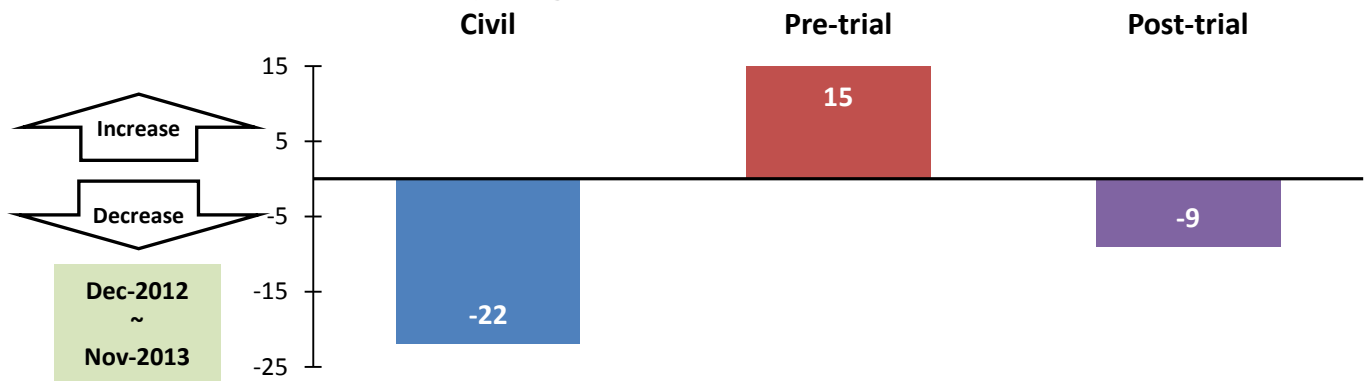
* Number of admissions to SEH inpatient program, including transfers from outpatient to inpatient program.

2. Discharges from SEH



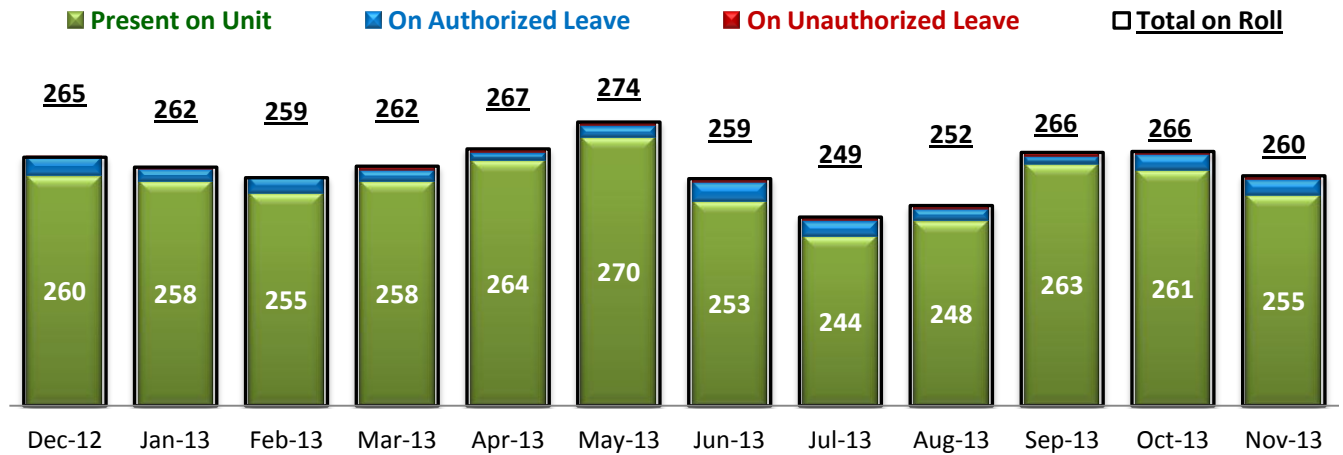
* Number of discharges from SEH inpatient program, including transfers from inpatient to outpatient program.

3. Net Increase/Decrease by Legal Status for the Past 12 Months



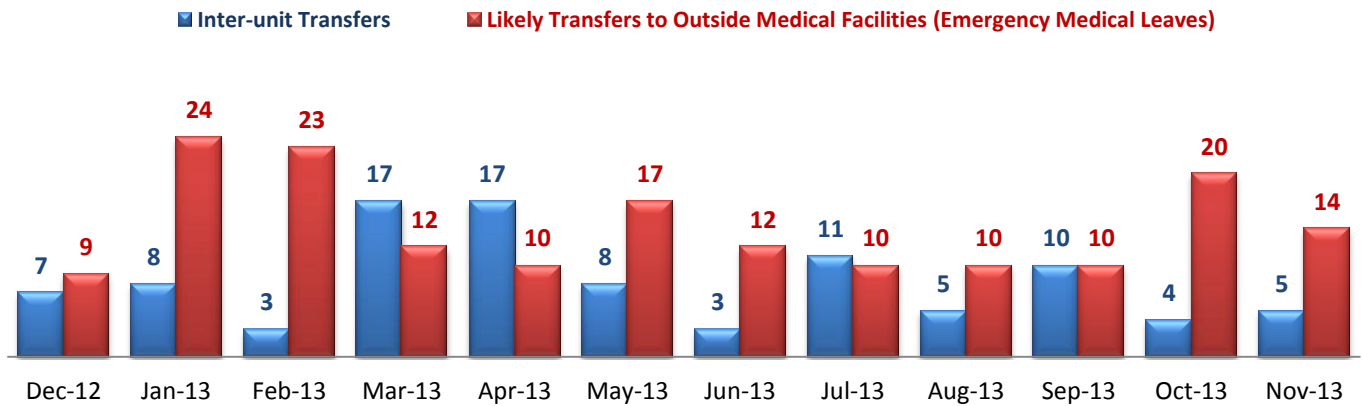
¹ NPR: National Public Rate as of Jun 2012 was published in January 2013 by National Association of State Mental Health Program Directors Research Institute (NRI), based on data collected from a number of state psychiatric hospitals nationwide.

4. Average Daily Census



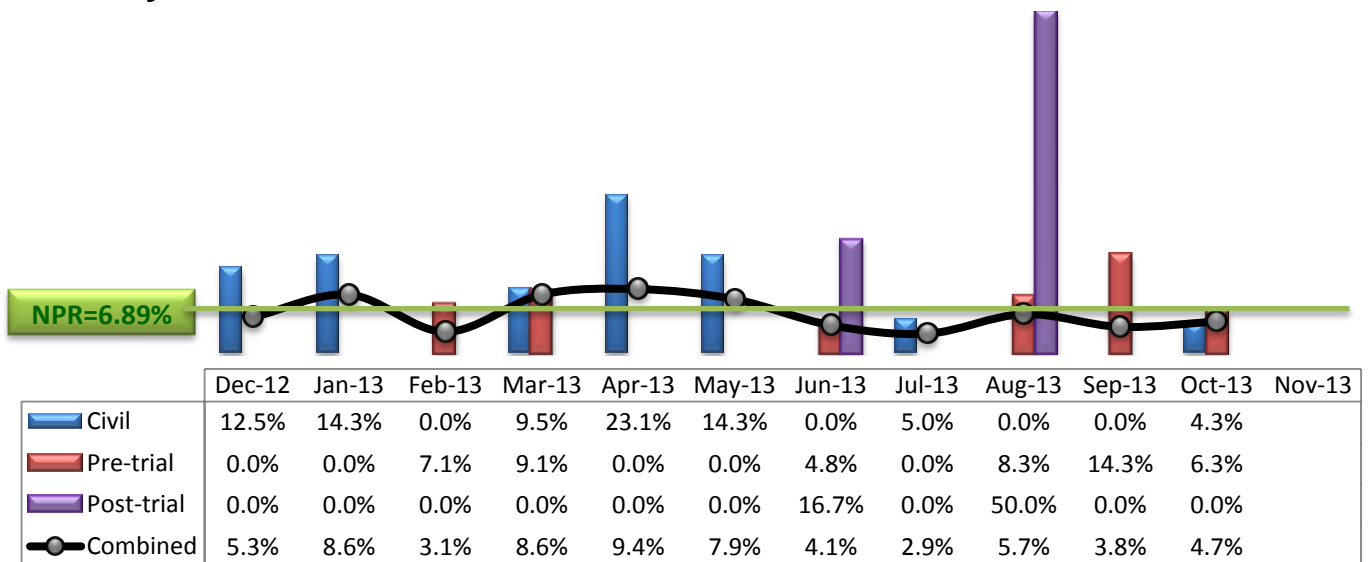
* Data above is the daily average number of individuals counted at 11:59 PM every day during each month.

5. Transfers



* Number of inter-unit transfers that occurred during month and number of emergency medical leaves that were initiated during month.

6. 30-Day Readmission Rate



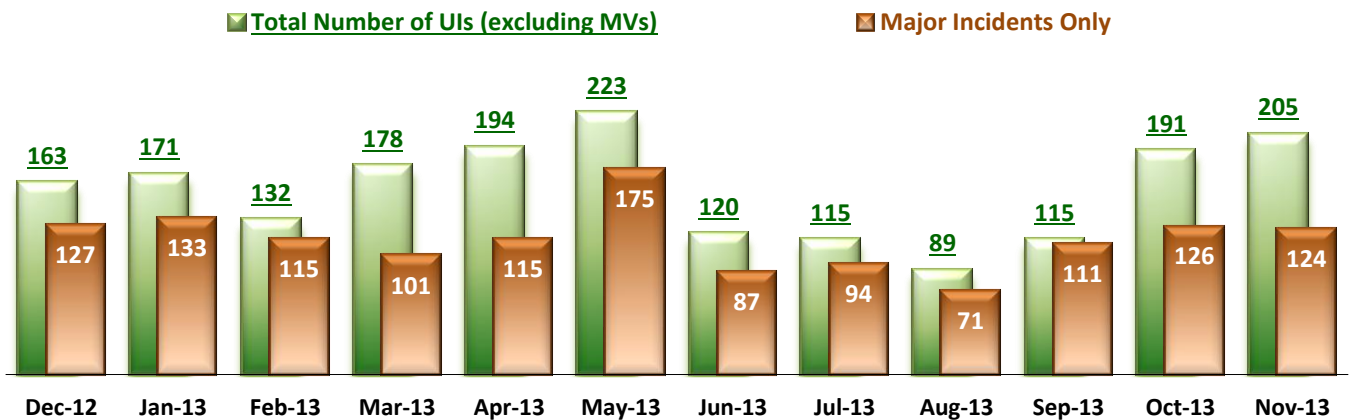
* Percent of discharges that returned to SEH within 30 days of discharges. It does not include those who may have been re-hospitalized at another psychiatric facility. This measure requires 30-day observation following discharge.

** The post-trial denominators (discharges) per month range only between one and six, making the monthly re-admission rate high when there is any. For example, in August 2013, there were two post trial discharges, of which one (50%) was readmitted within 30 days.

Key Trends: Unusual Incidents (7~16)

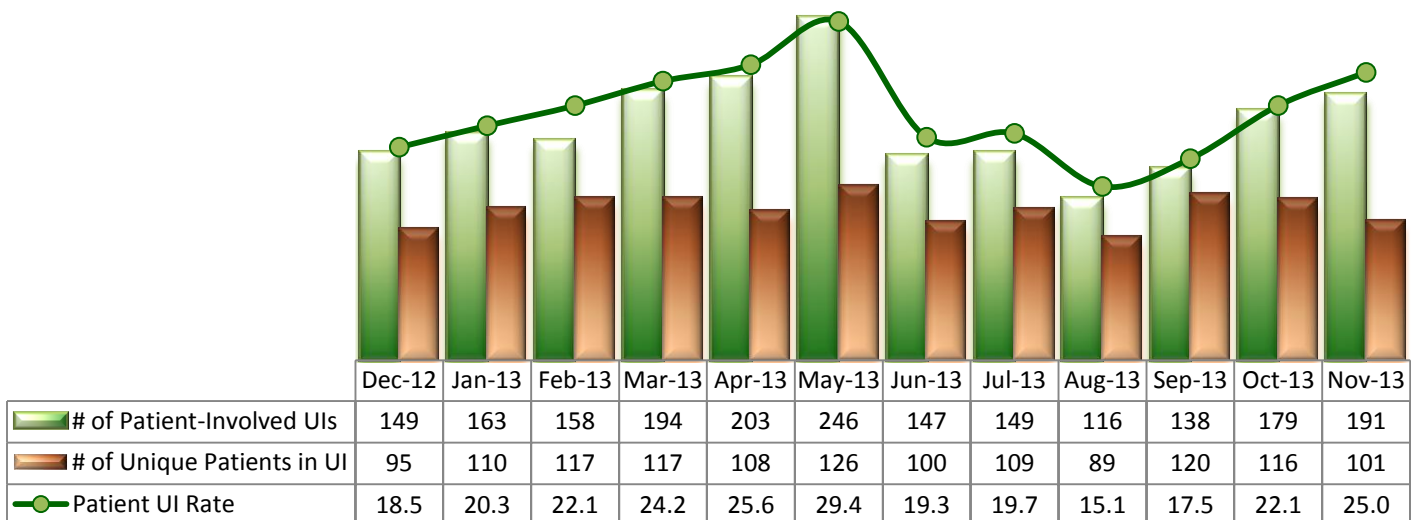
- Following a spike in number of admissions in September, the Hospital saw a noticeable increase of unusual incidents (UIs), particularly violence related incidents, in October (191) and November (205) – excluding medication variances². A similar pattern (an increase of violence following an increase in admissions) was seen in March through May.
- Since September, the number and rate of patient related UIs continued to increase but the number of unique individuals involved decreased, indicating a number of UIs for the past few months were repeatedly triggered by a small number of same individuals.
- The number of UIs at severe level steadily increased since September, reaching the highest level at 33 in November. Key UIs with major increase in November includes physical injuries (from 23 to 35), self-injurious behaviors (from 4 to 10), seclusion (from 4 to 11) and medication refusal (from 23 to 34).

7. Unusual Incidents



* Numbers above represent all types of the unusual incidents (UIs) that were reported to the Risk Manager by PRISM publication date, including those that did not involve any patients.

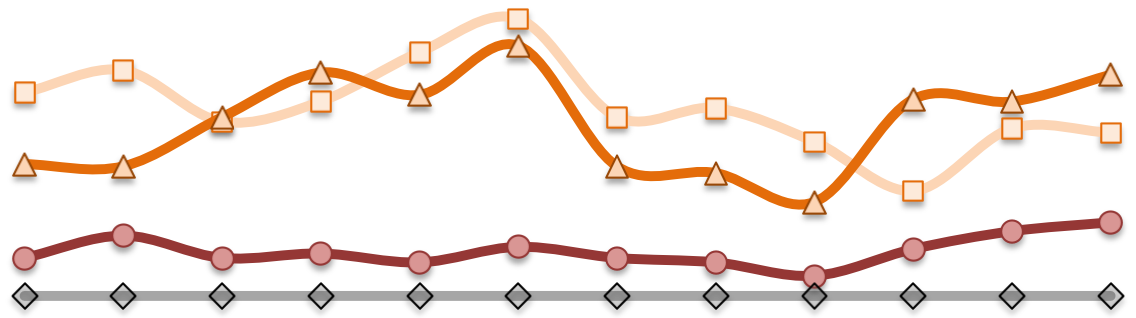
8. Patient-Involved Unusual Incidents



* The patient UI rate is the number of patient-involved unusual incidents reported for every 1000 inpatient days.

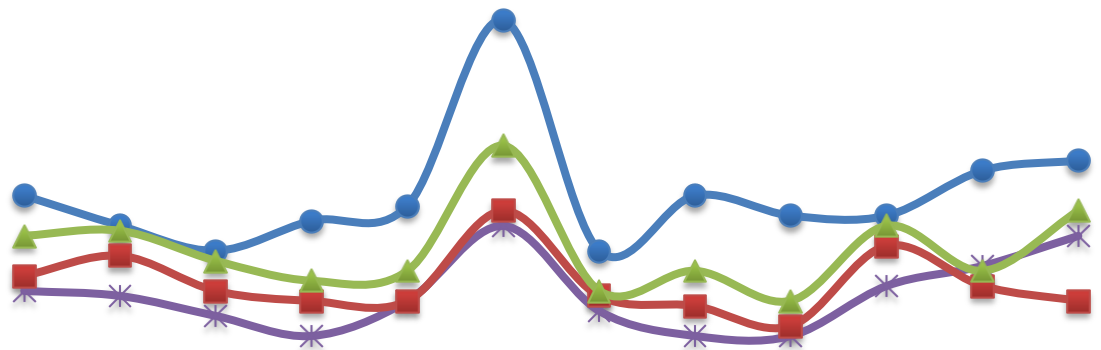
² According to the revised UI policy as of November 4, 2013, a medication variance (MV) incident is no longer considered to be an unusual incident. While the official number of UIs until October 2013 remains as including MVs, for PRISM publication, UI data for the past 12 months herein has been reanalyzed in order to show the UI trend in consistent logic.

9. Unusual Incidents by Severity



	Dec-12	Jan-13	Feb-13	Mar-13	Apr-13	May-13	Jun-13	Jul-13	Aug-13	Sep-13	Oct-13	Nov-13
1) Low	91	101	78	87	109	124	80	84	69	47	75	73
2) Medium	59	58	80	100	90	112	58	55	42	88	87	99
3) High	17	27	17	19	15	22	17	15	9	21	29	33
4) Catstrp	0	0	0	0	0	0	0	0	0	0	0	0
Total UI	167	186	175	206	214	258	155	154	120	156	191	205

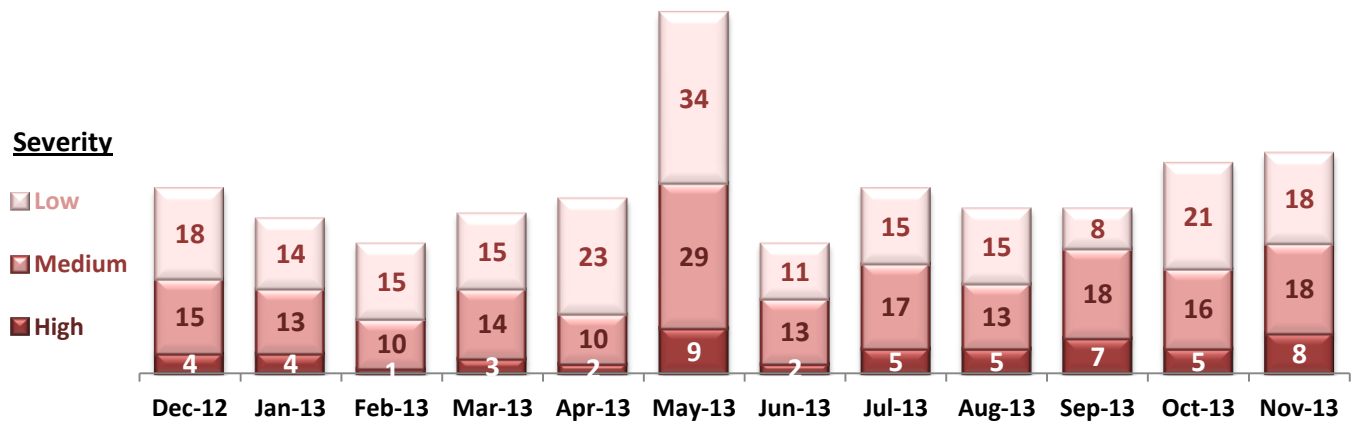
10. Selected Types of Incidents



	Dec-12	Jan-13	Feb-13	Mar-13	Apr-13	May-13	Jun-13	Jul-13	Aug-13	Sep-13	Oct-13	Nov-13
Physical Assault	37	31	26	32	35	72	26	37	33	33	42	44
Psych Emergency	18	17	13	9	16	31	14	9	9	19	23	29
Fall	21	25	18	16	16	34	17	15	11	27	19	16
Injury	29	30	24	20	22	47	18	22	16	31	22	34

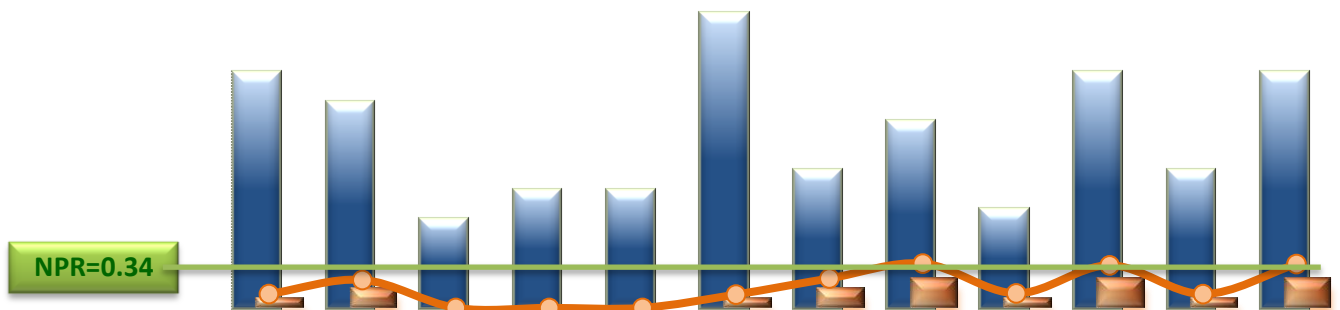
* These are incident types that are frequently reported. Some incidents may be counted in multiple categories. For example, a physical assault incident that accompanied psychiatric emergency and injury is counted under psychiatric emergency and injury as well as under physical assault. Injury is broadly defined to include any type of injuries regardless of the cause or severity level.

11. Physical Assaults by Severity



* Any physical assault that accompanies a code 13 or results in extensive injury needing off-unit treatment or transfer to ER is considered to be high severity, any physical assault that causes a minor injury that can be treated on unit is considered to be medium severity, and physical assault events that result in no injury are considered to be low severity.

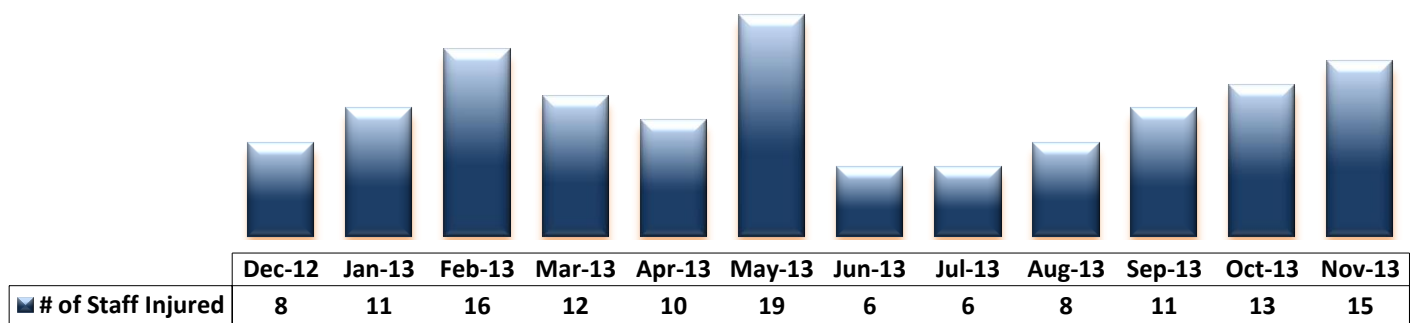
12. Patient Injuries



	Dec-12	Jan-13	Feb-13	Mar-13	Apr-13	May-13	Jun-13	Jul-13	Aug-13	Sep-13	Oct-13	Nov-13
Total Pts Injured	24	21	9	12	12	30	14	19	10	24	14	24
Major Pt Injuries*	1	2	0	0	0	1	2	3	1	3	1	3
Patient Injury Rate	0.12	0.25	0.00	0.00	0.00	0.12	0.26	0.40	0.13	0.38	0.12	0.39

* Injury is broadly defined to include any type of injuries regardless of the cause or severity level. The total number of patients injured represents all of the reported injuries including minor injuries treated with first aid alone. However, the patient injury rate considers only the number of patient injuries that required beyond first-aid level treatment based on the NRI definition and the patient injury rate is the number of 'major' patient injuries per every 1000 inpatient days

13. Staff Injuries



* Injury is broadly defined to include any type of injuries regardless of the cause or severity level. The total number of staff injured represents all of the reported staff injuries including minor injuries treated with first aid alone.

14. Percent of Patients Restrained or Secluded

NPR(R)=5.7%

NPR(S)=2.4%



	Dec-12	Jan-13	Feb-13	Mar-13	Apr-13	May-13	Jun-13	Jul-13	Aug-13	Sep-13	Oct-13	Nov-13
■ Restraint	0.3%	0.0%	0.0%	0.0%	0.0%	0.0%	0.0%	0.0%	0.0%	0.0%	0.3%	0.7%
■ Seclusion	0.7%	1.3%	0.7%	0.3%	1.9%	1.9%	1.0%	0.3%	1.1%	1.3%	1.3%	2.1%

* Percent of unique patients who were restrained at least once and percent of unique patients who were secluded at least once. The denominator includes all individuals who were served in care >=1 day during month.

15. Restraint Hours Rate & Seclusion Hours Rate

NPR(R)=0.65

NPR(S)=0.55



	Dec-12	Jan-13	Feb-13	Mar-13	Apr-13	May-13	Jun-13	Jul-13	Aug-13	Sep-13	Oct-13	Nov-13
■ Restraint	0.002	0.000	0.000	0.000	0.000	0.000	0.000	0.000	0.000	0.000	0.011	0.034
■ Seclusion	0.049	0.043	0.042	0.005	0.054	0.038	0.119	0.021	0.046	0.017	0.017	0.094

* Restraint/Seclusion Hours Rate: Number of hours spent in restraint/seclusion for every 1000 inpatient hours.

16. Elopements

NPR=0.12



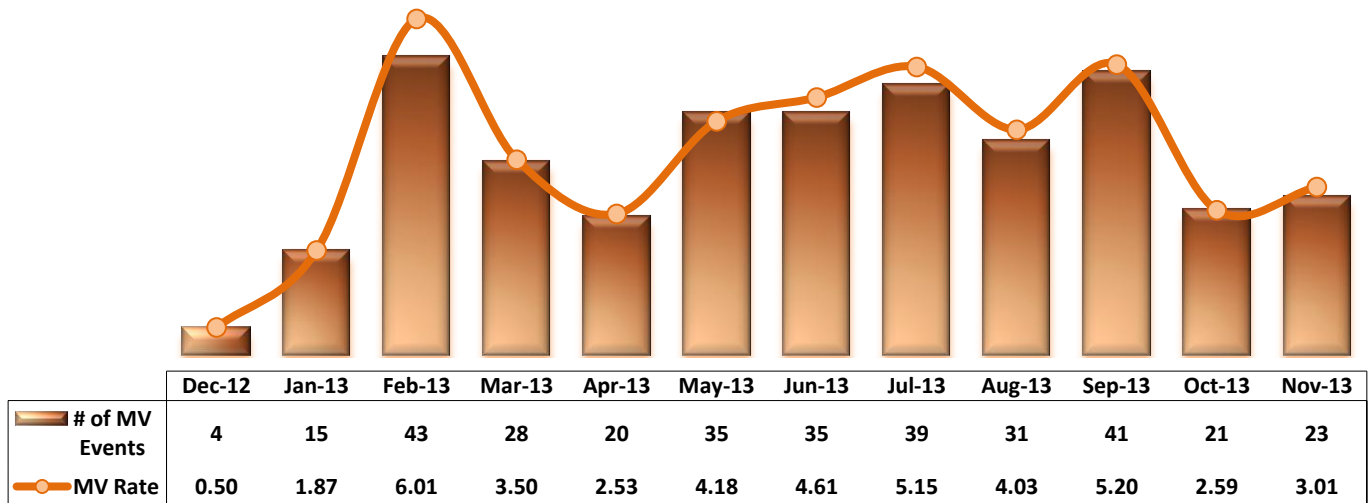
	Dec-12	Jan-13	Feb-13	Mar-13	Apr-13	May-13	Jun-13	Jul-13	Aug-13	Sep-13	Oct-13	Nov-13
■ # of Elopements	3	1	2	4	2	2	2	1	0	3	0	2
○ Elopement Rate	0.37	0.12	0.28	0.50	0.25	0.24	0.26	0.13	0.00	0.38	0.00	0.26

* It counts the total number of unauthorized leaves for any duration that were initiated during month and were recorded in Avatar. The elopement rate is the number of those unauthorized leaves that occurred for every 1000 inpatient days.

Key Trends: Medication Documentation, Medication Variance, ADR, and STAT (17~20)

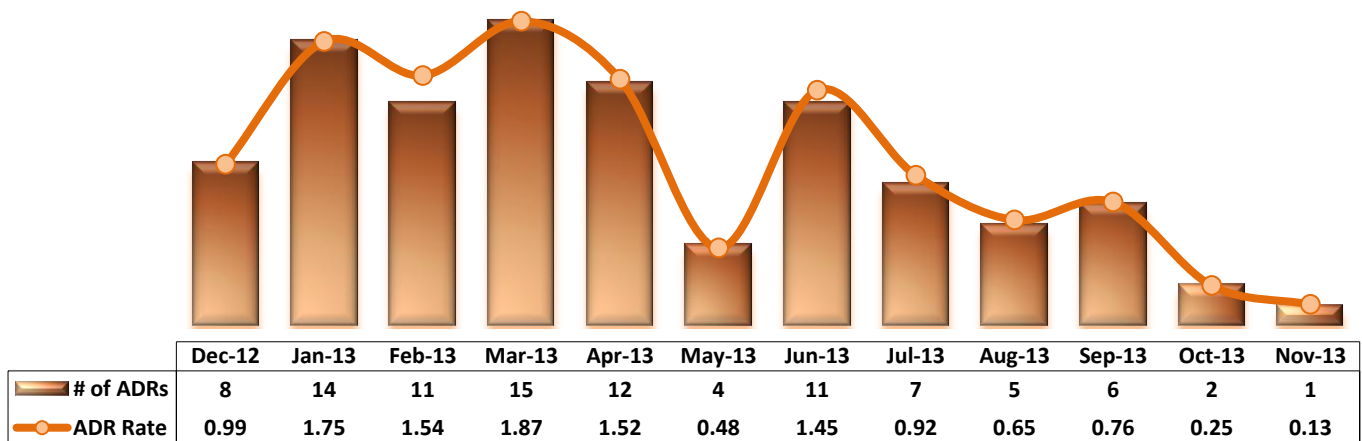
- The number of reported medication variance events stayed at 30 or above since May 2013 but declined to 21 in October 2013 and 23 in November 2013.
- The number of reported ADRs remained below 10 since July, with two in October and one in November.
- The rate of missing documentation on medication administration continued to increase in November (0.67%).
- The number of STAT events and orders increased in November but the number of unique individuals involved declined.

17. Reported Medication Variance Events



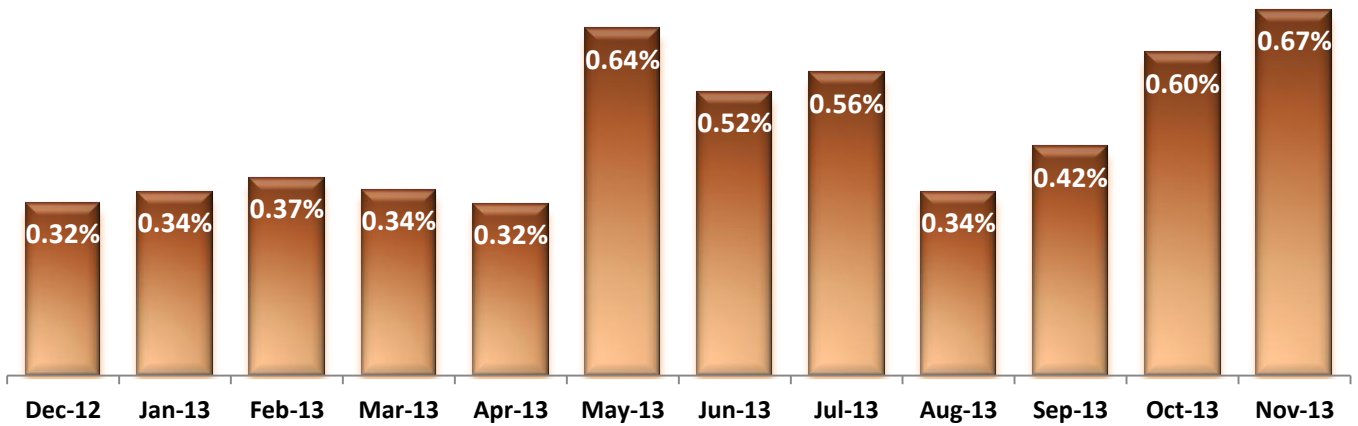
* MV Rate: Number of reported medication variance events that occurred for every 1000 inpatient days.

18. Reported Adverse Drug Reactions

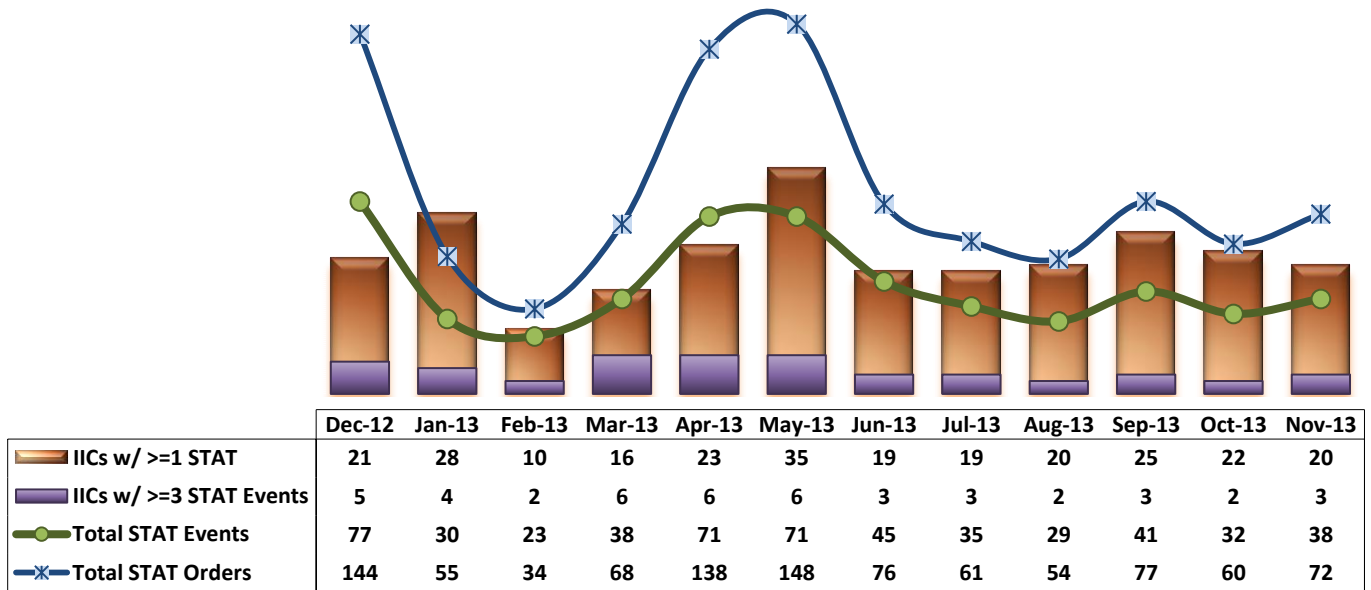


* ADR Rate: Number of reported adverse drug reaction events that occurred for every 1000 inpatient days.

19. Percent of Missing Documentation on Med-Administration



20. Number of STAT Events and Individuals Involved

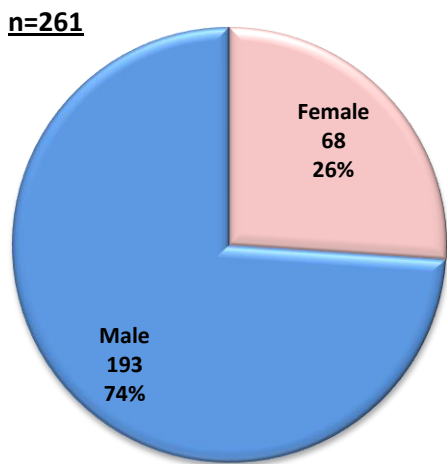


Key Trends: Demographics, Legal Status, and Length of Stay (21)

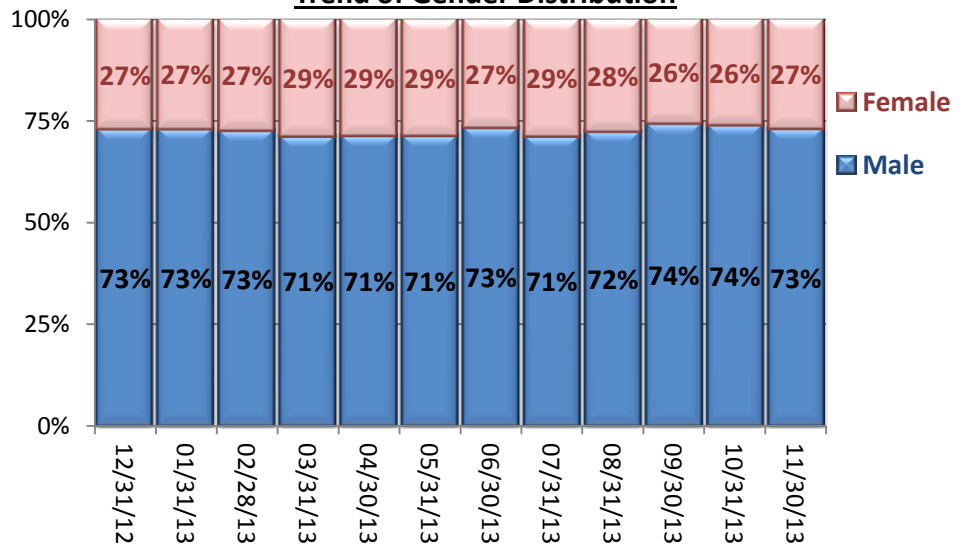
- One out of four individuals in care is female.
- The age distribution trend suggests that individuals in our care continue to age. The percentage of those 60 years or older gradually increased throughout the year while the median age continued to remain at 56 years old for the past several months.
- The proportion of individuals in forensic legal status increased for the past couple of months.
- The median length of stay (LOS) for individuals in care is 857 days as of as of November 30, 2013, meaning a half of the population have been in care for longer than 857 days. A spike of admissions in September contributed to lowering the median length of stay for the past few months.

21. Demographics and Length of Stay

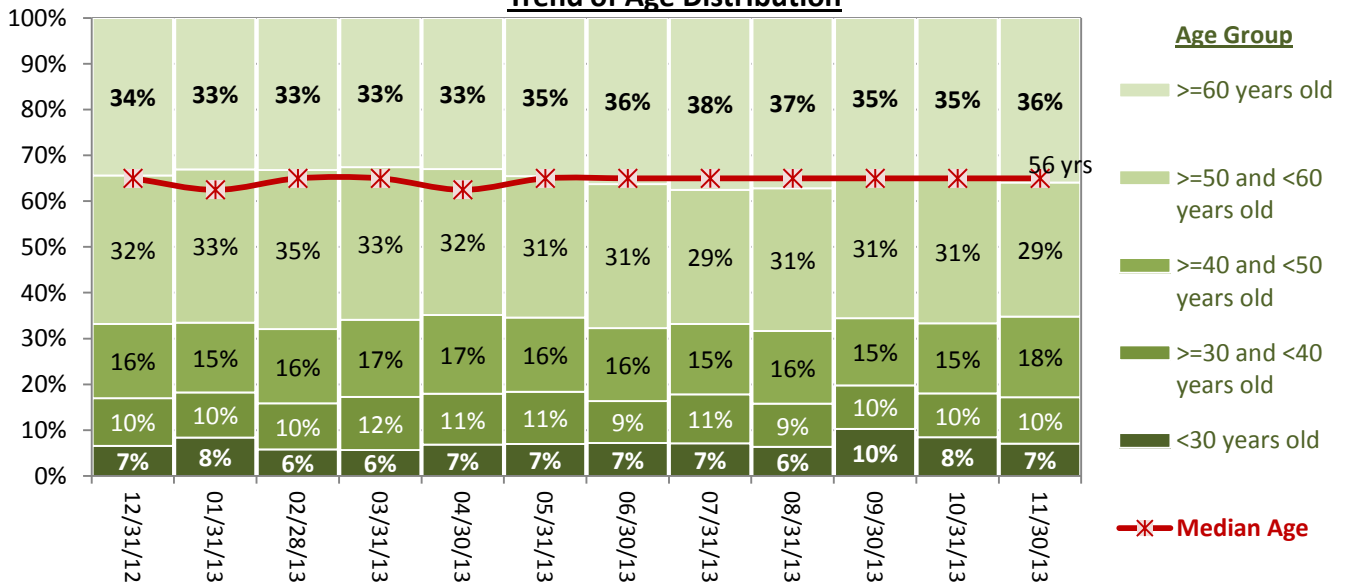
Gender Distribution (10/31/13)

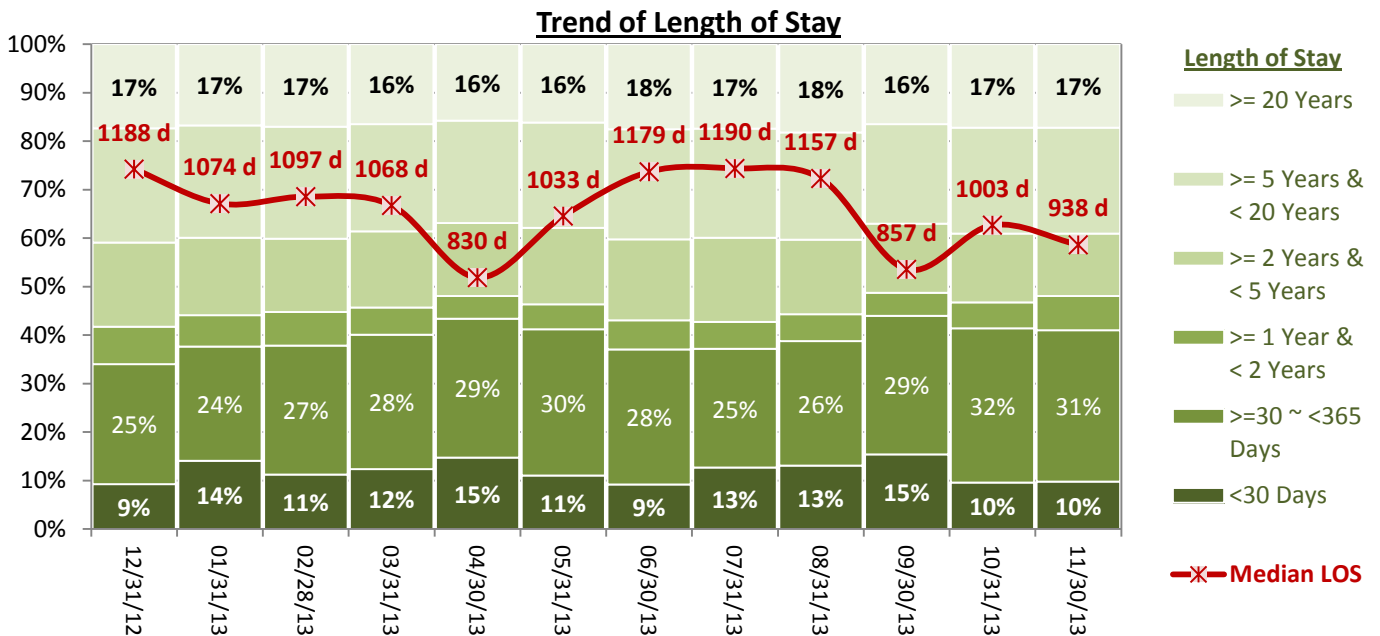
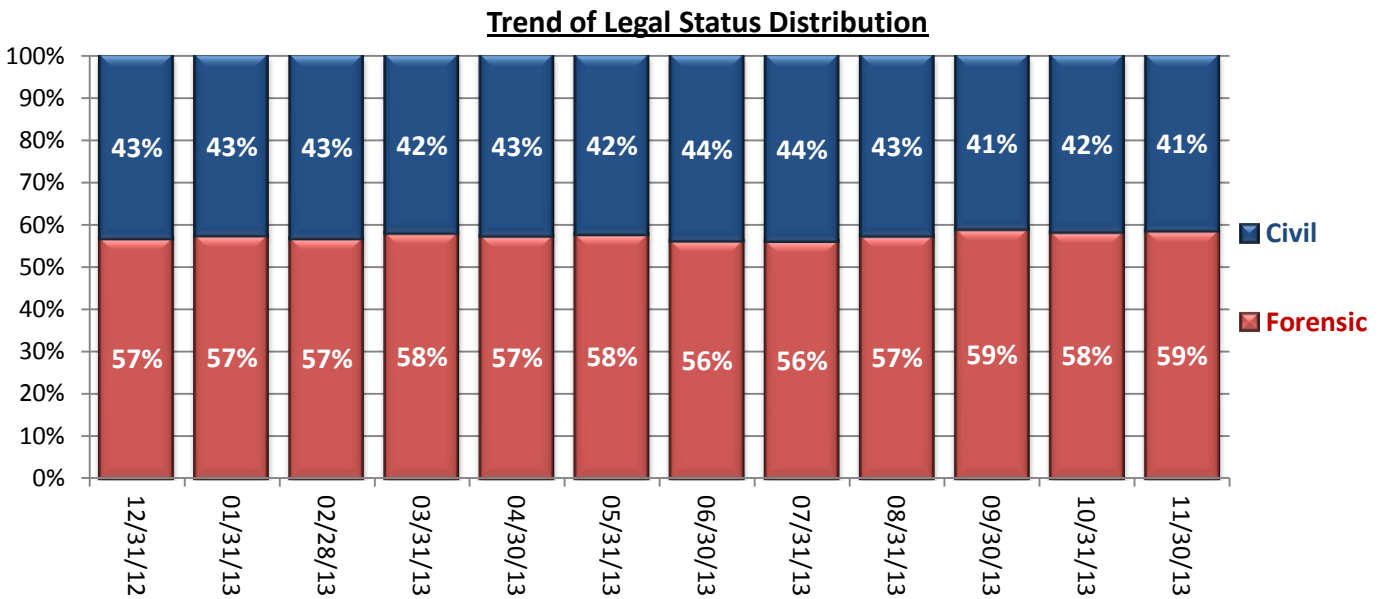
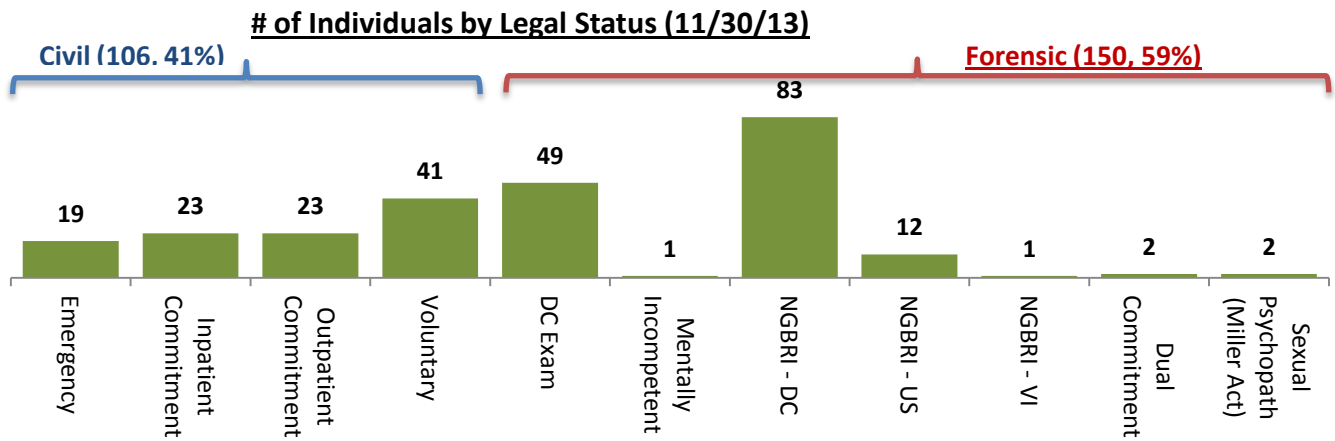


Trend of Gender Distribution



Trend of Age Distribution





Performance Related Information for Staff & Managers

1. Census, Admissions, Discharges & Transfers

Data Source: Avatar

Updated as of 12/18/13

Category	Dec-12	Jan-13	Feb-13	Mar-13	Apr-13	May-13	Jun-13	Jul-13	Aug-13	Sep-13	Oct-13	Nov-13	Monthly Average	Total (12mths)	Figure	
Admissions	Civil	14	22	14	23	19	17	16	16	18	22	15	12	17	208	Figure 1
	Pre-trial	11	16	12	18	22	13	10	18	16	21	14	18	16	189	
	Post-trial	0	1	2	2	3	1	2	3	1	3	2	2	2	22	
	Total	25	39	28	43	44	31	28	37	35	46	31	32	35	419	
Discharges	Civil	16	21	17	21	13	21	22	20	21	18	23	17	19	230	Figure 2
	Pre-trial	20	10	14	11	18	16	21	13	12	7	16	16	15	174	
	Post-trial	2	4	1	3	1	1	6	2	2	1	4	4	3	31	
	Total	38	35	32	35	32	38	49	35	35	26	43	37	36	435	
Net Increase During Month	Civil	-2	1	-3	2	6	-4	-6	-4	-3	4	-8	-5		-22	Figure 3
	Pre-trial	-9	6	-2	7	4	-3	-11	5	4	14	-2	2		15	
	Post-trial	-2	-3	1	-1	2	0	-4	1	-1	2	-2	-2		-9	
	Total	-13	4	-4	8	12	-7	-21	2	0	20	-12	-5		-16	
All Individuals on Roll at End of Month	259	263	259	267	279	272	251	253	253	273	261	256	262			
a. Present on Unit	255	259	254	261	273	267	246	247	251	268	256	250	257			
b. On AL	4	4	4	5	4	4	3	5	1	3	4	5	4			
c. On UL	0	0	1	1	2	1	2	1	1	2	1	1	1			
All Individuals on Roll: <u>Daily</u> Average during Month*	265	262	259	262	267	274	259	249	252	266	266	260	262			
a. Present on Unit	260	258	255	258	264	270	253	244	248	263	261	255	258		Figure 4	
b. On AL	5	3	4	3	2	3	5	4	3	2	4	4	4			
c. On UL	0	1	0	1	1	1	1	1	1	1	1	1	0			
Patient Days**	8059	8010	7152	8011	7918	8370	7597	7569	7693	7891	8101	7649	7835	94020		
Inter-Unit Transfers during Month	7	8	3	17	17	8	3	11	5	10	4	5	8	98	Figure 5	
Medical Leaves Initiated during Month	Emergency	9	24	23	12	10	17	12	10	10	20	14	14	171		
	Non-Emer	30	23	16	22	32	23	24	35	24	22	39	27	317		
	Total	39	47	39	34	42	40	36	45	34	32	59	41	488		
Non-Medical Leaves Initiated during Month	96	85	85	70	89	80	92	88	96	97	146	121	95	1145		
UL Initiated during Month	3	1	2	4	2	2	2	1	0	3	0	2	2	22		
Total Unique Patients Served during Month	297	298	298	294	310	310	299	286	285	299	299	291	297			
30 Day Readmission ***	Civil	2	3	0	2	3	3	0	1	0	0	1		1	15	
	Pre-trial	0	0	1	1	0	0	1	0	1	1	1		1		
	Post-trial	0	0	0	0	0	0	1	0	1	0	0		0	2	
	Total	2	3	1	3	3	3	2	1	2	1	2		2	23	

* This is the average number of individuals served on a given day for the respective month. Due to rounding from average calculation, numbers from its subcategories a, b, & c may not add up to the total number on this row.

** It counts the number of patients who are present on the unit and excludes those on authorized or unauthorized leave at 11:59pm on a given day.

*** Number of patients returning within 30 days of discharges that occurred during month.

Performance Related Information for Staff & Managers

2. Key Performance Indicators

Data Source: UI DB, ADR DB, Restraint/Seclusion Log, and Avatar

Updated as of 12/18/13

Category	Dec-12	Jan-13	Feb-13	Mar-13	Apr-13	May-13	Jun-13	Jul-13	Aug-13	Sep-13	Oct-13	Nov-13	Monthly Average	NPR* (Sep-11)	Figure
30 Day Readmit (Discharge Cohort)**	Civil	12.5%	14.3%	0.0%	9.5%	23.1%	14.3%	0.0%	5.0%	0.0%	0.0%	4.3%	7.1%		Figure 6
	Pre-trial	0.0%	0.0%	7.1%	9.1%	0.0%	0.0%	4.8%	0.0%	8.3%	14.3%	6.3%	3.8%		
	Post-trial	0.0%	0.0%	0.0%	0.0%	0.0%	0.0%	16.7%	0.0%	50.0%	0.0%	0.0%	7.0%		
	Combined	5.3%	8.6%	3.1%	8.6%	9.4%	7.9%	4.1%	2.9%	5.7%	3.8%	4.7%	5.8%	6.9%	
Number of Unusual Incidents*	163	171	132	178	194	223	120	115	89	115	191	205	182		Figure 7
UI by Severity	Catastrophe	0	0	0	0	0	0	0	0	0	0	0	0		Figure 8
	High	17	27	17	19	15	22	17	15	9	21	29	33	20	
	Medium	59	58	80	100	90	112	58	55	42	88	87	99	77	
	Low	91	101	78	87	109	124	80	84	69	47	75	73	85	
Patient Unusual Incident Rate	18.7	21.8	28.1	27.8	27.2	33.7	24.0	24.8	19.2	22.3	0.0	0.0	24.8		Figure 9
Physical Assault Incident Rate	4.6	3.9	3.6	4.0	4.4	8.6	3.4	4.9	4.3	4.2	5.2	5.8	4.8		
Selected Types of Incidents	Physical Assault	37	31	26	32	35	72	26	37	33	33	42	44	37	Figure 10
	Psych Emergency	18	17	13	9	16	31	14	9	9	19	23	29	17	
	Fall	21	25	18	16	16	34	17	15	11	27	19	16	20	
	Injury	29	30	24	20	22	47	18	22	16	31	22	34	26	
Physical Assaults by Severity	High	4	4	1	3	2	9	2	5	5	7	5	8	5	Figure 11
	Medium	15	13	10	14	10	29	13	17	13	18	16	18	16	
	Low	18	14	15	15	23	34	11	15	15	8	21	18	17	
Patient Injury Rate***	0.12	0.25	0.00	0.00	0.00	0.12	0.26	0.40	0.13	0.38	0.12	0.39	0.18	0.34	Figure 12
Patients with Major Injuries***	1	2	0	0	0	1	2	3	1	3	1	3	1		
Total Patients Injured***	24	21	9	12	12	30	14	19	10	24	14	24	18		
Total Staff Injured***	8	11	16	12	10	19	6	6	8	11	13	15	11		Figure 13
Elopement Rate	0.37	0.12	0.28	0.50	0.25	0.24	0.26	0.13	0.00	0.38	0.00	0.26	0.33	0.12	Figure 16
Medication Variance Rate	0.50	1.87	6.01	3.50	2.53	4.18	4.61	5.15	4.03	5.20	2.59	3.01	3.56		Figure 17
Adverse Drug Reaction Rate	0.99	1.75	1.54	1.87	1.52	0.48	1.45	0.92	0.65	0.76	0.25	0.13	1.02		Figure 18
Missing Med-Admin Documentation	0.32%	0.34%	0.37%	0.34%	0.32%	0.64%	0.52%	0.56%	0.34%	0.42%	0.60%	0.67%	0.45%		Figure 19
Percent of Patients Restrained	0.3%	0.0%	0.0%	0.0%	0.0%	0.0%	0.0%	0.0%	0.0%	0.0%	0.3%	0.7%	0.1%	5.7%	Figure 14
Percent of Patients Secluded	0.7%	1.3%	0.7%	0.3%	1.9%	1.9%	1.0%	0.3%	1.1%	1.3%	1.3%	2.1%	1.2%	2.4%	
Restraint Hours Rate	0.002	0.000	0.000	0.000	0.000	0.000	0.000	0.000	0.000	0.000	0.011	0.034	0.004	0.65	Figure 15
Seclusion Hours Rate	0.049	0.043	0.042	0.005	0.054	0.038	0.119	0.021	0.046	0.017	0.017	0.094	0.045	0.55	

* National Public Rate, NASMHPD Research Institute, National Research Institute (NRI), Data as of June 2012, Published in January 2013.

** Percentage of patients returning within 30 days of discharges that occurred during month

*** Refer to the next page [UI & Medication]

**** As of September 2012, we are temporarily removing the emergency involuntary medication administration data from PRISM because we discovered a technical glitch in Avatar that made this data inaccurate. A fix is under way and this indicator will be reported again as reliable data becomes available.

Performance Related Information for Staff & Managers

3. Unusual Incident & Medication

Data Source: UI DB, ADR DB, and Avatar

Updated as of 12/18/13

Category		Dec-12	Jan-13	Feb-13	Mar-13	Apr-13	May-13	Jun-13	Jul-13	Aug-13	Sep-13	Oct-13	Nov-13	Monthly Average	Total (12mths)	NPR* (Sep-11)
Unusual Incidents (includ MV)	Total UIs	171	198	216	235	234	293	189	193	151	194			207		
	Patient Involved UI Only**	151	175	201	223	215	282	182	188	148	176			194		
	Patient UI Rate	18.7	21.8	28.1	27.8	27.2	33.7	24.0	24.8	19.2	22.3			24.8		
	Unique Patients Involved	95	110	117	117	108	126	100	109	89	120			109		
Unusual Incidents (excluding MV)	Total UIs	167	186	175	206	214	258	155	154	120	156	191	205	182	2187	
	Major UIs Only	127	133	115	101	115	175	87	94	71	111	126	124	115	1379	
	Pt Involved UI Only	149	163	158	194	203	246	147	149	116	138	179	191	169	2033	
	Patient UI Rate	18.5	20.3	22.1	24.2	25.6	29.4	19.3	19.7	15.1	17.5	22.1	25.0	#####		
	Unique Pts Involved in UI	95	110	117	117	108	126	100	109	89	120	116	101	109	1308	
Selected Types of Incidents	Physical Assault	37	31	26	32	35	72	26	37	33	33	42	44	37	448	
	Psych Emergency	18	17	13	9	16	31	14	9	9	19	23	29	17	207	
	Fall	21	25	18	16	16	34	17	15	11	27	19	16	20	235	
	Injury	29	30	24	20	22	47	18	22	16	31	22	34	26	315	
Physical Assault Rate		4.6	3.9	3.6	4.0	4.4	8.6	3.4	4.9	4.3	4.2	5.2	5.8	4.8		
UI by Severity	Catastrophe	0	0	0	0	0	0	0	0	0	0	0	0	0	0	
	High	17	27	17	19	15	22	17	15	9	21	29	33	20	241	
	Medium	59	58	80	100	90	112	58	55	42	88	87	99	77	928	
	Low	91	101	78	87	109	124	80	84	69	47	75	73	85	1018	
Physical Assaults by Severity	High	4	4	1	3	2	9	2	5	5	7	5	8	5	55	
	Medium	15	13	10	14	10	29	13	17	13	18	16	18	16	186	
	Low	18	14	15	15	23	34	11	15	15	8	21	18	17	207	
Total Patients Injured***		24	21	9	12	12	30	14	19	10	24	14	24	18	213	
Patients with Major Injuries***		1	2	0	0	0	1	2	3	1	3	1	3	1	17	
Patient Injury Rate***		0.12	0.25	0.00	0.00	0.00	0.12	0.26	0.40	0.13	0.38	0.12	0.39	0.18		0.34
Total Staff Injured**		8	11	16	12	10	19	6	6	8	11	13	15	11		
Total UL Incident Reports		5	5	2	3	2	2	1	4	1	3	1	2	3	31	
Total UIs Documented in Avatar		3	1	2	4	2	2	2	1	0	3	0	2	2		
Elopement Rate		0.37	0.12	0.28	0.50	0.25	0.24	0.26	0.13	0.00	0.38	0.00	0.26	0.33		0.12
Med Variance (MV) Reports**		4	15	43	28	20	35	35	39	31	41	21	23	28	335	
MV Rate		0.50	1.87	6.01	3.50	2.53	4.18	4.61	5.15	4.03	5.20	2.59	3.01	3.56		
Adverse Drug Reactions Reports		8	14	11	15	12	4	11	7	5	6	2	1	8	96	
ADR Rate		0.99	1.75	1.54	1.87	1.52	0.48	1.45	0.92	0.65	0.76	0.25	0.13	1.02		
Total Med Administrations Scheduled		111670	110726	97488	108150	103057	107694	102644	102303	102848	101049	95559	101422		1244610	
Total Missing Documentations		356	375	356	370	326	690	537	572	348	427	570	684		5611	
Percent of Missing Documentation		0.32%	0.34%	0.37%	0.34%	0.32%	0.64%	0.52%	0.56%	0.34%	0.42%	0.60%	0.67%		0.45%	
Total STAT Orders		144	55	34	68	138	148	76	61	54	77	60	72	82		Figure 17
Total STAT Events****		77	30	23	38	71	71	45	35	29	41	32	38	44		
Total Individuals Involved >=1 STAT		21	28	10	16	23	35	19	19	20	25	22	20	22		
Total Patients with >=3 STAT Events		5	4	2	6	6	6	3	3	2	3	2	3	4		

* National Public Rate, NASMHPD Research Institute, National Research Institute (NRI), Data as of June 2012, Published in January 2013.

** Numbers may change if any additional UI report is made after the data run date from UI database (around the 15th of the following month); According to the revised UI policy as of November 4, 2013, a medication variance (MV) incident is no longer considered to be an unusual incident. While the official number of UIs until October 2013 remains as including MVs, for PRISM publication, UI data for the past 12 months herein has been reanalyzed in order to show the UI trend in consistent logic.

*** Injury is broadly defined to include any type of injuries regardless of the cause or severity level. The total number of patients injured represents all of the reported injuries including minor injuries treated with first aid alone. However, the patient injury rate considers only the number of patient injuries that required beyond first-aid level treatment based on the NRI definition and the patient injury rate is the number of 'major' patient injuries per every 1000 inpatient days

**** One STAT event may involve more than one STAT order for the same patient. Any orders placed within 20 minute timeframe are considered to belong to one STAT event.

Performance Related Information for Staff & Managers

4. Restraint & Seclusion

Data Source: Restraint/Seclusion Log and UI DB (for # of total events and patients) and Avatar (for patient days/hours)

Updated as of 12/18/13

Category	Dec-12	Jan-13	Feb-13	Mar-13	Apr-13	May-13	Jun-13	Jul-13	Aug-13	Sep-13	Oct-13	Nov-13	Monthly Average	Total (12mths)	NPR* (Sep-11)
Number of Restraint Events	1	0	0	0	0	0	0	0	0	0	2	2	0.4	5	
Number of Unique Patients Restrained	1	0	0	0	0	0	0	0	0	0	1	2	0.3		
Percentage of Patients Restrained	0.3%	0.0%	0.0%	0.0%	0.0%	0.0%	0.0%	0.0%	0.0%	0.0%	0.3%	0.7%	0.1%		5.7%
Total Restraint Hours (h:mm)	0:20	0:00	0:00	0:00	0:00	0:00	0:00	0:00	0:00	0:00	2:08	6:15	0:43	8:43	
Restraint Hours Rate	0.002	0.000	0.000	0.000	0.000	0.000	0.000	0.000	0.000	0.000	0.011	0.034	0.004		0.65
Number of Seclusion Events	5	7	5	1	10	12	5	4	5	4	4	11	6.1	73	
Number of Unique Patients Secluded	2	4	2	1	6	6	3	1	3	4	4	6	3.5		
Percentage of Patients Secluded	0.7%	1.3%	0.7%	0.3%	1.9%	1.9%	1.0%	0.3%	1.1%	1.3%	1.3%	2.1%	1.2%		2.4%
Total Seclusion Hours (h:mm)	9:32	8:12	7:13	1:00	10:18	7:44	21:45	3:50	8:30	3:10	3:20	17:11	8:28	101:45	
Seclusion Hours Rate	0.049	0.043	0.042	0.005	0.054	0.038	0.119	0.021	0.046	0.017	0.017	0.094	0.045		0.55

* National Public Rate, NASMHPD Research Institute, National Research Institute (NRI), Data as of June 2012, Published in January 2013.

Performance Related Information for Staff & Managers

5. Demographic Information of Individuals in Care

Data Source: Avatar

Updated as of 12/18/13

Category	Sub-group	Dec-12	Jan-13	Feb-13	Mar-13	Apr-13	May-13	Jun-13	Jul-13	Aug-13	Sep-13	Oct-13	Nov-13	Monthly Average	Percent*
Total Active (on Roll) at End of Month*		259	263	259	267	279	272	251	253	253	273	261	256	262	
Gender	Female	70	71	71	77	80	78	67	73	70	70	68	69	72	27.5%
	Male	189	192	188	190	199	194	184	180	183	203	193	187	190	72.5%
Age	Median Age (Years)	56 yrs	55 yrs	56 yrs	56 yrs	55 yrs	56 yrs	56 yrs	56 yrs	56 yrs	56 yrs	56 yrs	56 yrs	56 yrs	
	<30 years old	17	22	15	15	19	19	18	18	16	28	22	18	19	7.2%
	>=30 and <40 years old	27	26	26	31	31	31	23	27	24	26	25	26	27	10.3%
	>=40 and <50 years old	42	40	42	45	48	44	40	39	40	40	40	45	42	16.1%
	>=50 and <60 years old	84	88	90	89	89	84	79	74	79	84	82	75	83	31.7%
	>=60 years old	89	87	86	87	92	94	91	95	94	94	95	92	91	34.8%
Legal Status of Individuals on Roll at End of Month	Emergency	21	20	19	22	29	31	27	19	18	27	18	19	23	8.6%
	Inpatient Commitment	21	21	21	23	21	21	21	23	20	22	24	23	22	8.3%
	Outpatient Commitment	24	23	26	23	24	18	18	19	24	21	25	23	22	8.5%
	Voluntary	46	48	46	44	45	45	44	50	46	42	42	41	45	17.1%
	Civil Sub-total	112	112	112	112	119	115	110	111	108	112	109	106	112	42.5%
	DC Exam	39	44	38	48	54	50	38	38	41	55	48	49	45	17.2%
	Mentally Incompetent	3	5	5	4	1	1	1	1	2	2	2	1	2	0.9%
	NGBRI - DC	92	90	92	89	90	91	87	89	88	89	86	83	89	33.9%
	NGBRI - US	9	8	8	10	10	10	10	9	9	10	11	12	10	3.7%
	NGBRI - VI	1	1	1	1	1	1	1	1	1	1	1	1	1	0.4%
Dual Commitment	1	1	1	1	2	2	2	2	2	2	2	2	2	0.6%	
Sexual Psychopath (Miller Ac	2	2	2	2	2	2	2	2	2	2	2	2	2	0.8%	
	Forensic Sub-total	147	151	147	155	160	157	141	142	145	161	152	150	151	57.5%
Length of Stay	Median LOS (Days)	1188 d	1074 d	1097 d	1068 d	830 d	1033 d	1179 d	1190 d	1157 d	857 d	1003 d	938 d	1051 d	
	Average LOS (Days)	3248 d	3152 d	3181 d	3093 d	2973 d	3065 d	3294 d	3217 d	3207 d	2963 d	3108 d	3097 d	3133 d	
	<30 Days	24	37	29	33	41	30	23	32	33	42	25	25	31	11.9%
	>=30 ~ <365 Days	64	62	69	74	80	82	70	62	65	78	83	80	72	27.6%
	>= 1 Year & < 2 Years	20	17	18	15	13	14	15	14	14	13	14	18	15	5.9%
	>= 2 Years & < 5 Years	45	42	39	42	42	43	42	44	39	39	37	33	41	15.5%
	>= 5 Years & < 20 Years	61	61	60	59	59	59	57	57	56	56	57	56	58	22.2%
	>= 20 Years	45	44	44	44	44	44	44	44	46	45	45	44	44	16.9%

* Counts the total number of individuals who are on the hospital roll at end of each month. This number serves as denominator to calculate percentage of each group.