



Government of the District of Columbia
Department of Behavioral Health (DBH)



PRISM
Performance Related Information for Staff and Managers

May 2016

Office of Statistics and Reporting (OSR), 06/20/16

Table of Contents

- 1. Admissions to SEH 1
- 2. Discharges from SEH 1
- 3. Average Daily Census..... 2
- 4. Transfers..... 2
- 5. 30-Day Readmission Rate 2
- 6. Unusual Incidents 3
- 7. Patient-Involved Unusual Incidents 3
- 8. Admissions vs. Patient UI Rate 4
- 9. Unusual Incidents by Severity 4
- 10. Selected Types of Incidents 4
- 11. Physical Assaults by Severity 5
- 12. Patient Injuries 5
- 13. Staff Injuries 5
- 14. Patient and Staff Falls 6
- 15. Percent of Patients Restrained or Secluded 6
- 16. Restraint Hours Rate & Seclusion Hours Rate 6
- 17. Elopements..... 7
- 18. Reported Medication Variance Events..... 7
- 19. Reported Adverse Drug Reactions 8
- 20. Percent of Missing Documentation on Med-Administration..... 8
- 21. Medication Refusal Rate* 8
- 22. Number of STAT Events and Individuals Involved 9
- 23. Percentage of SiteFM Work Orders Completed within 3 Days 9
- 24. Demographics..... 10
- 25. Length of Stay..... 11

Appendix Tables

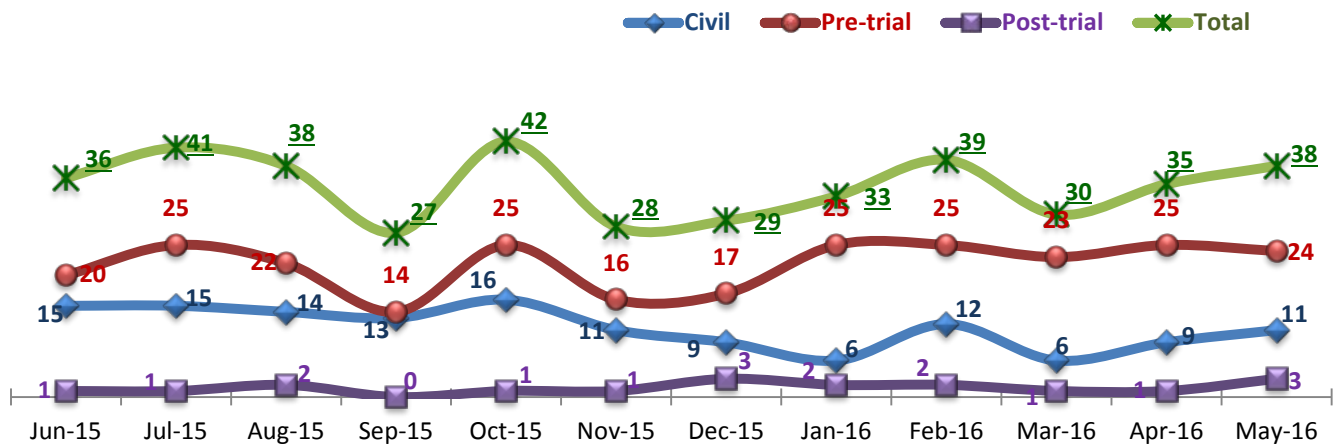
Data Disclaimer

The primary source of data extracted and analyzed herein is Avatar, the Saint Elizabeths Hospital’s electronic medical record system. Additional data source includes, but is not limited to, the Hospital’s Unusual Incident Database and SiteFM. Data reflects information as entered in each system by users. The Office of Statistics and Reporting (OSR) has made reasonable efforts to ensure that data and its accompanying information are as accurate and up-to-date as possible at the time of analysis and publication but does not guarantee the accuracy, reliability, or completeness of data. The OSR is not liable for any misinterpretation or misuse of the data. Use of any information from PRISM must be fully acknowledged and/or cited. Use of PRISM data for anything other than patient care determinations or management of the services provided within the hospital (including external publications, research papers, presentations, etc.) is prohibited without written permission from the Chief Quality and Data Manager Officer at the Saint Elizabeths Hospital.

Key Trends: Admission, Discharge, Transfer, Census, and Readmissions (1~5)

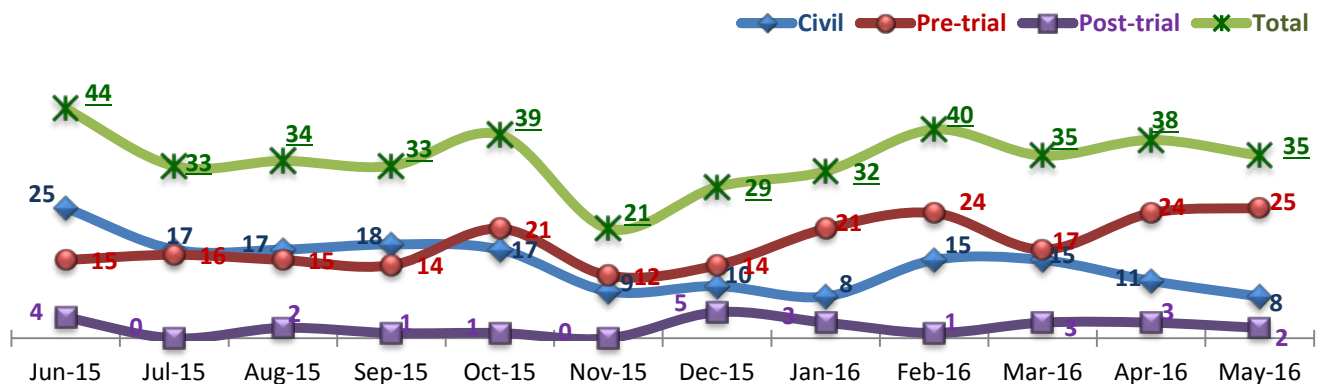
- The number of discharges was offset by an equal number of admissions in May 2016. There were 38 discharges in April compared to just 35 in May, and there were 35 Admissions in April with 38 discharges in May, resulting in a +3 increase in the census at the end of the month.
- Despite the increased census at the end of the month, the average daily census actually decreased by 3 due to longer lengths of stay of some of the IICS during the month. The daily average of 276 patients on roll was the lowest in the last 8 months.
- AT 2.6%, the 30-day readmission rate continued to be well below the national average of 6.9%. In fact, in the last 12 months, there has been only 1 Pre-trial and 1 Post-trial readmission in the prior 30 days of any month being considered. Over that same time period, only June 2015 had more than 1 30-day readmission.

1. Admissions to SEH



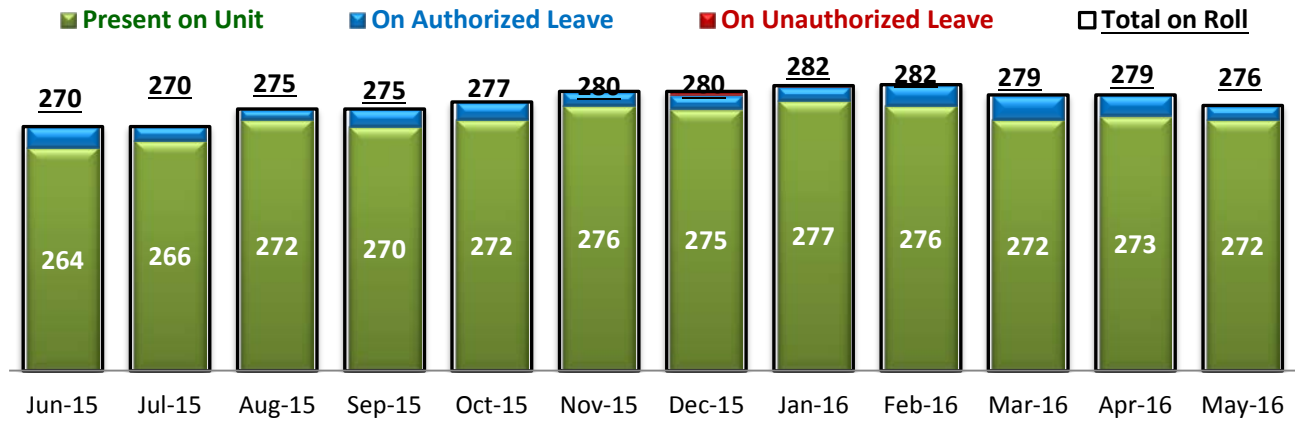
* Number of admissions to SEH inpatient program, including transfers from forensic outpatient to inpatient program.

2. Discharges from SEH



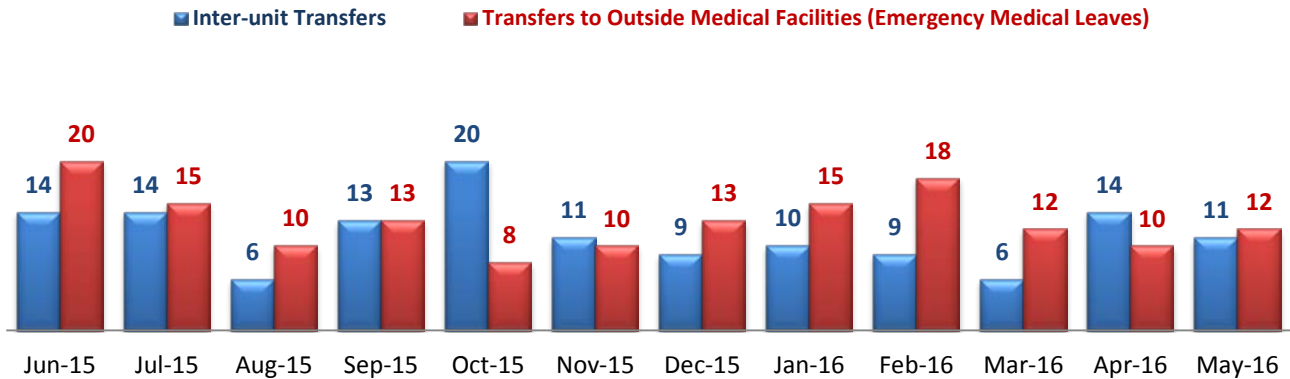
* Number of discharges from SEH inpatient program, including transfers from inpatient to forensic outpatient program.

3. Average Daily Census



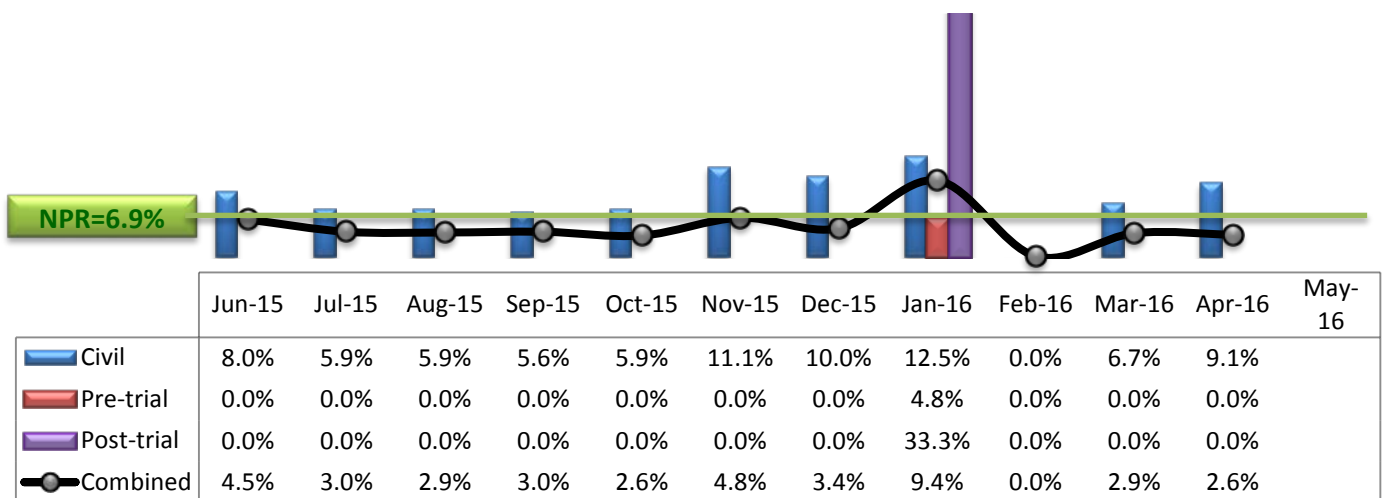
* Data above is the daily average number of individuals counted at 11:59 PM every day during each month.

4. Transfers



* Number of inter-unit transfers that occurred during month and number of emergency medical leaves that were initiated during month.

5. 30-Day Readmission Rate



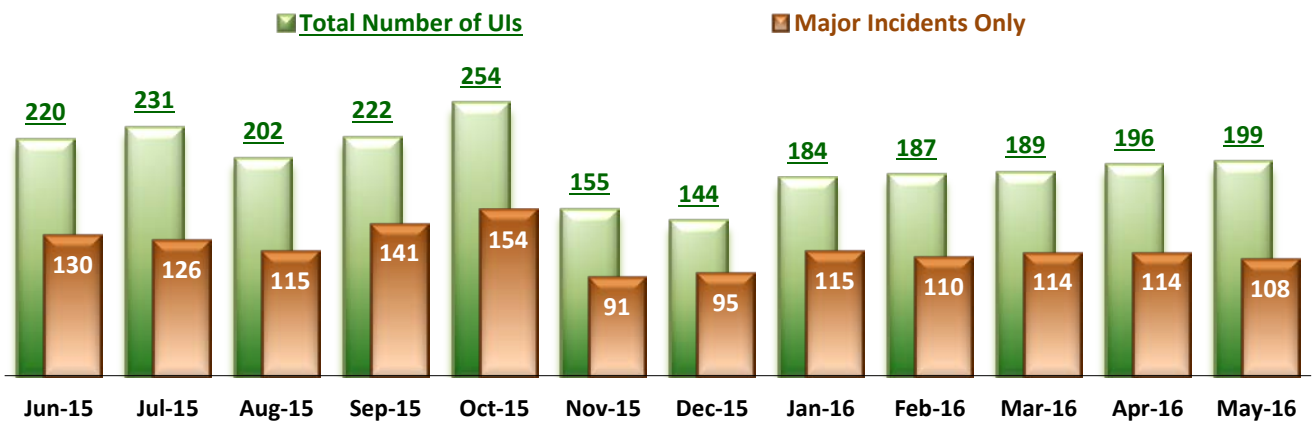
* Percent of discharges that returned to SEH within 30 days of discharges. It does not include those who may have been re-hospitalized at another psychiatric facility. This measure requires 30-day observation following discharge.

** The post-trial denominators (discharges) per month range only between one and six, making the monthly re-admission rate high when there is any. For example, in December 2014, there was only one post-trial discharge, which was readmitted within 30 days. Thus, the 30-day readmission rate for post-trial discharge for this month is 100%.

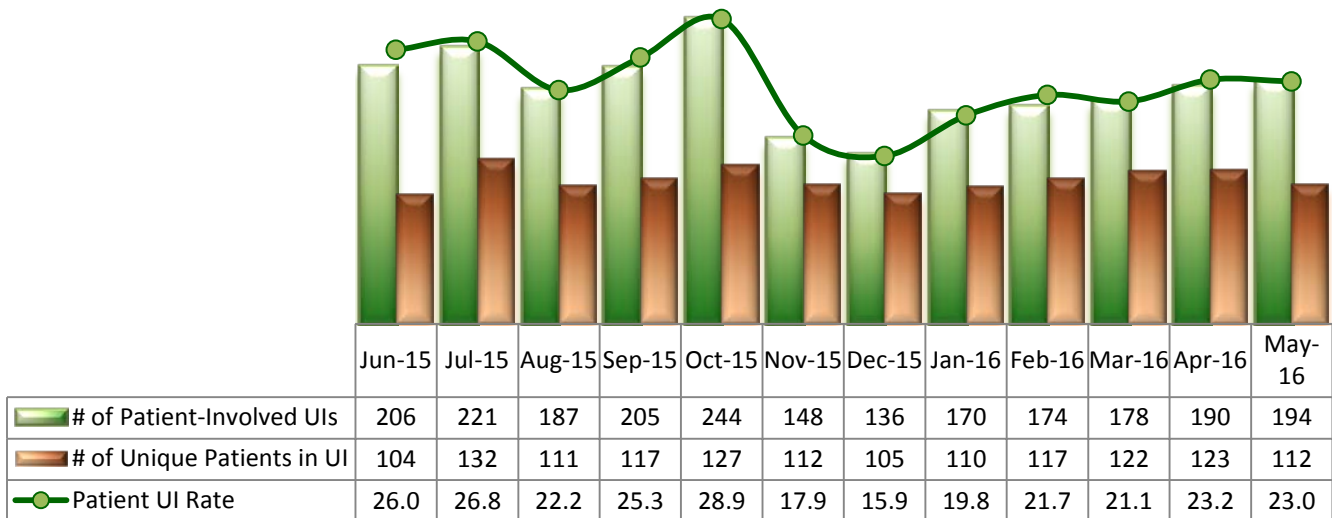
Key Trends: Unusual Incidents (6~17)

- In each of the last seven months, culminating in May 2016, there have been fewer than 200 unusual incidents (UIs). Major UIs continue to range at 50~60% of the total each month and the number of patient-involved UIs have increased every month since December 2015.
- With the exception of the intervals Sep-Oct'15, Nov-Dec'15, and Apr-May'16, the patient UI rate has been closely linked to the number of admissions over the last year. From month-to-month, as admissions rose, so did the rate of patient-related UIs and consequently fell when admissions decreased.
- The percentage of patients requiring restraint (7.1%) in May was the lowest to-date in 2016.
- Both the restraint and seclusion hours rate continue to be far below that of the National Public Rate. In May, both rates decreased but the restraint hours rate had a steeper decline dropping by 50%.

6. Unusual Incidents

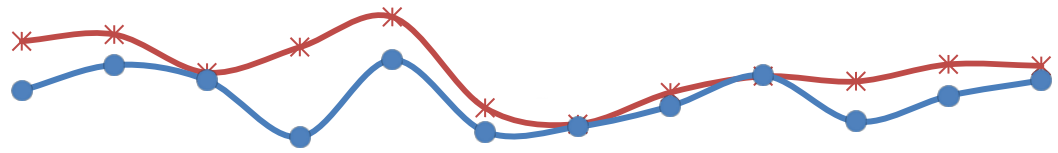


7. Patient-Involved Unusual Incidents



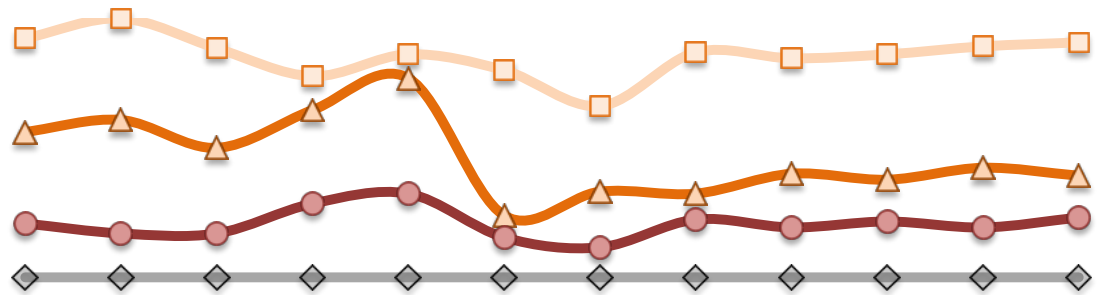
* The patient UI rate is the number of patient-involved unusual incidents reported for every 1000 inpatient days.

8. Admissions vs. Patient UI Rate



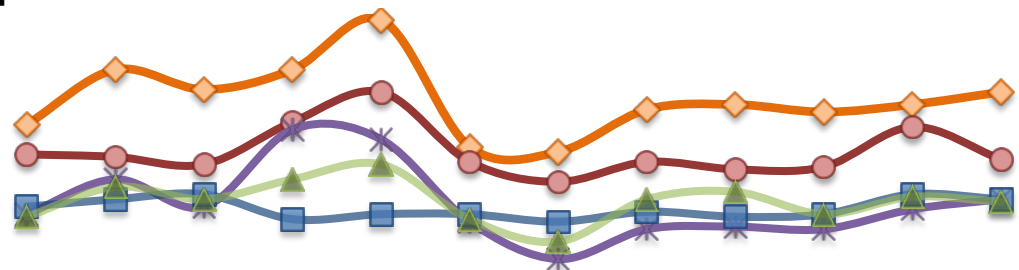
	Jun-15	Jul-15	Aug-15	Sep-15	Oct-15	Nov-15	Dec-15	Jan-16	Feb-16	Mar-16	Apr-16	May-16
—*— Patient UI Rate	26.0	26.8	22.2	25.3	28.9	17.9	15.9	19.8	21.7	21.1	23.2	23.0
—●— Admission	36	41	38	27	42	28	29	33	39	30	35	38

9. Unusual Incidents by Severity



	Jun-15	Jul-15	Aug-15	Sep-15	Oct-15	Nov-15	Dec-15	Jan-16	Feb-16	Mar-16	Apr-16	May-16
□ 1) Low	120	130	115	101	112	104	86	113	110	112	116	118
△ 2) Medium	73	79	65	84	100	31	43	42	52	49	55	51
● 3) High	27	22	22	37	42	20	15	29	25	28	25	30
◇ 4) Catstrp	0	0	0	0	0	0	0	0	0	0	0	0
Total UI	220	231	202	222	254	155	144	184	187	189	196	199

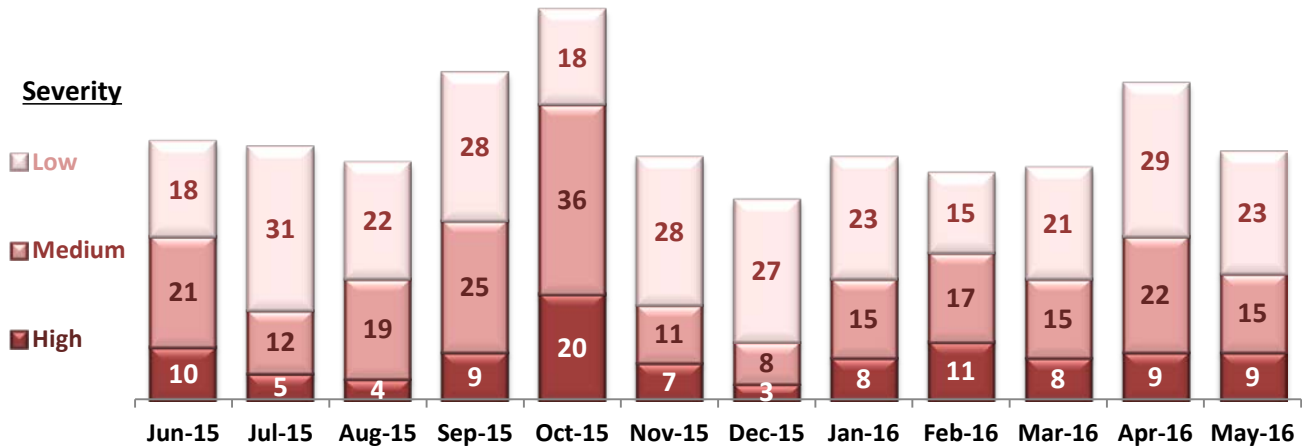
10. Selected Types of Incidents



	Jun-15	Jul-15	Aug-15	Sep-15	Oct-15	Nov-15	Dec-15	Jan-16	Feb-16	Mar-16	Apr-16	May-16
◆ Aggressive Behavior	61	83	75	83	103	52	50	67	69	66	69	74
● Physical Assault	49	48	45	62	74	46	38	46	43	44	60	47
* Pysch Emerg.	25	39	28	59	55	22	7	19	20	19	27	31
■ Fall	28	31	33	23	25	25	22	26	24	25	33	31
▲ Injury	24	36	31	39	45	23	14	31	34	25	32	30

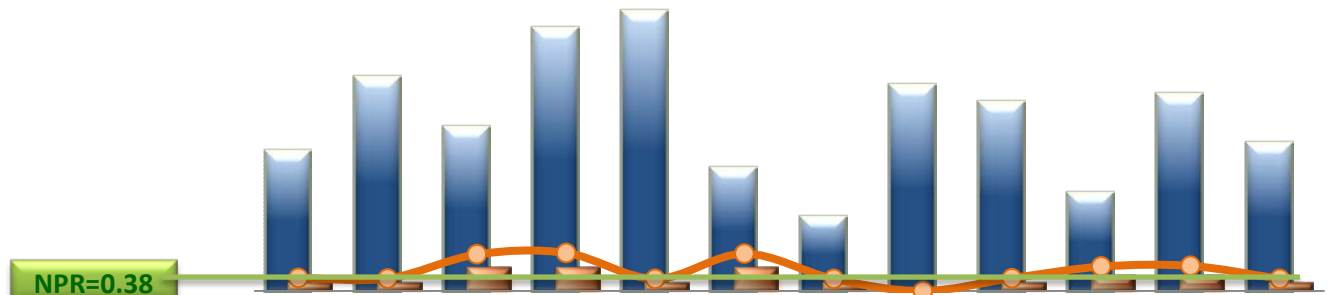
* These are incident types that are frequently reported. Some incidents may be counted in multiple categories. For example, a physical assault incident that accompanied psychiatric emergency and injury is counted under psychiatric emergency and injury as well as under physical assault. Injury is broadly defined to include any type of injuries regardless of the cause or severity level.

11. Physical Assaults by Severity



* Any physical assault that accompanies a code 13 or results in extensive injury needing off-unit treatment or transfer to ER is considered to be high severity; any physical assault that causes a minor injury that can be treated on unit is considered to be medium severity; and physical assault events that result in no injury are considered to be low severity.

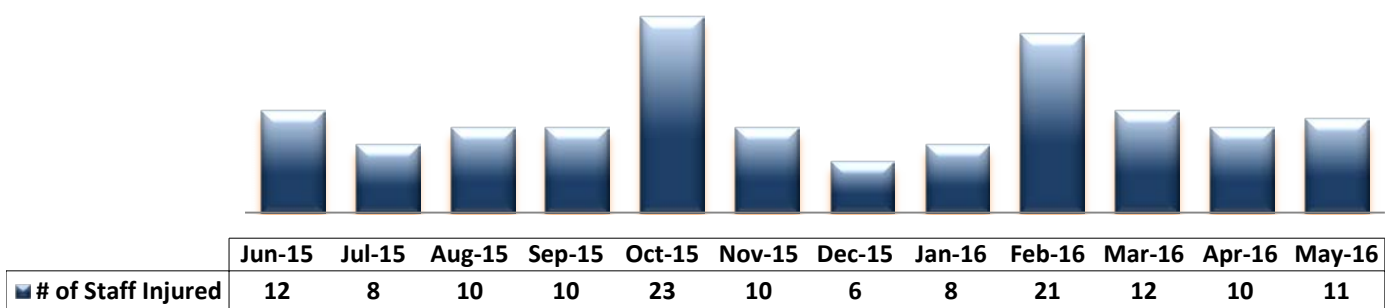
12. Patient Injuries



	Jun-15	Jul-15	Aug-15	Sep-15	Oct-15	Nov-15	Dec-15	Jan-16	Feb-16	Mar-16	Apr-16	May-16
Total Pts Injured	17	26	20	32	34	15	9	25	23	12	24	18
Major Pt Injuries*	1	1	3	3	1	3	1	0	1	2	2	1
Patient Injury Rate	0.13	0.12	0.36	0.37	0.12	0.36	0.12	0.00	0.12	0.24	0.24	0.12

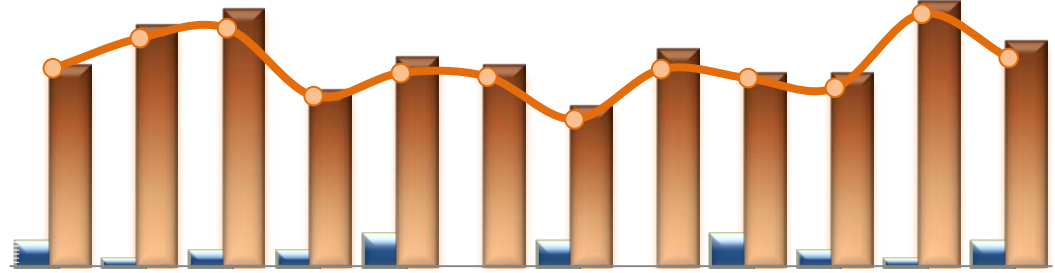
* Injury is broadly defined to include any type of injuries regardless of the cause or severity level. The total number of patients injured represents all of the reported injuries including minor injuries treated with first aid alone. However, the patient injury rate considers only the number of patient injuries that are required beyond first-aid level treatment based on the NRI definition and the patient injury rate is the number of 'major' patient injuries per every 1000 inpatient days

13. Staff Injuries



* Injury is broadly defined to include any type of injuries regardless of the cause or severity level. The total number of staff injured represents all of the reported staff injuries including minor injuries treated with first aid alone.

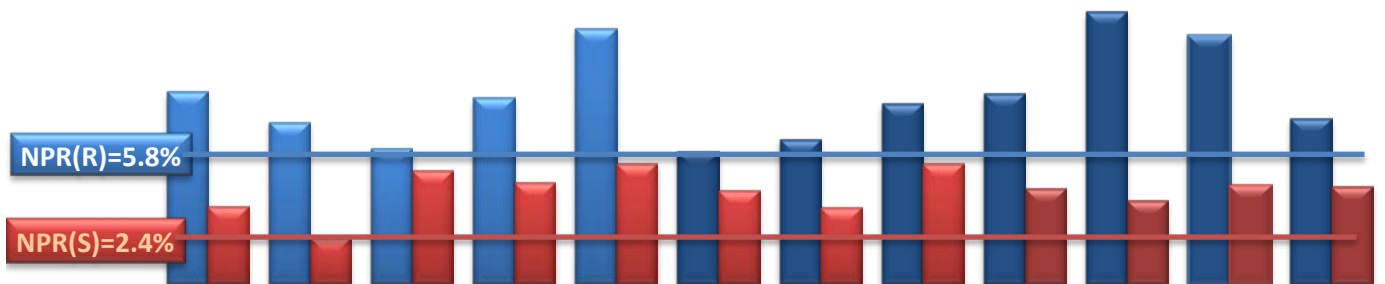
14. Patient and Staff Falls



	Jun-15	Jul-15	Aug-15	Sep-15	Oct-15	Nov-15	Dec-15	Jan-16	Feb-16	Mar-16	Apr-16	May-16
Total Staff who Fell	3	1	2	2	4	0	3	0	4	2	1	3
Total Patients who Fell	25	30	32	22	26	25	20	27	24	24	33	28
Patient Fall Rate	3.15	3.64	3.79	2.71	3.08	3.02	2.34	3.14	3.00	2.84	4.02	3.32

* The patient fall rate is the number of patient falls per every 1000 inpatient days.

15. Percent of Patients Restrained or Secluded

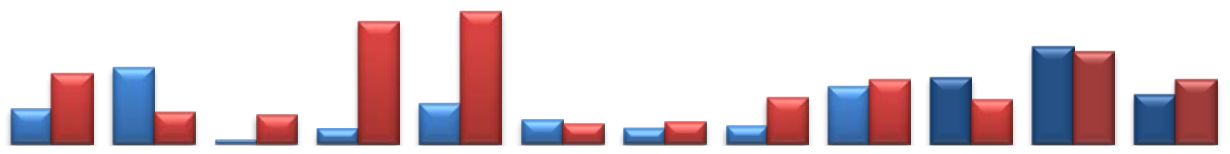


	Jun-15	Jul-15	Aug-15	Sep-15	Oct-15	Nov-15	Dec-15	Jan-16	Feb-16	Mar-16	Apr-16	May-16
Restraint	8.2%	6.9%	5.8%	7.9%	10.9%	5.6%	6.2%	7.7%	8.1%	11.6%	10.6%	7.1%
Seclusion	3.3%	2.0%	4.8%	4.3%	5.1%	4.0%	3.2%	5.1%	4.1%	3.5%	4.2%	4.2%

* Percent of unique patients who were restrained at least once and percent of unique patients who were secluded at least once. The denominator includes all individuals who were served in care 1+ day during month.

** Prior to April 2015, the Hospital tracked only mechanical restraint events, but the Hospital's restraint policy has changed to include any physical holds. The sudden increase of the restraint data as of April 2015 reflects this change.

16. Restraint Hours Rate & Seclusion Hours Rate

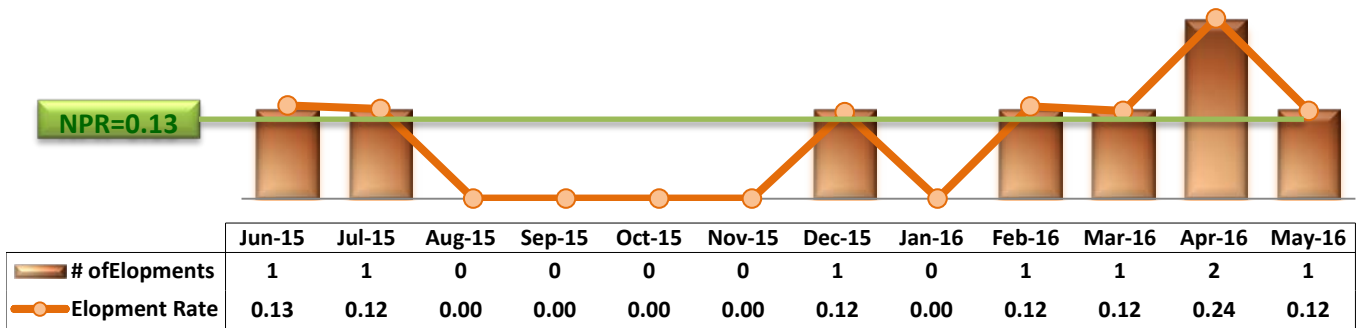


	Jun-15	Jul-15	Aug-15	Sep-15	Oct-15	Nov-15	Dec-15	Jan-16	Feb-16	Mar-16	Apr-16	May-16
Restraint	0.074	0.163	0.008	0.031	0.086	0.052	0.032	0.038	0.123	0.142	0.207	0.104
Seclusion	0.150	0.067	0.062	0.260	0.281	0.043	0.047	0.099	0.136	0.093	0.196	0.137

* Restraint/Seclusion Hours Rate: Number of hours spent in restraint/seclusion for every 1000 inpatient hours.

** The duration of each physical hold event is counted as 1 minute as a physical hold is ordered and used only as a temporary intervention that lasts less than a minute to break up any physical conflicts or to administer emergency medications.

17. Elopements

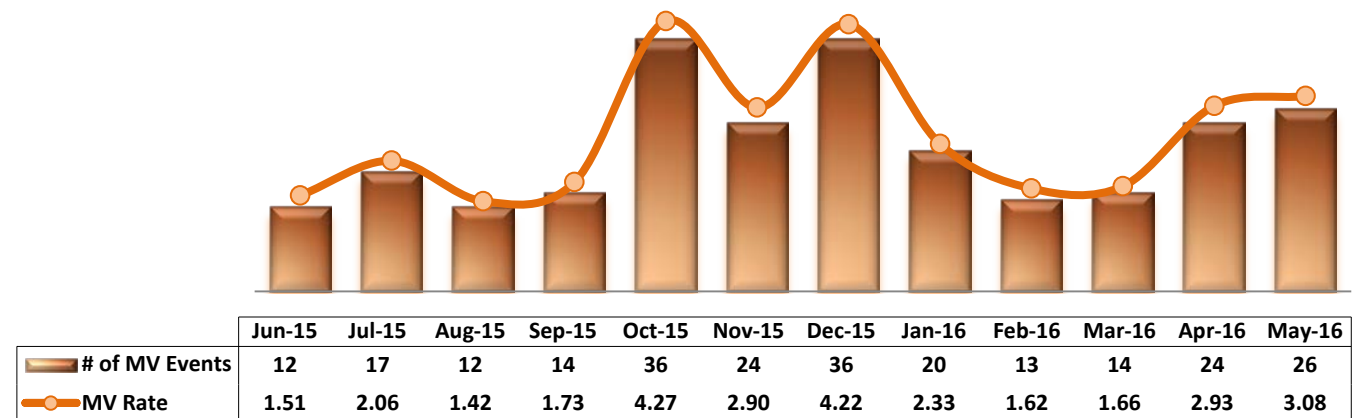


* Data herein counts the number of unauthorized leaves for any duration that were initiated during month and were recorded in Avatar. The elopement rate is the number of those unauthorized leaves that occurred for every 1000 inpatient days.

Key Trends: Medication Documentation, MV, ADR, and STAT (18~22)

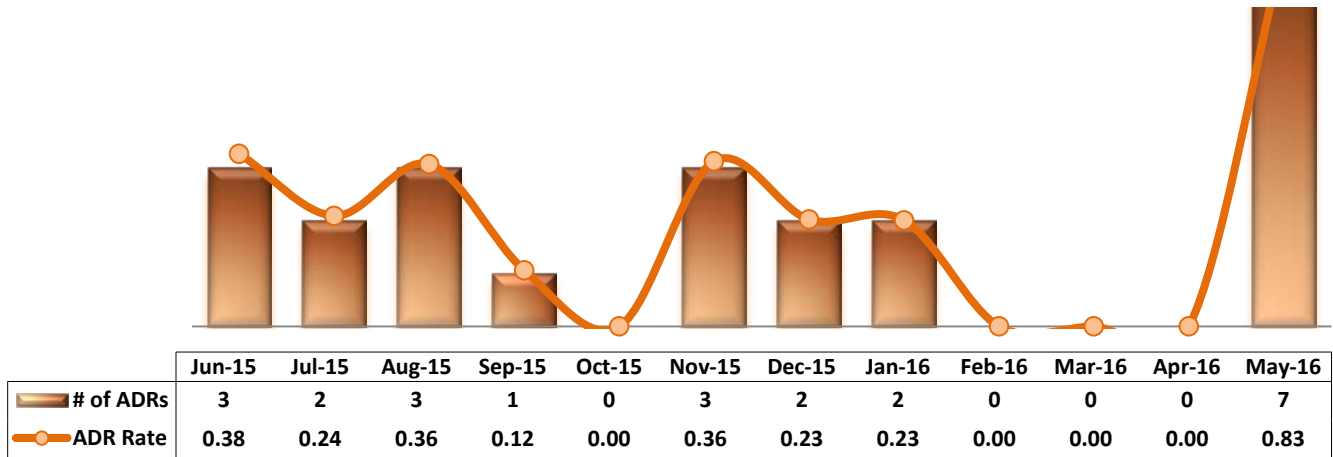
- There were 26 Medication Variance events in May, which was more than any other month this year and the second highest total in the last 12 months.
- The seven reported Adverse Drug Reactions (ADRs) were the most recorded incidents since May 2014.
- The total STAT (emergency medication) events (65) in May 2016 noticeably decreased from April's reported total of 80 and continued to follow a seesaw pattern since the start of the fiscal year. Each and every month the statistic has changed direction, going down, up, then down again.
- The highest number of STAT orders for a single IIC in May was 15, which was experienced by two patients.

18. Reported Medication Variance Events



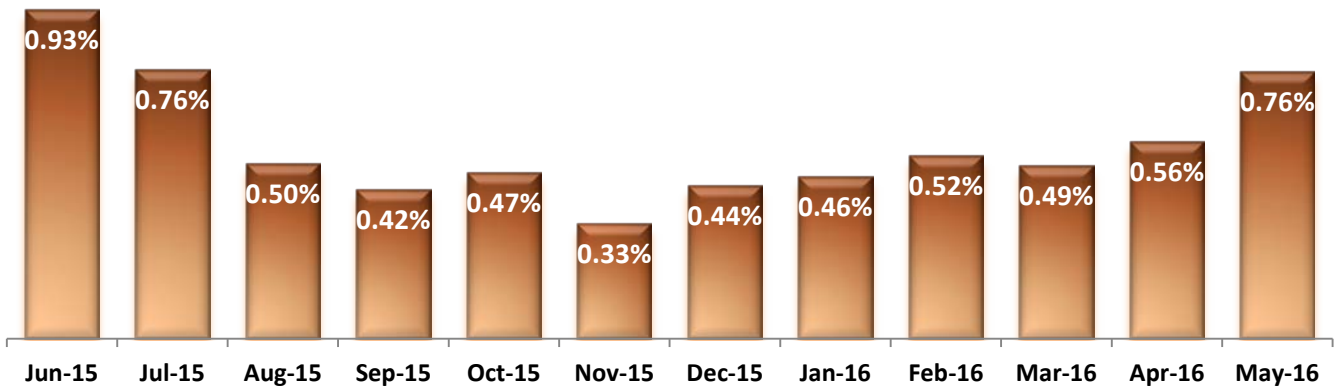
* MV Rate: Number of reported medication variance events that occurred for every 1000 inpatient days.

19. Reported Adverse Drug Reactions

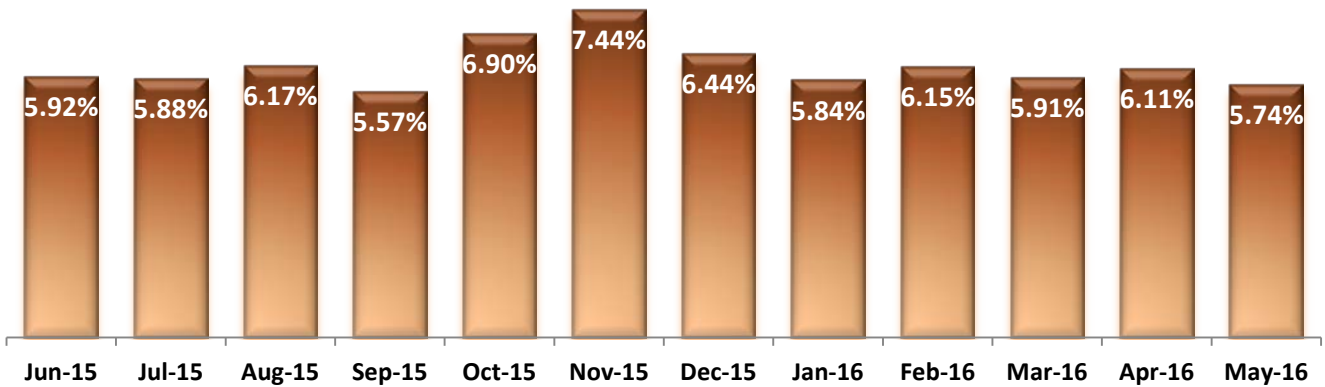


* ADR Rate: Number of reported adverse drug reaction events that occurred for every 1000 inpatient days.

20. Percent of Missing Documentation on Med-Administration

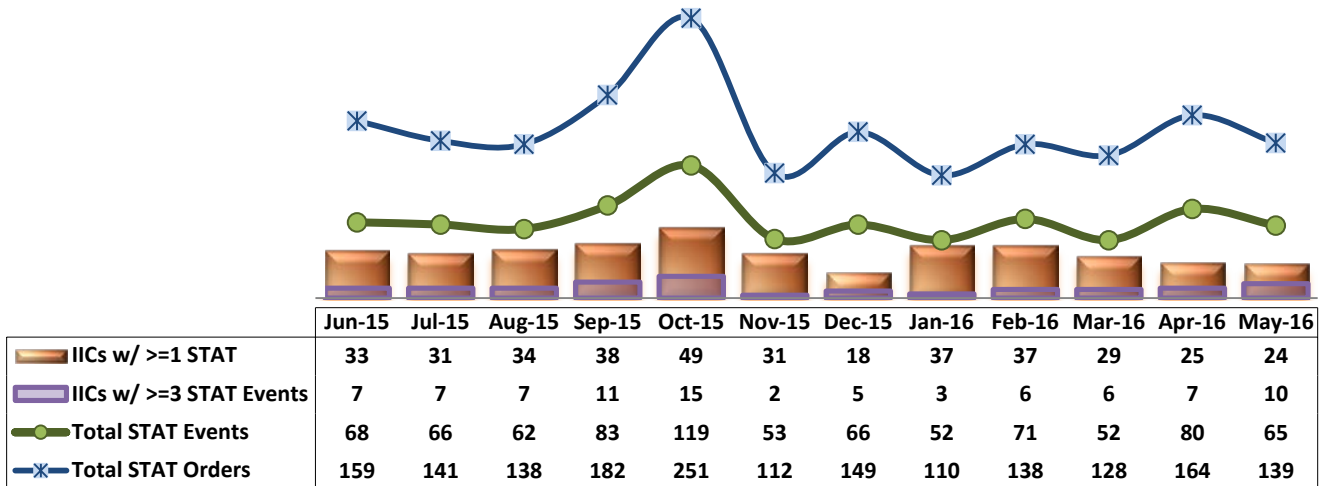


21. Medication Refusal Rate*



* Medication Refusal Rate: the number of refused medication doses divided by the total number of doses scheduled for administration.

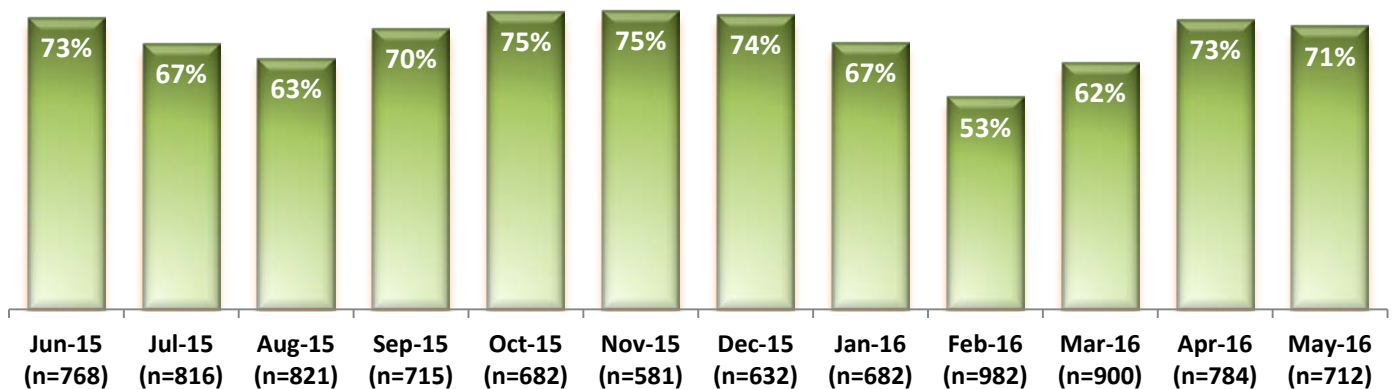
22. Number of STAT Events and Individuals Involved



Key Trends: Environment of Care (23)

- SiteFm workers completed 71% of their orders within 3 days during the month of May. Over the last 12 months the average completed orders within 3 days was 68%.
- The number of work order requests has been declining since February. Since then, requests have declined 27% falling from 982 to 712 in May.

23. Percentage of SiteFM Work Orders Completed within 3 Days

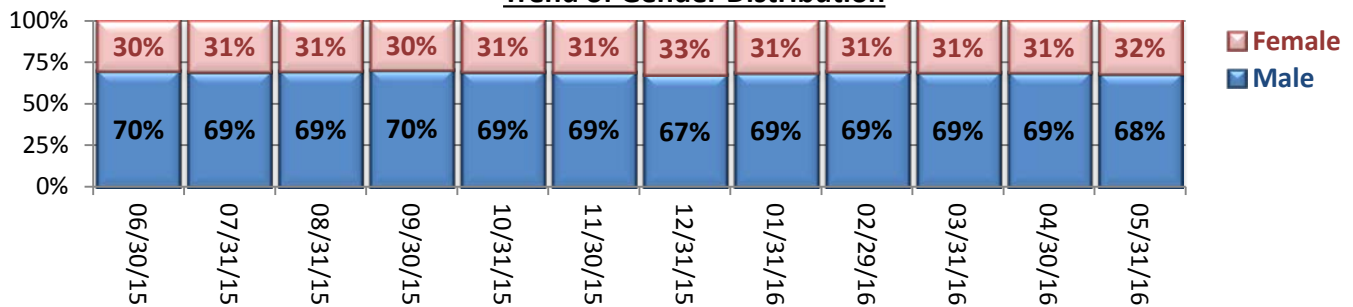


Key Trends: Demographics, Legal Status, and Length of Stay (24-25)

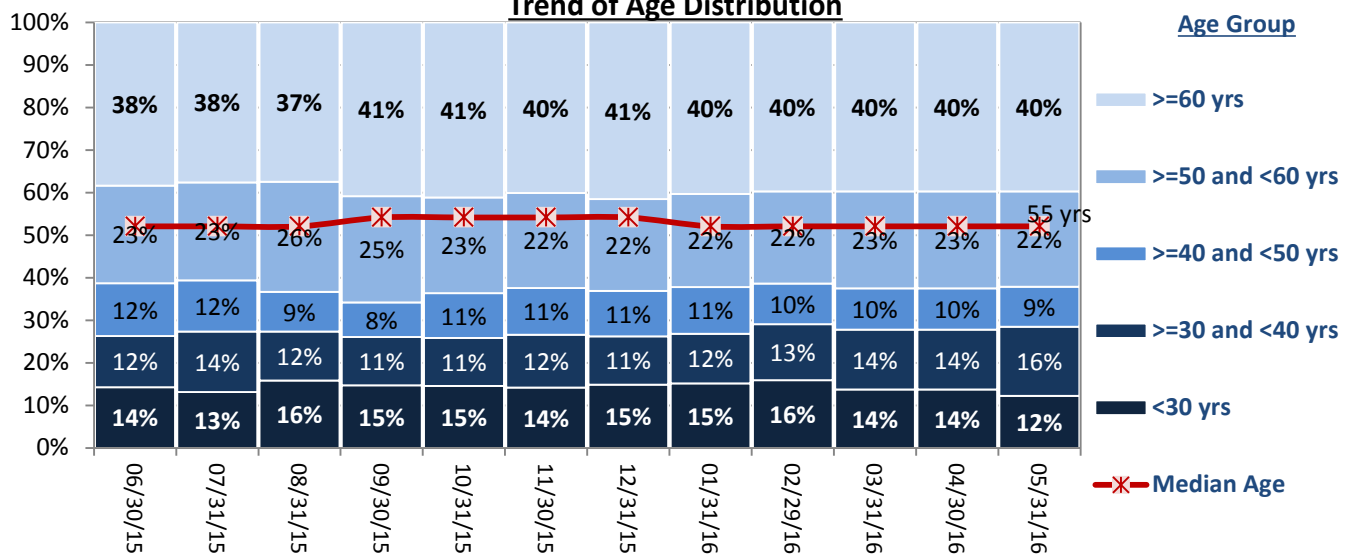
- The percentage of male individuals remaining in the Hospital has been below 70% since the start of the fiscal year in October 2015.
- The proportion of individuals between 30 and 39 years old continued to increase in May 2016 and has been doing so almost steadily from December 2015. At the same time, the proportion of those under 30 years of age has been decreasing by relatively the same margins.
- There has been little change on a month-to-month basis in regards to grouping individuals by legal status for the last 12 months. However, since June 2015, the forensic Pre-trial population has risen by 5% while both Post-trial and Civil groups have decreased by 3%.
- The largest group, by far, of individual in care by length of stay are those who have been in care between 1 and 2 years. In May 2016, they accounted for 31% of the total individuals at the Hospital and have been as high as 38% over the last year.
- The average Length of Stay(LOS) was nearly 6.5 years in May while the median LOS was just 1.3 years, indicating that there is a large proportion of individuals whose LOS is well above the mean.
- The LOS for each legal status category has been on a relatively upward sloping trend. The Pre-trial individuals group has increased the most, rising 28% since June 2015.

24. Demographics

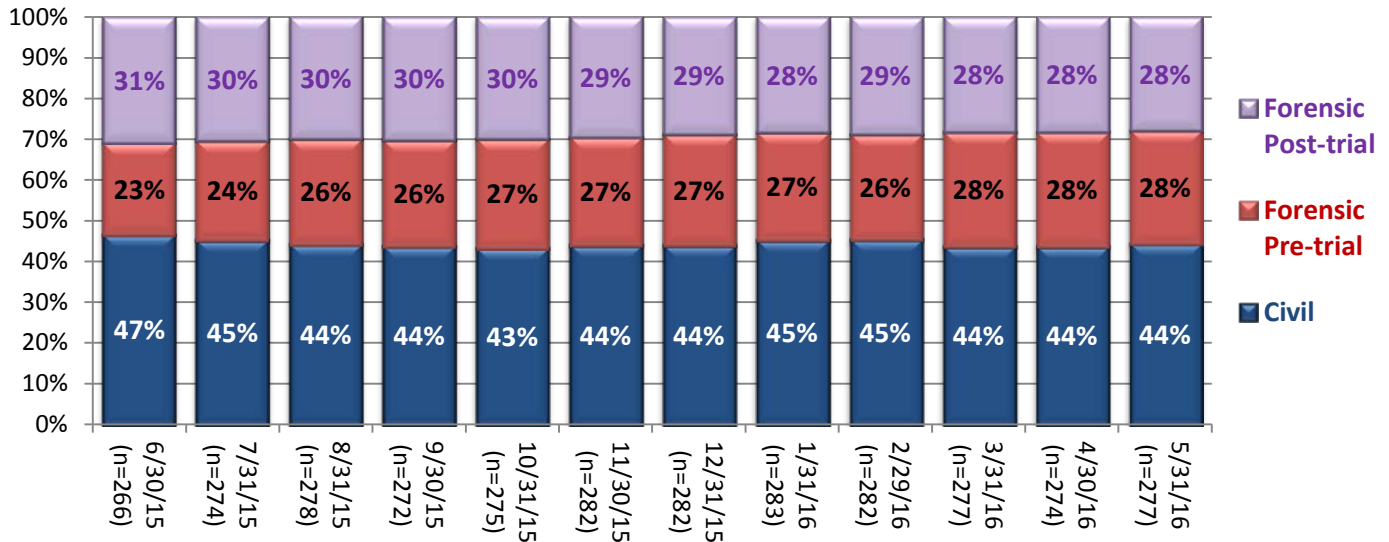
Trend of Gender Distribution



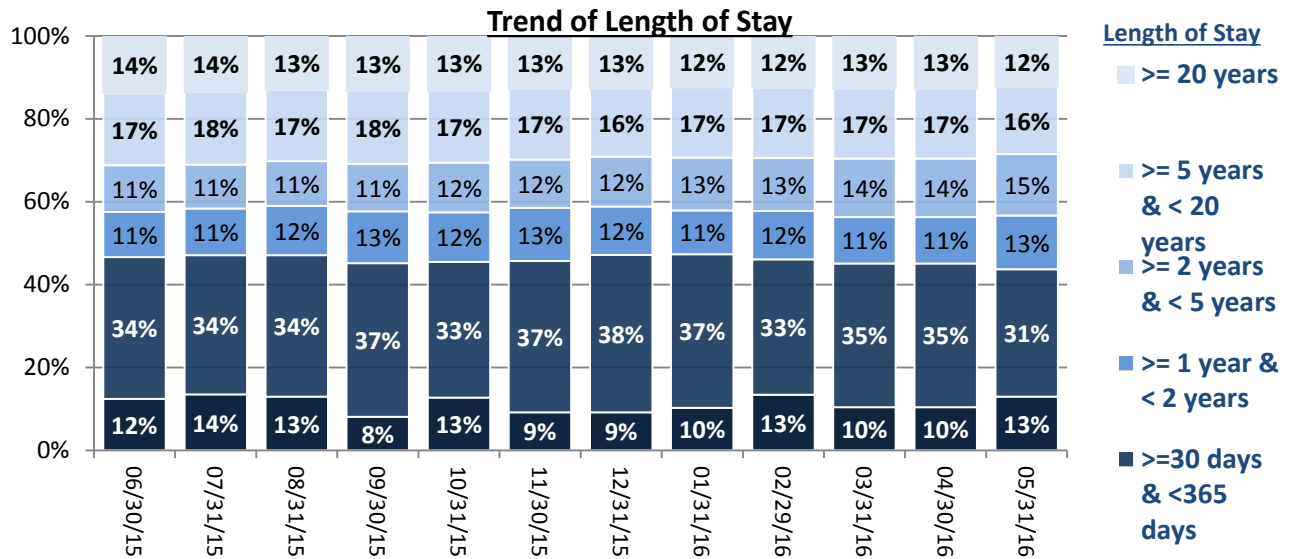
Trend of Age Distribution



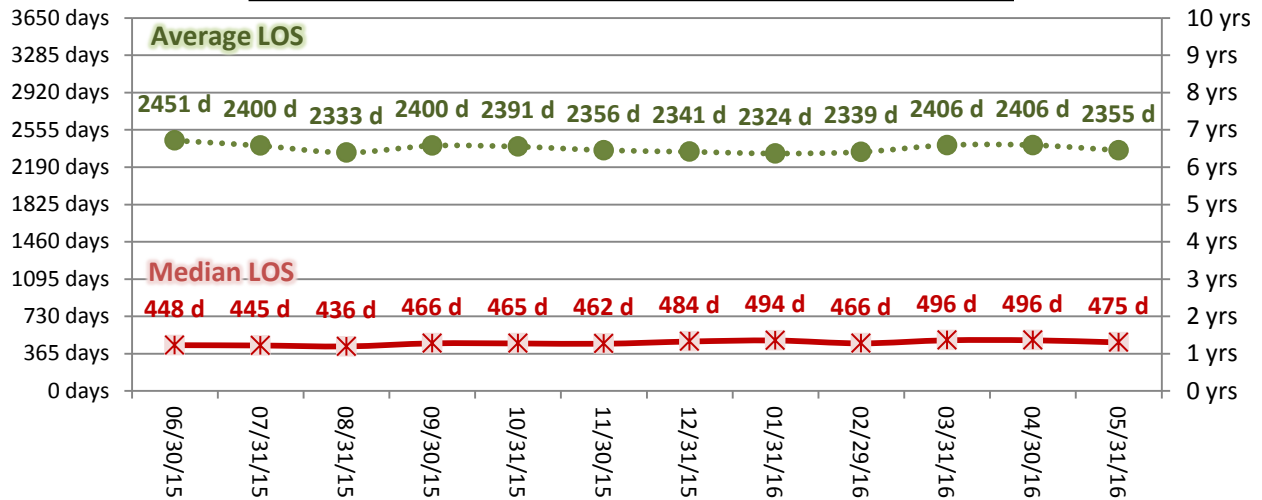
Trend of Legal Status Distribution

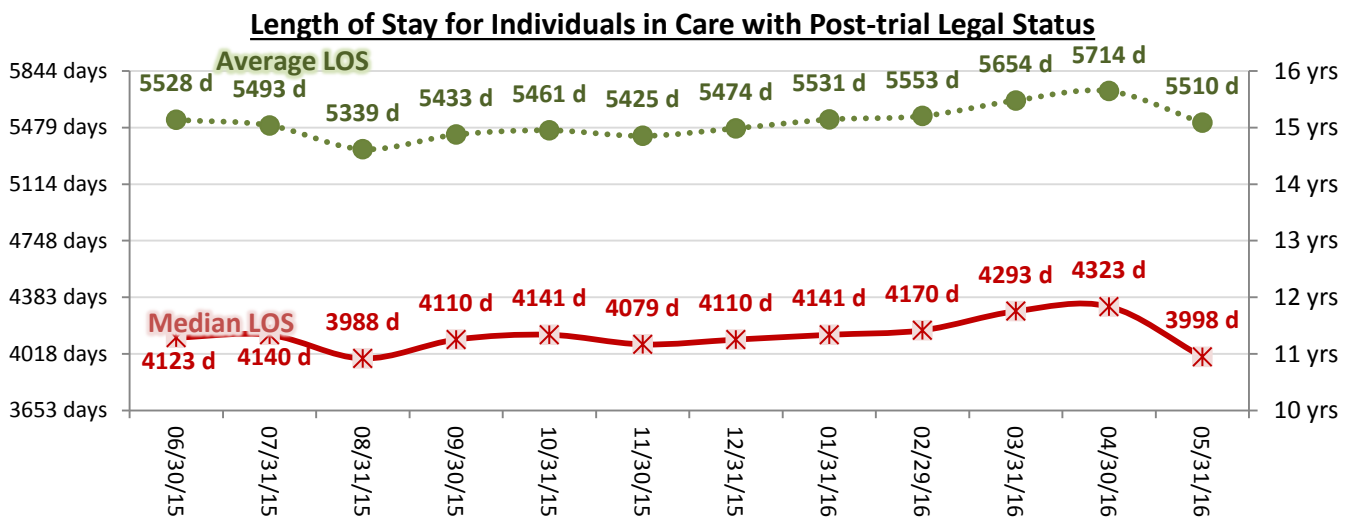
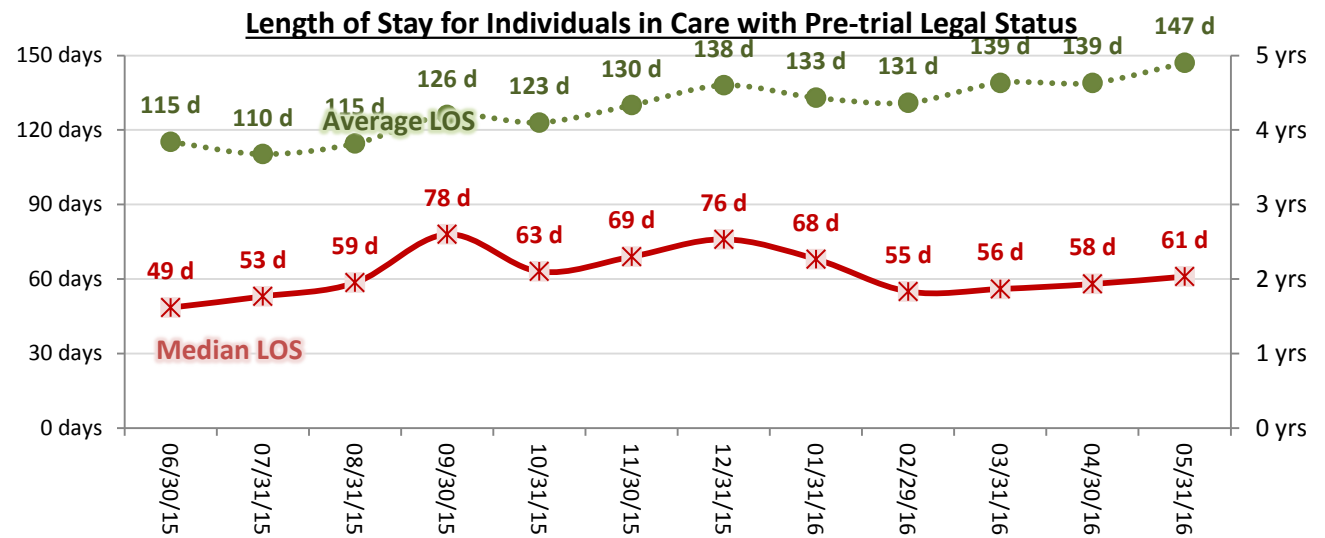
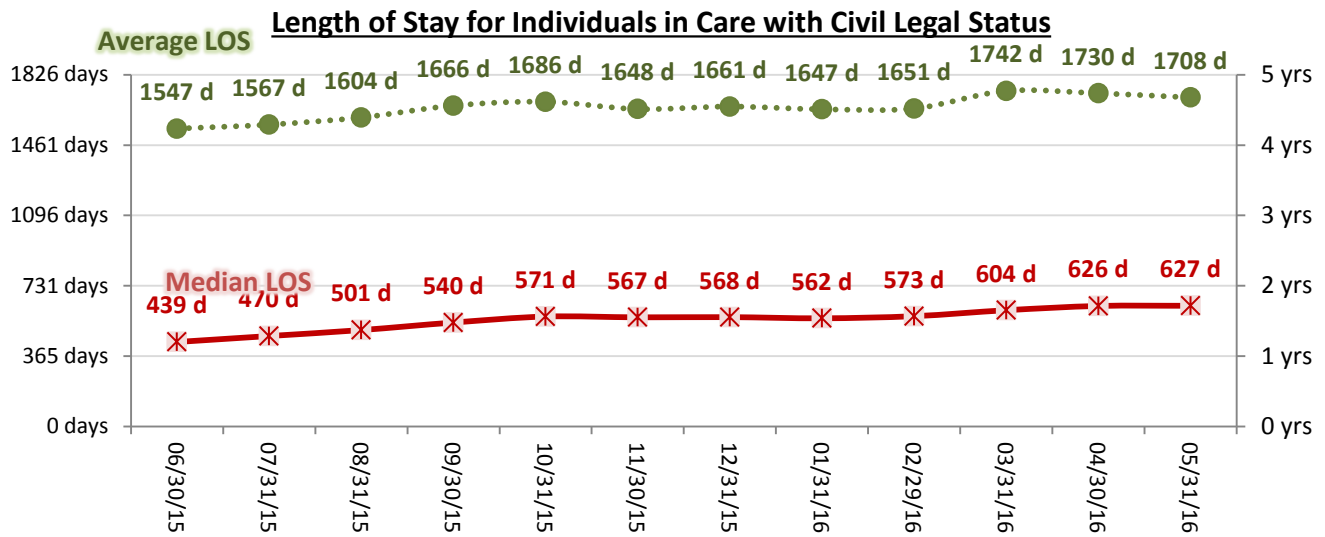


25. Length of Stay



Average and Median Length of Stay for Individuals in Care





Performance Related Information for Staff & Managers

1. Census, Admissions, Discharges & Transfers

Data Source: Avatar

Updated as of 06/01/16

Category	Jun-15	Jul-15	Aug-15	Sep-15	Oct-15	Nov-15	Dec-15	Jan-16	Feb-16	Mar-16	Apr-16	May-16	Monthly Average	Total (12mths)	Figure	
Admissions	Civil	15	15	14	13	16	11	9	6	12	6	9	11	11	137	Figure 1
	Pre-trial	20	25	22	14	25	16	17	25	25	23	25	24	22	261	
	Post-trial	1	1	2	0	1	1	3	2	2	1	1	3	2	18	
	Total	36	41	38	27	42	28	29	33	39	30	35	38	35	416	
Discharges	Civil	25	17	17	18	17	9	10	8	15	15	11	8	14	170	Figure 2
	Pre-trial	15	16	15	14	21	12	14	21	24	17	24	25	18	218	
	Post-trial	4	0	2	1	1	0	5	3	1	3	3	2	2	25	
	Total	44	33	34	33	39	21	29	32	40	35	38	35	34	413	
Net Increase During Month	Civil	-10	-2	-3	-5	-1	2	-1	-2	-3	-9	-2	3		-33	
	Pre-trial	5	9	7	0	4	4	3	4	1	6	1	-1		43	
	Post-trial	-3	1	0	-1	0	1	-2	-1	1	-2	-2	1		-7	
	Total	-8	8	4	-6	3	7	0	1	-1	-5	-3	3		3	
All Individuals on Roll at End of Month	266	274	278	272	275	282	282	283	282	277	274	277	277			
a. Present on Unit	264	271	275	267	268	278	277	282	273	271	267	274	272			
b. On AL	2	3	3	5	7	4	4	1	9	6	6	3	4			
c. On UL	0	0	0	0	0	0	1	0	0	0	1	0	0			
All Individuals on Roll: Daily Average during Month*	270	270	275	275	277	280	280	282	282	279	279	276	277			
a. Present on Unit	264	266	272	270	272	276	275	277	276	272	273	272	272			
b. On AL	6	4	3	5	5	4	4	4	6	7	6	4	3.8			
c. On UL	0	0	0	0	0	0	1	0	0	0	0	0	0.10			
Patient Days**	7925	8247	8435	8114	8439	8277	8537	8599	8009	8436	8200	8437	8305	99655		
Inter-Unit Transfers during Month	14	14	6	13	20	11	9	10	9	6	14	11	11	137	Figure 4	
Medical Leaves Initiated during Month	Emergency	20	15	10	13	8	10	13	15	18	12	10	12	13	156	
	Non-Emer	96	95	89	69	86	72	72	54	68	66	66	46	73	879	
	Total	116	110	99	82	94	82	85	69	86	78	76	58	86	1035	
Non-Medical Leaves Initiated during Month	323	374	322	290	356	341	390	298	364	389	316	284	337	4047		
UL Initiated during Month	1	1	0	0	0	0	1	0	1	1	2	1	1	8		
Total Unique Patients Served during Month	305	305	311	302	312	302	308	312	320	310	312	312	309			
30 Day Readmission***	Civil	2	1	1	1	1	1	1	0	1	1		1	11		
	Pre-trial	0	0	0	0	0	0	0	1	0	0		0	1		
	Post-trial	0	0	0	0	0	0	0	1	0	0		0	1		
	Total	2	1	1	1	1	1	1	3	0	1	1	1	13		

* This is the average number of individuals served on a given day for the respective month. Due to rounding from average calculation, numbers from its subcategories a, b, & c may not add up to the total number on this row.

** It counts the number of patients who are present on the unit and excludes those on authorized or unauthorized leave at 11:59pm on a given day.

*** Number of patients returning within 30 days of discharges that occurred during month.

Performance Related Information for Staff & Managers

2. Key Performance Indicators

Data Source: UI DB, MV DB, ADR DB, Restraint/Seclusion Log, and Avatar

Updated as of 06/01/16

Category	Jun-15	Jul-15	Aug-15	Sep-15	Oct-15	Nov-15	Dec-15	Jan-16	Feb-16	Mar-16	Apr-16	May-16	Monthly Average	NPR* (Jun-13)	Figure
30 Day Readmit (Discharge Cohort)**	Civil	8.0%	5.9%	5.9%	5.6%	5.9%	11.1%	10.0%	12.5%	0.0%	6.7%	9.1%	7.1%		Figure 5
	Pre-trial	0.0%	0.0%	0.0%	0.0%	0.0%	0.0%	0.0%	4.8%	0.0%	0.0%	0.0%	0.5%		
	Post-trial	0.0%	N/A	0.0%	0.0%	0.0%	N/A	0.0%	33.3%	0.0%	0.0%	0.0%	4.4%		
	Combined	4.5%	3.0%	2.9%	3.0%	2.6%	4.8%	3.4%	9.4%	0.0%	2.9%	2.6%	3.4%	6.9%	
Number of Unusual Incidents*	220	231	202	222	254	155	144	184	187	189	196	199	199		Figure 6
Patient Unusual Incident Rate	26.0	26.8	22.2	25.3	28.9	17.9	15.9	19.8	21.7	21.1	23.2	23.0	22.6		Figure 7
UI by Severity	Catastrophe	0	0	0	0	0	0	0	0	0	0	0	0		Figure 9
	High	27	22	22	37	42	20	29	25	28	25	30	27		
	Medium	73	79	65	84	100	31	43	42	52	49	55	60		
	Low	120	130	115	101	112	104	86	113	110	112	116	118		
Physical Assault Incident Rate	6.2	5.8	5.3	7.6	8.8	5.6	4.5	5.3	5.4	5.2	7.3	5.6	6.0		
Selected Types of Incidents	Physical Assault	49	48	45	62	74	46	38	46	43	44	60	47	50	Figure 10
	Aggressive Behav.	61	83	75	83	103	52	50	67	69	66	69	74	71	
	Psych Emergency	25	39	28	59	55	22	7	19	20	19	27	31	29	
	Fall	28	31	33	23	25	25	22	26	24	25	33	31	27	
	Injury	24	36	31	39	45	23	14	31	34	25	32	30	30	
Physical Assaults by Severity	High	10	5	4	9	20	7	3	8	11	8	9	9	13	Figure 11
	Medium	21	12	19	25	36	11	8	15	17	15	22	15	18	
	Low	18	31	22	28	18	28	27	23	15	21	29	23	24	
Patient Injury Rate***	0.13	0.12	0.36	0.37	0.12	0.36	0.12	0.00	0.12	0.24	0.24	0.12	0.19	0.38	
Patients with Major Injuries***	1	1	3	3	1	3	1	0	1	2	2	1	2		Figure 12
Total Patients Injured***	17	26	20	32	34	15	9	25	23	12	24	18	21		
Total Staff Injured***	12	8	10	10	23	10	6	8	21	12	10	11	12		Figure 13
Patient Fall Rate	3.15	3.64	3.79	2.71	3.08	3.02	2.34	3.14	3.00	2.84	4.02	3.32	3.17		Figure 14
Total Patients who Fell	25	30	32	22	26	25	20	27	24	24	33	28	26		
Total Staff who Fell	3	1	2	2	4	0	3	0	4	2	1	3	2		
Percent of Patients Restrained	8.2%	6.9%	5.8%	7.9%	10.9%	5.6%	6.2%	7.7%	8.1%	11.6%	10.6%	7.1%	1.4%	5.8%	Figure 15
Percent of Patients Secluded	3.3%	2.0%	4.8%	4.3%	5.1%	4.0%	3.2%	5.1%	4.1%	3.5%	4.2%	4.2%	4.0%	2.4%	
Restraint Hours Rate	0.074	0.163	0.008	0.031	0.086	0.052	0.032	0.038	0.123	0.142	0.207	0.104	0.088	0.71	Figure 16
Seclusion Hours Rate	0.150	0.067	0.062	0.260	0.281	0.043	0.047	0.099	0.136	0.093	0.196	0.137	0.130	0.44	Figure 16
Elopement Rate	0.13	0.12	0.00	0.00	0.00	0.00	0.12	0.00	0.12	0.12	0.24	0.12	0.09	0.13	Figure 17
Medication Variance Rate	1.51	2.06	1.42	1.73	4.27	2.90	4.22	2.33	1.62	1.66	2.93	3.08	2.49		Figure 18
Adverse Drug Reaction Rate	0.38	0.24	0.36	0.12	0.00	0.36	0.23	0.23	0.00	0.00	0.00	0.83	0.23		Figure 19
Missing Med-Admin Documentation	0.93%	0.76%	0.50%	0.42%	0.47%	0.33%	0.44%	0.46%	0.52%	0.49%	0.56%	0.76%	0.55%		Figure 20
Percent of Medication Refusal	5.92%	5.88%	6.17%	5.57%	6.90%	7.44%	6.44%	5.84%	6.15%	5.91%	6.11%	5.74%	6.17%		Figure 21
SiteFM Work Orders Completed within 3 days	73%	67%	63%	70%	75%	75%	74%	67%	53%	62%	73%	71%	68%		Figure 23
Total SiteFM Work Orders	561	543	515	503	509	435	466	456	522	557	569	505	512		
Total SiteFM Work Orders	768	816	821	715	682	581	632	682	982	900	784	712	756		

* National Public Rate, NASMHPD Research Institute, National Research Institute (NRI), Data as of June 2013, Published in November 2013.

** Percentage of patients returning within 30 days of discharges that occurred during month

*** Refer to the next page [UI & Medication]

Performance Related Information for Staff & Managers

3. Unusual Incident & Medication

Data Source: UI DB, MV DB, ADR DB, and Avatar

Updated as of 06/01/16

Category		Jun-15	Jul-15	Aug-15	Sep-15	Oct-15	Nov-15	Dec-15	Jan-16	Feb-16	Mar-16	Apr-16	May-16	Monthly Average	Total (12mths)	NPR* (Jun-13)
Unusual Incidents (excluding MV)**	Total UIs	220	231	202	222	254	155	144	184	187	189	196	199	199	2383	
	Major UIs Only	130	126	115	141	154	91	95	115	110	114	114	108	118	1413	
	Pt Involved UI Only	206	221	187	205	244	148	136	170	174	178	190	194	188	2253	
	Patient UI Rate	26.0	26.8	22.2	25.3	28.9	17.9	15.9	19.8	21.7	21.1	23.2	23.0		22.6	
	Unique Pts Involved in UI	104	132	111	117	127	112	105	110	117	122	123	112	116	1392	
Selected Types of Incidents	Physical Assault	49	48	45	62	74	46	38	46	43	44	60	47	50	602	
	Aggressive Behavior	61	83	75	83	103	52	50	67	69	66	69	74	71	852	
	Psych Emergency	25	39	28	59	55	22	7	19	20	19	27	31	29	351	
	Fall	28	31	33	23	25	25	22	26	24	25	33	31	27	326	
	Injury	24	36	31	39	45	23	14	31	34	25	32	30	30	364	
	Physical Assault Rate	6.2	5.8	5.3	7.6	8.8	5.6	4.5	5.3	5.4	5.2	7.3	5.6		6.0	
UI by Severity	Catastrophe	0	0	0	0	0	0	0	0	0	0	0	0	0	0	
	High	27	22	22	37	42	20	15	29	25	28	25	30	27	322	
	Medium	73	79	65	84	100	31	43	42	52	49	55	51	60	724	
	Low	120	130	115	101	112	104	86	113	110	112	116	118	111	1337	
Physical Assaults by Severity	High	10	5	4	9	20	7	3	8	11	8	9	9	13	103	
	Medium	21	12	19	25	36	11	8	15	17	15	22	15	18	216	
	Low	18	31	22	28	18	28	27	23	15	21	29	23	24	283	
	Total Patients who Fell	25	30	32	22	26	25	20	27	24	24	33	28	26	316	
	Patient Fall Rate	3.15	3.64	3.79	2.71	3.08	3.02	2.34	3.14	3.00	2.84	4.02	3.32		3.17	
	Total Staff who Fell	3	1	2	2	4	0	3	0	4	2	1	3	2	25	
	Total Patients Injured***	17	26	20	32	34	15	9	25	23	12	24	18	21	255	
	Patients with Major Injuries***	1	1	3	3	1	3	1	0	1	2	2	1	2	19	
	Patient Injury Rate***	0.13	0.12	0.36	0.37	0.12	0.36	0.12	0.00	0.12	0.24	0.24	0.12		0.19	0.38
	Total Staff Injured**	12	8	10	10	23	10	6	8	21	12	10	11	12		
	Total UIs Documented in Avatar	1	1	0	0	0	0	1	0	1	1	2	1	1	9	
	Elopement Rate	0.13	0.12	0.00	0.00	0.00	0.00	0.12	0.00	0.12	0.12	0.24	0.12		0.09	0.13
	Med Variance (MV) Reports**	12	17	12	14	36	24	36	20	13	14	24	26	21	248	
	MV Rate	1.51	2.06	1.42	1.73	4.27	2.90	4.22	2.33	1.62	1.66	2.93	3.08		2.49	
	Adverse Drug Reactions Reports	3	2	3	1	0	3	2	2	0	0	0	7	2	23	
	ADR Rate	0.38	0.24	0.36	0.12	0.00	0.36	0.23	0.23	0.00	0.00	0.00	0.83		0.23	
	Total Med Administrations Scheduled	98847	101726	104695	99956	105811	102613	105331	111076	103422	108400	105969	109074		1256920	
	Total Missing Documentations	923	777	522	423	500	336	459	513	539	533	593	827		6945	
	Percent of Missing Documentation	0.93%	0.76%	0.50%	0.42%	0.47%	0.33%	0.44%	0.46%	0.52%	0.49%	0.56%	0.76%		0.55%	
	Total Medication Doses Refused	5856	5977	6463	5572	7303	7635	6788	6487	6356	6403	6480	6260		77580	
	Percent of Medication Refusal	5.92%	5.88%	6.17%	5.57%	6.90%	7.44%	6.44%	5.84%	6.15%	5.91%	6.11%	5.74%		6.17%	
	Total STAT Orders	159	141	138	182	251	112	149	110	138	128	164	139	151		Figure 22
	Total STAT Events****	68	66	62	83	119	53	66	52	71	52	80	65	70		
	Total Individuals Involved 1+ STAT	33	31	34	38	49	31	18	37	37	29	25	24	32		
	Total Patients with 3+ STAT Events	7	7	7	11	15	2	5	3	6	6	7	10	7		

* National Public Rate, NASMHPD Research Institute, National Research Institute (NRI), Data as of June 2013, Published in November 2013.

** Numbers may change if any additional UI report is made after the data run date from UI database (around the 15th of the following month); According to the revised UI policy as of November 4, 2013, a medication variance (MV) incident became no longer considered to be an unusual incident, and a medication or vital sign refusal incident is not longer an UI as of May 2014. UI data for the past 12 months in this report has been updated to reflect this change and reanalyzed in order to show the UI trend in consistent logic.

*** Injury is broadly defined to include any type of injuries regardless of the cause or severity level. The total number of patients injured represents all of the reported injuries including minor injuries treated with first aid alone. However, the patient injury rate considers only the number of patient injuries that required beyond first-aid level treatment based on the NRI definition and the patient injury rate is the number of 'major' patient injuries per every 1000 inpatient days

**** One STAT event may involve more than one STAT order for the same patient. Any orders placed within 20 minute timeframe are considered to belong to one STAT event.

Performance Related Information for Staff & Managers

4. Restraint & Seclusion

Data Source: Restraint/Seclusion Log and UI DB (for # of total events and patients) and Avatar (for patient days/hours)

Updated as of 06/01/16

Category		Jun-15	Jul-15	Aug-15	Sep-15	Oct-15	Nov-15	Dec-15	Jan-16	Feb-16	Mar-16	Apr-16	May-16	Monthly Average	Total (12mths)	NPR* (Jun-13)
Number of Restraint Events	Mechanical	5	15	1	3	8	1	3	4	10	10	10	7	6.4	77	
	Physical Hold	35	26	27	38	67	21	20	34	37	36	36	28	33.8		
	Total	40	41	28	41	75	22	23	38	47	46	46	35	40.2		
Number of Unique Patients Restrained	Mechanical	5	4	1	2	6	1	1	3	6	9	9	5	4.3		
	Physical Hold	20	17	17	22	28	16	18	21	20	27	24	17	20.6		
	Total	25	21	18	24	34	17	19	24	26	36	33	22	24.9		
Percentage of Patients Restrained**	Mechanical	1.6%	1.3%	0.3%	0.7%	1.9%	0.3%	0.3%	1.0%	1.9%	2.9%	2.9%	1.6%	1.4%		
	Physical Hold	6.6%	5.6%	5.5%	7.3%	9.0%	5.3%	5.8%	6.7%	6.3%	8.7%	7.7%	5.4%	6.7%		
	Total	8.2%	6.9%	5.8%	7.9%	10.9%	5.6%	6.2%	7.7%	8.1%	11.6%	10.6%	7.1%	8.0%		5.8%
Total Restraint Hours (h:mm)**	Mechanical	13:22	31:37	0:05	2:45	10:48	8:35	4:55	5:17	19:50	26:37	38:36	17:15	14:58	179:42	
	Physical Hold	0:47	0:37	1:36	3:22	6:35	1:42	1:35	2:36	3:43	2:08	2:11	3:47	2:33	6 mths	
	Total	14:09	32:14	1:41	6:07	17:23	10:17	6:30	7:53	23:33	28:45	40:47	21:02	17:31	6 mths	
Restraint Hours Rate**	Mechanical	0.070	0.160	0.000	0.014	0.053	0.043	0.024	0.026	0.103	0.131	0.196	0.085	0.075	12 mths	
	Physical Hold	0.004	0.003	0.008	0.017	0.033	0.009	0.008	0.013	0.019	0.011	0.011	0.019	0.013	6 mths	
	Total	0.074	0.163	0.008	0.031	0.086	0.052	0.032	0.038	0.123	0.142	0.207	0.104	0.088	6 mths	0.71
Number of Seclusion Events		21	14	18	37	40	13	12	22	17	16	22	21	21.1	253	
Number of Unique Patients Secluded		10	6	15	13	16	12	10	16	13	11	13	13	12.3		
Percentage of Patients Secluded		3.3%	2.0%	4.8%	4.3%	5.1%	4.0%	3.2%	5.1%	4.1%	3.5%	4.2%	4.2%	4.0%		2.4%
Total Seclusion Hours (h:mm)		28:28	13:18	12:36	50:35	56:52	8:33	9:38	20:22	26:08	18:52	38:38	27:49	25:59	311:49	
Seclusion Hours Rate		0.150	0.067	0.062	0.260	0.281	0.043	0.047	0.099	0.136	0.093	0.196	0.137		0.130	0.44

* National Public Rate, NASMHPD Research Institute, National Research Institute (NRI), Data as of June 2013, Published in November 2013.

** Restraint data prior to April 2015 includes only mechanical restraints. The Hospital's restraint policy has been revised to consider a physical hold a restraint and data as of April 2015 reflects this change. The duration of each physical hold event is counted as one (1) minute as a physical hold is ordered/used only as a temporary intervention that lasts less than a minute to break up any physical altercations or to administer emergency medications.

Performance Related Information for Staff & Managers

5. Major Unusual Incidents by Incident Location/Unit

Data Source: UI DB

Updated as of 06/01/16

Category		Jun-15	Jul-15	Aug-15	Sep-15	Oct-15	Nov-15	Dec-15	Jan-16	Feb-16	Mar-16	Apr-16	May-16	Monthly Average	Total (12mths)	Percent
Total Unusual Incidents		220	231	202	222	254	155	144	184	187	189	196	199	199	2383	100%
Incident Location	1A	18	8	8	16	6	6	13	9	11	8	7	8	10	118	5%
	1B	7	15	21	19	18	21	20	7	12	12	18	14	15	184	8%
	1C	22	8	19	12	15	12	14	13	14	16	14	32	16	191	8%
	1D	18	37	17	22	24	11	11	30	30	21	27	30	23	278	12%
	1E	14	27	15	29	21	9	6	14	8	10	5	7	14	165	7%
	1F	28	18	17	30	46	16	15	14	16	18	32	16	22	266	11%
	1G	14	21	21	12	17	13	15	20	13	14	26	12	17	198	8%
	2A	5	14	4	14	11	0	8	10	4	3	4	9	7	86	4%
	2B	3	5	3	4	1	4	2	3	9	8	6	6	5	54	2%
	2C	20	24	14	15	35	17	12	12	23	27	18	14	19	231	10%
	2D	24	23	23	14	27	16	7	20	12	14	14	18	18	212	9%
	TLC	32	14	18	17	26	23	8	19	17	22	13	21	19	230	10%
	Other	15	17	22	18	7	7	13	13	18	16	12	12	14	170	7%
Physical Assault		49	48	45	62	74	46	38	46	43	44	60	47	50	602	100%
Incident Location	1A	4	3	1	2	0	2	6	1	0	3	1	1	2	24	4%
	1B	0	0	3	1	1	5	3	0	0	2	4	2	2	21	3%
	1C	4	2	8	4	4	5	3	6	1	6	4	8	5	55	9%
	1D	3	9	2	6	9	3	3	7	14	7	10	7	7	80	13%
	1E	5	6	4	10	4	2	1	5	1	1	0	6	4	45	7%
	1F	14	8	4	17	28	5	6	6	3	5	15	2	9	113	19%
	1G	6	5	7	6	4	1	4	4	2	2	11	3	5	55	9%
	2A	0	1	0	2	1	0	0	1	1	0	1	1	1	8	1%
	2B	0	0	0	0	0	0	6	1	1	1	0	0	1	9	1%
	2C	3	6	3	4	11	9	2	8	8	4	5	4	6	67	11%
	2D	4	6	10	4	7	5	2	4	5	2	6	8	5	63	10%
	TLC - Intensive	5	2	3	2	5	7	1	1	6	5	3	4	4	44	7%
	TLC - Transitional	0	0	0	2	0	2	1	2	1	3	0	1	1	12	2%
	Other	1	0	0	2	0	0	0	0	0	3	0	0	1	6	1%

Performance Related Information for Staff & Managers

5. Major Unusual Incidents by Incident Location/Unit

Data Source: UI DB

Updated as of 06/01/16

Category		Jun-15	Jul-15	Aug-15	Sep-15	Oct-15	Nov-15	Dec-15	Jan-16	Feb-16	Mar-16	Apr-16	May-16	Monthly Average	Total (12mths)	Percent
Aggressive Behavior		61	83	75	83	103	52	50	67	69	66	69	74	71	852	142%
Incident Location	1A	2	1	1	1	4	1	4	0	4	1	1	0	2	20	3%
	1B	0	2	9	7	2	5	4	2	4	0	1	2	3	38	6%
	1C	9	3	7	3	4	5	9	3	8	8	9	14	7	82	14%
	1D	11	14	6	11	10	4	6	18	13	10	14	19	11	136	23%
	1E	5	11	6	14	15	4	3	5	5	1	1	1	6	71	12%
	1F	6	5	4	9	12	4	6	3	6	9	12	6	7	82	14%
	1G	3	10	11	3	8	6	5	8	5	4	5	3	6	71	12%
	2A	2	11	3	10	7	0	3	3	2	0	2	4	4	47	8%
	2B	0	1	0	0	0	0	0	2	2	1	0	3	1	9	1%
	2C	7	6	5	6	17	2	1	7	8	18	12	7	8	96	16%
	2D	5	12	10	8	15	7	3	10	2	6	4	6	7	88	15%
	TLC - Intensive	6	1	3	4	5	8	2	0	5	4	3	0	3	41	7%
	TLC - Transitional	4	4	3	4	2	4	1	4	0	4	3	7	3	40	7%
	Other	1	2	7	3	2	2	3	2	5	0	2	2	3	31	5%
Psych Emergency		25	39	28	59	55	22	7	19	20	19	27	31	29	351	58%
Incident Location	1A	0	1	0	0	1	0	0	0	0	0	0	0	0	2	0%
	1B	0	2	5	4	3	1	0	0	0	0	0	0	1	15	2%
	1C	2	4	2	2	2	2	1	2	0	3	2	7	2	29	5%
	1D	5	9	3	9	12	7	3	10	12	7	4	8	7	89	15%
	1E	5	7	3	15	7	1	1	2	0	1	0	3	4	45	7%
	1F	9	3	3	14	13	3	0	2	3	2	15	2	6	69	11%
	1G	1	5	3	3	2	2	1	1	1	1	1	0	2	21	3%
	2A	1	4	1	5	5	0	0	0	0	0	0	0	1	16	3%
	2B	0	0	0	0	0	0	0	1	0	0	0	1	0	2	0%
	2C	0	0	2	3	5	2	1	1	2	4	3	1	2	24	4%
	2D	2	1	2	1	2	2	0	0	0	0	0	4	1	14	2%
	TLC - Intensive	0	2	1	1	2	1	0	0	1	0	1	2	1	11	2%
	TLC - Transitional	0	1	1	0	1	1	0	0	0	1	1	2	1	8	1%
	Other	0	0	2	2	0	0	0	0	1	0	0	1	1	6	1%

Performance Related Information for Staff & Managers

5. Major Unusual Incidents by Incident Location/Unit

Data Source: UI DB

Updated as of 06/01/16

Category		Jun-15	Jul-15	Aug-15	Sep-15	Oct-15	Nov-15	Dec-15	Jan-16	Feb-16	Mar-16	Apr-16	May-16	Monthly Average	Total (12mths)	Percent
Fall		28	31	33	23	25	25	22	26	24	25	33	31	27	326	100%
Incident Location	1A	8	3	3	9	1	2	3	2	3	3	4	2	4	43	13%
	1B	5	9	8	7	5	8	4	2	3	6	7	8	6	72	22%
	1C	0	0	0	1	1	1	1	1	1	0	0	2	1	8	2%
	1D	0	1	2	0	2	0	1	0	1	3	1	0	1	11	3%
	1E	2	2	3	1	2	2	0	4	1	3	3	3	2	26	8%
	1F	1	6	2	0	3	1	1	2	3	2	3	2	2	26	8%
	1G	4	1	4	0	1	2	5	7	1	1	4	5	3	35	11%
	2A	0	2	0	1	1	0	1	0	0	0	0	0	0	5	2%
	2B	1	1	3	0	0	1	0	0	4	0	3	3	1	16	5%
	2C	1	1	0	1	5	4	2	2	4	0	3	0	2	23	7%
	2D	3	1	2	1	0	0	2	3	1	2	2	2	2	19	6%
	TLC - Intensive	1	1	2	0	4	3	1	2	0	1	1	1	1	17	5%
	TLC - Transitional	0	1	1	0	0	1	1	1	0	1	0	0	1	6	2%
	Other	2	2	3	2	0	0	0	0	2	3	2	3	2	19	6%
Physical Injury		24	36	31	39	45	23	14	31	34	25	32	30	30	364	100%
Incident Location	1A	1	2	0	1	0	1	1	2	0	0	1	0	1	9	2%
	1B	0	0	3	3	1	2	1	1	3	0	4	2	2	20	5%
	1C	2	2	8	7	3	0	0	5	0	4	1	9	3	41	11%
	1D	3	6	4	4	9	3	2	5	8	6	5	4	5	59	16%
	1E	3	2	3	3	1	1	0	2	1	3	0	2	2	21	6%
	1F	6	5	3	9	17	5	2	5	3	1	10	2	6	68	19%
	1G	1	2	2	3	3	1	1	1	2	1	3	1	2	21	6%
	2A	0	1	0	1	1	0	0	0	0	0	0	0	0	3	1%
	2B	1	1	1	2	0	1	1	1	2	1	2	0	1	13	4%
	2C	2	3	0	3	5	4	3	1	5	1	3	0	3	30	8%
	2D	3	3	3	1	3	0	1	3	3	2	2	2	2	26	7%
	TLC - Intensive	1	5	0	1	2	4	0	3	3	3	1	2	2	25	7%
	TLC - Transitional	0	0	0	0	0	0	0	1	1	1	0	1	0	4	1%
	Other	1	4	4	1	0	1	2	1	3	2	0	5	2	24	7%

* Not every incident is a major incident. This counts only those incidents that were classified to be major based on the policy.

Performance Related Information for Staff & Managers

6A. Demographic Information of Individuals in Care

Data Source: Avatar

Updated as of 06/01/16

Category	Sub-group	Jun-15	Jul-15	Aug-15	Sep-15	Oct-15	Nov-15	Dec-15	Jan-16	Feb-16	Mar-16	Apr-16	May-16	Monthly Average	Percent*
Total Active (on Roll) at End of Month*		266	274	278	272	275	282	282	283	282	277	274	277	277	
Gender	Female	81	85	85	81	85	88	92	89	87	87	87	89	86	31.2%
	Male	185	189	193	191	190	194	190	194	195	190	187	188	191	68.8%
Age	Median Age (Years)	55 yrs	55 yrs	55 yrs	56 yrs	56 yrs	56 yrs	56 yrs	55 yrs	55 yrs	55 yrs	55 yrs	55 yrs	55 yrs	Figure 24
	<30 years old	38	36	44	40	40	40	42	43	45	38	33	34	39	14.2%
	>=30 and <40 years old	32	39	32	31	31	35	32	33	37	39	44	45	36	12.9%
	>=40 and <50 years old	33	33	26	22	29	31	30	31	27	27	28	26	29	10.3%
	>=50 and <60 years old	61	63	72	68	62	63	61	62	61	63	57	62	63	22.7%
	>=60 years old	102	103	104	111	113	113	117	114	112	110	112	110	110	39.8%
Legal Status of Individuals on Roll at End of Month	Emergency	32	32	25	25	24	23	26	15	20	17	16	20	23	8.3%
	Inpatient Commitment	34	33	33	32	28	30	31	35	35	34	34	34	33	11.8%
	Outpatient Commitment	22	22	28	25	27	30	26	34	31	29	31	30	28	10.1%
	Voluntary	36	37	37	37	40	41	41	44	42	41	39	39	40	14.3%
	Non-Protesting	0	0	0	0	0	0	0	0	0	0	0	0	0	0.0%
	Civil Sub-total	124	124	123	119	119	124	124	128	128	121	120	123	123	44.5%
	DC Exam	30	35	36	39	43	46	46	37	37	44	42	38	39	14.2%
	Mentally Incompetent	30	32	36	32	31	29	31	38	36	34	36	39	34	12.2%
	Forensic Pre-trial Sub-total	60	67	72	71	74	75	77	75	73	78	78	77	73	26.4%
	NGBRI - DC	69	70	71	70	70	71	68	67	68	66	65	66	68	24.7%
	NGBRI - US	9	9	8	8	8	8	8	8	7	7	6	6	8	2.8%
	NGBRI - VI	1	1	1	1	1	1	1	1	1	1	1	1	1	0.4%
	Dual Commitment	0	0	0	0	0	0	0	0	0	0	0	0	0	0.0%
	Post Trial Mental Exam PTME	0	0	0	0	0	0	1	1	2	1	1	1	1	0.2%
Sexual Psychopath (Miller Act)	3	3	3	3	3	3	3	3	3	3	3	3	3	1.1%	
Forensic Post-trial Sub-total	82	83	83	82	82	83	81	80	81	78	76	77	81	29.1%	
Length of Stay	<30 Days	33	37	36	22	35	26	26	29	38	29	32	36	32	11.4%
	>=30 ~ <365 Days	91	92	95	101	90	103	107	105	92	96	88	85	95	34.5%
	>= 1 Year & < 2 Years	29	31	33	34	33	36	33	30	33	31	34	36	33	11.8%
	>= 2 Years & < 5 Years	30	29	30	31	33	33	34	36	36	39	40	41	34	12.4%
	>= 5 Years & < 20 Years	46	48	48	48	48	48	46	48	48	47	46	45	47	17.0%
	>= 20 Years	37	37	36	36	36	36	36	35	35	35	34	34	36	12.9%
	Median LOS (Days)	448 d	445 d	436 d	466 d	465 d	462 d	484 d	494 d	466 d	496 d	475 d	475 d	468 d	Figure 25
	Median LOS - Civil	439 d	470 d	501 d	540 d	571 d	567 d	568 d	562 d	573 d	604 d	626 d	627 d	554 d	
	Median LOS - Pre-trial	49 d	53 d	59 d	78 d	63 d	69 d	76 d	68 d	55 d	56 d	58 d	61 d	62 d	
	Median LOS - Post-trial	4123 d	4140 d	3988 d	4110 d	4141 d	4079 d	4110 d	4141 d	4170 d	4293 d	4323 d	3998 d	4135 d	
	Average LOS (Days)	2451 d	2400 d	2333 d	2400 d	2391 d	2356 d	2341 d	2324 d	2339 d	2406 d	2362 d	2355 d	2372 d	
Average LOS - Civil	1547 d	1567 d	1604 d	1666 d	1686 d	1648 d	1661 d	1647 d	1651 d	1742 d	1730 d	1708 d	1655 d		
Average LOS - Pre-trial	115 d	110 d	115 d	126 d	123 d	130 d	138 d	133 d	131 d	139 d	139 d	147 d	129 d		
Average LOS - Post-trial	5528 d	5493 d	5339 d	5433 d	5461 d	5425 d	5474 d	5531 d	5553 d	5654 d	5714 d	5510 d	5510 d		

* Counts the total number of individuals who are on the hospital roll at end of each month. This number serves as denominator to calculate percentage of each group.

Performance Related Information for Staff & Managers

6B. Demographic Information of Individuals in Care

Data Source: Avatar

Updated as of 06/01/16

Category	Sub-group	Jun-15	Jul-15	Aug-15	Sep-15	Oct-15	Nov-15	Dec-15	Jan-16	Feb-16	Mar-16	Apr-16	May-16	Monthly Average	Percent*
Total Active (on Roll) at End of Month*		266	274	278	272	275	282	282	283	282	277	274	277	277	
Gender	Female	30%	31%	31%	30%	31%	31%	33%	31%	31%	31%	31%	32%	31%	
	Male	70%	69%	69%	70%	69%	69%	67%	69%	69%	69%	69%	68%	69%	
Age	Median Age (Years)	55 yrs	55 yrs	55 yrs	56 yrs	56 yrs	56 yrs	56 yrs	55 yrs	55 yrs	55 yrs	55 yrs	55 yrs	55 yrs	
	<30 yrs	14%	13%	16%	15%	15%	14%	15%	15%	16%	14%	14%	12%	14%	
	>=30 and <40 yrs	12%	14%	12%	11%	11%	12%	11%	12%	13%	14%	14%	16%	13%	
	>=40 and <50 yrs	12%	12%	9%	8%	11%	11%	11%	11%	10%	10%	10%	9%	10%	
	>=50 and <60 yrs	23%	23%	26%	25%	23%	22%	22%	22%	22%	23%	23%	22%	23%	
	>=60 yrs	38%	38%	37%	41%	41%	40%	41%	40%	40%	40%	40%	40%	40%	
Legal Status of Individuals on Roll at End of Month	Emergency	12%	12%	9%	9%	9%	8%	9%	5%	7%	6%	6%	7%	8%	
	Inpatient Commitment	13%	12%	12%	12%	10%	11%	11%	12%	12%	12%	12%	12%	12%	
	Outpatient Commitment	8%	8%	10%	9%	10%	11%	9%	12%	11%	10%	10%	11%	10%	
	Voluntary	14%	14%	13%	14%	15%	15%	15%	16%	15%	15%	15%	14%	14%	
	Non-Protesting	0%	0%	0%	0%	0%	0%	0%	0%	0%	0%	0.0%	0.0%	0%	
	Civil Sub-total	47%	45%	44%	44%	43%	44%	44%	45%	45%	44%	44%	44%	44%	
	DC Exam	11%	13%	13%	14%	16%	16%	16%	13%	13%	16%	16%	14%	14%	
	Mentally Incompetent	11%	12%	13%	12%	11%	10%	11%	13%	13%	12%	12%	14%	12%	
	Forensic Pre-trial Sub-total	23%	24%	26%	26%	27%	27%	27%	27%	26%	28%	28%	28%	26%	
	NGBRI - DC	26%	26%	26%	26%	25%	25%	24%	24%	24%	24%	24%	24%	25%	
	NGBRI - US	3%	3%	3%	3%	3%	3%	3%	3%	2%	3%	3%	2%	3%	
	NGBRI - VI	0%	0%	0%	0%	0%	0%	0%	0%	0%	0%	0%	0%	0%	
Dual Commitment	0%	0%	0%	0%	0%	0%	0%	0%	0%	0%	0%	0%	0%		
Sexual Psychopath (Miller Ac	1%	1%	1%	1%	1%	1%	1%	1%	1%	1%	1%	1%	1%		
Forensic Post-trial Sub-total	31%	30%	30%	30%	30%	29%	29%	28%	29%	28%	28%	28%	29%		
Length of Stay	Median LOS (Days)	448 d	445 d	436 d	466 d	465 d	462 d	484 d	494 d	466 d	496 d	496 d	475 d	469 d	
	Average LOS (Days)	2451 d	2400 d	2333 d	2400 d	2391 d	2356 d	2341 d	2324 d	2339 d	2406 d	2406 d	2355 d	2375 d	
	<30 days	12%	14%	13%	8%	13%	9%	9%	10%	13%	10%	10%	13%	11%	
	>=30 days & <365 days	34%	34%	34%	37%	33%	37%	38%	37%	33%	35%	35%	31%	35%	
	>= 1 year & < 2 years	11%	11%	12%	13%	12%	13%	12%	11%	12%	11%	11%	13%	12%	
	>= 2 years & < 5 years	11%	11%	11%	11%	12%	12%	12%	13%	13%	14%	14%	15%	12%	
	>= 5 years & < 20 years	17%	18%	17%	18%	17%	17%	16%	17%	17%	17%	17%	16%	17%	
>= 20 years	14%	14%	13%	13%	13%	13%	13%	12%	12%	13%	13%	12%	13%		

* Counts the total number of individuals who are on the hospital roll at end of each month. This number serves as denominator to calculate percentage of each group.