

**Government of the District of Columbia
Department of Behavioral Health (DBH)**

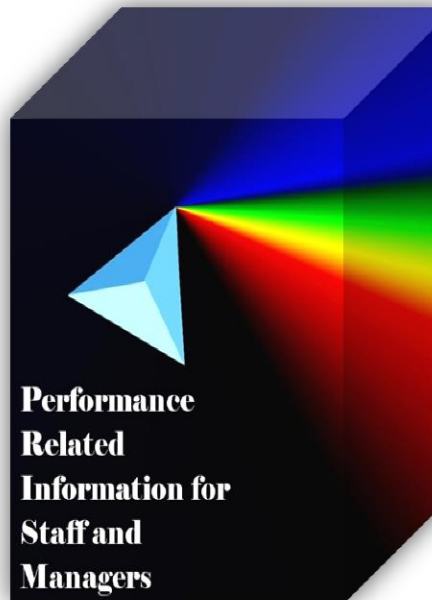


Performance Related Information for Staff and Managers

PRISM

MAY 2014

Table of Contents



1.	Admissions to SEH	1
2.	Discharges from SEH.....	1
3.	Average Daily Census	2
4.	Transfers	2
5.	30-Day Readmission Rate	2
6.	Unusual Incidents.....	3
7.	Patient-Involved Unusual Incidents.....	3
8.	Admissions vs. Patient UI Rate	4
9.	Unusual Incidents by Severity	4
10.	Selected Types of Incidents	4
11.	Physical Assaults by Severity	5
12.	Patient Injuries	5
13.	Staff Injuries.....	5
14.	Percent of Patients Restrained or Secluded.....	6
15.	Restraint Hours Rate & Seclusion Hours Rate	6
16.	Elopements	6
17.	Reported Medication Variance Events	7
18.	Reported Adverse Drug Reactions.....	7
19.	Percent of Missing Documentation on Med-Administration.....	8
20.	Number of STAT Events and Individuals Involved	8
21.	Demographics and Length of Stay	9

- Appendix 1) Table – Census, Admissions & Discharges
- Appendix 2) Table – Key Performance Indicators
- Appendix 3) Table – Unusual Incident & Medication
- Appendix 4) Table – Restraint & Seclusion
- Appendix 5) Table – Demographic Information of Individuals in Care
- Appendix 6) Table – Unusual Incidents by Unit

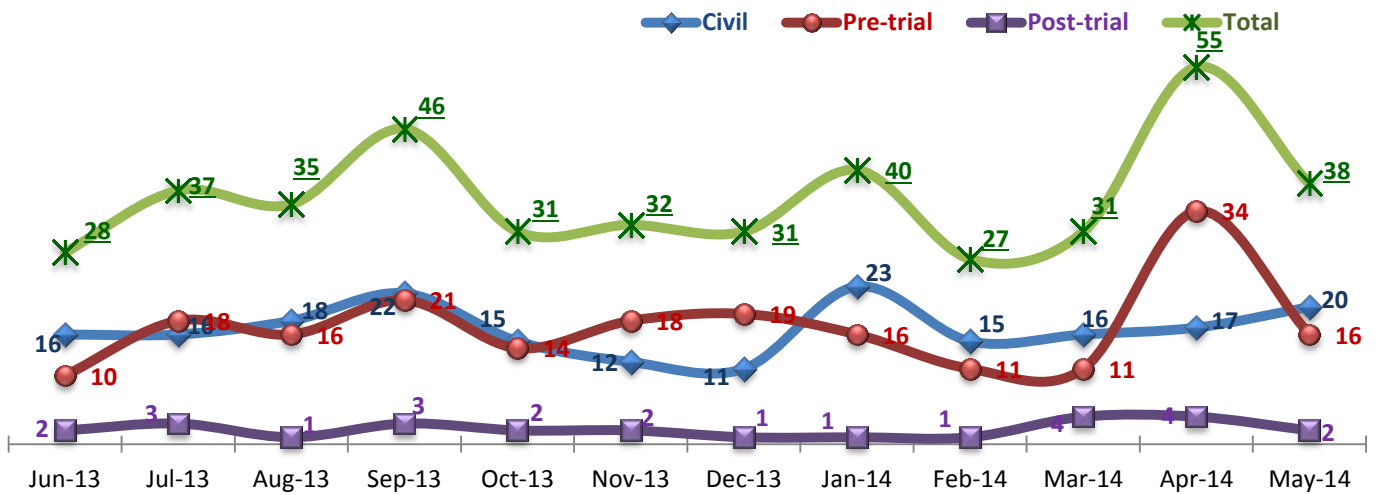
06/17/2014

Office of Statistics and Reporting (OSR)

Key Trends: Admission, Discharge, Transfer, Census, and Readmissions (1~6)

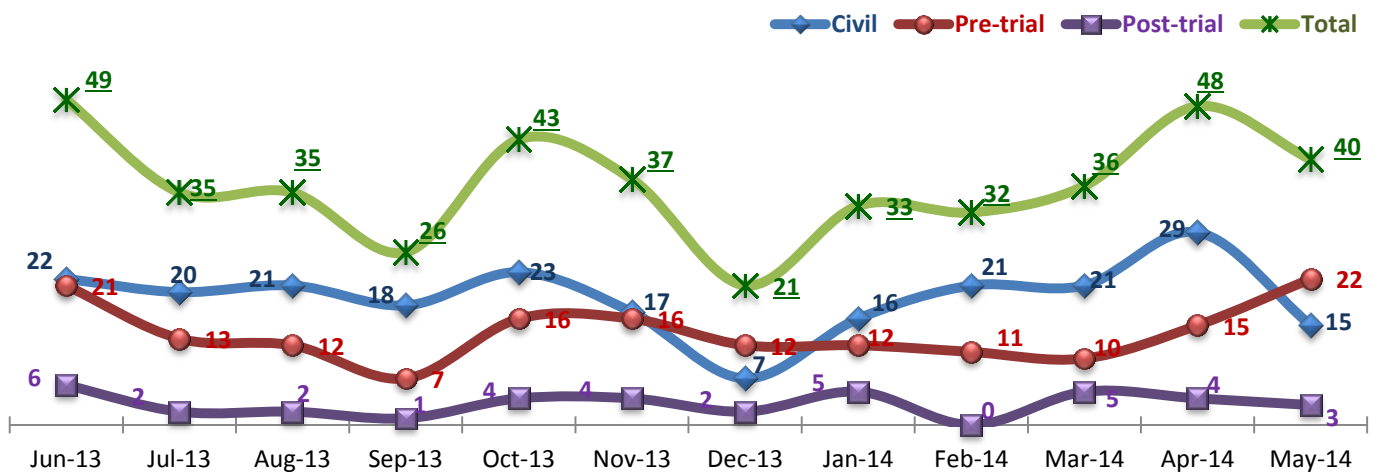
- The number of admissions in May 2014 (38) is significantly lower than that of April (55) but is still higher than the average. The number of discharges slightly exceeded the number of admissions during May, but the average daily census (ADC) in May (268 per day) increased from the ADC in April (264).
- In May 2014, both inter-unit transfers and emergency medical transfers increased.
- There were no individuals re-admitted within 30-days between December 2013 and March 2014 and only one individual discharged in April 2014 (in post-trial legal status) has been readmitted within 30-days. The 30-day readmission rate year-to-date in FY14 is 1.6%, which is far below the NPR (6.9%)¹.

1. Admissions to SEH



* Number of admissions to SEH inpatient program, including transfers from outpatient to inpatient program.

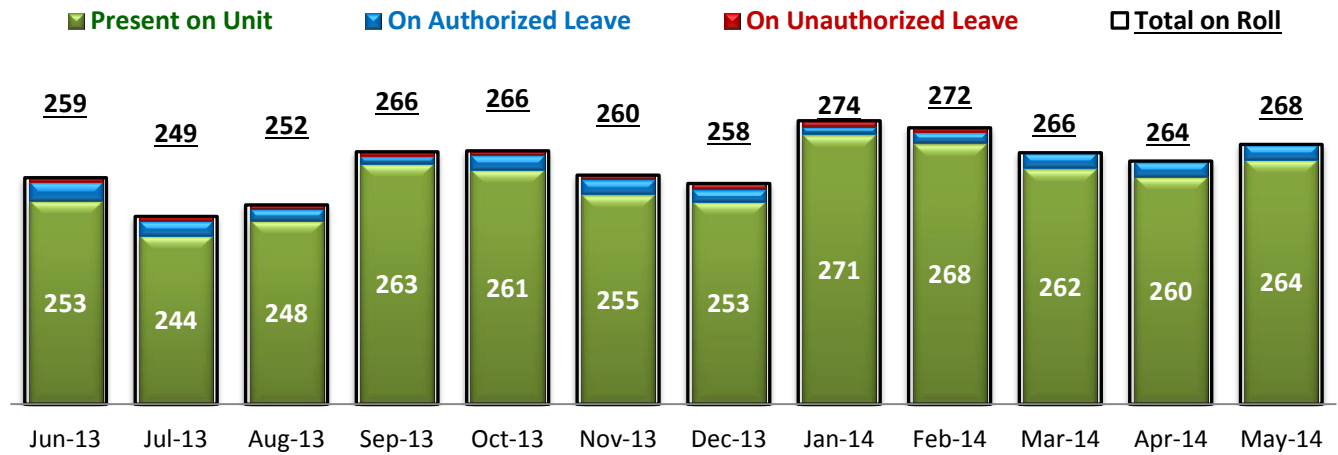
2. Discharges from SEH



* Number of discharges from SEH inpatient program, including transfers from inpatient to outpatient program.

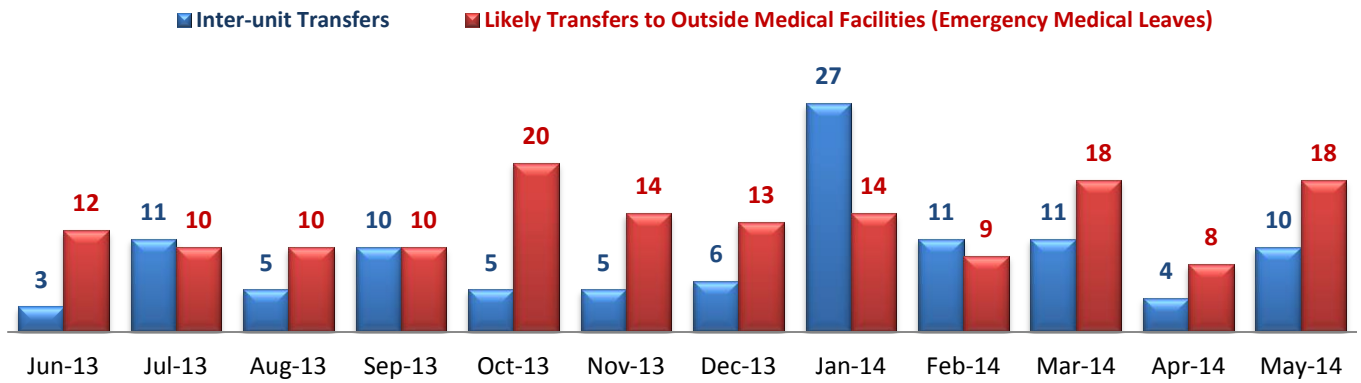
¹ NPR: National Public Rate as of June 2013 was published in November 2013 by National Association of State Mental Health Program Directors Research Institute (NRI), based on data collected from a number of state psychiatric hospitals nationwide.

3. Average Daily Census



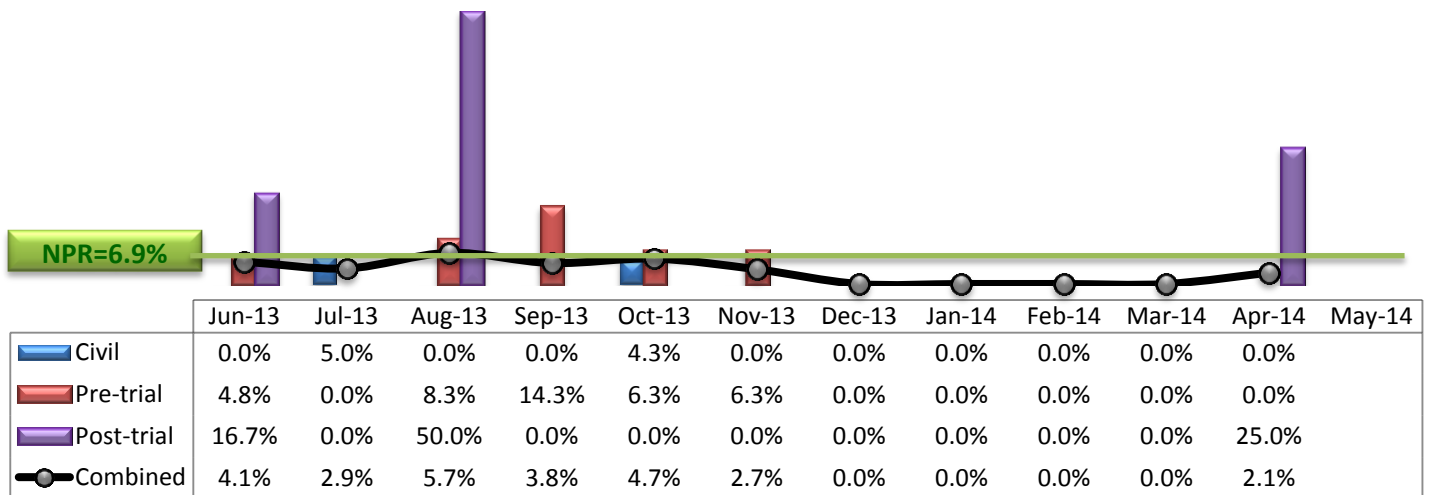
* Data above is the daily average number of individuals counted at 11:59 PM every day during each month.

4. Transfers



* Number of inter-unit transfers that occurred during month and number of emergency medical leaves that were initiated during month.

5. 30-Day Readmission Rate



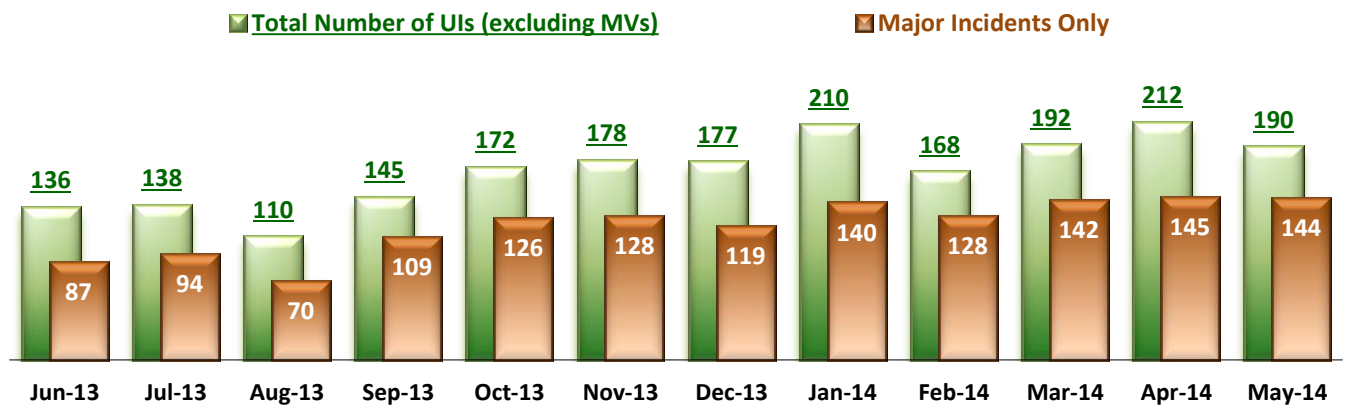
* Percent of discharges that returned to SEH within 30 days of discharges. It does not include those who may have been re-hospitalized at another psychiatric facility. This measure requires 30-day observation following discharge.

** The post-trial denominators (discharges) per month range only between one and six, making the monthly re-admission rate high when there is any. For example, in August 2013, there were two post trial discharges, of which one (50%) was readmitted within 30 days.

Key Trends: Unusual Incidents (7~17)

- The total number of unusual incidents (UIs) and the patient UI rate in May 2014 decreased to 190 and 22.2 per 1000 patient days, respectively, from 212 and 25.8 in April 2014, when the number of UIs peaked following a considerable increase of admissions.
- The 190 UIs involved a total of 106 unique individuals, among which four individuals were involved in 25% (48) of all UIs reported in May.
- Despite the decrease in the overall number of UIs, the number of high severity UIs noticeably increased, from 22 to 32 in May 2014. It should be noted, however, 8 of 32 high severity UIs were triggered by one individual.
- The number of aggressive behaviors, physical assaults, and injuries decreased but the frequency of incidents involving psychiatric emergencies increased. Although the overall number of physical assaults decreased, the number of assaults in high severity increased in May.
- Patient injuries, including major injuries, decreased in May 2014.
- The percentage of individuals with one or more seclusion events increased to 2.6%, which is higher than the national average (NPR 2.4%), but the total hours of seclusion (0.127 per 1000 patient hours) is still far below the NPR (0.44).

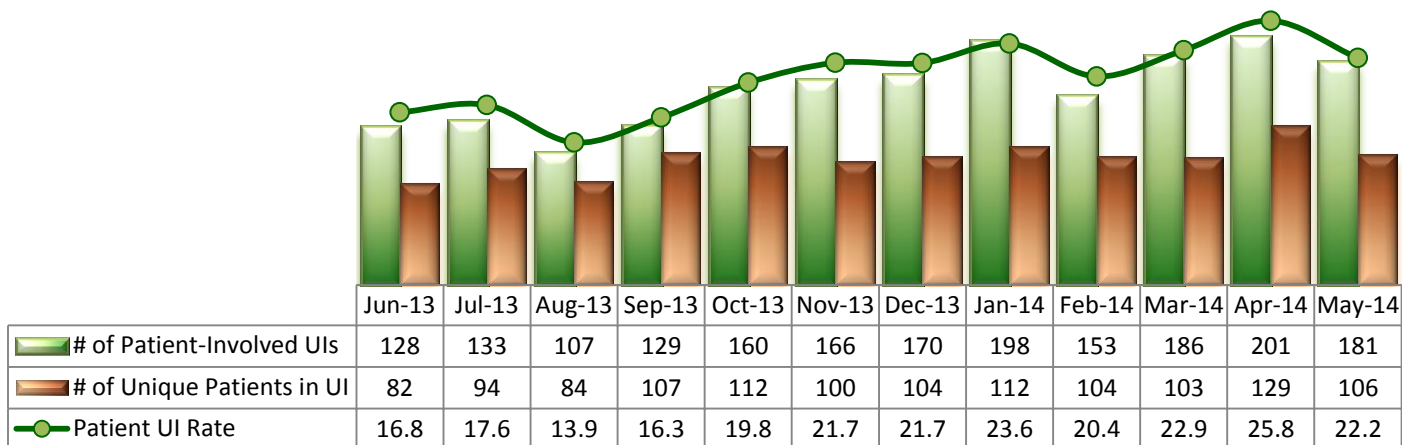
6. Unusual Incidents



* Numbers above represent all types of the unusual incidents (UIs) that were reported to the Risk Manager by PRISM publication date, including those that did not involve any patients.

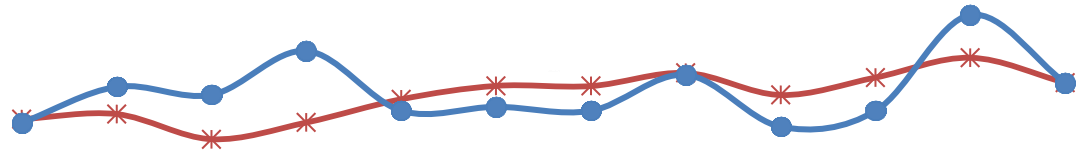
* As of May 2014, a medication or vital sign refusal incident is no longer considered to be an UI. In the above and below charts in this report, any medication or vital sign refusal incidents have been removed for a consistent assessment of the UI trend.

7. Patient-Involved Unusual Incidents



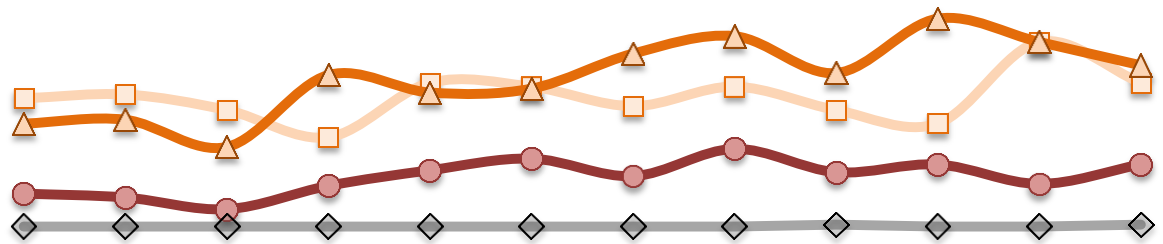
* The patient UI rate is the number of patient-involved unusual incidents reported for every 1000 inpatient days.

8. Admissions vs. Patient UI Rate



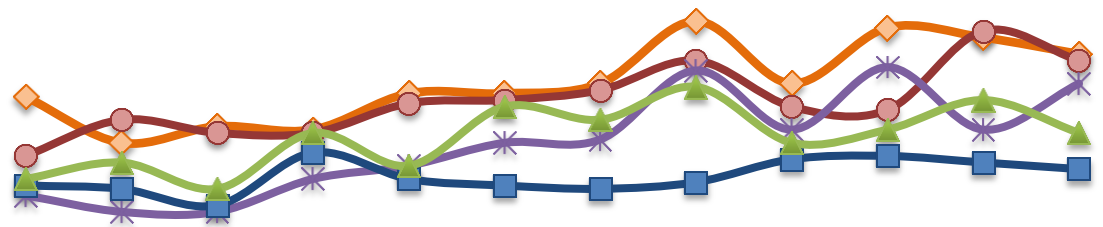
	Jun-13	Jul-13	Aug-13	Sep-13	Oct-13	Nov-13	Dec-13	Jan-14	Feb-14	Mar-14	Apr-14	May-14
—*— Patient UI Rate	16.8	17.6	13.9	16.3	19.8	21.7	21.7	23.6	20.4	22.9	25.8	22.2
—●— Admission	28	37	35	46	31	32	31	40	27	31	55	38

9. Unusual Incidents by Severity



	Jun-13	Jul-13	Aug-13	Sep-13	Oct-13	Nov-13	Dec-13	Jan-14	Feb-14	Mar-14	Apr-14	May-14
□ 1) Low	66	68	60	46	74	72	62	72	60	53	95	74
△ 2) Medium	53	55	41	78	69	71	89	98	79	107	95	83
● 3) High	17	15	9	21	29	35	26	40	28	32	22	32
◇ 4) Catstrp	0	0	0	0	0	0	0	0	1	0	0	1
Total UI	136	138	110	145	172	178	177	210	168	192	212	190

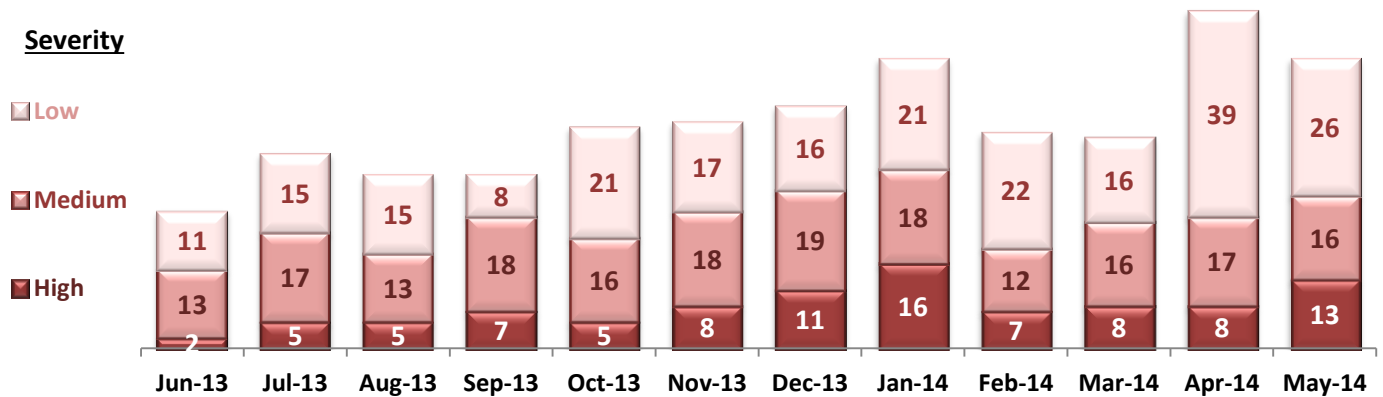
10. Selected Types of Incidents



	Jun-13	Jul-13	Aug-13	Sep-13	Oct-13	Nov-13	Dec-13	Jan-14	Feb-14	Mar-14	Apr-14	May-14
◆ Aggressive Behavior	44	30	35	34	45	45	48	67	48	65	62	57
● Physical Assault	26	37	33	33	42	43	46	55	41	40	64	55
* Pysch Emerg.	14	9	9	19	23	30	31	52	34	53	34	48
■ Fall	17	16	11	27	19	17	16	18	25	26	24	22
▲ Injury	19	24	16	33	23	41	37	47	30	34	43	33

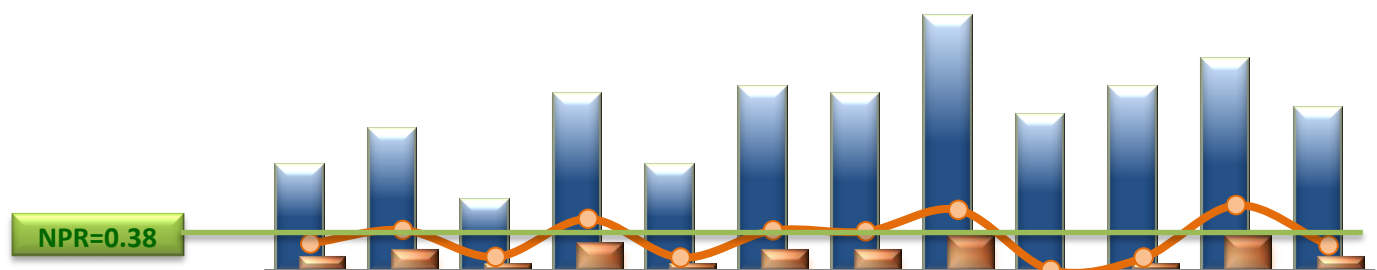
* These are incident types that are frequently reported. Some incidents may be counted in multiple categories. For example, a physical assault incident that accompanied psychiatric emergency and injury is counted under psychiatric emergency and injury as well as under physical assault. Injury is broadly defined to include any type of injuries regardless of the cause or severity level.

11. Physical Assaults by Severity



* Any physical assault that accompanies a code 13 or results in extensive injury needing off-unit treatment or transfer to ER is considered to be high severity, any physical assault that causes a minor injury that can be treated on unit is considered to be medium severity, and physical assault events that result in no injury are considered to be low severity.

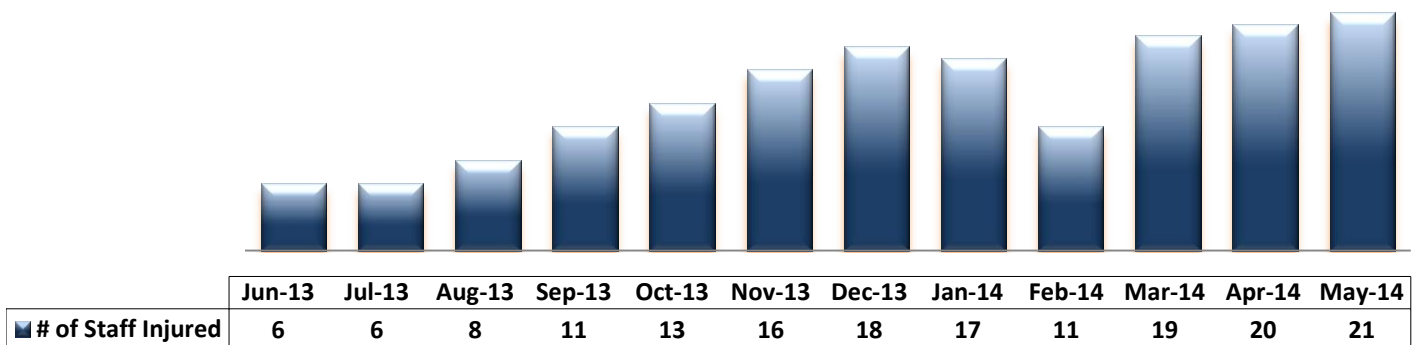
12. Patient Injuries



	Jun-13	Jul-13	Aug-13	Sep-13	Oct-13	Nov-13	Dec-13	Jan-14	Feb-14	Mar-14	Apr-14	May-14
Total Pts Injured	15	20	10	25	15	26	25	36	22	26	30	23
Major Pt Injuries*	2	3	1	4	1	3	3	5	0	1	5	2
Patient Injury Rate	0.26	0.40	0.13	0.51	0.12	0.39	0.38	0.60	0.00	0.12	0.64	0.24

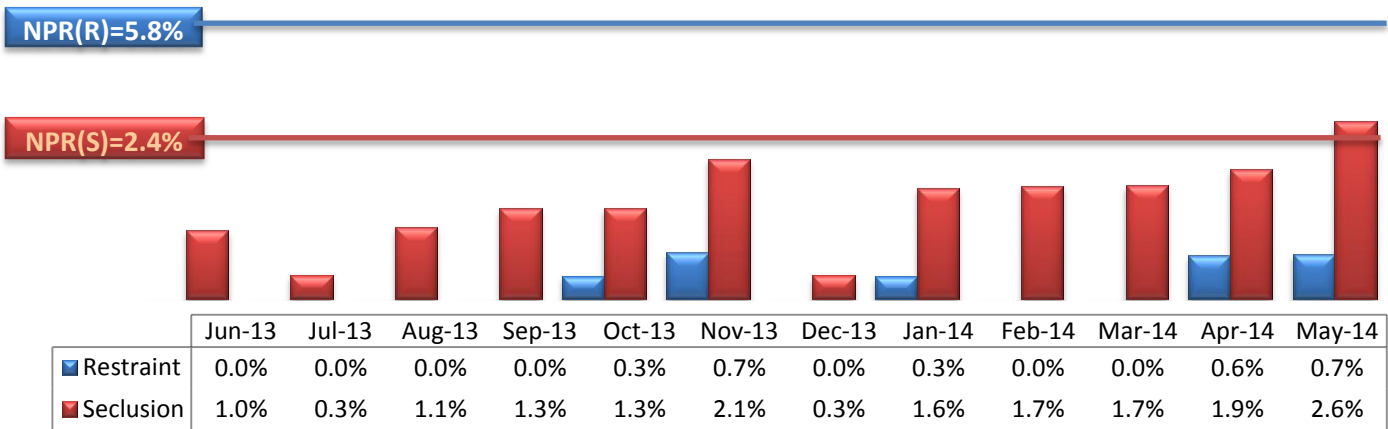
* Injury is broadly defined to include any type of injuries regardless of the cause or severity level. The total number of patients injured represents all of the reported injuries including minor injuries treated with first aid alone. However, the patient injury rate considers only the number of patient injuries that required beyond first-aid level treatment based on the NRI definition and the patient injury rate is the number of 'major' patient injuries per every 1000 inpatient days

13. Staff Injuries



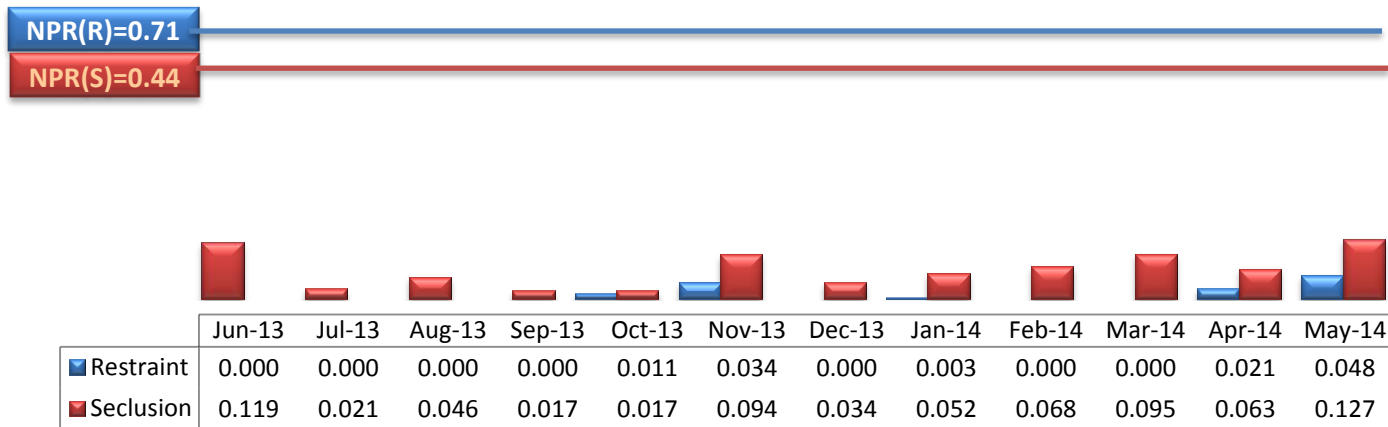
* Injury is broadly defined to include any type of injuries regardless of the cause or severity level. The total number of staff injured represents all of the reported staff injuries including minor injuries treated with first aid alone.

14. Percent of Patients Restrained or Secluded



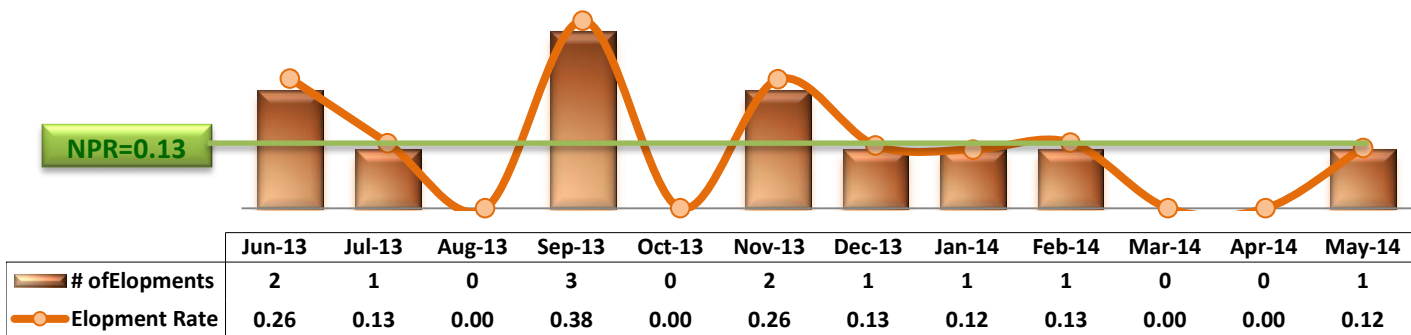
* Percent of unique patients who were restrained at least once and percent of unique patients who were secluded at least once. The denominator includes all individuals who were served in care >=1 day during month.

15. Restraint Hours Rate & Seclusion Hours Rate



* Restraint/Seclusion Hours Rate: Number of hours spent in restraint/seclusion for every 1000 inpatient hours.

16. Elopements

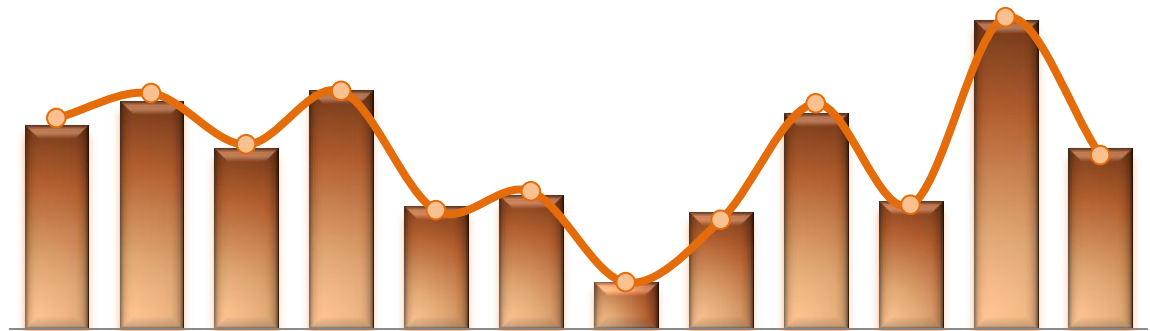


* It counts the total number of unauthorized leaves for any duration that were initiated during month and were recorded in Avatar. The elopement rate is the number of those unauthorized leaves that occurred for every 1000 inpatient days.

Key Trends: Medication Documentation, Medication Variance, ADR, and STAT (18~21)

- The number of reported medication variance events and adverse drug reaction events declined in May 2014.
- The rate of missing documentation on medication administration increased in May 2014.
- Despite an increase of psychiatric emergency incidents, the number of STAT events slightly decreased in May. But, the number of unique individuals who were involved in 3 or more STAT events during month increased, from two (2) in April to seven (7) in May.

17. Reported Medication Variance Events



	Jun-13	Jul-13	Aug-13	Sep-13	Oct-13	Nov-13	Dec-13	Jan-14	Feb-14	Mar-14	Apr-14	May-14
# of MV Events	35	39	31	41	21	23	8	20	37	22	53	31
MV Rate	4.61	5.15	4.03	5.20	2.59	3.01	1.02	2.38	4.92	2.71	6.80	3.79

* MV Rate: Number of reported medication variance events that occurred for every 1000 inpatient days.

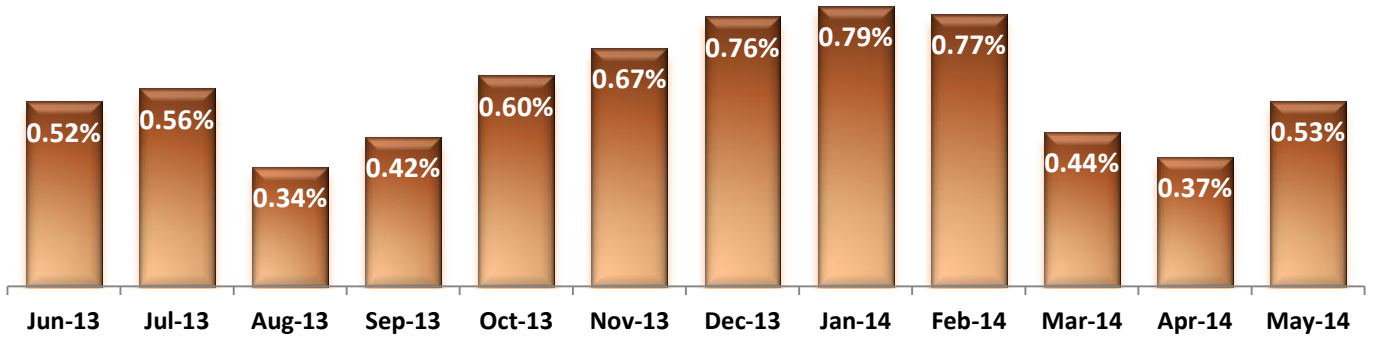
18. Reported Adverse Drug Reactions



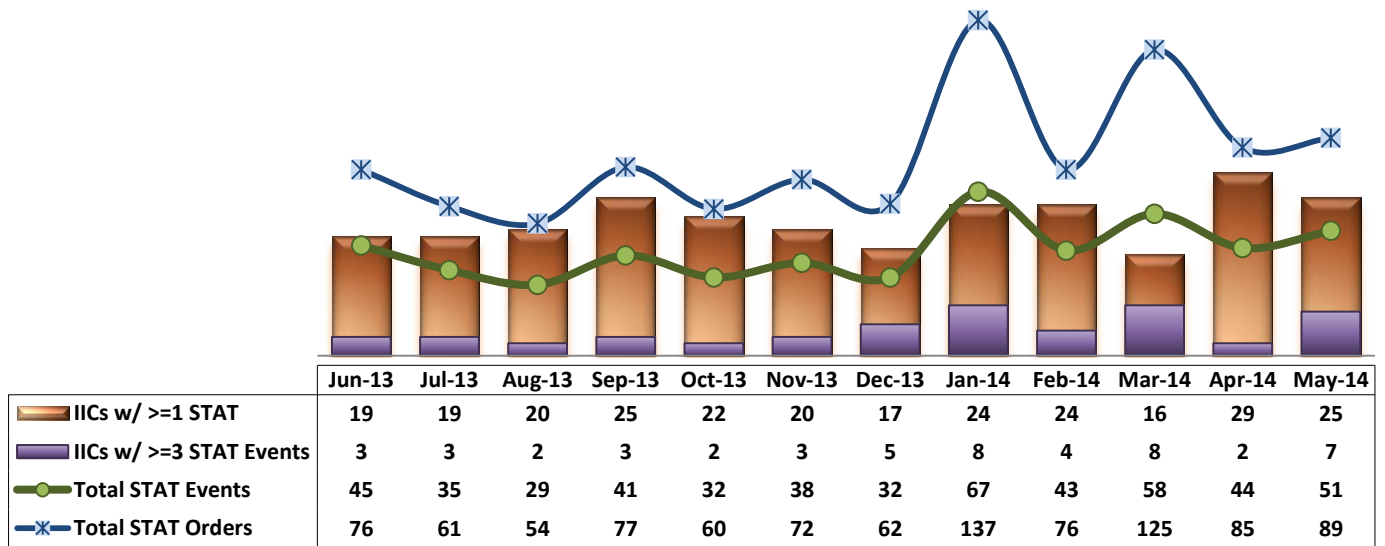
	Jun-13	Jul-13	Aug-13	Sep-13	Oct-13	Nov-13	Dec-13	Jan-14	Feb-14	Mar-14	Apr-14	May-14
# of ADRs	11	7	5	6	2	1	8	9	4	13	10	8
ADR Rate	1.45	0.92	0.65	0.76	0.25	0.13	1.02	1.07	0.53	1.60	1.28	0.98

* ADR Rate: Number of reported adverse drug reaction events that occurred for every 1000 inpatient days.

19. Percent of Missing Documentation on Med-Administration



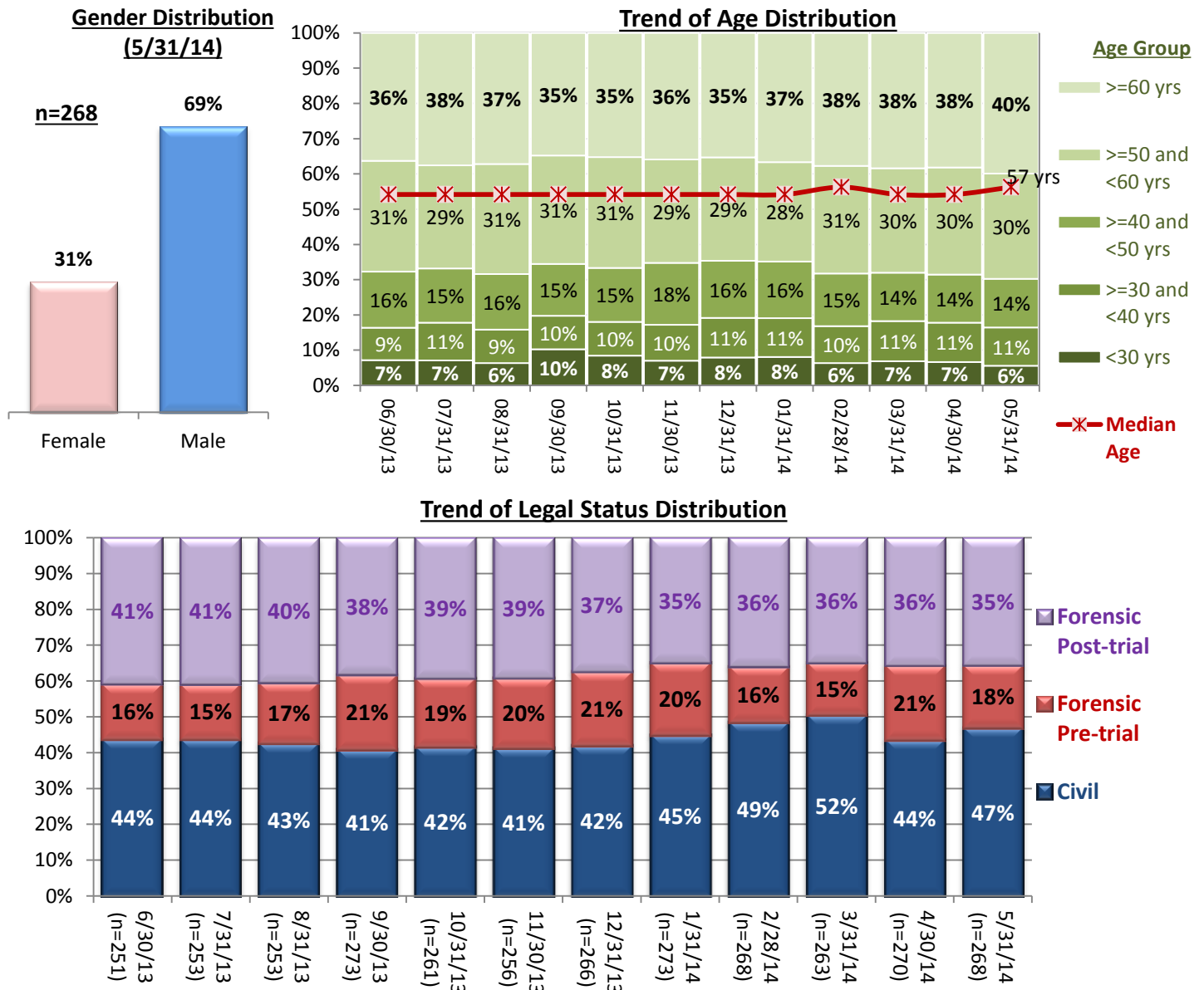
20. Number of STAT Events and Individuals Involved

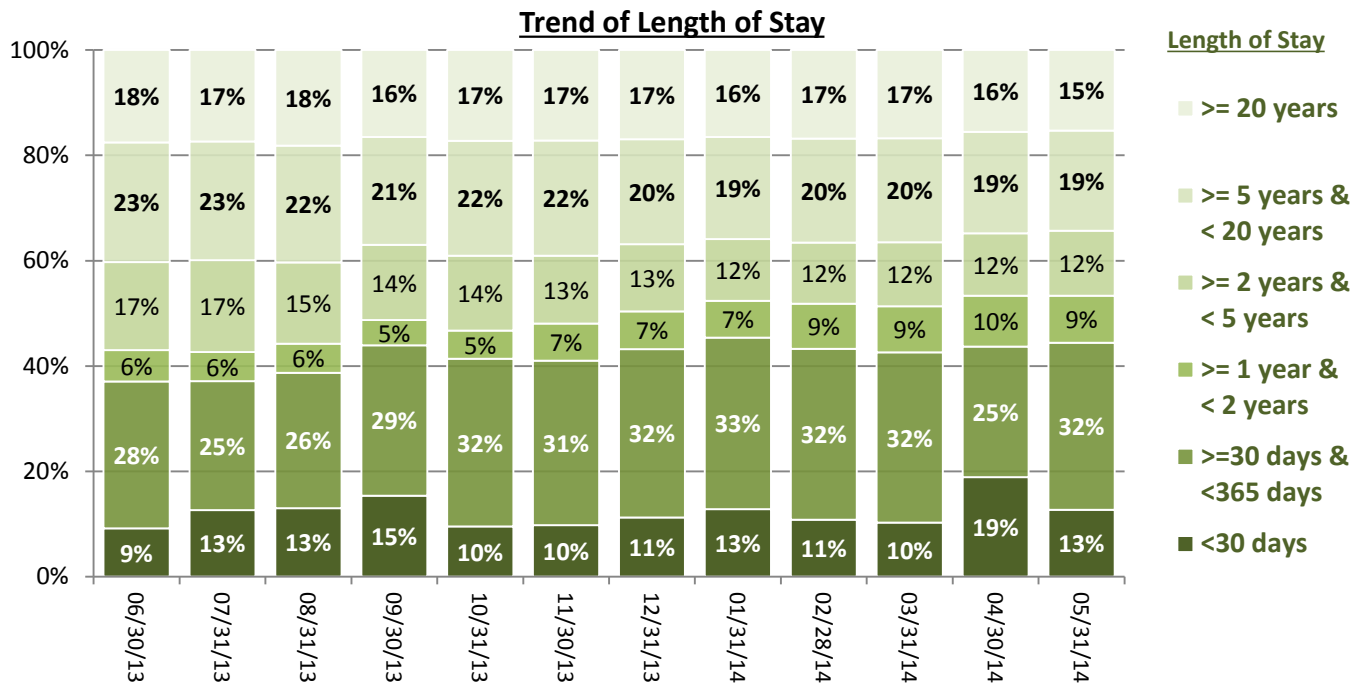
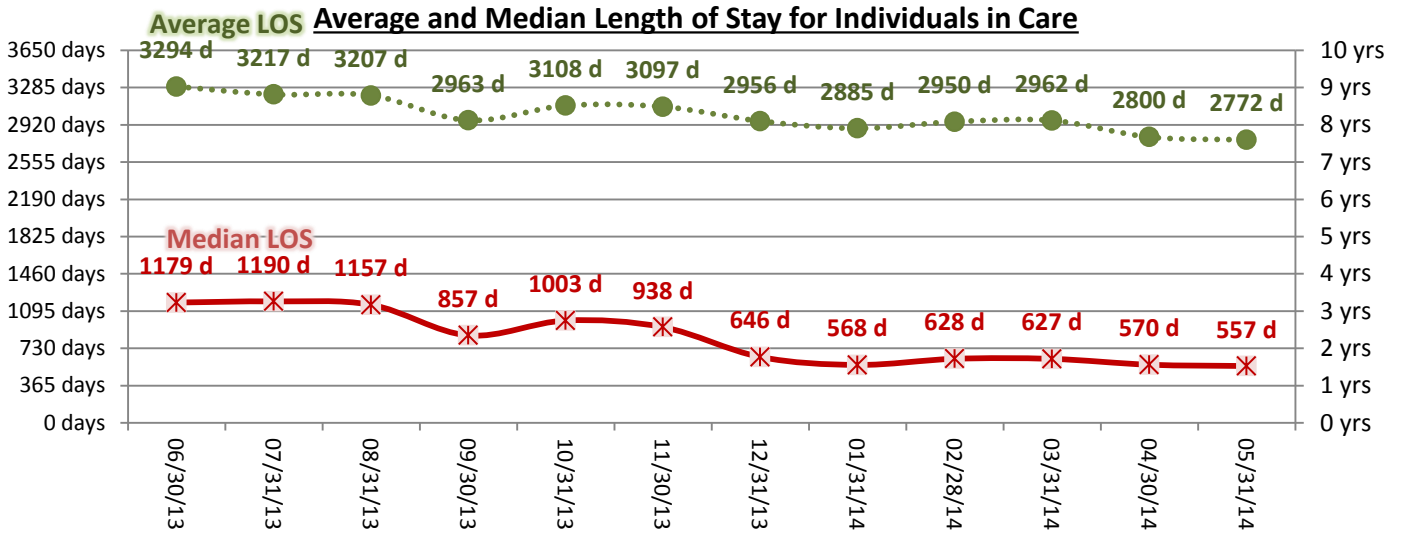


Key Trends: Demographics, Legal Status, and Length of Stay (21)

- The gender distribution slightly changes month by month but overall about 3 out of 10 individuals are female.
- The proportion of the elderly population in our care continued to grow: the percentage of those 60 years or older gradually increased throughout the year, from 35% in May 2013 to 40% as of May 2014.
- As the number of pre-trial discharges increased in May, the percentage of pre-trial population remaining in care decreased and the percentage of civil population in care increased.
- A high number of admissions for the past couple of months contributed to lowering the median length of stay (LOS) of individuals remaining in care since the proportion of recent admissions is relatively large.

21. Demographics and Length of Stay





Performance Related Information for Staff & Managers

1. Census, Admissions, Discharges & Transfers

Data Source: Avatar

Updated as of 06/16/14

Category	Jun-13	Jul-13	Aug-13	Sep-13	Oct-13	Nov-13	Dec-13	Jan-14	Feb-14	Mar-14	Apr-14	May-14	Monthly Average	Total (12mths)	Figure	
Admissions	Civil	16	16	18	22	15	12	11	23	15	16	17	20	17	201	Figure 1
	Pre-trial	10	18	16	21	14	18	19	16	11	11	34	16	17	204	
	Post-trial	2	3	1	3	2	2	1	1	1	4	4	2	2	26	
	Total	28	37	35	46	31	32	31	40	27	31	55	38	36	431	
Discharges	Civil	22	20	21	18	23	17	7	16	21	21	29	15	19	230	Figure 2
	Pre-trial	21	13	12	7	16	16	12	12	11	10	15	22	14	167	
	Post-trial	6	2	2	1	4	4	2	5	0	5	4	3	3	38	
	Total	49	35	35	26	43	37	21	33	32	36	48	40	36	435	
Net Increase During Month	Civil	-6	-4	-3	4	-8	-5	4	7	-6	-5	-12	5		-29	
	Pre-trial	-11	5	4	14	-2	2	7	4	0	1	19	-6		37	
	Post-trial	-4	1	-1	2	-2	-2	-1	-4	1	-1	0	-1		-12	
	Total	-21	2	0	20	-12	-5	10	7	-5	-5	7	-2		-4	
All Individuals on Roll at End of Month	251	253	253	273	261	256	266	273	268	263	270	268	263			
a. Present on Unit	246	247	251	268	256	250	262	269	263	256	268	260	258			
b. On AL	3	5	1	3	4	5	2	3	5	7	2	8	4			
c. On UL	2	1	1	2	1	1	2	1	0	0	0	0	1			
All Individuals on Roll: Daily Average during Month*	259	249	252	266	266	260	258	274	272	266	264	268	263			Figure 3
a. Present on Unit	253	244	248	263	261	255	253	271	268	262	260	264	259			
b. On AL	5	4	3	2	4	4	3	2	3	4	4	4	4			
c. On UL	1	1	1	1	1	1	1	2	1	0	0	0	0			
Patient Days**	7597	7569	7693	7891	8101	7649	7844	8394	7514	8115	7789	8171	7861	94327		
Inter-Unit Transfers during Month	3	11	5	10	5	5	6	27	11	11	4	10	9	108	Figure 4	
Medical Leaves Initiated during Month	Emergency	12	10	10	10	20	14	13	14	9	18	8	18	13		156
Non-Emer	24	35	24	22	39	27	34	25	32	25	30	34	29	351		
Total	36	45	34	32	59	41	47	39	41	43	38	52	42	507		
Non-Medical Leaves Initiated during Month	92	88	96	97	146	121	138	142	141	175	147	230	134	1613		
UL Initiated during Month	2	1	0	3	0	2	1	1	1	0	0	1	1	12		
Total Unique Patients Served during Month	299	286	285	299	299	291	287	306	300	299	315	306	298			
30 Day Readmission ***	Civil	0	1	0	0	1	0	0	0	0	0	0	0	2		
	Pre-trial	1	0	1	1	1	1	0	0	0	0	0	0	5		
	Post-trial	1	0	1	0	0	0	0	0	0	0	1	0	3		
	Total	2	1	2	1	2	1	0	0	0	0	1	1	10		

* This is the average number of individuals served on a given day for the respective month. Due to rounding from average calculation, numbers from its subcategories a, b, & c may not add up to the total number on this row.

** It counts the number of patients who are present on the unit and excludes those on authorized or unauthorized leave at 11:59pm on a given day.

*** Number of patients returning within 30 days of discharges that occurred during month.

Performance Related Information for Staff & Managers

2. Key Performance Indicators

Data Source: UI DB, MV DB, ADR DB, Restraint/Seclusion Log, and Avatar

Updated as of 06/16/14

Category	Jun-13	Jul-13	Aug-13	Sep-13	Oct-13	Nov-13	Dec-13	Jan-14	Feb-14	Mar-14	Apr-14	May-14	Monthly Average	NPR* (Jun-13)	Figure
30 Day Readmit (Discharge Cohort)**	Civil	0.0%	5.0%	0.0%	0.0%	4.3%	0.0%	0.0%	0.0%	0.0%	0.0%	0.0%	0.9%		Figure 5
	Pre-trial	4.8%	0.0%	8.3%	14.3%	6.3%	6.3%	0.0%	0.0%	0.0%	0.0%	0.0%	3.3%		
	Post-trial	16.7%	0.0%	50.0%	0.0%	0.0%	0.0%	0.0%	N/A	0.0%	25.0%		8.6%		
	Combined	4.1%	2.9%	5.7%	3.8%	4.7%	2.7%	0.0%	0.0%	0.0%	0.0%	2.1%	2.5%	6.9%	
Number of Unusual Incidents*	136	138	110	145	172	178	177	210	168	192	212	190	169		Figure 6
Patient Unusual Incident Rate	16.8	17.6	13.9	16.3	19.8	21.7	21.7	23.6	20.4	22.9	25.8	22.2	20.3		Figure 7
UI by Severity	Catastrophe	0	0	0	0	0	0	0	1	0	0	1	0		Figure 9
	High	17	15	9	21	29	35	40	28	32	22	32	26		
	Medium	53	55	41	78	69	71	89	79	107	95	83	77		
	Low	66	68	60	46	74	72	62	72	60	53	95	74	67	
Physical Assault Incident Rate	3.4	4.9	4.3	4.2	5.2	5.6	5.9	6.6	5.5	4.9	8.2	6.7	5.5		
Selected Types of Incidents	Physical Assault	26	37	33	33	42	43	46	55	41	40	64	55	43	Figure 10
	Aggressive Behav.	44	30	35	34	45	45	48	67	48	65	62	57	48	
	Psych Emergency	14	9	9	19	23	30	31	52	34	53	34	48	30	
	Fall	17	16	11	27	19	17	16	18	25	26	24	22	20	
	Injury	19	24	16	33	23	41	37	47	30	34	43	33	32	
Physical Assaults by Severity	High	2	5	5	7	5	8	11	7	8	8	13	13		Figure 11
	Medium	13	17	13	18	16	18	19	12	16	17	16	16		
	Low	11	15	15	8	21	17	16	21	22	16	39	26	19	
Patient Injury Rate***	0.26	0.40	0.13	0.51	0.12	0.39	0.38	0.60	0.00	0.12	0.64	0.24	0.32	0.38	
Patients with Major Injuries***	2	3	1	4	1	3	3	5	0	1	5	2	3		Figure 12
Total Patients Injured***	15	20	10	25	15	26	25	36	22	26	30	23	23		
Total Staff Injured***	6	6	8	11	13	16	18	17	11	19	20	21	14		Figure 13
Elopement Rate	0.26	0.13	0.00	0.38	0.00	0.26	0.13	0.12	0.13	0.00	0.00	0.12	0.14	0.13	Figure 16
Medication Variance Rate	4.61	5.15	4.03	5.20	2.59	3.01	1.02	2.38	4.92	2.71	6.80	3.79	3.83		Figure 17
Adverse Drug Reaction Rate	1.45	0.92	0.65	0.76	0.25	0.13	1.02	1.07	0.53	1.60	1.28	0.98	0.89		Figure 18
Missing Med-Admin Documentation	0.52%	0.56%	0.34%	0.42%	0.60%	0.67%	0.76%	0.79%	0.77%	0.44%	0.37%	0.53%	0.56%		Figure 19
Percent of Patients Restrained	0.0%	0.0%	0.0%	0.0%	0.3%	0.7%	0.0%	0.3%	0.0%	0.0%	0.6%	0.7%	0.2%	5.8%	Figure 14
Percent of Patients Secluded	1.0%	0.3%	1.1%	1.3%	1.3%	2.1%	0.3%	1.6%	1.7%	1.7%	1.9%	2.6%	1.4%	2.4%	
Restraint Hours Rate	0.000	0.000	0.000	0.000	0.011	0.034	0.000	0.003	0.000	0.000	0.021	0.048	0.010	0.71	Figure 15
Seclusion Hours Rate	0.119	0.021	0.046	0.017	0.017	0.094	0.034	0.052	0.068	0.095	0.063	0.127	0.063	0.44	

* National Public Rate, NASMHPD Research Institute, National Research Institute (NRI), Data as of June 2013, Published in November 2013.

** Percentage of patients returning within 30 days of discharges that occurred during month

*** Refer to the next page [UI & Medication]

Performance Related Information for Staff & Managers

3. Unusual Incident & Medication

Data Source: UI DB, MV DB, ADR DB, and Avatar

Updated as of 06/16/14

Category		Jun-13	Jul-13	Aug-13	Sep-13	Oct-13	Nov-13	Dec-13	Jan-14	Feb-14	Mar-14	Apr-14	May-14	Monthly Average	Total (12mths)	NPR* (Jun-13)
Unusual Incidents (excluding MV)**	Total UIs	136	138	110	145	172	178	177	210	168	192	212	190	169	2028	
	Major UIs Only	87	94	70	109	126	128	119	140	128	142	145	144	119	1432	
	Pt Involved UI Only	128	133	107	129	160	166	170	198	153	186	201	181	159	1912	
	Patient UI Rate	16.8	17.6	13.9	16.3	19.8	21.7	21.7	23.6	20.4	22.9	25.8	22.2	20.3		
Unique Pts Involved in UI		82	94	84	107	112	100	104	112	104	103	129	106	103	1237	
Selected Types of Incidents	Physical Assault	26	37	33	33	42	43	46	55	41	40	64	55	43	515	
	Aggressive Behavior	44	30	35	34	45	45	48	67	48	65	62	57	48	580	
	Psych Emergency	14	9	9	19	23	30	31	52	34	53	34	48	30	356	
	Fall	17	16	11	27	19	17	16	18	25	26	24	22	20	238	
	Injury	19	24	16	33	23	41	37	47	30	34	43	33	32	380	
Physical Assault Rate		3.4	4.9	4.3	4.2	5.2	5.6	5.9	6.6	5.5	4.9	8.2	6.7	5.5		
UI by Severity	Catastrophe	0	0	0	0	0	0	0	0	1	0	0	1	0	2	
	High	17	15	9	21	29	35	26	40	28	32	22	32	26	306	
	Medium	53	55	41	78	69	71	89	98	79	107	95	83	77	918	
	Low	66	68	60	46	74	72	62	72	60	53	95	74	67	802	
Physical Assaults by Severity	High	2	5	5	7	5	8	11	16	7	8	8	13	13	95	
	Medium	13	17	13	18	16	18	19	18	12	16	17	16	16	193	
	Low	11	15	15	8	21	17	16	21	22	16	39	26	19	227	
Total Patients Injured***		15	20	10	25	15	26	25	36	22	26	30	23	23	273	
Patients with Major Injuries***		2	3	1	4	1	3	3	5	0	1	5	2	3	30	
Patient Injury Rate***		0.26	0.40	0.13	0.51	0.12	0.39	0.38	0.60	0.00	0.12	0.64	0.24	0.32		0.38
Total Staff Injured**		6	6	8	11	13	16	18	17	11	19	20	21	14		
Total UIs Documented in Avatar		2	1	0	3	0	2	1	1	1	0	0	1	1	13	
Elopement Rate		0.26	0.13	0.00	0.38	0.00	0.26	0.13	0.12	0.13	0.00	0.00	0.12	0.14		0.13
Med Variance (MV) Reports**		35	39	31	41	21	23	8	20	37	22	53	31	30	361	
MV Rate		4.61	5.15	4.03	5.20	2.59	3.01	1.02	2.38	4.92	2.71	6.80	3.79	3.83		
Adverse Drug Reactions Reports		11	7	5	6	2	1	8	9	4	13	10	8	7	84	
ADR Rate		1.45	0.92	0.65	0.76	0.25	0.13	1.02	1.07	0.53	1.60	1.28	0.98	0.89		
Total Med Administrations Scheduled		102644	102303	102848	101049	95559	101422	102249	108474	98616	107326	104201	108187		1234878	
Total Missing Documentations		537	572	348	427	570	684	780	860	759	469	381	568		6955	
Percent of Missing Documentation		0.52%	0.56%	0.34%	0.42%	0.60%	0.67%	0.76%	0.79%	0.77%	0.44%	0.37%	0.53%		0.56%	
Total STAT Orders		76	61	54	77	60	72	62	137	76	125	85	89	81		Figure 20
Total STAT Events****		45	35	29	41	32	38	32	67	43	58	44	51	43		
Total Individuals Involved >=1 STAT		19	19	20	25	22	20	17	24	24	16	29	25	22		
Total Patients with >=3 STAT Events		3	3	2	3	2	3	5	8	4	8	2	7	4		

* National Public Rate, NASMHPD Research Institute, National Research Institute (NRI), Data as of June 2013, Published in November 2013.

** Numbers may change if any additional UI report is made after the data run date from UI database (around the 15th of the following month); According to the revised UI policy as of November 4, 2013, a medication variance (MV) incident became no longer considered to be an unusual incident, and a medication or vital sign refusal incident is not longer an UI as of May 2014. UI data for the past 12 months in this report has been updated to reflect this change and reanalyzed in order to show the UI trend in consistent logic.

*** Injury is broadly defined to include any type of injuries regardless of the cause or severity level. The total number of patients injured represents all of the reported injuries including minor injuries treated with first aid alone. However, the patient injury rate considers only the number of patient injuries that required beyond first-aid level treatment based on the NRI definition and the patient injury rate is the number of 'major' patient injuries per every 1000 inpatient days

**** One STAT event may involve more than one STAT order for the same patient. Any orders placed within 20 minute timeframe are considered to belong to one STAT event.

Performance Related Information for Staff & Managers

4. Restraint & Seclusion

Data Source: Restraint/Seclusion Log and UI DB (for # of total events and patients) and Avatar (for patient days/hours)

Updated as of 06/16/14

Category	Jun-13	Jul-13	Aug-13	Sep-13	Oct-13	Nov-13	Dec-13	Jan-14	Feb-14	Mar-14	Apr-14	May-14	Monthly Average	Total (12mths)	NPR* (Jun-13)
Number of Restraint Events	0	0	0	0	2	2	0	1	0	0	2	6	1.1	13	
Number of Unique Patients Restrained	0	0	0	0	1	2	0	1	0	0	2	2	0.7		
Percentage of Patients Restrained	0.0%	0.0%	0.0%	0.0%	0.3%	0.7%	0.0%	0.3%	0.0%	0.0%	0.6%	0.7%	0.2%		5.8%
Total Restraint Hours (h:mm)	0:00	0:00	0:00	0:00	2:08	6:15	0:00	0:35	0:00	0:00	4:00	9:30	1:52	22:28	
Restraint Hours Rate	0.000	0.000	0.000	0.000	0.011	0.034	0.000	0.003	0.000	0.000	0.021	0.048	0.010		0.71
Number of Seclusion Events	5	4	5	4	4	11	6	6	13	15	10	20	8.6	103	
Number of Unique Patients Secluded	3	1	3	4	4	6	1	5	5	5	6	8	4.3		
Percentage of Patients Secluded	1.0%	0.3%	1.1%	1.3%	1.3%	2.1%	0.3%	1.6%	1.7%	1.7%	1.9%	2.6%	1.4%		2.4%
Total Seclusion Hours (h:mm)	21:45	3:50	8:30	3:10	3:20	17:11	6:20	10:34	12:15	18:27	11:47	24:49	11:49	141:58	
Seclusion Hours Rate	0.119	0.021	0.046	0.017	0.017	0.094	0.034	0.052	0.068	0.095	0.063	0.127	0.063		0.44

* National Public Rate, NASMHPD Research Institute, National Research Institute (NRI), Data as of June 2013, Published in November 2013.

Performance Related Information for Staff & Managers

5. Demographic Information of Individuals in Care

Data Source: Avatar

Updated as of 06/16/14

Category	Sub-group	Jun-13	Jul-13	Aug-13	Sep-13	Oct-13	Nov-13	Dec-13	Jan-14	Feb-14	Mar-14	Apr-14	May-14	Monthly Average	Percent*
Total Active (on Roll) at End of Month*		251	253	253	273	261	256	266	273	268	263	270	268	263	
Gender	Female	67	73	70	70	68	69	72	79	75	76	82	84	74	28.1%
	Male	184	180	183	203	193	187	194	194	193	187	188	184	189	71.9%
Age	Median Age (Years)	56 yrs	56 yrs	56 yrs	56 yrs	56 yrs	56 yrs	56 yrs	56 yrs	57 yrs	56 yrs	56 yrs	57 yrs	56 yrs	
	<30 years old	18	18	16	28	22	18	21	22	17	18	18	15	19	7.3%
	>=30 and <40 years old	23	27	24	26	25	26	30	30	28	30	30	29	27	10.4%
	>=40 and <50 years old	40	39	40	40	40	45	43	44	40	36	37	37	40	15.2%
	>=50 and <60 years old	79	74	79	84	82	75	78	77	82	78	82	80	79	30.1%
	>=60 years old	91	95	94	95	92	92	94	100	101	101	103	107	97	36.9%
Legal Status of Individuals on Roll at End of Month	Emergency	27	19	18	27	18	19	26	34	33	35	31	36	27	10.2%
	Inpatient Commitment	21	23	20	22	24	23	23	26	28	28	30	31	25	9.5%
	Outpatient Commitment	18	19	24	21	25	23	22	22	22	32	19	18	22	8.4%
	Voluntary	44	50	46	42	42	41	41	41	47	43	38	41	43	16.4%
	Civil Sub-total	110	111	108	112	109	106	112	123	130	138	118	126	117	44.5%
	DC Exam	38	38	41	55	48	49	54	54	41	38	35	30	43	16.5%
	Mentally Incompetent	1	1	2	2	2	1	1	1	1	2	21	17	4	1.6%
	Forensic Pre-trial Sub-total	39	39	43	57	50	50	55	55	42	40	56	47	48	18.2%
	NGBRI - DC	87	89	88	89	86	83	82	77	78	77	79	79	83	31.5%
	NGBRI - US	10	9	9	10	11	12	12	13	13	13	12	12	11	4.3%
NGBRI - VI	1	1	1	1	1	1	1	1	1	1	1	1	1	0.4%	
Dual Commitment	2	2	2	2	2	2	2	2	2	2	2	1	2	0.7%	
Sexual Psychopath (Miller Act)	2	2	2	2	2	2	2	2	2	2	2	2	2	0.8%	
Forensic Post-trial Sub-total	102	103	102	104	102	100	99	95	96	95	96	95	99	37.7%	
Length of Stay	Median LOS (Days)	1179 d	1190 d	1157 d	857 d	1003 d	938 d	646 d	568 d	628 d	627 d	570 d	557 d	827 d	
	Average LOS (Days)	3294 d	3217 d	3207 d	2963 d	3108 d	3097 d	2956 d	2885 d	2950 d	2962 d	2800 d	2772 d	3018 d	
	<30 Days	23	32	33	42	25	25	30	35	29	27	51	34	32	12.2%
	>=30 ~ <365 Days	70	62	65	78	83	80	85	89	87	85	67	85	78	29.7%
	>= 1 Year & < 2 Years	15	14	14	13	14	18	19	19	23	23	26	24	19	7.0%
	>= 2 Years & < 5 Years	42	44	39	39	37	33	34	32	31	32	32	33	36	13.6%
	>= 5 Years & < 20 Years	57	57	56	56	57	56	53	53	53	52	52	51	54	20.7%
>= 20 Years	44	44	46	45	45	44	45	45	45	44	42	41	44	16.8%	

* Counts the total number of individuals who are on the hospital roll at end of each month. This number serves as denominator to calculate percentage of each group.

Performance Related Information for Staff & Managers

6. Major Unusual Incidents by Incident Location/Unit

Data Source: UI DB

Updated as of 06/16/14

Category		Jun-13	Jul-13	Aug-13	Sep-13	Oct-13	Nov-13	Dec-13	Jan-14	Feb-14	Mar-14	Apr-14	May-14	Monthly Average	Total (12mths)	Percent
Total Unusual Incidents		136	138	110	145	172	178	177	210	168	192	212	190	169	2028	
Physical Assault		26	37	33	33	42	43	46	55	41	40	64	55	43	515	100%
Incident Location	1A	0	2	6	1	3	1	2	2	1	1	1	5	2	25	5%
	1B	0	0	1	0	2	1	0	0	4	0	1	3	1	12	2%
	1C	0	5	3	4	4	4	3	3	2	0	5	2	3	35	7%
	1D	2	6	4	6	5	4	3	4	7	13	4	8	6	66	13%
	1E	3	4	2	6	2	6	4	13	0	12	8	7	6	67	13%
	1F	1	3	4	6	3	3	8	7	5	1	7	4	4	52	10%
	1G	6	7	1	1	5	8	16	10	8	3	8	9	7	82	16%
	2A	0	0	0	0	0	0	0	0	0	0	0	0	0	0	0%
	2B	0	1	0	0	0	0	0	0	0	0	0	0	0	1	0%
	2C	2	1	3	0	3	3	3	4	5	2	7	5	3	38	7%
	2D	8	2	0	2	8	8	4	6	4	3	15	8	6	68	13%
	TLC - Intensive	3	3	6	4	5	2	2	4	5	3	5	3	4	45	9%
	TLC - Transitional	1	3	2	2	1	3	0	1	0	1	1	0	1	15	3%
	Other	0	0	1	1	1	0	1	1	0	1	2	1	1	9	2%
	Psych Emergency		14	9	9	19	23	30	31	52	34	53	34	48	30	356
Incident Location	1A	0	0	0	0	0	0	0	0	1	0	0	0	0	1	0%
	1B	0	0	0	0	0	0	0	0	3	3	0	0	1	6	1%
	1C	0	0	0	3	1	4	1	0	1	1	0	0	1	11	2%
	1D	2	1	1	3	2	1	0	8	3	7	2	10	3	40	8%
	1E	0	2	0	5	2	9	2	15	1	23	8	5	6	72	14%
	1F	8	1	3	6	3	11	10	17	16	10	5	7	8	97	19%
	1G	3	4	2	1	8	5	16	10	5	3	9	16	7	82	16%
	2A	0	0	0	0	0	0	0	0	0	0	2	0	0	2	0%
	2B	0	0	0	0	1	0	0	0	0	0	0	0	0	1	0%
	2C	0	0	2	1	0	0	0	0	1	4	4	4	1	16	3%
	2D	0	0	0	0	4	0	2	1	2	1	3	2	1	15	3%
	TLC - Intensive	0	0	0	0	2	0	0	1	1	1	0	4	1	9	2%
	TLC - Transitional	1	0	1	0	0	0	0	0	0	0	1	0	0	3	1%
	Other	0	1	0	0	0	0	0	0	0	0	0	0	0	1	0%

Performance Related Information for Staff & Managers

6. Major Unusual Incidents by Incident Location/Unit

Data Source: UI DB

Updated as of 06/16/14

Category		Jun-13	Jul-13	Aug-13	Sep-13	Oct-13	Nov-13	Dec-13	Jan-14	Feb-14	Mar-14	Apr-14	May-14	Monthly Average	Total (12mths)	Percent	
Fall		17	16	11	27	19	17	16	18	25	26	24	22	20	238	100%	
Incident Location	1A	3	2	4	3	2	1	3	2	3	5	1	3	3	32	13%	
	1B	5	4	2	3	4	1	2	1	3	2	2	1	3	30	13%	
	1C	1	4	0	3	2	1	1	4	2	2	2	4	2	26	11%	
	1D	0	0	1	3	2	3	1	1	2	4	1	5	2	23	10%	
	1E	0	1	0	4	1	2	1	3	1	1	2	0	1	16	7%	
	1F	1	0	1	1	0	0	1	3	1	1	1	0	1	10	4%	
	1G	1	0	0	0	0	1	2	0	1	1	1	2	1	9	4%	
	2A	2	0	0	1	2	0	0	0	0	1	0	0	0	1	6	3%
	2B	1	0	0	2	1	2	3	0	1	2	4	0	1	16	7%	
	2C	0	2	0	1	0	0	0	0	1	4	1	2	1	11	5%	
	2D	2	0	1	2	1	2	0	1	2	2	7	1	2	21	9%	
	TLC - Intensive	1	0	0	2	2	2	2	2	0	0	0	1	0	1	10	4%
	TLC - Transitional	0	0	0	1	1	1	0	0	1	0	1	1	1	1	6	3%
	Other	0	3	2	1	1	1	0	3	6	2	0	3	2	22	9%	
Physical Injury		19	24	16	33	23	41	37	47	30	34	43	33	32	380	100%	
Incident Location	1A	1	4	4	2	1	2	1	0	1	4	3	3	2	26	7%	
	1B	2	1	1	3	0	2	0	1	2	2	1	3	2	18	5%	
	1C	1	3	0	3	1	2	3	3	2	1	0	2	2	21	6%	
	1D	1	5	3	7	4	5	4	11	6	5	1	6	5	58	15%	
	1E	3	0	1	4	2	6	2	7	1	8	6	3	4	43	11%	
	1F	3	2	3	4	1	2	10	10	5	1	3	1	4	45	12%	
	1G	2	2	1	1	5	4	11	3	5	2	5	9	4	50	13%	
	2A	0	0	0	1	1	1	0	0	0	0	0	0	0	0	3	1%
	2B	1	0	0	1	1	1	1	0	1	2	1	0	1	9	2%	
	2C	0	2	1	1	1	3	1	4	1	5	7	2	2	28	7%	
	2D	2	1	0	2	2	4	3	3	3	2	8	1	3	31	8%	
	TLC - Intensive	3	1	2	2	1	4	1	2	1	2	2	1	2	22	6%	
	TLC - Transitional	0	2	0	1	1	2	0	0	0	0	0	0	1	6	2%	
	Other	0	1	0	1	2	3	0	3	2	0	6	2	2	20	5%	

* Not every incident is a major incident. This counts only those incidents that were classified to be major based on the policy.