

**Government of the District of Columbia  
Department of Mental Health (DMH)**

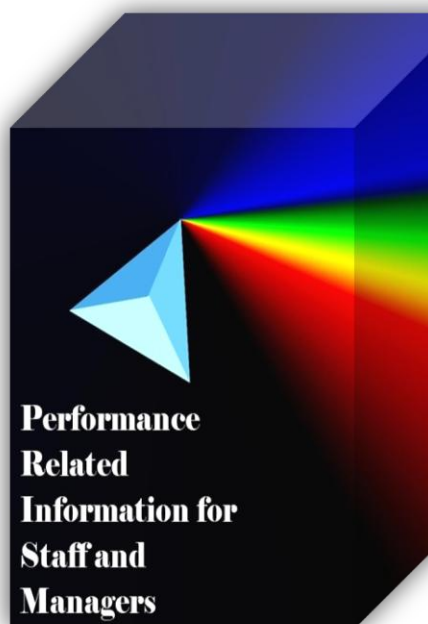


**Performance Related Information for Staff and Managers**

# PRISM

## MAY 2013

Table of Contents



1.	Admissions to SEH .....	1
2.	Discharges from SEH.....	1
3.	Average Daily Census .....	1
4.	Transfers .....	2
5.	30-Day Readmission Rate .....	2
6.	Unusual Incidents.....	2
7.	Unusual Incidents by Severity .....	3
8.	Patient-Involved Unusual Incidents.....	3
9.	Selected Types of Incidents .....	4
10.	Physical Assaults by Severity .....	4
11.	Patient Injuries.....	5
12.	Staff Injuries.....	5
13.	Eloperments .....	5
14.	Reported Medication Variance Events .....	6
15.	Reported Adverse Drug Reactions .....	6
16.	Percent of Missing Documentation on Med-Administration.....	6
17.	Number of STAT Events and Individuals Involved .....	7
18.	Percent of Patients Restrained or Secluded.....	7
19.	Restraint Hours Rate & Seclusion Hours Rate .....	7
20.	Demographics and Length of Stay .....	8

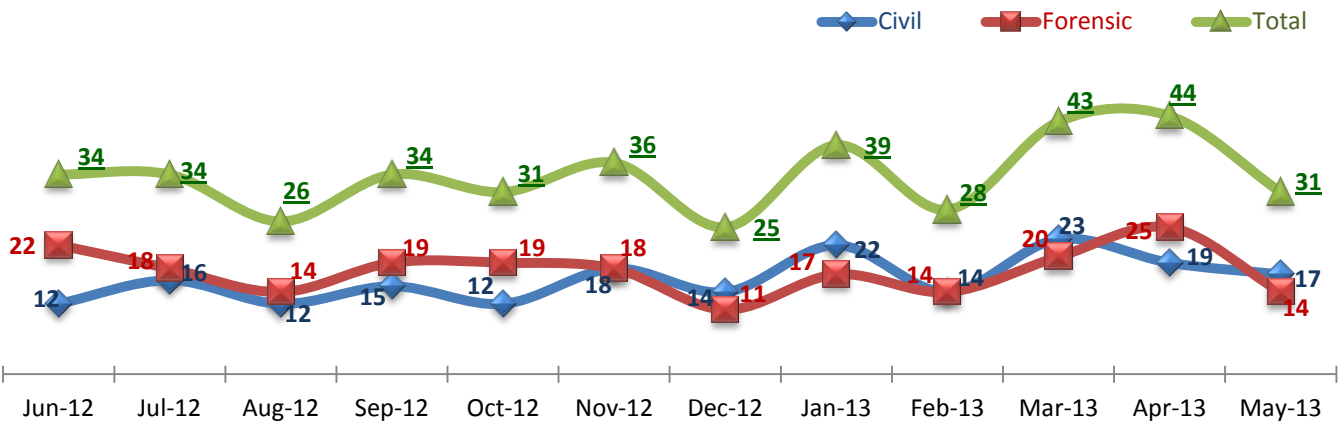
  

<input type="checkbox"/>	<i>Appendix 1) Table – Census, Admissions &amp; Discharges</i>
<input type="checkbox"/>	<i>Appendix 2) Table – Key Performance Indicators</i>
<input type="checkbox"/>	<i>Appendix 3) Table – Unusual Incident &amp; Medication</i>
<input type="checkbox"/>	<i>Appendix 4) Table – Restraint &amp; Seclusion</i>
<input type="checkbox"/>	<i>Appendix 5) Table – Major Incidents by Incident Location/Unit</i>
<input type="checkbox"/>	<i>Appendix 6) Table – Demographic Information of Individuals in Care</i>

**06/20/2013**

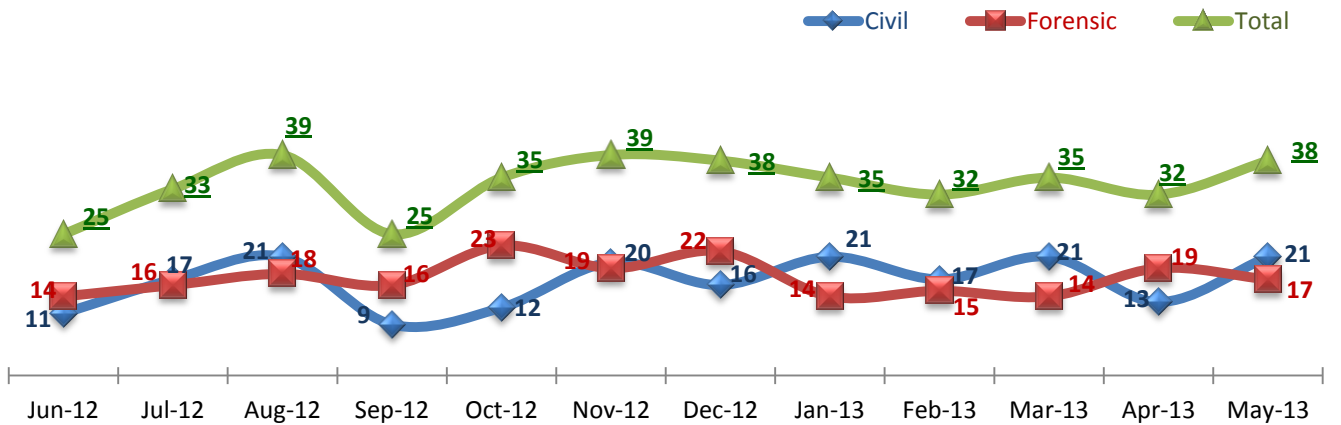
**Office of Statistics and Reporting (OSR)**

### 1. Admissions to SEH



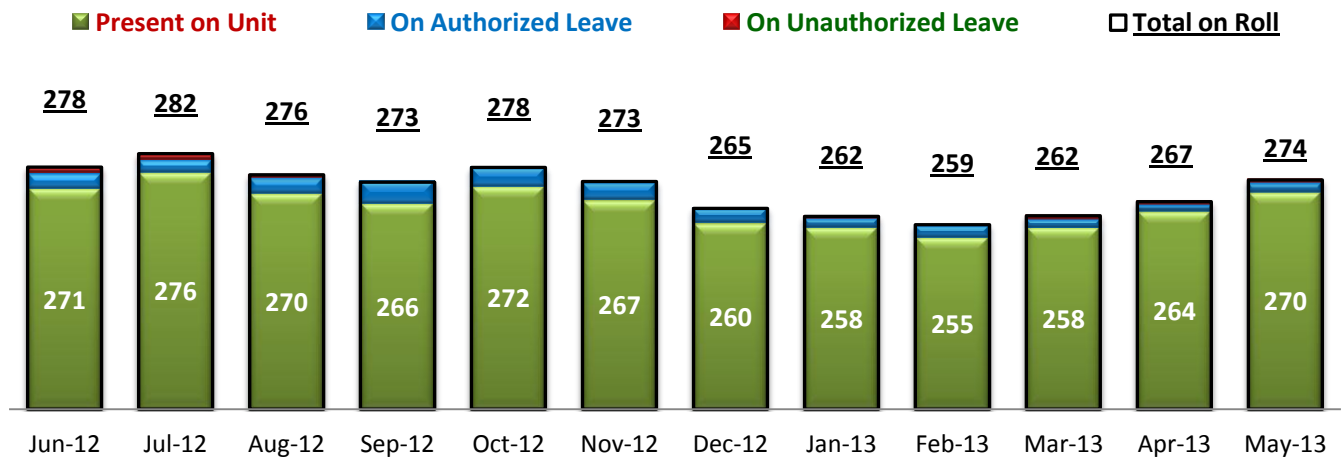
\* Number of admissions to SEH inpatient program, including transfers from outpatient to inpatient program.

### 2. Discharges from SEH



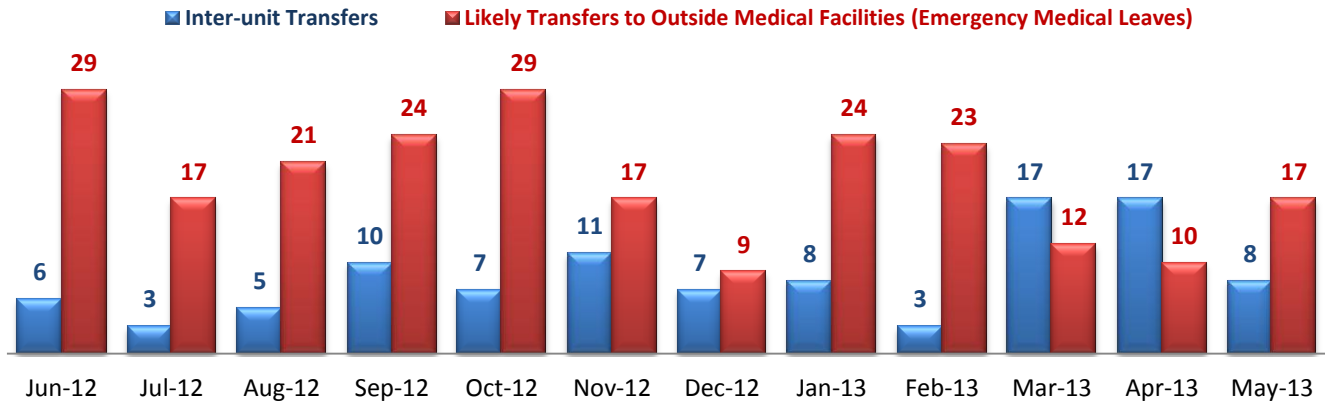
\* Number of discharges from SEH inpatient program, including transfers from inpatient to outpatient program.

### 3. Average Daily Census



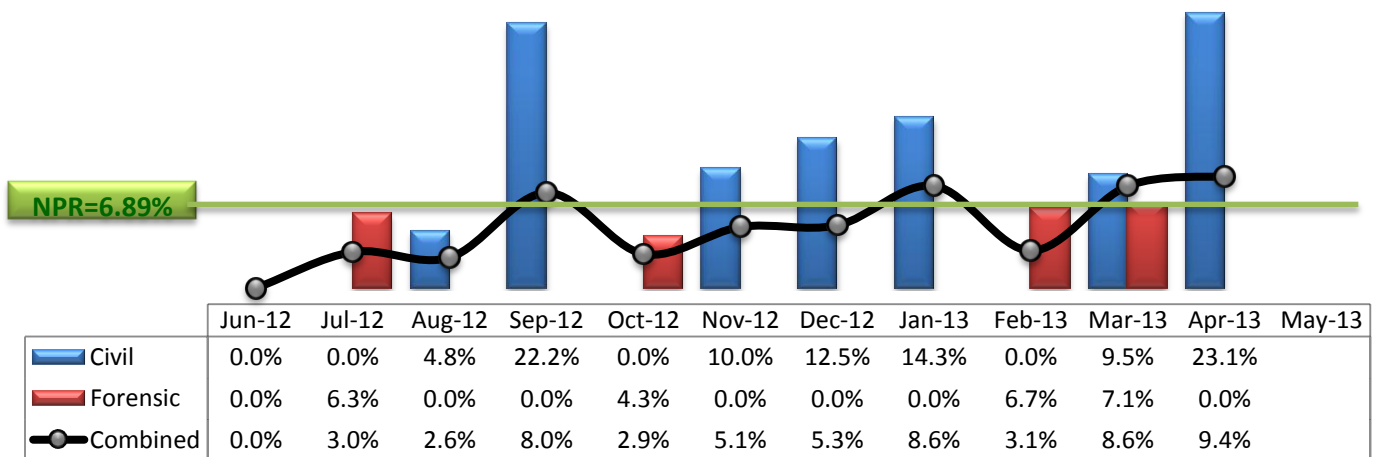
\* Data above is the daily average number of individuals counted at 11:59 PM every day during each month.

### 4. Transfers



\* Number of inter-unit transfers that occurred during month and number of emergency medical leaves that were initiated during month.

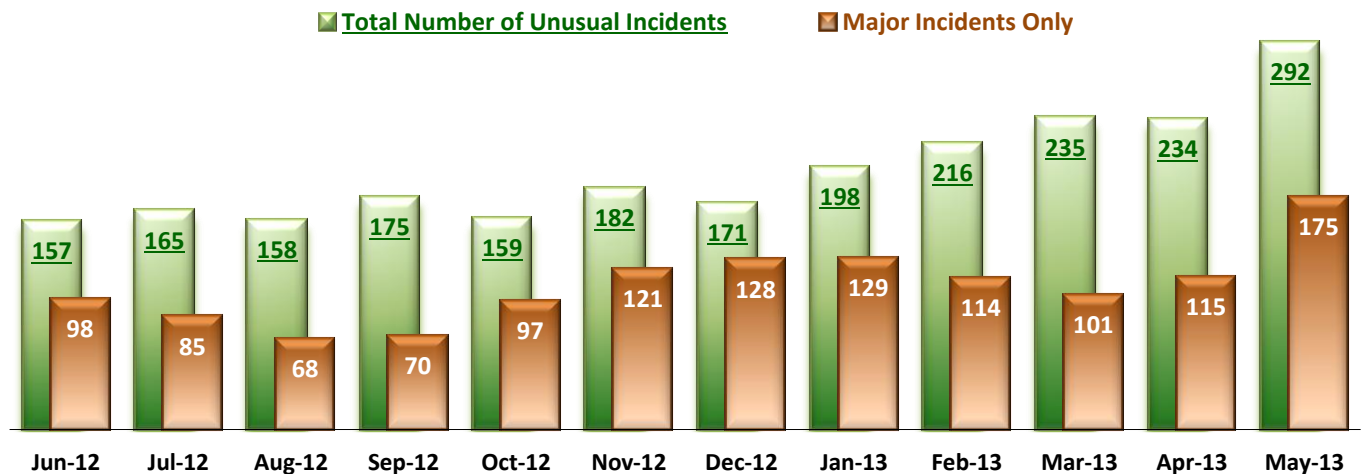
### 5. 30-Day Readmission Rate



\* Percent of discharges that returned to SEH within 30 days of discharges. It does not include those who may have been re-hospitalized at another psychiatric facility. This measure requires 30-day observation following discharge.

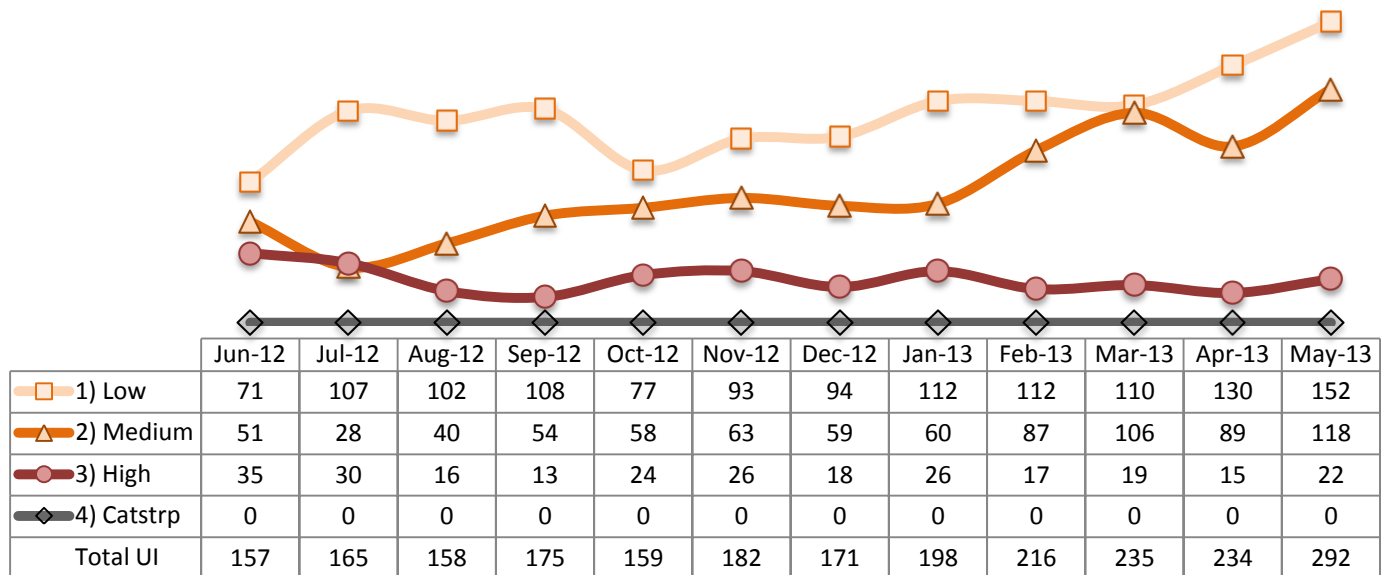
\*\* NPR: National Public Rate as of June 2012 published by NASMHPD Research Institute in January 2013.

### 6. Unusual Incidents

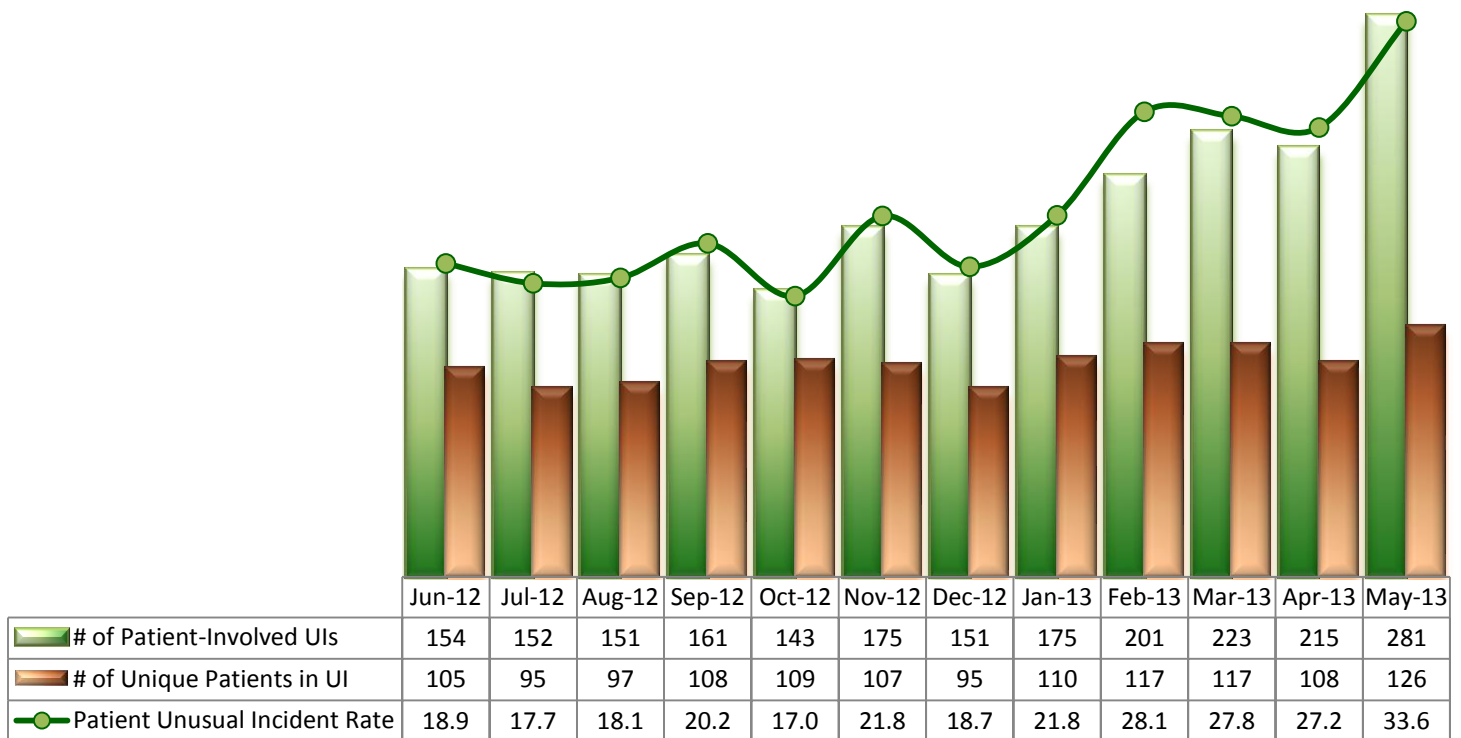


\* Numbers above represent all types of the unusual incidents (UIs) that were reported to the Risk Manager by PRISM publication date, including those that did not involve any patients.

## 7. Unusual Incidents by Severity

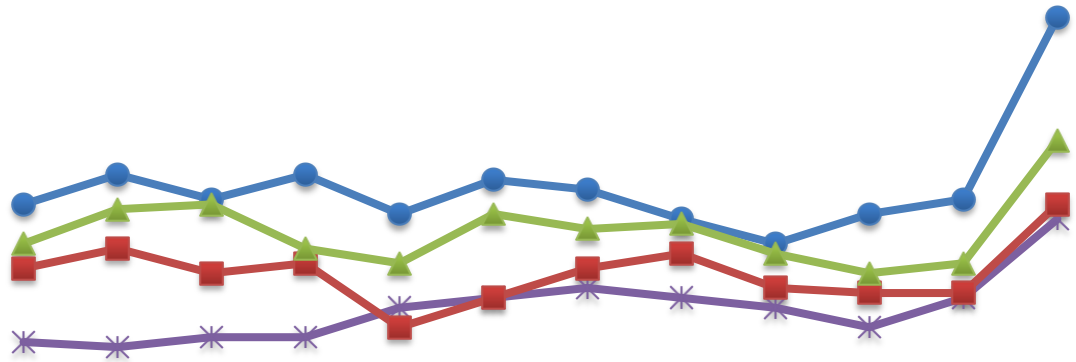


## 8. Patient-Involved Unusual Incidents



\*The total number of patient-involved UIs counts only those incidents that involved at least one or more patients. Some patients may be involved in more than one incident and the number of unique patients does not double count them. The patient UI rate is the number of patient-involved unusual incidents reported for every 1000 inpatient days.

## 9. Selected Types of Incidents



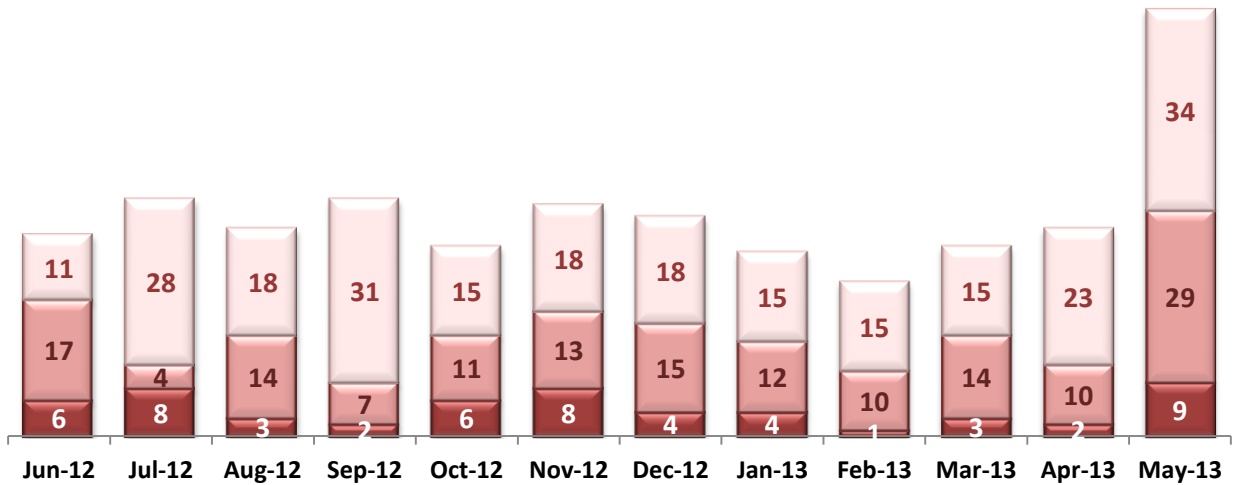
	Jun-12	Jul-12	Aug-12	Sep-12	Oct-12	Nov-12	Dec-12	Jan-13	Feb-13	Mar-13	Apr-13	May-13
Physical Assault	34	40	35	40	32	39	37	31	26	32	35	72
Psych Emergency	6	5	7	7	13	15	17	15	13	9	15	31
Fall	21	25	20	22	9	15	21	24	17	16	16	34
Injury	26	33	34	25	22	32	29	30	24	20	22	47

\* These are incident types that are frequently reported. Some incidents may be counted in multiple categories. For example, a physical assault incident that accompanied psychiatric emergency and injury is counted under psychiatric emergency and injury as well as under physical assault. Injury is broadly defined to include any type of injuries regardless of the cause or severity level.

## 10. Physical Assaults by Severity

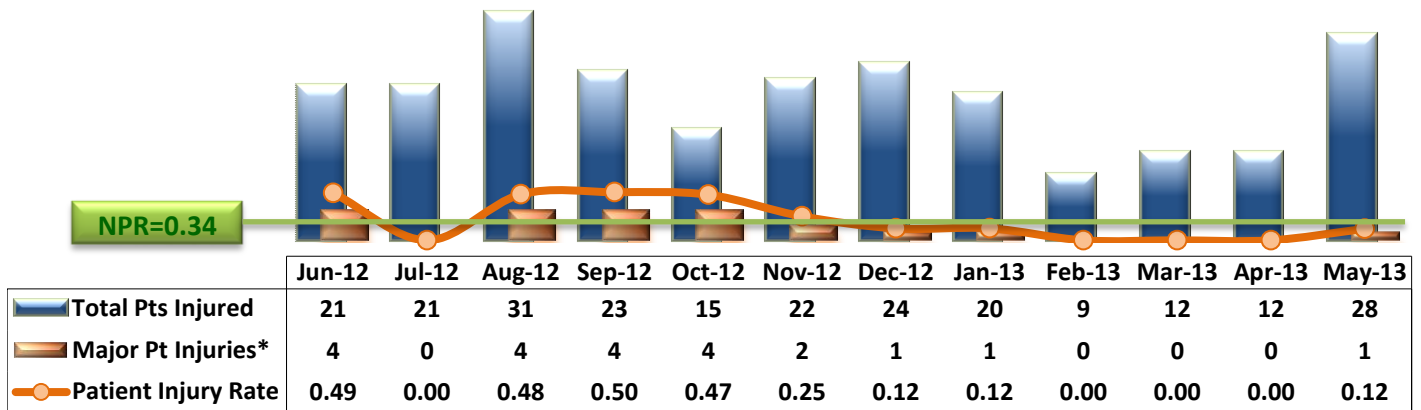
### Severity

- Low
- Medium
- High



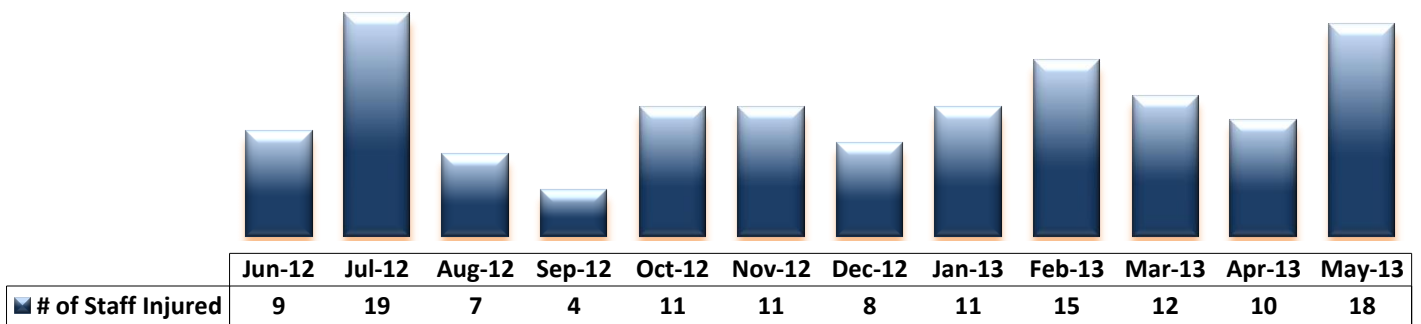
\* Any physical assault that accompanies a code 13 or results in extensive injury needing off-unit treatment or transfer to ER is considered to be high severity, any physical assault that causes a minor injury that can be treated on unit is considered to be medium severity, and physical assault events that result in no injury are considered to be low severity.

## 11. Patient Injuries



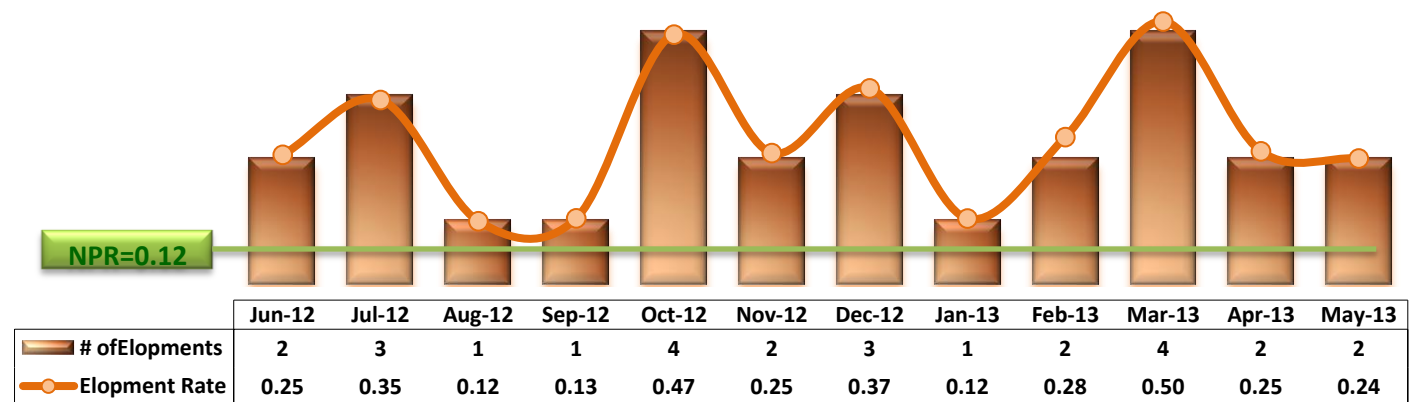
\* Injury is broadly defined to include any type of injuries regardless of the cause or severity level. The total number of patients injured represents all of the reported injuries including minor injuries treated with first aid alone. However, the patient injury rate considers only the number of patient injuries that required beyond first-aid level treatment based on the NRI definition and the patient injury rate is the number of 'major' patient injuries per every 1000 inpatient days

## 12. Staff Injuries



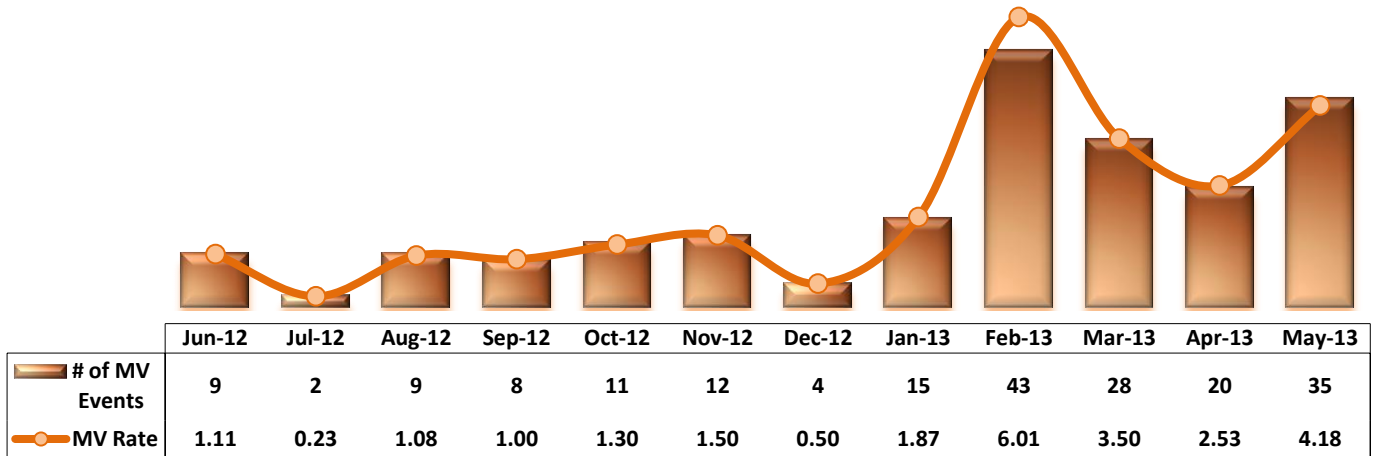
\* Injury is broadly defined to include any type of injuries regardless of the cause or severity level. The total number of staff injured represents all of the reported staff injuries including minor injuries treated with first aid alone.

## 13. Elopements



\* It counts the total number of unauthorized leaves for any duration that were initiated during month and were recorded in Avatar. The elopement rate is the number of those unauthorized leaves that occurred for every 1000 inpatient days.

### 14. Reported Medication Variance Events



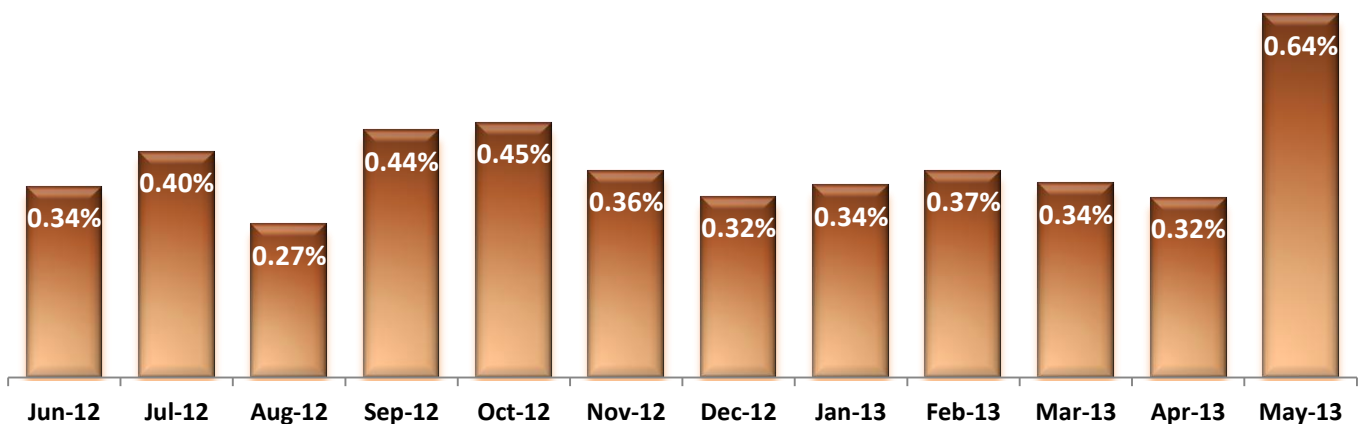
\* MV Rate: Number of reported medication variance events that occurred for every 1000 inpatient days.

### 15. Reported Adverse Drug Reactions

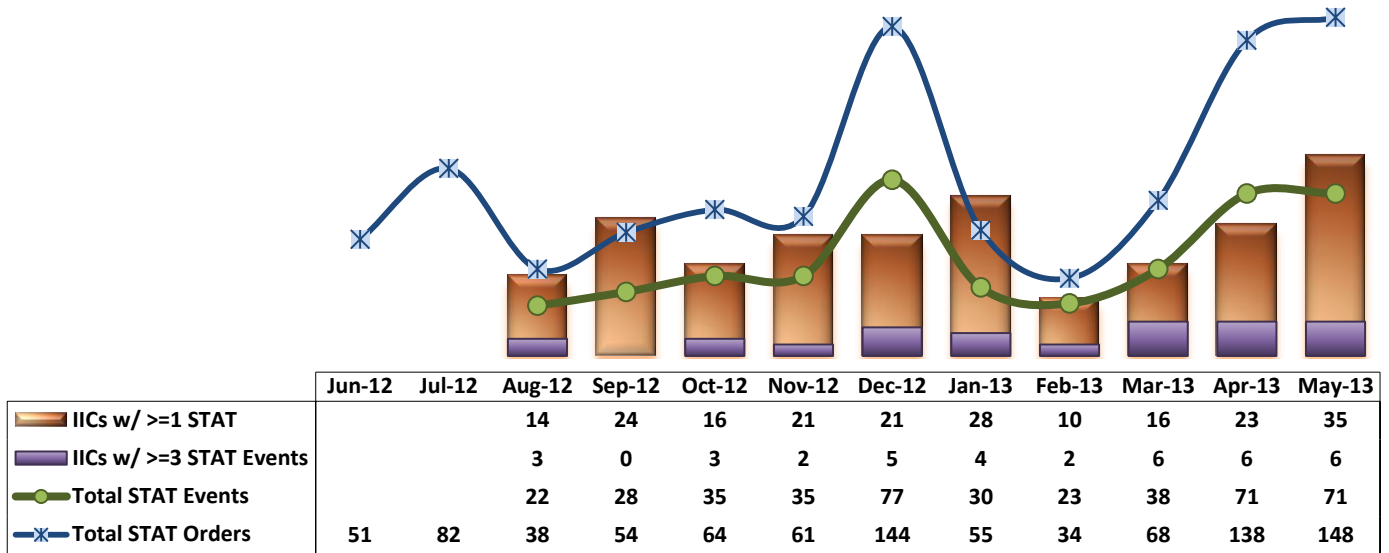


\* ADR Rate: Number of reported adverse drug reaction events that occurred for every 1000 inpatient days.

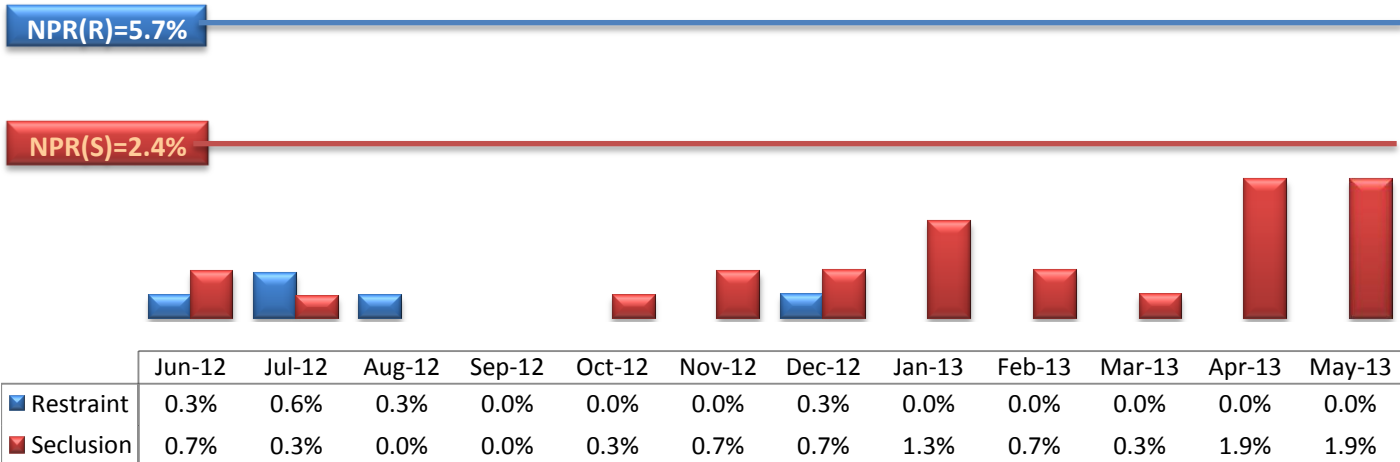
### 16. Percent of Missing Documentation on Med-Administration



### 17. Number of STAT Events and Individuals Involved

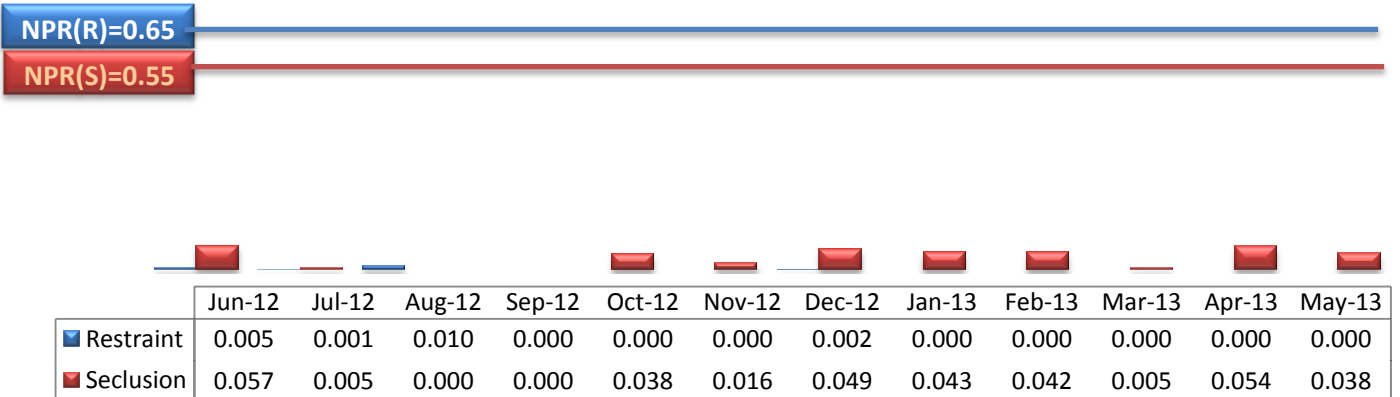


### 18. Percent of Patients Restrained or Secluded



\* Percent of unique patients who were restrained at least once and percent of unique patients who were secluded at least once. The denominator includes all individuals who were served in care >=1 day during month.

### 19. Restraint Hours Rate & Seclusion Hours Rate

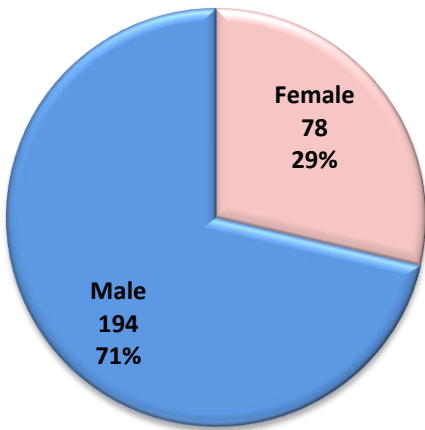


\* Restraint/Seclusion Hours Rate: Number of hours spent in restraint/seclusion for every 1000 inpatient hours.

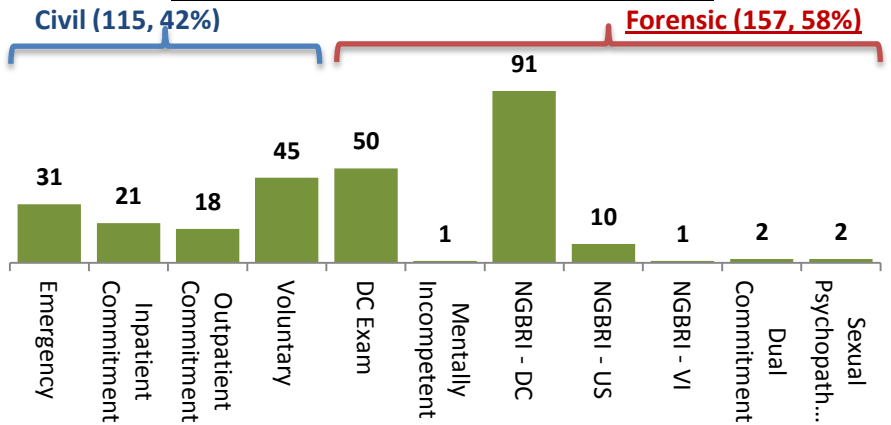


## 20. Demographics and Length of Stay

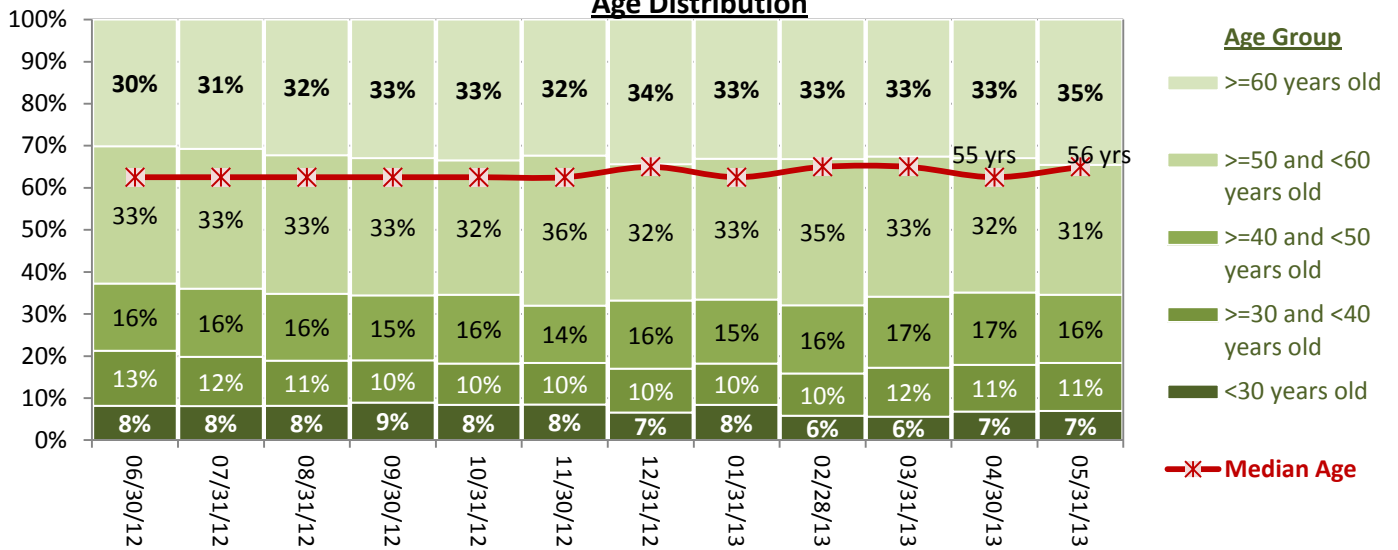
**Gender Distribution (5/31/13)**



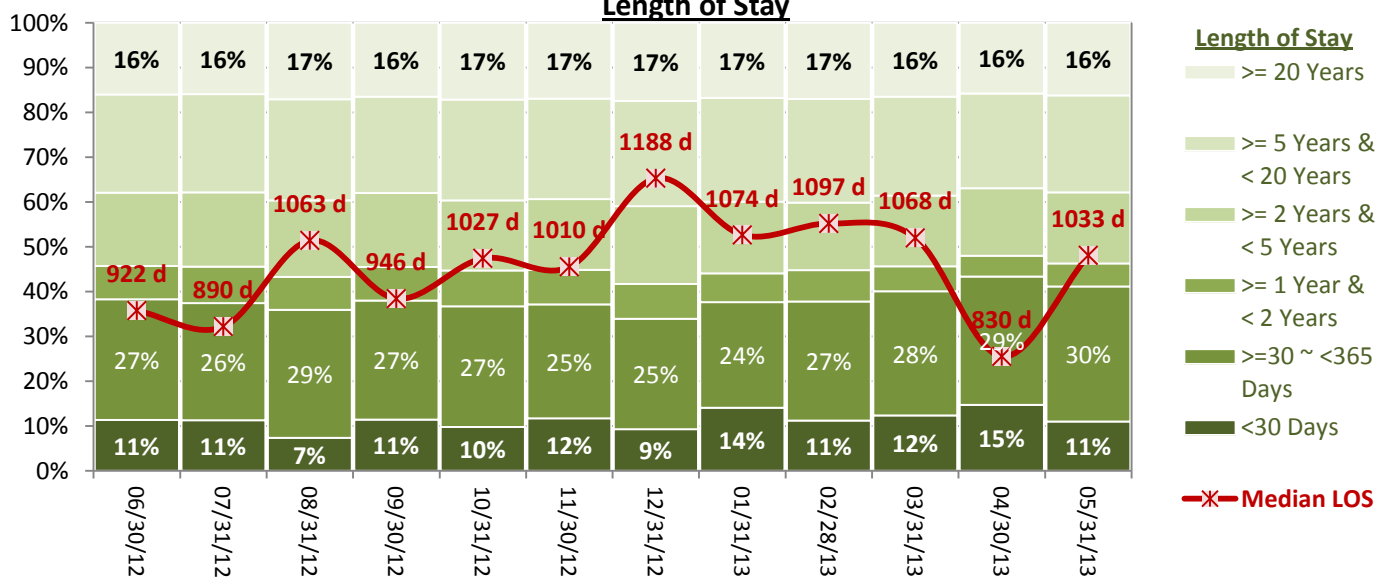
**# of Individuals by Legal Status (5/31/13)**



**Age Distribution**



**Length of Stay**



## Performance Related Information for Staff &amp; Managers

## 1. Census, Admissions, Discharges &amp; Transfers

Data Source: Avatar

Updated as of 06/17/13

Category	Jun-12	Jul-12	Aug-12	Sep-12	Oct-12	Nov-12	Dec-12	Jan-13	Feb-13	Mar-13	Apr-13	May-13	Monthly Average	Total (12mths)	Figure	
Admissions	Civil	12	16	12	15	12	18	14	22	14	23	19	17	16	194	Figure 1
	Forensic	22	18	14	19	19	18	11	17	14	20	25	14	18	211	
	<b>Total</b>	<b>34</b>	<b>34</b>	<b>26</b>	<b>34</b>	<b>31</b>	<b>36</b>	<b>25</b>	<b>39</b>	<b>28</b>	<b>43</b>	<b>44</b>	<b>31</b>	<b>34</b>	<b>405</b>	
Discharges	Civil	11	17	21	9	12	20	16	21	17	21	13	21	17	199	Figure 2
	Forensic	14	16	18	16	23	19	22	14	15	14	19	17	17	207	
	<b>Total</b>	<b>25</b>	<b>33</b>	<b>39</b>	<b>25</b>	<b>35</b>	<b>39</b>	<b>38</b>	<b>35</b>	<b>32</b>	<b>35</b>	<b>32</b>	<b>38</b>	<b>34</b>	<b>406</b>	
Net Gain During Month	Civil	1	-1	-9	6	0	-2	-2	1	-3	2	6	-4		-5	
	Forensic	8	2	-4	3	-4	-1	-11	3	-1	6	6	-3		4	
	<b>Total</b>	<b>9</b>	<b>1</b>	<b>-13</b>	<b>9</b>	<b>-4</b>	<b>-3</b>	<b>-13</b>	<b>4</b>	<b>-4</b>	<b>8</b>	<b>12</b>	<b>-7</b>		<b>-1</b>	
All Individuals on Roll at End of Month	<b>282</b>	<b>283</b>	<b>270</b>	<b>279</b>	<b>275</b>	<b>272</b>	<b>259</b>	<b>263</b>	<b>259</b>	<b>267</b>	<b>279</b>	<b>272</b>	<b>272</b>			
a. Present on Unit	275	277	259	275	270	270	255	259	254	261	273	267	266			
b. On AL	5	4	10	4	5	2	4	4	4	5	4	4	5			
c. On UL	2	2	1	0	0	0	0	0	1	1	2	1	1			
All Individuals on Roll: Daily Average during Month*	<b>278</b>	<b>282</b>	<b>276</b>	<b>273</b>	<b>278</b>	<b>273</b>	<b>265</b>	<b>262</b>	<b>259</b>	<b>262</b>	<b>267</b>	<b>274</b>	<b>271</b>			
a. Present on Unit	271	276	270	266	272	267	260	258	255	258	264	270	266		Figure 3	
b. On AL	5	4	5	7	6	6	5	3	4	3	2	3	4			
c. On UL	2	2	1	0	0	0	0	1	0	1	1	1	0			
Patient Days**	<b>8132</b>	<b>8568</b>	<b>8358</b>	<b>7988</b>	<b>8430</b>	<b>8024</b>	<b>8059</b>	<b>8010</b>	<b>7152</b>	<b>8011</b>	<b>7918</b>	<b>8370</b>	<b>8085</b>	<b>97020</b>		
Inter-Unit Transfers during Month	<b>6</b>	<b>3</b>	<b>5</b>	<b>10</b>	<b>7</b>	<b>11</b>	<b>7</b>	<b>8</b>	<b>3</b>	<b>17</b>	<b>17</b>	<b>8</b>	<b>9</b>	<b>102</b>	Figure 4	
Medical Leaves Initiated during Month	29	17	21	24	29	17	9	24	23	12	10	17	19	232		
Emergency	46	43	16	33	16	24	30	23	16	22	32	23	27	324		
Non-Emer	<b>75</b>	<b>60</b>	<b>37</b>	<b>57</b>	<b>45</b>	<b>41</b>	<b>39</b>	<b>47</b>	<b>39</b>	<b>34</b>	<b>42</b>	<b>40</b>	<b>46</b>	<b>556</b>		
Non-Medical Leaves Initiated during Month	<b>142</b>	<b>126</b>	<b>95</b>	<b>103</b>	<b>95</b>	<b>104</b>	<b>96</b>	<b>85</b>	<b>85</b>	<b>70</b>	<b>89</b>	<b>80</b>	<b>98</b>	<b>1170</b>		
UL Initiated during Month	<b>2</b>	<b>3</b>	<b>1</b>	<b>1</b>	<b>4</b>	<b>2</b>	<b>3</b>	<b>1</b>	<b>2</b>	<b>4</b>	<b>2</b>	<b>2</b>	<b>2</b>	<b>27</b>		
Total Unique Patients Served during Month	<b>306</b>	<b>316</b>	<b>309</b>	<b>302</b>	<b>310</b>	<b>306</b>	<b>297</b>	<b>298</b>	<b>298</b>	<b>294</b>	<b>310</b>	<b>310</b>	<b>305</b>			
30 Day Readmission***	Civil	0	0	1	2	0	2	2	3	0	2	3		1	15	
	Forensic	0	1	0	0	1	0	0	0	1	1	0		0	4	
	<b>Total</b>	<b>0</b>	<b>1</b>	<b>1</b>	<b>2</b>	<b>1</b>	<b>2</b>	<b>2</b>	<b>3</b>	<b>1</b>	<b>3</b>	<b>3</b>		<b>2</b>	<b>19</b>	

\* This is the average number of individuals served on a given day for the respective month. Due to rounding from average calculation, numbers from its subcategories a, b, & c may not add up to the total number on this row.

\*\* It counts the number of patients who are present on the unit and excludes those on authorized or unauthorized leave at 11:59pm on a given day.

\*\*\* Number of patients returning within 30 days of discharges that occurred during month.

## Performance Related Information for Staff &amp; Managers

## 2. Key Performance Indicators

Data Source: UI DB, ADR DB, Restraint/Seclusion Log, and Avatar

Updated as of 06/17/13

Category	Jun-12	Jul-12	Aug-12	Sep-12	Oct-12	Nov-12	Dec-12	Jan-13	Feb-13	Mar-13	Apr-13	May-13	Monthly Average	NPR* (Sep-11)	Figure
30 Day Readmit (Discharge Cohort)**	Civil	0.0%	0.0%	4.8%	22.2%	0.0%	10.0%	12.5%	14.3%	0.0%	9.5%	23.1%		8.2%	Figure 5
	Forensic	0.0%	6.3%	0.0%	0.0%	4.3%	0.0%	0.0%	0.0%	6.7%	7.1%	0.0%	2.1%		
	Combined	0.0%	3.0%	2.6%	8.0%	2.9%	5.1%	5.3%	8.6%	3.1%	8.6%	9.4%	5.1%	6.9%	
Number of Unusual Incidents	157	165	158	175	159	182	171	198	216	235	234	292	195		Figure 6
UI by Severity	Catastrophe	0	0	0	0	0	0	0	0	0	0	0	0		Figure 7
	High	35	30	16	13	24	26	18	26	17	19	15	22	22	
	Medium	51	28	40	54	58	63	59	60	87	106	89	118	68	
	Low	71	107	102	108	77	93	94	112	112	110	130	152	106	
Patient Unusual Incident Rate	18.9	17.7	18.1	20.2	17.0	21.8	18.7	21.8	28.1	27.8	27.2	33.6	22.5		Figure 8
Selected Types of Incidents	Physical Assault	34	40	35	40	32	39	37	31	26	32	35	72	38	Figure 9
	Psych Emergency	6	5	7	7	13	15	17	15	13	9	15	31	13	
	Fall	21	25	20	22	9	15	21	24	17	16	16	34	20	
	Injury	26	33	34	25	22	32	29	30	24	20	22	47	29	
Physical Assaults by Severity	High	6	8	3	2	6	8	4	4	1	3	2	9	5	Figure 10
	Medium	17	4	14	7	11	13	15	12	10	14	10	29	13	
	Low	11	28	18	31	15	18	18	15	15	15	23	34	20	
Patient Injury Rate***	0.49	0.00	0.48	0.50	0.47	0.25	0.12	0.12	0.00	0.00	0.00	0.12	0.22	0.34	Figure 11
Patients with Major Injuries***	4	0	4	4	4	2	1	1	0	0	0	1	2		
Total Patients Injured***	21	21	31	23	15	22	24	20	9	12	12	28	20		
Total Staff Injured***	9	19	7	4	11	11	8	11	15	12	10	18	11		Figure 12
Elopement Rate	0.25	0.35	0.12	0.13	0.47	0.25	0.37	0.12	0.28	0.50	0.25	0.24	0.38	0.12	Figure 13
Medication Variance Rate	1.11	0.23	1.08	1.00	1.30	1.50	0.50	1.87	6.01	3.50	2.53	4.18	2.02		Figure 14
Adverse Drug Reaction Rate	1.35	0.70	1.20	0.63	1.19	1.37	0.99	1.75	1.54	1.87	1.52	0.48	1.21		Figure 15
Missing Med-Admin Documentation	0.34%	0.40%	0.27%	0.44%	0.45%	0.36%	0.32%	0.34%	0.37%	0.34%	0.32%	0.64%	0.38%		Figure 16
Percent of Patients Restrained	0.3%	0.6%	0.3%	0.0%	0.0%	0.0%	0.3%	0.0%	0.0%	0.0%	0.0%	0.0%	0.1%	5.7%	Figure 18
Percent of Patients Secluded	0.7%	0.3%	0.0%	0.0%	0.3%	0.7%	0.7%	1.3%	0.7%	0.3%	1.9%	1.9%	0.7%	2.4%	
Restraint Hours Rate	0.005	0.001	0.010	0.000	0.000	0.000	0.002	0.000	0.000	0.000	0.000	0.000	0.002	0.65	Figure 19
Seclusion Hours Rate	0.057	0.005	0.000	0.000	0.038	0.016	0.049	0.043	0.042	0.005	0.054	0.038	0.029	0.55	

\* National Public Rate, NASMHPD Research Institute, National Research Institute (NRI), Data as of June 2012, Published in January 2013.

\*\* Percentage of patients returning within 30 days of discharges that occurred during month

\*\*\* Refer to the next page [UI &amp; Medication]

\*\*\*\* As of September 2012, we are temporarily removing the emergency involuntary medication administration data from PRISM because we discovered a technical glitch in Avatar that made this data inaccurate. A fix is under way and this indicator will be reported again as reliable data becomes available.

## Performance Related Information for Staff &amp; Managers

## 3. Unusual Incident &amp; Medication

Data Source: UI DB, ADR DB, and Avatar

Updated as of 06/17/13

Category	Jun-12	Jul-12	Aug-12	Sep-12	Oct-12	Nov-12	Dec-12	Jan-13	Feb-13	Mar-13	Apr-13	May-13	Monthly Average	Total (12mths)	NPR* (Sep-11)
<b>Total Unusual Incidents**</b>	<b>157</b>	<b>165</b>	<b>158</b>	<b>175</b>	<b>159</b>	<b>182</b>	<b>171</b>	<b>198</b>	<b>216</b>	<b>235</b>	<b>234</b>	<b>292</b>	<b>195</b>	<b>2342</b>	
<b>Total Major Unusual Incidents</b>	<b>98</b>	<b>85</b>	<b>68</b>	<b>70</b>	<b>97</b>	<b>121</b>	<b>128</b>	<b>129</b>	<b>114</b>	<b>101</b>	<b>115</b>	<b>175</b>	<b>108</b>	<b>1301</b>	
<b>Patient Involved UI Only**</b>	<b>154</b>	<b>152</b>	<b>151</b>	<b>161</b>	<b>143</b>	<b>175</b>	<b>151</b>	<b>175</b>	<b>201</b>	<b>223</b>	<b>215</b>	<b>281</b>	<b>182</b>	<b>2182</b>	
<i>Patient UI Rate</i>	<i>18.9</i>	<i>17.7</i>	<i>18.1</i>	<i>20.2</i>	<i>17.0</i>	<i>21.8</i>	<i>18.7</i>	<i>21.8</i>	<i>28.1</i>	<i>27.8</i>	<i>27.2</i>	<i>33.6</i>	<b>22.5</b>		
<b>Unique Patients Involved in UI**</b>	<b>105</b>	<b>95</b>	<b>97</b>	<b>108</b>	<b>109</b>	<b>107</b>	<b>95</b>	<b>110</b>	<b>117</b>	<b>117</b>	<b>108</b>	<b>126</b>	<b>108</b>	<b>1294</b>	
<b>Selected Types of Incidents</b>															
Physical Assault	34	40	35	40	32	39	37	31	26	32	35	72	<b>38</b>	<b>453</b>	
Psych Emergency	6	5	7	7	13	15	17	15	13	9	15	31	<b>13</b>	<b>153</b>	
Fall	21	25	20	22	9	15	21	24	17	16	16	34	<b>20</b>	<b>240</b>	
Injury	26	33	34	25	22	32	29	30	24	20	22	47	<b>29</b>	<b>344</b>	
<b>UI by Severity</b>															
Catastrophe	0	0	0	0	0	0	0	0	0	0	0	0	<b>0</b>	<b>0</b>	
High	35	30	16	13	24	26	18	26	17	19	15	22	<b>22</b>	<b>261</b>	
Medium	51	28	40	54	58	63	59	60	87	106	89	118	<b>68</b>	<b>813</b>	
Low	71	107	102	108	77	93	94	112	112	110	130	152	<b>106</b>	<b>1268</b>	
<b>Physical Assaults by Severity</b>															
High	6	8	3	2	6	8	4	4	1	3	2	9	<b>5</b>	<b>56</b>	
Medium	17	4	14	7	11	13	15	12	10	14	10	29	<b>13</b>	<b>156</b>	
Low	11	28	18	31	15	18	18	15	15	15	23	34	<b>20</b>	<b>241</b>	
<b>Total Patients Injured***</b>	<b>21</b>	<b>21</b>	<b>31</b>	<b>23</b>	<b>15</b>	<b>22</b>	<b>24</b>	<b>20</b>	<b>9</b>	<b>12</b>	<b>12</b>	<b>28</b>	<b>20</b>	<b>238</b>	
<b>Patients with Major Injuries***</b>	<b>4</b>	<b>0</b>	<b>4</b>	<b>4</b>	<b>4</b>	<b>2</b>	<b>1</b>	<b>1</b>	<b>0</b>	<b>0</b>	<b>0</b>	<b>1</b>	<b>2</b>	<b>21</b>	
<i>Patient Injury Rate***</i>	<i>0.49</i>	<i>0.00</i>	<i>0.48</i>	<i>0.50</i>	<i>0.47</i>	<i>0.25</i>	<i>0.12</i>	<i>0.12</i>	<i>0.00</i>	<i>0.00</i>	<i>0.00</i>	<i>0.12</i>	<b>0.22</b>		<b>0.34</b>
<b>Total Staff Injured**</b>	<b>9</b>	<b>19</b>	<b>7</b>	<b>4</b>	<b>11</b>	<b>11</b>	<b>8</b>	<b>11</b>	<b>15</b>	<b>12</b>	<b>10</b>	<b>18</b>	<b>11</b>		
<b>Total UL Incident Reports</b>	<b>4</b>	<b>3</b>	<b>4</b>	<b>3</b>	<b>3</b>	<b>2</b>	<b>5</b>	<b>4</b>	<b>2</b>	<b>3</b>	<b>2</b>	<b>2</b>	<b>3</b>	<b>37</b>	
<b>Total ULs Documented in Avatar</b>	<b>2</b>	<b>3</b>	<b>1</b>	<b>1</b>	<b>4</b>	<b>2</b>	<b>3</b>	<b>1</b>	<b>2</b>	<b>4</b>	<b>2</b>	<b>2</b>	<b>2</b>		
<i>Elopement Rate</i>	<i>0.25</i>	<i>0.35</i>	<i>0.12</i>	<i>0.13</i>	<i>0.47</i>	<i>0.25</i>	<i>0.37</i>	<i>0.12</i>	<i>0.28</i>	<i>0.50</i>	<i>0.25</i>	<i>0.24</i>	<b>0.38</b>		<b>0.12</b>
<b>Med Variance (MV) Reports**</b>	<b>9</b>	<b>2</b>	<b>9</b>	<b>8</b>	<b>11</b>	<b>12</b>	<b>4</b>	<b>15</b>	<b>43</b>	<b>28</b>	<b>20</b>	<b>35</b>	<b>16</b>	<b>196</b>	
<i>MV Rate</i>	<i>1.11</i>	<i>0.23</i>	<i>1.08</i>	<i>1.00</i>	<i>1.30</i>	<i>1.50</i>	<i>0.50</i>	<i>1.87</i>	<i>6.01</i>	<i>3.50</i>	<i>2.53</i>	<i>4.18</i>	<b>2.02</b>		
<b>Adverse Drug Reactions Reports</b>	<b>11</b>	<b>6</b>	<b>10</b>	<b>5</b>	<b>10</b>	<b>11</b>	<b>8</b>	<b>14</b>	<b>11</b>	<b>15</b>	<b>12</b>	<b>4</b>	<b>10</b>	<b>117</b>	
<i>ADR Rate</i>	<i>1.35</i>	<i>0.70</i>	<i>1.20</i>	<i>0.63</i>	<i>1.19</i>	<i>1.37</i>	<i>0.99</i>	<i>1.75</i>	<i>1.54</i>	<i>1.87</i>	<i>1.52</i>	<i>0.48</i>	<b>1.21</b>		
<b>Total Med Administrations Scheduled</b>	<b>105239</b>	<b>108563</b>	<b>107540</b>	<b>104812</b>	<b>112293</b>	<b>107901</b>	<b>111670</b>	<b>110726</b>	<b>97488</b>	<b>108150</b>	<b>103057</b>	<b>107694</b>		<b>1285133</b>	
<b>Total Missing Documentations</b>	<b>354</b>	<b>433</b>	<b>290</b>	<b>456</b>	<b>505</b>	<b>393</b>	<b>356</b>	<b>375</b>	<b>356</b>	<b>370</b>	<b>326</b>	<b>690</b>		<b>4904</b>	
<i>Percent of Missing Documentation</i>	<i>0.34%</i>	<i>0.40%</i>	<i>0.27%</i>	<i>0.44%</i>	<i>0.45%</i>	<i>0.36%</i>	<i>0.32%</i>	<i>0.34%</i>	<i>0.37%</i>	<i>0.34%</i>	<i>0.32%</i>	<i>0.64%</i>		<b>0.38%</b>	
<b>Total STAT Orders</b>	<b>51</b>	<b>82</b>	<b>38</b>	<b>54</b>	<b>64</b>	<b>61</b>	<b>144</b>	<b>55</b>	<b>34</b>	<b>68</b>	<b>138</b>	<b>148</b>	<b>78</b>		<b>Figure 17</b>
<b>Total STAT Events****</b>			<b>22</b>	<b>28</b>	<b>35</b>	<b>35</b>	<b>77</b>	<b>30</b>	<b>23</b>	<b>38</b>	<b>71</b>	<b>71</b>	<b>43</b>		
<b>Total Individuals Involved &gt;=1 STAT</b>			<b>14</b>	<b>24</b>	<b>16</b>	<b>21</b>	<b>21</b>	<b>28</b>	<b>10</b>	<b>16</b>	<b>23</b>	<b>35</b>	<b>21</b>		
<b>Total Patients with &gt;=3 STAT Events</b>			<b>3</b>	<b>0</b>	<b>3</b>	<b>2</b>	<b>5</b>	<b>4</b>	<b>2</b>	<b>6</b>	<b>6</b>	<b>6</b>	<b>4</b>		

\* National Public Rate, NASMHPD Research Institute, National Research Institute (NRI), Data as of June 2012, Published in January 2013.

\*\* Numbers may change if any additional UI report is made after the data run date from UI database (around the 15th of the following month).

\*\*\* Injury is broadly defined to include any type of injuries regardless of the cause or severity level. The total number of patients injured represents all of the reported injuries including minor injuries treated with first aid alone. However, the patient injury rate considers only the number of patient injuries that required beyond first-aid level treatment based on the NRI definition and the patient injury rate is the number of 'major' patient injuries per every 1000 inpatient days

\*\*\*\* One STAT event may involve more than one STAT order for the same patient. Any orders placed within 15 minute timeframe are considered to belong to one STAT event.

## Performance Related Information for Staff &amp; Managers

## 4. Restraint &amp; Seclusion

Data Source: Restraint/Seclusion Log and UI DB (for # of total events and patients) and Avatar (for patient days/hours)

Updated as of 06/17/13

Category	Jun-12	Jul-12	Aug-12	Sep-12	Oct-12	Nov-12	Dec-12	Jan-13	Feb-13	Mar-13	Apr-13	May-13	Monthly Average	Total (12mths)	NPR* (Sep-11)
Number of Restraint Events	1	2	1	0	0	0	1	0	0	0	0	0	0.4	5	
Number of Unique Patients Restrained	1	2	1	0	0	0	1	0	0	0	0	0	0.4		
Percentage of Patients Restrained	0.3%	0.6%	0.3%	0.0%	0.0%	0.0%	0.3%	0.0%	0.0%	0.0%	0.0%	0.0%	0.1%		5.7%
Total Restraint Hours (h:mm)	1:00	0:13	2:00	0:00	0:00	0:00	0:20	0:00	0:00	0:00	0:00	0:00	0:17	3:33	
Restraint Hours Rate	0.005	0.001	0.010	0.000	0.000	0.000	0.002	0.000	0.000	0.000	0.000	0.000	0.002		0.65
Number of Seclusion Events	3	1	0	0	5	2	5	7	5	1	10	12	4.3	51	
Number of Unique Patients Secluded	2	1	0	0	1	2	2	4	2	1	6	6	2.3		
Percentage of Patients Secluded	0.7%	0.3%	0.0%	0.0%	0.3%	0.7%	0.7%	1.3%	0.7%	0.3%	1.9%	1.9%	0.7%		2.4%
Total Seclusion Hours (h:mm)	11:10	1:00	0:00	0:00	7:40	3:10	9:32	8:12	7:13	1:00	10:18	7:44	5:34	66:59	
Seclusion Hours Rate	0.057	0.005	0.000	0.000	0.038	0.016	0.049	0.043	0.042	0.005	0.054	0.038	0.029		0.55

\* National Public Rate, NASMHPD Research Institute, National Research Institute (NRI), Data as of June 2012, Published in January 2013.

## Performance Related Information for Staff &amp; Managers

## 5. Major Incidents by Incident Location/Unit

Data Source: UI DB

Updated as of 06/17/13

Category		Jun-12	Jul-12	Aug-12	Sep-12	Oct-12	Nov-12	Dec-12	Jan-13	Feb-13	Mar-13	Apr-13	May-13	Monthly Average	Total (12mths)	Percent
<b>Total Unusual Incidents</b>		<b>157</b>	<b>165</b>	<b>158</b>	<b>175</b>	<b>159</b>	<b>182</b>	<b>171</b>	<b>198</b>	<b>216</b>	<b>235</b>	<b>234</b>	<b>292</b>	<b>195</b>	<b>2342</b>	
<b>Total Major Incidents*</b>		<b>98</b>	<b>85</b>	<b>68</b>	<b>70</b>	<b>97</b>	<b>121</b>	<b>128</b>	<b>129</b>	<b>114</b>	<b>101</b>	<b>115</b>	<b>175</b>	<b>108</b>	<b>1301</b>	<b>100%</b>
Major Incident Location	1A	12	4	8	2	11	4	7	7	4	9	5	11	7	84	6%
	1B	10	5	6	6	10	13	10	13	16	6	10	23	11	128	10%
	1C	5	8	6	5	8	9	11	17	6	8	13	9	9	105	8%
	1D	8	9	2	6	2	13	14	17	17	14	16	12	11	130	10%
	1E	18	10	9	7	15	8	18	15	10	20	32	30	16	192	15%
	1F	11	17	4	2	7	17	12	12	13	12	8	32	12	147	11%
	1G	8	9	8	19	12	20	9	7	4	1	5	8	9	110	8%
	2A	0	3	1	4	2	3	1	5	0	1	0	3	2	23	2%
	2B	1	1	3	0	1	7	8	2	1	1	4	1	3	30	2%
	2C	5	2	2	3	9	4	12	6	8	5	3	9	6	68	5%
	2D	10	9	7	3	6	8	10	7	10	2	7	14	8	93	7%
	TLC	4	6	8	4	6	4	9	8	15	14	7	18	9	103	8%
	Other	6	2	4	9	8	11	7	13	10	8	5	5	7	88	7%
<b>Total Physical Assault Incidents</b>		<b>34</b>	<b>40</b>	<b>35</b>	<b>40</b>	<b>32</b>	<b>39</b>	<b>37</b>	<b>31</b>	<b>26</b>	<b>32</b>	<b>35</b>	<b>72</b>	<b>38</b>	<b>453</b>	<b>100%</b>
Assault Incident Location	1A	4	2	4	4	5	1	2	1	1	2	2	3	3	31	7%
	1B	0	3	3	4	1	0	2	0	0	0	2	7	2	22	5%
	1C	1	2	1	1	2	4	1	3	1	1	5	5	2	27	6%
	1D	3	4	2	3	1	9	6	10	6	9	7	6	6	66	15%
	1E	7	8	5	3	4	2	8	6	2	8	4	8	5	65	14%
	1F	4	10	2	2	5	7	2	0	3	3	1	16	5	55	12%
	1G	4	4	6	15	4	6	2	2	0	1	1	2	4	47	10%
	2A	0	0	0	0	0	0	0	0	0	0	0	0	0	0	0%
	2B	0	1	1	0	0	2	3	0	1	0	1	0	1	9	2%
	2C	3	1	1	0	2	0	2	3	0	1	1	4	2	18	4%
	2D	8	2	7	3	5	5	8	4	4	1	6	9	5	62	14%
	TLC	0	2	3	5	2	2	1	2	8	6	4	11	4	46	10%
	Other	0	1	0	0	1	1	0	0	0	0	1	1	0	5	1%

## Performance Related Information for Staff &amp; Managers

## 5. Major Incidents by Incident Location/Unit

Data Source: UI DB

Updated as of 06/17/13

Category		Jun-12	Jul-12	Aug-12	Sep-12	Oct-12	Nov-12	Dec-12	Jan-13	Feb-13	Mar-13	Apr-13	May-13	Monthly Average	Total (12mths)	Percent
<b>Total Fall Incidents</b>		<b>21</b>	<b>25</b>	<b>20</b>	<b>22</b>	<b>9</b>	<b>15</b>	<b>21</b>	<b>24</b>	<b>17</b>	<b>16</b>	<b>16</b>	<b>34</b>	<b>20</b>	<b>240</b>	<b>100%</b>
Fall Incident Location	1A	9	3	4	3	1	3	4	3	0	3	1	8	4	42	18%
	1B	4	2	5	3	2	4	6	5	7	4	2	6	4	50	21%
	1C	0	3	1	0	1	1	1	1	1	0	1	1	1	11	5%
	1D	0	4	0	0	1	1	1	0	2	1	3	0	1	13	5%
	1E	5	3	1	2	0	1	1	1	0	2	1	1	2	18	8%
	1F	0	0	0	0	0	1	0	5	0	0	0	1	1	7	3%
	1G	0	2	3	8	1	1	0	0	0	0	2	0	1	17	7%
	2A	0	1	0	0	0	2	1	2	0	0	0	1	1	7	3%
	2B	0	0	1	1	0	0	4	0	1	0	1	1	1	9	4%
	2C	0	0	0	2	1	0	1	0	2	0	0	2	1	8	3%
	2D	2	6	3	1	0	0	1	1	1	0	0	5	2	20	8%
	TLC	1	0	2	0	0	1	0	2	2	5	3	7	2	23	10%
	Other	0	1	0	2	2	0	1	4	1	1	2	1	1	15	6%
<b>Total Injury Incidents</b>		<b>26</b>	<b>33</b>	<b>34</b>	<b>25</b>	<b>22</b>	<b>32</b>	<b>29</b>	<b>30</b>	<b>24</b>	<b>20</b>	<b>22</b>	<b>47</b>	<b>29</b>	<b>344</b>	<b>100%</b>
Injury Incident Location	1A	5	1	4	2	4	0	2	2	0	1	1	1	2	23	7%
	1B	2	4	3	1	2	3	3	0	4	2	2	6	3	32	9%
	1C	0	3	1	0	2	2	1	1	0	0	1	3	1	14	4%
	1D	3	6	1	0	1	6	6	8	8	6	4	4	4	53	15%
	1E	3	2	4	3	2	1	2	6	2	4	4	4	3	37	11%
	1F	2	4	1	1	2	8	2	0	2	1	1	9	3	33	10%
	1G	3	2	5	9	3	4	2	3	0	1	2	2	3	36	10%
	2A	0	0	0	0	0	1	0	1	0	0	0	2	0	4	1%
	2B	0	0	1	0	0	0	2	0	1	0	1	0	0	5	1%
	2C	1	4	1	2	1	3	2	0	1	1	0	3	2	19	6%
	2D	5	4	7	2	1	2	3	3	0	0	1	7	3	35	10%
	TLC	0	2	5	2	2	2	2	1	3	3	2	4	2	28	8%
	Other	2	1	1	3	2	0	2	5	3	1	3	2	2	25	7%

\* Not every incident is a major incident. This counts only those incidents that were classified to be major based on the policy.

## Performance Related Information for Staff &amp; Managers

## 6. Demographic Information of Individuals in Care

Data Source: Avatar

Updated as of 06/17/13

Category	Sub-group	Jun-12	Jul-12	Aug-12	Sep-12	Oct-12	Nov-12	Dec-12	Jan-13	Feb-13	Mar-13	Apr-13	May-13	Monthly Average	Percent*
<b>Total Active (on Roll) at End of Month*</b>		<b>282</b>	<b>283</b>	<b>270</b>	<b>279</b>	<b>275</b>	<b>272</b>	<b>259</b>	<b>263</b>	<b>259</b>	<b>267</b>	<b>279</b>	<b>272</b>	<b>272</b>	
<b>Gender</b>	Female	73	70	64	71	74	72	70	71	71	77	80	78	<b>73</b>	<b>26.7%</b>
	Male	209	213	206	208	201	200	189	192	188	190	199	194	<b>199</b>	<b>73.3%</b>
<b>Age</b>	<b>Median Age (Years)</b>	<b>55 yrs</b>	<b>55 yrs</b>	<b>55 yrs</b>	<b>55 yrs</b>	<b>55 yrs</b>	<b>55 yrs</b>	<b>56 yrs</b>	<b>55 yrs</b>	<b>56 yrs</b>	<b>56 yrs</b>	<b>55 yrs</b>	<b>56 yrs</b>	<b>55 yrs</b>	
	<30 years old	23	23	22	25	23	23	17	22	15	15	19	19	<b>21</b>	<b>7.5%</b>
	>=30 and <40 years old	37	33	29	28	27	27	27	26	26	31	31	31	<b>29</b>	<b>10.8%</b>
	>=40 and <50 years old	45	46	43	43	45	37	42	40	42	45	48	44	<b>43</b>	<b>16.0%</b>
	>=50 and <60 years old	92	94	89	91	88	97	84	88	90	89	89	84	<b>90</b>	<b>33.0%</b>
	>=60 years old	85	87	87	92	92	88	89	87	86	87	92	94	<b>89</b>	<b>32.7%</b>
<b>Legal Status of Individuals on Roll at End of Month</b>	Emergency	20	21	16	22	21	19	21	20	19	22	29	31	<b>22</b>	<b>8.0%</b>
	Inpatient Commitment	26	27	26	24	23	23	21	21	21	23	21	21	<b>23</b>	<b>8.5%</b>
	Outpatient Commitment	25	20	20	21	23	21	24	23	26	23	24	18	<b>22</b>	<b>8.2%</b>
	Voluntary	41	43	42	43	46	50	46	48	46	44	45	45	<b>45</b>	<b>16.5%</b>
	<b>Civil Sub-total</b>	<b>112</b>	<b>111</b>	<b>104</b>	<b>110</b>	<b>113</b>	<b>113</b>	<b>112</b>	<b>112</b>	<b>112</b>	<b>112</b>	<b>119</b>	<b>115</b>	<b>112</b>	<b>41.3%</b>
	DC Exam	57	59	56	59	55	50	39	44	38	48	54	50	<b>51</b>	<b>18.7%</b>
	Mentally Incompetent	8	8	6	5	3	3	3	5	5	4	1	1	<b>4</b>	<b>1.6%</b>
	NGBRI - DC	91	92	91	92	91	93	92	90	92	89	90	91	<b>91</b>	<b>33.6%</b>
	NGBRI - US	10	9	9	9	9	9	9	8	8	10	10	10	<b>9</b>	<b>3.4%</b>
	NGBRI - VI	1	1	1	1	1	1	1	1	1	1	1	1	<b>1</b>	<b>0.4%</b>
Dual Commitment	1	1	1	1	1	1	1	1	1	1	2	2	<b>1</b>	<b>0.4%</b>	
Sexual Psychopath (Miller Ac	2	2	2	2	2	2	2	2	2	2	2	2	<b>2</b>	<b>0.7%</b>	
<b>Forensic Sub-total</b>	<b>170</b>	<b>172</b>	<b>166</b>	<b>169</b>	<b>162</b>	<b>159</b>	<b>147</b>	<b>151</b>	<b>147</b>	<b>155</b>	<b>160</b>	<b>157</b>	<b>160</b>	<b>58.7%</b>	
<b>Length of Stay</b>	<b>Median LOS (Days)</b>	<b>922 d</b>	<b>890 d</b>	<b>1063 d</b>	<b>946 d</b>	<b>1027 d</b>	<b>1010 d</b>	<b>1188 d</b>	<b>1074 d</b>	<b>1097 d</b>	<b>1068 d</b>	<b>830 d</b>	<b>1033 d</b>	<b>1012 d</b>	
	<b>Average LOS (Days)</b>	<b>2971 d</b>	<b>2976 d</b>	<b>3116 d</b>	<b>3030 d</b>	<b>3093 d</b>	<b>3103 d</b>	<b>3248 d</b>	<b>3152 d</b>	<b>3181 d</b>	<b>3093 d</b>	<b>2973 d</b>	<b>3065 d</b>	<b>3083 d</b>	
	<30 Days	32	32	20	32	27	32	24	37	29	33	41	30	<b>31</b>	<b>11.3%</b>
	>=30 ~ <365 Days	76	74	77	74	74	69	64	62	69	74	80	82	<b>73</b>	<b>26.8%</b>
	>= 1 Year & < 2 Years	21	23	20	21	22	21	20	17	18	15	13	14	<b>19</b>	<b>6.9%</b>
	>= 2 Years & < 5 Years	46	47	46	46	43	43	45	42	39	42	42	43	<b>44</b>	<b>16.1%</b>
	>= 5 Years & < 20 Years	62	62	61	60	62	61	61	61	60	59	59	59	<b>61</b>	<b>22.3%</b>
	>= 20 Years	45	45	46	46	47	46	45	44	44	44	44	44	<b>45</b>	<b>16.6%</b>

\* Counts the total number of individuals who are on the hospital roll at end of each month. This number serves as denominator to calculate percentage of each group.