



Government of the District of Columbia
Department of Behavioral Health (DBH)



PRISM

Performance Related Information for Staff and Managers



MARCH 2015

Office of Statistics and Reporting (OSR), 04/20/15

Table of Contents

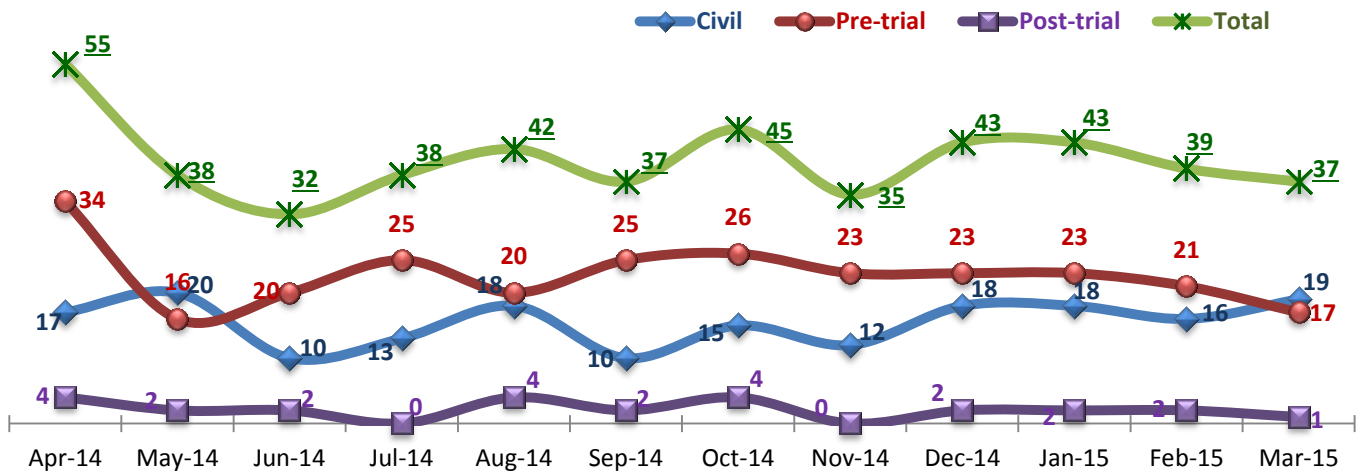
1. Admissions to SEH	1
2. Discharges from SEH	1
3. Average Daily Census.....	2
4. Transfers.....	2
5. 30-Day Readmission Rate	2
6. Unusual Incidents	3
7. Patient-Involved Unusual Incidents	3
8. Admissions vs. Patient UI Rate	4
9. Unusual Incidents by Severity.....	4
10. Selected Types of Incidents	4
11. Physical Assaults by Severity	5
12. Patient Injuries	5
13. Staff Injuries	5
14. Percent of Patients Restrained or Secluded	6
15. Restraint Hours Rate & Seclusion Hours Rate	6
16. Elopements.....	6
17. Reported Medication Variance Events.....	7
18. Reported Adverse Drug Reactions	7
19. Percent of Missing Documentation on Med-Administration.....	8
20. Medication Refusal Rate*.....	8
21. Number of STAT Events and Individuals Involved	8
22. Percentage of SiteFM Work Orders Completed within 3 Days	9
23. Demographics and Length of Stay.....	10

- Appendix 1) Table – Census, Admissions & Discharges
- Appendix 2) Table – Key Performance Indicators
- Appendix 3) Table – Unusual Incident & Medication
- Appendix 4) Table – Restraint & Seclusion
- Appendix 5) Table – Demographic Information of Individuals in Care
- Appendix 6) Table – Unusual Incidents by Unit

Key Trends: Admission, Discharge, Transfer, Census, and Readmissions (1~6)

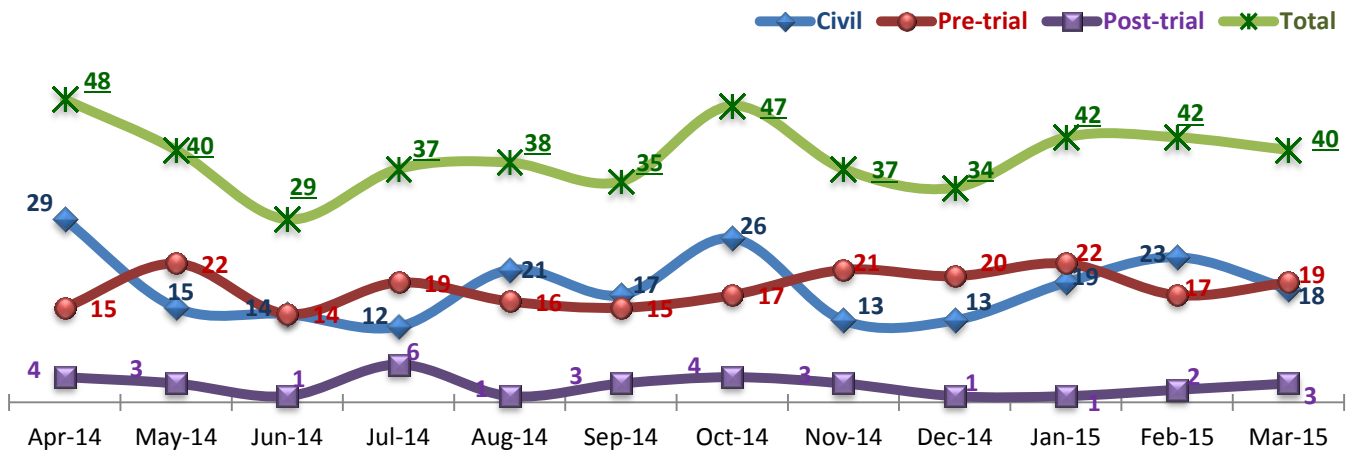
- In March 2015, the number of discharges (40) exceeded the number of admissions (37) by three (3), contributing to a decrease of the average daily census (ADC) for the last two consecutive months: ADC in March was 274 while it was 280 in February and 284 in January.
- The number of pre-trial admissions consistently recorded 20 or above each month since June 2014 through February 2015 but fell to 17 in March 2015, whereas the number of civil admissions increased in March.
- There were three (3) individuals readmitted within 30 days from February discharges, and the 30-day readmission rate for the first five months of FY15 is 7.4 %, which is much higher than the rate in FY14 (2.3%) and above the national average (NPR 6.9%)¹. A majority of 30-day readmissions (73% of 15) in FY15 were those discharged with a civil legal status, whereas only 30% of readmissions in FY14 were *Civil*.

1. Admissions to SEH



* Number of admissions to SEH inpatient program, including transfers from forensic outpatient to inpatient program.

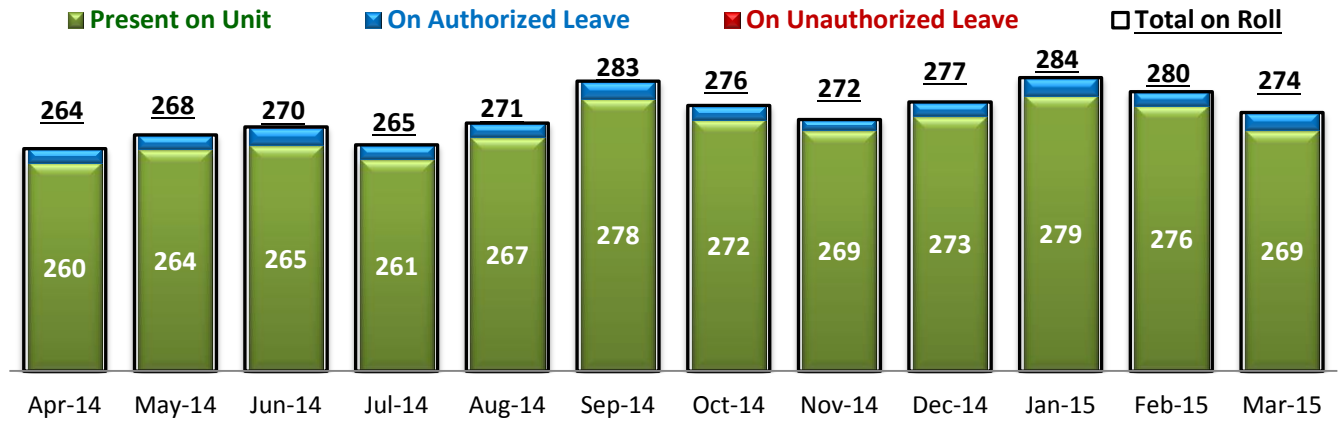
2. Discharges from SEH



* Number of discharges from SEH inpatient program, including transfers from inpatient to forensic outpatient program.

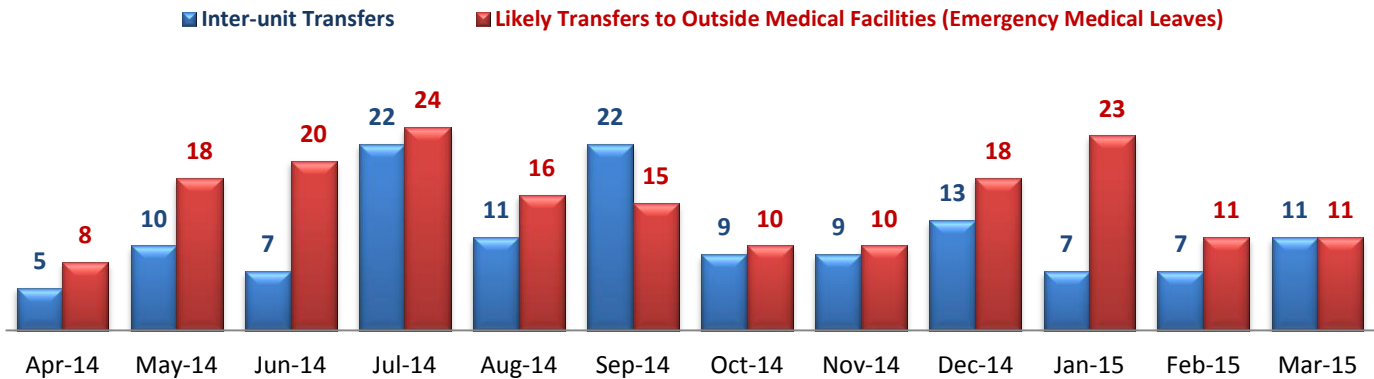
¹ NPR: National Public Rate as of June 2013 was published in November 2013 by National Association of State Mental Health Program Directors Research Institute (NRI), based on data collected from a number of state psychiatric hospitals nationwide.

3. Average Daily Census



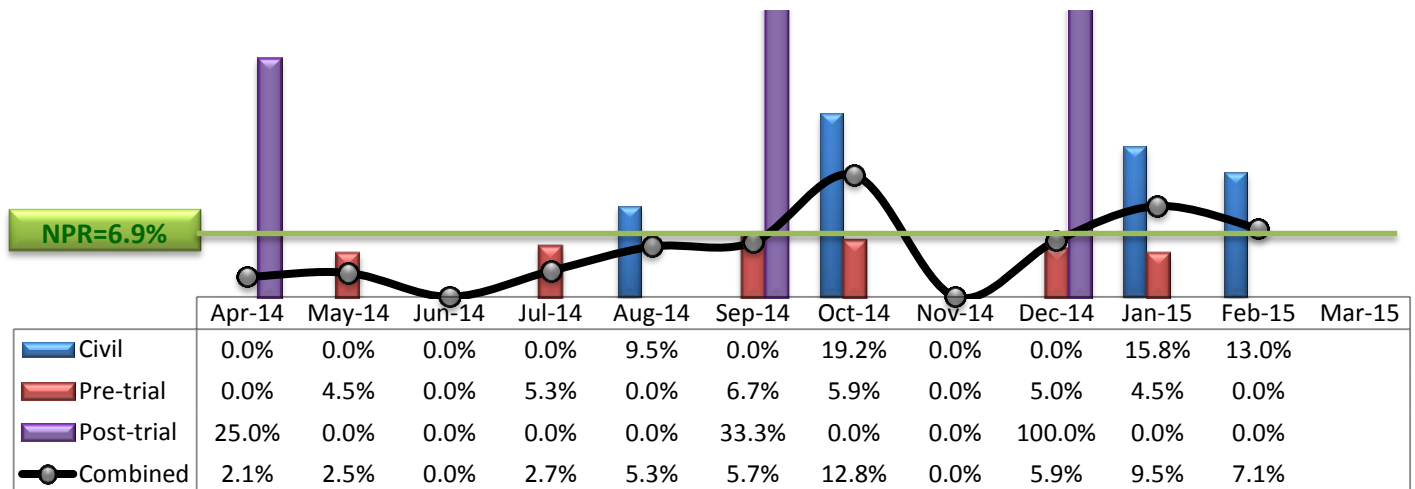
* Data above is the daily average number of individuals counted at 11:59 PM every day during each month.

4. Transfers



* Number of inter-unit transfers that occurred during month and number of emergency medical leaves that were initiated during month.

5. 30-Day Readmission Rate



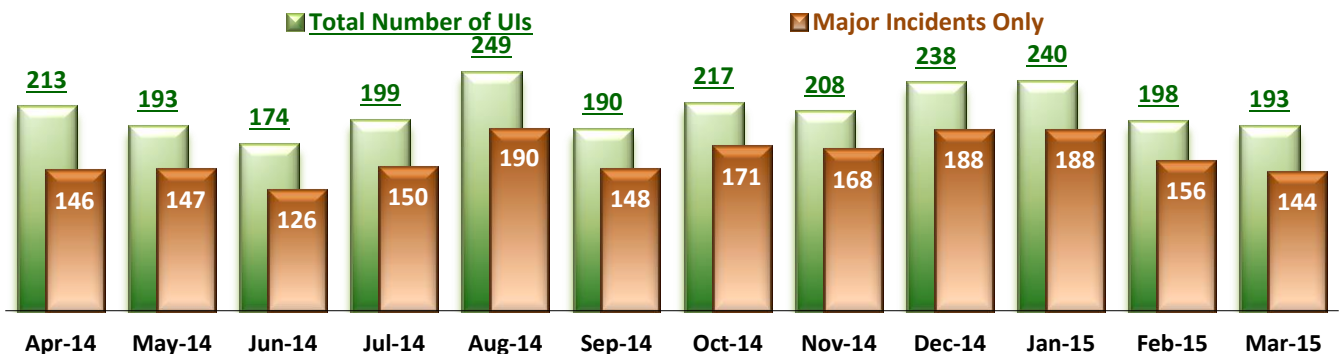
* Percent of discharges that returned to SEH within 30 days of discharges. It does not include those who may have been re-hospitalized at another psychiatric facility. This measure requires 30-day observation following discharge.

** The post-trial denominators (discharges) per month range only between one and six, making the monthly re-admission rate high when there is any. For example, in December 2014, there was only one post-trial discharge, which was readmitted within 30 days. Thus, the 30-day readmission rate for post-trial discharge for this month is 100%.

Key Trends: Unusual Incidents (6~16)

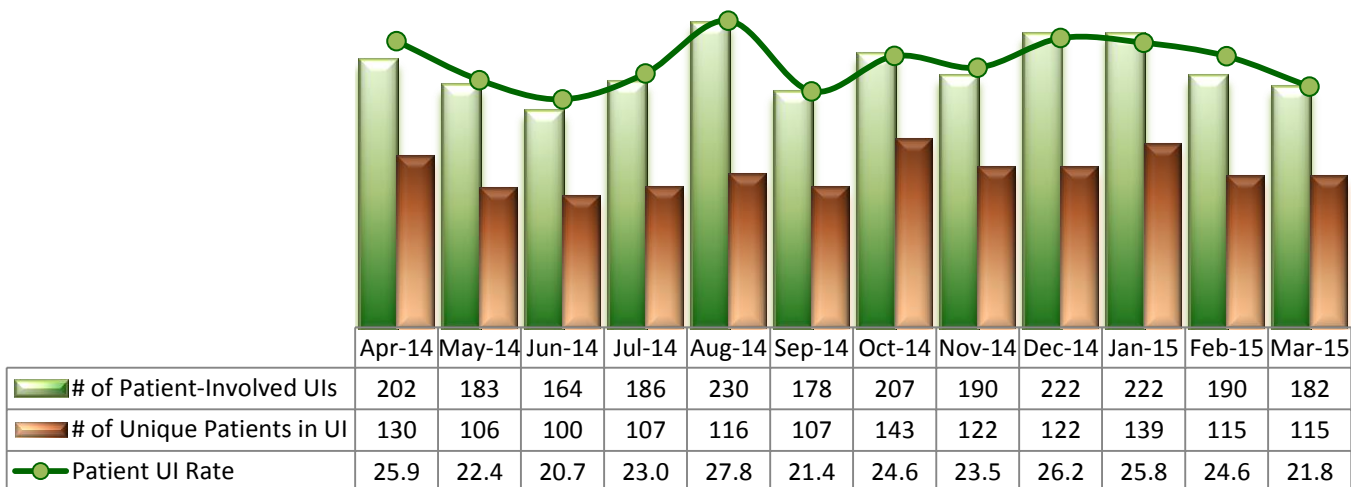
- The total number of unusual incidents (UIs) in March 2015 (193) declined from February (197) although the month of March had three (3) more days than February. Accordingly, the patient UI rate noticeably declined from 24.6 per 1,000 patient days in February to 21.8 in March, reflecting the decrease in the number of admissions during March.
- In March 2015, the number of high severity incidents remained the same, but that of medium severity incidents noticeably decreased while that of low severity incidents increased. In addition, the number of UIs involving aggressive behaviors and psychiatric emergencies significantly decreased but the frequency of physical assaults remained the same. Both patient injuries and staff injuries increased marginally.
- The use of seclusion, particularly for aggressive behaviors, increased in FY14 and continued to be at a similar level in FY15, and the percentage of unique individuals secluded is above NPR. However, the seclusion hours rate that calculates the total length of seclusion events is much lower than the NRP. The percentage of individuals restrained and the restraint hours rate at the Hospital is also far below the NPR. It should be noted that historically, the Hospital tracked mechanical restraint events only while the national standard guided by the Joint Commission includes any physical holds that are typically used briefly for involuntary administration of emergency medication or for intervention in a physical altercation. The Hospital has recently revised its restraint policy and practice to be consistent with the national standard, and is currently in the process of implementing this revised policy. The restraint data in this report does not yet include physical hold events.
- There have been no elopements since July 2014 (for nine months) and the elopement rate for FY15 is 0 while NPR is 0.13 per 1000 patient days.

6. Unusual Incidents



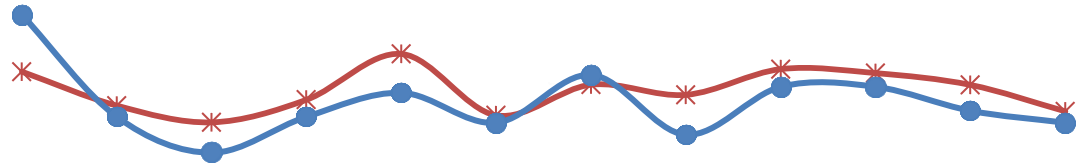
* A medication or vital sign refusal is no longer a UI since May 2014 and data above prior to May 2014 also excludes those incidents.

7. Patient-Involved Unusual Incidents



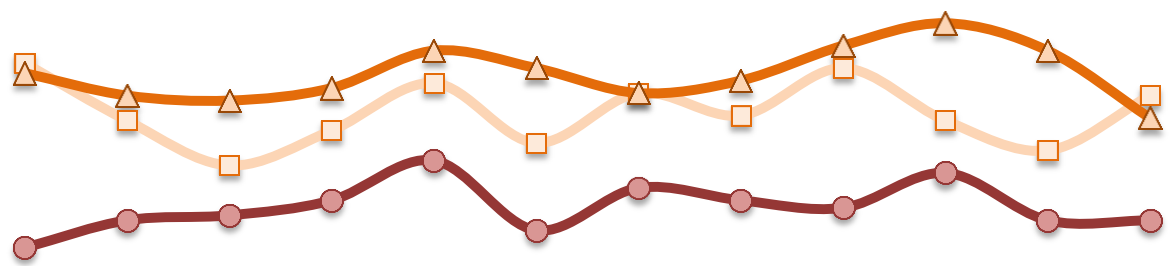
* The patient UI rate is the number of patient-involved unusual incidents reported for every 1000 inpatient days.

8. Admissions vs. Patient UI Rate



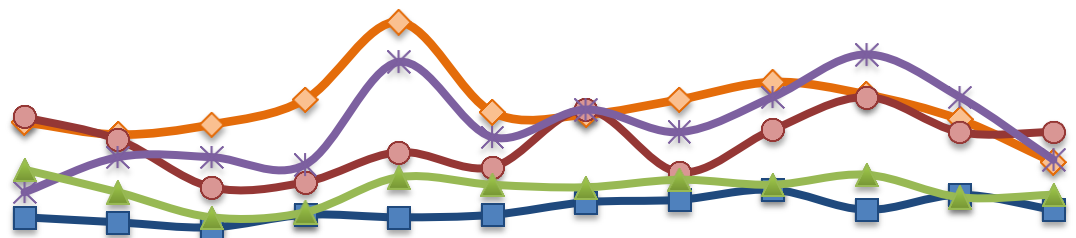
	Apr-14	May-14	Jun-14	Jul-14	Aug-14	Sep-14	Oct-14	Nov-14	Dec-14	Jan-15	Feb-15	Mar-15
—*— Patient UI Rate	25.9	22.4	20.7	23.0	27.8	21.4	24.6	23.5	26.2	25.8	24.6	21.8
—●— Admission	55	38	32	38	42	37	45	35	43	43	39	37

9. Unusual Incidents by Severity



	Apr-14	May-14	Jun-14	Jul-14	Aug-14	Sep-14	Oct-14	Nov-14	Dec-14	Jan-15	Feb-15	Mar-15
□ 1) Low	97	74	56	70	89	65	85	76	95	74	62	84
△ 2) Medium	93	84	82	87	102	95	85	90	104	113	102	75
● 3) High	23	34	36	42	58	30	47	42	39	53	34	34
◇ 4) Catstrp	0	1	0	0	0	0	0	0	0	0	0	0
Total UI	213	193	174	199	249	190	217	208	238	240	198	193

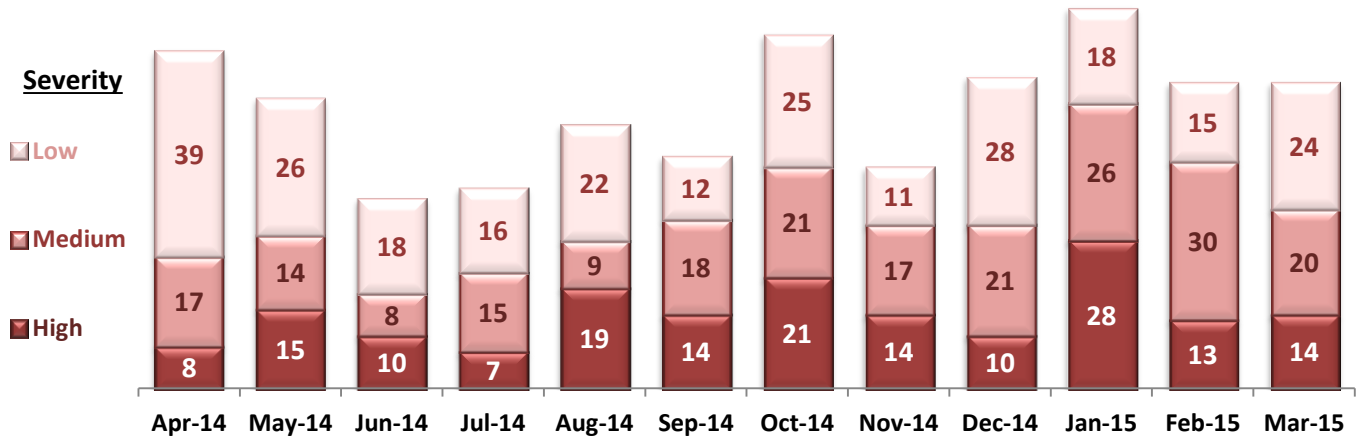
10. Selected Types of Incidents



	Apr-14	May-14	Jun-14	Jul-14	Aug-14	Sep-14	Oct-14	Nov-14	Dec-14	Jan-15	Feb-15	Mar-15
◇ Aggressive Behavior	62	57	61	71	102	66	65	71	78	73	63	46
● Physical Assault	64	55	36	38	50	44	67	42	59	72	58	58
* Pysch Emerg.	34	48	48	45	86	56	67	58	72	89	72	47
■ Fall	24	22	20	25	24	25	30	31	35	27	33	27
▲ Injury	43	34	24	26	40	37	36	39	37	41	32	33

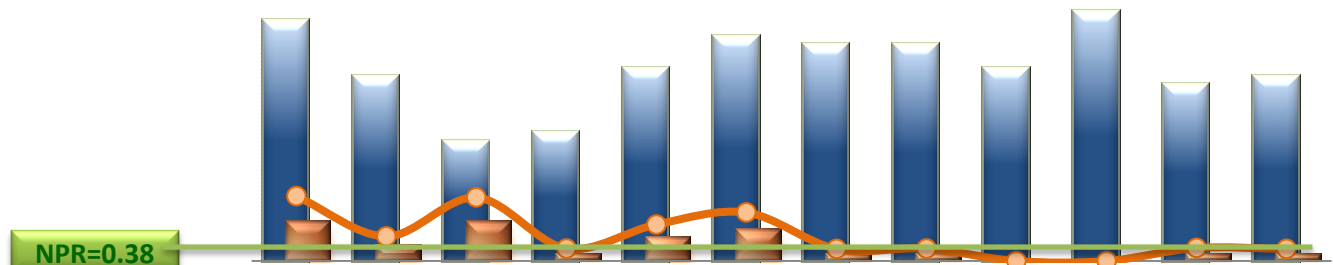
* These are incident types that are frequently reported. Some incidents may be counted in multiple categories. For example, a physical assault incident that accompanied psychiatric emergency and injury is counted under psychiatric emergency and injury as well as under physical assault. Injury is broadly defined to include any type of injuries regardless of the cause or severity level.

11. Physical Assaults by Severity



* Any physical assault that accompanies a code 13 or results in extensive injury needing off-unit treatment or transfer to ER is considered to be high severity, any physical assault that causes a minor injury that can be treated on unit is considered to be medium severity, and physical assault events that result in no injury are considered to be low severity.

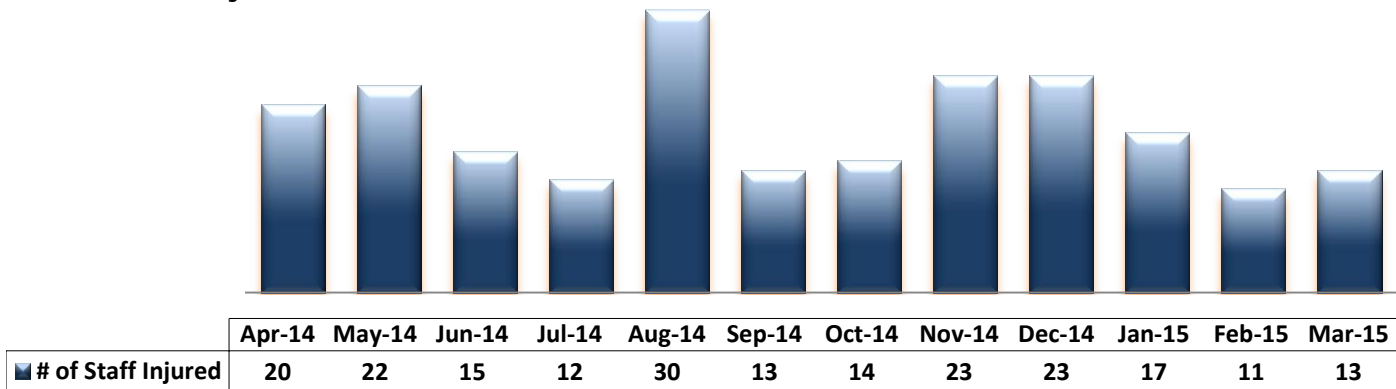
12. Patient Injuries



	Apr-14	May-14	Jun-14	Jul-14	Aug-14	Sep-14	Oct-14	Nov-14	Dec-14	Jan-15	Feb-15	Mar-15
Total Pts Injured	30	23	15	16	24	28	27	27	24	31	22	23
Major Pt Injuries*	5	2	5	1	3	4	1	1	0	0	1	1
Patient Injury Rate	0.64	0.24	0.63	0.12	0.36	0.48	0.12	0.12	0.00	0.00	0.13	0.12

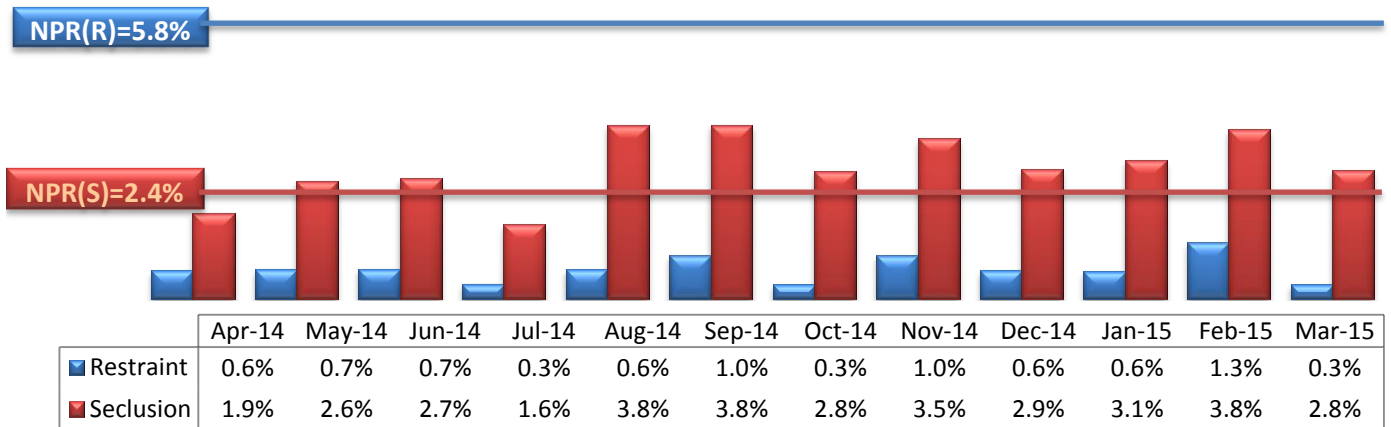
* Injury is broadly defined to include any type of injuries regardless of the cause or severity level. The total number of patients injured represents all of the reported injuries including minor injuries treated with first aid alone. However, the patient injury rate considers only the number of patient injuries that required beyond first-aid level treatment based on the NRI definition and the patient injury rate is the number of 'major' patient injuries per every 1000 inpatient days

13. Staff Injuries



* Injury is broadly defined to include any type of injuries regardless of the cause or severity level. The total number of staff injured represents all of the reported staff injuries including minor injuries treated with first aid alone.

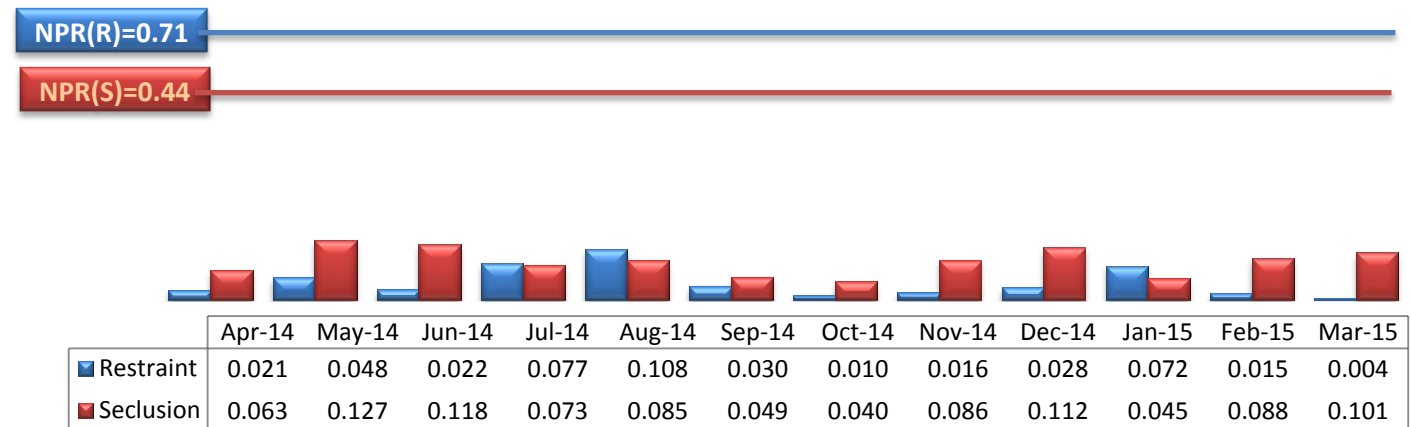
14. Percent of Patients Restrained or Secluded



* Percent of unique patients who were restrained at least once and percent of unique patients who were secluded at least once. The denominator includes all individuals who were served in care >=1 day during month.

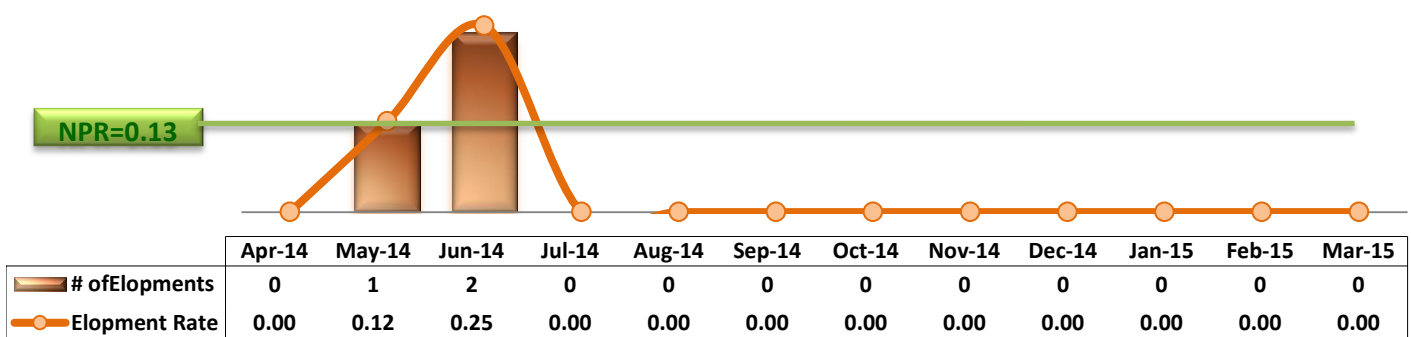
** The Hospital's restraint data herein includes only mechanical restraint events while NPR data includes physical holds. The Hospital is currently in the process of implementing a new process to report and track a physical hold as a restraint event.

15. Restraint Hours Rate & Seclusion Hours Rate



* Restraint/Seclusion Hours Rate: Number of hours spent in restraint/seclusion for every 1000 inpatient hours.

16. Elopements

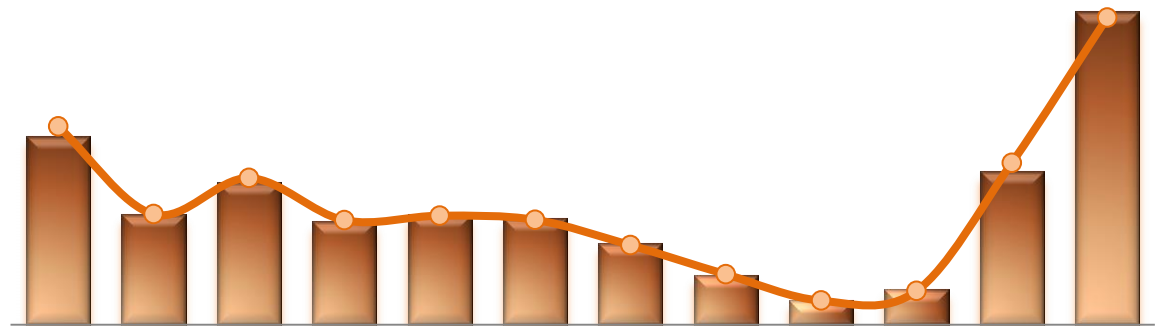


* It counts the total number of unauthorized leaves for any duration that were initiated during month and were recorded in Avatar. The elopement rate is the number of those unauthorized leaves that occurred for every 1000 inpatient days.

Key Trends: Medication Documentation, Medication Variance, ADR, and STAT (17~21)

- The number of reported MVs increased considerably for the last two consecutive months: 88 in March 2015 from 43 in February and 10 in January.
- The number of reported ADRs ranged between one and four since August 2014.
- The rate of missing documentation on medication administration noticeably declined to 0.56% in March 2015 from 0.87% in February.
- The medication refusal rate had been above 7% between October 2014 and February 2015, but it fell below 7% during March 2015.
- As the number of psychiatric emergency incidents decreased in March 2015, the number of STAT events (52) also declined from 68 in February although the number of unique individuals involved in one or more STAT event (32) increased by one. The number of IICs involved in STAT events repeatedly declined noticeably: the number of IICs with three (3) or more STAT events in March is three (3), whereas it was eight (8) in February.

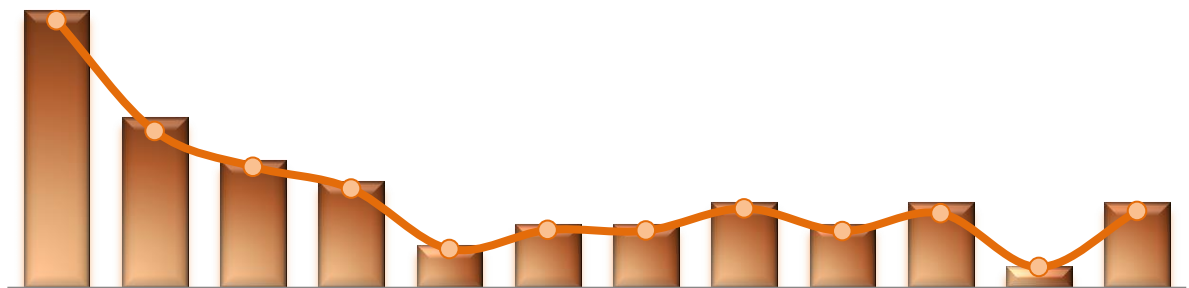
17. Reported Medication Variance Events



	Apr-14	May-14	Jun-14	Jul-14	Aug-14	Sep-14	Oct-14	Nov-14	Dec-14	Jan-15	Feb-15	Mar-15
# of MV Events	53	31	40	29	31	30	23	14	7	10	43	88
MV Rate	6.80	3.79	5.04	3.59	3.75	3.60	2.73	1.73	0.83	1.16	5.56	10.54

* MV Rate: Number of reported medication variance events that occurred for every 1000 inpatient days.

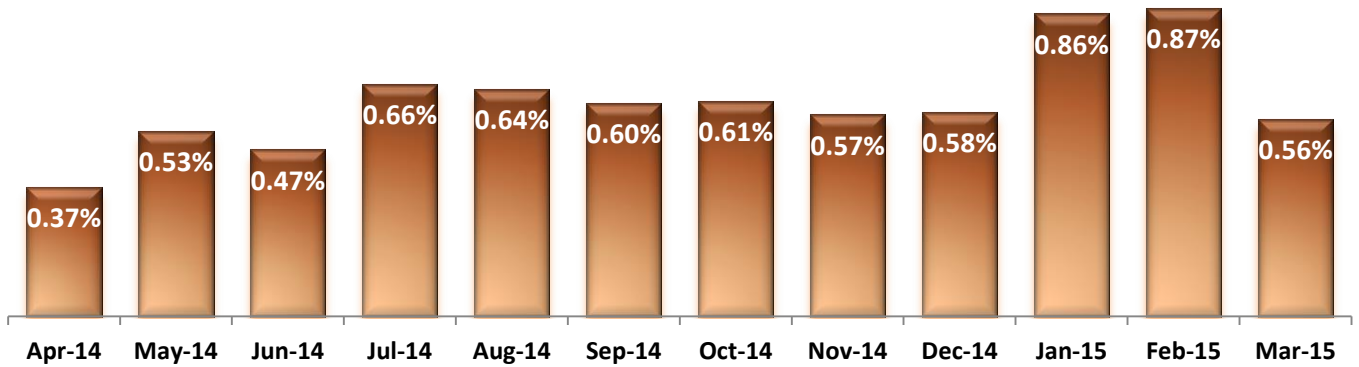
18. Reported Adverse Drug Reactions



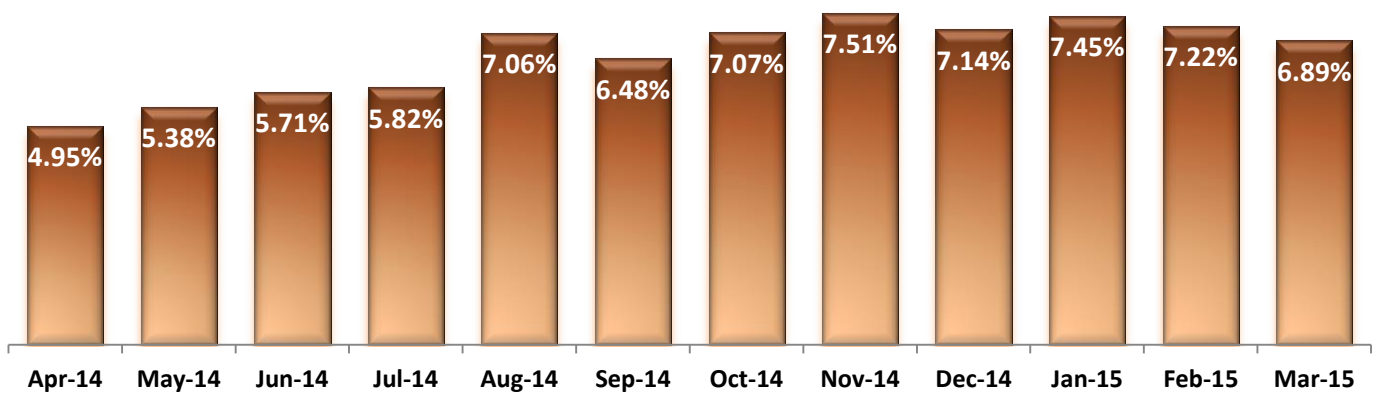
	Apr-14	May-14	Jun-14	Jul-14	Aug-14	Sep-14	Oct-14	Nov-14	Dec-14	Jan-15	Feb-15	Mar-15
# of ADRs	13	8	6	5	2	3	3	4	3	4	1	4
ADR Rate	1.67	0.98	0.76	0.62	0.24	0.36	0.36	0.50	0.35	0.46	0.13	0.48

* ADR Rate: Number of reported adverse drug reaction events that occurred for every 1000 inpatient days.

19. Percent of Missing Documentation on Med-Administration

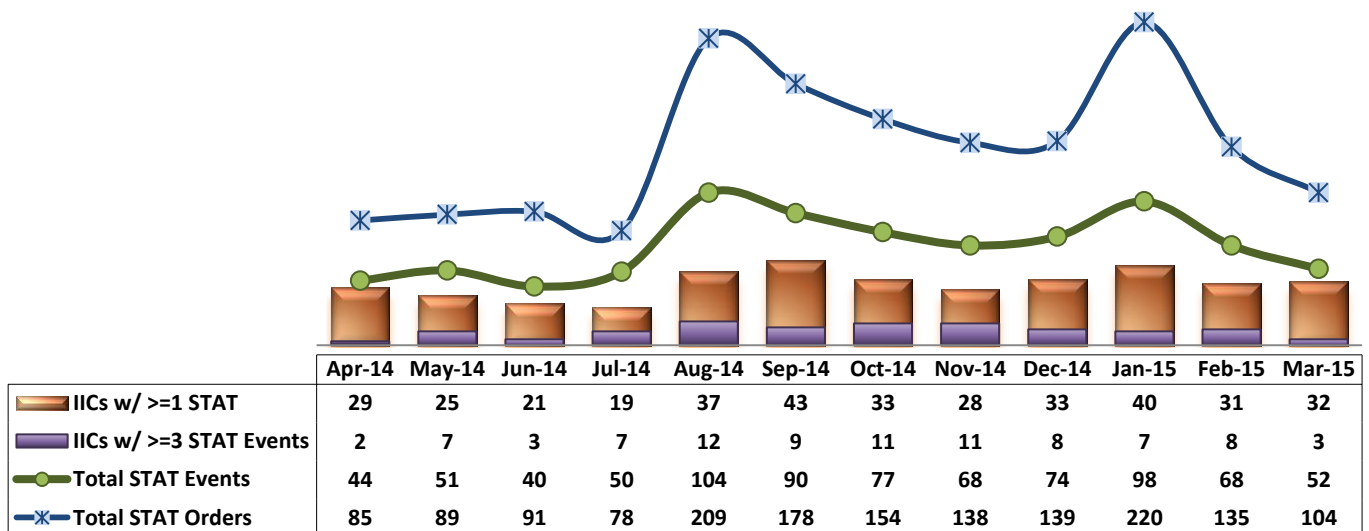


20. Medication Refusal Rate*



* Medication Refusal Rate: the number of refused medication doses divided by the total number of doses scheduled for administration.

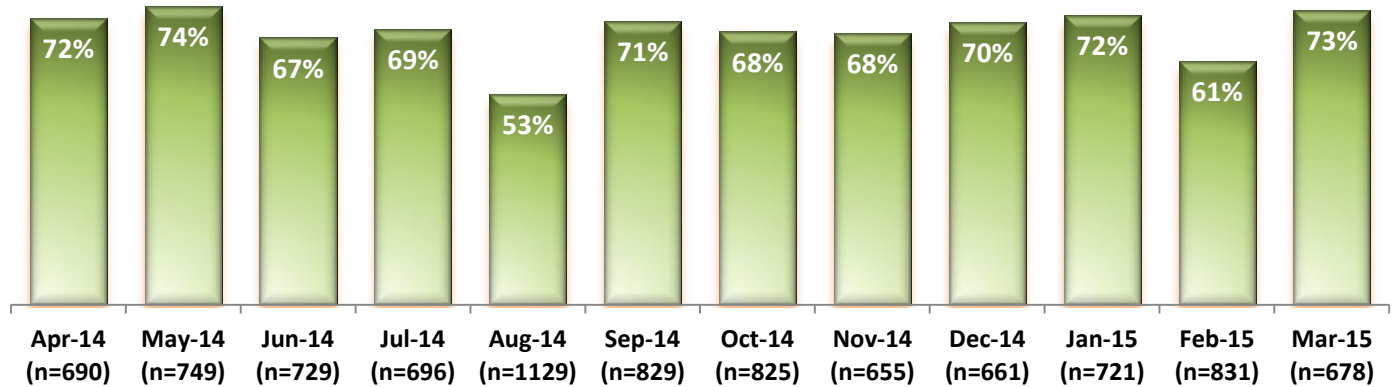
21. Number of STAT Events and Individuals Involved



Key Trends: Environment of Care (22)

- During CY2014, on average, the Hospital received a total of 773 work orders per month (or 25 per day) through SiteFM. Of those, 70% were completed within 3 days.
- In the month of March 2015, the Hospital received a total of 678 SiteFM work orders (22 per day), which is much lower than the level in February (a total of 831 or 30 per day).
- The 3-day completion rate of SiteFM work orders in March is substantially higher than that in February: 73% in March 2015 and 61% in February 2015.

22. Percentage of SiteFM Work Orders Completed within 3 Days



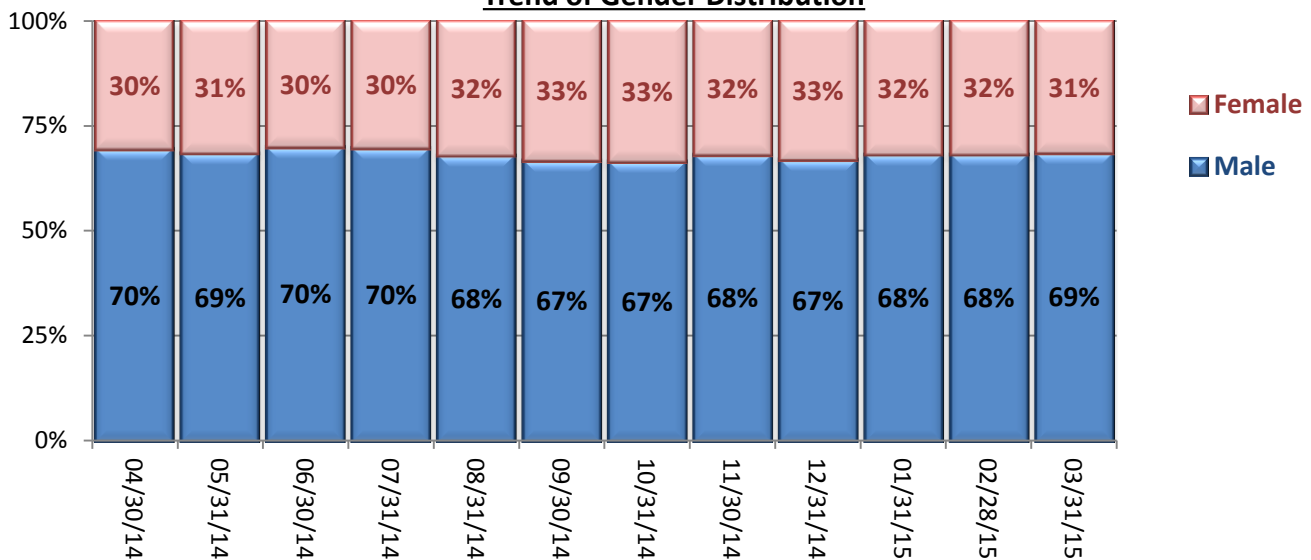
* This data has been analyzed for the first time as of early December 2014.

Key Trends: Demographics, Legal Status, and Length of Stay (23)

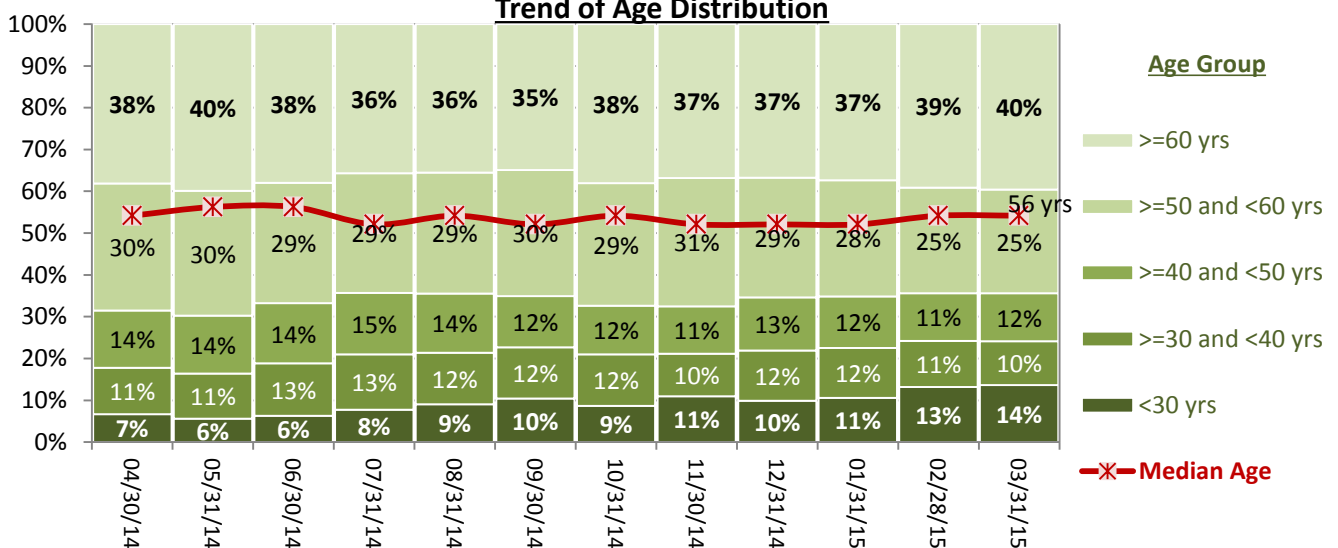
- The proportion of female individuals remaining in the Hospital’s care increased in FY14, from 26% as of October 2013 to 33% in September 2014. The proportion of females has since decreased slightly, composing 31% as of March 31, 2015.
- The proportion of individuals with 60 years or older increased for the past few months: as of March 2015, 40% of individuals remaining in care fall in this age group.
- The proportion of pre-trial population has remained at 23% for the second quarter of FY15 as the number of pre-trial admissions slowed down in the recent months.
- The median length of stay (LOS) of individuals remaining in care had been decreasing gradually since February 2014, falling to the lowest level (362 days or 12 months) as of December 31, 2014. Since then, the median LOS increased slightly and is 402 days as of February 28, 2015. In March, the median LOS (403 days) remained similar to the level in the previous month.

23. Demographics and Length of Stay

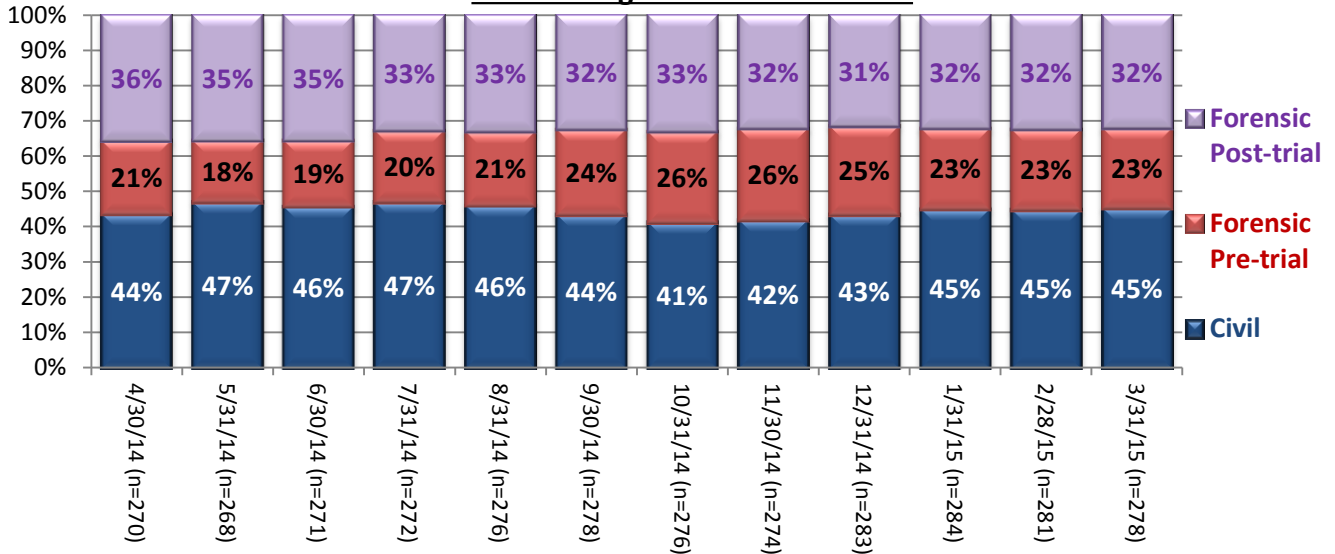
Trend of Gender Distribution



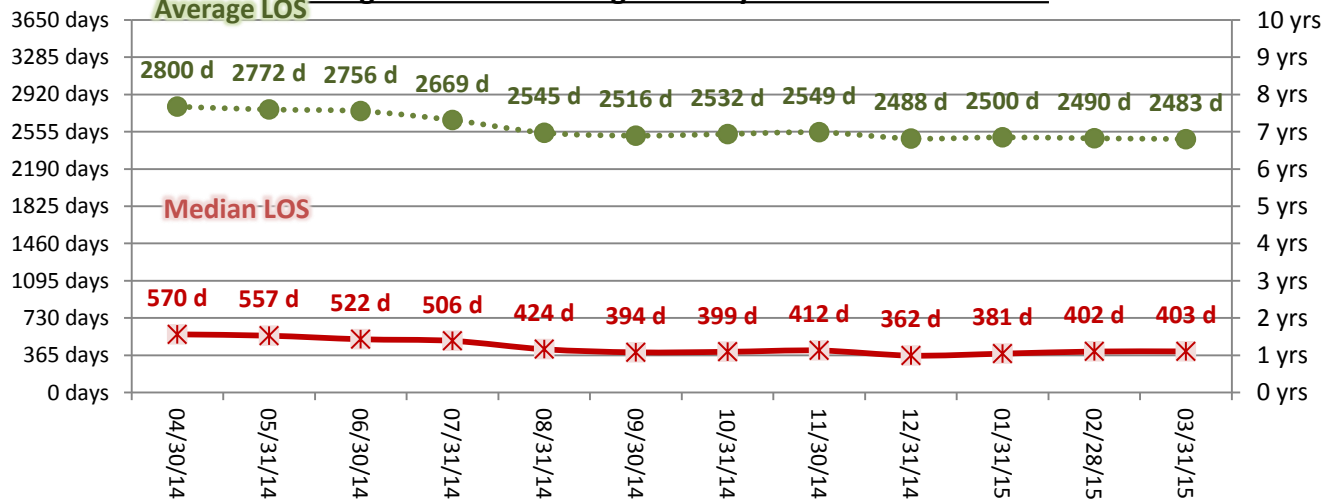
Trend of Age Distribution



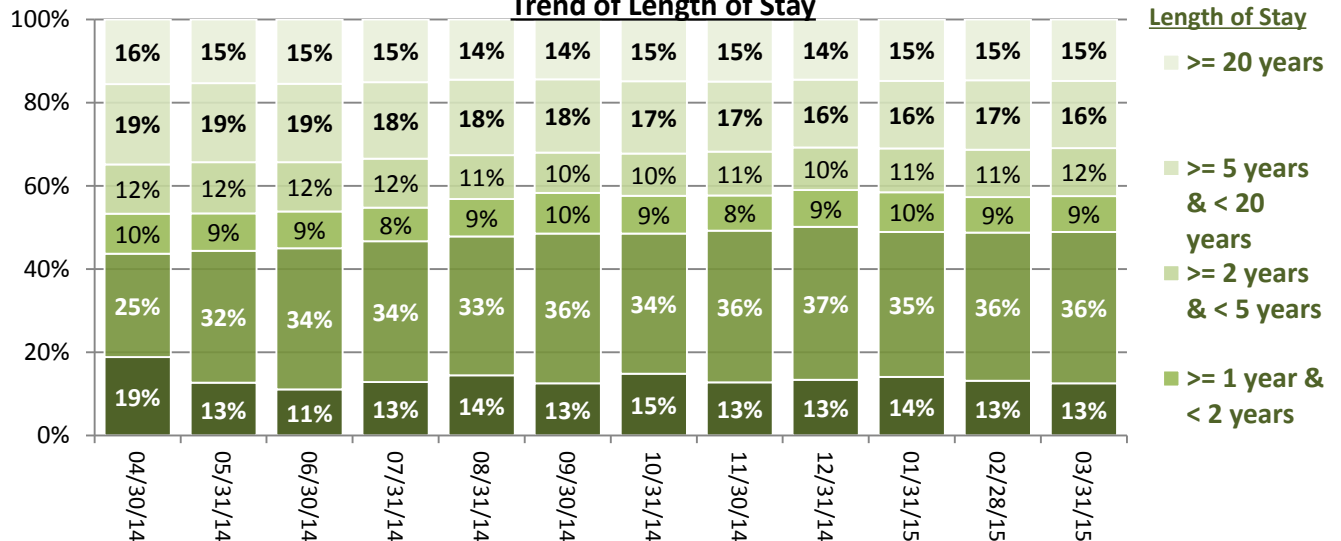
Trend of Legal Status Distribution



Average and Median Length of Stay for Individuals in Care



Trend of Length of Stay



Performance Related Information for Staff & Managers

1. Census, Admissions, Discharges & Transfers

Data Source: Avatar

Updated as of 04/10/15

Category	Apr-14	May-14	Jun-14	Jul-14	Aug-14	Sep-14	Oct-14	Nov-14	Dec-14	Jan-15	Feb-15	Mar-15	Monthly Average	Total (12mths)	Figure	
Admissions	Civil	17	20	10	13	18	10	15	12	18	18	16	19	16	186	Figure 1
	Pre-trial	34	16	20	25	20	25	26	23	23	21	17	23	23	273	
	Post-trial	4	2	2	0	4	2	4	0	2	2	2	1	2	25	
	Total	55	38	32	38	42	37	45	35	43	43	39	37	40	484	
Discharges	Civil	29	15	14	12	21	17	26	13	13	19	23	18	18	220	Figure 2
	Pre-trial	15	22	14	19	16	15	17	21	20	22	17	19	18	217	
	Post-trial	4	3	1	6	1	3	4	3	1	1	2	3	3	32	
	Total	48	40	29	37	38	35	47	37	34	42	42	40	39	469	
Net Increase During Month	Civil	-12	5	-4	1	-3	-7	-11	-1	5	-1	-7	1		-34	
	Pre-trial	19	-6	6	6	4	10	9	2	3	1	4	-2		56	
	Post-trial	0	-1	1	-6	3	-1	0	-3	1	1	0	-2		-7	
	Total	7	-2	3	1	4	2	-2	-2	9	1	-3	-3		15	
All Individuals on Roll at End of Month	270	268	271	272	276	278	276	274	283	284	281	278	276			
a. Present on Unit	268	260	267	271	270	275	272	270	281	275	274	276	272			
b. On AL	2	8	4	1	6	3	4	4	2	9	7	2	4			
c. On UL	0	0	0	0	0	0	0	0	0	0	0	0	0			
All Individuals on Roll: Daily Average during Month*	264	268	270	265	271	283	276	272	277	284	280	274	274			
a. Present on Unit	260	264	265	261	267	278	272	269	273	279	276	269	269			
b. On AL	4	4	5	4	4	5	4	3	4	5	4	5	3.8			
c. On UL	0	0.03	0.17	0	0	0	0	0	0	0	0	0	0.02			
Patient Days**	7789	8171	7941	8084	8277	8326	8422	8078	8472	8610	7738	8348	8188	98256		
Inter-Unit Transfers during Month	5	10	7	22	11	22	9	9	13	7	7	11	11	133	Figure 4	
Medical Leaves Initiated during Month	Emergency	8	18	20	24	16	15	10	10	18	23	11	11	15	184	
	Non-Emer	30	34	81	88	67	68	62	71	61	59	55	71	62	747	
	Total	38	52	101	112	83	83	72	81	79	82	66	82	78	931	
Non-Medical Leaves Initiated during Month	147	230	439	430	386	397	431	390	393	412	323	391	364	4369		
UL Initiated during Month	0	1	2	0	0	0	0	0	0	0	0	0	0	3		
Total Unique Patients Served during Month	315	306	300	305	312	312	318	310	315	326	320	317	313			
30 Day Readmission ***	Civil	0	0	0	0	2	0	5	0	0	3	3		1	13	
	Pre-trial	0	1	0	1	0	1	1	0	1	1	0		1	6	
	Post-trial	1	0	0	0	0	1	0	0	1	0	0		0	3	
	Total	1	1	0	1	2	2	6	0	2	4	3		2	22	

* This is the average number of individuals served on a given day for the respective month. Due to rounding from average calculation, numbers from its subcategories a, b, & c may not add up to the total number on this row.

** It counts the number of patients who are present on the unit and excludes those on authorized or unauthorized leave at 11:59pm on a given day.

*** Number of patients returning within 30 days of discharges that occurred during month.

Performance Related Information for Staff & Managers

2. Key Performance Indicators

Data Source: UI DB, MV DB, ADR DB, Restraint/Seclusion Log, and Avatar

Updated as of 04/10/15

Category	Apr-14	May-14	Jun-14	Jul-14	Aug-14	Sep-14	Oct-14	Nov-14	Dec-14	Jan-15	Feb-15	Mar-15	Monthly Average	NPR* (Jun-13)	Figure
30 Day Readmit (Discharge Cohort)**	Civil	0.0%	0.0%	0.0%	0.0%	9.5%	0.0%	19.2%	0.0%	0.0%	15.8%	13.0%	6.4%		Figure 5
	Pre-trial	0.0%	4.5%	0.0%	5.3%	0.0%	6.7%	5.9%	0.0%	5.0%	4.5%	0.0%	3.0%		
	Post-trial	25.0%	0.0%	0.0%	0.0%	0.0%	33.3%	0.0%	0.0%	100.0%	0.0%	0.0%	10.2%		
	Combined	2.1%	2.5%	0.0%	2.7%	5.3%	5.7%	12.8%	0.0%	5.9%	9.5%	7.1%	5.1%	6.9%	
Number of Unusual Incidents*	213	193	174	199	249	190	217	208	238	240	198	193	209		Figure 6
Patient Unusual Incident Rate	25.9	22.4	20.7	23.0	27.8	21.4	24.6	23.5	26.2	25.8	24.6	21.8	24.0		Figure 7
UI by Severity	Catastrophe	0	1	0	0	0	0	0	0	0	0	0	0		Figure 9
	High	23	34	36	42	58	30	47	42	39	53	34	34	39	
	Medium	93	84	82	87	102	95	85	90	104	113	102	75	93	
	Low	97	74	56	70	89	65	85	76	95	74	62	84	77	
Physical Assault Incident Rate	8.2	6.7	4.5	4.7	6.0	5.3	8.0	5.2	7.0	8.4	7.5	6.9	6.5		
Selected Types of Incidents	Physical Assault	64	55	36	38	50	44	67	42	59	72	58	58	54	Figure 10
	Aggressive Behav.	62	57	61	71	102	66	65	71	78	73	63	46	68	
	Psych Emergency	34	48	48	45	86	56	67	58	72	89	72	47	60	
	Fall	24	22	20	25	24	25	30	31	35	27	33	27	27	
	Injury	43	34	24	26	40	37	36	39	37	41	32	33	35	
Physical Assaults by Severity	High	8	15	10	7	19	14	21	14	10	28	13	14	13	Figure 11
	Medium	17	14	8	15	9	18	21	17	21	26	30	20	18	
	Low	39	26	18	16	22	12	25	11	28	18	15	24	21	
Patient Injury Rate***	0.64	0.24	0.63	0.12	0.36	0.48	0.12	0.12	0.00	0.00	0.13	0.12	0.24	0.38	Figure 12
Patients with Major Injuries***	5	2	5	1	3	4	1	1	0	0	1	1	2		
Total Patients Injured***	30	23	15	16	24	28	27	27	24	31	22	23	24		
Total Staff Injured***	20	22	15	12	30	13	14	23	23	17	11	13	18		Figure 13
Elopement Rate	0.00	0.12	0.25	0.00	0.00	0.00	0.00	0.00	0.00	0.00	0.00	0.00	0.03	0.13	Figure 16
Medication Variance Rate	6.80	3.79	5.04	3.59	3.75	3.60	2.73	1.73	0.83	1.16	5.56	10.54	4.06		Figure 17
Adverse Drug Reaction Rate	1.67	0.98	0.76	0.62	0.24	0.36	0.36	0.50	0.35	0.46	0.13	0.48	0.57		Figure 18
Missing Med-Admin Documentation	0.37%	0.53%	0.47%	0.66%	0.64%	0.60%	0.61%	0.57%	0.58%	0.86%	0.87%	0.56%	0.61%		Figure 19
Percent of Medication Refusal	4.95%	5.38%	5.71%	5.82%	7.06%	6.48%	7.07%	7.51%	7.14%	7.45%	7.22%	6.89%	6.55%		Figure 20
Percent of Patients Restrained	0.6%	0.7%	0.7%	0.3%	0.6%	1.0%	0.3%	1.0%	0.6%	0.6%	1.3%	0.3%	0.7%	5.8%	Figure 14
Percent of Patients Secluded	1.9%	2.6%	2.7%	1.6%	3.8%	3.8%	2.8%	3.5%	2.9%	3.1%	3.8%	2.8%	3.0%	2.4%	
Restraint Hours Rate	0.021	0.048	0.022	0.077	0.108	0.030	0.010	0.016	0.028	0.072	0.015	0.004	0.038	0.71	Figure 15
Seclusion Hours Rate	0.063	0.127	0.118	0.073	0.085	0.049	0.040	0.086	0.112	0.045	0.088	0.101	0.082	0.44	
SiteFM Work Orders Completed within 3 days	72%	74%	67%	69%	53%	71%	68%	68%	70%	72%	61%	73%	67%		Figure 22
Total SiteFM Work Orders	494	558	486	479	593	587	562	444	466	521	506	498	516	766	

* National Public Rate, NASMHPD Research Institute, National Research Institute (NRI), Data as of June 2013, Published in November 2013.

** Percentage of patients returning within 30 days of discharges that occurred during month

*** Refer to the next page [UI & Medication]

Performance Related Information for Staff & Managers

3. Unusual Incident & Medication

Data Source: UI DB, MV DB, ADR DB, and Avatar

Updated as of 04/10/15

Category		Apr-14	May-14	Jun-14	Jul-14	Aug-14	Sep-14	Oct-14	Nov-14	Dec-14	Jan-15	Feb-15	Mar-15	Monthly Average	Total (12mths)	NPR* (Jun-13)
Unusual Incidents (excluding MV)**	Total UIs	213	193	174	199	249	190	217	208	238	240	198	193	209	2512	
	Major UIs Only	146	147	126	150	190	148	171	168	188	188	156	144	160	1922	
	Pt Involved UI Only	202	183	164	186	230	178	207	190	222	222	190	182	196	2356	
	Patient UI Rate	25.9	22.4	20.7	23.0	27.8	21.4	24.6	23.5	26.2	25.8	24.6	21.8	24.0		
Unique Pts Involved in UI		130	106	100	107	116	107	143	122	122	139	115	115	119	1422	
Selected Types of Incidents	Physical Assault	64	55	36	38	50	44	67	42	59	72	58	58	54	643	
	Aggressive Behavior	62	57	61	71	102	66	65	71	78	73	63	46	68	815	
	Psych Emergency	34	48	48	45	86	56	67	58	72	89	72	47	60	722	
	Fall	24	22	20	25	24	25	30	31	35	27	33	27	27	323	
	Injury	43	34	24	26	40	37	36	39	37	41	32	33	35	422	
Physical Assault Rate		8.2	6.7	4.5	4.7	6.0	5.3	8.0	5.2	7.0	8.4	7.5	6.9	6.5		
UI by Severity	Catastrophe	0	1	0	0	0	0	0	0	0	0	0	0	0	1	
	High	23	34	36	42	58	30	47	42	39	53	34	34	39	472	
	Medium	93	84	82	87	102	95	85	90	104	113	102	75	93	1112	
	Low	97	74	56	70	89	65	85	76	95	74	62	84	77	927	
Physical Assaults by Severity	High	8	15	10	7	19	14	21	14	10	28	13	14	13	173	
	Medium	17	14	8	15	9	18	21	17	21	26	30	20	18	216	
	Low	39	26	18	16	22	12	25	11	28	18	15	24	21	254	
Total Patients Injured***		30	23	15	16	24	28	27	27	24	31	22	23	24	290	
Patients with Major Injuries***		5	2	5	1	3	4	1	1	0	0	1	1	2	24	
Patient Injury Rate***		0.64	0.24	0.63	0.12	0.36	0.48	0.12	0.12	0.00	0.00	0.13	0.12	0.24		0.38
Total Staff Injured**		20	22	15	12	30	13	14	23	23	17	11	13	18		
Total ULs Documented in Avatar		0	1	2	0	0	0	0	0	0	0	0	0	0	3	
Elopement Rate		0.00	0.12	0.25	0.00	0.00	0.00	0.00	0.00	0.00	0.00	0.00	0.00	0.03		0.13
Med Variance (MV) Reports**		53	31	40	29	31	30	23	14	7	10	43	88	33	399	
MV Rate		6.80	3.79	5.04	3.59	3.75	3.60	2.73	1.73	0.83	1.16	5.56	10.54	4.06		
Adverse Drug Reactions Reports		13	8	6	5	2	3	3	4	3	4	1	4	5	56	
ADR Rate		1.67	0.98	0.76	0.62	0.24	0.36	0.36	0.50	0.35	0.46	0.13	0.48	0.57		
Total Med Administrations Scheduled		104201	108187	104448	107179	105835	103590	105994	104198	107578	109625	96178	103742		1260755	
Total Missing Documentations		381	568	493	704	680	626	647	595	622	939	838	579		7672	
Percent of Missing Documentation		0.37%	0.53%	0.47%	0.66%	0.64%	0.60%	0.61%	0.57%	0.58%	0.86%	0.87%	0.56%		0.61%	
Total Medication Doses Refused		5163	5823	5969	6239	7472	6712	7493	7823	7676	8164	6940	7145		82619	
Percent of Medication Refusal		4.95%	5.38%	5.71%	5.82%	7.06%	6.48%	7.07%	7.51%	7.14%	7.45%	7.22%	6.89%		6.55%	
Total STAT Orders		85	89	91	78	209	178	154	138	139	220	135	104	135		Figure 21
Total STAT Events****		44	51	40	50	104	90	77	68	74	98	68	52	68		
Total Individuals Involved >=1 STAT		29	25	21	19	37	43	33	28	33	40	31	32	31		
Total Patients with >=3 STAT Events		2	7	3	7	12	9	11	11	8	7	8	3	7		

* National Public Rate, NASMHPD Research Institute, National Research Institute (NRI), Data as of June 2013, Published in November 2013.

** Numbers may change if any additional UI report is made after the data run date from UI database (around the 15th of the following month); According to the revised UI policy as of November 4, 2013, a medication variance (MV) incident became no longer considered to be an unusual incident, and a medication or vital sign refusal incident is not longer an UI as of May 2014. UI data for the past 12 months in this report has been updated to reflect this change and reanalyzed in order to show the UI trend in consistent logic.

*** Injury is broadly defined to include any type of injuries regardless of the cause or severity level. The total number of patients injured represents all of the reported injuries including minor injuries treated with first aid alone. However, the patient injury rate considers only the number of patient injuries that required beyond first-aid level treatment based on the NRI definition and the patient injury rate is the number of 'major' patient injuries per every 1000 inpatient days

**** One STAT event may involve more than one STAT order for the same patient. Any orders placed within 20 minute timeframe are considered to belong to one STAT event.
Office of Statistics and Reporting (OSR), Saint Elizabeths Hospital

Performance Related Information for Staff & Managers

4. Restraint & Seclusion

Data Source: Restraint/Seclusion Log and UI DB (for # of total events and patients) and Avatar (for patient days/hours)

Updated as of 04/10/15

Category	Apr-14	May-14	Jun-14	Jul-14	Aug-14	Sep-14	Oct-14	Nov-14	Dec-14	Jan-15	Feb-15	Mar-15	Monthly Average	Total (12mths)	NPR* (Jun-13)
Number of Restraint (Mechanical) Events	2	6	4	7	7	6	1	3	6	9	4	1	4.7	56	
Number of Unique Patients Restrained (Mechanical)	2	2	2	1	2	3	1	3	2	2	4	1	2.1		
Percentage of Patients Restrained (Mechanical)	0.6%	0.7%	0.7%	0.3%	0.6%	1.0%	0.3%	1.0%	0.6%	0.6%	1.3%	0.3%	0.7%		5.8%
Total Restraint Hours (h:mm)	4:00	9:30	4:16	15:00	21:25	6:00	2:00	3:06	5:38	14:56	2:46	0:50	7:27	89:27	
Restraint Hours Rate	0.021	0.048	0.022	0.077	0.108	0.030	0.010	0.016	0.028	0.072	0.015	0.004	0.038		0.71
Number of Seclusion Events	10	20	22	14	21	17	12	19	14	15	20	15	16.6	199	
Number of Unique Patients Secluded	6	8	8	5	12	12	9	11	9	10	12	9	9.3		
Percentage of Patients Secluded	1.9%	2.6%	2.7%	1.6%	3.8%	3.8%	2.8%	3.5%	2.9%	3.1%	3.8%	2.8%	3.0%		2.4%
Total Seclusion Hours (h:mm)	11:47	24:49	22:32	14:14	16:51	9:52	8:01	16:36	22:48	9:24	16:21	20:15	16:07	193:30	
Seclusion Hours Rate	0.063	0.127	0.118	0.073	0.085	0.049	0.040	0.086	0.112	0.045	0.088	0.101	0.082		0.44

* National Public Rate, NASMHPD Research Institute, National Research Institute (NRI), Data as of June 2013, Published in November 2013.

** The Hospital's restraint data herein includes only mechanical restraint events while NPR data includes physical holds. The Hospital is currently in the process of implementing a new process to report and track a physical hold as a restraint event.

Performance Related Information for Staff & Managers

6. Major Unusual Incidents by Incident Location/Unit

Data Source: UI DB

Updated as of 04/10/15

Category		Apr-14	May-14	Jun-14	Jul-14	Aug-14	Sep-14	Oct-14	Nov-14	Dec-14	Jan-15	Feb-15	Mar-15	Monthly Average	Total (12mths)	Percent
Total Unusual Incidents		213	193	174	199	249	190	217	208	238	240	198	193	209	2512	100%
Incident Location	1A	6	14	4	7	15	4	11	12	9	5	5	11	9	103	4%
	1B	7	9	9	21	19	10	18	14	12	12	10	12	13	153	6%
	1C	17	7	11	6	12	18	32	14	24	28	25	7	17	201	8%
	1D	11	27	22	19	29	20	7	18	40	37	15	23	22	268	11%
	1E	22	17	13	12	22	21	25	15	26	15	12	12	18	212	8%
	1F	27	19	15	37	32	28	25	23	34	43	28	28	28	339	13%
	1G	22	27	24	12	28	20	13	7	7	11	12	7	16	190	8%
	2A	5	3	3	6	10	7	4	12	7	16	3	6	7	82	3%
	2B	6	4	0	2	4	8	5	15	2	2	3	3	5	54	2%
	2C	19	19	19	22	20	9	17	10	16	14	24	10	17	199	8%
	2D	34	16	13	20	18	17	18	26	22	19	19	33	21	255	10%
	TLC	21	17	24	14	20	15	26	26	23	21	31	27	22	265	11%
	Other	16	14	17	21	20	13	16	16	16	17	11	14	16	191	8%
	Physical Assault		64	55	36	38	50	44	67	42	59	72	58	58	54	643
Incident Location	1A	1	5	0	2	2	1	0	0	0	1	2	4	2	18	3%
	1B	1	3	1	3	0	2	4	2	3	0	1	0	2	20	3%
	1C	5	2	3	1	0	3	9	0	8	6	6	2	4	45	7%
	1D	4	8	8	5	14	11	4	3	5	10	4	7	7	83	13%
	1E	8	7	3	5	1	4	12	4	3	5	4	8	5	64	10%
	1F	7	4	2	5	3	5	8	9	19	15	13	10	8	100	16%
	1G	8	9	4	3	8	9	4	0	2	4	5	1	5	57	9%
	2A	0	0	0	0	0	0	1	1	2	5	1	0	1	10	2%
	2B	0	0	0	2	0	0	0	1	0	0	0	0	0	3	0%
	2C	7	5	7	4	3	2	4	6	5	7	10	4	5	64	10%
	2D	15	8	3	1	11	4	11	8	6	7	4	12	8	90	14%
	TLC - Intensive	5	3	2	2	3	0	7	5	4	8	6	9	5	54	8%
	TLC - Transitional	1	0	0	2	4	3	0	3	1	3	1	1	2	19	3%
	Other	2	1	3	3	1	0	3	0	1	1	1	0	1	16	2%

Performance Related Information for Staff & Managers

6. Major Unusual Incidents by Incident Location/Unit

Data Source: UI DB

Updated as of 04/10/15

Category		Apr-14	May-14	Jun-14	Jul-14	Aug-14	Sep-14	Oct-14	Nov-14	Dec-14	Jan-15	Feb-15	Mar-15	Monthly Average	Total (12mths)	Percent
Aggressive Behavior		62	57	61	71	102	66	65	71	78	73	63	46	68	815	127%
Incident Location	1A	0	0	1	1	5	1	2	1	3	0	0	0	1	14	2%
	1B	0	0	0	3	7	4	5	2	1	0	0	1	2	23	4%
	1C	3	0	1	3	6	7	10	3	7	10	12	2	5	64	10%
	1D	2	10	5	4	12	7	1	7	23	21	8	7	9	107	17%
	1E	9	4	3	2	15	11	8	7	13	7	5	1	7	85	13%
	1F	13	9	10	20	18	10	14	11	12	15	10	7	12	149	23%
	1G	10	11	17	5	14	8	0	2	0	0	2	1	6	70	11%
	2A	3	2	2	4	7	3	1	2	1	6	2	2	3	35	5%
	2B	2	1	0	0	1	4	2	11	0	0	0	0	2	21	3%
	2C	3	8	10	12	6	3	5	2	4	1	5	3	5	62	10%
	2D	9	5	2	8	1	2	5	11	8	5	7	11	6	74	12%
	TLC - Intensive	5	6	7	4	3	3	3	4	3	4	8	6	5	56	9%
	TLC - Transitional	3	0	2	3	4	1	4	5	1	3	2	2	3	30	5%
	Other	0	1	1	2	3	2	5	3	2	1	2	3	2	25	4%
	Psych Emergency		34	48	48	45	86	56	67	58	72	89	72	47	60	722
Incident Location	1A	0	0	1	1	1	0	1	0	3	1	1	0	1	9	1%
	1B	0	0	0	2	3	1	7	2	1	0	0	0	1	16	2%
	1C	0	0	2	1	3	2	12	0	4	8	7	4	4	43	7%
	1D	2	10	6	3	18	9	3	9	14	16	11	9	9	110	17%
	1E	8	5	3	1	16	16	14	10	15	11	7	5	9	111	17%
	1F	5	7	4	19	13	10	15	16	19	22	15	15	13	160	25%
	1G	9	16	17	5	16	12	3	0	0	1	2	1	7	82	13%
	2A	2	0	0	0	0	0	0	0	1	4	1	0	1	8	1%
	2B	0	0	0	0	1	0	0	5	0	0	0	0	1	6	1%
	2C	4	4	10	7	7	0	4	0	1	4	7	1	4	49	8%
	2D	3	2	0	3	5	3	5	11	13	14	9	3	6	71	11%
	TLC - Intensive	0	4	4	2	2	0	2	2	1	5	10	6	3	38	6%
	TLC - Transitional	1	0	0	0	1	2	0	2	0	3	0	1	1	10	2%
	Other	0	0	1	1	0	1	1	1	1	0	0	2	2	9	1%

Performance Related Information for Staff & Managers

6. Major Unusual Incidents by Incident Location/Unit

Data Source: UI DB

Updated as of 04/10/15

Category		Apr-14	May-14	Jun-14	Jul-14	Aug-14	Sep-14	Oct-14	Nov-14	Dec-14	Jan-15	Feb-15	Mar-15	Monthly Average	Total (12mths)	Percent	
Fall		24	22	20	25	24	25	30	31	35	27	33	27	27	323	100%	
Incident Location	1A	1	3	0	1	4	2	4	9	3	3	2	5	3	37	11%	
	1B	2	1	1	4	6	4	4	5	4	3	6	3	4	43	13%	
	1C	2	4	2	0	1	0	5	2	8	2	0	3	2	29	9%	
	1D	1	5	0	5	2	3	2	2	1	1	0	2	2	24	7%	
	1E	2	0	2	0	1	1	2	2	1	0	2	0	1	13	4%	
	1F	1	0	1	3	1	2	1	2	2	7	4	3	2	27	8%	
	1G	1	2	0	2	2	1	2	1	1	2	4	1	2	19	6%	
	2A	0	0	0	0	0	1	0	0	0	2	0	0	1	0	4	1%
	2B	4	0	0	0	1	2	2	1	0	0	1	1	1	12	4%	
	2C	1	2	1	3	1	0	1	0	5	3	5	0	2	22	7%	
	2D	7	1	4	4	1	5	2	1	1	1	3	3	3	33	10%	
	TLC - Intensive	1	0	1	0	0	1	1	1	1	2	1	1	1	10	3%	
	TLC - Transitional	1	1	2	1	2	1	1	3	3	0	1	0	1	16	5%	
	Other	0	3	6	2	2	2	3	2	3	3	4	4	3	34	11%	
	Physical Injury		43	34	24	26	40	37	36	39	37	41	32	33	35	422	100%
Incident Location	1A	3	3	2	2	2	1	0	1	0	2	2	2	2	20	5%	
	1B	1	3	1	4	2	1	2	3	1	0	1	3	2	22	5%	
	1C	0	2	2	0	2	1	6	0	3	5	4	3	2	28	7%	
	1D	1	6	2	3	6	8	3	3	7	4	1	7	4	51	12%	
	1E	6	3	3	5	4	2	7	4	1	0	2	1	3	38	9%	
	1F	3	1	1	1	4	12	5	8	8	5	8	7	5	63	15%	
	1G	5	9	2	2	6	0	3	1	2	3	1	0	3	34	8%	
	2A	0	0	0	0	0	1	0	2	2	0	1	0	1	6	1%	
	2B	1	1	0	1	0	1	0	0	0	0	0	0	0	4	1%	
	2C	7	2	2	3	4	2	2	2	4	6	6	1	3	41	10%	
	2D	8	1	1	2	1	4	2	7	5	5	1	1	3	38	9%	
	TLC - Intensive	2	1	2	1	2	0	4	3	1	7	1	5	2	29	7%	
	TLC - Transitional	0	0	2	0	2	2	0	3	2	1	2	0	1	14	3%	
	Other	6	2	4	2	5	2	2	2	2	1	3	2	3	34	8%	

* Not every incident is a major incident. This counts only those incidents that were classified to be major based on the policy.

Performance Related Information for Staff & Managers

5. Demographic Information of Individuals in Care

Data Source: Avatar

Updated as of 04/10/15

Category	Sub-group	Apr-14	May-14	Jun-14	Jul-14	Aug-14	Sep-14	Oct-14	Nov-14	Dec-14	Jan-15	Feb-15	Mar-15	Monthly Average	Percent*
Total Active (on Roll) at End of Month*		270	268	271	272	276	278	276	274	283	284	281	278	276	
Gender	Female	82	84	81	82	88	92	92	87	93	90	89	87	87	31.6%
	Male	188	184	190	190	188	186	184	187	190	194	192	191	189	68.4%
Age	Median Age (Years)	56 yrs	57 yrs	57 yrs	55 yrs	56 yrs	55 yrs	56 yrs	55 yrs	55 yrs	55 yrs	56 yrs	56 yrs	56 yrs	
	<30 years old	18	15	17	21	25	29	24	30	28	30	37	38	26	9.4%
	>=30 and <40 years old	30	29	34	36	34	34	34	28	34	34	31	29	32	11.7%
	>=40 and <50 years old	37	37	39	40	39	34	32	31	36	35	32	32	35	12.8%
	>=50 and <60 years old	82	80	78	78	80	84	81	84	81	79	71	69	79	28.6%
	>=60 years old	103	107	103	97	98	97	105	101	104	106	110	110	103	37.5%
Legal Status of Individuals on Roll at End of Month	Emergency	31	36	33	28	25	27	22	21	29	27	27	38	29	10.4%
	Inpatient Commitment	30	31	33	36	39	34	35	35	35	36	36	33	34	12.5%
	Outpatient Commitment	19	18	22	28	23	23	22	27	27	27	28	17	23	8.5%
	Voluntary	38	41	36	36	40	37	35	32	32	37	34	38	36	13.2%
	Non-Protesting	0	0	0	0	0	0	0	0	0	1	1	0	0	0.1%
	Civil Sub-total	118	126	124	128	127	121	114	115	123	128	126	126	123	44.6%
	DC Exam	35	30	30	28	30	31	40	35	43	40	41	38	35	12.7%
	Mentally Incompetent	21	17	21	27	28	36	31	36	28	25	23	25	27	9.6%
	Forensic Pre-trial Sub-total	56	47	51	55	58	67	71	71	71	65	64	63	62	22.3%
	NGBRI - DC	79	79	80	74	75	74	76	74	75	76	76	74	76	27.5%
	NGBRI - US	12	12	12	11	11	11	10	10	10	10	10	10	11	3.9%
	NGBRI - VI	1	1	1	1	1	1	1	1	1	1	1	1	1	0.4%
	Dual Commitment	2	1	1	1	2	2	2	1	1	1	1	1	1	0.5%
Sexual Psychopath (Miller Act)	2	2	2	2	2	2	2	2	2	3	3	3	2	0.8%	
Forensic Post-trial Sub-total	96	95	96	89	91	90	91	88	89	91	91	89	91	33.1%	
Length of Stay	Median LOS (Days)	570 d	557 d	522 d	506 d	424 d	394 d	399 d	412 d	362 d	381 d	402 d	403 d	444 d	
	Average LOS (Days)	2800 d	2772 d	2756 d	2669 d	2545 d	2516 d	2532 d	2549 d	2488 d	2500 d	2490 d	2483 d	2592 d	
	<30 Days	51	34	30	35	40	35	41	35	38	40	37	35	38	13.6%
	>=30 ~ <365 Days	67	85	92	92	92	100	93	100	104	99	100	101	94	34.0%
	>= 1 Year & < 2 Years	26	24	24	22	25	27	25	23	25	27	24	24	25	8.9%
	>= 2 Years & < 5 Years	32	33	32	32	29	27	28	29	29	30	32	32	30	11.0%
	>= 5 Years & < 20 Years	52	51	51	50	50	49	48	46	46	46	47	45	48	17.5%
>= 20 Years	42	41	42	41	40	40	41	41	41	42	41	41	41	14.9%	

* Counts the total number of individuals who are on the hospital roll at end of each month. This number serves as denominator to calculate percentage of each group.