

**Government of the District of Columbia
Department of Behavioral Health (DBH)**

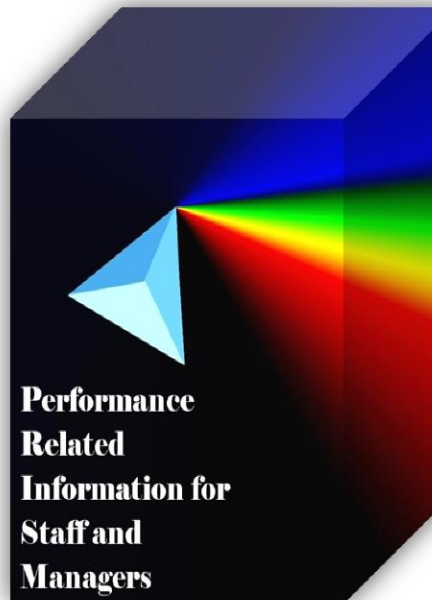


Performance Related Information for Staff and Managers

PRISM

MARCH 2014

Table of Contents



1.	Admissions to SEH	1
2.	Discharges from SEH.....	1
3.	Admissions vs. Discharges by Legal Status for the Past 12 Months	1
4.	Average Daily Census	2
5.	Transfers	2
6.	30-Day Readmission Rate	2
7.	Unusual Incidents.....	3
8.	Patient-Involved Unusual Incidents.....	3
9.	Admissions vs. Patient UI Rate	4
10.	Unusual Incidents by Severity	4
11.	Selected Types of Incidents	4
12.	Physical Assaults by Severity	5
13.	Patient Injuries	5
14.	Staff Injuries.....	5
15.	Percent of Patients Restrained or Secluded.....	6
16.	Restraint Hours Rate & Seclusion Hours Rate	6
17.	Eloperments	6
18.	Reported Medication Variance Events	7
19.	Reported Adverse Drug Reactions	7
20.	Percent of Missing Documentation on Med-Administration.....	8
21.	Number of STAT Events and Individuals Involved	8
22.	Demographics and Length of Stay	9
	<i>Appendix 1) Table – Census, Admissions & Discharges</i>	
	<i>Appendix 2) Table – Key Performance Indicators</i>	
	<i>Appendix 3) Table – Unusual Incident & Medication</i>	
	<i>Appendix 4) Table – Restraint & Seclusion</i>	
	<i>Appendix 5) Table – Demographic Information of Individuals in Care</i>	
	<i>Appendix 6) Table – Unusual Incidents by Unit</i>	

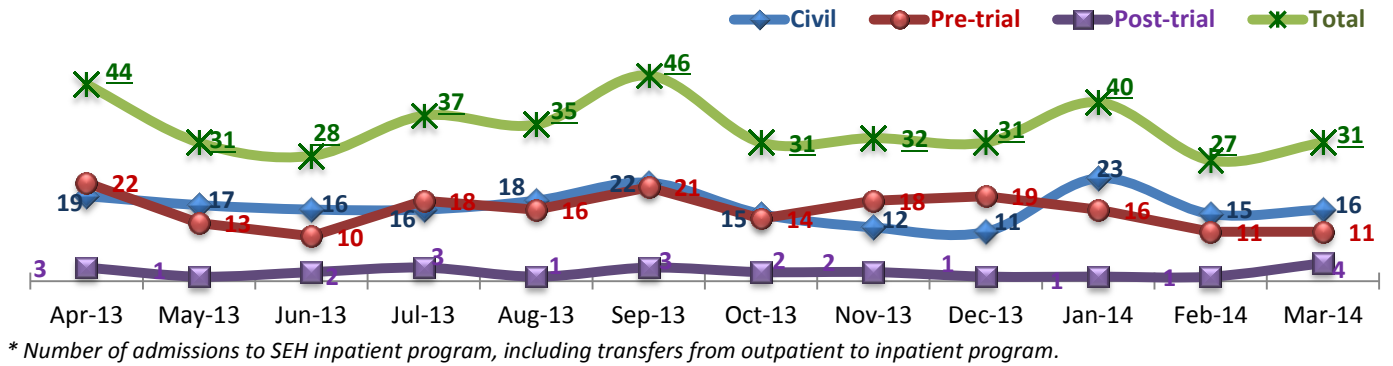
04/20/2014

Office of Statistics and Reporting (OSR)

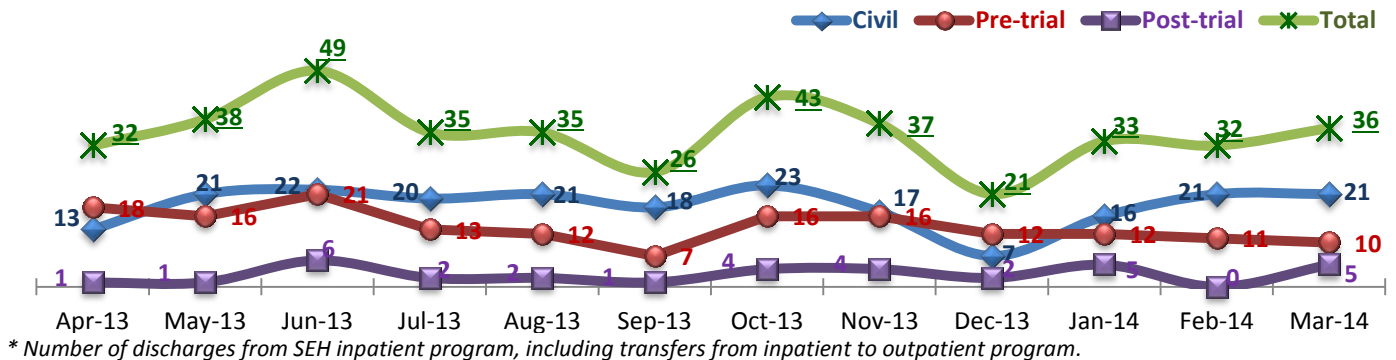
Key Trends: Admission, Discharge, Transfer, Census, and Readmissions (1~6)

- In March 2014, admissions and discharges both increased but the number of discharges exceeded the number of admissions, lowering the March average daily census to 266 from 272 in February.
- For the first time since we started tracking unauthorized leaves (ULs), no UL was reported in March 2014.
- There has been no individual who was re-admitted within 30-days since December 2013. The Hospital's 30-day readmission rate for the first five months in FY14 is 1.8%, which is far below the NPR (6.9%)¹.
- The number of emergency medical transfers increased in March: the frequency of medical transfers is overall higher than FY12.

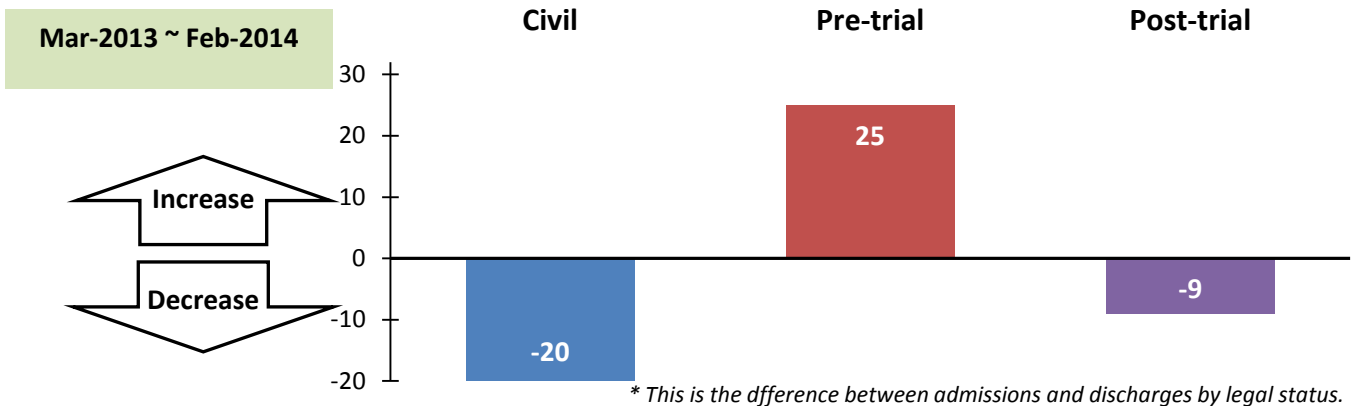
1. Admissions to SEH



2. Discharges from SEH

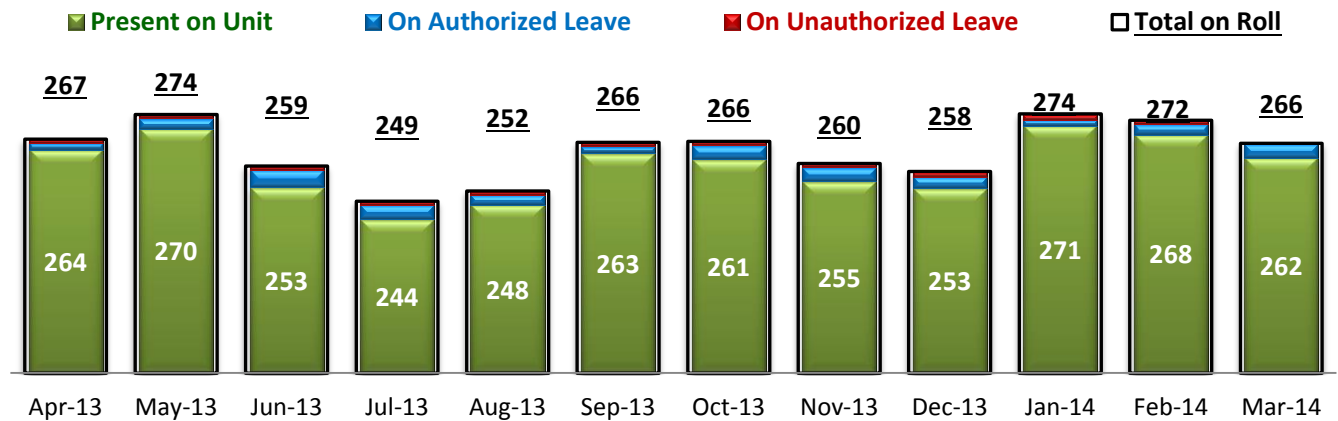


3. Admissions vs. Discharges by Legal Status for the Past 12 Months



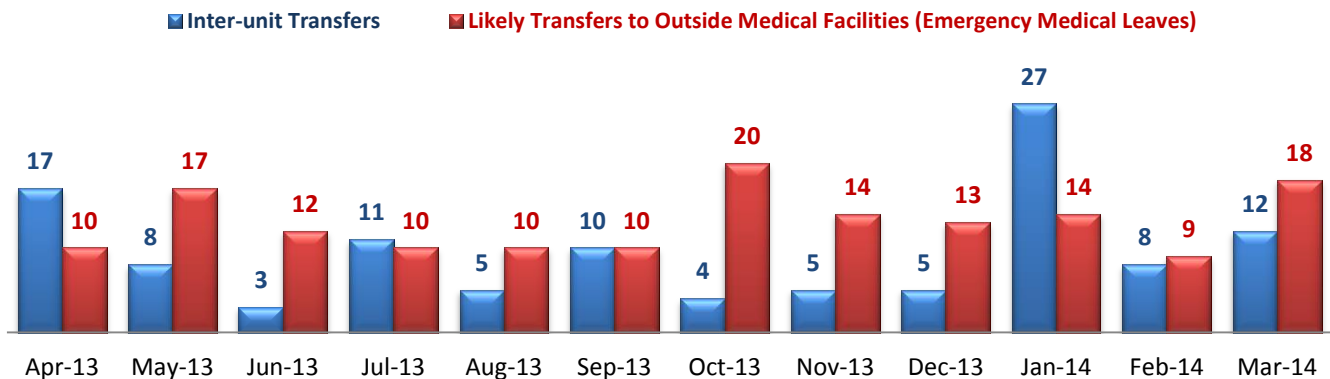
¹ NPR: National Public Rate as of June 2013 was published in November 2013 by National Association of State Mental Health Program Directors Research Institute (NRI), based on data collected from a number of state psychiatric hospitals nationwide.

4. Average Daily Census



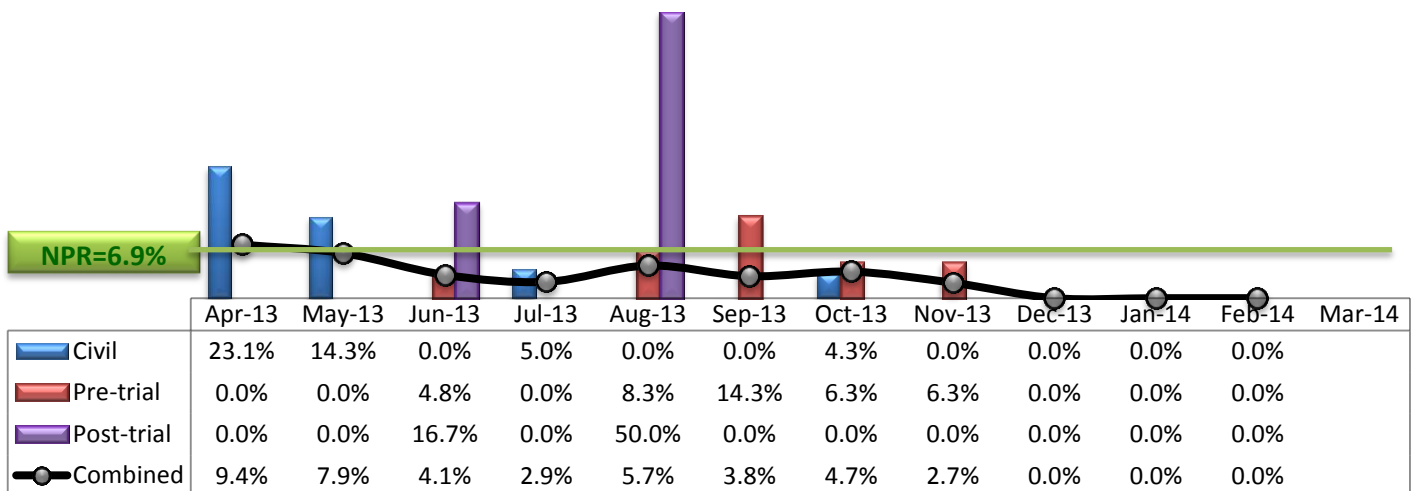
* Data above is the daily average number of individuals counted at 11:59 PM every day during each month.

5. Transfers



* Number of inter-unit transfers that occurred during month and number of emergency medical leaves that were initiated during month.

6. 30-Day Readmission Rate



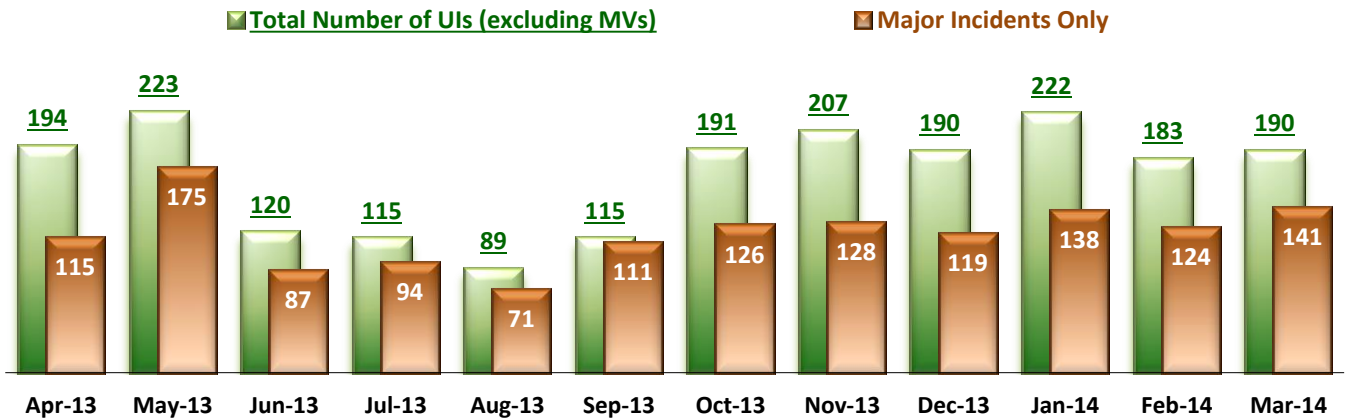
* Percent of discharges that returned to SEH within 30 days of discharges. It does not include those who may have been re-hospitalized at another psychiatric facility. This measure requires 30-day observation following discharge.

** The post-trial denominators (discharges) per month range only between one and six, making the monthly re-admission rate high when there is any. For example, in August 2013, there were two post trial discharges, of which one (50%) was readmitted within 30 days.

Key Trends: Unusual Incidents (7~17)

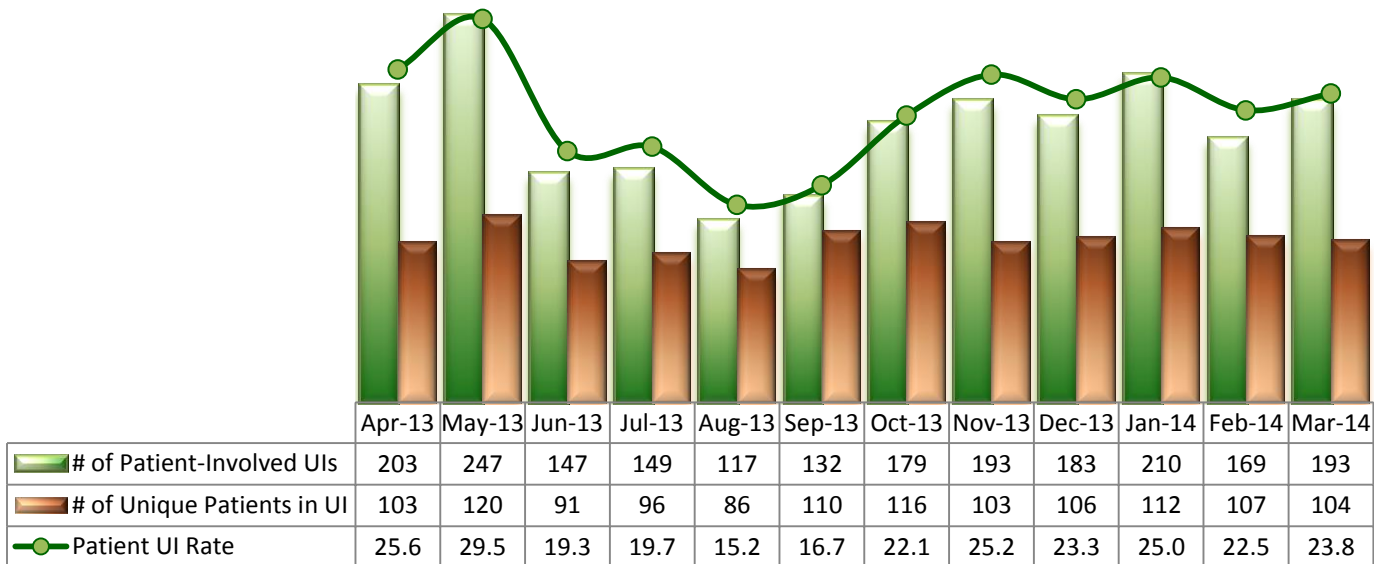
- The number of all unusual incidents (UIs) and patient UI rate both increased in March. Overall, the number of UIs during the first half of FY14 is higher than the last quarter of FY13 but lower than the April and May 2013 levels. The patient UI rate over the past 6 months has been relatively steady, ranging between 22 and 25 per 1000 patient days.
- The frequency of incidents involving psychiatric emergency and aggressive behaviors noticeably increased in March while the number of physical assaults remained similar to the February level. It should be noted that physical assaults at medium or severe level increased. The number of aggressive behaviors has been consistently higher than the number of physical assaults since August 2013.
- Both patient and staff injuries increased.

7. Unusual Incidents



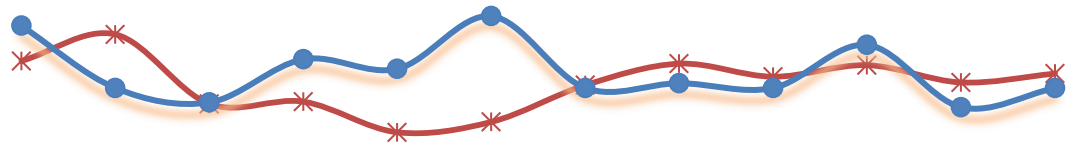
* Numbers above represent all types of the unusual incidents (UIs) that were reported to the Risk Manager by PRISM publication date, including those that did not involve any patients.

8. Patient-Involved Unusual Incidents



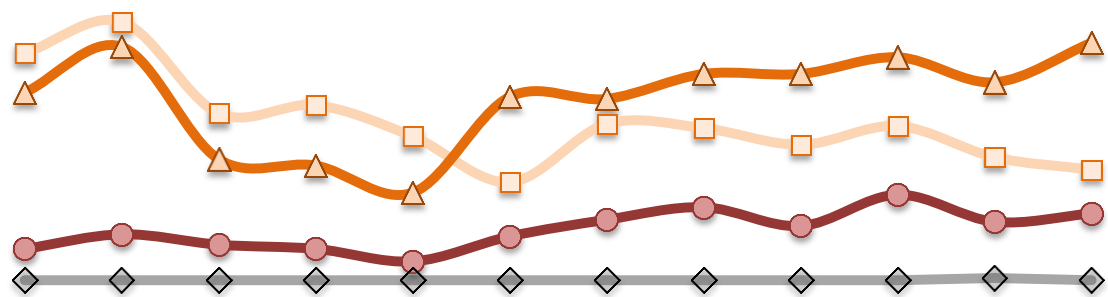
* The patient UI rate is the number of patient-involved unusual incidents reported for every 1000 inpatient days.

9. Admissions vs. Patient UI Rate



	Apr-13	May-13	Jun-13	Jul-13	Aug-13	Sep-13	Oct-13	Nov-13	Dec-13	Jan-14	Feb-14	Mar-14
✱ Patient UI Rate	25.6	29.5	19.3	19.7	15.2	16.7	22.1	25.2	23.3	25.0	22.5	23.8
● Admission	44	31	28	37	35	46	31	32	31	40	27	31

10. Unusual Incidents by Severity



	Apr-13	May-13	Jun-13	Jul-13	Aug-13	Sep-13	Oct-13	Nov-13	Dec-13	Jan-14	Feb-14	Mar-14
□ 1) Low	109	124	80	84	69	47	75	73	65	74	59	53
△ 2) Medium	90	112	58	55	42	88	87	99	99	107	95	114
● 3) High	15	22	17	15	9	21	29	35	26	41	28	32
◇ 4) Catstrp	0	0	0	0	0	0	0	0	0	0	1	0
Total UI	214	258	155	154	120	156	191	207	190	222	183	190

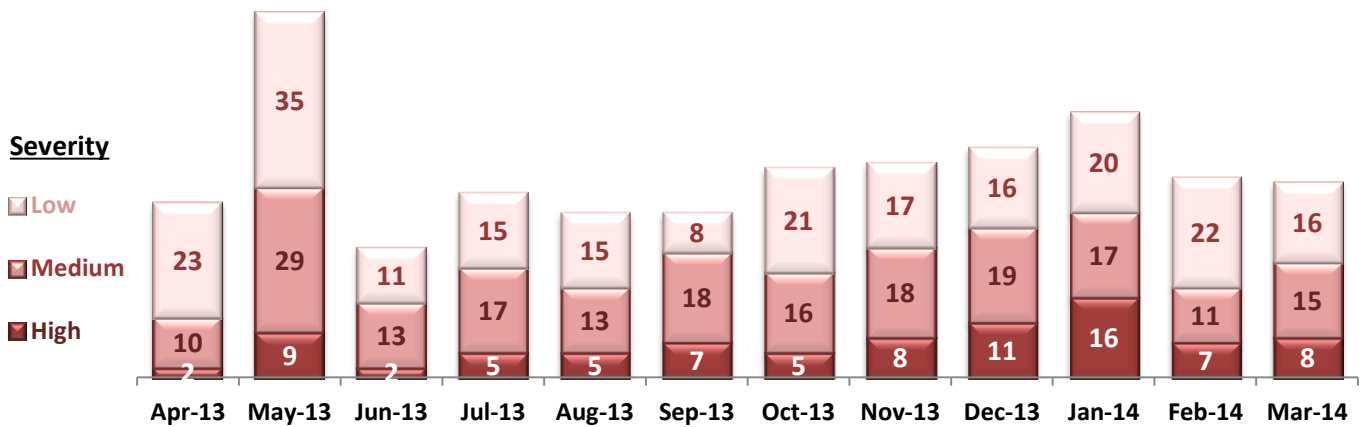
11. Selected Types of Incidents



	Apr-13	May-13	Jun-13	Jul-13	Aug-13	Sep-13	Oct-13	Nov-13	Dec-13	Jan-14	Feb-14	Mar-14
◇ Aggressive Behavior	66	54	44	30	35	34	45	45	48	67	48	65
● Physical Assault	35	73	26	37	33	33	42	43	46	53	40	39
✱ Pysch Emerg.	16	31	14	9	9	19	23	30	31	51	34	52
■ Fall	16	34	17	15	11	27	19	17	16	18	24	26
▲ Injury	21	47	19	24	16	33	23	41	37	46	28	34

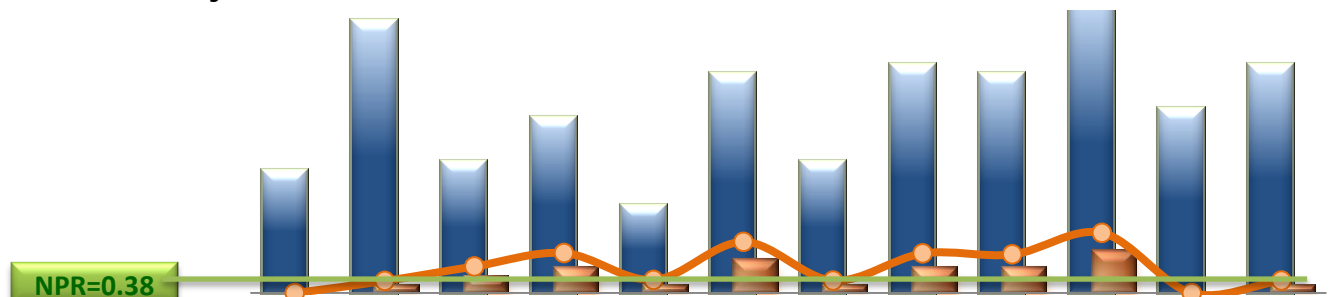
* These are incident types that are frequently reported. Some incidents may be counted in multiple categories. For example, a physical assault incident that accompanied psychiatric emergency and injury is counted under psychiatric emergency and injury as well as under physical assault. Injury is broadly defined to include any type of injuries regardless of the cause or severity level.

12. Physical Assaults by Severity



* Any physical assault that accompanies a code 13 or results in extensive injury needing off-unit treatment or transfer to ER is considered to be high severity, any physical assault that causes a minor injury that can be treated on unit is considered to be medium severity, and physical assault events that result in no injury are considered to be low severity.

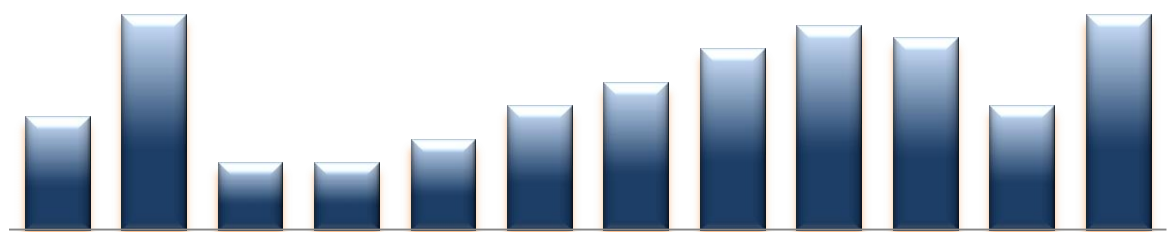
13. Patient Injuries



	Apr-13	May-13	Jun-13	Jul-13	Aug-13	Sep-13	Oct-13	Nov-13	Dec-13	Jan-14	Feb-14	Mar-14
Total Pts Injured	14	31	15	20	10	25	15	26	25	34	21	26
Major Pt Injuries*	0	1	2	3	1	4	1	3	3	5	0	1
Patient Injury Rate	0.00	0.12	0.26	0.40	0.13	0.51	0.12	0.39	0.38	0.60	0.00	0.12

* Injury is broadly defined to include any type of injuries regardless of the cause or severity level. The total number of patients injured represents all of the reported injuries including minor injuries treated with first aid alone. However, the patient injury rate considers only the number of patient injuries that required beyond first-aid level treatment based on the NRI definition and the patient injury rate is the number of 'major' patient injuries per every 1000 inpatient days

14. Staff Injuries



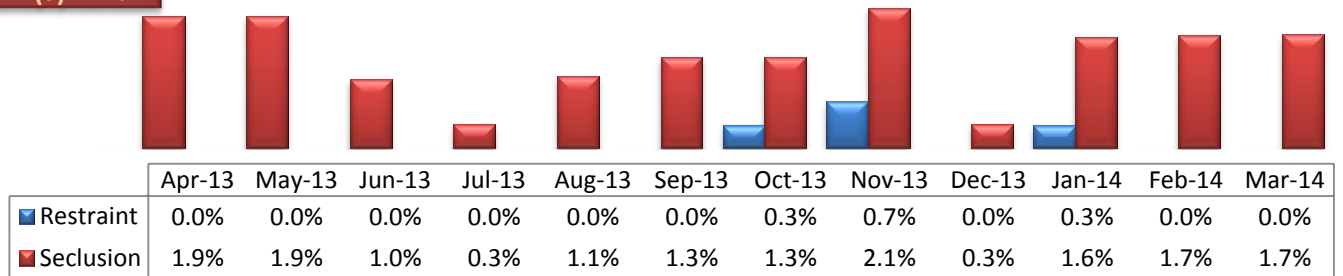
	Apr-13	May-13	Jun-13	Jul-13	Aug-13	Sep-13	Oct-13	Nov-13	Dec-13	Jan-14	Feb-14	Mar-14
# of Staff Injured	10	19	6	6	8	11	13	16	18	17	11	19

* Injury is broadly defined to include any type of injuries regardless of the cause or severity level. The total number of staff injured represents all of the reported staff injuries including minor injuries treated with first aid alone.

15. Percent of Patients Restrained or Secluded

NPR(R)=5.8%

NPR(S)=2.4%

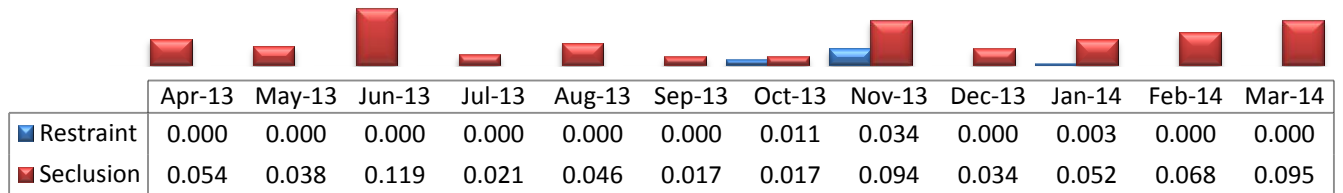


* Percent of unique patients who were restrained at least once and percent of unique patients who were secluded at least once. The denominator includes all individuals who were served in care >=1 day during month.

16. Restraint Hours Rate & Seclusion Hours Rate

NPR(R)=0.71

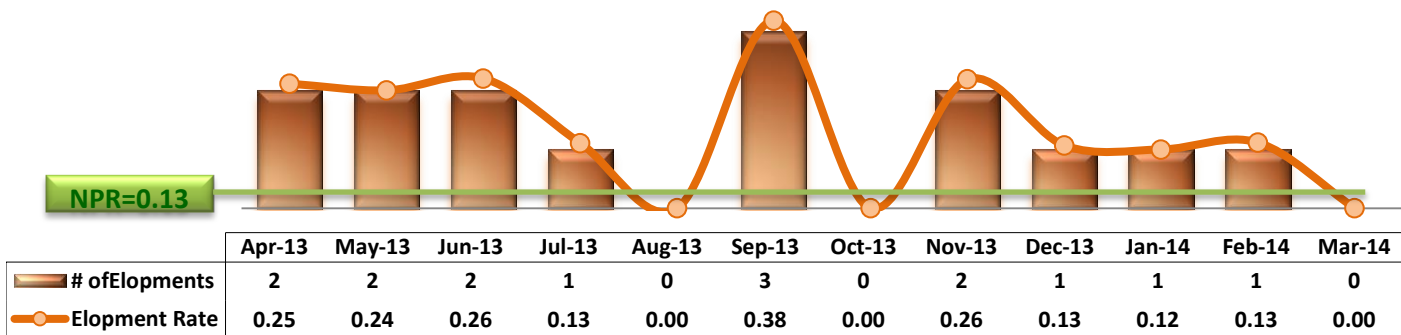
NPR(S)=0.44



* Restraint/Seclusion Hours Rate: Number of hours spent in restraint/seclusion for every 1000 inpatient hours.

17. Elopements

NPR=0.13



* It counts the total number of unauthorized leaves for any duration that were initiated during month and were recorded in Avatar. The elopement rate is the number of those unauthorized leaves that occurred for every 1000 inpatient days.

Key Trends: Medication Documentation, Medication Variance, ADR, and STAT (18~21)

- In March 2014, the number of reported medication variance events decreased but the number of suspected ADR reports increased.
- The rate of missing documentation on medication administration significantly declined in March.
- The trend of STAT orders and events often resembles the trend of psychiatric emergencies: as the number of psychiatric emergencies increased, the frequency of STAT events also noticeably increased. The number of unique individuals with >=3 STAT events during March (8) is noticeably high.

18. Reported Medication Variance Events



	Apr-13	May-13	Jun-13	Jul-13	Aug-13	Sep-13	Oct-13	Nov-13	Dec-13	Jan-14	Feb-14	Mar-14
# of MV Events	20	35	35	39	31	41	21	23	8	20	37	22
MV Rate	2.53	4.18	4.61	5.15	4.03	5.20	2.59	3.01	1.02	2.38	4.92	2.71

* MV Rate: Number of reported medication variance events that occurred for every 1000 inpatient days.

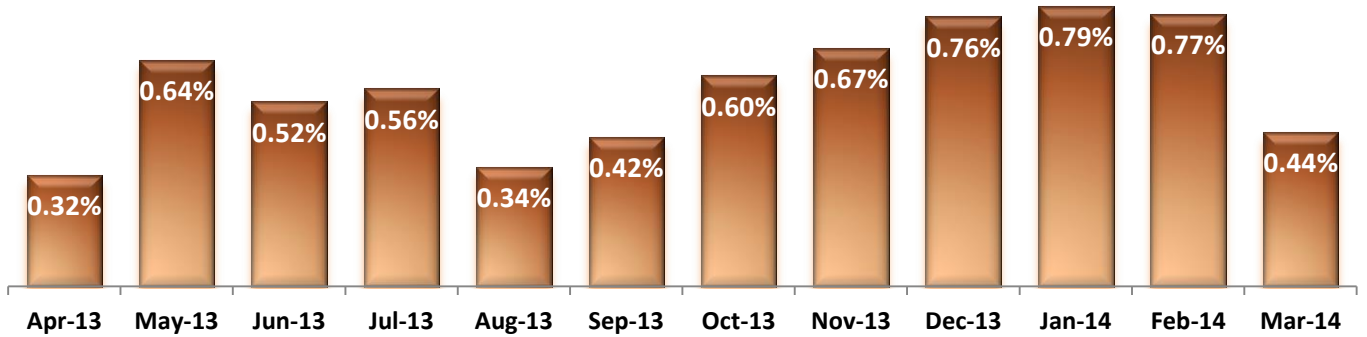
19. Reported Adverse Drug Reactions



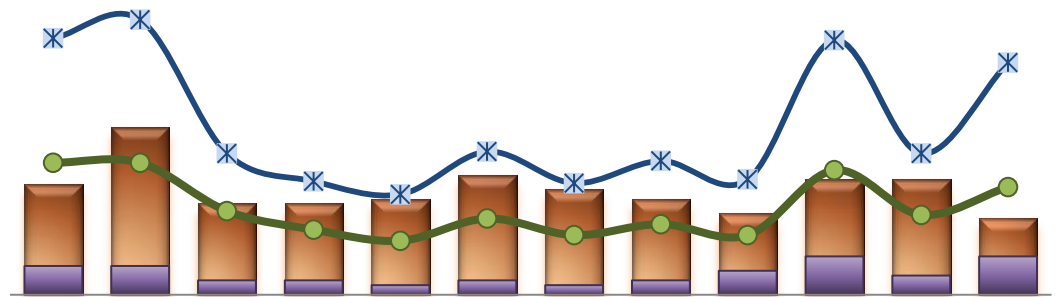
	Apr-13	May-13	Jun-13	Jul-13	Aug-13	Sep-13	Oct-13	Nov-13	Dec-13	Jan-14	Feb-14	Mar-14
# of ADRs	12	4	11	7	5	6	2	1	8	9	4	13
ADR Rate	1.52	0.48	1.45	0.92	0.65	0.76	0.25	0.13	1.02	1.07	0.53	1.60

* ADR Rate: Number of reported adverse drug reaction events that occurred for every 1000 inpatient days.

20. Percent of Missing Documentation on Med-Administration



21. Number of STAT Events and Individuals Involved



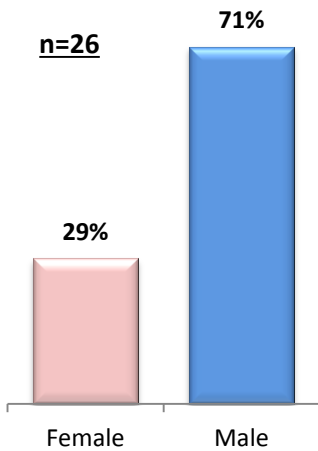
	Apr-13	May-13	Jun-13	Jul-13	Aug-13	Sep-13	Oct-13	Nov-13	Dec-13	Jan-14	Feb-14	Mar-14
IICs w/ >=1 STAT	23	35	19	19	20	25	22	20	17	24	24	16
IICs w/ >=3 STAT Events	6	6	3	3	2	3	2	3	5	8	4	8
Total STAT Events	71	71	45	35	29	41	32	38	32	67	43	58
Total STAT Orders	138	148	76	61	54	77	60	72	62	137	76	125

Key Trends: Demographics, Legal Status, and Length of Stay (21)

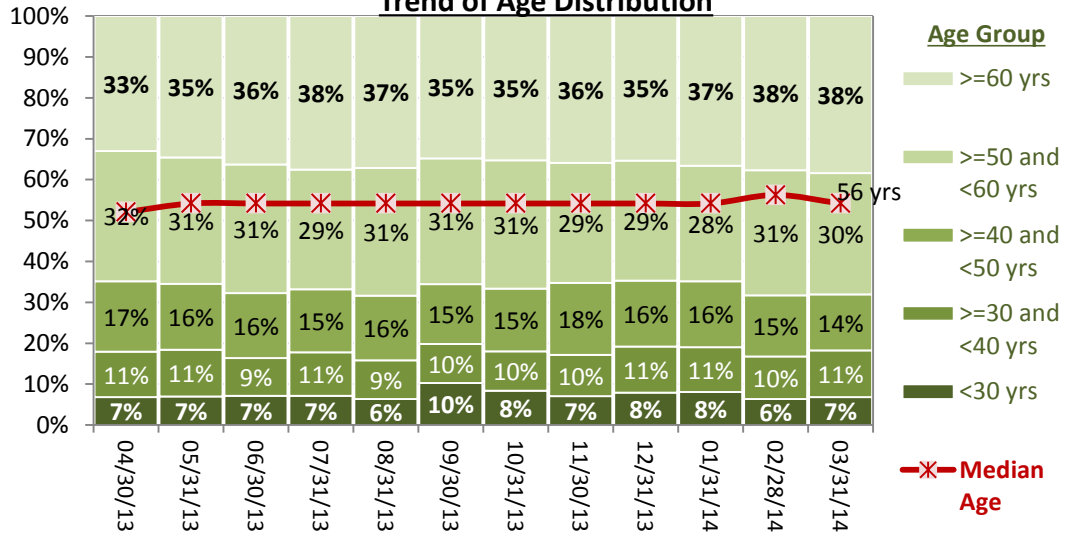
- The gender distribution slightly changes month by month but overall about 3 out of 10 individuals are female.
- The proportion of the elderly population in our care continued to grow throughout the year. The percentage of those 60 years or older gradually increased throughout the year: 33% in April 2013 to 38% in March 2014.
- The proportion of individuals with a civil legal status noticeably increased for the past couple of months, reaching 52% as of March 31, 2014. This is attributed to an increase in the number of individuals remaining in care with a civil commitment legal status. Particularly, the number of individuals with an outpatient commitment legal status who were remaining in the Hospital significantly increased: from 22 as of February 28, 2014 to 32 as of March 31, 2014.
- After a significant decline in the median length of stay (LOS) during the first four months of this fiscal year, it slightly increased over the past few months.

22. Demographics and Length of Stay

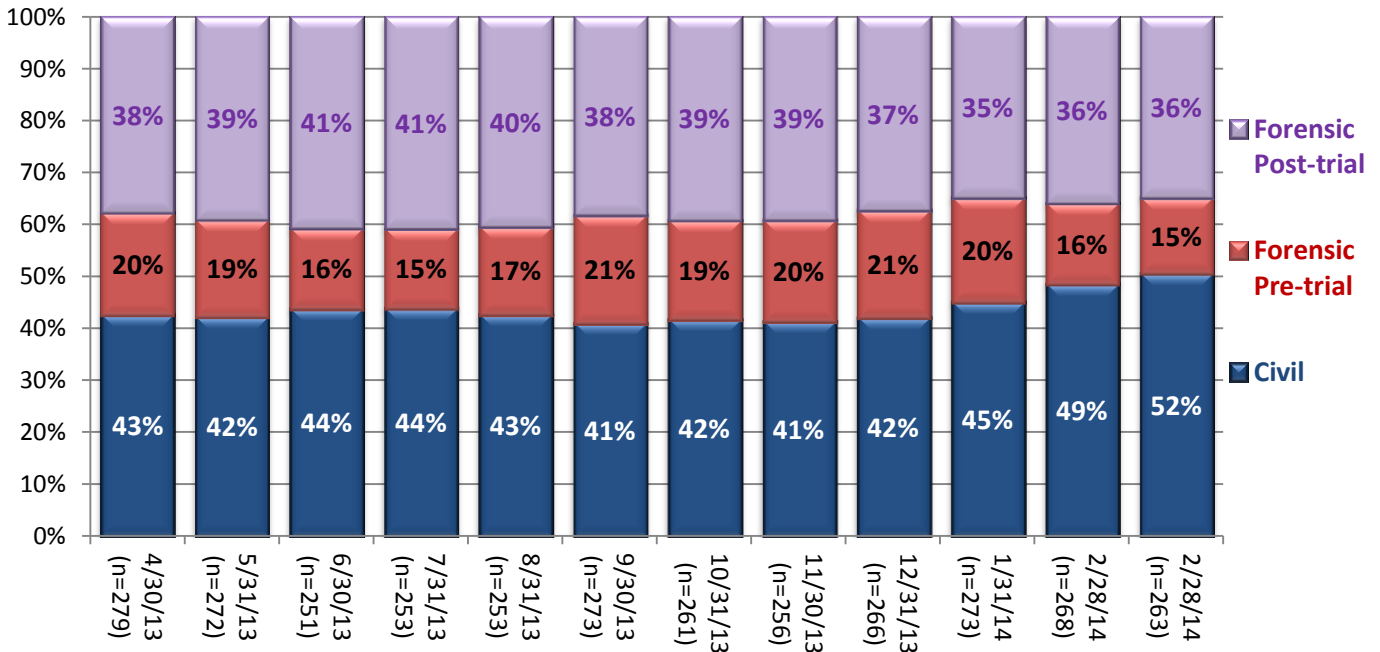
Gender Distribution (3/31/14)

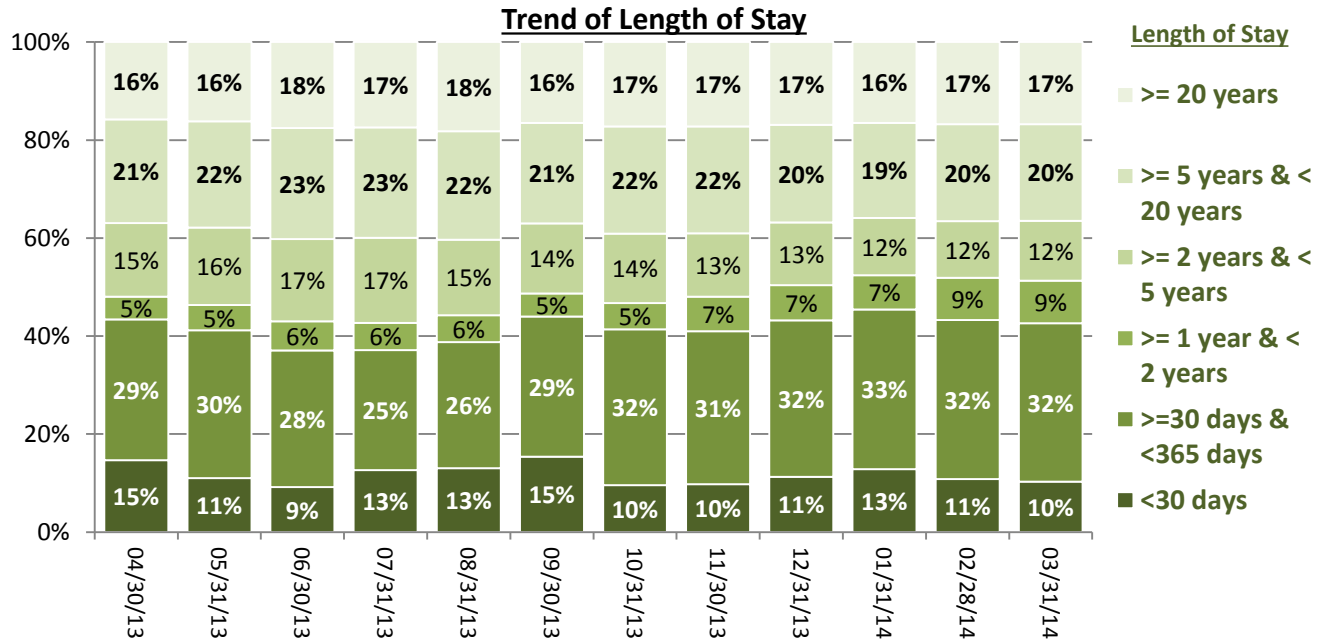
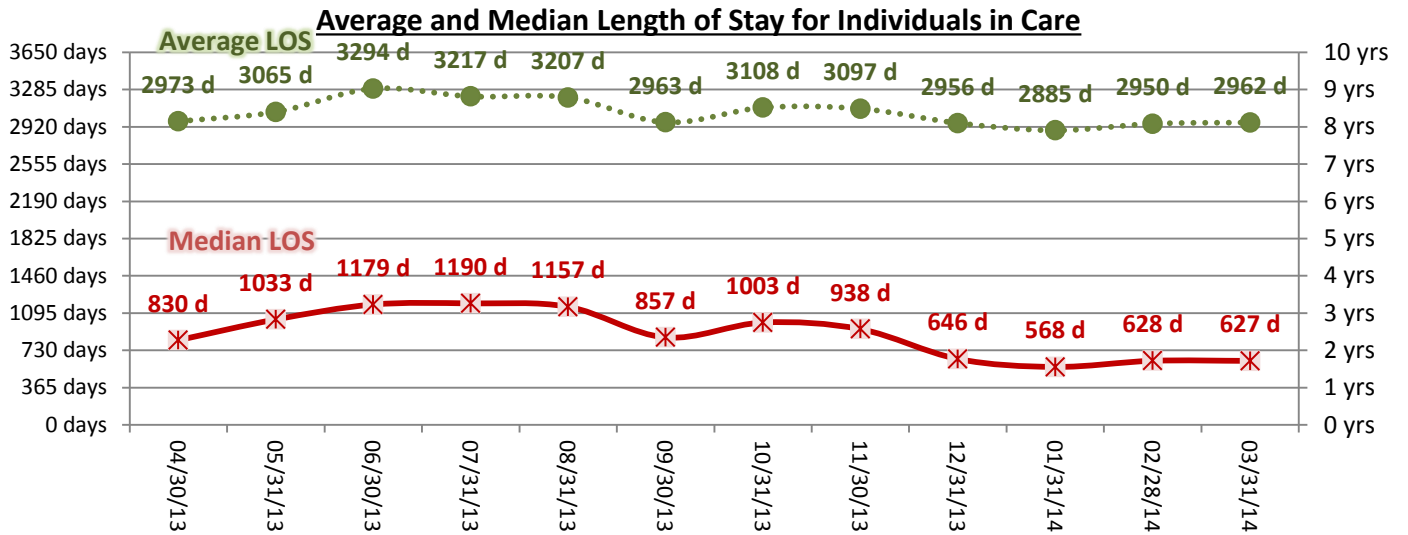


Trend of Age Distribution



Trend of Legal Status Distribution





Performance Related Information for Staff & Managers

1. Census, Admissions, Discharges & Transfers

Data Source: Avatar

Updated as of 04/17/14

Category	Apr-13	May-13	Jun-13	Jul-13	Aug-13	Sep-13	Oct-13	Nov-13	Dec-13	Jan-14	Feb-14	Mar-14	Monthly Average	Total (12mths)	Figure	
Admissions	Civil	19	17	16	16	18	22	15	12	11	23	15	16	17	200	Figure 1
	Pre-trial	22	13	10	18	16	21	14	18	19	16	11	11	16	189	
	Post-trial	3	1	2	3	1	3	2	2	1	1	1	4	2	24	
	Total	44	31	28	37	35	46	31	32	31	40	27	31	34	413	
Discharges	Civil	13	21	22	20	21	18	23	17	7	16	21	21	18	220	Figure 2
	Pre-trial	18	16	21	13	12	7	16	16	12	12	11	10	14	164	
	Post-trial	1	1	6	2	2	1	4	4	2	5	0	5	3	33	
	Total	32	38	49	35	35	26	43	37	21	33	32	36	35	417	
Net Increase During Month	Civil	6	-4	-6	-4	-3	4	-8	-5	4	7	-6	-5		-20	Figure 3
	Pre-trial	4	-3	-11	5	4	14	-2	2	7	4	0	1		25	
	Post-trial	2	0	-4	1	-1	2	-2	-2	-1	-4	1	-1		-9	
	Total	12	-7	-21	2	0	20	-12	-5	10	7	-5	-5		-4	
All Individuals on Roll at End of Month	279	272	251	253	253	273	261	256	266	273	268	263	264			
a. Present on Unit	273	267	246	247	251	268	256	250	262	269	263	256	259			
b. On AL	4	4	3	5	1	3	4	5	2	3	5	7	4			
c. On UL	2	1	2	1	1	2	1	1	2	1	0	0	1			
All Individuals on Roll: Daily Average during Month*	267	274	259	249	252	266	266	260	258	274	272	266	264			
a. Present on Unit	264	270	253	244	248	263	261	255	253	271	268	262	259		Figure 4	
b. On AL	2	3	5	4	3	2	4	4	3	2	3	4	4			
c. On UL	1	1	1	1	1	1	1	1	1	2	1	0	0			
Patient Days**	7918	8370	7597	7569	7693	7891	8101	7649	7844	8394	7514	8115	7888	94655		
Inter-Unit Transfers during Month	17	8	3	11	5	10	4	5	5	27	8	12	10	115	Figure 5	
Medical Leaves Initiated during Month	Emergency	10	17	12	10	10	10	20	14	13	14	9	18	13	157	
	Non-Emer	32	23	24	35	24	22	39	27	34	25	32	25	29	342	
	Total	42	40	36	45	34	32	59	41	47	39	41	43	42	499	
Non-Medical Leaves Initiated during Month	89	80	92	88	96	97	146	121	138	142	141	175	117	1405		
UL Initiated during Month	2	2	2	1	0	3	0	2	1	1	1	0	1	15		
Total Unique Patients Served during Month	310	310	299	286	285	299	299	291	287	306	300	299	298			
30 Day Readmission ***	Civil	3	3	0	1	0	0	1	0	0	0	0		1	8	
	Pre-trial	0	0	1	0	1	1	1	0	0	0	0		0	5	
	Post-trial	0	0	1	0	1	0	0	0	0	0	0		0	2	
	Total	3	3	2	1	2	1	2	1	0	0	0		1	15	

* This is the average number of individuals served on a given day for the respective month. Due to rounding from average calculation, numbers from its subcategories a, b, & c may not add up to the total number on this row.

** It counts the number of patients who are present on the unit and excludes those on authorized or unauthorized leave at 11:59pm on a given day.

*** Number of patients returning within 30 days of discharges that occurred during month.

Performance Related Information for Staff & Managers

2. Key Performance Indicators

Data Source: UI DB, MV DB, ADR DB, Restraint/Seclusion Log, and Avatar

Updated as of 04/17/14

Category	Apr-13	May-13	Jun-13	Jul-13	Aug-13	Sep-13	Oct-13	Nov-13	Dec-13	Jan-14	Feb-14	Mar-14	Monthly Average	NPR* (Jun-13)	Figure
30 Day Readmit (Discharge Cohort)**	Civil	23.1%	14.3%	0.0%	5.0%	0.0%	0.0%	4.3%	0.0%	0.0%	0.0%	0.0%	4.0%		Figure 6
	Pre-trial	0.0%	0.0%	4.8%	0.0%	8.3%	14.3%	6.3%	6.3%	0.0%	0.0%	0.0%	3.3%		
	Post-trial	0.0%	0.0%	16.7%	0.0%	50.0%	0.0%	0.0%	0.0%	0.0%	0.0%	N/A	6.6%		
	Combined	9.4%	7.9%	4.1%	2.9%	5.7%	3.8%	4.7%	2.7%	0.0%	0.0%	0.0%	3.9%	6.9%	
Number of Unusual Incidents*	194	223	120	115	89	115	191	207	190	222	183	190	187		Figure 7
Patient Unusual Incident Rate	25.6	29.5	19.3	19.7	15.2	16.7	22.1	25.2	23.3	25.0	22.5	23.8	22.4		Figure 8
UI by Severity	Catastrophe	0	0	0	0	0	0	0	0	0	1	0	0		Figure 10
	High	15	22	17	15	9	21	29	35	26	41	28	24		
	Medium	90	112	58	55	42	88	87	99	99	107	95	87		
	Low	109	124	80	84	69	47	75	73	65	74	59	53	76	
Physical Assault Incident Rate	4.4	8.7	3.4	4.9	4.3	4.2	5.2	5.6	5.9	6.3	5.3	4.8	5.3		
Selected Types of Incidents	Physical Assault	35	73	26	37	33	33	42	43	46	53	40	39	42	Figure 11
	Aggressive Behav.	66	54	44	30	35	34	45	45	48	67	48	65	48	
	Psych Emergency	16	31	14	9	9	19	23	30	31	51	34	52	27	
	Fall	16	34	17	15	11	27	19	17	16	18	24	26	20	
	Injury	21	47	19	24	16	33	23	41	37	46	28	34	31	
Physical Assaults by Severity	High	2	9	2	5	5	7	5	8	11	16	7	8	7	Figure 12
	Medium	10	29	13	17	13	18	16	18	19	17	11	15	16	
	Low	23	35	11	15	15	8	21	17	16	20	22	16	18	
Patient Injury Rate***	0.00	0.12	0.26	0.40	0.13	0.51	0.12	0.39	0.38	0.60	0.00	0.12	0.25	0.38	Figure 13
Patients with Major Injuries***	0	1	2	3	1	4	1	3	3	5	0	1	2		
Total Patients Injured***	14	31	15	20	10	25	15	26	25	34	21	26	22		
Total Staff Injured***	10	19	6	6	8	11	13	16	18	17	11	19	13		Figure 14
Elopement Rate	0.25	0.24	0.26	0.13	0.00	0.38	0.00	0.26	0.13	0.12	0.13	0.00	0.17	0.13	Figure 17
Medication Variance Rate	2.53	4.18	4.61	5.15	4.03	5.20	2.59	3.01	1.02	2.38	4.92	2.71	3.51		Figure 18
Adverse Drug Reaction Rate	1.52	0.48	1.45	0.92	0.65	0.76	0.25	0.13	1.02	1.07	0.53	1.60	0.87		Figure 19
Missing Med-Admin Documentation	0.32%	0.64%	0.52%	0.56%	0.34%	0.42%	0.60%	0.67%	0.76%	0.79%	0.77%	0.44%	0.57%		Figure 20
Percent of Patients Restrained	0.0%	0.0%	0.0%	0.0%	0.0%	0.0%	0.3%	0.7%	0.0%	0.3%	0.0%	0.0%	0.1%	5.8%	Figure 15
Percent of Patients Secluded	1.9%	1.9%	1.0%	0.3%	1.1%	1.3%	1.3%	2.1%	0.3%	1.6%	1.7%	1.7%	1.4%	2.4%	
Restraint Hours Rate	0.000	0.000	0.000	0.000	0.000	0.000	0.011	0.034	0.000	0.003	0.000	0.000	0.004	0.71	Figure 16
Seclusion Hours Rate	0.054	0.038	0.119	0.021	0.046	0.017	0.017	0.094	0.034	0.052	0.068	0.095	0.054	0.44	

* National Public Rate, NASMHPD Research Institute, National Research Institute (NRI), Data as of June 2013, Published in November 2013.

** Percentage of patients returning within 30 days of discharges that occurred during month

*** Refer to the next page [UI & Medication]

Performance Related Information for Staff & Managers

3. Unusual Incident & Medication

Data Source: UI DB, MV DB, ADR DB, and Avatar

Updated as of 04/17/14

Category	Apr-13	May-13	Jun-13	Jul-13	Aug-13	Sep-13	Oct-13	Nov-13	Dec-13	Jan-14	Feb-14	Mar-14	Monthly Average	Total (12mths)	NPR* (Jun-13)	
Unusual Incidents (excluding MV)**	Total UIs	214	258	155	154	120	156	191	207	190	222	183	190	187	2240	
	Major UIs Only	115	175	87	94	71	111	126	128	119	138	124	141	119	1429	
	Pt Involved UI Only	203	247	147	149	117	132	179	193	183	210	169	193	177	2122	
	Patient UI Rate	25.6	29.5	19.3	19.7	15.2	16.7	22.1	25.2	23.3	25.0	22.5	23.8	22.4		
Unique Pts Involved in UI	103	120	91	96	86	110	116	103	106	112	107	104	105	1254		
Selected Types of Incidents	Physical Assault	35	73	26	37	33	33	42	43	46	53	40	39	42	500	
	Aggressive Behavior	66	54	44	30	35	34	45	45	48	67	48	65	48	581	
	Psych Emergency	16	31	14	9	9	19	23	30	31	51	34	52	27	319	
	Fall	16	34	17	15	11	27	19	17	16	18	24	26	20	240	
	Injury	21	47	19	24	16	33	23	41	37	46	28	34	31	369	
Physical Assault Rate	4.4	8.7	3.4	4.9	4.3	4.2	5.2	5.6	5.9	6.3	5.3	4.8	5.3			
UI by Severity	Catastrophe	0	0	0	0	0	0	0	0	0	1	0	0	0	1	
	High	15	22	17	15	9	21	29	35	26	41	28	32	24	290	
	Medium	90	112	58	55	42	88	87	99	99	107	95	114	87	1046	
	Low	109	124	80	84	69	47	75	73	65	74	59	53	76	912	
Physical Assaults by Severity	High	2	9	2	5	5	7	5	8	11	16	7	8	7	85	
	Medium	10	29	13	17	13	18	16	18	19	17	11	15	16	196	
	Low	23	35	11	15	15	8	21	17	16	20	22	16	18	219	
Total Patients Injured***	14	31	15	20	10	25	15	26	25	34	21	26	22	262		
Patients with Major Injuries***	0	1	2	3	1	4	1	3	3	5	0	1	2	24		
Patient Injury Rate***	0.00	0.12	0.26	0.40	0.13	0.51	0.12	0.39	0.38	0.60	0.00	0.12	0.25		0.38	
Total Staff Injured**	10	19	6	6	8	11	13	16	18	17	11	19	13			
Total UL Incident Reports	2	2	1	4	1	3	1	2	2	0	1	0	2			
Total ULs Documented in Avatar	2	2	2	1	0	3	0	2	1	1	1	0	1	16		
Elopement Rate	0.25	0.24	0.26	0.13	0.00	0.38	0.00	0.26	0.13	0.12	0.13	0.00	0.17		0.13	
Med Variance (MV) Reports**		20	35	35	39	31	41	21	23	8	20	37	22	28	332	
	MV Rate	2.53	4.18	4.61	5.15	4.03	5.20	2.59	3.01	1.02	2.38	4.92	2.71	3.51		
Adverse Drug Reactions Reports		12	4	11	7	5	6	2	1	8	9	4	13	7	82	
	ADR Rate	1.52	0.48	1.45	0.92	0.65	0.76	0.25	0.13	1.02	1.07	0.53	1.60	0.87		
Total Med Administrations Scheduled	103057	107694	102644	102303	102848	101049	95559	101422	102249	108474	98616	107326		1233241		
Total Missing Documentations	326	690	537	572	348	427	570	684	780	860	759	469		7022		
Percent of Missing Documentation	0.32%	0.64%	0.52%	0.56%	0.34%	0.42%	0.60%	0.67%	0.76%	0.79%	0.77%	0.44%		0.57%		
Total STAT Orders	138	148	76	61	54	77	60	72	62	137	76	125	91		Figure 21	
Total STAT Events****	71	71	45	35	29	41	32	38	32	67	43	58	47			
Total Individuals Involved >=1 STAT	23	35	19	19	20	25	22	20	17	24	24	16	22			
Total Patients with >=3 STAT Events	6	6	3	3	2	3	2	3	5	8	4	8	4			

* National Public Rate, NASMHPD Research Institute, National Research Institute (NRI), Data as of June 2013, Published in November 2013.

** Numbers may change if any additional UI report is made after the data run date from UI database (around the 15th of the following month); According to the revised UI policy as of November 4, 2013, a medication variance (MV) incident is no longer considered to be an unusual incident. While the official number of UIs until October 2013 remains as including MVs, for PRISM publication, UI data for the past 12 months herein has been reanalyzed in order to show the UI trend in consistent logic.

*** Injury is broadly defined to include any type of injuries regardless of the cause or severity level. The total number of patients injured represents all of the reported injuries including minor injuries treated with first aid alone. However, the patient injury rate considers only the number of patient injuries that required beyond first-aid level treatment based on the NRI definition and the patient injury rate is the number of 'major' patient injuries per every 1000 inpatient days

**** One STAT event may involve more than one STAT order for the same patient. Any orders placed within 20 minute timeframe are considered to belong to one STAT event.

Performance Related Information for Staff & Managers

4. Restraint & Seclusion

Data Source: Restraint/Seclusion Log and UI DB (for # of total events and patients) and Avatar (for patient days/hours)

Updated as of 04/17/14

Category	Apr-13	May-13	Jun-13	Jul-13	Aug-13	Sep-13	Oct-13	Nov-13	Dec-13	Jan-14	Feb-14	Mar-14	Monthly Average	Total (12mths)	NPR* (Jun-13)
Number of Restraint Events	0	0	0	0	0	0	2	2	0	1	0	0	0.4	5	
Number of Unique Patients Restrained	0	0	0	0	0	0	1	2	0	1	0	0	0.3		
Percentage of Patients Restrained	0.0%	0.0%	0.0%	0.0%	0.0%	0.0%	0.3%	0.7%	0.0%	0.3%	0.0%	0.0%	0.1%		5.8%
Total Restraint Hours (h:mm)	0:00	0:00	0:00	0:00	0:00	0:00	2:08	6:15	0:00	0:35	0:00	0:00	0:44	8:58	
Restraint Hours Rate	0.000	0.000	0.000	0.000	0.000	0.000	0.011	0.034	0.000	0.003	0.000	0.000	0.004		0.71
Number of Seclusion Events	10	12	5	4	5	4	4	11	6	6	13	15	7.9	95	
Number of Unique Patients Secluded	6	6	3	1	3	4	4	6	1	5	5	5	4.1		
Percentage of Patients Secluded	1.9%	1.9%	1.0%	0.3%	1.1%	1.3%	1.3%	2.1%	0.3%	1.6%	1.7%	1.7%	1.4%		2.4%
Total Seclusion Hours (h:mm)	10:18	7:44	21:45	3:50	8:30	3:10	3:20	17:11	6:20	10:34	12:15	18:27	10:17	123:24	
Seclusion Hours Rate	0.054	0.038	0.119	0.021	0.046	0.017	0.017	0.094	0.034	0.052	0.068	0.095	0.054		0.44

* National Public Rate, NASMHPD Research Institute, National Research Institute (NRI), Data as of June 2013, Published in November 2013.

Performance Related Information for Staff & Managers

5. Demographic Information of Individuals in Care

Data Source: Avatar

Updated as of 04/17/14

Category	Sub-group	Apr-13	May-13	Jun-13	Jul-13	Aug-13	Sep-13	Oct-13	Nov-13	Dec-13	Jan-14	Feb-14	Mar-14	Monthly Average	Percent*
Total Active (on Roll) at End of Month*		279	272	251	253	253	273	261	256	266	273	268	263	264	
Gender	Female	80	78	67	73	70	70	68	69	72	79	75	76	73	27.7%
	Male	199	194	184	180	183	203	193	187	194	194	193	187	191	72.3%
Age	Median Age (Years)	55 yrs	56 yrs	56 yrs	56 yrs	56 yrs	56 yrs	56 yrs	56 yrs	56 yrs	56 yrs	57 yrs	56 yrs	56 yrs	
	<30 years old	19	19	18	18	16	28	22	18	21	22	17	18	20	7.4%
	>=30 and <40 years old	31	31	23	27	24	26	25	26	30	30	28	30	28	10.4%
	>=40 and <50 years old	48	44	40	39	40	40	40	45	43	44	40	36	42	15.8%
	>=50 and <60 years old	89	84	79	74	79	84	82	75	78	77	82	78	80	30.3%
	>=60 years old	92	94	91	95	94	95	92	92	94	100	101	101	95	36.0%
Legal Status of Individuals on Roll at End of Month	Emergency	29	31	27	19	18	27	18	19	26	34	33	35	26	10.0%
	Inpatient Commitment	21	21	21	23	20	22	24	23	23	26	28	28	23	8.8%
	Outpatient Commitment	24	18	18	19	24	21	25	23	22	22	22	32	23	8.5%
	Voluntary	45	45	44	50	46	42	42	41	41	41	47	43	44	16.6%
	Civil Sub-total	119	115	110	111	108	112	109	106	112	123	130	138	116	44.0%
	DC Exam	54	50	38	38	41	55	48	49	54	54	41	38	47	17.7%
	Mentally Incompetent	1	1	1	1	2	2	2	1	1	1	1	2	1	0.5%
	Forensic Pre-trial Sub-total	55	51	39	39	43	57	50	50	55	55	42	40	48	18.2%
	NGBRI - DC	90	91	87	89	88	89	86	83	82	77	78	77	85	32.1%
	NGBRI - US	10	10	10	9	9	10	11	12	12	13	13	13	11	4.2%
NGBRI - VI	1	1	1	1	1	1	1	1	1	1	1	1	1	0.4%	
Dual Commitment	2	2	2	2	2	2	2	2	2	2	2	2	2	0.8%	
Sexual Psychopath (Miller Act)	2	2	2	2	2	2	2	2	2	2	2	2	2	0.8%	
Forensic Post-trial Sub-total	105	106	102	103	102	104	102	100	99	95	96	95	101	38.2%	
Length of Stay	Median LOS (Days)	830 d	1033 d	1179 d	1190 d	1157 d	857 d	1003 d	938 d	646 d	568 d	628 d	627 d	888 d	
	Average LOS (Days)	2973 d	3065 d	3294 d	3217 d	3207 d	2963 d	3108 d	3097 d	2956 d	2885 d	2950 d	2962 d	3056 d	
	<30 Days	41	30	23	32	33	42	25	25	30	35	29	27	31	11.7%
	>=30 ~ <365 Days	80	82	70	62	65	78	83	80	85	89	87	85	79	29.9%
	>= 1 Year & < 2 Years	13	14	15	14	14	13	14	18	19	19	23	23	17	6.3%
	>= 2 Years & < 5 Years	42	43	42	44	39	39	37	33	34	32	31	32	37	14.1%
	>= 5 Years & < 20 Years	59	59	57	57	56	56	57	56	53	53	53	52	56	21.1%
>= 20 Years	44	44	44	44	46	45	45	44	45	45	45	44	45	16.9%	

* Counts the total number of individuals who are on the hospital roll at end of each month. This number serves as denominator to calculate percentage of each group.

Performance Related Information for Staff & Managers

6. Major Unusual Incidents by Incident Location/Unit

Data Source: UI DB

Updated as of 04/17/14

Category		Apr-13	May-13	Jun-13	Jul-13	Aug-13	Sep-13	Oct-13	Nov-13	Dec-13	Jan-14	Feb-14	Mar-14	Monthly Average	Total (12mths)	Percent
Total Unusual Incidents		214	258	155	154	120	156	191	207	190	222	183	190	187	2240	
Physical Assault		35	73	26	37	33	33	42	43	46	53	40	39	42	500	100%
Incident Location	1A	2	3	0	2	6	1	3	1	2	2	1	1	2	24	5%
	1B	2	7	0	0	1	0	2	1	0	0	4	0	1	17	3%
	1C	5	4	0	5	3	4	4	4	3	3	1	0	3	36	7%
	1D	7	7	2	6	4	6	5	4	3	4	7	13	6	68	14%
	1E	4	8	3	4	2	6	2	6	4	12	0	11	5	62	12%
	1F	1	16	1	3	4	6	3	3	8	7	5	1	5	58	12%
	1G	1	2	6	7	1	1	5	8	16	10	8	3	6	68	14%
	2A	0	0	0	0	0	0	0	0	0	0	0	0	0	0	0%
	2B	1	0	0	1	0	0	0	0	0	0	0	0	0	2	0%
	2C	1	4	2	1	3	0	3	3	3	4	5	2	3	31	6%
	2D	6	9	8	2	0	2	8	8	4	6	4	3	5	60	12%
	TLC - Intensive	2	8	3	3	6	4	5	2	2	3	5	3	4	46	9%
	TLC - Transitional	2	4	1	3	2	2	1	3	0	1	0	1	2	20	4%
	Other	1	1	0	0	1	1	1	0	1	1	0	1	1	8	2%
	Psych Emergency		16	31	14	9	9	19	23	30	31	51	34	52	27	319
Incident Location	1A	0	0	0	0	0	0	0	0	0	0	1	0	0	1	0%
	1B	0	0	0	0	0	0	0	0	0	0	3	3	1	6	1%
	1C	1	0	0	0	0	3	1	4	1	0	1	1	1	12	2%
	1D	0	4	2	1	1	3	2	1	0	8	3	7	3	32	6%
	1E	7	10	0	2	0	5	2	9	2	14	1	22	6	74	15%
	1F	4	14	8	1	3	6	3	11	10	17	16	10	9	103	21%
	1G	1	2	3	4	2	1	8	5	16	10	5	3	5	60	12%
	2A	1	0	0	0	0	0	0	0	0	0	0	0	0	1	0%
	2B	1	0	0	0	0	0	1	0	0	0	0	0	0	2	0%
	2C	0	0	0	0	2	1	0	0	0	0	1	4	1	8	2%
	2D	0	0	0	0	0	0	4	0	2	1	2	1	1	10	2%
	TLC - Intensive	0	0	0	0	0	0	2	0	0	1	1	1	0	5	1%
	TLC - Transitional	1	1	1	0	1	0	0	0	0	0	0	0	0	4	1%
	Other	0	0	0	1	0	0	0	0	0	0	0	0	0	1	0%

Performance Related Information for Staff & Managers

6. Major Unusual Incidents by Incident Location/Unit

Data Source: UI DB

Updated as of 04/17/14

Category		Apr-13	May-13	Jun-13	Jul-13	Aug-13	Sep-13	Oct-13	Nov-13	Dec-13	Jan-14	Feb-14	Mar-14	Monthly Average	Total (12mths)	Percent	
Fall		16	34	17	15	11	27	19	17	16	18	24	26	20	240	100%	
Incident Location	1A	1	8	3	2	4	3	2	1	3	2	3	5	3	37	15%	
	1B	2	6	5	4	2	3	4	1	2	1	3	2	3	35	15%	
	1C	1	1	1	3	0	3	2	1	1	4	2	2	2	21	9%	
	1D	3	0	0	0	1	3	2	3	1	1	2	4	2	20	8%	
	1E	1	1	0	1	0	4	1	2	1	3	1	1	1	16	7%	
	1F	0	1	1	0	1	1	0	0	0	1	3	1	1	10	4%	
	1G	2	0	1	0	0	0	0	1	2	0	0	1	1	7	3%	
	2A	0	1	2	0	0	1	2	0	0	0	0	1	0	1	7	3%
	2B	1	1	1	0	0	2	1	2	2	3	0	1	2	1	14	6%
	2C	0	2	0	2	0	1	0	0	0	0	0	1	4	1	10	4%
	2D	0	5	2	0	1	2	1	2	2	0	1	2	2	2	18	8%
	TLC - Intensive	3	0	1	0	0	2	2	2	2	2	0	0	0	1	12	5%
	TLC - Transitional	0	7	0	0	0	1	1	1	1	0	0	1	0	1	11	5%
	Other	2	1	0	3	2	1	1	1	1	0	3	6	2	2	22	9%
Physical Injury		21	47	19	24	16	33	23	41	37	46	28	34	31	369	100%	
Incident Location	1A	1	1	1	4	4	2	1	2	1	0	1	4	2	22	6%	
	1B	2	6	2	1	1	3	0	2	0	1	2	2	2	22	6%	
	1C	1	2	1	3	0	3	1	2	3	3	1	1	2	21	6%	
	1D	4	4	1	5	3	7	4	5	4	11	6	5	5	59	16%	
	1E	3	4	3	0	1	4	2	6	2	7	1	8	3	41	11%	
	1F	1	9	3	2	3	4	1	2	10	10	5	1	4	51	14%	
	1G	2	2	2	2	1	1	5	4	11	3	4	2	3	39	11%	
	2A	0	2	0	0	0	1	1	1	1	0	0	0	0	5	1%	
	2B	1	0	1	0	0	1	1	1	1	1	0	1	2	1	9	2%
	2C	0	3	0	2	1	1	1	3	1	4	1	5	2	22	6%	
	2D	1	8	2	1	0	2	2	4	3	3	3	2	3	31	8%	
	TLC - Intensive	1	2	3	1	2	2	1	4	1	1	1	2	2	21	6%	
	TLC - Transitional	1	2	0	2	0	1	1	2	2	0	0	0	0	1	9	2%
	Other	3	2	0	1	0	1	2	3	3	0	3	2	0	1	17	5%

* Not every incident is a major incident. This counts only those incidents that were classified to be major based on the policy.