

**Government of the District of Columbia
Department of Behavioral Health (DBH)**

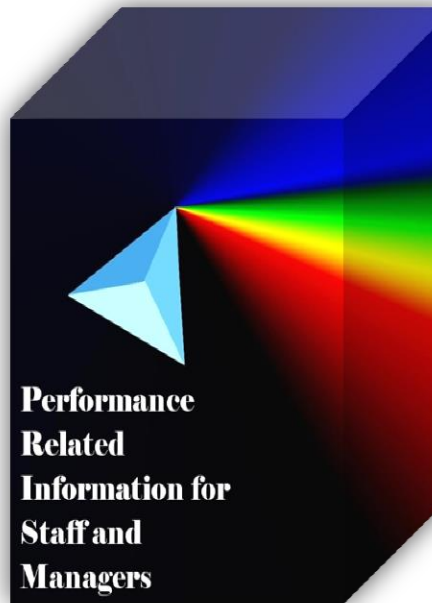


Performance Related Information for Staff and Managers

PRISM

FEBRUARY 2014

Table of Contents



| | | |
|-----|---|---|
| 1. | Admissions to SEH | 1 |
| 2. | Discharges from SEH..... | 1 |
| 3. | Admissions vs. Discharges by Legal Status for the Past 12 Months | 1 |
| 4. | Average Daily Census | 2 |
| 5. | Transfers | 2 |
| 6. | 30-Day Readmission Rate | 2 |
| 7. | Unusual Incidents..... | 3 |
| 8. | Patient-Involved Unusual Incidents..... | 3 |
| 9. | Admissions vs. Patient UI Rate | 4 |
| 10. | Unusual Incidents by Severity | 4 |
| 11. | Selected Types of Incidents | 4 |
| 12. | Physical Assaults by Severity | 5 |
| 13. | Patient Injuries | 5 |
| 14. | Staff Injuries | 5 |
| 15. | Percent of Patients Restrained or Secluded..... | 6 |
| 16. | Restraint Hours Rate & Seclusion Hours Rate | 6 |
| 17. | Eloperments | 6 |
| 18. | Reported Medication Variance Events | 7 |
| 19. | Reported Adverse Drug Reactions | 7 |
| 20. | Percent of Missing Documentation on Med-Administration..... | 8 |
| 21. | Number of STAT Events and Individuals Involved | 8 |
| 22. | Demographics and Length of Stay | 9 |
| | <input type="checkbox"/> Appendix 1) Table – Census, Admissions & Discharges | |
| | <input type="checkbox"/> Appendix 2) Table – Key Performance Indicators | |
| | <input type="checkbox"/> Appendix 3) Table – Unusual Incident & Medication | |
| | <input type="checkbox"/> Appendix 4) Table – Restraint & Seclusion | |
| | <input type="checkbox"/> Appendix 5) Table – Demographic Information of Individuals in Care | |
| | <input type="checkbox"/> Appendix 6) Table – Unusual Incidents by Unit | |

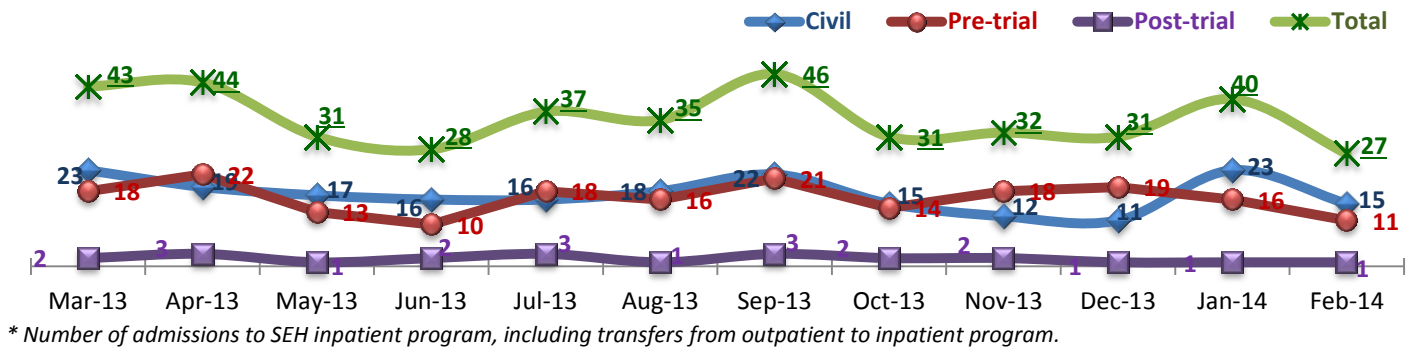
03/14/2014

Office of Statistics and Reporting (OSR)

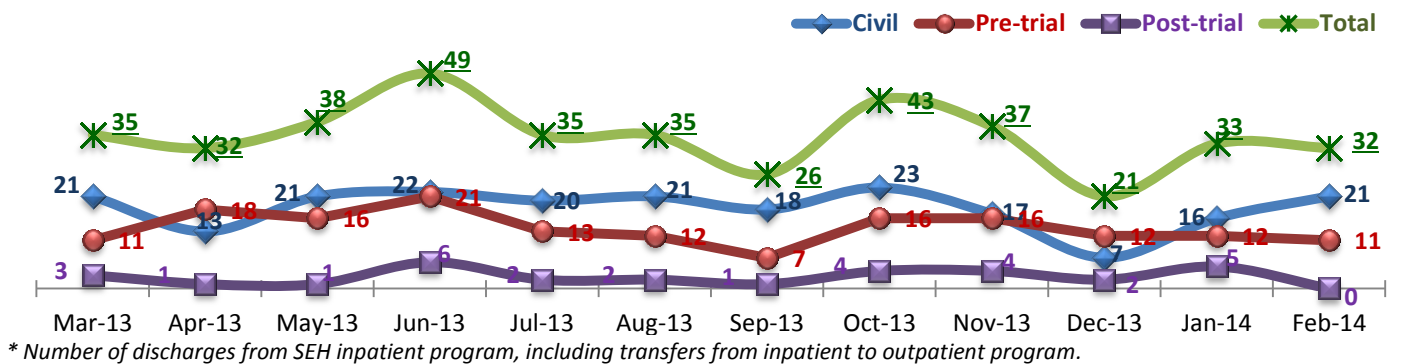
Key Trends: Admission, Discharge, Transfer, Census, and Readmissions (1~6)

- In February 2014, the number of admissions (27) fell to the lowest level of the past 12 month period while discharges remained at a level (32) similar to the previous month (33), exceeding admissions; as a result, the average daily census slightly declined to 272 in February from 274 in January 2014.
- Despite the decline in admissions during February, the overall total number of admissions (425) in the past 12 months exceeded the total number of discharges (416) by 9; there were 31 more admissions than discharges for forensic pre-trial population while there were 13 and 9 more discharges than admissions for civil and forensic post-trial population, respectively.
- There has been no individual who was re-admitted within 30-days since December. The Hospital's 30-day readmission rate for the first four months in FY14 is 2.2%, which is far below the NPR (7.0%)¹.

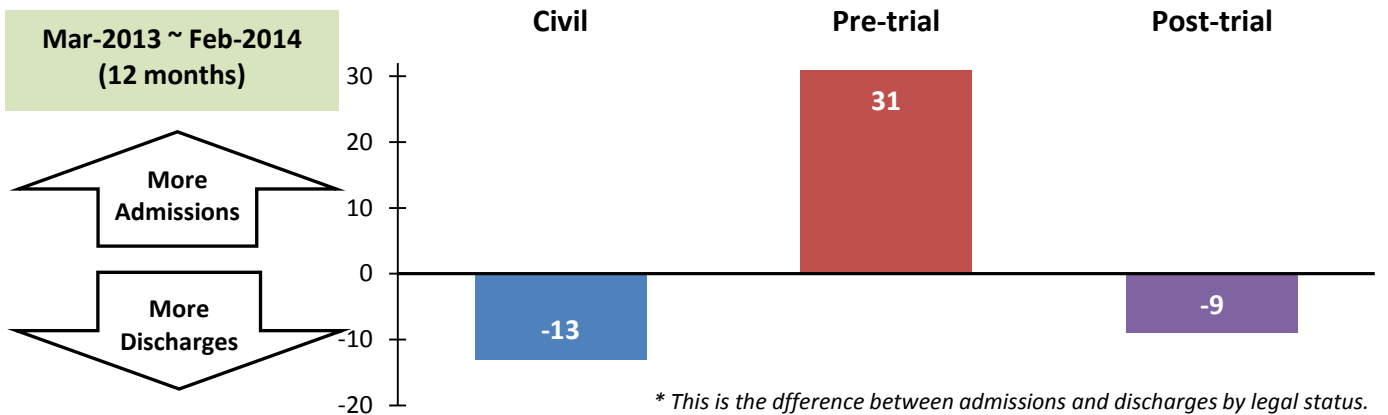
1. Admissions to SEH



2. Discharges from SEH

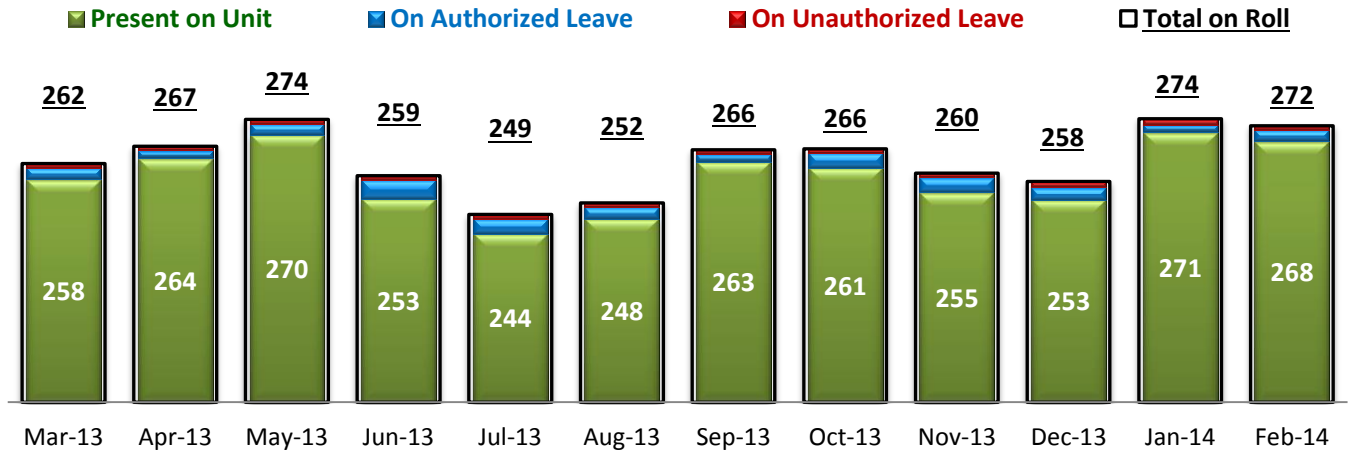


3. Admissions vs. Discharges by Legal Status for the Past 12 Months



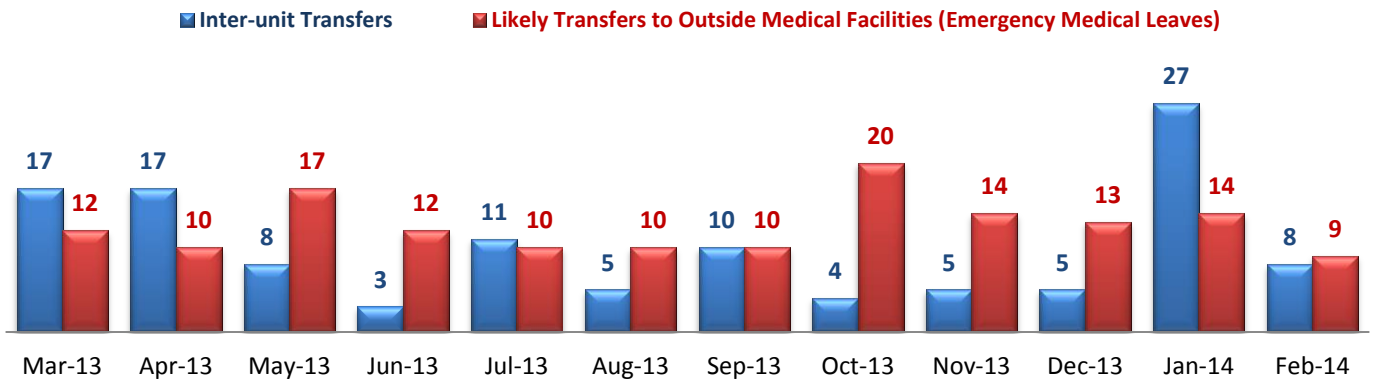
¹ NPR: National Public Rate as of June 2013 was published in November 2013 by National Association of State Mental Health Program Directors Research Institute (NRI), based on data collected from a number of state psychiatric hospitals nationwide.

4. Average Daily Census



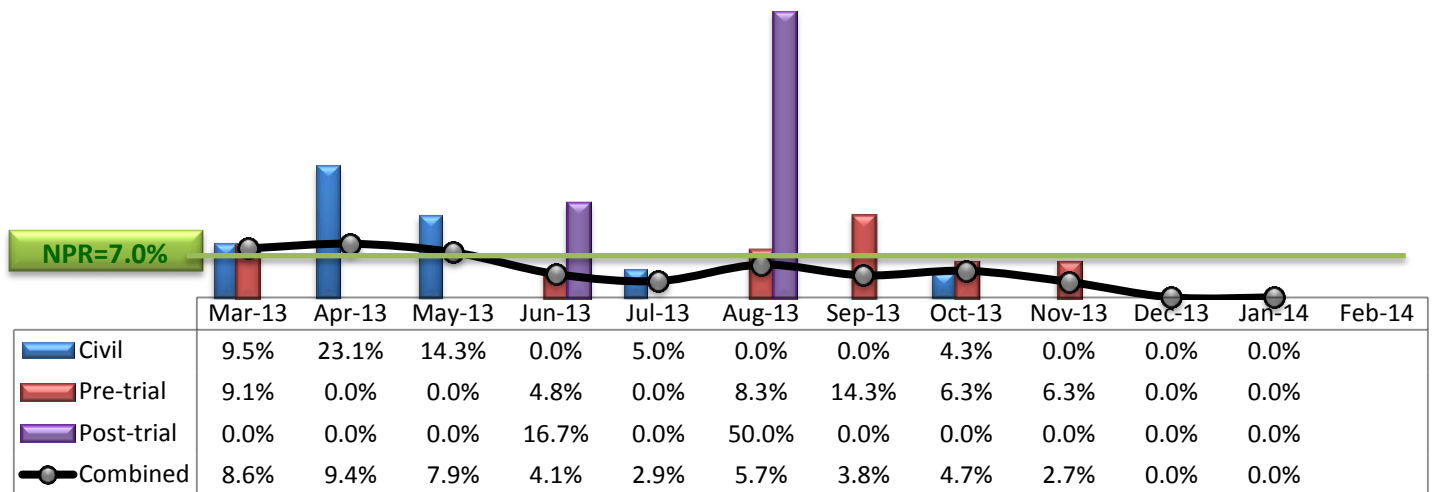
* Data above is the daily average number of individuals counted at 11:59 PM every day during each month.

5. Transfers



* Number of inter-unit transfers that occurred during month and number of emergency medical leaves that were initiated during month.

6. 30-Day Readmission Rate



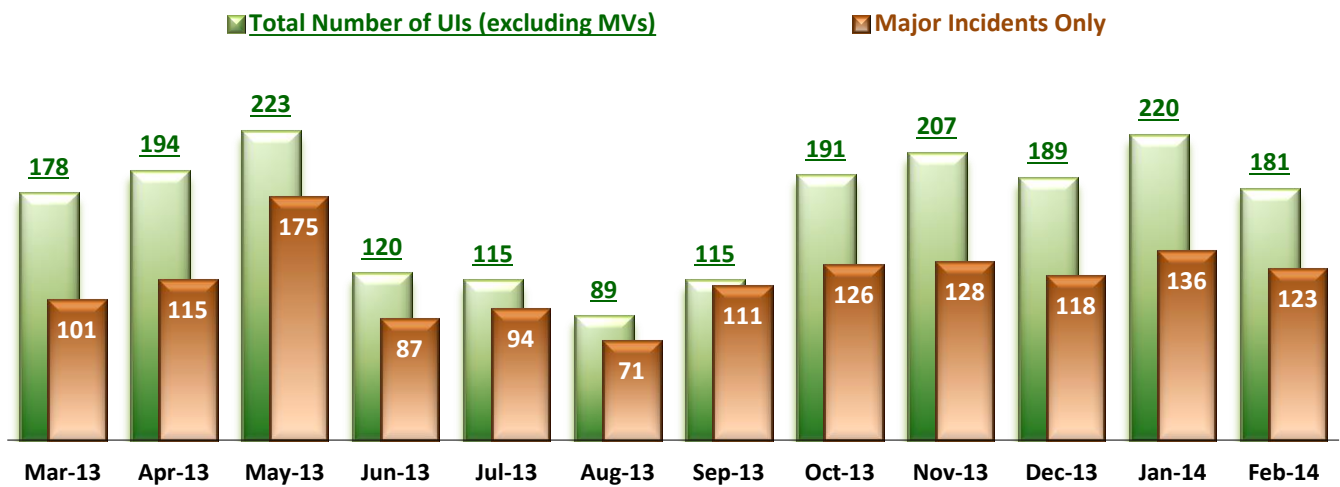
* Percent of discharges that returned to SEH within 30 days of discharges. It does not include those who may have been re-hospitalized at another psychiatric facility. This measure requires 30-day observation following discharge.

** The post-trial denominators (discharges) per month range only between one and six, making the monthly re-admission rate high when there is any. For example, in August 2013, there were two post trial discharges, of which one (50%) was readmitted within 30 days.

Key Trends: Unusual Incidents (7~16)

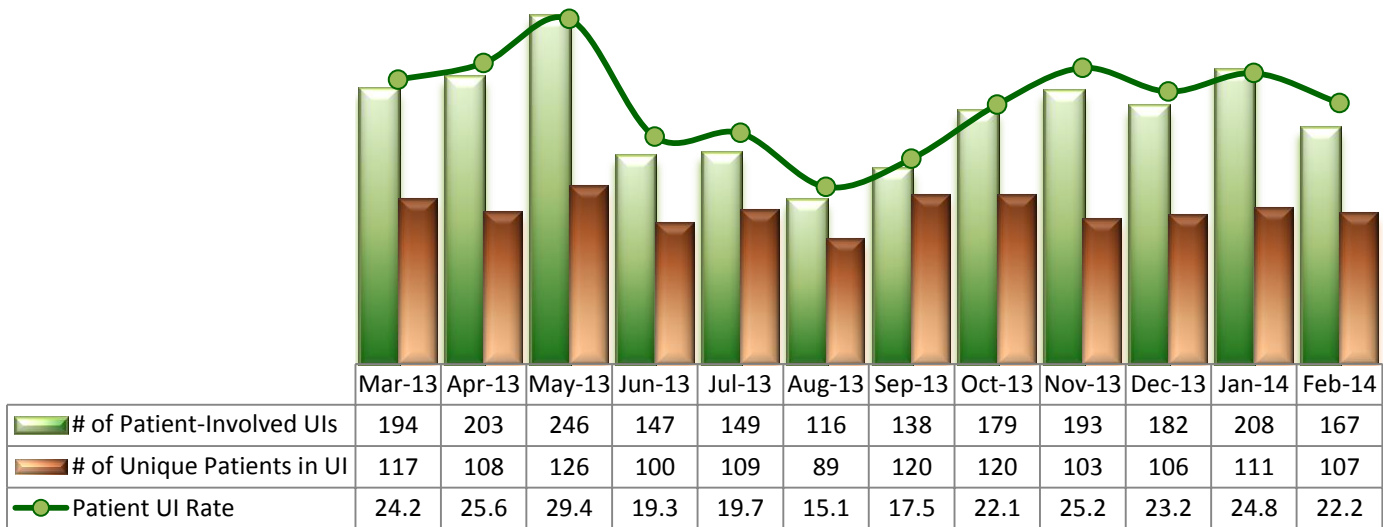
- The patient involved UI rate as well as the total number of unusual incidents (UIs) decreased to 181, which is below the monthly average (188) of the past 12 months. The number of UIs decreased at all severity levels and the frequency of assaults, psychiatric emergencies and injuries all decreased. The number of fall incidents increased but there was no major patient injury and staff injuries decreased as well.
- This decline in UIs in February is consistent with past trends where the frequency of UIs generally corresponds to the number of recent admissions: UIs tend to involve recent admissions more frequently than those who have been in care for long term and an increase of recent admissions is often followed by an increase of UIs.
- There was an unexpected death that followed an elopement in February.
- In February 2014, use of seclusions continued to increase slightly but remained far below NPR.

7. Unusual Incidents



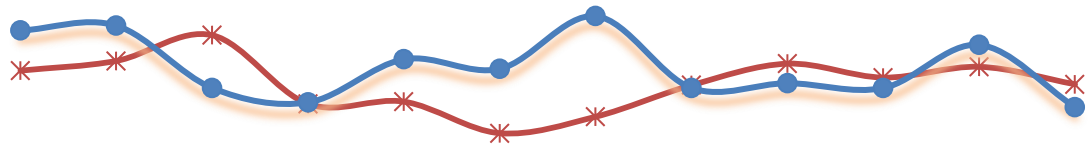
* Numbers above represent all types of the unusual incidents (UIs) that were reported to the Risk Manager by PRISM publication date, including those that did not involve any patients.

8. Patient-Involved Unusual Incidents



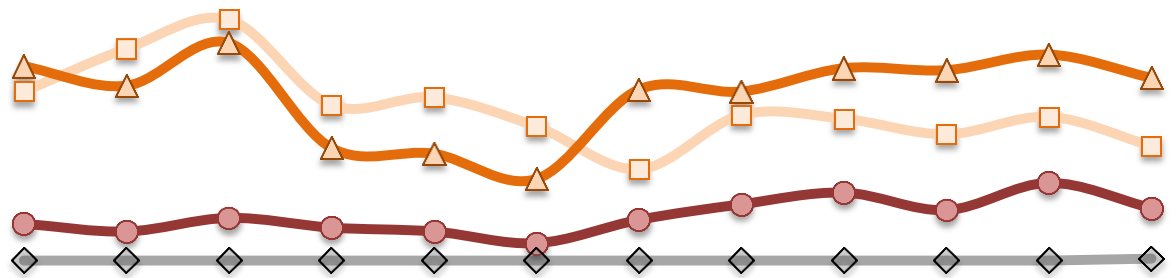
* The patient UI rate is the number of patient-involved unusual incidents reported for every 1000 inpatient days.

9. Admissions vs. Patient UI Rate



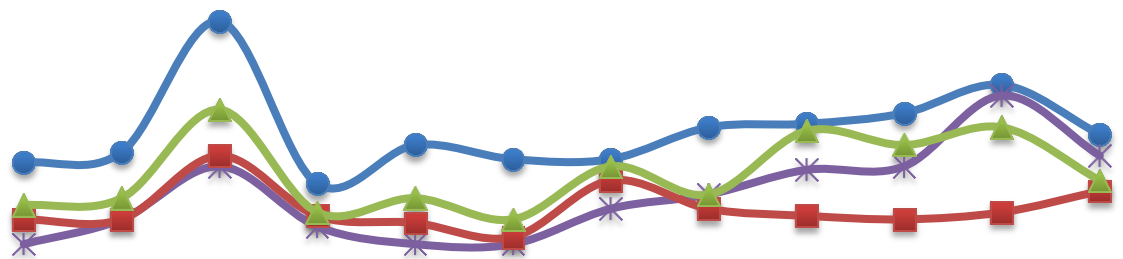
| | Mar-13 | Apr-13 | May-13 | Jun-13 | Jul-13 | Aug-13 | Sep-13 | Oct-13 | Nov-13 | Dec-13 | Jan-14 | Feb-14 |
|---------------------|--------|--------|--------|--------|--------|--------|--------|--------|--------|--------|--------|--------|
| —*— Patient UI Rate | 24.2 | 25.6 | 29.4 | 19.3 | 19.7 | 15.1 | 17.5 | 22.1 | 25.2 | 23.2 | 24.8 | 22.2 |
| —●— Admission | 43 | 44 | 31 | 28 | 37 | 35 | 46 | 31 | 32 | 31 | 40 | 27 |

10. Unusual Incidents by Severity



| | Mar-13 | Apr-13 | May-13 | Jun-13 | Jul-13 | Aug-13 | Sep-13 | Oct-13 | Nov-13 | Dec-13 | Jan-14 | Feb-14 |
|--------------|--------|--------|--------|--------|--------|--------|--------|--------|--------|--------|--------|--------|
| □ 1) Low | 87 | 109 | 124 | 80 | 84 | 69 | 47 | 75 | 73 | 65 | 74 | 59 |
| △ 2) Medium | 100 | 90 | 112 | 58 | 55 | 42 | 88 | 87 | 99 | 98 | 106 | 94 |
| ● 3) High | 19 | 15 | 22 | 17 | 15 | 9 | 21 | 29 | 35 | 26 | 40 | 27 |
| ◇ 4) Catstrp | 0 | 0 | 0 | 0 | 0 | 0 | 0 | 0 | 0 | 0 | 0 | 1 |
| Total UI | 206 | 214 | 258 | 155 | 154 | 120 | 156 | 191 | 207 | 189 | 220 | 181 |

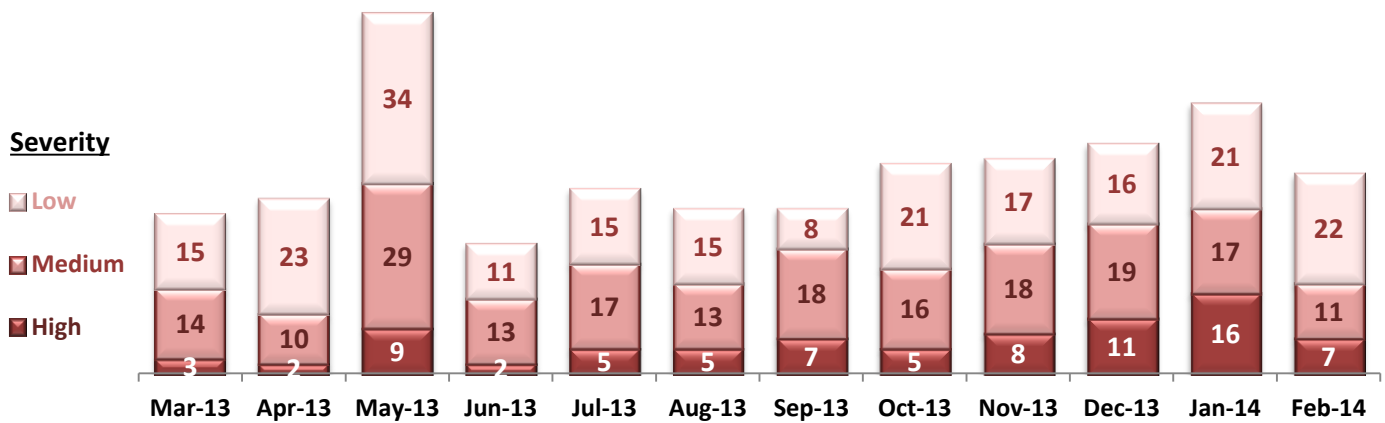
11. Selected Types of Incidents



| | Mar-13 | Apr-13 | May-13 | Jun-13 | Jul-13 | Aug-13 | Sep-13 | Oct-13 | Nov-13 | Dec-13 | Jan-14 | Feb-14 |
|--------------------|--------|--------|--------|--------|--------|--------|--------|--------|--------|--------|--------|--------|
| ● Physical Assault | 32 | 35 | 72 | 26 | 37 | 33 | 33 | 42 | 43 | 46 | 54 | 40 |
| * Pysch Emerg. | 9 | 16 | 31 | 14 | 9 | 9 | 19 | 23 | 30 | 31 | 51 | 34 |
| ■ Fall | 16 | 16 | 34 | 17 | 15 | 11 | 27 | 19 | 17 | 16 | 18 | 24 |
| ▲ Injury | 20 | 22 | 47 | 18 | 22 | 16 | 31 | 23 | 41 | 37 | 42 | 27 |

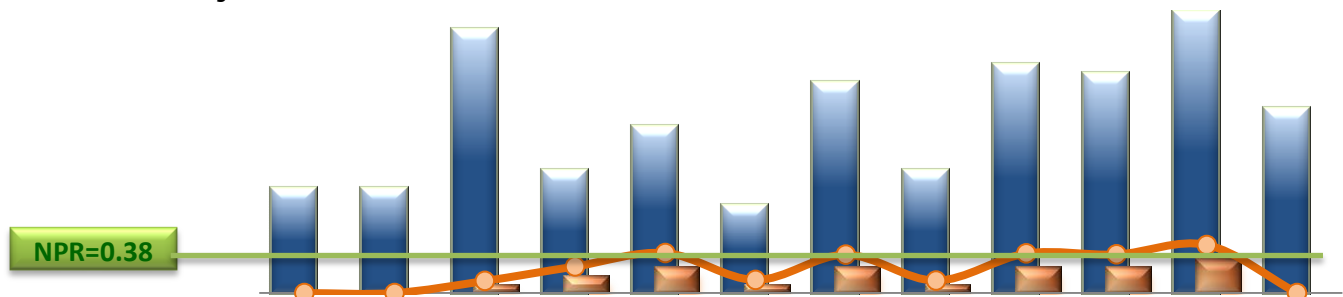
* These are incident types that are frequently reported. Some incidents may be counted in multiple categories. For example, a physical assault incident that accompanied psychiatric emergency and injury is counted under psychiatric emergency and injury as well as under physical assault. Injury is broadly defined to include any type of injuries regardless of the cause or severity level.

12. Physical Assaults by Severity



* Any physical assault that accompanies a code 13 or results in extensive injury needing off-unit treatment or transfer to ER is considered to be high severity, any physical assault that causes a minor injury that can be treated on unit is considered to be medium severity, and physical assault events that result in no injury are considered to be low severity.

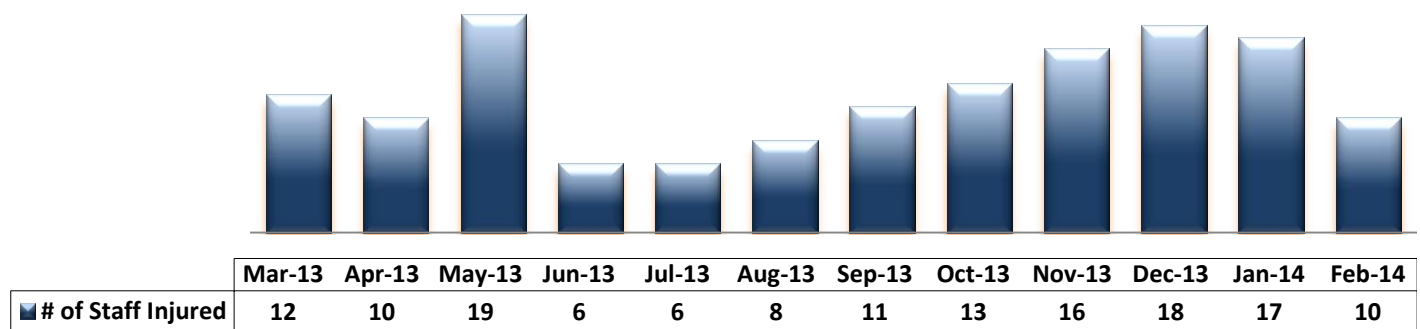
13. Patient Injuries



| | Mar-13 | Apr-13 | May-13 | Jun-13 | Jul-13 | Aug-13 | Sep-13 | Oct-13 | Nov-13 | Dec-13 | Jan-14 | Feb-14 |
|---------------------|--------|--------|--------|--------|--------|--------|--------|--------|--------|--------|--------|--------|
| Total Pts Injured | 12 | 12 | 30 | 14 | 19 | 10 | 24 | 14 | 26 | 25 | 32 | 21 |
| Major Pt Injuries* | 0 | 0 | 1 | 2 | 3 | 1 | 3 | 1 | 3 | 3 | 4 | 0 |
| Patient Injury Rate | 0.00 | 0.00 | 0.12 | 0.26 | 0.40 | 0.13 | 0.38 | 0.12 | 0.39 | 0.38 | 0.48 | 0.00 |

* Injury is broadly defined to include any type of injuries regardless of the cause or severity level. The total number of patients injured represents all of the reported injuries including minor injuries treated with first aid alone. However, the patient injury rate considers only the number of patient injuries that required beyond first-aid level treatment based on the NRI definition and the patient injury rate is the number of 'major' patient injuries per every 1000 inpatient days

14. Staff Injuries

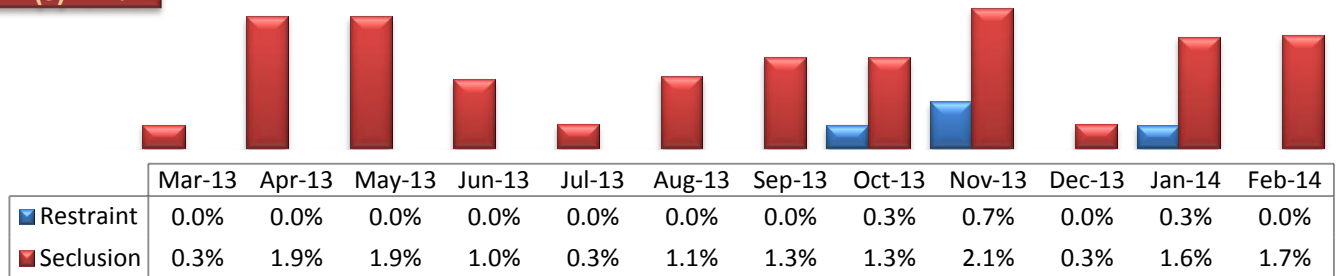


* Injury is broadly defined to include any type of injuries regardless of the cause or severity level. The total number of staff injured represents all of the reported staff injuries including minor injuries treated with first aid alone.

15. Percent of Patients Restrained or Secluded

NPR(R)=5.8%

NPR(S)=2.4%

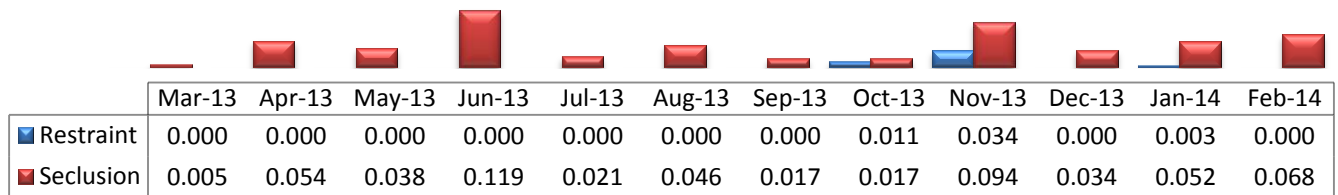


* Percent of unique patients who were restrained at least once and percent of unique patients who were secluded at least once. The denominator includes all individuals who were served in care >=1 day during month.

16. Restraint Hours Rate & Seclusion Hours Rate

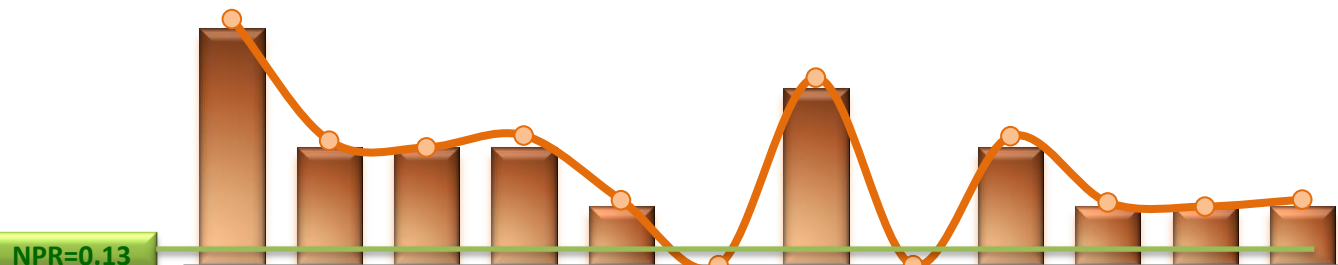
NPR(R)=0.71

NPR(S)=0.44



* Restraint/Seclusion Hours Rate: Number of hours spent in restraint/seclusion for every 1000 inpatient hours.

17. Elopements



| | Mar-13 | Apr-13 | May-13 | Jun-13 | Jul-13 | Aug-13 | Sep-13 | Oct-13 | Nov-13 | Dec-13 | Jan-14 | Feb-14 |
|-----------------|--------|--------|--------|--------|--------|--------|--------|--------|--------|--------|--------|--------|
| # of Elopements | 4 | 2 | 2 | 2 | 1 | 0 | 3 | 0 | 2 | 1 | 1 | 1 |
| Elopement Rate | 0.50 | 0.25 | 0.24 | 0.26 | 0.13 | 0.00 | 0.38 | 0.00 | 0.26 | 0.13 | 0.12 | 0.13 |

* It counts the total number of unauthorized leaves for any duration that were initiated during month and were recorded in Avatar. The elopement rate is the number of those unauthorized leaves that occurred for every 1000 inpatient days.

Key Trends: Medication Documentation, Medication Variance, ADR, and STAT (17~20)

- The number of reported medication variance events increased to 37 in February, but the number of ADR reports decreased to four (4) in February.
- The rate of missing documentation on medication administration in February slightly decreased but has remained above 0.7% since December 2013.
- The number of STAT orders and events significantly declined in February but the number of unique individuals who had at least one STAT event during month remained at the same level.

18. Reported Medication Variance Events



| | Mar-13 | Apr-13 | May-13 | Jun-13 | Jul-13 | Aug-13 | Sep-13 | Oct-13 | Nov-13 | Dec-13 | Jan-14 | Feb-14 |
|----------------|--------|--------|--------|--------|--------|--------|--------|--------|--------|--------|--------|--------|
| # of MV Events | 28 | 20 | 35 | 35 | 39 | 31 | 41 | 21 | 23 | 8 | 20 | 37 |
| MV Rate | 3.50 | 2.53 | 4.18 | 4.61 | 5.15 | 4.03 | 5.20 | 2.59 | 3.01 | 1.02 | 2.38 | 4.92 |

* MV Rate: Number of reported medication variance events that occurred for every 1000 inpatient days.

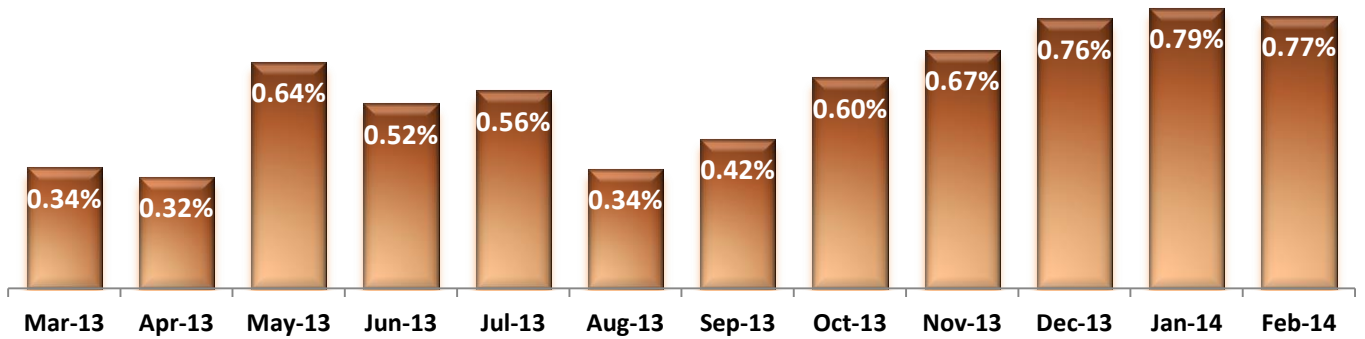
19. Reported Adverse Drug Reactions



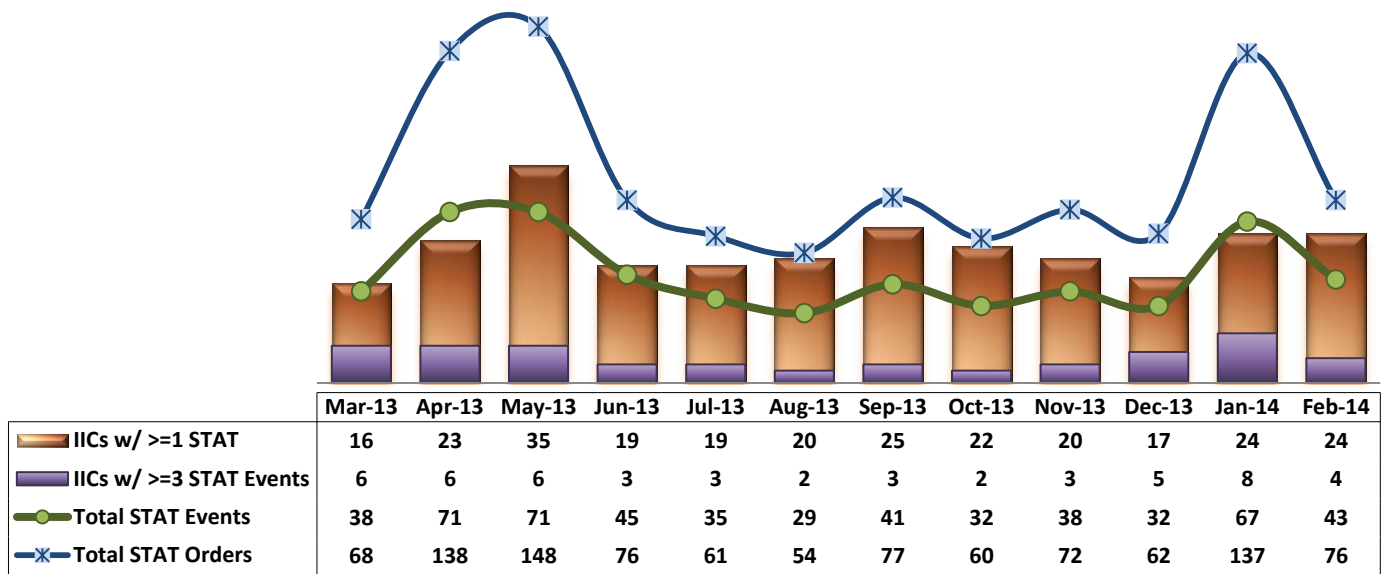
| | Mar-13 | Apr-13 | May-13 | Jun-13 | Jul-13 | Aug-13 | Sep-13 | Oct-13 | Nov-13 | Dec-13 | Jan-14 | Feb-14 |
|-----------|--------|--------|--------|--------|--------|--------|--------|--------|--------|--------|--------|--------|
| # of ADRs | 15 | 12 | 4 | 11 | 7 | 5 | 6 | 2 | 1 | 8 | 9 | 4 |
| ADR Rate | 1.87 | 1.52 | 0.48 | 1.45 | 0.92 | 0.65 | 0.76 | 0.25 | 0.13 | 1.02 | 1.07 | 0.53 |

* ADR Rate: Number of reported adverse drug reaction events that occurred for every 1000 inpatient days.

20. Percent of Missing Documentation on Med-Administration



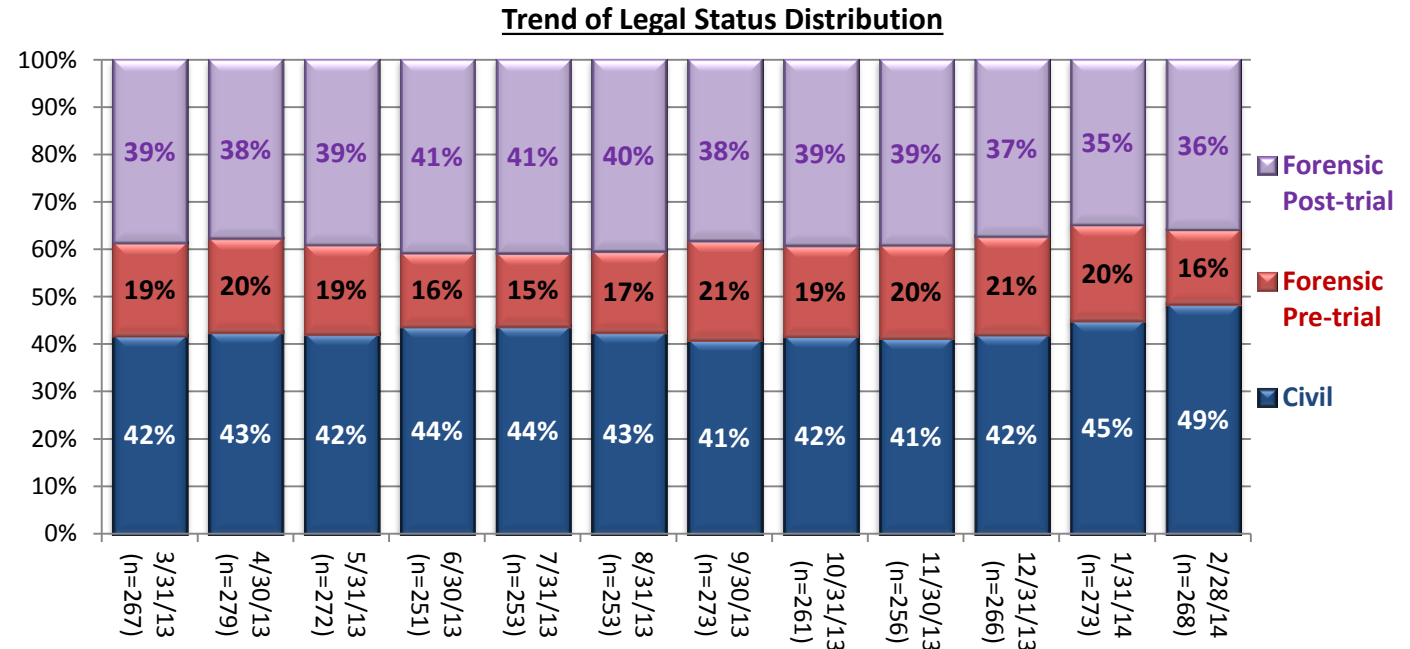
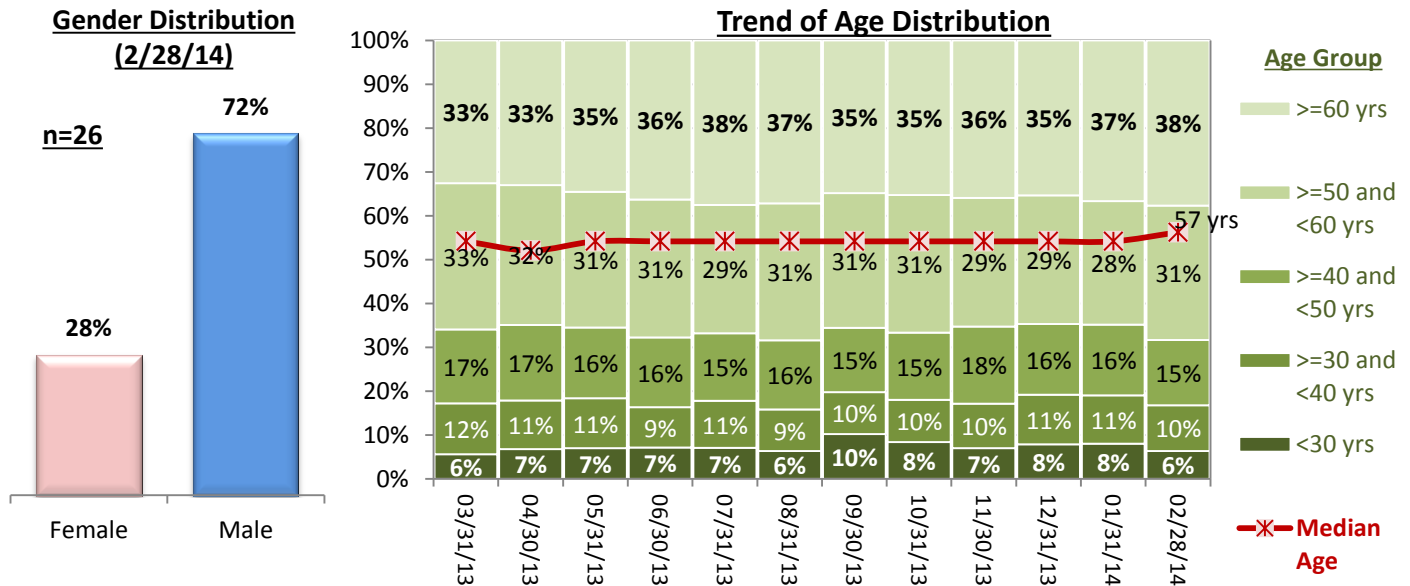
21. Number of STAT Events and Individuals Involved



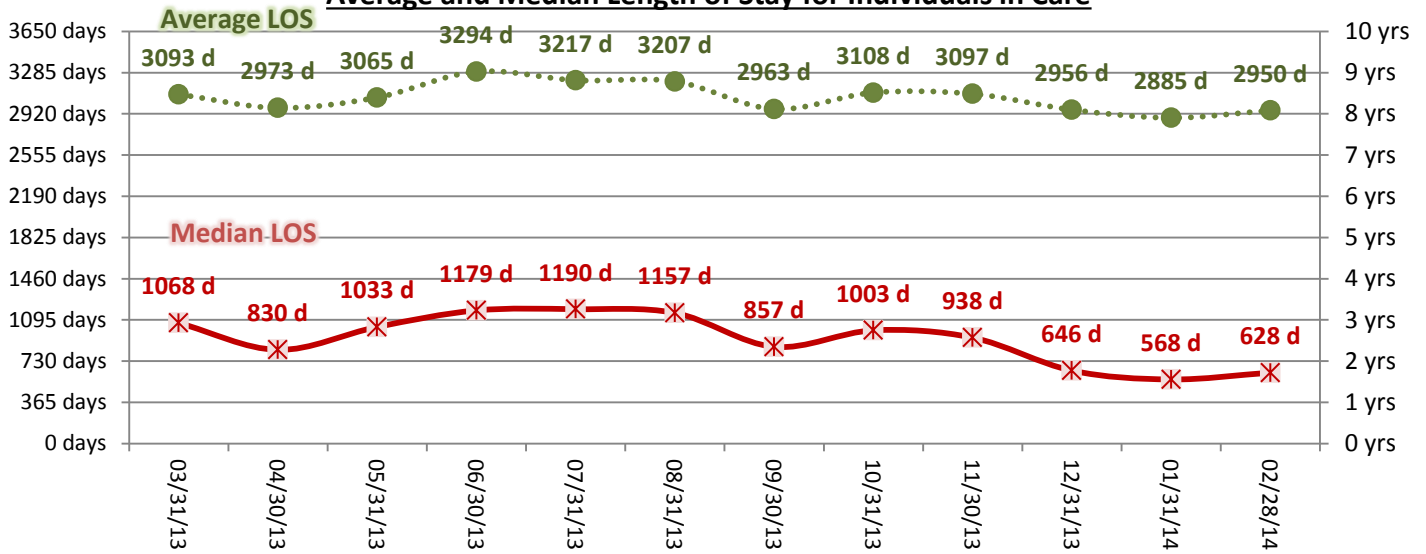
Key Trends: Demographics, Legal Status, and Length of Stay (21)

- The gender distribution slightly changes month by month but overall about 3 out of 10 individuals are female.
- The proportion of the elderly population in our care continued to grow throughout the year. The percentage of those 60 years or older gradually increased over the last 12 months (33% in March 2013 to 38% in February 2014) and the median age reached 57 years for the first time as of February 28, 2014.
- The proportion of individuals with a civil legal status increased for the past couple of months, reaching 49% as of February 2014.
- After a significant decline in the median length of stay (LOS) during the first four months of this fiscal year, it slightly increased to 628 days (20 months) as of February 28, 2014.

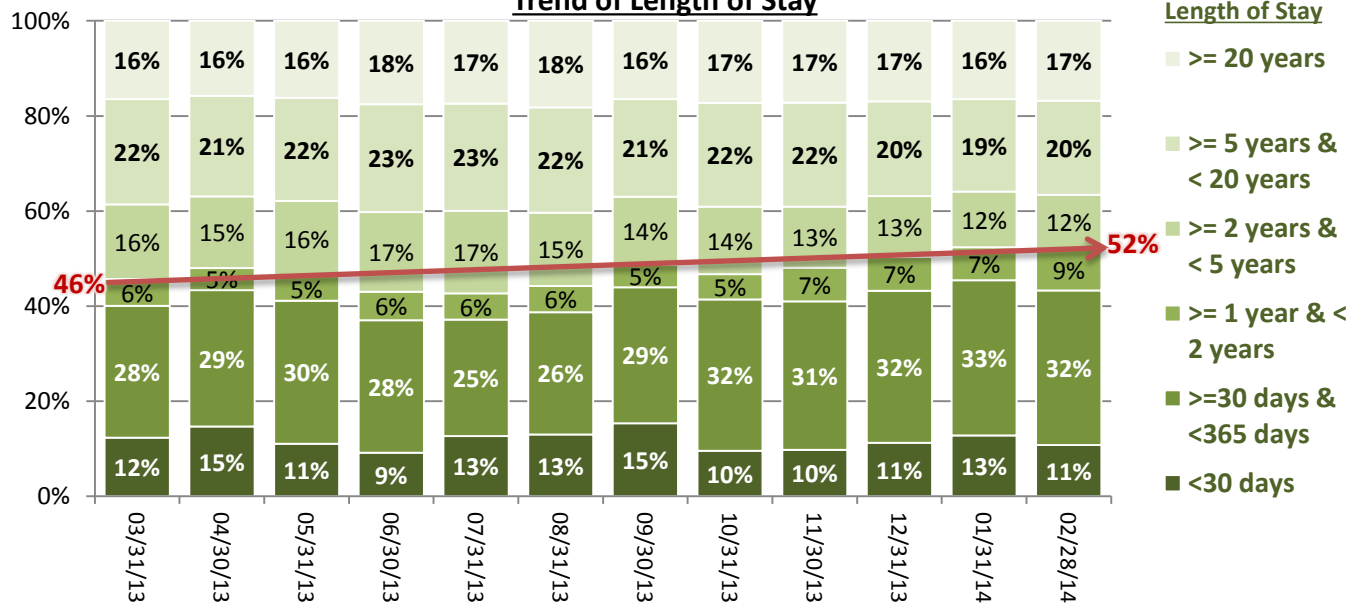
22. Demographics and Length of Stay



Average and Median Length of Stay for Individuals in Care



Trend of Length of Stay



Performance Related Information for Staff & Managers

1. Census, Admissions, Discharges & Transfers

Data Source: Avatar

Updated as of 03/13/14

| Category | Mar-13 | Apr-13 | May-13 | Jun-13 | Jul-13 | Aug-13 | Sep-13 | Oct-13 | Nov-13 | Dec-13 | Jan-14 | Feb-14 | Monthly Average | Total (12mths) | Figure | |
|--|--------------|-----------|-----------|-----------|------------|-----------|-----------|-----------|------------|-----------|-----------|-----------|-----------------|----------------|------------|----------|
| Admissions | Civil | 23 | 19 | 17 | 16 | 16 | 18 | 22 | 15 | 12 | 11 | 23 | 15 | 17 | 207 | Figure 1 |
| | Pre-trial | 18 | 22 | 13 | 10 | 18 | 16 | 21 | 14 | 18 | 19 | 16 | 11 | 16 | 196 | |
| | Post-trial | 2 | 3 | 1 | 2 | 3 | 1 | 3 | 2 | 2 | 1 | 1 | 1 | 2 | 22 | |
| | Total | 43 | 44 | 31 | 28 | 37 | 35 | 46 | 31 | 32 | 31 | 40 | 27 | 35 | 425 | |
| Discharges | Civil | 21 | 13 | 21 | 22 | 20 | 21 | 18 | 23 | 17 | 7 | 16 | 21 | 18 | 220 | Figure 2 |
| | Pre-trial | 11 | 18 | 16 | 21 | 13 | 12 | 7 | 16 | 16 | 12 | 12 | 11 | 14 | 165 | |
| | Post-trial | 3 | 1 | 1 | 6 | 2 | 2 | 1 | 4 | 4 | 2 | 5 | 0 | 3 | 31 | |
| | Total | 35 | 32 | 38 | 49 | 35 | 35 | 26 | 43 | 37 | 21 | 33 | 32 | 35 | 416 | |
| Net Increase During Month | Civil | 2 | 6 | -4 | -6 | -4 | -3 | 4 | -8 | -5 | 4 | 7 | -6 | | -13 | Figure 3 |
| | Pre-trial | 7 | 4 | -3 | -11 | 5 | 4 | 14 | -2 | 2 | 7 | 4 | 0 | | 31 | |
| | Post-trial | -1 | 2 | 0 | -4 | 1 | -1 | 2 | -2 | -2 | -1 | -4 | 1 | | -9 | |
| | Total | 8 | 12 | -7 | -21 | 2 | 0 | 20 | -12 | -5 | 10 | 7 | -5 | | 9 | |
| All Individuals on Roll at End of Month | 267 | 279 | 272 | 251 | 253 | 253 | 273 | 261 | 256 | 266 | 273 | 268 | 264 | | | |
| a. Present on Unit | 261 | 273 | 267 | 246 | 247 | 251 | 268 | 256 | 250 | 262 | 269 | 263 | 259 | | | |
| b. On AL | 5 | 4 | 4 | 3 | 5 | 1 | 3 | 4 | 5 | 2 | 3 | 5 | 4 | | | |
| c. On UL | 1 | 2 | 1 | 2 | 1 | 1 | 2 | 1 | 1 | 2 | 1 | 0 | 1 | | | |
| All Individuals on Roll: Daily Average during Month* | 262 | 267 | 274 | 259 | 249 | 252 | 266 | 266 | 260 | 258 | 274 | 272 | 263 | | | |
| a. Present on Unit | 258 | 264 | 270 | 253 | 244 | 248 | 263 | 261 | 255 | 253 | 271 | 268 | 259 | | Figure 4 | |
| b. On AL | 3 | 2 | 3 | 5 | 4 | 3 | 2 | 4 | 4 | 3 | 2 | 3 | 4 | | | |
| c. On UL | 1 | 1 | 1 | 1 | 1 | 1 | 1 | 1 | 1 | 1 | 2 | 1 | 0 | | | |
| Patient Days** | 8011 | 7918 | 8370 | 7597 | 7569 | 7693 | 7891 | 8101 | 7649 | 7844 | 8394 | 7514 | 7879 | 94551 | | |
| Inter-Unit Transfers during Month | 17 | 17 | 8 | 3 | 11 | 5 | 10 | 4 | 5 | 5 | 27 | 8 | 10 | 120 | Figure 5 | |
| Medical Leaves Initiated during Month | Emergency | 12 | 10 | 17 | 12 | 10 | 10 | 20 | 14 | 13 | 14 | 9 | 13 | 151 | | |
| | Non-Emer | 22 | 32 | 23 | 24 | 35 | 24 | 22 | 39 | 27 | 34 | 32 | 28 | 339 | | |
| | Total | 34 | 42 | 40 | 36 | 45 | 34 | 32 | 59 | 41 | 47 | 39 | 41 | 490 | | |
| Non-Medical Leaves Initiated during Month | 70 | 89 | 80 | 92 | 88 | 96 | 97 | 146 | 121 | 138 | 142 | 141 | 108 | 1300 | | |
| UL Initiated during Month | 4 | 2 | 2 | 2 | 1 | 0 | 3 | 0 | 2 | 1 | 1 | 1 | 2 | 19 | | |
| Total Unique Patients Served during Month | 294 | 310 | 310 | 299 | 286 | 285 | 299 | 299 | 291 | 287 | 306 | 300 | 297 | | | |
| 30 Day Readmission *** | Civil | 2 | 3 | 3 | 0 | 1 | 0 | 0 | 1 | 0 | 0 | 0 | | 1 | 10 | |
| | Pre-trial | 1 | 0 | 0 | 1 | 0 | 1 | 1 | 1 | 1 | 0 | 0 | | 1 | 6 | |
| | Post-trial | 0 | 0 | 0 | 1 | 0 | 1 | 0 | 0 | 0 | 0 | 0 | | 0 | 2 | |
| | Total | 3 | 3 | 3 | 2 | 1 | 2 | 1 | 2 | 1 | 0 | 0 | | 2 | 18 | |

* This is the average number of individuals served on a given day for the respective month. Due to rounding from average calculation, numbers from its subcategories a, b, & c may not add up to the total number on this row.

** It counts the number of patients who are present on the unit and excludes those on authorized or unauthorized leave at 11:59pm on a given day.

*** Number of patients returning within 30 days of discharges that occurred during month.

Performance Related Information for Staff & Managers

2. Key Performance Indicators

Data Source: UI DB, MV DB, ADR DB, Restraint/Seclusion Log, and Avatar

Updated as of 03/13/14

| Category | Mar-13 | Apr-13 | May-13 | Jun-13 | Jul-13 | Aug-13 | Sep-13 | Oct-13 | Nov-13 | Dec-13 | Jan-14 | Feb-14 | Monthly Average | NPR* (Jun-13) | Figure | |
|-------------------------------------|------------------|--------|--------|--------|--------|--------|--------|--------|--------|--------|--------|--------|-----------------|---------------|-----------|-----------|
| 30 Day Readmit (Discharge Cohort)** | Civil | 9.5% | 23.1% | 14.3% | 0.0% | 5.0% | 0.0% | 0.0% | 4.3% | 0.0% | 0.0% | 0.0% | 5.0% | | Figure 6 | |
| | Pre-trial | 9.1% | 0.0% | 0.0% | 4.8% | 0.0% | 8.3% | 14.3% | 6.3% | 6.3% | 0.0% | 0.0% | 4.0% | | | |
| | Post-trial | 0.0% | 0.0% | 0.0% | 16.7% | 0.0% | 50.0% | 0.0% | 0.0% | 0.0% | 0.0% | 0.0% | 7.0% | | | |
| | Combined | 8.6% | 9.4% | 7.9% | 4.1% | 2.9% | 5.7% | 3.8% | 4.7% | 2.7% | 0.0% | 0.0% | 4.7% | 6.9% | | |
| Number of Unusual Incidents* | 178 | 194 | 223 | 120 | 115 | 89 | 115 | 191 | 207 | 189 | 220 | 181 | 188 | | Figure 7 | |
| UI by Severity | Catastrophe | 0 | 0 | 0 | 0 | 0 | 0 | 0 | 0 | 0 | 0 | 1 | 0 | | Figure 8 | |
| | High | 19 | 15 | 22 | 17 | 15 | 9 | 21 | 29 | 35 | 26 | 40 | 23 | | | |
| | Medium | 100 | 90 | 112 | 58 | 55 | 42 | 88 | 87 | 99 | 98 | 106 | 94 | 86 | | |
| | Low | 87 | 109 | 124 | 80 | 84 | 69 | 47 | 75 | 73 | 65 | 74 | 59 | 79 | | |
| Patient Unusual Incident Rate | 24.2 | 25.6 | 29.4 | 19.3 | 19.7 | 15.1 | 17.5 | 22.1 | 25.2 | 23.2 | 24.8 | 22.2 | 22.4 | | Figure 9 | |
| Physical Assault Incident Rate | 4.0 | 4.4 | 8.6 | 3.4 | 4.9 | 4.3 | 4.2 | 5.2 | 5.6 | 5.9 | 6.4 | 5.3 | 5.2 | | | |
| Selected Types of Incidents | Physical Assault | 32 | 35 | 72 | 26 | 37 | 33 | 33 | 42 | 43 | 46 | 54 | 40 | 41 | | Figure 10 |
| | Psych Emergency | 9 | 16 | 31 | 14 | 9 | 9 | 19 | 23 | 30 | 31 | 51 | 34 | 23 | | |
| | Fall | 16 | 16 | 34 | 17 | 15 | 11 | 27 | 19 | 17 | 16 | 18 | 24 | 19 | | |
| | Injury | 20 | 22 | 47 | 18 | 22 | 16 | 31 | 23 | 41 | 37 | 42 | 27 | 29 | | |
| Physical Assaults by Severity | High | 3 | 2 | 9 | 2 | 5 | 5 | 7 | 5 | 8 | 11 | 16 | 7 | 7 | | Figure 11 |
| | Medium | 14 | 10 | 29 | 13 | 17 | 13 | 18 | 16 | 18 | 19 | 17 | 11 | 16 | | |
| | Low | 15 | 23 | 34 | 11 | 15 | 15 | 8 | 21 | 17 | 16 | 21 | 22 | 18 | | |
| Patient Injury Rate*** | 0.00 | 0.00 | 0.12 | 0.26 | 0.40 | 0.13 | 0.38 | 0.12 | 0.39 | 0.38 | 0.48 | 0.00 | 0.22 | 0.38 | | |
| Patients with Major Injuries*** | 0 | 0 | 1 | 2 | 3 | 1 | 3 | 1 | 3 | 3 | 4 | 0 | 2 | | Figure 12 | |
| Total Patients Injured*** | 12 | 12 | 30 | 14 | 19 | 10 | 24 | 14 | 26 | 25 | 32 | 21 | 20 | | | |
| Total Staff Injured*** | 12 | 10 | 19 | 6 | 6 | 8 | 11 | 13 | 16 | 18 | 17 | 10 | 12 | | Figure 13 | |
| Elopement Rate | 0.50 | 0.25 | 0.24 | 0.26 | 0.13 | 0.00 | 0.38 | 0.00 | 0.26 | 0.13 | 0.12 | 0.13 | 0.22 | 0.13 | Figure 16 | |
| Medication Variance Rate | 3.50 | 2.53 | 4.18 | 4.61 | 5.15 | 4.03 | 5.20 | 2.59 | 3.01 | 1.02 | 2.38 | 4.92 | 3.57 | | Figure 17 | |
| Adverse Drug Reaction Rate | 1.87 | 1.52 | 0.48 | 1.45 | 0.92 | 0.65 | 0.76 | 0.25 | 0.13 | 1.02 | 1.07 | 0.53 | 0.89 | | Figure 18 | |
| Missing Med-Admin Documentation | 0.34% | 0.32% | 0.64% | 0.52% | 0.56% | 0.34% | 0.42% | 0.60% | 0.67% | 0.76% | 0.79% | 0.77% | 0.56% | | Figure 19 | |
| Percent of Patients Restrained | 0.0% | 0.0% | 0.0% | 0.0% | 0.0% | 0.0% | 0.0% | 0.3% | 0.7% | 0.0% | 0.3% | 0.0% | 0.1% | 5.8% | Figure 14 | |
| Percent of Patients Secluded | 0.3% | 1.9% | 1.9% | 1.0% | 0.3% | 1.1% | 1.3% | 1.3% | 2.1% | 0.3% | 1.6% | 1.7% | 1.3% | 2.4% | | |
| Restraint Hours Rate | 0.000 | 0.000 | 0.000 | 0.000 | 0.000 | 0.000 | 0.000 | 0.011 | 0.034 | 0.000 | 0.003 | 0.000 | 0.004 | 0.71 | Figure 15 | |
| Seclusion Hours Rate | 0.005 | 0.054 | 0.038 | 0.119 | 0.021 | 0.046 | 0.017 | 0.017 | 0.094 | 0.034 | 0.052 | 0.068 | 0.047 | 0.44 | | |

* National Public Rate, NASMHPD Research Institute, National Research Institute (NRI), Data as of June 2013, Published in November 2013.

** Percentage of patients returning within 30 days of discharges that occurred during month

*** Refer to the next page [UI & Medication]

Performance Related Information for Staff & Managers

3. Unusual Incident & Medication

Data Source: UI DB, MV DB, ADR DB, and Avatar

Updated as of 03/13/14

| Category | | Mar-13 | Apr-13 | May-13 | Jun-13 | Jul-13 | Aug-13 | Sep-13 | Oct-13 | Nov-13 | Dec-13 | Jan-14 | Feb-14 | Monthly Average | Total (12mths) | NPR* (Jun-13) |
|-------------------------------------|---------------------------|--------|--------|--------|--------|--------|--------|--------|--------|--------|--------|--------|--------|-----------------|----------------|---------------|
| Unusual Incidents (excluding MV)** | Total UIs | 206 | 214 | 258 | 155 | 154 | 120 | 156 | 191 | 207 | 189 | 220 | 181 | 188 | 2251 | |
| | Major UIs Only | 101 | 115 | 175 | 87 | 94 | 71 | 111 | 126 | 128 | 118 | 136 | 123 | 115 | 1385 | |
| | Pt Involved UI Only | 194 | 203 | 246 | 147 | 149 | 116 | 138 | 179 | 193 | 182 | 208 | 167 | 177 | 2122 | |
| | Patient UI Rate | 24.2 | 25.6 | 29.4 | 19.3 | 19.7 | 15.1 | 17.5 | 22.1 | 25.2 | 23.2 | 24.8 | 22.2 | 22.4 | | |
| | Unique Pts Involved in UI | 117 | 108 | 126 | 100 | 109 | 89 | 120 | 120 | 103 | 106 | 111 | 107 | 110 | 1316 | |
| Selected Types of Incidents | Physical Assault | 32 | 35 | 72 | 26 | 37 | 33 | 33 | 42 | 43 | 46 | 54 | 40 | 41 | 493 | |
| | Psych Emergency | 9 | 16 | 31 | 14 | 9 | 9 | 19 | 23 | 30 | 31 | 51 | 34 | 23 | 276 | |
| | Fall | 16 | 16 | 34 | 17 | 15 | 11 | 27 | 19 | 17 | 16 | 18 | 24 | 19 | 230 | |
| | Injury | 20 | 22 | 47 | 18 | 22 | 16 | 31 | 23 | 41 | 37 | 42 | 27 | 29 | 346 | |
| Physical Assault Rate | | 4.0 | 4.4 | 8.6 | 3.4 | 4.9 | 4.3 | 4.2 | 5.2 | 5.6 | 5.9 | 6.4 | 5.3 | 5.2 | | |
| UI by Severity | Catastrophe | 0 | 0 | 0 | 0 | 0 | 0 | 0 | 0 | 0 | 0 | 0 | 1 | 0 | 1 | |
| | High | 19 | 15 | 22 | 17 | 15 | 9 | 21 | 29 | 35 | 26 | 40 | 27 | 23 | 275 | |
| | Medium | 100 | 90 | 112 | 58 | 55 | 42 | 88 | 87 | 99 | 98 | 106 | 94 | 86 | 1029 | |
| | Low | 87 | 109 | 124 | 80 | 84 | 69 | 47 | 75 | 73 | 65 | 74 | 59 | 79 | 946 | |
| Physical Assaults by Severity | High | 3 | 2 | 9 | 2 | 5 | 5 | 7 | 5 | 8 | 11 | 16 | 7 | 7 | 80 | |
| | Medium | 14 | 10 | 29 | 13 | 17 | 13 | 18 | 16 | 18 | 19 | 17 | 11 | 16 | 195 | |
| | Low | 15 | 23 | 34 | 11 | 15 | 15 | 8 | 21 | 17 | 16 | 21 | 22 | 18 | 218 | |
| Total Patients Injured*** | | 12 | 12 | 30 | 14 | 19 | 10 | 24 | 14 | 26 | 25 | 32 | 21 | 20 | 239 | |
| Patients with Major Injuries*** | | 0 | 0 | 1 | 2 | 3 | 1 | 3 | 1 | 3 | 3 | 4 | 0 | 2 | 21 | |
| Patient Injury Rate*** | | 0.00 | 0.00 | 0.12 | 0.26 | 0.40 | 0.13 | 0.38 | 0.12 | 0.39 | 0.38 | 0.48 | 0.00 | 0.22 | | 0.38 |
| Total Staff Injured** | | 12 | 10 | 19 | 6 | 6 | 8 | 11 | 13 | 16 | 18 | 17 | 10 | 12 | | |
| Total UL Incident Reports | | 3 | 2 | 2 | 1 | 4 | 1 | 3 | 1 | 2 | 2 | 0 | 1 | 2 | | |
| Total UIs Documented in Avatar | | 4 | 2 | 2 | 2 | 1 | 0 | 3 | 0 | 2 | 1 | 1 | 1 | 2 | 21 | |
| Elopement Rate | | 0.50 | 0.25 | 0.24 | 0.26 | 0.13 | 0.00 | 0.38 | 0.00 | 0.26 | 0.13 | 0.12 | 0.13 | 0.22 | | 0.13 |
| Med Variance (MV) Reports** | | 28 | 20 | 35 | 35 | 39 | 31 | 41 | 21 | 23 | 8 | 20 | 37 | 28 | 338 | |
| MV Rate | | 3.50 | 2.53 | 4.18 | 4.61 | 5.15 | 4.03 | 5.20 | 2.59 | 3.01 | 1.02 | 2.38 | 4.92 | 3.57 | | |
| Adverse Drug Reactions Reports | | 15 | 12 | 4 | 11 | 7 | 5 | 6 | 2 | 1 | 8 | 9 | 4 | 7 | 84 | |
| ADR Rate | | 1.87 | 1.52 | 0.48 | 1.45 | 0.92 | 0.65 | 0.76 | 0.25 | 0.13 | 1.02 | 1.07 | 0.53 | 0.89 | | |
| Total Med Administrations Scheduled | | 108150 | 103057 | 107694 | 102644 | 102303 | 102848 | 101049 | 95559 | 101422 | 102249 | 108474 | 98616 | | 1234065 | |
| Total Missing Documentations | | 370 | 326 | 690 | 537 | 572 | 348 | 427 | 570 | 684 | 780 | 860 | 759 | | 6923 | |
| Percent of Missing Documentation | | 0.34% | 0.32% | 0.64% | 0.52% | 0.56% | 0.34% | 0.42% | 0.60% | 0.67% | 0.76% | 0.79% | 0.77% | | 0.56% | |
| Total STAT Orders | | 68 | 138 | 148 | 76 | 61 | 54 | 77 | 60 | 72 | 62 | 137 | 76 | 86 | | Figure 17 |
| Total STAT Events**** | | 38 | 71 | 71 | 45 | 35 | 29 | 41 | 32 | 38 | 32 | 67 | 43 | 45 | | |
| Total Individuals Involved >=1 STAT | | 16 | 23 | 35 | 19 | 19 | 20 | 25 | 22 | 20 | 17 | 24 | 24 | 22 | | |
| Total Patients with >=3 STAT Events | | 6 | 6 | 6 | 3 | 3 | 2 | 3 | 2 | 3 | 5 | 8 | 4 | 4 | | |

* National Public Rate, NASMHPD Research Institute, National Research Institute (NRI), Data as of June 2013, Published in November 2013.

** Numbers may change if any additional UI report is made after the data run date from UI database (around the 15th of the following month); According to the revised UI policy as of November 4, 2013, a medication variance (MV) incident is no longer considered to be an unusual incident. While the official number of UIs until October 2013 remains as including MVs, for PRISM publication, UI data for the past 12 months herein has been reanalyzed in order to show the UI trend in consistent logic.

*** Injury is broadly defined to include any type of injuries regardless of the cause or severity level. The total number of patients injured represents all of the reported injuries including minor injuries treated with first aid alone. However, the patient injury rate considers only the number of patient injuries that required beyond first-aid level treatment based on the NRI definition and the patient injury rate is the number of 'major' patient injuries per every 1000 inpatient days

**** One STAT event may involve more than one STAT order for the same patient. Any orders placed within 20 minute timeframe are considered to belong to one STAT event.

Performance Related Information for Staff & Managers

4. Restraint & Seclusion

Data Source: Restraint/Seclusion Log and UI DB (for # of total events and patients) and Avatar (for patient days/hours)

Updated as of 03/13/14

| Category | Mar-13 | Apr-13 | May-13 | Jun-13 | Jul-13 | Aug-13 | Sep-13 | Oct-13 | Nov-13 | Dec-13 | Jan-14 | Feb-14 | Monthly Average | Total (12mths) | NPR* (Jun-13) |
|--------------------------------------|--------|--------|--------|--------|--------|--------|--------|--------|--------|--------|--------|--------|-----------------|----------------|---------------|
| Number of Restraint Events | 0 | 0 | 0 | 0 | 0 | 0 | 0 | 2 | 2 | 0 | 1 | 0 | 0.4 | 5 | |
| Number of Unique Patients Restrained | 0 | 0 | 0 | 0 | 0 | 0 | 0 | 1 | 2 | 0 | 1 | 0 | 0.3 | | |
| Percentage of Patients Restrained | 0.0% | 0.0% | 0.0% | 0.0% | 0.0% | 0.0% | 0.0% | 0.3% | 0.7% | 0.0% | 0.3% | 0.0% | 0.1% | | 5.8% |
| Total Restraint Hours (h:mm) | 0:00 | 0:00 | 0:00 | 0:00 | 0:00 | 0:00 | 0:00 | 2:08 | 6:15 | 0:00 | 0:35 | 0:00 | 0:44 | 8:58 | |
| Restraint Hours Rate | 0.000 | 0.000 | 0.000 | 0.000 | 0.000 | 0.000 | 0.000 | 0.011 | 0.034 | 0.000 | 0.003 | 0.000 | 0.004 | | 0.71 |
| Number of Seclusion Events | 1 | 10 | 12 | 5 | 4 | 5 | 4 | 4 | 11 | 6 | 6 | 13 | 6.8 | 81 | |
| Number of Unique Patients Secluded | 1 | 6 | 6 | 3 | 1 | 3 | 4 | 4 | 6 | 1 | 5 | 5 | 3.8 | | |
| Percentage of Patients Secluded | 0.3% | 1.9% | 1.9% | 1.0% | 0.3% | 1.1% | 1.3% | 1.3% | 2.1% | 0.3% | 1.6% | 1.7% | 1.3% | | 2.4% |
| Total Seclusion Hours (h:mm) | 1:00 | 10:18 | 7:44 | 21:45 | 3:50 | 8:30 | 3:10 | 3:20 | 17:11 | 6:20 | 10:34 | 12:15 | 8:49 | 105:57 | |
| Seclusion Hours Rate | 0.005 | 0.054 | 0.038 | 0.119 | 0.021 | 0.046 | 0.017 | 0.017 | 0.094 | 0.034 | 0.052 | 0.068 | 0.047 | | 0.44 |

* National Public Rate, NASMHPD Research Institute, National Research Institute (NRI), Data as of June 2013, Published in November 2013.

Performance Related Information for Staff & Managers

5. Demographic Information of Individuals in Care

Data Source: Avatar

Updated as of 03/13/14

| Category | Sub-group | Mar-13 | Apr-13 | May-13 | Jun-13 | Jul-13 | Aug-13 | Sep-13 | Oct-13 | Nov-13 | Dec-13 | Jan-14 | Feb-14 | Monthly Average | Percent* |
|--|-------------------------------------|---------------|---------------|---------------|---------------|---------------|---------------|---------------|---------------|---------------|---------------|---------------|---------------|-----------------|--------------|
| Total Active (on Roll) at End of Month* | | 267 | 279 | 272 | 251 | 253 | 253 | 273 | 261 | 256 | 266 | 273 | 268 | 264 | |
| Gender | Female | 77 | 80 | 78 | 67 | 73 | 70 | 70 | 68 | 69 | 72 | 79 | 75 | 73 | 27.7% |
| | Male | 190 | 199 | 194 | 184 | 180 | 183 | 203 | 193 | 187 | 194 | 194 | 193 | 191 | 72.3% |
| Age | Median Age (Years) | 56 yrs | 55 yrs | 56 yrs | 56 yrs | 56 yrs | 56 yrs | 56 yrs | 56 yrs | 56 yrs | 56 yrs | 56 yrs | 57 yrs | 56 yrs | |
| | <30 years old | 15 | 19 | 19 | 18 | 18 | 16 | 28 | 22 | 18 | 21 | 22 | 17 | 19 | 7.3% |
| | >=30 and <40 years old | 31 | 31 | 31 | 23 | 27 | 24 | 26 | 25 | 26 | 30 | 30 | 28 | 28 | 10.5% |
| | >=40 and <50 years old | 45 | 48 | 44 | 40 | 39 | 40 | 40 | 40 | 40 | 45 | 43 | 44 | 42 | 16.0% |
| | >=50 and <60 years old | 89 | 89 | 84 | 79 | 74 | 79 | 84 | 84 | 82 | 75 | 78 | 77 | 81 | 30.6% |
| | >=60 years old | 87 | 92 | 94 | 91 | 95 | 94 | 95 | 95 | 92 | 92 | 94 | 100 | 94 | 35.5% |
| Legal Status of Individuals on Roll at End of Month | Emergency | 22 | 29 | 31 | 27 | 19 | 18 | 27 | 18 | 19 | 26 | 34 | 33 | 25 | 9.6% |
| | Inpatient Commitment | 23 | 21 | 21 | 21 | 23 | 20 | 22 | 24 | 23 | 23 | 26 | 28 | 23 | 8.7% |
| | Outpatient Commitment | 23 | 24 | 18 | 18 | 19 | 24 | 21 | 25 | 23 | 22 | 22 | 22 | 22 | 8.2% |
| | Voluntary | 44 | 45 | 45 | 44 | 50 | 46 | 42 | 42 | 41 | 41 | 41 | 47 | 44 | 16.6% |
| | Civil Sub-total | 112 | 119 | 115 | 110 | 111 | 108 | 112 | 109 | 106 | 112 | 123 | 130 | 114 | 43.1% |
| | DC Exam | 48 | 54 | 50 | 38 | 38 | 41 | 55 | 48 | 48 | 49 | 54 | 41 | 48 | 18.0% |
| | Mentally Incompetent | 4 | 1 | 1 | 1 | 1 | 2 | 2 | 2 | 2 | 1 | 1 | 1 | 2 | 0.6% |
| | Forensic Pre-trial Sub-total | 52 | 55 | 51 | 39 | 39 | 43 | 57 | 50 | 50 | 55 | 55 | 42 | 49 | 18.5% |
| | NGBRI - DC | 89 | 90 | 91 | 87 | 89 | 88 | 89 | 86 | 83 | 82 | 77 | 78 | 86 | 32.4% |
| | NGBRI - US | 10 | 10 | 10 | 10 | 9 | 9 | 10 | 11 | 12 | 12 | 13 | 13 | 11 | 4.1% |
| NGBRI - VI | 1 | 1 | 1 | 1 | 1 | 1 | 1 | 1 | 1 | 1 | 1 | 1 | 1 | 0.4% | |
| Dual Commitment | 1 | 2 | 2 | 2 | 2 | 2 | 2 | 2 | 2 | 2 | 2 | 2 | 2 | 0.7% | |
| Sexual Psychopath (Miller Act) | 2 | 2 | 2 | 2 | 2 | 2 | 2 | 2 | 2 | 2 | 2 | 2 | 2 | 0.8% | |
| Forensic Post-trial Sub-total | 103 | 105 | 106 | 102 | 103 | 102 | 104 | 102 | 100 | 99 | 95 | 96 | 101 | 38.4% | |
| Length of Stay | Median LOS (Days) | 1068 d | 830 d | 1033 d | 1179 d | 1190 d | 1157 d | 857 d | 1003 d | 938 d | 646 d | 568 d | 628 d | 925 d | |
| | Average LOS (Days) | 3093 d | 2973 d | 3065 d | 3294 d | 3217 d | 3207 d | 2963 d | 3108 d | 3097 d | 2956 d | 2885 d | 2950 d | 3067 d | |
| | <30 Days | 33 | 41 | 30 | 23 | 32 | 33 | 42 | 25 | 25 | 30 | 35 | 29 | 32 | 11.9% |
| | >=30 ~ <365 Days | 74 | 80 | 82 | 70 | 62 | 65 | 78 | 83 | 80 | 85 | 89 | 87 | 78 | 29.5% |
| | >= 1 Year & < 2 Years | 15 | 13 | 14 | 15 | 14 | 14 | 13 | 14 | 18 | 19 | 19 | 23 | 16 | 6.0% |
| | >= 2 Years & < 5 Years | 42 | 42 | 43 | 42 | 44 | 39 | 39 | 37 | 33 | 34 | 32 | 31 | 38 | 14.4% |
| | >= 5 Years & < 20 Years | 59 | 59 | 59 | 57 | 57 | 56 | 56 | 57 | 56 | 53 | 53 | 53 | 56 | 21.3% |
| >= 20 Years | 44 | 44 | 44 | 44 | 44 | 46 | 45 | 45 | 44 | 45 | 45 | 45 | 45 | 16.9% | |

* Counts the total number of individuals who are on the hospital roll at end of each month. This number serves as denominator to calculate percentage of each group.

Performance Related Information for Staff & Managers

5. Major Incidents by Incident Location/Unit

Data Source: UI DB

Updated as of 03/13/14

| Category | | Mar-13 | Apr-13 | May-13 | Jun-13 | Jul-13 | Aug-13 | Sep-13 | Oct-13 | Nov-13 | Dec-13 | Jan-14 | Feb-14 | Monthly Average | Total (12mths) | Percent |
|--------------------------------|---|------------|------------|------------|------------|------------|------------|------------|------------|------------|------------|------------|------------|-----------------|----------------|-------------|
| Total Unusual Incidents | | 206 | 214 | 258 | 155 | 154 | 120 | 156 | 191 | 207 | 189 | 220 | 181 | 188 | 2251 | |
| Total Major Incidents* | | 101 | 115 | 175 | 87 | 94 | 71 | 111 | 126 | 128 | 118 | 136 | 123 | 115 | 1385 | 100% |
| Major Incident Location | 1A | 9 | 5 | 11 | 4 | 10 | 12 | 10 | 7 | 4 | 6 | 3 | 5 | 7 | 86 | 6% |
| | 1B | 6 | 10 | 22 | 9 | 9 | 6 | 8 | 13 | 7 | 8 | 8 | 13 | 10 | 119 | 9% |
| | 1C | 8 | 13 | 8 | 4 | 11 | 4 | 10 | 12 | 13 | 9 | 9 | 6 | 9 | 107 | 8% |
| | 1D | 14 | 16 | 13 | 5 | 7 | 5 | 9 | 9 | 8 | 8 | 19 | 14 | 11 | 127 | 9% |
| | 1E | 20 | 32 | 30 | 12 | 8 | 3 | 19 | 5 | 14 | 7 | 20 | 7 | 15 | 177 | 13% |
| | 1F | 12 | 8 | 33 | 19 | 7 | 12 | 16 | 21 | 20 | 23 | 25 | 22 | 18 | 218 | 16% |
| | 1G | 1 | 5 | 8 | 10 | 13 | 4 | 3 | 12 | 9 | 27 | 19 | 10 | 10 | 121 | 9% |
| | 2A | 1 | 0 | 3 | 2 | 2 | 1 | 2 | 5 | 3 | 1 | 1 | 3 | 2 | 24 | 2% |
| | 2B | 1 | 4 | 1 | 3 | 1 | 0 | 3 | 2 | 2 | 3 | 1 | 1 | 2 | 22 | 2% |
| | 2C | 5 | 3 | 9 | 1 | 4 | 4 | 6 | 7 | 10 | 6 | 8 | 9 | 6 | 72 | 5% |
| | 2D | 2 | 7 | 14 | 10 | 6 | 1 | 6 | 14 | 15 | 7 | 8 | 11 | 8 | 101 | 7% |
| | TLC | 14 | 7 | 18 | 7 | 9 | 13 | 12 | 11 | 14 | 8 | 6 | 8 | 11 | 127 | 9% |
| | Other | 8 | 5 | 5 | 1 | 7 | 6 | 7 | 8 | 9 | 5 | 9 | 14 | 7 | 84 | 6% |
| | Total Physical Assault Incidents | | 32 | 35 | 72 | 26 | 37 | 33 | 30 | 42 | 43 | 46 | 54 | 40 | 41 | 490 |
| Assault Incident Location | 1A | 2 | 2 | 3 | 0 | 2 | 6 | 1 | 3 | 1 | 2 | 2 | 1 | 2 | 25 | 5% |
| | 1B | 0 | 2 | 7 | 0 | 0 | 1 | 0 | 2 | 1 | 0 | 0 | 4 | 1 | 17 | 3% |
| | 1C | 1 | 5 | 5 | 0 | 5 | 3 | 3 | 4 | 4 | 3 | 3 | 1 | 3 | 37 | 8% |
| | 1D | 9 | 7 | 6 | 2 | 6 | 4 | 4 | 5 | 4 | 3 | 5 | 7 | 5 | 62 | 13% |
| | 1E | 8 | 4 | 8 | 3 | 4 | 2 | 6 | 2 | 6 | 4 | 12 | 0 | 5 | 59 | 12% |
| | 1F | 3 | 1 | 16 | 1 | 3 | 4 | 6 | 3 | 3 | 8 | 7 | 5 | 5 | 60 | 12% |
| | 1G | 1 | 1 | 2 | 6 | 7 | 1 | 1 | 5 | 8 | 16 | 10 | 8 | 6 | 66 | 13% |
| | 2A | 0 | 0 | 0 | 0 | 0 | 0 | 0 | 0 | 0 | 0 | 0 | 0 | 0 | 0 | 0% |
| | 2B | 0 | 1 | 0 | 0 | 1 | 0 | 0 | 0 | 0 | 0 | 0 | 0 | 0 | 2 | 0% |
| | 2C | 1 | 1 | 4 | 2 | 1 | 3 | 0 | 3 | 3 | 3 | 4 | 5 | 3 | 30 | 6% |
| | 2D | 1 | 6 | 9 | 8 | 2 | 0 | 2 | 8 | 8 | 4 | 6 | 4 | 5 | 58 | 12% |
| | TLC | 6 | 4 | 11 | 4 | 6 | 8 | 6 | 6 | 5 | 2 | 4 | 5 | 6 | 67 | 14% |
| | Other | 0 | 1 | 1 | 0 | 0 | 1 | 1 | 1 | 0 | 1 | 1 | 0 | 1 | 7 | 1% |

Performance Related Information for Staff & Managers

5. Major Incidents by Incident Location/Unit

Data Source: UI DB

Updated as of 03/13/14

| Category | | Mar-13 | Apr-13 | May-13 | Jun-13 | Jul-13 | Aug-13 | Sep-13 | Oct-13 | Nov-13 | Dec-13 | Jan-14 | Feb-14 | Monthly Average | Total (12mths) | Percent |
|-------------------------------|-------|-----------|-----------|-----------|-----------|-----------|-----------|-----------|-----------|-----------|-----------|-----------|-----------|-----------------|----------------|-------------|
| Total Fall Incidents | | 16 | 16 | 34 | 17 | 15 | 11 | 27 | 19 | 17 | 16 | 18 | 24 | 19 | 230 | 100% |
| Fall Incident Location | 1A | 3 | 1 | 8 | 3 | 2 | 4 | 3 | 2 | 1 | 3 | 2 | 3 | 3 | 35 | 15% |
| | 1B | 4 | 2 | 6 | 5 | 4 | 2 | 3 | 4 | 1 | 2 | 1 | 3 | 3 | 37 | 16% |
| | 1C | 0 | 1 | 1 | 1 | 3 | 0 | 3 | 2 | 1 | 1 | 4 | 2 | 2 | 19 | 8% |
| | 1D | 1 | 3 | 0 | 0 | 0 | 1 | 3 | 2 | 3 | 1 | 1 | 2 | 1 | 17 | 7% |
| | 1E | 2 | 1 | 1 | 0 | 1 | 0 | 4 | 1 | 2 | 1 | 3 | 1 | 1 | 17 | 7% |
| | 1F | 0 | 0 | 1 | 1 | 0 | 1 | 1 | 0 | 0 | 1 | 3 | 1 | 1 | 9 | 4% |
| | 1G | 0 | 2 | 0 | 1 | 0 | 0 | 0 | 0 | 1 | 2 | 0 | 0 | 1 | 6 | 3% |
| | 2A | 0 | 0 | 1 | 2 | 0 | 0 | 1 | 2 | 0 | 0 | 0 | 1 | 1 | 7 | 3% |
| | 2B | 0 | 1 | 1 | 1 | 0 | 0 | 2 | 1 | 2 | 3 | 0 | 1 | 1 | 12 | 5% |
| | 2C | 0 | 0 | 2 | 0 | 2 | 0 | 1 | 0 | 0 | 0 | 0 | 1 | 1 | 6 | 3% |
| | 2D | 0 | 0 | 5 | 2 | 0 | 1 | 2 | 1 | 2 | 0 | 1 | 2 | 1 | 16 | 7% |
| | TLC | 5 | 3 | 7 | 1 | 0 | 0 | 3 | 3 | 3 | 2 | 0 | 0 | 2 | 27 | 12% |
| | Other | 1 | 2 | 1 | 0 | 3 | 2 | 1 | 1 | 1 | 1 | 0 | 3 | 7 | 22 | 10% |
| Total Injury Incidents | | 20 | 22 | 47 | 18 | 22 | 16 | 31 | 23 | 41 | 37 | 42 | 27 | 29 | 346 | 100% |
| Injury Incident Location | 1A | 1 | 1 | 1 | 1 | 4 | 4 | 2 | 1 | 2 | 1 | 0 | 1 | 2 | 19 | 5% |
| | 1B | 2 | 2 | 6 | 2 | 1 | 1 | 3 | 0 | 2 | 0 | 1 | 2 | 2 | 22 | 6% |
| | 1C | 0 | 1 | 2 | 1 | 3 | 0 | 2 | 1 | 2 | 3 | 3 | 1 | 2 | 19 | 5% |
| | 1D | 6 | 4 | 4 | 1 | 4 | 3 | 6 | 4 | 5 | 4 | 8 | 6 | 5 | 55 | 16% |
| | 1E | 4 | 4 | 4 | 3 | 0 | 1 | 4 | 2 | 6 | 2 | 7 | 1 | 3 | 38 | 11% |
| | 1F | 1 | 1 | 9 | 2 | 2 | 3 | 4 | 1 | 2 | 10 | 9 | 4 | 4 | 48 | 14% |
| | 1G | 1 | 2 | 2 | 2 | 2 | 1 | 1 | 5 | 4 | 11 | 3 | 4 | 3 | 38 | 11% |
| | 2A | 0 | 0 | 2 | 0 | 0 | 0 | 1 | 1 | 1 | 1 | 0 | 0 | 0 | 5 | 1% |
| | 2B | 0 | 1 | 0 | 1 | 0 | 0 | 1 | 1 | 1 | 1 | 1 | 0 | 1 | 7 | 2% |
| | 2C | 1 | 0 | 3 | 0 | 2 | 1 | 1 | 1 | 3 | 1 | 4 | 1 | 2 | 18 | 5% |
| | 2D | 0 | 1 | 8 | 2 | 1 | 0 | 2 | 2 | 4 | 3 | 3 | 3 | 2 | 29 | 8% |
| | TLC | 3 | 2 | 4 | 3 | 2 | 2 | 3 | 2 | 6 | 1 | 1 | 1 | 3 | 30 | 9% |
| | Other | 1 | 3 | 2 | 0 | 1 | 0 | 1 | 2 | 3 | 3 | 0 | 3 | 2 | 18 | 5% |

* Not every incident is a major incident. This counts only those incidents that were classified to be major based on the policy.