



Government of the District of Columbia
Department of Behavioral Health (DBH)



PRISM

Performance Related Information for Staff and Managers



DECEMBER 2015

Office of Statistics and Reporting (OSR), 01/25/16

Table of Contents

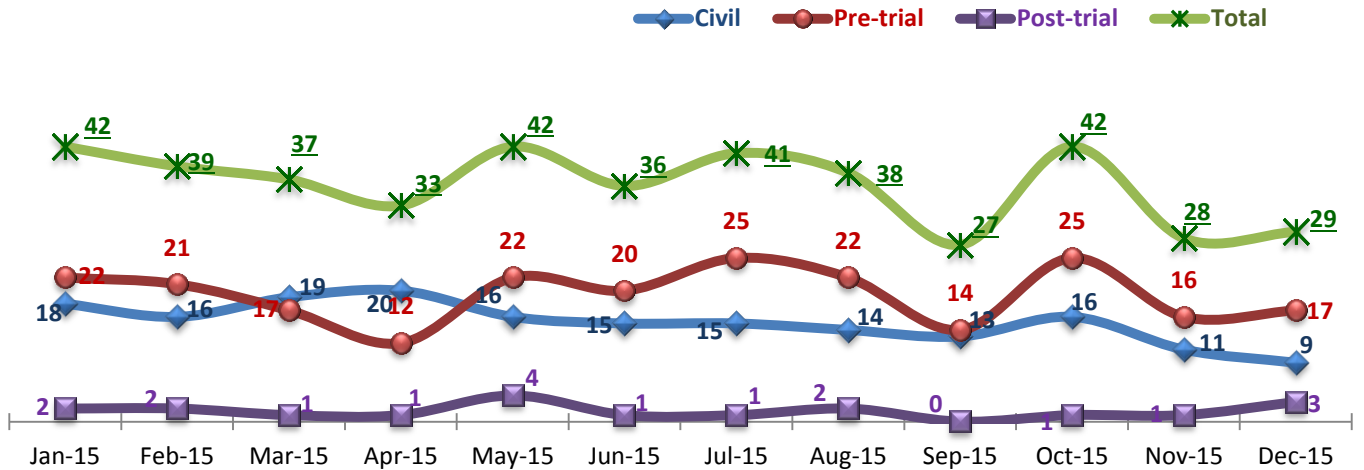
1. Admissions to SEH	1
2. Discharges from SEH	1
3. Average Daily Census.....	2
4. Transfers.....	2
5. 30-Day Readmission Rate	2
6. Unusual Incidents	3
7. Patient-Involved Unusual Incidents	3
8. Admissions vs. Patient UI Rate	4
9. Unusual Incidents by Severity.....	4
10. Selected Types of Incidents	4
11. Physical Assaults by Severity	5
12. Patient Injuries	5
13. Staff Injuries	5
14. Patient and Staff Falls.....	6
15. Percent of Patients Restrained or Secluded	6
16. Restraint Hours Rate & Seclusion Hours Rate	6
17. Elopements.....	7
18. Reported Medication Variance Events.....	7
19. Reported Adverse Drug Reactions	8
20. Percent of Missing Documentation on Med-Administration.....	8
21. Medication Refusal Rate*.....	8
22. Number of STAT Events and Individuals Involved	9
23. Percentage of SiteFM Work Orders Completed within 3 Days	9
24. Demographics.....	10
25. Length of Stay.....	11

- Appendix 1) Table – Census, Admissions & Discharges
- Appendix 2) Table – Key Performance Indicators
- Appendix 3) Table – Unusual Incident & Medication
- Appendix 4) Table – Restraint & Seclusion
- Appendix 5) Table – Unusual Incidents by Unit
- Appendix 6) Table – Demographic Information of Individuals in Care

Key Trends: Admission, Discharge, Transfer, Census, and Readmissions (1~6)

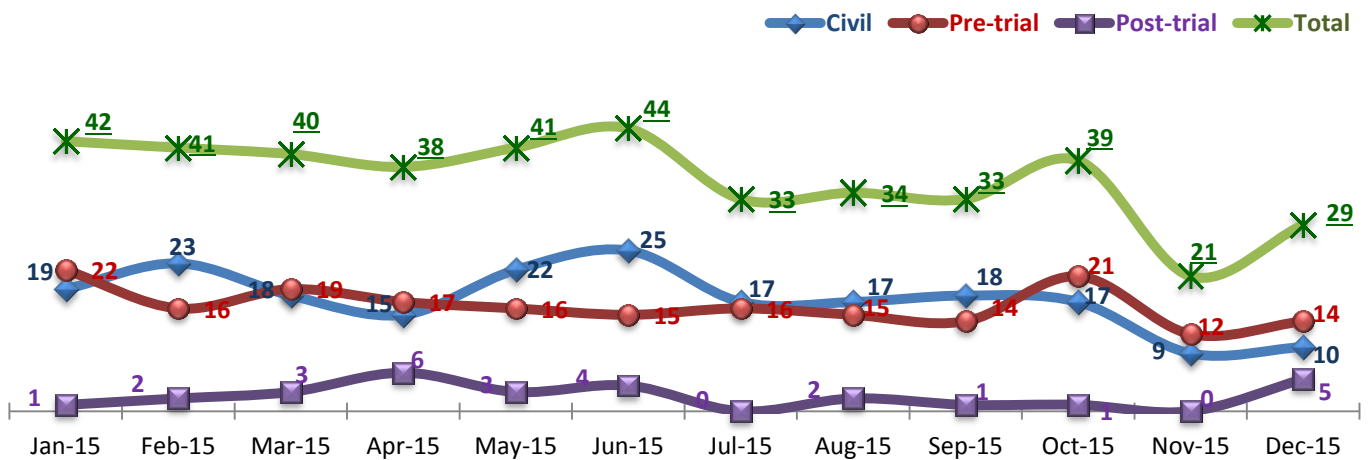
- The number of **admissions** during the **first quarter of FY16**, particularly in November and December, **declined** to below 30. (The average number of admissions in FY15 was 38 per month.) This recent decline of admissions is attributed more to the **unavailability of bed space for new admissions** than a reduction in the number of those in need of admissions.
- The number of **discharges** began to **decrease** noticeably since **July 2015**, resulting in an **increased census** in the last six (6) months. In particular, the number of civil discharges reached a significant low (9) in November 2015 and was only slightly better (10) in December 2015. The decline of discharges triggered a continued increase of the average daily census (ADC) during this time period, and the ADC reached 280 in November 2015. The **continued high census** from the lower turnover in beds at the Hospital **affected admissions**: it created a long **waiting list for admissions** and increased the time individuals spend on the waiting list because the Hospital did not have available beds for them. Accordingly, the number of admissions declined.
- The 30-day readmission rate has remained just below the national average (NPR at 6.9%)¹ since May 2015, but all of the **readmissions in the past 7 months** are those who were discharged with a **civil** legal status.

1. Admissions to SEH



* Number of admissions to SEH inpatient program, including transfers from forensic outpatient to inpatient program.

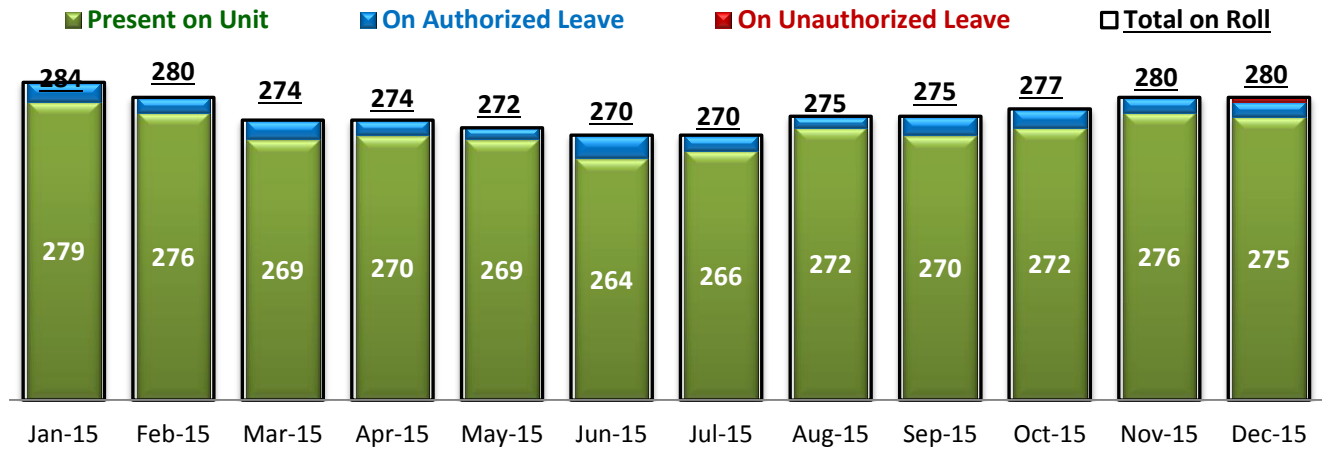
2. Discharges from SEH



* Number of discharges from SEH inpatient program, including transfers from inpatient to forensic outpatient program.

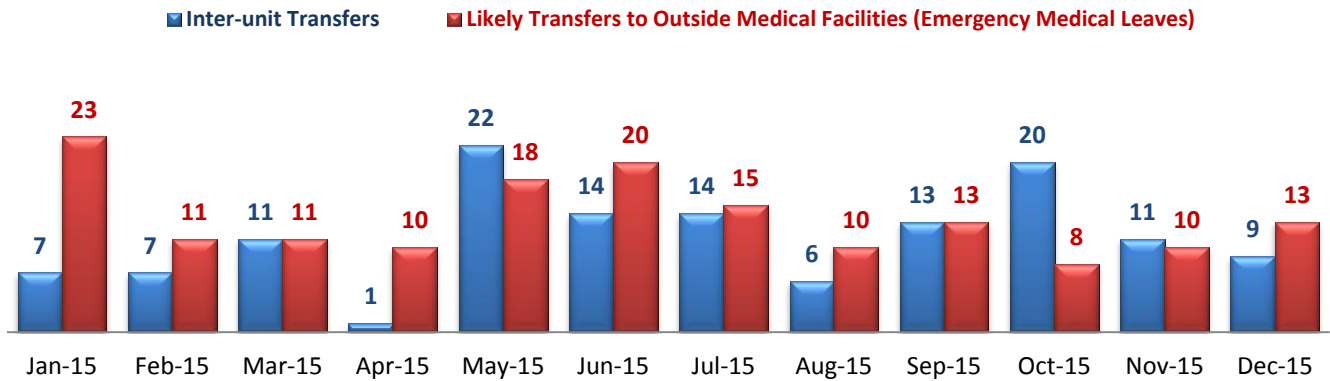
¹ NPR: National Public Rate as of June 2013 was published in November 2013 by National Association of State Mental Health Program Directors Research Institute (NRI), based on data collected from a number of state psychiatric hospitals nationwide.

3. Average Daily Census



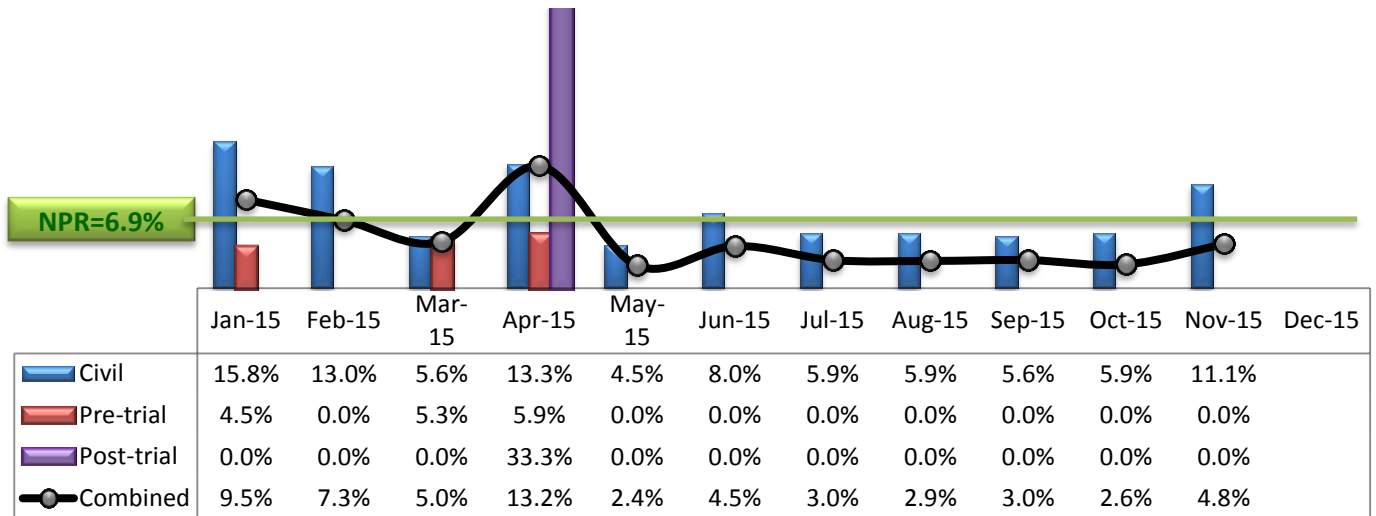
* Data above is the daily average number of individuals counted at 11:59 PM every day during each month.

4. Transfers



* Number of inter-unit transfers that occurred during month and number of emergency medical leaves that were initiated during month.

5. 30-Day Readmission Rate



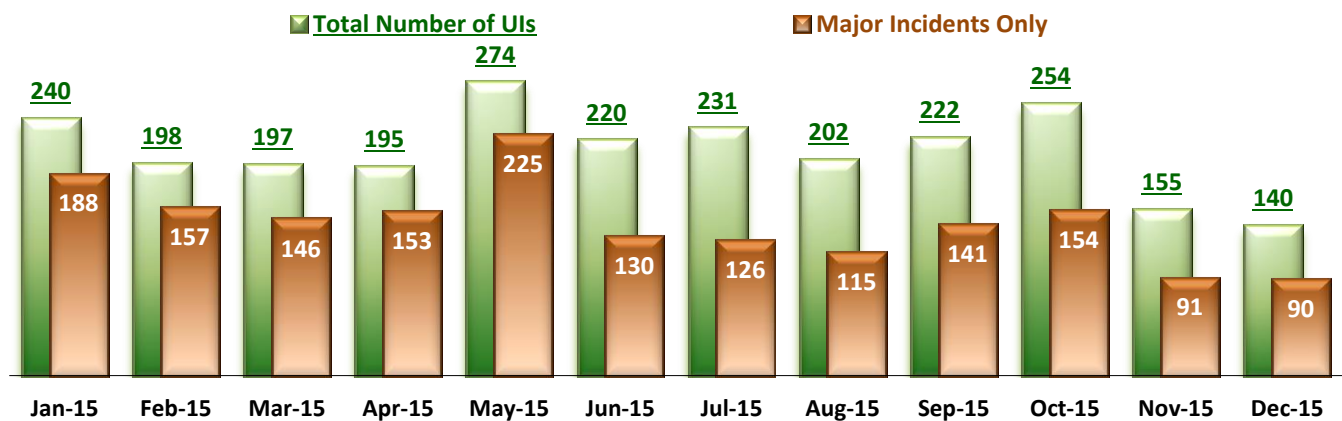
* Percent of discharges that returned to SEH within 30 days of discharges. It does not include those who may have been re-hospitalized at another psychiatric facility. This measure requires 30-day observation following discharge.

** The post-trial denominators (discharges) per month range only between one and six, making the monthly re-admission rate high when there is any. For example, in December 2014, there was only one post-trial discharge, which was readmitted within 30 days. Thus, the 30-day readmission rate for post-trial discharge for this month is 100%.

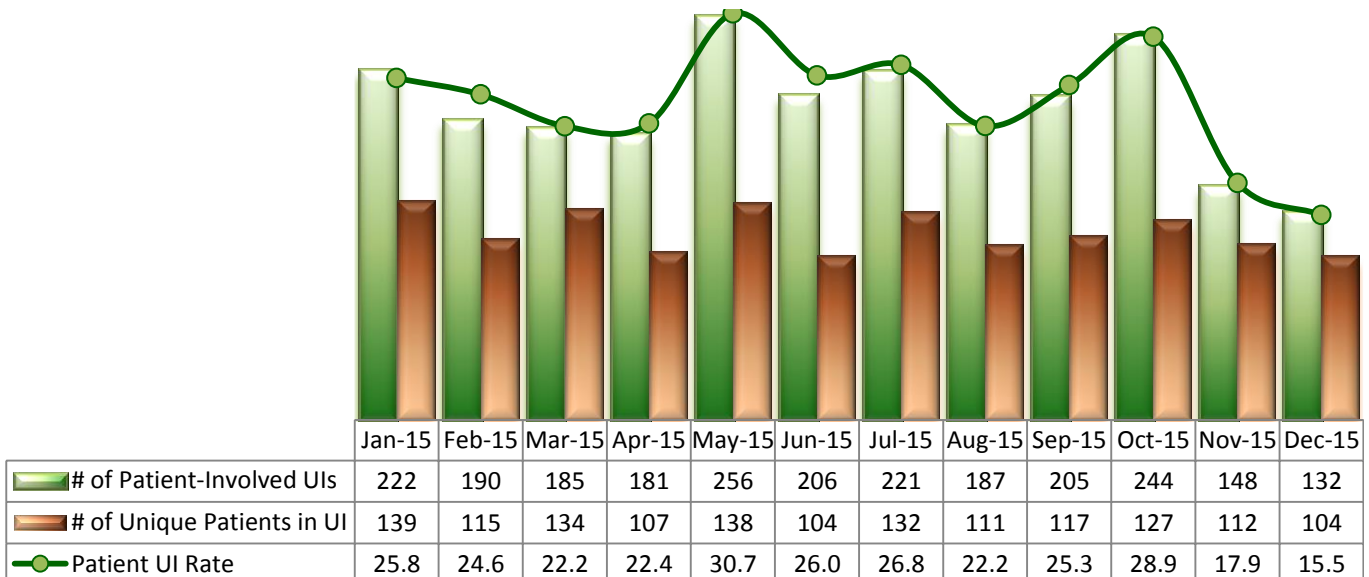
Key Trends: Unusual Incidents (6~17)

- The trend in the number of unusual incidents (UIs), particularly violence related incidents, tends to mirror the trend in the number of admissions as individuals in early stage of hospitalization are more likely to get agitated and be involved in unusual incidents than those who have been in care for a longer period of time. A noticeable decrease in the number of admissions in November and December 2015 contributed to a **significant decrease in the number of UIs and the patient UI rate: in December 2015**, the number of UIs (140) and the patient UI rate (15.5 per 1000 patient days) dropped to its lowest level since August 2013.
- In December 2015, the number of **violence related incidents declined in all areas**, including aggressive behaviors and physical assaults, particularly **high or medium severity assaults**. Accordingly, the frequency of **psychiatric emergencies (7)** decreased considerably, reaching its lowest level since September 2012.
- Both the **patient injuries and staff injuries declined** in December 2015.
- The use of **restraint and seclusion both declined** in December 2015 as did the percentage of unique individuals restrained or secluded. The restraint & seclusion hours rates (0.005 and 0.05 per 1000 patient hours, respectively) continued to be far below the national average (0.71 and 0.44, respectively).
- The **patient fall rate** in December 2015 (2.34 per 1000 patient days) **decreased significantly**, far below the average patient fall rate of FY15 (3.2).
- There were no elopements between August and November 2015 but one occurred in December 2015.

6. Unusual Incidents

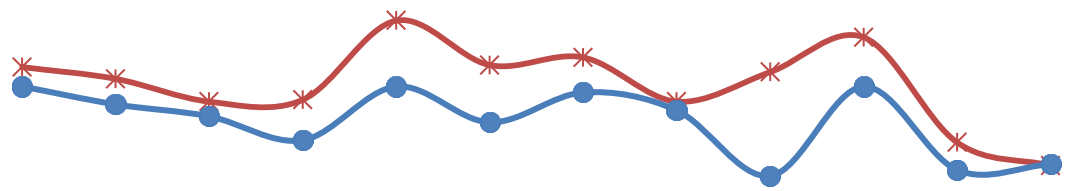


7. Patient-Involved Unusual Incidents



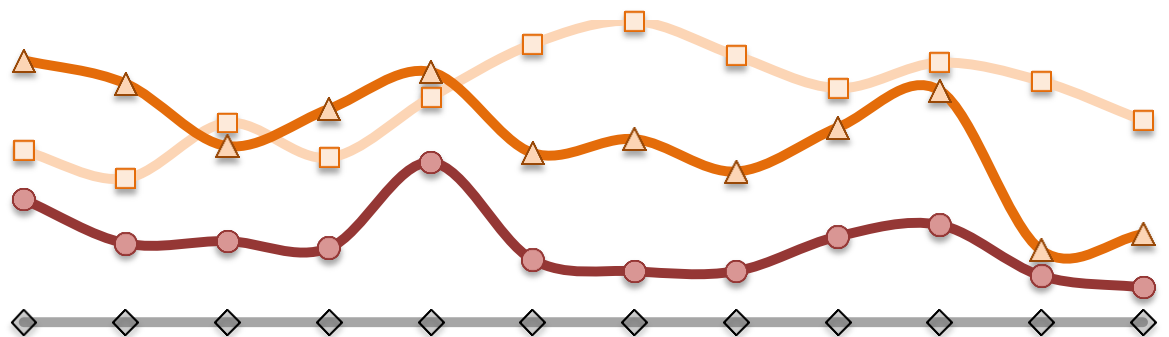
* The patient UI rate is the number of patient-involved unusual incidents reported for every 1000 inpatient days.

8. Admissions vs. Patient UI Rate



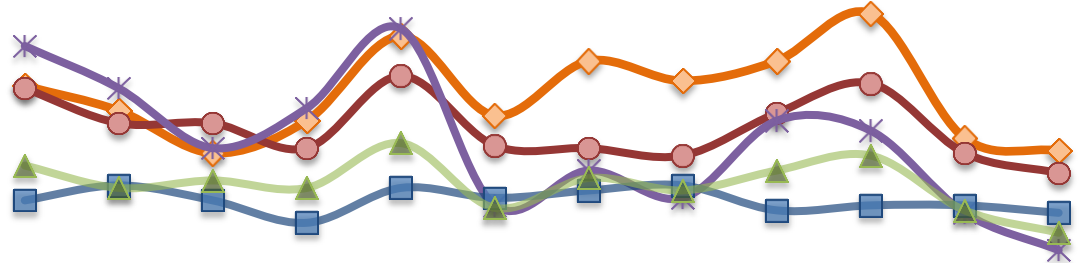
	Jan-15	Feb-15	Mar-15	Apr-15	May-15	Jun-15	Jul-15	Aug-15	Sep-15	Oct-15	Nov-15	Dec-15
—*— Patient UI Rate	25.8	24.6	22.2	22.4	30.7	26.0	26.8	22.2	25.3	28.9	17.9	15.5
—●— Admission	42	39	37	33	42	36	41	38	27	42	28	29

9. Unusual Incidents by Severity



	Jan-15	Feb-15	Mar-15	Apr-15	May-15	Jun-15	Jul-15	Aug-15	Sep-15	Oct-15	Nov-15	Dec-15
□ 1) Low	74	62	86	71	97	120	130	115	101	112	104	87
△ 2) Medium	113	103	76	92	108	73	79	65	84	100	31	38
● 3) High	53	34	35	32	69	27	22	22	37	42	20	15
◇ 4) Catstrp	0	0	0	0	0	0	0	0	0	0	0	0
Total UI	240	198	197	195	274	220	231	202	222	254	155	140

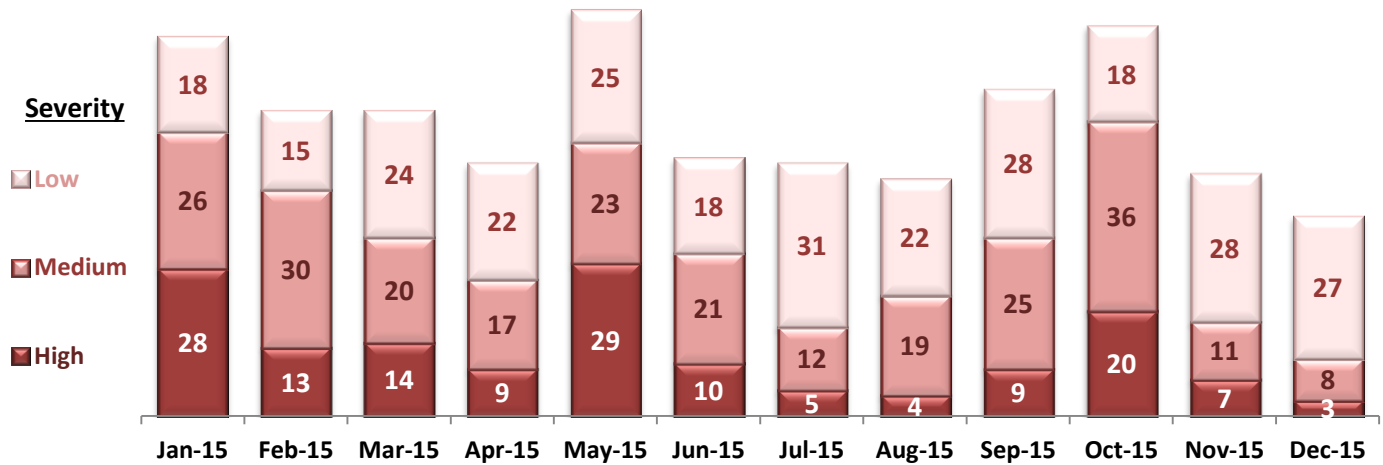
10. Selected Types of Incidents



	Jan-15	Feb-15	Mar-15	Apr-15	May-15	Jun-15	Jul-15	Aug-15	Sep-15	Oct-15	Nov-15	Dec-15
◇ Aggressive Behavior	73	63	46	59	93	61	83	75	83	102	52	47
● Physical Assault	72	58	58	48	77	49	48	45	62	74	46	38
* Pysch Emerg.	89	72	48	64	96	25	39	28	59	55	22	7
■ Fall	27	33	27	18	32	28	31	33	23	25	25	22
▲ Injury	41	32	35	32	50	24	36	31	39	45	23	14

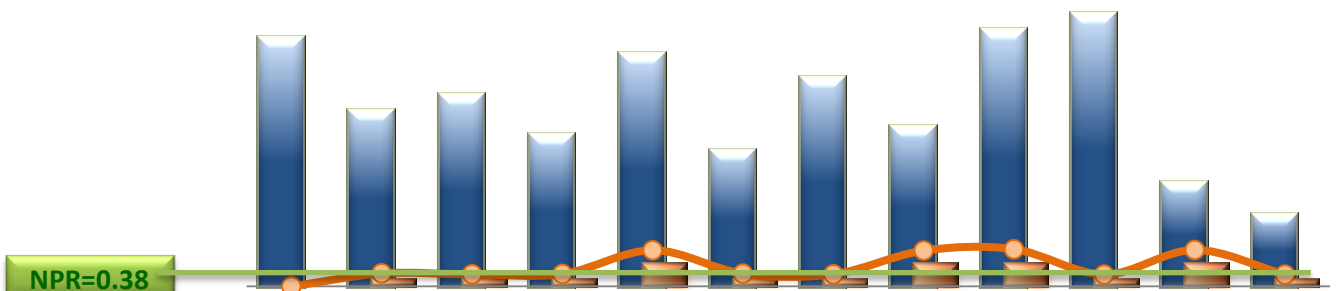
* These are incident types that are frequently reported. Some incidents may be counted in multiple categories. For example, a physical assault incident that accompanied psychiatric emergency and injury is counted under psychiatric emergency and injury as well as under physical assault. Injury is broadly defined to include any type of injuries regardless of the cause or severity level.

11. Physical Assaults by Severity



* Any physical assault that accompanies a code 13 or results in extensive injury needing off-unit treatment or transfer to ER is considered to be high severity; any physical assault that causes a minor injury that can be treated on unit is considered to be medium severity; and physical assault events that result in no injury are considered to be low severity.

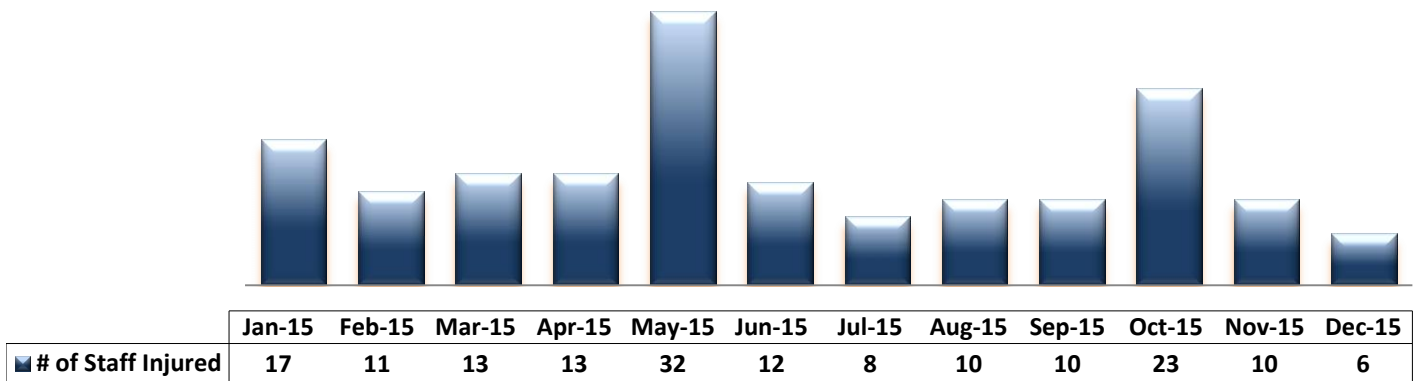
12. Patient Injuries



	Jan-15	Feb-15	Mar-15	Apr-15	May-15	Jun-15	Jul-15	Aug-15	Sep-15	Oct-15	Nov-15	Dec-15
Total Pts Injured	31	22	24	19	29	17	26	20	32	34	13	9
Major Pt Injuries*	0	1	1	1	3	1	1	3	3	1	3	1
Patient Injury Rate	0.00	0.13	0.12	0.12	0.36	0.13	0.12	0.36	0.37	0.12	0.36	0.12

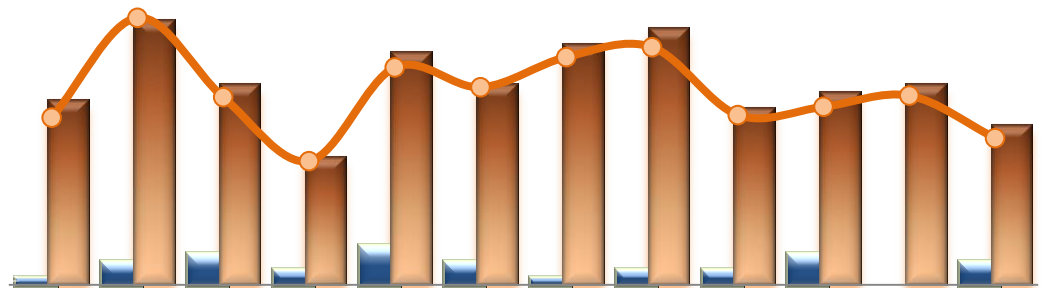
* Injury is broadly defined to include any type of injuries regardless of the cause or severity level. The total number of patients injured represents all of the reported injuries including minor injuries treated with first aid alone. However, the patient injury rate considers only the number of patient injuries that required beyond first-aid level treatment based on the NRI definition and the patient injury rate is the number of 'major' patient injuries per every 1000 inpatient days

13. Staff Injuries



* Injury is broadly defined to include any type of injuries regardless of the cause or severity level. The total number of staff injured represents all of the reported staff injuries including minor injuries treated with first aid alone.

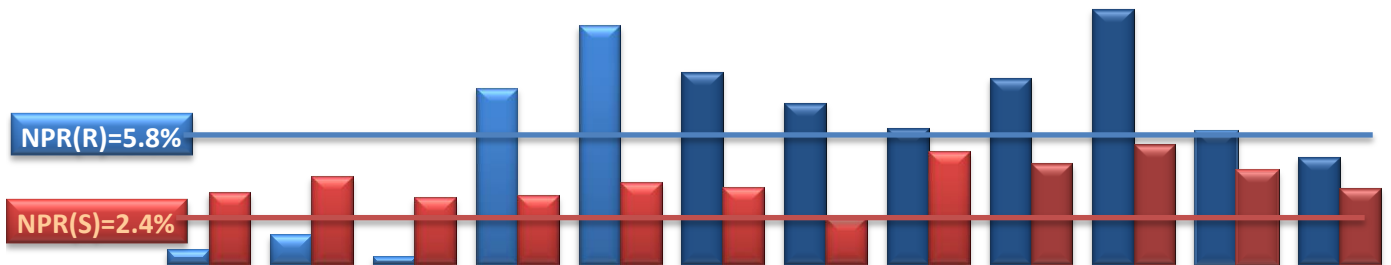
14. Patient and Staff Falls



	Jan-15	Feb-15	Mar-15	Apr-15	May-15	Jun-15	Jul-15	Aug-15	Sep-15	Oct-15	Nov-15	Dec-15
Total Staff who Fell	1	3	4	2	5	3	1	2	2	4	0	3
Total Patients who Fell	23	33	25	16	29	25	30	32	22	24	25	20
Patient Fall Rate	2.67	4.26	2.99	1.98	3.47	3.15	3.64	3.79	2.71	2.84	3.02	2.34

* The patient fall rate is the number of patient falls per every 1000 inpatient days.

15. Percent of Patients Restrained or Secluded



	Jan-15	Feb-15	Mar-15	Apr-15	May-15	Jun-15	Jul-15	Aug-15	Sep-15	Oct-15	Nov-15	Dec-15
Restraint	0.6%	1.3%	0.3%	7.5%	10.2%	8.2%	6.9%	5.8%	7.9%	10.9%	5.6%	4.5%
Seclusion	3.1%	3.8%	2.8%	2.9%	3.5%	3.3%	2.0%	4.8%	4.3%	5.1%	4.0%	3.2%

* Percent of unique patients who were restrained at least once and percent of unique patients who were secluded at least once. The denominator includes all individuals who were served in care >=1 day during month.

** Prior to April 2015, the Hospital tracked only mechanical restraint events, but the Hospital's restraint policy has changed to include any physical holds. The sudden increase of the restraint data as of April 2015 reflects this change.

16. Restraint Hours Rate & Seclusion Hours Rate

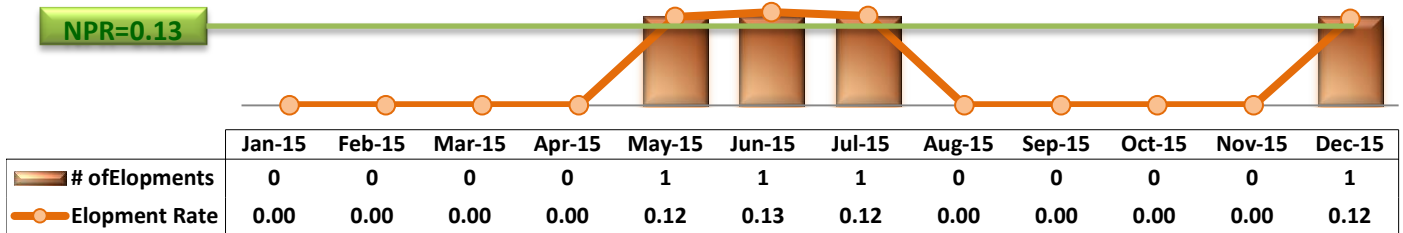


	Jan-15	Feb-15	Mar-15	Apr-15	May-15	Jun-15	Jul-15	Aug-15	Sep-15	Oct-15	Nov-15	Dec-15
Restraint	0.072	0.015	0.004	0.031	0.098	0.074	0.163	0.008	0.031	0.084	0.051	0.005
Seclusion	0.045	0.088	0.101	0.043	0.060	0.150	0.067	0.062	0.260	0.281	0.043	0.046

* Restraint/Seclusion Hours Rate: Number of hours spent in restraint/seclusion for every 1000 inpatient hours.

** The duration of each physical hold event is counted as 1 minute as a physical hold is ordered and used only as a temporary intervention that lasts less than a minute to break up any physical conflicts or to administer emergency medications.

17. Elopements

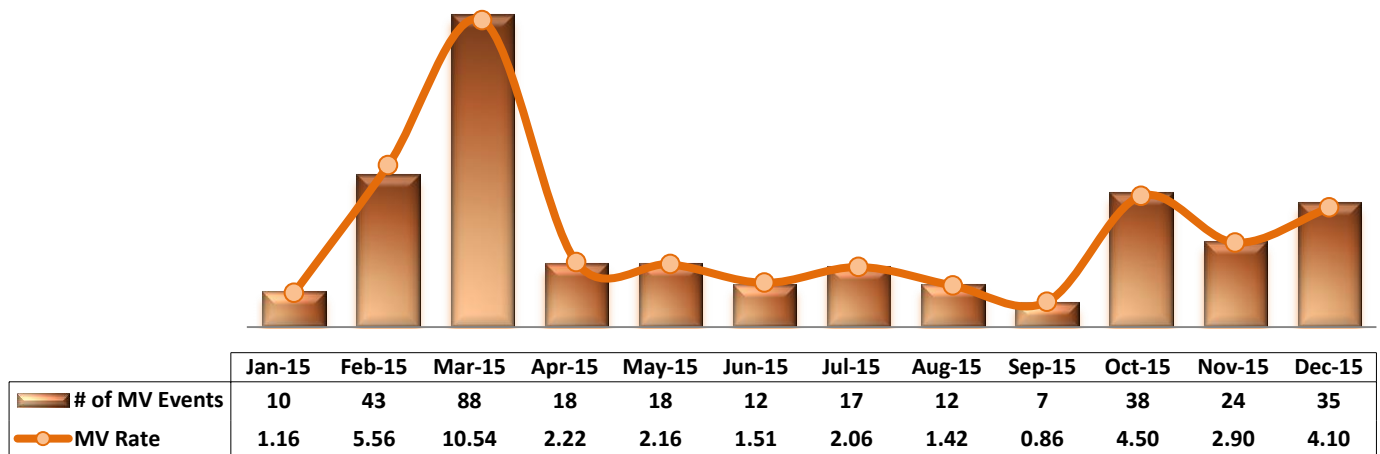


* Data herein counts the number of unauthorized leaves for any duration that were initiated during month and were recorded in Avatar. The elopement rate is the number of those unauthorized leaves that occurred for every 1000 inpatient days.

Key Trends: Medication Documentation, Medication Variance, ADR, and STAT (18~22)

- The number of reported **MVs** ranged between 7 and 18 per month since April 2015 and increased significantly in October (38). It declined to 24 in November but increased again in **December (35)**. The number of reported ADRs ranged between zero (0) and four (4) per month in the past 12 months.
- The **rate of missing documentation** by nursing staff on medication administration in December increased to **0.44%** from the rate in November, but the rate remained below 0.5% for the five (5) consecutive months.
- The **medication refusal rate decreased to 6.4%** in December 2015 from 7.4% in November.
- Despite the fact there were only seven (7) **psychiatric emergencies** in December 2015, the number of **STAT events (ordering emergency medication)** was 66, which is also **higher than the previous month**. However, the number of unique individuals involved in one or more STAT events in December (18) is noticeably lower than that in November (33). There were five (5) individuals who were involved in three or more STAT events during the month of December.

18. Reported Medication Variance Events



* MV Rate: Number of reported medication variance events that occurred for every 1000 inpatient days.

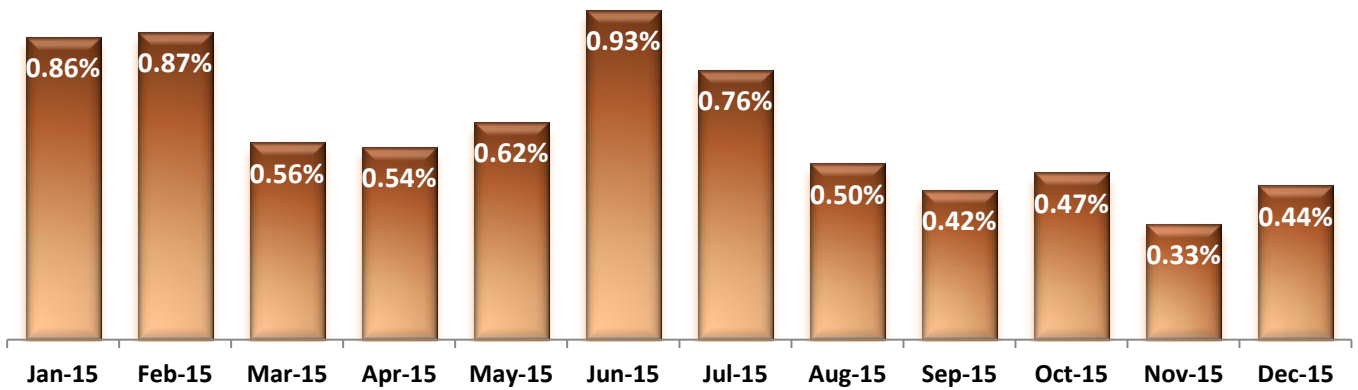
19. Reported Adverse Drug Reactions



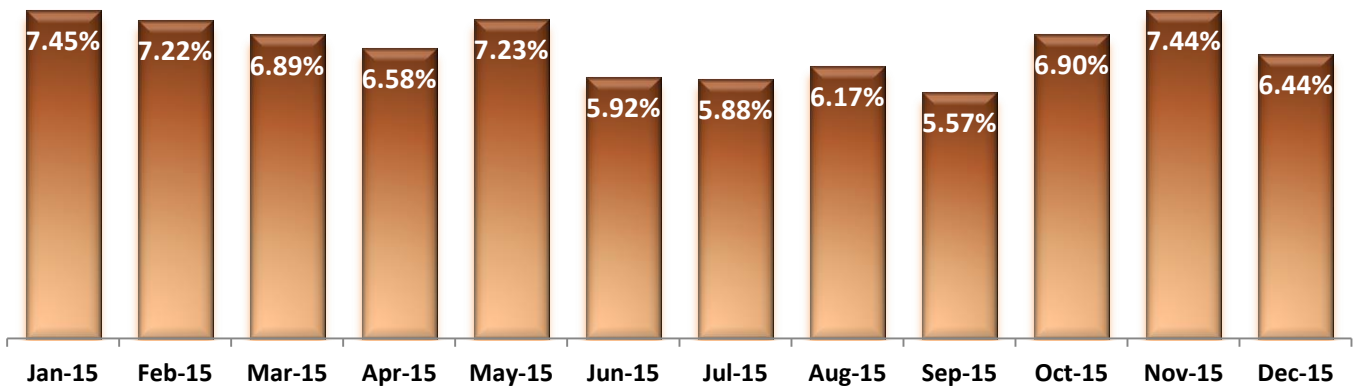
	Jan-15	Feb-15	Mar-15	Apr-15	May-15	Jun-15	Jul-15	Aug-15	Sep-15	Oct-15	Nov-15	Dec-15
# of ADRs	4	1	4	2	3	3	2	3	1	0	3	2
ADR Rate	0.46	0.13	0.48	0.25	0.36	0.38	0.24	0.36	0.12	0.00	0.36	0.23

* ADR Rate: Number of reported adverse drug reaction events that occurred for every 1000 inpatient days.

20. Percent of Missing Documentation on Med-Administration

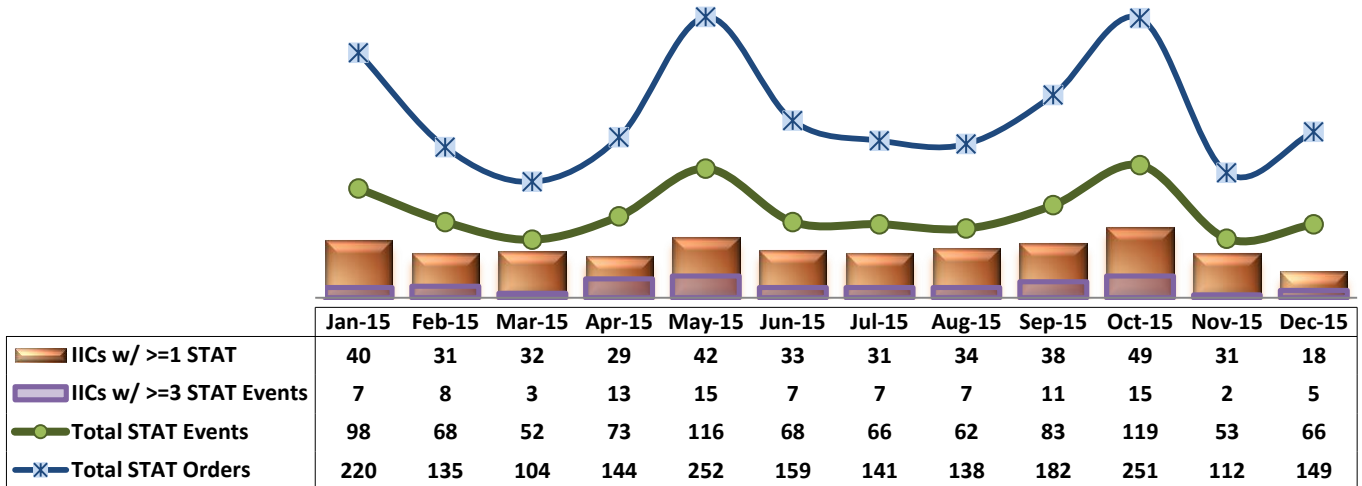


21. Medication Refusal Rate*



* Medication Refusal Rate: the number of refused medication doses divided by the total number of doses scheduled for administration.

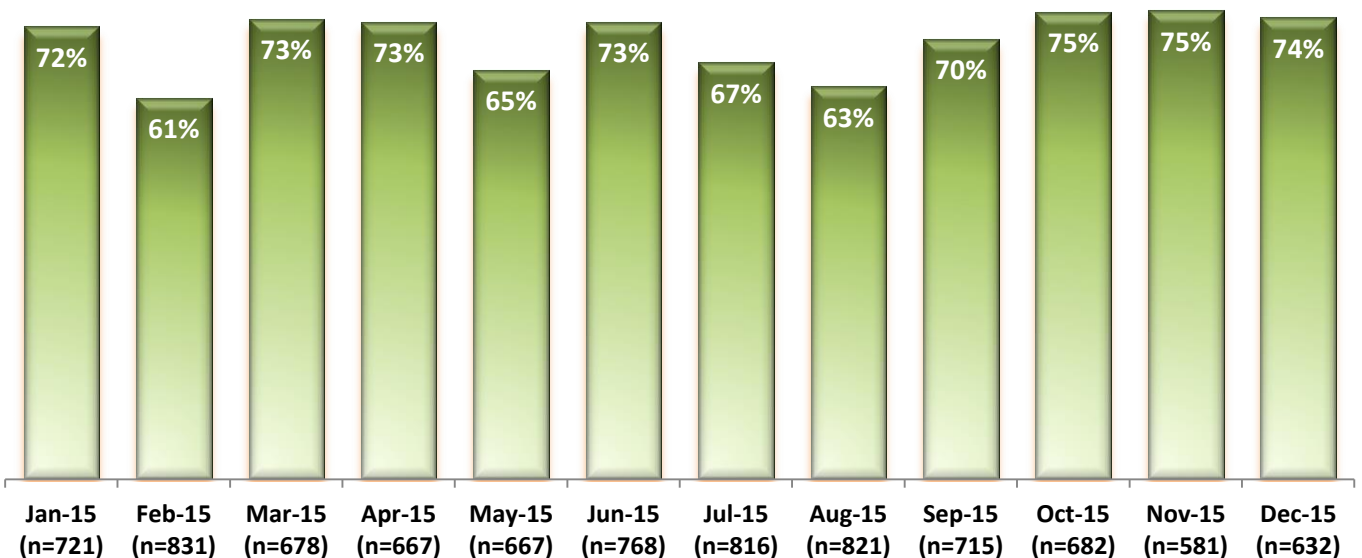
22. Number of STAT Events and Individuals Involved



Key Trends: Environment of Care (23)

- During FY15, on average, the Hospital received a total of 735 work orders per month (or 24 per day) through SiteFM. Of those, 68% were completed within 3 days. The **3 day completion rate** during the first quarter of FY16 is higher than that of FY15, remaining at around 75%.
- In the month December 2015, the Hospital received a total of 632 SiteFM work orders (or 20 per day), which is a slight increase from the previous month, but the average frequency of SiteFM work orders in the first quarter of FY16 is lower than the average in FY15.

23. Percentage of SiteFM Work Orders Completed within 3 Days



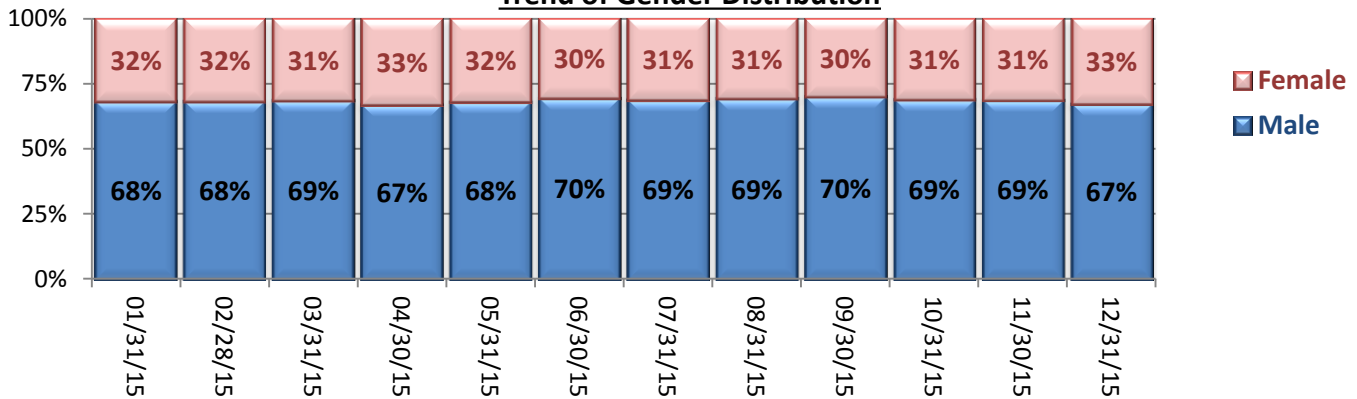
* This data was analyzed and included in PRISM for the first time in December 2014.

Key Trends: Demographics, Legal Status, and Length of Stay (24-25)

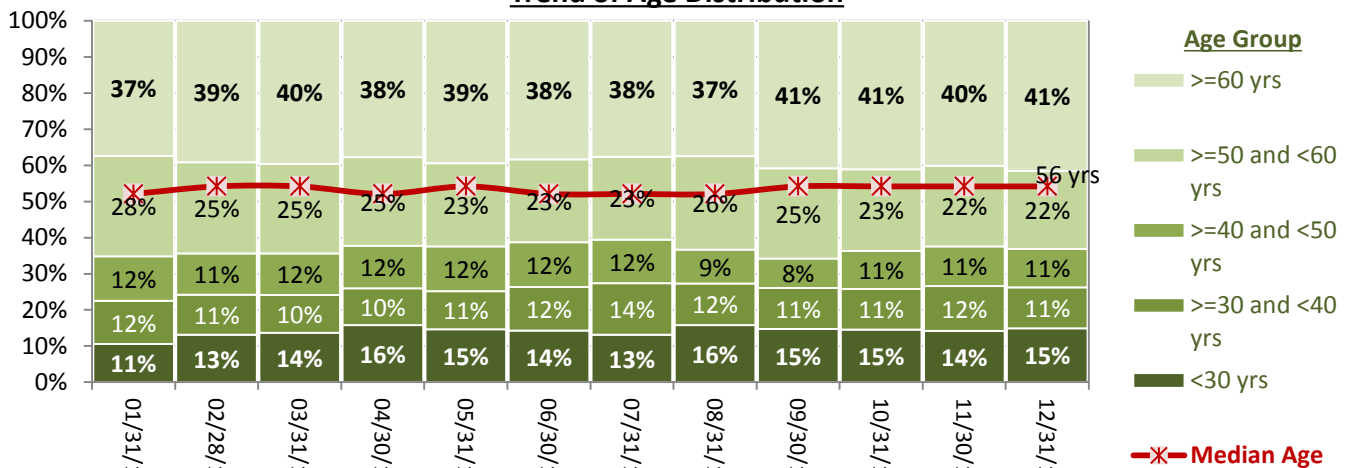
- The proportion of female individuals remaining in the Hospital’s care increased in FY14, from 26% in October 2013 to 33% in September 2014; since then, the percentage of **female individuals remained in the range of 30% to 33%** throughout FY15 and continued to remain in that range in the first quarter of FY16.
- In September 30, 2015, the percentage of individuals aged **60 years or older** remaining in care (41%) reached its highest level since the Hospital reported the trend of age distribution in 2008, and that percentage **continued to remain above 40%**. During this time period, the percentage of **younger population**, particularly those under 30 years, **also noticeably increased**, hovering around 15%. An increase in younger population may be due in part to an increase of pre-trial admissions, which tend to include more younger individuals.
- Overall, the length of stay (both average and median) for individuals in the Hospital’s care significantly shortened in FY14. The average LOS continued to be in declining trend during FY15 and the first quarter of FY16. However, the trend of the **median LOS was reversed in FY15 and through the first quarter of FY16**: it has gradually increased more noticeably in the past six (6) months. This trend is in fact in line with the census and discharge trend presented above: the Hospital successfully discharged several long-term patients in the first half of 2015, affecting a decrease of the ‘average’ LOS. However, overall, the **number and timeliness of discharges decreased in the last six (6) months, triggering an increase of ‘median’ LOS**. The median LOS for those remaining in care as of October 31, 2014 (15 months ago) was 399 days (approximately 13 months), meaning 50% of the individuals in care had been residing at the Hospital for longer than 13 months. Since the median LOS increased throughout the year in FY15 and to date in FY16, it reached its highest point at **484 days (approximately 16 months) on December 31, 2015**.

24. Demographics

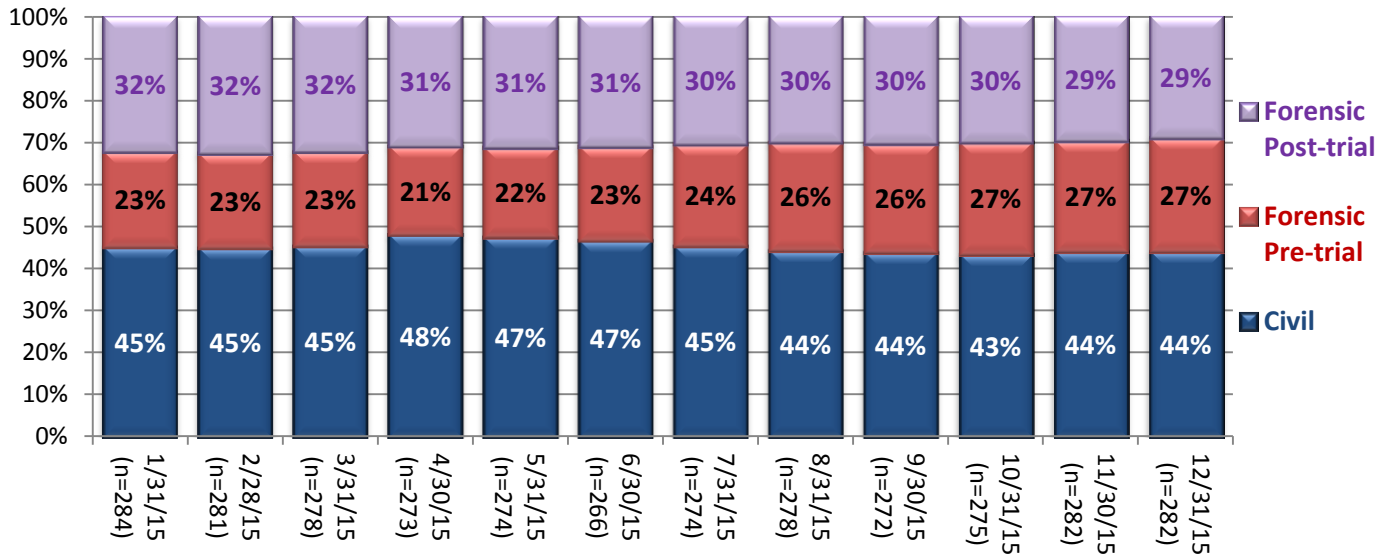
Trend of Gender Distribution



Trend of Age Distribution

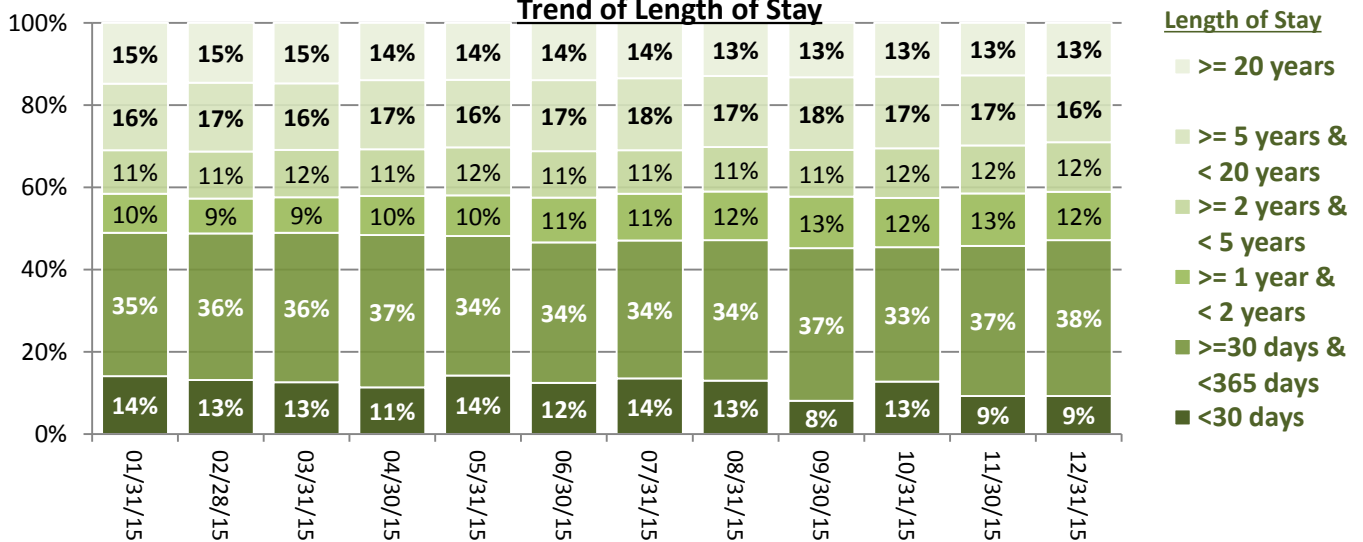


Trend of Legal Status Distribution

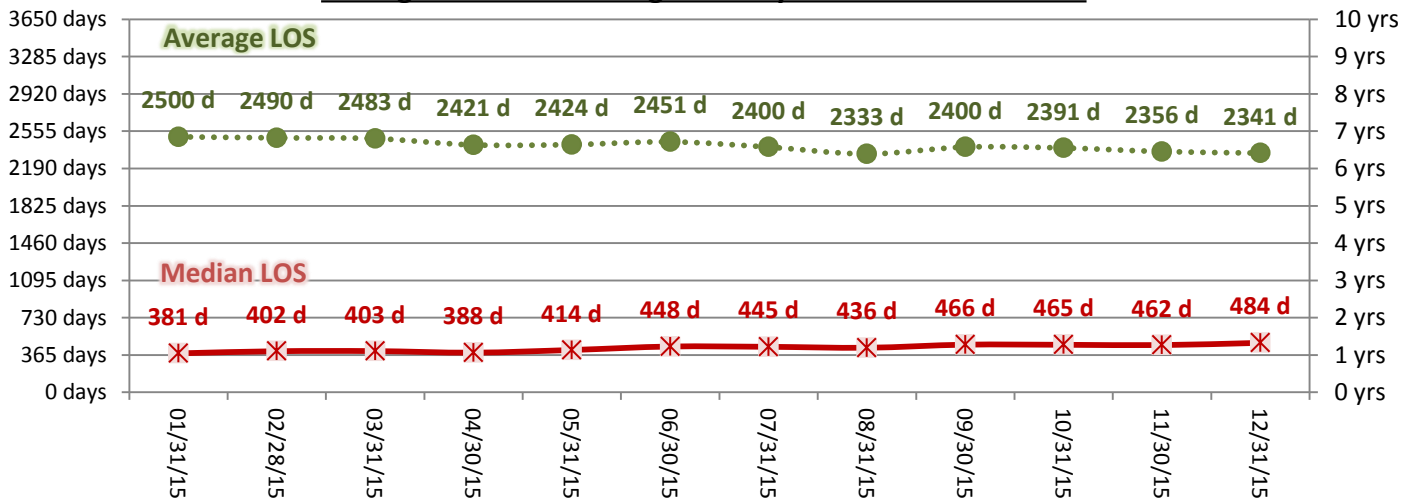


25. Length of Stay

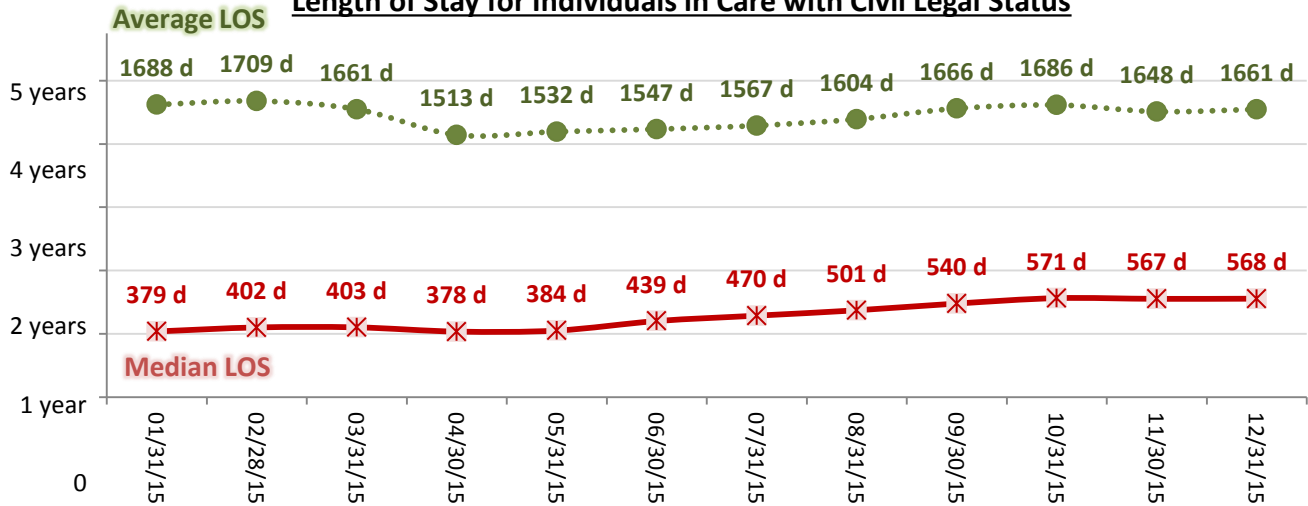
Trend of Length of Stay



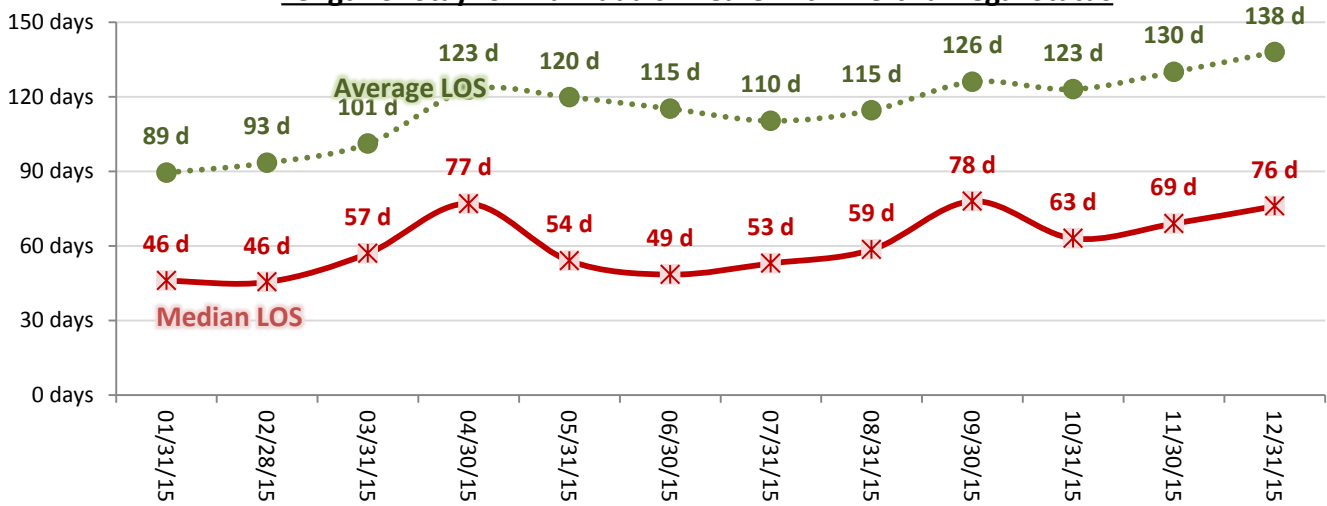
Average and Median Length of Stay for Individuals in Care



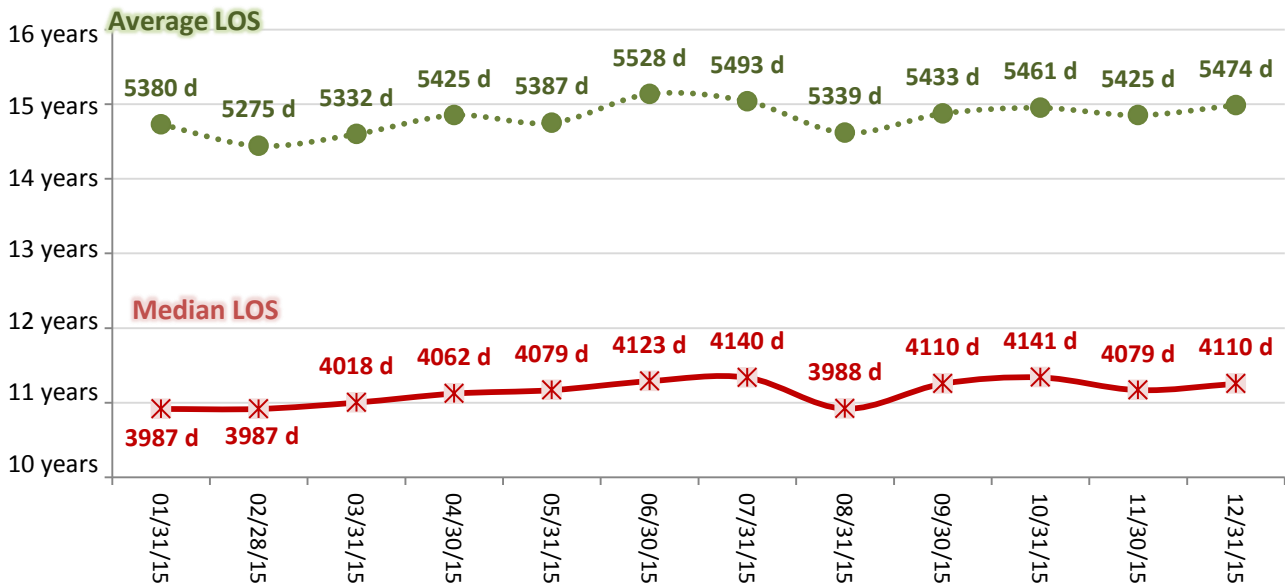
Length of Stay for Individuals in Care with Civil Legal Status



Length of Stay for Individuals in Care with Pre-trial Legal Status



Length of Stay for Individuals in Care with Post-trial Legal Status



Performance Related Information for Staff & Managers

1. Census, Admissions, Discharges & Transfers

Data Source: Avatar

Updated as of 01/15/16

Category	Jan-15	Feb-15	Mar-15	Apr-15	May-15	Jun-15	Jul-15	Aug-15	Sep-15	Oct-15	Nov-15	Dec-15	Monthly Average	Total (12mths)	Figure
Admissions	Civil	18	16	19	20	16	15	14	13	16	11	9	15	182	Figure 1
	Pre-trial	22	21	17	12	22	20	22	14	25	16	17	19	233	
	Post-trial	2	2	1	1	4	1	1	2	0	1	3	2	19	
	Total	42	39	37	33	42	36	41	38	27	42	28	29	36	
Discharges	Civil	19	23	18	15	22	25	17	17	18	9	10	18	210	Figure 2
	Pre-trial	22	16	19	17	16	15	16	15	14	12	14	16	197	
	Post-trial	1	2	3	6	3	4	0	2	1	0	5	2	28	
	Total	42	41	40	38	41	44	33	34	33	39	21	29	36	
Net Increase During Month	Civil	-1	-7	1	5	-6	-10	-2	-3	-5	-1	2	-1	-28	
	Pre-trial	0	5	-2	-5	6	5	9	7	0	4	3		36	
	Post-trial	1	0	-2	-5	1	-3	1	0	-1	0	-2		-9	
	Total	0	-2	-3	-5	1	-8	8	4	-6	3	7	0		
All Individuals on Roll at End of Month	284	281	278	273	274	266	274	278	272	275	282	282	277		
a. Present on Unit	275	274	276	270	269	264	271	275	267	268	278	277	272		
b. On AL	9	7	2	3	5	2	3	3	5	7	4	4	5		
c. On UL	0	0	0	0	0	0	0	0	0	0	0	1	0		
All Individuals on Roll: Daily Average during Month*	284	280	274	274	272	270	270	275	275	277	280	280	276		Figure 3
a. Present on Unit	279	276	269	270	269	264	266	272	270	272	276	275	272		
b. On AL	5	4	5	4	3	6	4	3	5	5	4	4	3.8		
c. On UL	0	0	0	0	0	0	0	0	0	0	0	1	0.08		
Patient Days**	8610	7738	8348	8095	8349	7925	8247	8435	8114	8439	8277	8537	8260	99114	
Inter-Unit Transfers during Month	7	7	11	1	22	14	14	6	13	20	11	9	11	135	Figure 4
Medical Leaves Initiated during Month	Emergency	23	11	11	10	18	20	15	10	13	8	10	13	14	162
	Non-Emer	59	55	71	79	81	96	95	89	69	86	72	72	77	924
	Total	82	66	82	89	99	116	110	99	82	94	82	85	91	1086
Non-Medical Leaves Initiated during Month	412	323	391	334	251	323	374	322	290	356	341	390	342	4107	
UL Initiated during Month	0	0	0	0	1	1	1	0	0	0	0	1	0	4	
Total Unique Patients Served during Month	326	320	317	306	314	305	305	311	302	312	302	308	311		
30 Day Readmission***	Civil	3	3	1	2	1	2	1	1	1	1		2	17	
	Pre-trial	1	0	1	1	0	0	0	0	0	0		0	3	
	Post-trial	0	0	0	2	0	0	0	0	0	0		0	2	
	Total	4	3	2	5	1	2	1	1	1	1		2	22	

* This is the average number of individuals served on a given day for the respective month. Due to rounding from average calculation, numbers from its subcategories a, b, & c may not add up to the total number on this row.

** It counts the number of patients who are present on the unit and excludes those on authorized or unauthorized leave at 11:59pm on a given day.

*** Number of patients returning within 30 days of discharges that occurred during month.

Performance Related Information for Staff & Managers

2. Key Performance Indicators

Data Source: UI DB, MV DB, ADR DB, Restraint/Seclusion Log, and Avatar

Updated as of 01/15/16

Category	Jan-15	Feb-15	Mar-15	Apr-15	May-15	Jun-15	Jul-15	Aug-15	Sep-15	Oct-15	Nov-15	Dec-15	Monthly Average	NPR* (Jun-13)	Figure
30 Day Readmit (Discharge Cohort)**	Civil	15.8%	13.0%	5.6%	13.3%	4.5%	8.0%	5.9%	5.9%	5.6%	5.9%	11.1%	8.8%		Figure 5
	Pre-trial	4.5%	0.0%	5.3%	5.9%	0.0%	0.0%	0.0%	0.0%	0.0%	0.0%	0.0%	1.7%		
	Post-trial	0.0%	0.0%	0.0%	33.3%	0.0%	0.0%	N/A	0.0%	0.0%	0.0%	#DIV/0!	7.8%		
	Combined	9.5%	7.3%	5.0%	13.2%	2.4%	4.5%	3.0%	2.9%	3.0%	2.6%	4.8%	5.5%	6.9%	
Number of Unusual Incidents*	240	198	197	195	274	220	231	202	222	254	155	140	211		Figure 6
Patient Unusual Incident Rate	25.8	24.6	22.2	22.4	30.7	26.0	26.8	22.2	25.3	28.9	17.9	15.5	24.0		Figure 7
UI by Severity	Catastrophe	0	0	0	0	0	0	0	0	0	0	0	0		Figure 9
	High	53	34	35	32	69	27	22	22	37	42	20	15	34	
	Medium	113	103	76	92	108	73	79	65	84	100	31	38	80	
	Low	74	62	86	71	97	120	130	115	101	112	104	87	97	
Physical Assault Incident Rate	8.4	7.5	6.9	5.9	9.2	6.2	5.8	5.3	7.6	8.8	5.6	4.5	6.8		
Selected Types of Incidents	Physical Assault	72	58	58	48	77	49	48	45	62	74	46	38	56	Figure 10
	Aggressive Behav.	73	63	46	59	93	61	83	75	83	102	52	47	70	
	Psych Emergency	89	72	48	64	96	25	39	28	59	55	22	7	50	
	Fall	27	33	27	18	32	28	31	33	23	25	25	22	27	
	Injury	41	32	35	32	50	24	36	31	39	45	23	14	34	
Physical Assaults by Severity	High	28	13	14	9	29	10	5	4	9	20	7	3	13	Figure 11
	Medium	26	30	20	17	23	21	12	19	25	36	11	8	21	
	Low	18	15	24	22	25	18	31	22	28	18	28	27	23	
Patient Injury Rate***	0.00	0.13	0.12	0.12	0.36	0.13	0.12	0.36	0.37	0.12	0.36	0.12	0.19	0.38	
Patients with Major Injuries***	0	1	1	1	3	1	1	3	3	1	3	1	2		Figure 12
Total Patients Injured***	31	22	24	19	29	17	26	20	32	34	13	9	23		
Total Staff Injured***	17	11	13	13	32	12	8	10	10	23	10	6	14		Figure 13
Patient Fall Rate	2.67	4.26	2.99	1.98	3.47	3.15	3.64	3.79	2.71	2.84	3.02	2.34	3.07		Figure 14
Total Patients who Fell	23	33	25	16	29	25	30	32	22	24	25	20	25		
Total Staff who Fell	1	3	4	2	5	3	1	2	2	4	0	3	3		
Percent of Patients Restrained	0.6%	1.3%	0.3%	7.5%	10.2%	8.2%	6.9%	5.8%	7.9%	10.9%	5.6%	4.5%	1.0%	5.8%	Figure 15
Percent of Patients Secluded	3.1%	3.8%	2.8%	2.9%	3.5%	3.3%	2.0%	4.8%	4.3%	5.1%	4.0%	3.2%	3.6%	2.4%	
Restraint Hours Rate	0.072	0.015	0.004	0.031	0.098	0.074	0.163	0.008	0.031	0.084	0.051	0.005	0.060	0.71	Figure 16
Seclusion Hours Rate	0.045	0.088	0.101	0.043	0.060	0.150	0.067	0.062	0.260	0.281	0.043	0.046	0.103	0.44	
Elopement Rate	0.00	0.00	0.00	0.00	0.12	0.13	0.12	0.00	0.00	0.00	0.00	0.12	0.04	0.13	Figure 17
Medication Variance Rate	1.16	5.56	10.54	2.22	2.16	1.51	2.06	1.42	0.86	4.50	2.90	4.10	3.25		Figure 18
Adverse Drug Reaction Rate	0.46	0.13	0.48	0.25	0.36	0.38	0.24	0.36	0.12	0.00	0.36	0.23	0.28		Figure 19
Missing Med-Admin Documentation	0.86%	0.87%	0.56%	0.54%	0.62%	0.93%	0.76%	0.50%	0.42%	0.47%	0.33%	0.44%	0.61%		Figure 20
Percent of Medication Refusal	7.45%	7.22%	6.89%	6.58%	7.23%	5.92%	5.88%	6.17%	5.57%	6.90%	7.44%	6.44%	6.65%		Figure 21
SiteFM Work Orders Completed within 3 days	72%	61%	73%	73%	65%	73%	67%	63%	70%	75%	75%	74%	70%		Figure 23
Total SiteFM Work Orders	521	506	498	487	436	561	543	515	503	509	435	466	498		
Total SiteFM Work Orders	721	831	678	667	667	768	816	821	715	682	581	632	715		

* National Public Rate, NASMHPD Research Institute, National Research Institute (NRI), Data as of June 2013, Published in November 2013.

** Percentage of patients returning within 30 days of discharges that occurred during month

*** Refer to the next page [UI & Medication]

Performance Related Information for Staff & Managers

3. Unusual Incident & Medication

Data Source: UI DB, MV DB, ADR DB, and Avatar

Updated as of 01/15/16

Category		Jan-15	Feb-15	Mar-15	Apr-15	May-15	Jun-15	Jul-15	Aug-15	Sep-15	Oct-15	Nov-15	Dec-15	Monthly Average	Total (12mths)	NPR* (Jun-13)
Unusual Incidents (excluding MV)**	Total UIs	240	198	197	195	274	220	231	202	222	254	155	140	211	2528	
	Major UIs Only	188	157	146	153	225	130	126	115	141	154	91	90	143	1716	
	Pt Involved UI Only	222	190	185	181	256	206	221	187	205	244	148	132	198	2377	
	Patient UI Rate	25.8	24.6	22.2	22.4	30.7	26.0	26.8	22.2	25.3	28.9	17.9	15.5		24.0	
	Unique Pts Involved in UI	139	115	134	107	138	104	132	111	117	127	112	104	120	1440	
Selected Types of Incidents	Physical Assault	72	58	58	48	77	49	48	45	62	74	46	38	56	675	
	Aggressive Behavior	73	63	46	59	93	61	83	75	83	102	52	47	70	837	
	Psych Emergency	89	72	48	64	96	25	39	28	59	55	22	7	50	604	
	Fall	27	33	27	18	32	28	31	33	23	25	25	22	27	324	
	Injury	41	32	35	32	50	24	36	31	39	45	23	14	34	402	
	Physical Assault Rate	8.4	7.5	6.9	5.9	9.2	6.2	5.8	5.3	7.6	8.8	5.6	4.5		6.8	
UI by Severity	Catastrophe	0	0	0	0	0	0	0	0	0	0	0	0	0	0	
	High	53	34	35	32	69	27	22	22	37	42	20	15	34	408	
	Medium	113	103	76	92	108	73	79	65	84	100	31	38	80	962	
	Low	74	62	86	71	97	120	130	115	101	112	104	87	97	1159	
Physical Assaults by Severity	High	28	13	14	9	29	10	5	4	9	20	7	3	13	151	
	Medium	26	30	20	17	23	21	12	19	25	36	11	8	21	248	
	Low	18	15	24	22	25	18	31	22	28	18	28	27	23	276	
Total Patients who Fell	23	33	25	16	29	25	30	32	22	24	25	20	25	304		
	Patient Fall Rate	2.67	4.26	2.99	1.98	3.47	3.15	3.64	3.79	2.71	2.84	3.02	2.34		3.07	0.38
Total Staff who Fell	1	3	4	2	5	3	1	2	2	4	0	3	3	30		
Total Patients Injured***	31	22	24	19	29	17	26	20	32	34	13	9	23	276		
	Patients with Major Injuries***	0	1	1	1	3	1	1	3	3	1	3	1	2	19	
	Patient Injury Rate***	0.00	0.13	0.12	0.12	0.36	0.13	0.12	0.36	0.37	0.12	0.36	0.12		0.19	0.38
Total Staff Injured**	17	11	13	13	32	12	8	10	10	23	10	6	14			
Total UIs Documented in Avatar	0	0	0	0	1	1	1	0	0	0	0	1	0	4		
	Elopement Rate	0.00	0.00	0.00	0.00	0.12	0.13	0.12	0.00	0.00	0.00	0.12		0.04	0.13	
Med Variance (MV) Reports**	10	43	88	18	18	12	17	12	7	38	24	35	27	322		
	MV Rate	1.16	5.56	10.54	2.22	2.16	1.51	2.06	1.42	0.86	4.50	2.90	4.10		3.25	
Adverse Drug Reactions Reports	4	1	4	2	3	3	2	3	1	0	3	2	2	28		
	ADR Rate	0.46	0.13	0.48	0.25	0.36	0.38	0.24	0.36	0.12	0.00	0.36	0.23		0.28	
Total Med Administrations Scheduled	#####	96178	103742	99674	101673	98847	101726	104695	99956	105811	102613	105331		1229871		
Total Missing Documentations	939	838	579	543	626	923	777	522	423	500	336	459		7465		
	Percent of Missing Documentation	0.86%	0.87%	0.56%	0.54%	0.62%	0.93%	0.76%	0.50%	0.42%	0.33%	0.44%		0.61%		
Total Medication Doses Refused	8164	6940	7145	6562	7352	5856	5977	6463	5572	7303	7635	6788		81757		
	Percent of Medication Refusal	7.45%	7.22%	6.89%	6.58%	7.23%	5.92%	5.88%	6.17%	5.57%	6.90%	7.44%	6.44%		6.65%	
Total STAT Orders	220	135	104	144	252	159	141	138	182	251	112	149	166		Figure 22	
Total STAT Events****	98	68	52	73	116	68	66	62	83	119	53	66	77			
Total Individuals Involved >=1 STAT	40	31	32	29	42	33	31	34	38	49	31	18	34			
Total Patients with >=3 STAT Events	7	8	3	13	15	7	7	7	11	15	2	5	8			

* National Public Rate, NASMHPD Research Institute, National Research Institute (NRI), Data as of June 2013, Published in November 2013.

** Numbers may change if any additional UI report is made after the data run date from UI database (around the 15th of the following month); According to the revised UI policy as of November 4, 2013, a medication variance (MV) incident became no longer considered to be an unusual incident, and a medication or vital sign refusal incident is not longer an UI as of May 2014. UI data for the past 12 months in this report has been updated to reflect this change and reanalyzed in order to show the UI trend in consistent logic.

*** Injury is broadly defined to include any type of injuries regardless of the cause or severity level. The total number of patients injured represents all of the reported injuries including minor injuries treated with first aid alone. However, the patient injury rate considers only the number of patient injuries that required beyond first-aid level treatment based on the NRI definition and the patient injury rate is the number of 'major' patient injuries per every 1000 inpatient days

**** One STAT event may involve more than one STAT order for the same patient. Any orders placed within 20 minute timeframe are considered to belong to one STAT event.

Performance Related Information for Staff & Managers

4. Restraint & Seclusion

Data Source: Restraint/Seclusion Log and UI DB (for # of total events and patients) and Avatar (for patient days/hours)

Updated as of 01/15/16

Category		Jan-15	Feb-15	Mar-15	Apr-15	May-15	Jun-15	Jul-15	Aug-15	Sep-15	Oct-15	Nov-15	Dec-15	Monthly Average	Total (12mths)	NPR* (Jun-13)
Number of Restraint Events	Mechanical	9	4	1	6	16	5	15	1	3	8	1	1	5.8	70	
	Physical Hold				42	61	35	26	27	38	67	21	15	36.9		
	Total				48	77	40	41	28	41	75	22	16	43.1		
Number of Unique Patients Restrained	Mechanical	2	4	1	3	7	5	4	1	2	6	1	1	3.1		
	Physical Hold				20	25	20	17	17	22	28	16	13	19.8		
	Total				23	32	25	21	18	24	34	17	14	23.1		
Percentage of Patients Restrained**	Mechanical	0.6%	1.3%	0.3%	1.0%	2.2%	1.6%	1.3%	0.3%	0.7%	1.9%	0.3%	0.3%	1.0%		
	Physical Hold				6.5%	8.0%	6.6%	5.6%	5.5%	7.3%	9.0%	5.3%	4.2%	6.4%		
	Total				7.5%	10.2%	8.2%	6.9%	5.8%	7.9%	10.9%	5.6%	4.5%	7.5%		5.8%
Total Restraint Hours (h:mm)**	Mechanical	14:56	2:46	0:50	5:19	18:37	13:22	31:37	0:05	2:45	10:29	8:21	0:05	9:06	109:12	
	Physical Hold				0:42	1:01	0:47	0:37	1:36	3:22	6:35	1:42	1:01	1:55	6 mths	
	Total				6:01	19:38	14:09	32:14	1:41	6:07	17:04	10:03	1:06	12:00	6 mths	
Restraint Hours Rate**	Mechanical	0.072	0.015	0.004	0.027	0.093	0.070	0.160	0.000	0.014	0.052	0.042	0.000	0.046	12 mths	
	Physical Hold				0.004	0.005	0.004	0.003	0.008	0.017	0.033	0.009	0.005	0.010	6 mths	
	Total				0.031	0.098	0.074	0.163	0.008	0.031	0.084	0.051	0.005	0.060	6 mths	0.71
Number of Seclusion Events	15	20	15	15	20	21	14	18	37	40	13	11	19.9	239		
Number of Unique Patients Secluded	10	12	9	9	11	10	6	15	13	16	12	10	11.1			
Percentage of Patients Secluded	3.1%	3.8%	2.8%	2.9%	3.5%	3.3%	2.0%	4.8%	4.3%	5.1%	4.0%	3.2%	3.6%		2.4%	
Total Seclusion Hours (h:mm)	9:24	16:21	20:15	8:24	12:02	28:28	13:18	12:36	50:35	56:52	8:33	9:23	20:30	246:11		
Seclusion Hours Rate	0.045	0.088	0.101	0.043	0.060	0.150	0.067	0.062	0.260	0.281	0.043	0.046		0.103	0.44	

* National Public Rate, NASMHPD Research Institute, National Research Institute (NRI), Data as of June 2013, Published in November 2013.

** Restraint data prior to April 2015 includes only mechanical restraints. The Hospital's restraint policy has been revised to consider a physical hold a restraint and data as of April 2015 reflects this change. The duration of each physical hold event is counted as one (1) minute as a physical hold is ordered/used only as a temporary intervention that lasts less than a minute to break up any physical altercations or to administer emergency medications.

Performance Related Information for Staff & Managers

5. Major Unusual Incidents by Incident Location/Unit

Data Source: UI DB

Updated as of 01/15/16

Category		Jan-15	Feb-15	Mar-15	Apr-15	May-15	Jun-15	Jul-15	Aug-15	Sep-15	Oct-15	Nov-15	Dec-15	Monthly Average	Total (12mths)	Percent
Total Unusual Incidents		240	198	197	195	274	220	231	202	222	254	155	140	211	2528	100%
Incident Location	1A	5	5	12	13	16	18	8	8	16	6	6	10	10	123	5%
	1B	12	10	13	18	8	7	15	21	19	18	21	20	15	182	7%
	1C	28	25	7	7	33	22	8	19	12	15	12	14	17	202	8%
	1D	37	15	23	27	29	18	37	17	22	24	11	11	23	271	11%
	1E	15	12	12	25	37	14	27	15	29	21	9	6	19	222	9%
	1F	43	28	28	20	46	28	18	17	30	46	16	14	28	334	13%
	1G	11	12	7	16	12	14	21	21	12	17	13	15	14	171	7%
	2A	16	3	6	5	7	5	14	4	14	11	0	8	8	93	4%
	2B	2	3	4	4	5	3	5	3	4	1	4	2	3	40	2%
	2C	14	24	10	2	9	20	24	14	15	35	17	12	16	196	8%
	2D	19	19	33	24	22	24	23	23	14	27	16	7	21	251	10%
	TLC	21	31	27	16	25	32	14	18	17	26	23	8	22	258	10%
	Other	17	11	15	18	25	15	17	22	18	7	7	13	15	185	7%
Physical Assault		72	58	58	48	77	49	48	45	62	74	46	38	56	675	100%
Incident Location	1A	1	2	4	2	3	4	3	1	2	0	2	6	3	30	4%
	1B	0	1	0	1	0	0	0	3	1	1	5	3	1	15	2%
	1C	6	6	2	1	15	4	2	8	4	4	5	3	5	60	9%
	1D	10	4	7	7	6	3	9	2	6	9	3	3	6	69	10%
	1E	5	4	8	6	6	5	6	4	10	4	2	1	5	61	9%
	1F	15	13	10	8	20	14	8	4	17	28	5	6	12	148	22%
	1G	4	5	1	4	1	6	5	7	6	4	1	4	4	48	7%
	2A	5	1	0	1	0	0	1	0	2	1	0	0	1	11	2%
	2B	0	0	0	0	0	0	0	0	0	0	0	6	1	6	1%
	2C	7	10	4	0	3	3	6	3	4	11	9	2	5	62	9%
	2D	7	4	12	12	8	4	6	10	4	7	5	2	7	81	12%
	TLC - Intensive	8	6	9	2	7	5	2	3	2	5	7	1	5	57	8%
	TLC - Transitional	3	1	1	3	2	0	0	0	2	0	2	1	1	15	2%
	Other	1	1	0	1	6	1	0	0	2	0	0		1	12	2%

Performance Related Information for Staff & Managers

5. Major Unusual Incidents by Incident Location/Unit

Data Source: UI DB

Updated as of 01/15/16

Category		Jan-15	Feb-15	Mar-15	Apr-15	May-15	Jun-15	Jul-15	Aug-15	Sep-15	Oct-15	Nov-15	Dec-15	Monthly Average	Total (12mths)	Percent
Aggressive Behavior		73	63	46	59	93	61	83	75	83	102	52	47	70	837	124%
Incident Location	1A	0	0	0	1	0	2	1	1	1	4	1	1	1	12	2%
	1B	0	0	1	3	0	0	2	9	7	2	5	4	3	33	5%
	1C	10	12	2	2	9	9	3	7	3	4	5	9	6	75	11%
	1D	21	8	7	14	15	11	14	6	11	10	4	6	11	127	19%
	1E	7	5	1	12	21	5	11	6	14	15	4	3	9	104	15%
	1F	15	10	7	7	19	6	5	4	9	11	4	6	9	103	15%
	1G	0	2	1	6	8	3	10	11	3	8	6	5	5	63	9%
	2A	6	2	2	1	3	2	11	3	10	7	0	3	4	50	7%
	2B	0	0	0	0	0	0	1	0	0	0	0	0	0	1	0%
	2C	1	5	3	0	2	7	6	5	6	17	2	1	5	55	8%
	2D	5	7	11	6	6	5	12	10	8	15	7	3	8	95	14%
	TLC - Intensive	4	8	6	4	4	6	1	3	4	5	8	2	5	55	8%
	TLC - Transitional	3	2	2	3	5	4	4	3	4	2	4	1	3	37	5%
	Other	1	2	3	0	1	1	2	7	3	2	2	3	2	27	4%
Psych Emergency		89	72	48	64	96	25	39	28	59	55	22	7	50	604	89%
Incident Location	1A	1	1	0	1	0	0	1	0	0	1	0	0	0	5	1%
	1B	0	0	0	3	0	0	2	5	4	3	1	0	2	18	3%
	1C	8	7	4	1	19	2	4	2	2	2	2	1	5	54	8%
	1D	16	11	10	15	16	5	9	3	9	12	7	3	10	116	17%
	1E	11	7	5	18	20	5	7	3	15	7	1	1	8	100	15%
	1F	22	15	15	10	26	9	3	3	14	13	3	0	11	133	20%
	1G	1	2	1	4	2	1	5	3	3	2	2	1	2	27	4%
	2A	4	1	0	2	3	1	4	1	5	5	0	0	2	26	4%
	2B	0	0	0	0	0	0	0	0	0	0	0	0	0	0	0%
	2C	4	7	1	0	0	0	0	2	3	5	2	1	2	25	4%
	2D	14	9	3	7	3	2	1	2	1	2	2	0	4	46	7%
	TLC - Intensive	5	10	6	1	1	0	2	1	1	2	1	0	3	30	4%
	TLC - Transitional	3	0	1	2	4	0	1	1	0	1	1	0	1	14	2%
	Other	0	2	2	0	2	0	0	2	2	0	0	0	1	10	1%

Performance Related Information for Staff & Managers

5. Major Unusual Incidents by Incident Location/Unit

Data Source: UI DB

Updated as of 01/15/16

Category		Jan-15	Feb-15	Mar-15	Apr-15	May-15	Jun-15	Jul-15	Aug-15	Sep-15	Oct-15	Nov-15	Dec-15	Monthly Average	Total (12mths)	Percent
Fall		27	33	27	18	32	28	31	33	23	25	25	22	27	324	100%
Incident Location	1A	3	2	5	0	8	8	3	3	9	1	2	3	4	47	15%
	1B	3	6	3	2	2	5	9	8	7	5	8	4	5	62	19%
	1C	2	0	3	1	2	0	0	0	1	1	1	1	1	12	4%
	1D	1	0	2	4	1	0	1	2	0	2	0	1	1	14	4%
	1E	0	2	0	0	1	2	2	3	1	2	2	0	1	15	5%
	1F	7	4	3	1	2	1	6	2	0	3	1	1	3	31	10%
	1G	2	4	1	1	2	4	1	4	0	1	2	5	2	27	8%
	2A	0	0	1	1	2	0	2	0	1	1	0	1	1	9	3%
	2B	0	1	1	2	2	1	1	3	0	0	1	0	1	12	4%
	2C	3	5	0	0	0	1	1	0	1	5	4	2	2	22	7%
	2D	1	3	3	2	3	3	1	2	1	0	0	2	2	21	6%
	TLC - Intensive	2	1	1	1	4	1	1	2	0	4	3	1	2	21	6%
	TLC - Transitional	0	1	0	0	0	0	1	1	0	0	1	1	0	5	2%
	Other	3	4	4	3	3	2	2	3	2	0	0	0	2	26	8%
Physical Injury		41	32	35	32	50	24	36	31	39	45	23	14	34	402	100%
Incident Location	1A	2	2	2	2	3	1	2	0	1	0	1	1	1	17	4%
	1B	0	1	4	5	2	0	0	3	3	1	2	1	2	22	5%
	1C	5	4	3	0	11	2	2	8	7	3	0	0	4	45	11%
	1D	4	1	7	5	6	3	6	4	4	9	3	2	5	54	13%
	1E	0	2	1	2	5	3	2	3	3	1	1	0	2	23	6%
	1F	5	8	7	3	8	6	5	3	9	17	5	2	7	78	19%
	1G	3	1	0	1	0	1	2	2	3	3	1	1	2	18	4%
	2A	0	1	0	2	1	0	1	0	1	1	0	0	1	7	2%
	2B	0	0	0	1	1	1	1	1	2	0	1	1	1	9	2%
	2C	6	6	1	0	1	2	3	0	3	5	4	3	3	34	8%
	2D	5	1	1	4	3	3	3	3	1	3	0	1	2	28	7%
	TLC - Intensive	7	1	5	2	4	1	5	0	1	2	4	0	3	32	8%
	TLC - Transitional	1	2	0	0	2	0	0	0	0	0	0	0	0	5	1%
	Other	3	2	4	5	3	1	4	4	1	0	1	2	3	30	7%

* Not every incident is a major incident. This counts only those incidents that were classified to be major based on the policy.

Performance Related Information for Staff & Managers

6A. Demographic Information of Individuals in Care

Data Source: Avatar

Updated as of 01/15/16

Category	Sub-group	Jan-15	Feb-15	Mar-15	Apr-15	May-15	Jun-15	Jul-15	Aug-15	Sep-15	Oct-15	Nov-15	Dec-15	Monthly Average	Percent*
Total Active (on Roll) at End of Month*		284	281	278	273	274	266	274	278	272	275	282	282	277	
Gender	Female	90	89	87	90	87	81	85	85	81	85	88	92	87	31.3%
	Male	194	192	191	183	187	185	189	193	191	190	194	190	190	68.7%
Age	Median Age (Years)	55 yrs	56 yrs	56 yrs	55 yrs	56 yrs	55 yrs	55 yrs	55 yrs	56 yrs	56 yrs	56 yrs	56 yrs	56 yrs	Figure 24
	<30 years old	30	37	38	43	40	38	36	44	40	40	40	42	39	14.1%
	>=30 and <40 years old	34	31	29	28	29	32	39	32	31	31	35	32	32	11.5%
	>=40 and <50 years old	35	32	32	32	34	33	33	26	22	29	31	30	31	11.1%
	>=50 and <60 years old	79	71	69	67	63	61	63	72	68	62	63	61	67	24.1%
	>=60 years old	106	110	110	103	108	102	103	104	111	113	113	117	108	39.2%
Legal Status of Individuals on Roll at End of Month	Emergency	27	27	38	45	38	32	32	25	25	24	23	26	30	10.9%
	Inpatient Commitment	36	36	33	35	34	34	33	33	32	28	30	31	33	11.9%
	Outpatient Commitment	27	28	17	16	21	22	22	28	25	27	30	26	24	8.7%
	Voluntary	37	34	38	35	37	36	37	37	37	40	41	41	38	13.6%
	Non-Protesting	1	1	0	0	0	0	0	0	0	0	0	0	0	0.1%
	Civil Sub-total	128	126	126	131	130	124	124	123	119	119	124	124	125	45.1%
	DC Exam	40	41	38	38	39	30	35	36	39	43	46	46	39	14.2%
	Mentally Incompetent	25	23	25	20	20	30	32	36	32	31	29	31	28	10.1%
	Forensic Pre-trial Sub-total	65	64	63	58	59	60	67	72	71	74	75	77	67	24.3%
	NGBRI - DC	76	76	74	70	72	69	70	71	70	70	71	68	71	25.8%
	NGBRI - US	10	10	10	9	9	9	9	8	8	8	8	8	9	3.2%
	NGBRI - VI	1	1	1	1	1	1	1	1	1	1	1	1	1	0.4%
	Dual Commitment	1	1	1	1	0	0	0	0	0	0	0	0	0	0.1%
Post Trial Mental Exam PTME	0	0	0	0	0	0	0	0	0	0	0	1	0	0.0%	
Sexual Psychopath (Miller Act)	3	3	3	3	3	3	3	3	3	3	3	3	3	1.1%	
Forensic Post-trial Sub-total	91	91	89	84	85	82	83	83	82	82	83	81	85	30.6%	
Length of Stay	<30 Days	40	37	35	31	39	33	37	36	22	35	26	26	33	12.0%
	>=30 ~ <365 Days	99	100	101	101	93	91	92	95	101	90	103	107	98	35.3%
	>= 1 Year & < 2 Years	27	24	24	26	27	29	31	33	34	33	36	33	30	10.8%
	>= 2 Years & < 5 Years	30	32	32	31	32	30	29	30	31	33	33	34	31	11.4%
	>= 5 Years & < 20 Years	46	47	45	46	45	46	48	48	48	48	48	46	47	16.9%
	>= 20 Years	42	41	41	38	38	37	37	36	36	36	36	36	38	13.7%
	Median LOS (Days)	381 d	402 d	403 d	388 d	414 d	448 d	445 d	436 d	466 d	465 d	462 d	484 d	433 d	Figure 25
	Median LOS - Civil	379 d	402 d	403 d	378 d	384 d	439 d	470 d	501 d	540 d	571 d	567 d	568 d	467 d	
	Median LOS - Pre-trial	46 d	46 d	57 d	77 d	54 d	49 d	53 d	59 d	78 d	63 d	69 d	76 d	60 d	
	Median LOS - Post-trial	3987 d	3987 d	4018 d	4062 d	4079 d	4123 d	4140 d	3988 d	4110 d	4141 d	4079 d	4110 d	4069 d	
	Average LOS (Days)	2500 d	2490 d	2483 d	2421 d	2424 d	2451 d	2400 d	2333 d	2400 d	2391 d	2356 d	2341 d	2416 d	
Average LOS - Civil	1688 d	1709 d	1661 d	1513 d	1532 d	1547 d	1567 d	1604 d	1666 d	1686 d	1648 d	1661 d	1624 d		
Average LOS - Pre-trial	89 d	93 d	101 d	123 d	120 d	115 d	110 d	115 d	126 d	123 d	130 d	138 d	115 d		
Average LOS - Post-trial	5380 d	5275 d	5332 d	5425 d	5387 d	5528 d	5493 d	5339 d	5433 d	5461 d	5425 d	5474 d	5413 d		

* Counts the total number of individuals who are on the hospital roll at end of each month. This number serves as denominator to calculate percentage of each group.

Performance Related Information for Staff & Managers

6B. Demographic Information of Individuals in Care

Data Source: Avatar

Updated as of 01/15/16

Category	Sub-group	Jan-15	Feb-15	Mar-15	Apr-15	May-15	Jun-15	Jul-15	Aug-15	Sep-15	Oct-15	Nov-15	Dec-15	Monthly Average	Percent*
Total Active (on Roll) at End of Month*		284	281	278	273	274	266	274	278	272	275	282	282	277	
Gender	Female	32%	32%	31%	33%	32%	30%	31%	31%	30%	31%	31%	33%	31%	
	Male	68%	68%	69%	67%	68%	70%	69%	69%	70%	69%	69%	67%	69%	
Age	Median Age (Years)	55 yrs	56 yrs	56 yrs	55 yrs	56 yrs	55 yrs	55 yrs	55 yrs	56 yrs	56 yrs	56 yrs	56 yrs	56 yrs	
	<30 yrs	11%	13%	14%	16%	15%	14%	13%	16%	15%	15%	14%	15%	14%	
	>=30 and <40 yrs	12%	11%	10%	10%	11%	12%	14%	12%	11%	11%	12%	11%	12%	
	>=40 and <50 yrs	12%	11%	12%	12%	12%	12%	12%	9%	8%	11%	11%	11%	11%	
	>=50 and <60 yrs	28%	25%	25%	25%	23%	23%	23%	26%	25%	23%	22%	22%	24%	
	>=60 yrs	37%	39%	40%	38%	39%	38%	38%	37%	41%	41%	40%	41%	39%	
Legal Status of Individuals on Roll at End of Month	Emergency	10%	10%	14%	16%	14%	12%	12%	9%	9%	9%	8%	9%	11%	
	Inpatient Commitment	13%	13%	12%	13%	12%	13%	12%	12%	12%	12%	10%	11%	12%	
	Outpatient Commitment	10%	10%	6%	6%	8%	8%	8%	10%	9%	10%	11%	9%	9%	
	Voluntary	13%	12%	14%	13%	14%	14%	14%	13%	14%	15%	15%	15%	14%	
	Non-Protesting	0%	0%	0%	0%	0%	0%	0%	0%	0%	0%	0%	0.0%	0%	
	Civil Sub-total	45%	45%	45%	48%	47%	47%	45%	44%	44%	43%	44%	44%	45%	
	DC Exam	14%	15%	14%	14%	14%	11%	13%	13%	14%	16%	16%	16%	14%	
	Mentally Incompetent	9%	8%	9%	7%	7%	11%	12%	13%	12%	11%	10%	11%	10%	
	Forensic Pre-trial Sub-total	23%	23%	23%	21%	22%	23%	24%	26%	26%	27%	27%	27%	24%	
	NGBRI - DC	27%	27%	27%	26%	26%	26%	26%	26%	26%	25%	25%	24%	26%	
	NGBRI - US	4%	4%	4%	3%	3%	3%	3%	3%	3%	3%	3%	3%	3%	
	NGBRI - VI	0%	0%	0%	0%	0%	0%	0%	0%	0%	0%	0%	0%	0%	
	Dual Commitment	0%	0%	0%	0%	0%	0%	0%	0%	0%	0%	0%	0%	0%	
Sexual Psychopath (Miller Ac	1%	1%	1%	1%	1%	1%	1%	1%	1%	1%	1%	1%	1%		
Forensic Post-trial Sub-total	32%	32%	32%	31%	31%	31%	30%	30%	30%	30%	30%	29%	29%	31%	
Length of Stay	Median LOS (Days)	381 d	402 d	403 d	388 d	414 d	448 d	445 d	436 d	466 d	465 d	462 d	484 d	433 d	
	Average LOS (Days)	2500 d	2490 d	2483 d	2421 d	2424 d	2451 d	2400 d	2333 d	2400 d	2391 d	2356 d	2341 d	2416 d	
	<30 days	14%	13%	13%	11%	14%	12%	14%	13%	8%	13%	9%	9%	12%	
	>=30 days & <365 days	35%	36%	36%	37%	34%	34%	34%	34%	37%	33%	37%	38%	35%	
	>= 1 year & < 2 years	10%	9%	9%	10%	10%	11%	11%	12%	13%	12%	13%	12%	11%	
	>= 2 years & < 5 years	11%	11%	12%	11%	12%	11%	11%	11%	11%	12%	12%	12%	11%	
	>= 5 years & < 20 years	16%	17%	16%	17%	16%	17%	18%	17%	18%	17%	17%	16%	17%	
>= 20 years	15%	15%	15%	14%	14%	14%	14%	13%	13%	13%	13%	13%	14%		

* Counts the total number of individuals who are on the hospital roll at end of each month. This number serves as denominator to calculate percentage of each group.