

**Government of the District of Columbia  
Department of Mental Health (DMH)**

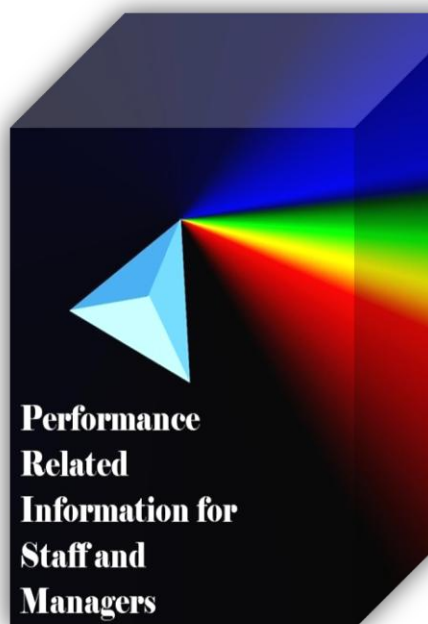


**Performance Related Information for Staff and Managers**

# **PRISM**

## **DECEMBER 2012**

Table of Contents



1.	Admissions to SEH .....	1
2.	Discharges from SEH.....	1
3.	Average Daily Census .....	1
4.	Transfers .....	2
5.	30-Day Readmission Rate .....	2
6.	Unusual Incidents.....	2
7.	Unusual Incidents by Severity .....	3
8.	Patient-Involved Unusual Incidents.....	3
9.	Selected Types of Incidents .....	4
10.	Physical Assaults by Severity .....	4
11.	Patient Injuries.....	5
12.	Staff Injuries.....	5
13.	Eloperments .....	5
14.	Reported Medication Variance Events .....	6
15.	Reported Adverse Drug Reactions.....	6
16.	Percent of Missing Documentation on Med-Administration.....	6
17.	Number of STAT Events and Individuals Involved .....	7
18.	Percent of Patients Restrained or Secluded.....	7
19.	Restraint Hours Rate & Seclusion Hours Rate .....	7

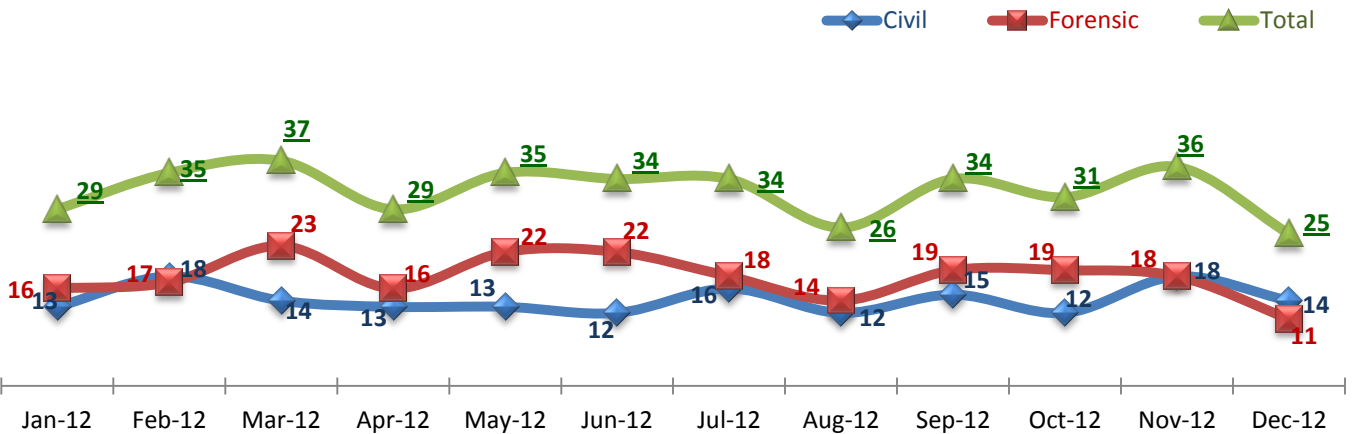
  

<input type="checkbox"/>	<i>Appendix 1) Table – Census, Admissions &amp; Discharges</i>
<input type="checkbox"/>	<i>Appendix 2) Table – Key Performance Indicators</i>
<input type="checkbox"/>	<i>Appendix 3) Table – Unusual Incident &amp; Medication</i>
<input type="checkbox"/>	<i>Appendix 4) Table – Restraint &amp; Seclusion</i>
<input type="checkbox"/>	<i>Appendix 5) Table – Major Incidents by Incident Location/Unit</i>
<input type="checkbox"/>	<i>Appendix 6) Table – Demographic Information of Individuals in Care</i>

**01/09/2013**

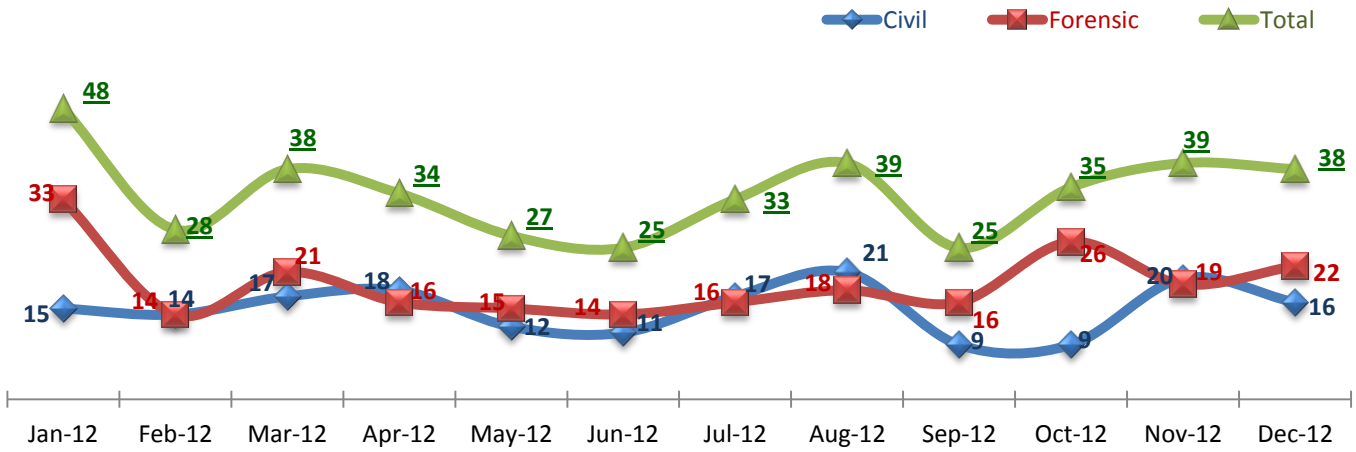
**Office of Statistics and Reporting (OSR)**

### 1. Admissions to SEH



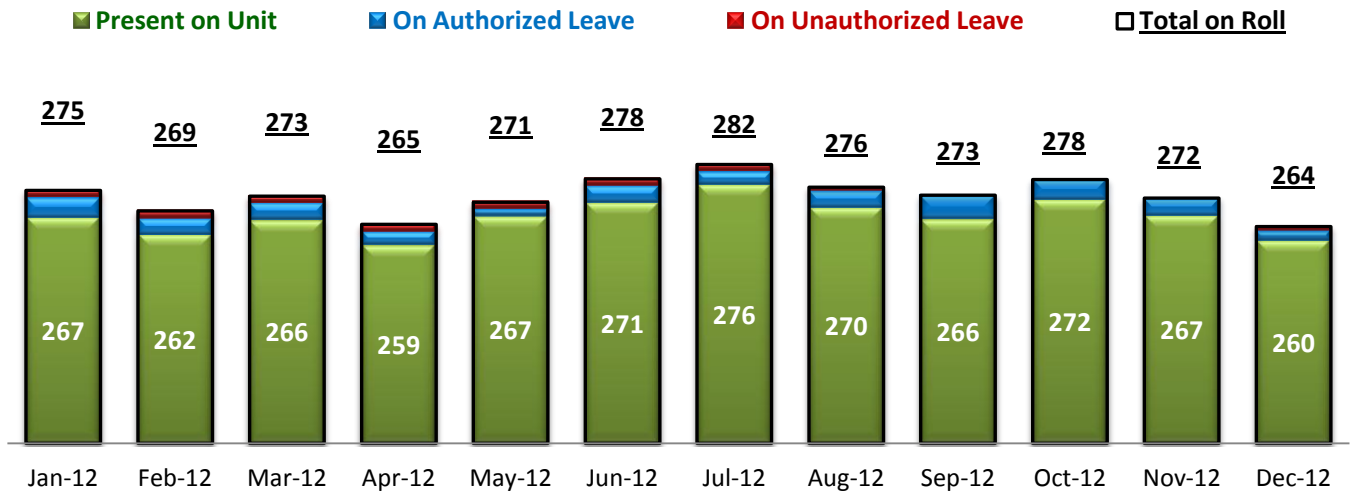
\* Number of admissions to SEH inpatient program, including transfers from outpatient to inpatient program.

### 2. Discharges from SEH



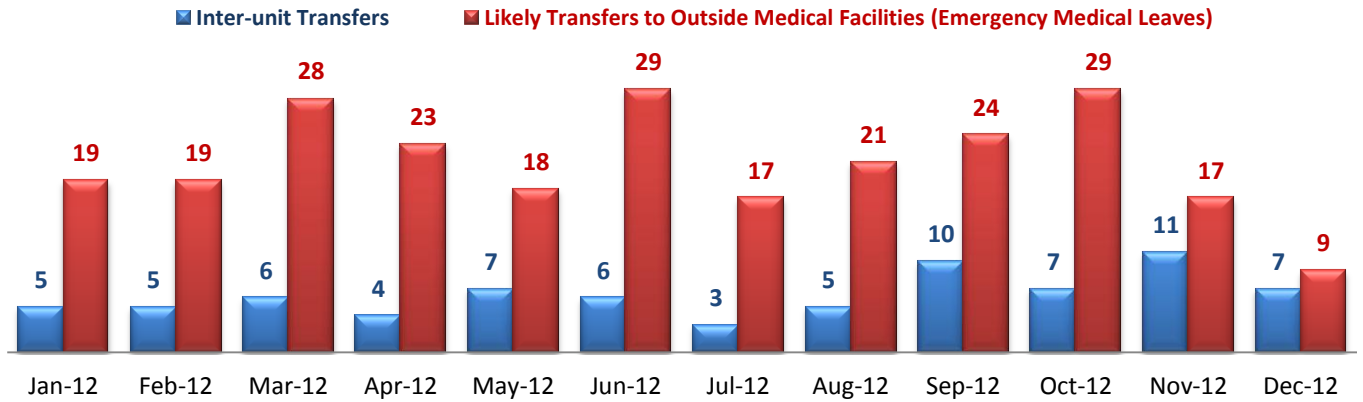
\* Number of discharges from SEH inpatient program, including transfers from inpatient to outpatient program.

### 3. Average Daily Census



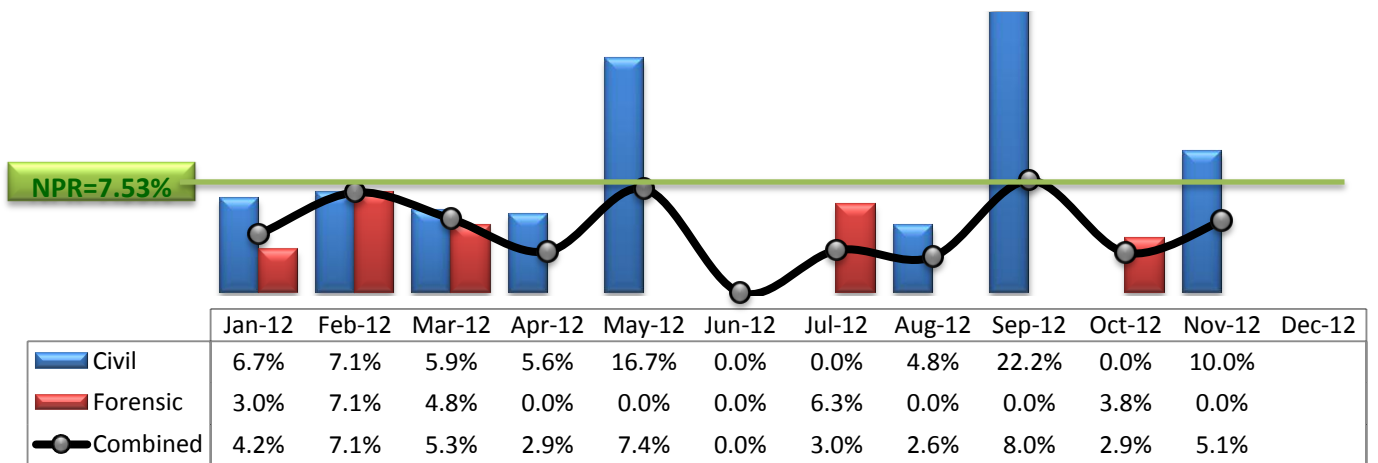
\* Data above is the daily average number of individuals counted at 11:59 PM every day during each month.

### 4. Transfers



\* Number of inter-unit transfers that occurred during month and number of emergency medical leaves that were initiated during month.

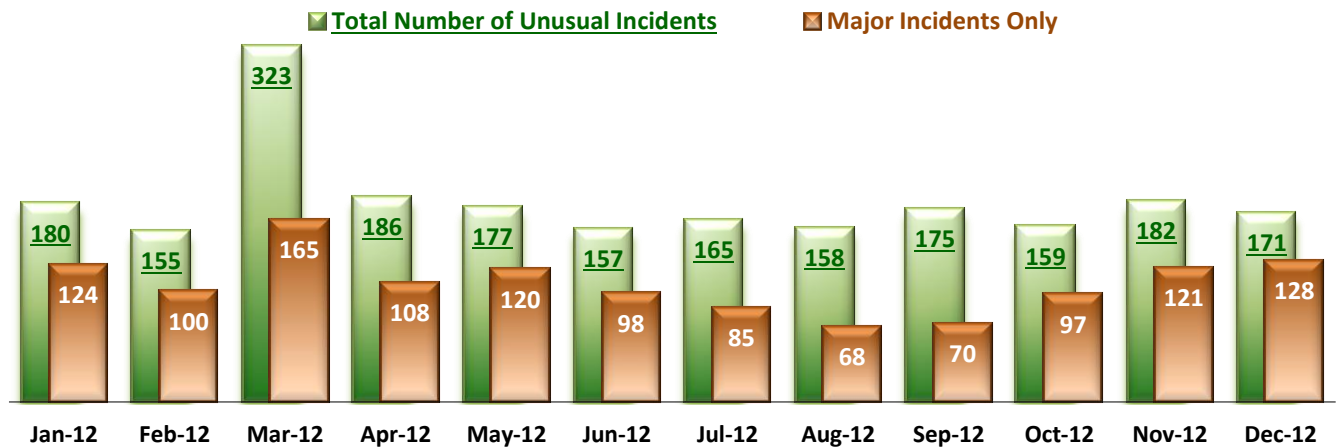
### 5. 30-Day Readmission Rate



\* Percent of discharges that returned to SEH within 30 days of discharges. It does not include those who may have been re-hospitalized at another psychiatric facility. This measure requires 30-day observation following discharge.

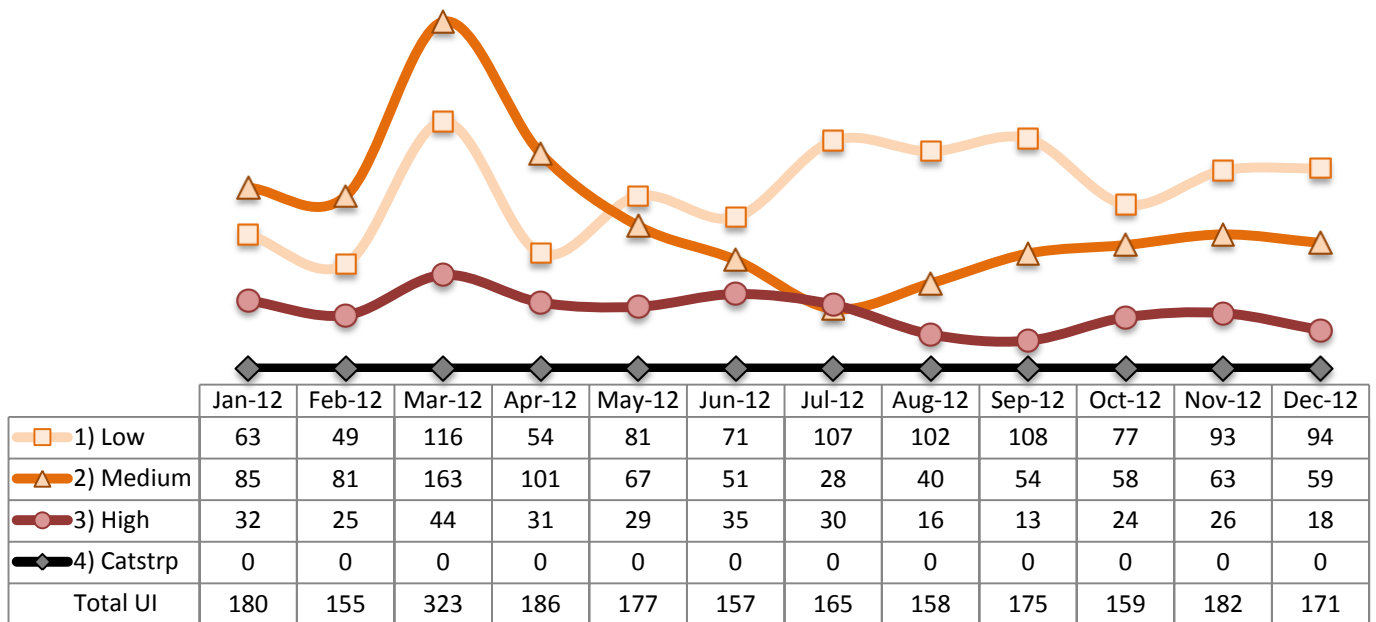
\*\* NPR: National Public Rate as of September 2011 published by NASMHPD Research Institute in January 2012.

### 6. Unusual Incidents

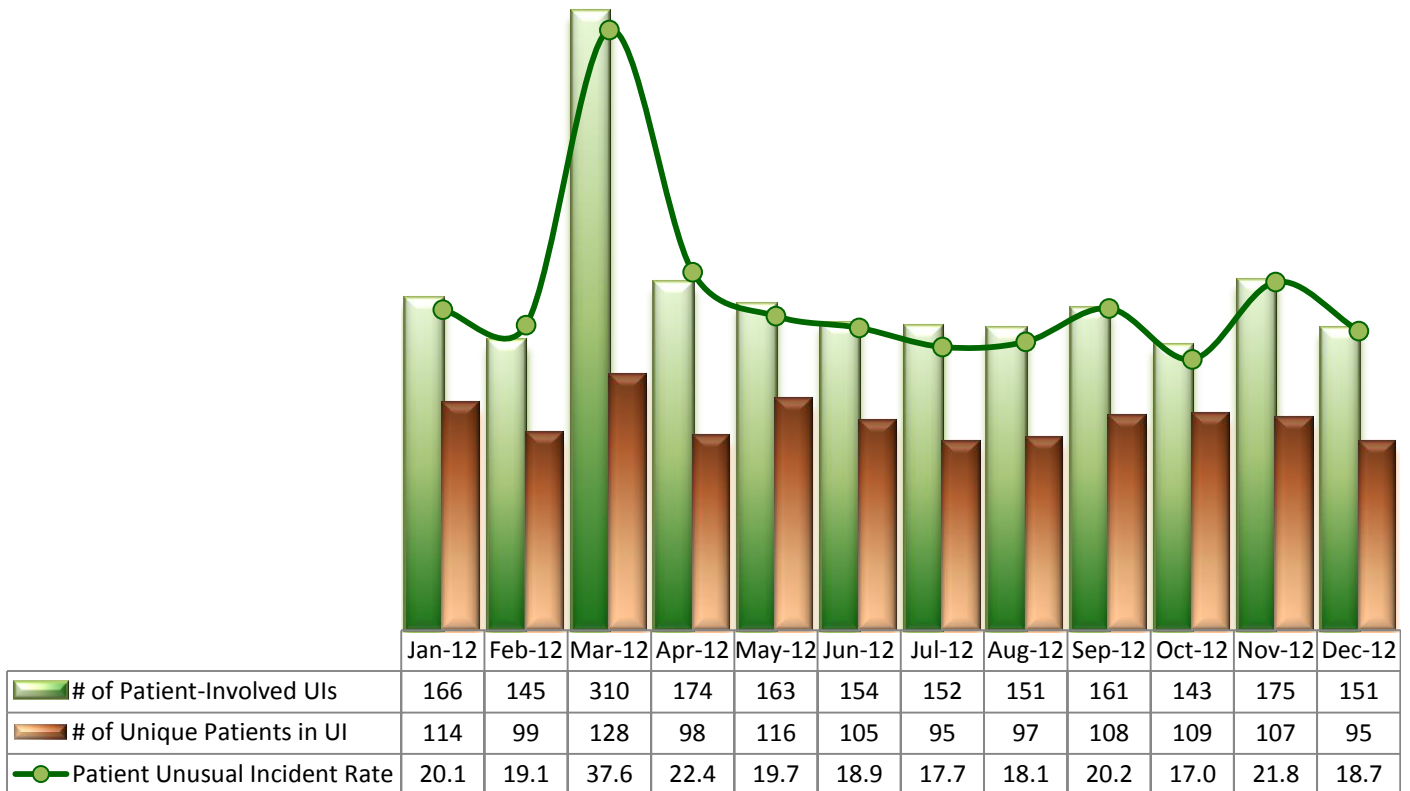


\* Numbers above represent all types of the unusual incidents (UIs) that were reported to the Risk Manager by PRISM publication date, including those that did not involve any patients.

## 7. Unusual Incidents by Severity

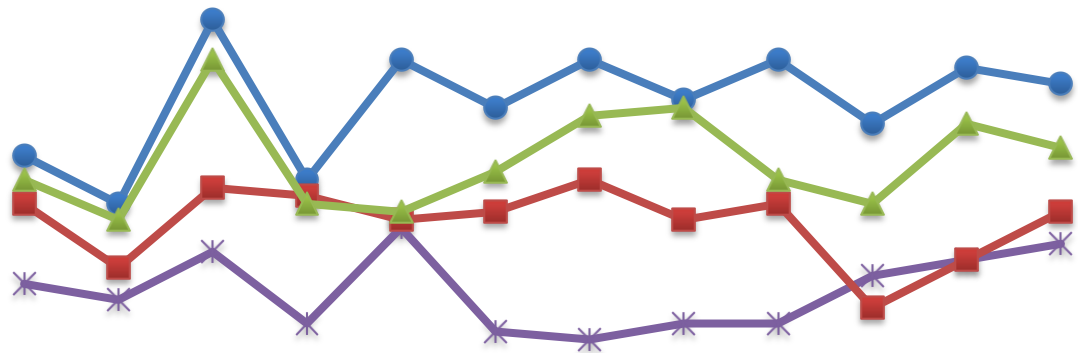


## 8. Patient-Involved Unusual Incidents



\*The total number of patient-involved UIs counts only those incidents that involved at least one or more patients. Some patients may be involved in more than one incident and the number of unique patients does not double count them. The patient UI rate is the number of patient-involved unusual incidents reported for every 1000 inpatient days.

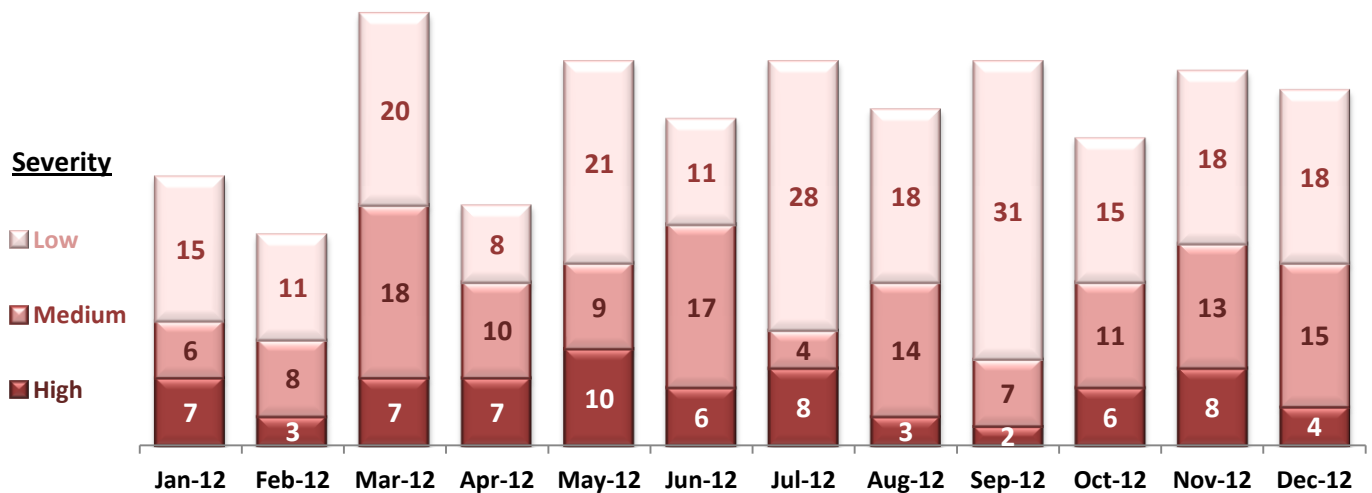
## 9. Selected Types of Incidents



	Jan-12	Feb-12	Mar-12	Apr-12	May-12	Jun-12	Jul-12	Aug-12	Sep-12	Oct-12	Nov-12	Dec-12
Physical Assault	28	22	45	25	40	34	40	35	40	32	39	37
Psych Emergency	12	10	16	7	19	6	5	7	7	13	15	17
Fall	22	14	24	23	20	21	25	20	22	9	15	21
Injury	25	20	40	22	21	26	33	34	25	22	32	29

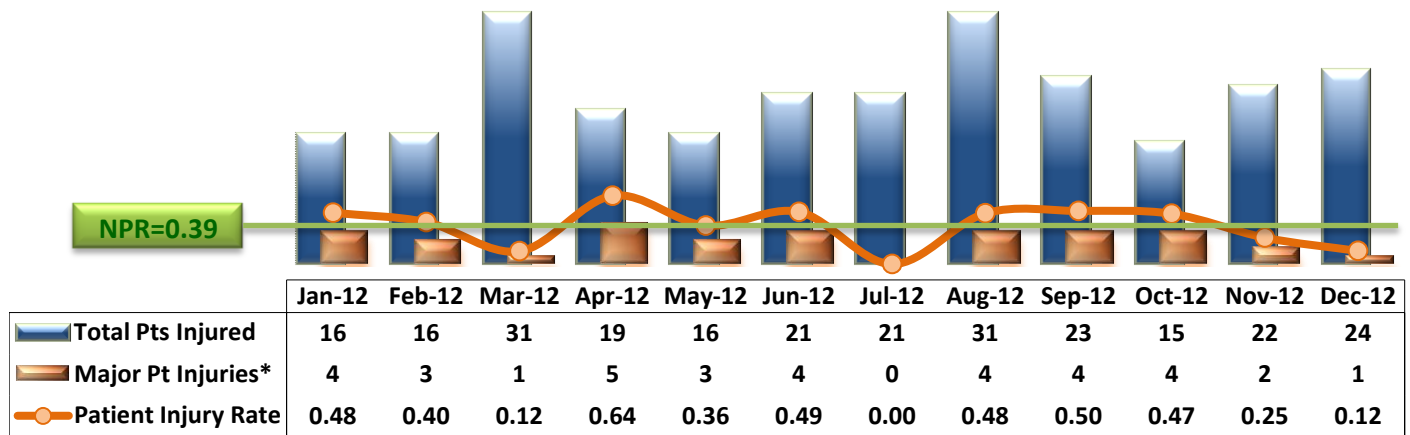
\* These are incident types that are frequently reported. Some incidents may be counted in multiple categories. For example, a physical assault incident that accompanied psychiatric emergency and injury is counted under psychiatric emergency and injury as well as under physical assault. Injury is broadly defined to include any type of injuries regardless of the cause or severity level.

## 10. Physical Assaults by Severity



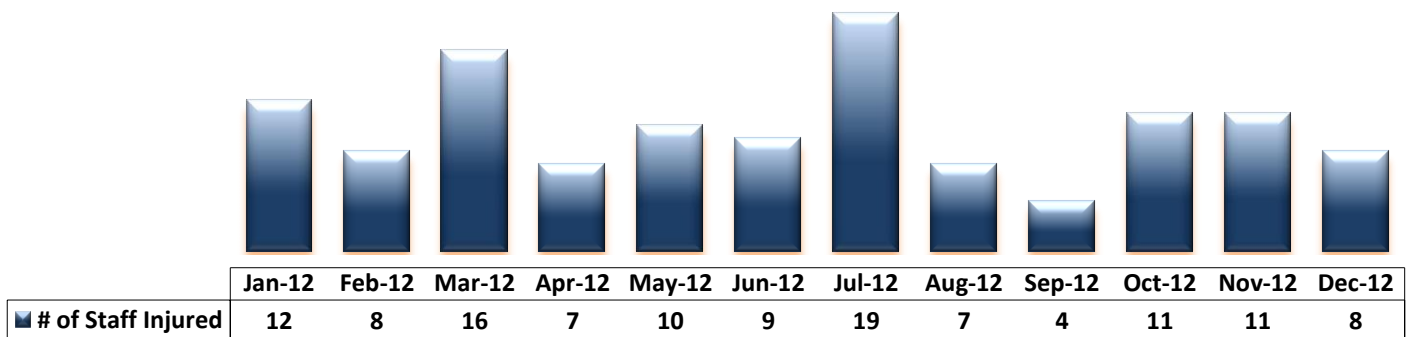
\* Any physical assault that accompanies a code 13 or results in extensive injury needing off-unit treatment or transfer to ER is considered to be high severity, any physical assault that causes a minor injury that can be treated on unit is considered to be medium severity, and physical assault events that result in no injury are considered to be low severity.

## 11. Patient Injuries



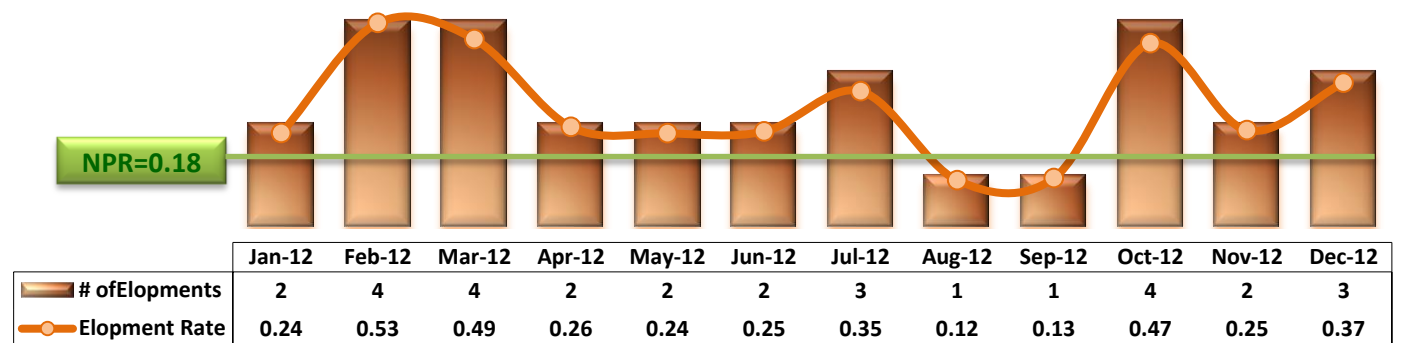
\* Injury is broadly defined to include any type of injuries regardless of the cause or severity level. The total number of patients injured represents all of the reported injuries including minor injuries treated with first aid alone. However, the patient injury rate considers only the number of patient injuries that required beyond first-aid level treatment based on the NRI definition and the patient injury rate is the number of 'major' patient injuries per every 1000 inpatient days

## 12. Staff Injuries



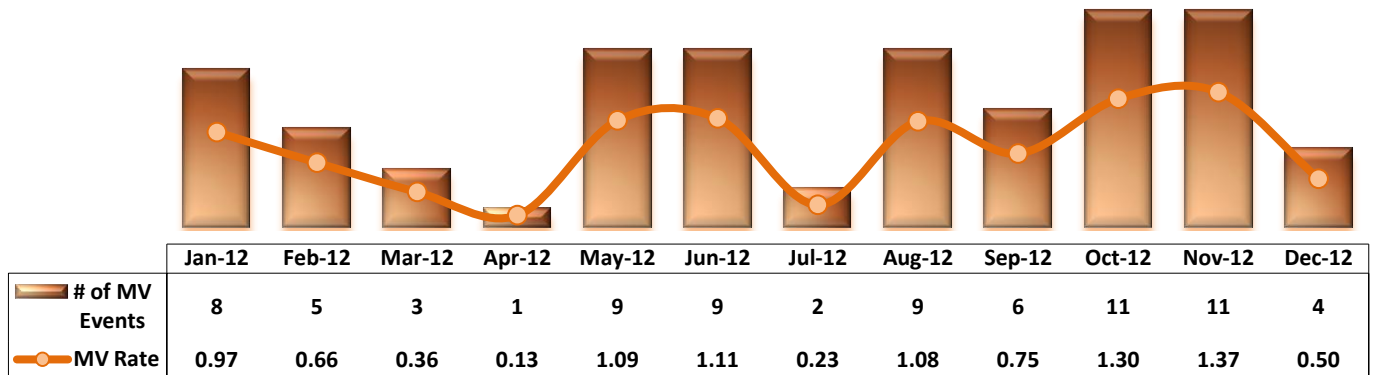
\* Injury is broadly defined to include any type of injuries regardless of the cause or severity level. The total number of staff injured represents all of the reported staff injuries including minor injuries treated with first aid alone.

## 13. Elopements



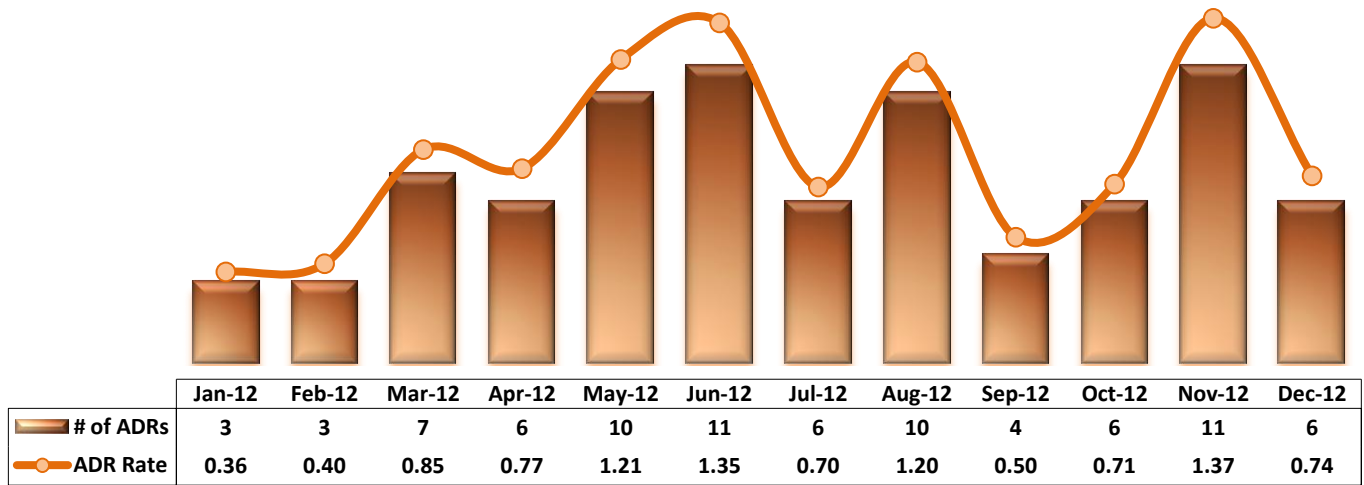
\* It counts the total number of unauthorized leaves for any duration that were initiated during month and were recorded in Avatar. The elopement rate is the number of those unauthorized leaves that occurred for every 1000 inpatient days.

### 14. Reported Medication Variance Events



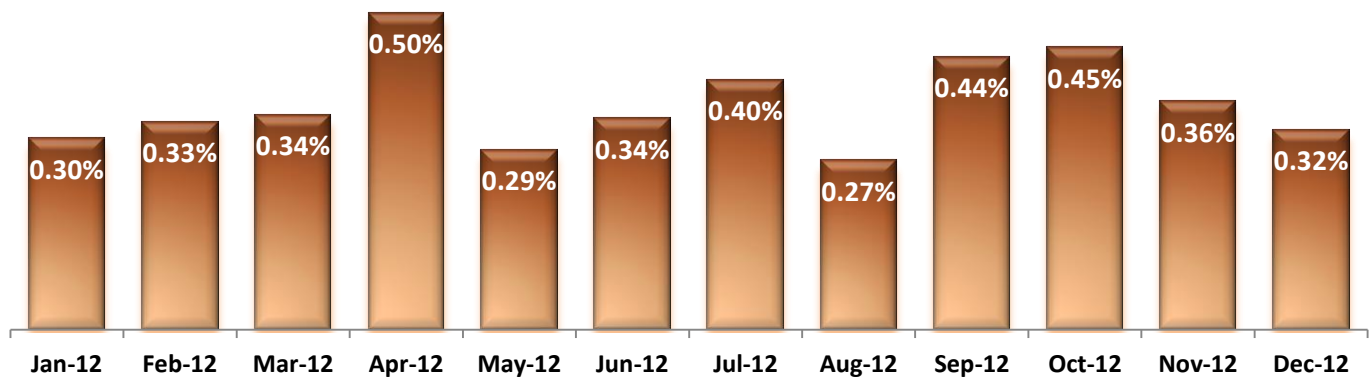
\* MV Rate: Number of reported medication variance events that occurred for every 1000 inpatient days.

### 15. Reported Adverse Drug Reactions

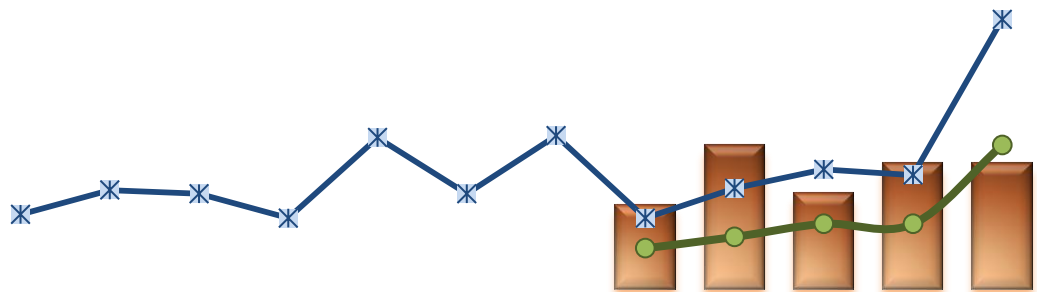


\* ADR Rate: Number of reported adverse drug reaction events that occurred for every 1000 inpatient days.

### 16. Percent of Missing Documentation on Med-Administration



### 17. Number of STAT Events and Individuals Involved

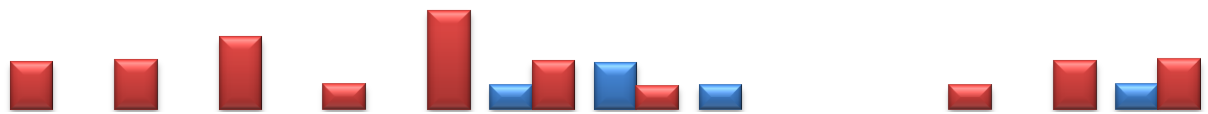


	Jan-12	Feb-12	Mar-12	Apr-12	May-12	Jun-12	Jul-12	Aug-12	Sep-12	Oct-12	Nov-12	Dec-12
Individuals w/ >=1 STAT								14	24	16	21	21
Total STAT Events								22	28	35	35	77
Total STAT Orders	40	53	51	38	81	51	82	38	54	64	61	144

### 18. Percent of Patients Restrained or Secluded

NPR(R)=5.3%

NPR(S)=2.2%



	Jan-12	Feb-12	Mar-12	Apr-12	May-12	Jun-12	Jul-12	Aug-12	Sep-12	Oct-12	Nov-12	Dec-12
Restraint	0.0%	0.0%	0.0%	0.0%	0.0%	0.3%	0.6%	0.3%	0.0%	0.0%	0.0%	0.3%
Seclusion	0.6%	0.7%	1.0%	0.3%	1.3%	0.7%	0.3%	0.0%	0.0%	0.3%	0.7%	0.7%

\* Percent of unique patients who were restrained at least once and percent of unique patients who were secluded at least once. The denominator includes all individuals who were served in care >=1 day during month.

### 19. Restraint Hours Rate & Seclusion Hours Rate

NPR(R)=0.46

NPR(S)=0.41



	Jan-12	Feb-12	Mar-12	Apr-12	May-12	Jun-12	Jul-12	Aug-12	Sep-12	Oct-12	Nov-12	Dec-12
Restraint	0.000	0.000	0.000	0.000	0.000	0.005	0.001	0.010	0.000	0.000	0.000	0.002
Seclusion	0.016	0.016	0.019	0.004	0.031	0.057	0.005	0.000	0.000	0.038	0.016	0.049

\* Restraint/Seclusion Hours Rate: Number of hours spent in restraint/seclusion for every 1000 inpatient hours.



## Performance Related Information for Staff &amp; Managers

## 1. Census, Admissions, Discharges &amp; Transfers

Data Source: Avatar

Updated as of 01/08/12

Category	Jan-12	Feb-12	Mar-12	Apr-12	May-12	Jun-12	Jul-12	Aug-12	Sep-12	Oct-12	Nov-12	Dec-12	Monthly Average	Total (12mths)	Figure	
Admissions	Civil	13	18	14	13	13	12	16	12	15	12	18	14	14	170	Figure 1
	Forensic	16	17	23	16	22	22	18	14	19	19	18	11	18	215	
	<b>Total</b>	<b>29</b>	<b>35</b>	<b>37</b>	<b>29</b>	<b>35</b>	<b>34</b>	<b>34</b>	<b>26</b>	<b>34</b>	<b>31</b>	<b>36</b>	<b>25</b>	<b>32</b>	<b>385</b>	
Discharges	Civil	15	14	17	18	12	11	17	21	9	9	20	16	15	179	Figure 2
	Forensic	33	14	21	16	15	14	16	18	16	26	19	22	19	230	
	<b>Total</b>	<b>48</b>	<b>28</b>	<b>38</b>	<b>34</b>	<b>27</b>	<b>25</b>	<b>33</b>	<b>39</b>	<b>25</b>	<b>35</b>	<b>39</b>	<b>38</b>	<b>34</b>	<b>409</b>	
Net Gain During Month	Civil	-2	4	-3	-5	1	1	-1	-9	6	3	-2	-2		-9	
	Forensic	-17	3	2	0	7	8	2	-4	3	-7	-1	-11		-15	
	<b>Total</b>	<b>-19</b>	<b>7</b>	<b>-1</b>	<b>-5</b>	<b>8</b>	<b>9</b>	<b>1</b>	<b>-13</b>	<b>9</b>	<b>-4</b>	<b>-3</b>	<b>-13</b>		<b>-24</b>	
All Individuals on Roll at End of Month	<b>264</b>	<b>271</b>	<b>270</b>	<b>265</b>	<b>273</b>	<b>282</b>	<b>283</b>	<b>270</b>	<b>279</b>	<b>275</b>	<b>272</b>	<b>259</b>	<b>272</b>			
a. Present on Unit	259	266	262	260	267	275	277	259	275	270	270	255	266			
b. On AL	3	3	6	3	5	5	4	10	4	5	2	4	5			
c. On UL	2	2	2	2	1	2	2	1	0	0	0	0	1			
All Individuals on Roll: Daily Average during Month	<b>275</b>	<b>269</b>	<b>273</b>	<b>265</b>	<b>271</b>	<b>278</b>	<b>282</b>	<b>276</b>	<b>273</b>	<b>278</b>	<b>272</b>	<b>264</b>	<b>273</b>			
a. Present on Unit*	<b>267</b>	<b>262</b>	<b>266</b>	<b>259</b>	<b>267</b>	<b>271</b>	<b>276</b>	<b>270</b>	<b>266</b>	<b>272</b>	<b>267</b>	<b>260</b>	<b>267</b>		Figure 3	
b. On AL	6	5	5	4	2	5	4	5	7	6	5	3	5			
c. On UL	2	2	2	2	2	2	2	1	0	0	0	1	1			
Patient Days*	<b>8268</b>	<b>7588</b>	<b>8246</b>	<b>7759</b>	<b>8284</b>	<b>8132</b>	<b>8568</b>	<b>8358</b>	<b>7988</b>	<b>8430</b>	<b>8024</b>	<b>8059</b>	<b>8142</b>	<b>97704</b>		
Inter-Unit Transfers during Month	<b>5</b>	<b>5</b>	<b>6</b>	<b>4</b>	<b>7</b>	<b>6</b>	<b>3</b>	<b>5</b>	<b>10</b>	<b>7</b>	<b>11</b>	<b>7</b>	<b>6</b>	<b>76</b>	Figure 4	
Medical Leaves Initiated during Month	19	19	28	23	18	29	17	21	24	29	17	9	21	253		
Emergency	10	17	29	29	34	46	43	16	33	16	24	30	27	327		
Non-Emer																
<b>Total</b>	<b>29</b>	<b>36</b>	<b>57</b>	<b>52</b>	<b>52</b>	<b>75</b>	<b>60</b>	<b>37</b>	<b>57</b>	<b>45</b>	<b>41</b>	<b>39</b>	<b>48</b>	<b>580</b>		
Non-Medical Leaves Initiated during Month	<b>91</b>	<b>74</b>	<b>99</b>	<b>105</b>	<b>145</b>	<b>142</b>	<b>126</b>	<b>95</b>	<b>103</b>	<b>95</b>	<b>104</b>	<b>96</b>	<b>106</b>	<b>1275</b>		
UL Initiated during Month	<b>2</b>	<b>4</b>	<b>4</b>	<b>2</b>	<b>2</b>	<b>2</b>	<b>3</b>	<b>1</b>	<b>1</b>	<b>4</b>	<b>2</b>	<b>3</b>	<b>3</b>	<b>30</b>		
Total Unique Patients Served during Month	<b>311</b>	<b>298</b>	<b>306</b>	<b>300</b>	<b>298</b>	<b>306</b>	<b>316</b>	<b>309</b>	<b>302</b>	<b>310</b>	<b>306</b>	<b>297</b>	<b>305</b>			
30 Day Readmission **	Civil	1	1	1	1	2	0	0	1	2	0	2		1	11	
	Forensic	1	1	1	0	0	0	1	0	0	1	0		0	5	
	<b>Total</b>	<b>2</b>	<b>2</b>	<b>2</b>	<b>1</b>	<b>2</b>	<b>0</b>	<b>1</b>	<b>1</b>	<b>2</b>	<b>1</b>	<b>2</b>		<b>1</b>	<b>16</b>	

\* Counts the number of patients who are present on the unit and excludes those on authorized or unauthorized leave at 11:59pm on a given day.

\*\* Number of patients returning within 30 days of discharges that occurred during month.

## Performance Related Information for Staff &amp; Managers

## 2. Key Performance Indicators

Data Source: UI DB, ADR DB, Restraint/Seclusion Log, and Avatar

Updated as of 01/08/12

Category	Jan-12	Feb-12	Mar-12	Apr-12	May-12	Jun-12	Jul-12	Aug-12	Sep-12	Oct-12	Nov-12	Dec-12	Monthly Average	NPR* (Sep-11)	Figure
30 Day Readmit (Discharge Cohort)**	Civil	6.7%	7.1%	5.9%	5.6%	16.7%	0.0%	0.0%	4.8%	22.2%	0.0%	10.0%	6.7%		Figure 5
	Forensic	3.0%	7.1%	4.8%	0.0%	0.0%	0.0%	6.3%	0.0%	0.0%	3.8%	0.0%	2.4%		
	Combined	4.2%	7.1%	5.3%	2.9%	7.4%	0.0%	3.0%	2.6%	8.0%	2.9%	5.1%	4.3%	7.5%	
Number of Unusual Incidents	180	155	323	186	177	157	165	158	175	159	182	171	182		Figure 6
UI by Severity	Catastrophe	0	0	0	0	0	0	0	0	0	0	0			Figure 7
	High	32	25	44	31	29	35	30	16	13	24	26	27		
	Medium	85	81	163	101	67	51	28	40	54	58	63	71		
	Low	63	49	116	54	81	71	107	102	108	77	93	85		
Patient Unusual Incident Rate	20.1	19.1	37.6	22.4	19.7	18.9	17.7	18.1	20.2	17.0	21.8	18.7	20.9		Figure 8
Selected Types of Incidents	Physical Assault	28	22	45	25	40	34	40	35	40	32	39	37	35	Figure 9
	Psych Emergency	12	10	16	7	19	6	5	7	7	13	15	17	11	
	Fall	22	14	24	23	20	21	25	20	22	9	15	21	20	
	Injury	25	20	40	22	21	26	33	34	25	22	32	29	27	
Physical Assaults by Severity	High	7	3	7	7	10	6	8	3	2	6	8	4	6	Figure 10
	Medium	6	8	18	10	9	17	4	14	7	11	13	15	11	
	Low	15	11	20	8	21	11	28	18	31	15	18	18	18	
Patient Injury Rate***	0.48	0.40	0.12	0.64	0.36	0.49	0.00	0.48	0.50	0.47	0.25	0.12	0.36	0.39	Figure 11
Patients with Major Injuries***	4	3	1	5	3	4	0	4	4	4	2	1	3		
Total Patients Injured***	16	16	31	19	16	21	21	31	23	15	22	24	21		
Total Staff Injured***	12	8	16	7	10	9	19	7	4	11	11	8	10		Figure 12
Elopement Rate	0.24	0.53	0.49	0.26	0.24	0.25	0.35	0.12	0.13	0.47	0.25	0.37	0.42	0.18	Figure 13
Medication Variance Rate	0.97	0.66	0.36	0.13	1.09	1.11	0.23	1.08	0.75	1.30	1.37	0.50	0.80		Figure 14
Adverse Drug Reaction Rate	0.36	0.40	0.85	0.77	1.21	1.35	0.70	1.20	0.50	0.71	1.37	0.74	0.85		Figure 15
Missing Med-Admin Documentation	0.30%	0.33%	0.34%	0.50%	0.29%	0.34%	0.40%	0.27%	0.44%	0.45%	0.36%	0.32%	0.36%		Figure 16
Percent of Patients Restrained	0.0%	0.0%	0.0%	0.0%	0.0%	0.3%	0.6%	0.3%	0.0%	0.0%	0.0%	0.3%	0.1%	5.3%	Figure 17
Percent of Patients Secluded	0.6%	0.7%	1.0%	0.3%	1.3%	0.7%	0.3%	0.0%	0.0%	0.3%	0.7%	0.7%	0.5%	2.2%	
Restraint Hours Rate	0.000	0.000	0.000	0.000	0.000	0.005	0.001	0.010	0.000	0.000	0.000	0.002	0.002	0.46	Figure 18
Seclusion Hours Rate	0.016	0.016	0.019	0.004	0.031	0.057	0.005	0.000	0.000	0.038	0.016	0.049	0.021	0.41	

\* National Public Rate, NASMHPD Research Institute, National Research Institute (NRI), 2012

\*\* Percentage of patients returning within 30 days of discharges that occurred during month

\*\*\* Refer to the next page [UI &amp; Medication]

\*\*\*\* As of September 2012, we are temporarily removing the emergency involuntary medication administration data from PRISM because we discovered a technical glitch in Avatar that made this data inaccurate. A fix is under way and this indicator will be reported again as reliable data becomes available.

## Performance Related Information for Staff &amp; Managers

## 3. Unusual Incident &amp; Medication

Data Source: UI DB, ADR DB, and Avatar

Updated as of 01/08/12

Category	Jan-12	Feb-12	Mar-12	Apr-12	May-12	Jun-12	Jul-12	Aug-12	Sep-12	Oct-12	Nov-12	Dec-12	Monthly Average	Total (12mths)	NPR* (Sep-11)
<b>Total Unusual Incidents**</b>	<b>180</b>	<b>155</b>	<b>323</b>	<b>186</b>	<b>177</b>	<b>157</b>	<b>165</b>	<b>158</b>	<b>175</b>	<b>159</b>	<b>182</b>	<b>171</b>	<b>182</b>	<b>2188</b>	
<b>Total Major Unusual Incidents</b>	<b>124</b>	<b>100</b>	<b>165</b>	<b>108</b>	<b>120</b>	<b>98</b>	<b>85</b>	<b>68</b>	<b>70</b>	<b>97</b>	<b>121</b>	<b>128</b>	<b>107</b>	<b>1284</b>	
<b>Patient Involved UI Only**</b>	<b>166</b>	<b>145</b>	<b>310</b>	<b>174</b>	<b>163</b>	<b>154</b>	<b>152</b>	<b>151</b>	<b>161</b>	<b>143</b>	<b>175</b>	<b>151</b>	<b>170</b>	<b>2045</b>	
<i>Patient UI Rate</i>	<i>20.1</i>	<i>19.1</i>	<i>37.6</i>	<i>22.4</i>	<i>19.7</i>	<i>18.9</i>	<i>17.7</i>	<i>18.1</i>	<i>20.2</i>	<i>17.0</i>	<i>21.8</i>	<i>18.7</i>	<i>20.9</i>		
<b>Unique Patients Involved in UI**</b>	<b>114</b>	<b>99</b>	<b>128</b>	<b>98</b>	<b>116</b>	<b>105</b>	<b>95</b>	<b>97</b>	<b>108</b>	<b>109</b>	<b>107</b>	<b>95</b>	<b>106</b>	<b>1271</b>	
<b>Selected Types of Incidents</b>															
Physical Assault	28	22	45	25	40	34	40	35	40	32	39	37	35	417	
Psych Emergency	12	10	16	7	19	6	5	7	7	13	15	17	11	134	
Fall	22	14	24	23	20	21	25	20	22	9	15	21	20	236	
Injury	25	20	40	22	21	26	33	34	25	22	32	29	27	329	
<b>UI by Severity</b>															
Catastrophe	0	0	0	0	0	0	0	0	0	0	0	0	0	0	
High	32	25	44	31	29	35	30	16	13	24	26	18	27	323	
Medium	85	81	163	101	67	51	28	40	54	58	63	59	71	850	
Low	63	49	116	54	81	71	107	102	108	77	93	94	85	1015	
<b>Physical Assaults by Severity</b>															
High	7	3	7	7	10	6	8	3	2	6	8	4	6	71	
Medium	6	8	18	10	9	17	4	14	7	11	13	15	11	132	
Low	15	11	20	8	21	11	28	18	31	15	18	18	18	214	
<b>Total Patients Injured***</b>	<b>16</b>	<b>16</b>	<b>31</b>	<b>19</b>	<b>16</b>	<b>21</b>	<b>21</b>	<b>31</b>	<b>23</b>	<b>15</b>	<b>22</b>	<b>24</b>	<b>21</b>	<b>255</b>	
<b>Patients with Major Injuries***</b>	<b>4</b>	<b>3</b>	<b>1</b>	<b>5</b>	<b>3</b>	<b>4</b>	<b>0</b>	<b>4</b>	<b>4</b>	<b>4</b>	<b>2</b>	<b>1</b>	<b>3</b>	<b>35</b>	
<i>Patient Injury Rate***</i>	<i>0.48</i>	<i>0.40</i>	<i>0.12</i>	<i>0.64</i>	<i>0.36</i>	<i>0.49</i>	<i>0.00</i>	<i>0.48</i>	<i>0.50</i>	<i>0.47</i>	<i>0.25</i>	<i>0.12</i>	<i>0.36</i>		<i>0.39</i>
<b>Total Staff Injured**</b>	<b>12</b>	<b>8</b>	<b>16</b>	<b>7</b>	<b>10</b>	<b>9</b>	<b>19</b>	<b>7</b>	<b>4</b>	<b>11</b>	<b>11</b>	<b>8</b>	<b>10</b>		
<b>Total UL Incident Reports</b>	<b>2</b>	<b>5</b>	<b>5</b>	<b>2</b>	<b>3</b>	<b>4</b>	<b>3</b>	<b>4</b>	<b>3</b>	<b>3</b>	<b>2</b>	<b>5</b>	<b>3</b>	<b>41</b>	
<b>Total ULs Documented in Avatar</b>	<b>2</b>	<b>4</b>	<b>4</b>	<b>2</b>	<b>2</b>	<b>2</b>	<b>3</b>	<b>1</b>	<b>1</b>	<b>4</b>	<b>2</b>	<b>3</b>	<b>3</b>		
<i>Elopement Rate</i>	<i>0.24</i>	<i>0.53</i>	<i>0.49</i>	<i>0.26</i>	<i>0.24</i>	<i>0.25</i>	<i>0.35</i>	<i>0.12</i>	<i>0.13</i>	<i>0.47</i>	<i>0.25</i>	<i>0.37</i>	<i>0.42</i>		<i>0.18</i>
<b>Med Variance (MV) Reports**</b>	<b>8</b>	<b>5</b>	<b>3</b>	<b>1</b>	<b>9</b>	<b>9</b>	<b>2</b>	<b>9</b>	<b>6</b>	<b>11</b>	<b>11</b>	<b>4</b>	<b>7</b>	<b>78</b>	
<i>MV Rate</i>	<i>0.97</i>	<i>0.66</i>	<i>0.36</i>	<i>0.13</i>	<i>1.09</i>	<i>1.11</i>	<i>0.23</i>	<i>1.08</i>	<i>0.75</i>	<i>1.30</i>	<i>1.37</i>	<i>0.50</i>	<i>0.80</i>		
<b>Adverse Drug Reactions Reports</b>	<b>3</b>	<b>3</b>	<b>7</b>	<b>6</b>	<b>10</b>	<b>11</b>	<b>6</b>	<b>10</b>	<b>4</b>	<b>6</b>	<b>11</b>	<b>6</b>	<b>7</b>	<b>83</b>	
<i>ADR Rate</i>	<i>0.36</i>	<i>0.40</i>	<i>0.85</i>	<i>0.77</i>	<i>1.21</i>	<i>1.35</i>	<i>0.70</i>	<i>1.20</i>	<i>0.50</i>	<i>0.71</i>	<i>1.37</i>	<i>0.74</i>	<i>0.85</i>		
<b>Total Med Administrations Scheduled</b>	<b>99731</b>	<b>93833</b>	<b>105273</b>	<b>101205</b>	<b>108557</b>	<b>105239</b>	<b>108563</b>	<b>107540</b>	<b>104812</b>	<b>112293</b>	<b>107901</b>	<b>111670</b>		<b>1266617</b>	
<b>Total Missing Documentations</b>	<b>304</b>	<b>311</b>	<b>360</b>	<b>511</b>	<b>311</b>	<b>354</b>	<b>433</b>	<b>290</b>	<b>456</b>	<b>505</b>	<b>393</b>	<b>356</b>		<b>4584</b>	
<i>Percent of Missing Documentation</i>	<i>0.30%</i>	<i>0.33%</i>	<i>0.34%</i>	<i>0.50%</i>	<i>0.29%</i>	<i>0.34%</i>	<i>0.40%</i>	<i>0.27%</i>	<i>0.44%</i>	<i>0.45%</i>	<i>0.36%</i>	<i>0.32%</i>		<i>0.36%</i>	
<b>Total STAT Orders</b>	<b>40</b>	<b>53</b>	<b>51</b>	<b>38</b>	<b>81</b>	<b>51</b>	<b>82</b>	<b>38</b>	<b>54</b>	<b>64</b>	<b>61</b>	<b>144</b>	<b>63</b>		
<b>Total STAT Events****</b>									<b>22</b>	<b>28</b>	<b>35</b>	<b>35</b>	<b>39</b>		
<b>Total Individuals Involved &gt;=1 STAT</b>									<b>14</b>	<b>24</b>	<b>16</b>	<b>21</b>	<b>19</b>		
<b>Total Patients with &gt;=3 STAT Events</b>									<b>3</b>	<b>0</b>	<b>3</b>	<b>2</b>	<b>3</b>		

\* National Public Rate, NASMHPD Research Institute, National Research Institute (NRI), 2012

\*\* Numbers may change if any additional UI report is made after the data run date from UI database (around the 15th of the following month).

\*\*\* Injury is broadly defined to include any type of injuries regardless of the cause or severity level. The total number of patients injured represents all of the reported injuries including minor injuries treated with first aid alone. However, the patient injury rate considers only the number of patient injuries that required beyond first-aid level treatment based on the NRI definition and the patient injury rate is the number of 'major' patient injuries per every 1000 inpatient days

\*\*\*\* One STAT event may involve more than one STAT order for the same patient. Any orders placed within 15 minute timeframe are considered to belong to one STAT event.

## Performance Related Information for Staff &amp; Managers

## 4. Restraint &amp; Seclusion

Data Source: Restraint/Seclusion Log and UI DB (for # of total events and patients) and Avatar (for patient days/hours)

Updated as of 01/08/12

Category	Jan-12	Feb-12	Mar-12	Apr-12	May-12	Jun-12	Jul-12	Aug-12	Sep-12	Oct-12	Nov-12	Dec-12	Monthly Average	Total (12mths)	NPR* (Sep-11)
Number of Restraint Events	0	0	0	0	0	1	2	1	0	0	0	1	0.4	5	
Number of Unique Patients Restrained	0	0	0	0	0	1	2	1	0	0	0	1	0.4		
Percentage of Patients Restrained	0.0%	0.0%	0.0%	0.0%	0.0%	0.3%	0.6%	0.3%	0.0%	0.0%	0.0%	0.3%	0.1%		5.3%
Total Restraint Hours (h:mm)	0:00	0:00	0:00	0:00	0:00	1:00	0:13	2:00	0:00	0:00	0:00	0:20	0:17	3:33	
Restraint Hours Rate	0.000	0.000	0.000	0.000	0.000	0.005	0.001	0.010	0.000	0.000	0.000	0.002	0.002		0.46
Number of Seclusion Events	2	2	3	1	6	3	1	0	0	5	2	5	2.5	30	
Number of Unique Patients Secluded	2	2	3	1	4	2	1	0	0	1	2	2	1.7		
Percentage of Patients Secluded	0.6%	0.7%	1.0%	0.3%	1.3%	0.7%	0.3%	0.0%	0.0%	0.3%	0.7%	0.7%	0.5%		2.2%
Total Seclusion Hours (h:mm)	3:13	3:00	3:50	0:45	6:08	11:10	1:00	0:00	0:00	7:40	3:10	9:32	4:07	49:28	
Seclusion Hours Rate	0.016	0.016	0.019	0.004	0.031	0.057	0.005	0.000	0.000	0.038	0.016	0.049	0.021		0.41

\* National Public Rate, NASMHPD Research Institute, National Research Institute (NRI), 2012

## Performance Related Information for Staff &amp; Managers

## 5. Major Incidents by Incident Location/Unit

Data Source: UI DB

Updated as of 01/08/12

Category		Jan-12	Feb-12	Mar-12	Apr-12	May-12	Jun-12	Jul-12	Aug-12	Sep-12	Oct-12	Nov-12	Dec-12	Monthly Average	Total (12mths)	Percent
<b>Total Unusual Incidents</b>		<b>180</b>	<b>155</b>	<b>323</b>	<b>186</b>	<b>177</b>	<b>157</b>	<b>165</b>	<b>158</b>	<b>175</b>	<b>159</b>	<b>182</b>	<b>171</b>	<b>182</b>	<b>2188</b>	
<b>Total Major Incidents*</b>		<b>124</b>	<b>100</b>	<b>165</b>	<b>108</b>	<b>120</b>	<b>98</b>	<b>85</b>	<b>68</b>	<b>70</b>	<b>97</b>	<b>121</b>	<b>128</b>	<b>107</b>	<b>1284</b>	<b>100%</b>
Major Incident Location	1A	13	11	17	10	17	12	4	8	2	11	4	7	10	116	9%
	1B	14	12	17	9	7	10	5	6	6	10	13	10	10	119	9%
	1C	8	3	15	11	12	5	8	6	5	8	9	11	8	101	8%
	1D	9	6	5	6	11	8	9	2	6	2	13	14	8	91	7%
	1E	8	7	14	15	11	18	10	9	7	15	8	18	12	140	11%
	1F	5	10	11	7	14	11	17	4	2	7	17	12	10	117	9%
	1G	11	8	10	21	7	8	9	8	19	12	20	9	12	142	11%
	2A	3	4	7	3	2	0	3	1	4	2	3	1	3	33	3%
	2B	3	2	1	2	1	1	1	3	0	1	7	8	3	30	2%
	2C	8	6	18	4	12	5	2	2	3	9	4	12	7	85	7%
	2D	12	8	18	5	7	10	9	7	3	6	8	10	9	103	8%
	TLC	12	14	21	6	11	4	6	8	4	6	4	9	9	105	8%
	Other	18	9	11	9	8	6	2	4	9	8	11	7	9	102	8%
<b>Total Physical Assault Incidents</b>		<b>28</b>	<b>22</b>	<b>45</b>	<b>25</b>	<b>40</b>	<b>34</b>	<b>40</b>	<b>35</b>	<b>40</b>	<b>32</b>	<b>39</b>	<b>37</b>	<b>35</b>	<b>417</b>	<b>100%</b>
Assault Incident Location	1A	1	0	1	0	7	4	2	4	4	5	1	2	3	31	7%
	1B	1	0	4	0	1	0	3	3	4	1	0	2	2	19	5%
	1C	4	0	3	3	0	1	2	1	1	2	4	1	2	22	5%
	1D	4	4	2	2	4	3	4	2	3	1	9	6	4	44	11%
	1E	0	5	7	5	5	7	8	5	3	4	2	8	5	59	14%
	1F	0	1	1	2	10	4	10	2	2	5	7	2	4	46	11%
	1G	4	4	3	4	2	4	4	6	15	4	6	2	5	58	14%
	2A	0	1	3	0	0	0	0	0	0	0	0	0	0	4	1%
	2B	0	0	0	0	0	0	1	1	0	0	2	3	1	7	2%
	2C	2	0	3	2	2	3	1	1	0	2	0	2	2	18	4%
	2D	7	4	10	3	4	8	2	7	3	5	5	8	6	66	16%
	TLC	3	3	8	3	3	0	2	3	5	2	2	1	3	35	8%
	Other	2	0	0	1	2	0	1	0	0	1	1	0	1	8	2%

## Performance Related Information for Staff &amp; Managers

## 5. Major Incidents by Incident Location/Unit

Data Source: UI DB

Updated as of 01/08/12

Category		Jan-12	Feb-12	Mar-12	Apr-12	May-12	Jun-12	Jul-12	Aug-12	Sep-12	Oct-12	Nov-12	Dec-12	Monthly Average	Total (12mths)	Percent	
<b>Total Fall Incidents</b>		<b>22</b>	<b>14</b>	<b>24</b>	<b>23</b>	<b>20</b>	<b>21</b>	<b>25</b>	<b>20</b>	<b>22</b>	<b>9</b>	<b>15</b>	<b>21</b>	<b>20</b>	<b>236</b>	<b>100%</b>	
Fall Incident Location	1A	6	3	11	6	8	9	3	4	3	1	3	4	5	61	26%	
	1B	1	3	0	3	1	4	2	5	3	2	4	6	3	34	14%	
	1C	1	1	2	1	0	0	3	1	0	1	1	1	1	12	5%	
	1D	1	0	0	1	0	0	4	0	0	1	1	1	1	9	4%	
	1E	2	1	1	4	3	5	3	1	2	0	1	1	2	24	10%	
	1F	0	0	1	0	0	0	0	0	0	0	0	1	0	2	1%	
	1G	0	0	0	1	1	0	2	3	8	1	1	0	1	17	7%	
	2A	1	0	0	0	0	0	1	0	0	0	0	2	1	0	5	2%
	2B	2	1	1	1	0	0	0	1	1	1	0	0	4	1	11	5%
	2C	2	0	3	1	3	0	0	0	0	2	1	0	1	1	13	6%
	2D	1	0	3	0	0	2	6	3	1	0	0	0	1	1	17	7%
	TLC	0	4	0	1	3	1	0	2	0	0	0	1	0	1	12	5%
	Other	5	1	2	4	1	0	1	0	0	2	2	0	1	2	19	8%
<b>Total Injury Incidents</b>		<b>25</b>	<b>20</b>	<b>40</b>	<b>22</b>	<b>21</b>	<b>26</b>	<b>33</b>	<b>34</b>	<b>25</b>	<b>22</b>	<b>32</b>	<b>29</b>	<b>27</b>	<b>329</b>	<b>100%</b>	
Injury Incident Location	1A	2	3	2	1	3	5	1	4	2	4	0	2	2	29	9%	
	1B	2	0	4	2	1	2	4	3	1	2	3	3	2	27	8%	
	1C	2	0	2	1	0	0	3	1	0	2	2	1	1	14	4%	
	1D	2	3	2	3	3	3	6	1	0	1	6	6	3	36	11%	
	1E	1	2	5	2	2	3	2	4	3	2	1	2	2	29	9%	
	1F	4	1	1	2	4	2	4	1	1	2	8	2	3	32	10%	
	1G	1	5	2	6	1	3	2	5	9	3	4	2	4	43	13%	
	2A	0	0	2	0	0	0	0	0	0	0	0	1	0	0	3	1%
	2B	1	0	1	0	0	0	0	1	0	0	0	0	2	0	5	2%
	2C	1	1	3	1	0	1	4	1	2	1	3	2	2	20	6%	
	2D	2	0	7	0	3	5	4	7	2	1	2	3	3	36	11%	
	TLC	0	4	5	1	2	0	2	5	2	2	2	2	2	27	8%	
	Other	7	1	4	3	2	2	1	1	3	2	0	2	2	28	9%	

\* Not every incident is a major incident. This counts only those incidents that were classified to be major based on the policy.

## Performance Related Information for Staff &amp; Managers

## 6. Demographic Information of Individuals in Care

Data Source: Avatar

Updated as of 01/08/12

Category	Sub-group	Jan-12	Feb-12	Mar-12	Apr-12	May-12	Jun-12	Jul-12	Aug-12	Sep-12	Oct-12	Nov-12	Dec-12	Monthly Average	Percent*
<b>Total Active (on Roll) at End of Month*</b>		<b>264</b>	<b>271</b>	<b>270</b>	<b>265</b>	<b>273</b>	<b>282</b>	<b>283</b>	<b>270</b>	<b>279</b>	<b>275</b>	<b>272</b>	<b>259</b>	<b>272</b>	
<b>Gender</b>	Female	60	68	71	66	71	73	70	64	71	74	72	70	<b>69</b>	<b>25.4%</b>
	Male	204	203	199	199	202	209	213	206	208	201	200	189	<b>203</b>	<b>74.6%</b>
<b>Age</b>	<b>Median Age (Years)</b>	<b>55 yrs</b>	<b>55 yrs</b>	<b>55 yrs</b>	<b>55 yrs</b>	<b>55 yrs</b>	<b>55 yrs</b>	<b>55 yrs</b>	<b>55 yrs</b>	<b>55 yrs</b>	<b>55 yrs</b>	<b>55 yrs</b>	<b>56 yrs</b>	<b>55 yrs</b>	
	<30 years old	13	14	20	17	20	23	23	22	25	23	23	17	<b>20</b>	<b>7.4%</b>
	>=30 and <40 years old	29	33	33	28	36	37	33	29	28	27	27	27	<b>31</b>	<b>11.2%</b>
	>=40 and <50 years old	45	46	42	41	42	45	46	43	43	45	37	42	<b>43</b>	<b>15.8%</b>
	>=50 and <60 years old	95	96	96	99	93	92	94	89	91	88	97	84	<b>93</b>	<b>34.1%</b>
	>=60 years old	82	82	79	80	82	85	87	87	92	92	88	89	<b>85</b>	<b>31.4%</b>
<b>Legal Status of Individuals on Roll at End of Month</b>	Emergency	19	25	19	16	17	20	21	16	22	21	19	21	<b>20</b>	<b>7.2%</b>
	Inpatient Commitment	27	27	27	25	25	26	27	26	24	23	23	21	<b>25</b>	<b>9.2%</b>
	Outpatient Commitment	22	22	25	29	28	25	20	20	21	23	21	24	<b>23</b>	<b>8.6%</b>
	Voluntary	42	41	42	41	42	41	43	42	43	46	50	46	<b>43</b>	<b>15.9%</b>
	<b>Civil Sub-total</b>	<b>110</b>	<b>115</b>	<b>113</b>	<b>111</b>	<b>112</b>	<b>112</b>	<b>111</b>	<b>104</b>	<b>110</b>	<b>113</b>	<b>113</b>	<b>112</b>	<b>111</b>	<b>40.9%</b>
	DC Exam	49	50	50	45	49	57	59	56	59	55	50	39	<b>52</b>	<b>18.9%</b>
	Mentally Incompetent	3	2	4	6	7	8	8	6	5	3	3	3	<b>5</b>	<b>1.8%</b>
	NGBRI - DC	88	89	89	89	89	91	92	91	92	91	93	92	<b>91</b>	<b>33.3%</b>
	NGBRI - US	10	11	10	10	10	10	9	9	9	9	9	9	<b>10</b>	<b>3.5%</b>
	NGBRI - VI	1	1	1	1	1	1	1	1	1	1	1	1	<b>1</b>	<b>0.4%</b>
Dual Commitment	1	1	1	1	3	1	1	1	1	1	1	1	<b>1</b>	<b>0.4%</b>	
Sexual Psychopath (Miller Ac	2	2	2	2	2	2	2	2	2	2	2	2	<b>2</b>	<b>0.7%</b>	
	<b>Forensic Sub-total</b>	<b>154</b>	<b>156</b>	<b>157</b>	<b>154</b>	<b>161</b>	<b>170</b>	<b>172</b>	<b>166</b>	<b>169</b>	<b>162</b>	<b>159</b>	<b>147</b>	<b>161</b>	<b>59.1%</b>
<b>Length of Stay</b>	<b>Median LOS (Days)</b>	<b>977 d</b>	<b>950 d</b>	<b>974 d</b>	<b>1042 d</b>	<b>1004 d</b>	<b>922 d</b>	<b>890 d</b>	<b>1063 d</b>	<b>946 d</b>	<b>1027 d</b>	<b>1010 d</b>	<b>1188 d</b>	<b>999 d</b>	
	<b>Average LOS (Days)</b>	<b>3150 d</b>	<b>3089 d</b>	<b>3088 d</b>	<b>3153 d</b>	<b>3047 d</b>	<b>2971 d</b>	<b>2976 d</b>	<b>3116 d</b>	<b>3030 d</b>	<b>3093 d</b>	<b>3103 d</b>	<b>3248 d</b>	<b>3089 d</b>	
	<30 Days	27	32	32	26	30	32	32	20	32	27	32	24	<b>29</b>	<b>10.6%</b>
	>=30 ~ <365 Days	68	69	66	65	68	76	74	77	74	74	69	64	<b>70</b>	<b>25.9%</b>
	>= 1 Year & < 2 Years	22	21	23	22	24	21	23	20	21	22	21	20	<b>22</b>	<b>8.0%</b>
	>= 2 Years & < 5 Years	39	40	41	44	44	46	47	46	46	43	43	45	<b>44</b>	<b>16.1%</b>
	>= 5 Years & < 20 Years	63	64	63	62	62	62	62	61	60	62	61	61	<b>62</b>	<b>22.8%</b>
>= 20 Years	45	45	45	46	45	45	45	46	46	47	46	45	<b>46</b>	<b>16.7%</b>	

\* Counts the total number of individuals who are on the hospital roll at end of each month. This number serves as denominator to calculate percentage of each group.