

**Government of the District of Columbia
Department of Behavioral Health (DBH)**

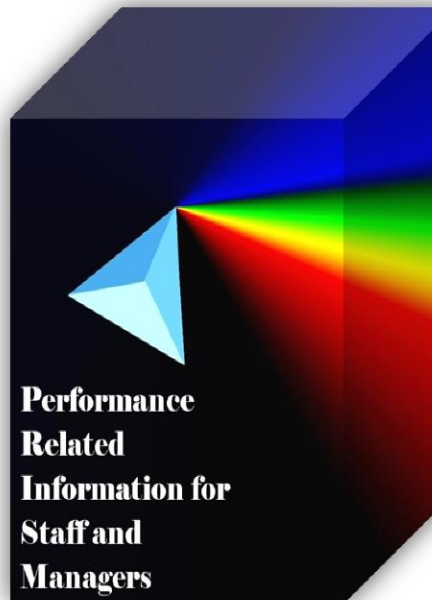


Performance Related Information for Staff and Managers

PRISM

APRIL 2014

Table of Contents



1.	Admissions to SEH	1
2.	Discharges from SEH.....	1
3.	Admissions vs. Discharges by Legal Status for the Past 12 Months	1
4.	Average Daily Census	2
5.	Transfers	2
6.	30-Day Readmission Rate	2
7.	Unusual Incidents.....	3
8.	Patient-Involved Unusual Incidents.....	3
9.	Admissions vs. Patient UI Rate	4
10.	Unusual Incidents by Severity	4
11.	Selected Types of Incidents	4
12.	Physical Assaults by Severity	5
13.	Patient Injuries	5
14.	Staff Injuries.....	5
15.	Percent of Patients Restrained or Secluded.....	6
16.	Restraint Hours Rate & Seclusion Hours Rate	6
17.	Eloperments	6
18.	Reported Medication Variance Events	7
19.	Reported Adverse Drug Reactions	7
20.	Percent of Missing Documentation on Med-Administration.....	8
21.	Number of STAT Events and Individuals Involved	8
22.	Demographics and Length of Stay	9

<input type="checkbox"/>	<i>Appendix 1) Table – Census, Admissions & Discharges</i>
<input type="checkbox"/>	<i>Appendix 2) Table – Key Performance Indicators</i>
<input type="checkbox"/>	<i>Appendix 3) Table – Unusual Incident & Medication</i>
<input type="checkbox"/>	<i>Appendix 4) Table – Restraint & Seclusion</i>
<input type="checkbox"/>	<i>Appendix 5) Table – Demographic Information of Individuals in Care</i>
<input type="checkbox"/>	<i>Appendix 6) Table – Unusual Incidents by Unit</i>

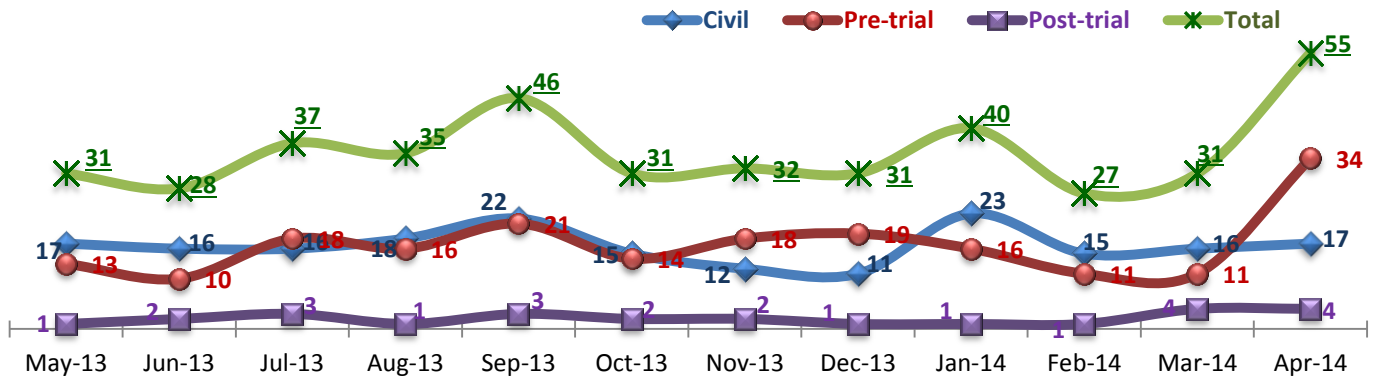
05/19/2014

Office of Statistics and Reporting (OSR)

Key Trends: Admission, Discharge, Transfer, Census, and Readmissions (1~6)

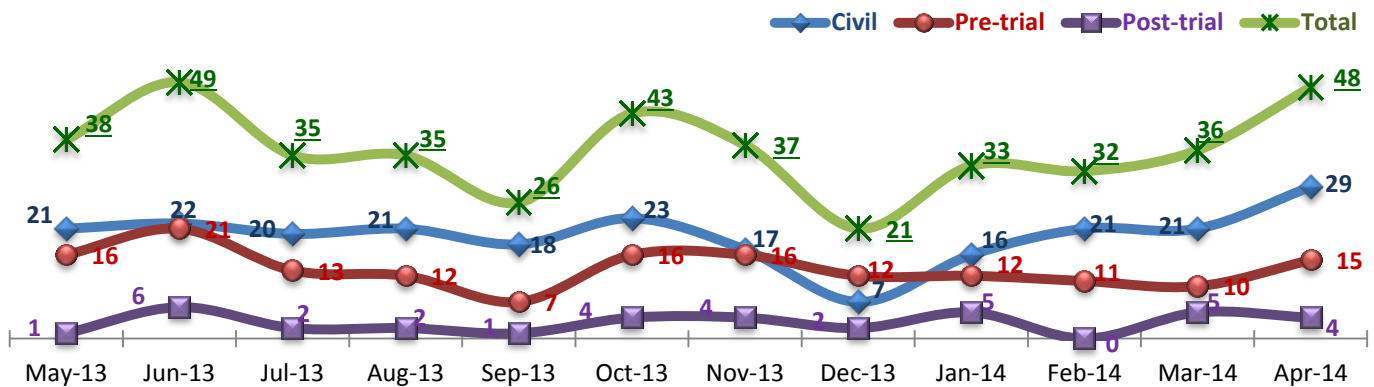
- In April 2014, admissions and discharges both increased significantly and the number of admissions far exceeded the number of discharges particularly for pre-trial population. The number of pre-trial admissions (34) is the highest ever since we started monitoring the number through PRISM first time in October 2008. Despite this increase of admissions, the average daily census in April did not rise.
- There has been no individual who was re-admitted within 30-days since December 2013. The Hospital's 30-day readmission rate for the first six months in FY14 is 1.5%, which is far below the NPR (6.9%)¹.

1. Admissions to SEH



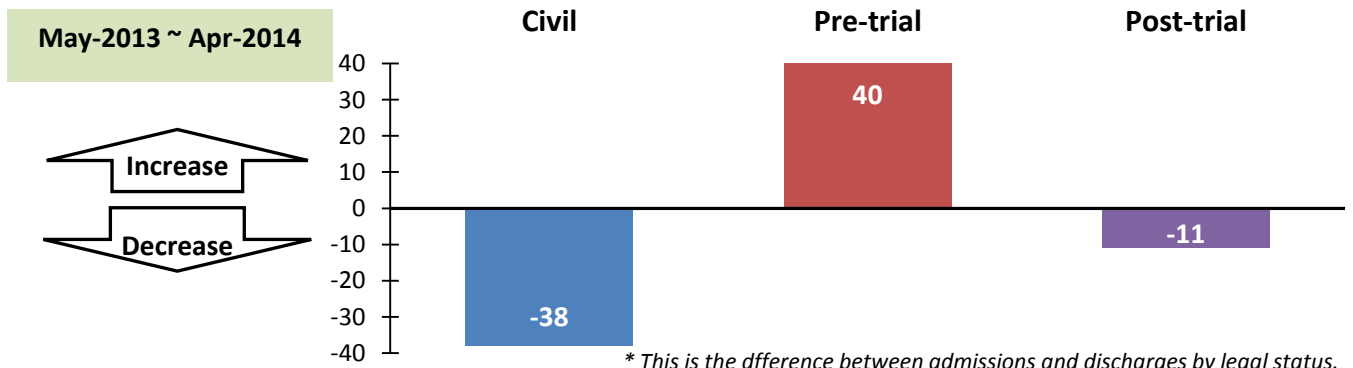
* Number of admissions to SEH inpatient program, including transfers from outpatient to inpatient program.

2. Discharges from SEH



* Number of discharges from SEH inpatient program, including transfers from inpatient to outpatient program.

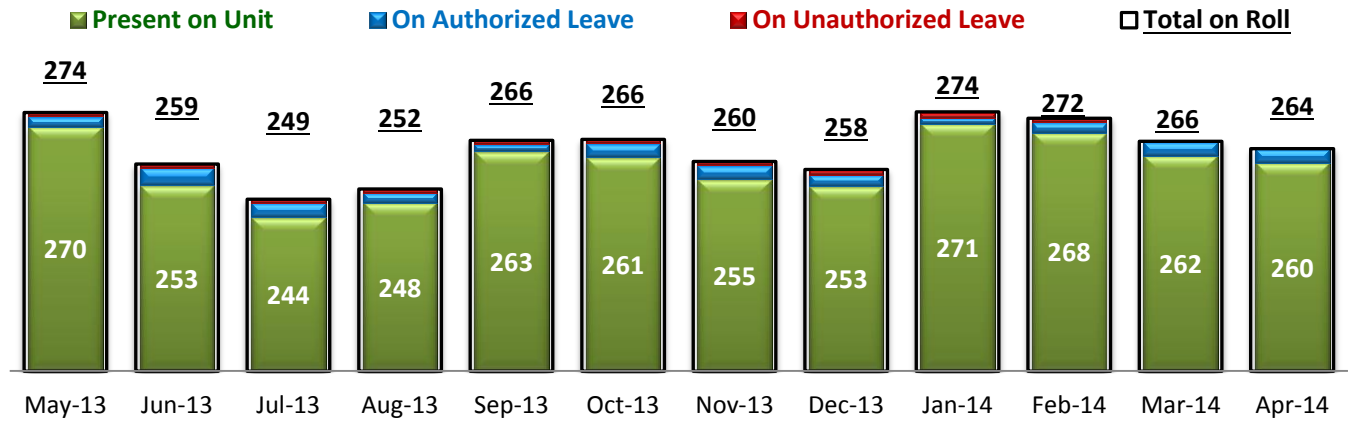
3. Admissions vs. Discharges by Legal Status for the Past 12 Months



* This is the difference between admissions and discharges by legal status.

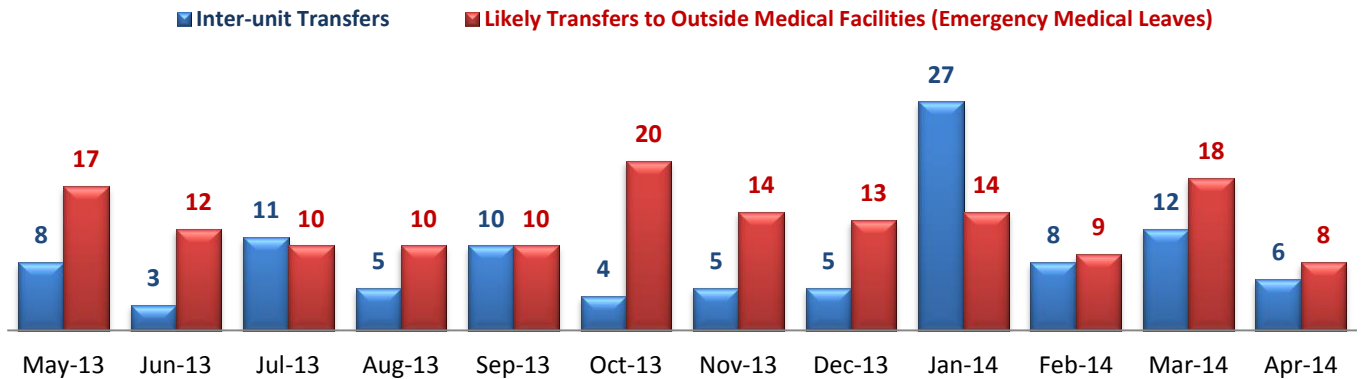
¹ NPR: National Public Rate as of June 2013 was published in November 2013 by National Association of State Mental Health Program Directors Research Institute (NRI), based on data collected from a number of state psychiatric hospitals nationwide.

4. Average Daily Census



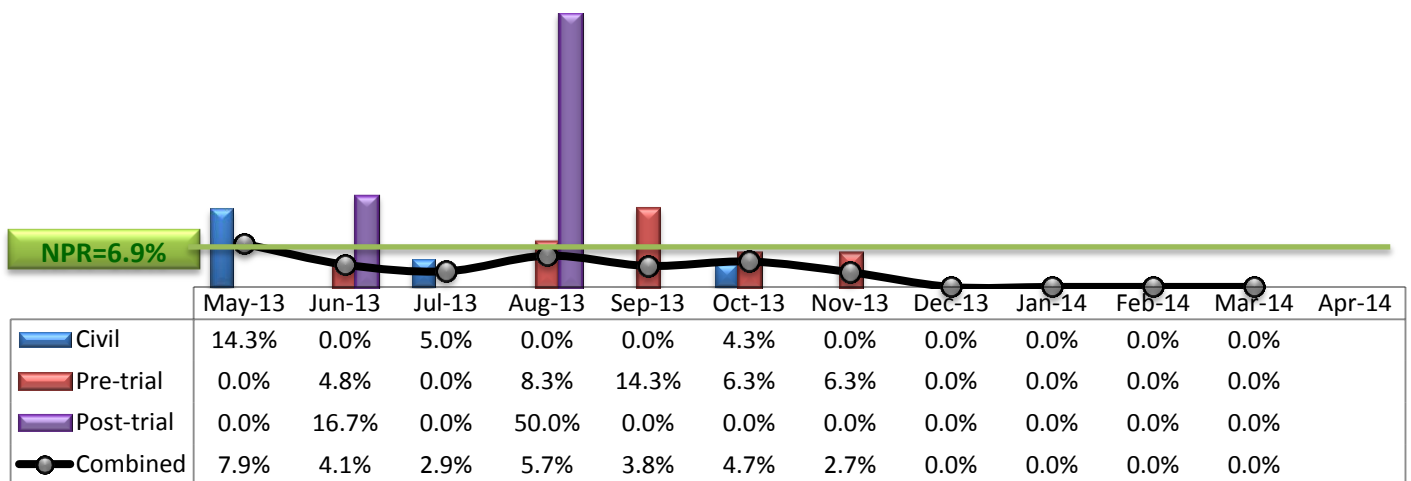
* Data above is the daily average number of individuals counted at 11:59 PM every day during each month.

5. Transfers



* Number of inter-unit transfers that occurred during month and number of emergency medical leaves that were initiated during month.

6. 30-Day Readmission Rate



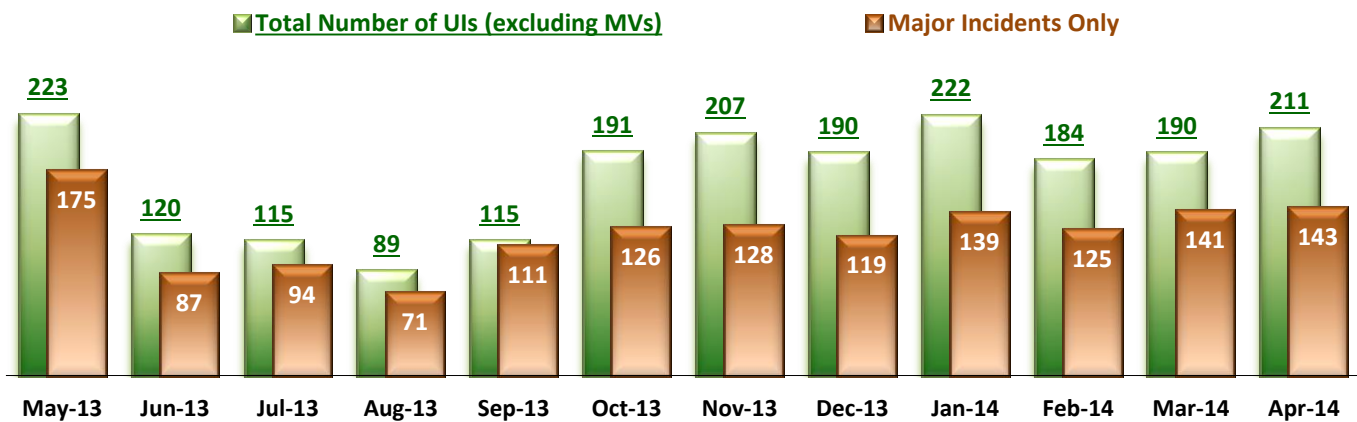
* Percent of discharges that returned to SEH within 30 days of discharges. It does not include those who may have been re-hospitalized at another psychiatric facility. This measure requires 30-day observation following discharge.

** The post-trial denominators (discharges) per month range only between one and six, making the monthly re-admission rate high when there is any. For example, in August 2013, there were two post trial discharges, of which one (50%) was readmitted within 30 days.

Key Trends: Unusual Incidents (7~17)

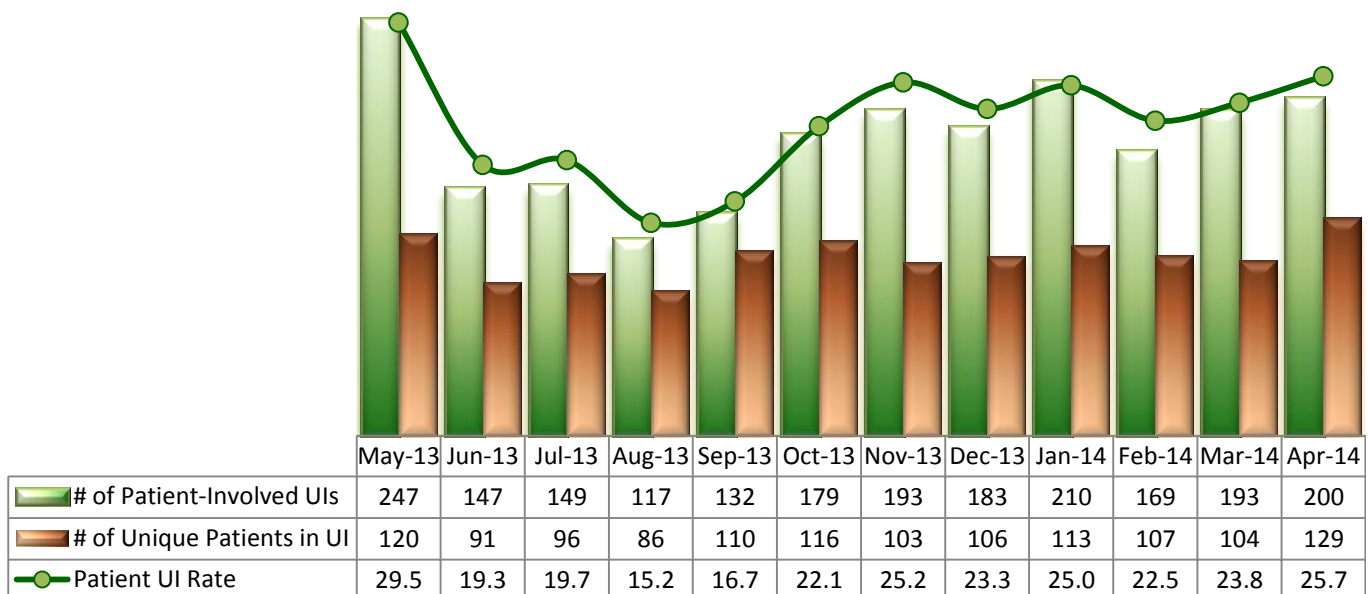
- The frequency of unusual incidents (UIs) and the patient UI rate both continued to increase in April 2014 as the number of admissions increased for two consecutive months. It is expected that this trend is likely to continue in May due to the very high number of April admissions: our prior analyses suggest that an increase of admissions is often followed by an increase of UIs, particularly violence related UIs, in subsequent months.
- Despite the increase in the number of UIs overall, the number of medium or high severity UIs noticeably decreased; only those at low severity considerably increased.
- The number of physical assaults significantly increased in April although a majority of them are low severity. The frequency of incidents involving psychiatric emergency and aggressive behaviors decreased, however.
- Patient injuries, including major injuries, increased in April 2014.
- There were no unauthorized leaves (ULs) reported for two consecutive months, March and April 2014.

7. Unusual Incidents



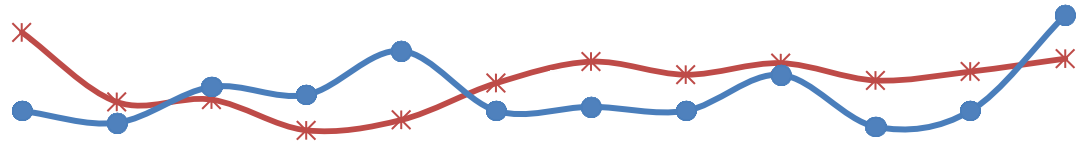
* Numbers above represent all types of the unusual incidents (UIs) that were reported to the Risk Manager by PRISM publication date, including those that did not involve any patients.

8. Patient-Involved Unusual Incidents



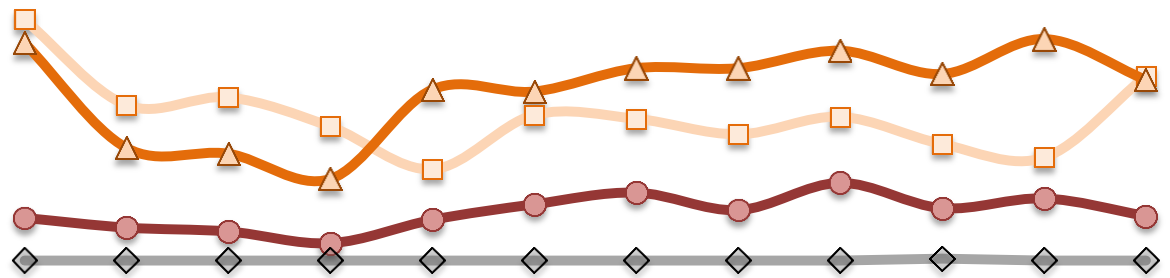
* The patient UI rate is the number of patient-involved unusual incidents reported for every 1000 inpatient days.

9. Admissions vs. Patient UI Rate



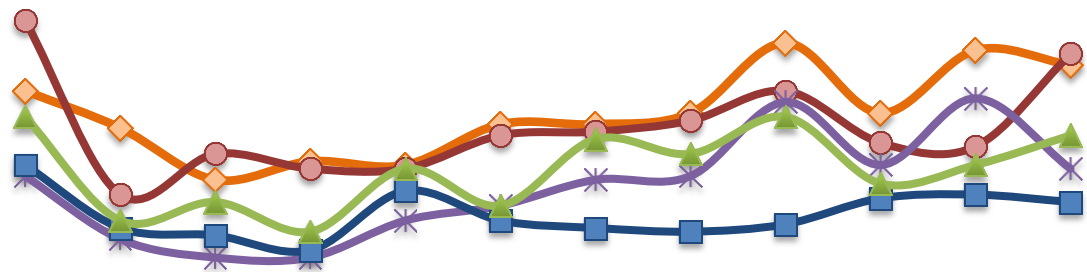
	May-13	Jun-13	Jul-13	Aug-13	Sep-13	Oct-13	Nov-13	Dec-13	Jan-14	Feb-14	Mar-14	Apr-14
—*— Patient UI Rate	29.5	19.3	19.7	15.2	16.7	22.1	25.2	23.3	25.0	22.5	23.8	25.7
—●— Admission	31	28	37	35	46	31	32	31	40	27	31	55

10. Unusual Incidents by Severity



	May-13	Jun-13	Jul-13	Aug-13	Sep-13	Oct-13	Nov-13	Dec-13	Jan-14	Feb-14	Mar-14	Apr-14
□ 1) Low	124	80	84	69	47	75	73	65	74	60	53	95
△ 2) Medium	112	58	55	42	88	87	99	99	108	96	114	93
● 3) High	22	17	15	9	21	29	35	26	40	27	32	23
◇ 4) Catstrp	0	0	0	0	0	0	0	0	0	1	0	0
Total UI	258	155	154	120	156	191	207	190	222	184	190	211

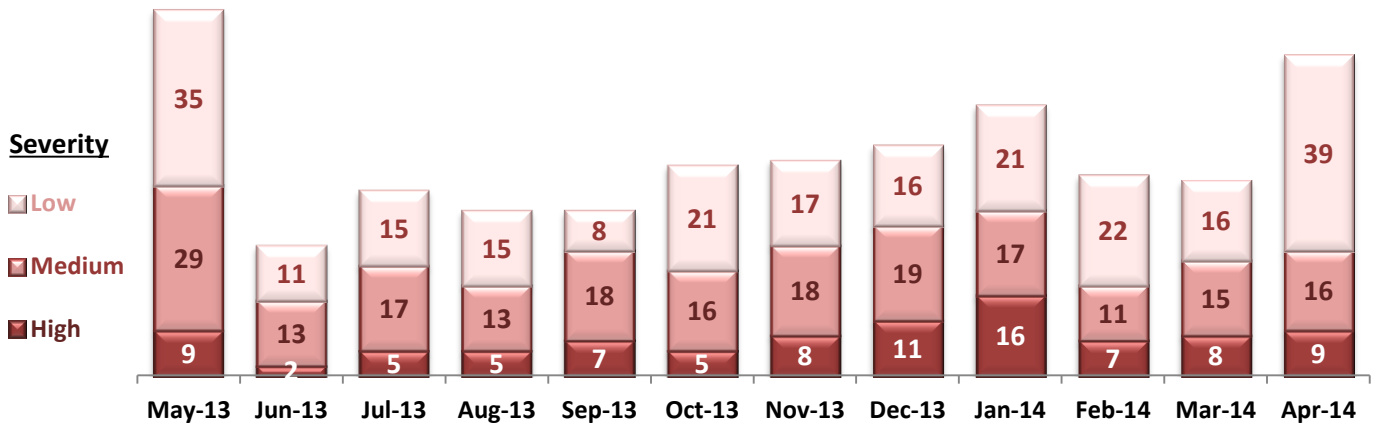
11. Selected Types of Incidents



	May-13	Jun-13	Jul-13	Aug-13	Sep-13	Oct-13	Nov-13	Dec-13	Jan-14	Feb-14	Mar-14	Apr-14
◇ Aggressive Behavior	54	44	30	35	34	45	45	48	67	48	65	61
● Physical Assault	73	26	37	33	33	42	43	46	54	40	39	64
* Pysch Emerg.	31	14	9	9	19	23	30	31	51	34	52	33
■ Fall	34	17	15	11	27	19	17	16	18	25	26	24
▲ Injury	47	19	24	16	33	23	41	37	47	29	34	42

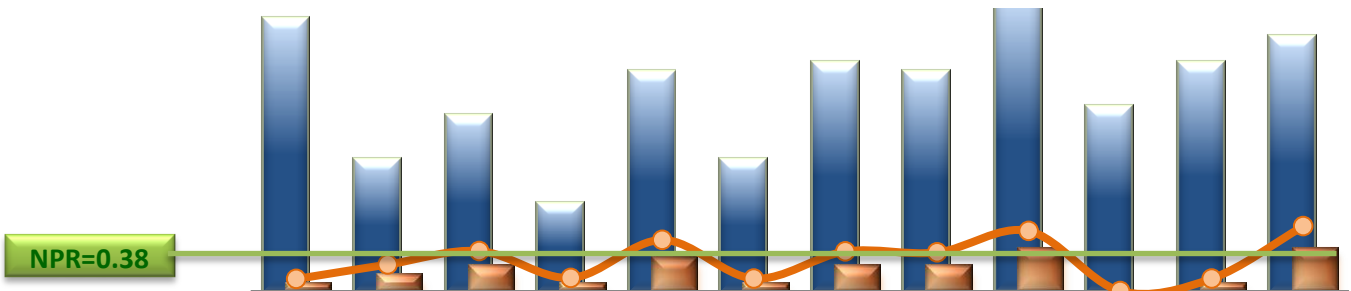
* These are incident types that are frequently reported. Some incidents may be counted in multiple categories. For example, a physical assault incident that accompanied psychiatric emergency and injury is counted under psychiatric emergency and injury as well as under physical assault. Injury is broadly defined to include any type of injuries regardless of the cause or severity level.

12. Physical Assaults by Severity



* Any physical assault that accompanies a code 13 or results in extensive injury needing off-unit treatment or transfer to ER is considered to be high severity, any physical assault that causes a minor injury that can be treated on unit is considered to be medium severity, and physical assault events that result in no injury are considered to be low severity.

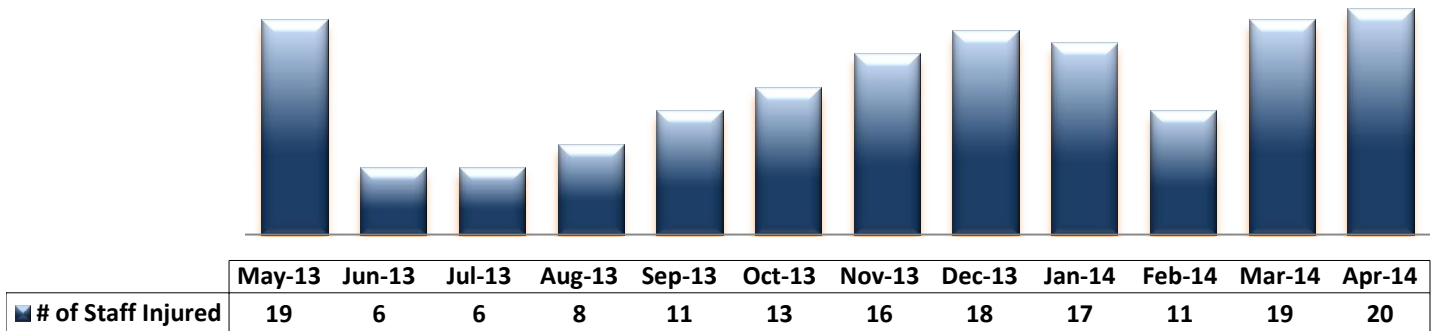
13. Patient Injuries



	May-13	Jun-13	Jul-13	Aug-13	Sep-13	Oct-13	Nov-13	Dec-13	Jan-14	Feb-14	Mar-14	Apr-14
Total Pts Injured	31	15	20	10	25	15	26	25	34	21	26	29
Major Pt Injuries*	1	2	3	1	4	1	3	3	5	0	1	5
Patient Injury Rate	0.12	0.26	0.40	0.13	0.51	0.12	0.39	0.38	0.60	0.00	0.12	0.64

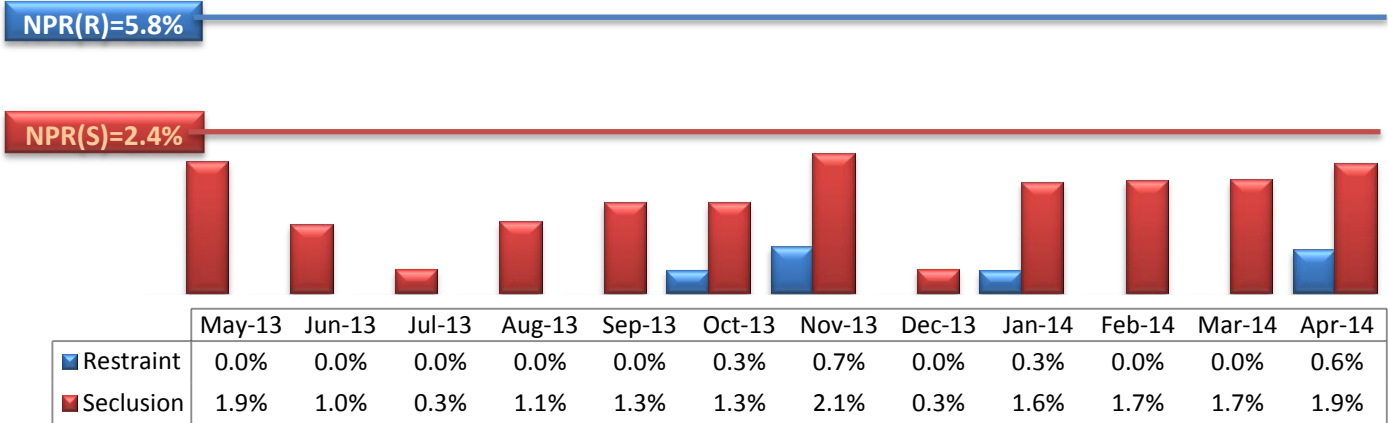
* Injury is broadly defined to include any type of injuries regardless of the cause or severity level. The total number of patients injured represents all of the reported injuries including minor injuries treated with first aid alone. However, the patient injury rate considers only the number of patient injuries that required beyond first-aid level treatment based on the NRI definition and the patient injury rate is the number of 'major' patient injuries per every 1000 inpatient days

14. Staff Injuries



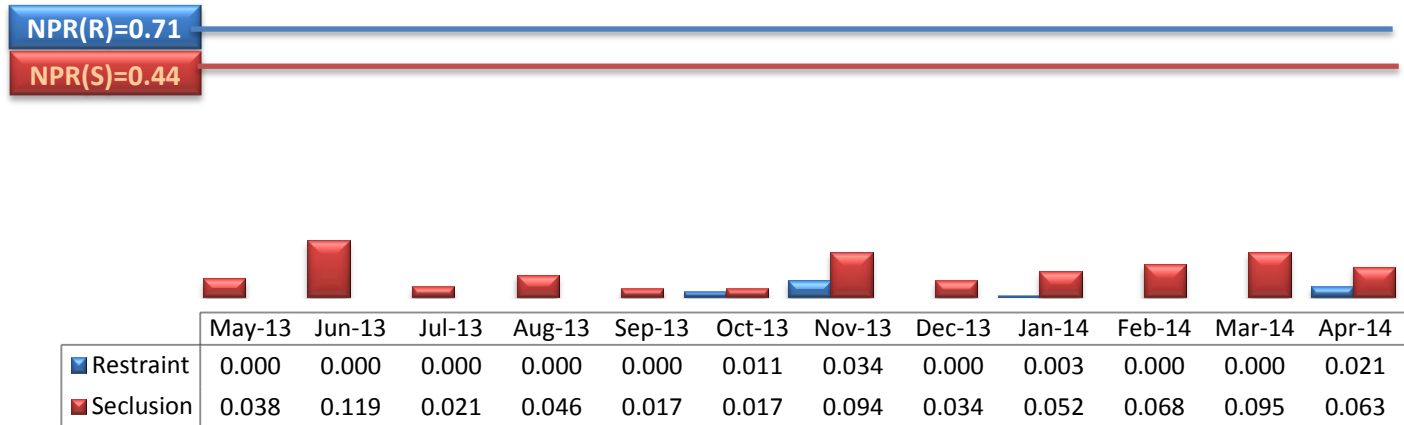
* Injury is broadly defined to include any type of injuries regardless of the cause or severity level. The total number of staff injured represents all of the reported staff injuries including minor injuries treated with first aid alone.

15. Percent of Patients Restrained or Secluded



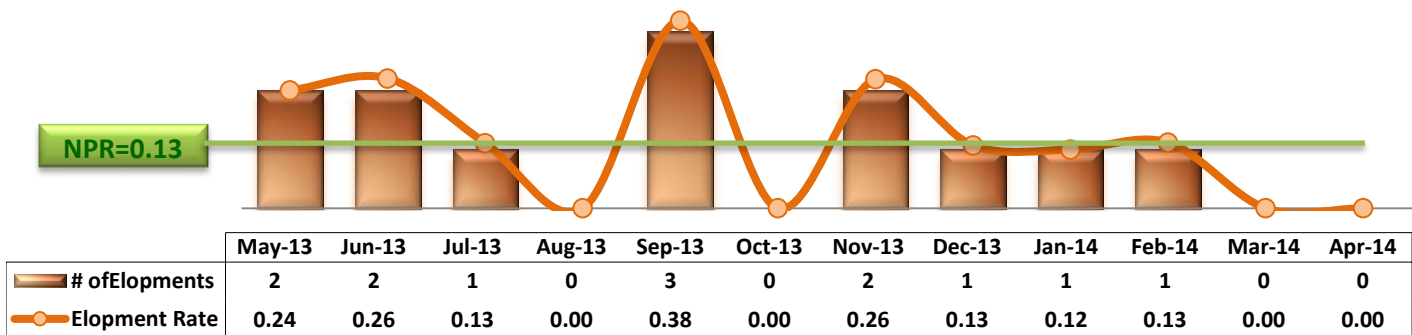
* Percent of unique patients who were restrained at least once and percent of unique patients who were secluded at least once. The denominator includes all individuals who were served in care >=1 day during month.

16. Restraint Hours Rate & Seclusion Hours Rate



* Restraint/Seclusion Hours Rate: Number of hours spent in restraint/seclusion for every 1000 inpatient hours.

17. Elopements

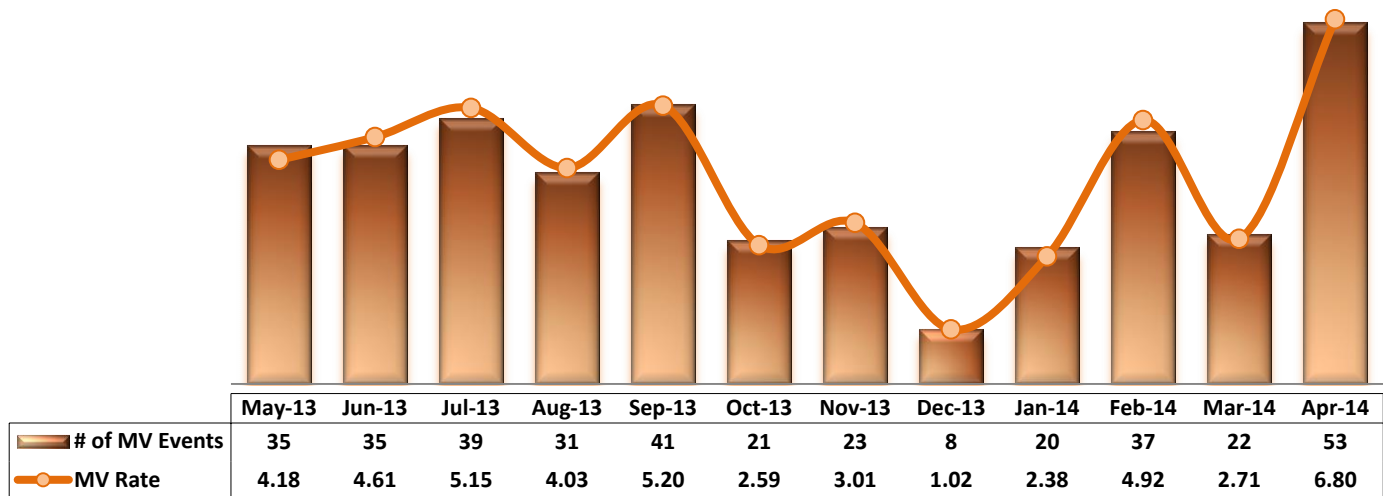


* It counts the total number of unauthorized leaves for any duration that were initiated during month and were recorded in Avatar. The elopement rate is the number of those unauthorized leaves that occurred for every 1000 inpatient days.

Key Trends: Medication Documentation, Medication Variance, ADR, and STAT (18~21)

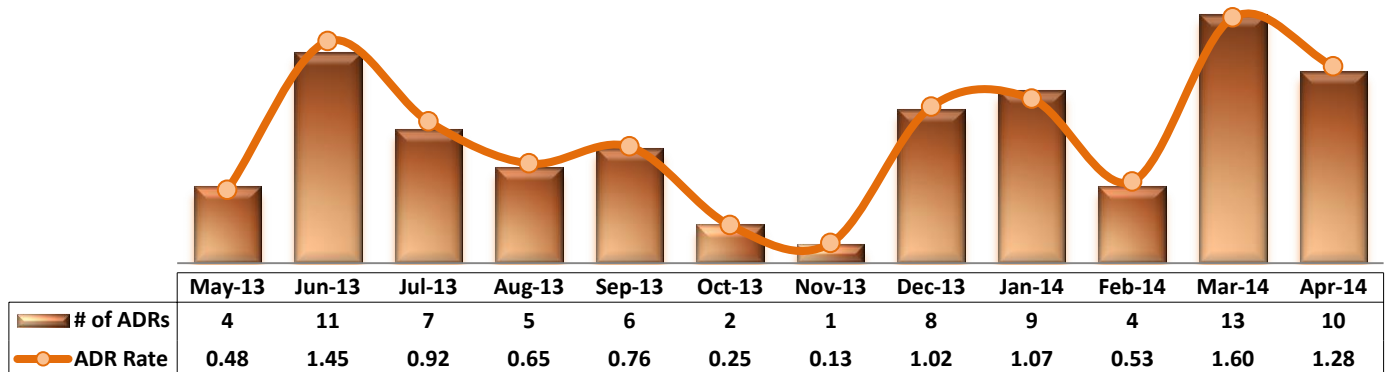
- The number of reported medication variance events significantly increased from 22 in March to 53 in April 2014, recording the highest number since February 2009.
- The rate of missing documentation on medication administration continued to decline in April 2014.
- The trend of STAT orders and events often resembles the trend of psychiatric emergencies: as the number of psychiatric emergencies decreased in April, the frequency of STAT events also noticeably decreased. However, the number of unique individuals with one or more STAT events in April (29) is much higher than that in March (16). A majority of those 29 were involved in one or two STAT events and only two (2) individuals were involved in >=3 STAT events.

18. Reported Medication Variance Events



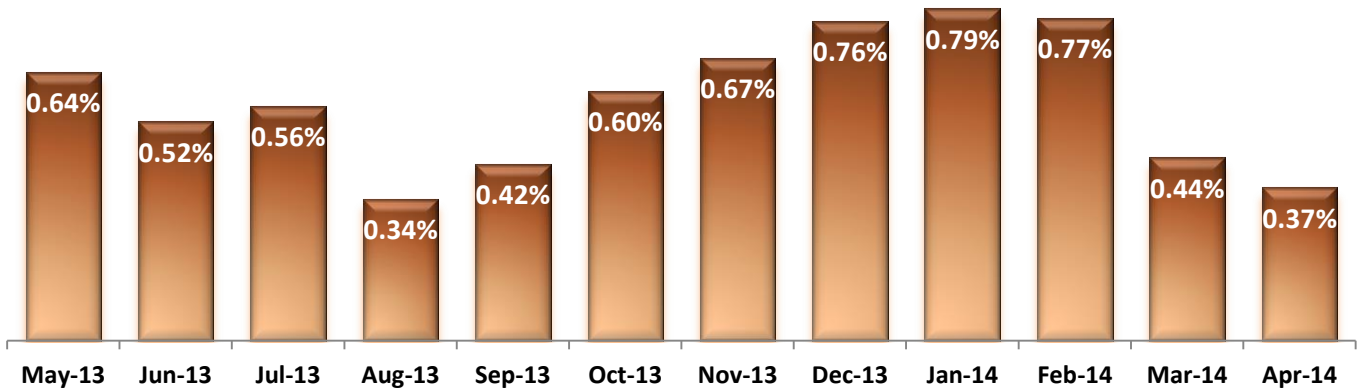
* MV Rate: Number of reported medication variance events that occurred for every 1000 inpatient days.

19. Reported Adverse Drug Reactions

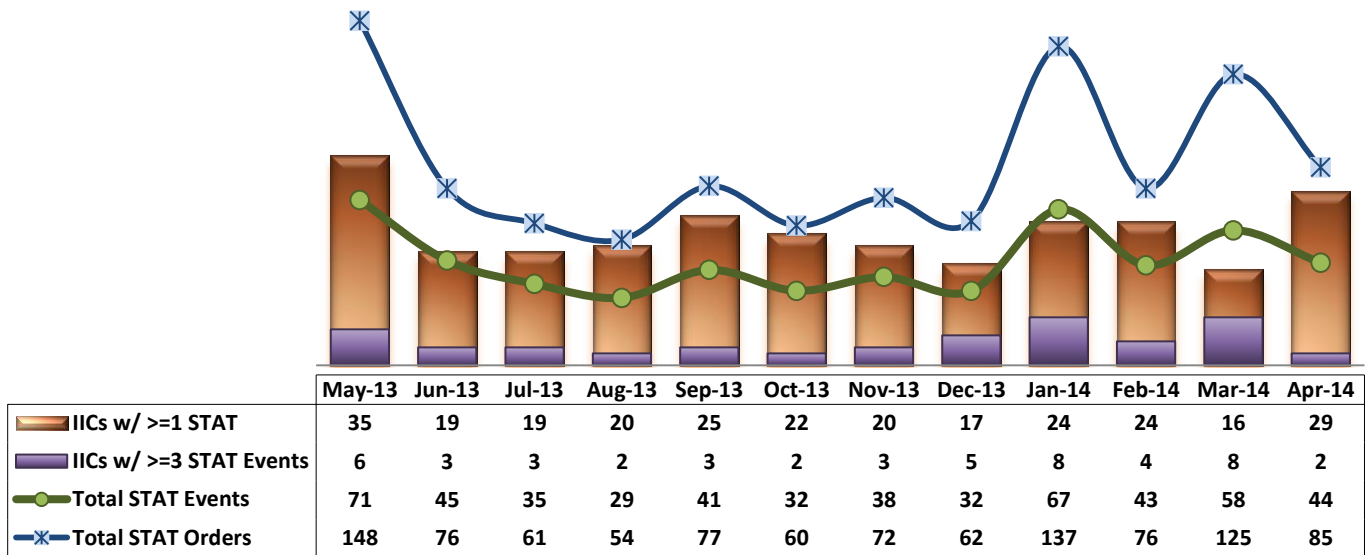


* ADR Rate: Number of reported adverse drug reaction events that occurred for every 1000 inpatient days.

20. Percent of Missing Documentation on Med-Administration



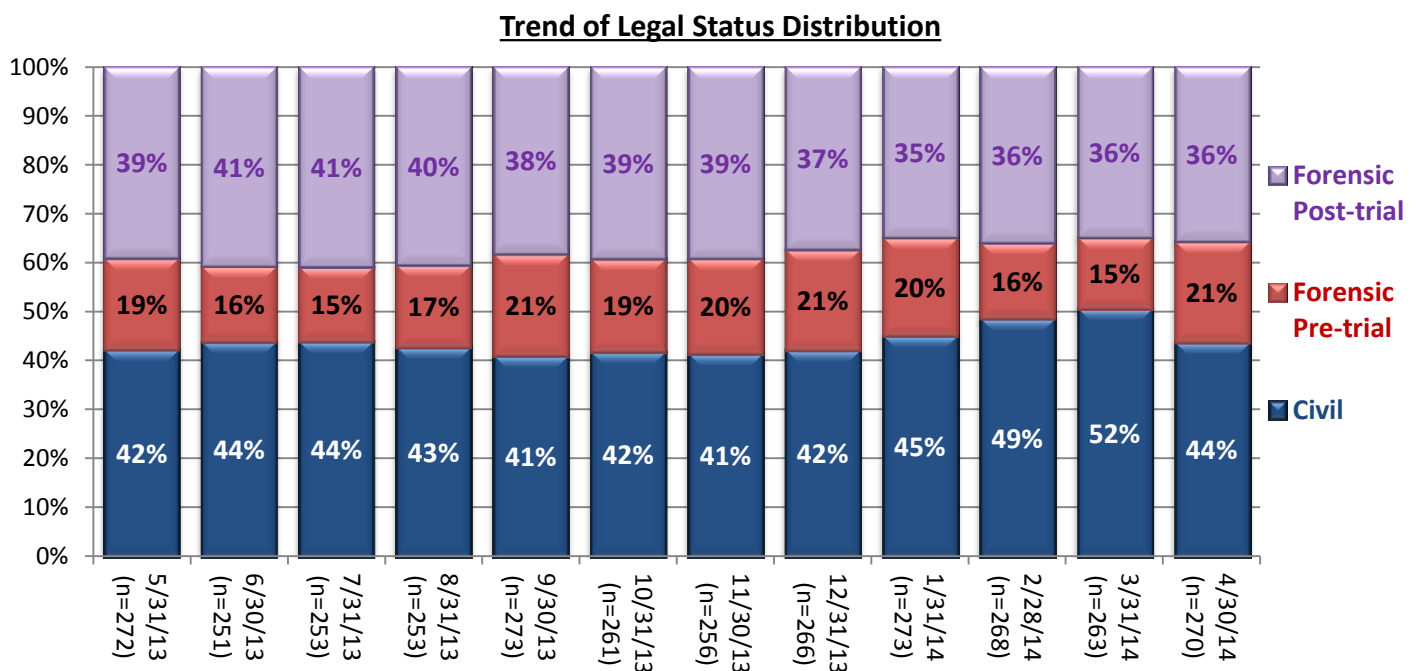
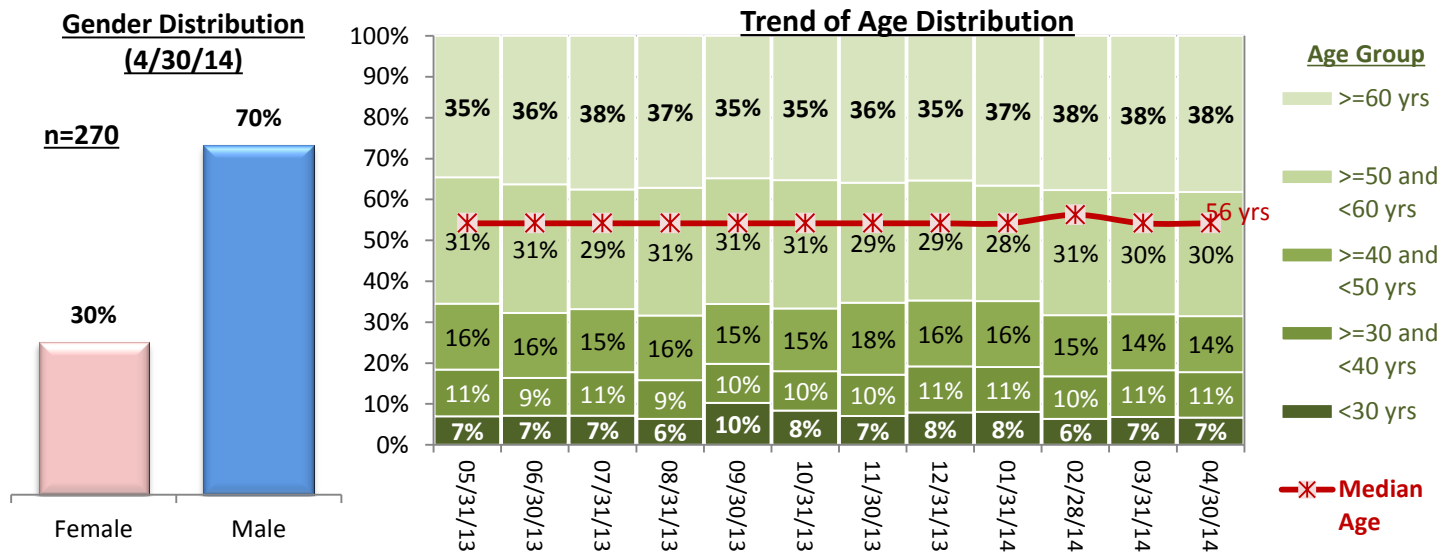
21. Number of STAT Events and Individuals Involved



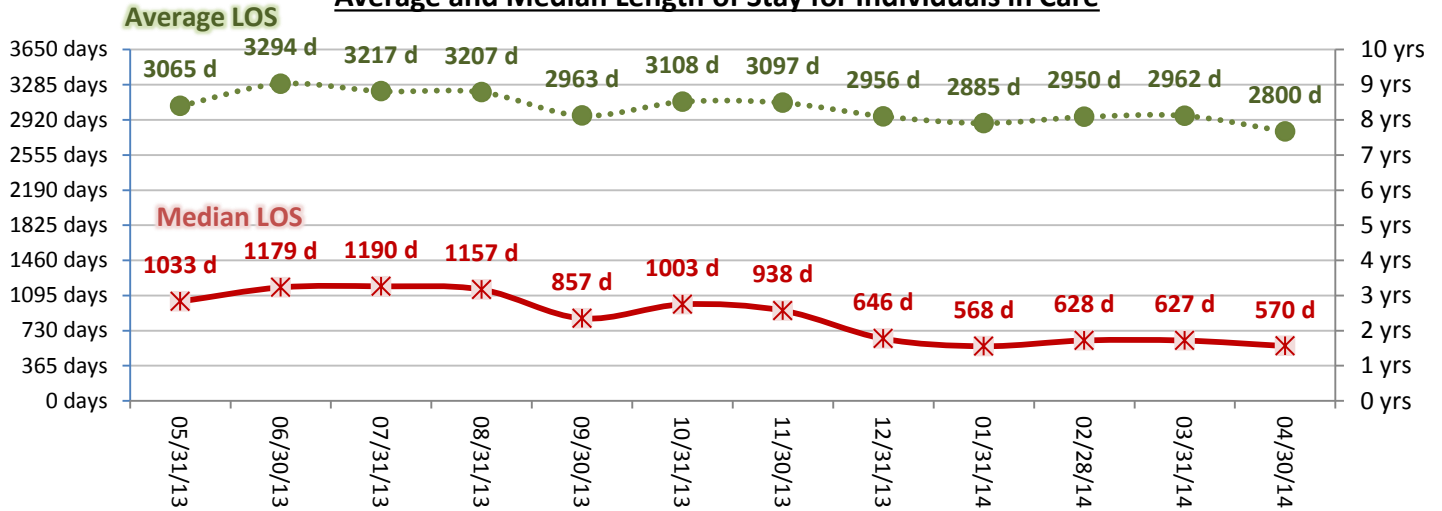
Key Trends: Demographics, Legal Status, and Length of Stay (21)

- The gender distribution slightly changes month by month but overall about 3 out of 10 individuals are female.
- The proportion of the elderly population in our care continued to grow throughout the year. The percentage of those 60 years or older gradually increased throughout the year: 35% in May 2013 to 38% since February through April 2014.
- The proportion of individuals with a civil legal status, particularly an outpatient commitment legal status, noticeably increased in February and March 2014. The percentage of civil population, however, significantly dropped in April while the proportion of forensic pre-trial population increased as a result of a major increase in the number of pre-trial admissions.
- An increase of admissions in March and April 2014 contributed to lowering the median length of stay (LOS) of individuals remaining in care since the proportion of recent admissions increased: nearly one out of five individuals in care as of April 30, 2014 was admitted less than 30 days ago.

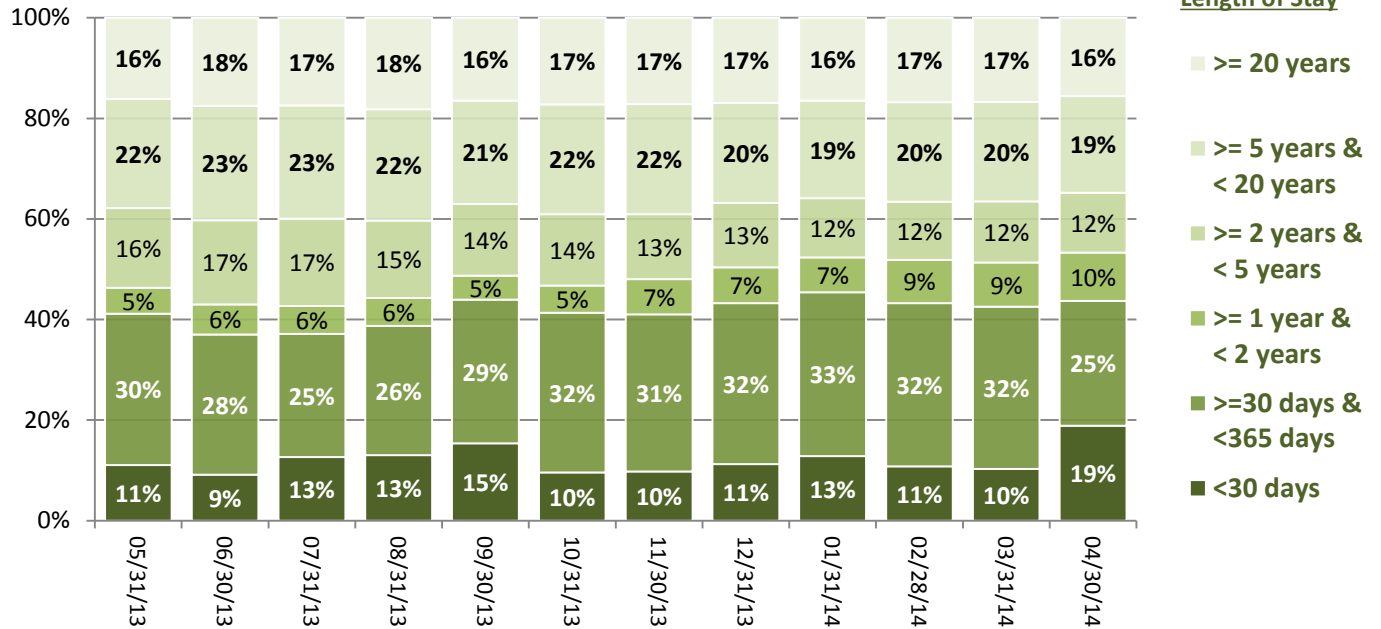
22. Demographics and Length of Stay



Average and Median Length of Stay for Individuals in Care



Trend of Length of Stay



Performance Related Information for Staff & Managers

1. Census, Admissions, Discharges & Transfers

Data Source: Avatar

Updated as of 05/16/14

Category	May-13	Jun-13	Jul-13	Aug-13	Sep-13	Oct-13	Nov-13	Dec-13	Jan-14	Feb-14	Mar-14	Apr-14	Monthly Average	Total (12mths)	Figure	
Admissions	Civil	17	16	16	18	22	15	12	11	23	15	16	17	17	198	Figure 1
	Pre-trial	13	10	18	16	21	14	18	19	16	11	11	34	17	201	
	Post-trial	1	2	3	1	3	2	2	1	1	1	4	4	2	25	
	Total	31	28	37	35	46	31	32	31	40	27	31	55	35	424	
Discharges	Civil	21	22	20	21	18	23	17	7	16	21	21	29	20	236	Figure 2
	Pre-trial	16	21	13	12	7	16	16	12	12	11	10	15	13	161	
	Post-trial	1	6	2	2	1	4	4	2	5	0	5	4	3	36	
	Total	38	49	35	35	26	43	37	21	33	32	36	48	36	433	
Net Increase During Month	Civil	-4	-6	-4	-3	4	-8	-5	4	7	-6	-5	-12		-38	Figure 3
	Pre-trial	-3	-11	5	4	14	-2	2	7	4	0	1	19		40	
	Post-trial	0	-4	1	-1	2	-2	-2	-1	-4	1	-1	0		-11	
	Total	-7	-21	2	0	20	-12	-5	10	7	-5	-5	7		-9	
All Individuals on Roll at End of Month	272	251	253	253	273	261	256	266	273	268	263	270	263			
a. Present on Unit	267	246	247	251	268	256	250	262	269	263	256	268	259			
b. On AL	4	3	5	1	3	4	5	2	3	5	7	2	4			
c. On UL	1	2	1	1	2	1	1	2	1	0	0	0	1			
All Individuals on Roll: Daily Average during Month*	274	259	249	252	266	266	260	258	274	272	266	264	263			
a. Present on Unit	270	253	244	248	263	261	255	253	271	268	262	260	259		Figure 4	
b. On AL	3	5	4	3	2	4	4	3	2	3	4	4	4			
c. On UL	1	1	1	1	1	1	1	1	2	1	0	0	0			
Patient Days**	8370	7597	7569	7693	7891	8101	7649	7844	8394	7514	8115	7789	7877	94526		
Inter-Unit Transfers during Month	8	3	11	5	10	4	5	5	27	8	12	6	9	104	Figure 5	
Medical Leaves Initiated during Month	Emergency	17	12	10	10	10	20	14	13	14	9	18	8	13	155	
	Non-Emer	23	24	35	24	22	39	27	34	25	32	25	30	28	340	
	Total	40	36	45	34	32	59	41	47	39	41	43	38	41	495	
Non-Medical Leaves Initiated during Month	80	92	88	96	97	146	121	138	142	141	175	147	122	1463		
UL Initiated during Month	2	2	1	0	3	0	2	1	1	1	0	0	1	13		
Total Unique Patients Served during Month	310	299	286	285	299	299	291	287	306	300	299	315	298			
30 Day Readmission ***	Civil	3	0	1	0	0	1	0	0	0	0		0	5		
	Pre-trial	0	1	0	1	1	1	1	0	0	0		0	5		
	Post-trial	0	1	0	1	0	0	0	0	0	0		0	2		
	Total	3	2	1	2	1	2	1	0	0	0	0	1	12		

* This is the average number of individuals served on a given day for the respective month. Due to rounding from average calculation, numbers from its subcategories a, b, & c may not add up to the total number on this row.

** It counts the number of patients who are present on the unit and excludes those on authorized or unauthorized leave at 11:59pm on a given day.

*** Number of patients returning within 30 days of discharges that occurred during month.

Performance Related Information for Staff & Managers

2. Key Performance Indicators

Data Source: UI DB, MV DB, ADR DB, Restraint/Seclusion Log, and Avatar

Updated as of 05/16/14

Category	May-13	Jun-13	Jul-13	Aug-13	Sep-13	Oct-13	Nov-13	Dec-13	Jan-14	Feb-14	Mar-14	Apr-14	Monthly Average	NPR* (Jun-13)	Figure	
30 Day Readmit (Discharge Cohort)**	Civil	14.3%	0.0%	5.0%	0.0%	0.0%	4.3%	0.0%	0.0%	0.0%	0.0%	0.0%	2.3%		Figure 6	
	Pre-trial	0.0%	4.8%	0.0%	8.3%	14.3%	6.3%	6.3%	0.0%	0.0%	0.0%	0.0%	3.4%			
	Post-trial	0.0%	16.7%	0.0%	50.0%	0.0%	0.0%	0.0%	0.0%	0.0%	N/A	N/A	6.1%			
	Combined	7.9%	4.1%	2.9%	5.7%	3.8%	4.7%	2.7%	0.0%	0.0%	0.0%	0.0%	3.0%	6.9%		
Number of Unusual Incidents*	223	120	115	89	115	191	207	190	222	184	190	211	187		Figure 7	
Patient Unusual Incident Rate	29.5	19.3	19.7	15.2	16.7	22.1	25.2	23.3	25.0	22.5	23.8	25.7	22.4		Figure 8	
UI by Severity	Catastrophe	0	0	0	0	0	0	0	0	1	0	0	0		Figure 10	
	High	22	17	15	9	21	29	26	40	27	32	23	25			
	Medium	112	58	55	42	88	87	99	99	108	96	114	93	88		
	Low	124	80	84	69	47	75	73	65	74	60	53	95	75		
Physical Assault Incident Rate	8.7	3.4	4.9	4.3	4.2	5.2	5.6	5.9	6.4	5.3	4.8	8.2	5.6			
Selected Types of Incidents	Physical Assault	73	26	37	33	33	42	43	46	54	40	39	64	44	Figure 11	
	Aggressive Behav.	54	44	30	35	34	45	45	48	67	48	65	61	48		
	Psych Emergency	31	14	9	9	19	23	30	31	51	34	52	33	28		
	Fall	34	17	15	11	27	19	17	16	18	25	26	24	21		
	Injury	47	19	24	16	33	23	41	37	47	29	34	42	33		
Physical Assaults by Severity	High	9	2	5	5	7	5	8	11	7	8	9	8		Figure 12	
	Medium	29	13	17	13	18	16	18	19	11	15	16	17			
	Low	35	11	15	15	8	21	17	16	21	22	16	39	20		
Patient Injury Rate***	0.12	0.26	0.40	0.13	0.51	0.12	0.39	0.38	0.60	0.00	0.12	0.64	0.31	0.38		
Patients with Major Injuries***	1	2	3	1	4	1	3	3	5	0	1	5	2		Figure 13	
Total Patients Injured***	31	15	20	10	25	15	26	25	34	21	26	29	23			
Total Staff Injured***	19	6	6	8	11	13	16	18	17	11	19	20	14		Figure 14	
Elopement Rate	0.24	0.26	0.13	0.00	0.38	0.00	0.26	0.13	0.12	0.13	0.00	0.00	0.15	0.13	Figure 17	
Medication Variance Rate	4.18	4.61	5.15	4.03	5.20	2.59	3.01	1.02	2.38	4.92	2.71	6.80	3.86		Figure 18	
Adverse Drug Reaction Rate	0.48	1.45	0.92	0.65	0.76	0.25	0.13	1.02	1.07	0.53	1.60	1.28	0.85		Figure 19	
Missing Med-Admin Documentation	0.64%	0.52%	0.56%	0.34%	0.42%	0.60%	0.67%	0.76%	0.79%	0.77%	0.44%	0.37%	0.57%		Figure 20	
Percent of Patients Restrained	0.0%	0.0%	0.0%	0.0%	0.0%	0.3%	0.7%	0.0%	0.3%	0.0%	0.0%	0.6%	0.2%	5.8%	Figure 15	
Percent of Patients Secluded	1.9%	1.0%	0.3%	1.1%	1.3%	1.3%	2.1%	0.3%	1.6%	1.7%	1.7%	1.9%	1.4%	2.4%		
Restraint Hours Rate	0.000	0.000	0.000	0.000	0.000	0.011	0.034	0.000	0.003	0.000	0.000	0.021	0.006	0.71	Figure 16	
Seclusion Hours Rate	0.038	0.119	0.021	0.046	0.017	0.017	0.094	0.034	0.052	0.068	0.095	0.063	0.055	0.44		

* National Public Rate, NASMHPD Research Institute, National Research Institute (NRI), Data as of June 2013, Published in November 2013.

** Percentage of patients returning within 30 days of discharges that occurred during month

*** Refer to the next page [UI & Medication]

Performance Related Information for Staff & Managers

3. Unusual Incident & Medication

Data Source: UI DB, MV DB, ADR DB, and Avatar

Updated as of 05/16/14

Category		May-13	Jun-13	Jul-13	Aug-13	Sep-13	Oct-13	Nov-13	Dec-13	Jan-14	Feb-14	Mar-14	Apr-14	Monthly Average	Total (12mths)	NPR* (Jun-13)
Unusual Incidents (excluding MV)**	Total UIs	258	155	154	120	156	191	207	190	222	184	190	211	187	2238	
	Major UIs Only	175	87	94	71	111	126	128	119	139	125	141	143	122	1459	
	Pt Involved UI Only	247	147	149	117	132	179	193	183	210	169	193	200	177	2119	
	Patient UI Rate	29.5	19.3	19.7	15.2	16.7	22.1	25.2	23.3	25.0	22.5	23.8	25.7	22.4		
	Unique Pts Involved in UI	120	91	96	86	110	116	103	106	113	107	104	129	107	1281	
Selected Types of Incidents	Physical Assault	73	26	37	33	33	42	43	46	54	40	39	64	44	530	
	Aggressive Behavior	54	44	30	35	34	45	45	48	67	48	65	61	48	576	
	Psych Emergency	31	14	9	9	19	23	30	31	51	34	52	33	28	336	
	Fall	34	17	15	11	27	19	17	16	18	25	26	24	21	249	
	Injury	47	19	24	16	33	23	41	37	47	29	34	42	33	392	
Physical Assault Rate		8.7	3.4	4.9	4.3	4.2	5.2	5.6	5.9	6.4	5.3	4.8	8.2	5.6		
UI by Severity	Catastrophe	0	0	0	0	0	0	0	0	0	1	0	0	0	1	
	High	22	17	15	9	21	29	35	26	40	27	32	23	25	296	
	Medium	112	58	55	42	88	87	99	99	108	96	114	93	88	1051	
	Low	124	80	84	69	47	75	73	65	74	60	53	95	75	899	
Physical Assaults by Severity	High	9	2	5	5	7	5	8	11	16	7	8	9	8	92	
	Medium	29	13	17	13	18	16	18	19	17	11	15	16	17	202	
	Low	35	11	15	15	8	21	17	16	21	22	16	39	20	236	
Total Patients Injured***		31	15	20	10	25	15	26	25	34	21	26	29	23	277	
Patients with Major Injuries***		1	2	3	1	4	1	3	3	5	0	1	5	2	29	
Patient Injury Rate***		0.12	0.26	0.40	0.13	0.51	0.12	0.39	0.38	0.60	0.00	0.12	0.64	0.31		0.38
Total Staff Injured**		19	6	6	8	11	13	16	18	17	11	19	20	14		
Total UIs Documented in Avatar		2	2	1	0	3	0	2	1	1	1	0	0	1	14	
Elopement Rate		0.24	0.26	0.13	0.00	0.38	0.00	0.26	0.13	0.12	0.13	0.00	0.00	0.15		0.13
Med Variance (MV) Reports**		35	35	39	31	41	21	23	8	20	37	22	53	30	365	
MV Rate		4.18	4.61	5.15	4.03	5.20	2.59	3.01	1.02	2.38	4.92	2.71	6.80	3.86		
Adverse Drug Reactions Reports		4	11	7	5	6	2	1	8	9	4	13	10	7	80	
ADR Rate		0.48	1.45	0.92	0.65	0.76	0.25	0.13	1.02	1.07	0.53	1.60	1.28	0.85		
Total Med Administrations Scheduled		107694	102644	102303	102848	101049	95559	101422	102249	108474	98616	107326	104201		1234385	
Total Missing Documentations		690	537	572	348	427	570	684	780	860	759	469	381		7077	
Percent of Missing Documentation		0.64%	0.52%	0.56%	0.34%	0.42%	0.60%	0.67%	0.76%	0.79%	0.77%	0.44%	0.37%		0.57%	
Total STAT Orders		148	76	61	54	77	60	72	62	137	76	125	85	86		Figure 21
Total STAT Events****		71	45	35	29	41	32	38	32	67	43	58	44	45		
Total Individuals Involved >=1 STAT		35	19	19	20	25	22	20	17	24	24	16	29	23		
Total Patients with >=3 STAT Events		6	3	3	2	3	2	3	5	8	4	8	2	4		

* National Public Rate, NASMHPD Research Institute, National Research Institute (NRI), Data as of June 2013, Published in November 2013.

** Numbers may change if any additional UI report is made after the data run date from UI database (around the 15th of the following month); According to the revised UI policy as of November 4, 2013, a medication variance (MV) incident is no longer considered to be an unusual incident. While the official number of UIs until October 2013 remains as including MVs, for PRISM publication, UI data for the past 12 months herein has been reanalyzed in order to show the UI trend in consistent logic.

*** Injury is broadly defined to include any type of injuries regardless of the cause or severity level. The total number of patients injured represents all of the reported injuries including minor injuries treated with first aid alone. However, the patient injury rate considers only the number of patient injuries that required beyond first-aid level treatment based on the NRI definition and the patient injury rate is the number of 'major' patient injuries per every 1000 inpatient days

**** One STAT event may involve more than one STAT order for the same patient. Any orders placed within 20 minute timeframe are considered to belong to one STAT event.

Performance Related Information for Staff & Managers

4. Restraint & Seclusion

Data Source: Restraint/Seclusion Log and UI DB (for # of total events and patients) and Avatar (for patient days/hours)

Updated as of 05/16/14

Category	May-13	Jun-13	Jul-13	Aug-13	Sep-13	Oct-13	Nov-13	Dec-13	Jan-14	Feb-14	Mar-14	Apr-14	Monthly Average	Total (12mths)	NPR* (Jun-13)
Number of Restraint Events	0	0	0	0	0	2	2	0	1	0	0	2	0.6	7	
Number of Unique Patients Restrained	0	0	0	0	0	1	2	0	1	0	0	2	0.5		
Percentage of Patients Restrained	0.0%	0.0%	0.0%	0.0%	0.0%	0.3%	0.7%	0.0%	0.3%	0.0%	0.0%	0.6%	0.2%		5.8%
Total Restraint Hours (h:mm)	0:00	0:00	0:00	0:00	0:00	2:08	6:15	0:00	0:35	0:00	0:00	4:00	1:04	12:58	
Restraint Hours Rate	0.000	0.000	0.000	0.000	0.000	0.011	0.034	0.000	0.003	0.000	0.000	0.021	0.006		0.71
Number of Seclusion Events	12	5	4	5	4	4	11	6	6	13	15	10	7.9	95	
Number of Unique Patients Secluded	6	3	1	3	4	4	6	1	5	5	5	6	4.1		
Percentage of Patients Secluded	1.9%	1.0%	0.3%	1.1%	1.3%	1.3%	2.1%	0.3%	1.6%	1.7%	1.7%	1.9%	1.4%		2.4%
Total Seclusion Hours (h:mm)	7:44	21:45	3:50	8:30	3:10	3:20	17:11	6:20	10:34	12:15	18:27	11:47	10:24	124:53	
Seclusion Hours Rate	0.038	0.119	0.021	0.046	0.017	0.017	0.094	0.034	0.052	0.068	0.095	0.063	0.055		0.44

* National Public Rate, NASMHPD Research Institute, National Research Institute (NRI), Data as of June 2013, Published in November 2013.

Performance Related Information for Staff & Managers

5. Demographic Information of Individuals in Care

Data Source: Avatar

Updated as of 05/16/14

Category	Sub-group	May-13	Jun-13	Jul-13	Aug-13	Sep-13	Oct-13	Nov-13	Dec-13	Jan-14	Feb-14	Mar-14	Apr-14	Monthly Average	Percent*
Total Active (on Roll) at End of Month*		272	251	253	253	273	261	256	266	273	268	263	270	263	
Gender	Female	78	67	73	70	70	68	69	72	79	75	76	82	73	27.8%
	Male	194	184	180	183	203	193	187	194	194	193	187	188	190	72.2%
Age	Median Age (Years)	56 yrs	56 yrs	56 yrs	56 yrs	56 yrs	56 yrs	56 yrs	56 yrs	56 yrs	57 yrs	56 yrs	56 yrs	56 yrs	
	<30 years old	19	18	18	16	28	22	18	21	22	17	18	18	20	7.4%
	>=30 and <40 years old	31	23	27	24	26	25	26	30	30	28	30	30	28	10.4%
	>=40 and <50 years old	44	40	39	40	40	40	45	43	44	40	36	37	41	15.4%
	>=50 and <60 years old	84	79	74	79	84	82	75	78	77	82	78	82	80	30.2%
	>=60 years old	94	91	95	94	95	92	92	94	100	101	101	103	96	36.5%
Legal Status of Individuals on Roll at End of Month	Emergency	31	27	19	18	27	18	19	26	34	33	35	31	27	10.1%
	Inpatient Commitment	21	21	23	20	22	24	23	23	26	28	28	30	24	9.1%
	Outpatient Commitment	18	18	19	24	21	25	23	22	22	22	32	19	22	8.4%
	Voluntary	45	44	50	46	42	42	41	41	41	47	43	38	43	16.5%
	Civil Sub-total	115	110	111	108	112	109	106	112	123	130	138	118	116	44.1%
	DC Exam	50	38	38	41	55	48	49	54	54	41	38	35	45	17.1%
	Mentally Incompetent	1	1	1	2	2	2	1	1	1	1	2	21	3	1.1%
	Forensic Pre-trial Sub-total	51	39	39	43	57	50	50	55	55	42	40	56	48	18.3%
	NGBRI - DC	91	87	89	88	89	86	83	82	77	78	77	79	84	31.8%
	NGBRI - US	10	10	9	9	10	11	12	12	13	13	13	12	11	4.2%
NGBRI - VI	1	1	1	1	1	1	1	1	1	1	1	1	1	0.4%	
Dual Commitment	2	2	2	2	2	2	2	2	2	2	2	2	2	0.8%	
Sexual Psychopath (Miller Act)	2	2	2	2	2	2	2	2	2	2	2	2	2	0.8%	
Forensic Post-trial Sub-total	106	102	103	102	104	102	100	99	95	96	95	96	100	38.0%	
Length of Stay	Median LOS (Days)	1033 d	1179 d	1190 d	1157 d	857 d	1003 d	938 d	646 d	568 d	628 d	627 d	570 d	866 d	
	Average LOS (Days)	3065 d	3294 d	3217 d	3207 d	2963 d	3108 d	3097 d	2956 d	2885 d	2950 d	2962 d	2800 d	3042 d	
	<30 Days	30	23	32	33	42	25	25	30	35	29	27	51	32	12.1%
	>=30 ~ <365 Days	82	70	62	65	78	83	80	85	89	87	85	67	78	29.5%
	>= 1 Year & < 2 Years	14	15	14	14	13	14	18	19	19	23	23	26	18	6.7%
	>= 2 Years & < 5 Years	43	42	44	39	39	37	33	34	32	31	32	32	37	13.9%
	>= 5 Years & < 20 Years	59	57	57	56	56	57	56	53	53	53	52	52	55	20.9%
>= 20 Years	44	44	44	46	45	45	44	45	45	45	44	42	44	16.9%	

* Counts the total number of individuals who are on the hospital roll at end of each month. This number serves as denominator to calculate percentage of each group.

Performance Related Information for Staff & Managers

6. Major Unusual Incidents by Incident Location/Unit

Data Source: UI DB

Updated as of 05/16/14

Category		May-13	Jun-13	Jul-13	Aug-13	Sep-13	Oct-13	Nov-13	Dec-13	Jan-14	Feb-14	Mar-14	Apr-14	Monthly Average	Total (12mths)	Percent
Total Unusual Incidents		258	155	154	120	156	191	207	190	222	184	190	211	187	2238	
Physical Assault		73	26	37	33	33	42	43	46	54	40	39	64	44	530	100%
Incident Location	1A	3	0	2	6	1	3	1	2	2	1	1	1	2	23	4%
	1B	7	0	0	1	0	2	1	0	0	4	0	1	1	16	3%
	1C	4	0	5	3	4	4	4	3	3	1	0	5	3	36	7%
	1D	7	2	6	4	6	5	4	3	4	7	13	4	5	65	12%
	1E	8	3	4	2	6	2	6	4	12	0	11	8	6	66	12%
	1F	16	1	3	4	6	3	3	8	7	5	1	7	5	64	12%
	1G	2	6	7	1	1	5	8	16	10	8	3	8	6	75	14%
	2A	0	0	0	0	0	0	0	0	0	0	0	0	0	0	0%
	2B	0	0	1	0	0	0	0	0	0	0	0	0	0	1	0%
	2C	4	2	1	3	0	3	3	3	4	5	2	7	3	37	7%
	2D	9	8	2	0	2	8	8	4	6	4	3	15	6	69	13%
	TLC - Intensive	8	3	3	6	4	5	2	2	4	5	3	5	4	50	9%
	TLC - Transitional	4	1	3	2	2	1	3	0	1	0	1	1	2	19	4%
	Other	1	0	0	1	1	1	0	1	1	0	1	2	1	9	2%
	Psych Emergency		31	14	9	9	19	23	30	31	51	34	52	33	28	336
Incident Location	1A	0	0	0	0	0	0	0	0	0	1	0	0	0	1	0%
	1B	0	0	0	0	0	0	0	0	0	3	3	0	1	6	1%
	1C	0	0	0	0	3	1	4	1	0	1	1	0	1	11	2%
	1D	4	2	1	1	3	2	1	0	8	3	7	2	3	34	6%
	1E	10	0	2	0	5	2	9	2	14	1	22	8	6	75	14%
	1F	14	8	1	3	6	3	11	10	17	16	10	5	9	104	20%
	1G	2	3	4	2	1	8	5	16	10	5	3	8	6	67	13%
	2A	0	0	0	0	0	0	0	0	0	0	0	2	0	2	0%
	2B	0	0	0	0	0	1	0	0	0	0	0	0	0	1	0%
	2C	0	0	0	2	1	0	0	0	0	1	4	4	1	12	2%
	2D	0	0	0	0	0	4	0	2	1	2	1	3	1	13	2%
	TLC - Intensive	0	0	0	0	0	2	0	0	1	1	1	0	0	5	1%
	TLC - Transitional	1	1	0	1	0	0	0	0	0	0	0	1	0	4	1%
	Other	0	0	1	0	0	0	0	0	0	0	0	0	0	1	0%

Performance Related Information for Staff & Managers

6. Major Unusual Incidents by Incident Location/Unit

Data Source: UI DB

Updated as of 05/16/14

Category		May-13	Jun-13	Jul-13	Aug-13	Sep-13	Oct-13	Nov-13	Dec-13	Jan-14	Feb-14	Mar-14	Apr-14	Monthly Average	Total (12mths)	Percent	
Fall		34	17	15	11	27	19	17	16	18	25	26	24	21	249	100%	
Incident Location	1A	8	3	2	4	3	2	1	3	2	3	5	1	3	37	15%	
	1B	6	5	4	2	3	4	1	2	1	3	2	2	3	35	14%	
	1C	1	1	3	0	3	2	1	1	4	2	2	2	2	22	9%	
	1D	0	0	0	1	3	2	3	1	1	2	4	1	2	18	7%	
	1E	1	0	1	0	4	1	2	1	3	1	1	2	1	17	7%	
	1F	1	1	0	1	1	0	0	1	3	1	1	1	1	11	4%	
	1G	0	1	0	0	0	0	1	2	0	1	1	1	1	7	3%	
	2A	1	2	0	0	1	2	0	0	0	1	0	0	1	7	3%	
	2B	1	1	0	0	2	1	2	3	0	1	2	4	1	17	7%	
	2C	2	0	2	0	1	0	0	0	0	1	4	1	1	11	4%	
	2D	5	2	0	1	2	1	2	0	1	2	2	7	2	25	10%	
	TLC - Intensive	0	1	0	0	2	2	2	2	2	0	0	0	1	1	10	4%
	TLC - Transitional	7	0	0	0	1	1	1	1	0	0	1	0	1	1	12	5%
	Other	1	0	3	2	1	1	1	1	0	3	6	2	0	2	20	8%
Physical Injury		47	19	24	16	33	23	41	37	47	29	34	42	33	392	100%	
Incident Location	1A	1	1	4	4	2	1	2	1	0	1	4	3	2	24	6%	
	1B	6	2	1	1	3	0	2	0	1	2	2	1	2	21	5%	
	1C	2	1	3	0	3	1	2	3	3	1	1	0	2	20	5%	
	1D	4	1	5	3	7	4	5	4	11	6	5	1	5	56	14%	
	1E	4	3	0	1	4	2	6	2	7	1	8	6	4	44	11%	
	1F	9	3	2	3	4	1	2	10	10	5	1	2	4	52	13%	
	1G	2	2	2	1	1	5	4	11	3	5	2	5	4	43	11%	
	2A	2	0	0	0	1	1	1	1	0	0	0	0	0	5	1%	
	2B	0	1	0	0	1	1	1	1	1	0	1	2	1	9	2%	
	2C	3	0	2	1	1	1	3	1	4	1	5	7	2	29	7%	
	2D	8	2	1	0	2	2	4	3	3	3	2	8	3	38	10%	
	TLC - Intensive	2	3	1	2	2	1	4	1	2	1	2	2	2	23	6%	
	TLC - Transitional	2	0	2	0	1	1	2	0	0	0	0	0	0	1	8	2%
	Other	2	0	1	0	1	2	3	0	3	2	0	6	2	20	5%	

* Not every incident is a major incident. This counts only those incidents that were classified to be major based on the policy.