

**Government of the District of Columbia
Department of Behavioral Health (DBH)**

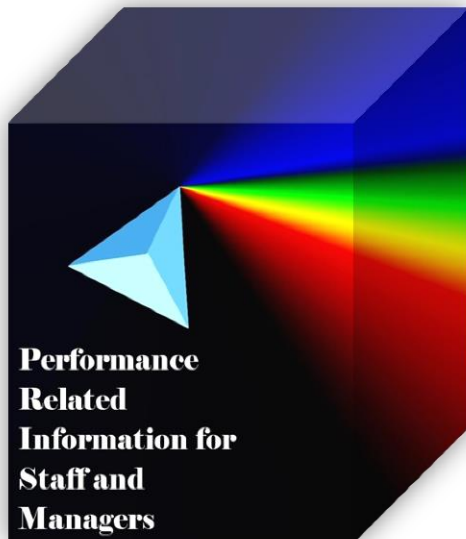


Performance Related Information for Staff and Managers

PRISM

NOVEMBER 2014

Table of Contents



1.	Admissions to SEH.....	1
2.	Discharges from SEH	1
3.	Average Daily Census	2
4.	Transfers	2
5.	30-Day Readmission Rate.....	2
6.	Unusual Incidents.....	3
7.	Patient-Involved Unusual Incidents.....	3
8.	Admissions vs. Patient UI Rate	4
9.	Unusual Incidents by Severity	4
10.	Selected Types of Incidents	4
11.	Physical Assaults by Severity	5
12.	Patient Injuries.....	5
13.	Staff Injuries.....	5
14.	Percent of Patients Restrained or Secluded.....	6
15.	Restraint Hours Rate & Seclusion Hours Rate.....	6
16.	Eloperments	6
17.	Reported Medication Variance Events	7
18.	Reported Adverse Drug Reactions.....	7
19.	Percent of Missing Documentation on Med-Administration	8
20.	Medication Refusal Rate*	8
21.	Number of STAT Events and Individuals Involved	8
22.	Percentage of SiteFM Work Orders Completed within 3 Days	9
23.	Demographics and Length of Stay	10
	<input type="checkbox"/> Appendix 1) Table – Census, Admissions & Discharges	
	<input type="checkbox"/> Appendix 2) Table – Key Performance Indicators	
	<input type="checkbox"/> Appendix 3) Table – Unusual Incident & Medication	
	<input type="checkbox"/> Appendix 4) Table – Restraint & Seclusion	
	<input type="checkbox"/> Appendix 5) Table – Demographic Information of Individuals in Care	
	<input type="checkbox"/> Appendix 6) Table – Unusual Incidents by Unit	

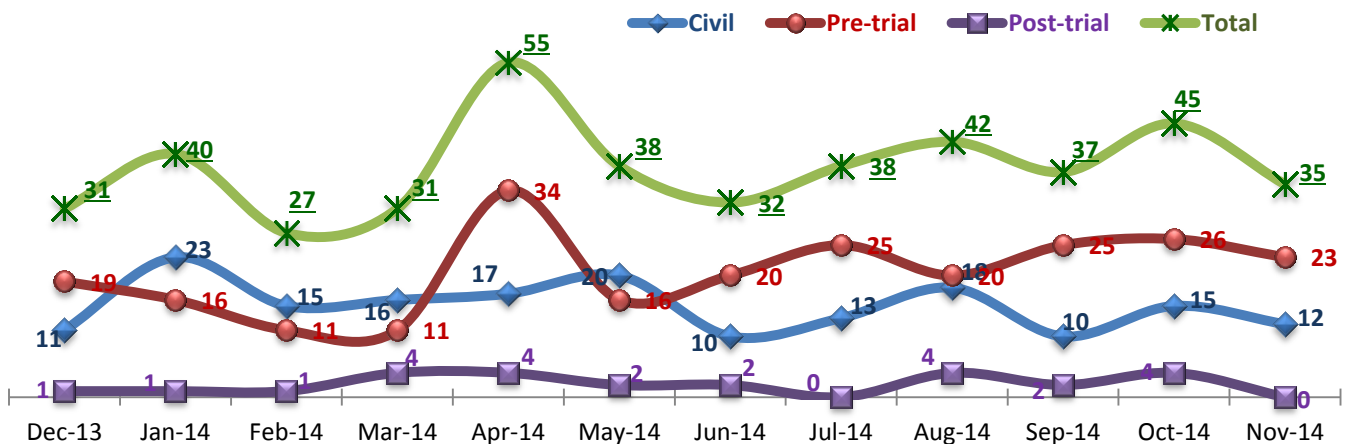
12/15/2014

Office of Statistics and Reporting (OSR)

Key Trends: Admission, Discharge, Transfer, Census, and Readmissions (1~6)

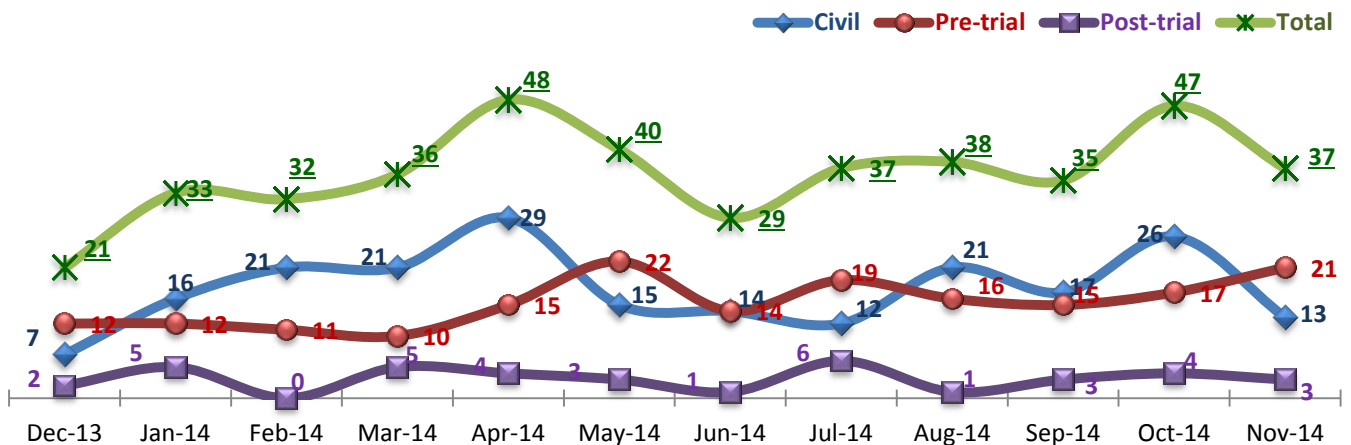
- In the month of November 2014, the number of admissions (35) decreased from October (45) and was lower than the number of discharges (37), lowering the average daily census (ADC) from 276 in October to 271 in November.
- The number of pre-trial admissions for competency evaluation consistently recorded 20 or above in each month since June 2014 while the number of monthly civil admissions remained below 20.
- The 30-day readmission rate in FY14 was very low at 2.3%, which is far below the NPR (6.9%)¹. However, it increased significantly recently: of the 47 discharges that occurred in October 2014, six (6) or 13% returned to the Hospital within 30 days from discharges.

1. Admissions to SEH



* Number of admissions to SEH inpatient program, including transfers from outpatient to inpatient program.

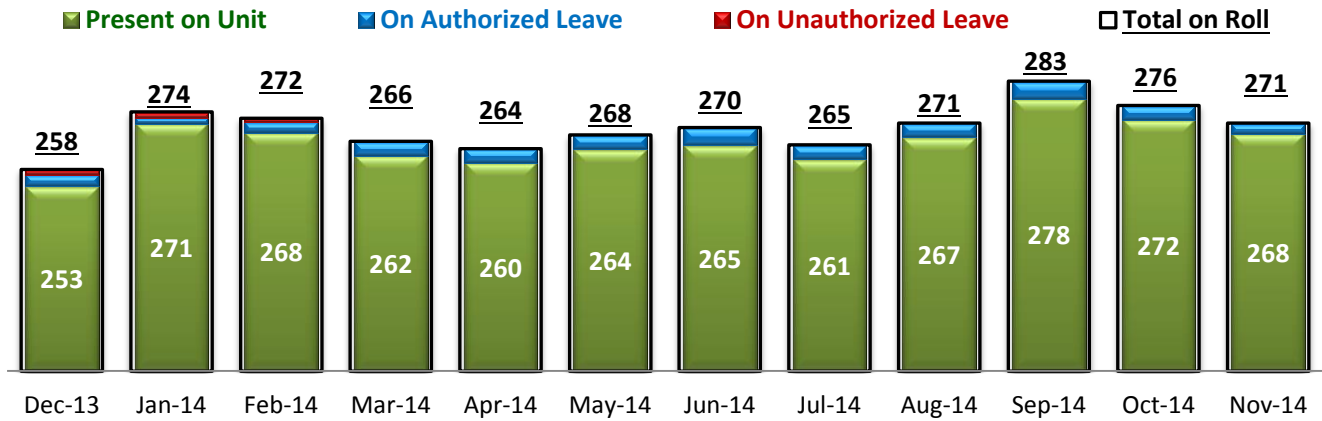
2. Discharges from SEH



* Number of discharges from SEH inpatient program, including transfers from inpatient to outpatient program.

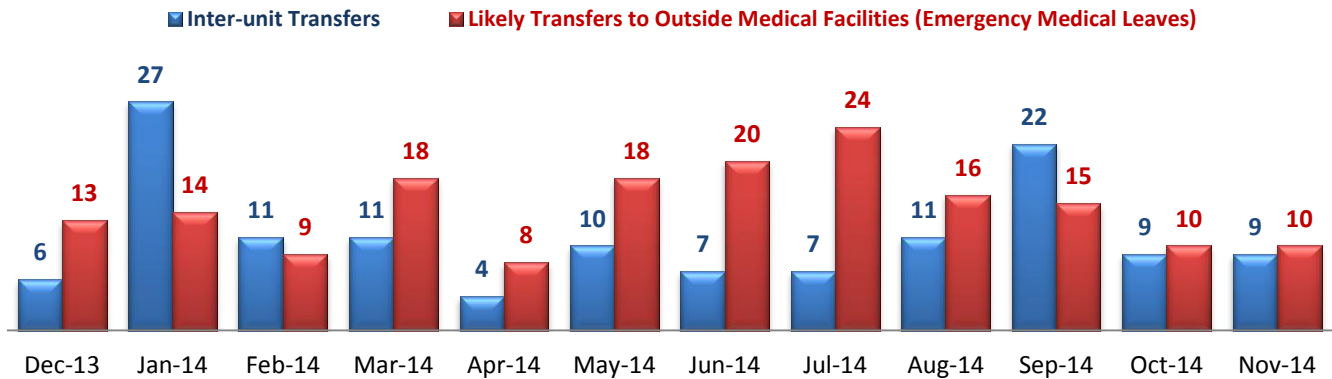
¹ NPR: National Public Rate as of June 2013 was published in November 2013 by National Association of State Mental Health Program Directors Research Institute (NRI), based on data collected from a number of state psychiatric hospitals nationwide.

3. Average Daily Census



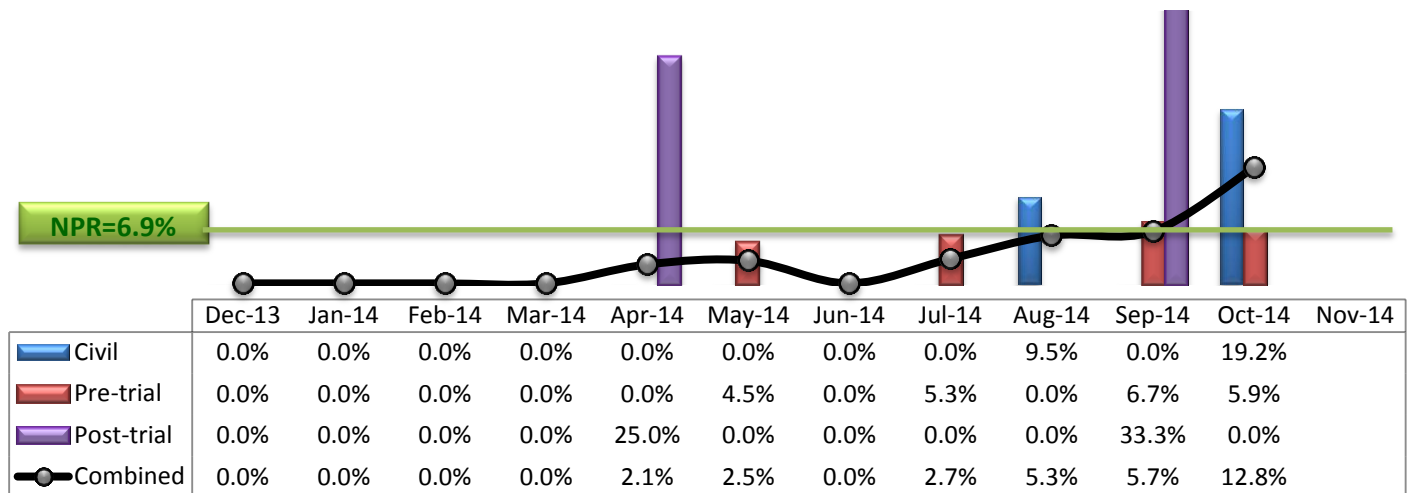
* Data above is the daily average number of individuals counted at 11:59 PM every day during each month.

4. Transfers



* Number of inter-unit transfers that occurred during month and number of emergency medical leaves that were initiated during month.

5. 30-Day Readmission Rate



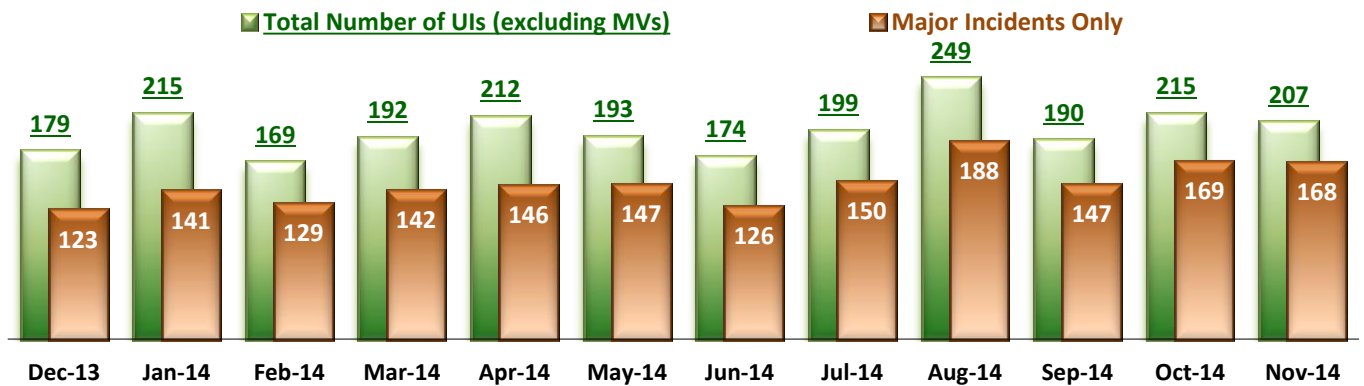
* Percent of discharges that returned to SEH within 30 days of discharges. It does not include those who may have been re-hospitalized at another psychiatric facility. This measure requires 30-day observation following discharge.

** The post-trial denominators (discharges) per month range only between one and six, making the monthly re-admission rate high when there is any. For example, in September 14, there were three post trial discharges, of which one (33%) was readmitted within 30 days.

Key Trends: Unusual Incidents (6~16)

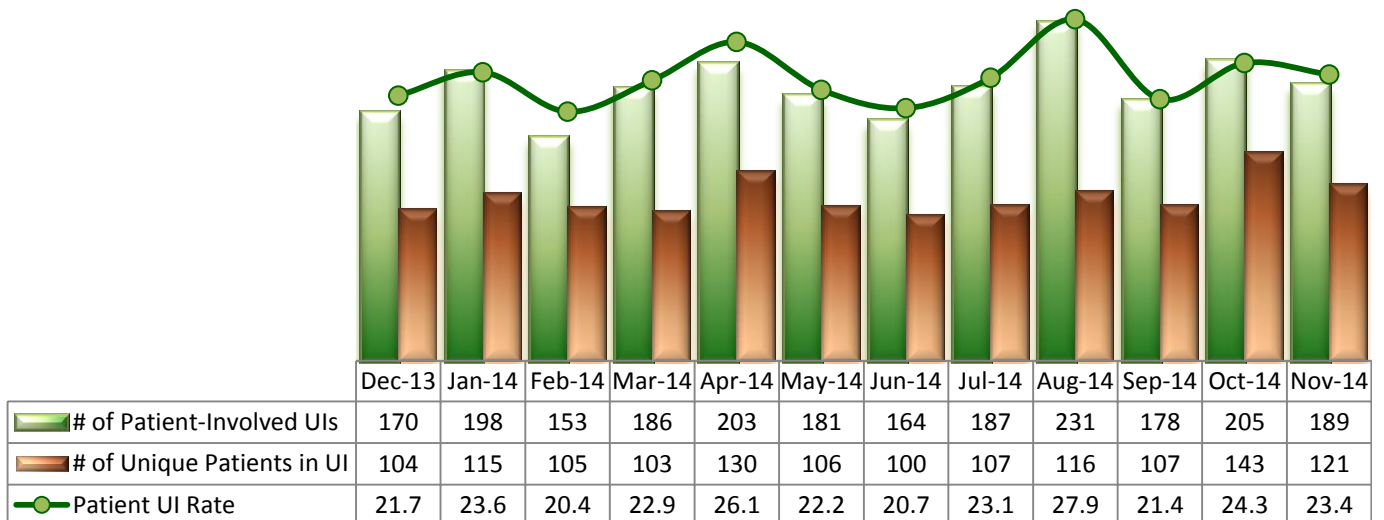
- The total number of unusual incidents (UIs) and the patient UI rate in November 2014 decreased to 207 and 23.4 per 1000 patient days, respectively, from October (215 and 24.3), mirroring the decrease in the number of admissions in November. However, it is still slightly above the average of the past 12 months (200 and 23.2).
- While the number of physical assaults significantly dropped from 67 in October to 42 in November, the number of incidents involving aggressive behaviors increased from 67 to 70 and psychiatric emergency incidents also remained high at 67.
- The number of fall incidents and injuries also slightly increased in November. Particularly, the number of staff injured noticeably increased: from 14 in October 2014 to 23 in November.
- The percentage of unique individuals secluded has been above NPR (2.4%) since August 2014 but the percentage of unique individuals restrained at SEH (1% in November 2014) remains far below the NPR (5.8%). Seclusion or restraint events frequently involve individuals in pre-trial legal status and the recent high number of pre-trial admissions and their frequent medication refusals may have contributed to this trend: 63% of seclusion or restraint events between August and October 2014 involved pre-trial admissions. Both the seclusion hours rate and the restraint hours rate at SEH (below 0.1 per 1000 patient hours) are much lower than NPR (0.44 and 0.71, respectively).
- There have been no elopements since July 2014 (for five months) and the elopement rate in the past 12 months is 0.07 per 1000 patient days, which is much lower than the national average (NPR 0.13).

6. Unusual Incidents



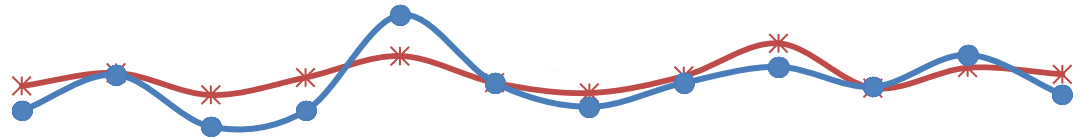
* A medication or vital sign refusal is no longer a UI since May 2014 and data above prior to May 2014 also excludes those incidents.

7. Patient-Involved Unusual Incidents



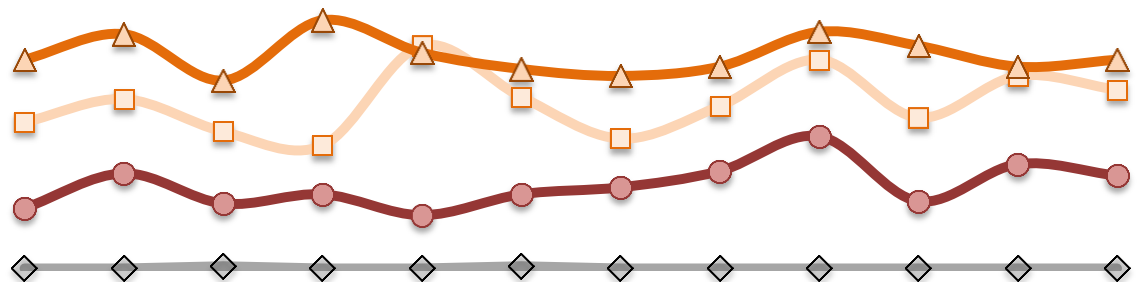
* The patient UI rate is the number of patient-involved unusual incidents reported for every 1000 inpatient days.

8. Admissions vs. Patient UI Rate



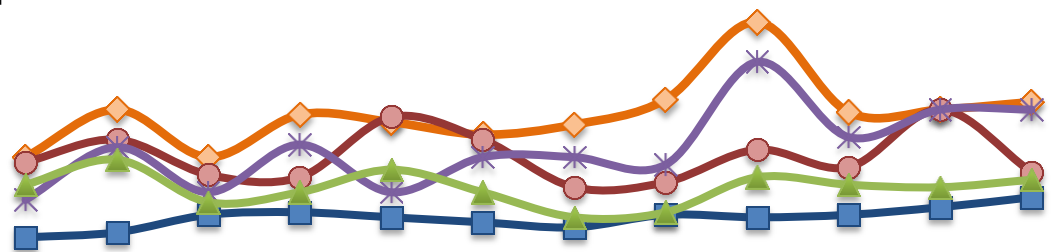
	Dec-13	Jan-14	Feb-14	Mar-14	Apr-14	May-14	Jun-14	Jul-14	Aug-14	Sep-14	Oct-14	Nov-14
✱ Patient UI Rate	21.7	23.6	20.4	22.9	26.1	22.2	20.7	23.1	27.9	21.4	24.3	23.4
● Admission	31	40	27	31	55	38	32	38	42	37	45	35

9. Unusual Incidents by Severity



	Dec-13	Jan-14	Feb-14	Mar-14	Apr-14	May-14	Jun-14	Jul-14	Aug-14	Sep-14	Oct-14	Nov-14
□ 1) Low	63	73	59	53	96	74	56	70	90	65	83	77
△ 2) Medium	90	101	81	107	93	86	83	87	102	96	87	90
● 3) High	26	41	28	32	23	32	35	42	57	29	45	40
◇ 4) Catstrp	0	0	1	0	0	1	0	0	0	0	0	0
Total UI	179	215	169	192	212	193	174	199	249	190	215	207

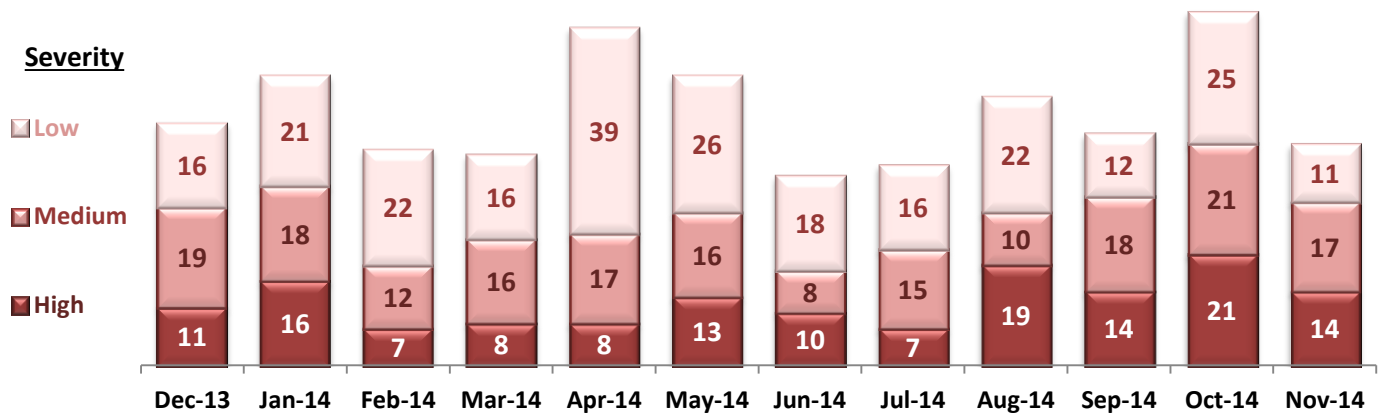
10. Selected Types of Incidents



	Dec-13	Jan-14	Feb-14	Mar-14	Apr-14	May-14	Jun-14	Jul-14	Aug-14	Sep-14	Oct-14	Nov-14
◇ Aggressive Behavior	48	67	48	65	62	57	61	71	102	66	67	70
● Physical Assault	46	55	41	40	64	55	36	38	51	44	67	42
✱ Pysch Emerg.	31	52	34	53	34	48	48	45	86	56	67	67
■ Fall	16	18	25	26	24	22	20	25	24	25	28	32
▲ Injury	37	47	30	34	43	34	24	26	40	37	36	39

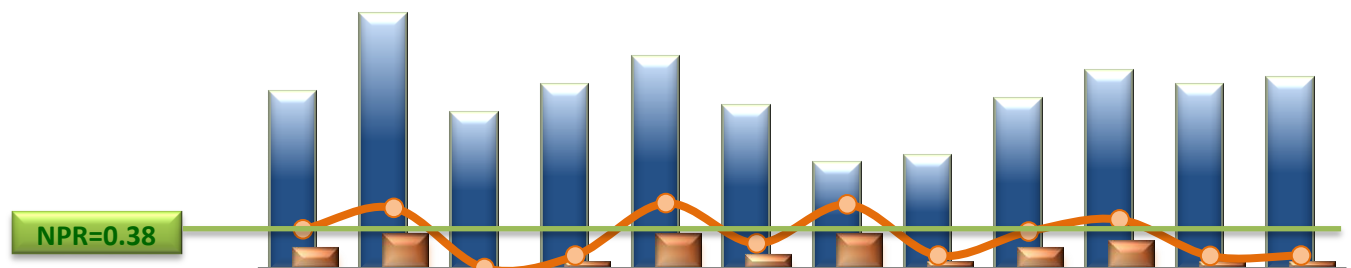
* These are incident types that are frequently reported. Some incidents may be counted in multiple categories. For example, a physical assault incident that accompanied psychiatric emergency and injury is counted under psychiatric emergency and injury as well as under physical assault. Injury is broadly defined to include any type of injuries regardless of the cause or severity level.

11. Physical Assaults by Severity



* Any physical assault that accompanies a code 13 or results in extensive injury needing off-unit treatment or transfer to ER is considered to be high severity, any physical assault that causes a minor injury that can be treated on unit is considered to be medium severity, and physical assault events that result in no injury are considered to be low severity.

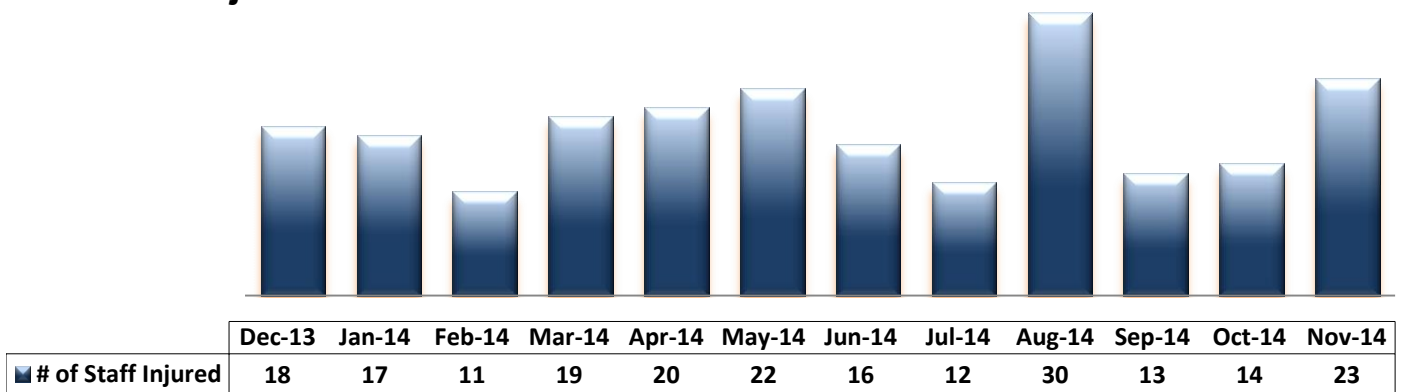
12. Patient Injuries



	Dec-13	Jan-14	Feb-14	Mar-14	Apr-14	May-14	Jun-14	Jul-14	Aug-14	Sep-14	Oct-14	Nov-14
Total Pts Injured	25	36	22	26	30	23	15	16	24	28	26	27
Major Pt Injuries*	3	5	0	1	5	2	5	1	3	4	1	1
Patient Injury Rate	0.38	0.60	0.00	0.12	0.64	0.24	0.63	0.12	0.36	0.48	0.12	0.12

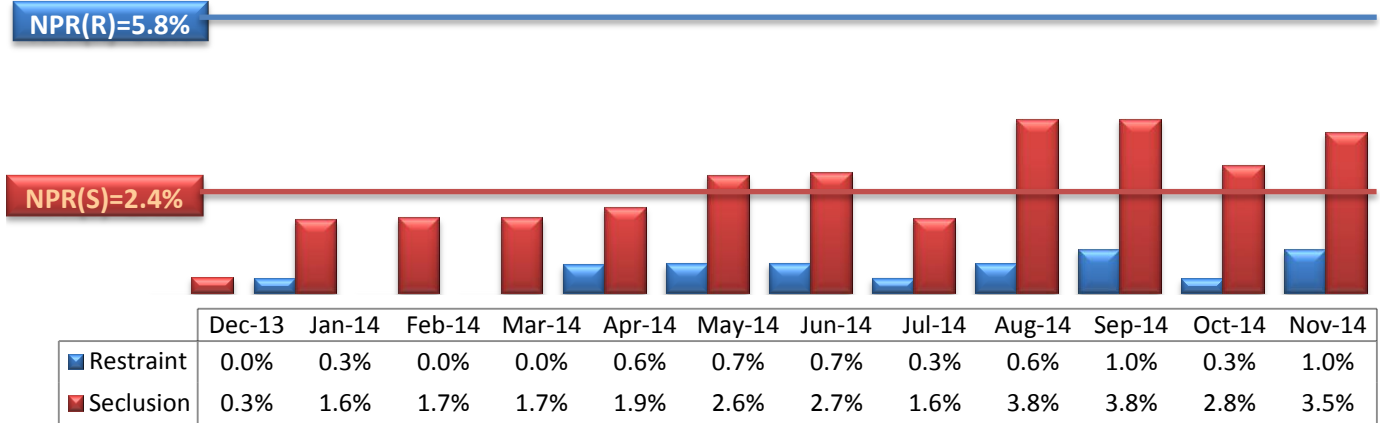
* Injury is broadly defined to include any type of injuries regardless of the cause or severity level. The total number of patients injured represents all of the reported injuries including minor injuries treated with first aid alone. However, the patient injury rate considers only the number of patient injuries that required beyond first-aid level treatment based on the NRI definition and the patient injury rate is the number of 'major' patient injuries per every 1000 inpatient days

13. Staff Injuries



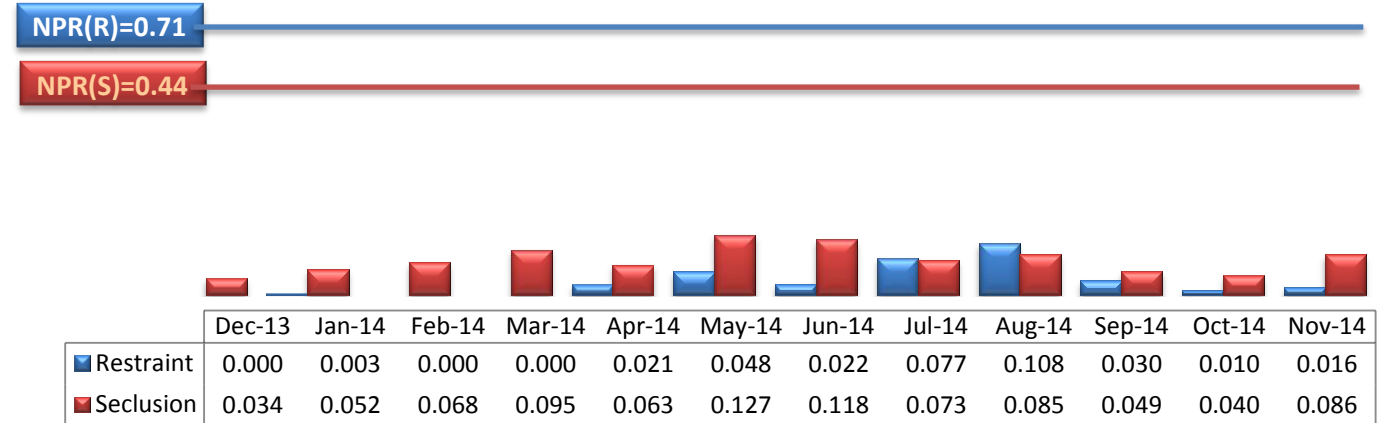
* Injury is broadly defined to include any type of injuries regardless of the cause or severity level. The total number of staff injured represents all of the reported staff injuries including minor injuries treated with first aid alone.

14. Percent of Patients Restrained or Secluded



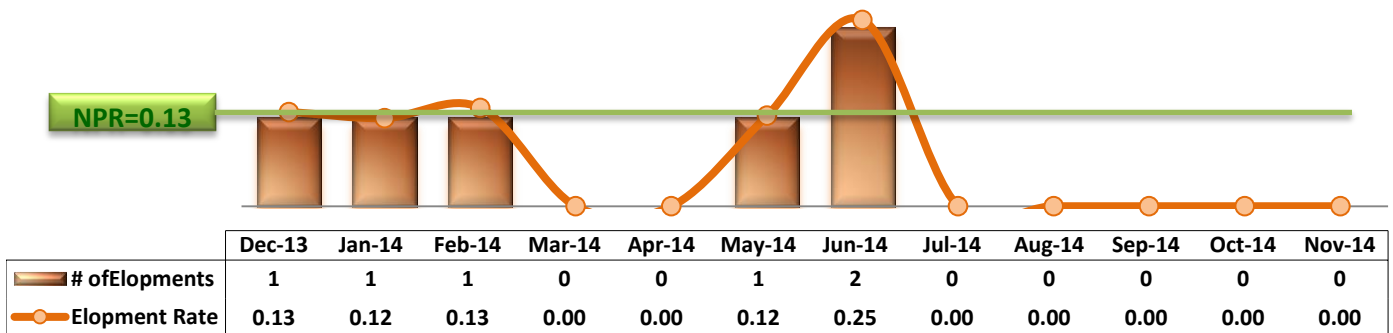
* Percent of unique patients who were restrained at least once and percent of unique patients who were secluded at least once. The denominator includes all individuals who were served in care >=1 day during month.

15. Restraint Hours Rate & Seclusion Hours Rate



* Restraint/Seclusion Hours Rate: Number of hours spent in restraint/seclusion for every 1000 inpatient hours.

16. Elopements



* It counts the total number of unauthorized leaves for any duration that were initiated during month and were recorded in Avatar. The elopement rate is the number of those unauthorized leaves that occurred for every 1000 inpatient days.

Key Trends: Medication Documentation, Medication Variance, ADR, and STAT (17~21)

- The number of reported MVs continued to decline in November (14). It is not clear, though, if this decrease reflects an actual decrease of MV events or a decrease of reporting.
- In November 2014, the number of reported ADRs also continued to be low at four (4), all of which were discovered by pharmacists through audits and none were reported by physicians or nurses.
- The rate of missing documentation on medication administration has declined slightly but gradually since July 2014.
- The medication refusal rate has been high since August 2014 and shows upward trend, reaching its highest level as of November (7.51%) since this data was available in January 2010.
- The number of STAT events (68) and the number of unique individuals involved (28) in one or more STAT events in November are lower than those in October (77 and 33, respectively) but still remained above the average (60 and 26) of the last 12 months.

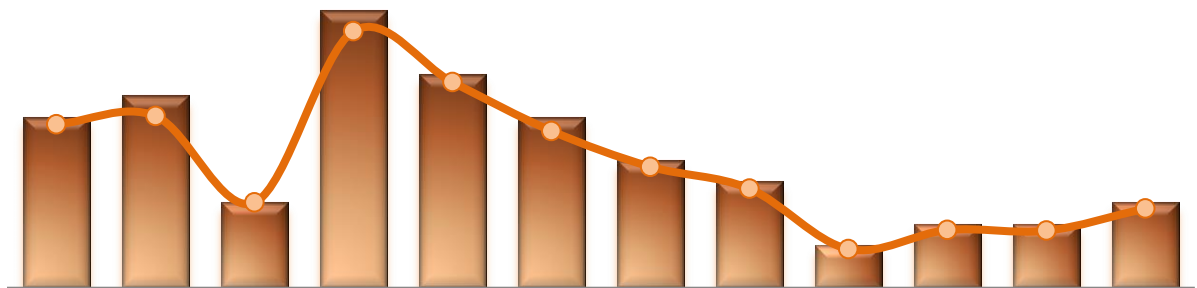
17. Reported Medication Variance Events



	Dec-13	Jan-14	Feb-14	Mar-14	Apr-14	May-14	Jun-14	Jul-14	Aug-14	Sep-14	Oct-14	Nov-14
# of MV Events	8	20	37	22	53	31	40	29	30	30	23	14
MV Rate	1.02	2.38	4.92	2.71	6.80	3.79	5.04	3.59	3.62	3.60	2.73	1.73

* MV Rate: Number of reported medication variance events that occurred for every 1000 inpatient days.

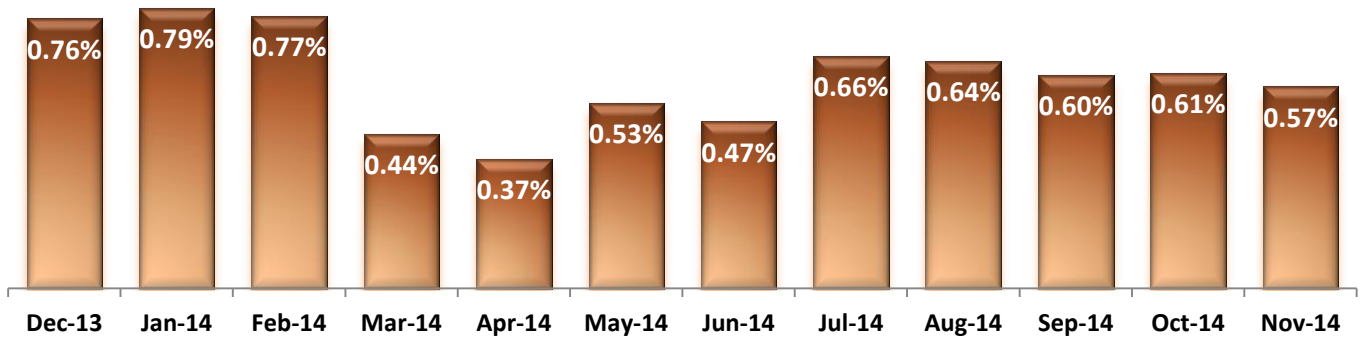
18. Reported Adverse Drug Reactions



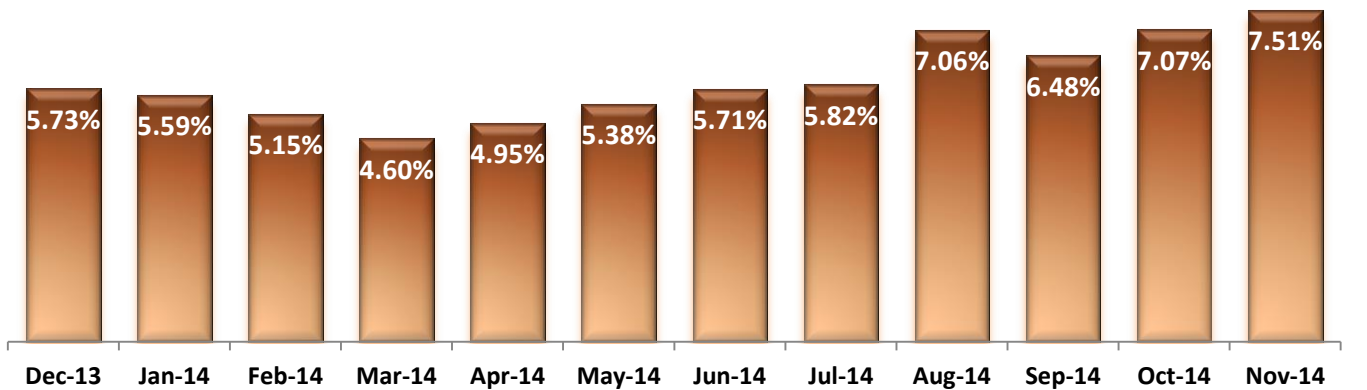
	Dec-13	Jan-14	Feb-14	Mar-14	Apr-14	May-14	Jun-14	Jul-14	Aug-14	Sep-14	Oct-14	Nov-14
# of ADRs	8	9	4	13	10	8	6	5	2	3	3	4
ADR Rate	1.02	1.07	0.53	1.60	1.28	0.98	0.76	0.62	0.24	0.36	0.36	0.50

* ADR Rate: Number of reported adverse drug reaction events that occurred for every 1000 inpatient days.

19. Percent of Missing Documentation on Med-Administration

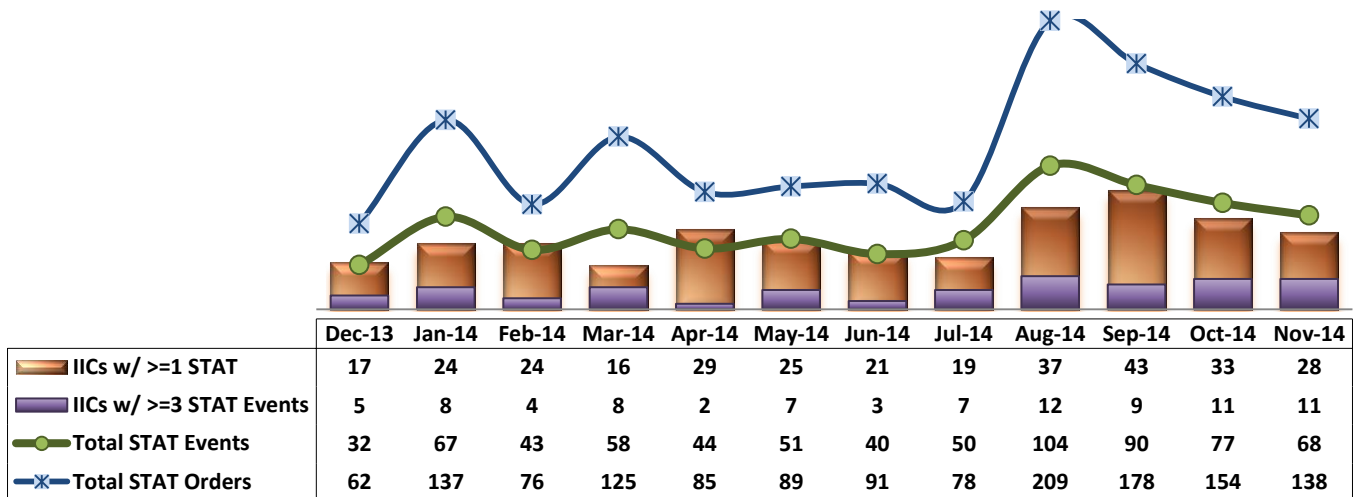


20. Medication Refusal Rate*



* Medication Refusal Rate: the number of refused medication doses divided by the total number of doses scheduled for administration.

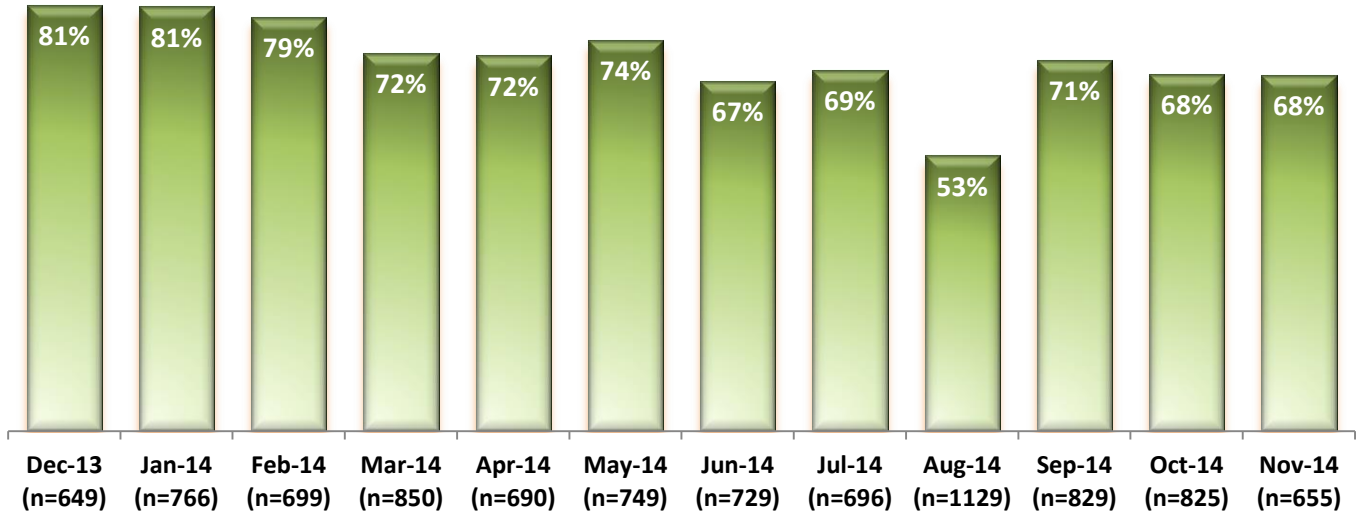
21. Number of STAT Events and Individuals Involved



Key Trends: Environment of Care (22)

- In the past 12 months, on average, the Hospital received a total of 772 work orders per month (or 25 per day) through SiteFM. Of those, 70% were completed within 3 days.
- In the months of October and November, 68% of SiteFM work orders were completed within 3 days.

22. Percentage of SiteFM Work Orders Completed within 3 Days



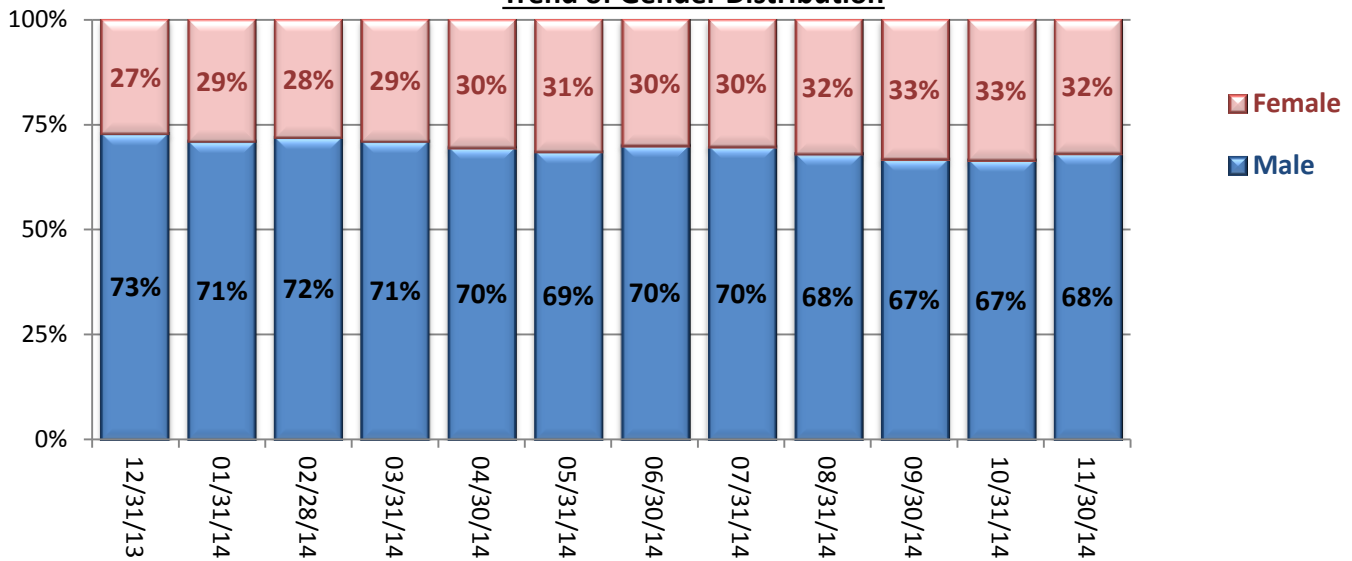
* This data has been analyzed for the first time as of early December 2014.

Key Trends: Demographics, Legal Status, and Length of Stay (22)

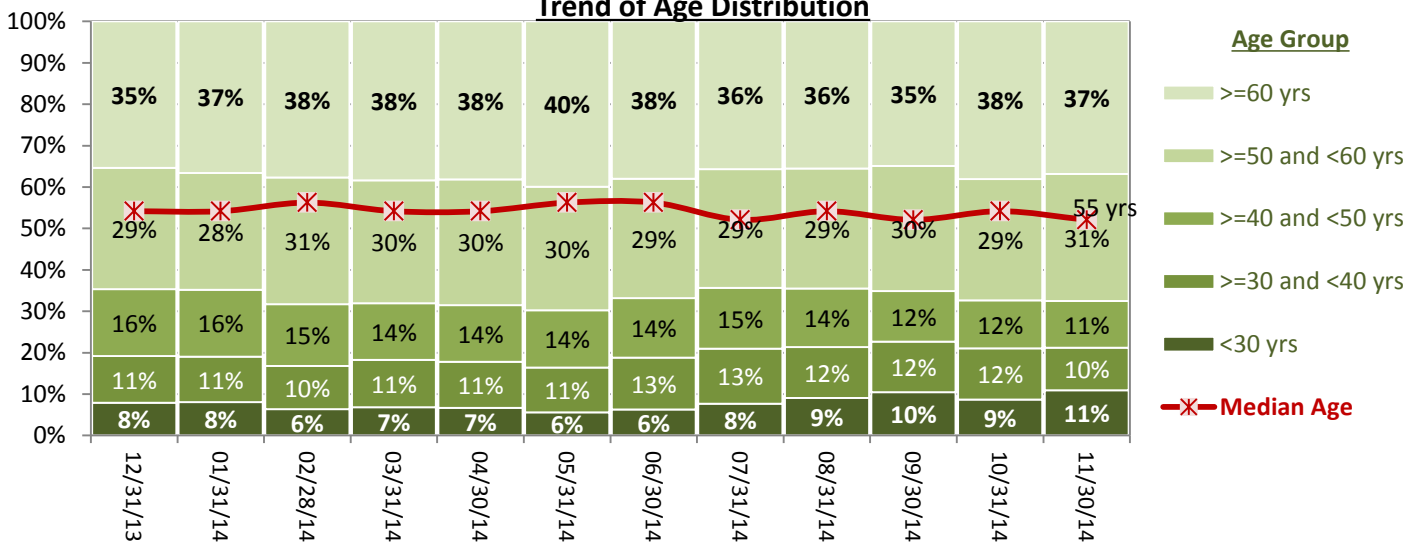
- The proportion of females gradually increased throughout the year. As of October 2013, 26% of individuals in our care were female and as of November 30, 2014, females composed 32% of all individuals in care.
- About two out of three individuals in care are 50 years or older. The median age is 55 years old as of November 30, 2014.
- The number of pre-trial admissions significantly increased during the last quarter of FY14, the proportion of forensic pre-trial population increased accordingly: from 15% as of May 31, 2014 to 26% in October and November 2014, which is the highest level since PRISM tracked this data since December 2010.
- The median length of stay (LOS) of individuals remaining in care decreased gradually since February 2014, falling to the lowest level (394 days or 13 months) in September 2014. It slightly increased in October and November but a large number of admissions over the past 6 months triggered an increase in the proportion of recent admissions among the total population in care. Consequently, more individuals in care have shorter LOS than before, lowering the median LOS of all individuals in care.

23. Demographics and Length of Stay

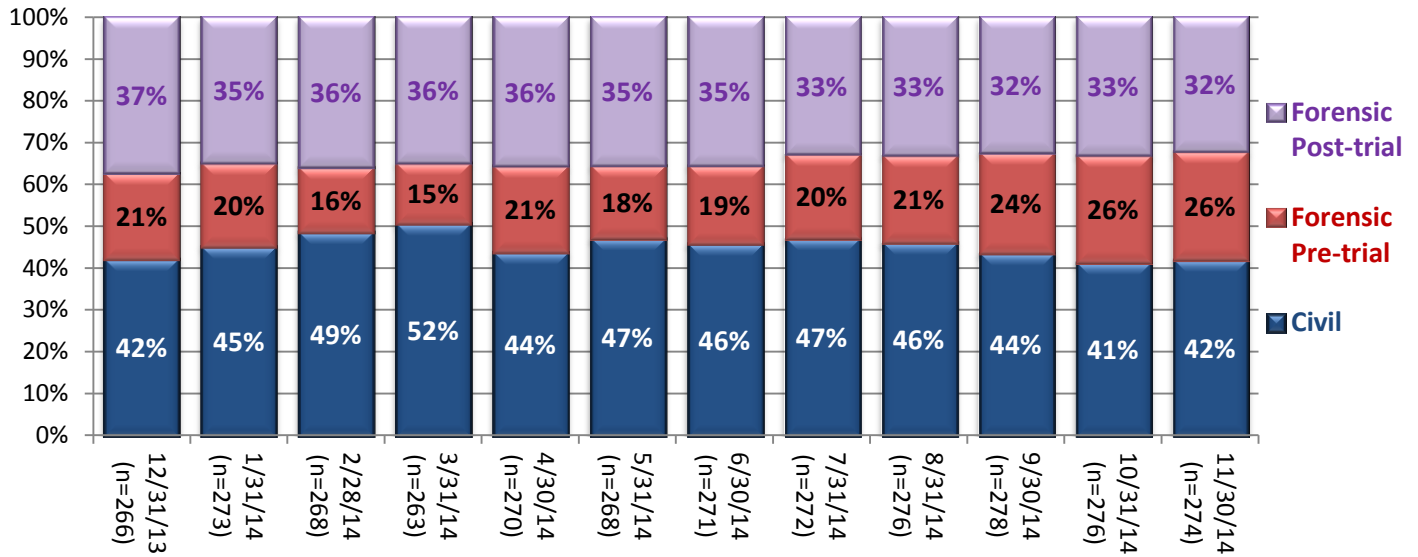
Trend of Gender Distribution



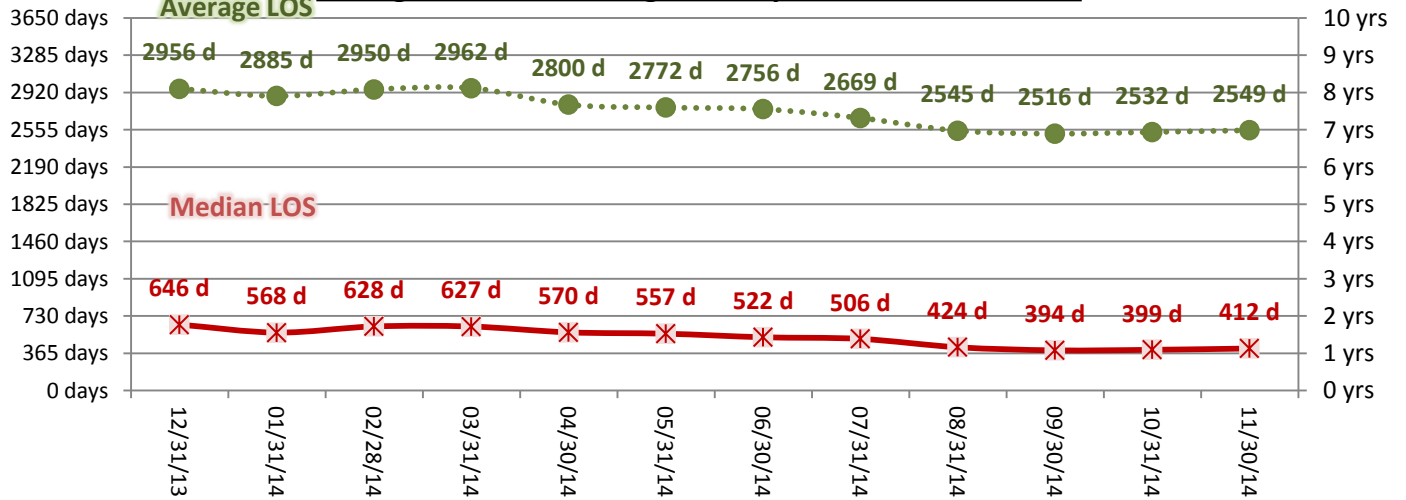
Trend of Age Distribution



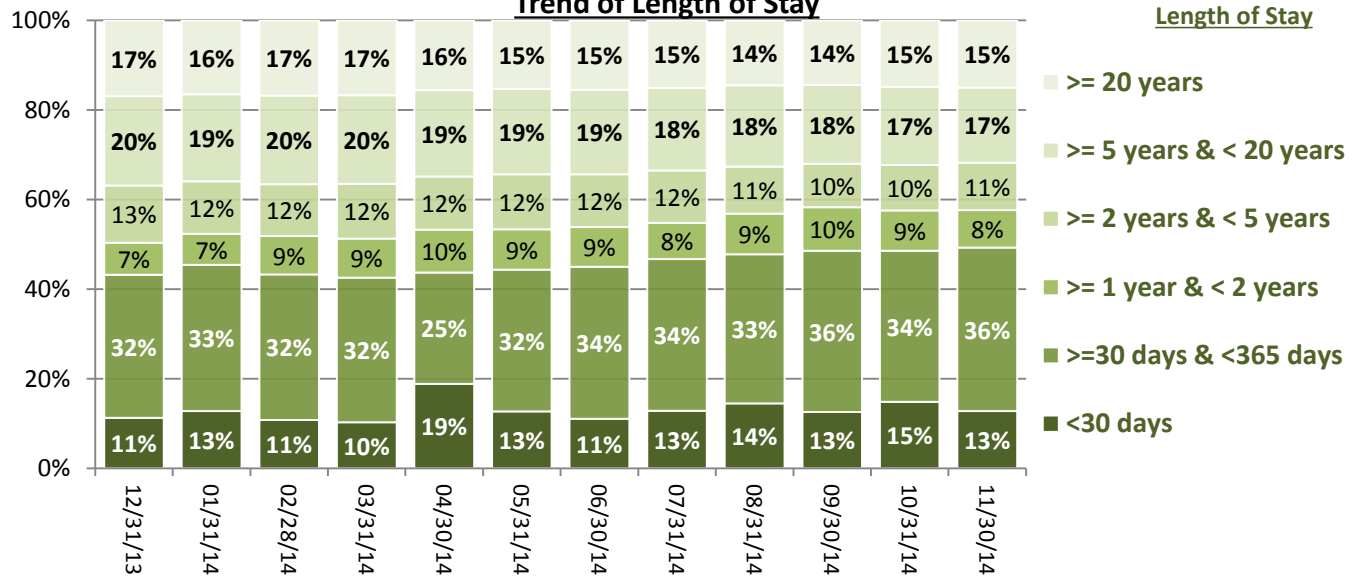
Trend of Legal Status Distribution



Average and Median Length of Stay for Individuals in Care



Trend of Length of Stay



Performance Related Information for Staff & Managers

1. Census, Admissions, Discharges & Transfers

Data Source: Avatar

Updated as of 12/08/14

Category		Dec-13	Jan-14	Feb-14	Mar-14	Apr-14	May-14	Jun-14	Jul-14	Aug-14	Sep-14	Oct-14	Nov-14	Monthly Average	Total (12mths)	Figure
Admissions	Civil	11	23	15	16	17	20	10	13	18	10	15	12	15	180	Figure 1
	Pre-trial	19	16	11	11	34	16	20	25	20	25	26	23	21	246	
	Post-trial	1	1	1	4	4	2	2	0	4	2	4	0	2	25	
	Total	31	40	27	31	55	38	32	38	42	37	45	35	38	451	
Discharges	Civil	7	16	21	21	29	15	14	12	21	17	26	13	18	212	Figure 2
	Pre-trial	12	12	11	10	15	22	14	19	16	15	17	21	15	184	
	Post-trial	2	5	0	5	4	3	1	6	1	3	4	3	3	37	
	Total	21	33	32	36	48	40	29	37	38	35	47	37	36	433	
Net Increase During Month	Civil	4	7	-6	-5	-12	5	-4	1	-3	-7	-11	-1		-32	
	Pre-trial	7	4	0	1	19	-6	6	6	4	10	9	2		62	
	Post-trial	-1	-4	1	-1	0	-1	1	-6	3	-1	0	-3		-12	
	Total	10	7	-5	-5	7	-2	3	1	4	2	-2	-2		18	
All Individuals on Roll at End of Month		266	273	268	263	270	268	271	272	276	278	276	274	271		
a. Present on Unit		262	269	263	256	268	260	267	271	270	275	272	270	267		
b. On AL		2	3	5	7	2	8	4	1	6	3	4	4	4		
c. On UL		2	1	0	0	0	0	0	0	0	0	0	0	0		
All Individuals on Roll: Daily Average during Month*		258	274	272	266	264	268	270	265	271	283	276	271	270		Figure 3
a. Present on Unit		253	271	268	262	260	264	265	261	267	278	272	268	266		
b. On AL		3	2	3	4	4	4	5	4	4	5	4	3	4		
c. On UL		1	2	1	0	0	0	0	0	0	0	0	0	0		
Number of Days		31	31	28	31	30	31	30	31	31	30	31	30		365	
Patient Days**		7844	8394	7514	8115	7789	8171	7941	8084	8277	8326	8422	8078	8080	96955	
Inter-Unit Transfers during Month		6	27	11	11	4	10	7	7	11	22	9	9	11	134	Figure 4
Medical Leaves Initiated during Month	Emergency	13	14	9	18	8	18	20	24	16	15	10	10	15	175	
	Non-Emer	34	25	32	25	30	34	81	88	67	68	62	71	51	617	
	Total	47	39	41	43	38	52	101	112	83	83	72	81	66	792	
Non-Medical Leaves Initiated during Month		138	142	141	175	147	230	439	430	386	397	431	390	287	3446	
UL Initiated during Month		1	1	1	0	0	1	2	0	0	0	0	0	1	6	
Total Unique Patients Served during Month		287	306	300	299	315	306	300	305	312	312	318	310	306		
30 Day Readmission ***	Civil	0	0	0	0	0	0	0	0	2	0	5		1	7	
	Pre-trial	0	0	0	0	0	1	0	1	0	1	1		0	4	
	Post-trial	0	0	0	0	1	0	0	0	0	1	0		0	2	
	Total	0	0	0	0	1	1	0	1	2	2	6		1	13	

* This is the average number of individuals served on a given day for the respective month. Due to rounding from average calculation, numbers from its subcategories a, b, & c may not add up to the total number on this row.

** It counts the number of patients who are present on the unit and excludes those on authorized or unauthorized leave at 11:59pm on a given day.

*** Number of patients returning within 30 days of discharges that occurred during month.

Performance Related Information for Staff & Managers

2. Key Performance Indicators

Data Source: UI DB, MV DB, ADR DB, Restraint/Seclusion Log, and Avatar

Updated as of 12/08/14

Category	Dec-13	Jan-14	Feb-14	Mar-14	Apr-14	May-14	Jun-14	Jul-14	Aug-14	Sep-14	Oct-14	Nov-14	Monthly Average	NPR* (Jun-13)	Figure
30 Day Readmit (Discharge Cohort)**	Civil	0.0%	0.0%	0.0%	0.0%	0.0%	0.0%	0.0%	9.5%	0.0%	19.2%		3.6%		Figure 5
	Pre-trial	0.0%	0.0%	0.0%	0.0%	0.0%	4.5%	0.0%	5.3%	0.0%	6.7%	5.9%	2.4%		
	Post-trial	0.0%	0.0%	N/A	0.0%	25.0%	0.0%	0.0%	0.0%	0.0%	33.3%	0.0%	5.9%		
	Combined	0.0%	0.0%	0.0%	0.0%	2.1%	2.5%	0.0%	2.7%	5.3%	5.7%	12.8%	3.3%	6.9%	
Number of Unusual Incidents*	179	215	169	192	212	193	174	199	249	190	215	207	200		Figure 6
Patient Unusual Incident Rate	21.7	23.6	20.4	22.9	26.1	22.2	20.7	23.1	27.9	21.4	24.3	23.4	23.2		Figure 7
UI by Severity	Catastrophe	0	0	1	0	0	1	0	0	0	0	0	0		Figure 9
	High	26	41	28	32	23	32	35	42	57	29	45	40	36	
	Medium	90	101	81	107	93	86	83	87	102	96	87	90	92	
	Low	63	73	59	53	96	74	56	70	90	65	83	77	72	
Physical Assault Incident Rate	5.9	6.6	5.5	4.9	8.2	6.7	4.5	4.7	6.2	5.3	8.0	5.2	6.0		
Selected Types of Incidents	Physical Assault	46	55	41	40	64	55	36	38	51	44	67	42	48	Figure 10
	Aggressive Behav.	48	67	48	65	62	57	61	71	102	66	67	70	65	
	Psych Emergency	31	52	34	53	34	48	48	45	86	56	67	67	52	
	Fall	16	18	25	26	24	22	20	25	24	25	28	32	24	
	Injury	37	47	30	34	43	34	24	26	40	37	36	39	36	
Physical Assaults by Severity	High	11	16	7	8	8	13	10	7	19	14	21	14	13	Figure 11
	Medium	19	18	12	16	17	16	8	15	10	18	21	17	16	
	Low	16	21	22	16	39	26	18	16	22	12	25	11	20	
Patient Injury Rate***	0.38	0.60	0.00	0.12	0.64	0.24	0.63	0.12	0.36	0.48	0.12	0.12	0.32	0.38	Figure 12
Patients with Major Injuries***	3	5	0	1	5	2	5	1	3	4	1	1	3		
Total Patients Injured***	25	36	22	26	30	23	15	16	24	28	26	27	25		
Total Staff Injured***	18	17	11	19	20	22	16	12	30	13	14	23	18		Figure 13
Elopement Rate	0.13	0.12	0.13	0.00	0.00	0.12	0.25	0.00	0.00	0.00	0.00	0.00	0.07	0.13	Figure 16
Medication Variance Rate	1.02	2.38	4.92	2.71	6.80	3.79	5.04	3.59	3.62	3.60	2.73	1.73	3.48		Figure 17
Adverse Drug Reaction Rate	1.02	1.07	0.53	1.60	1.28	0.98	0.76	0.62	0.24	0.36	0.36	0.50	0.77		Figure 18
Missing Med-Admin Documentation	0.76%	0.79%	0.77%	0.44%	0.37%	0.53%	0.47%	0.66%	0.64%	0.60%	0.61%	0.57%	0.60%		Figure 19
Percent of Medication Refusal	5.73%	5.59%	5.15%	4.60%	4.95%	5.38%	5.71%	5.82%	7.06%	6.48%	7.07%	7.51%	5.92%		Figure 20
Percent of Patients Restrained	0.0%	0.3%	0.0%	0.0%	0.6%	0.7%	0.7%	0.3%	0.6%	1.0%	0.3%	1.0%	0.5%	5.8%	Figure 14
Percent of Patients Secluded	0.3%	1.6%	1.7%	1.7%	1.9%	2.6%	2.7%	1.6%	3.8%	3.8%	2.8%	3.5%	2.4%	2.4%	
Restraint Hours Rate	0.000	0.003	0.000	0.000	0.021	0.048	0.022	0.077	0.108	0.030	0.010	0.016	0.028	0.71	Figure 15
Seclusion Hours Rate	0.034	0.052	0.068	0.095	0.063	0.127	0.118	0.073	0.085	0.049	0.040	0.086	0.074	0.44	
SiteFM Work Orders Completed within 3 days	81%	81%	79%	72%	72%	74%	67%	69%	53%	71%	68%	68%	70%		Figure 22
Total SiteFM Work Orders	527	620	552	612	494	558	486	479	593	587	562	444	543	772	

* National Public Rate, NASMHPD Research Institute, National Research Institute (NRI), Data as of June 2013, Published in November 2013.

** Percentage of patients returning within 30 days of discharges that occurred during month

*** Refer to the next page [UI & Medication]

Performance Related Information for Staff & Managers

3. Unusual Incident & Medication

Data Source: UI DB, MV DB, ADR DB, and Avatar

Updated as of 12/08/14

Category	Dec-13	Jan-14	Feb-14	Mar-14	Apr-14	May-14	Jun-14	Jul-14	Aug-14	Sep-14	Oct-14	Nov-14	Monthly Average	Total (12mths)	NPR* (Jun-13)	
Unusual Incidents (excluding MV)**	Total UIs	179	215	169	192	212	193	174	199	249	190	215	207	200	2394	
	Major UIs Only	123	141	129	142	146	147	126	150	188	147	169	168	148	1776	
	Pt Involved UI Only	170	198	153	186	203	181	164	187	231	178	205	189	187	2245	
	Patient UI Rate	21.7	23.6	20.4	22.9	26.1	22.2	20.7	23.1	27.9	21.4	24.3	23.4	23.2		
	Unique Pts Involved in UI	104	115	105	103	130	106	100	107	116	107	143	121	113	1357	
Selected Types of Incidents	Physical Assault	46	55	41	40	64	55	36	38	51	44	67	42	48	579	
	Aggressive Behavior	48	67	48	65	62	57	61	71	102	66	67	70	65	784	
	Psych Emergency	31	52	34	53	34	48	48	45	86	56	67	67	52	621	
	Fall	16	18	25	26	24	22	20	25	24	25	28	32	24	285	
	Injury	37	47	30	34	43	34	24	26	40	37	36	39	36	427	
Physical Assault Rate	5.9	6.6	5.5	4.9	8.2	6.7	4.5	4.7	6.2	5.3	8.0	5.2	6.0			
UI by Severity	Catastrophe	0	0	1	0	0	1	0	0	0	0	0	0	0	2	
	High	26	41	28	32	23	32	35	42	57	29	45	40	36	430	
	Medium	90	101	81	107	93	86	83	87	102	96	87	90	92	1103	
	Low	63	73	59	53	96	74	56	70	90	65	83	77	72	859	
Physical Assaults by Severity	High	11	16	7	8	8	13	10	7	19	14	21	14	13	148	
	Medium	19	18	12	16	17	16	8	15	10	18	21	17	16	187	
	Low	16	21	22	16	39	26	18	16	22	12	25	11	20	244	
Total Patients Injured***	25	36	22	26	30	23	15	16	24	28	26	27	25	298		
Patients with Major Injuries***	3	5	0	1	5	2	5	1	3	4	1	1	3	31		
Patient Injury Rate***	0.38	0.60	0.00	0.12	0.64	0.24	0.63	0.12	0.36	0.48	0.12	0.12	0.32		0.38	
Total Staff Injured**	18	17	11	19	20	22	16	12	30	13	14	23	18			
Total UIs Documented in Avatar	1	1	1	0	0	1	2	0	0	0	0	0	1	7		
Elopement Rate	0.13	0.12	0.13	0.00	0.00	0.12	0.25	0.00	0.00	0.00	0.00	0.00	0.07		0.13	
Med Variance (MV) Reports**	8	20	37	22	53	31	40	29	30	30	23	14	28	337		
MV Rate	1.02	2.38	4.92	2.71	6.80	3.79	5.04	3.59	3.62	3.60	2.73	1.73	3.48			
Adverse Drug Reactions Reports	8	9	4	13	10	8	6	5	2	3	3	4	6	75		
ADR Rate	1.02	1.07	0.53	1.60	1.28	0.98	0.76	0.62	0.24	0.36	0.36	0.50	0.77			
Total Med Administrations Scheduled	102249	108474	98616	107326	104201	108187	104448	107179	105835	103590	105994	104198		1260297		
Total Missing Documentations	780	860	759	469	381	568	493	704	680	626	647	595		7562		
Percent of Missing Documentation	0.76%	0.79%	0.77%	0.44%	0.37%	0.53%	0.47%	0.66%	0.64%	0.60%	0.61%	0.57%		0.60%		
Total Medication Doses Refused	5861	6059	5080	4937	5163	5823	5969	6239	7472	6712	7493	7823		74631		
Percent of Medication Refusal	5.73%	5.59%	5.15%	4.60%	4.95%	5.38%	5.71%	5.82%	7.06%	6.48%	7.07%	7.51%		5.92%		
Total STAT Orders	62	137	76	125	85	89	91	78	209	178	154	138	119		Figure 21	
Total STAT Events****	32	67	43	58	44	51	40	50	104	90	77	68	60			
Total Individuals Involved >=1 STAT	17	24	24	16	29	25	21	19	37	43	33	28	26			
Total Patients with >=3 STAT Events	5	8	4	8	2	7	3	7	12	9	11	11	7			

* National Public Rate, NASMHPD Research Institute, National Research Institute (NRI), Data as of June 2013, Published in November 2013.

** Numbers may change if any additional UI report is made after the data run date from UI database (around the 15th of the following month); According to the revised UI policy as of November 4, 2013, a medication variance (MV) incident became no longer considered to be an unusual incident, and a medication or vital sign refusal incident is not longer an UI as of May 2014. UI data for the past 12 months in this report has been updated to reflect this change and reanalyzed in order to show the UI trend in consistent logic.

*** Injury is broadly defined to include any type of injuries regardless of the cause or severity level. The total number of patients injured represents all of the reported injuries including minor injuries treated with first aid alone. However, the patient injury rate considers only the number of patient injuries that required beyond first-aid level treatment based on the NRI definition and the patient injury rate is the number of 'major' patient injuries per every 1000 inpatient days

**** One STAT event may involve more than one STAT order for the same patient. Any orders placed within 20 minute timeframe are considered to belong to one STAT event.

Performance Related Information for Staff & Managers

4. Restraint & Seclusion

Data Source: Restraint/Seclusion Log and UI DB (for # of total events and patients) and Avatar (for patient days/hours)

Updated as of 12/08/14

Category	Dec-13	Jan-14	Feb-14	Mar-14	Apr-14	May-14	Jun-14	Jul-14	Aug-14	Sep-14	Oct-14	Nov-14	Monthly Average	Total (12mths)	NPR* (Jun-13)
Number of Restraint Events	0	1	0	0	2	6	4	7	7	6	1	3	3.1	37	
Number of Unique Patients Restrained	0	1	0	0	2	2	2	1	2	3	1	3	1.4		
Percentage of Patients Restrained	0.0%	0.3%	0.0%	0.0%	0.6%	0.7%	0.7%	0.3%	0.6%	1.0%	0.3%	1.0%	0.5%		5.8%
Total Restraint Hours (h:mm)	0:00	0:35	0:00	0:00	4:00	9:30	4:16	15:00	21:25	6:00	2:00	3:06	5:29	65:52	
Restraint Hours Rate	0.000	0.003	0.000	0.000	0.021	0.048	0.022	0.077	0.108	0.030	0.010	0.016	0.028		0.71
Number of Seclusion Events	6	6	13	15	10	20	22	14	21	17	12	19	14.6	175	
Number of Unique Patients Secluded	1	5	5	5	6	8	8	5	12	12	9	11	7.3		
Percentage of Patients Secluded	0.3%	1.6%	1.7%	1.7%	1.9%	2.6%	2.7%	1.6%	3.8%	3.8%	2.8%	3.5%	2.4%		2.4%
Total Seclusion Hours (h:mm)	6:20	10:34	12:15	18:27	11:47	24:49	22:32	14:14	16:51	9:52	8:01	16:36	14:21	172:18	
Seclusion Hours Rate	0.034	0.052	0.068	0.095	0.063	0.127	0.118	0.073	0.085	0.049	0.040	0.086	0.074		0.44

* National Public Rate, NASMHPD Research Institute, National Research Institute (NRI), Data as of June 2013, Published in November 2013.

Performance Related Information for Staff & Managers

5. Demographic Information of Individuals in Care

Data Source: Avatar

Updated as of 12/08/14

Category	Sub-group	Dec-13	Jan-14	Feb-14	Mar-14	Apr-14	May-14	Jun-14	Jul-14	Aug-14	Sep-14	Oct-14	Nov-14	Monthly Average	Percent*
Total Active (on Roll) at End of Month*		266	273	268	263	270	268	271	272	276	278	276	274	271	
Gender	Female	72	79	75	76	82	84	81	82	88	92	92	87	83	30.4%
	Male	194	194	193	187	188	184	190	190	188	186	184	187	189	69.6%
Age	Median Age (Years)	56 yrs	56 yrs	57 yrs	56 yrs	56 yrs	57 yrs	57 yrs	55 yrs	56 yrs	55 yrs	56 yrs	55 yrs	56 yrs	
	<30 years old	21	22	17	18	18	15	17	21	25	29	24	30	21	7.9%
	>=30 and <40 years old	30	30	28	30	30	29	34	36	34	34	34	28	31	11.6%
	>=40 and <50 years old	43	44	40	36	37	37	39	40	39	34	32	31	38	13.9%
	>=50 and <60 years old	78	77	82	78	82	80	78	78	80	84	81	84	80	29.6%
	>=60 years old	94	100	101	101	103	107	103	97	98	97	105	101	101	37.1%
Legal Status of Individuals on Roll at End of Month	Emergency	26	34	33	35	31	36	33	28	25	27	22	21	29	10.8%
	Inpatient Commitment	23	26	28	28	30	31	33	36	39	34	35	35	32	11.6%
	Outpatient Commitment	22	22	22	32	19	18	22	28	23	23	22	27	23	8.6%
	Voluntary	41	41	47	43	38	41	36	36	40	37	35	32	39	14.3%
	Civil Sub-total	112	123	130	138	118	126	124	128	127	121	114	115	123	45.3%
	DC Exam	54	54	41	38	35	30	30	28	30	31	40	35	37	13.7%
	Mentally Incompetent	1	1	1	2	21	17	21	27	28	36	31	36	19	6.8%
	Forensic Pre-trial Sub-total	55	55	42	40	56	47	51	55	58	67	71	71	56	20.5%
	NGBRI - DC	82	77	78	77	79	79	80	74	75	74	76	74	77	28.4%
	NGBRI - US	12	13	13	13	12	12	12	11	11	11	10	10	12	4.3%
NGBRI - VI	1	1	1	1	1	1	1	1	1	1	1	1	1	0.4%	
Dual Commitment	2	2	2	2	2	1	1	1	2	2	2	1	2	0.6%	
Sexual Psychopath (Miller Act)	2	2	2	2	2	2	2	2	2	2	2	2	2	0.7%	
Forensic Post-trial Sub-total	99	95	96	95	96	95	96	89	91	90	91	88	93	34.4%	
Length of Stay	Median LOS (Days)	646 d	568 d	628 d	627 d	570 d	557 d	522 d	506 d	424 d	394 d	399 d	412 d	521 d	
	Average LOS (Days)	2956 d	2885 d	2950 d	2962 d	2800 d	2772 d	2756 d	2669 d	2545 d	2516 d	2532 d	2549 d	2741 d	
	<30 Days	30	35	29	27	51	34	30	35	40	35	41	35	35	13.0%
	>=30 ~ <365 Days	85	89	87	85	67	85	92	92	92	100	93	100	89	32.8%
	>= 1 Year & < 2 Years	19	19	23	23	26	24	24	22	25	27	25	23	23	8.6%
	>= 2 Years & < 5 Years	34	32	31	32	32	33	32	32	29	27	28	29	31	11.4%
	>= 5 Years & < 20 Years	53	53	53	52	52	51	51	50	50	49	48	46	51	18.7%
>= 20 Years	45	45	45	44	42	41	42	41	40	40	41	41	42	15.6%	

* Counts the total number of individuals who are on the hospital roll at end of each month. This number serves as denominator to calculate percentage of each group.

Performance Related Information for Staff & Managers

6. Major Unusual Incidents by Incident Location/Unit

Data Source: UI DB

Updated as of 12/08/14

Category		Dec-13	Jan-14	Feb-14	Mar-14	Apr-14	May-14	Jun-14	Jul-14	Aug-14	Sep-14	Oct-14	Nov-14	Monthly Average	Total (12mths)	Percent
Total Unusual Incidents		179	215	169	192	212	193	174	199	249	190	215	207	200	2394	100%
Incident Location	1A	6	5	6	11	6	14	4	7	15	4	11	12	8	101	4%
	1B	7	13	16	13	7	9	9	21	19	10	18	14	13	156	7%
	1C	13	11	9	11	17	7	11	6	12	18	31	13	13	159	7%
	1D	14	27	17	27	11	27	22	19	29	20	7	18	20	238	10%
	1E	10	26	9	33	22	17	13	12	22	21	25	15	19	225	9%
	1F	34	39	33	24	27	19	15	37	32	28	25	23	28	336	14%
	1G	34	29	14	6	22	27	24	12	28	20	13	7	20	236	10%
	2A	3	1	7	3	5	3	3	6	10	7	4	12	5	64	3%
	2B	4	2	2	3	6	4	0	2	4	8	4	15	5	54	2%
	2C	20	10	12	15	19	19	19	22	20	9	16	10	16	191	8%
	2D	9	14	14	14	34	16	13	20	18	17	18	26	18	213	9%
	TLC	16	28	14	22	21	17	24	14	20	15	26	27	20	244	10%
	Other	9	10	16	10	15	14	17	21	20	13	17	15	15	177	7%
Physical Assault		46	55	41	40	64	55	36	38	51	44	67	42	48	579	100%
Incident Location	1A	2	2	1	1	1	5	0	2	2	1	0	0	1	17	3%
	1B	0	0	4	0	1	3	1	3	0	2	4	2	2	20	3%
	1C	3	3	2	0	5	2	3	1	0	3	8	0	3	30	5%
	1D	3	4	7	13	4	8	8	5	14	11	4	3	7	84	15%
	1E	4	13	0	12	8	7	3	5	2	4	12	4	6	74	13%
	1F	8	7	5	1	7	4	2	5	3	5	8	9	5	64	11%
	1G	16	10	8	3	8	9	4	3	8	9	4	0	7	82	14%
	2A	0	0	0	0	0	0	0	0	0	0	1	1	0	2	0%
	2B	0	0	0	0	0	0	0	2	0	0	0	1	0	3	1%
	2C	3	4	5	2	7	5	7	4	3	2	4	6	4	52	9%
	2D	4	6	4	3	15	8	3	1	11	4	11	8	7	78	13%
	TLC - Intensive	2	4	5	3	5	3	2	2	3	0	7	5	3	41	7%
	TLC - Transitional	0	1	0	1	1	0	0	2	4	3	0	3	1	15	3%
	Other	1	1	0	1	2	1	3	3	1	0	4	0	1	17	3%

Performance Related Information for Staff & Managers

6. Major Unusual Incidents by Incident Location/Unit

Data Source: UI DB

Updated as of 12/08/14

Category		Dec-13	Jan-14	Feb-14	Mar-14	Apr-14	May-14	Jun-14	Jul-14	Aug-14	Sep-14	Oct-14	Nov-14	Monthly Average	Total (12mths)	Percent
Aggressive Behavior		48	67	48	65	62	57	61	71	102	66	67	70	65	784	135%
Incident Location	1A	0	0	2	0	0	0	1	1	5	1	2	1	1	13	2%
	1B	0	0	1	4	0	0	0	3	7	4	5	2	2	26	4%
	1C	3	1	4	3	3	0	1	3	6	7	10	3	4	44	8%
	1D	0	8	3	9	2	10	5	4	12	7	1	7	6	68	12%
	1E	3	12	2	14	9	4	3	2	15	11	9	7	8	91	16%
	1F	11	18	19	15	13	9	10	20	18	10	15	11	14	169	29%
	1G	14	9	4	1	10	11	17	5	14	8	0	2	8	95	16%
	2A	2	0	4	1	3	2	2	4	7	3	1	2	3	31	5%
	2B	0	1	1	0	2	1	0	0	1	4	2	11	2	23	4%
	2C	5	2	4	6	3	8	10	12	6	3	5	2	6	66	11%
	2D	3	4	2	4	9	5	2	8	1	2	5	11	5	56	10%
	TLC - Intensive	5	7	1	6	5	6	7	4	3	3	3	4	5	54	9%
	TLC - Transitional	0	4	0	2	3	0	2	3	4	1	4	5	2	28	5%
	Other	2	1	1	0	0	1	1	2	3	2	5	2	2	20	3%
Psych Emergency		31	52	34	53	34	48	48	45	86	56	67	57	51	611	106%
Incident Location	1A	0	0	1	0	0	0	1	1	1	0	1	0	0	5	1%
	1B	0	0	3	3	0	0	0	2	3	1	7	2	2	21	4%
	1C	1	0	1	1	0	0	2	1	3	2	11	0	2	22	4%
	1D	0	8	3	7	2	10	6	3	18	9	3	9	7	78	13%
	1E	2	15	1	23	8	5	3	1	16	16	14	10	10	114	20%
	1F	10	17	16	10	5	7	4	19	13	10	15	16	12	142	25%
	1G	16	10	5	3	9	16	17	5	16	12	3	0	9	112	19%
	2A	0	0	0	0	2	0	0	0	0	0	0	0	0	2	0%
	2B	0	0	0	0	0	0	0	0	1	0	0	5	1	6	1%
	2C	0	0	1	4	4	4	10	7	7	0	4	0	3	41	7%
	2D	2	1	2	1	3	2	0	3	5	3	5	11	3	38	7%
	TLC - Intensive	0	1	1	1	0	4	4	2	2	0	2	2	2	19	3%
	TLC - Transitional	0	0	0	0	1	0	0	0	1	2	0	2	1	6	1%
	Other	0	0	0	0	0	0	0	1	1	0	1	2	0	5	1%

Performance Related Information for Staff & Managers

6. Major Unusual Incidents by Incident Location/Unit

Data Source: UI DB

Updated as of 12/08/14

Category		Dec-13	Jan-14	Feb-14	Mar-14	Apr-14	May-14	Jun-14	Jul-14	Aug-14	Sep-14	Oct-14	Nov-14	Monthly Average	Total (12mths)	Percent
Fall		16	18	25	26	24	22	20	25	24	25	28	32	24	285	100%
Incident Location	1A	3	2	3	5	1	3	0	1	4	2	4	9	3	37	13%
	1B	2	1	3	2	2	1	1	4	6	4	4	5	3	35	12%
	1C	1	4	2	2	2	4	2	0	1	0	5	2	2	25	9%
	1D	1	1	2	4	1	5	0	5	2	3	2	2	2	28	10%
	1E	1	3	1	1	2	0	2	0	1	1	2	2	1	16	6%
	1F	1	3	1	1	1	0	1	3	1	2	1	2	1	17	6%
	1G	2	0	1	1	1	2	0	2	2	1	2	1	1	15	5%
	2A	0	0	1	0	0	0	0	0	0	1	0	0	0	2	1%
	2B	3	0	1	2	4	0	0	0	1	2	1	1	1	15	5%
	2C	0	0	1	4	1	2	1	3	1	0	0	0	1	13	5%
	2D	0	1	2	2	7	1	4	4	1	5	2	1	3	30	11%
	TLC - Intensive	2	0	0	0	1	0	1	0	0	1	1	2	1	8	3%
	TLC - Transitional	0	0	1	0	1	1	2	1	2	1	1	3	1	13	5%
	Other	0	3	6	2	0	3	6	2	2	2	3	2	3	31	11%
Physical Injury		37	47	30	34	43	34	24	26	40	37	36	39	36	427	100%
Incident Location	1A	1	0	1	4	3	3	2	2	2	1	0	1	2	20	5%
	1B	0	1	2	2	1	3	1	4	2	1	2	3	2	22	5%
	1C	3	3	2	1	0	2	2	0	2	1	5	0	2	21	5%
	1D	4	11	6	5	1	6	2	3	6	8	3	3	5	58	14%
	1E	2	7	1	8	6	3	3	5	4	2	7	4	4	52	12%
	1F	10	10	5	1	3	1	1	1	4	12	5	8	5	61	14%
	1G	11	3	5	2	5	9	2	2	6	0	3	1	4	49	11%
	2A	0	0	0	0	0	0	0	0	0	1	0	2	0	3	1%
	2B	1	0	1	2	1	1	0	1	0	1	0	0	1	8	2%
	2C	1	4	1	5	7	2	2	3	4	2	2	2	3	35	8%
	2D	3	3	3	2	8	1	1	2	1	4	2	7	3	37	9%
	TLC - Intensive	1	2	1	2	2	1	2	1	2	0	4	3	2	21	5%
	TLC - Transitional	0	0	0	0	0	0	2	0	2	2	0	3	1	9	2%
	Other	0	3	2	0	6	2	4	2	5	2	3	2	3	31	7%

* Not every incident is a major incident. This counts only those incidents that were classified to be major based on the policy.