

**Government of the District of Columbia
Department of Behavioral Health (DBH)**

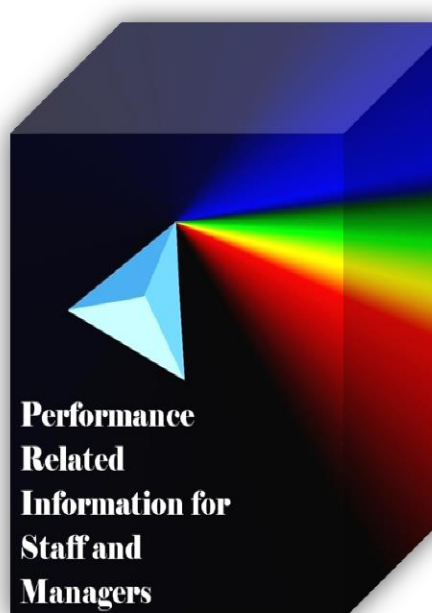


Performance Related Information for Staff and Managers

PRISM

SEPTEMBER 2014

Table of Contents



1.	Admissions to SEH	1
2.	Discharges from SEH.....	1
3.	Average Daily Census	2
4.	Transfers	2
5.	30-Day Readmission Rate	2
6.	Unusual Incidents.....	3
7.	Patient-Involved Unusual Incidents.....	3
8.	Admissions vs. Patient UI Rate	4
9.	Unusual Incidents by Severity	4
10.	Selected Types of Incidents	4
11.	Physical Assaults by Severity	5
12.	Patient Injuries	5
13.	Staff Injuries.....	5
14.	Percent of Patients Restrained or Secluded.....	6
15.	Restraint Hours Rate & Seclusion Hours Rate	6
16.	Elopements	6
17.	Reported Medication Variance Events	7
18.	Reported Adverse Drug Reactions.....	7
19.	Percent of Missing Documentation on Med-Administration.....	8
20.	Medication Refusal Rate*.....	8
21.	Number of STAT Events and Individuals Involved	8
22.	Demographics and Length of Stay	9

<input type="checkbox"/>	<i>Appendix 1) Table – Census, Admissions & Discharges</i>
<input type="checkbox"/>	<i>Appendix 2) Table – Key Performance Indicators</i>
<input type="checkbox"/>	<i>Appendix 3) Table – Unusual Incident & Medication</i>
<input type="checkbox"/>	<i>Appendix 4) Table – Restraint & Seclusion</i>
<input type="checkbox"/>	<i>Appendix 5) Table – Demographic Information of Individuals in Care</i>
<input type="checkbox"/>	<i>Appendix 6) Table – Unusual Incidents by Unit</i>

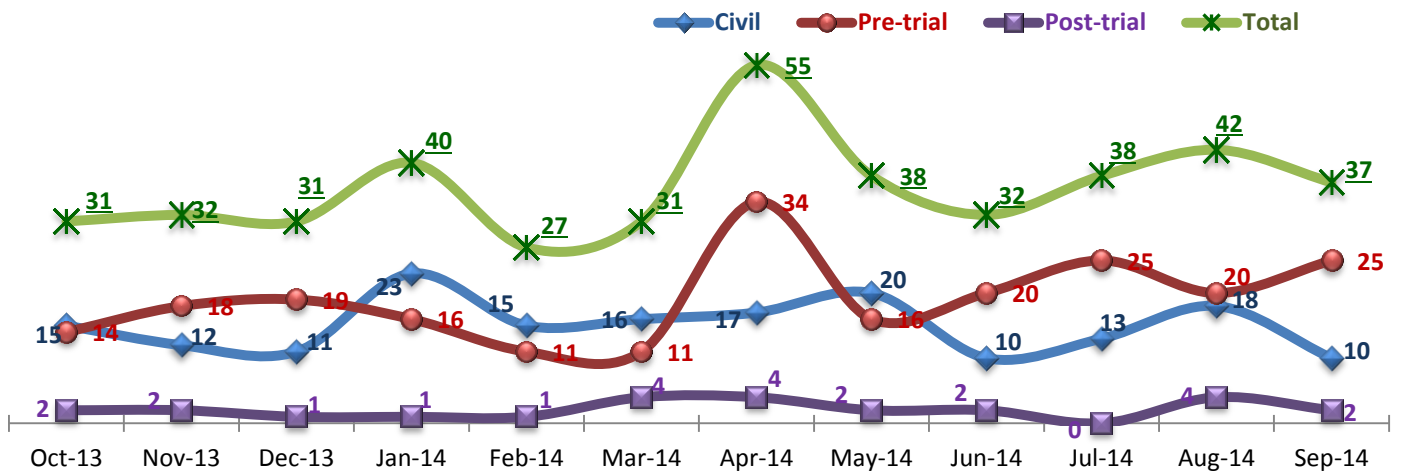
10/17/2014

Office of Statistics and Reporting (OSR)

Key Trends: Admission, Discharge, Transfer, Census, and Readmissions (1~6)

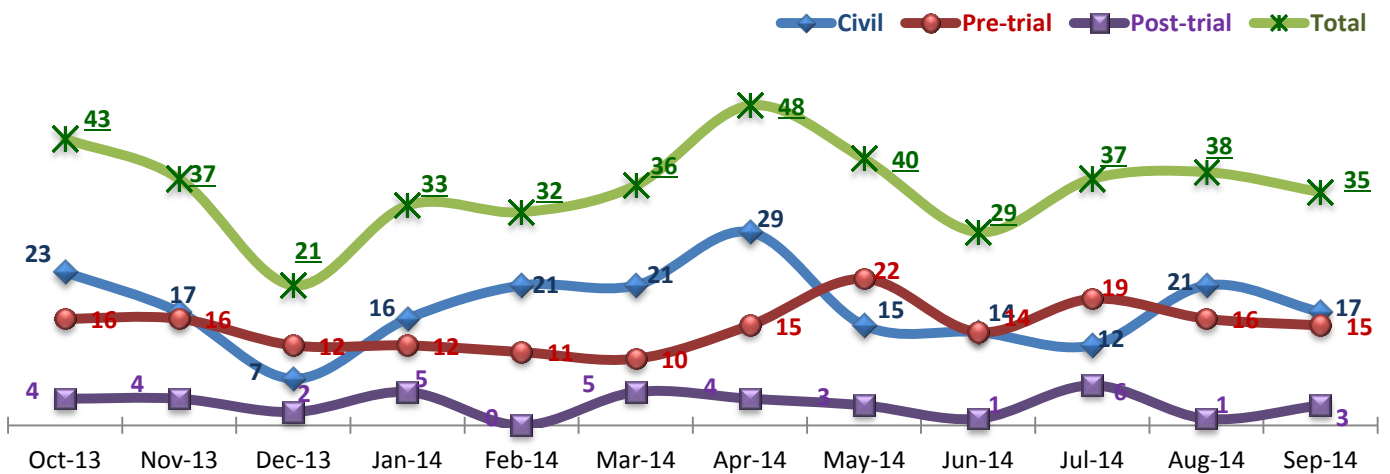
- In the month of September 2014, the number of admissions (37) decreased by five (5) from August (42), but it is still above the monthly average of FY14 (36). A high volume of admissions for the last 3 months of FY14 continued to increase the daily census: the average daily census (ADC) in September (283) is not only a significant increase from August (271) but also the highest level since November 2011, when we were serving a total of 286 individuals in care per day.
- The number of total admissions (434) in FY14 is higher than that of FY13 (423) and the number of total discharges (429) in FY14 is exactly the same as that of FY13. As FY14 had more admissions than discharges, the ADC as of September 2014 (283) is up by 17 compared with the ADC from September last year (266).
- The number of inter-unit transfers in September (22) is far above the monthly average in FY14 (11). This is due in part to the large number of admissions over the past few months, which significantly increased the occupancy rate among admission units, triggering inevitable inter-unit transfers.
- There were two individuals who returned within 30-days from August civil discharges. The 30-day readmission rate year-to-date in FY14 is 2.0%, which is far below the NPR (6.9%)¹.

1. Admissions to SEH



* Number of admissions to SEH inpatient program, including transfers from outpatient to inpatient program.

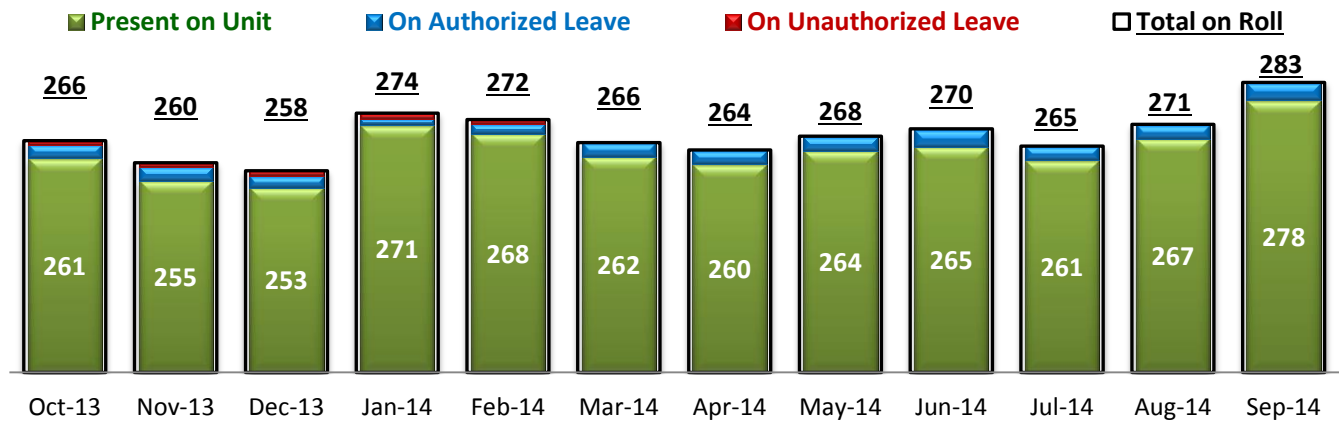
2. Discharges from SEH



¹ NPR: National Public Rate as of June 2013 was published in November 2013 by National Association of State Mental Health Program Directors Research Institute (NRI), based on data collected from a number of state psychiatric hospitals nationwide.

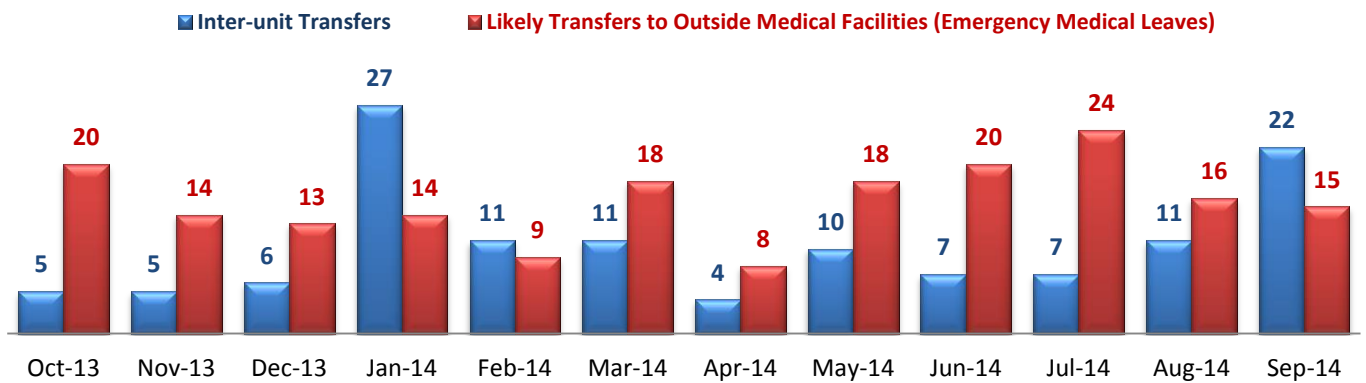
* Number of discharges from SEH inpatient program, including transfers from inpatient to outpatient program.

3. Average Daily Census



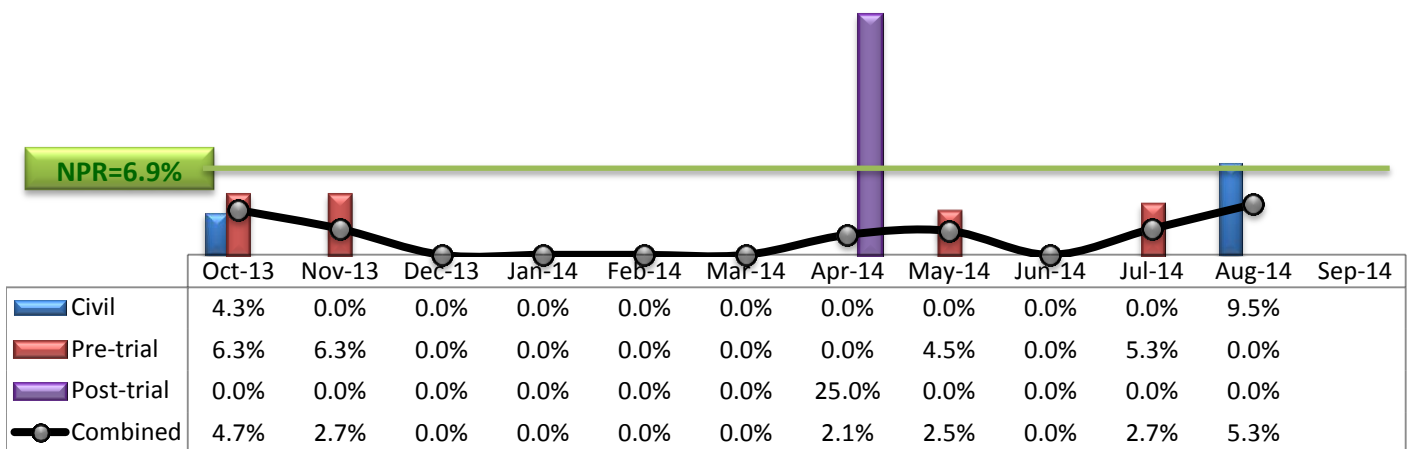
* Data above is the daily average number of individuals counted at 11:59 PM every day during each month.

4. Transfers



* Number of inter-unit transfers that occurred during month and number of emergency medical leaves that were initiated during month.

5. 30-Day Readmission Rate



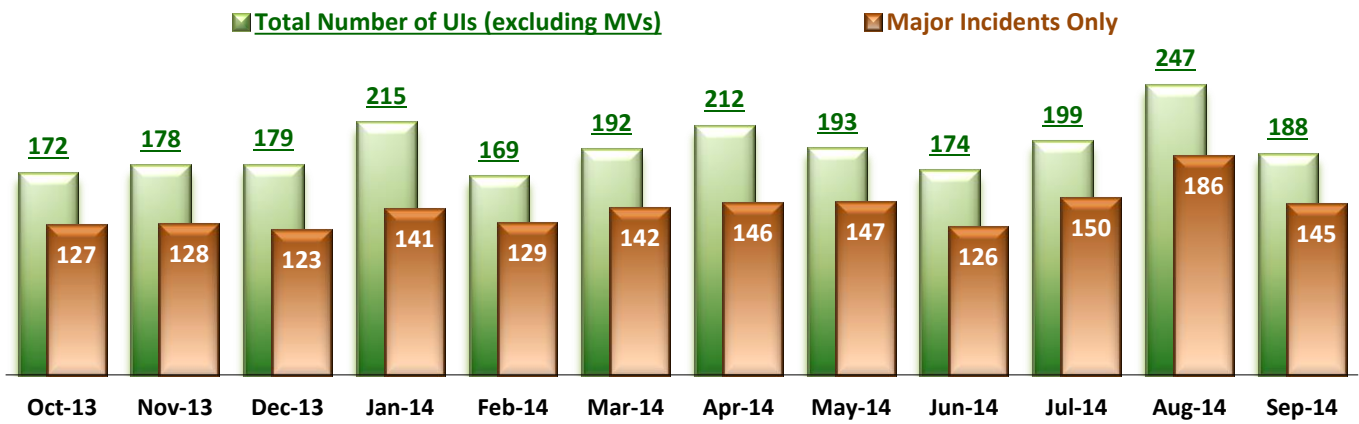
* Percent of discharges that returned to SEH within 30 days of discharges. It does not include those who may have been re-hospitalized at another psychiatric facility. This measure requires 30-day observation following discharge.

** The post-trial denominators (discharges) per month range only between one and six, making the monthly re-admission rate high when there is any. For example, in August 2013, there were two post trial discharges, of which one (50%) was readmitted within 30 days.

Key Trends: Unusual Incidents (6~16)

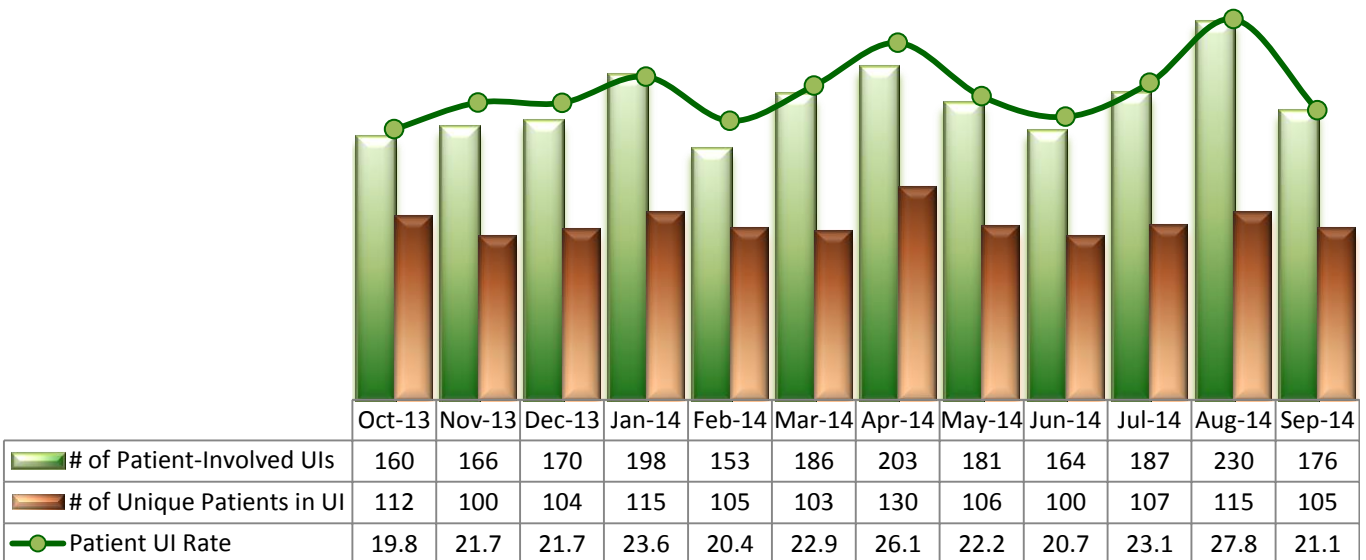
- The total number of unusual incidents (UIs) and the patient UI rate decreased significantly in September 2014: from a total of 247 UIs and 28 patient UI rate (29 incidents per 1000 patient days) in August to a total of 188 UIs and 21 patient UI rate in September. These are below the FY14 average figures, which are a total of 193 UIs per month and 23 patient UI rate.
- The decrease of UIs in September appears at all severity levels, but particularly in the number of high severity UIs. The number of incidents involving aggressive behaviors and psychiatric emergencies, which are often more prevalent among recent admissions, decreased by 35% since the number of admissions declined in September but the number of physical assaults decreased by only 14%.
- Patient injuries, including major injuries, increased whereas staff injuries considerably declined in September.
- The percentage of unique individuals secluded or restrained at least once during the month of September recorded the highest in FY14 although the seclusion and restraint hours remained low. The percentage of unique individuals secluded (3.8%) exceeded NPR (2.4%) during both August and September 2014.
- There was no elopement since July 2014 and the elopement rate in FY14 recorded 0.09 per 1000 patient days, which is lower than the national average (NPR 0.13).

6. Unusual Incidents



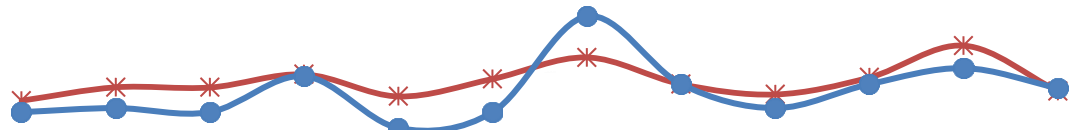
* As of May 2014, a medication or vital sign refusal incident is no longer considered to be an UI. In the above and below charts in this report, any medication or vital sign refusal incidents have been removed for a consistent assessment of the UI trend.

7. Patient-Involved Unusual Incidents



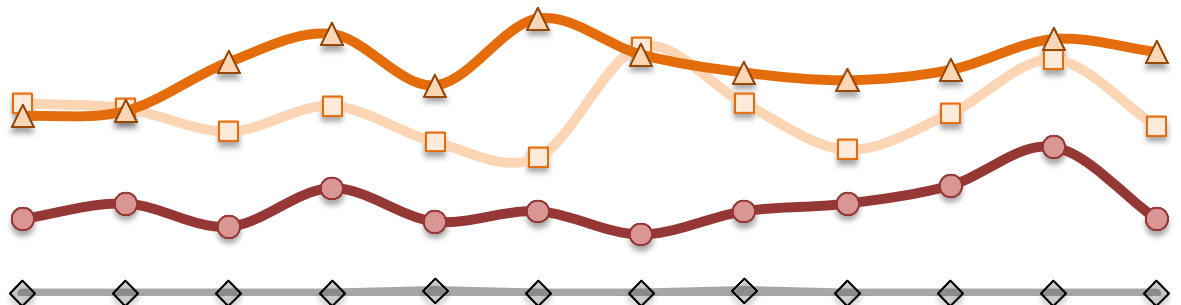
* The patient UI rate is the number of patient-involved unusual incidents reported for every 1000 inpatient days.

8. Admissions vs. Patient UI Rate



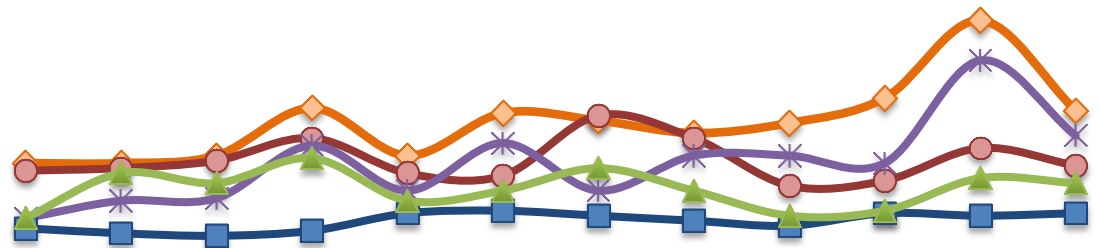
	Oct-13	Nov-13	Dec-13	Jan-14	Feb-14	Mar-14	Apr-14	May-14	Jun-14	Jul-14	Aug-14	Sep-14
—*— Patient UI Rate	19.8	21.7	21.7	23.6	20.4	22.9	26.1	22.2	20.7	23.1	27.8	21.1
—●— Admission	31	32	31	40	27	31	55	38	32	38	42	37

9. Unusual Incidents by Severity



	Oct-13	Nov-13	Dec-13	Jan-14	Feb-14	Mar-14	Apr-14	May-14	Jun-14	Jul-14	Aug-14	Sep-14
□ 1) Low	74	72	63	73	59	53	96	74	56	70	91	65
△ 2) Medium	69	71	90	101	81	107	93	86	83	87	99	94
● 3) High	29	35	26	41	28	32	23	32	35	42	57	29
◇ 4) Catstrp	0	0	0	0	1	0	0	1	0	0	0	0
Total UI	172	178	179	215	169	192	212	193	174	199	247	188

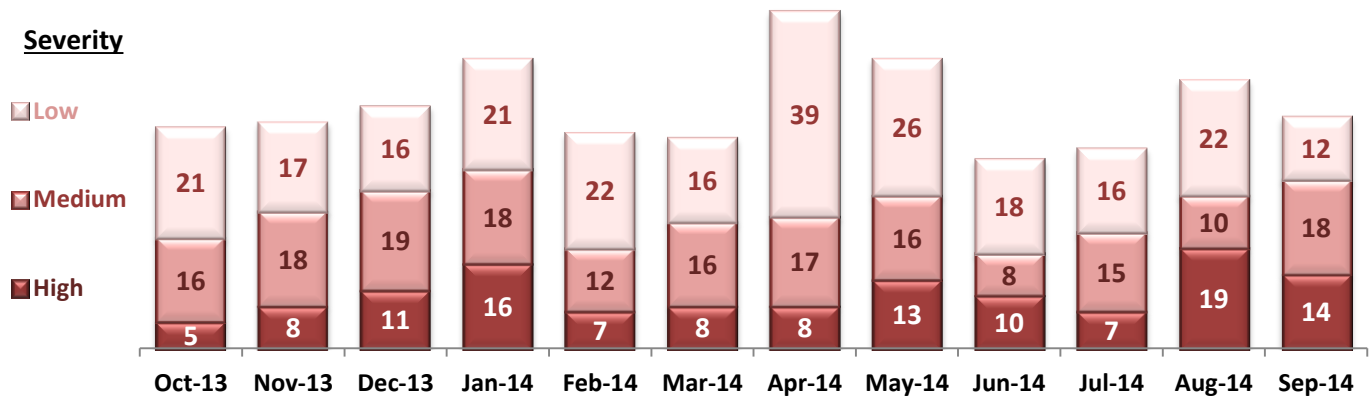
10. Selected Types of Incidents



	Oct-13	Nov-13	Dec-13	Jan-14	Feb-14	Mar-14	Apr-14	May-14	Jun-14	Jul-14	Aug-14	Sep-14
◇ Aggressive Behavior	45	45	48	67	48	65	62	57	61	71	102	66
● Physical Assault	42	43	46	55	41	40	64	55	36	38	51	44
* Pysch Emerg.	23	30	31	52	34	53	34	48	48	45	86	56
■ Fall	19	17	16	18	25	26	24	22	20	25	24	25
▲ Injury	23	41	37	47	30	34	43	34	24	26	39	37

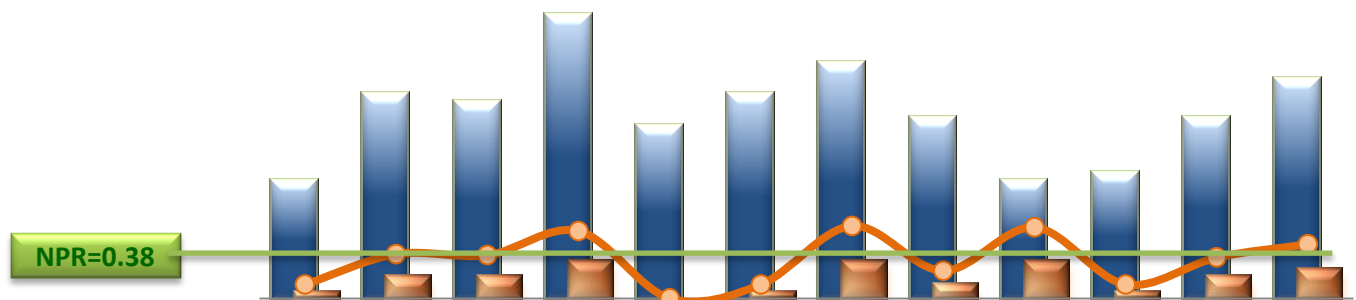
* These are incident types that are frequently reported. Some incidents may be counted in multiple categories. For example, a physical assault incident that accompanied psychiatric emergency and injury is counted under psychiatric emergency and injury as well as under physical assault. Injury is broadly defined to include any type of injuries regardless of the cause or severity level.

11. Physical Assaults by Severity



* Any physical assault that accompanies a code 13 or results in extensive injury needing off-unit treatment or transfer to ER is considered to be high severity, any physical assault that causes a minor injury that can be treated on unit is considered to be medium severity, and physical assault events that result in no injury are considered to be low severity.

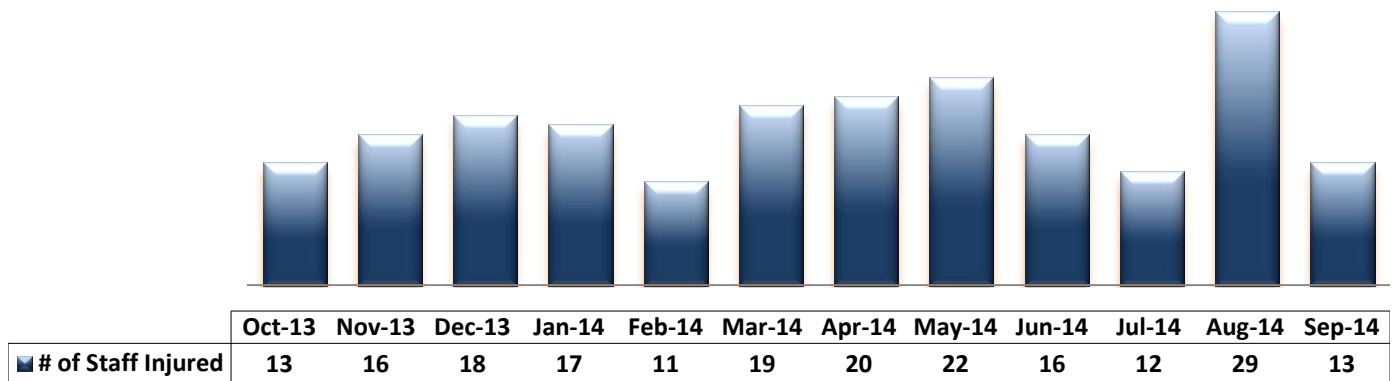
12. Patient Injuries



	Oct-13	Nov-13	Dec-13	Jan-14	Feb-14	Mar-14	Apr-14	May-14	Jun-14	Jul-14	Aug-14	Sep-14
Total Pts Injured	15	26	25	36	22	26	30	23	15	16	23	28
Major Pt Injuries*	1	3	3	5	0	1	5	2	5	1	3	4
Patient Injury Rate	0.12	0.39	0.38	0.60	0.00	0.12	0.64	0.24	0.63	0.12	0.36	0.48

* Injury is broadly defined to include any type of injuries regardless of the cause or severity level. The total number of patients injured represents all of the reported injuries including minor injuries treated with first aid alone. However, the patient injury rate considers only the number of patient injuries that required beyond first-aid level treatment based on the NRI definition and the patient injury rate is the number of 'major' patient injuries per every 1000 inpatient days

13. Staff Injuries

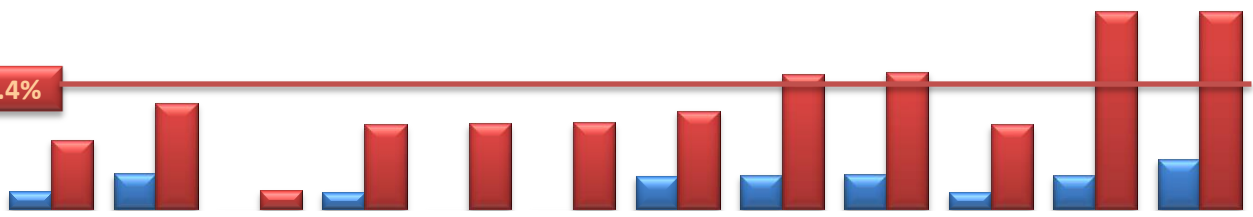


* Injury is broadly defined to include any type of injuries regardless of the cause or severity level. The total number of staff injured represents all of the reported staff injuries including minor injuries treated with first aid alone.

14. Percent of Patients Restrained or Secluded

NPR(R)=5.8%

NPR(S)=2.4%



	Oct-13	Nov-13	Dec-13	Jan-14	Feb-14	Mar-14	Apr-14	May-14	Jun-14	Jul-14	Aug-14	Sep-14
■ Restraint	0.3%	0.7%	0.0%	0.3%	0.0%	0.0%	0.6%	0.7%	0.7%	0.3%	0.6%	1.0%
■ Seclusion	1.3%	2.1%	0.3%	1.6%	1.7%	1.7%	1.9%	2.6%	2.7%	1.6%	3.8%	3.8%

* Percent of unique patients who were restrained at least once and percent of unique patients who were secluded at least once. The denominator includes all individuals who were served in care >=1 day during month.

15. Restraint Hours Rate & Seclusion Hours Rate

NPR(R)=0.71

NPR(S)=0.44

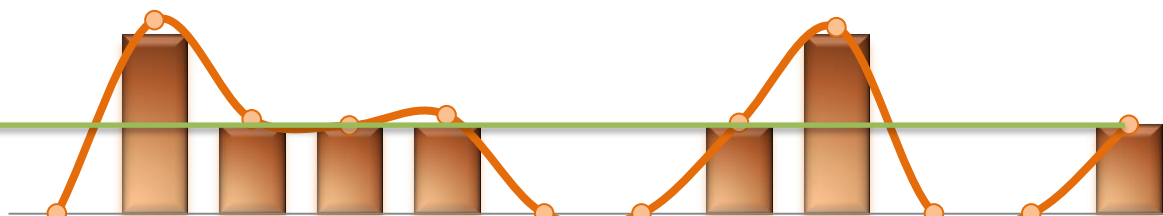


	Oct-13	Nov-13	Dec-13	Jan-14	Feb-14	Mar-14	Apr-14	May-14	Jun-14	Jul-14	Aug-14	Sep-14
■ Restraint	0.011	0.034	0.000	0.003	0.000	0.000	0.021	0.048	0.022	0.077	0.108	0.030
■ Seclusion	0.017	0.094	0.034	0.052	0.068	0.095	0.063	0.127	0.118	0.073	0.085	0.049

* Restraint/Seclusion Hours Rate: Number of hours spent in restraint/seclusion for every 1000 inpatient hours.

16. Elopements

NPR=0.13



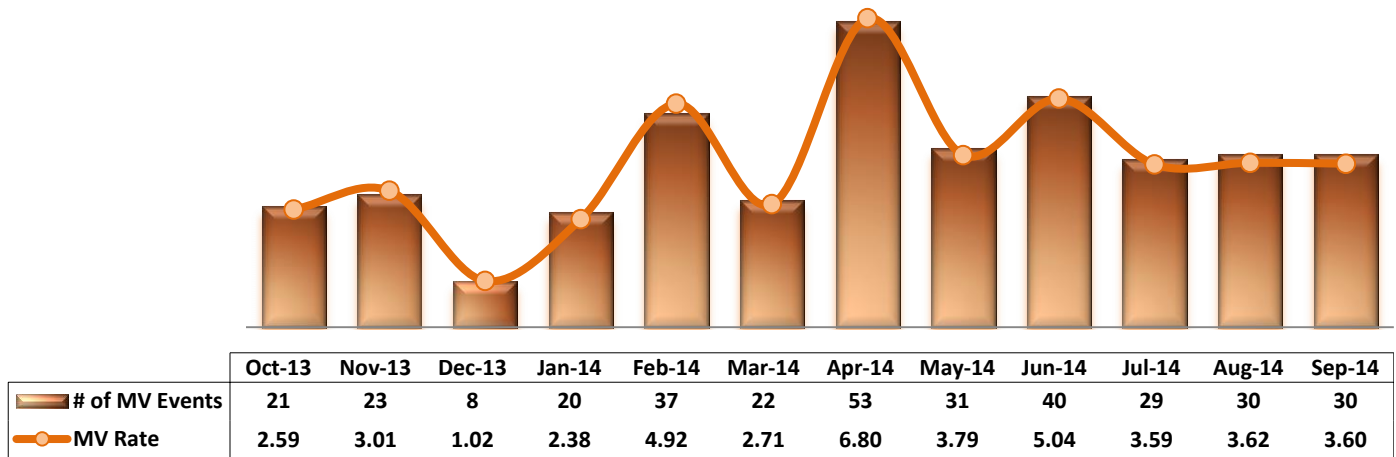
	Oct-13	Nov-13	Dec-13	Jan-14	Feb-14	Mar-14	Apr-14	May-14	Jun-14	Jul-14	Aug-14	Sep-14
■ # of Elopements	0	2	1	1	1	0	0	1	2	0	0	1
○ Elopement Rate	0.00	0.26	0.13	0.12	0.13	0.00	0.00	0.12	0.25	0.00	0.00	0.12

* It counts the total number of unauthorized leaves for any duration that were initiated during month and were recorded in Avatar. The elopement rate is the number of those unauthorized leaves that occurred for every 1000 inpatient days.

Key Trends: Medication Documentation, Medication Variance, ADR, and STAT (17~21)

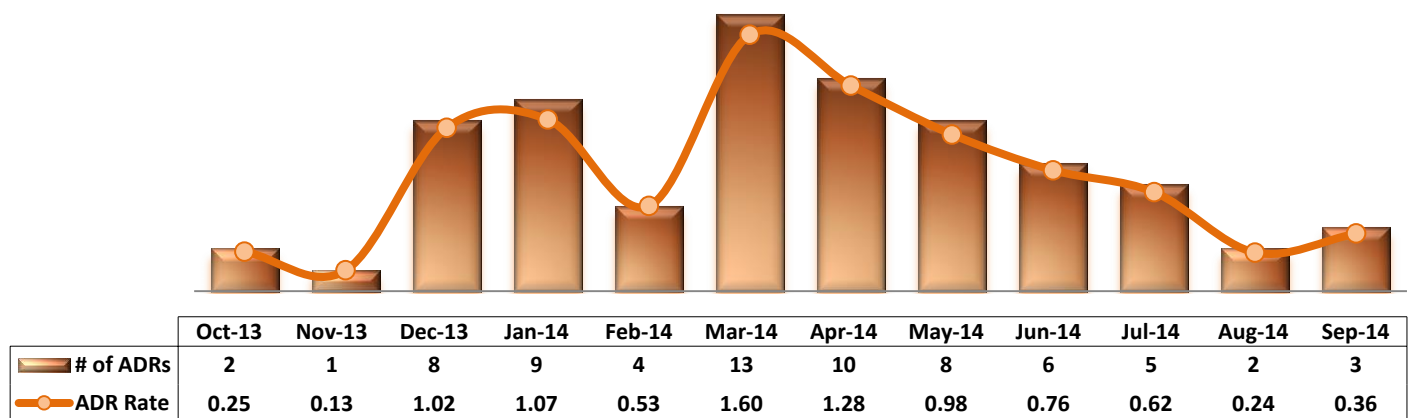
- The number of reported ADRs was in decline since March through August 2014 and that in September also remained low at three (3).
- The rate of missing documentation on medication administration slightly decreased to 0.60% in September from 0.64% in August 2014.
- The medication refusal rate decreased to 6.5% in September from 7.1% in August but is still higher than the average refusal rate for the past 12 months (5.6%).
- The number of STAT events and orders in September 2014 declined. However, the number of unique individuals involved in one or more STAT events increased to the highest level (43) in September.

17. Reported Medication Variance Events



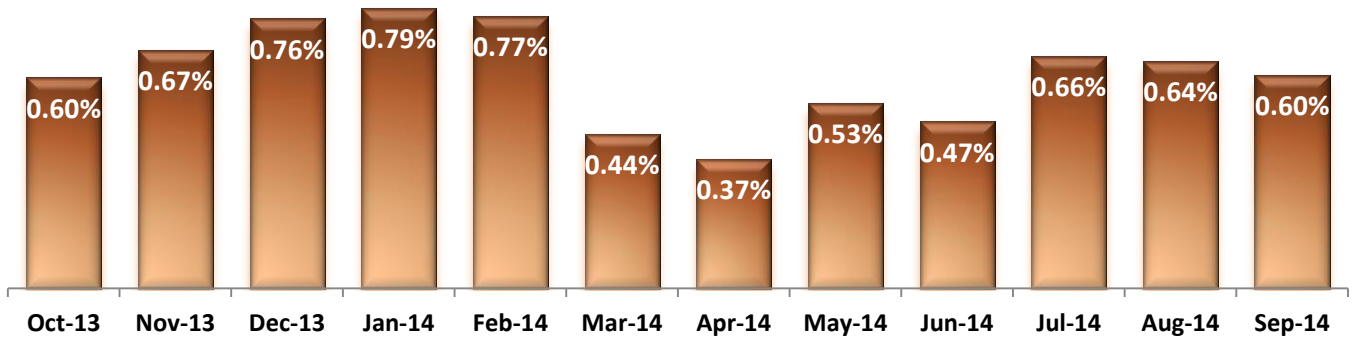
* MV Rate: Number of reported medication variance events that occurred for every 1000 inpatient days.

18. Reported Adverse Drug Reactions

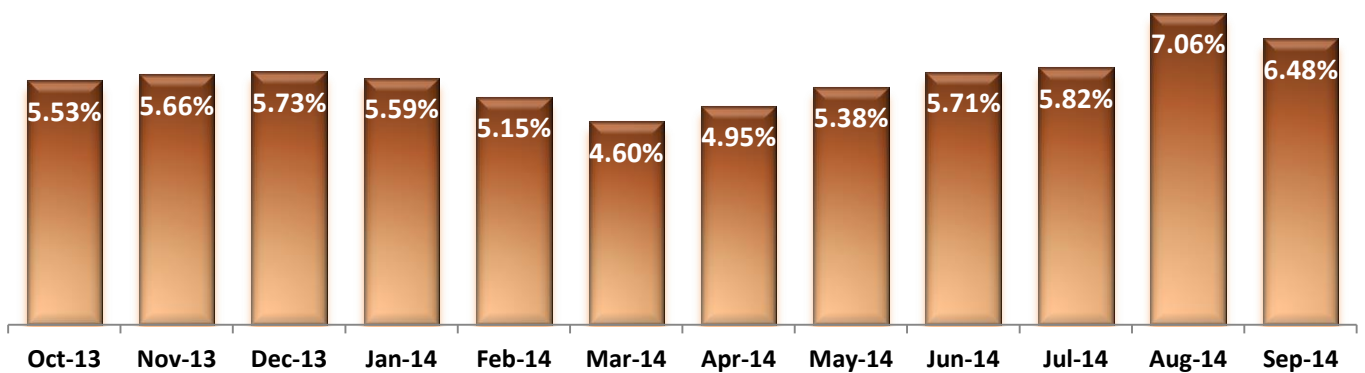


* ADR Rate: Number of reported adverse drug reaction events that occurred for every 1000 inpatient days.

19. Percent of Missing Documentation on Med-Administration

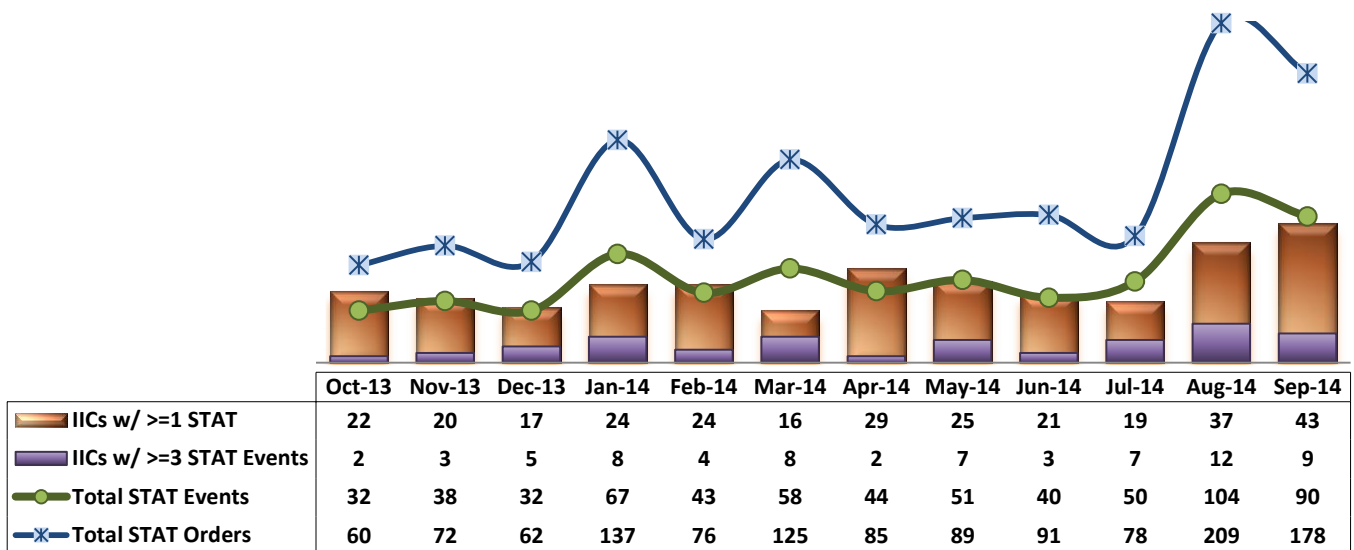


20. Medication Refusal Rate*



* Medication Refusal Rate: the number of refused medication doses divided by the total number of doses scheduled for administration.

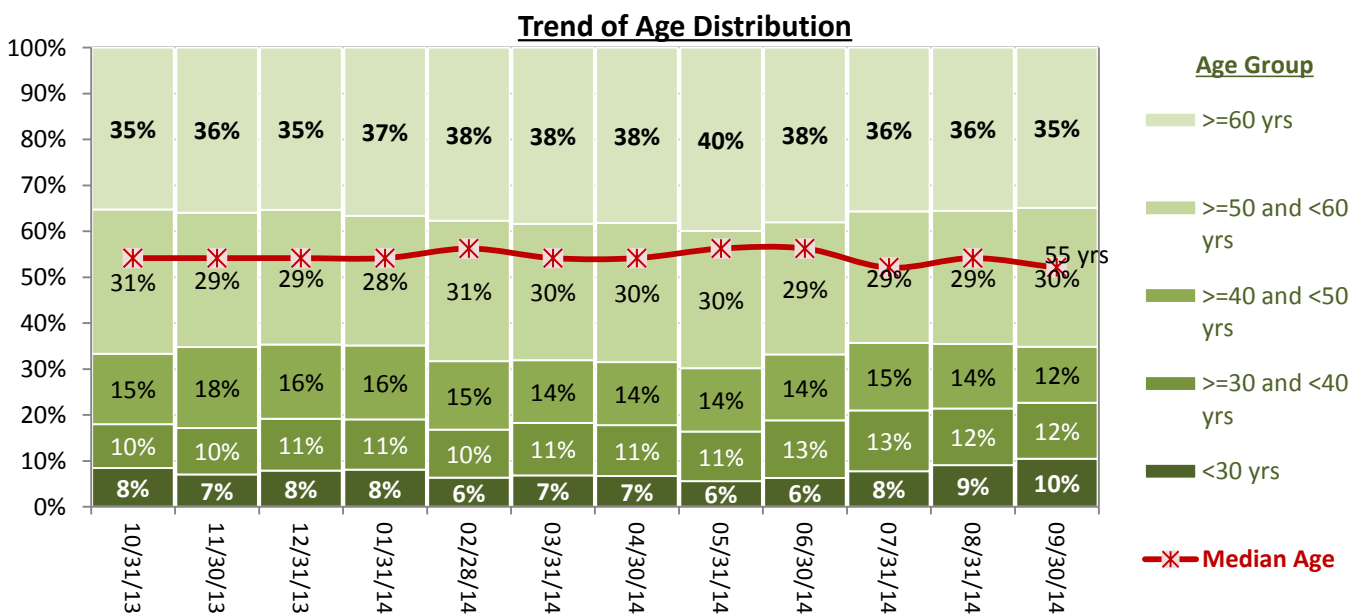
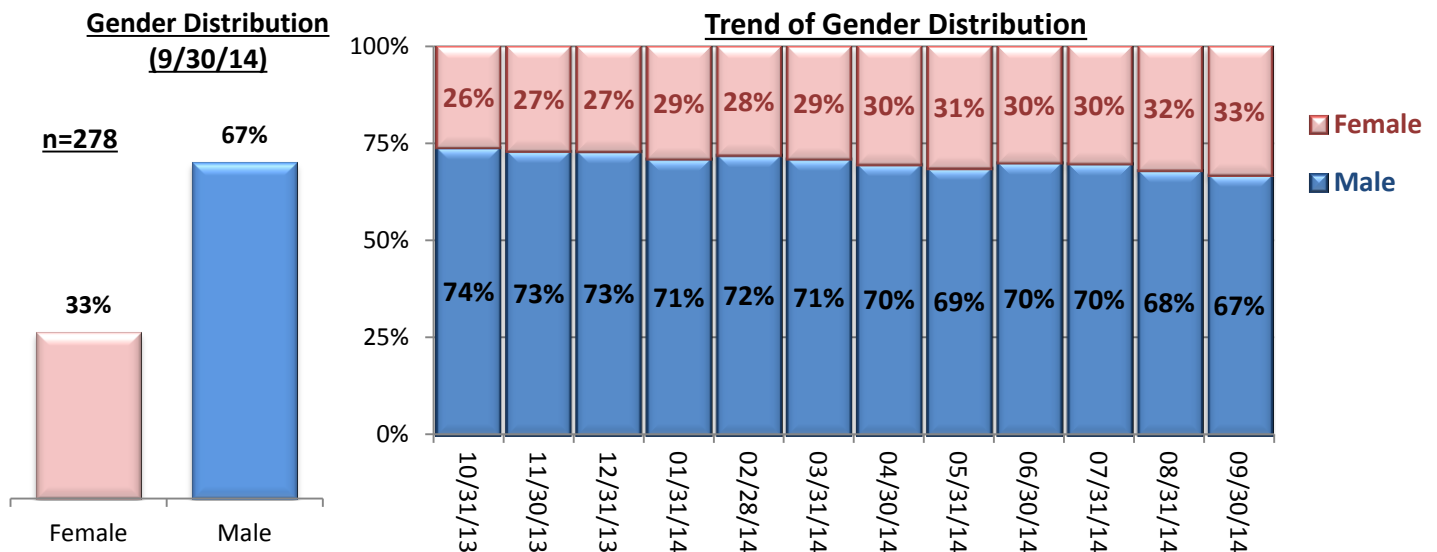
21. Number of STAT Events and Individuals Involved



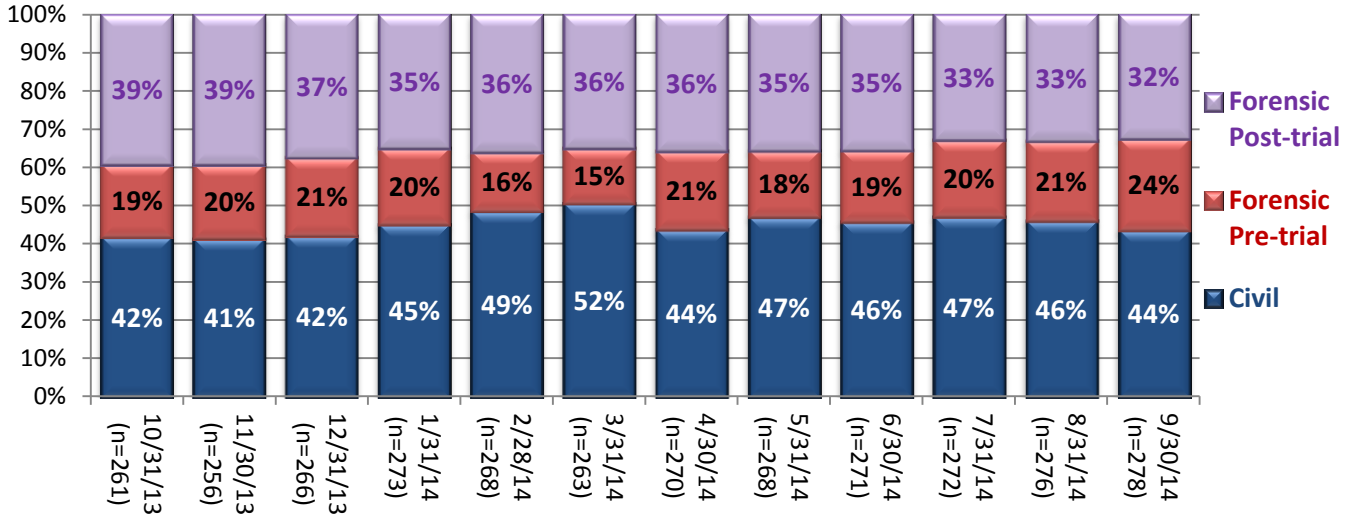
Key Trends: Demographics, Legal Status, and Length of Stay (22)

- The proportion of females gradually increased throughout the year. As of October 2013, 26% of individuals in our care were female and that percentage increased to 33% by September 2014.
- About two out of three individuals in care are 50 years or older and the median age is 55 years old as of September 30, 2014.
- As the number of pre-trial admissions significantly increased during the last quarter of FY14, the proportion of forensic pre-trial population also increased accordingly: from 15% as of May 31, 2014 to 24% as of September 30, 2014.
- The median length of stay (LOS) of individuals remaining in care decreased gradually since February 2014, falling to the lowest level at about 13 months as of September 30, 2014. A large number of admissions over the past 6 months triggered an increase in the proportion of recent admissions among the total population in care. Consequently, more and more of individuals in care had shorter LOS, constantly lowering the median LOS of all individuals in care.

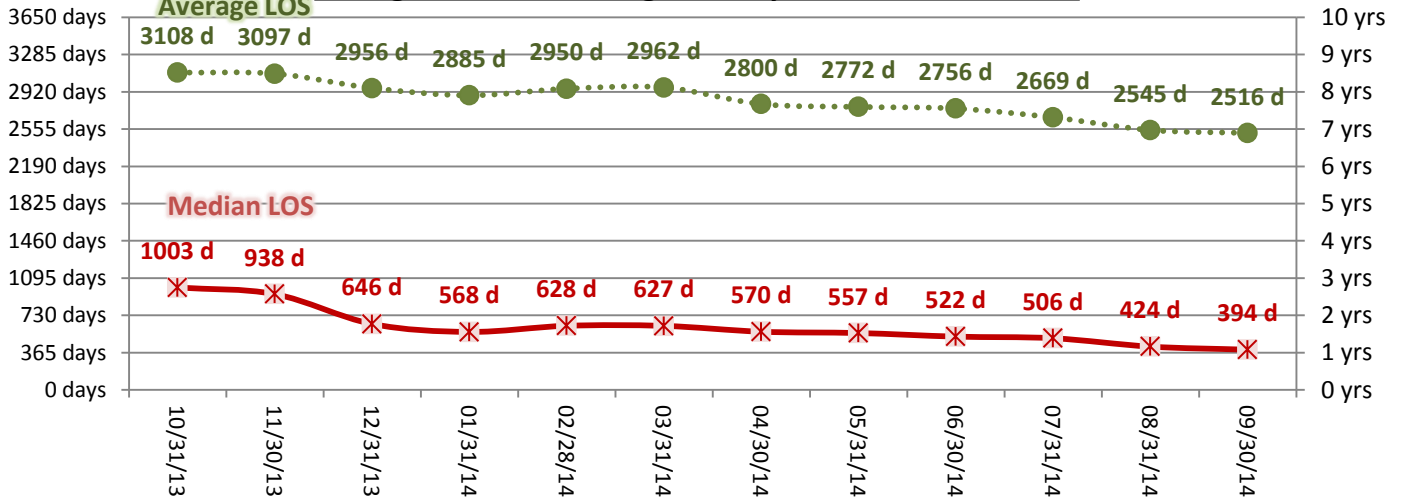
22. Demographics and Length of Stay



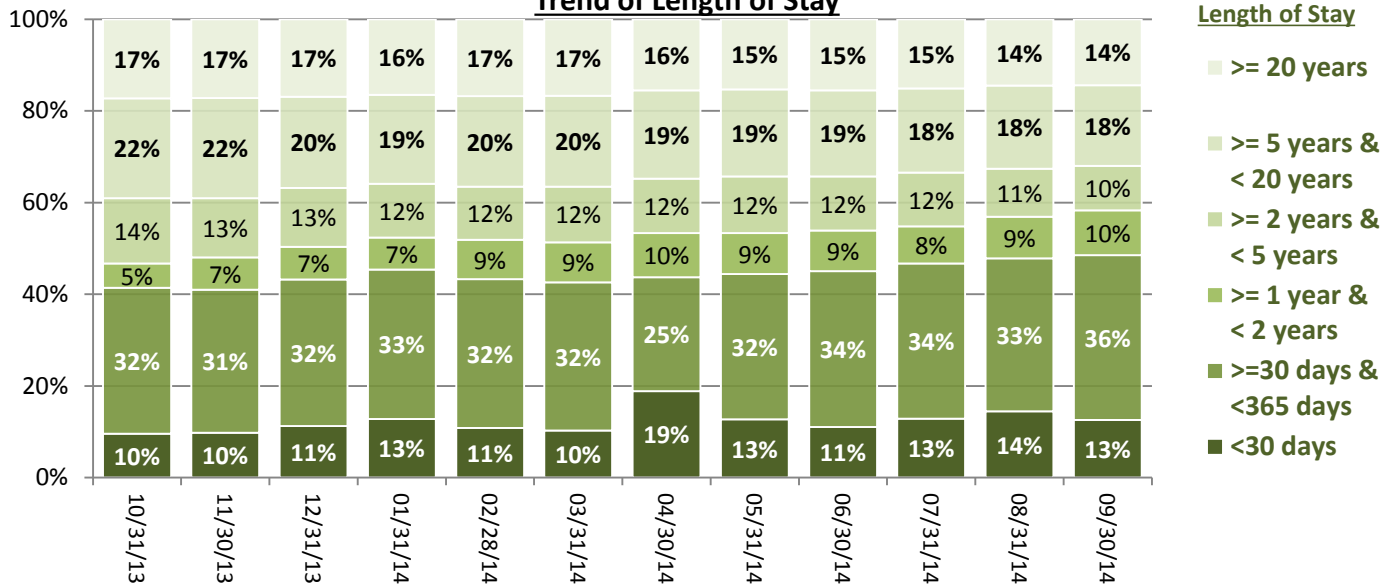
Trend of Legal Status Distribution



Average and Median Length of Stay for Individuals in Care



Trend of Length of Stay



Performance Related Information for Staff & Managers

1. Census, Admissions, Discharges & Transfers

Data Source: Avatar

Updated as of 10/17/14

Category	Oct-13	Nov-13	Dec-13	Jan-14	Feb-14	Mar-14	Apr-14	May-14	Jun-14	Jul-14	Aug-14	Sep-14	Monthly Average	Total (12mths)	Figure	
Admissions	Civil	15	12	11	23	15	16	17	20	10	13	18	10	15	180	Figure 1
	Pre-trial	14	18	19	16	11	11	34	16	20	25	20	25	19	229	
	Post-trial	2	2	1	1	1	4	4	2	2	0	4	2	2	25	
	Total	31	32	31	40	27	31	55	38	32	38	42	37	36	434	
Discharges	Civil	23	17	7	16	21	21	29	15	14	12	21	17	18	213	Figure 2
	Pre-trial	16	16	12	12	11	10	15	22	14	19	16	15	15	178	
	Post-trial	4	4	2	5	0	5	4	3	1	6	1	3	3	38	
	Total	43	37	21	33	32	36	48	40	29	37	38	35	36	429	
Net Increase During Month	Civil	-8	-5	4	7	-6	-5	-12	5	-4	1	-3	-7		-33	
	Pre-trial	-2	2	7	4	0	1	19	-6	6	6	4	10		51	
	Post-trial	-2	-2	-1	-4	1	-1	0	-1	1	-6	3	-1		-13	
	Total	-12	-5	10	7	-5	-5	7	-2	3	1	4	2		5	
All Individuals on Roll at End of Month	261	256	266	273	268	263	270	268	271	272	276	278	269			
a. Present on Unit	256	250	262	269	263	256	268	260	267	271	270	275	264			
b. On AL	4	5	2	3	5	7	2	8	4	1	6	3	4			
c. On UL	1	1	2	1	0	0	0	0	0	0	0	0	0			
All Individuals on Roll: Daily Average during Month*	266	260	258	274	272	266	264	268	270	265	271	283	268		Figure 3	
a. Present on Unit	261	255	253	271	268	262	260	264	265	261	267	278	264			
b. On AL	4	4	3	2	3	4	4	4	5	4	4	5	4			
c. On UL	1	1	1	2	1	0	0	0	0	0	0	0	0			
Patient Days**	8101	7649	7844	8394	7514	8115	7789	8171	7941	8084	8277	8326	8017	96205		
Inter-Unit Transfers during Month	5	5	6	27	11	11	4	10	7	7	11	22	11	126	Figure 4	
Medical Leaves Initiated during Month	Emergency	20	14	13	14	9	18	8	18	20	24	16	15	16		189
Non-Emer	39	27	34	25	32	25	30	34	81	88	67	68	46	550		
Total	59	41	47	39	41	43	38	52	101	112	83	83	62	739		
Non-Medical Leaves Initiated during Month	146	121	138	142	141	175	147	230	439	430	386	397	241	2892		
UL Initiated during Month	0	2	1	1	1	0	0	1	2	0	0	1	1	9		
Total Unique Patients Served during Month	299	291	287	306	300	299	315	306	300	305	312	312	303			
30 Day Readmission ***	Civil	1	0	0	0	0	0	0	0	0	2		0	3		
	Pre-trial	1	1	0	0	0	0	1	0	1	0		0	4		
	Post-trial	0	0	0	0	0	0	1	0	0	0		0	1		
	Total	2	1	0	0	0	0	1	1	0	1	2		8		

* This is the average number of individuals served on a given day for the respective month. Due to rounding from average calculation, numbers from its subcategories a, b, & c may not add up to the total number on this row.

** It counts the number of patients who are present on the unit and excludes those on authorized or unauthorized leave at 11:59pm on a given day.

*** Number of patients returning within 30 days of discharges that occurred during month.

Performance Related Information for Staff & Managers

2. Key Performance Indicators

Data Source: UI DB, MV DB, ADR DB, Restraint/Seclusion Log, and Avatar

Updated as of 10/17/14

Category	Oct-13	Nov-13	Dec-13	Jan-14	Feb-14	Mar-14	Apr-14	May-14	Jun-14	Jul-14	Aug-14	Sep-14	Monthly Average	NPR* (Jun-13)	Figure
30 Day Readmit (Discharge Cohort)**	Civil	4.3%	0.0%	0.0%	0.0%	0.0%	0.0%	0.0%	0.0%	0.0%	0.0%	9.5%	1.5%		Figure 5
	Pre-trial	6.3%	6.3%	0.0%	0.0%	0.0%	0.0%	0.0%	4.5%	0.0%	5.3%	0.0%	2.5%		
	Post-trial	0.0%	0.0%	0.0%	0.0%	N/A	0.0%	25.0%	0.0%	0.0%	0.0%	0.0%	2.9%		
	Combined	4.7%	2.7%	0.0%	0.0%	0.0%	0.0%	2.1%	2.5%	0.0%	2.7%	5.3%	2.0%	6.9%	
Number of Unusual Incidents*	172	178	179	215	169	192	212	193	174	199	247	188	193		Figure 6
Patient Unusual Incident Rate	19.8	21.7	21.7	23.6	20.4	22.9	26.1	22.2	20.7	23.1	27.8	21.1	22.6		Figure 7
UI by Severity	Catastrophe	0	0	0	0	1	0	0	1	0	0	0	0		Figure 9
	High	29	35	26	41	28	32	23	32	35	42	29	34		
	Medium	69	71	90	101	81	107	93	86	83	87	99	88		
	Low	74	72	63	73	59	53	96	74	56	70	91	65	71	
Physical Assault Incident Rate	5.2	5.6	5.9	6.6	5.5	4.9	8.2	6.7	4.5	4.7	6.2	5.3	5.8		
Selected Types of Incidents	Physical Assault	42	43	46	55	41	40	64	55	36	38	51	44	46	Figure 10
	Aggressive Behav.	45	45	48	67	48	65	62	57	61	71	102	66	61	
	Psych Emergency	23	30	31	52	34	53	34	48	48	45	86	56	45	
	Fall	19	17	16	18	25	26	24	22	20	25	24	25	22	
	Injury	23	41	37	47	30	34	43	34	24	26	39	37	35	
Physical Assaults by Severity	High	5	8	11	16	7	8	8	13	10	7	19	14	13	Figure 11
	Medium	16	18	19	18	12	16	17	16	8	15	10	18	15	
	Low	21	17	16	21	22	16	39	26	18	16	22	12	21	
Patient Injury Rate***	0.12	0.39	0.38	0.60	0.00	0.12	0.64	0.24	0.63	0.12	0.36	0.48	0.34	0.38	Figure 12
Patients with Major Injuries***	1	3	3	5	0	1	5	2	5	1	3	4	3		
Total Patients Injured***	15	26	25	36	22	26	30	23	15	16	23	28	24		
Total Staff Injured***	13	16	18	17	11	19	20	22	16	12	29	13	17		Figure 13
Elopement Rate	0.00	0.26	0.13	0.12	0.13	0.00	0.00	0.12	0.25	0.00	0.00	0.00	0.09	0.13	Figure 16
Medication Variance Rate	2.59	3.01	1.02	2.38	4.92	2.71	6.80	3.79	5.04	3.59	3.62	3.60	3.58		Figure 17
Adverse Drug Reaction Rate	0.25	0.13	1.02	1.07	0.53	1.60	1.28	0.98	0.76	0.62	0.24	0.36	0.74		Figure 18
Missing Med-Admin Documentation	0.60%	0.67%	0.76%	0.79%	0.77%	0.44%	0.37%	0.53%	0.47%	0.66%	0.64%	0.60%	0.61%		Figure 19
Percent of Medication Refusal	5.53%	5.66%	5.73%	5.59%	5.15%	4.60%	4.95%	5.38%	5.71%	5.82%	7.06%	6.48%	5.64%		Figure 20
Percent of Patients Restrained	0.3%	0.7%	0.0%	0.3%	0.0%	0.0%	0.6%	0.7%	0.7%	0.3%	0.6%	1.0%	0.4%	5.8%	Figure 14
Percent of Patients Secluded	1.3%	2.1%	0.3%	1.6%	1.7%	1.7%	1.9%	2.6%	2.7%	1.6%	3.8%	3.8%	2.1%	2.4%	
Restraint Hours Rate	0.011	0.034	0.000	0.003	0.000	0.000	0.021	0.048	0.022	0.077	0.108	0.030	0.030	0.71	Figure 15
Seclusion Hours Rate	0.017	0.094	0.034	0.052	0.068	0.095	0.063	0.127	0.118	0.073	0.085	0.049	0.073	0.44	

* National Public Rate, NASMHPD Research Institute, National Research Institute (NRI), Data as of June 2013, Published in November 2013.

** Percentage of patients returning within 30 days of discharges that occurred during month

*** Refer to the next page [UI & Medication]

Performance Related Information for Staff & Managers

3. Unusual Incident & Medication

Data Source: UI DB, MV DB, ADR DB, and Avatar

Updated as of 10/17/14

Category	Oct-13	Nov-13	Dec-13	Jan-14	Feb-14	Mar-14	Apr-14	May-14	Jun-14	Jul-14	Aug-14	Sep-14	Monthly Average	Total (12mths)	NPR* (Jun-13)	
Unusual Incidents (excluding MV)**	Total UIs	172	178	179	215	169	192	212	193	174	199	247	188	193	2318	
	Major UIs Only	127	128	123	141	129	142	146	147	126	150	186	145	141	1690	
	Pt Involved UI Only	160	166	170	198	153	186	203	181	164	187	230	176	181	2174	
	Patient UI Rate	19.8	21.7	21.7	23.6	20.4	22.9	26.1	22.2	20.7	23.1	27.8	21.1	22.6		
	Unique Pts Involved in UI	112	100	104	115	105	103	130	106	100	107	115	105	109	1302	
Selected Types of Incidents	Physical Assault	42	43	46	55	41	40	64	55	36	38	51	44	46	555	
	Aggressive Behavior	45	45	48	67	48	65	62	57	61	71	102	66	61	737	
	Psych Emergency	23	30	31	52	34	53	34	48	48	45	86	56	45	540	
	Fall	19	17	16	18	25	26	24	22	20	25	24	25	22	261	
	Injury	23	41	37	47	30	34	43	34	24	26	39	37	35	415	
Physical Assault Rate	5.2	5.6	5.9	6.6	5.5	4.9	8.2	6.7	4.5	4.7	6.2	5.3	5.8			
UI by Severity	Catastrophe	0	0	0	0	1	0	1	0	0	0	0	0	0	2	
	High	29	35	26	41	28	32	23	32	35	42	57	29	34	409	
	Medium	69	71	90	101	81	107	93	86	83	87	99	94	88	1061	
	Low	74	72	63	73	59	53	96	74	56	70	91	65	71	846	
Physical Assaults by Severity	High	5	8	11	16	7	8	8	13	10	7	19	14	13	126	
	Medium	16	18	19	18	12	16	17	16	8	15	10	18	15	183	
	Low	21	17	16	21	22	16	39	26	18	16	22	12	21	246	
Total Patients Injured***	15	26	25	36	22	26	30	23	15	16	23	28	24	285		
Patients with Major Injuries***	1	3	3	5	0	1	5	2	5	1	3	4	3	33		
Patient Injury Rate***	0.12	0.39	0.38	0.60	0.00	0.12	0.64	0.24	0.63	0.12	0.36	0.48	0.34		0.38	
Total Staff Injured**	13	16	18	17	11	19	20	22	16	12	29	13	17			
Total UIs Documented in Avatar	0	2	1	1	1	0	0	1	2	0	0	0	1	9		
Elopement Rate	0.00	0.26	0.13	0.12	0.13	0.00	0.00	0.12	0.25	0.00	0.00	0.00	0.09		0.13	
Med Variance (MV) Reports**	21	23	8	20	37	22	53	31	40	29	30	30	29	344		
MV Rate	2.59	3.01	1.02	2.38	4.92	2.71	6.80	3.79	5.04	3.59	3.62	3.60	3.58			
Adverse Drug Reactions Reports	2	1	8	9	4	13	10	8	6	5	2	3	6	71		
ADR Rate	0.25	0.13	1.02	1.07	0.53	1.60	1.28	0.98	0.76	0.62	0.24	0.36	0.74			
Total Med Administrations Scheduled	95559	101422	102249	108474	98616	107326	104201	108187	104448	107179	105835	103590		1247086		
Total Missing Documentations	570	684	780	860	759	469	381	568	493	704	680	626		7574		
Percent of Missing Documentation	0.60%	0.67%	0.76%	0.79%	0.77%	0.44%	0.37%	0.53%	0.47%	0.66%	0.64%	0.60%		0.61%		
Total Medication Doses Refused	5280	5743	5861	6059	5080	4937	5163	5823	5969	6239	7472	6712		70338		
Percent of Medication Refusal	5.53%	5.66%	5.73%	5.59%	5.15%	4.60%	4.95%	5.38%	5.71%	5.82%	7.06%	6.48%		5.64%		
Total STAT Orders	60	72	62	137	76	125	85	89	91	78	209	178	105		Figure 21	
Total STAT Events****	32	38	32	67	43	58	44	51	40	50	104	90	54			
Total Individuals Involved >=1 STAT	22	20	17	24	24	16	29	25	21	19	37	43	25			
Total Patients with >=3 STAT Events	2	3	5	8	4	8	2	7	3	7	12	9	6			

* National Public Rate, NASMHPD Research Institute, National Research Institute (NRI), Data as of June 2013, Published in November 2013.

** Numbers may change if any additional UI report is made after the data run date from UI database (around the 15th of the following month); According to the revised UI policy as of November 4, 2013, a medication variance (MV) incident became no longer considered to be an unusual incident, and a medication or vital sign refusal incident is not longer an UI as of May 2014. UI data for the past 12 months in this report has been updated to reflect this change and reanalyzed in order to show the UI trend in consistent logic.

*** Injury is broadly defined to include any type of injuries regardless of the cause or severity level. The total number of patients injured represents all of the reported injuries including minor injuries treated with first aid alone. However, the patient injury rate considers only the number of patient injuries that required beyond first-aid level treatment based on the NRI definition and the patient injury rate is the number of 'major' patient injuries per every 1000 inpatient days

**** One STAT event may involve more than one STAT order for the same patient. Any orders placed within 20 minute timeframe are considered to belong to one STAT event.

Performance Related Information for Staff & Managers

4. Restraint & Seclusion

Data Source: Restraint/Seclusion Log and UI DB (for # of total events and patients) and Avatar (for patient days/hours)

Updated as of 10/17/14

Category	Oct-13	Nov-13	Dec-13	Jan-14	Feb-14	Mar-14	Apr-14	May-14	Jun-14	Jul-14	Aug-14	Sep-14	Monthly Average	Total (12mths)	NPR* (Jun-13)
Number of Restraint Events	2	2	0	1	0	0	2	6	4	7	7	6	3.1	37	
Number of Unique Patients Restrained	1	2	0	1	0	0	2	2	2	1	2	3	1.3		
Percentage of Patients Restrained	0.3%	0.7%	0.0%	0.3%	0.0%	0.0%	0.6%	0.7%	0.7%	0.3%	0.6%	1.0%	0.4%		5.8%
Total Restraint Hours (h:mm)	2:08	6:15	0:00	0:35	0:00	0:00	4:00	9:30	4:16	15:00	21:25	6:00	5:45	69:09	
Restraint Hours Rate	0.011	0.034	0.000	0.003	0.000	0.000	0.021	0.048	0.022	0.077	0.108	0.030	0.030		0.71
Number of Seclusion Events	4	11	6	6	13	15	10	20	22	14	21	17	13.3	159	
Number of Unique Patients Secluded	4	6	1	5	5	5	6	8	8	5	12	12	6.4		
Percentage of Patients Secluded	1.3%	2.1%	0.3%	1.6%	1.7%	1.7%	1.9%	2.6%	2.7%	1.6%	3.8%	3.8%	2.1%		2.4%
Total Seclusion Hours (h:mm)	3:20	17:11	6:20	10:34	12:15	18:27	11:47	24:49	22:32	14:14	16:51	9:52	14:01	168:12	
Seclusion Hours Rate	0.017	0.094	0.034	0.052	0.068	0.095	0.063	0.127	0.118	0.073	0.085	0.049	0.073		0.44

* National Public Rate, NASMHPD Research Institute, National Research Institute (NRI), Data as of June 2013, Published in November 2013.

Performance Related Information for Staff & Managers

5. Demographic Information of Individuals in Care

Data Source: Avatar

Updated as of 10/17/14

Category	Sub-group	Oct-13	Nov-13	Dec-13	Jan-14	Feb-14	Mar-14	Apr-14	May-14	Jun-14	Jul-14	Aug-14	Sep-14	Monthly Average	Percent*
Total Active (on Roll) at End of Month*		261	256	266	273	268	263	270	268	271	272	276	278	269	
Gender	Female	68	69	72	79	75	76	82	84	81	82	88	92	79	29.4%
	Male	193	187	194	194	193	187	188	184	190	190	188	186	190	70.6%
Age	Median Age (Years)	56 yrs	56 yrs	56 yrs	56 yrs	57 yrs	56 yrs	56 yrs	57 yrs	57 yrs	55 yrs	56 yrs	55 yrs	56 yrs	
	<30 years old	22	18	21	22	17	18	18	15	17	21	25	29	20	7.5%
	>=30 and <40 years old	25	26	30	30	28	30	30	29	34	36	34	34	31	11.4%
	>=40 and <50 years old	40	45	43	44	40	36	37	37	39	40	39	34	40	14.7%
	>=50 and <60 years old	82	75	78	77	82	78	82	80	78	78	80	84	80	29.6%
	>=60 years old	92	92	94	100	101	101	103	107	103	97	98	97	99	36.8%
Legal Status of Individuals on Roll at End of Month	Emergency	18	19	26	34	33	35	31	36	33	28	25	27	29	10.7%
	Inpatient Commitment	24	23	23	26	28	28	30	31	33	36	39	34	30	11.0%
	Outpatient Commitment	25	23	22	22	22	32	19	18	22	28	23	23	23	8.7%
	Voluntary	42	41	41	41	47	43	38	41	36	36	40	37	40	15.0%
	Civil Sub-total	109	106	112	123	130	138	118	126	124	128	127	121	122	45.4%
	DC Exam	48	49	54	54	41	38	35	30	30	28	30	31	39	14.5%
	Mentally Incompetent	2	1	1	1	1	2	21	17	21	27	28	36	13	4.9%
	Forensic Pre-trial Sub-total	50	50	55	55	42	40	56	47	51	55	58	67	52	19.4%
	NGBRI - DC	86	83	82	77	78	77	79	79	80	74	75	74	79	29.3%
	NGBRI - US	11	12	12	13	13	13	12	12	12	11	11	11	12	4.4%
NGBRI - VI	1	1	1	1	1	1	1	1	1	1	1	1	1	0.4%	
Dual Commitment	2	2	2	2	2	2	2	1	1	1	2	2	2	0.7%	
Sexual Psychopath (Miller Act)	2	2	2	2	2	2	2	2	2	2	2	2	2	0.7%	
Forensic Post-trial Sub-total	102	100	99	95	96	95	96	95	96	89	91	90	95	35.5%	
Length of Stay	Median LOS (Days)	1003 d	938 d	646 d	568 d	628 d	627 d	570 d	557 d	522 d	506 d	424 d	394 d	615 d	
	Average LOS (Days)	3108 d	3097 d	2956 d	2885 d	2950 d	2962 d	2800 d	2772 d	2756 d	2669 d	2545 d	2516 d	2835 d	
	<30 Days	25	25	30	35	29	27	51	34	30	35	40	35	33	12.3%
	>=30 ~ <365 Days	83	80	85	89	87	85	67	85	92	92	92	100	86	32.2%
	>= 1 Year & < 2 Years	14	18	19	19	23	23	26	24	24	22	25	27	22	8.2%
	>= 2 Years & < 5 Years	37	33	34	32	31	32	32	33	32	32	29	27	32	11.9%
	>= 5 Years & < 20 Years	57	56	53	53	53	52	52	51	51	50	50	49	52	19.5%
>= 20 Years	45	44	45	45	45	44	42	41	42	41	40	40	43	16.0%	

* Counts the total number of individuals who are on the hospital roll at end of each month. This number serves as denominator to calculate percentage of each group.

Performance Related Information for Staff & Managers

6. Major Unusual Incidents by Incident Location/Unit

Data Source: UI DB

Updated as of 10/17/14

Category		Oct-13	Nov-13	Dec-13	Jan-14	Feb-14	Mar-14	Apr-14	May-14	Jun-14	Jul-14	Aug-14	Sep-14	Monthly Average	Total (12mths)	Percent
Total Unusual Incidents		172	178	179	215	169	192	212	193	174	199	247	188	193	2318	100%
Incident Location	1A	10	4	6	5	6	11	6	14	4	7	15	4	8	92	4%
	1B	14	8	7	13	16	13	7	9	9	21	19	9	12	145	6%
	1C	17	15	13	11	9	11	17	7	11	6	12	17	12	146	6%
	1D	10	10	14	27	17	27	11	27	22	19	29	20	19	233	10%
	1E	7	15	10	26	9	33	22	17	13	12	22	20	17	206	9%
	1F	27	28	34	39	33	24	27	19	15	37	32	28	29	343	15%
	1G	15	14	34	29	14	6	22	27	24	12	28	20	20	245	11%
	2A	8	5	3	1	7	3	5	3	3	6	10	7	5	61	3%
	2B	4	2	4	2	2	3	6	4	0	2	4	8	3	41	2%
	2C	10	20	20	10	12	15	19	19	19	22	19	9	16	194	8%
	2D	17	22	9	14	14	14	34	16	13	20	18	17	17	208	9%
	TLC	25	24	16	28	14	22	21	17	24	14	20	14	20	239	10%
	Other	8	11	9	10	16	10	15	14	17	21	19	15	14	165	7%
Physical Assault		42	43	46	55	41	40	64	55	36	38	51	44	46	555	100%
Incident Location	1A	3	1	2	2	1	1	1	5	0	2	2	1	2	21	4%
	1B	2	1	0	0	4	0	1	3	1	3	0	2	1	17	3%
	1C	4	4	3	3	2	0	5	2	3	1	0	3	3	30	5%
	1D	5	4	3	4	7	13	4	8	8	5	14	11	7	86	15%
	1E	2	6	4	13	0	12	8	7	3	5	2	4	6	66	12%
	1F	3	3	8	7	5	1	7	4	2	5	3	5	4	53	10%
	1G	5	8	16	10	8	3	8	9	4	3	8	9	8	91	16%
	2A	0	0	0	0	0	0	0	0	0	0	0	0	0	0	0%
	2B	0	0	0	0	0	0	0	0	0	2	0	0	0	2	0%
	2C	3	3	3	4	5	2	7	5	7	4	3	2	4	48	9%
	2D	8	8	4	6	4	3	15	8	3	1	11	4	6	75	14%
	TLC - Intensive	5	2	2	4	5	3	5	3	2	2	3	0	3	36	6%
	TLC - Transitional	1	3	0	1	0	1	1	0	0	2	4	3	1	16	3%
	Other	1	0	1	1	0	1	2	1	3	3	1	0	1	14	3%

Performance Related Information for Staff & Managers

6. Major Unusual Incidents by Incident Location/Unit

Data Source: UI DB

Updated as of 10/17/14

Category		Oct-13	Nov-13	Dec-13	Jan-14	Feb-14	Mar-14	Apr-14	May-14	Jun-14	Jul-14	Aug-14	Sep-14	Monthly Average	Total (12mths)	Percent
Aggressive Behavior		45	45	48	67	48	65	62	57	61	71	102	66	61	737	133%
Incident Location	1A	0	0	0	0	2	0	0	0	1	1	5	1	1	10	2%
	1B	0	0	0	0	1	4	0	0	0	3	7	4	2	19	3%
	1C	4	3	3	1	4	3	3	0	1	3	6	7	3	38	7%
	1D	2	2	0	8	3	9	2	10	5	4	12	7	5	64	12%
	1E	3	6	3	12	2	14	9	4	3	2	15	11	7	84	15%
	1F	8	15	11	18	19	15	13	9	10	20	18	10	14	166	30%
	1G	10	5	14	9	4	1	10	11	17	5	14	8	9	108	19%
	2A	1	2	2	0	4	1	3	2	2	4	7	3	3	31	6%
	2B	0	0	0	1	1	0	2	1	0	0	1	4	1	10	2%
	2C	3	3	5	2	4	6	3	8	10	12	6	3	5	65	12%
	2D	5	2	3	4	2	4	9	5	2	8	1	2	4	47	8%
	TLC - Intensive	6	3	5	7	1	6	5	6	7	4	3	3	5	56	10%
	TLC - Transitional	3	2	0	4	0	2	3	0	2	3	4	1	2	24	4%
	Other	0	2	2	1	1	0	0	1	1	2	3	2	1	15	3%
	Psych Emergency		23	30	31	52	34	53	34	48	48	45	86	56	45	540
Incident Location	1A	0	0	0	0	1	0	0	0	1	1	1	0	0	4	1%
	1B	0	0	0	0	3	3	0	0	0	2	3	1	1	12	2%
	1C	1	4	1	0	1	1	0	0	2	1	3	2	1	16	3%
	1D	2	1	0	8	3	7	2	10	6	3	18	9	6	69	12%
	1E	2	9	2	15	1	23	8	5	3	1	16	16	8	101	18%
	1F	3	11	10	17	16	10	5	7	4	19	13	10	10	125	23%
	1G	8	5	16	10	5	3	9	16	17	5	16	12	10	122	22%
	2A	0	0	0	0	0	0	2	0	0	0	0	0	0	2	0%
	2B	1	0	0	0	0	0	0	0	0	0	1	0	0	2	0%
	2C	0	0	0	0	1	4	4	4	10	7	7	0	3	37	7%
	2D	4	0	2	1	2	1	3	2	0	3	5	3	2	26	5%
	TLC - Intensive	2	0	0	1	1	1	0	4	4	2	2	0	1	17	3%
	TLC - Transitional	0	0	0	0	0	0	1	0	0	0	1	2	0	4	1%
	Other	0	0	0	0	0	0	0	0	0	1	1	0	1	3	1%

Performance Related Information for Staff & Managers

6. Major Unusual Incidents by Incident Location/Unit

Data Source: UI DB

Updated as of 10/17/14

Category		Oct-13	Nov-13	Dec-13	Jan-14	Feb-14	Mar-14	Apr-14	May-14	Jun-14	Jul-14	Aug-14	Sep-14	Monthly Average	Total (12mths)	Percent
Fall		19	17	16	18	25	26	24	22	20	25	24	25	22	261	100%
Incident Location	1A	2	1	3	2	3	5	1	3	0	1	4	2	2	27	10%
	1B	4	1	2	1	3	2	2	1	1	4	6	4	3	31	12%
	1C	2	1	1	4	2	2	2	4	2	0	1	0	2	21	8%
	1D	2	3	1	1	2	4	1	5	0	5	2	3	2	29	11%
	1E	1	2	1	3	1	1	2	0	2	0	1	1	1	15	6%
	1F	0	0	1	3	1	1	1	0	1	1	3	1	2	14	5%
	1G	0	1	2	0	1	1	1	2	0	2	2	1	1	13	5%
	2A	2	0	0	0	1	0	0	0	0	0	0	0	1	4	2%
	2B	1	2	3	0	1	2	4	0	0	0	0	1	2	16	6%
	2C	0	0	0	0	1	4	1	2	1	3	1	0	1	13	5%
	2D	1	2	0	1	2	2	7	1	4	4	1	5	3	30	11%
	TLC - Intensive	2	2	2	0	0	0	1	0	1	0	0	0	1	9	3%
	TLC - Transitional	1	1	0	0	1	0	1	1	2	1	2	1	1	11	4%
	Other	1	1	0	3	6	2	0	3	6	2	2	2	2	28	11%
Physical Injury		23	41	37	47	30	34	43	34	24	26	39	37	35	415	100%
Incident Location	1A	1	2	1	0	1	4	3	3	2	2	2	1	2	22	5%
	1B	0	2	0	1	2	2	1	3	1	4	2	1	2	19	5%
	1C	1	2	3	3	2	1	0	2	2	0	2	1	2	19	5%
	1D	4	5	4	11	6	5	1	6	2	3	6	8	5	61	15%
	1E	2	6	2	7	1	8	6	3	3	5	4	2	4	49	12%
	1F	1	2	10	10	5	1	3	1	1	1	4	12	4	51	12%
	1G	5	4	11	3	5	2	5	9	2	2	6	0	5	54	13%
	2A	1	1	0	0	0	0	0	0	0	0	0	0	1	3	1%
	2B	1	1	1	0	1	2	1	1	0	1	0	1	1	10	2%
	2C	1	3	1	4	1	5	7	2	2	3	4	2	3	35	8%
	2D	2	4	3	3	3	2	8	1	1	2	1	4	3	34	8%
	TLC - Intensive	1	4	1	2	1	2	2	1	2	1	2	0	2	19	5%
	TLC - Transitional	1	2	0	0	0	0	0	0	2	0	2	2	1	9	2%
	Other	2	3	0	3	2	0	6	2	4	2	4	2	3	30	7%

* Not every incident is a major incident. This counts only those incidents that were classified to be major based on the policy.