

**Government of the District of Columbia  
Department of Mental Health (DMH)**

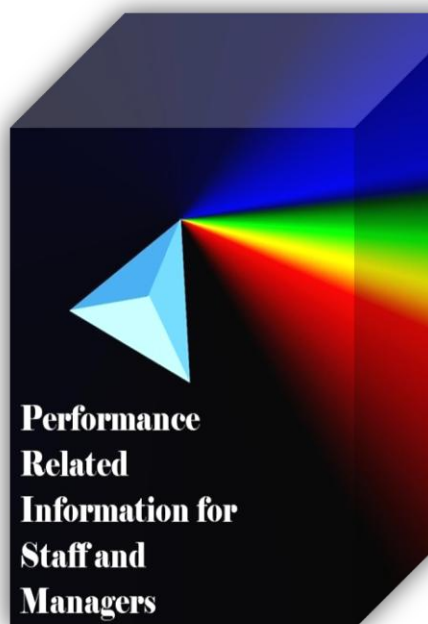


**Performance Related Information for Staff and Managers**

# **PRISM**

## **OCTOBER 2011**

Table of Contents

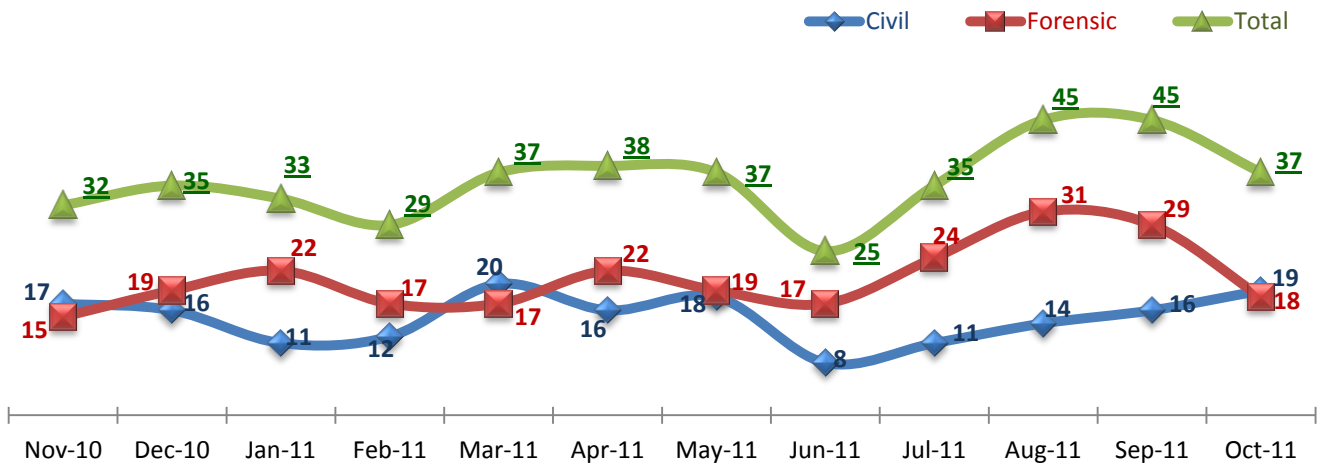


1.	Admissions to SEH .....	1
2.	Discharges from SEH.....	1
3.	Average Daily Census .....	1
4.	Transfers .....	2
5.	30-Day Readmission Rate .....	2
6.	Unusual Incidents.....	2
7.	Patient-Involved Unusual Incidents.....	3
8.	Selected Types of Incidents .....	3
9.	Physical Assaults by Severity .....	3
10.	Patient Injuries .....	4
11.	Staff Injuries.....	4
12.	Eloperments .....	4
13.	Reported Medication Variances .....	5
14.	Reported Adverse Drug Reactions .....	5
15.	Percent of Missing Documentation on Med-Administration.....	5
16.	Emergency Involuntary Medications Documented in eMar .....	6
17.	Percent of Patients Restrained or Secluded.....	6
18.	Restraint Hours Rate & Seclusion Hours Rate .....	6
	<input type="checkbox"/> Appendix 1) Table – Census, Admissions & Discharges	
	<input type="checkbox"/> Appendix 2) Table – Key Performance Indicators	
	<input type="checkbox"/> Appendix 3) Table – Unusual Incident & Medication	
	<input type="checkbox"/> Appendix 4) Table – Restraint & Seclusion	
	<input type="checkbox"/> Appendix 5) Table – Major Incidents by Incident Location/Unit	
	<input type="checkbox"/> Appendix 6) Table – Demographic Information of Individuals in Care	

**11/14/2011**

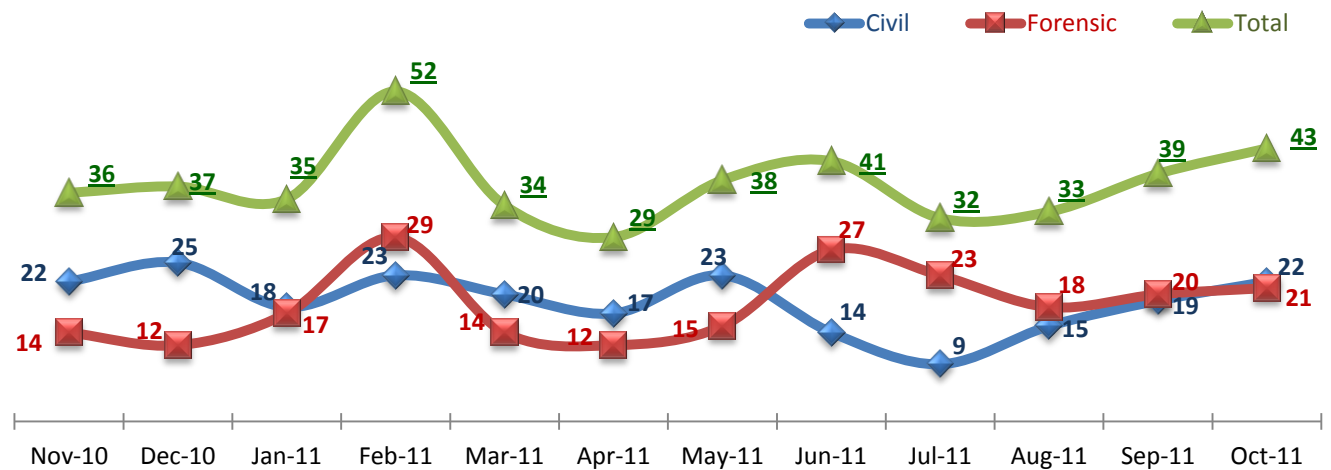
**Office of Statistics and Reporting (OSR)**

### 1. Admissions to SEH



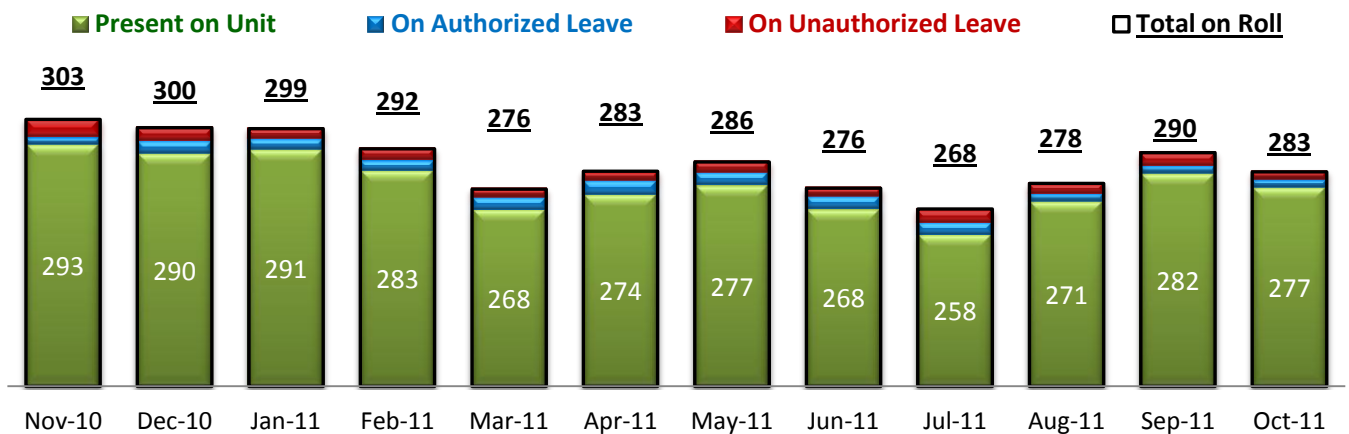
\* Number of admissions to SEH inpatient program, including transfers from outpatient to inpatient program.

### 2. Discharges from SEH



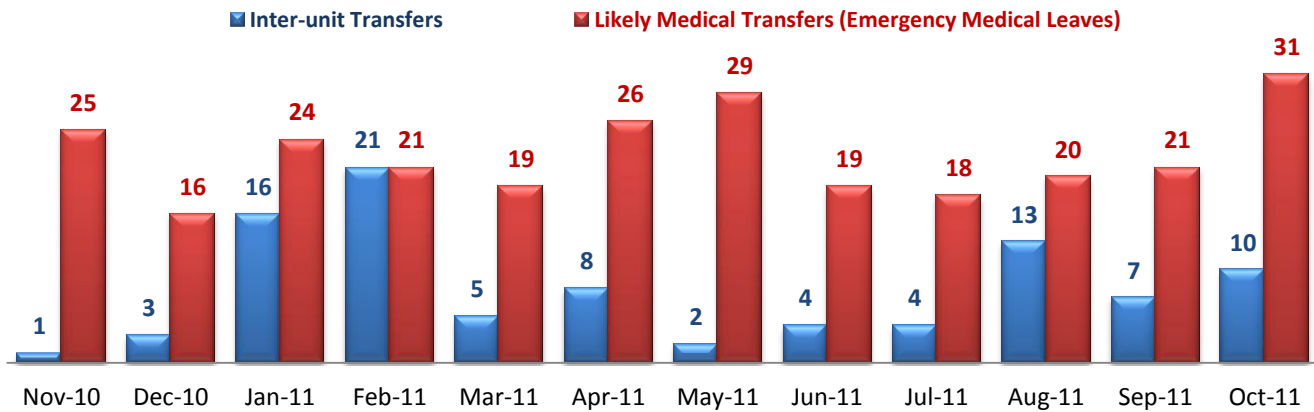
\* Number of discharges from SEH inpatient program, including transfers from inpatient to outpatient program.

### 3. Average Daily Census



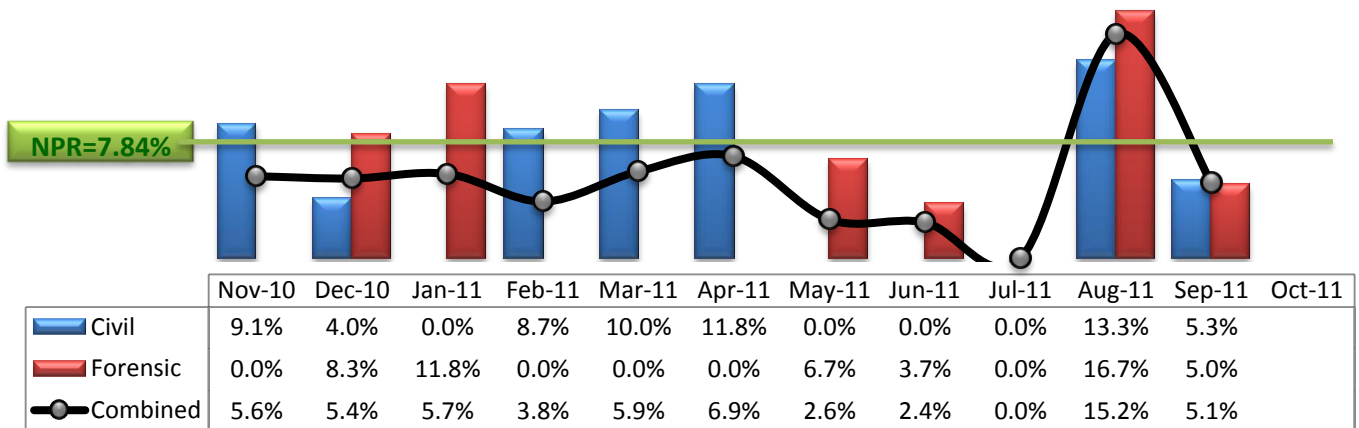
\* Data above is the daily average number of individuals counted at 11:59 PM every day during each month.

### 4. Transfers



\* Number of inter-unit transfers that occurred during month and number of emergency medical leaves that were initiated during month.

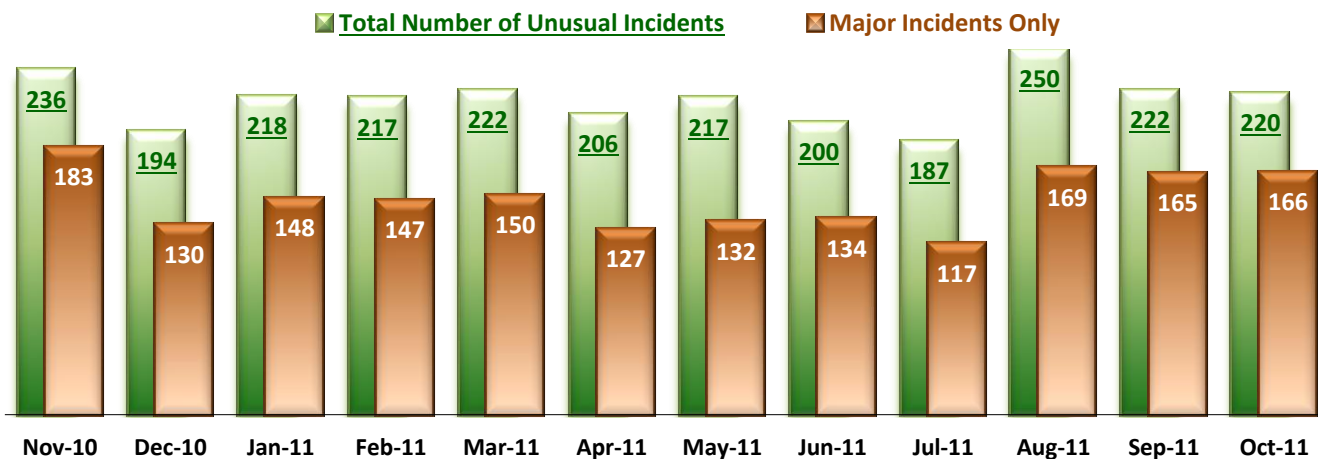
### 5. 30-Day Readmission Rate



\* Percent of discharges that returned to SEH within 30 days of discharges. It does not include those who may have been re-hospitalized to another psychiatric facility. This measure requires 30-day observation following discharge.

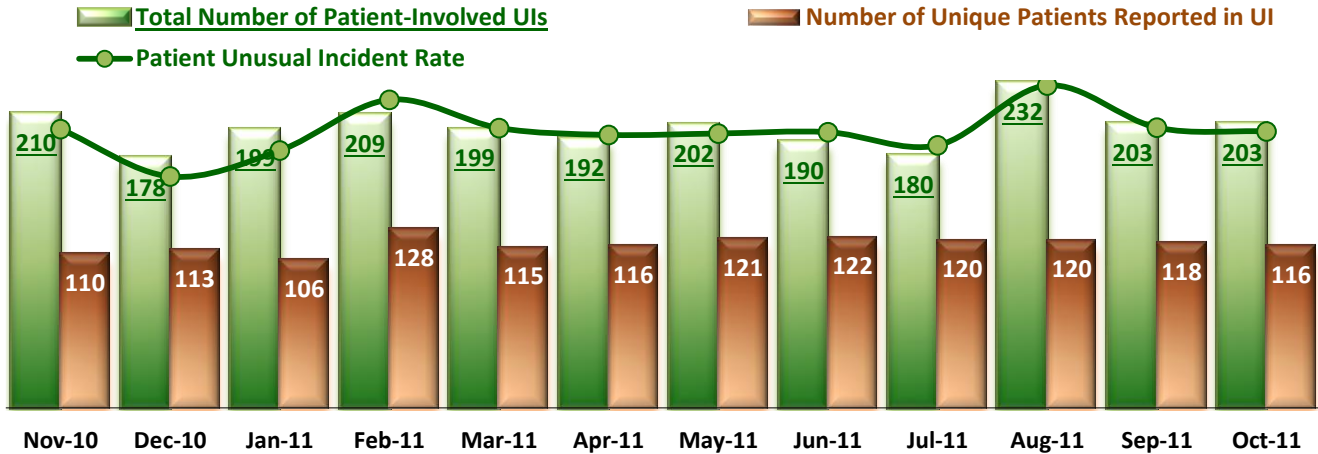
\*\* NPR: National Public Rate as of December 2009 published by NASMHPD Research Institute in May 2010.

### 6. Unusual Incidents



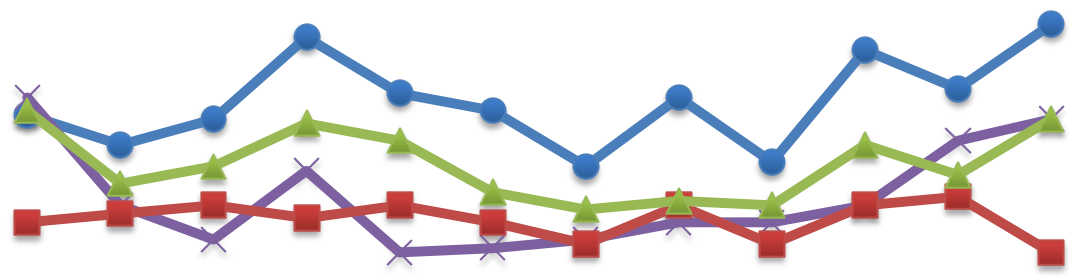
\* Numbers above represent all types of the unusual incidents (UIs) that were reported to the Risk Manager by PRISM publication date, including those that did not involve any patients.

### 7. Patient-Involved Unusual Incidents



\*The total number of patient-involved UIs counts only those incidents that involved at least one or more patients. Some patients may be involved in more than one incident and the number of unique patients does not double count them. The patient UI rate is the number of patient-involved unusual incidents reported for every 1000 inpatient days.

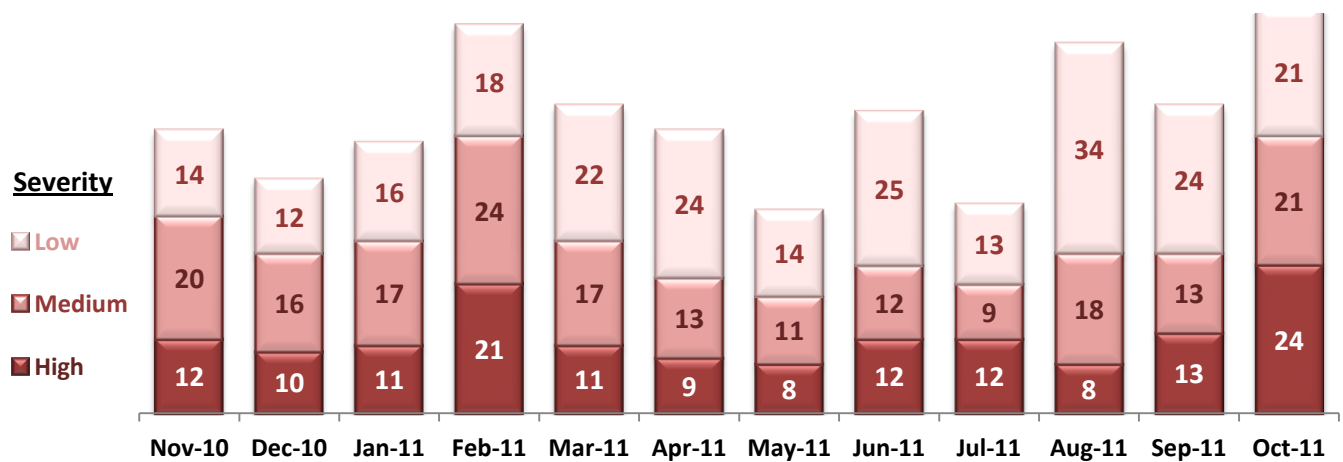
### 8. Selected Types of Incidents



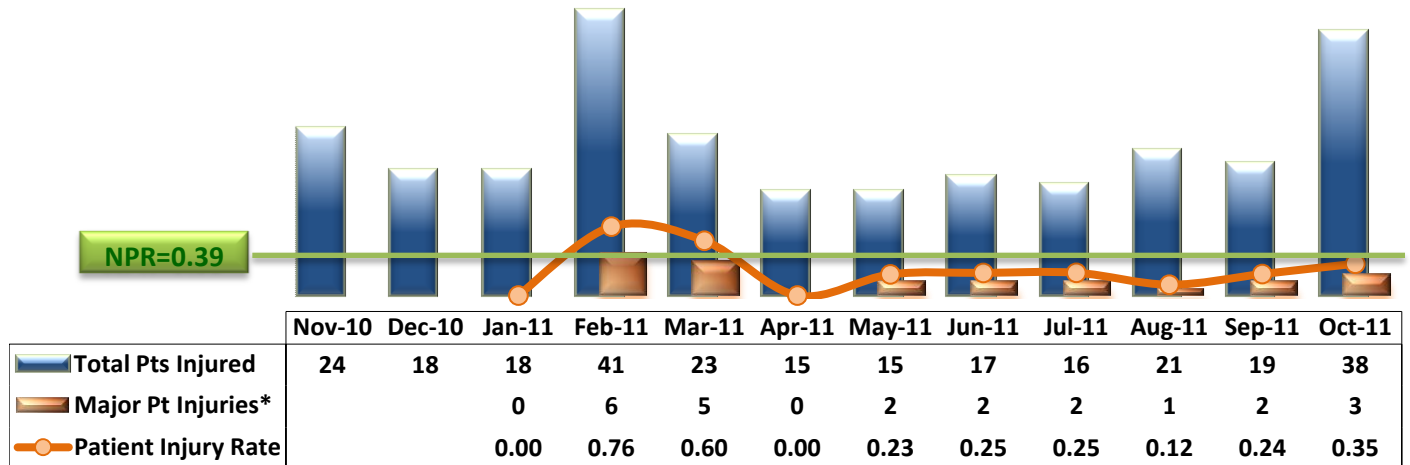
	Nov-10	Dec-10	Jan-11	Feb-11	Mar-11	Apr-11	May-11	Jun-11	Jul-11	Aug-11	Sep-11	Oct-11
Physical Assault	45	38	44	63	50	46	33	49	34	60	51	66
Psych Emergency	49	24	16	32	13	14	16	20	20	24	39	44
Fall	20	22	24	21	24	20	15	24	15	24	26	13
Injury	46	29	33	43	39	27	23	25	24	38	31	44

\* These are incident types that are frequently reported. Some incidents may be counted in multiple categories. For example, a physical assault incident that accompanied psychiatric emergency and injury is counted under psychiatric emergency and injury as well as under physical assault. Injury is broadly defined to include any type of injuries regardless of the cause or severity level.

### 9. Physical Assaults by Severity

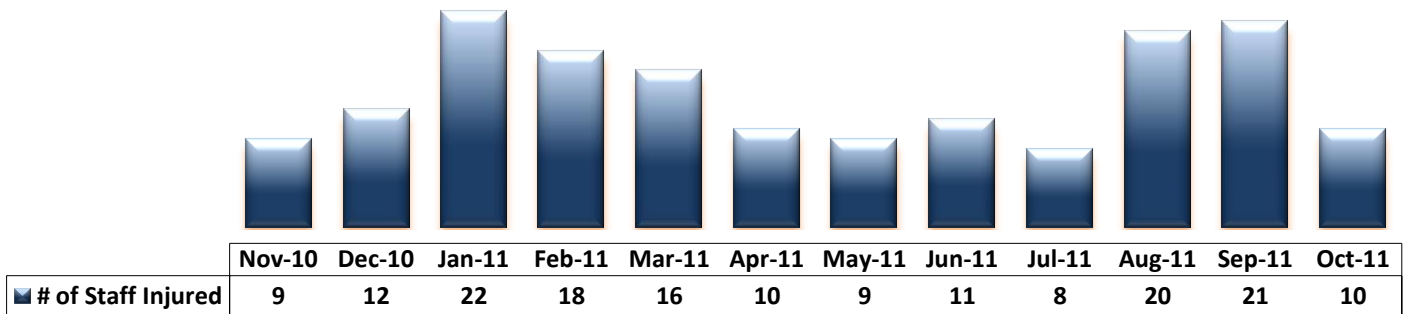


### 10. Patient Injuries



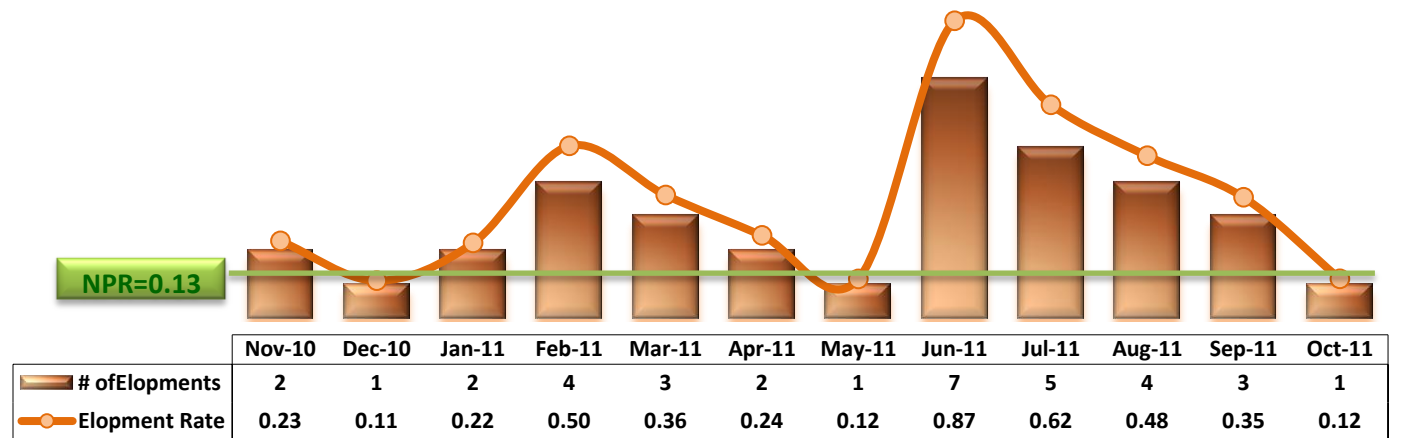
\* Injury is broadly defined to include any type of injuries regardless of the cause or severity level. The total number of patients injured represents all of the reported injuries including minor injuries treated with first aid alone. However, the patient injury rate considers only the number of patient injuries that required beyond first-aid level treatment based on the NRI definition and the patient injury rate is the number of 'major' patient injuries per every 1000 inpatient days. The major patient injury data became available in January 2011.

### 11. Staff Injuries



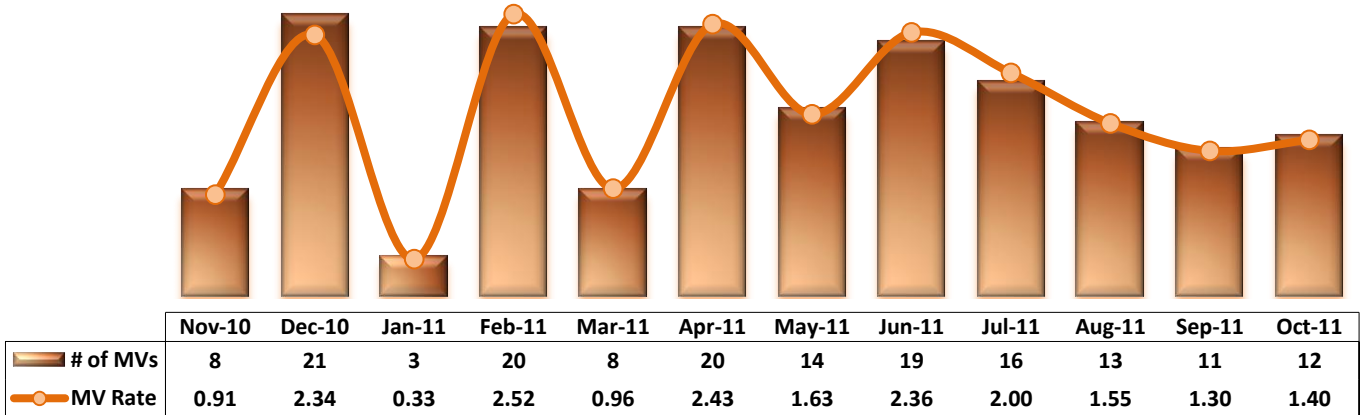
\* Injury is broadly defined to include any type of injuries regardless of the cause or severity level. The total number of staff injured represents all of the reported staff injuries including minor injuries treated with first aid alone.

### 12. Elopements



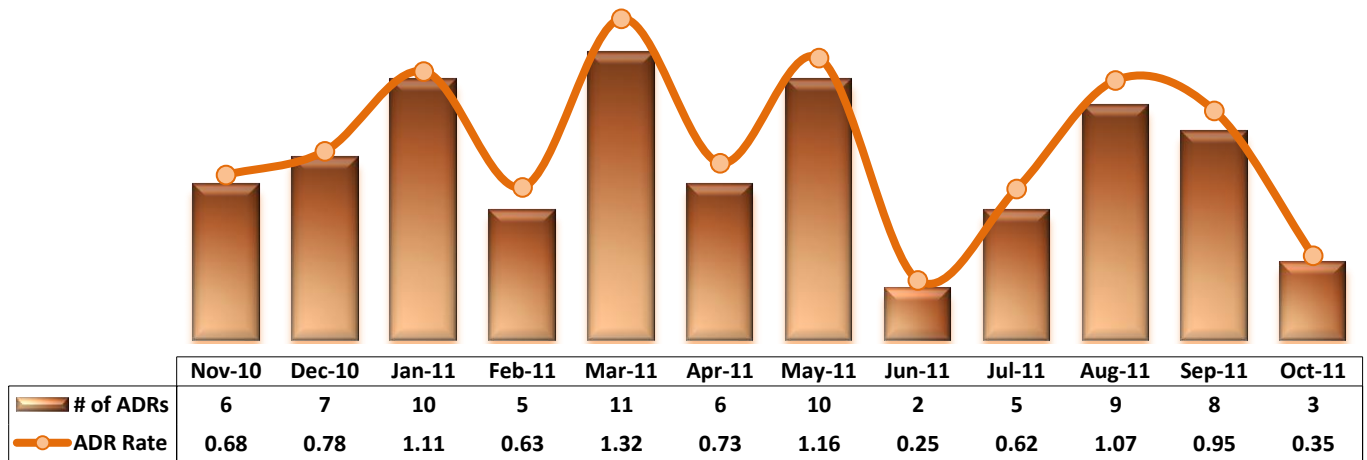
\* It counts the total number of unauthorized leaves for any duration that were initiated during month and were recorded in Avatar. The elopement rate is the number of those unauthorized leaves that occurred for every 1000 inpatient days.

### 13. Reported Medication Variances



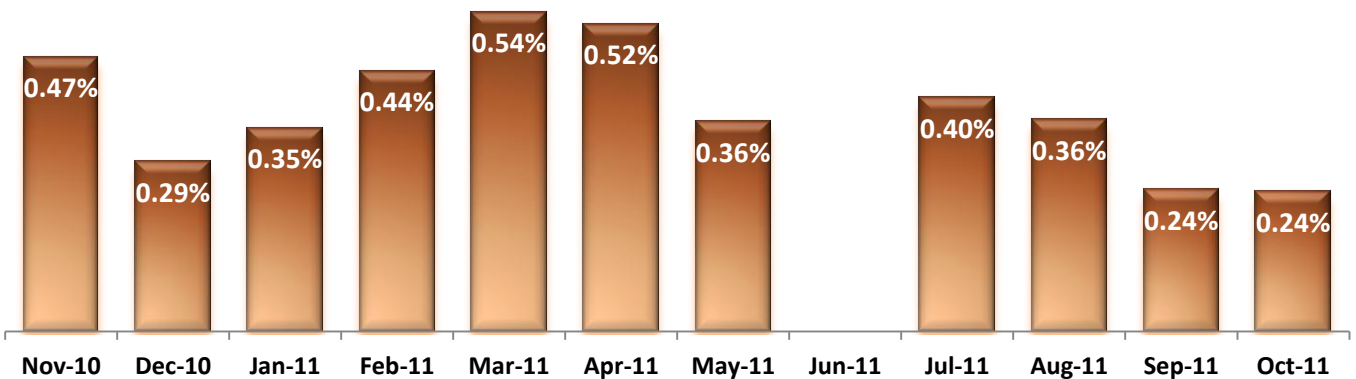
\* MV Rate: Number of reported medication variance events that occurred for every 1000 inpatient days.

### 14. Reported Adverse Drug Reactions



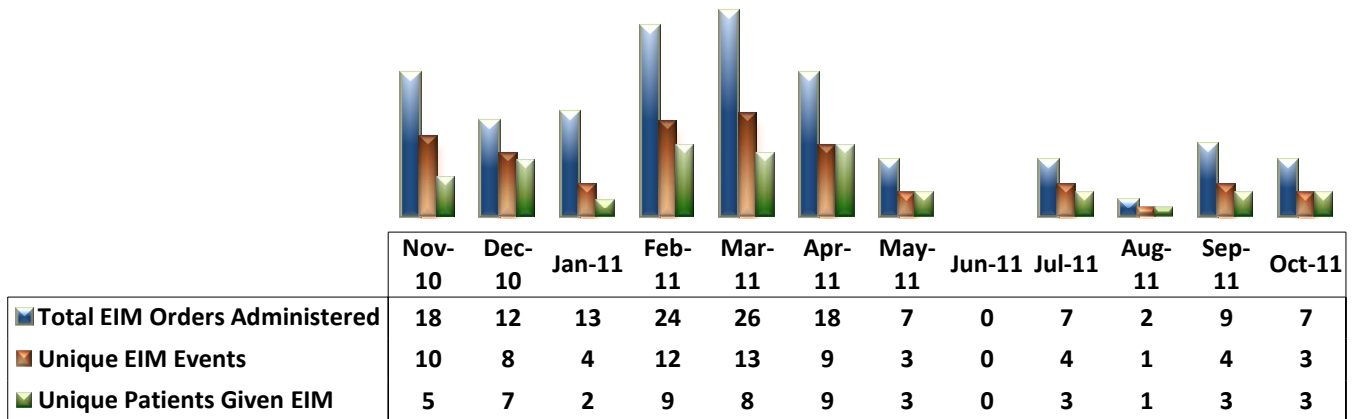
\* ADR Rate: Number of reported adverse drug reaction events that occurred for every 1000 inpatient days.

### 15. Percent of Missing Documentation on Med-Administration



\* June-2011 data is not available because of data tracking interruption caused by a technical glitch in Avatar. September-2011 data does not include administration records associated with new orders placed between 9/22/11 and 9/25/11 due to a technical issue that occurred in Avatar and Worx during that time period.

### 16. Emergency Involuntary Medications Documented in eMar

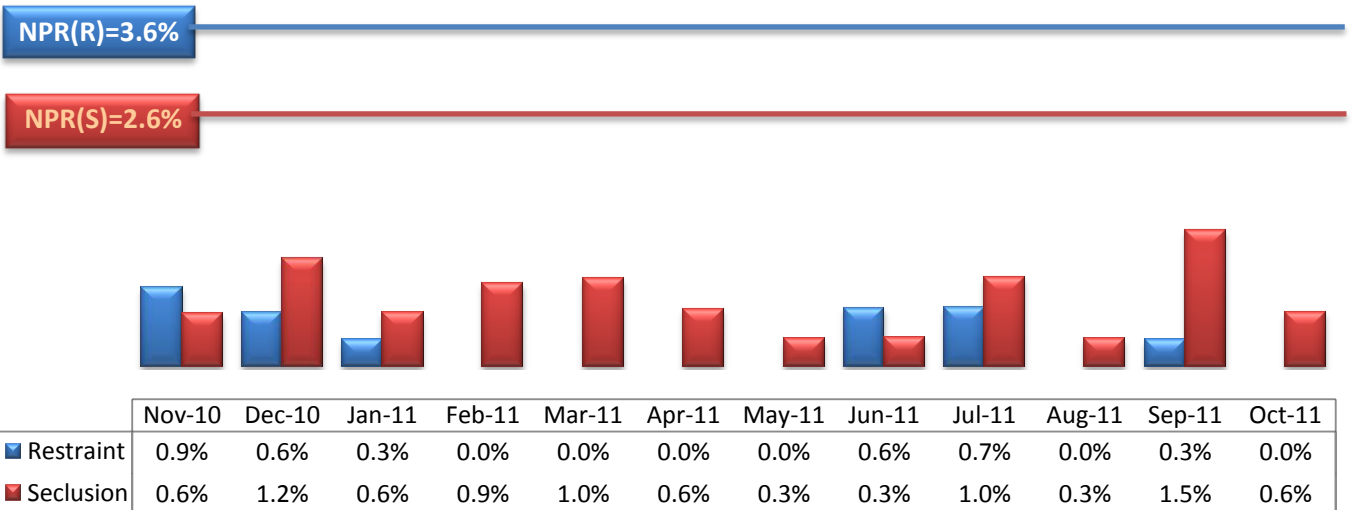


\* Some patients may have experienced multiple EIM events during month and some events may have involved multiples doses of medication ordered and administered.

\*\* Unusual incident DB suggests that two EIM events occurred in June 2011 while Avatar eMar recorded none.

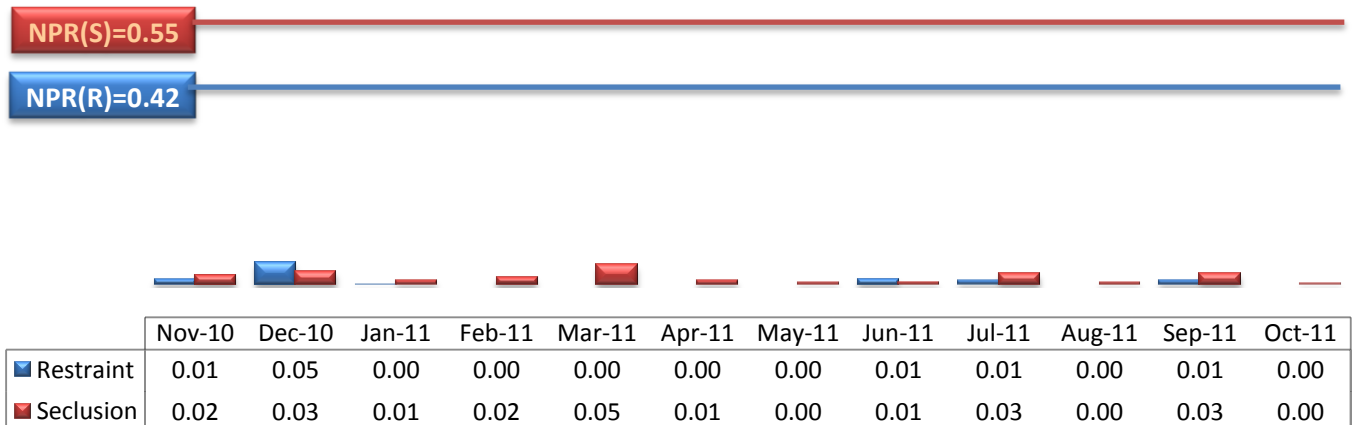
\*\*\* Data prior to October 2011 may include 'now' orders in addition to stat emergency orders.

### 17. Percent of Patients Restrained or Secluded



\* Percent of unique patients who were restrained at least once and percent of unique patients who were secluded at least once.

### 18. Restraint Hours Rate & Seclusion Hours Rate



\* Restraint/Seclusion Hours Rate: Number of hours spent in restraint/seclusion for every 1000 inpatient hours.

## Performance Related Information for Staff &amp; Managers

## 1. Census, Admissions, Discharges &amp; Transfers

Data Source: Avatar

Updated as of 11/14/11

Category	Nov-10	Dec-10	Jan-11	Feb-11	Mar-11	Apr-11	May-11	Jun-11	Jul-11	Aug-11	Sep-11	Oct-11	Monthly Average	Total (12mths)	Figure	
Admissions	Civil	17	16	11	12	20	16	18	8	11	14	16	19	15	178	Figure 1
	Forensic	15	19	22	17	17	22	19	17	24	31	29	18	21	250	
	<b>Total</b>	<b>32</b>	<b>35</b>	<b>33</b>	<b>29</b>	<b>37</b>	<b>38</b>	<b>37</b>	<b>25</b>	<b>35</b>	<b>45</b>	<b>45</b>	<b>37</b>	<b>36</b>	<b>428</b>	
Discharges	Civil	22	25	18	23	20	17	23	14	9	15	19	22	19	227	Figure 2
	Forensic	14	12	17	29	14	12	15	27	23	18	20	21	19	222	
	<b>Total</b>	<b>36</b>	<b>37</b>	<b>35</b>	<b>52</b>	<b>34</b>	<b>29</b>	<b>38</b>	<b>41</b>	<b>32</b>	<b>33</b>	<b>39</b>	<b>43</b>	<b>37</b>	<b>449</b>	
Net Gain During Month	Civil	-5	-9	-7	-11	0	-1	-5	-6	2	-1	-3	-3		-49	
	Forensic	1	7	5	-12	3	10	4	-10	1	13	9	-3		28	
	<b>Total</b>	<b>-4</b>	<b>-2</b>	<b>-2</b>	<b>-23</b>	<b>3</b>	<b>9</b>	<b>-1</b>	<b>-16</b>	<b>3</b>	<b>12</b>	<b>6</b>	<b>-6</b>		<b>-21</b>	
All Individuals on Roll at End of Month	<b>303</b>	<b>301</b>	<b>299</b>	<b>276</b>	<b>279</b>	<b>288</b>	<b>287</b>	<b>271</b>	<b>274</b>	<b>286</b>	<b>291</b>	<b>286</b>	<b>287</b>			
a. Present on Unit	292	289	290	269	275	280	277	261	263	280	281	280	278			
b. On AL	6	7	6	3	1	5	6	5	7	1	6	3	5			
c. On UL	5	5	3	4	3	3	4	5	4	5	4	3	4			
All Individuals on Roll: Daily Average during Month	<b>303</b>	<b>300</b>	<b>299</b>	<b>292</b>	<b>276</b>	<b>283</b>	<b>286</b>	<b>276</b>	<b>268</b>	<b>278</b>	<b>290</b>	<b>283</b>	<b>286</b>			
a. Present on Unit*	<b>293</b>	<b>290</b>	<b>291</b>	<b>283</b>	<b>268</b>	<b>274</b>	<b>277</b>	<b>268</b>	<b>258</b>	<b>271</b>	<b>282</b>	<b>277</b>	<b>278</b>		Figure 3	
b. On AL	3	5	4	4	5	6	5	5	5	3	3	3	4			
c. On UL	7	5	4	4	3	3	4	3	5	4	5	3	4			
Patient Days*	<b>8799</b>	<b>8983</b>	<b>9031</b>	<b>7925</b>	<b>8307</b>	<b>8217</b>	<b>8601</b>	<b>8050</b>	<b>8008</b>	<b>8407</b>	<b>8461</b>	<b>8577</b>	<b>8447</b>	<b>101366</b>		
Inter-Unit Transfers during Month	<b>1</b>	<b>3</b>	<b>16</b>	<b>21</b>	<b>5</b>	<b>8</b>	<b>2</b>	<b>4</b>	<b>4</b>	<b>13</b>	<b>7</b>	<b>10</b>	<b>8</b>	<b>94</b>	Figure 4	
Medical Leaves Initiated during Month	Emergency	25	16	24	21	19	26	29	19	18	20	21	31	22		269
Non-Emer	20	23	26	21	21	35	15	5	12	15	12	14	18	219		
<b>Total</b>	<b>45</b>	<b>39</b>	<b>50</b>	<b>42</b>	<b>40</b>	<b>61</b>	<b>44</b>	<b>24</b>	<b>30</b>	<b>35</b>	<b>33</b>	<b>45</b>	<b>41</b>	<b>488</b>		
Non-Medical Leaves Initiated during Month	<b>81</b>	<b>93</b>	<b>91</b>	<b>111</b>	<b>67</b>	<b>60</b>	<b>56</b>	<b>45</b>	<b>63</b>	<b>63</b>	<b>53</b>	<b>64</b>	<b>71</b>	<b>847</b>		
UL Initiated during Month	<b>2</b>	<b>1</b>	<b>2</b>	<b>4</b>	<b>3</b>	<b>2</b>	<b>1</b>	<b>7</b>	<b>5</b>	<b>4</b>	<b>3</b>	<b>1</b>	<b>3</b>	<b>35</b>		
Total Unique Patients Served during Month	<b>343</b>	<b>334</b>	<b>334</b>	<b>325</b>	<b>308</b>	<b>311</b>	<b>324</b>	<b>308</b>	<b>305</b>	<b>319</b>	<b>331</b>	<b>330</b>	<b>323</b>			
30 Day Readmission **	Civil	2	1	0	2	2	2	0	0	0	2	1		1	12	
	Forensic	0	1	2	0	0	0	1	1	0	3	1		1	9	
	<b>Total</b>	<b>2</b>	<b>2</b>	<b>2</b>	<b>2</b>	<b>2</b>	<b>2</b>	<b>1</b>	<b>1</b>	<b>0</b>	<b>5</b>	<b>2</b>		<b>2</b>	<b>21</b>	

\* Counts the number of patients who are present on the unit and excludes those on authorized or unauthorized leave at 11:59pm on a given day.

\*\* Number of patients returning within 30 days of discharges that occurred during month.



## Performance Related Information for Staff &amp; Managers

## 2. Key Performance Indicators

Data Source: UI DB, ADR DB, Restraint/Seclusion Log, and Avatar

Updated as of 11/14/11

Category	Nov-10	Dec-10	Jan-11	Feb-11	Mar-11	Apr-11	May-11	Jun-11	Jul-11	Aug-11	Sep-11	Oct-11	Monthly Average	NPR* (Dec-09)	Figure
30 Day Readmit (Discharge Cohort)**	Civil	9.1%	4.0%	0.0%	8.7%	10.0%	11.8%	0.0%	0.0%	0.0%	13.3%	5.3%		5.8%	Figure 5
	Forensic	0.0%	8.3%	11.8%	0.0%	0.0%	0.0%	6.7%	3.7%	0.0%	16.7%	5.0%		4.4%	
	Combined	5.6%	5.4%	5.7%	3.8%	5.9%	6.9%	2.6%	2.4%	0.0%	15.2%	5.1%		7.8%	
Number of Unusual Incidents	236	194	218	217	222	206	217	200	187	250	222	220	216		Figure 6
Patient Unusual Incident Rate	23.87	19.82	22.04	26.37	23.96	23.37	23.49	23.60	22.48	27.60	23.99	23.67	23.65		Figure 7
Selected Types of Incidents	Physical Assault	45	38	44	63	50	46	33	49	34	60	51	66	48	Figure 8
	Psych Emergency	49	24	16	32	13	14	16	20	20	24	39	44	26	
	Fall	20	22	24	21	24	20	15	24	15	24	26	13	21	
	Injury***	46	29	33	43	39	27	23	25	24	38	31	44	34	
Physical Assaults by Severity	High	12	10	11	21	11	9	8	12	12	8	13	24	12	Figure 9
	Medium	20	16	17	24	17	13	11	12	9	18	13	21	14	
	Low	14	12	16	18	22	24	14	25	13	34	24	21	22	
Patient Injury Rate***			0.00	0.76	0.60	0.00	0.23	0.25	0.25	0.12	0.24	0.35	0.27	0.39	Figure 10
Patients with Major Injuries***			0	6	5	0	2	2	2	1	2	3	2		
Total Patients Injured***	24	18	18	41	23	15	15	17	16	21	19	38	22		
Total Staff Injured***	9	12	22	18	16	10	9	11	8	20	21	10	14		Figure 11
Elopement Rate	0.23	0.11	0.22	0.50	0.36	0.24	0.12	0.87	0.62	0.48	0.35	0.12	0.47	0.13	Figure 12
Medication Variance Rate	0.91	2.34	0.33	2.52	0.96	2.43	1.63	2.36	2.00	1.55	1.30	1.40	1.63		Figure 13
Adverse Drug Reaction Rate	0.68	0.78	1.11	0.63	1.32	0.73	1.16	0.25	0.62	1.07	0.95	0.35	0.81		Figure 14
Missing Med-Admin Documentation	0.47%	0.29%	0.35%	0.44%	0.54%	0.52%	0.36%		0.40%	0.36%	0.24%	0.24%	0.38%		Figure 15
Emergency Involuntary Meds	18	12	13	24	26	18	7	0	7	2	9	7	12	Figure 16	
Unique EIM Events	10	8	4	12	13	9	3	0	4	1	4	3	6		
Unique Patients given EIM	5	7	2	9	8	9	3	0	3	1	3	3	4		
Percent of Patients Restrained	0.9%	0.6%	0.3%	0.0%	0.0%	0.0%	0.0%	0.6%	0.7%	0.0%	0.3%	0.0%	0.3%	3.6%	Figure 17
Percent of Patients Secluded	0.6%	1.2%	0.6%	0.9%	1.0%	0.6%	0.3%	0.3%	1.0%	0.3%	1.5%	0.6%	0.7%	2.6%	
Restraint Hours Rate	0.01	0.05	0.00	0.00	0.00	0.00	0.00	0.01	0.01	0.00	0.01	0.00	0.01	0.42	Figure 18
Seclusion Hours Rate	0.02	0.03	0.01	0.02	0.05	0.01	0.00	0.01	0.03	0.00	0.03	0.00	0.02	0.55	

\* National Public Rate, NASMHPD Research Institute

\*\* Percentage of patients returning within 30 days of discharges that occurred during month

\*\*\* Injury is broadly defined to include any type of injuries regardless of the cause or severity level. The total number of patients or staff injured represents all of the reported injuries including minor injuries treated with first aid alone. However, the patient injury rate considers only the number of patient injuries that required beyond first-aid level treatment based on the NRI definition and the patient injury rate is the number of 'major' patient injuries per every 1000 inpatient days. The patient major injury data became available in January 2011.

## Performance Related Information for Staff &amp; Managers

## 3. Unusual Incident &amp; Medication

Data Source: UI DB, ADR DB, and Avatar

Updated as of 11/14/11

Category	Nov-10	Dec-10	Jan-11	Feb-11	Mar-11	Apr-11	May-11	Jun-11	Jul-11	Aug-11	Sep-11	Oct-11	Monthly Average	Total (12mths)	NPR* (Dec-09)
Total Unusual Incidents**	236	194	218	217	222	206	217	200	187	250	222	220	216	2589	
Total Major Unusual Incidents	183	130	148	147	150	127	132	134	117	169	165	166	147	1768	
Patient Involved UI Only**	210	178	199	209	199	192	202	190	180	232	203	203	200	2397	
<i>Patient UI Rate</i>	<i>23.87</i>	<i>19.82</i>	<i>22.04</i>	<i>26.37</i>	<i>23.96</i>	<i>23.37</i>	<i>23.49</i>	<i>23.60</i>	<i>22.48</i>	<i>27.60</i>	<i>23.99</i>	<i>23.67</i>	<i>23.65</i>		
Unique Patients Involved in UI**	110	113	106	128	115	116	121	122	120	120	118	116	117	1405	
Selected Types of Incidents															
Physical Assault	45	38	44	63	50	46	33	49	34	60	51	66	48	579	
Psych Emergency	49	24	16	32	13	14	16	20	20	24	39	44	26	311	
Fall	20	22	24	21	24	20	15	24	15	24	26	13	21	248	
Injury	46	29	33	43	39	27	23	25	24	38	31	44	34	402	
Physical Assaults by Severity															
High	12	10	11	21	11	9	8	12	12	8	13	24	12		
Medium	20	16	17	24	17	13	11	12	9	18	13	21	14		
Low	14	12	16	18	22	24	14	25	13	34	24	21	22		
Total Patients Injured***	24	18	18	41	23	15	15	17	16	21	19	38	22	265	
Patients with Major Injuries***			0	6	5	0	2	2	2	1	2	3	2	23	
<i>Patient Injury Rate***</i>			<i>0.00</i>	<i>0.76</i>	<i>0.60</i>	<i>0.00</i>	<i>0.23</i>	<i>0.25</i>	<i>0.25</i>	<i>0.12</i>	<i>0.24</i>	<i>0.35</i>	<i>0.27</i>		<i>0.39</i>
Total Staff Injured**	9	12	22	18	16	10	9	11	8	20	21	10	14		
Total UL Incident Reports	6	1	4	3	4	3	7	4	5	3	4	4	4	48	
Total ULs Documented in Avatar	2	1	2	4	3	2	1	7	5	4	3	1	3		
<i>Elopement Rate</i>	<i>0.23</i>	<i>0.11</i>	<i>0.22</i>	<i>0.50</i>	<i>0.36</i>	<i>0.24</i>	<i>0.12</i>	<i>0.87</i>	<i>0.62</i>	<i>0.48</i>	<i>0.35</i>	<i>0.12</i>	<i>0.47</i>		<i>0.13</i>
Total Medication Variance (MV) Incidents Reported **	8	21	3	20	8	20	14	19	16	13	11	12	14	165	
<i>MV Rate</i>	<i>0.91</i>	<i>2.34</i>	<i>0.33</i>	<i>2.52</i>	<i>0.96</i>	<i>2.43</i>	<i>1.63</i>	<i>2.36</i>	<i>2.00</i>	<i>1.55</i>	<i>1.30</i>	<i>1.40</i>	<i>1.63</i>		
Total Adverse Drug Reactions (ADR) Reported	6	7	10	5	11	6	10	2	5	9	8	3	7	82	
<i>ADR Rate</i>	<i>0.68</i>	<i>0.78</i>	<i>1.11</i>	<i>0.63</i>	<i>1.32</i>	<i>0.73</i>	<i>1.16</i>	<i>0.25</i>	<i>0.62</i>	<i>1.07</i>	<i>0.95</i>	<i>0.35</i>	<i>0.81</i>		
Total Routine Medication Administrations Scheduled	104863	107095	105329	93288	99376	97031	101053		96167	96945	95639	103346		1100132	
Total Missing Documentations	490	309	365	413	540	507	361		383	349	231	246		4194	
<i>Percent of Missing Documentation</i>	<i>0.47%</i>	<i>0.29%</i>	<i>0.35%</i>	<i>0.44%</i>	<i>0.54%</i>	<i>0.52%</i>	<i>0.36%</i>		<i>0.40%</i>	<i>0.36%</i>	<i>0.24%</i>	<i>0.24%</i>		<i>0.38%</i>	
Total Patients with >=3 STATs	29	25	44	53	33	53	30	18	17	20	24	6	29		
Total STAT Orders												40	40		
Emergency STAT Med Orders Administered Involuntarily (EIM)	18	12	13	24	26	18	7	0	7	2	9	7	12		
Unique EIM Events	10	8	4	12	13	9	3	0	4	1	4	3	6		
Unique Patients given EIM	5	7	2	9	8	9	3	0	3	1	3	3	4		

\* National Public Rate, NASMHPD Research Institute

\*\* Numbers may change if any additional UI report is made after the data run date from UI database (around the 15th of the following month).

\*\*\* Avatar report that indicates the number of patients with 3 or more STATs was unavailable at report run time

## Performance Related Information for Staff &amp; Managers

## 4. Restraint &amp; Seclusion

Data Source: Restraint/Seclusion Log and UI DB (for # of total events and patients) and Avatar (for patient days/hours)

Updated as of 11/14/11

Category	Nov-10	Dec-10	Jan-11	Feb-11	Mar-11	Apr-11	May-11	Jun-11	Jul-11	Aug-11	Sep-11	Oct-11	Monthly Average	Total (12mths)	NPR* (Dec-09)
Number of Restraint Events	4	8	1	0	0	0	0	2	2	0	1	0	1.5	18	
Number of Unique Patients Restrained	3	2	1	0	0	0	0	2	2	0	1	0	0.9		
Percentage of Patients Restrained	0.9%	0.6%	0.3%	0.0%	0.0%	0.0%	0.0%	0.6%	0.7%	0.0%	0.3%	0.0%	0.3%		3.6%
Total Restraint Hours (h:mm)	2:46	11:08	0:20	0:00	0:00	0:00	0:00	2:50	1:45	0:00	2:00	0:00	1:44	20:49	
Restraint Hours Rate	0.01	0.05	0.00	0.00	0.00	0.00	0.00	0.01	0.01	0.00	0.01	0.00	0.01		0.42
Number of Seclusion Events	2	5	3	3	5	2	1	1	3	1	6	2	2.8	34	
Number of Unique Patients Secluded	2	4	2	3	3	2	1	1	3	1	5	2	2.4		
Percentage of Patients Secluded	0.6%	1.2%	0.6%	0.9%	1.0%	0.6%	0.3%	0.3%	1.0%	0.3%	1.5%	0.6%	0.7%		2.6%
Total Seclusion Hours (h:mm)	4:57	6:40	2:10	3:25	9:15	2:00	1:00	1:11	5:10	1:00	5:37	0:35	3:35	43:00	
Seclusion Hours Rate	0.02	0.03	0.01	0.02	0.05	0.01	0.00	0.01	0.03	0.00	0.03	0.00	0.02		0.55

\* National Public Rate, NASMHPD Research Institute

## Performance Related Information for Staff &amp; Managers

## 5. Major Incidents by Incident Location/Unit

Data Source: UI DB

Updated as of 11/14/11

Category		Nov-10	Dec-10	Jan-11	Feb-11	Mar-11	Apr-11	May-11	Jun-11	Jul-11	Aug-11	Sep-11	Oct-11	Monthly Average	Total (11mths)	Percent	
<b>Total Unusual Incidents</b>		<b>236</b>	<b>194</b>	<b>218</b>	<b>217</b>	<b>222</b>	<b>206</b>	<b>217</b>	<b>200</b>	<b>187</b>	<b>250</b>	<b>222</b>	<b>220</b>	<b>216</b>	<b>2589</b>		
<b>Total Major Incidents*</b>		<b>183</b>	<b>130</b>	<b>148</b>	<b>147</b>	<b>150</b>	<b>127</b>	<b>132</b>	<b>134</b>	<b>117</b>	<b>169</b>	<b>165</b>	<b>166</b>	<b>147</b>	<b>1768</b>	<b>100%</b>	
Major Incident Location	1A	12	10	11	5	11	13	16	7	9	18	16	13	12	141	8%	
	1B	12	6	7	9	12	8	25	16	18	19	24	15	14	171	10%	
	1C	5	14	9	16	9	9	3	11	4	10	8	7	9	105	6%	
	1D	43	32	12	11	15	14	10	11	5	4	14	29	17	200	11%	
	1E	11	9	16	32	21	21	24	15	20	22	28	27	21	246	14%	
	1F	13	12	15	20	9	8	11	10	9	3	19	14	12	143	8%	
	1G	13	9	11	8	12	14	4	6	10	22	15	24	12	148	8%	
	2A	4	4	6	3	4	2	2	3	0	5	3	2	3	38	2%	
	2B	6	2	3	0	0	3	2	0	2	1	2	3	2	24	1%	
	2C	12	11	15	13	19	7	11	11	6	8	2	8	10	123	7%	
	2D	22	5	10	12	7	7	6	11	11	21	9	2	10	123	7%	
	ANXA/B	4	0	5	0	-	-	-	-	-	-	-	-	-	2	9	1%
	TLC	10	3	12	10	17	11	7	19	12	16	10	9	11	136	8%	
	Other	16	13	16	8	14	10	11	14	11	20	15	13	13	161	9%	
<b>Total Physical Assault Incidents</b>		<b>45</b>	<b>38</b>	<b>44</b>	<b>63</b>	<b>50</b>	<b>46</b>	<b>33</b>	<b>49</b>	<b>34</b>	<b>60</b>	<b>51</b>	<b>66</b>	<b>48</b>	<b>579</b>	<b>100%</b>	
Assault Incident Location	1A	5	2	4	1	1	3	3	1	4	5	6	4	3	39	7%	
	1B	0	0	0	1	2	1	3	2	3	6	0	2	2	20	3%	
	1C	2	6	4	4	2	3	0	6	1	2	2	2	3	34	6%	
	1D	9	7	6	6	11	8	5	6	2	0	5	16	7	81	14%	
	1E	4	2	4	17	8	13	8	5	9	10	11	9	8	100	17%	
	1F	4	4	6	13	3	3	4	4	1	2	6	6	5	56	10%	
	1G	6	4	6	8	7	5	0	3	4	8	9	17	6	77	13%	
	2A	1	2	0	0	1	0	1	0	0	0	0	0	0	5	1%	
	2B	2	1	0	0	0	0	1	0	1	0	1	0	1	6	1%	
	2C	0	3	5	3	3	0	3	8	1	4	1	3	3	34	6%	
	2D	10	4	5	5	4	3	1	4	4	6	10	4	1	57	10%	
	ANXA/B	1	0	0	0	-	-	-	-	-	-	-	-	-	0	1	0%
	TLC	1	3	3	3	7	5	4	5	5	2	9	3	5	4	50	9%
	Other	0	0	1	2	1	2	0	5	0	4	3	1	2	19	3%	

## Performance Related Information for Staff &amp; Managers

## 5. Major Incidents by Incident Location/Unit

Data Source: UI DB

Updated as of 11/14/11

Category	Nov-10	Dec-10	Jan-11	Feb-11	Mar-11	Apr-11	May-11	Jun-11	Jul-11	Aug-11	Sep-11	Oct-11	Monthly Average	Total (11mths)	Percent
<b>Total Fall Incidents</b>	<b>20</b>	<b>22</b>	<b>24</b>	<b>21</b>	<b>24</b>	<b>20</b>	<b>15</b>	<b>24</b>	<b>15</b>	<b>24</b>	<b>26</b>	<b>13</b>	<b>21</b>	<b>248</b>	<b>100%</b>
Fall Incident Location															
1A	5	3	5	2	7	5	1	5	5	4	5	4	4	51	21%
1B	3	2	3	2	1	2	1	3	5	4	13	3	4	42	17%
1C	1	5	0	2	2	1	1	0	0	3	0	1	1	16	6%
1D	0	3	1	1	0	2	2	2	2	0	1	0	1	14	6%
1E	0	1	3	3	0	0	3	0	0	2	1	0	1	13	5%
1F	1	0	0	0	1	0	1	0	0	0	2	1	1	6	2%
1G	0	1	1	0	2	0	0	0	0	0	1	1	1	6	2%
2A	0	1	1	1	1	1	0	0	0	1	0	0	1	6	2%
2B	0	0	0	0	0	1	0	0	0	1	0	0	0	2	1%
2C	4	2	2	4	3	2	2	1	0	0	0	0	2	20	8%
2D	4	0	1	1	0	2	0	2	1	5	1	1	2	18	7%
ANXA/B	0	0	0	0	-	-	-	-	-	-	-	-	0	0	0%
TLC	1	0	3	4	4	3	2	9	2	3	0	1	3	32	13%
Other	1	4	4	1	3	1	2	2	0	1	2	1	2	22	9%
<b>Total Injury Incidents</b>	<b>46</b>	<b>29</b>	<b>33</b>	<b>43</b>	<b>39</b>	<b>27</b>	<b>23</b>	<b>25</b>	<b>24</b>	<b>38</b>	<b>31</b>	<b>44</b>	<b>34</b>	<b>402</b>	<b>100%</b>
Injury Incident Location															
1A	5	2	2	0	3	3	2	1	4	6	1	3	3	32	8%
1B	2	0	2	3	4	2	6	1	3	2	4	2	3	31	8%
1C	2	3	2	1	1	2	1	1	1	3	0	2	2	19	5%
1D	14	8	2	2	6	3	2	4	2	0	3	8	5	54	13%
1E	2	2	2	8	3	2	5	3	2	6	6	9	4	50	12%
1F	6	3	3	10	3	1	3	3	1	0	4	3	3	40	10%
1G	4	2	3	4	5	4	0	0	0	5	3	9	3	39	10%
2A	0	3	1	0	1	0	0	0	0	0	0	1	1	6	1%
2B	2	0	1	0	0	0	0	0	1	1	0	0	0	5	1%
2C	1	0	3	3	6	1	0	1	3	4	1	2	2	25	6%
2D	4	2	1	6	1	2	1	2	2	2	4	0	2	27	7%
ANXA/B	0	0	0	0	-	-	-	-	-	-	-	-	0	0	0%
TLC	0	2	3	3	5	6	1	5	4	2	1	4	3	36	9%
Other	4	2	8	3	1	1	2	4	1	7	4	1	3	38	9%

\* Not every incident is a major incident. This counts only those major incidents that required extensive investigations from the risk manager.

- Annex A/B Closed in February 2011. All patients were transferred to other units.

## Performance Related Information for Staff &amp; Managers

## 6. Demographic Information of Individuals in Care

Data Source: Avatar

Updated as of 11/14/11

Category	Sub-group	Nov-10	Dec-10	Jan-11	Feb-11	Mar-11	Apr-11	May-11	Jun-11	Jul-11	Aug-11	Sep-11	Oct	Monthly Average	Percent*
<b>Total Active (on Roll) at End of Month*</b>		<b>303</b>	<b>301</b>	<b>299</b>	<b>276</b>	<b>279</b>	<b>288</b>	<b>287</b>	<b>271</b>	<b>274</b>	<b>286</b>	<b>291</b>	<b>286</b>	<b>287</b>	
<b>Gender</b>	Female	75	74	71	66	67	69	72	59	58	68	70	65	<b>68</b>	<b>23.7%</b>
	Male	228	227	228	210	212	219	215	212	216	218	221	221	<b>219</b>	<b>76.3%</b>
<b>Age</b>	<b>Median Age (Years)</b>	<b>55 yrs</b>	<b>55 yrs</b>	<b>54 yrs</b>	<b>55 yrs</b>	<b>55 yrs</b>	<b>55 yrs</b>	<b>55 yrs</b>	<b>55 yrs</b>	<b>55 yrs</b>	<b>54 yrs</b>	<b>55 yrs</b>	<b>55 yrs</b>	<b>55 yrs</b>	
	<30 years old	14	15	14	16	15	19	20	18	18	18	24	24	<b>18</b>	<b>6.2%</b>
	>=30 and <40 years old	24	30	31	23	27	29	30	23	24	27	21	21	<b>26</b>	<b>9.0%</b>
	>=40 and <50 years old	62	56	58	47	49	47	47	45	48	53	53	54	<b>52</b>	<b>18.0%</b>
	>=50 and <60 years old	119	118	114	114	108	113	111	107	105	108	107	106	<b>111</b>	<b>38.7%</b>
	>=60 years old	84	82	82	76	80	80	79	78	79	80	86	81	<b>81</b>	<b>28.1%</b>
<b>Legal Status of Individuals on Roll at End of Month</b>	Emergency		26	19	19	21	22	15	14	18	20	16	17	<b>19</b>	<b>6.6%</b>
	Inpatient Commitment		33	35	32	31	30	30	33	32	32	31	32	<b>32</b>	<b>11.1%</b>
	Outpatient Commitment		30	32	29	29	28	30	26	25	26	28	22	<b>28</b>	<b>9.7%</b>
	Voluntary		46	43	41	40	41	41	40	41	38	41	40	<b>41</b>	<b>14.3%</b>
	Non-Protesting		1	1	1	1	1	1	1	1	1	0	0	<b>1</b>	<b>0.3%</b>
	<b>Civil Sub-total</b>		<b>136</b>	<b>130</b>	<b>122</b>	<b>122</b>	<b>122</b>	<b>117</b>	<b>114</b>	<b>117</b>	<b>117</b>	<b>116</b>	<b>111</b>	<b>120</b>	<b>42.0%</b>
	DC Exam		51	55	42	41	49	51	38	44	54	61	61	<b>50</b>	<b>17.3%</b>
	Mentally Incompetent		3	3	2	2	4	4	3	3	4	3	3	<b>3</b>	<b>1.1%</b>
	NGBRI - DC		94	94	93	98	96	96	98	93	95	94	95	<b>95</b>	<b>33.2%</b>
	NGBRI - US		10	10	10	9	10	12	12	12	11	12	11	<b>11</b>	<b>3.8%</b>
NGBIR - VI		2	2	2	2	2	2	2	1	1	1	1	<b>2</b>	<b>0.6%</b>	
Dual Commitment		1	1	1	1	1	1	1	1	1	1	1	<b>1</b>	<b>0.3%</b>	
Sexual Psychopath (Miller Act)		4	4	4	4	4	4	4	3	3	3	3	<b>4</b>	<b>1.2%</b>	
<b>Forensic Sub-total</b>		<b>165</b>	<b>169</b>	<b>154</b>	<b>157</b>	<b>166</b>	<b>170</b>	<b>157</b>	<b>157</b>	<b>169</b>	<b>175</b>	<b>175</b>	<b>165</b>	<b>57.5%</b>	
<b>Length of Stay</b>	<b>Median LOS (Days)</b>		<b>903 d</b>	<b>934 d</b>	<b>1091 d</b>	<b>994 d</b>	<b>923 d</b>	<b>949 d</b>	<b>1073 d</b>	<b>1043 d</b>	<b>856 d</b>	<b>835 d</b>	<b>875 d</b>	<b>952 d</b>	
	<b>Average LOS (Days)</b>		<b>3099 d</b>	<b>3133 d</b>	<b>3282 d</b>	<b>3192 d</b>	<b>3069 d</b>	<b>3093 d</b>	<b>3261 d</b>	<b>3194 d</b>	<b>3033 d</b>	<b>2968 d</b>	<b>2988 d</b>	<b>3119 d</b>	
	<30 Days		27	32	30	33	34	30	22	33	39	40	31	<b>32</b>	<b>11.1%</b>
	>=30 ~ <365 Days		79	74	60	62	68	72	69	61	68	72	78	<b>69</b>	<b>24.2%</b>
	>= 1 Year & < 2 Years		30	29	27	28	32	29	25	27	25	24	22	<b>27</b>	<b>9.4%</b>
	>= 2 Years & < 5 Years		48	47	45	44	40	43	43	43	45	46	46	<b>45</b>	<b>15.5%</b>
	>= 5 Years & < 20 Years		66	66	63	64	67	65	64	63	62	61	61	<b>64</b>	<b>22.3%</b>
>= 20 Years		51	51	51	48	47	48	48	47	47	48	48	<b>49</b>	<b>16.9%</b>	

\* Counts the total number of individuals who are on the hospital roll at end of each month. This number serves as denominator to calculate percentage of each group.