

**Government of the District of Columbia
Department of Mental Health (DMH)**



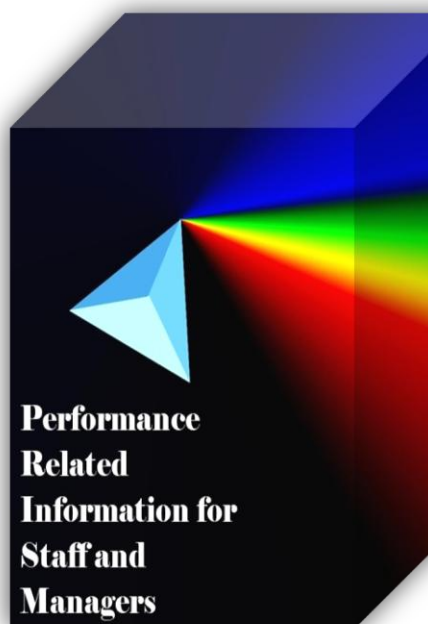
Performance Related Information for Staff and Managers

PRISM

JUNE 2011

Table of Contents

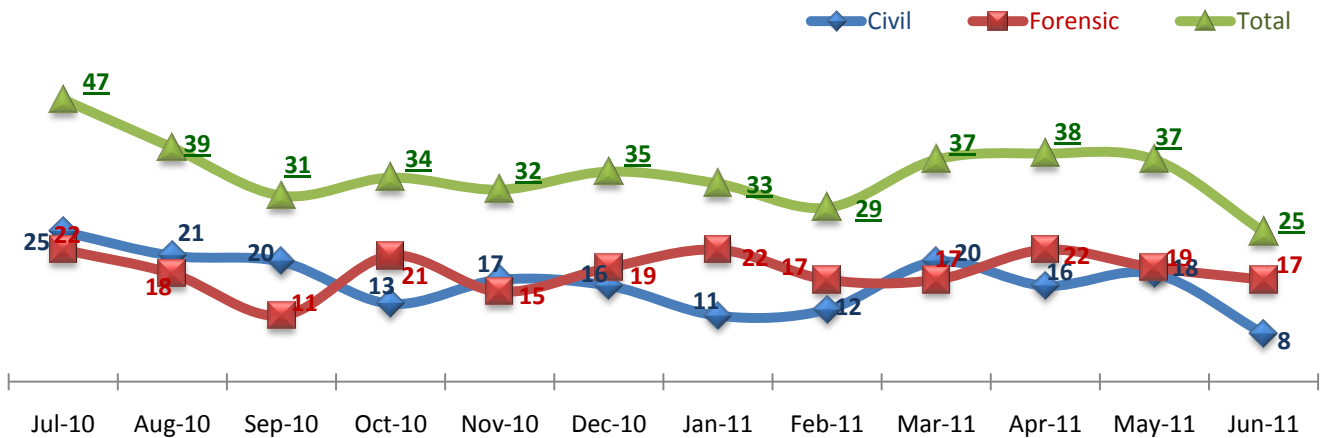
1.	Admissions to SEH	1
2.	Discharges from SEH.....	1
3.	Average Daily Census	1
4.	Transfers	2
5.	30-Day Readmission Rate	2
6.	Unusual Incidents.....	2
7.	Patient-Involved Unusual Incidents.....	3
8.	Eloperments	3
9.	Selected Types of Incidents	3
10.	Patient Injuries	4
11.	Staff Injuries.....	4
12.	Reported Medication Variances	4
13.	Reported Adverse Drug Reactions	5
14.	Percent of Missing Documentation on Med-Administration.....	5
15.	Emergency Involuntary Medications Documented in eMar	5
16.	Percent of Patients Restrained or Secluded.....	6
17.	Restraint Hours Rate & Seclusion Hours Rate	6
	<input type="checkbox"/> Appendix 1) Table – Census, Admissions & Discharges	
	<input type="checkbox"/> Appendix 2) Table – Key Performance Indicators	
	<input type="checkbox"/> Appendix 3) Table – Unusual Incident & Medication	
	<input type="checkbox"/> Appendix 4) Table – Restraint & Seclusion	
	<input type="checkbox"/> Appendix 5) Table – Major Incidents by Incident Location/Unit	
	<input type="checkbox"/> Appendix 6) Table – Demographic Information of Individuals in Care	



07/15/2011

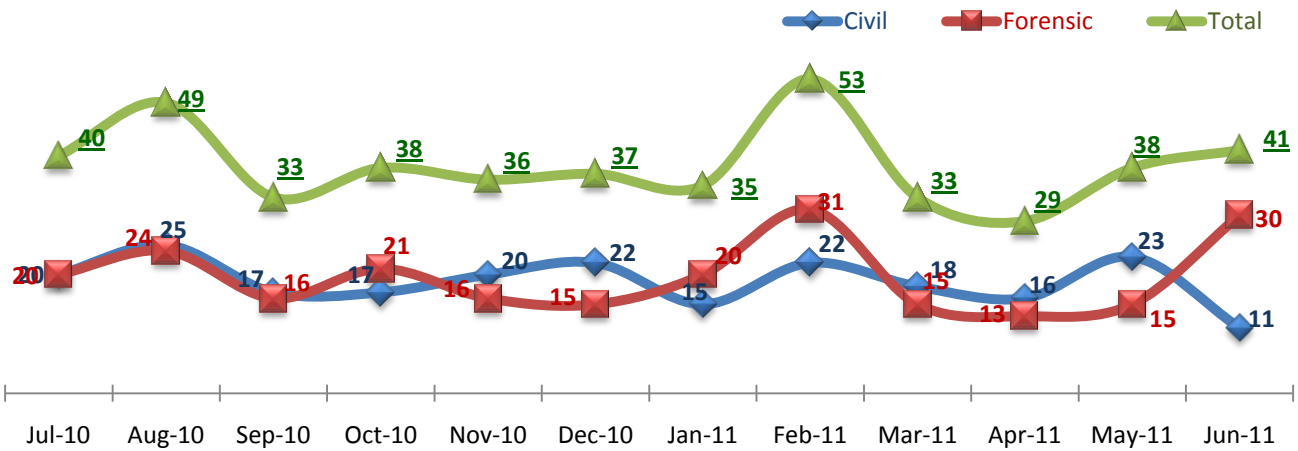
Office of Statistics and Reporting (OSR)

1. Admissions to SEH



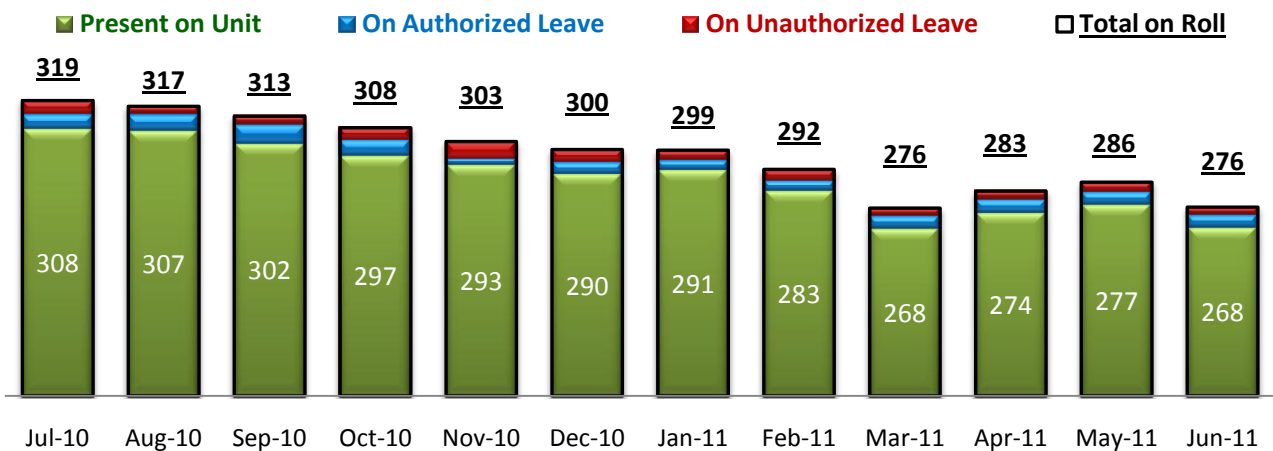
* Number of admissions to SEH inpatient program, including transfers from outpatient to inpatient program.

2. Discharges from SEH



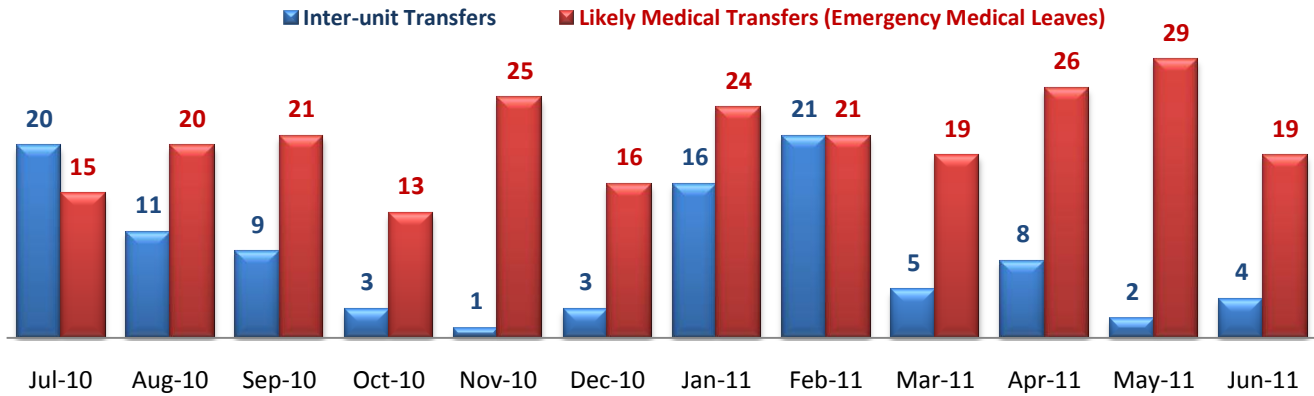
* Number of discharges from SEH inpatient program, including transfers from inpatient to outpatient program.

3. Average Daily Census



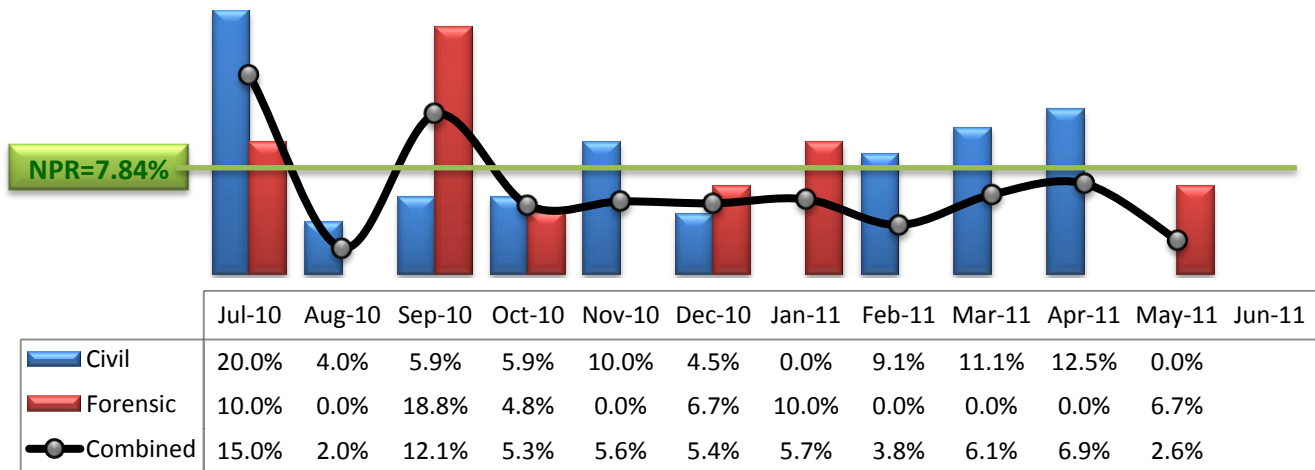
* Data above is the daily average number of individuals counted at 11:59 PM every day during each month.

4. Transfers



* Number of inter-unit transfers that occurred during month and number of emergency medical leaves that were initiated during month.

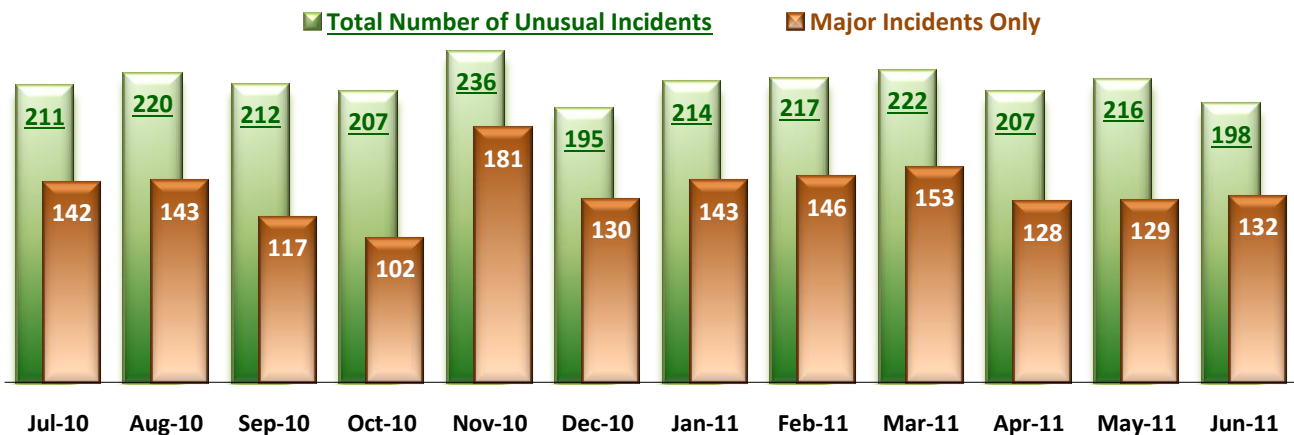
5. 30-Day Readmission Rate



* Percent of discharges that returned to SEH within 30 days of discharges. It does not include those who may have been re-hospitalized to another psychiatric facility. This measure requires 30-day observation following discharge.

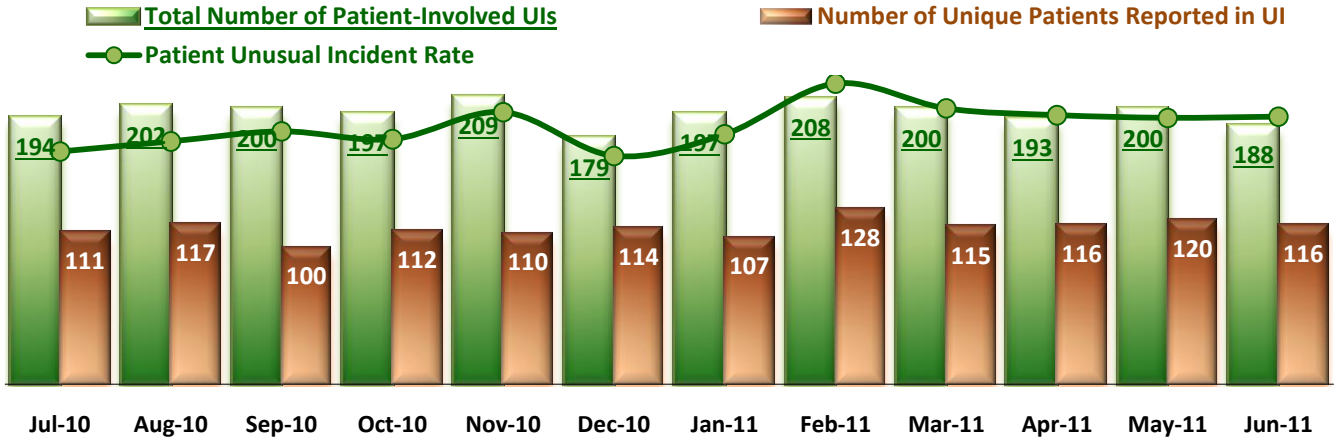
** NPR: National Public Rate as of December 2009 published by NASMHPD Research Institute in May 2010.

6. Unusual Incidents



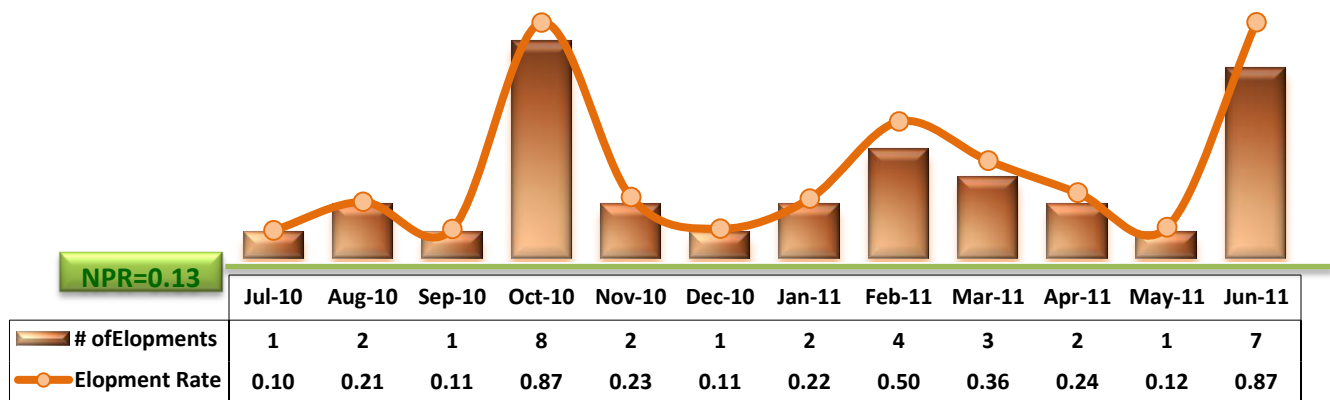
* Numbers above represent all types of the unusual incidents (UIs) that were reported to the Risk Manager by PRISM publication date, including those that did not involve any patients.

7. Patient-Involved Unusual Incidents



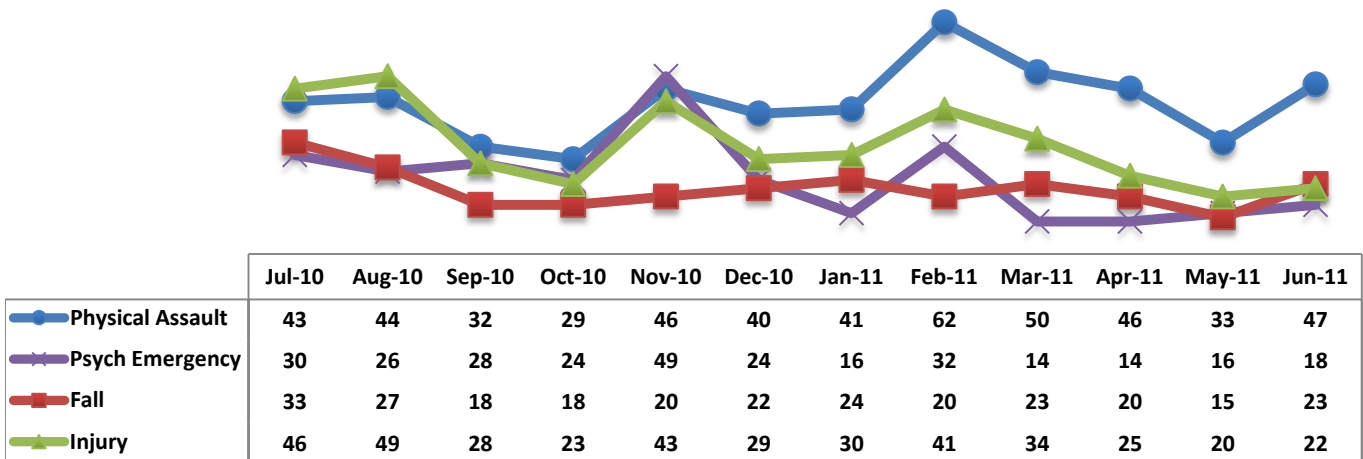
*The total number of patient-involved UIs counts only those incidents that involved at least one or more patients. Some patients may be involved in more than one incident and the number of unique patients does not double count them. The patient UI rate is the number of patient-involved unusual incidents reported for every 1000 inpatient days.

8. Elopements



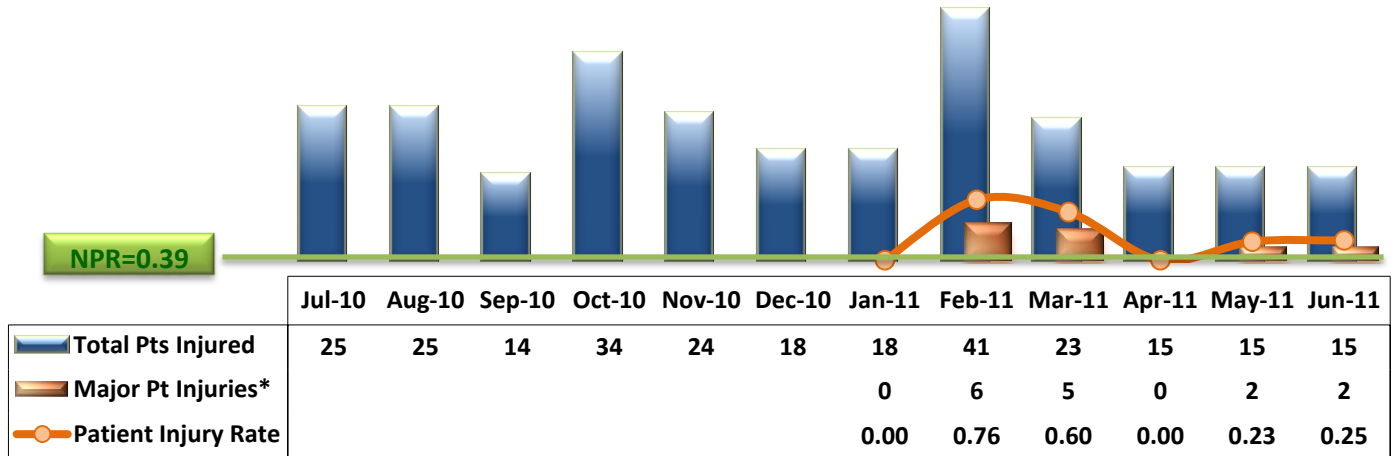
* It counts the total number of unauthorized leaves for any duration that were initiated during month and were recorded in Avatar. The elopement rate is the number of those unauthorized leaves that occurred for every 1000 inpatient days.

9. Selected Types of Incidents



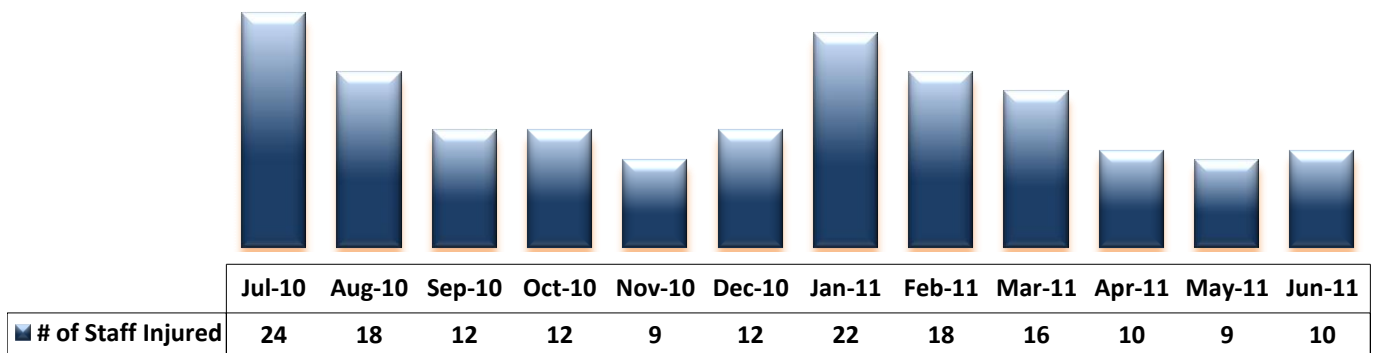
* These are incident types that are frequently reported. Some incidents may be counted in multiple categories. For example, a physical assault incident that accompanied psychiatric emergency and injury is counted under psychiatric emergency and injury as well as under physical assault. Injury is broadly defined to include any type of injuries regardless of the cause or severity level.

10. Patient Injuries



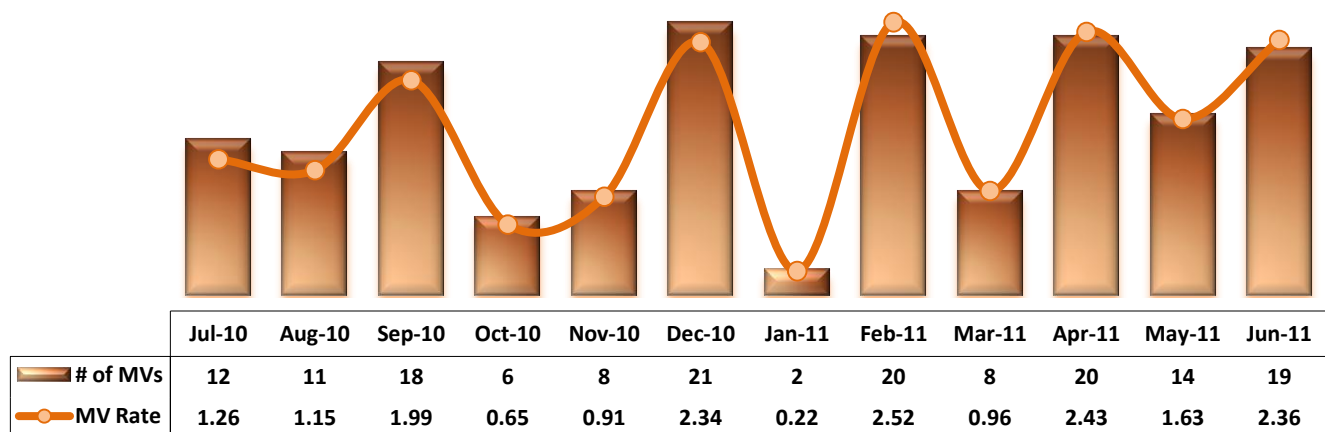
* Injury is broadly defined to include any type of injuries regardless of the cause or severity level. The total number of patients injured represents all of the reported injuries including minor injuries treated with first aid alone. However, the patient injury rate considers only the number of patient injuries that required beyond first-aid level treatment based on the NRI definition and the patient injury rate is the number of 'major' patient injuries per every 1000 inpatient days. The major patient injury data became available in January 2011.

11. Staff Injuries



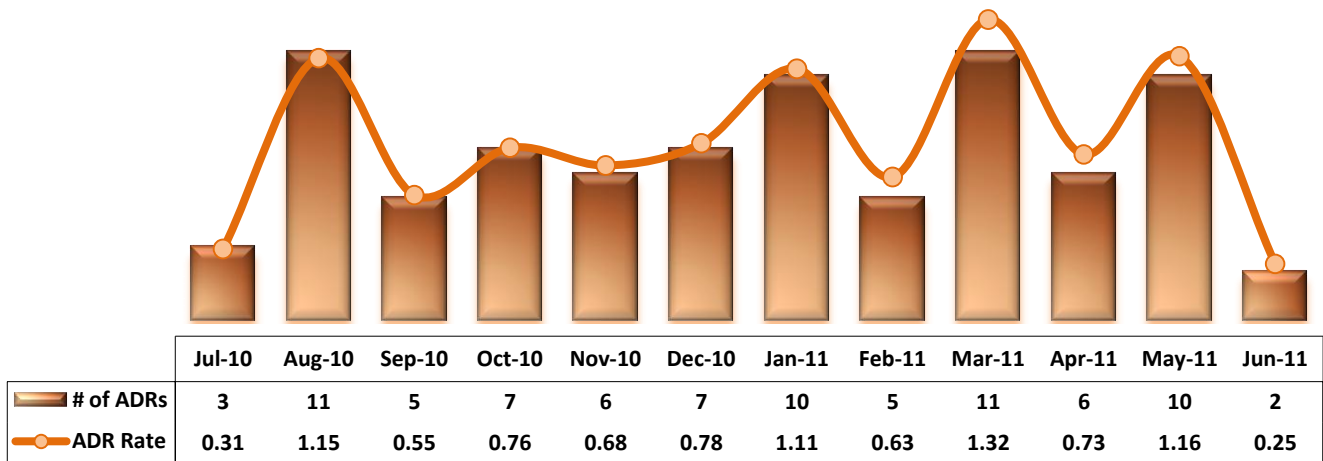
* Injury is broadly defined to include any type of injuries regardless of the cause or severity level. The total number of staff injured represents all of the reported staff injuries including minor injuries treated with first aid alone.

12. Reported Medication Variances



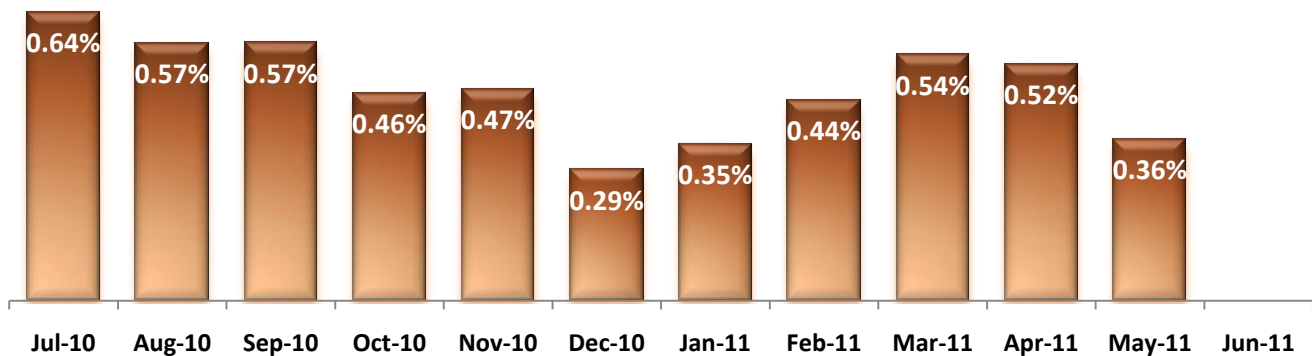
* MV Rate: Number of reported medication variance events that occurred for every 1000 inpatient days.

13. Reported Adverse Drug Reactions



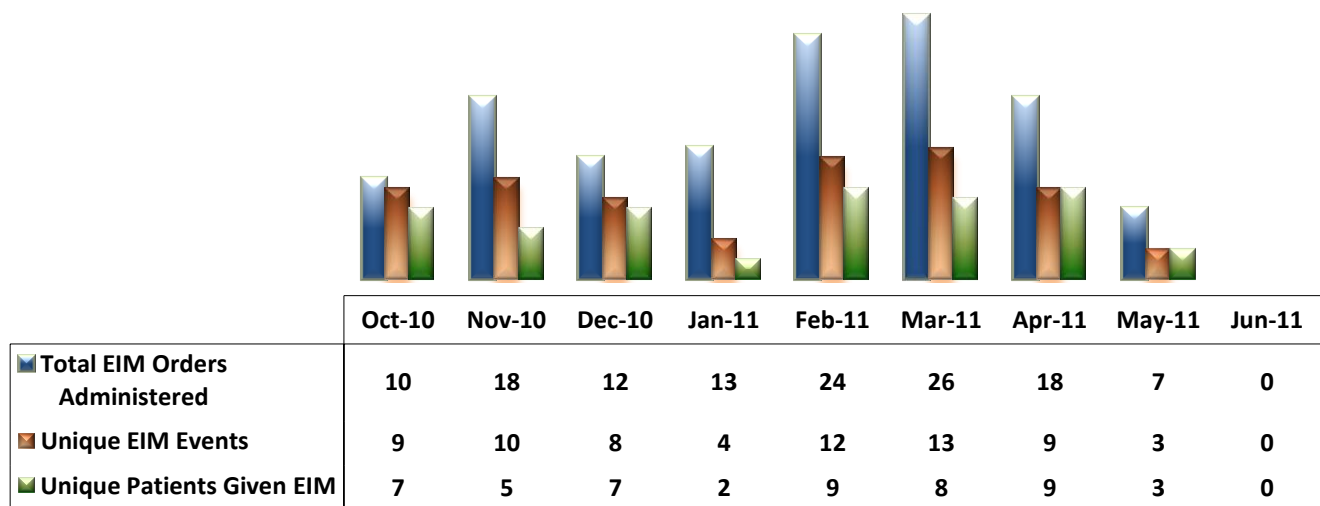
* ADR Rate: Number of reported adverse drug reaction events that occurred for every 1000 inpatient days.

14. Percent of Missing Documentation on Med-Administration



* June-2011 data is not available because of data tracking interruption caused by a technical glitch in Avatar early June.

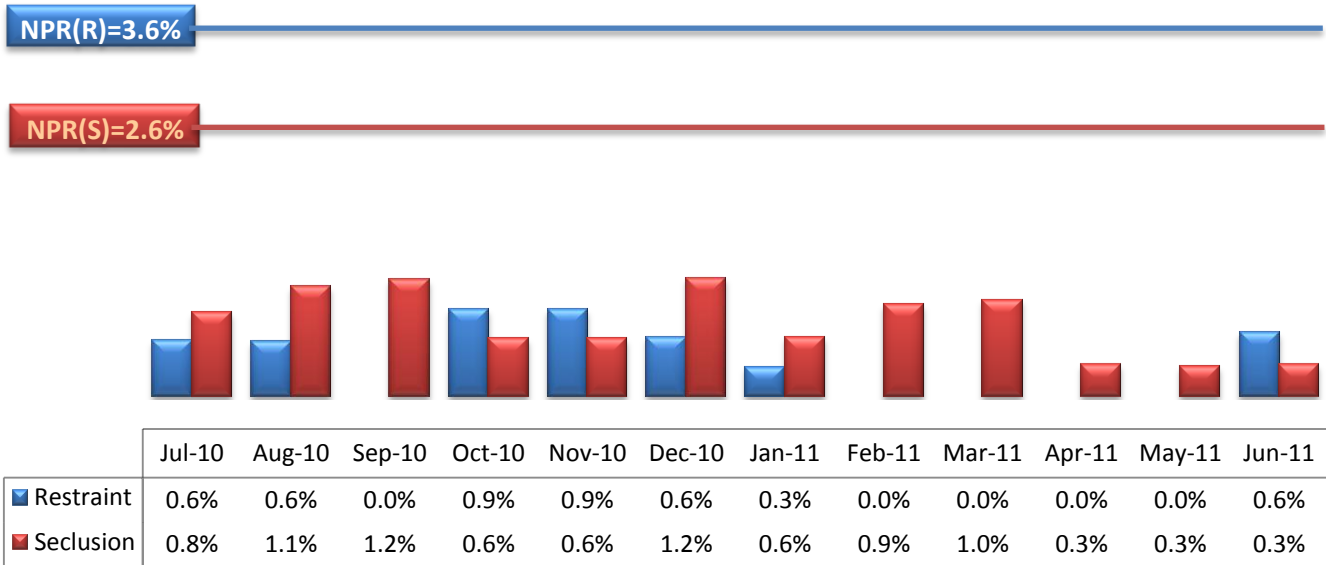
15. Emergency Involuntary Medications Documented in eMar



* Some patients may have experienced multiple EIM events during month and some events may have involved multiples doses of medication ordered and administered.

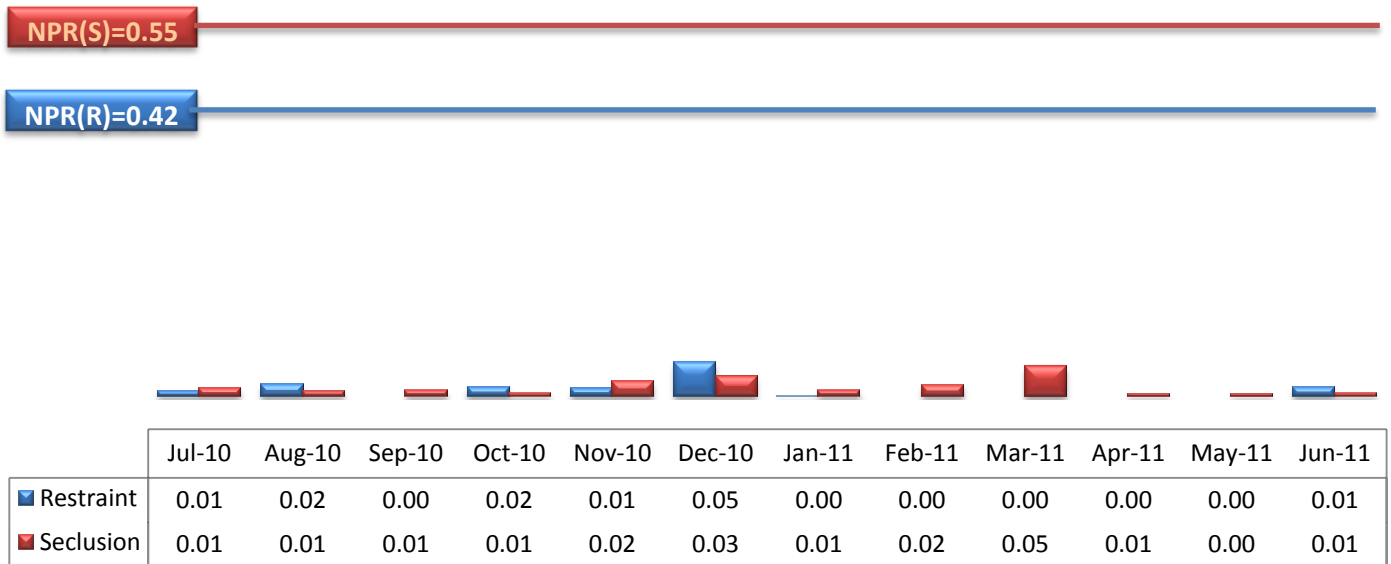
** Unusual incident DB suggests that two EIM events occurred in June 2011 while Avatar eMar recorded none.

16. Percent of Patients Restrained or Secluded



* Percent of unique patients who were restrained at least once and percent of unique patients who were secluded at least once.

17. Restraint Hours Rate & Seclusion Hours Rate



* Restraint/Seclusion Hours Rate: Number of hours spent in restraint/seclusion for every 1000 inpatient hours.

Performance Related Information for Staff & Managers

1. Census, Admissions, Discharges & Transfers

Data Source: Avatar

Updated as of 07/13/11

Category	Program	Jul-10	Aug-10	Sep-10	Oct-10	Nov-10	Dec-10	Jan-11	Feb-11	Mar-11	Apr-11	May-11	Jun-11	Monthly Average	Total (12mths)	Figure
Admissions	Civil	25	21	20	13	17	16	11	12	20	16	18	8	16	197	Figure 1
	Forensic	22	18	11	21	15	19	22	17	17	22	19	17	18	220	
	Total	47	39	31	34	32	35	33	29	37	38	37	25	35	417	
Discharges	Civil	20	25	17	17	20	22	15	22	18	16	23	11	19	226	Figure 2
	Forensic	20	24	16	21	16	15	20	31	15	13	15	30	20	236	
	Total	40	49	33	38	36	37	35	53	33	29	38	41	39	462	
Net Gain During Month	Civil	5	-4	3	-4	-3	-6	-4	-10	2	0	-5	-3		-29	
	Forensic	2	-6	-5	0	-1	4	2	-14	2	9	4	-13		-16	
	Total	7	-10	-2	-4	-4	-2	-2	-24	4	9	-1	-16		-45	
All Individuals on Roll at End of Month		323	313	311	307	303	301	299	275	279	288	287	271	296		
a. Present on Unit		312	304	303	295	292	289	290	268	275	280	277	261	287		
b. On AL		6	6	5	7	6	7	6	3	1	5	6	5	5		
c. On UL		5	3	3	5	5	5	3	4	3	3	4	5	4		
All Individuals on Roll: Daily Average during Month		319	317	313	308	303	300	299	292	276	283	286	276	298		Figure 3
a. Present on Unit*		308	307	302	297	293	290	291	283	268	274	277	268	288		
b. On AL		6	6	8	6	3	5	4	4	5	6	5	5	5		
c. On UL		5	3	3	5	7	5	4	4	3	3	4	3	4		
Patient Days*		9553	9532	9063	9213	8799	8983	9031	7925	8307	8217	8601	8050	8773	105274	
Inter-Unit Transfers during Month		20	11	9	3	1	3	16	21	5	8	2	4	9	103	Figure 4
Medical Leaves Initiated during Month	Emergency	15	20	21	13	25	16	24	21	19	26	29	19	21	248	
	Non-Emer	10	13	9	12	20	23	26	21	21	35	15	5	18	210	
Total		25	33	30	25	45	39	50	42	40	61	44	24	38	458	
Non-Medical Leaves Initiated during Month		71	59	82	102	81	93	91	111	67	60	56	45	77	918	
UL Initiated during Month		1	2	1	8	2	1	2	4	3	2	1	7	3	34	
Total Unique Patients Served during Month		355	361	340	343	343	334	334	325	308	311	324	308	332		
30 Day Readmission **	Civil	4	1	1	1	2	1	0	2	2	2	0		1	16	
	Forensic	2	0	3	1	0	1	2	0	0	0	1		1	10	
	Total	6	1	4	2	2	2	2	2	2	2	1		2	26	

* Counts the number of patients who are present on the unit and excludes those on authorized or unauthorized leave at 11:59pm on a given day.

** Number of patients returning within 30 days of discharges that occurred during month.

Performance Related Information for Staff & Managers

2. Key Performance Indicators

Data Source: UI DB, ADR DB, Restraint/Seclusion Log, and Avatar

Updated as of 07/13/11

Category	Program	Jul-10	Aug-10	Sep-10	Oct-10	Nov-10	Dec-10	Jan-11	Feb-11	Mar-11	Apr-11	May-11	Jun-11	Monthly Average	NPR* (Dec-09)	Figure
30 Day Readmit (Discharge Cohort)**	Civil	20.0%	4.0%	5.9%	5.9%	10.0%	4.5%	0.0%	9.1%	11.1%	12.5%	0.0%		7.7%		Figure 5
	Forensic	10.0%	0.0%	18.8%	4.8%	0.0%	6.7%	10.0%	0.0%	0.0%	0.0%	6.7%		4.6%		
	Combined	15.0%	2.0%	12.1%	5.3%	5.6%	5.4%	5.7%	3.8%	6.1%	6.9%	2.6%		6.1%	7.8%	
Number of Unusual Incidents		211	220	212	207	236	195	214	217	222	207	216	198	213		Figure 6
Patient Unusual Incident Rate		20.31	21.19	22.07	21.38	23.75	19.93	21.81	26.25	24.08	23.49	23.25	23.35	22.48		Figure 7
Elopement Rate		0.10	0.21	0.11	0.87	0.23	0.11	0.22	0.50	0.36	0.24	0.12	0.87	0.44	0.13	Figure 8
Selected Types of Incidents	Physical Assault	43	44	32	29	46	40	41	62	50	46	33	47	43		Figure 9
	Psych Emergency	30	26	28	24	49	24	16	32	14	14	16	18	24		
	Fall	33	27	18	18	20	22	24	20	23	20	15	23	22		
	Injury***	46	49	28	23	43	29	30	41	34	25	20	22	33		
Patient Injury Rate***								0.00	0.76	0.60	0.00	0.23	0.25	0.28	0.39	Figure 10
Patients with Major Injuries***								0	6	5	0	2	2	3		
Total Patients Injured***		25	25	14	34	24	18	18	41	23	15	15	15	22		
Total Staff Injured***		24	18	12	12	9	12	22	18	16	10	9	10	14		Figure 11
Medication Variance Rate		1.26	1.15	1.99	0.65	0.91	2.34	0.22	2.52	0.96	2.43	1.63	2.36	1.51		Figure 12
Adverse Drug Reaction Rate		0.31	1.15	0.55	0.76	0.68	0.78	1.11	0.63	1.32	0.73	1.16	0.25	0.79		Figure 13
Percent of Missing Documentation of Medication Administration		0.64%	0.57%	0.57%	0.46%	0.47%	0.29%	0.35%	0.44%	0.54%	0.52%	0.36%		0.48%		Figure 14
Emergency STAT Med Orders Administered Involuntarily (EIM)						18	12	13	24	26	18	7	0	14		Figure 15
Unique EIM Events						10	8	4	12	13	9	3	0	8		
Unique Patients given EIM						5	7	2	9	8	9	3	0	6		
Percent of Patients Restrained		0.6%	0.6%	0.0%	0.9%	0.9%	0.6%	0.3%	0.0%	0.0%	0.0%	0.0%	0.6%	0.4%	3.6%	Figure 16
Percent of Patients Secluded		0.8%	1.1%	1.2%	0.6%	0.6%	1.2%	0.6%	0.9%	1.0%	0.3%	0.3%	0.3%	0.7%	2.6%	
Restraint Hours Rate		0.01	0.02	0.00	0.02	0.01	0.05	0.00	0.00	0.00	0.00	0.00	0.01	0.01	0.42	Figure 17
Seclusion Hours Rate		0.01	0.01	0.01	0.01	0.02	0.03	0.01	0.02	0.05	0.01	0.00	0.01	0.02	0.55	

* National Public Rate, NASMHPD Research Institute

** Percentage of patients returning within 30 days of discharges that occurred during month

Injury is broadly defined to include any type of injuries regardless of the cause or severity level. The total number of patients or staff injured represents all of the reported injuries including minor injuries treated with first aid alone. However, the patient injury rate considers only the number of patient injuries that required beyond first-aid level treatment based on the NRI definition and the patient injury rate is the number of 'major' patient injuries per every 1000 inpatient days. The patient major injury data became available in January 2011.

Performance Related Information for Staff & Managers

3. Unusual Incident & Medication

Data Source: UI DB, ADR DB, and Avatar

Updated as of 07/13/11

Category	Jul-10	Aug-10	Sep-10	Oct-10	Nov-10	Dec-10	Jan-11	Feb-11	Mar-11	Apr-11	May-11	Jun-11	Monthly Average	Total (12mths)	NPR* (Dec-09)
Total Unusual Incidents**	211	220	212	207	236	195	214	217	222	207	216	198	213		
Total Major Unusual Incidents	142	143	117	102	181	130	143	146	153	128	129	132	137		
Patient Involved UI Only**	194	202	200	197	209	179	197	208	200	193	200	188	197		
<i>Patient UI Rate</i>	<i>20.31</i>	<i>21.19</i>	<i>22.07</i>	<i>21.38</i>	<i>23.75</i>	<i>19.93</i>	<i>21.81</i>	<i>26.25</i>	<i>24.08</i>	<i>23.49</i>	<i>23.25</i>	<i>23.35</i>	<i>22.48</i>		
Unique Patients Involved in UI**	111	117	100	112	110	114	107	128	115	116	120	116	114		
Selected Types of Incidents	Physical Assault	43	44	32	29	46	41	62	50	46	33	47	43		
	Psych Emergency	30	26	28	24	49	16	32	14	14	16	18	24		
	Fall	33	27	18	18	20	22	24	20	23	20	15	22		
	Injury	46	49	28	23	43	29	30	41	34	25	20	22	33	
Total Patients Injured***	25	25	14	34	24	18	18	41	23	15	15	15	22	267	
Patients with Major Injuries***							0	6	5	0	2	2	3	15	
<i>Patient Injury Rate***</i>							<i>0.00</i>	<i>0.76</i>	<i>0.60</i>	<i>0.00</i>	<i>0.23</i>	<i>0.25</i>	<i>0.28</i>		<i>0.39</i>
Total Staff Injured**	24	18	12	12	9	12	22	18	16	10	9	10	14		
Total UL Incident Reports	2	3	1	8	6	1	4	3	4	3	7	4	4	46	
Total ULs Documented in Avatar	1	2	1	8	2	1	2	4	3	2	1	7	3		
<i>Elopement Rate</i>	<i>0.10</i>	<i>0.21</i>	<i>0.11</i>	<i>0.87</i>	<i>0.23</i>	<i>0.11</i>	<i>0.22</i>	<i>0.50</i>	<i>0.36</i>	<i>0.24</i>	<i>0.12</i>	<i>0.87</i>	<i>0.44</i>		<i>0.13</i>
Total Medication Variance (MV) Incidents Reported **	12	11	18	6	8	21	2	20	8	20	14	19	13	159	
<i>MV Rate</i>	<i>1.26</i>	<i>1.15</i>	<i>1.99</i>	<i>0.65</i>	<i>0.91</i>	<i>2.34</i>	<i>0.22</i>	<i>2.52</i>	<i>0.96</i>	<i>2.43</i>	<i>1.63</i>	<i>2.36</i>	<i>1.51</i>		
Total Adverse Drug Reactions (ADR) Reported	3	11	5	7	6	7	10	5	11	6	10	2	7	83	
<i>ADR Rate</i>	<i>0.31</i>	<i>1.15</i>	<i>0.55</i>	<i>0.76</i>	<i>0.68</i>	<i>0.78</i>	<i>1.11</i>	<i>0.63</i>	<i>1.32</i>	<i>0.73</i>	<i>1.16</i>	<i>0.25</i>	<i>0.79</i>		
Total Routine Medication Administrations Scheduled	114363	115810	109712	111397	104863	107095	105329	93288	99376	97031	101053			1159317	
Total Missing Documentations	729	659	626	512	490	309	365	413	540	507	361			5511	
<i>Percent of Missing Documentation</i>	<i>0.64%</i>	<i>0.57%</i>	<i>0.57%</i>	<i>0.46%</i>	<i>0.47%</i>	<i>0.29%</i>	<i>0.35%</i>	<i>0.44%</i>	<i>0.54%</i>	<i>0.52%</i>	<i>0.36%</i>			<i>0.48%</i>	
Total Patients with >=3 STATs	33	40	28	31	29	25	44	53	33	53	30	18	35		
Emergency STAT Med Orders Administered Involuntarily (EIM)				10	18	12	13	24	26	18	7	0	14		
Unique EIM Events				9	10	8	4	12	13	9	3	0	8		
Unique Patients given EIM				7	5	7	2	9	8	9	3	0	6		

* National Public Rate, NASMHPD Research Institute

** Numbers may change if any additional UI report is made after the data run date from UI database (around the 15th of the following month).

Performance Related Information for Staff & Managers

4. Restraint & Seclusion

Data Source: Restraint/Seclusion Log and UI DB (for # of total events and patients) and Avatar (for patient days/hours)

Updated as of 07/13/11

Category	Jul-10	Aug-10	Sep-10	Oct-10	Nov-10	Dec-10	Jan-11	Feb-11	Mar-11	Apr-11	May-11	Jun-11	Monthly Average	Total (12mths)	NPR* (Dec-09)
Number of Restraint Events	2	3	0	3	4	8	1	0	0	0	0	2	1.9	23	
Number of Unique Patients Restrained	2	2	0	3	3	2	1	0	0	0	0	2	1.3		
Percentage of Patients Restrained	0.6%	0.6%	0.0%	0.9%	0.9%	0.6%	0.3%	0.0%	0.0%	0.0%	0.0%	0.6%	0.4%		3.6%
Total Restraint Hours (h:mm)	2:05	4:15	0:00	3:20	2:46	11:08	0:20	0:00	0:00	0:00	0:00	2:50	2:13	26:44	
Restraint Hours Rate	0.01	0.02	0.00	0.02	0.01	0.05	0.00	0.00	0.00	0.00	0.00	0.01	0.01		0.42
Number of Seclusion Events	3	4	5	2	2	2	3	3	6	1	1	1	2.8	33	
Number of Unique Patients Secluded	3	4	4	2	2	4	2	3	3	1	1	1	2.5		
Percentage of Patients Secluded	0.8%	1.1%	1.2%	0.6%	0.6%	1.2%	0.6%	0.9%	1.0%	0.3%	0.3%	0.3%	0.7%		2.6%
Total Seclusion Hours (h:mm)	3:05	2:10	2:10	1:20	4:57	6:40	2:10	3:25	9:15	1:00	1:00	1:11	3:11	38:23	
Seclusion Hours Rate	0.01	0.01	0.01	0.01	0.02	0.03	0.01	0.02	0.05	0.01	0.00	0.01	0.02		0.55

* National Public Rate, NASMHPD Research Institute

Performance Related Information for Staff & Managers

5. Major Incidents by Incident Location/Unit

Data Source: UI DB

Updated as of 07/13/11

Category		Jul-10	Aug-10	Sep-10	Oct-10	Nov-10	Dec-10	Jan-11	Feb-11	Mar-11	Apr-11	May-11	Jun-11	Monthly Average	Total (11mths)	Percent
Total Unusual Incidents		211	220	212	207	236	195	214	217	222	207	216	198	213	2555	
Total Major Incidents*		142	143	117	102	181	130	143	146	153	128	129	132	137	1646	100%
Major Incident Location	1A	17	21	14	11	12	10	11	5	11	13	17	7	12	149	9%
	1B	7	7	12	13	12	6	6	9	12	7	24	16	11	131	8%
	1C	1	5	6	7	4	14	8	15	9	10	3	12	8	94	6%
	1D	13	18	19	11	42	32	9	10	14	13	11	10	17	202	12%
	1E	20	24	7	7	12	9	16	33	22	21	20	16	17	207	13%
	1F	14	9	11	9	13	12	14	20	9	9	11	12	12	143	9%
	1G	6	5	13	5	12	9	11	9	13	15	4	6	9	108	7%
	2A	4	7	6	2	4	4	6	3	4	2	3	2	4	47	3%
	2B	8	1	0	4	6	2	4	0	1	3	1	0	3	30	2%
	2C	10	4	3	5	12	11	17	14	18	7	11	11	10	123	7%
	2D	16	6	11	9	22	5	10	12	7	7	6	9	10	120	7%
	ANXA/B	2	5	2	3	4	0	5	0	-	-	-	-	3	21	1%
	TLC	14	12	3	7	10	3	12	9	17	11	7	18	10	123	7%
Other	10	19	10	9	16	13	14	7	16	10	11	13	12	148	9%	
Total Physical Assault Incidents		43	44	32	29	46	40	41	62	50	46	33	47	43	513	100%
Assault Incident Location	1A	3	2	2	1	5	2	4	1	1	3	3	1	2	28	5%
	1B	0	1	2	2	0	0	0	1	2	1	3	2	1	14	3%
	1C	0	3	2	4	2	6	4	3	2	3	0	5	3	34	7%
	1D	5	5	6	1	8	8	3	6	11	8	5	6	6	72	14%
	1E	8	12	3	1	5	3	4	17	8	13	8	5	7	87	17%
	1F	9	7	4	6	4	4	6	13	3	3	4	4	6	67	13%
	1G	3	4	4	2	7	4	6	8	7	5	0	3	4	53	10%
	2A	0	1	1	0	1	2	0	0	1	0	1	0	1	7	1%
	2B	1	0	0	0	2	1	0	0	0	0	1	0	0	5	1%
	2C	1	2	1	1	0	3	5	3	3	0	3	8	3	30	6%
	2D	6	3	5	5	10	4	5	5	4	3	1	4	5	55	11%
	ANXA/B	1	0	0	2	1	0	0	0	-	-	-	-	1	4	1%
	TLC	6	2	2	3	1	3	3	3	7	5	4	4	4	43	8%
Other	0	2	0	1	0	0	1	2	1	2	0	5	1	14	3%	

Performance Related Information for Staff & Managers

5. Major Incidents by Incident Location/Unit

Data Source: UI DB

Updated as of 07/13/11

Category	Jul-10	Aug-10	Sep-10	Oct-10	Nov-10	Dec-10	Jan-11	Feb-11	Mar-11	Apr-11	May-11	Jun-11	Monthly Average	Total (11mths)	Percent
Total Fall Incidents	33	27	18	18	20	22	24	20	23	20	15	23	22	263	100%
Fall Incident Location															
1A	10	11	5	7	5	3	5	2	7	5	1	5	6	66	25%
1B	3	1	2	5	3	2	3	2	1	2	1	3	2	28	11%
1C	0	0	0	0	1	5	0	2	2	1	1	0	1	12	5%
1D	0	2	1	1	0	3	1	1	0	2	2	2	1	15	6%
1E	2	0	0	1	0	1	3	1	0	0	3	0	1	11	4%
1F	1	1	2	0	1	0	0	0	1	0	1	0	1	7	3%
1G	1	0	1	0	0	1	1	0	2	0	0	0	1	6	2%
2A	1	2	1	0	0	1	1	1	1	1	0	0	1	9	3%
2B	3	1	0	2	0	0	0	0	0	1	0	0	1	7	3%
2C	1	0	1	1	4	2	2	5	2	2	2	1	2	23	9%
2D	6	2	0	1	4	0	1	1	0	2	0	1	2	18	7%
ANXA/B	0	1	2	0	0	0	0	0	-	-	-	-	0	3	1%
TLC	5	4	0	0	1	0	3	4	4	3	2	9	3	35	13%
Other	0	2	3	0	1	4	4	1	3	1	2	2	2	23	9%
Total Injury Incidents	46	49	28	23	43	29	30	41	34	25	20	22	33	390	100%
Injury Incident Location															
1A	3	7	4	3	5	2	2	0	3	3	1	0	3	33	8%
1B	2	2	1	3	2		2	2	3	0	6	1	2	24	6%
1C	0	3	0	3	2	3	2	0	1	2	1	1	2	18	5%
1D	6	5	6		12	8	1	2	6	3	2	4	5	55	14%
1E	10	7	3	1	3	2	2	8	2	2	4	3	4	47	12%
1F	5	5	2	2	6	3	3	10	1	1	3	3	4	44	11%
1G	2	3	1	0	3	2	3	5	4	4	0	0	2	27	7%
2A	1	2	1	0	0	3	1	0	1	0	0	0	1	9	2%
2B	3	0	0	1	2	0	1	0	0	0	0	0	1	7	2%
2C	1	2	2	2	1	0	3	3	6	1	0	1	2	22	6%
2D	6	4	2	3	4	2	1	6	1	2	1	2	3	34	9%
ANXA/B	0	1	2	1	0	0	0	0	-	-	-	-	1	4	1%
TLC	4	4	0	2	0	2	3	2	5	6	1	4	3	33	8%
Other	3	4	4	2	3	2	6	3	1	1	1	3	3	33	8%

* Not every incident is a major incident. This counts only those major incidents that required extensive investigations from the risk manager.

- Annex A/B Closed in February 2011. All patients were transferred to other units.

Performance Related Information for Staff & Managers

6. Demographic Information of Individuals in Care

Data Source: Avatar

Updated as of 07/13/11

Category	Sub-group	Jul-10	Aug-10	Sep-10	Oct-10	Nov-10	Dec-10	Jan-11	Feb-11	Mar-11	Apr-11	May-11	Jun-11	Monthly Average	Percent*
Total Active (on Roll) at End of Month*				311	307	303	301	299	275	279	288	287	271	292	
Gender	Female			86	80	75	74	71	66	67	69	72	59	72	24.6%
	Male			225	227	228	227	228	209	212	219	215	212	220	75.4%
Age	Median Age (Years)			55 yrs	55 yrs	55 yrs	55 yrs	54 yrs	55 yrs	55 yrs	55 yrs	55 yrs	55 yrs	55 yrs	
	<30 years old			23	18	14	15	14	16	15	19	20	18	17	5.9%
	>=30 and <40 years old			21	22	24	30	31	23	27	29	30	23	26	8.9%
	>=40 and <50 years old			59	64	62	56	58	47	49	47	47	45	53	18.3%
	>=50 and <60 years old			119	120	119	118	114	114	108	113	111	107	114	39.1%
	>=60 years old			89	83	84	82	82	75	80	80	79	78	81	27.8%
Legal Status of Individuals on Roll at End of Month	Emergency			36			26	19	19	21	22	15	14	22	7.4%
	Inpatient Commitment			35			33	35	32	31	30	30	33	32	11.1%
	Outpatient Commitment			31			30	32	29	29	28	30	26	29	10.1%
	Voluntary			43			46	43	41	40	41	41	40	42	14.3%
	Civil Sub-total			145			135	129	121	121	121	116	113	125	42.8%
	DC Exam			52			51	55	42	41	49	51	38	47	16.2%
	Mentally Incompetent			5			3	3	2	2	4	4	3	3	1.1%
	NGBRI - DC			91			94	94	93	98	96	96	98	95	32.5%
	NGBRI - US			10			10	10	9	9	10	12	12	10	3.5%
	NGBIR - VI			2			2	2	2	2	2	2	2	2	0.7%
Dual Commitment			1			1	1	1	1	1	1	1	1	0.3%	
Non-Protesting			1			1	1	1	1	1	1	1	1	0.3%	
Sexual Psychopath (Miller Act)			4			4	4	4	4	4	4	3	4	1.3%	
	Forensic Sub-total			166			166	170	154	158	167	171	158	164	56.1%
Length of Stay	Median LOS (Days)			811 d			903 d	934 d	1091 d	994 d	923 d	949 d	1073 d	960 d	
	Average LOS (Days)			2967 d			3099 d	3133 d	3282 d	3192 d	3069 d	3093 d	3261 d	3137 d	
	<30 Days			28			27	32	30	33	34	30	22	30	10.1%
	>=30 ~ <365 Days			82			79	74	60	62	68	72	69	71	24.2%
	>= 1 Year & < 2 Years			38			30	29	27	28	32	29	25	30	10.2%
	>= 2 Years & < 5 Years			44			48	47	45	44	40	43	43	44	15.1%
	>= 5 Years & < 20 Years			69			66	66	63	64	67	65	64	66	22.4%
>= 20 Years			50			51	51	50	48	47	48	48	49	16.8%	

* Counts the total number of individuals who are on the hospital roll at end of each month. This number serves as denominator to calculate percentage of each group.