

**Government of the District of Columbia  
Department of Mental Health (DMH)**

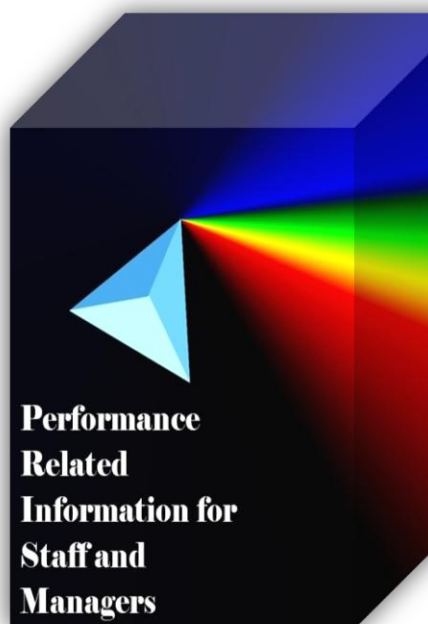


**Performance Related Information for Staff and Managers**

# **PRISM**

## **MAY 2011**

Table of Contents

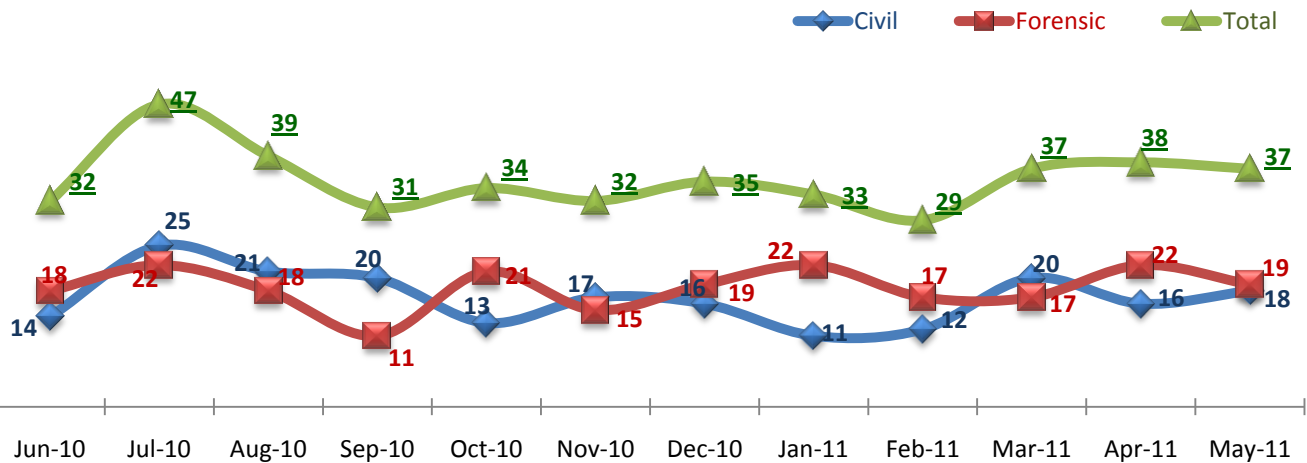


1.	Admissions to SEH .....	1
2.	Discharges from SEH.....	1
3.	Average Daily Census .....	1
4.	Transfers .....	2
5.	30-Day Readmission Rate .....	2
6.	Unusual Incidents.....	2
7.	Patient-Involved Unusual Incidents.....	3
8.	Eloperments .....	3
9.	Selected Types of Incidents .....	3
10.	Patient Injuries .....	4
11.	Staff Injuries .....	4
12.	Reported Medication Variances .....	4
13.	Reported Adverse Drug Reactions .....	5
14.	Percent of Missing Documentation on Med-Administration.....	5
15.	Emergency Involuntary Medications .....	5
16.	Percent of Patients Restrained or Secluded.....	6
17.	Restraint Hours Rate & Seclusion Hours Rate .....	6
	<input type="checkbox"/> Appendix 1) Table – Census, Admissions & Discharges	
	<input type="checkbox"/> Appendix 2) Table – Key Performance Indicators	
	<input type="checkbox"/> Appendix 3) Table – Unusual Incident & Medication	
	<input type="checkbox"/> Appendix 4) Table – Restraint & Seclusion	
	<input type="checkbox"/> Appendix 5) Table – Major Incidents by Incident Location/Unit	
	<input type="checkbox"/> Appendix 6) Table – Demographic Information of Individuals in Care	

**06/09/2011**

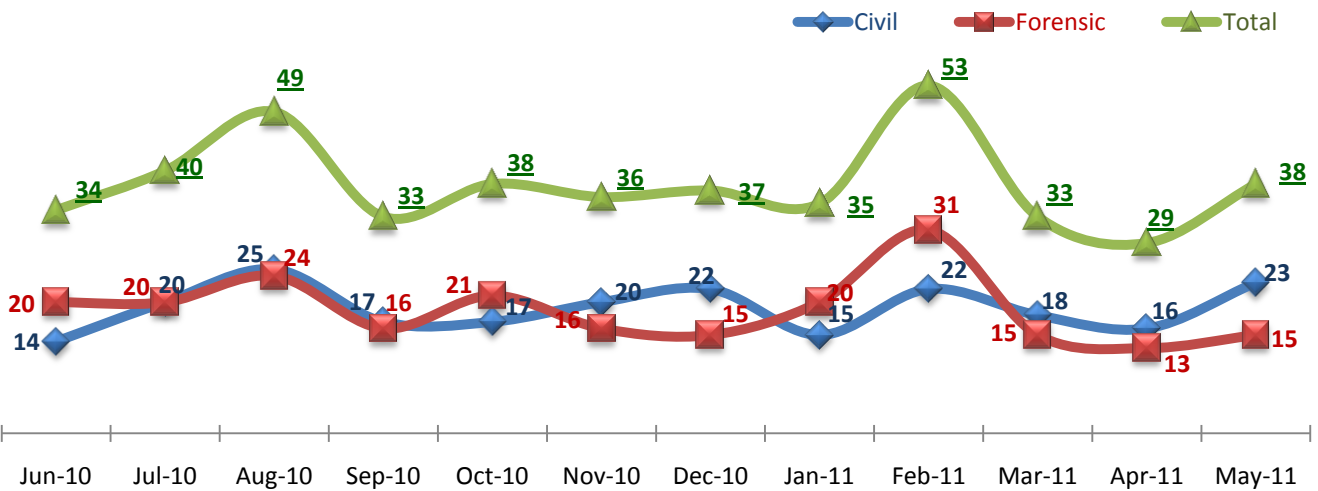
**Office of Statistics and Reporting (OSR)**

### 1. Admissions to SEH



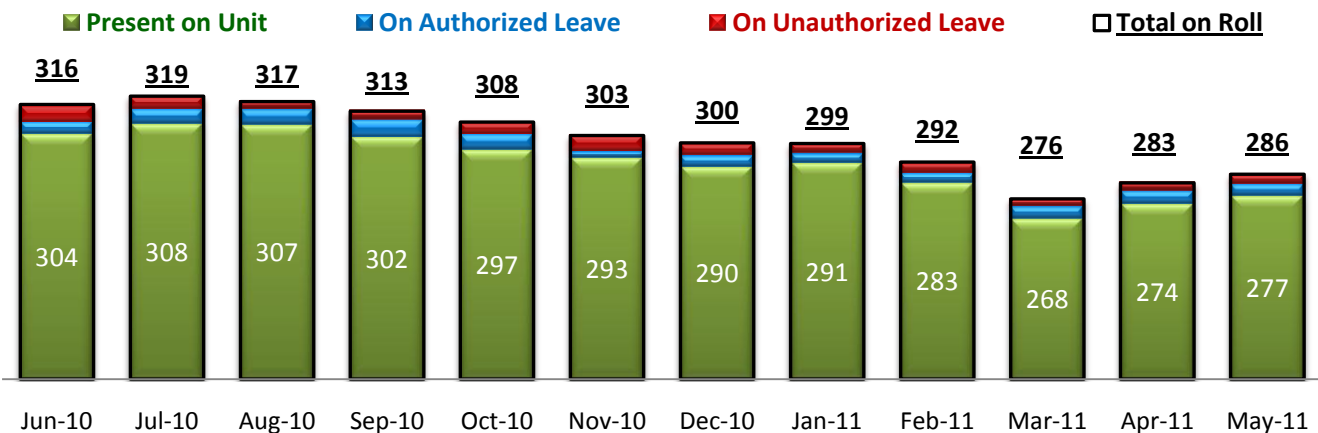
\* Number of admissions to SEH inpatient program to SEH, including transfers from outpatient to inpatient program.

### 2. Discharges from SEH



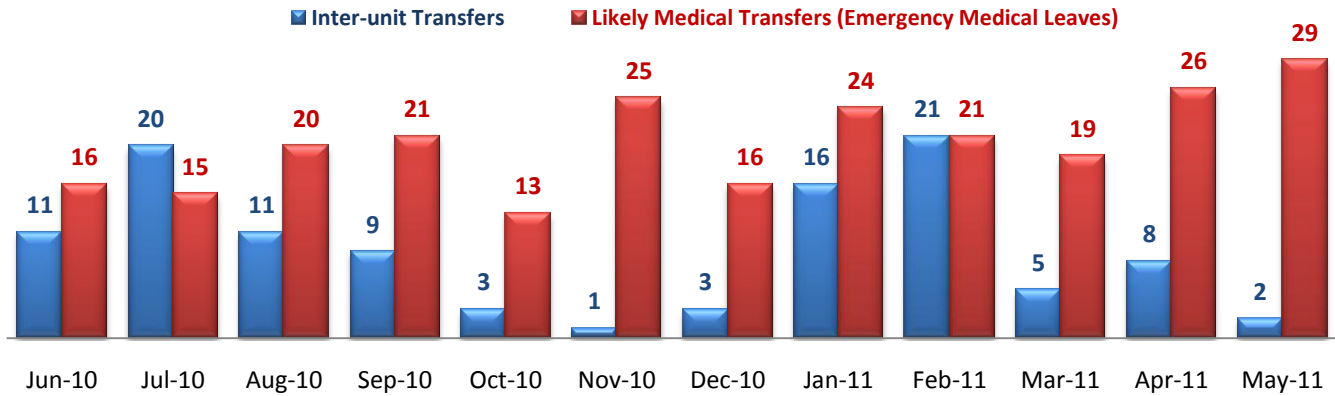
\* Number of discharges from SEH inpatient program, including transfers from inpatient to outpatient program.

### 3. Average Daily Census



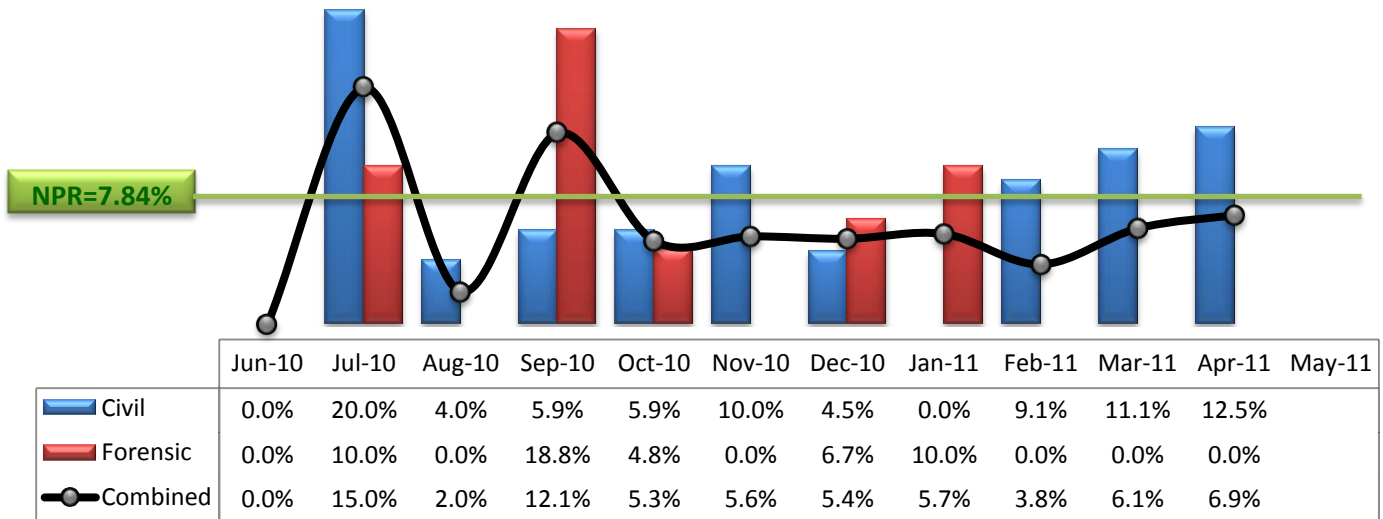
\* Data above is the daily average number of individuals counted at 11:59 PM every day during each month.

### 4. Transfers



\* Number of inter-unit transfers that occurred during month and number of emergency medical leaves that were initiated during month.

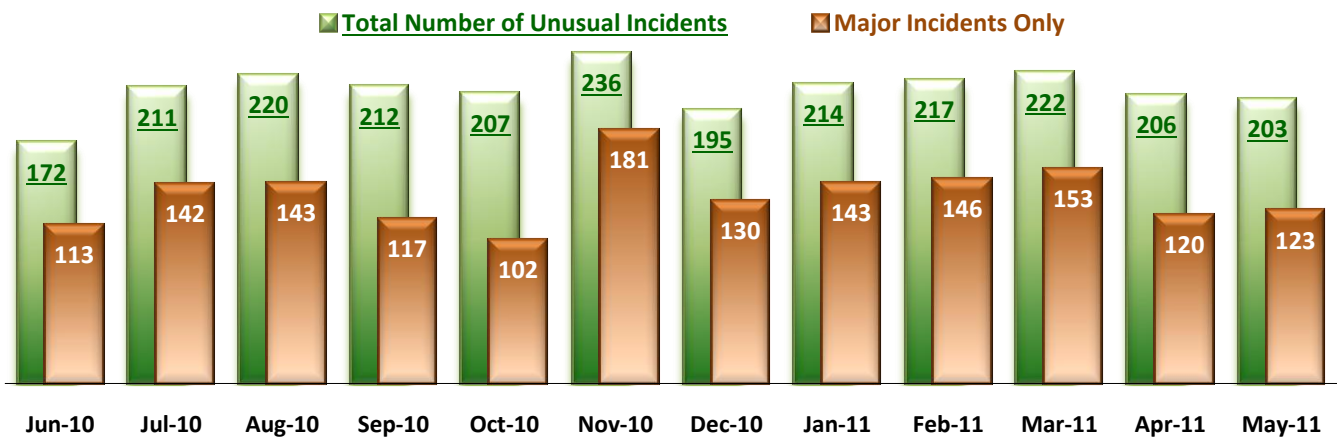
### 5. 30-Day Readmission Rate



\* Percent of discharges that returned to SEH within 30 days of discharges. It does not include those who may have been re-hospitalized to another psychiatric facility. This measure requires 30-day observation following discharge.

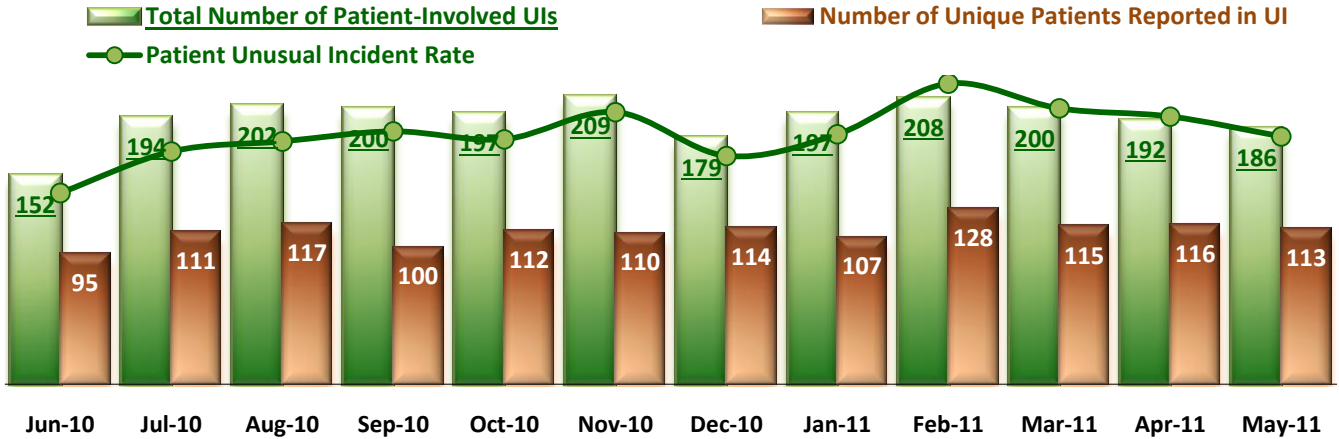
\*\* NPR: National Public Rate as of December 2009 published by NASMHPD Research Institute in May 2010.

### 6. Unusual Incidents



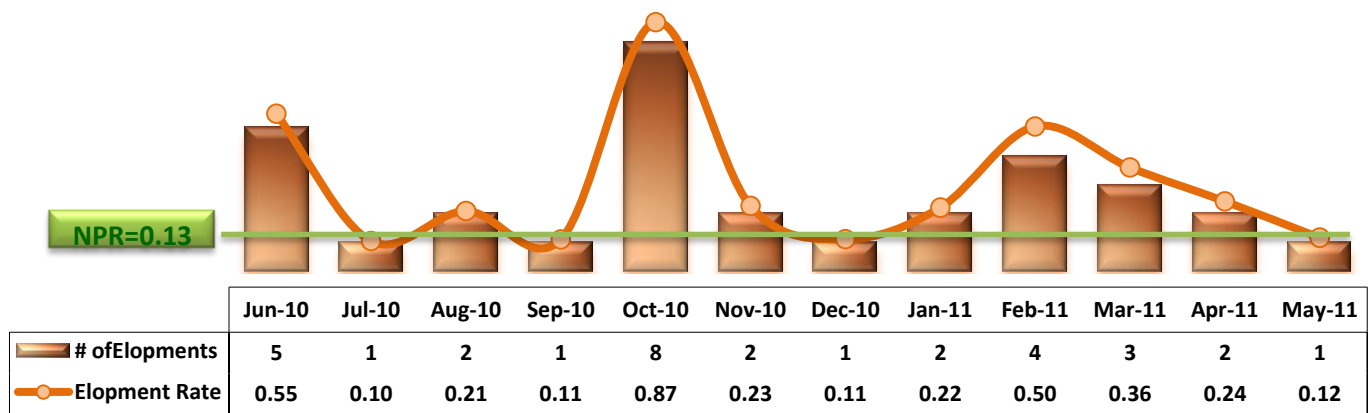
\* Numbers above represent all types of the unusual incidents (UIs) that were reported to the Risk Manager by PRISM publication date, including those that did not involve any patients.

### 7. Patient-Involved Unusual Incidents



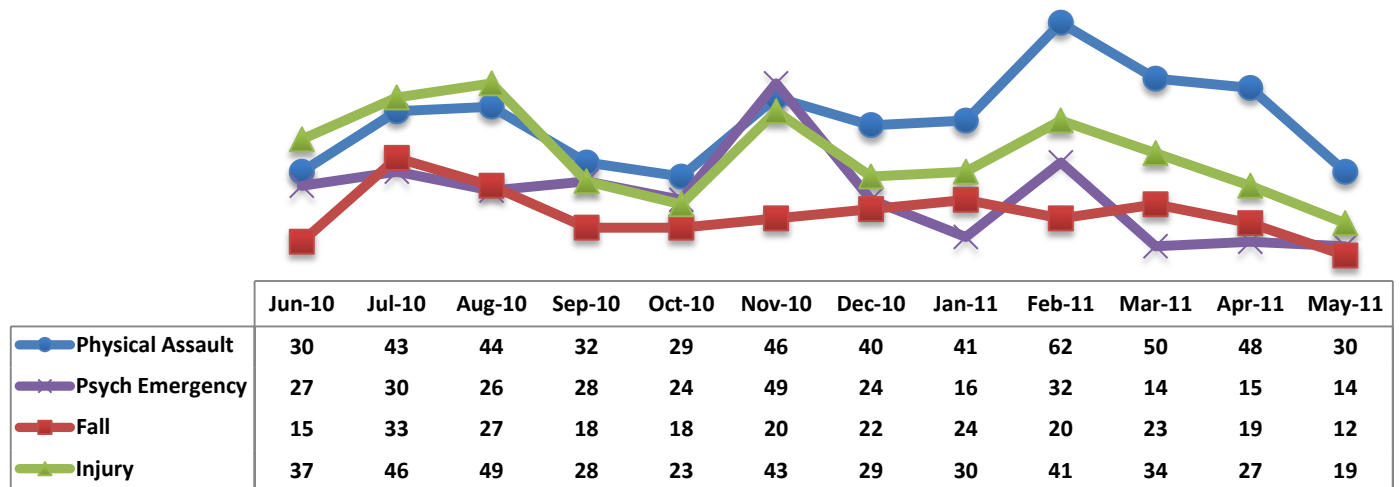
\*The total number of patient-involved UIs counts only those incidents that involved at least one or more patients. Some patients may be involved in more than one incident and the number of unique patients does not double count them. The patient UI rate is the number of patient-involved unusual incidents reported for every 1000 inpatient days.

### 8. Elopements



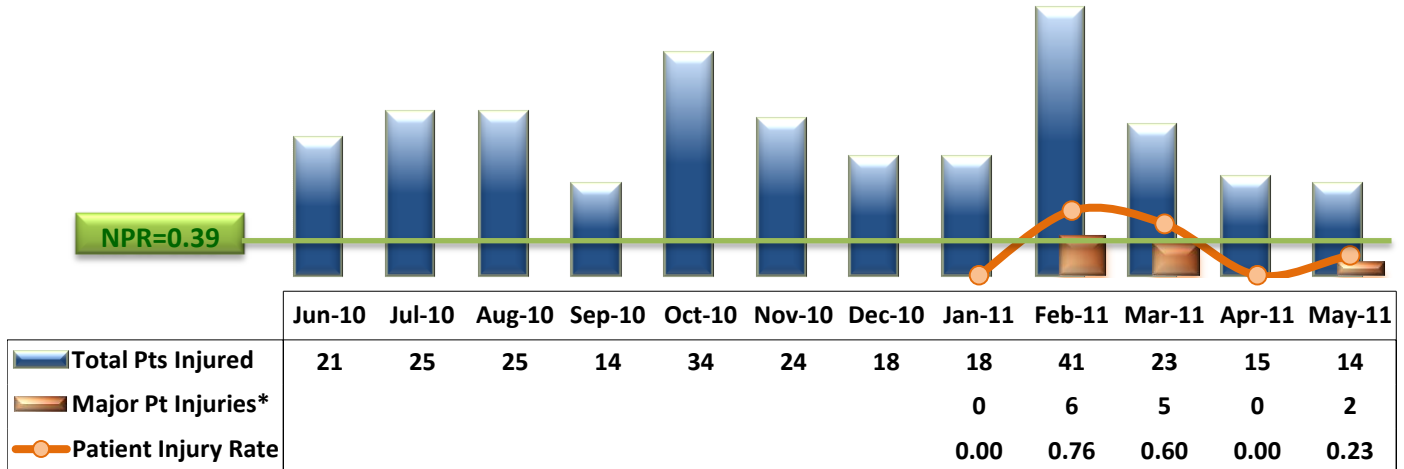
\* It counts the total number of unauthorized leaves for any duration that were initiated during month and were recorded in Avatar. The elopement rate is the number of those unauthorized leaves that occurred for every 1000 inpatient days.

### 9. Selected Types of Incidents



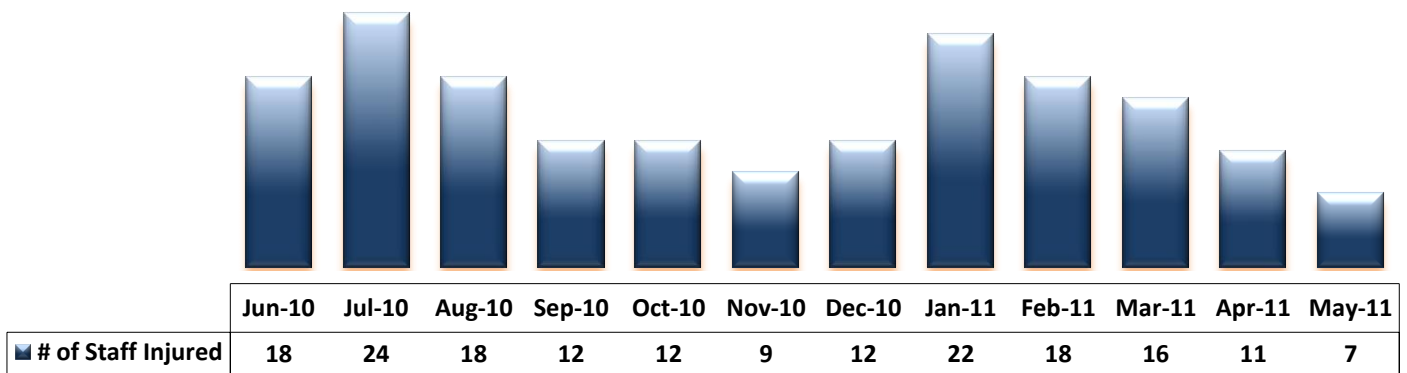
\* These are incident types that are frequently reported. Some incidents may be counted in multiple categories. For example, a physical assault incident that accompanied psychiatric emergency and injury is counted under psychiatric emergency and injury as well as under physical assault. Injury is broadly defined to include any type of injuries regardless of the cause or severity level.

### 10. Patient Injuries



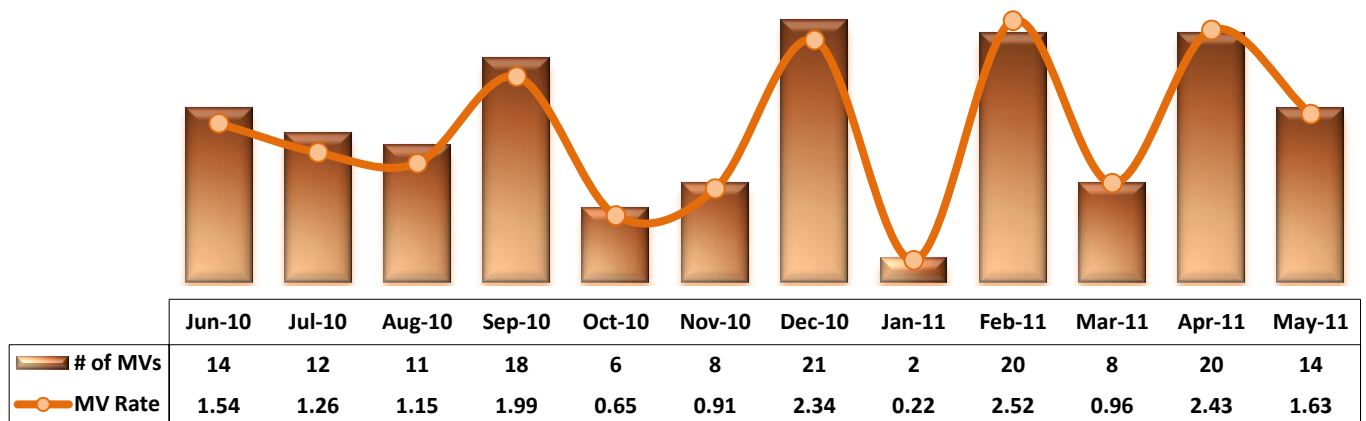
\* Injury is broadly defined to include any type of injuries regardless of the cause or severity level. The total number of patients injured represents all of the reported injuries including minor injuries treated with first aid alone. However, the patient injury rate considers only the number of patient injuries that required beyond first-aid level treatment based on the NRI definition and the patient injury rate is the number of 'major' patient injuries per every 1000 inpatient days. The major patient injury data became available in January 2011.

### 11. Staff Injuries



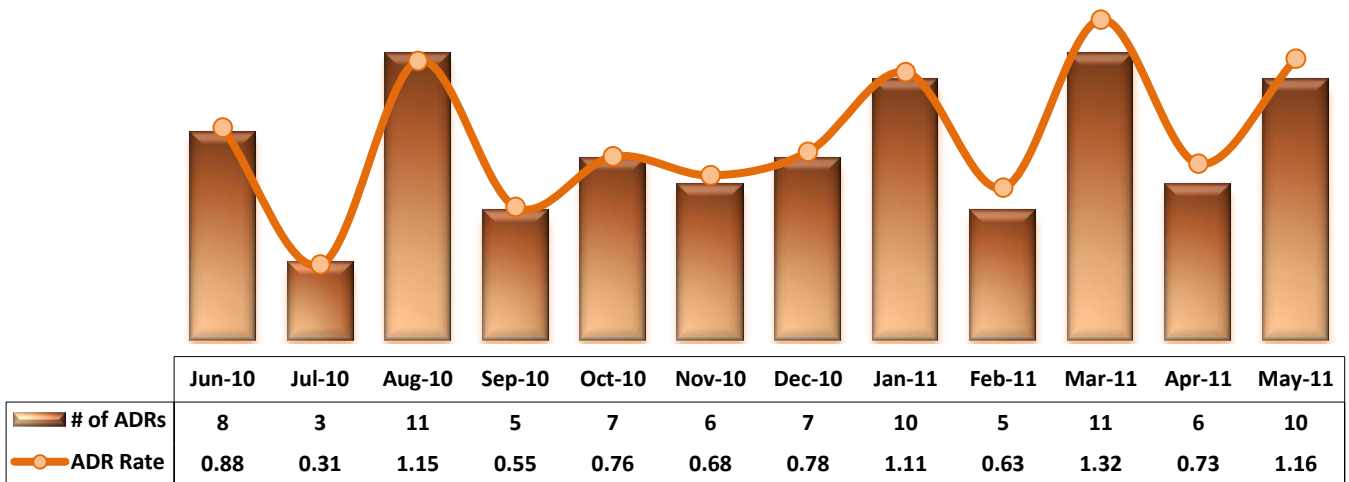
\* Injury is broadly defined to include any type of injuries regardless of the cause or severity level. The total number of staff injured represents all of the reported staff injuries including minor injuries treated with first aid alone.

### 12. Reported Medication Variances



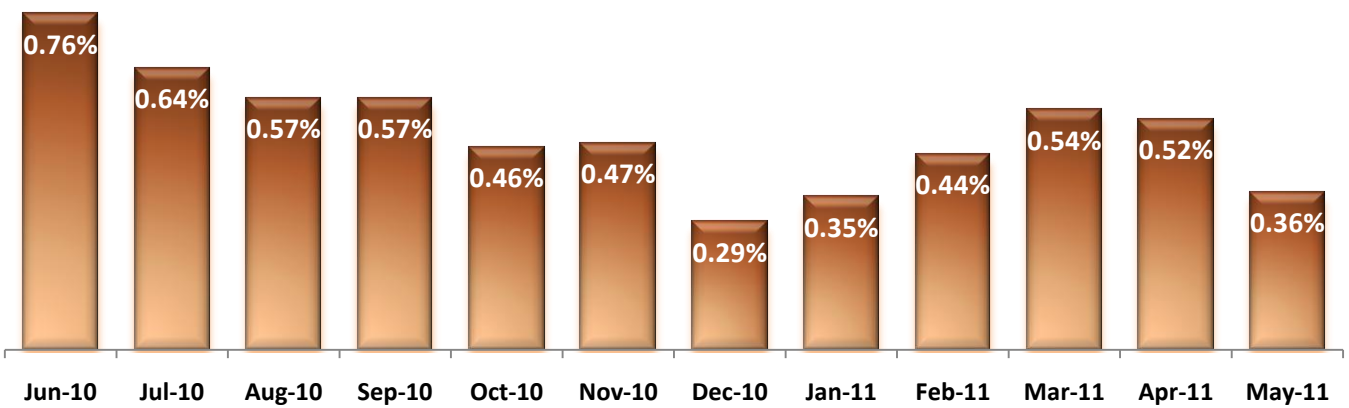
\* MV Rate: Number of reported medication variance events that occurred for every 1000 inpatient days.

### 13. Reported Adverse Drug Reactions

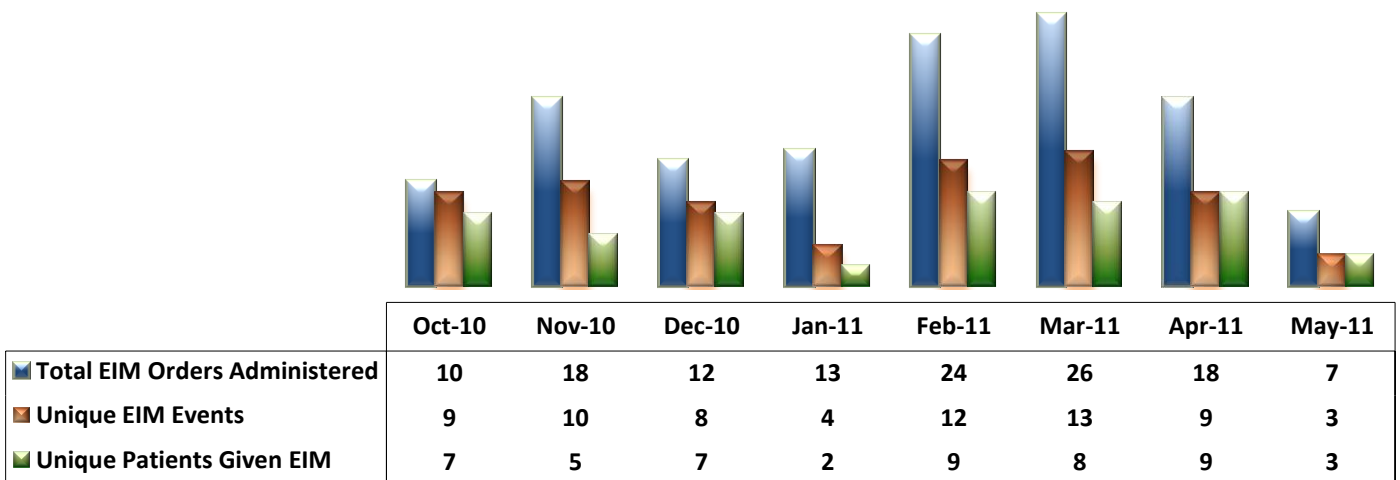


\* ADR Rate: Number of reported adverse drug reaction events that occurred for every 1000 inpatient days.

### 14. Percent of Missing Documentation on Med-Administration

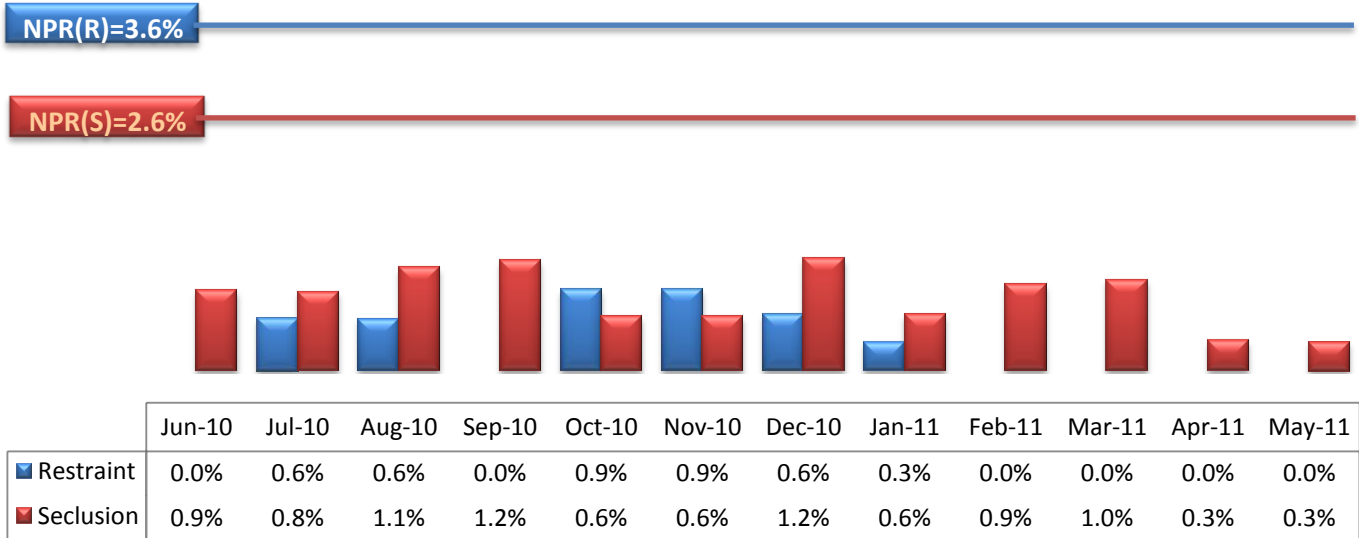


### 15. Emergency Involuntary Medications



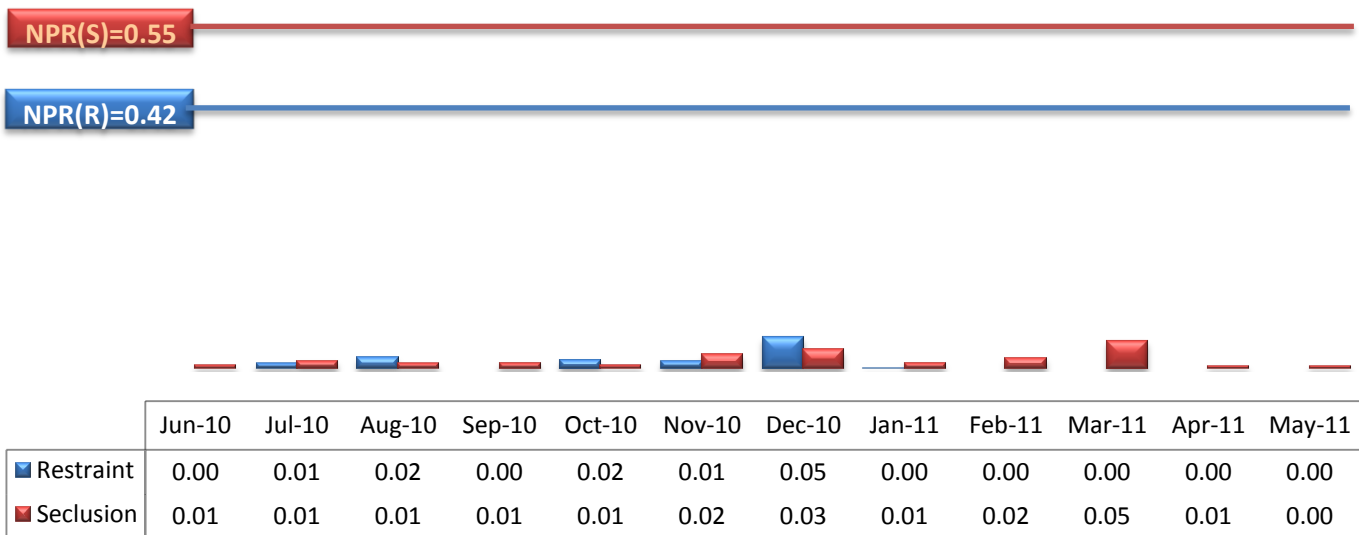
\* Some patients may have experienced multiple EIM events during month and some events may have involved multiples doses of medication ordered and administered.

### 16. Percent of Patients Restrained or Secluded



\* Percent of unique patients who were restrained at least once and percent of unique patients who were secluded at least once.

### 17. Restraint Hours Rate & Seclusion Hours Rate



\* Restraint/Seclusion Hours Rate: Number of hours spent in restraint/seclusion for every 1000 inpatient hours.



## Performance Related Information for Staff &amp; Managers

## 1. Census, Admissions, Discharges &amp; Transfers

Data Source: Avatar

Updated as of 06/07/11

Category	Program	Jun-10	Jul-10	Aug-10	Sep-10	Oct-10	Nov-10	Dec-10	Jan-11	Feb-11	Mar-11	Apr-11	May-11	Monthly Average	Total (12mths)	Figure
Admissions	Civil	14	25	21	20	13	17	16	11	12	20	16	18	17	203	Figure 1
	Forensic	18	22	18	11	21	15	19	22	17	17	22	19	18	221	
	<b>Total</b>	<b>32</b>	<b>47</b>	<b>39</b>	<b>31</b>	<b>34</b>	<b>32</b>	<b>35</b>	<b>33</b>	<b>29</b>	<b>37</b>	<b>38</b>	<b>37</b>	<b>35</b>	<b>424</b>	
Discharges	Civil	14	20	25	17	17	20	22	15	22	18	16	23	19	229	Figure 2
	Forensic	20	20	24	16	21	16	15	20	31	15	13	15	19	226	
	<b>Total</b>	<b>34</b>	<b>40</b>	<b>49</b>	<b>33</b>	<b>38</b>	<b>36</b>	<b>37</b>	<b>35</b>	<b>53</b>	<b>33</b>	<b>29</b>	<b>38</b>	<b>38</b>	<b>455</b>	
Net Gain During Month	Civil	0	5	-4	3	-4	-3	-6	-4	-10	2	0	-5		-26	
	Forensic	-2	2	-6	-5	0	-1	4	2	-14	2	9	4		-5	
	<b>Total</b>	<b>-2</b>	<b>7</b>	<b>-10</b>	<b>-2</b>	<b>-4</b>	<b>-4</b>	<b>-2</b>	<b>-2</b>	<b>-24</b>	<b>4</b>	<b>9</b>	<b>-1</b>		<b>-31</b>	
All Individuals on Roll at End of Month		<b>316</b>	<b>323</b>	<b>313</b>	<b>311</b>	<b>307</b>	<b>303</b>	<b>301</b>	<b>299</b>	<b>275</b>	<b>279</b>	<b>288</b>	<b>287</b>	<b>300</b>		
a. Present on Unit		302	312	304	303	295	292	289	290	268	275	280	277	291		
b. On AL		7	6	6	5	7	6	7	6	3	1	5	6	5		
c. On UL		7	5	3	3	5	5	5	3	4	3	3	4	4		
All Individuals on Roll: Daily Average during Month		<b>316</b>	<b>319</b>	<b>317</b>	<b>313</b>	<b>308</b>	<b>303</b>	<b>300</b>	<b>299</b>	<b>292</b>	<b>276</b>	<b>283</b>	<b>286</b>	<b>301</b>		Figure 3
a. Present on Unit*		<b>304</b>	<b>308</b>	<b>307</b>	<b>302</b>	<b>297</b>	<b>293</b>	<b>290</b>	<b>291</b>	<b>283</b>	<b>268</b>	<b>274</b>	<b>277</b>	<b>291</b>		
b. On AL		5	6	6	8	6	3	5	4	4	5	6	5	5		
c. On UL		7	5	3	3	5	7	5	4	4	3	3	4	5		
Patient Days*		<b>9105</b>	<b>9553</b>	<b>9532</b>	<b>9063</b>	<b>9213</b>	<b>8799</b>	<b>8983</b>	<b>9031</b>	<b>7925</b>	<b>8307</b>	<b>8217</b>	<b>8601</b>	<b>8861</b>	<b>106329</b>	
Inter-Unit Transfers during Month		<b>11</b>	<b>20</b>	<b>11</b>	<b>9</b>	<b>3</b>	<b>1</b>	<b>3</b>	<b>16</b>	<b>21</b>	<b>5</b>	<b>8</b>	<b>2</b>	<b>9</b>	<b>110</b>	Figure 4
Medical Leaves Initiated during Month	Emergency	16	15	20	21	13	25	16	24	21	19	26	29	20	245	
	Non-Emer	14	10	13	9	12	20	23	26	21	21	35	15	18	219	
<b>Total</b>		<b>30</b>	<b>25</b>	<b>33</b>	<b>30</b>	<b>25</b>	<b>45</b>	<b>39</b>	<b>50</b>	<b>42</b>	<b>40</b>	<b>61</b>	<b>44</b>	<b>39</b>	<b>464</b>	
Non-Medical Leaves Initiated during Month		<b>83</b>	<b>71</b>	<b>59</b>	<b>82</b>	<b>102</b>	<b>81</b>	<b>93</b>	<b>91</b>	<b>111</b>	<b>67</b>	<b>60</b>	<b>56</b>	<b>80</b>	<b>956</b>	
UL Initiated during Month		<b>5</b>	<b>1</b>	<b>2</b>	<b>1</b>	<b>8</b>	<b>2</b>	<b>1</b>	<b>2</b>	<b>4</b>	<b>3</b>	<b>2</b>	<b>1</b>	<b>3</b>	<b>32</b>	
Total Unique Patients Served during Month		<b>348</b>	<b>355</b>	<b>361</b>	<b>340</b>	<b>343</b>	<b>343</b>	<b>334</b>	<b>334</b>	<b>325</b>	<b>308</b>	<b>311</b>	<b>324</b>	<b>336</b>		
30 Day Readmission **	Civil	0	4	1	1	1	2	1	0	2	2	2		1	16	
	Forensic	0	2	0	3	1	0	1	2	0	0	0		1	9	
	<b>Total</b>	<b>0</b>	<b>6</b>	<b>1</b>	<b>4</b>	<b>2</b>	<b>2</b>	<b>2</b>	<b>2</b>	<b>2</b>	<b>2</b>	<b>2</b>		<b>2</b>	<b>25</b>	

\* Counts the number of patients who are present on the unit and excludes those on authorized or unauthorized leave at 11:59pm on a given day.

\*\* Number of patients returning within 30 days of discharges that occurred during month.



## Performance Related Information for Staff &amp; Managers

## 2. Key Performance Indicators

Data Source: UI DB, ADR DB, Restraint/Seclusion Log, and Avatar

Updated as of 06/07/11

Category	Program	Jun-10	Jul-10	Aug-10	Sep-10	Oct-10	Nov-10	Dec-10	Jan-11	Feb-11	Mar-11	Apr-11	May-11	Monthly Average	NPR* (Dec-09)	Figure
30 Day Readmit (Discharge Cohort)**	Civil	0.0%	20.0%	4.0%	5.9%	5.9%	10.0%	4.5%	0.0%	9.1%	11.1%	12.5%		7.6%		Figure 5
	Forensic	0.0%	10.0%	0.0%	18.8%	4.8%	0.0%	6.7%	10.0%	0.0%	0.0%	0.0%		4.3%		
	Combined	0.0%	15.0%	2.0%	12.1%	5.3%	5.6%	5.4%	5.7%	3.8%	6.1%	6.9%		6.0%	7.8%	
Number of Unusual Incidents		172	211	220	212	207	236	195	214	217	222	206	203	210		Figure 6
Patient Unusual Incident Rate		16.69	20.31	21.19	22.07	21.38	23.75	19.93	21.81	26.25	24.08	23.37	21.63	21.78		Figure 7
Elopement Rate		0.55	0.10	0.21	0.11	0.87	0.23	0.11	0.22	0.50	0.36	0.24	0.12	0.43	0.13	Figure 8
Selected Types of Incidents	Physical Assault	30	43	44	32	29	46	40	41	62	50	48	30	41		Figure 9
	Psych Emergency	27	30	26	28	24	49	24	16	32	14	15	14	25		
	Fall	15	33	27	18	18	20	22	24	20	23	19	12	21		
	Injury***	37	46	49	28	23	43	29	30	41	34	27	19	34		
Patient Injury Rate***									0.00	0.76	0.60	0.00	0.23	0.29	0.39	Figure 10
Patients with Major Injuries***									0	6	5	0	2	3		
Total Patients Injured***		21	25	25	14	34	24	18	18	41	23	15	14	23		
Total Staff Injured***		18	24	18	12	12	9	12	22	18	16	11	7	15		Figure 11
Medication Variance Rate		1.54	1.26	1.15	1.99	0.65	0.91	2.34	0.22	2.52	0.96	2.43	1.63	1.45		Figure 12
Adverse Drug Reaction Rate		0.88	0.31	1.15	0.55	0.76	0.68	0.78	1.11	0.63	1.32	0.73	1.16	0.84		Figure 13
Percent of Missing Documentation of Medication Administration		0.76%	0.64%	0.57%	0.57%	0.46%	0.47%	0.29%	0.35%	0.44%	0.54%	0.52%	0.36%	0.50%		Figure 14
Emergency STAT Med Orders Administered Involuntarily (EIM)							18	12	13	24	26	18	7	16		Figure 15
Unique EIM Events							10	8	4	12	13	9	3	9		
Unique Patients given EIM							5	7	2	9	8	9	3	6		
Percent of Patients Restrained		0.0%	0.6%	0.6%	0.0%	0.9%	0.9%	0.6%	0.3%	0.0%	0.0%	0.0%	0.0%	0.3%	3.6%	Figure 16
Percent of Patients Secluded		0.9%	0.8%	1.1%	1.2%	0.6%	0.6%	1.2%	0.6%	0.9%	1.0%	0.3%	0.3%	0.8%	2.6%	
Restraint Hours Rate		0.00	0.01	0.02	0.00	0.02	0.01	0.05	0.00	0.00	0.00	0.00	0.00	0.01	0.42	Figure 17
Seclusion Hours Rate		0.01	0.01	0.01	0.01	0.01	0.02	0.03	0.01	0.02	0.05	0.01	0.00	0.02	0.55	

\* National Public Rate, NASMHPD Research Institute

\*\* Percentage of patients returning within 30 days of discharges that occurred during month

\*\*\*

Injury is broadly defined to include any type of injuries regardless of the cause or severity level. The total number of patients or staff injured represents all of the reported injuries including minor injuries treated with first aid alone. However, the patient injury rate considers only the number of patient injuries that required beyond first-aid level treatment based on the NRI definition and the patient injury rate is the number of 'major' patient injuries per every 1000 inpatient days. The patient major injury data became available in January 2011.

## Performance Related Information for Staff &amp; Managers

## 3. Unusual Incident &amp; Medication

Data Source: UI DB, ADR DB, and Avatar

Updated as of 06/07/11

Category	Jun-10	Jul-10	Aug-10	Sep-10	Oct-10	Nov-10	Dec-10	Jan-11	Feb-11	Mar-11	Apr-11	May-11	Monthly Average	Total (12mths)	NPR* (Dec-09)
Total Unusual Incidents**	172	211	220	212	207	236	195	214	217	222	206	203	210		
Total Major Unusual Incidents	113	142	143	117	102	181	130	143	146	153	120	123	134		
Patient Involved UI Only**	152	194	202	200	197	209	179	197	208	200	192	186	193		
<i>Patient UI Rate</i>	<i>16.69</i>	<i>20.31</i>	<i>21.19</i>	<i>22.07</i>	<i>21.38</i>	<i>23.75</i>	<i>19.93</i>	<i>21.81</i>	<i>26.25</i>	<i>24.08</i>	<i>23.37</i>	<i>21.63</i>	<i>21.78</i>		
Unique Patients Involved in UI**	95	111	117	100	112	110	114	107	128	115	116	113	112		
Selected Types of Incidents	Physical Assault	30	43	44	32	29	46	41	62	50	48	30	41		
	Psych Emergency	27	30	26	28	24	49	16	32	14	15	14	25		
	Fall	15	33	27	18	18	20	22	24	20	23	19	21		
	Injury	37	46	49	28	23	43	29	30	41	34	27	34		
Total Patients Injured***	21	25	25	14	34	24	18	18	41	23	15	14	23	272	
Patients with Major Injuries***								0	6	5	0	2	3	13	
<i>Patient Injury Rate***</i>								<i>0.00</i>	<i>0.76</i>	<i>0.60</i>	<i>0.00</i>	<i>0.23</i>	<i>0.29</i>		<i>0.39</i>
Total Staff Injured**	18	24	18	12	12	9	12	22	18	16	11	7	15		
Total UL Incident Reports	5	2	3	1	8	6	1	4	3	4	2	7	4	46	
Total ULs Documented in Avatar	5	1	2	1	8	2	1	2	4	3	2	1	3		
<i>Elopement Rate</i>	<i>0.55</i>	<i>0.10</i>	<i>0.21</i>	<i>0.11</i>	<i>0.87</i>	<i>0.23</i>	<i>0.11</i>	<i>0.22</i>	<i>0.50</i>	<i>0.36</i>	<i>0.24</i>	<i>0.12</i>	<i>0.43</i>		<i>0.13</i>
Total Medication Variance (MV) Incidents Reported **	14	12	11	18	6	8	21	2	20	8	20	14	13	154	
<i>MV Rate</i>	<i>1.54</i>	<i>1.26</i>	<i>1.15</i>	<i>1.99</i>	<i>0.65</i>	<i>0.91</i>	<i>2.34</i>	<i>0.22</i>	<i>2.52</i>	<i>0.96</i>	<i>2.43</i>	<i>1.63</i>	<i>1.45</i>		
Total Adverse Drug Reactions (ADR) Reported	8	3	11	5	7	6	7	10	5	11	6	10	7	89	
<i>ADR Rate</i>	<i>0.88</i>	<i>0.31</i>	<i>1.15</i>	<i>0.55</i>	<i>0.76</i>	<i>0.68</i>	<i>0.78</i>	<i>1.11</i>	<i>0.63</i>	<i>1.32</i>	<i>0.73</i>	<i>1.16</i>	<i>0.84</i>		
Total Routine Medication Administrations Scheduled	109765	114363	115810	109712	111397	104863	107095	105329	93288	99376	97031	101053		1269082	
Total Missing Documentations	835	729	659	626	512	490	309	365	413	540	507	361		6346	
<i>Percent of Missing Documentation</i>	<i>0.76%</i>	<i>0.64%</i>	<i>0.57%</i>	<i>0.57%</i>	<i>0.46%</i>	<i>0.47%</i>	<i>0.29%</i>	<i>0.35%</i>	<i>0.44%</i>	<i>0.54%</i>	<i>0.52%</i>	<i>0.36%</i>		<i>0.50%</i>	
Total Patients with >=3 STATs	30	33	40	28	31	29	25	44	53	33	53	30	36		
Emergency STAT Med Orders Administered Involuntarily (EIM)					10	18	12	13	24	26	18	7	16		
Unique EIM Events					9	10	8	4	12	13	9	3	9		
Unique Patients given EIM					7	5	7	2	9	8	9	3	6		

\* National Public Rate, NASMHPD Research Institute

\*\* Numbers may change if any additional UI report is made after the data run date from UI database (around the 15th of the following month).

## Performance Related Information for Staff &amp; Managers

## 4. Restraint &amp; Seclusion

Data Source: Restraint/Seclusion Log and UI DB (for # of total events and patients) and Avatar (for patient days/hours)

Updated as of 06/07/11

Category	Jun-10	Jul-10	Aug-10	Sep-10	Oct-10	Nov-10	Dec-10	Jan-11	Feb-11	Mar-11	Apr-11	May-11	Monthly Average	Total (12mths)	NPR* (Dec-09)
Number of Restraint Events	0	2	3	0	3	4	8	1	0	0	0	0	1.8	21	
Number of Unique Patients Restrained	0	2	2	0	3	3	2	1	0	0	0	0	1.1		
Percentage of Patients Restrained	0.0%	0.6%	0.6%	0.0%	0.9%	0.9%	0.6%	0.3%	0.0%	0.0%	0.0%	0.0%	0.3%		3.6%
Total Restraint Hours (h:mm)	0:00	2:05	4:15	0:00	3:20	2:46	11:08	0:20	0:00	0:00	0:00	0:00	1:59	23:54	
Restraint Hours Rate	0.00	0.01	0.02	0.00	0.02	0.01	0.05	0.00	0.00	0.00	0.00	0.00	0.01		0.42
Number of Seclusion Events	4	3	4	5	2	2	2	3	3	6	1	1	3.0	36	
Number of Unique Patients Secluded	3	3	4	4	2	2	4	2	3	3	1	1	2.7		
Percentage of Patients Secluded	0.9%	0.8%	1.1%	1.2%	0.6%	0.6%	1.2%	0.6%	0.9%	1.0%	0.3%	0.3%	0.8%		2.6%
Total Seclusion Hours (h:mm)	1:22	3:05	2:10	2:10	1:20	4:57	6:40	2:10	3:25	9:15	1:00	1:00	3:12	38:34	
Seclusion Hours Rate	0.01	0.01	0.01	0.01	0.01	0.02	0.03	0.01	0.02	0.05	0.01	0.00	0.02		0.55

\* National Public Rate, NASMHPD Research Institute

## Performance Related Information for Staff &amp; Managers

## 5. Major Incidents by Incident Location/Unit

Data Source: UI DB

Updated as of 06/07/11

Category		Jun-10	Jul-10	Aug-10	Sep-10	Oct-10	Nov-10	Dec-10	Jan-11	Feb-11	Mar-11	Apr-11	May-11	Monthly Average	Total (11mths)	Percent
<b>Total Unusual Incidents</b>		<b>172</b>	<b>211</b>	<b>220</b>	<b>212</b>	<b>207</b>	<b>236</b>	<b>195</b>	<b>214</b>	<b>217</b>	<b>222</b>	<b>206</b>	<b>203</b>	<b>210</b>	<b>2515</b>	
<b>Total Major Incidents*</b>		<b>113</b>	<b>142</b>	<b>143</b>	<b>117</b>	<b>102</b>	<b>181</b>	<b>130</b>	<b>143</b>	<b>146</b>	<b>153</b>	<b>120</b>	<b>123</b>	<b>134</b>	<b>1613</b>	<b>100%</b>
Major Incident Location	1A	5	17	21	14	11	12	10	11	5	11	13	17	12	147	9%
	1B	3	7	7	12	13	12	6	6	9	12	7	24	10	118	7%
	1C	5	1	5	6	7	4	14	8	15	9	7	3	7	84	5%
	1D	19	13	18	19	11	42	32	9	10	14	13	11	18	211	13%
	1E	14	20	24	7	7	12	9	16	33	22	21	19	17	204	13%
	1F	9	14	9	11	9	13	12	14	20	9	9	9	12	138	9%
	1G	7	6	5	13	5	12	9	11	9	13	14	4	9	108	7%
	2A	5	4	7	6	2	4	4	6	3	4	2	3	4	50	3%
	2B	4	8	1	0	4	6	2	4	0	1	3	1	3	34	2%
	2C	3	10	4	3	5	12	11	17	14	18	6	8	9	111	7%
	2D	7	16	6	11	9	22	5	10	12	7	6	6	10	117	7%
	ANXA/B	2	2	5	2	3	4	0	5	0	0	0	0	2	23	1%
	TLC	14	14	12	3	7	10	3	12	9	17	9	7	10	117	7%
	Other	16	10	19	10	9	16	13	14	7	16	10	11	13	151	9%
<b>Total Physical Assault Incidents</b>		<b>30</b>	<b>43</b>	<b>44</b>	<b>32</b>	<b>29</b>	<b>46</b>	<b>40</b>	<b>41</b>	<b>62</b>	<b>50</b>	<b>48</b>	<b>30</b>	<b>41</b>	<b>495</b>	<b>100%</b>
Assault Incident Location	1A	1	3	2	2	1	5	2	4	1	1	3	2	2	27	5%
	1B	0	0	1	2	2	0	0	0	1	2	1	3	1	12	2%
	1C	1	0	3	2	4	2	6	4	3	2	3	0	3	30	6%
	1D	2	5	5	6	1	8	8	3	6	11	8	5	6	68	14%
	1E	4	8	12	3	1	5	3	4	17	8	13	7	7	85	17%
	1F	9	9	7	4	6	4	4	6	13	3	4	2	6	71	14%
	1G	3	3	4	4	2	7	4	6	8	7	5	0	4	53	11%
	2A	0	0	1	1	0	1	2	0	0	1	0	1	1	7	1%
	2B	2	1	0	0	0	2	1	0	0	0	0	1	1	7	1%
	2C	0	1	2	1	1	0	3	5	3	3	0	3	2	22	4%
	2D	3	6	3	5	5	10	4	5	5	4	3	1	5	54	11%
	ANXA/B	0	1	0	0	2	1	0	0	0	0	0	0	0	4	1%
	TLC	5	6	2	2	3	1	3	3	3	7	5	4	4	44	9%
	Other	0	0	2	0	1	0	0	1	2	1	3	1	1	11	2%

## Performance Related Information for Staff &amp; Managers

## 5. Major Incidents by Incident Location/Unit

Data Source: UI DB

Updated as of 06/07/11

Category	Jun-10	Jul-10	Aug-10	Sep-10	Oct-10	Nov-10	Dec-10	Jan-11	Feb-11	Mar-11	Apr-11	May-11	Monthly Average	Total (11mths)	Percent
<b>Total Fall Incidents</b>	<b>15</b>	<b>33</b>	<b>27</b>	<b>18</b>	<b>18</b>	<b>20</b>	<b>22</b>	<b>24</b>	<b>20</b>	<b>23</b>	<b>19</b>	<b>12</b>	<b>21</b>	<b>251</b>	<b>100%</b>
Fall Incident Location															
1A	2	10	11	5	7	5	3	5	2	7	5	1	5	63	25%
1B	0	3	1	2	5	3	2	3	2	1	1	1	2	24	10%
1C	0	0	0	0	0	1	5	0	2	2	1	1	1	12	5%
1D	2	0	2	1	1	0	3	1	1	0	2	2	1	15	6%
1E	1	2	0	0	1	0	1	3	1	0	0	3	1	12	5%
1F	0	1	1	2	0	1	0	0	0	1	0	1	1	7	3%
1G	2	1	0	1	0	0	1	1	0	2	0	0	1	8	3%
2A	1	1	2	1	0	0	1	1	1	1	1	0	1	10	4%
2B	1	3	1	0	2	0	0	0	0	0	1	0	1	8	3%
2C	1	1	0	1	1	4	2	2	5	2	2	1	2	22	9%
2D	0	6	2	0	1	4	0	1	1	0	2	0	1	17	7%
ANXA/B	2	0	1	2	0	0	0	0	0	0	0	0	0	5	2%
TLC	1	5	4	0	0	1	0	3	4	4	3	2	2	27	11%
Other	2	0	2	3	0	1	4	4	1	3	1	0	2	21	8%
<b>Total Injury Incidents</b>	<b>37</b>	<b>46</b>	<b>49</b>	<b>28</b>	<b>23</b>	<b>43</b>	<b>29</b>	<b>30</b>	<b>41</b>	<b>34</b>	<b>27</b>	<b>19</b>	<b>34</b>	<b>406</b>	<b>100%</b>
Injury Incident Location															
1A	1	3	7	4	3	5	2	2	0	3	3	1	3	34	8%
1B	0	2	2	1	3	2		2	2	3	1	6	2	24	6%
1C	0	0	3	0	3	2	3	2	0	1	2	1	1	17	4%
1D	5	6	5	6		12	8	1	2	6	3	2	5	56	14%
1E	4	10	7	3	1	3	2	2	8	2	2	4	4	48	12%
1F	5	5	5	2	2	6	3	3	10	1	2	2	4	46	11%
1G	5	2	3	1	0	3	2	3	5	4	4	0	3	32	8%
2A	1	1	2	1	0	0	3	1	0	1	0	0	1	10	2%
2B	3	3	0	0	1	2	0	1	0	0	0	0	1	10	2%
2C	1	1	2	2	2	1	0	3	3	6	1	0	2	22	5%
2D	2	6	4	2	3	4	2	1	6	1	2	1	3	34	8%
ANXA/B	1	0	1	2	1	0	0	0	0	0	0	0	0	5	1%
TLC	5	4	4	0	2	0	2	3	2	5	6	1	3	34	8%
Other	4	3	4	4	2	3	2	6	3	1	1	1	3	34	8%

\* Not every incident is a major incident. This counts only those major incidents that required extensive investigations from the risk manager.

## Performance Related Information for Staff &amp; Managers

## 6. Demographic Information of Individuals in Care

Data Source: Avatar

Updated as of 06/07/11

Category	Sub-group	Jun-10	Jul-10	Aug-10	Sep-10	Oct-10	Nov-10	Dec-10	Jan-11	Feb-11	Mar-11	Apr-11	May-11	Monthly Average	Percent*
<b>Total Active (on Roll) at End of Month*</b>					<b>311</b>	<b>307</b>	<b>303</b>	<b>301</b>	<b>299</b>	<b>275</b>	<b>279</b>	<b>288</b>	<b>287</b>	<b>294</b>	
<b>Gender</b>	Female				86	80	75	74	71	66	67	69	72	<b>73</b>	<b>24.9%</b>
	Male				225	227	228	227	228	209	212	219	215	<b>221</b>	<b>75.1%</b>
<b>Age</b>	<b>Median Age (Years)</b>				<b>55 yrs</b>	<b>55 yrs</b>	<b>55 yrs</b>	<b>55 yrs</b>	<b>54 yrs</b>	<b>55 yrs</b>	<b>55 yrs</b>	<b>55 yrs</b>	<b>55 yrs</b>	<b>55 yrs</b>	
	<30 years old				23	18	14	15	14	16	15	19	20	<b>17</b>	<b>5.8%</b>
	>=30 and <40 years old				21	22	24	30	31	23	27	29	30	<b>26</b>	<b>8.9%</b>
	>=40 and <50 years old				59	64	62	56	58	47	49	47	47	<b>54</b>	<b>18.5%</b>
	>=50 and <60 years old				119	120	119	118	114	114	108	113	111	<b>115</b>	<b>39.1%</b>
	>=60 years old				89	83	84	82	82	75	80	80	79	<b>82</b>	<b>27.7%</b>
<b>Legal Status of Individuals on Roll at End of Month</b>	Emergency				36			26	19	19	21	22	15	<b>23</b>	<b>7.7%</b>
	Inpatient Commitment				35			33	35	32	31	30	30	<b>32</b>	<b>11.0%</b>
	Outpatient Commitment				31			30	32	29	29	28	30	<b>30</b>	<b>10.1%</b>
	Voluntary				43			46	43	41	40	41	41	<b>42</b>	<b>14.3%</b>
	<b>Civil Sub-total</b>				<b>145</b>			<b>135</b>	<b>129</b>	<b>121</b>	<b>121</b>	<b>121</b>	<b>116</b>	<b>127</b>	<b>43.1%</b>
	DC Exam				52			51	55	42	41	49	51	<b>49</b>	<b>16.5%</b>
	Mentally Incompetent				5			3	3	2	2	4	4	<b>3</b>	<b>1.1%</b>
	NGBRI - DC				91			94	94	93	98	96	96	<b>95</b>	<b>32.1%</b>
	NGBRI - US				10			10	10	9	9	10	12	<b>10</b>	<b>3.4%</b>
	NGBIR - VI				2			2	2	2	2	2	2	<b>2</b>	<b>0.7%</b>
Dual Commitment				1			1	1	1	1	1	1	<b>1</b>	<b>0.3%</b>	
Non-Protesting				1			1	1	1	1	1	1	<b>1</b>	<b>0.3%</b>	
Sexual Psychopath (Miller Act)				4			4	4	4	4	4	4	<b>4</b>	<b>1.4%</b>	
	<b>Forensic Sub-total</b>				<b>166</b>			<b>166</b>	<b>170</b>	<b>154</b>	<b>158</b>	<b>167</b>	<b>171</b>	<b>165</b>	<b>55.9%</b>
<b>Length of Stay</b>	<b>Median LOS (Days)</b>				<b>811 d</b>			<b>903 d</b>	<b>934 d</b>	<b>1091 d</b>	<b>994 d</b>	<b>923 d</b>	<b>949 d</b>	<b>944 d</b>	
	<b>Average LOS (Days)</b>				<b>2967 d</b>			<b>3099 d</b>	<b>3133 d</b>	<b>3282 d</b>	<b>3192 d</b>	<b>3069 d</b>	<b>3093 d</b>	<b>3119 d</b>	
	<30 Days				28			27	32	30	33	34	30	<b>31</b>	<b>10.4%</b>
	>=30 ~ <365 Days				82			79	74	60	62	68	72	<b>71</b>	<b>24.1%</b>
	>= 1 Year & < 2 Years				38			30	29	27	28	32	29	<b>30</b>	<b>10.3%</b>
	>= 2 Years & < 5 Years				44			48	47	45	44	40	43	<b>44</b>	<b>15.1%</b>
	>= 5 Years & < 20 Years				69			66	66	63	64	67	48	<b>63</b>	<b>21.5%</b>
>= 20 Years				50			51	51	50	48	47	65	<b>52</b>	<b>17.6%</b>	

\* Counts the total number of individuals who are on the hospital roll at end of each month. This number serves as denominator to calculate percentage of each group.