

**Government of the District of Columbia
Department of Mental Health (DMH)**

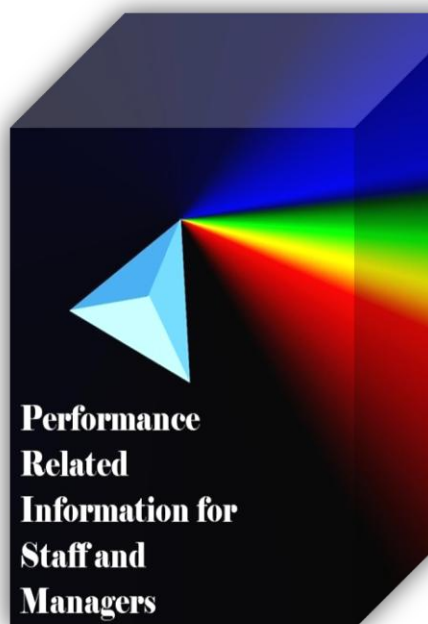


Performance Related Information for Staff and Managers

PRISM

APRIL 2011

Table of Contents

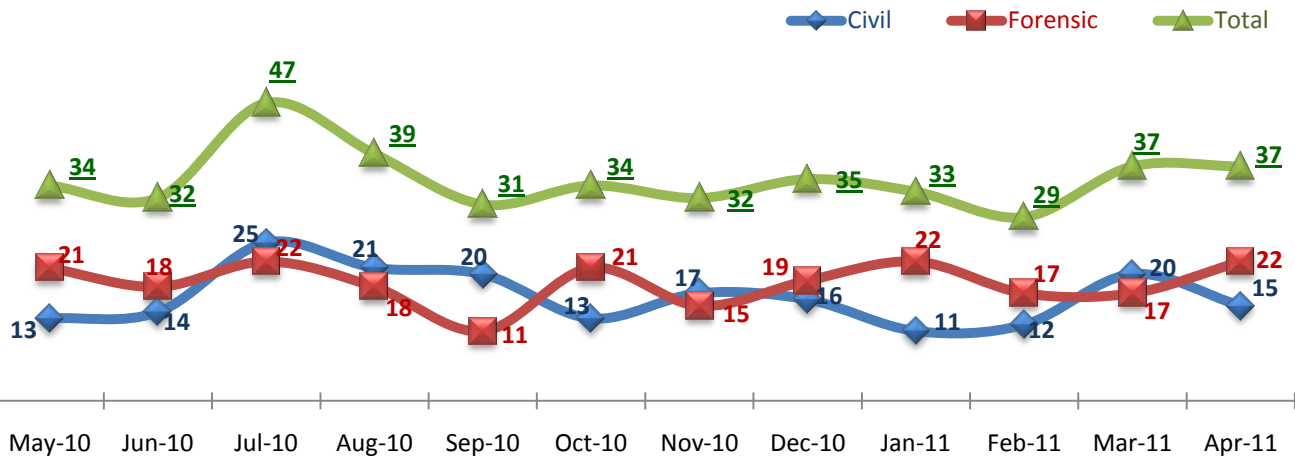


1.	Admissions to SEH	1
2.	Discharges from SEH.....	1
3.	Average Daily Census	1
4.	Transfers	2
5.	30-Day Readmission Rate	2
6.	Unusual Incidents.....	2
7.	Patient-Involved Unusual Incidents.....	3
8.	Eloperments	3
9.	Selected Types of Incidents	3
10.	Patient Injuries	4
11.	Staff Injuries	4
12.	Medication Variances.....	4
13.	Adverse Drug Reactions	5
14.	Percent of Missing Documentation on Med-Administration.....	5
15.	Emergency Involuntary Medications	5
16.	Percent of Patients Restrained or Secluded.....	6
17.	Restraint Hours Rate & Seclusion Hours Rate	6
	<input type="checkbox"/> Appendix 1) Table – Census, Admissions & Discharges	
	<input type="checkbox"/> Appendix 2) Table – Key Performance Indicators	
	<input type="checkbox"/> Appendix 3) Table – Unusual Incident & Medication	
	<input type="checkbox"/> Appendix 4) Table – Restraint & Seclusion	
	<input type="checkbox"/> Appendix 5) Table – Major Incidents by Incident Location/Unit	
	<input type="checkbox"/> Appendix 6) Table – Demographic Information of Individuals in Care	

05/11/2011

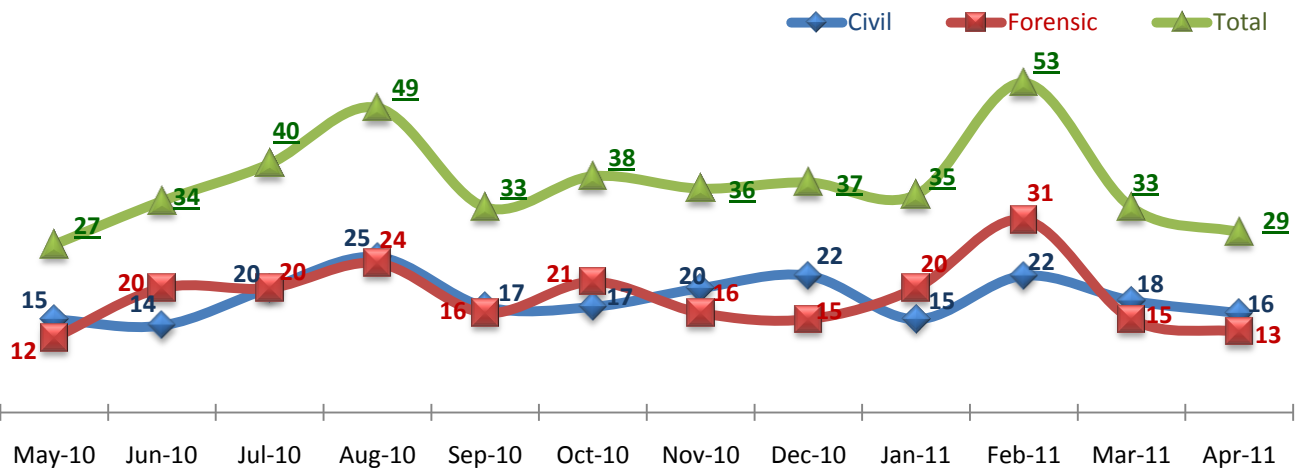
Office of Statistics and Reporting (OSR)

1. Admissions to SEH



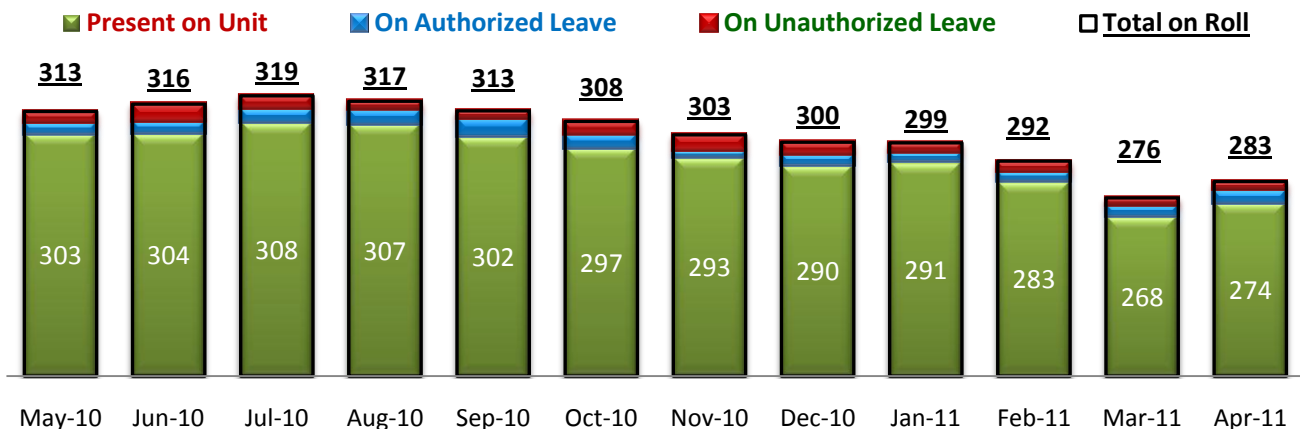
* Number of admissions to SEH inpatient program to SEH, including transfers from outpatient to inpatient program.

2. Discharges from SEH



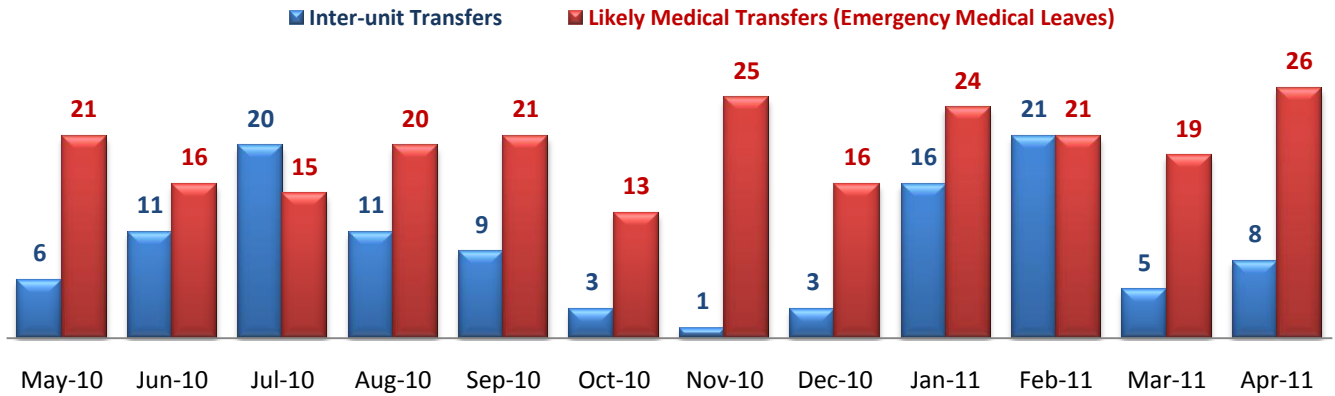
* Number of discharges from SEH inpatient program, including transfers from inpatient to outpatient program.

3. Average Daily Census



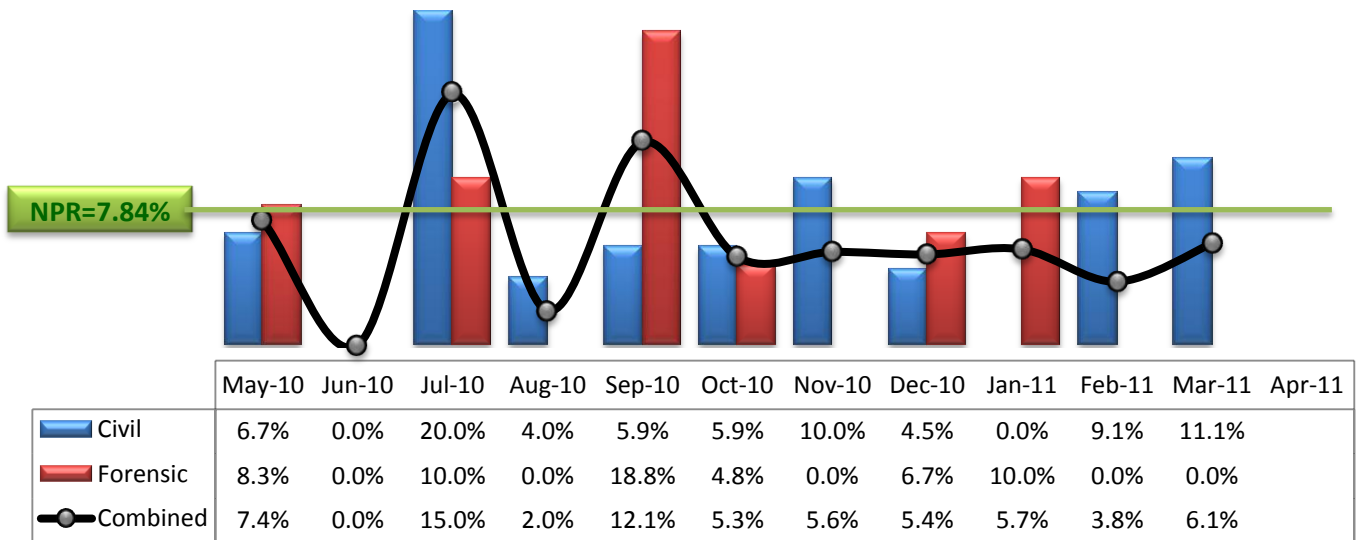
* Data above is the daily average number of individuals counted at 11:59 PM every day during each month.

4. Transfers



* Number of inter-unit transfers that occurred during month and number of emergency medical leaves that were initiated during month.

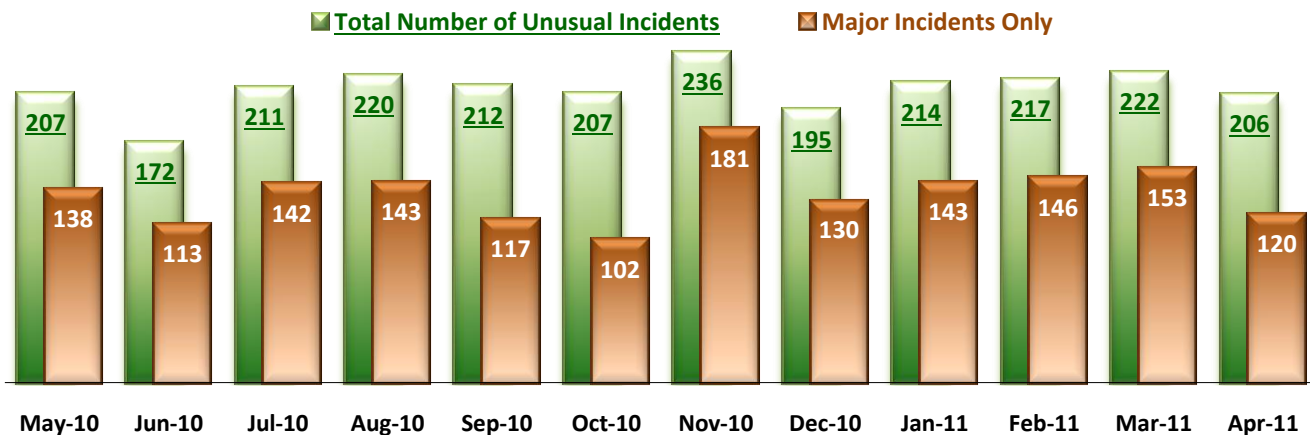
5. 30-Day Readmission Rate



* Percent of discharges that returned to SEH within 30 days of discharges. It does not include those who may have been re-hospitalized to another psychiatric facility. This measure requires 30-day observation following discharge.

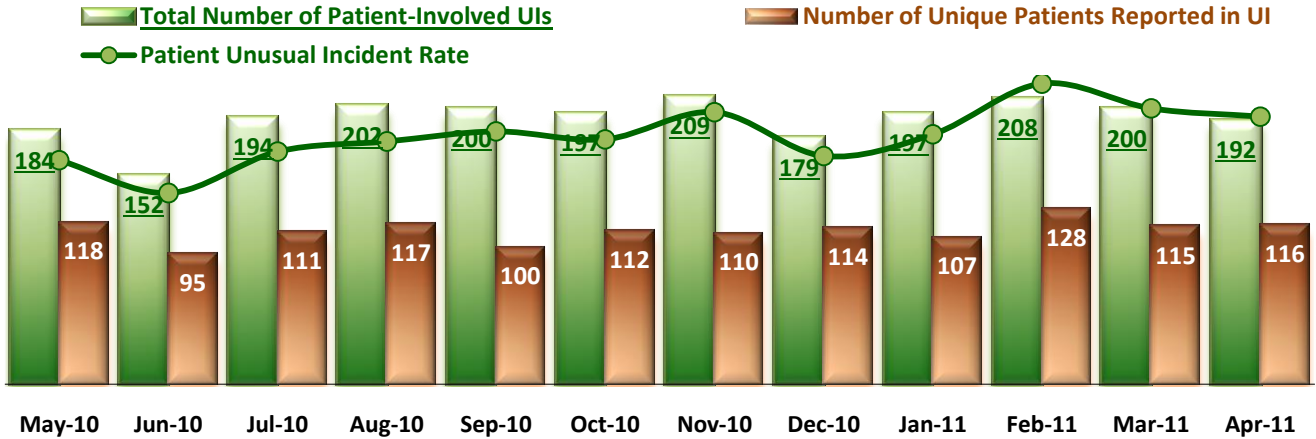
** NPR: National Public Rate as of December 2009 published by NASMHPD Research Institute in May 2010.

6. Unusual Incidents



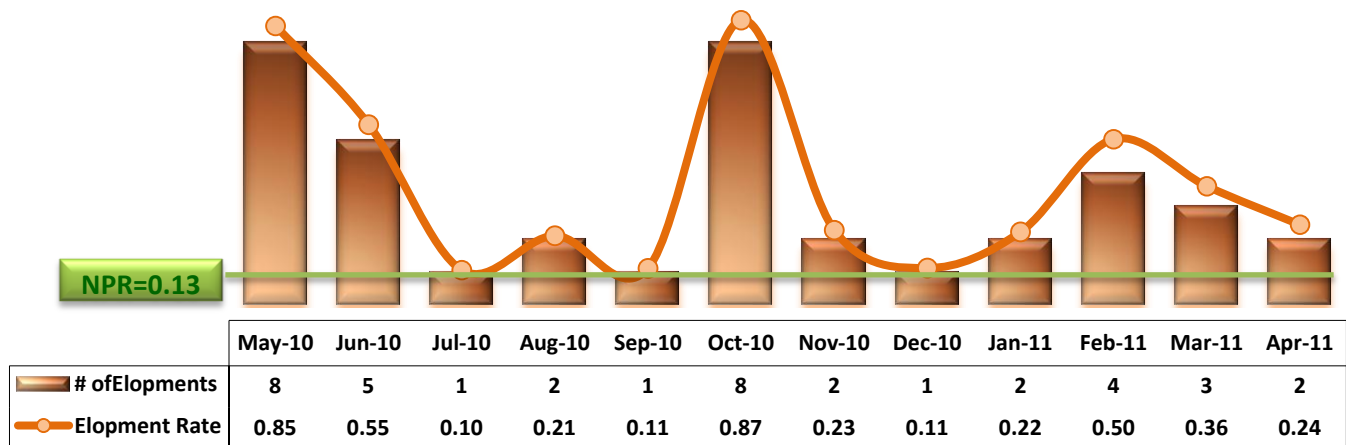
* Numbers above represent all types of the unusual incidents (UIs) that were reported to the Risk Manager by PRISM publication date, including those that did not involve any patients.

7. Patient-Involved Unusual Incidents



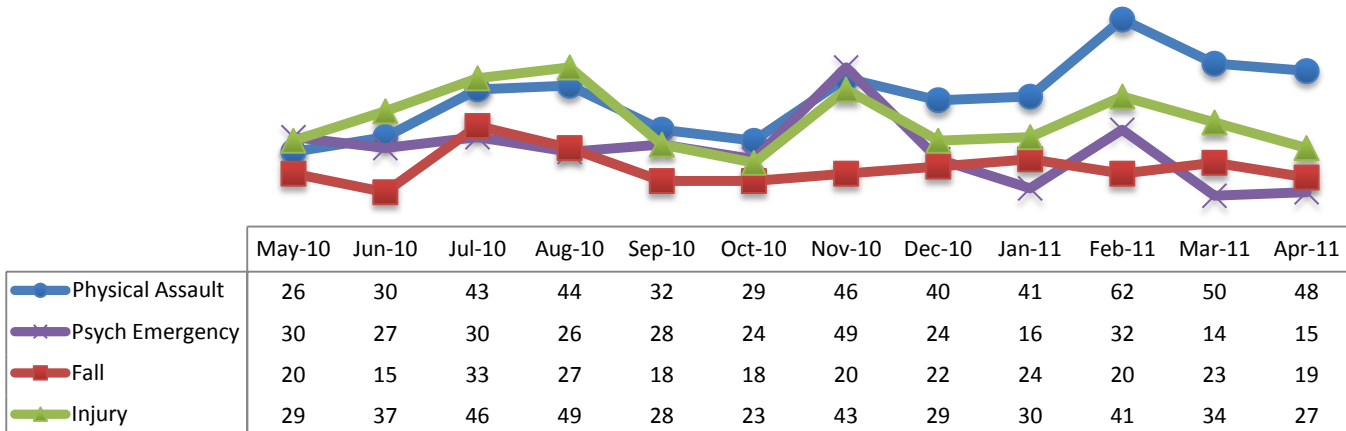
*The total number of patient-involved UIs counts only those incidents that involved at least one or more patients. Some patients may be involved in more than one incident and the number of unique patients does not double count them. The patient UI rate is the number of patient-involved unusual incidents reported for every 1000 inpatient days.

8. Elopements



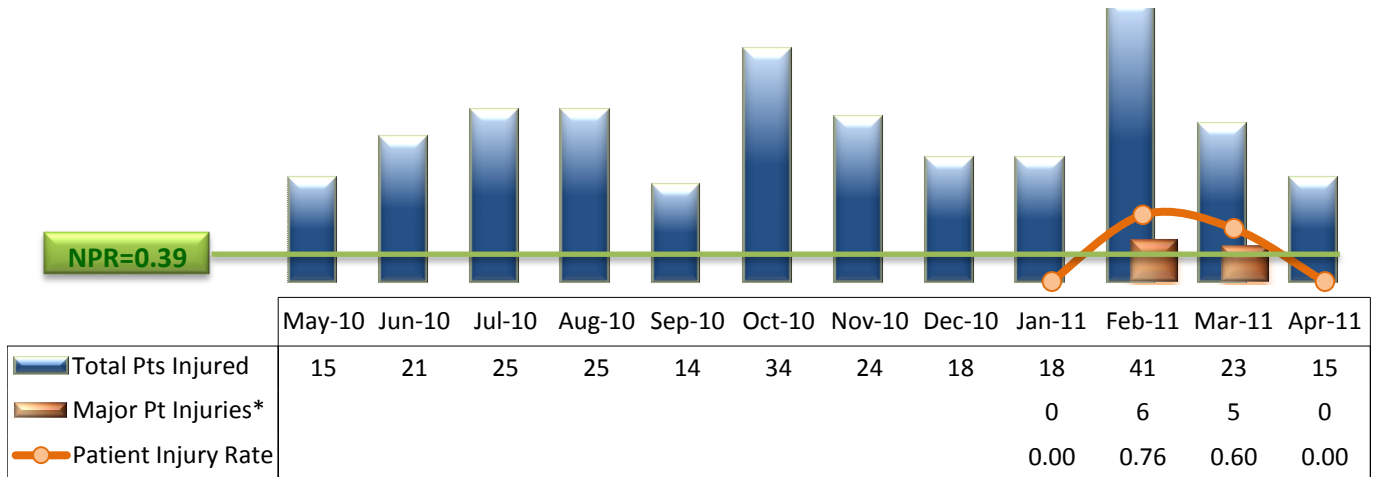
* It counts the total number of unauthorized leaves for any duration that were initiated during month and were recorded in Avatar. The elopement rate is the number of those unauthorized leaves that occurred for every 1000 inpatient days.

9. Selected Types of Incidents



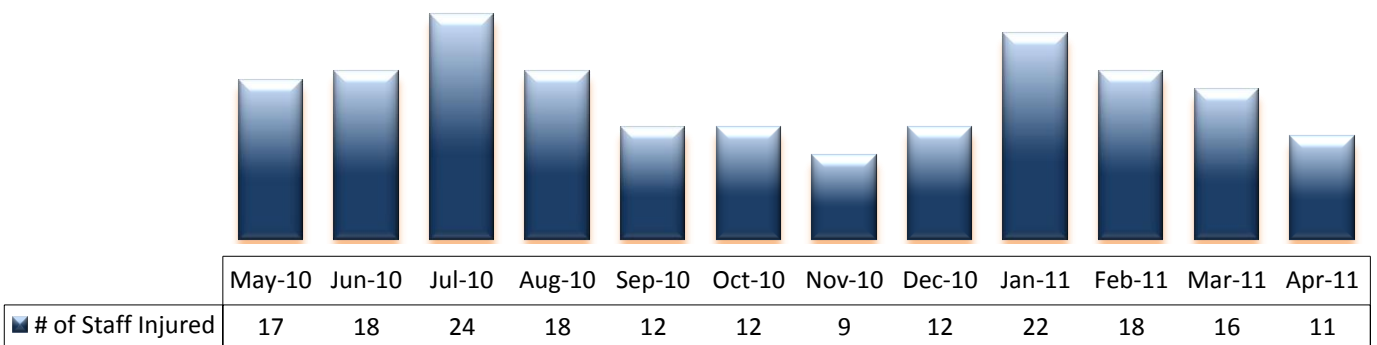
* These are incident types that are frequently reported. Some incidents may be counted in multiple categories. For example, a physical assault incident that accompanied psychiatric emergency and injury is counted under psychiatric emergency and injury as well as under physical assault. Injury is broadly defined to include any type of injuries regardless of the cause or severity level.

10. Patient Injuries



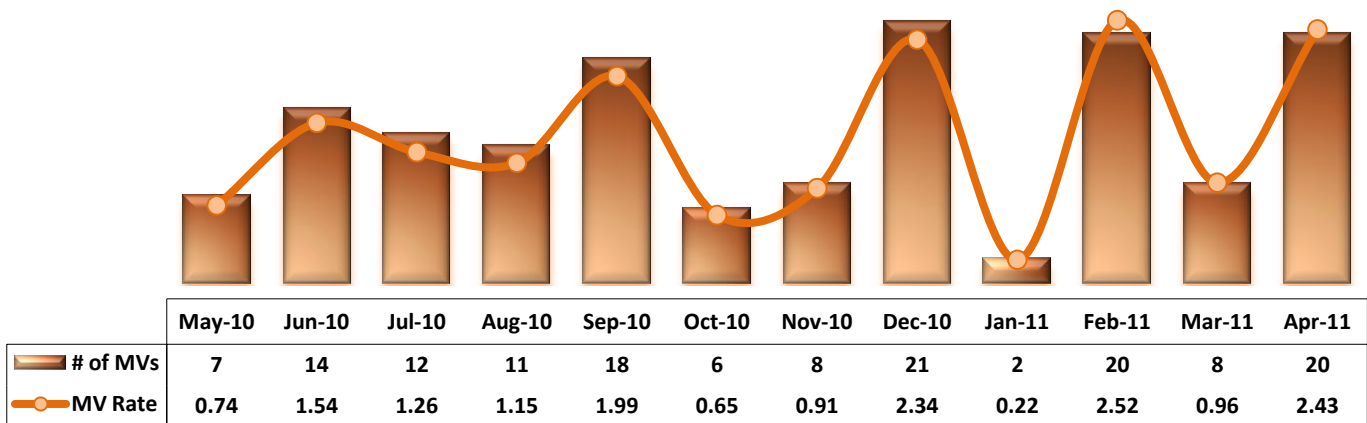
* Injury is broadly defined to include any type of injuries regardless of the cause or severity level. The total number of patients injured represents all of the reported injuries including minor injuries treated with first aid alone. However, the patient injury rate considers only the number of patient injuries that required beyond first-aid level treatment based on the NRI definition and the patient injury rate is the number of 'major' patient injuries per every 1000 inpatient days. The major patient injury data became available in January 2011.

11. Staff Injuries



* Injury is broadly defined to include any type of injuries regardless of the cause or severity level. The total number of staff injured represents all of the reported staff injuries including minor injuries treated with first aid alone.

12. Medication Variances



* MV Rate: Number of medication variance events that occurred for every 1000 inpatient days.

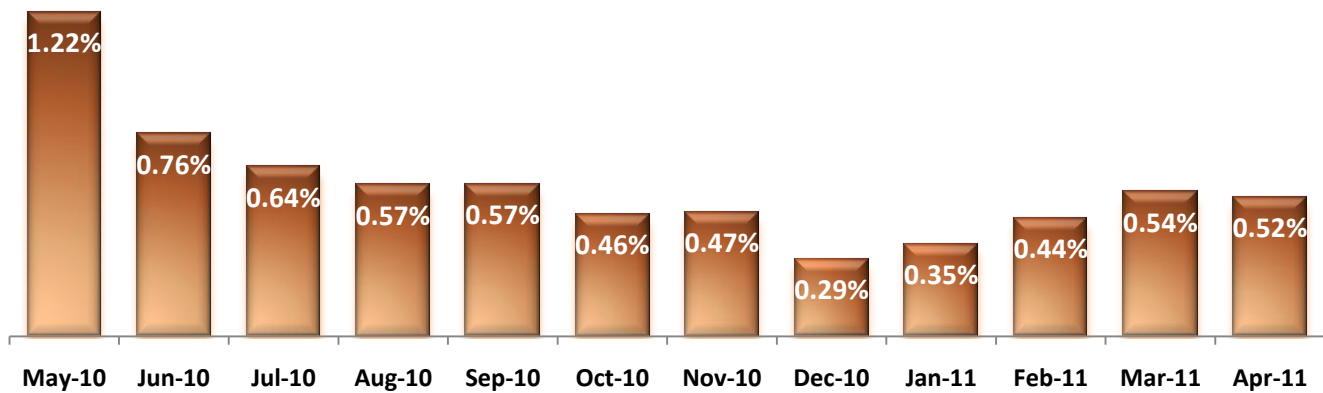
13. Adverse Drug Reactions



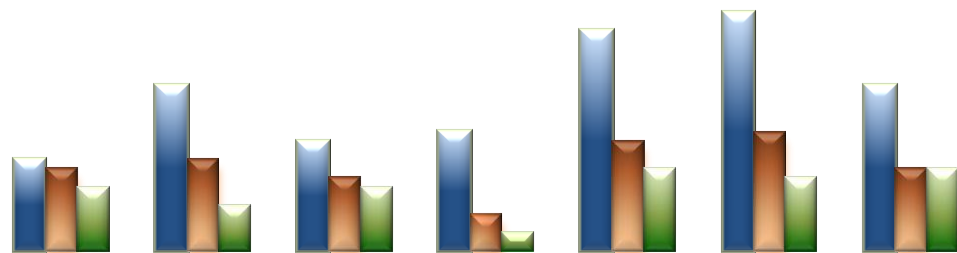
	May-10	Jun-10	Jul-10	Aug-10	Sep-10	Oct-10	Nov-10	Dec-10	Jan-11	Feb-11	Mar-11	Apr-11
# of ADRs	11	8	3	11	5	7	6	7	10	5	11	6
ADR Rate	1.17	0.88	0.31	1.15	0.55	0.76	0.68	0.78	1.11	0.63	1.32	0.73

* ADR Rate: Number of medication variances that occurred for every 1000 inpatient days.

14. Percent of Missing Documentation on Med-Administration



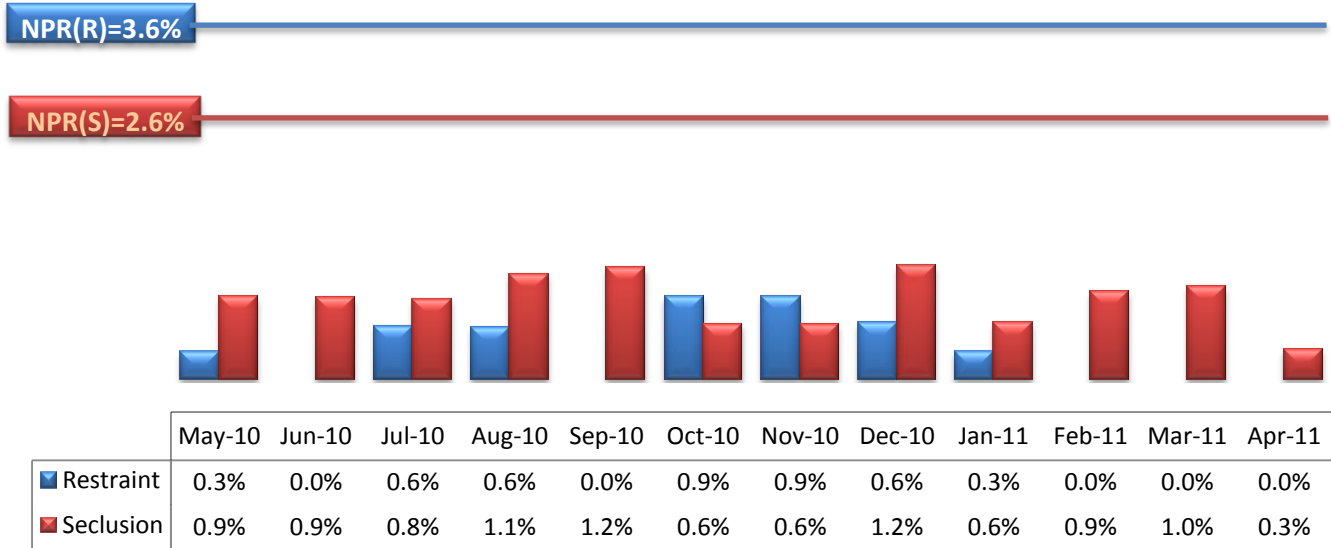
15. Emergency Involuntary Medications



	Oct-10	Nov-10	Dec-10	Jan-11	Feb-11	Mar-11	Apr-11
Total EIM Orders Administered	10	18	12	13	24	26	18
Unique EIM Events	9	10	8	4	12	13	9
Unique Patients Given EIM	7	5	7	2	9	8	9

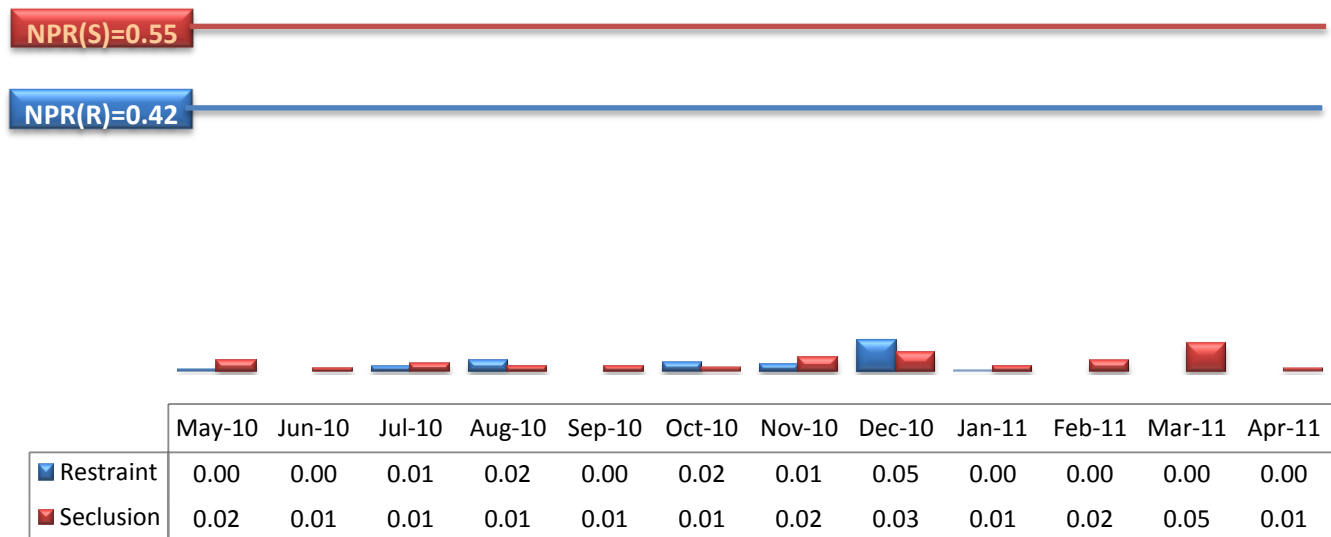
* Some patients may have experienced multiple EIM events during month and some events may have involved multiples doses of medication ordered and administered.

16. Percent of Patients Restrained or Secluded



* Percent of unique patients who were restrained at least once and percent of unique patients who were secluded at least once.

17. Restraint Hours Rate & Seclusion Hours Rate



* Restraint/Seclusion Hours Rate: Number of hours spent in restraint/seclusion for every 1000 inpatient hours.

Performance Related Information for Staff & Managers

1. Census, Admissions, Discharges & Transfers

Data Source: Avatar

Updated as of 05/09/11

Category	Program	May-10	Jun-10	Jul-10	Aug-10	Sep-10	Oct-10	Nov-10	Dec-10	Jan-11	Feb-11	Mar-11	Apr-11	Monthly Average	Total (12mths)	Figure
Admissions	Civil	13	14	25	21	20	13	17	16	11	12	20	15	16	197	Figure 1
	Forensic	21	18	22	18	11	21	15	19	22	17	17	22	19	223	
	Total	34	32	47	39	31	34	32	35	33	29	37	37	35	420	
Discharges	Civil	15	14	20	25	17	17	20	22	15	22	18	16	18	221	Figure 2
	Forensic	12	20	20	24	16	21	16	15	20	31	15	13	19	223	
	Total	27	34	40	49	33	38	36	37	35	53	33	29	37	444	
Net Gain During Month	Civil	-2	0	5	-4	3	-4	-3	-6	-4	-10	2	-1		-24	
	Forensic	9	-2	2	-6	-5	0	-1	4	2	-14	2	9		0	
	Total	7	-2	7	-10	-2	-4	-4	-2	-2	-24	4	8		-24	
All Individuals on Roll at End of Month		318	316	323	313	311	307	303	301	299	275	279	287	303		
a. Present on Unit		309	302	312	304	303	295	292	289	290	268	275	279	293		
b. On AL		3	7	6	6	5	7	6	7	6	3	1	5	5		
c. On UL		6	7	5	3	3	5	5	5	3	4	3	3	4		
All Individuals on Roll: Daily Average during Month		313	316	319	317	313	308	303	300	299	292	276	283	303		Figure 3
a. Present on Unit*		303	304	308	307	302	297	293	290	291	283	268	274	293		
b. On AL		5	5	6	6	8	6	3	5	4	4	5	6	5		
c. On UL		4	7	5	3	3	5	7	5	4	4	3	3	5		
Patient Days*		9406	9105	9553	9532	9063	9213	8799	8983	9031	7925	8307	8217	8928	107134	
Inter-Unit Transfers during Month**		6	11	20	11	9	3	1	3	16	21	5	8	10	114	Figure 4
Medical Leaves Initiated during Month	Emergency	21	16	15	20	21	13	25	16	24	21	19	26	20	237	
	Non-Emer	8	14	10	13	9	12	20	23	26	21	21	35	18	212	
	Total	29	30	25	33	30	25	45	39	50	42	40	61	37	449	
Non-Medical Leaves Initiated during Month		44	83	71	59	82	102	81	93	91	111	67	60	79	944	
UL Initiated during Month		8	5	1	2	1	8	2	1	2	4	3	2	3	39	
Total Unique Patients Served during Month		344	348	355	361	340	343	343	334	334	325	308	311	337		
30 Day Readmission ***	Civil	1	0	4	1	1	1	2	1	0	2	2		1	15	
	Forensic	1	0	2	0	3	1	0	1	2	0	0		1	10	
	Total	2	0	6	1	4	2	2	2	2	2	2		2	25	

* Counts the number of patients who are present on the unit and excludes those on authorized or unauthorized leave at 11:59pm on a given day.

** Any unit changes that occurred on May 3, 2010, when all of the individuals in care moved to new units of the new facility, are not included above.

*** Number of patients returning within 30 days of discharges that occurred during month.

Performance Related Information for Staff & Managers

2. Key Performance Indicators

Data Source: UI DB, ADR DB, Restraint/Seclusion Log, and Avatar

Updated as of 05/09/11

Category	Program	May-10	Jun-10	Jul-10	Aug-10	Sep-10	Oct-10	Nov-10	Dec-10	Jan-11	Feb-11	Mar-11	Apr-11	Monthly Average	NPR* (Dec-09)	Figure
30 Day Readmit (Discharge Cohort)**	Civil	6.7%	0.0%	20.0%	4.0%	5.9%	5.9%	10.0%	4.5%	0.0%	9.1%	11.1%		7.4%		Figure 5
	Forensic	8.3%	0.0%	10.0%	0.0%	18.8%	4.8%	0.0%	6.7%	10.0%	0.0%	0.0%		4.9%		
	Combined	7.4%	0.0%	15.0%	2.0%	12.1%	5.3%	5.6%	5.4%	5.7%	3.8%	6.1%		6.1%	7.8%	
Number of Unusual Incidents		207	172	211	220	212	207	236	195	214	217	222	206	210		Figure 6
Patient Unusual Incident Rate		19.56	16.69	20.31	21.19	22.07	21.38	23.75	19.93	21.81	26.25	24.08	23.37	21.60		Figure 7
Elopement Rate		0.85	0.55	0.10	0.21	0.11	0.87	0.23	0.11	0.22	0.50	0.36	0.24	0.43	0.13	Figure 8
Selected Types of Incidents	Physical Assault	26	30	43	44	32	29	46	40	41	62	50	48	41		Figure 9
	Psych Emergency	30	27	30	26	28	24	49	24	16	32	14	15	26		
	Fall	20	15	33	27	18	18	20	22	24	20	23	19	22		
	Injury***	29	37	46	49	28	23	43	29	30	41	34	27	35		
Patient Injury Rate***										0.00	0.76	0.60	0.00	0.31	0.39	Figure 10
Patients with Major Injuries***										0	6	5	0	3		
Total Patients Injured***		15	21	25	25	14	34	24	18	18	41	23	15	23		
Total Staff Injured***		17	18	24	18	12	12	9	12	22	18	16	11	16		Figure 11
Medication Variance Rate		0.74	1.54	1.26	1.15	1.99	0.65	0.91	2.34	0.22	2.52	0.96	2.43	1.37		Figure 12
Adverse Drug Reaction Rate		1.17	0.88	0.31	1.15	0.55	0.76	0.68	0.78	1.11	0.63	1.32	0.73	0.84		Figure 13
Percent of Missing Documentation of Medication Administration		1.22%	0.76%	0.64%	0.57%	0.57%	0.46%	0.47%	0.29%	0.35%	0.44%	0.54%	0.52%	0.57%		Figure 14
Emergency STAT Med Orders Administered Involuntarily (EIM)								18	12	13	24	26	18	17		Figure 15
Unique EIM Events								10	8	4	12	13	9	9		
Unique Patients given EIM								5	7	2	9	8	9	7		
Percent of Patients Restrained		0.3%	0.0%	0.6%	0.6%	0.0%	0.9%	0.9%	0.6%	0.3%	0.0%	0.0%	0.0%	0.3%	3.6%	Figure 16
Percent of Patients Secluded		0.9%	0.9%	0.8%	1.1%	1.2%	0.6%	0.6%	1.2%	0.6%	0.9%	1.0%	0.3%	0.8%	2.6%	
Restraint Hours Rate		0.00	0.00	0.01	0.02	0.00	0.02	0.01	0.05	0.00	0.00	0.00	0.00	0.01	0.42	Figure 17
Seclusion Hours Rate		0.02	0.01	0.01	0.01	0.01	0.01	0.02	0.03	0.01	0.02	0.05	0.01	0.02	0.55	

* National Public Rate, NASMHPD Research Institute

** Percentage of patients returning within 30 days of discharges that occurred during month

Injury is broadly defined to include any type of injuries regardless of the cause or severity level. The total number of patients or staff injured represents all of the reported injuries including minor injuries treated with first aid alone. However, the patient injury rate considers only the number of patient injuries that required beyond first-aid level treatment based on the NRI definition and the patient injury rate is the number of 'major' patient injuries per every 1000 inpatient days. The patient major injury data became available in January 2011.

Performance Related Information for Staff & Managers

3. Unusual Incident & Medication

Data Source: UI DB, ADR DB, and Avatar

Updated as of 05/09/11

Category	May-10	Jun-10	Jul-10	Aug-10	Sep-10	Oct-10	Nov-10	Dec-10	Jan-11	Feb-11	Mar-11	Apr-11	Monthly Average	Total (12mths)	NPR* (Dec-09)
Total Unusual Incidents**	207	172	211	220	212	207	236	195	214	217	222	206	210		
Total Major Unusual Incidents	138	113	142	143	117	102	181	130	143	146	153	120	136		
Patient Involved UI Only**	184	152	194	202	200	197	209	179	197	208	200	192	193		
<i>Patient UI Rate</i>	<i>19.56</i>	<i>16.69</i>	<i>20.31</i>	<i>21.19</i>	<i>22.07</i>	<i>21.38</i>	<i>23.75</i>	<i>19.93</i>	<i>21.81</i>	<i>26.25</i>	<i>24.08</i>	<i>23.37</i>	<i>21.60</i>		
Unique Patients Involved in UI**	118	95	111	117	100	112	110	114	107	128	115	116	112		
Selected Types of Incidents	Physical Assault	26	30	43	44	32	29	46	40	41	62	50	48	41	
	Psych Emergency	30	27	30	26	28	24	49	24	16	32	14	15	26	
	Fall	20	15	33	27	18	18	20	22	24	20	23	19	22	
	Injury	29	37	46	49	28	23	43	29	30	41	34	27	35	
Total Patients Injured***	15	21	25	25	14	34	24	18	18	41	23	15	23	273	
Patients with Major Injuries***									0	6	5	0	3	11	
<i>Patient Injury Rate***</i>									<i>0.00</i>	<i>0.76</i>	<i>0.60</i>	<i>0.00</i>	<i>0.31</i>		<i>0.39</i>
Total Staff Injured**	17	18	24	18	12	12	9	12	22	18	16	11	16		
Total UL Incident Reports	7	5	2	3	1	8	6	1	4	3	4	2	4	46	
Total ULs Documented in Avatar	8	5	1	2	1	8	2	1	2	4	3	2	3		
<i>Elopement Rate</i>	<i>0.85</i>	<i>0.55</i>	<i>0.10</i>	<i>0.21</i>	<i>0.11</i>	<i>0.87</i>	<i>0.23</i>	<i>0.11</i>	<i>0.22</i>	<i>0.50</i>	<i>0.36</i>	<i>0.24</i>	<i>0.43</i>		<i>0.13</i>
Total Medication Variance (MV) Incidents Reported **	7	14	12	11	18	6	8	21	2	20	8	20	12	147	
<i>MV Rate</i>	<i>0.74</i>	<i>1.54</i>	<i>1.26</i>	<i>1.15</i>	<i>1.99</i>	<i>0.65</i>	<i>0.91</i>	<i>2.34</i>	<i>0.22</i>	<i>2.52</i>	<i>0.96</i>	<i>2.43</i>	<i>1.37</i>		
Total Adverse Drug Reactions (ADR) Reported	11	8	3	11	5	7	6	7	10	5	11	6	8	90	
<i>ADR Rate</i>	<i>1.17</i>	<i>0.88</i>	<i>0.31</i>	<i>1.15</i>	<i>0.55</i>	<i>0.76</i>	<i>0.68</i>	<i>0.78</i>	<i>1.11</i>	<i>0.63</i>	<i>1.32</i>	<i>0.73</i>	<i>0.84</i>		
Total Routine Medication Administrations Scheduled	112575	109765	114363	115810	109712	111397	104863	107095	105329	93288	99376	97031		1280604	
Total Missing Documentations	1370	835	729	659	626	512	490	309	365	413	540	507		7355	
<i>Percent of Missing Documentation</i>	<i>1.22%</i>	<i>0.76%</i>	<i>0.64%</i>	<i>0.57%</i>	<i>0.57%</i>	<i>0.46%</i>	<i>0.47%</i>	<i>0.29%</i>	<i>0.35%</i>	<i>0.44%</i>	<i>0.54%</i>	<i>0.52%</i>		<i>0.57%</i>	
Total Patients with >=3 STATs	41	30	33	40	28	31	29	25	44	53	33	53	37		
Emergency STAT Med Orders Administered Involuntarily (EIM)						10	18	12	13	24	26	18	17		
Unique EIM Events						9	10	8	4	12	13	9	9		
Unique Patients given EIM						7	5	7	2	9	8	9	7		

* National Public Rate, NASMHPD Research Institute

** Numbers may change if any additional UI report is made after the data run date from UI database (around the 15th of the following month).

Performance Related Information for Staff & Managers

4. Restraint & Seclusion

Data Source: Restraint/Seclusion Log and UI DB (for # of total events and patients) and Avatar (for patient days/hours)

Updated as of 05/09/11

Category	May-10	Jun-10	Jul-10	Aug-10	Sep-10	Oct-10	Nov-10	Dec-10	Jan-11	Feb-11	Mar-11	Apr-11	Monthly Average	Total (12mths)	NPR* (Dec-09)
Number of Restraint Events	1	0	2	3	0	3	4	8	1	0	0	0	1.8	22	
Number of Unique Patients Restrained	1	0	2	2	0	3	3	2	1	0	0	0	1.2		
Percentage of Patients Restrained	0.3%	0.0%	0.6%	0.6%	0.0%	0.9%	0.9%	0.6%	0.3%	0.0%	0.0%	0.0%	0.3%		3.6%
Total Restraint Hours (h:mm)	0:45	0:00	2:05	4:15	0:00	3:20	2:46	11:08	0:20	0:00	0:00	0:00	2:03	24:39	
Restraint Hours Rate	0.00	0.00	0.01	0.02	0.00	0.02	0.01	0.05	0.00	0.00	0.00	0.00	0.01		0.42
Number of Seclusion Events	5	4	3	4	5	2	2	2	3	3	6	1	3.3	40	
Number of Unique Patients Secluded	3	3	3	4	4	2	2	4	2	3	3	1	2.8		
Percentage of Patients Secluded	0.9%	0.9%	0.8%	1.1%	1.2%	0.6%	0.6%	1.2%	0.6%	0.9%	1.0%	0.3%	0.8%		2.6%
Total Seclusion Hours (h:mm)	4:15	1:22	3:05	2:10	2:10	1:20	4:57	6:40	2:10	3:25	9:15	1:00	3:29	41:49	
Seclusion Hours Rate	0.02	0.01	0.01	0.01	0.01	0.01	0.02	0.03	0.01	0.02	0.05	0.01	0.02		0.55

* National Public Rate, NASMHPD Research Institute

Performance Related Information for Staff & Managers

5. Major Incidents by Incident Location/Unit

Data Source: UI DB

Updated as of 05/09/11

Category		May-10	Jun-10	Jul-10	Aug-10	Sep-10	Oct-10	Nov-10	Dec-10	Jan-11	Feb-11	Mar-11	Apr-11	Monthly Average	Total (11mths)	Percent
Total Unusual Incidents		207	172	211	220	212	207	236	195	214	217	222	206	210	2519	
Total Major Incidents*		138	113	142	143	117	102	181	130	143	146	153	120	136	1628	100%
Major Incident Location	1A	13	5	17	21	14	11	12	10	11	5	11	13	12	143	9%
	1B	9	3	7	7	12	13	12	6	6	9	12	7	9	103	6%
	1C	5	5	1	5	6	7	4	14	8	15	9	7	7	86	5%
	1D	20	19	13	18	19	11	42	32	9	10	14	13	18	220	14%
	1E	6	14	20	24	7	7	12	9	16	33	22	21	16	191	12%
	1F	17	9	14	9	11	9	13	12	14	20	9	9	12	146	9%
	1G	6	7	6	5	13	5	12	9	11	9	13	14	9	110	7%
	2A	7	5	4	7	6	2	4	4	6	3	4	2	5	54	3%
	2B	1	4	8	1	0	4	6	2	4	0	1	3	3	34	2%
	2C	4	3	10	4	3	5	12	11	17	14	18	6	9	107	7%
	2D	9	7	16	6	11	9	22	5	10	12	7	6	10	120	7%
	ANXA/B	9	2	2	5	2	3	4	0	5	0	0	0	3	32	2%
	TLC	11	14	14	12	3	7	10	3	12	9	17	9	10	121	7%
	Other	21	16	10	19	10	9	16	13	14	7	16	10	13	161	10%
Total Physical Assault Incidents		26	30	43	44	32	29	46	40	41	62	50	48	41	491	100%
Assault Incident Location	1A	1	1	3	2	2	1	5	2	4	1	1	3	2	26	5%
	1B	2	0	0	1	2	2	0	0	0	1	2	1	1	11	2%
	1C	2	1	0	3	2	4	2	6	4	3	2	3	3	32	7%
	1D	6	2	5	5	6	1	8	8	3	6	11	8	6	69	14%
	1E	1	4	8	12	3	1	5	3	4	17	8	13	7	79	16%
	1F	4	9	9	7	4	6	4	4	6	13	3	4	6	73	15%
	1G	1	3	3	4	4	2	7	4	6	8	7	5	5	54	11%
	2A	1	0	0	1	1	0	1	2	0	0	1	0	1	7	1%
	2B	0	2	1	0	0	0	2	1	0	0	0	0	1	6	1%
	2C	1	0	1	2	1	1	0	3	5	3	3	0	2	20	4%
	2D	3	3	6	3	5	5	10	4	5	5	4	3	5	56	11%
	ANXA/B	0	0	1	0	0	2	1	0	0	0	0	0	0	4	1%
	TLC	1	5	6	2	2	3	1	3	3	3	7	5	3	41	8%
	Other	3	0	0	2	0	1	0	0	1	2	1	3	1	13	3%

Performance Related Information for Staff & Managers

5. Major Incidents by Incident Location/Unit

Data Source: UI DB

Updated as of 05/09/11

Category	May-10	Jun-10	Jul-10	Aug-10	Sep-10	Oct-10	Nov-10	Dec-10	Jan-11	Feb-11	Mar-11	Apr-11	Monthly Average	Total (11mths)	Percent	
Total Fall Incidents	20	15	33	27	18	18	20	22	24	20	23	19	22	259	100%	
Fall Incident Location	1A	6	2	10	11	5	7	5	3	5	2	7	5	6	68	26%
	1B	3	0	3	1	2	5	3	2	3	2	1	1	2	26	10%
	1C	0	0	0	0	0	0	1	5	0	2	2	1	1	11	4%
	1D	0	2	0	2	1	1	0	3	1	1	0	2	1	13	5%
	1E	1	1	2	0	0	1	0	1	3	1	0	0	1	10	4%
	1F	2	0	1	1	2	0	1	0	0	0	1	0	1	8	3%
	1G	0	2	1	0	1	0	0	1	1	0	2	0	1	8	3%
	2A	0	1	1	2	1	0	0	1	1	1	1	1	1	10	4%
	2B	0	1	3	1	0	2	0	0	0	0	0	1	1	8	3%
	2C	0	1	1	0	1	1	4	2	2	5	2	2	2	21	8%
	2D	2	0	6	2	0	1	4	0	1	1	0	2	2	19	7%
	ANXA/B	0	2	0	1	2	0	0	0	0	0	0	0	0	5	2%
	TLC	2	1	5	4	0	0	1	0	3	4	4	3	2	27	10%
	Other	4	2	0	2	3	0	1	4	4	1	3	1	2	25	10%
Total Injury Incidents	29	37	46	49	28	23	43	29	30	41	34	27	35	416	100%	
Injury Incident Location	1A	4	1	3	7	4	3	5	2	2	0	3	3	3	37	9%
	1B	2	0	2	2	1	3	2		2	2	3	1	2	20	5%
	1C	0	0	0	3	0	3	2	3	2	0	1	2	1	16	4%
	1D	3	5	6	5	6		12	8	1	2	6	3	5	57	14%
	1E	1	4	10	7	3	1	3	2	2	8	2	2	4	45	11%
	1F	4	5	5	5	2	2	6	3	3	10	1	2	4	48	12%
	1G	1	5	2	3	1	0	3	2	3	5	4	4	3	33	8%
	2A	0	1	1	2	1	0	0	3	1	0	1	0	1	10	2%
	2B	1	3	3	0	0	1	2	0	1	0	0	0	1	11	3%
	2C	1	1	1	2	2	2	1	0	3	3	6	1	2	23	6%
	2D	2	2	6	4	2	3	4	2	1	6	1	2	3	35	8%
	ANXA/B	0	1	0	1	2	1	0	0	0	0	0	0	0	5	1%
	TLC	1	5	4	4	0	2	0	2	3	2	5	6	3	34	8%
	Other	9	4	3	4	4	2	3	2	6	3	1	1	4	42	10%

* Not every incident is a major incident. This counts only those major incidents that required extensive investigations from the risk manager.

Performance Related Information for Staff & Managers

6. Demographic Information of Individuals in Care

Data Source: Avatar

Updated as of 05/09/11

Category	Sub-group	May-10	Jun-10	Jul-10	Aug-10	Sep-10	Oct-10	Nov-10	Dec-10	Jan-11	Feb-11	Mar-11	Apr-11	Monthly Average	Percent*
Total Active (on Roll) at End of Month*						311	307	303	301	299	275	279	287	295	
Gender	Female					86	80	75	74	71	66	67	68	73	24.9%
	Male					225	227	228	227	228	209	212	219	222	75.1%
Age	Median Age (Years)					55 yrs	55 yrs	55 yrs	55 yrs	54 yrs	55 yrs	55 yrs	55 yrs	55 yrs	
	<30 years old					23	18	14	15	14	16	15	19	17	5.7%
	>=30 and <40 years old					21	22	24	30	31	23	27	28	26	8.7%
	>=40 and <50 years old					59	64	62	56	58	47	49	47	55	18.7%
	>=50 and <60 years old					119	120	119	118	114	114	108	113	116	39.2%
	>=60 years old					89	83	84	82	82	75	80	80	82	27.7%
Legal Status of Individuals on Roll at End of Month	Emergency					36			26	19	19	21	22	24	8.1%
	Inpatient Commitment					35			33	35	32	31	30	33	11.1%
	Outpatient Commitment					31			30	32	29	29	28	30	10.1%
	Voluntary					43			46	43	41	40	40	42	14.3%
	Civil Sub-total					145			135	129	121	121	120	129	43.5%
	DC Exam					52			51	55	42	41	49	48	16.4%
	Mentally Incompetent					5			3	3	2	2	4	3	1.1%
	NGBRI - DC					91			94	94	93	98	96	94	32.0%
	NGBRI - US					10			10	10	9	9	10	10	3.3%
	NGBIR - VI					2			2	2	2	2	2	2	0.7%
Dual Commitment					1			1	1	1	1	1	1	0.3%	
Non-Protesting					1			1	1	1	1	1	1	0.3%	
Sexual Psychopath (Miller Act)					4			4	4	4	4	4	4	1.4%	
	Forensic Sub-total					166			166	170	154	158	167	164	55.4%
Length of Stay	Median LOS (Days)					811 d			903 d	934 d	1091 d	994 d	927 d	943 d	
	Average LOS (Days)					2967 d			3099 d	3133 d	3282 d	3192 d	3079 d	3125 d	
	<30 Days					28			27	32	30	33	33	31	10.3%
	>=30 ~ <365 Days					82			79	74	60	62	68	71	24.0%
	>= 1 Year & < 2 Years					38			30	29	27	28	32	31	10.4%
	>= 2 Years & < 5 Years					44			48	47	45	44	40	45	15.1%
	>= 5 Years & < 20 Years					69			66	66	63	64	67	66	22.3%
>= 20 Years					50			51	51	50	48	47	50	16.8%	

* Counts the total number of individuals who are on the hospital roll at end of each month. This number serves as denominator to calculate percentage of each group.