

**Government of the District of Columbia
Department of Mental Health (DMH)**



Performance Related Information for Staff and Managers

PRISM

MARCH 2011

Table of Contents

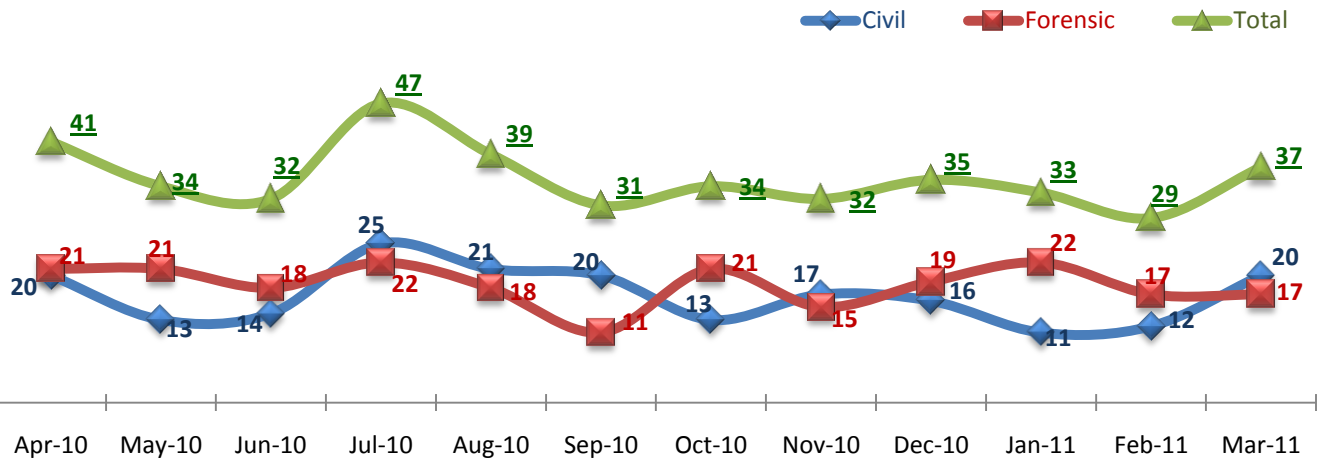


1.	Admissions to SEH	1
2.	Discharges from SEH.....	1
3.	Average Daily Census	1
4.	Transfers	2
5.	30-Day Readmission Rate	2
6.	Unusual Incidents.....	2
7.	Patient-Involved Unusual Incidents.....	3
8.	Eloperments	3
9.	Selected Types of Incidents	3
10.	Patient Injuries.....	4
11.	Staff Injuries	4
12.	Medication Variances.....	4
13.	Adverse Drug Reactions	5
14.	Percent of Missing Documentation on Med-Administration.....	5
15.	Percent of Patients Restrained or Secluded.....	5
16.	Restraint Hours Rate & Seclusion Hours Rate	6
	<input type="checkbox"/> Appendix 1) Table – Census, Admissions & Discharges	
	<input type="checkbox"/> Appendix 2) Table – Key Performance Indicators	
	<input type="checkbox"/> Appendix 3) Table – Unusual Incident & Medication	
	<input type="checkbox"/> Appendix 4) Table – Restraint & Seclusion	
	<input type="checkbox"/> Appendix 5) Table – Major Incidents by Incident Location/Unit	
	<input type="checkbox"/> Appendix 6) Table – Demographic Information of Individuals in Care	

04/11/2011

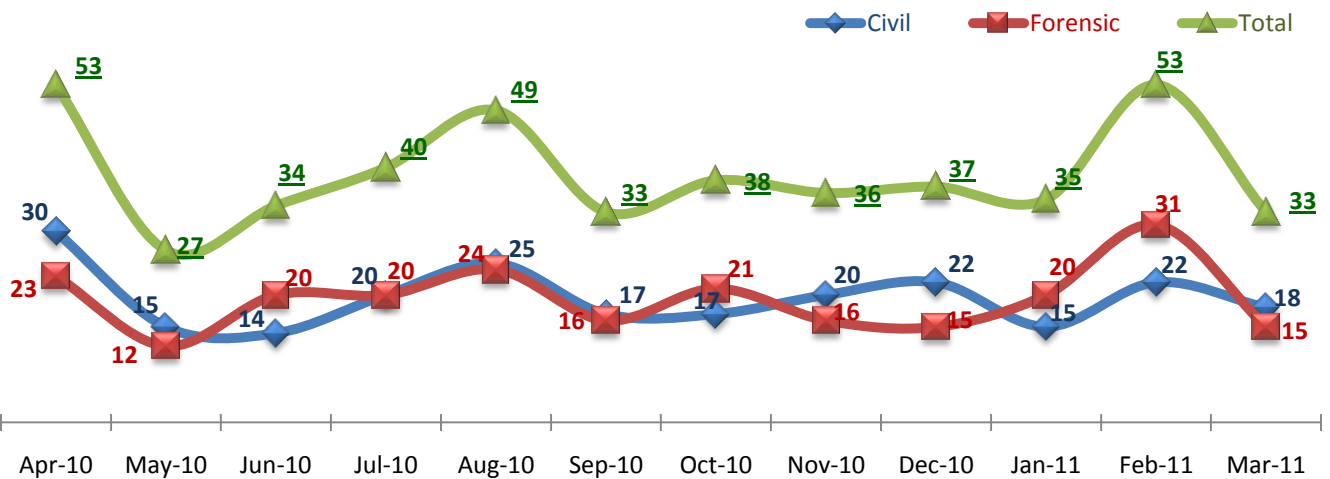
Office of Statistics and Reporting (OSR)

1. Admissions to SEH



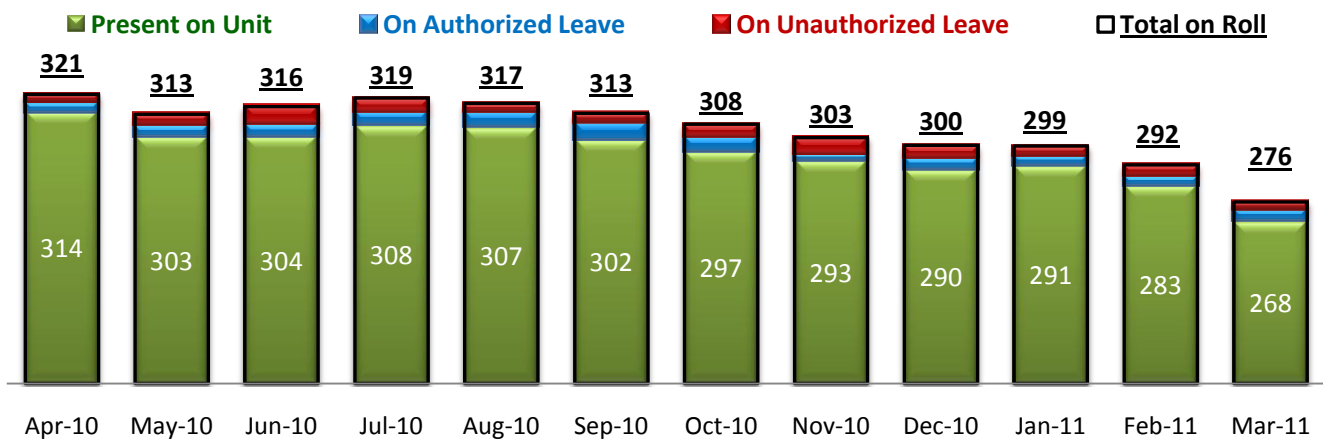
* Number of admissions to SEH inpatient program to SEH, including transfers from outpatient to inpatient program.

2. Discharges from SEH



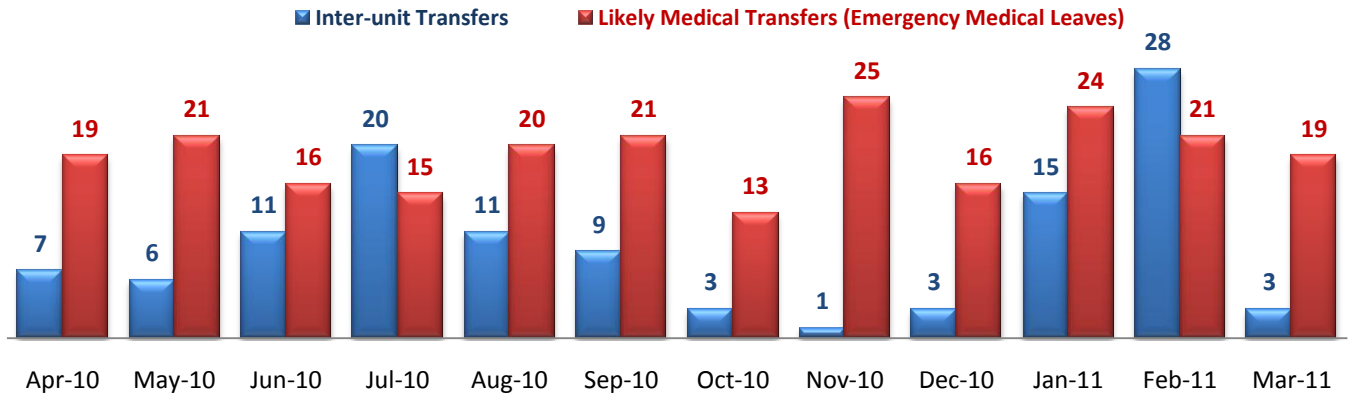
* Number of discharges from SEH inpatient program, including transfers from inpatient to outpatient program.

3. Average Daily Census



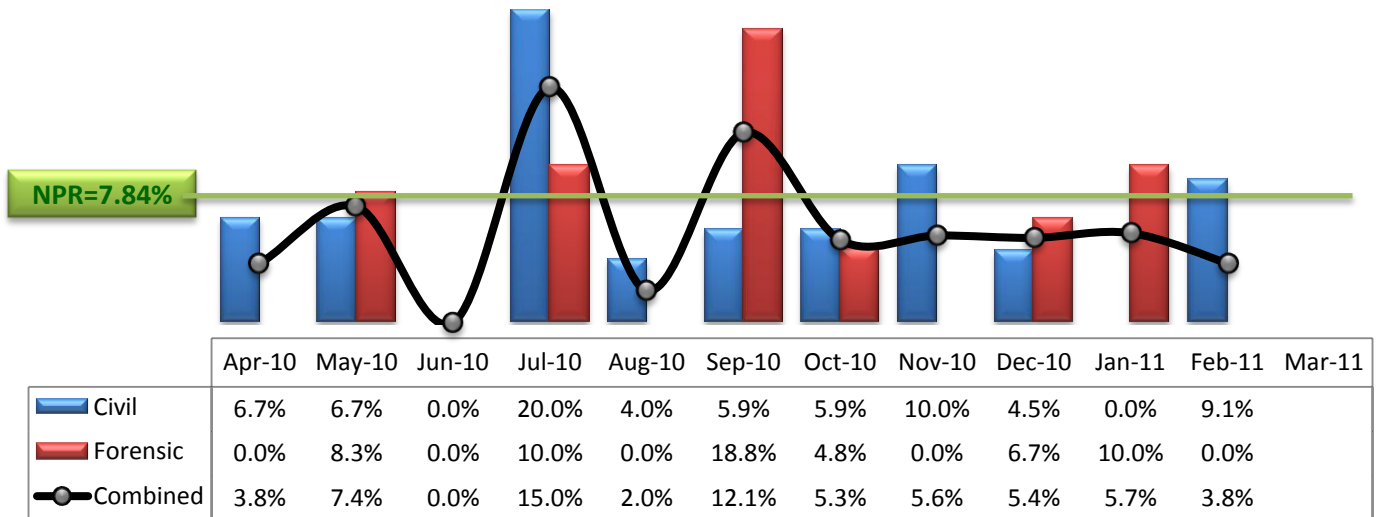
* Data above is the daily average number of individuals counted at 11:59 PM every day during each month.

4. Transfers



* Number of inter-unit transfers that occurred during month and number of emergency medical leaves that were initiated during month.

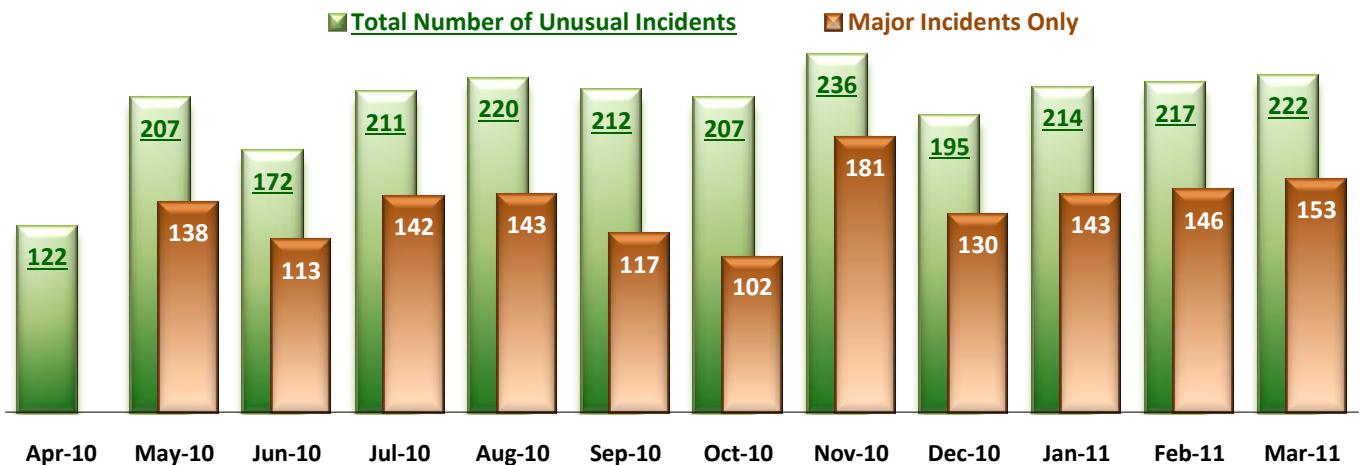
5. 30-Day Readmission Rate



* Percent of discharges that returned to SEH within 30 days of discharges. It does not include those who may have been re-hospitalized to another psychiatric facility. This measure requires 30-day observation following discharge.

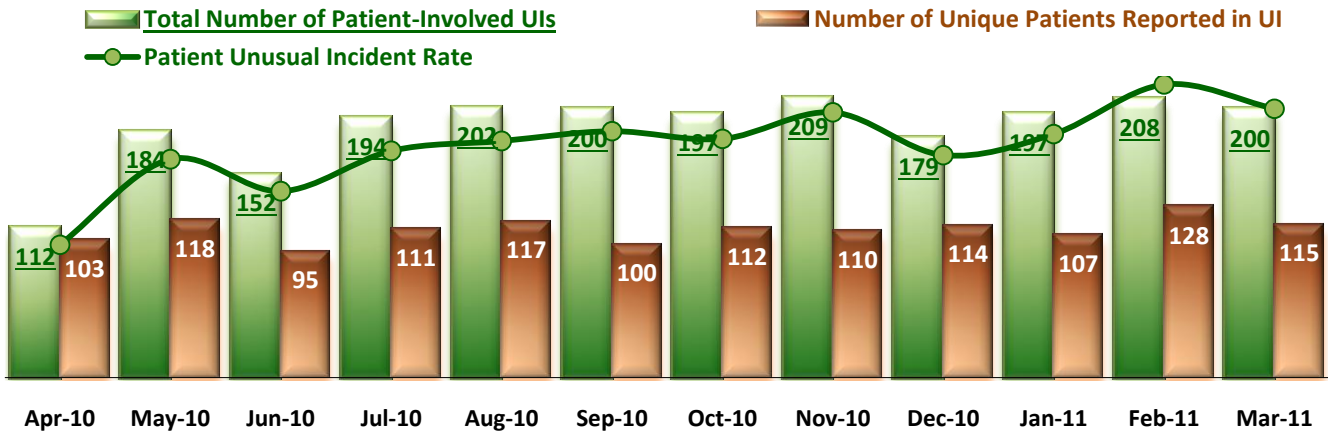
** NPR: National Public as of December 2009 published by NASMHPD Research Institute in May 2010.

6. Unusual Incidents



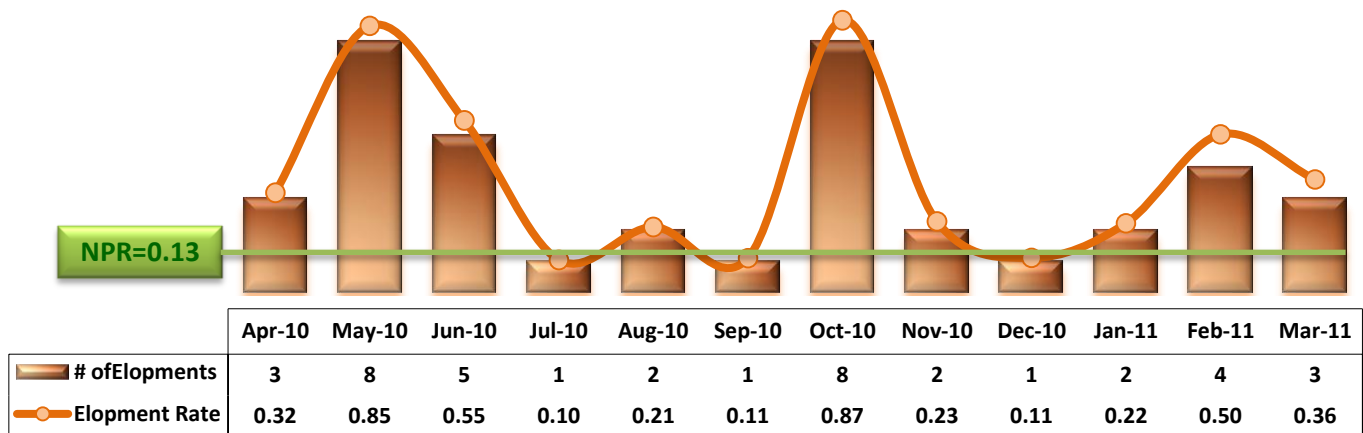
* Numbers above represent all types of the unusual incidents (UIs) that were reported to the Risk Manager by PRISM publication date, including those that did not involve any patients.

7. Patient-Involved Unusual Incidents



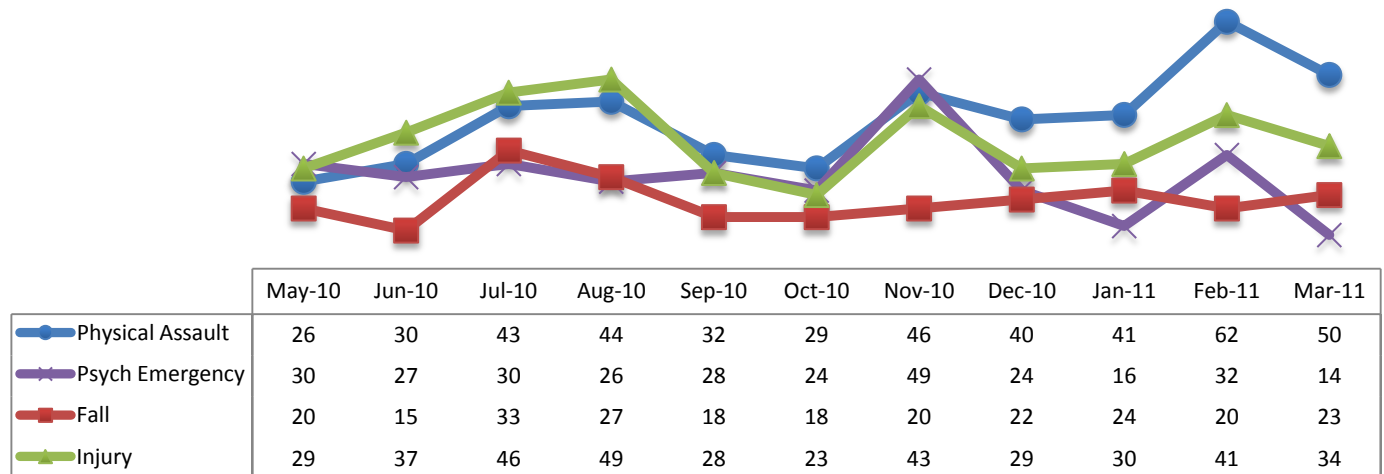
*The total number of patient-involved UIs counts only those incidents that involved at least one or more patients. Some patients may be involved in more than one incident and the number of unique patients does not double count them. The patient UI rate is the number of patient-involved unusual incidents reported for every 1000 inpatient days.

8. Elopements



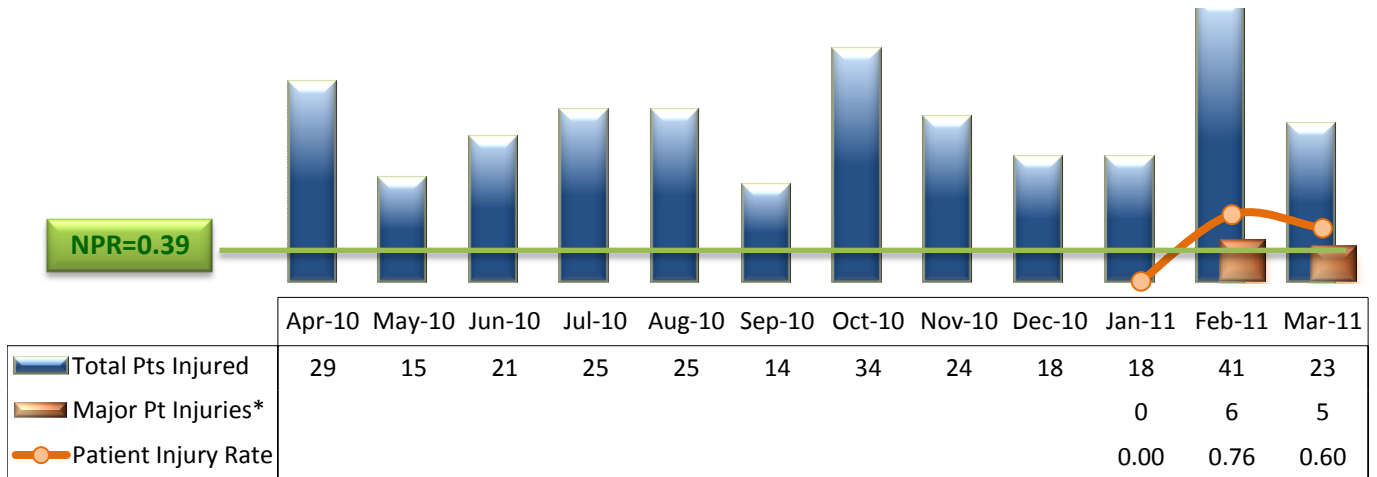
* It counts the total number of unauthorized leaves for any duration that were initiated during month and were recorded in Avatar. The elopement rate is the number of those unauthorized leaves that occurred for every 1000 inpatient days.

9. Selected Types of Incidents



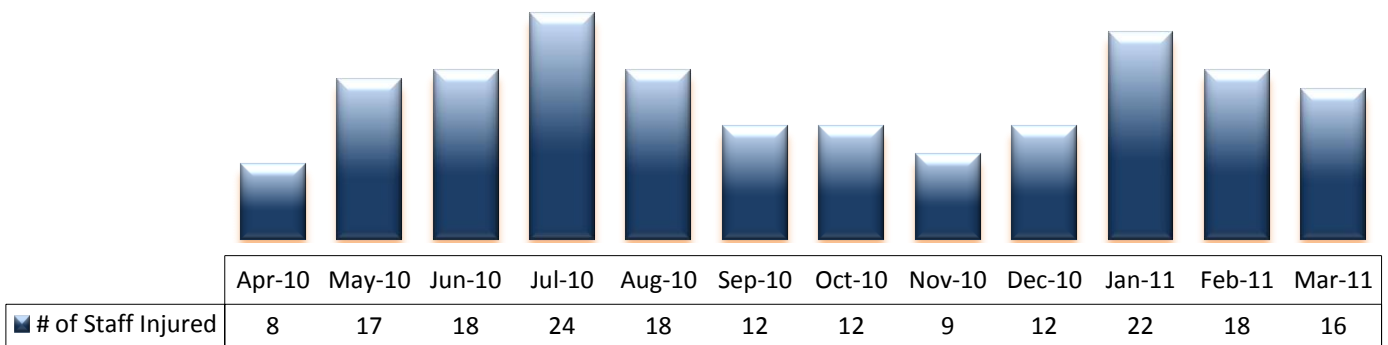
* These are incident types that are frequently reported. Some incidents may be counted in multiple categories. For example, a physical assault incident that accompanied psychiatric emergency and injury is counted under psychiatric emergency and injury as well as under physical assault. Injury is broadly defined to include any type of injuries regardless of the cause or severity level.

10. Patient Injuries



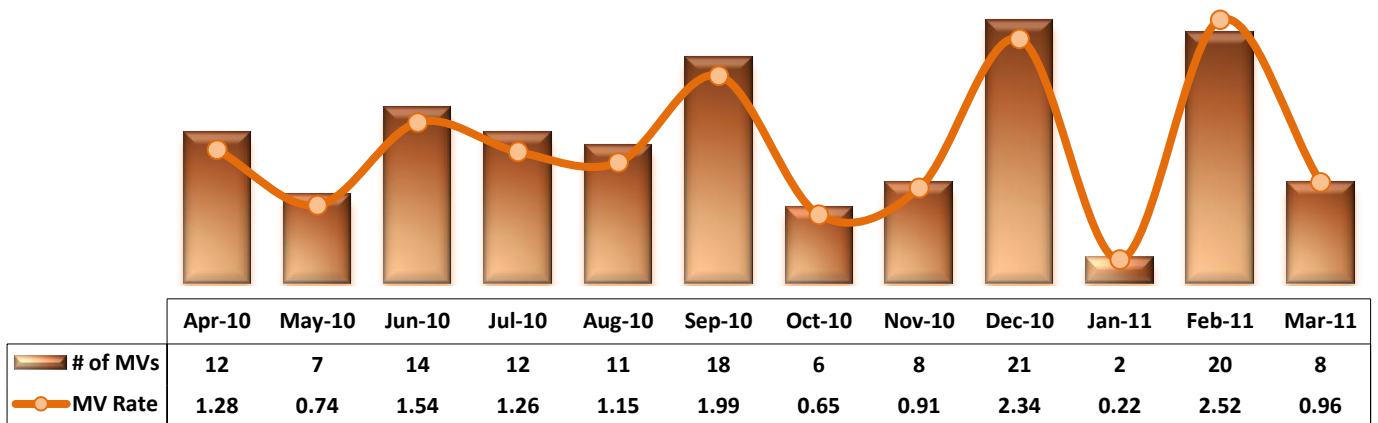
* Injury is broadly defined to include any type of injuries regardless of the cause or severity level. The total number of patients injured represents all of the reported injuries including minor injuries treated with first aid alone. However, the patient injury rate considers only the number of patient injuries that required beyond first-aid level treatment based on the NRI definition and the patient injury rate is the number of 'major' patient injuries per every 1000 inpatient days. The major patient injury data became available in January 2011.

11. Staff Injuries



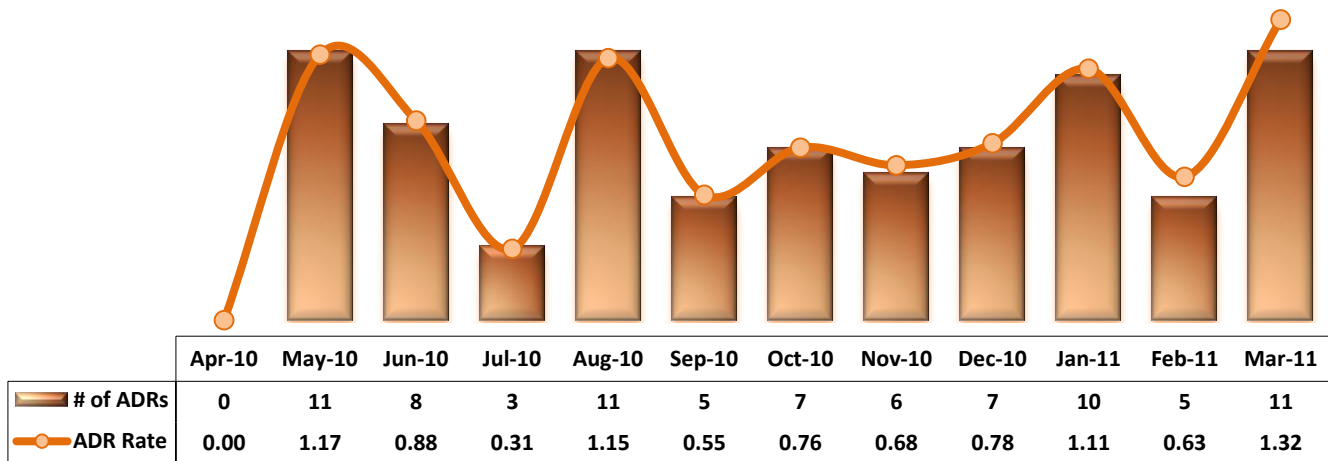
* Injury is broadly defined to include any type of injuries regardless of the cause or severity level. The total number of staff injured represents all of the reported staff injuries including minor injuries treated with first aid alone.

12. Medication Variances



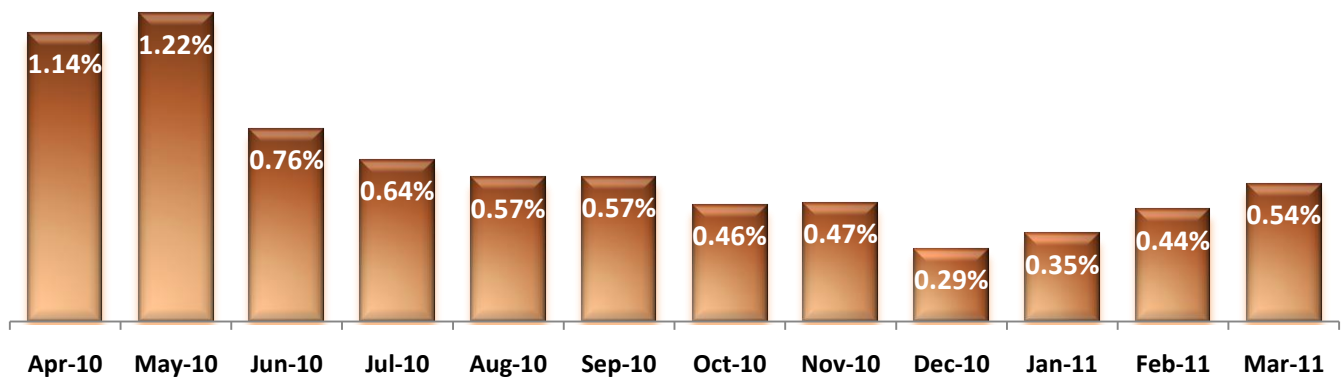
* MV Rate: Number of medication variance events that occurred for every 1000 inpatient days.

13. Adverse Drug Reactions

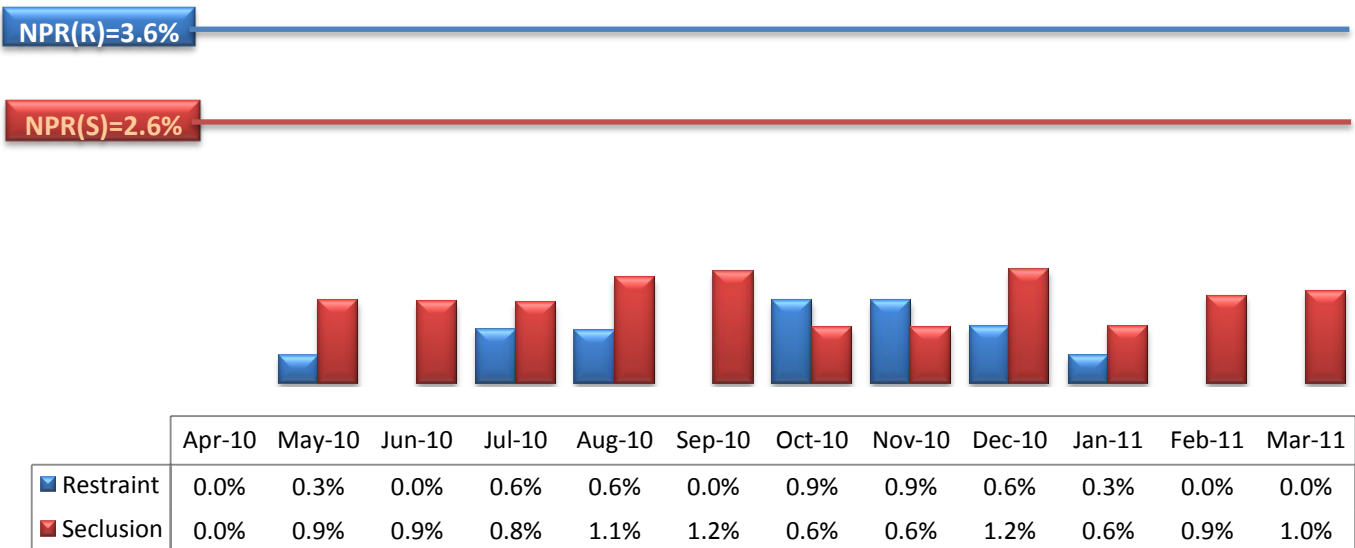


* ADR Rate: Number of medication variances that occurred for every 1000 inpatient days.

14. Percent of Missing Documentation on Med-Administration



15. Percent of Patients Restrained or Secluded

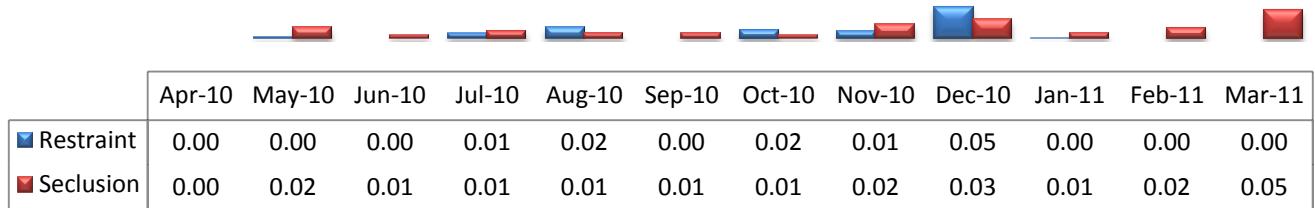


* Percent of unique patients who were restrained at least once and percent of unique patients who were secluded at least once.

16. Restraint Hours Rate & Seclusion Hours Rate

NPR(S)=0.55

NPR(R)=0.42



* Restraint/Seclusion Hours Rate: Number of hours spent in restraint/seclusion for every 1000 inpatient hours.

Performance Related Information for Staff & Managers

1. Census, Admissions, Discharges & Transfers

Data Source: Avatar

Updated as of 04/07/11

Category	Program	Apr-10	May-10	Jun-10	Jul-10	Aug-10	Sep-10	Oct-10	Nov-10	Dec-10	Jan-11	Feb-11	Mar-11	Monthly Average	Total (12mths)	Figure
Admissions	Civil	20	13	14	25	21	20	13	17	16	11	12	20	17	202	Figure 1
	Forensic	21	21	18	22	18	11	21	15	19	22	17	17	19	222	
	Total	41	34	32	47	39	31	34	32	35	33	29	37	35	424	
Discharges	Civil	30	15	14	20	25	17	17	20	22	15	22	18	20	235	Figure 2
	Forensic	23	12	20	20	24	16	21	16	15	20	31	15	19	233	
	Total	53	27	34	40	49	33	38	36	37	35	53	33	39	468	
Net Gain During Month	Civil	-10	-2	0	5	-4	3	-4	-3	-6	-4	-10	2		-33	
	Forensic	-2	9	-2	2	-6	-5	0	-1	4	2	-14	2		-11	
	Total	-12	7	-2	7	-10	-2	-4	-4	-2	-2	-24	4		-44	
All Individuals on Roll at End of Month		311	318	316	323	313	311	307	303	301	299	275	279	305		
a. Present on Unit		304	309	302	312	304	303	295	292	289	290	268	275	295		
b. On AL		4	3	7	6	6	5	7	6	7	6	3	1	5		
c. On UL		3	6	7	5	3	3	5	5	5	3	4	3	4		
All Individuals on Roll: Daily Average during Month		321	313	316	319	317	313	308	303	300	299	292	276	306		Figure 3
a. Present on Unit*		314	303	304	308	307	302	297	293	290	291	283	268	297		
b. On AL		4	5	5	6	6	8	6	3	5	4	4	5	5		
c. On UL		3	4	7	5	3	3	5	7	5	4	4	3	5		
Patient Days*		9408	9406	9105	9553	9532	9063	9213	8799	8983	9031	7925	8307	9027	108325	
Inter-Unit Transfers during Month**		7	6	11	20	11	9	3	1	3	15	28	3	10	117	Figure 4
Medical Leaves Initiated during Month	Emergency	19	21	16	15	20	21	13	25	16	24	21	19	19	230	
	Non-Emer	13	8	14	10	13	9	12	20	23	26	21	21	16	190	
	Total	32	29	30	25	33	30	25	45	39	50	42	40	35	420	
Non-Medical Leaves Initiated during Month		38	44	83	71	59	82	102	81	93	91	111	67	77	922	
UL Initiated during Month		3	8	5	1	2	1	8	2	1	2	4	3	3	40	
Total Unique Patients Served during Month		361	344	348	355	361	340	343	343	334	334	325	308	341		
30 Day Readmission***	Civil	2	1	0	4	1	1	1	2	1	0	2		1	15	
	Forensic	0	1	0	2	0	3	1	0	1	2	0		1	10	
	Total	2	2	0	6	1	4	2	2	2	2	2		2	25	

* Counts the number of patients who are present on the unit and excludes those on authorized or unauthorized leave at 11:59pm on a given day.

** Any unit changes that occurred on May 3, 2010, when all of the individuals in care moved to new units of the new facility, are not included above.

*** Number of patients returning within 30 days of discharges that occurred during month.

Performance Related Information for Staff & Managers

2. Key Performance Indicators

Data Source: UI DB, ADR DB, Restraint/Seclusion Log, and Avatar

Updated as of 04/07/11

Category	Program	Apr-10	May-10	Jun-10	Jul-10	Aug-10	Sep-10	Oct-10	Nov-10	Dec-10	Jan-11	Feb-11	Mar-11	Monthly Average	NPR* (Dec-09)	Figure
30 Day Readmit (Discharge Cohort)**	Civil	6.7%	6.7%	0.0%	20.0%	4.0%	5.9%	5.9%	10.0%	4.5%	0.0%	9.1%		7.0%		Figure 5
	Forensic	0.0%	8.3%	0.0%	10.0%	0.0%	18.8%	4.8%	0.0%	6.7%	10.0%	0.0%		4.7%		
	Combined	3.8%	7.4%	0.0%	15.0%	2.0%	12.1%	5.3%	5.6%	5.4%	5.7%	3.8%		5.8%	7.8%	
Number of Unusual Incidents		122	207	172	211	220	212	207	236	195	214	217	222	203		Figure 6
Patient Unusual Incident Rate		11.90	19.56	16.69	20.31	21.19	22.07	21.38	23.75	19.93	21.81	26.25	24.08	20.62		Figure 7
Elopement Rate		0.32	0.85	0.55	0.10	0.21	0.11	0.87	0.23	0.11	0.22	0.50	0.36	0.43	0.13	Figure 8
Selected Types of Incidents	Physical Assault		26	30	43	44	32	29	46	40	41	62	50	40		Figure 9
	Psych Emergency		30	27	30	26	28	24	49	24	16	32	14	27		
	Fall		20	15	33	27	18	18	20	22	24	20	23	22		
	Injury***		29	37	46	49	28	23	43	29	30	41	34	35		
Patient Injury Rate***											0.00	0.76	0.60	0.41	0.39	Figure 10
Patients with Major Injuries***											0	6	5	4		
Total Patients Injured***		29	15	21	25	25	14	34	24	18	18	41	23	24		
Total Staff Injured***		8	17	18	24	18	12	12	9	12	22	18	16	16		Figure 11
Medication Variance Rate		1.28	0.74	1.54	1.26	1.15	1.99	0.65	0.91	2.34	0.22	2.52	0.96	1.28		Figure 12
Adverse Drug Reaction Rate		0.00	1.17	0.88	0.31	1.15	0.55	0.76	0.68	0.78	1.11	0.63	1.32	0.78		Figure 13
Emergency STAT Med Orders Administered Involuntarily (EIM)									18	12	13	24	26	17		Figure 14
Unique EIM Events									10	8	4	12	13	9		
Unique Patients given EIM									5	7	2	9	8	6		
Percent of Missing Documentation of Medication Administration		1.14%	1.22%	0.76%	0.64%	0.57%	0.57%	0.46%	0.47%	0.29%	0.35%	0.44%	0.54%	0.63%		Figure 14
Percent of Patients Restrained		0.0%	0.3%	0.0%	0.6%	0.6%	0.0%	0.9%	0.9%	0.6%	0.3%	0.0%	0.0%	0.3%	3.6%	Figure 15
Percent of Patients Secluded		0.0%	0.9%	0.9%	0.8%	1.1%	1.2%	0.6%	0.6%	1.2%	0.6%	0.9%	1.0%	0.8%	2.6%	
Restraint Hours Rate		0.00	0.00	0.00	0.01	0.02	0.00	0.02	0.01	0.05	0.00	0.00	0.00	0.01	0.42	Figure 16
Seclusion Hours Rate		0.00	0.02	0.01	0.01	0.01	0.01	0.01	0.02	0.03	0.01	0.02	0.05	0.02	0.55	

* National Public Rate, NASMHPD Research Institute

** Percentage of patients returning within 30 days of discharges that occurred during month

Injury is broadly defined to include any type of injuries regardless of the cause or severity level. The total number of patients or staff injured represents all of the reported injuries including minor injuries treated with first aid alone. However, the patient injury rate considers only the number of patient injuries that required beyond first-aid level treatment based on the NRI definition and the patient injury rate is the number of 'major' patient injuries per every 1000 inpatient days. The patient major injury data became available in January 2011.

Performance Related Information for Staff & Managers

3. Unusual Incident & Medication

Data Source: UI DB, ADR DB, and Avatar

Updated as of 04/07/11

Category	Apr-10	May-10	Jun-10	Jul-10	Aug-10	Sep-10	Oct-10	Nov-10	Dec-10	Jan-11	Feb-11	Mar-11	Monthly Average	Total (12mths)	NPR* (Dec-09)	
Total Unusual Incidents**	122	207	172	211	220	212	207	236	195	214	217	222	203			
Total Major Unusual Incidents		138	113	142	143	117	102	181	130	143	146	153	137			
Patient Involved UI Only**	112	184	152	194	202	200	197	209	179	197	208	200	186			
<i>Patient UI Rate</i>	<i>11.90</i>	<i>19.56</i>	<i>16.69</i>	<i>20.31</i>	<i>21.19</i>	<i>22.07</i>	<i>21.38</i>	<i>23.75</i>	<i>19.93</i>	<i>21.81</i>	<i>26.25</i>	<i>24.08</i>	<i>20.62</i>			
Unique Patients Involved in UI**	103	118	95	111	117	100	112	110	114	107	128	115	111			
Selected Types of Incidents	Physical Assault		26	30	43	44	32	29	46	40	41	62	50	40		
	Psych Emergency		30	27	30	26	28	24	49	24	16	32	14	27		
	Fall		20	15	33	27	18	18	20	22	24	20	23	22		
	Injury		29	37	46	49	28	23	43	29	30	41	34	35		
Total Patients Injured***	29	15	21	25	25	14	34	24	18	18	41	23	24	287		
Patients with Major Injuries***										0	6	5	4	11		
<i>Patient Injury Rate***</i>										<i>0.00</i>	<i>0.76</i>	<i>0.60</i>	<i>0.41</i>		<i>0.39</i>	
Total Staff Injured**	8	17	18	24	18	12	12	9	12	22	18	16	16			
Total UL Incident Reports	3	7	5	2	3	1	8	6	1	4	3	4	4	47		
Total ULs Documented in Avatar	3	8	5	1	2	1	8	2	1	2	4	3	3			
<i>Elopement Rate</i>	<i>0.32</i>	<i>0.85</i>	<i>0.55</i>	<i>0.10</i>	<i>0.21</i>	<i>0.11</i>	<i>0.87</i>	<i>0.23</i>	<i>0.11</i>	<i>0.22</i>	<i>0.50</i>	<i>0.36</i>	<i>0.43</i>		<i>0.13</i>	
Total Medication Variance (MV) Incidents Reported **	12	7	14	12	11	18	6	8	21	2	20	8	12	139		
<i>MV Rate</i>	<i>1.28</i>	<i>0.74</i>	<i>1.54</i>	<i>1.26</i>	<i>1.15</i>	<i>1.99</i>	<i>0.65</i>	<i>0.91</i>	<i>2.34</i>	<i>0.22</i>	<i>2.52</i>	<i>0.96</i>	<i>1.28</i>			
Total Adverse Drug Reactions (ADR) Reported	0	11	8	3	11	5	7	6	7	10	5	11	7	84		
<i>ADR Rate</i>	<i>0.00</i>	<i>1.17</i>	<i>0.88</i>	<i>0.31</i>	<i>1.15</i>	<i>0.55</i>	<i>0.76</i>	<i>0.68</i>	<i>0.78</i>	<i>1.11</i>	<i>0.63</i>	<i>1.32</i>	<i>0.78</i>			
Total Routine Medication Administrations Scheduled	112799	112575	109765	114363	115810	109712	111397	104863	107095	105329	93288	99376		1296372		
Total Missing Documentations	1288	1370	835	729	659	626	512	490	309	365	413	540		8136		
<i>Percent of Missing Documentation</i>	<i>1.14%</i>	<i>1.22%</i>	<i>0.76%</i>	<i>0.64%</i>	<i>0.57%</i>	<i>0.57%</i>	<i>0.46%</i>	<i>0.47%</i>	<i>0.29%</i>	<i>0.35%</i>	<i>0.44%</i>	<i>0.54%</i>		<i>0.63%</i>		
Total Patients with >=3 STATs	23	41	30	33	40	28	31	29	25	44	53	33	34			
Emergency STAT Med Orders Administered Involuntarily (EIM)							10	18	12	13	24	26	17			
Unique EIM Events							9	10	8	4	12	13	9			
Unique Patients given EIM							7	5	7	2	9	8	6			

* National Public Rate, NASMHPD Research Institute

** Numbers may change if any additional UI report is made after the data run date from UI database (around the 15th of the following month).

Performance Related Information for Staff & Managers

4. Restraint & Seclusion

Data Source: Restraint/Seclusion Log and UI DB (for # of total events and patients) and Avatar (for patient days/hours)

Updated as of 04/07/11

Category	Apr-10	May-10	Jun-10	Jul-10	Aug-10	Sep-10	Oct-10	Nov-10	Dec-10	Jan-11	Feb-11	Mar-11	Monthly Average	Total (12mths)	NPR* (Dec-09)
Number of Restraint Events	0	1	0	2	3	0	3	4	8	1	0	0	1.8	22	
Number of Unique Patients Restrained	0	1	0	2	2	0	3	3	2	1	0	0	1.2		
Percentage of Patients Restrained	0.0%	0.3%	0.0%	0.6%	0.6%	0.0%	0.9%	0.9%	0.6%	0.3%	0.0%	0.0%	0.3%		3.6%
Total Restraint Hours (h:mm)	0:00	0:45	0:00	2:05	4:15	0:00	3:20	2:46	11:08	0:20	0:00	0:00	2:03	24:39	
Restraint Hours Rate	0.00	0.00	0.00	0.01	0.02	0.00	0.02	0.01	0.05	0.00	0.00	0.00	0.01		0.42
Number of Seclusion Events	0	5	4	3	4	5	2	2	2	3	3	6	3.3	39	
Number of Unique Patients Secluded	0	3	3	3	4	4	2	2	4	2	3	3	2.8		
Percentage of Patients Secluded	0.0%	0.9%	0.9%	0.8%	1.1%	1.2%	0.6%	0.6%	1.2%	0.6%	0.9%	1.0%	0.8%		2.6%
Total Seclusion Hours (h:mm)	0:00	4:15	1:22	3:05	2:10	2:10	1:20	4:57	6:40	2:10	3:25	9:15	3:24	40:49	
Seclusion Hours Rate	0.00	0.02	0.01	0.01	0.01	0.01	0.01	0.02	0.03	0.01	0.02	0.05	0.02		0.55

* National Public Rate, NASMHPD Research Institute

Performance Related Information for Staff & Managers

5. Major Incidents by Incident Location/Unit

Data Source: UI DB

Updated as of 04/07/11

Category		Apr-10	May-10	Jun-10	Jul-10	Aug-10	Sep-10	Oct-10	Nov-10	Dec-10	Jan-11	Feb-11	Mar-11	Monthly Average	Total (11mths)	Percent
Total Unusual Incidents			207	172	211	220	212	207	236	195	214	217	222	210	2313	
Total Major Incidents*			138	113	142	143	117	102	181	130	143	146	153	137	1508	100%
Major Incident Location	1A		13	5	17	21	14	11	12	10	11	5	11	12	130	9%
	1B		9	3	7	7	12	13	12	6	6	9	12	9	96	6%
	1C		5	5	1	5	6	7	4	14	8	15	9	7	79	5%
	1D		20	19	13	18	19	11	42	32	9	10	14	19	207	14%
	1E		6	14	20	24	7	7	12	9	16	33	22	15	170	11%
	1F		17	9	14	9	11	9	13	12	14	20	9	12	137	9%
	1G		6	7	6	5	13	5	12	9	11	9	13	9	96	6%
	2A		7	5	4	7	6	2	4	4	6	3	4	5	52	3%
	2B		1	4	8	1	0	4	6	2	4	0	1	3	31	2%
	2C		4	3	10	4	3	5	12	11	17	14	18	9	101	7%
	2D		9	7	16	6	11	9	22	5	10	12	7	10	114	8%
	ANXA/B		9	2	2	5	2	3	4	0	5	0	0	3	32	2%
	TLC		11	14	14	12	3	7	10	3	12	9	17	10	112	7%
	Other		21	16	10	19	10	9	16	13	14	7	16	14	151	10%
Total Physical Assault Incidents			26	30	43	44	32	29	46	40	41	62	50	40	443	100%
Assault Incident Location	1A		1	1	3	2	2	1	5	2	4	1	1	2	23	5%
	1B		2	0	0	1	2	2	0	0	0	1	2	1	10	2%
	1C		2	1	0	3	2	4	2	6	4	3	2	3	29	7%
	1D		6	2	5	5	6	1	8	8	3	6	11	6	61	14%
	1E		1	4	8	12	3	1	5	3	4	17	8	6	66	15%
	1F		4	9	9	7	4	6	4	4	6	13	3	6	69	16%
	1G		1	3	3	4	4	2	7	4	6	8	7	4	49	11%
	2A		1	0	0	1	1	0	1	2	0	0	1	1	7	2%
	2B		0	2	1	0	0	0	2	1	0	0	0	1	6	1%
	2C		1	0	1	2	1	1	0	3	5	3	3	2	20	5%
	2D		3	3	6	3	5	5	10	4	5	5	4	5	53	12%
	ANXA/B		0	0	1	0	0	2	1	0	0	0	0	0	4	1%
	TLC		1	5	6	2	2	3	1	3	3	3	7	3	36	8%
	Other		3	0	0	2	0	1	0	0	1	2	1	1	10	2%

Performance Related Information for Staff & Managers

5. Major Incidents by Incident Location/Unit

Data Source: UI DB

Updated as of 04/07/11

Category	Apr-10	May-10	Jun-10	Jul-10	Aug-10	Sep-10	Oct-10	Nov-10	Dec-10	Jan-11	Feb-11	Mar-11	Monthly Average	Total (11mths)	Percent
Total Fall Incidents		20	15	33	27	18	18	20	22	24	20	23	22	240	100%
Fall Incident Location															
1A		6	2	10	11	5	7	5	3	5	2	7	6	63	26%
1B		3	0	3	1	2	5	3	2	3	2	1	2	25	10%
1C		0	0	0	0	0	0	1	5	0	2	2	1	10	4%
1D		0	2	0	2	1	1	0	3	1	1	0	1	11	5%
1E		1	1	2	0	0	1	0	1	3	1	0	1	10	4%
1F		2	0	1	1	2	0	1	0	0	0	1	1	8	3%
1G		0	2	1	0	1	0	0	1	1	0	2	1	8	3%
2A		0	1	1	2	1	0	0	1	1	1	1	1	9	4%
2B		0	1	3	1	0	2	0	0	0	0	0	1	7	3%
2C		0	1	1	0	1	1	4	2	2	5	2	2	19	8%
2D		2	0	6	2	0	1	4	0	1	1	0	2	17	7%
ANXA/B		0	2	0	1	2	0	0	0	0	0	0	0	5	2%
TLC		2	1	5	4	0	0	1	0	3	4	4	2	24	10%
Other		4	2	0	2	3	0	1	4	4	1	3	2	24	10%
Total Injury Incidents		29	37	46	49	28	23	43	29	30	41	34	35	389	100%
Injury Incident Location															
1A		4	1	3	7	4	3	5	2	2	0	3	3	34	9%
1B		2	0	2	2	1	3	2		2	2	3	2	19	5%
1C		0	0	0	3	0	3	2	3	2	0	1	1	14	4%
1D		3	5	6	5	6		12	8	1	2	6	5	54	14%
1E		1	4	10	7	3	1	3	2	2	8	2	4	43	11%
1F		4	5	5	5	2	2	6	3	3	10	1	4	46	12%
1G		1	5	2	3	1	0	3	2	3	5	4	3	29	7%
2A		0	1	1	2	1	0	0	3	1	0	1	1	10	3%
2B		1	3	3	0	0	1	2	0	1	0	0	1	11	3%
2C		1	1	1	2	2	2	1	0	3	3	6	2	22	6%
2D		2	2	6	4	2	3	4	2	1	6	1	3	33	8%
ANXA/B		0	1	0	1	2	1	0	0	0	0	0	0	5	1%
TLC		1	5	4	4	0	2	0	2	3	2	5	3	28	7%
Other		9	4	3	4	4	2	3	2	6	3	1	4	41	11%

* Not every incident is a major incident. This counts only those major incidents that required extensive investigations from the risk manager.

Performance Related Information for Staff & Managers

6. Demographic Information of Individuals in Care

Data Source: Avatar

Updated as of 04/07/11

Category	Sub-group	Apr-10	May-10	Jun-10	Jul-10	Aug-10	Sep-10	Oct-10	Nov-10	Dec-10	Jan-11	Feb-11	Mar-11	Monthly Average	Percent*
Total Active (on Roll) at End of Month*							311	307	303	301	299	275	279	296	
Gender	Female						86	80	75	74	71	66	67	74	25.0%
	Male						225	227	228	227	228	209	212	222	75.0%
Age	Median Age (Years)						55 yrs	55 yrs	55 yrs	55 yrs	54 yrs	55 yrs	55 yrs	55 yrs	
	<30 years old						23	18	14	15	14	16	15	16	5.5%
	>=30 and <40 years old						21	22	24	30	31	23	27	25	8.6%
	>=40 and <50 years old						59	64	62	56	58	47	49	56	19.0%
	>=50 and <60 years old						119	120	119	118	114	114	108	116	39.1%
	>=60 years old						89	83	84	82	82	75	80	82	27.7%
Legal Status of Individuals on Roll at End of Month	Emergency						36			26	19	19	21	24	8.2%
	Inpatient Commitment						35			33	35	32	31	33	11.2%
	Outpatient Commitment						31			30	32	29	29	30	10.2%
	Voluntary						43			46	43	41	40	43	14.4%
	Civil Sub-total						145			135	129	121	121	130	43.9%
	DC Exam						52			51	55	42	41	48	16.3%
	Mentally Incompetent						5			3	3	2	2	3	1.0%
	NGBRI - DC						91			94	94	93	98	94	31.7%
	NGBRI - US						10			10	10	9	9	10	3.2%
	NGBIR - VI						2			2	2	2	2	2	0.7%
Dual Commitment						1			1	1	1	1	1	0.3%	
Non-Protesting						1			1	1	1	1	1	0.3%	
Sexual Psychopath (Miller Act)						4			4	4	4	4	4	1.3%	
	Forensic Sub-total						166			166	170	154	158	163	54.9%
Length of Stay	Median LOS (Days)						811 d			903 d	934 d	1091 d	994 d	947 d	
	Average LOS (Days)						2967 d			3099 d	3133 d	3282 d	3192 d	3135 d	
	<30 Days						28			27	32	30	33	30	10.1%
	>=30 ~ <365 Days						82			79	74	60	62	71	24.1%
	>= 1 Year & < 2 Years						38			30	29	27	28	30	10.3%
	>= 2 Years & < 5 Years						44			48	47	45	44	46	15.4%
	>= 5 Years & < 20 Years						69			66	66	63	64	66	22.1%
>= 20 Years						50			51	51	50	48	50	16.9%	

* Counts the total number of individuals who are on the hospital roll at end of each month. This number serves as denominator to calculate percentage of each group.