

**Government of the District of Columbia
Department of Mental Health (DMH)**



Performance Related Information for Staff and Managers

PRISM

February 2011

Table of Contents

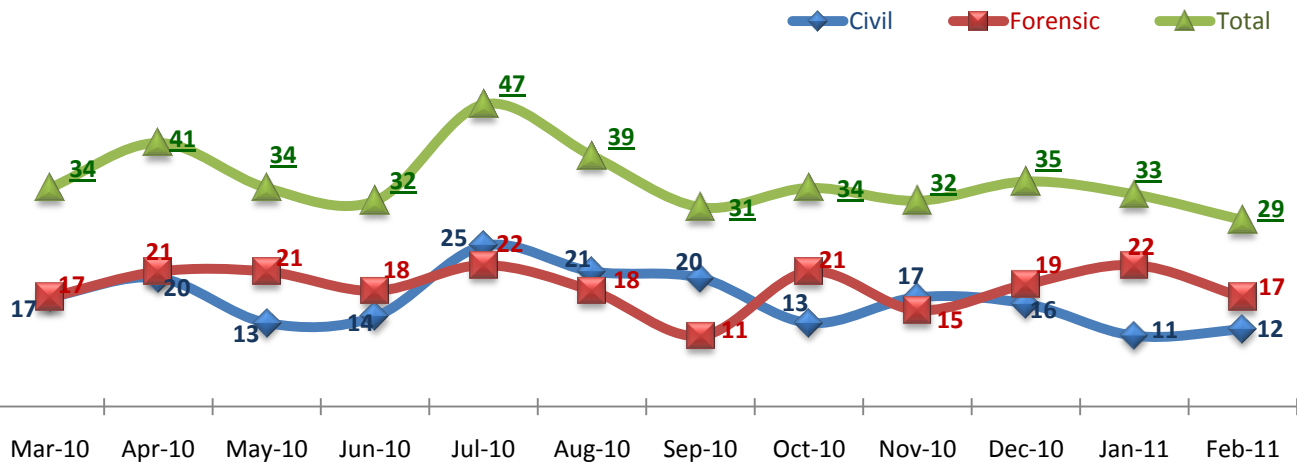


1.	Admissions to SEH	1
2.	Discharges from SEH.....	1
3.	Average Daily Census	1
4.	Transfers	2
5.	30-Day Readmission Rate	2
6.	Unusual Incidents.....	2
7.	Patient-Involved Unusual Incidents.....	3
8.	Eloperments	3
9.	Selected Types of Incidents	3
10.	Patient Injuries.....	4
11.	Staff Injuries	4
12.	Medication Variances.....	4
13.	Adverse Drug Reactions	5
14.	Percent of Missing Documentation on Med-Administration.....	5
15.	Percent of Patients Restrained or Secluded.....	5
16.	Restraint Hours Rate & Seclusion Hours Rate	6
	<input type="checkbox"/> Appendix 1) Table – Census, Admissions & Discharges	
	<input type="checkbox"/> Appendix 2) Table – Key Performance Indicators	
	<input type="checkbox"/> Appendix 3) Table – Unusual Incident & Medication	
	<input type="checkbox"/> Appendix 4) Table – Restraint & Seclusion	
	<input type="checkbox"/> Appendix 5) Table – Major Incidents by Incident Location/Unit	
	<input type="checkbox"/> Appendix 6) Table – Demographic Information of Individuals in Care	

3/15/2011

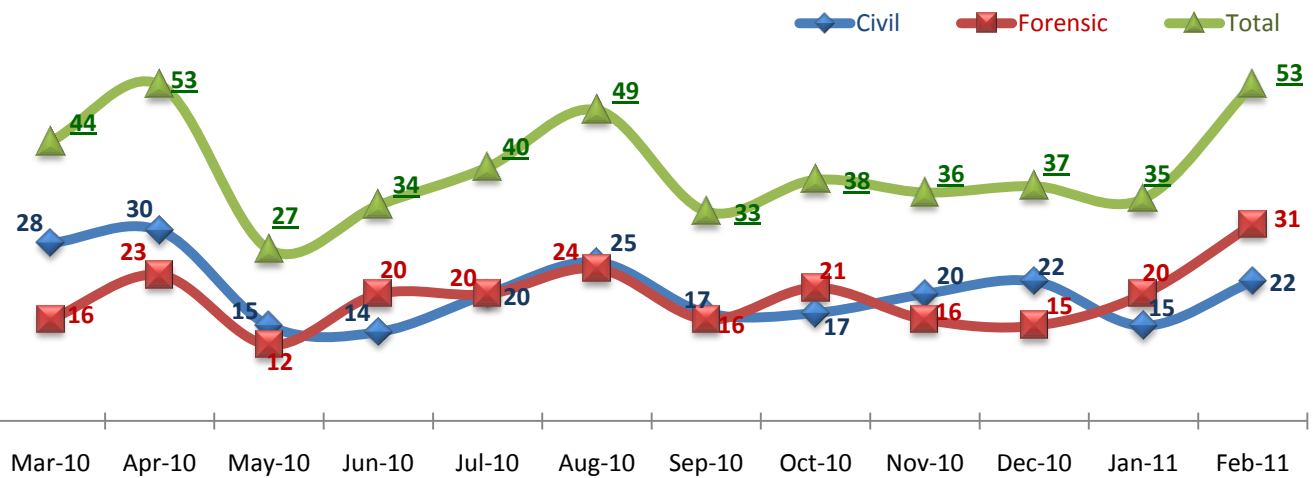
Office of Statistics and Reporting (OSR)

1. Admissions to SEH



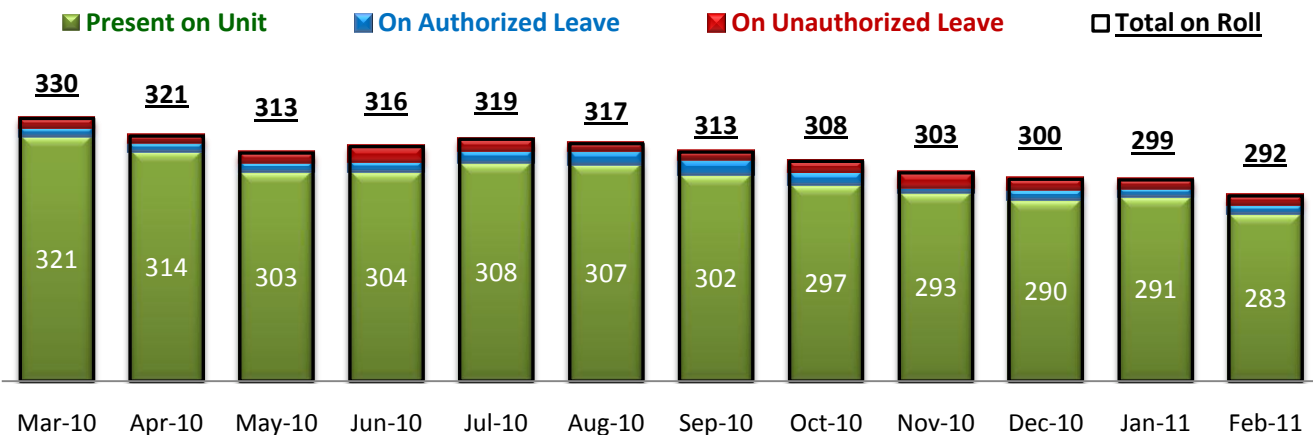
* Number of admissions to SEH inpatient program to SEH, including transfers from outpatient to inpatient program

2. Discharges from SEH



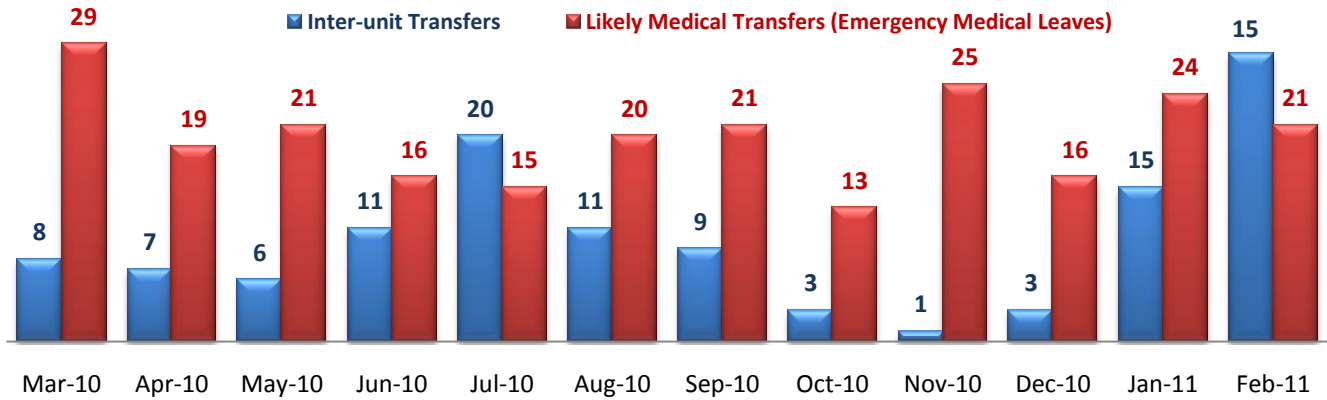
* Number of discharges from SEH inpatient program, including transfers from inpatient to outpatient program

3. Average Daily Census



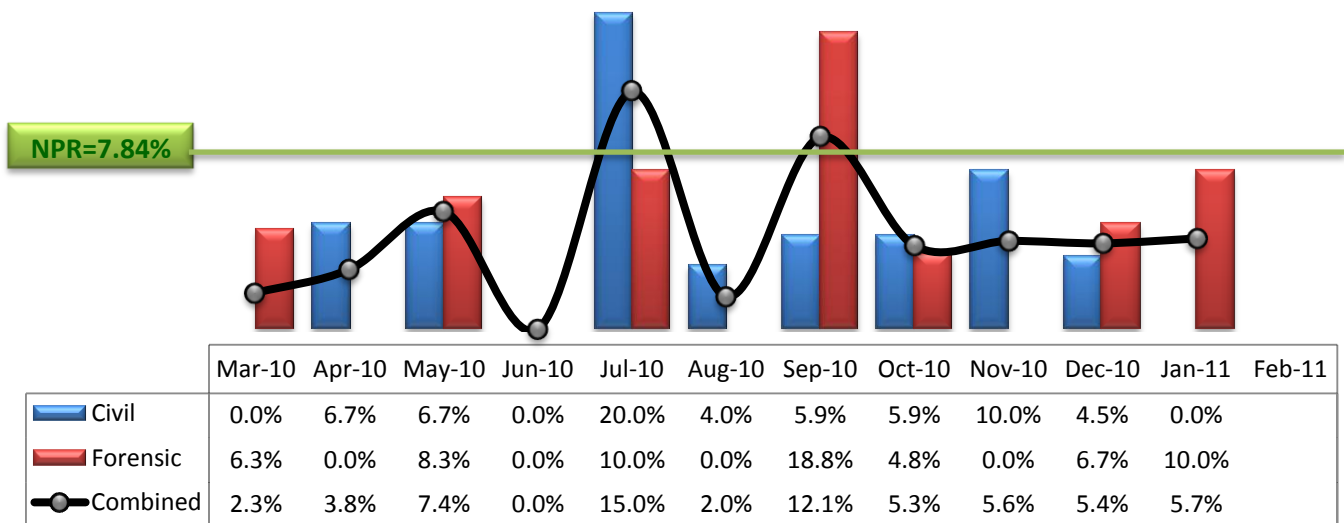
* Data above is the daily average number of individuals counted at 11:59 PM every day during each month.

4. Transfers



* Number of inter-unit transfers that occurred during month and number of emergency medical leaves that were initiated during month.

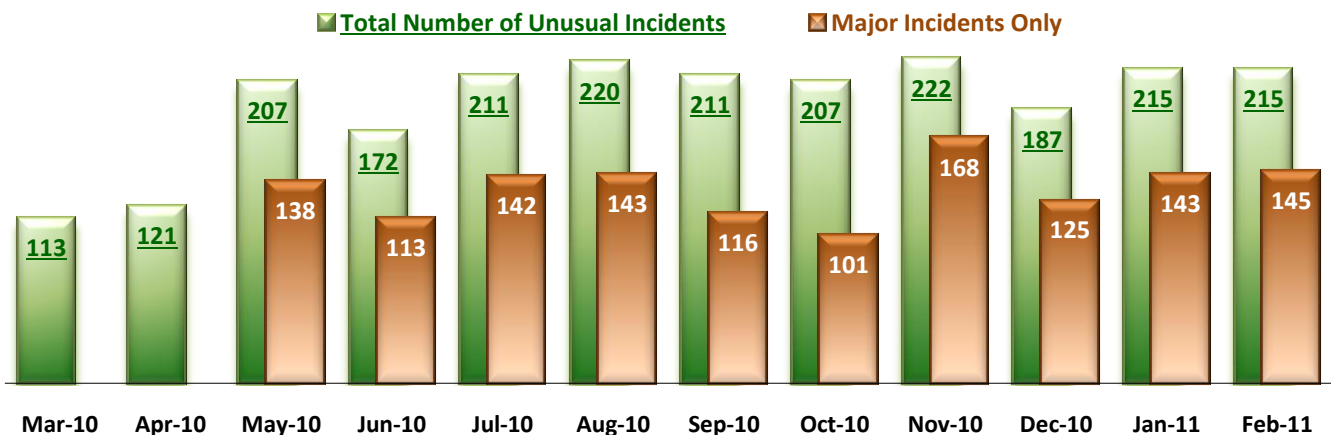
5. 30-Day Readmission Rate



* Percent of discharges that returned to SEH within 30 days of discharges. It does not include those who may have been re-hospitalized to another psychiatric facility. This measure requires 30-day observation following discharge.

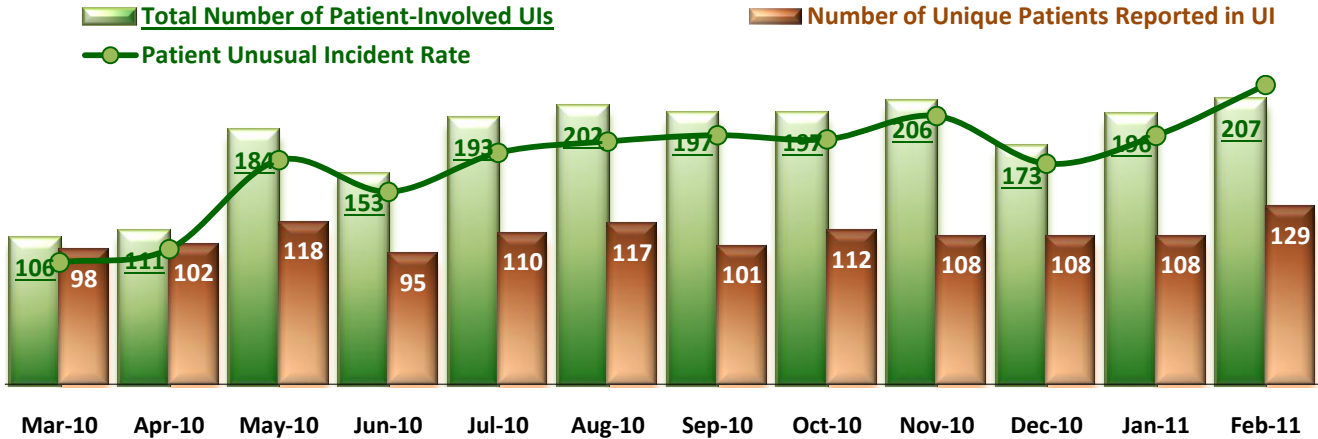
** NPR: National Public Rate as of December 2009 published by NASMHPD Research Institute in May 2010.

6. Unusual Incidents



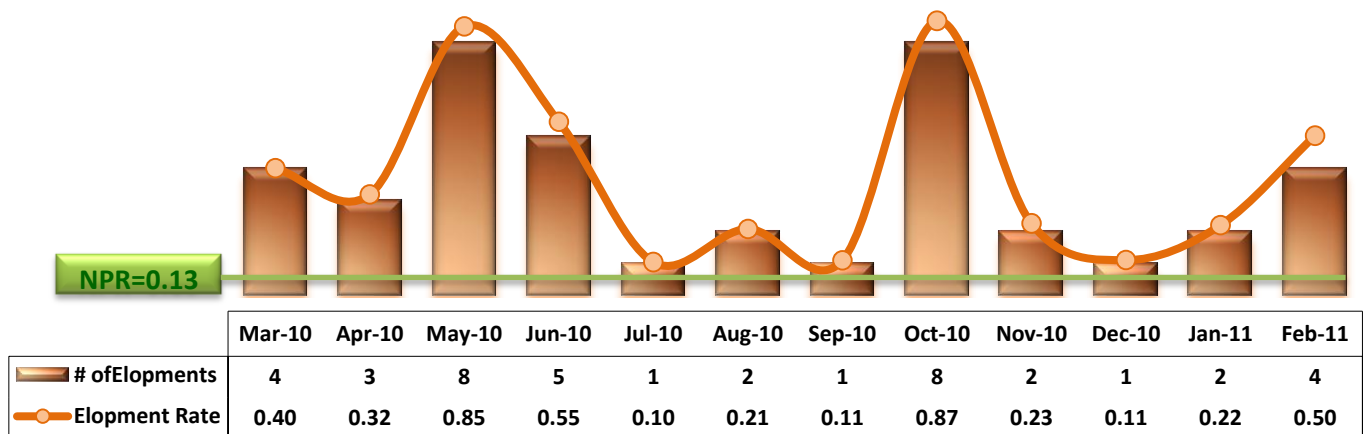
* Numbers above represent all types of the unusual incidents (UIs) that were reported to the Risk Manager by PRISM publication date, including those that did not involve any patients.

7. Patient-Involved Unusual Incidents



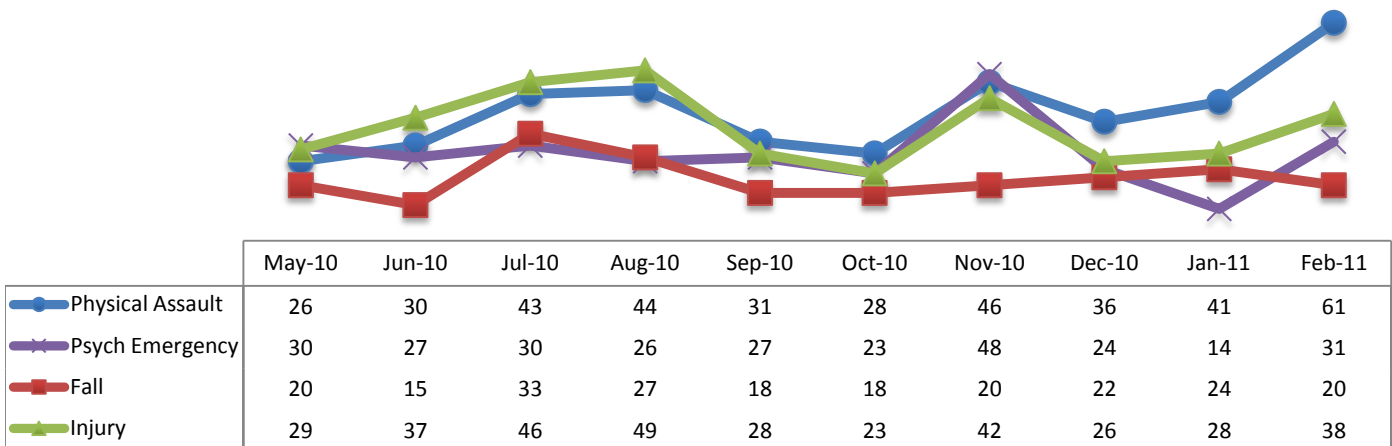
*The total number of patient-involved UIs counts only those incidents that involved at least one or more patients. Some patients may be involved in more than one incident and the number of unique patients does not double count them. The patient UI rate is the number of patient-involved unusual incidents reported for every 1000 inpatient days.

8. Elopements



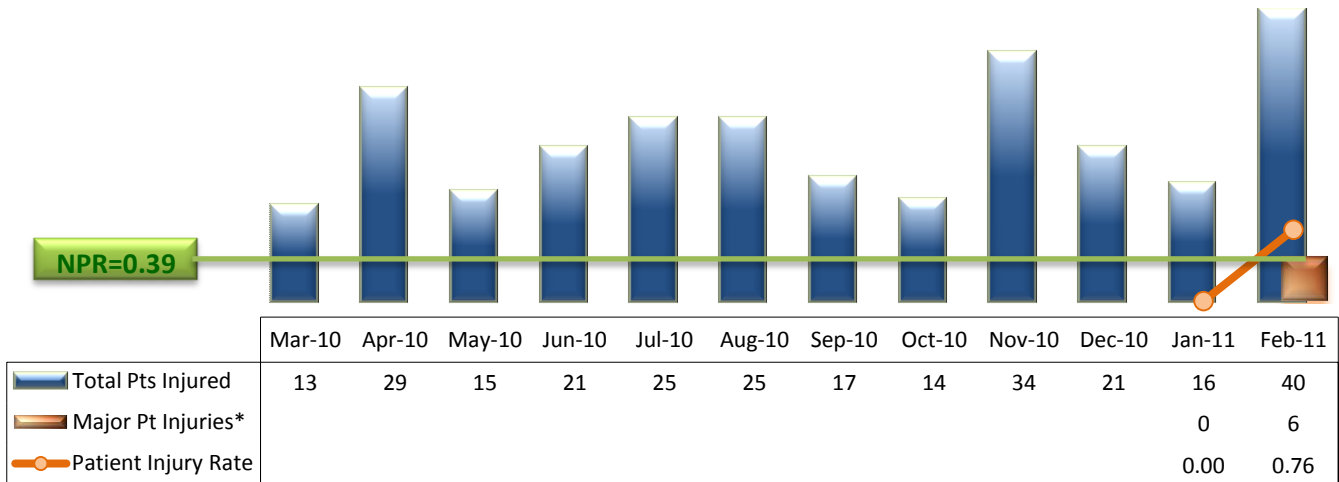
* It counts the total number of unauthorized leaves for any duration that were initiated during month and were recorded in Avatar. The elopement rate is the number of those unauthorized leaves that occurred for every 1000 inpatient days.

9. Selected Types of Incidents



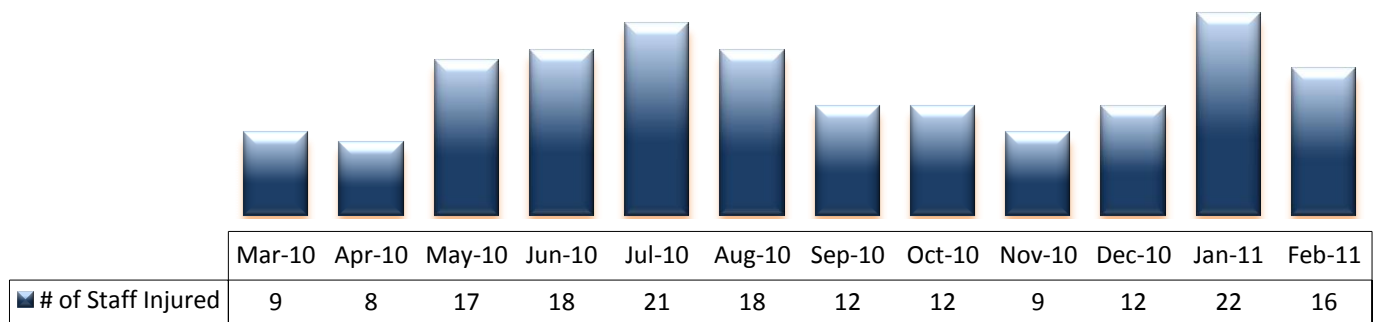
* These are incident types that are frequently reported. Some incidents may be counted in multiple categories. For example, a physical assault incident that accompanied psychiatric emergency and injury is counted under psychiatric emergency and injury as well as under physical assault. Injury is broadly defined to include any type of injuries regardless of the cause or severity level.

10. Patient Injuries



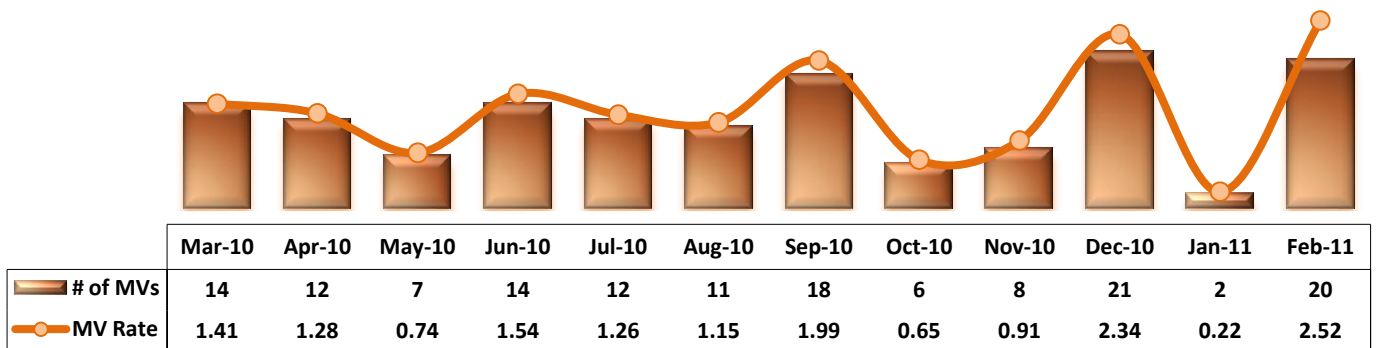
* Injury is broadly defined to include any type of injuries regardless of the cause or severity level. The total number of patients injured represents all of the reported injuries including minor injuries treated with first aid alone. However, the patient injury rate considers only the number of patient injuries that required beyond first-aid level treatment based on the NRI definition and the patient injury rate is the number of 'major' patient injuries per every 1000 inpatient days. The major patient injury data became available in January 2011.

11. Staff Injuries



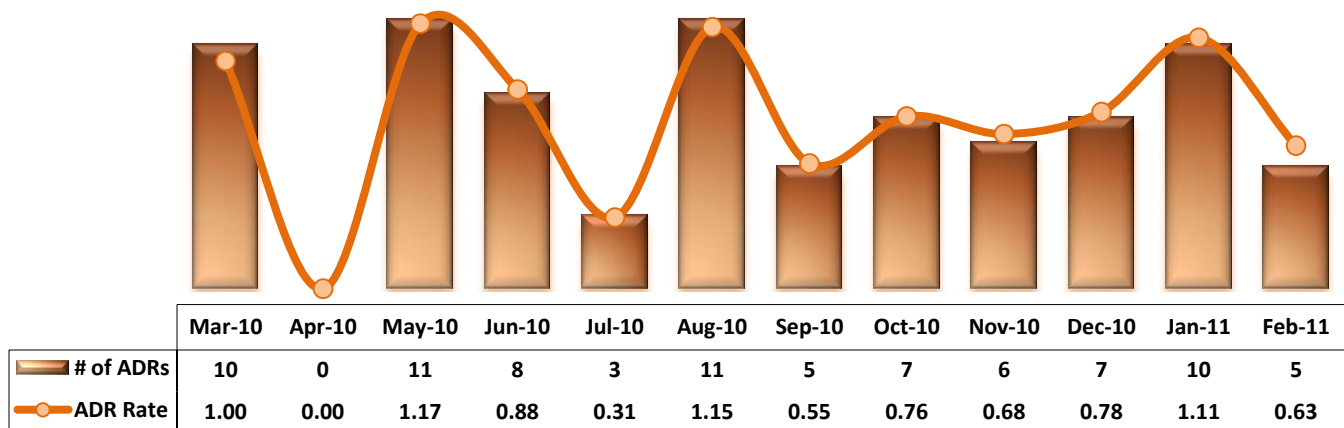
* Injury is broadly defined to include any type of injuries regardless of the cause or severity level. The total number of staff injured represents all of the reported staff injuries including minor injuries treated with first aid alone.

12. Medication Variances



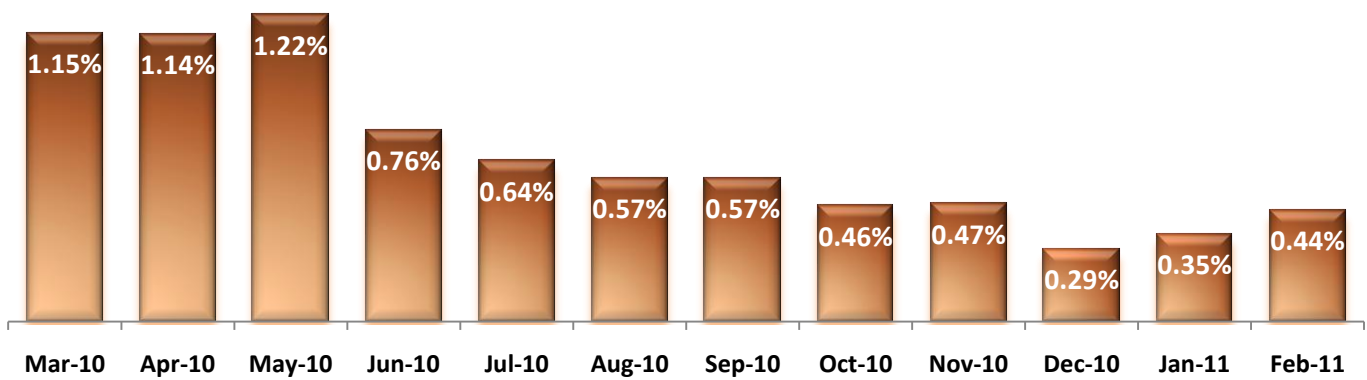
* MV Rate: Number of medication variance events that occurred for every 1000 inpatient days.

13. Adverse Drug Reactions

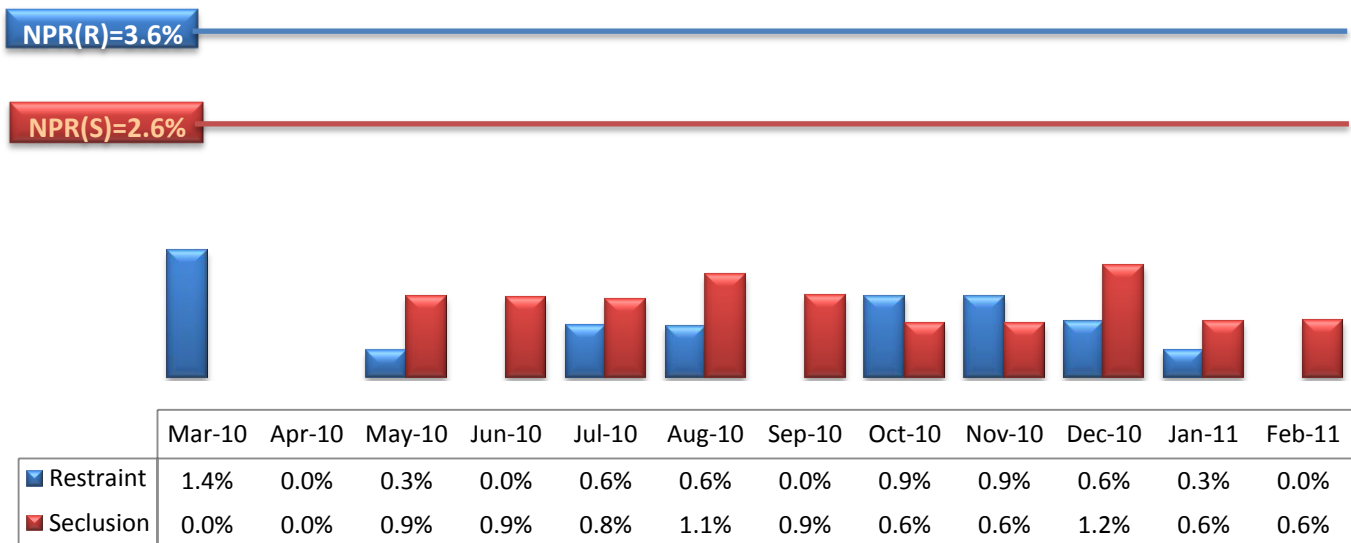


* ADR Rate: Number of medication variances that occurred for every 1000 inpatient days.

14. Percent of Missing Documentation on Med-Administration



15. Percent of Patients Restrained or Secluded

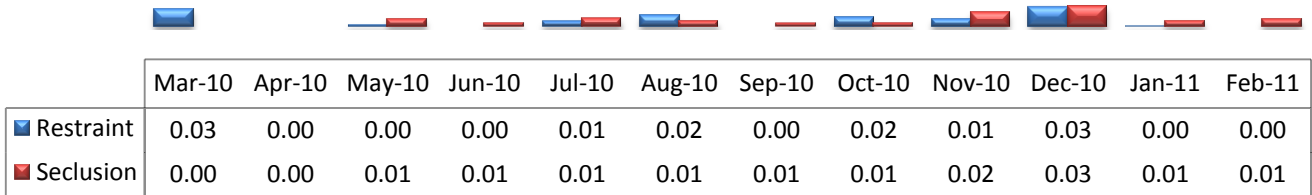


* Percent of unique patients who were restrained at least once and percent of unique patients who were secluded at least once.

16. Restraint Hours Rate & Seclusion Hours Rate

NPR(S)=0.55

NPR(R)=0.42



* Restraint/Seclusion Hours Rate: Number of hours spent in restraint/seclusion for every 1000 inpatient hours.

Performance Related Information for Staff & Managers

1. Census, Admissions, Discharges & Transfers

Data Source: Avatar

Updated as of 03/11/11

Category	Program	Mar-10	Apr-10	May-10	Jun-10	Jul-10	Aug-10	Sep-10	Oct-10	Nov-10	Dec-10	Jan-11	Feb-11	Monthly Average	Total (12mths)	Figure
Admissions	Civil	17	20	13	14	25	21	20	13	17	16	11	12	17	199	Figure 1
	Forensic	17	21	21	18	22	18	11	21	15	19	22	17	19	222	
	Total	34	41	34	32	47	39	31	34	32	35	33	29	35	421	
Discharges	Civil	28	30	15	14	20	25	17	17	20	22	15	22	20	245	Figure 2
	Forensic	16	23	12	20	20	24	16	21	16	15	20	31	20	234	
	Total	44	53	27	34	40	49	33	38	36	37	35	53	40	479	
Net Gain During Month	Civil	-11	-10	-2	0	5	-4	3	-4	-3	-6	-4	-10		-46	
	Forensic	1	-2	9	-2	2	-6	-5	0	-1	4	2	-14		-12	
	Total	-10	-12	7	-2	7	-10	-2	-4	-4	-2	-2	-24		-58	
All Individuals on Roll at End of Month		323	311	318	316	323	313	311	307	303	301	299	275	308		
a. Present on Unit		315	304	309	302	312	304	303	295	292	289	290	268	299		
b. On AL		5	4	3	7	6	6	5	7	6	7	6	3	5		
c. On UL		3	3	6	7	5	3	3	5	5	5	3	4	4		
All Individuals on Roll: Daily Average during Month		330	321	313	316	319	317	313	308	303	300	299	292	311		Figure 3
a. Present on Unit*		321	314	303	304	308	307	302	297	293	290	291	283	301		
b. On AL		4	4	5	5	6	6	8	6	3	5	4	4	5		
c. On UL		4	3	4	7	5	3	3	5	7	5	4	4	5		
Patient Days*		9958	9408	9406	9105	9553	9532	9063	9213	8799	8983	9031	7925	9165	109976	
Inter-Unit Transfers during Month**		8	7	6	11	20	11	9	3	1	3	15	28	10	122	Figure 4
Medical Leaves Initiated during Month	Emergency	29	19	21	16	15	20	21	13	25	16	24	21	20	240	
	Non-Emer	12	13	8	14	10	13	9	12	20	23	26	21	15	181	
	Total	41	32	29	30	25	33	30	25	45	39	50	42	35	421	
Non-Medical Leaves Initiated during Month		35	38	44	83	71	59	82	102	81	93	91	111	74	890	
UL Initiated during Month		4	3	8	5	1	2	1	8	2	1	2	4	3	41	
Total Unique Patients Served during Month		367	361	344	348	355	361	340	343	343	334	334	325	346		
30 Day Readmission***	Civil	0	2	1	0	4	1	1	1	2	1	0		1	13	
	Forensic	1	0	1	0	2	0	3	1	0	1	2		1	11	
	Total	1	2	2	0	6	1	4	2	2	2	2		2	24	

* Counts the number of patients who are present on the unit and excludes those on authorized or unauthorized leave at 11:59pm on a given day.

** Any unit changes that occurred on May 3, 2010, when all of the individuals in care moved to new units of the new facility, are not included above.

*** Number of patients returning within 30 days of discharges that occurred during month.

Performance Related Information for Staff & Managers

2. Key Performance Indicators

Data Source: UI DB, ADR DB, Restraint/Seclusion Log, and Avatar

Updated as of 03/11/11

Category	Program	Mar-10	Apr-10	May-10	Jun-10	Jul-10	Aug-10	Sep-10	Oct-10	Nov-10	Dec-10	Jan-11	Feb-11	Monthly Average	NPR* (Dec-09)	Figure
30 Day Readmit (Discharge Cohort)**	Civil	0.0%	6.7%	6.7%	0.0%	20.0%	4.0%	5.9%	5.9%	10.0%	4.5%	0.0%		5.8%		Figure 5
	Forensic	6.3%	0.0%	8.3%	0.0%	10.0%	0.0%	18.8%	4.8%	0.0%	6.7%	10.0%		5.1%		
	Combined	2.3%	3.8%	7.4%	0.0%	15.0%	2.0%	12.1%	5.3%	5.6%	5.4%	5.7%		5.5%	7.8%	
Number of Unusual Incidents		113	121	207	172	211	220	211	207	222	187	215	215	192		Figure 6
Patient Unusual Incident Rate		10.64	11.80	19.56	16.80	20.20	21.19	21.74	21.38	23.41	19.26	21.70	26.12	19.32		Figure 7
Elopement Rate		0.40	0.32	0.85	0.55	0.10	0.21	0.11	0.87	0.23	0.11	0.22	0.50	0.42	0.13	Figure 8
Selected Types of Incidents	Physical Assault			26	30	43	44	31	28	46	36	41	61	39		Figure 9
	Psych Emergency			30	27	30	26	27	23	48	24	14	31	28		
	Fall			20	15	33	27	18	18	20	22	24	20	22		
	Injury***			29	37	46	49	28	23	42	26	28	38	35		
Patient Injury Rate***												0.00	0.76	0.33	0.39	Figure 10
Patients with Major Injuries***												0	6	0		
Total Patients Injured***		13	29	15	21	25	25	17	14	34	21	16	40	3		
Total Staff Injured***		9	8	17	18	21	18	12	12	9	12	22	16	15		Figure 11
Medication Variance Rate		1.41	1.28	0.74	1.54	1.26	1.15	1.99	0.65	0.91	2.34	0.22	2.52	1.32		Figure 12
Adverse Drug Reaction Rate		1.00	0.00	1.17	0.88	0.31	1.15	0.55	0.76	0.68	0.78	1.11	0.63	6.92		Figure 13
Emergency STAT Med Orders Administered Involuntarily (EIM)										18	12	13	24	15		Figure 14
Unique EIM Events										10	8	4	12	9		
Unique Patients given EIM										5	7	2	9	6		
Percent of Missing Documentation of Medication Administration		1.15%	1.14%	1.22%	0.76%	0.64%	0.57%	0.57%	0.46%	0.47%	0.29%	0.35%	0.44%	0.68%		Figure 14
Percent of Patients Restrained		1.4%	0.0%	0.3%	0.0%	0.6%	0.6%	0.0%	0.9%	0.9%	0.6%	0.3%	0.0%	0.5%	3.6%	Figure 15
Percent of Patients Secluded		0.0%	0.0%	0.9%	0.9%	0.8%	1.1%	0.9%	0.6%	0.6%	1.2%	0.6%	0.6%	0.7%	2.6%	
Restraint Hours Rate		0.03	0.00	0.00	0.00	0.01	0.02	0.00	0.02	0.01	0.03	0.00	0.00	0.01	0.42	Figure 16
Seclusion Hours Rate		0.00	0.00	0.01	0.01	0.01	0.01	0.01	0.01	0.02	0.03	0.01	0.01	0.01	0.55	

* National Public Rate, NASMHPD Research Institute

** Percentage of patients returning within 30 days of discharges that occurred during month

Injury is broadly defined to include any type of injuries regardless of the cause or severity level. The total number of patients or staff injured represents all of the reported injuries including minor injuries treated with first aid alone. However, the patient injury rate considers only the number of patient injuries that required beyond first-aid level treatment based on the NRI definition and the patient injury rate is the number of 'major' patient injuries per every 1000 inpatient days. The patient major injury data became available in January 2011.

Performance Related Information for Staff & Managers

3. Unusual Incident & Medication

Data Source: UI DB, ADR DB, and Avatar

Updated as of 03/11/11

Category	Mar-10	Apr-10	May-10	Jun-10	Jul-10	Aug-10	Sep-10	Oct-10	Nov-10	Dec-10	Jan-11	Feb-11	Monthly Average	Total (12mths)	NPR* (Dec-09)
Total Unusual Incidents**	113	121	207	172	211	220	211	207	222	187	215	215	192		
Total Major Unusual Incidents			138	113	142	143	116	101	168	125	143	145	133		
Patient Involved UI Only**	106	111	184	153	193	202	197	197	206	173	196	207	177		
<i>Patient UI Rate</i>	<i>10.64</i>	<i>11.80</i>	<i>19.56</i>	<i>16.80</i>	<i>20.20</i>	<i>21.19</i>	<i>21.74</i>	<i>21.38</i>	<i>23.41</i>	<i>19.26</i>	<i>21.70</i>	<i>26.12</i>	<i>19.32</i>		
Unique Patients Involved in UI**	98	102	118	95	110	117	101	112	108	108	108	129	109		
Selected Types of Incidents	Physical Assault		26	30	43	44	31	28	46	36	41	61	39		
	Psych Emergency		30	27	30	26	27	23	48	24	14	31	28		
	Fall		20	15	33	27	18	18	20	22	24	20	22		
	Injury		29	37	46	49	28	23	42	26	28	38	35		
Total Patients Injured***	13	29	15	21	25	25	17	14	34	21	16	40	23	270	
Patients with Major Injuries***											0	6	3	6	
<i>Patient Injury Rate***</i>											<i>0.00</i>	<i>0.76</i>	<i>0.33</i>		<i>0.39</i>
Total Staff Injured**	9	8	17	18	21	18	12	12	9	12	22	16	15		
Total UL Incident Reports	3	3	7	5	2	3	1	8	6	1	4	3	4	46	
Total ULs Documented in Avatar	4	3	8	5	1	2	1	8	2	1	2	4	3		
<i>Elopement Rate</i>	<i>0.40</i>	<i>0.32</i>	<i>0.85</i>	<i>0.55</i>	<i>0.10</i>	<i>0.21</i>	<i>0.11</i>	<i>0.87</i>	<i>0.23</i>	<i>0.11</i>	<i>0.22</i>	<i>0.50</i>	<i>0.42</i>		<i>0.13</i>
Total Medication Variance (MV) Incidents Reported **	14	12	7	14	12	11	18	6	8	21	2	20	12	145	
<i>MV Rate</i>	<i>1.41</i>	<i>1.28</i>	<i>0.74</i>	<i>1.54</i>	<i>1.26</i>	<i>1.15</i>	<i>1.99</i>	<i>0.65</i>	<i>0.91</i>	<i>2.34</i>	<i>0.22</i>	<i>2.52</i>	<i>1.32</i>		
Total Adverse Drug Reactions (ADR) Reported	10	0	11	8	3	11	5	7	6	7	10	5	7	83	
<i>ADR Rate</i>	<i>1.00</i>	<i>0.00</i>	<i>1.17</i>	<i>0.88</i>	<i>0.31</i>	<i>1.15</i>	<i>0.55</i>	<i>0.76</i>	<i>0.68</i>	<i>0.78</i>	<i>1.11</i>	<i>0.63</i>	<i>0.75</i>		
Total Routine Medication Administrations Scheduled	118733	112799	112575	109765	114363	115810	109712	111397	104863	107095	105329	93288		1315729	
Total Missing Documentations	1361	1288	1370	835	729	659	626	512	490	309	365	413		8957	
<i>Percent of Missing Documentation</i>	<i>1.15%</i>	<i>1.14%</i>	<i>1.22%</i>	<i>0.76%</i>	<i>0.64%</i>	<i>0.57%</i>	<i>0.57%</i>	<i>0.46%</i>	<i>0.47%</i>	<i>0.29%</i>	<i>0.35%</i>	<i>0.44%</i>		<i>0.68%</i>	
Total Patients with >=3 STATs	28	23	41	30	33	40	28	31	29	25	44	53	34		
Emergency STAT Med Orders Administered Involuntarily (EIM)								10	18	12	13	24	15		
Unique EIM Events								9	10	8	4	12	9		
Unique Patients given EIM								7	5	7	2	9	6		

* National Public Rate, NASMHPD Research Institute

** Numbers may change if any additional UI report is made after the data run date from UI database (around the 15th of the following month).

Performance Related Information for Staff & Managers

4. Restraint & Seclusion

Data Source: Restraint/Seclusion Log and UI DB (for # of total events and patients) and Avatar (for patient days/hours)

Updated as of 03/11/11

Category	Mar-10	Apr-10	May-10	Jun-10	Jul-10	Aug-10	Sep-10	Oct-10	Nov-10	Dec-10	Jan-11	Feb-11	Monthly Average	Total (12mths)	NPR* (Dec-09)
Number of Restraint Events	6	0	1	0	2	3	0	3	4	6	1	0	2.2	26	
Number of Unique Patients Restrained	5	0	1	0	2	2	0	3	3	2	1	0	1.6		
Percentage of Patients Restrained	1.4%	0.0%	0.3%	0.0%	0.6%	0.6%	0.0%	0.9%	0.9%	0.6%	0.3%	0.0%	0.5%		3.6%
Total Restraint Hours (h:mm)	6:45	0:00	0:45	0:00	2:05	4:15	0:00	3:20	2:46	7:03	0:20	0:00	2:16	27:19	
Restraint Hours Rate	0.03	0.00	0.00	0.00	0.01	0.02	0.00	0.02	0.01	0.03	0.00	0.00	0.01		0.42
Number of Seclusion Events	0	0	4	4	3	4	3	2	2	6	3	2	2.8	33	
Number of Unique Patients Secluded	0	0	3	3	3	4	3	2	2	4	2	2	2.3		
Percentage of Patients Secluded	0.0%	0.0%	0.9%	0.9%	0.8%	1.1%	0.9%	0.6%	0.6%	1.2%	0.6%	0.6%	0.7%		2.6%
Total Seclusion Hours (h:mm)	0:00	0:00	2:55	1:22	3:05	2:10	1:15	1:20	4:57	7:10	2:10	2:25	2:24	28:49	
Seclusion Hours Rate	0.00	0.00	0.01	0.01	0.01	0.01	0.01	0.01	0.02	0.03	0.01	0.01	0.01		0.55

* National Public Rate, NASMHPD Research Institute

Performance Related Information for Staff & Managers

5. Major Incidents by Incident Location/Unit

Data Source: UI DB

Updated as of 03/11/11

Category		Mar-10	Apr-10	May-10	Jun-10	Jul-10	Aug-10	Sep-10	Oct-10	Nov-10	Dec-10	Jan-11	Feb-11	Monthly Average	Total (9mths)	Percent
Total Unusual Incidents				207	172	211	220	211	207	222	187	215	215	207	2067	
Total Major Incidents*				138	113	142	143	116	101	168	125	143	145	133	1334	100%
Major Incident Location	1A			13	5	17	21	14	11	12	9	11	5	12	118	9%
	1B			9	3	7	7	12	13	12	6	6	9	8	84	6%
	1C			5	5	1	5	6	7	3	13	8	15	7	68	5%
	1D			20	19	13	18	19	11	39	31	9	10	19	189	14%
	1E			6	14	20	24	6	7	11	8	16	31	14	143	11%
	1F			17	9	14	9	11	9	12	12	12	20	13	125	9%
	1G			6	7	6	5	12	5	10	9	11	9	8	80	6%
	2A			7	5	4	7	6	2	3	4	6	3	5	47	4%
	2B			1	4	8	1	0	4	6	2	4	0	3	30	2%
	2C			4	3	10	4	3	5	10	10	19	15	8	83	6%
	2D			9	7	16	6	11	9	20	5	10	12	11	105	8%
	ANXA/B			9	2	2	5	2	2	3	0	4	0	3	29	2%
	TLC			11	14	14	12	4	7	10	3	12	9	10	96	7%
	Other			21	16	10	19	10	9	17	13	15	7	14	137	10%
Total Physical Assault Incidents				26	30	43	44	31	28	46	36	41	61	39	386	100%
Assault Incident Location	1A			1	1	3	2	2	1	5	2	4	1	2	22	6%
	1B			2	0	0	1	2	2	0	0	0	1	1	8	2%
	1C			2	1	0	3	2	4	2	5	4	3	3	26	7%
	1D			6	2	5	5	6	1	8	7	3	6	5	49	13%
	1E			1	4	8	12	3	1	5	2	4	17	6	57	15%
	1F			4	9	9	7	4	6	4	4	5	12	6	64	17%
	1G			1	3	3	4	3	2	7	4	6	8	4	41	11%
	2A			1	0	0	1	1	0	1	2	0	0	1	6	2%
	2B			0	2	1	0	0	0	2	1	0	0	1	6	2%
	2C			1	0	1	2	1	1	0	2	7	3	2	18	5%
	2D			3	3	6	3	5	5	10	4	5	5	5	49	13%
	ANXA/B			0	0	1	0	0	1	1	0	0	0	0	3	1%
	TLC			1	5	6	2	2	3	1	3	2	3	3	28	7%
	Other			3	0	0	2	0	1	0	0	1	2	1	9	2%

Performance Related Information for Staff & Managers

5. Major Incidents by Incident Location/Unit

Data Source: UI DB

Updated as of 03/11/11

Category	Mar-10	Apr-10	May-10	Jun-10	Jul-10	Aug-10	Sep-10	Oct-10	Nov-10	Dec-10	Jan-11	Feb-11	Monthly Average	Total (9mths)	Percent	
Total Fall Incidents			20	15	33	27	18	18	20	22	24	20	22	217	100%	
Fall Incident Location	1A		6	2	10	11	5	7	5	3	5	2	6	56	26%	
	1B		3	0	3	1	2	5	3	2	3	2	2	24	11%	
	1C		0	0	0	0	0	0	1	5	0	2	1	8	4%	
	1D		0	2	0	2	1	1	0	3	1	1	1	11	5%	
	1E		1	1	2	0	0	0	1	0	1	3	1	10	5%	
	1F		2	0	1	1	2	0	1	0	0	0	0	1	7	3%
	1G		0	2	1	0	1	0	0	1	1	1	0	1	6	3%
	2A		0	1	1	2	1	0	0	1	1	1	1	1	8	4%
	2B		0	1	3	1	0	2	0	0	0	0	0	1	7	3%
	2C		0	1	1	0	1	1	1	4	2	2	5	2	17	8%
	2D		2	0	6	2	0	1	4	0	1	1	1	2	17	8%
	ANXA/B		0	2	0	1	2	0	0	0	0	0	0	1	5	2%
	TLC		2	1	5	4	0	0	1	0	3	4	4	2	20	9%
	Other		4	2	0	2	3	0	1	4	4	4	1	2	21	10%
Total Injury Incidents			29	37	46	49	28	23	42	26	28	38	35	346	100%	
Injury Incident Location	1A		4	1	3	7	4	3	5	1	2	0	3	30	9%	
	1B		2	0	2	2	1	3	2	0	1	2	2	15	4%	
	1C		0	0	0	3	0	3	2	3	2	0	1	13	4%	
	1D		3	5	6	5	6	0	12	8	1	2	5	48	14%	
	1E		1	4	10	7	3	1	3	1	2	7	4	39	11%	
	1F		4	5	5	5	2	2	6	3	3	9	4	44	13%	
	1G		1	5	2	3	1	0	3	2	3	5	3	25	7%	
	2A		0	1	1	2	1	0	0	3	0	0	0	1	8	2%
	2B		1	3	3	0	0	1	2	0	1	0	0	1	11	3%
	2C		1	1	1	2	2	2	2	1	0	3	3	2	16	5%
	2D		2	2	6	4	2	3	4	2	1	6	6	3	32	9%
	ANXA/B		0	1	0	1	2	1	0	0	0	0	0	1	5	1%
	TLC		1	5	4	4	0	2	0	1	3	2	2	2	22	6%
	Other		9	4	3	4	4	4	2	2	2	6	2	4	38	11%

* Not every incident is a major incident. This counts only those major incidents that required extensive investigations from the risk manager.

Performance Related Information for Staff & Managers

6. Demographic Information of Individuals in Care

Data Source: Avatar

Updated as of 03/11/11

Category	Sub-group	Mar-10	Apr-10	May-10	Jun-10	Jul-10	Aug-10	Sep-10	Oct-10	Nov-10	Dec-10	Jan-11	Feb-11	Monthly Average	Percent*
Total Active (on Roll) at End of Month*								311	307	303	301	299	275	299	
Gender	Female							86	80	75	74	71	66	75	25.2%
	Male							225	227	228	227	228	209	224	74.8%
Median Age (Years)								55 yrs	55 yrs	55 yrs	55 yrs	54 yrs	55 yrs	55 yrs	
Age	<30 years old							23	18	14	15	14	16	17	5.6%
	>=30 and <40 years old							21	22	24	30	31	23	25	8.4%
	>=40 and <50 years old							59	64	62	56	58	47	58	19.3%
	>=50 and <60 years old							119	120	119	118	114	114	117	39.2%
	>=60 years old							89	83	84	82	82	75	83	27.6%
Legal Status of Individuals on Roll at End of Month	Emergency							36			26	19	19	25	8.4%
	Inpatient Commitment							35			33	35	32	34	11.3%
	Outpatient Commitment							31			30	32	29	31	10.2%
	Voluntary							43			46	43	41	43	14.4%
	Civil Sub-total							145			135	129	124	133	44.5%
Legal Status of Individuals on Roll at End of Month	DC Exam							52			51	55	42	50	16.7%
	Mentally Incompetent							5			3	3	2	3	1.1%
	NGBRI - DC							91			94	94	93	93	31.1%
	NGBRI - US							10			10	10	9	10	3.3%
	NGBIR - VI							2			2	2	2	2	0.7%
	Dual Commitment							1			1	1	1	1	0.3%
	Non-Protesting							1			1	1	1	1	0.3%
	Sexual Psychopath (Miller Act)							4			4	4	4	4	1.3%
Forensic Sub-total							166			166	170	151	163	54.5%	
Median LOS (Days)								811 d			903 d	934 d	1091 d	935 d	
Average LOS (Days)								2967 d			3099 d	3133 d	3282 d	3120 d	
Length of Stay	<30 Days							28			27	32	30	29	9.8%
	>=30 ~ <365 Days							82			79	74	60	74	24.6%
	>= 1 Year & < 2 Years							38			30	29	27	31	10.4%
	>= 2 Years & < 5 Years							44			48	47	45	46	15.4%
	>= 5 Years & < 20 Years							69			66	66	63	66	22.0%
	>= 20 Years							50			51	51	50	51	16.9%

* Counts the total number of individuals who are on the hospital roll at end of each month. This number serves as denominator to calculate percentage of each group.