

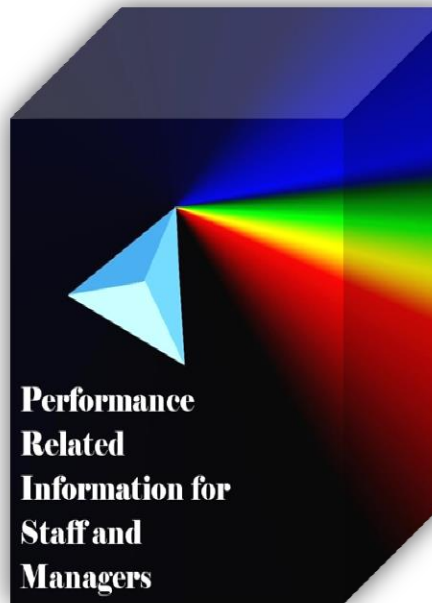
**Government of the District of Columbia
Department of Behavioral Health (DBH)**



Performance Related Information for Staff and Managers

**PRISM
JANUARY 2014**

Table of Contents



1.	Admissions to SEH	1
2.	Discharges from SEH.....	1
3.	Net Increase/Decrease by Legal Status for the Past 12 Months	1
4.	Average Daily Census	2
5.	Transfers	2
6.	30-Day Readmission Rate	2
7.	Unusual Incidents.....	3
8.	Patient-Involved Unusual Incidents.....	3
9.	Unusual Incidents by Severity	4
10.	Selected Types of Incidents	4
11.	Physical Assaults by Severity	5
12.	Patient Injuries	5
13.	Staff Injuries.....	5
14.	Percent of Patients Restrained or Secluded.....	6
15.	Restraint Hours Rate & Seclusion Hours Rate	6
16.	Eloperments	6
17.	Reported Medication Variance Events	7
18.	Reported Adverse Drug Reactions.....	7
19.	Percent of Missing Documentation on Med-Administration.....	8
20.	Number of STAT Events and Individuals Involved	8
21.	Demographics and Length of Stay	9

- Appendix 1) Table – Census, Admissions & Discharges*
- Appendix 2) Table – Key Performance Indicators*
- Appendix 3) Table – Unusual Incident & Medication*
- Appendix 4) Table – Restraint & Seclusion*
- Appendix 5) Table – Demographic Information of Individuals in Care*

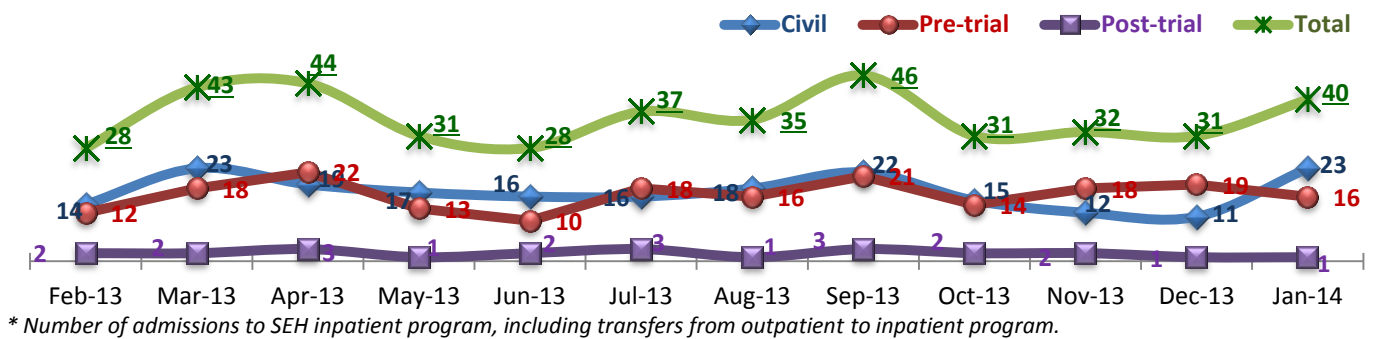
02/20/2014

Office of Statistics and Reporting (OSR)

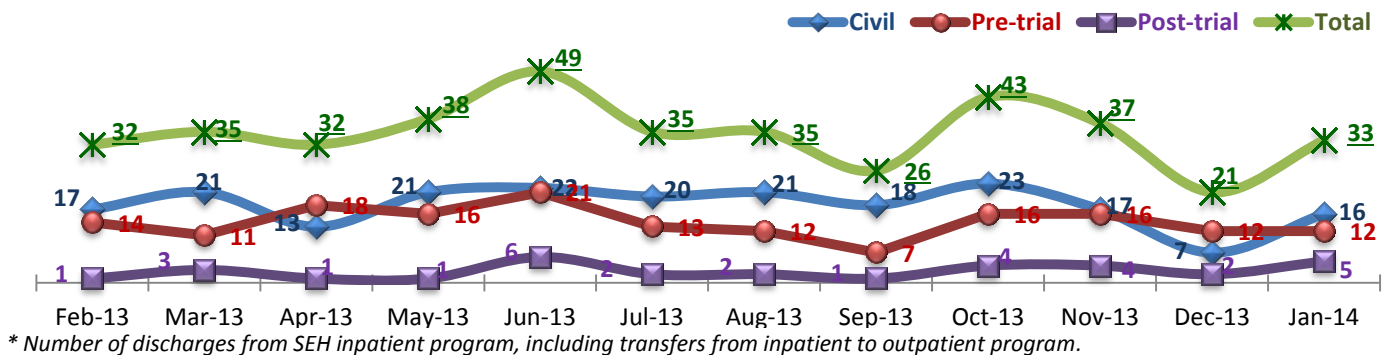
Key Trends: Admission, Discharge, Transfer, Census, and Readmissions (1~6)

- In January 2014, both admissions and discharges increased but admissions (40) exceeded discharges (33), contributing to the increase of average daily census to 274 in January 2014 from 258 in December 2013. This is the highest level since May 2013. Increased admissions and census also contributed to an increase of inter-unit transfers (27) because some of the admission units had to transfer some of their existing individuals to other units in order to accept new admissions.
- During the last 12 months, the total number of admissions (426) exceeded the total number of discharges (416) by 10; there were 29 more admissions than discharges for forensic pre-trial population while there were 10 and 9 more discharges than admissions for civil and forensic post-trial population, respectively.
- There is no individual who was re-admitted within 30-days from December discharges. The Hospital's 30-day readmission rate remained consistently far below the NPR (7.0%)¹ over the last 6 months.

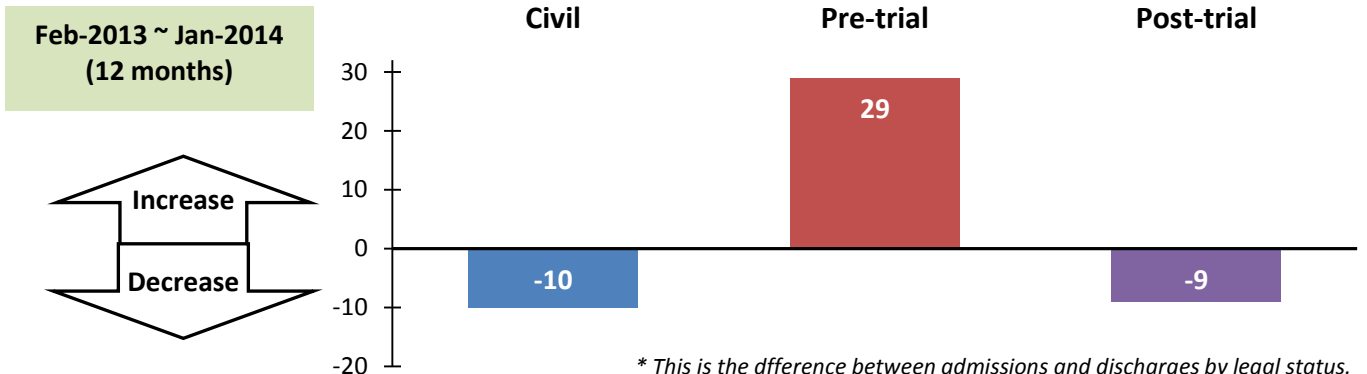
1. Admissions to SEH



2. Discharges from SEH

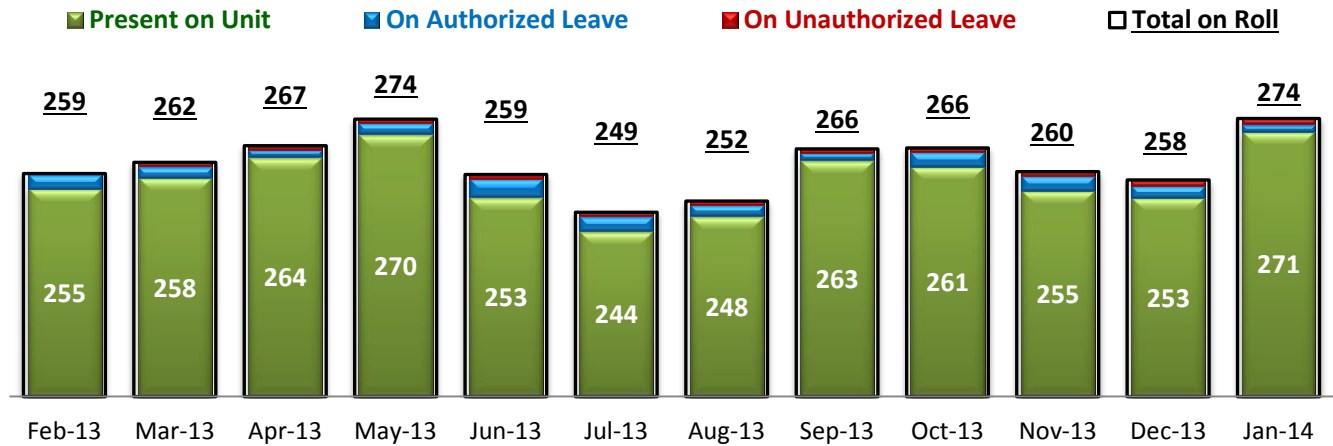


3. Net Increase/Decrease by Legal Status for the Past 12 Months



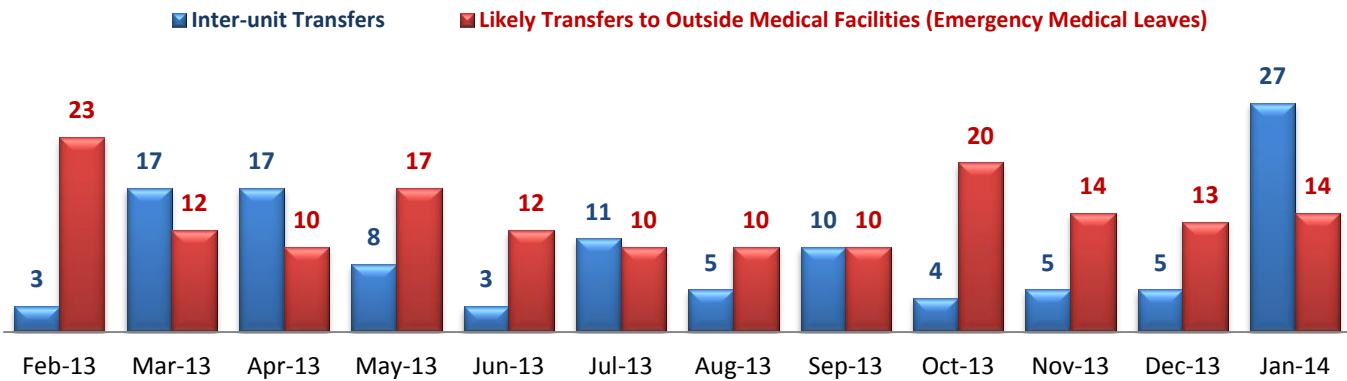
¹ NPR: National Public Rate as of June 2013 was published in November 2013 by National Association of State Mental Health Program Directors Research Institute (NRI), based on data collected from a number of state psychiatric hospitals nationwide.

4. Average Daily Census



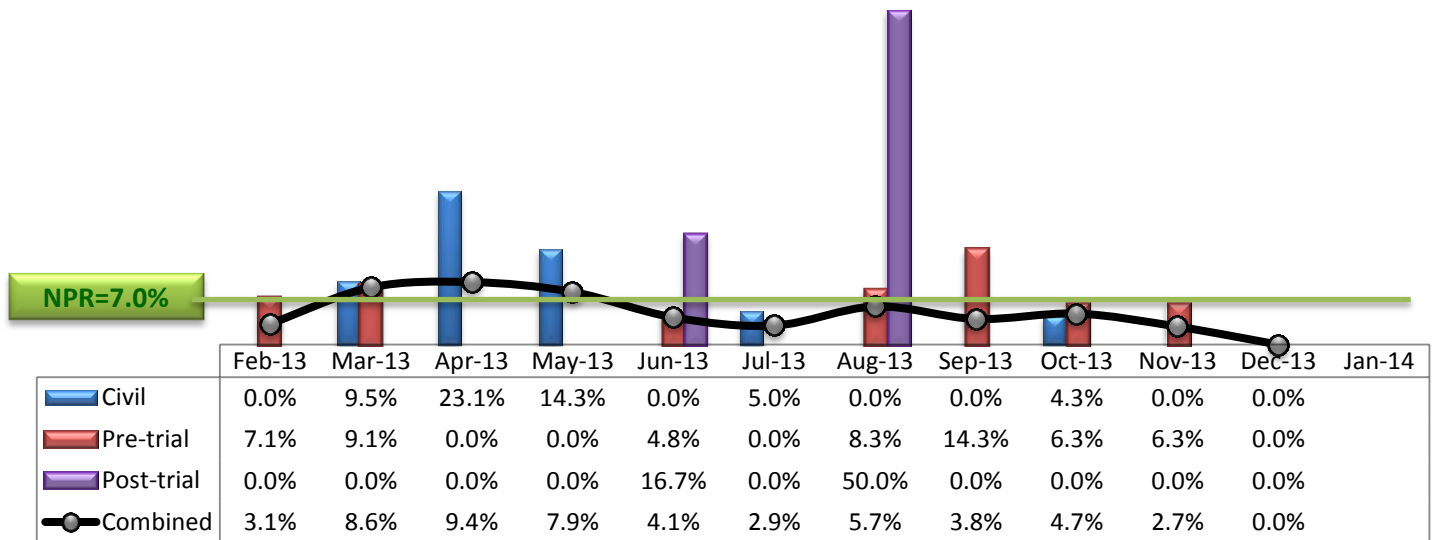
* Data above is the daily average number of individuals counted at 11:59 PM every day during each month.

5. Transfers



* Number of inter-unit transfers that occurred during month and number of emergency medical leaves that were initiated during month.

6. 30-Day Readmission Rate



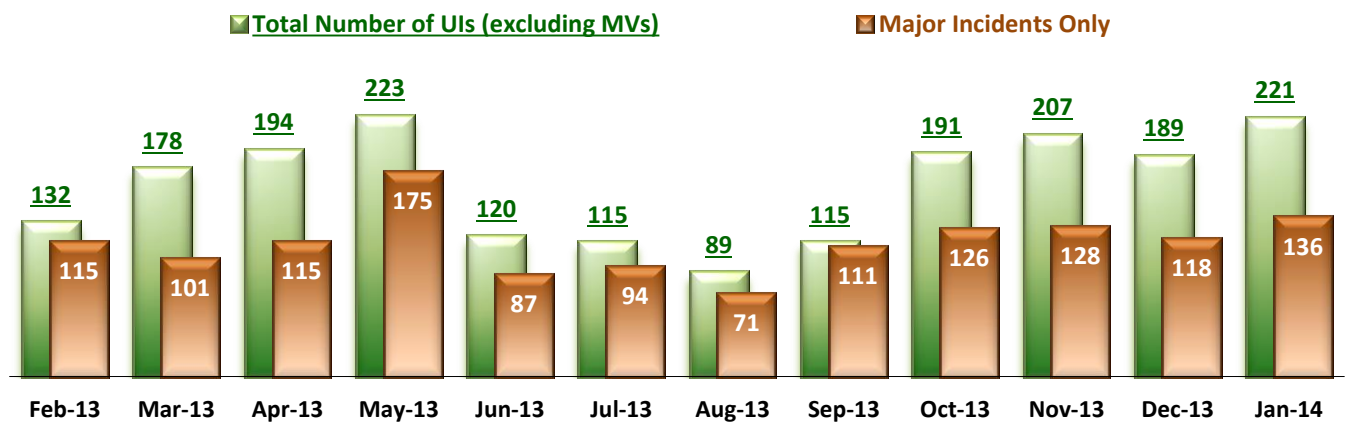
* Percent of discharges that returned to SEH within 30 days of discharges. It does not include those who may have been re-hospitalized at another psychiatric facility. This measure requires 30-day observation following discharge.

** The post-trial denominators (discharges) per month range only between one and six, making the monthly re-admission rate high when there is any. For example, in August 2013, there were two post trial discharges, of which one (50%) was readmitted within 30 days.

Key Trends: Unusual Incidents (7~16)

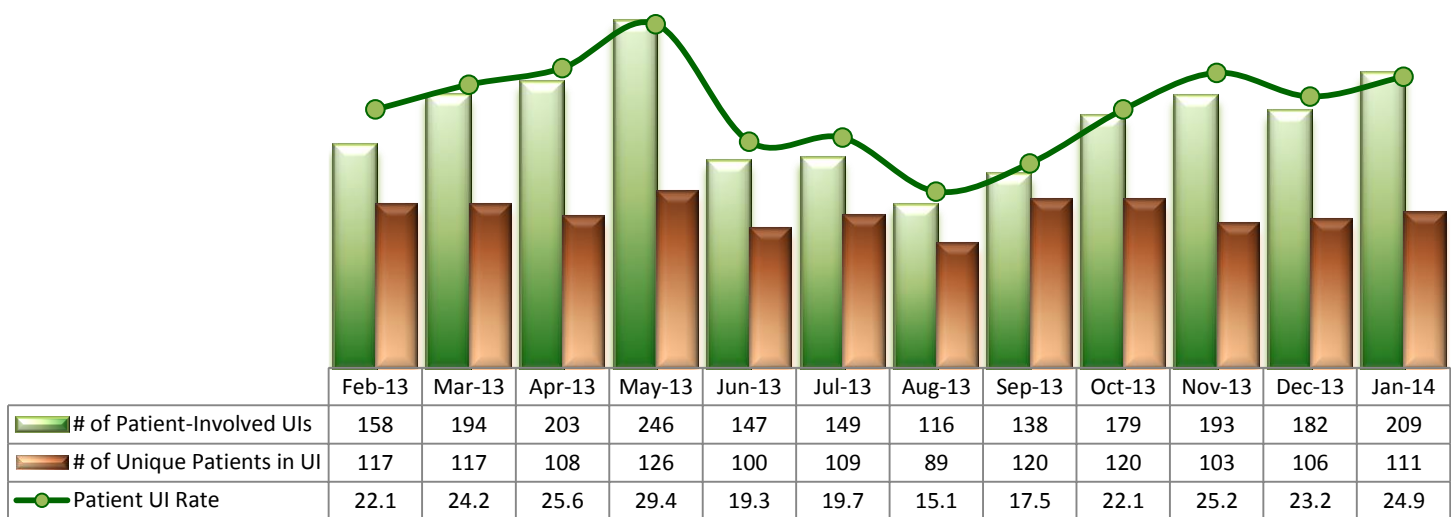
- The total number of unusual incidents (UIs) in January 2014 increased to 221, which is the highest level since May 2013. (This data does not include medication variances².)
- In January 2014, the frequency of assaults, psychiatric emergencies, falls and injuries all increased. Additionally, the number of UIs increased at all severity levels. Particularly, the number of high severity assaults (16) was the highest in the last 12 months; the 2nd highest was nine (9) in May 2013. There were several individuals with frequent aggressions in January 2014: eight individuals each triggered assaults more than three times.
- The number of staff injured declined in January 2014, but the patient injuries increased and the patient injury rate reflecting major injuries has been higher than NPR (0.38) over the past few months.
- In January 2014, use of restraints and seclusions both increased but remained far below NPR.

7. Unusual Incidents



* Numbers above represent all types of the unusual incidents (UIs) that were reported to the Risk Manager by PRISM publication date, including those that did not involve any patients.

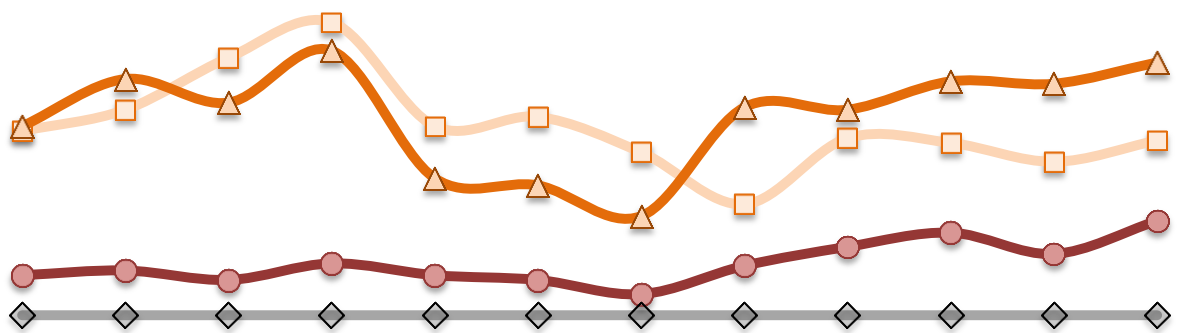
8. Patient-Involved Unusual Incidents



* The patient UI rate is the number of patient-involved unusual incidents reported for every 1000 inpatient days.

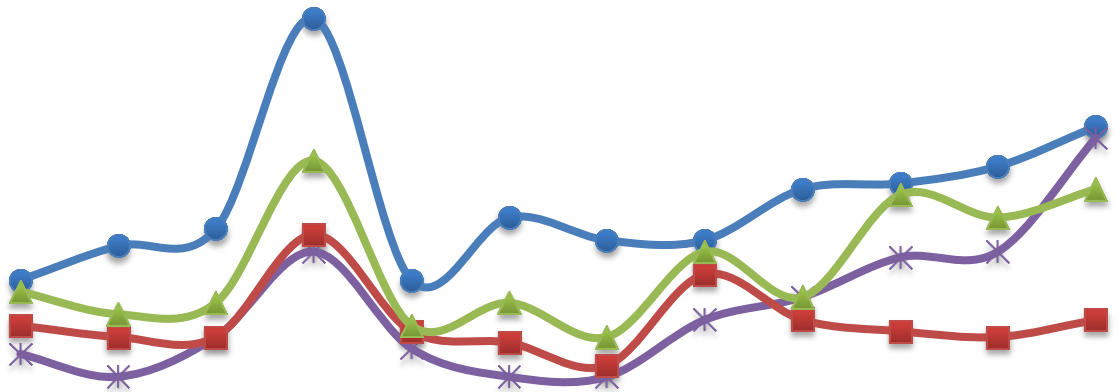
² According to the revised UI policy as of November 4, 2013, a medication variance (MV) incident is no longer considered to be an unusual incident. While the official number of UIs until October 2013 remains as including MVs, for PRISM publication, UI data for the past 12 months herein has been reanalyzed in order to show the UI trend in consistent logic.

9. Unusual Incidents by Severity



	Feb-13	Mar-13	Apr-13	May-13	Jun-13	Jul-13	Aug-13	Sep-13	Oct-13	Nov-13	Dec-13	Jan-14
1) Low	78	87	109	124	80	84	69	47	75	73	65	74
2) Medium	80	100	90	112	58	55	42	88	87	99	98	107
3) High	17	19	15	22	17	15	9	21	29	35	26	40
4) Catstrp	0	0	0	0	0	0	0	0	0	0	0	0
Total UI	175	206	214	258	155	154	120	156	191	207	189	221

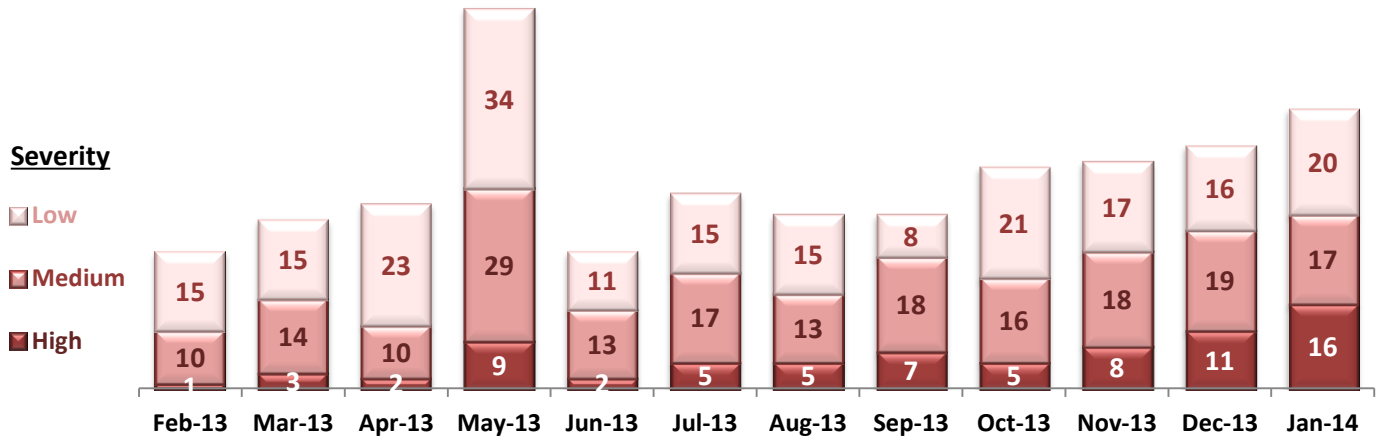
10. Selected Types of Incidents



	Feb-13	Mar-13	Apr-13	May-13	Jun-13	Jul-13	Aug-13	Sep-13	Oct-13	Nov-13	Dec-13	Jan-14
Physical Assault	26	32	35	72	26	37	33	33	42	43	46	53
Pysch Emerg.	13	9	16	31	14	9	9	19	23	30	31	51
Fall	18	16	16	34	17	15	11	27	19	17	16	19
Injury	24	20	22	47	18	22	16	31	23	41	37	42

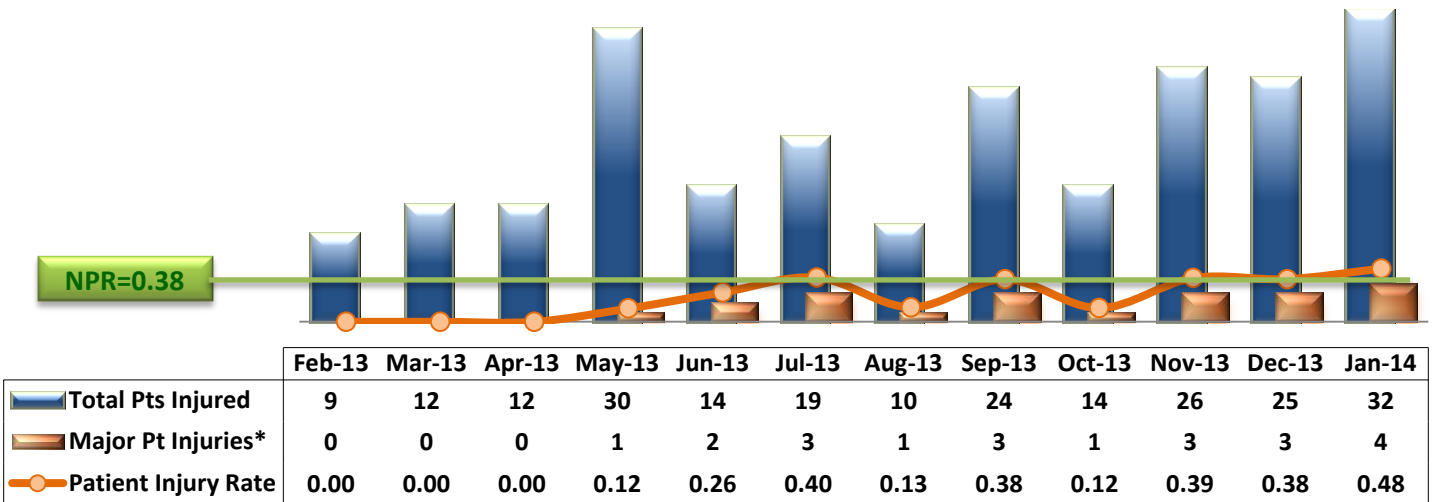
* These are incident types that are frequently reported. Some incidents may be counted in multiple categories. For example, a physical assault incident that accompanied psychiatric emergency and injury is counted under psychiatric emergency and injury as well as under physical assault. Injury is broadly defined to include any type of injuries regardless of the cause or severity level.

11. Physical Assaults by Severity



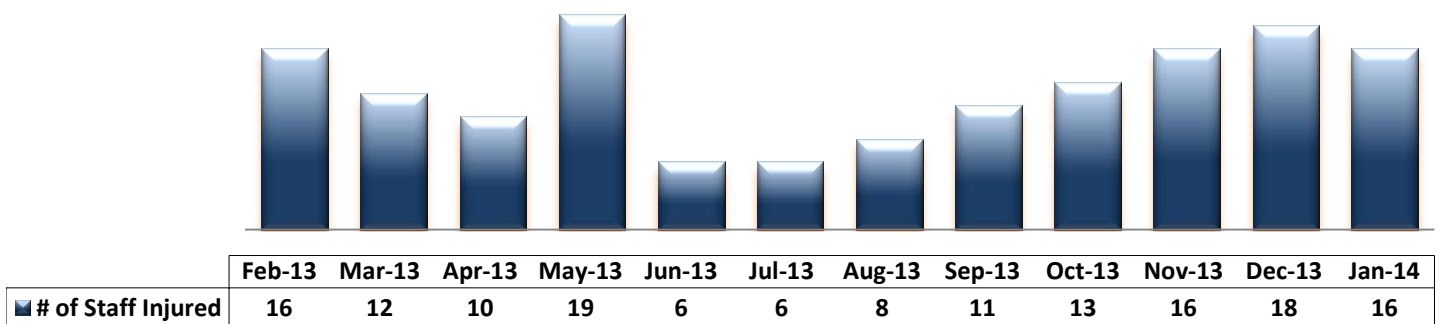
* Any physical assault that accompanies a code 13 or results in extensive injury needing off-unit treatment or transfer to ER is considered to be high severity, any physical assault that causes a minor injury that can be treated on unit is considered to be medium severity, and physical assault events that result in no injury are considered to be low severity.

12. Patient Injuries



* Injury is broadly defined to include any type of injuries regardless of the cause or severity level. The total number of patients injured represents all of the reported injuries including minor injuries treated with first aid alone. However, the patient injury rate considers only the number of patient injuries that required beyond first-aid level treatment based on the NRI definition and the patient injury rate is the number of 'major' patient injuries per every 1000 inpatient days

13. Staff Injuries

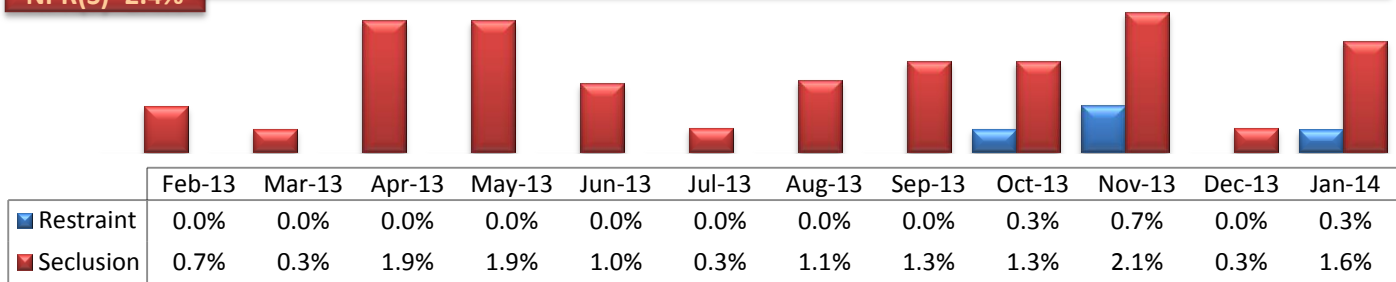


* Injury is broadly defined to include any type of injuries regardless of the cause or severity level. The total number of staff injured represents all of the reported staff injuries including minor injuries treated with first aid alone.

14. Percent of Patients Restrained or Secluded

NPR(R)=5.8%

NPR(S)=2.4%

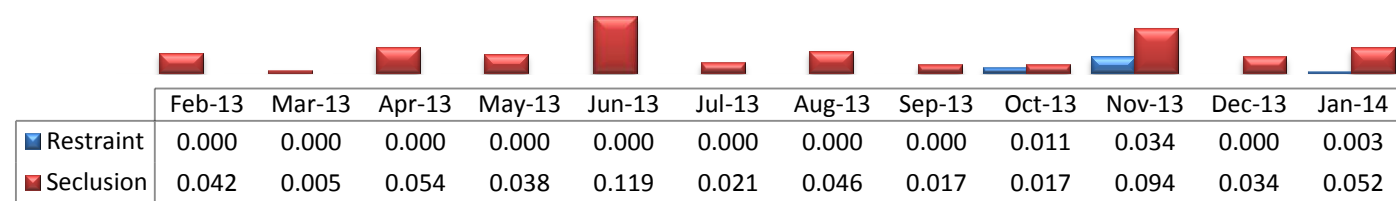


* Percent of unique patients who were restrained at least once and percent of unique patients who were secluded at least once. The denominator includes all individuals who were served in care >=1 day during month.

15. Restraint Hours Rate & Seclusion Hours Rate

NPR(R)=0.71

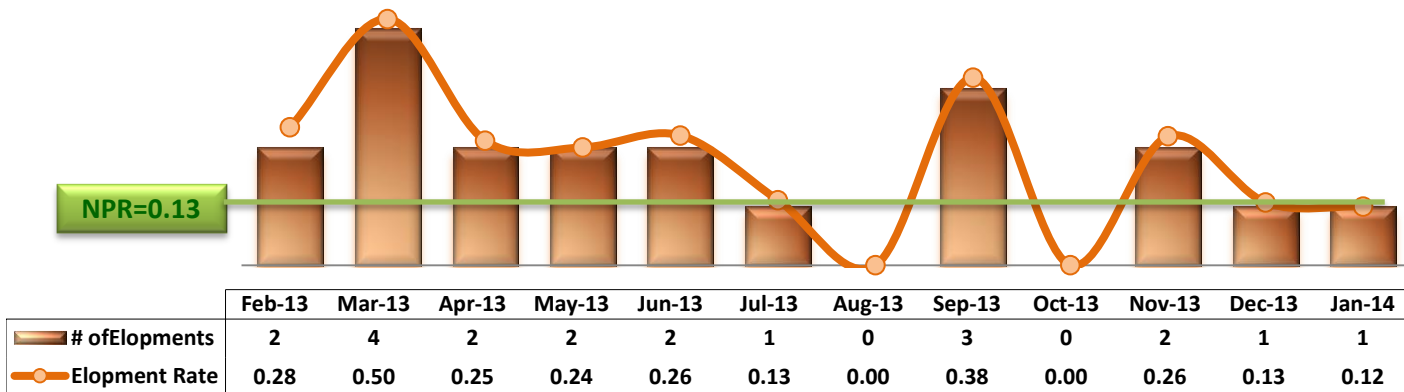
NPR(S)=0.44



* Restraint/Seclusion Hours Rate: Number of hours spent in restraint/seclusion for every 1000 inpatient hours.

16. Elopements

NPR=0.13

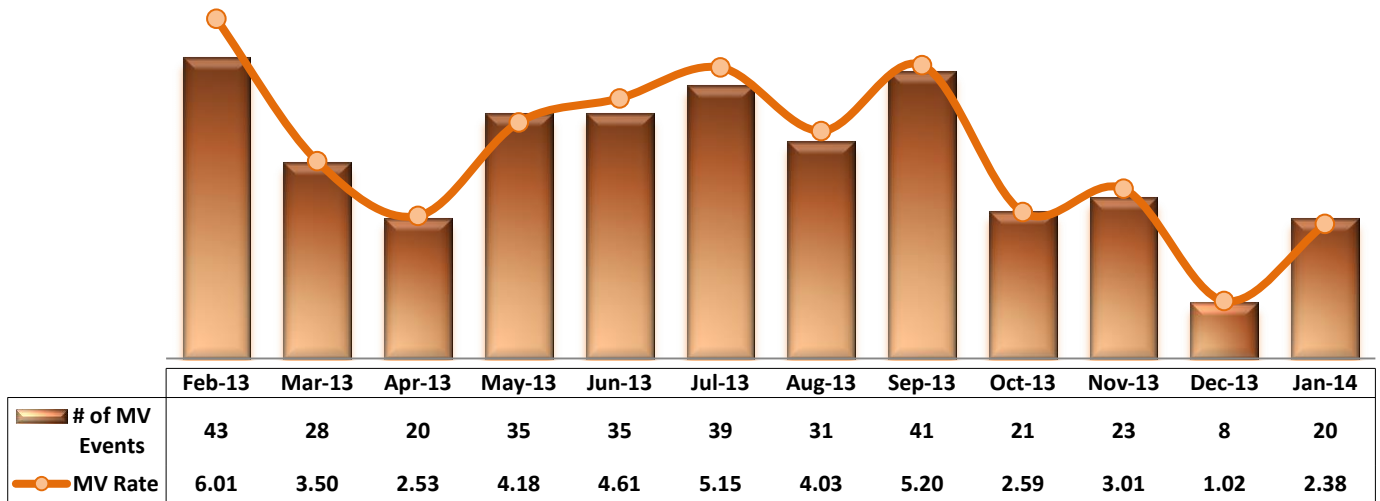


* It counts the total number of unauthorized leaves for any duration that were initiated during month and were recorded in Avatar. The elopement rate is the number of those unauthorized leaves that occurred for every 1000 inpatient days.

Key Trends: Medication Documentation, Medication Variance, ADR, and STAT (17~20)

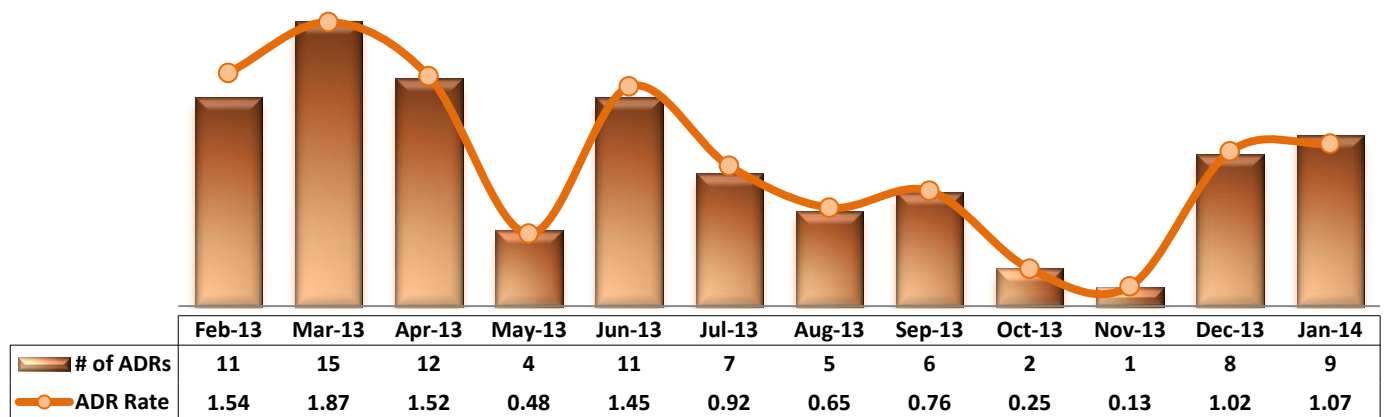
- The number of reported medication variance events increased to 20 in January 2014 from eight (8) in December, but it continued to be lower than the average in FY13 (26).
- The rate of missing documentation on medication administration continued to increase over the past 6 months and in January 2014 it recorded 0.79%, which is the highest since June 2010.
- The trend of STAT events often mirrors the trend of psychiatric emergency incidents; as the psych emergency incidents rose, the number of STAT events in January (67) more than doubled from December (32). Most noticeably, the number of individuals who had >=3 STAT events (8) was the highest in the last 12 months.

17. Reported Medication Variance Events



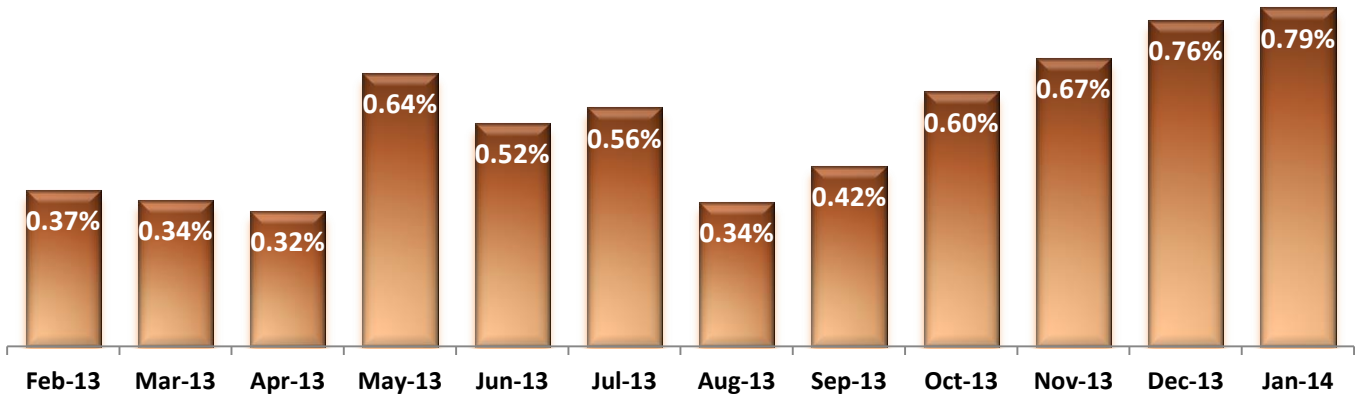
* MV Rate: Number of reported medication variance events that occurred for every 1000 inpatient days.

18. Reported Adverse Drug Reactions

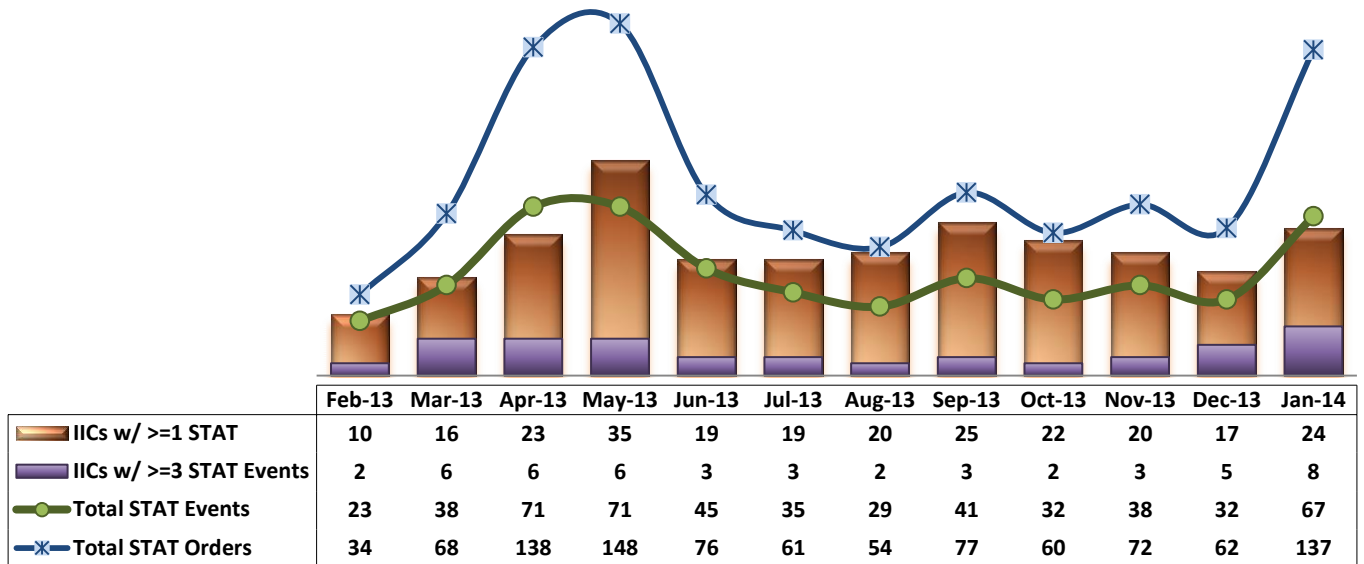


* ADR Rate: Number of reported adverse drug reaction events that occurred for every 1000 inpatient days.

19. Percent of Missing Documentation on Med-Administration



20. Number of STAT Events and Individuals Involved



Key Trends: Demographics, Legal Status, and Length of Stay (21)

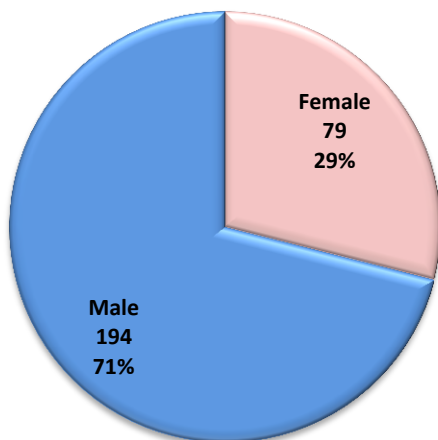
- The gender distribution slightly changes month by month but overall about 3 out of 10 individuals are female.
- Individuals in our care continued to age throughout the year. The percentage of those 60 years or older gradually increased over the last 12 months (33% in February 2013 to 37% in January 2014) although the median age remained at 56 years old for the past several months.
- The proportion of individuals in forensic pre-trial legal status increased for the past couple of months, reflecting more admissions and fewer discharges.
- The median length of stay (LOS) for individuals in care significantly dropped in the past few months, recording 568 days (19 months) as of January 31, 2014. The average LOS also shows a declining trend. This trend reflects the increased recent admissions and discharges of long-term residents. In February 2013, the percentage of those who had been in care for less than a year composed below 38% and the same group constituted more than 45% of those in care as of January 31, 2014. On the contrary, more than 40% had been in care for 5 years or longer a year ago and the percentage of this group dropped to 36% as of January 31, 2014.

21. Demographics and Length of Stay

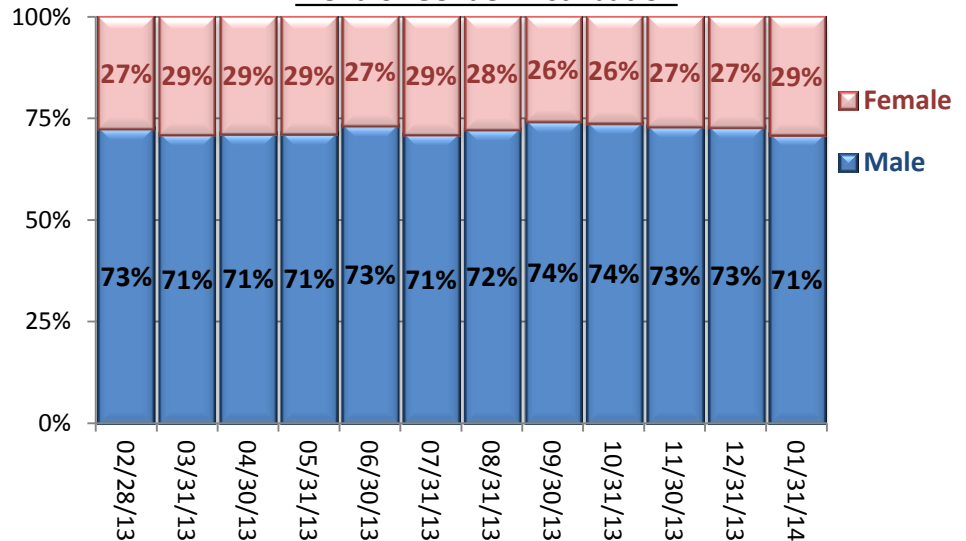
Gender Distribution

(1/31/14)

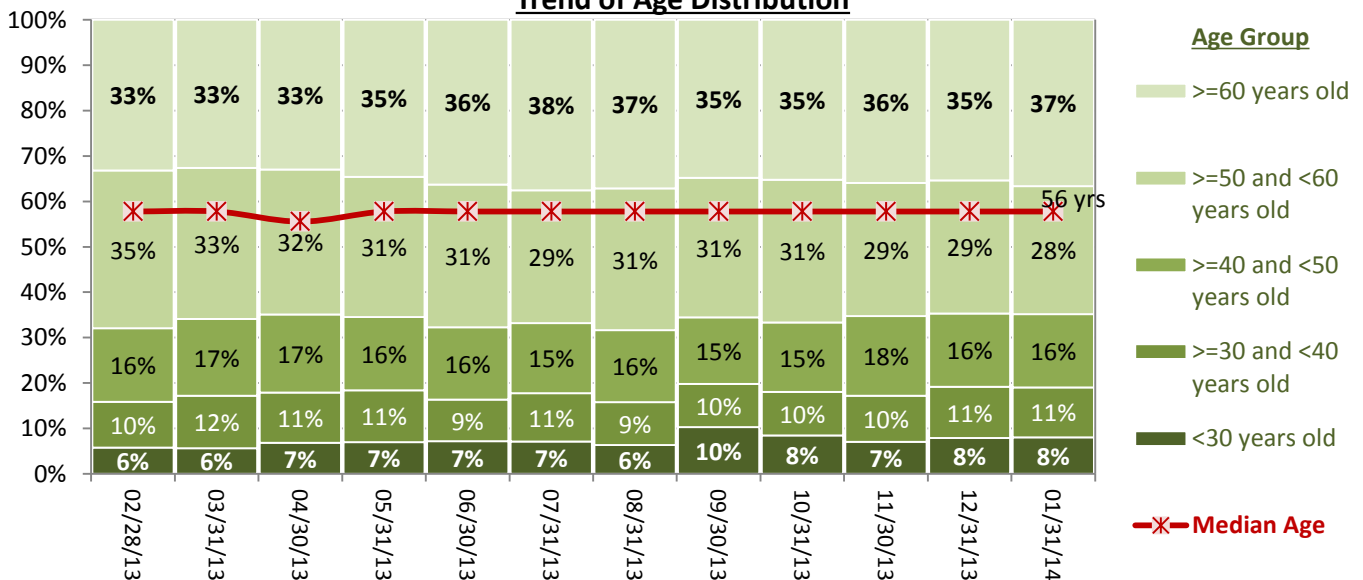
n=273



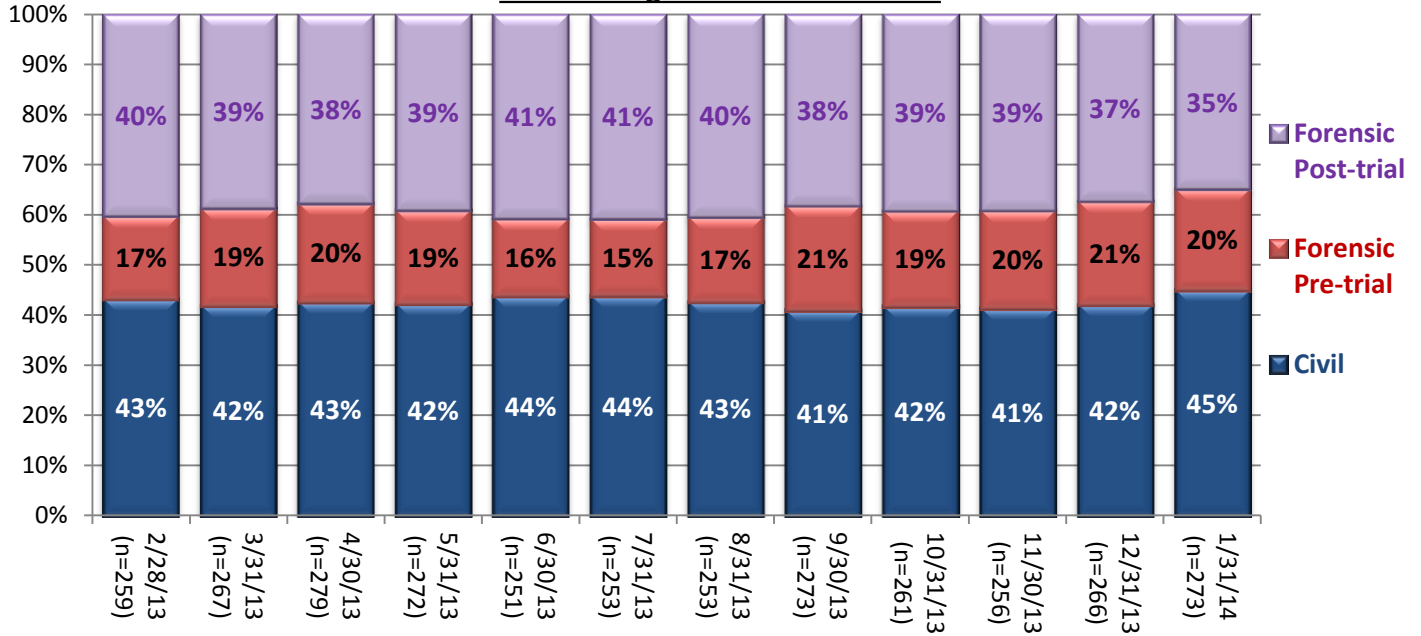
Trend of Gender Distribution



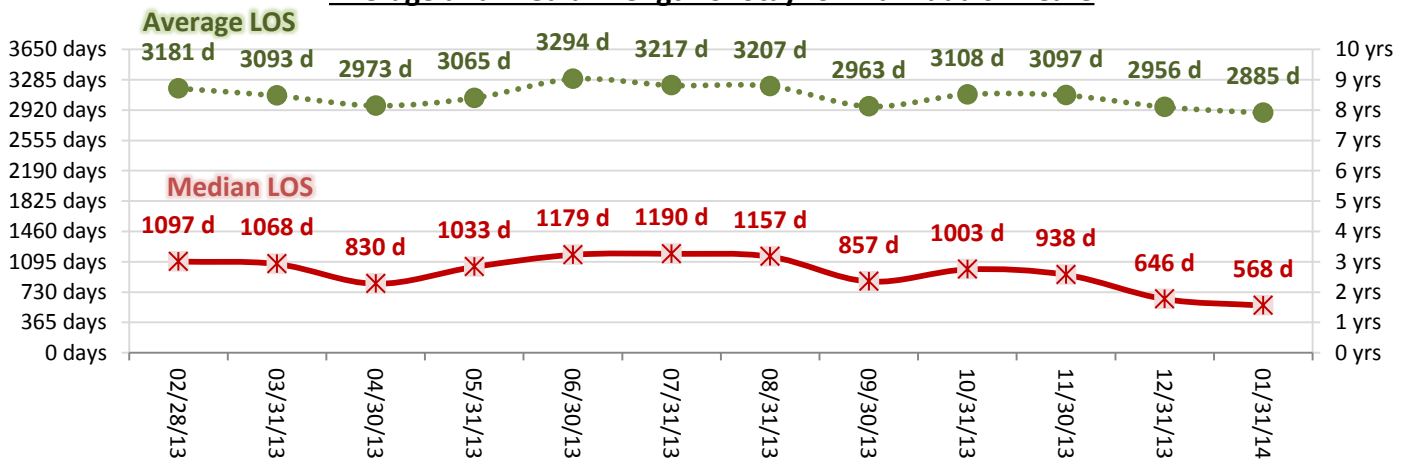
Trend of Age Distribution



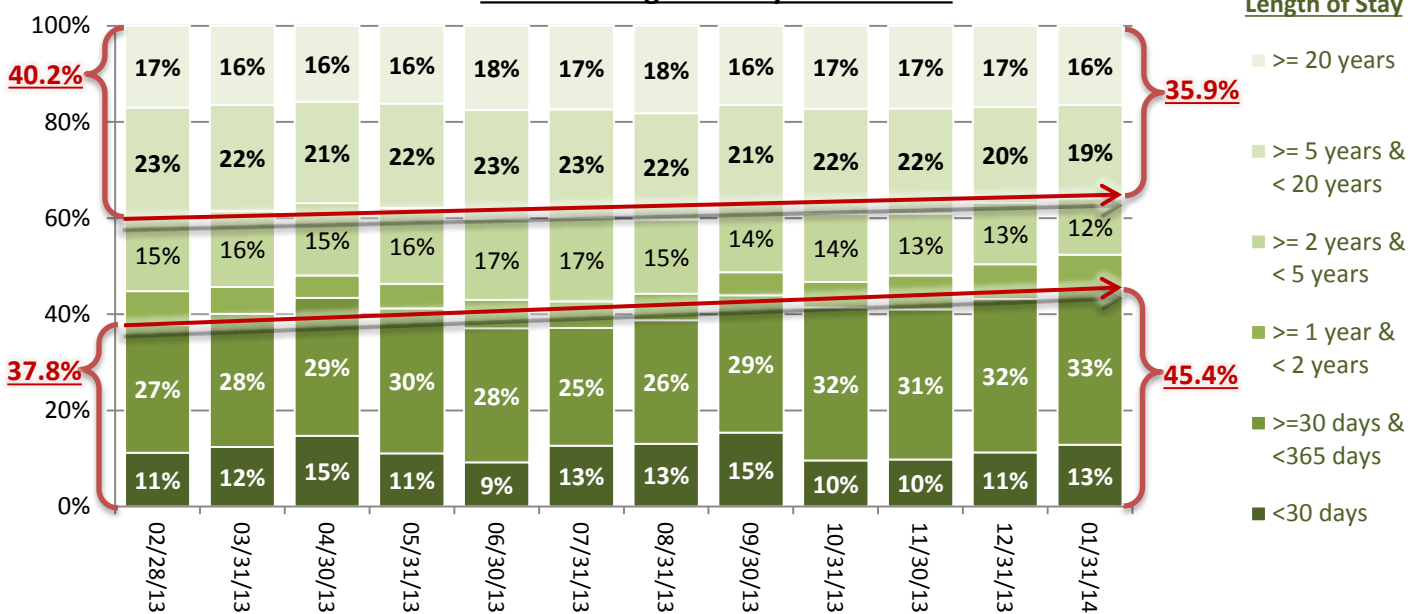
Trend of Legal Status Distribution



Average and Median Length of Stay for Individuals in Care



Trend of Length of Stay Distribution



Performance Related Information for Staff & Managers

1. Census, Admissions, Discharges & Transfers

Data Source: Avatar

Updated as of 02/19/14

Category	Feb-13	Mar-13	Apr-13	May-13	Jun-13	Jul-13	Aug-13	Sep-13	Oct-13	Nov-13	Dec-13	Jan-14	Monthly Average	Total (12mths)	Figure	
Admissions	Civil	14	23	19	17	16	16	18	22	15	12	11	23	17	206	Figure 1
	Pre-trial	12	18	22	13	10	18	16	21	14	18	19	16	16	197	
	Post-trial	2	2	3	1	2	3	1	3	2	2	1	1	2	23	
	Total	28	43	44	31	28	37	35	46	31	32	31	40	36	426	
Discharges	Civil	17	21	13	21	22	20	21	18	23	17	7	16	18	216	Figure 2
	Pre-trial	14	11	18	16	21	13	12	7	16	16	12	12	14	168	
	Post-trial	1	3	1	1	6	2	2	1	4	4	2	5	3	32	
	Total	32	35	32	38	49	35	35	26	43	37	21	33	35	416	
Net Increase During Month	Civil	-3	2	6	-4	-6	-4	-3	4	-8	-5	4	7		-10	Figure 3
	Pre-trial	-2	7	4	-3	-11	5	4	14	-2	2	7	4		29	
	Post-trial	1	-1	2	0	-4	1	-1	2	-2	-2	-1	-4		-9	
	Total	-4	8	12	-7	-21	2	0	20	-12	-5	10	7		10	
All Individuals on Roll at End of Month	259	267	279	272	251	253	253	273	261	256	266	273	264			
a. Present on Unit	254	261	273	267	246	247	251	268	256	250	262	269	259			
b. On AL	4	5	4	4	3	5	1	3	4	5	2	3	4			
c. On UL	1	1	2	1	2	1	1	2	1	1	2	1	1			
All Individuals on Roll: Daily Average during Month*	259	262	267	274	259	249	252	266	266	260	258	274	262			
a. Present on Unit	255	258	264	270	253	244	248	263	261	255	253	271	258		Figure 4	
b. On AL	4	3	2	3	5	4	3	2	4	4	3	2	4			
c. On UL	0	1	1	1	1	1	1	1	1	1	1	2	0			
Patient Days**	7152	8011	7918	8370	7597	7569	7693	7891	8101	7649	7844	8394	7849	94189		
Inter-Unit Transfers during Month	3	17	17	8	3	11	5	10	4	5	5	27	10	115	Figure 5	
Medical Leaves Initiated during Month	Emergency	23	12	10	17	12	10	10	20	14	13	14	14	165		
	Non-Emer	16	22	32	23	24	35	24	39	27	34	25	27	323		
	Total	39	34	42	40	36	45	34	32	59	41	47	39	488		
Non-Medical Leaves Initiated during Month	85	70	89	80	92	88	96	97	146	121	138	142	104	1244		
UL Initiated during Month	2	4	2	2	2	1	0	3	0	2	1	1	2	20		
Total Unique Patients Served during Month	298	294	310	310	299	286	285	299	299	291	287	306	297			
30 Day Readmission***	Civil	0	2	3	3	0	1	0	0	1	0	0	1	10		
	Pre-trial	1	1	0	0	1	0	1	1	1	1	0	1	7		
	Post-trial	0	0	0	0	1	0	1	0	0	0	0	0	2		
	Total	1	3	3	3	2	1	2	1	2	1	0	2	19		

* This is the average number of individuals served on a given day for the respective month. Due to rounding from average calculation, numbers from its subcategories a, b, & c may not add up to the total number on this row.

** It counts the number of patients who are present on the unit and excludes those on authorized or unauthorized leave at 11:59pm on a given day.

*** Number of patients returning within 30 days of discharges that occurred during month.

Performance Related Information for Staff & Managers

2. Key Performance Indicators

Data Source: UI DB, MV DB, ADR DB, Restraint/Seclusion Log, and Avatar

Updated as of 02/19/14

Category	Feb-13	Mar-13	Apr-13	May-13	Jun-13	Jul-13	Aug-13	Sep-13	Oct-13	Nov-13	Dec-13	Jan-14	Monthly Average	NPR* (Jun-13)	Figure
30 Day Readmit (Discharge Cohort)**	Civil	0.0%	9.5%	23.1%	14.3%	0.0%	5.0%	0.0%	0.0%	4.3%	0.0%	0.0%		5.1%	Figure 6
	Pre-trial	7.1%	9.1%	0.0%	0.0%	4.8%	0.0%	8.3%	14.3%	6.3%	6.3%	0.0%		4.5%	
	Post-trial	0.0%	0.0%	0.0%	0.0%	16.7%	0.0%	50.0%	0.0%	0.0%	0.0%	0.0%		6.8%	
	Combined	3.1%	8.6%	9.4%	7.9%	4.1%	2.9%	5.7%	3.8%	4.7%	2.7%	0.0%		5.0%	
Number of Unusual Incidents*	132	178	194	223	120	115	89	115	191	207	189	221	187		Figure 7
UI by Severity	Catastrophe	0	0	0	0	0	0	0	0	0	0	0	0		Figure 8
	High	17	19	15	22	17	15	9	21	29	35	26	40	22	
	Medium	80	100	90	112	58	55	42	88	87	99	98	107	85	
	Low	78	87	109	124	80	84	69	47	75	73	65	74	80	
Patient Unusual Incident Rate	28.1	27.8	27.2	33.7	24.0	24.8	19.2	22.3	0.0	0.0	0.0	0.0	25.7		Figure 9
Physical Assault Incident Rate	3.6	4.0	4.4	8.6	3.4	4.9	4.3	4.2	5.2	5.6	5.9	6.3	5.1		
Selected Types of Incidents	Physical Assault	26	32	35	72	26	37	33	33	42	43	46	53	40	Figure 10
	Psych Emergency	13	9	16	31	14	9	9	19	23	30	31	51	21	
	Fall	18	16	16	34	17	15	11	27	19	17	16	19	19	
	Injury	24	20	22	47	18	22	16	31	23	41	37	42	29	
Physical Assaults by Severity	High	1	3	2	9	2	5	5	7	5	8	11	16	6	Figure 11
	Medium	10	14	10	29	13	17	13	18	16	18	19	17	16	
	Low	15	15	23	34	11	15	15	8	21	17	16	20	18	
Patient Injury Rate***	0.00	0.00	0.00	0.12	0.26	0.40	0.13	0.38	0.12	0.39	0.38	0.48	0.22	0.38	Figure 12
Patients with Major Injuries***	0	0	0	1	2	3	1	3	1	3	3	4	2		
Total Patients Injured***	9	12	12	30	14	19	10	24	14	26	25	32	19		
Total Staff Injured***	16	12	10	19	6	6	8	11	13	16	18	16	13		Figure 13
Elopement Rate	0.28	0.50	0.25	0.24	0.26	0.13	0.00	0.38	0.00	0.26	0.13	0.12	0.24	0.13	Figure 16
Medication Variance Rate	6.01	3.50	2.53	4.18	4.61	5.15	4.03	5.20	2.59	3.01	1.02	2.38	3.65		Figure 17
Adverse Drug Reaction Rate	1.54	1.87	1.52	0.48	1.45	0.92	0.65	0.76	0.25	0.13	1.02	1.07	0.97		Figure 18
Missing Med-Admin Documentation	0.37%	0.34%	0.32%	0.64%	0.52%	0.56%	0.34%	0.42%	0.60%	0.67%	0.76%	0.79%	0.53%		Figure 19
Percent of Patients Restrained	0.0%	0.0%	0.0%	0.0%	0.0%	0.0%	0.0%	0.0%	0.3%	0.7%	0.0%	0.3%	0.1%	5.8%	Figure 14
Percent of Patients Secluded	0.7%	0.3%	1.9%	1.9%	1.0%	0.3%	1.1%	1.3%	1.3%	2.1%	0.3%	1.6%	1.2%	2.4%	
Restraint Hours Rate	0.000	0.000	0.000	0.000	0.000	0.000	0.000	0.000	0.011	0.034	0.000	0.003	0.004	0.71	Figure 15
Seclusion Hours Rate	0.042	0.005	0.054	0.038	0.119	0.021	0.046	0.017	0.017	0.094	0.034	0.052	0.045	0.44	

* National Public Rate, NASMHPD Research Institute, National Research Institute (NRI), Data as of June 2013, Published in November 2013.

** Percentage of patients returning within 30 days of discharges that occurred during month

*** Refer to the next page [UI & Medication]

Performance Related Information for Staff & Managers

3. Unusual Incident & Medication

Data Source: UI DB, MV DB, ADR DB, and Avatar

Updated as of 02/19/14

Category		Feb-13	Mar-13	Apr-13	May-13	Jun-13	Jul-13	Aug-13	Sep-13	Oct-13	Nov-13	Dec-13	Jan-14	Monthly Average	Total (12mths)	NPR* (Jun-13)
Unusual Incidents (excluding MV)**	Total UIs	175	206	214	258	155	154	120	156	191	207	189	221	187	2246	
	Major UIs Only	115	101	115	175	87	94	71	111	126	128	118	136	115	1377	
	Pt Involved UI Only	158	194	203	246	147	149	116	138	179	193	182	209	176	2114	
	Patient UI Rate	22.1	24.2	25.6	29.4	19.3	19.7	15.1	17.5	22.1	25.2	23.2	24.9	22.4		
	Unique Pts Involved in UI	117	117	108	126	100	109	89	120	120	103	106	111	111	1326	
Selected Types of Incidents	Physical Assault	26	32	35	72	26	37	33	33	42	43	46	53	40	478	
	Psych Emergency	13	9	16	31	14	9	9	19	23	30	31	51	21	255	
	Fall	18	16	16	34	17	15	11	27	19	17	16	19	19	225	
	Injury	24	20	22	47	18	22	16	31	23	41	37	42	29	343	
	Physical Assault Rate	3.6	4.0	4.4	8.6	3.4	4.9	4.3	4.2	5.2	5.6	5.9	6.3	5.1		
UI by Severity	Catastrophe	0	0	0	0	0	0	0	0	0	0	0	0	0	0	
	High	17	19	15	22	17	15	9	21	29	35	26	40	22	265	
	Medium	80	100	90	112	58	55	42	88	87	99	98	107	85	1016	
	Low	78	87	109	124	80	84	69	47	75	73	65	74	80	965	
Physical Assaults by Severity	High	1	3	2	9	2	5	5	7	5	8	11	16	6	74	
	Medium	10	14	10	29	13	17	13	18	16	18	19	17	16	194	
	Low	15	15	23	34	11	15	15	8	21	17	16	20	18	210	
	Total Patients Injured***	9	12	12	30	14	19	10	24	14	26	25	32	19	227	
	Patients with Major Injuries***	0	0	0	1	2	3	1	3	1	3	3	4	2	21	
	Patient Injury Rate***	0.00	0.00	0.00	0.12	0.26	0.40	0.13	0.38	0.12	0.39	0.38	0.48	0.22		0.38
	Total Staff Injured**	16	12	10	19	6	6	8	11	13	16	18	16	13		
	Total UL Incident Reports	2	3	2	2	1	4	1	3	1	2	2	0	2	23	
	Total UIs Documented in Avatar	2	4	2	2	2	1	0	3	0	2	1	1	2		
	Elopement Rate	0.28	0.50	0.25	0.24	0.26	0.13	0.00	0.38	0.00	0.26	0.13	0.12	0.24		0.13
	Med Variance (MV) Reports**	43	28	20	35	35	39	31	41	21	23	8	20	29	344	
	MV Rate	6.01	3.50	2.53	4.18	4.61	5.15	4.03	5.20	2.59	3.01	1.02	2.38	3.65		
	Adverse Drug Reactions Reports	11	15	12	4	11	7	5	6	2	1	8	9	8	91	
	ADR Rate	1.54	1.87	1.52	0.48	1.45	0.92	0.65	0.76	0.25	0.13	1.02	1.07	0.97		
	Total Med Administrations Scheduled	97488	108150	103057	107694	102644	102303	102848	101049	95559	101422	102249	108474		1232937	
	Total Missing Documentations	356	370	326	690	537	572	348	427	570	684	780	860		6520	
	Percent of Missing Documentation	0.37%	0.34%	0.32%	0.64%	0.52%	0.56%	0.34%	0.42%	0.60%	0.67%	0.76%	0.79%		0.53%	
	Total STAT Orders	34	68	138	148	76	61	54	77	60	72	62	137	82		Figure 17
	Total STAT Events****	23	38	71	71	45	35	29	41	32	38	32	67	44		
	Total Individuals Involved >=1 STAT	10	16	23	35	19	19	20	25	22	20	17	24	21		
	Total Patients with >=3 STAT Events	2	6	6	6	3	3	2	3	2	3	5	8	4		

* National Public Rate, NASMHPD Research Institute, National Research Institute (NRI), Data as of June 2013, Published in November 2013.

** Numbers may change if any additional UI report is made after the data run date from UI database (around the 15th of the following month); According to the revised UI policy as of November 4, 2013, a medication variance (MV) incident is no longer considered to be an unusual incident. While the official number of UIs until October 2013 remains as including MVs, for PRISM publication, UI data for the past 12 months herein has been reanalyzed in order to show the UI trend in consistent logic.

*** Injury is broadly defined to include any type of injuries regardless of the cause or severity level. The total number of patients injured represents all of the reported injuries including minor injuries treated with first aid alone. However, the patient injury rate considers only the number of patient injuries that required beyond first-aid level treatment based on the NRI definition and the patient injury rate is the number of 'major' patient injuries per every 1000 inpatient days

**** One STAT event may involve more than one STAT order for the same patient. Any orders placed within 20 minute timeframe are considered to belong to one STAT event.

Performance Related Information for Staff & Managers

4. Restraint & Seclusion

Data Source: Restraint/Seclusion Log and UI DB (for # of total events and patients) and Avatar (for patient days/hours)

Updated as of 02/19/14

Category	Feb-13	Mar-13	Apr-13	May-13	Jun-13	Jul-13	Aug-13	Sep-13	Oct-13	Nov-13	Dec-13	Jan-14	Monthly Average	Total (12mths)	NPR* (Jun-13)
Number of Restraint Events	0	0	0	0	0	0	0	0	2	2	0	1	0.4	5	
Number of Unique Patients Restrained	0	0	0	0	0	0	0	0	1	2	0	1	0.3		
Percentage of Patients Restrained	0.0%	0.0%	0.0%	0.0%	0.0%	0.0%	0.0%	0.0%	0.3%	0.7%	0.0%	0.3%	0.1%		5.8%
Total Restraint Hours (h:mm)	0:00	0:00	0:00	0:00	0:00	0:00	0:00	0:00	2:08	6:15	0:00	0:35	0:44	8:58	
Restraint Hours Rate	0.000	0.000	0.000	0.000	0.000	0.000	0.000	0.000	0.011	0.034	0.000	0.003	0.004		0.71
Number of Seclusion Events	5	1	10	12	5	4	5	4	4	11	6	6	6.1	73	
Number of Unique Patients Secluded	2	1	6	6	3	1	3	4	4	6	1	5	3.5		
Percentage of Patients Secluded	0.7%	0.3%	1.9%	1.9%	1.0%	0.3%	1.1%	1.3%	1.3%	2.1%	0.3%	1.6%	1.2%		2.4%
Total Seclusion Hours (h:mm)	7:13	1:00	10:18	7:44	21:45	3:50	8:30	3:10	3:20	17:11	6:20	10:34	8:24	100:55	
Seclusion Hours Rate	0.042	0.005	0.054	0.038	0.119	0.021	0.046	0.017	0.017	0.094	0.034	0.052	0.045		0.44

* National Public Rate, NASMHPD Research Institute, National Research Institute (NRI), Data as of June 2013, Published in November 2013.

Performance Related Information for Staff & Managers

5. Demographic Information of Individuals in Care

Data Source: Avatar

Updated as of 02/19/14

Category	Sub-group	Feb-13	Mar-13	Apr-13	May-13	Jun-13	Jul-13	Aug-13	Sep-13	Oct-13	Nov-13	Dec-13	Jan-14	Monthly Average	Percent*
Total Active (on Roll) at End of Month*		259	267	279	272	251	253	253	273	261	256	266	273	264	
Gender	Female	71	77	80	78	67	73	70	70	68	69	72	79	73	27.6%
	Male	188	190	199	194	184	180	183	203	193	187	194	194	191	72.4%
Age	Median Age (Years)	56 yrs	56 yrs	55 yrs	56 yrs	56 yrs	56 yrs	56 yrs	56 yrs	56 yrs	56 yrs	56 yrs	56 yrs	56 yrs	
	<30 years old	15	15	19	19	18	18	16	28	22	18	21	22	19	7.3%
	>=30 and <40 years old	26	31	31	31	23	27	24	26	25	26	30	30	28	10.4%
	>=40 and <50 years old	42	45	48	44	40	39	40	40	40	45	43	44	43	16.1%
	>=50 and <60 years old	90	89	89	84	79	74	79	84	82	75	78	77	82	31.0%
	>=60 years old	86	87	92	94	91	95	94	95	92	92	94	100	93	35.2%
Legal Status of Individuals on Roll at End of Month	Emergency	19	22	29	31	27	19	18	27	18	19	26	34	24	9.1%
	Inpatient Commitment	21	23	21	21	21	23	20	22	24	23	23	26	22	8.5%
	Outpatient Commitment	26	23	24	18	18	19	24	21	25	23	22	22	22	8.4%
	Voluntary	46	44	45	45	44	50	46	42	42	41	41	41	44	16.7%
	Civil Sub-total	112	112	119	115	110	111	108	112	109	106	112	123	112	42.6%
	DC Exam	38	48	54	50	38	38	41	55	48	49	54	54	47	17.9%
	Mentally Incompetent	5	4	1	1	1	1	2	2	2	1	1	1	2	0.7%
	Forensic Pre-trial Sub-total	43	52	55	51	39	39	43	57	50	50	55	55	49	18.6%
	NGBRI - DC	92	89	90	91	87	89	88	89	86	83	82	77	87	33.0%
	NGBRI - US	8	10	10	10	10	9	9	10	11	12	12	13	10	3.9%
NGBRI - VI	1	1	1	1	1	1	1	1	1	1	1	1	1	0.4%	
Dual Commitment	1	1	2	2	2	2	2	2	2	2	2	2	2	0.7%	
Sexual Psychopath (Miller Act)	2	2	2	2	2	2	2	2	2	2	2	2	2	0.8%	
Forensic Post-trial Sub-total	104	103	105	106	102	103	102	104	102	100	99	95	102	38.7%	
Length of Stay	Median LOS (Days)	1097 d	1068 d	830 d	1033 d	1179 d	1190 d	1157 d	857 d	1003 d	938 d	646 d	568 d	964 d	
	Average LOS (Days)	3181 d	3093 d	2973 d	3065 d	3294 d	3217 d	3207 d	2963 d	3108 d	3097 d	2956 d	2885 d	3087 d	
	<30 Days	29	33	41	30	23	32	33	42	25	25	30	35	32	12.0%
	>=30 ~ <365 Days	69	74	80	82	70	62	65	78	83	80	85	89	76	29.0%
	>= 1 Year & < 2 Years	18	15	13	14	15	14	14	13	14	18	19	19	16	5.9%
	>= 2 Years & < 5 Years	39	42	42	43	42	44	39	39	37	33	34	32	39	14.7%
	>= 5 Years & < 20 Years	60	59	59	59	57	57	56	56	57	56	53	53	57	21.6%
>= 20 Years	44	44	44	44	44	44	46	45	45	44	45	45	45	16.9%	

* Counts the total number of individuals who are on the hospital roll at end of each month. This number serves as denominator to calculate percentage of each group.