

**Government of the District of Columbia
Department of Mental Health (DMH)**

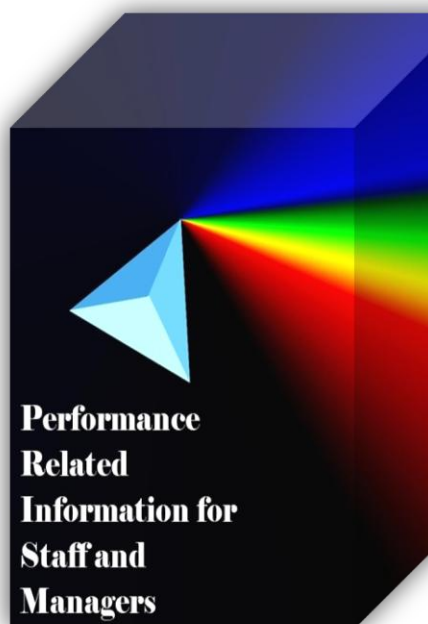


Performance Related Information for Staff and Managers

PRISM

OCTOBER 2012

Table of Contents

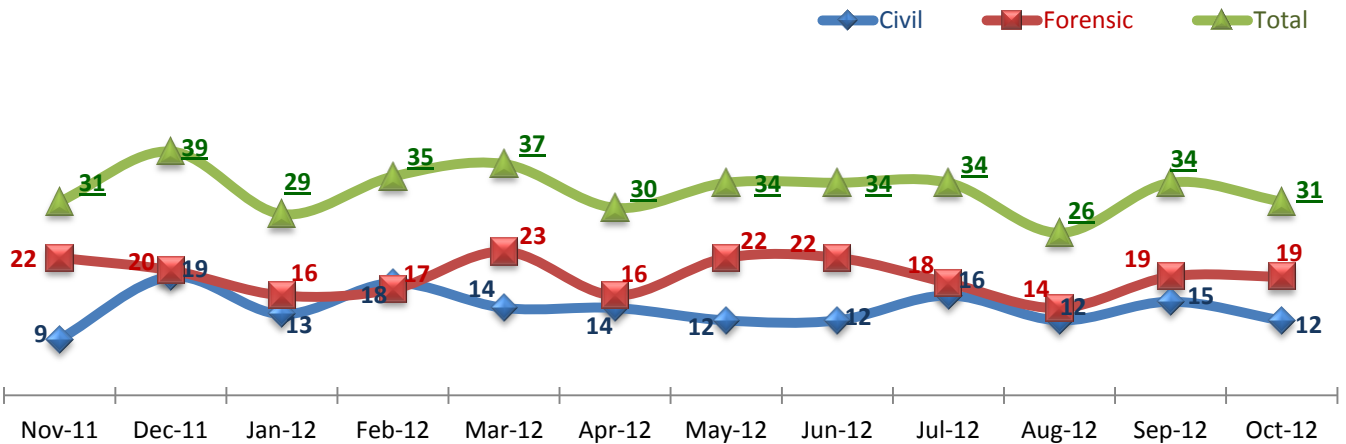


1.	Admissions to SEH	1
2.	Discharges from SEH.....	1
3.	Average Daily Census	1
4.	Transfers	2
5.	30-Day Readmission Rate	2
6.	Unusual Incidents.....	2
7.	Unusual Incidents by Severity	3
8.	Patient-Involved Unusual Incidents.....	3
9.	Selected Types of Incidents	4
10.	Physical Assaults by Severity	4
11.	Patient Injuries.....	5
12.	Staff Injuries.....	5
13.	Eloperments	5
14.	Reported Medication Variances	6
15.	Reported Adverse Drug Reactions	6
16.	Percent of Missing Documentation on Med-Administration.....	6
17.	Percent of Patients Restrained or Secluded.....	7
18.	Restraint Hours Rate & Seclusion Hours Rate	7
	<input type="checkbox"/> Appendix 1) Table – Census, Admissions & Discharges	
	<input type="checkbox"/> Appendix 2) Table – Key Performance Indicators	
	<input type="checkbox"/> Appendix 3) Table – Unusual Incident & Medication	
	<input type="checkbox"/> Appendix 4) Table – Restraint & Seclusion	
	<input type="checkbox"/> Appendix 5) Table – Major Incidents by Incident Location/Unit	
	<input type="checkbox"/> Appendix 6) Table – Demographic Information of Individuals in Care	

11/14/2012

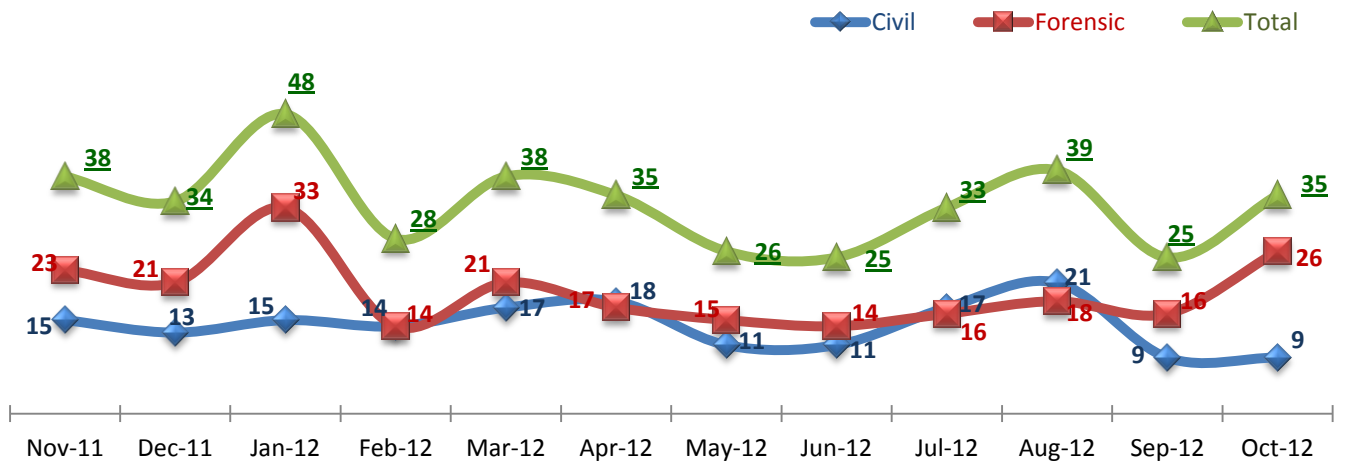
Office of Statistics and Reporting (OSR)

1. Admissions to SEH



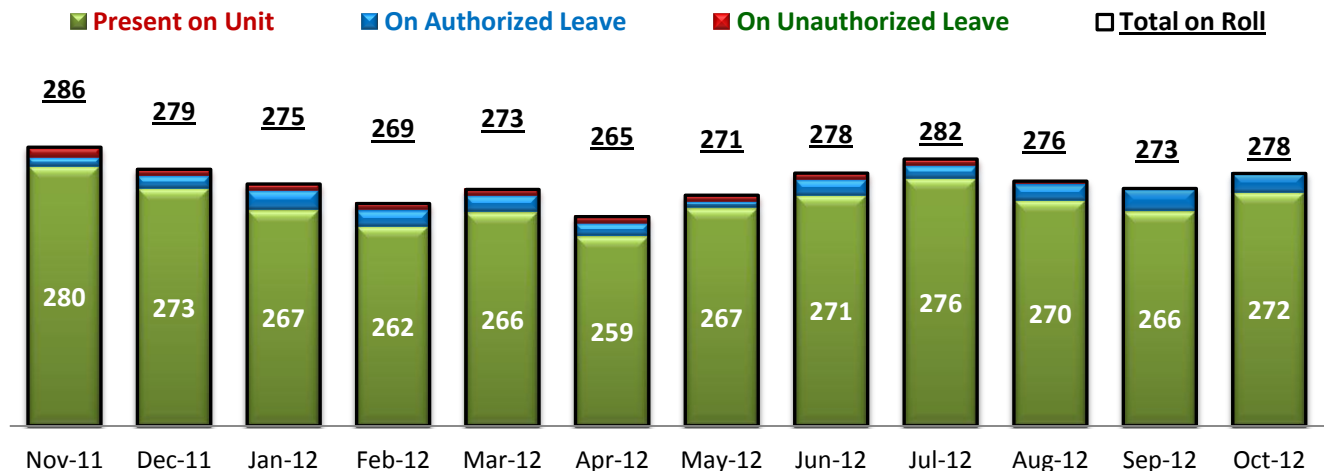
* Number of admissions to SEH inpatient program, including transfers from outpatient to inpatient program.

2. Discharges from SEH



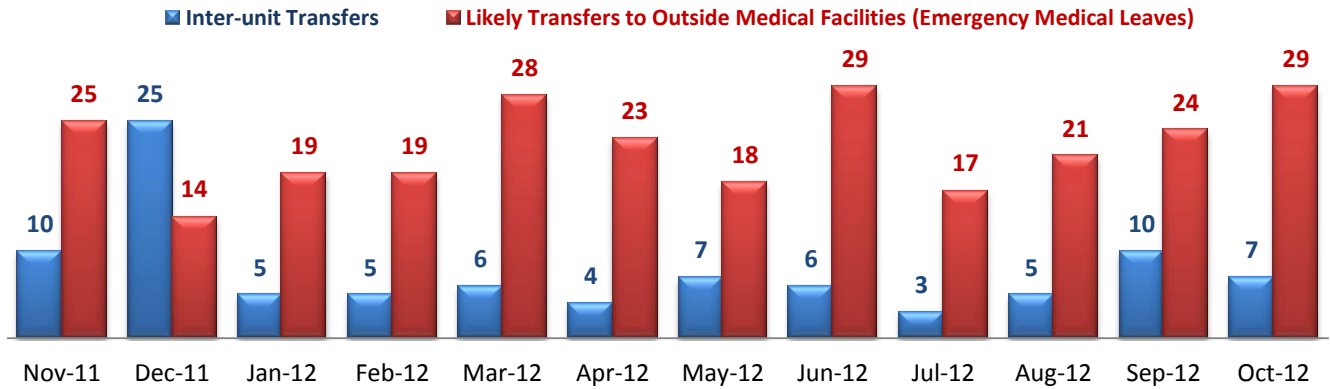
* Number of discharges from SEH inpatient program, including transfers from inpatient to outpatient program.

3. Average Daily Census



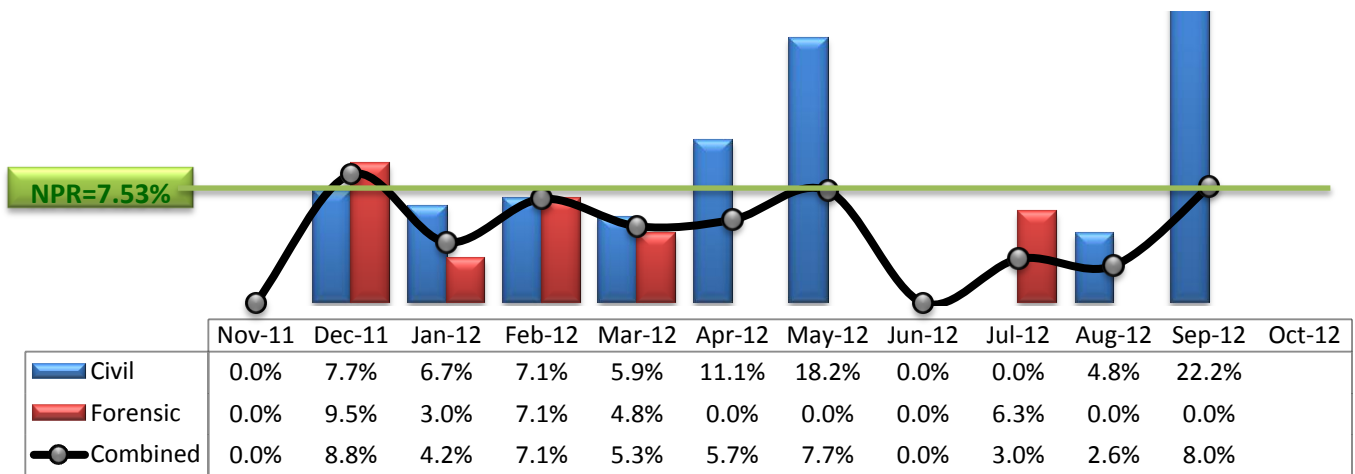
* Data above is the daily average number of individuals counted at 11:59 PM every day during each month.

4. Transfers



* Number of inter-unit transfers that occurred during month and number of emergency medical leaves that were initiated during month.

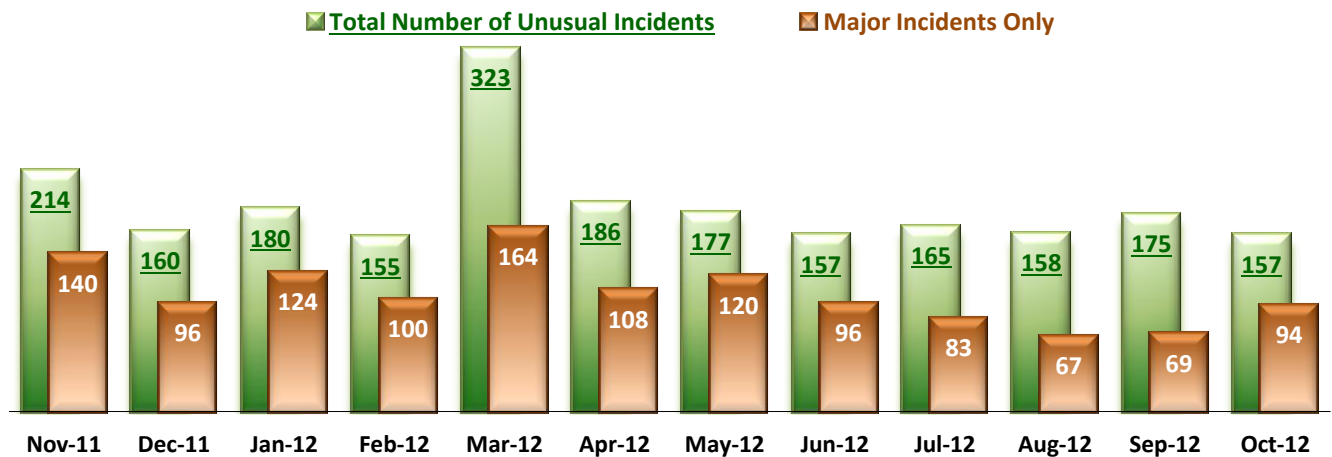
5. 30-Day Readmission Rate



* Percent of discharges that returned to SEH within 30 days of discharges. It does not include those who may have been re-hospitalized at another psychiatric facility. This measure requires 30-day observation following discharge.

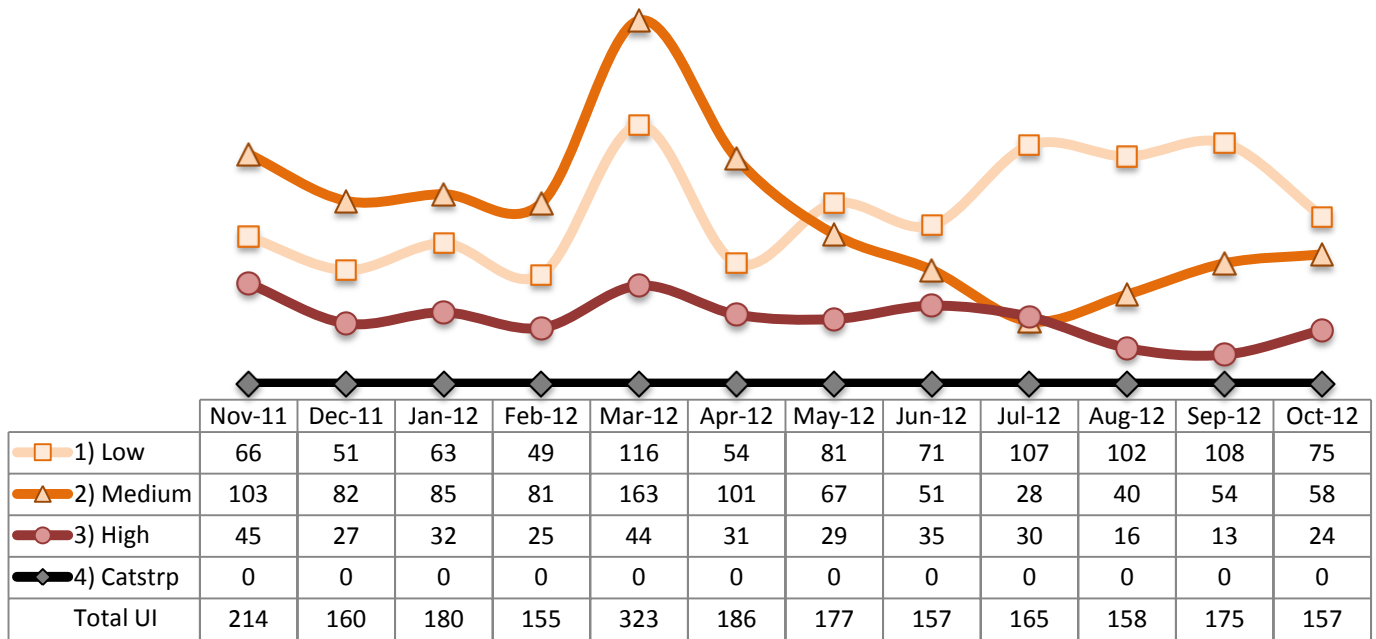
** NPR: National Public Rate as of September 2011 published by NASMHPD Research Institute in January 2012.

6. Unusual Incidents

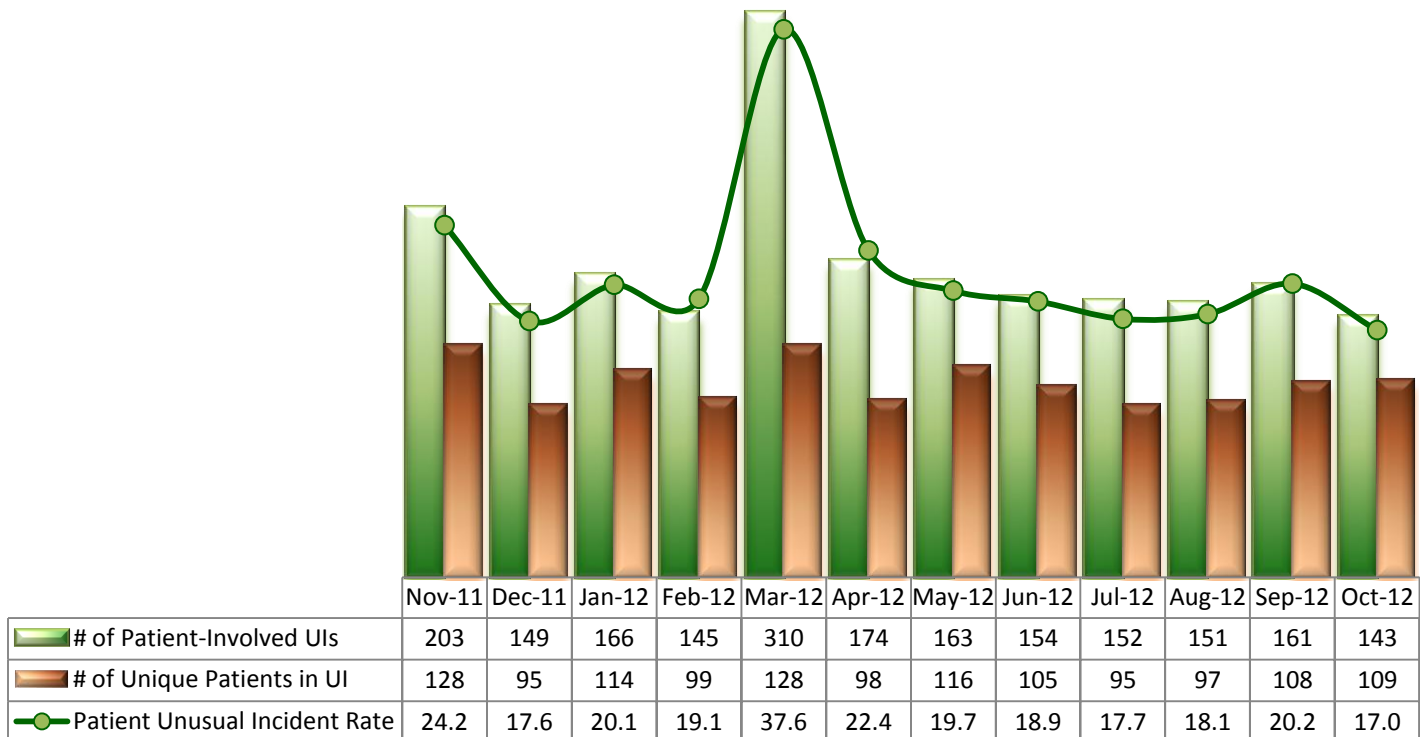


* Numbers above represent all types of the unusual incidents (UIs) that were reported to the Risk Manager by PRISM publication date, including those that did not involve any patients.

7. Unusual Incidents by Severity

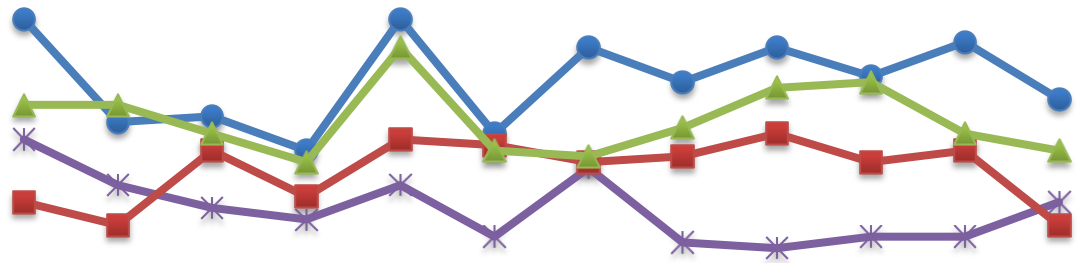


8. Patient-Involved Unusual Incidents



*The total number of patient-involved UIs counts only those incidents that involved at least one or more patients. Some patients may be involved in more than one incident and the number of unique patients does not double count them. The patient UI rate is the number of patient-involved unusual incidents reported for every 1000 inpatient days.

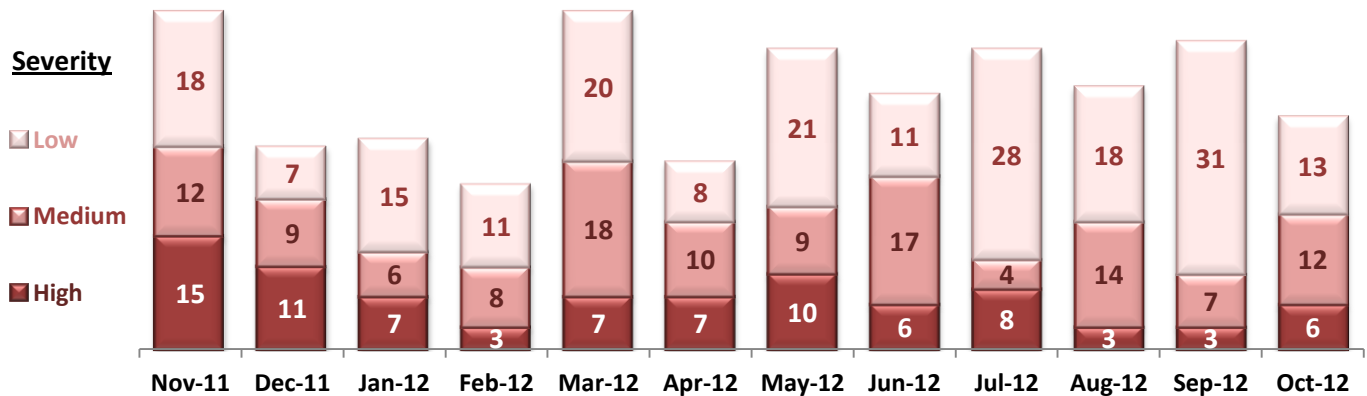
9. Selected Types of Incidents



	Nov-11	Dec-11	Jan-12	Feb-12	Mar-12	Apr-12	May-12	Jun-12	Jul-12	Aug-12	Sep-12	Oct-12
Physical Assault	45	27	28	22	45	25	40	34	40	35	41	31
Psych Emergency	24	16	12	10	16	7	19	6	5	7	7	13
Fall	13	9	22	14	24	23	20	21	25	20	22	9
Injury	30	30	25	20	40	22	21	26	33	34	25	22

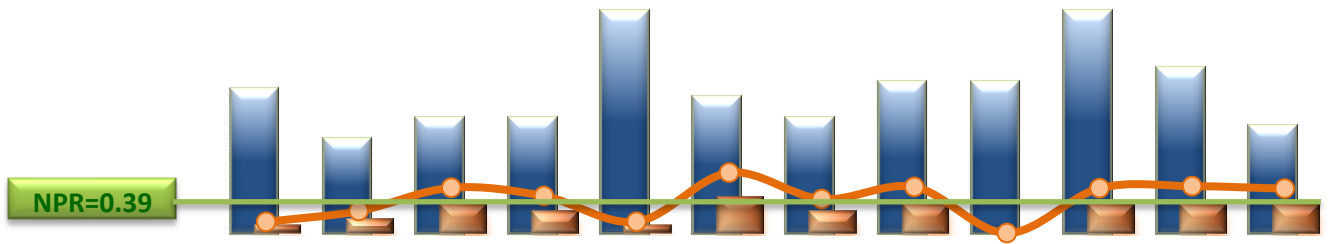
* These are incident types that are frequently reported. Some incidents may be counted in multiple categories. For example, a physical assault incident that accompanied psychiatric emergency and injury is counted under psychiatric emergency and injury as well as under physical assault. Injury is broadly defined to include any type of injuries regardless of the cause or severity level.

10. Physical Assaults by Severity



*Any physical assault that accompanies a code 13 or results in extensive injury needing off-unit treatment or transfer to ER is considered to be high severity, any physical assault that causes a minor injury that can be treated on unit is considered to be medium severity, and physical assault events that result in no injury are considered to be low severity.

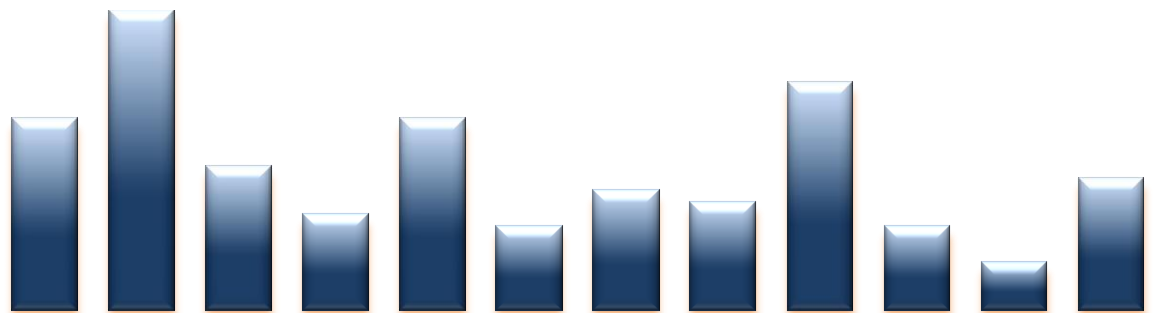
11. Patient Injuries



	Nov-11	Dec-11	Jan-12	Feb-12	Mar-12	Apr-12	May-12	Jun-12	Jul-12	Aug-12	Sep-12	Oct-12
Total Pts Injured	20	13	16	16	31	19	16	21	21	31	23	15
Major Pt Injuries*	1	2	4	3	1	5	3	4	0	4	4	4
Patient Injury Rate	0.12	0.24	0.48	0.40	0.12	0.64	0.36	0.49	0.00	0.48	0.50	0.47

* Injury is broadly defined to include any type of injuries regardless of the cause or severity level. The total number of patients injured represents all of the reported injuries including minor injuries treated with first aid alone. However, the patient injury rate considers only the number of patient injuries that required beyond first-aid level treatment based on the NRI definition and the patient injury rate is the number of 'major' patient injuries per every 1000 inpatient days

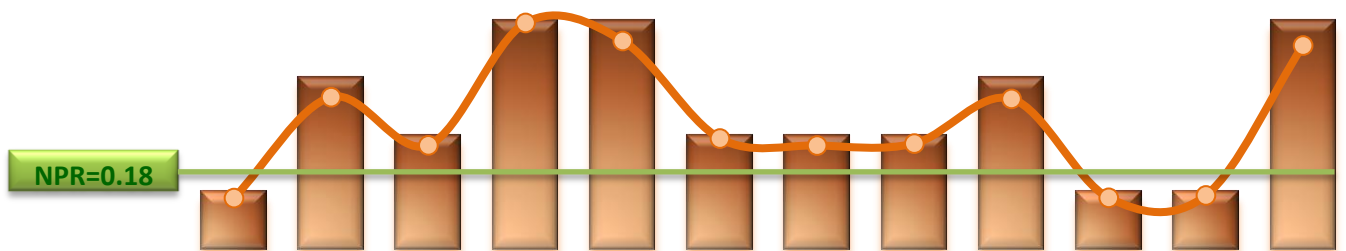
12. Staff Injuries



	Nov-11	Dec-11	Jan-12	Feb-12	Mar-12	Apr-12	May-12	Jun-12	Jul-12	Aug-12	Sep-12	Oct-12
# of Staff Injured	16	25	12	8	16	7	10	9	19	7	4	11

* Injury is broadly defined to include any type of injuries regardless of the cause or severity level. The total number of staff injured represents all of the reported staff injuries including minor injuries treated with first aid alone.

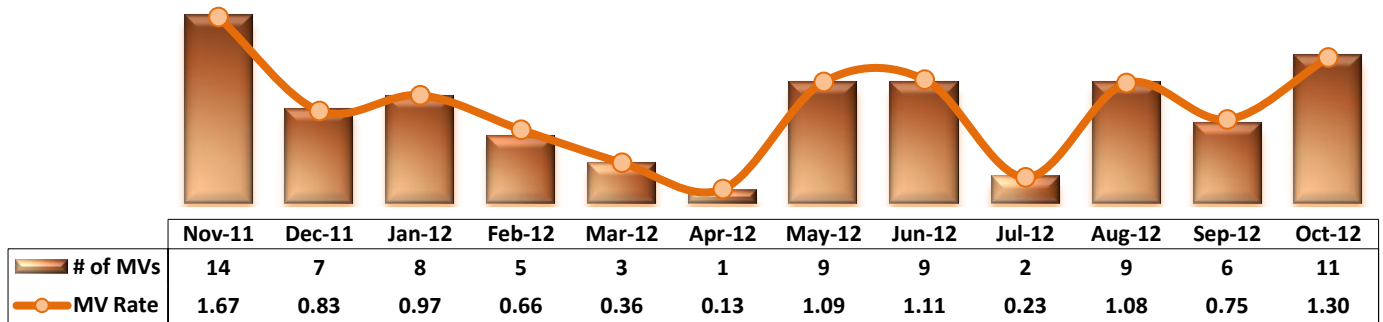
13. Elopements



	Nov-11	Dec-11	Jan-12	Feb-12	Mar-12	Apr-12	May-12	Jun-12	Jul-12	Aug-12	Sep-12	Oct-12
# of Elopements	1	3	2	4	4	2	2	2	3	1	1	4
Elopement Rate	0.12	0.35	0.24	0.53	0.49	0.26	0.24	0.25	0.35	0.12	0.13	0.47

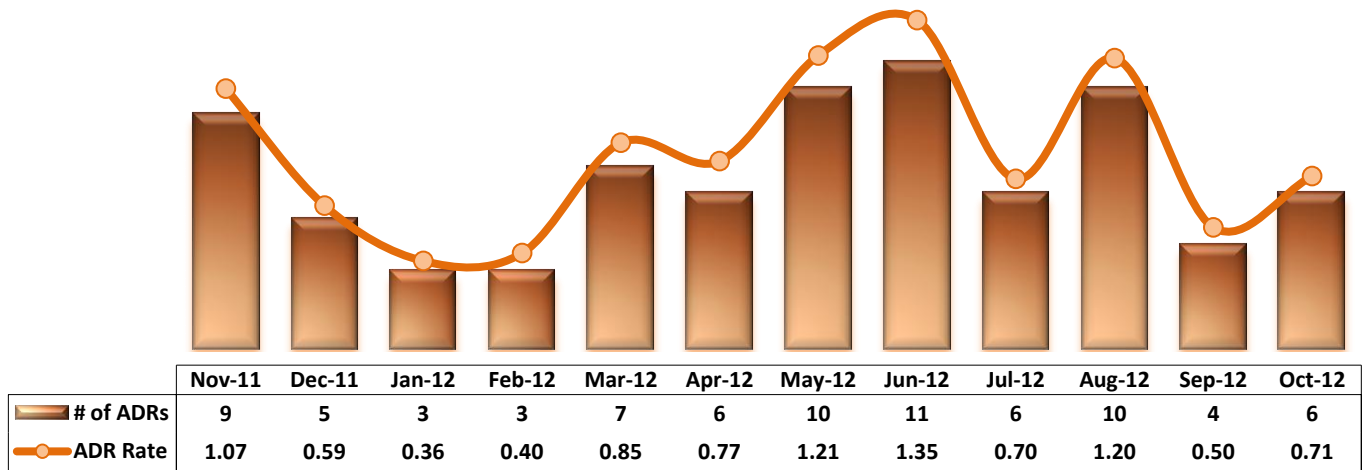
* It counts the total number of unauthorized leaves for any duration that were initiated during month and were recorded in Avatar. The elopement rate is the number of those unauthorized leaves that occurred for every 1000 inpatient days.

14. Reported Medication Variances



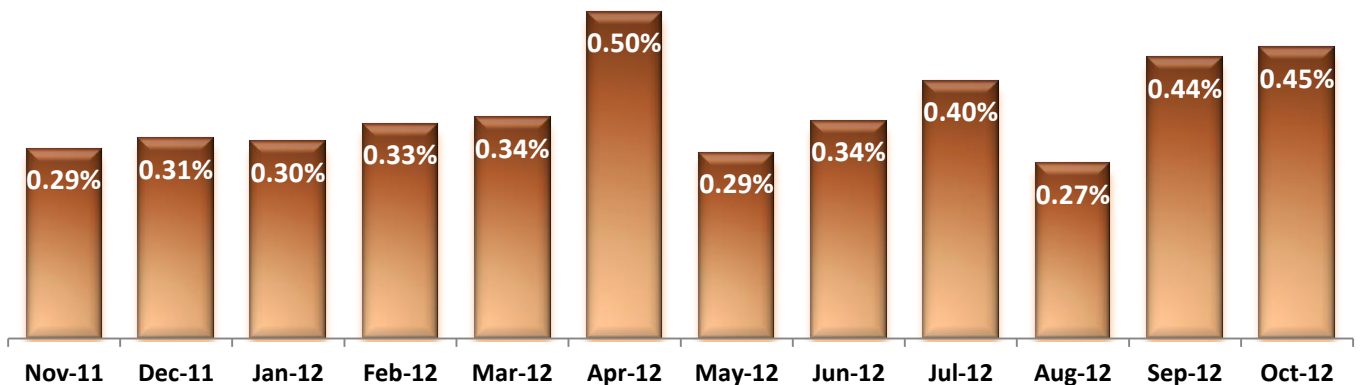
* MV Rate: Number of reported medication variance events that occurred for every 1000 inpatient days.

15. Reported Adverse Drug Reactions



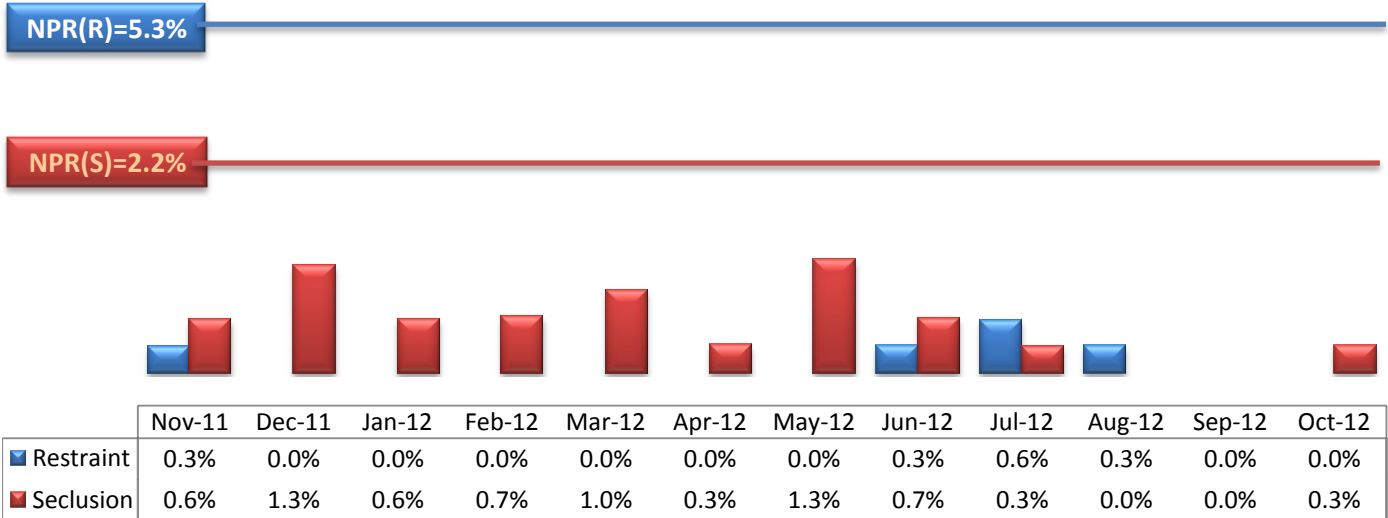
* ADR Rate: Number of reported adverse drug reaction events that occurred for every 1000 inpatient days.

16. Percent of Missing Documentation on Med-Administration



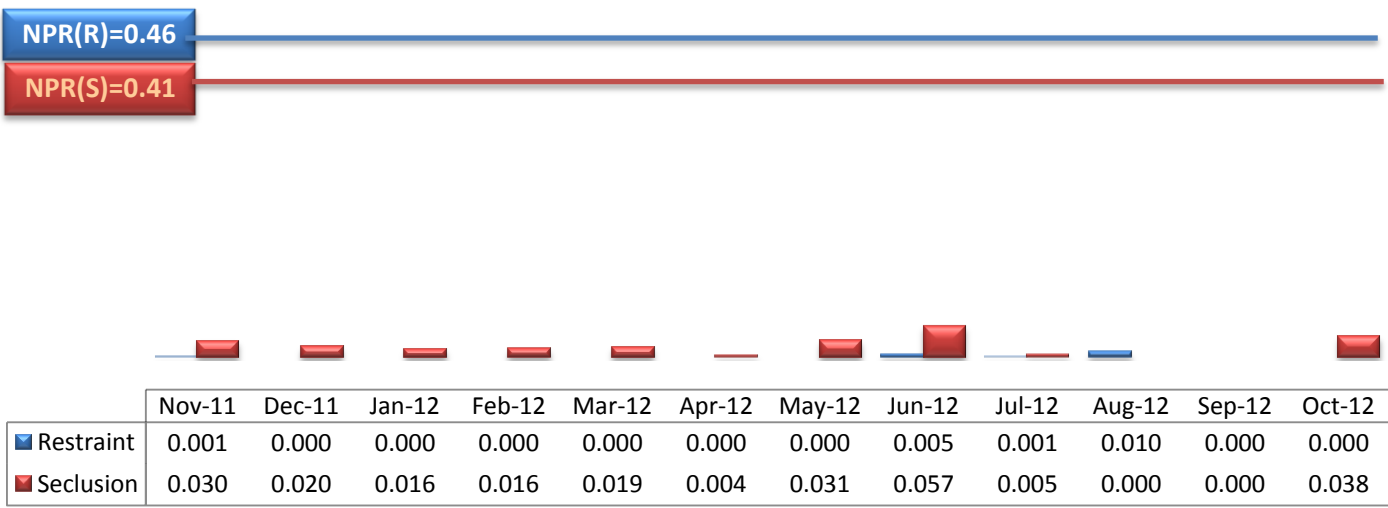
* June-2011 data is not available because of data tracking interruption caused by a technical glitch in Avatar. September-2011 data does not include administration records associated with new orders placed between 9/22/11 and 9/25/11 due to a technical issue that occurred in Avatar and Worx during that time period.

17. Percent of Patients Restrained or Secluded



* Percent of unique patients who were restrained at least once and percent of unique patients who were secluded at least once. The denominator includes all individuals who were served in care >=1 day during month.

18. Restraint Hours Rate & Seclusion Hours Rate



* Restraint/Seclusion Hours Rate: Number of hours spent in restraint/seclusion for every 1000 inpatient hours.

Performance Related Information for Staff & Managers

1. Census, Admissions, Discharges & Transfers

Data Source: Avatar

Updated as of 11/14/12

Category	Nov-11	Dec-11	Jan-12	Feb-12	Mar-12	Apr-12	May-12	Jun-12	Jul-12	Aug-12	Sep-12	Oct-12	Monthly Average	Total (12mths)	Figure	
Admissions	Civil	9	19	13	18	14	14	12	12	16	12	15	12	14	166	Figure 1
	Forensic	22	20	16	17	23	16	22	22	18	14	19	19	19	228	
	Total	31	39	29	35	37	30	34	34	34	26	34	31	33	394	
Discharges	Civil	15	13	15	14	17	18	11	11	17	21	9	9	14	170	Figure 2
	Forensic	23	21	33	14	21	17	15	14	16	18	16	26	20	234	
	Total	38	34	48	28	38	35	26	25	33	39	25	35	34	404	
Net Gain During Month	Civil	-6	6	-2	4	-3	-4	1	1	-1	-9	6	3		-4	
	Forensic	-1	-1	-17	3	2	-1	7	8	2	-4	3	-7		-6	
	Total	-7	5	-19	7	-1	-5	8	9	1	-13	9	-4		-10	
All Individuals on Roll at End of Month	278	283	264	271	270	265	273	282	283	270	279	275	274			
a. Present on Unit	272	275	259	266	262	260	267	275	277	259	275	270	268			
b. On AL	3	6	3	3	6	3	5	5	4	10	4	5	5			
c. On UL	3	2	2	2	2	2	1	2	2	1	0	0	2			
All Individuals on Roll: Daily Average during Month	286	279	275	269	273	265	271	278	282	276	273	278	275			
a. Present on Unit*	280	273	267	262	266	259	267	271	276	270	266	272	269		Figure 3	
b. On AL	3	4	6	5	5	4	2	5	4	5	7	6	5			
c. On UL	3	2	2	2	2	2	2	2	2	1	0	0	2			
Patient Days*	8402	8471	8268	7588	8246	7759	8284	8132	8568	8358	7988	8430	8208	98494		
Inter-Unit Transfers during Month	10	25	5	5	6	4	7	6	3	5	10	7	8	93	Figure 4	
Medical Leaves Initiated during Month	Emergency	25	14	19	19	28	23	18	29	17	21	24	29	22		266
	Non-Emer	12	13	10	17	29	29	34	46	43	16	33	16	25		298
	Total	37	27	29	36	57	52	52	75	60	37	57	45	47	564	
Non-Medical Leaves Initiated during Month	66	82	91	74	99	105	145	142	126	95	103	95	102	1223		
UL Initiated during Month	1	3	2	4	4	2	2	2	3	1	1	4	2	29		
Total Unique Patients Served during Month	315	314	311	298	306	300	298	306	316	309	302	310	307			
30 Day Readmission **	Civil	0	1	1	1	1	2	2	0	0	1	2		1	11	
	Forensic	0	2	1	1	1	0	0	0	1	0	0		1	6	
	Total	0	3	2	2	2	2	2	0	1	1	2		2	17	

* Counts the number of patients who are present on the unit and excludes those on authorized or unauthorized leave at 11:59pm on a given day.

** Number of patients returning within 30 days of discharges that occurred during month.

Performance Related Information for Staff & Managers

2. Key Performance Indicators

Data Source: UI DB, ADR DB, Restraint/Seclusion Log, and Avatar

Updated as of 11/14/12

Category	Nov-11	Dec-11	Jan-12	Feb-12	Mar-12	Apr-12	May-12	Jun-12	Jul-12	Aug-12	Sep-12	Oct-12	Monthly Average	NPR* (Sep-11)	Figure	
30 Day Readmit (Discharge Cohort)**	Civil	0.0%	7.7%	6.7%	7.1%	5.9%	11.1%	18.2%	0.0%	0.0%	4.8%	22.2%	7.1%		Figure 5	
	Forensic	0.0%	9.5%	3.0%	7.1%	4.8%	0.0%	0.0%	0.0%	6.3%	0.0%	0.0%	2.8%			
	Combined	0.0%	8.8%	4.2%	7.1%	5.3%	5.7%	7.7%	0.0%	3.0%	2.6%	8.0%	4.6%	7.5%		
Number of Unusual Incidents	214	160	180	155	323	186	177	157	165	158	175	157	184		Figure 6	
UI by Severity	Catastrophe	0	0	0	0	0	0	0	0	0	0	0			Figure 7	
	High	45	27	32	25	44	31	29	35	30	16	13	29			
	Medium	103	82	85	81	163	101	67	51	28	40	54	76			
	Low	66	51	63	49	116	54	81	71	107	102	108	79			
Patient Unusual Incident Rate	24.2	17.6	20.1	19.1	37.6	22.4	19.7	18.9	17.7	18.1	20.2	17.0	21.0		Figure 8	
Selected Types of Incidents	Physical Assault	45	27	28	22	45	25	40	34	40	35	41	34		Figure 9	
	Psych Emergency	24	16	12	10	16	7	19	6	5	7	7	12			
	Fall	13	9	22	14	24	23	20	21	25	20	22	9	19		
	Injury	30	30	25	20	40	22	21	26	33	34	25	22	27		
Physical Assaults by Severity	High	15	11	7	3	7	7	10	6	8	3	3	7		Figure 10	
	Medium	12	9	6	8	18	10	9	17	4	14	7	11			
	Low	18	7	15	11	20	8	21	11	28	18	31	17			
Patient Injury Rate***	0.12	0.24	0.48	0.40	0.12	0.64	0.36	0.49	0.00	0.48	0.50	0.47	0.36	0.39		
Patients with Major Injuries***	1	2	4	3	1	5	3	4	0	4	4	4	3		Figure 11	
Total Patients Injured***	20	13	16	16	31	19	16	21	21	31	23	15	20			
Total Staff Injured***	16	25	12	8	16	7	10	9	19	7	4	11	12		Figure 12	
Elopement Rate	0.12	0.35	0.24	0.53	0.49	0.26	0.24	0.25	0.35	0.12	0.13	0.47	0.39	0.18	Figure 13	
Medication Variance Rate	1.67	0.83	0.97	0.66	0.36	0.13	1.09	1.11	0.23	1.08	0.75	1.30	0.85		Figure 14	
Adverse Drug Reaction Rate	1.07	0.59	0.36	0.40	0.85	0.77	1.21	1.35	0.70	1.20	0.50	0.71	0.81		Figure 15	
Missing Med-Admin Documentation	0.29%	0.31%	0.30%	0.33%	0.34%	0.50%	0.29%	0.34%	0.40%	0.27%	0.44%	0.45%	0.36%		Figure 16	
Percent of Patients Restrained	0.3%	0.0%	0.0%	0.0%	0.0%	0.0%	0.0%	0.3%	0.6%	0.3%	0.0%	0.0%	0.1%	5.3%	Figure 17	
Percent of Patients Secluded	0.6%	1.3%	0.6%	0.7%	1.0%	0.3%	1.3%	0.7%	0.3%	0.0%	0.0%	0.3%	0.6%	2.2%		
Restraint Hours Rate	0.001	0.000	0.000	0.000	0.000	0.000	0.000	0.005	0.001	0.010	0.000	0.000	0.001	0.46	Figure 18	
Seclusion Hours Rate	0.030	0.020	0.016	0.016	0.019	0.004	0.031	0.057	0.005	0.000	0.000	0.038	0.020	0.41		

* National Public Rate, NASMHPD Research Institute, National Research Institute (NRI), 2012

** Percentage of patients returning within 30 days of discharges that occurred during month

*** Refer to the next page [UI & Medication]

**** As of September 2012, we are temporarily removing the emergency involuntary medication administration data from PRISM because we discovered a technical glitch in Avatar that made this data inaccurate. A fix is under way and this indicator will be reported again as reliable data becomes available.

Performance Related Information for Staff & Managers

3. Unusual Incident & Medication

Data Source: UI DB, ADR DB, and Avatar

Updated as of 11/14/12

Category	Nov-11	Dec-11	Jan-12	Feb-12	Mar-12	Apr-12	May-12	Jun-12	Jul-12	Aug-12	Sep-12	Oct-12	Monthly Average	Total (12mths)	NPR* (Sep-11)
Total Unusual Incidents**	214	160	180	155	323	186	177	157	165	158	175	157	184	2207	
Total Major Unusual Incidents	140	96	124	100	164	108	120	96	83	67	69	94	105	1261	
Patient Involved UI Only**	203	149	166	145	310	174	163	154	152	151	161	143	173	2071	
<i>Patient UI Rate</i>	<i>24.2</i>	<i>17.6</i>	<i>20.1</i>	<i>19.1</i>	<i>37.6</i>	<i>22.4</i>	<i>19.7</i>	<i>18.9</i>	<i>17.7</i>	<i>18.1</i>	<i>20.2</i>	<i>17.0</i>	<i>21.0</i>		
Unique Patients Involved in UI**	128	95	114	99	128	98	116	105	95	97	108	109	108	1292	
Selected Types of Incidents															
Physical Assault	45	27	28	22	45	25	40	34	40	35	41	31	34	413	
Psych Emergency	24	16	12	10	16	7	19	6	5	7	7	13	12	142	
Fall	13	9	22	14	24	23	20	21	25	20	22	9	19	222	
Injury	30	30	25	20	40	22	21	26	33	34	25	22	27	328	
UI by Severity															
Catastrophe	0	0	0	0	0	0	0	0	0	0	0	0	0	0	
High	45	27	32	25	44	31	29	35	30	16	13	24	29	351	
Medium	103	82	85	81	163	101	67	51	28	40	54	58	76	913	
Low	66	51	63	49	116	54	81	71	107	102	108	75	79	943	
Physical Assaults by Severity															
High	15	11	7	3	7	7	10	6	8	3	3	6	7	86	
Medium	12	9	6	8	18	10	9	17	4	14	7	12	11	126	
Low	18	7	15	11	20	8	21	11	28	18	31	13	17	201	
Total Patients Injured***	20	13	16	16	31	19	16	21	21	31	23	15	20	242	
Patients with Major Injuries***	1	2	4	3	1	5	3	4	0	4	4	4	3	35	
<i>Patient Injury Rate***</i>	<i>0.12</i>	<i>0.24</i>	<i>0.48</i>	<i>0.40</i>	<i>0.12</i>	<i>0.64</i>	<i>0.36</i>	<i>0.49</i>	<i>0.00</i>	<i>0.48</i>	<i>0.50</i>	<i>0.47</i>	<i>0.36</i>		<i>0.39</i>
Total Staff Injured**	16	25	12	8	16	7	10	9	19	7	4	11	12		
Total UL Incident Reports	1	3	2	5	5	2	3	4	3	4	3	3	3	38	
Total ULs Documented in Avatar	1	3	2	4	4	2	2	2	3	1	1	4	2		
<i>Elopement Rate</i>	<i>0.12</i>	<i>0.35</i>	<i>0.24</i>	<i>0.53</i>	<i>0.49</i>	<i>0.26</i>	<i>0.24</i>	<i>0.25</i>	<i>0.35</i>	<i>0.12</i>	<i>0.13</i>	<i>0.47</i>	<i>0.39</i>		<i>0.18</i>
Med Variance (MV) Reports**	14	7	8	5	3	1	9	9	2	9	6	11	7	84	
<i>MV Rate</i>	<i>1.67</i>	<i>0.83</i>	<i>0.97</i>	<i>0.66</i>	<i>0.36</i>	<i>0.13</i>	<i>1.09</i>	<i>1.11</i>	<i>0.23</i>	<i>1.08</i>	<i>0.75</i>	<i>1.30</i>	<i>0.85</i>		
Adverse Drug Reactions Reports	9	5	3	3	7	6	10	11	6	10	4	6	7	80	
<i>ADR Rate</i>	<i>1.07</i>	<i>0.59</i>	<i>0.36</i>	<i>0.40</i>	<i>0.85</i>	<i>0.77</i>	<i>1.21</i>	<i>1.35</i>	<i>0.70</i>	<i>1.20</i>	<i>0.50</i>	<i>0.71</i>	<i>0.81</i>		
Total Med Administrations Scheduled	101392	101756	99731	93833	105273	101205	108557	105239	108563	107540	104812	112293		1250194	
Total Missing Documentations	297	315	304	311	360	511	311	354	433	290	456	505		4447	
<i>Percent of Missing Documentation</i>	<i>0.29%</i>	<i>0.31%</i>	<i>0.30%</i>	<i>0.33%</i>	<i>0.34%</i>	<i>0.50%</i>	<i>0.29%</i>	<i>0.34%</i>	<i>0.40%</i>	<i>0.27%</i>	<i>0.44%</i>	<i>0.45%</i>		<i>0.36%</i>	
Total STAT Orders	74	30	40	53	51	38	81	51	82	38	54	64	55		
Total STAT Events****										22	28	35	28		
Total Individuals Involved >=1 STAT										14	24	16	18		
Total Patients with >=3 STAT Events										3	0	3	2		

* National Public Rate, NASMHPD Research Institute, National Research Institute (NRI), 2012

** Numbers may change if any additional UI report is made after the data run date from UI database (around the 15th of the following month).

*** Injury is broadly defined to include any type of injuries regardless of the cause or severity level. The total number of patients injured represents all of the reported injuries including minor injuries treated with first aid alone. However, the patient injury rate considers only the number of patient injuries that required beyond first-aid level treatment based on the NRI definition and the patient injury rate is the number of 'major' patient injuries per every 1000 inpatient days

**** One STAT event may involve more than one STAT order for the same patient. Any orders placed within 15 minute timeframe are considered to belong to one STAT event.

Performance Related Information for Staff & Managers

4. Restraint & Seclusion

Data Source: Restraint/Seclusion Log and UI DB (for # of total events and patients) and Avatar (for patient days/hours)

Updated as of 11/14/12

Category	Nov-11	Dec-11	Jan-12	Feb-12	Mar-12	Apr-12	May-12	Jun-12	Jul-12	Aug-12	Sep-12	Oct-12	Monthly Average	Total (12mths)	NPR* (Sep-11)
Number of Restraint Events	1	0	0	0	0	0	0	1	2	1	0	0	0.4	5	
Number of Unique Patients Restrained	1	0	0	0	0	0	0	1	2	1	0	0	0.4		
Percentage of Patients Restrained	0.3%	0.0%	0.0%	0.0%	0.0%	0.0%	0.0%	0.3%	0.6%	0.3%	0.0%	0.0%	0.1%		5.3%
Total Restraint Hours (h:mm)	0:15	0:00	0:00	0:00	0:00	0:00	0:00	1:00	0:13	2:00	0:00	0:00	0:17	3:28	
Restraint Hours Rate	0.001	0.000	0.000	0.000	0.000	0.000	0.000	0.005	0.001	0.010	0.000	0.000	0.001		0.46
Number of Seclusion Events	5	5	2	2	3	1	6	3	1	0	0	5	2.8	33	
Number of Unique Patients Secluded	2	4	2	2	3	1	4	2	1	0	0	1	1.8		
Percentage of Patients Secluded	0.6%	1.3%	0.6%	0.7%	1.0%	0.3%	1.3%	0.7%	0.3%	0.0%	0.0%	0.3%	0.6%		2.2%
Total Seclusion Hours (h:mm)	6:04	4:10	3:13	3:00	3:50	0:45	6:08	11:10	1:00	0:00	0:00	7:40	3:55	47:00	
Seclusion Hours Rate	0.030	0.020	0.016	0.016	0.019	0.004	0.031	0.057	0.005	0.000	0.000	0.038	0.020		0.41

* National Public Rate, NASMHPD Research Institute, National Research Institute (NRI), 2012

Performance Related Information for Staff & Managers

5. Major Incidents by Incident Location/Unit

Data Source: UI DB

Updated as of 11/14/12

Category		Nov-11	Dec-11	Jan-12	Feb-12	Mar-12	Apr-12	May-12	Jun-12	Jul-12	Aug-12	Sep-12	Oct-12	Monthly Average	Total (12mths)	Percent	
Total Unusual Incidents		214	160	180	155	323	186	177	157	165	158	175	157	184	2207		
Total Major Incidents*		140	96	124	100	164	108	120	96	83	67	69	94	105	1261	100%	
Major Incident Location	1A	12	11	13	11	17	10	17	12	4	8	2	12	11	129	10%	
	1B	14	8	14	12	17	9	7	9	5	6	6	8	10	115	9%	
	1C	1	6	8	3	15	11	12	5	8	4	5	7	7	85	7%	
	1D	20	11	9	6	5	6	11	8	9	2	5	2	8	94	7%	
	1E	10	8	8	7	14	15	11	17	10	9	7	15	11	131	10%	
	1F	17	10	5	10	11	7	14	11	16	4	2	7	10	114	9%	
	1G	17	7	11	8	10	21	7	8	8	8	19	11	11	135	11%	
	2A	4	3	3	4	7	3	2	0	3	1	4	2	3	36	3%	
	2B	2	1	3	2	2	2	1	1	1	1	3	0	1	2	19	2%
	2C	13	7	8	6	16	4	12	5	2	2	3	9	7	87	7%	
	2D	11	6	12	8	18	5	7	10	9	8	3	6	9	103	8%	
	TLC	13	9	12	14	21	6	11	4	6	8	4	6	10	114	9%	
	Other	6	9	18	9	11	9	8	6	6	2	4	9	8	99	8%	
Total Physical Assault Incidents		45	27	28	22	45	25	40	34	40	35	41	31	34	413	100%	
Assault Incident Location	1A	2	4	1	0	1	0	7	4	2	4	4	5	3	34	8%	
	1B	0	1	1	0	4	0	1	0	3	3	4	0	1	17	4%	
	1C	0	1	4	0	3	3	0	1	2	1	1	2	2	18	4%	
	1D	11	6	4	4	2	2	4	3	4	2	4	1	4	47	11%	
	1E	4	3	0	5	7	5	5	7	8	5	3	4	5	56	14%	
	1F	7	2	0	1	1	2	10	4	10	2	2	5	4	46	11%	
	1G	10	5	4	4	3	4	2	4	4	6	15	4	5	65	16%	
	2A	0	0	0	1	3	0	0	0	0	0	0	0	0	4	1%	
	2B	1	0	0	0	0	0	0	0	1	1	0	0	0	3	1%	
	2C	3	0	2	0	3	2	2	3	1	1	0	2	2	19	5%	
	2D	5	1	7	4	10	3	4	8	2	7	3	5	5	59	14%	
	TLC	2	3	3	3	8	3	3	0	2	3	5	2	3	37	9%	
	Other	0	1	2	0	0	1	2	0	0	1	0	0	1	8	2%	

Performance Related Information for Staff & Managers

5. Major Incidents by Incident Location/Unit

Data Source: UI DB

Updated as of 11/14/12

Category		Nov-11	Dec-11	Jan-12	Feb-12	Mar-12	Apr-12	May-12	Jun-12	Jul-12	Aug-12	Sep-12	Oct-12	Monthly Average	Total (12mths)	Percent
Total Fall Incidents		13	9	22	14	24	23	20	21	25	20	22	9	19	222	100%
Fall Incident Location	1A	5	1	6	3	11	6	8	9	3	4	3	1	5	60	27%
	1B	0	2	1	3	0	3	1	4	2	5	3	2	2	26	12%
	1C	0	0	1	1	2	1	0	0	3	1	0	1	1	10	5%
	1D	1	0	1	0	0	1	0	0	4	0	0	1	1	8	4%
	1E	2	0	2	1	1	4	3	5	3	1	2	0	2	24	11%
	1F	1	0	0	0	1	0	0	0	0	0	0	0	0	2	1%
	1G	0	0	0	0	0	1	1	0	2	3	8	1	1	16	7%
	2A	1	0	1	0	0	0	0	0	1	0	0	0	0	3	1%
	2B	0	1	2	1	1	1	0	0	0	1	1	1	0	8	4%
	2C	0	0	2	0	3	1	3	0	0	0	2	1	1	12	5%
	2D	1	1	1	0	3	0	0	2	6	3	1	0	2	18	8%
	TLC	1	2	0	4	0	1	3	1	0	2	0	0	1	14	6%
	Other	1	2	5	1	2	4	1	0	1	0	2	2	2	21	9%
Total Injury Incidents		30	30	25	20	40	22	21	26	33	34	25	22	27	328	100%
Injury Incident Location	1A	3	3	2	3	2	1	3	5	1	4	2	4	3	33	10%
	1B	0	0	2	0	4	2	1	2	4	3	1	2	2	21	6%
	1C	0	1	2	0	2	1	0	0	3	1	0	2	1	12	4%
	1D	5	5	2	3	2	3	3	3	6	1	0	1	3	34	10%
	1E	3	4	1	2	5	2	2	3	2	4	3	2	3	33	10%
	1F	6	4	4	1	1	2	4	2	4	1	1	2	3	32	10%
	1G	4	3	1	5	2	6	1	3	2	5	9	3	4	44	13%
	2A	0	0	0	0	2	0	0	0	0	0	0	0	0	2	1%
	2B	1	0	1	0	1	0	0	0	0	1	0	0	0	4	1%
	2C	2	1	1	1	3	1	0	1	4	1	2	1	2	18	5%
	2D	4	1	2	0	7	0	3	5	4	7	2	1	3	36	11%
	TLC	1	2	0	4	5	1	2	0	2	5	2	2	2	26	8%
	Other	1	6	7	1	4	3	2	2	2	1	3	2	3	33	10%

* Not every incident is a major incident. This counts only those incidents that were classified to be major based on the policy.

Performance Related Information for Staff & Managers

6. Demographic Information of Individuals in Care

Data Source: Avatar

Updated as of 11/14/12

Category	Sub-group	Nov-11	Dec-11	Jan-12	Feb-12	Mar-12	Apr-12	May-12	Jun-12	Jul-12	Aug-12	Sep-12	Oct-12	Monthly Average	Percent*
Total Active (on Roll) at End of Month*		278	283	264	271	270	265	273	282	283	270	279	275	274	
Gender	Female	60	63	60	68	71	66	71	73	70	64	71	74	68	24.6%
	Male	218	220	204	203	199	199	202	209	213	206	208	201	207	75.4%
Age	Median Age (Years)	55 yrs	54 yrs	55 yrs	55 yrs	55 yrs	55 yrs	55 yrs	55 yrs	55 yrs	55 yrs	55 yrs	55 yrs	55 yrs	
	<30 years old	27	20	13	14	20	17	20	23	23	22	25	23	21	7.5%
	>=30 and <40 years old	20	28	29	33	33	28	36	37	33	29	28	27	30	11.0%
	>=40 and <50 years old	48	51	45	46	42	41	42	45	46	43	43	45	45	16.3%
	>=50 and <60 years old	103	102	95	96	96	99	93	92	94	89	91	88	95	34.6%
	>=60 years old	80	81	82	82	79	80	82	85	87	87	92	92	84	30.6%
Legal Status of Individuals on Roll at End of Month	Emergency	16	19	19	25	19	16	17	20	21	16	22	21	19	7.0%
	Inpatient Commitment	27	27	27	27	27	25	25	26	27	26	24	23	26	9.4%
	Outpatient Commitment	24	27	22	22	25	29	28	25	20	20	21	23	24	8.7%
	Voluntary	39	39	42	41	42	41	42	41	43	42	43	46	42	15.2%
	Civil Sub-total	106	112	110	115	113	111	112	112	111	104	110	113	111	40.4%
	DC Exam	60	63	49	50	50	45	49	57	59	56	59	55	54	19.8%
	Mentally Incompetent	3	2	3	2	4	6	7	8	8	6	5	3	5	1.7%
	NGBRI - DC	93	91	88	89	89	89	89	91	92	91	92	91	90	32.9%
	NGBRI - US	11	10	10	11	10	10	10	10	9	9	9	9	10	3.6%
	NGBRI - VI	1	1	1	1	1	1	1	1	1	1	1	1	1	0.4%
Dual Commitment	1	1	1	1	1	1	3	1	1	1	1	1	1	0.4%	
Sexual Psychopath (Miller Ac	3	3	2	2	2	2	2	2	2	2	2	2	2	0.8%	
	Forensic Sub-total	172	171	154	156	157	154	161	170	172	166	169	162	164	59.6%
Length of Stay	Median LOS (Days)	915 d	876 d	977 d	950 d	974 d	1042 d	1004 d	922 d	890 d	1063 d	946 d	1027 d	966 d	
	Average LOS (Days)	3053 d	2977 d	3150 d	3089 d	3088 d	3153 d	3047 d	2971 d	2976 d	3116 d	3030 d	3093 d	3062 d	
	<30 Days	29	33	27	32	32	26	30	32	32	20	32	27	29	10.7%
	>=30 ~ <365 Days	77	79	68	69	66	65	68	76	74	77	74	74	72	26.3%
	>= 1 Year & < 2 Years	20	20	22	21	23	22	24	21	23	20	21	22	22	7.9%
	>= 2 Years & < 5 Years	43	42	39	40	41	44	44	46	47	46	46	43	43	15.8%
	>= 5 Years & < 20 Years	62	63	63	64	63	62	62	62	62	61	60	62	62	22.7%
>= 20 Years	47	46	45	45	45	46	45	45	45	46	46	47	46	16.6%	

* Counts the total number of individuals who are on the hospital roll at end of each month. This number serves as denominator to calculate percentage of each group.