

**Government of the District of Columbia
Department of Mental Health (DMH)**

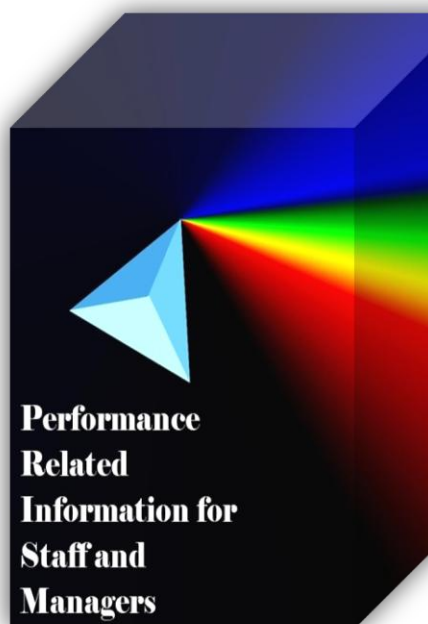


Performance Related Information for Staff and Managers

PRISM

JULY 2012

Table of Contents



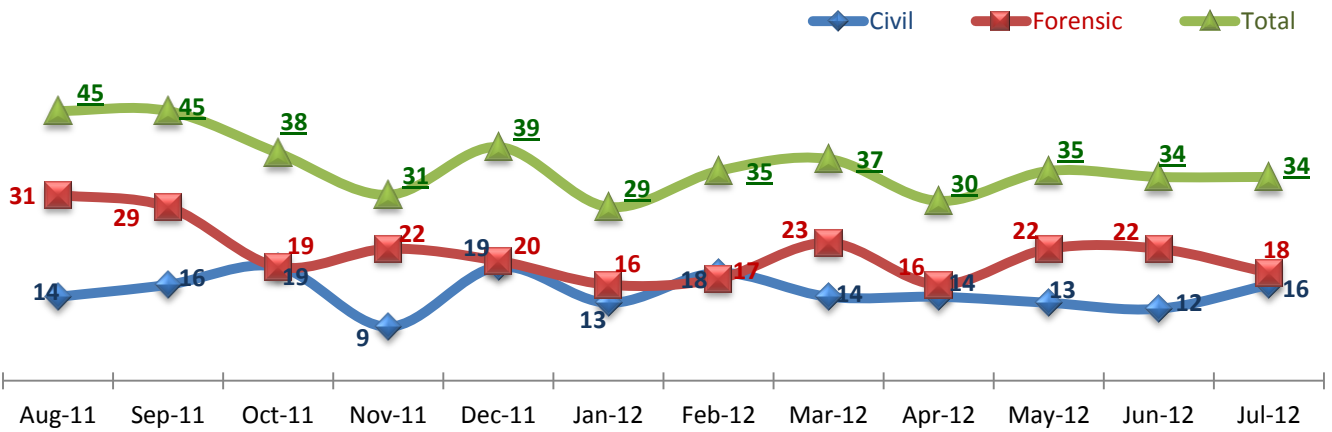
1.	Admissions to SEH	1
2.	Discharges from SEH.....	1
3.	Average Daily Census	1
4.	Transfers	2
5.	30-Day Readmission Rate	2
6.	Unusual Incidents.....	2
7.	Unusual Incidents by Severity	3
8.	Patient-Involved Unusual Incidents.....	3
9.	Selected Types of Incidents	4
10.	Physical Assaults by Severity	4
11.	Patient Injuries.....	5
12.	Staff Injuries.....	5
13.	Eloperments	5
14.	Reported Medication Variances	6
15.	Reported Adverse Drug Reactions	6
16.	Percent of Missing Documentation on Med-Administration.....	6
17.	Emergency Involuntary Medications Documented in eMar	7
18.	Percent of Patients Restrained or Secluded.....	7
19.	Restraint Hours Rate & Seclusion Hours Rate	7

<input type="checkbox"/>	<i>Appendix 1) Table – Census, Admissions & Discharges</i>
<input type="checkbox"/>	<i>Appendix 2) Table – Key Performance Indicators</i>
<input type="checkbox"/>	<i>Appendix 3) Table – Unusual Incident & Medication</i>
<input type="checkbox"/>	<i>Appendix 4) Table – Restraint & Seclusion</i>
<input type="checkbox"/>	<i>Appendix 5) Table – Major Incidents by Incident Location/Unit</i>
<input type="checkbox"/>	<i>Appendix 6) Table – Demographic Information of Individuals in Care</i>

8/13/2012

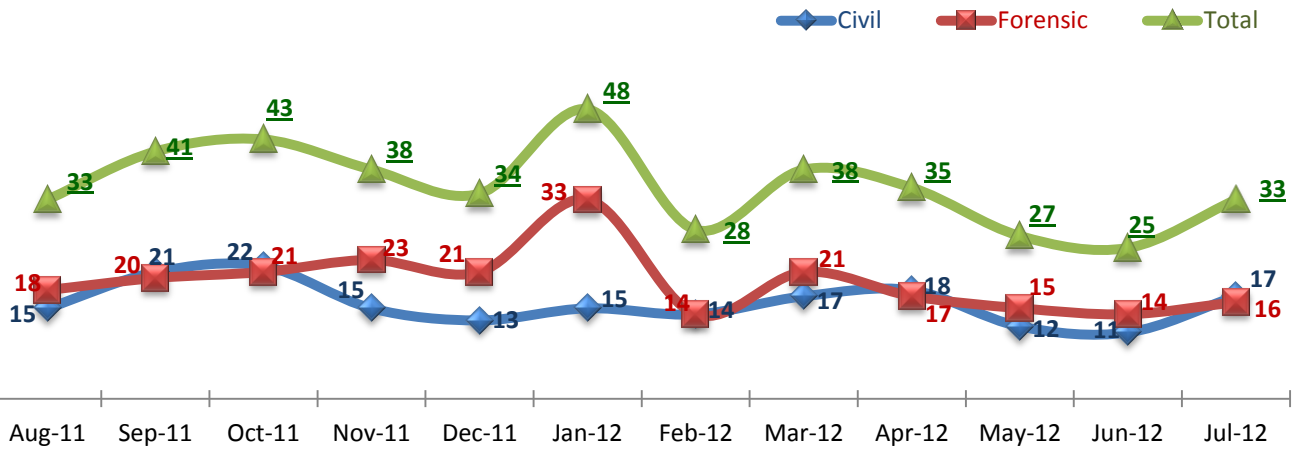
Office of Statistics and Reporting (OSR)

1. Admissions to SEH



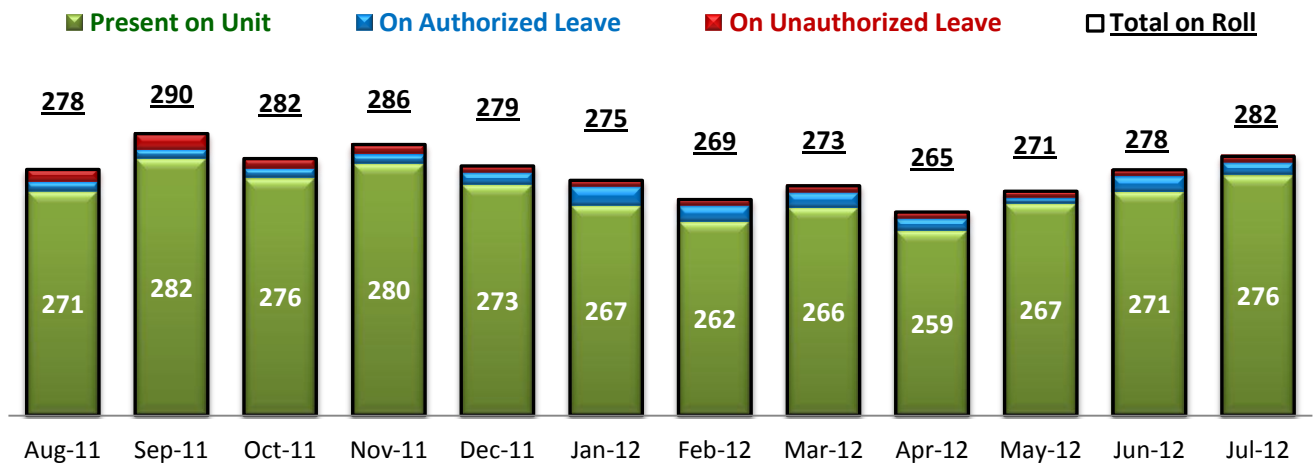
* Number of admissions to SEH inpatient program, including transfers from outpatient to inpatient program.

2. Discharges from SEH



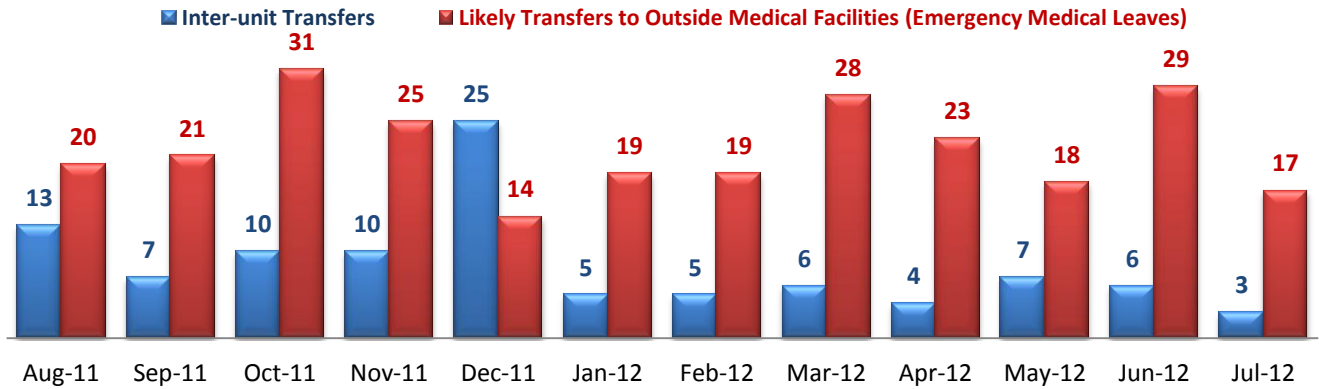
* Number of discharges from SEH inpatient program, including transfers from inpatient to outpatient program.

3. Average Daily Census



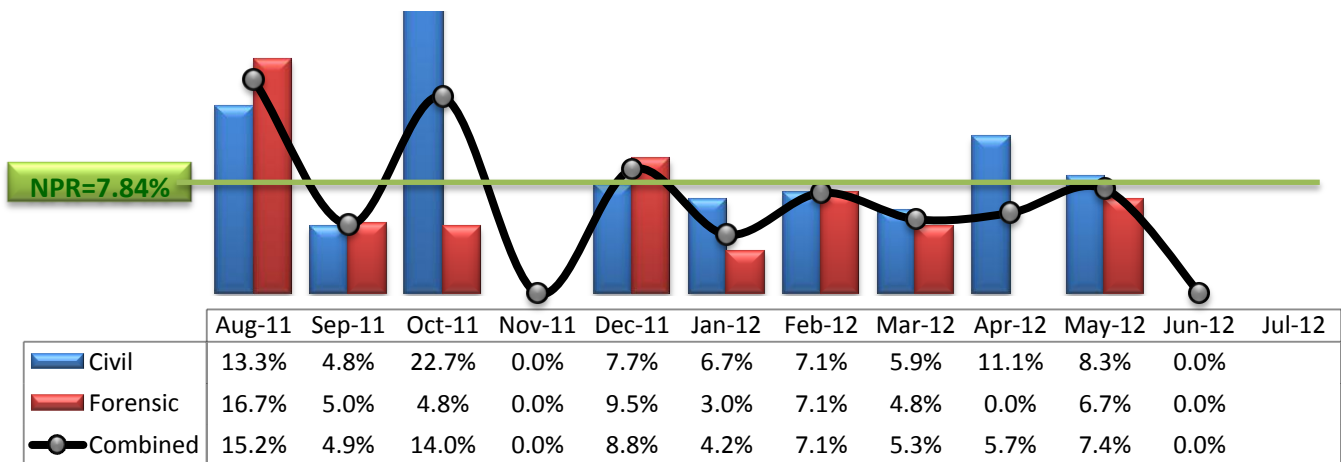
* Data above is the daily average number of individuals counted at 11:59 PM every day during each month.

4. Transfers



* Number of inter-unit transfers that occurred during month and number of emergency medical leaves that were initiated during month.

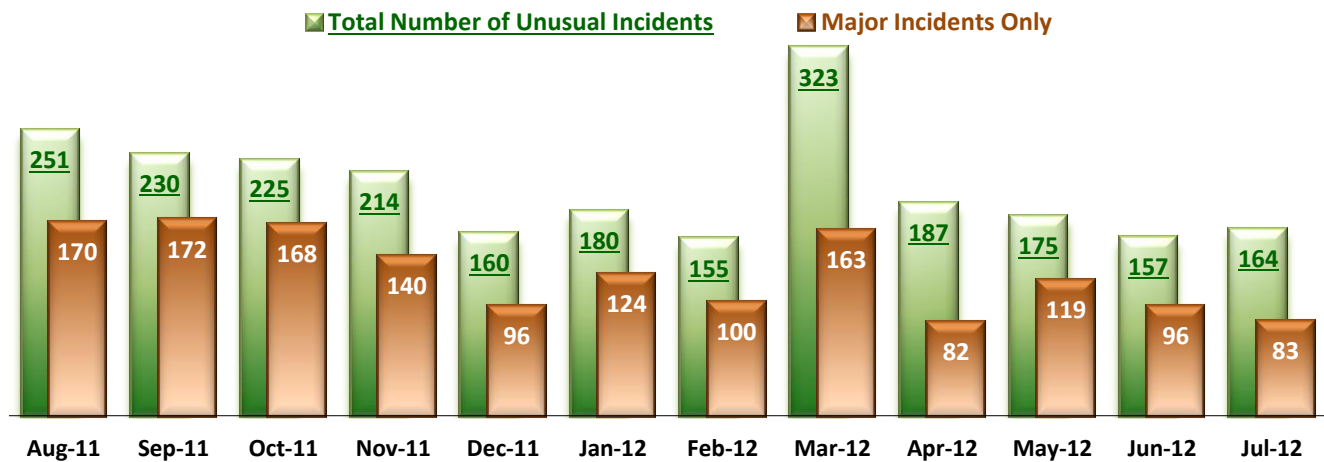
5. 30-Day Readmission Rate



* Percent of discharges that returned to SEH within 30 days of discharges. It does not include those who may have been re-hospitalized at another psychiatric facility. This measure requires 30-day observation following discharge.

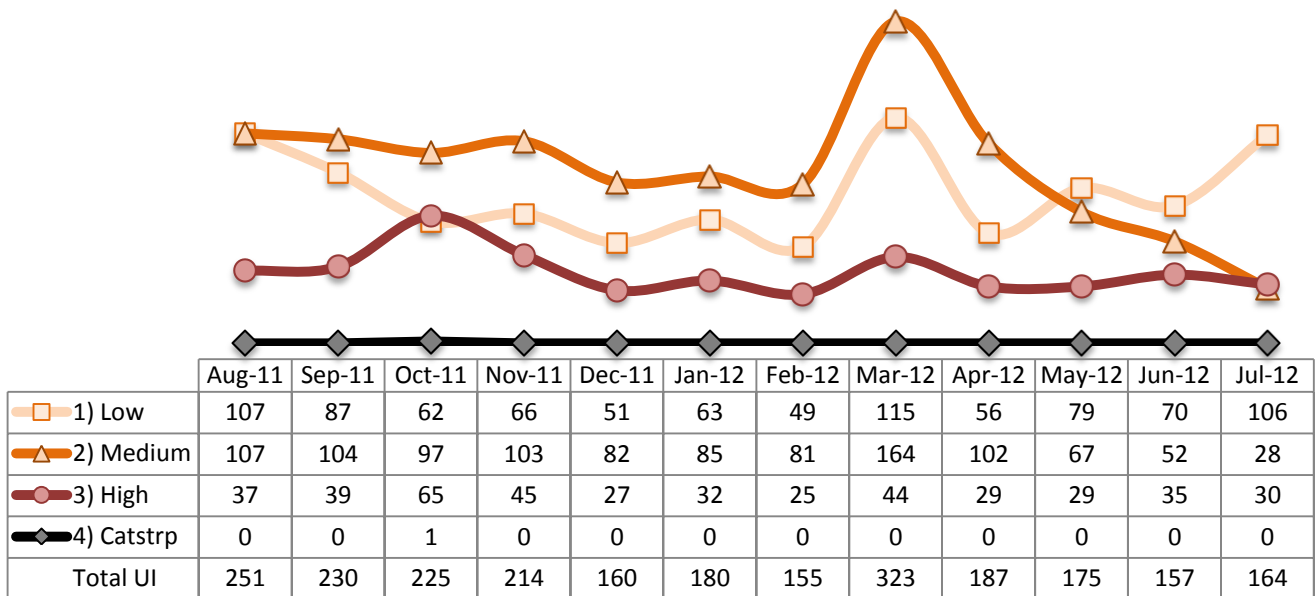
** NPR: National Public Rate as of December 2009 published by NASMHPD Research Institute in May 2010.

6. Unusual Incidents

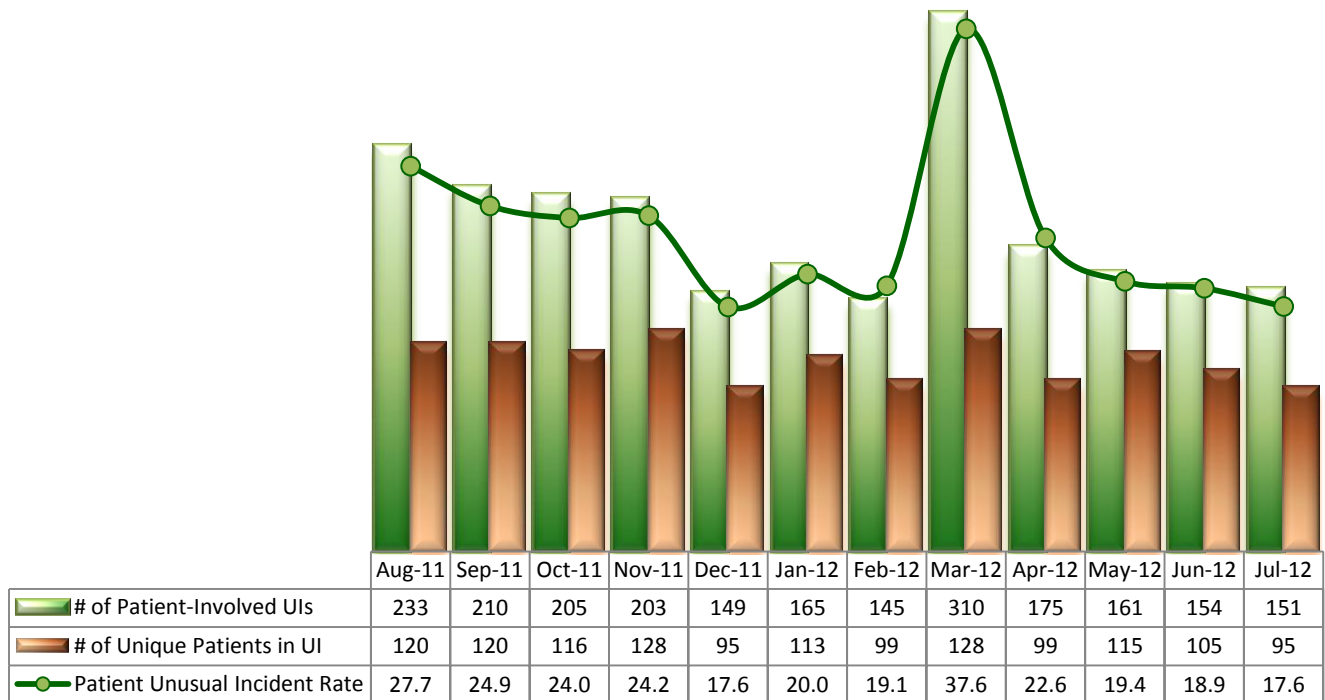


* Numbers above represent all types of the unusual incidents (UIs) that were reported to the Risk Manager by PRISM publication date, including those that did not involve any patients.

7. Unusual Incidents by Severity

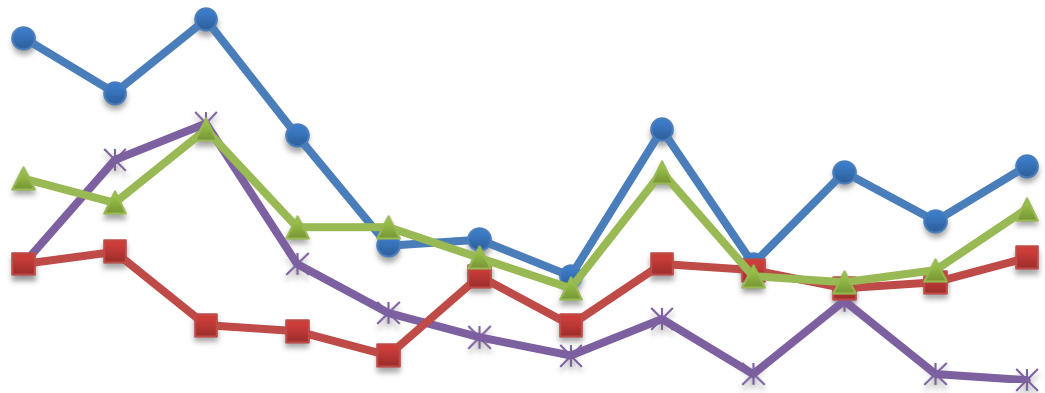


8. Patient-Involved Unusual Incidents



*The total number of patient-involved UIs counts only those incidents that involved at least one or more patients. Some patients may be involved in more than one incident and the number of unique patients does not double count them. The patient UI rate is the number of patient-involved unusual incidents reported for every 1000 inpatient days.

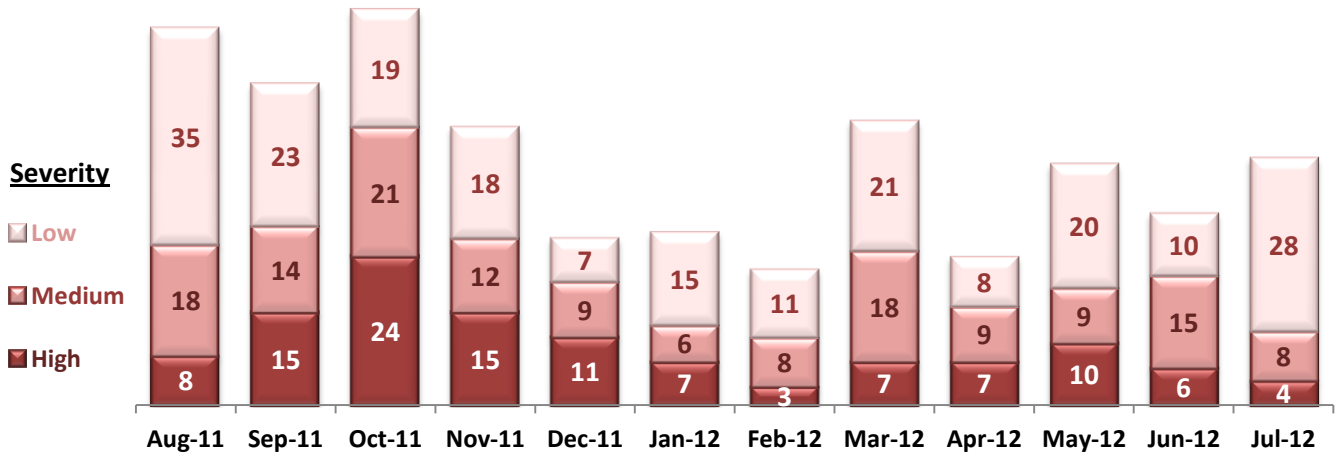
9. Selected Types of Incidents



	Aug-11	Sep-11	Oct-11	Nov-11	Dec-11	Jan-12	Feb-12	Mar-12	Apr-12	May-12	Jun-12	Jul-12
Physical Assault	61	52	64	45	27	28	22	46	24	39	31	40
Psych Emergency	24	41	47	24	16	12	9	15	6	18	6	5
Fall	24	26	14	13	9	22	14	24	23	20	21	25
Injury	38	34	46	30	30	25	20	39	22	21	23	33

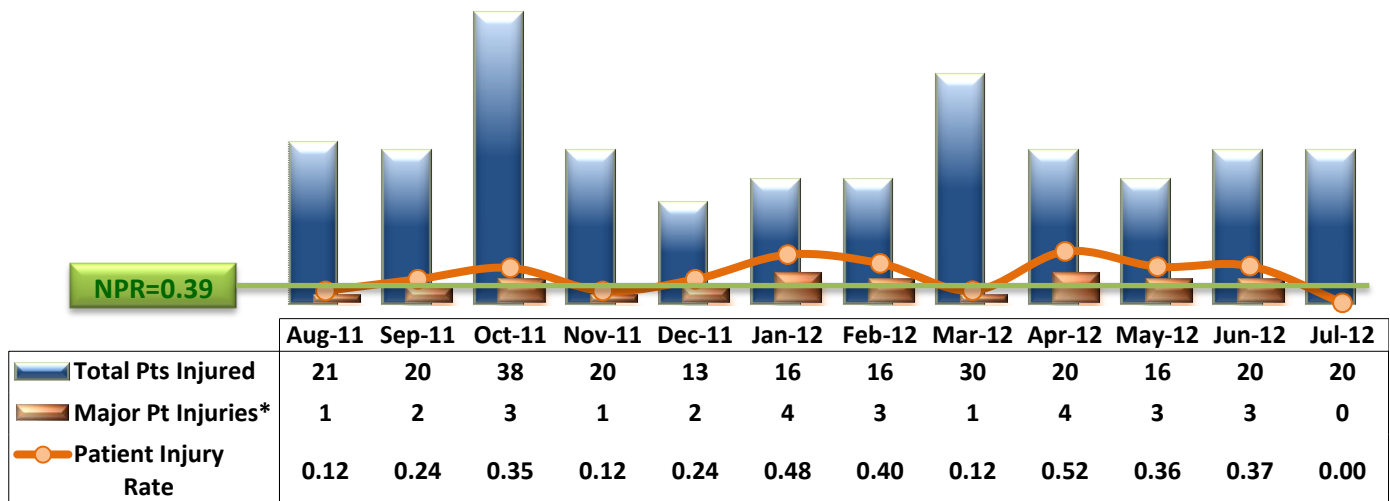
* These are incident types that are frequently reported. Some incidents may be counted in multiple categories. For example, a physical assault incident that accompanied psychiatric emergency and injury is counted under psychiatric emergency and injury as well as under physical assault. Injury is broadly defined to include any type of injuries regardless of the cause or severity level.

10. Physical Assaults by Severity



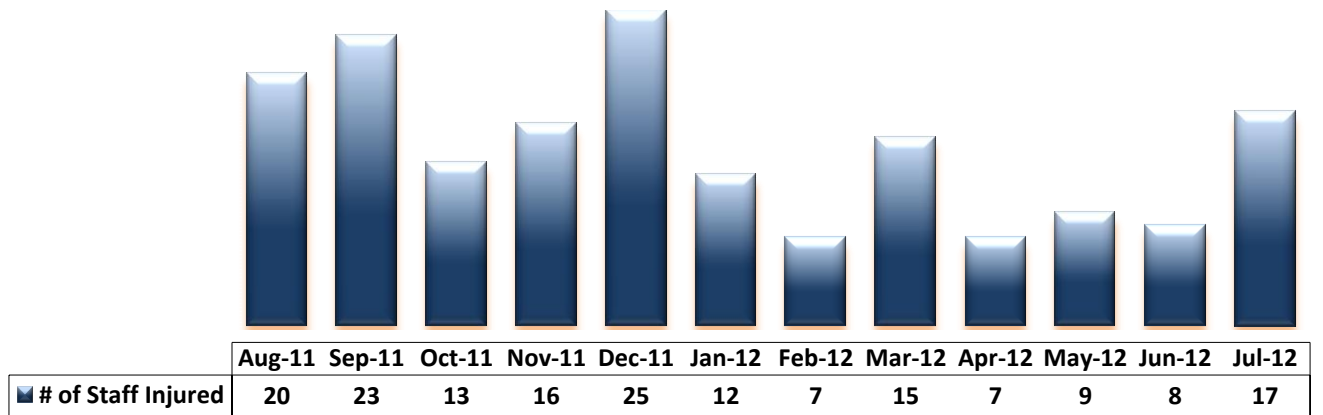
*Any physical assault that accompanies a code 13 or results in extensive injury needing off-unit treatment or transfer to ER is considered to be high severity, any physical assault that causes a minor injury that can be treated on unit is considered to be medium severity, and physical assault events that result in no injury are considered to be low severity.

11. Patient Injuries



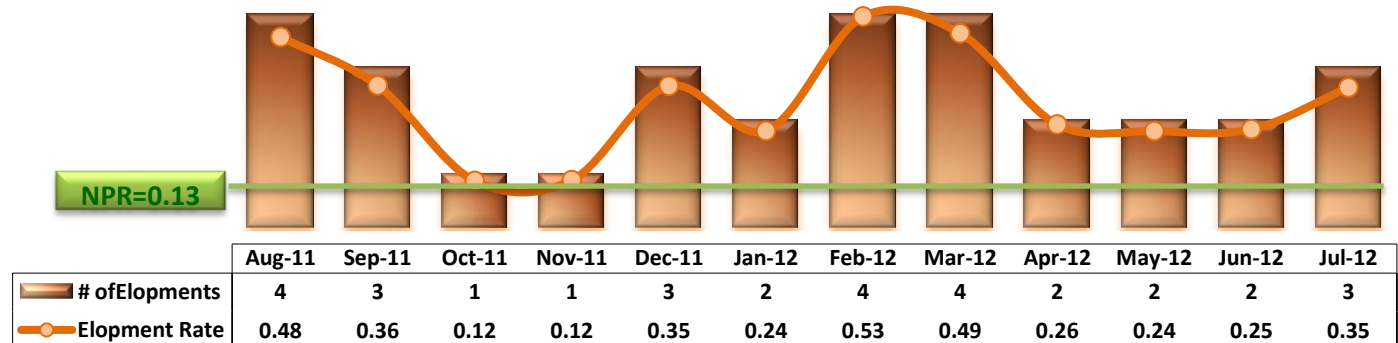
* Injury is broadly defined to include any type of injuries regardless of the cause or severity level. The total number of patients injured represents all of the reported injuries including minor injuries treated with first aid alone. However, the patient injury rate considers only the number of patient injuries that required beyond first-aid level treatment based on the NRI definition and the patient injury rate is the number of 'major' patient injuries per every 1000 inpatient days

12. Staff Injuries



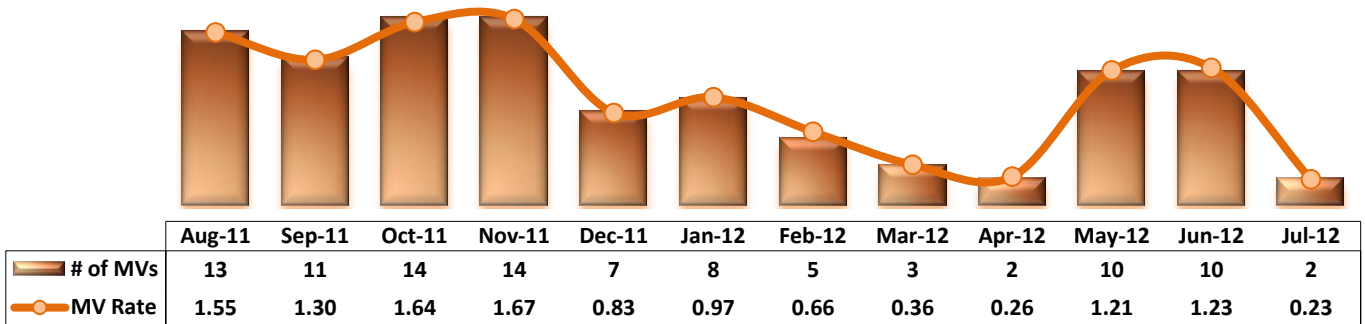
* Injury is broadly defined to include any type of injuries regardless of the cause or severity level. The total number of staff injured represents all of the reported staff injuries including minor injuries treated with first aid alone.

13. Elopements



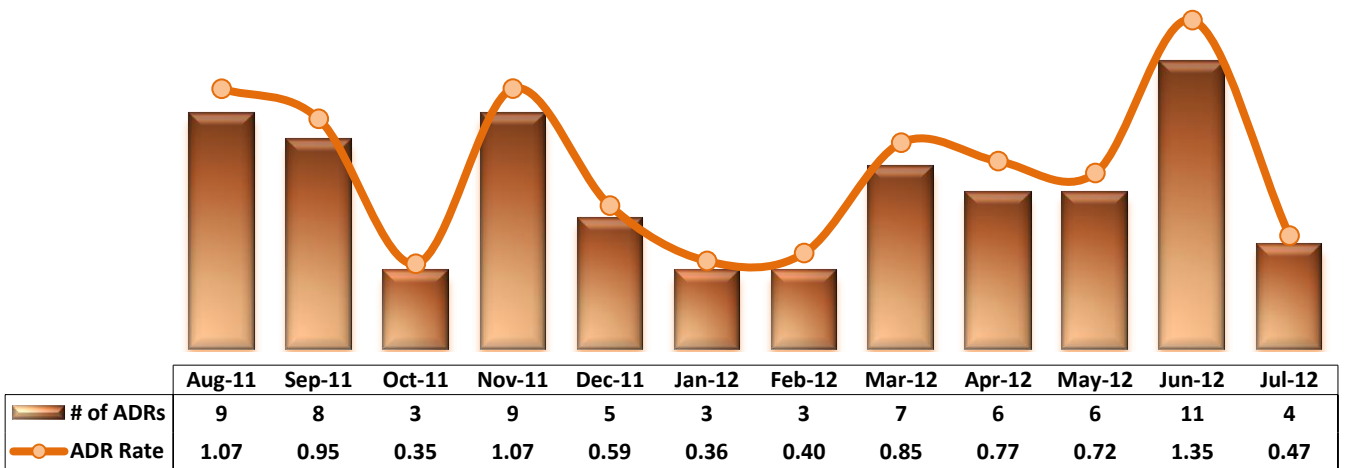
* It counts the total number of unauthorized leaves for any duration that were initiated during month and were recorded in Avatar. The elopement rate is the number of those unauthorized leaves that occurred for every 1000 inpatient days.

14. Reported Medication Variances



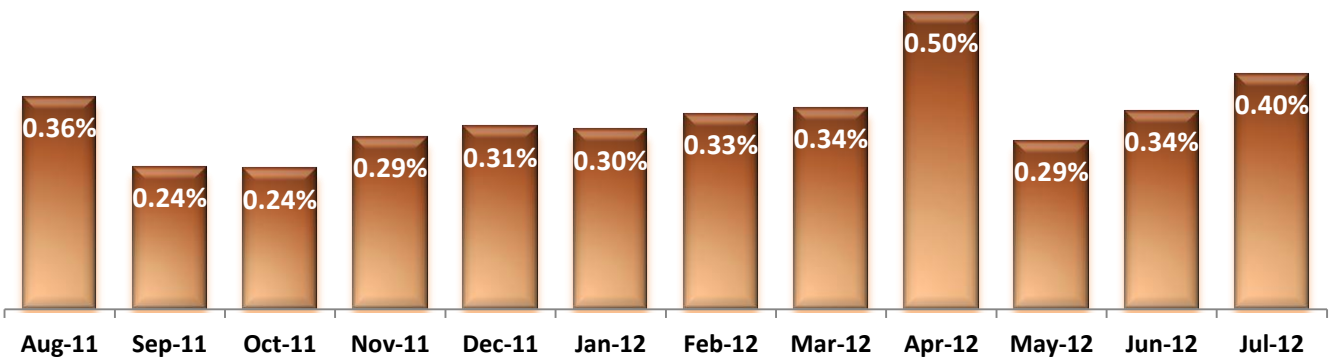
* MV Rate: Number of reported medication variance events that occurred for every 1000 inpatient days.

15. Reported Adverse Drug Reactions



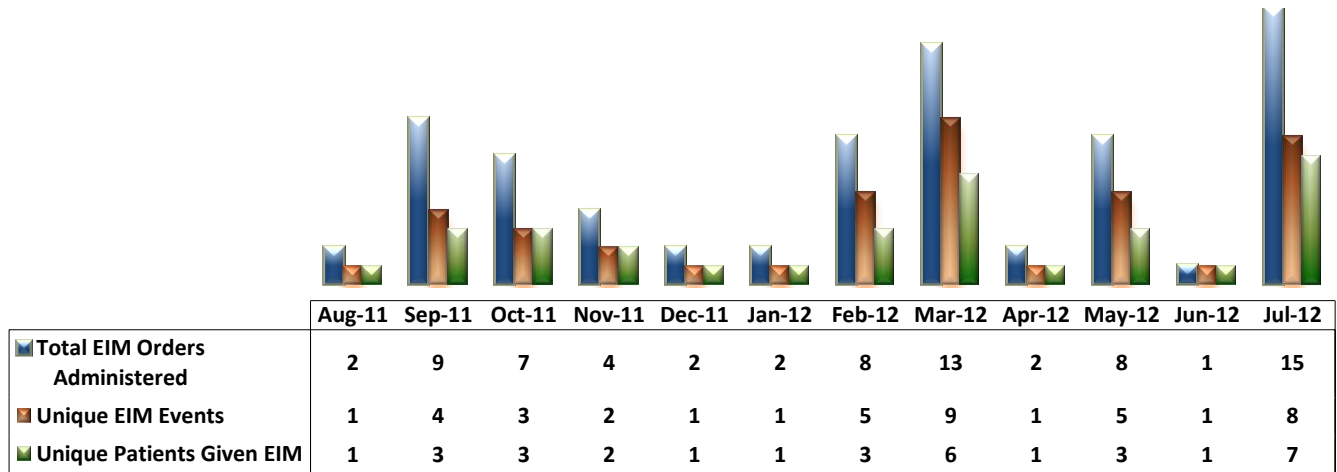
* ADR Rate: Number of reported adverse drug reaction events that occurred for every 1000 inpatient days.

16. Percent of Missing Documentation on Med-Administration



* June-2011 data is not available because of data tracking interruption caused by a technical glitch in Avatar. September-2011 data does not include administration records associated with new orders placed between 9/22/11 and 9/25/11 due to a technical issue that occurred in Avatar and Worx during that time period.

17. Emergency Involuntary Medications Documented in eMar

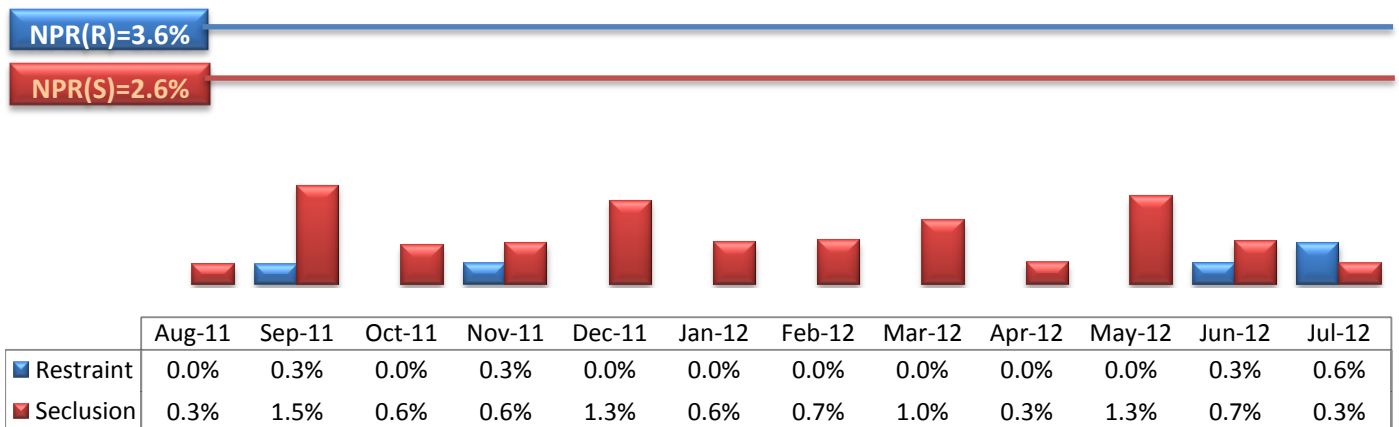


* Some patients may have experienced multiple EIM events during month and some events may have involved multiples doses of medication ordered and administered.

** Data prior to October 2011 may include 'now' orders in addition to stat emergency orders.

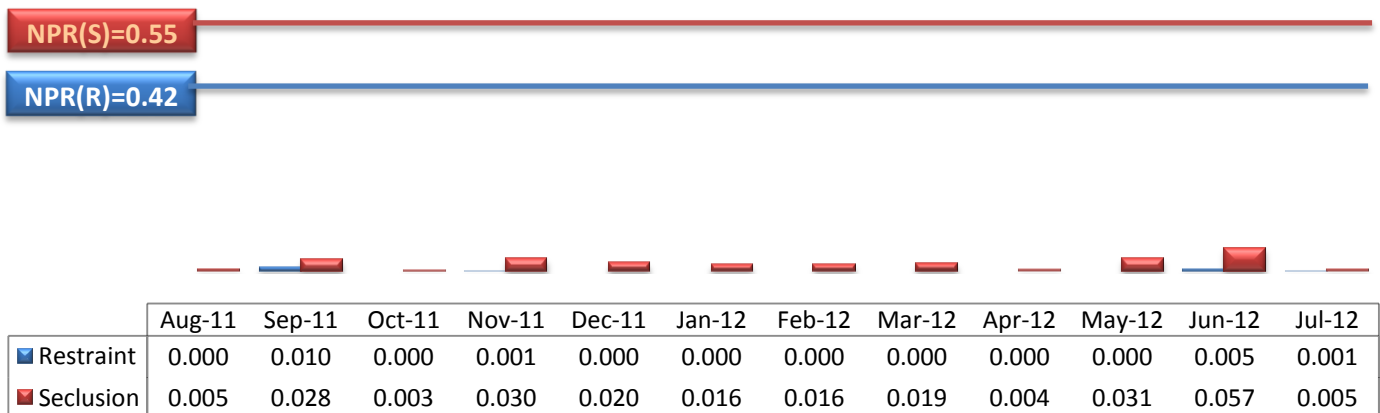
*** A number of EIMs may not be included above due to a technical glitch that delayed or prevented proper documentation of medication administration results on eMar. Thus, the actual number of EIM is likely to be much higher than the above number. The issue has not been resolved completely yet as of this report date.

18. Percent of Patients Restrained or Secluded



* Percent of unique patients who were restrained at least once and percent of unique patients who were secluded at least once. The denominator includes all individuals who were served in care >=1 day during month.

19. Restraint Hours Rate & Seclusion Hours Rate



* Restraint/Seclusion Hours Rate: Number of hours spent in restraint/seclusion for every 1000 inpatient hours.

Performance Related Information for Staff & Managers

1. Census, Admissions, Discharges & Transfers

Data Source: Avatar

Updated as of 08/10/12

Category	Aug-11	Sep-11	Oct-11	Nov-11	Dec-11	Jan-12	Feb-12	Mar-12	Apr-12	May-12	Jun-12	Jul-12	Monthly Average	Total (12mths)	Figure	
Admissions	Civil	14	16	19	9	19	13	18	14	14	13	12	16	15	177	Figure 1
	Forensic	31	29	19	22	20	16	17	23	16	22	22	18	21	255	
	Total	45	45	38	31	39	29	35	37	30	35	34	34	36	432	
Discharges	Civil	15	21	22	15	13	15	14	17	18	12	11	17	16	190	Figure 2
	Forensic	18	20	21	23	21	33	14	21	17	15	14	16	19	233	
	Total	33	41	43	38	34	48	28	38	35	27	25	33	35	423	
Net Gain During Month	Civil	-1	-5	-3	-6	6	-2	4	-3	-4	1	1	-1		-13	
	Forensic	13	9	-2	-1	-1	-17	3	2	-1	7	8	2		22	
	Total	12	4	-5	-7	5	-19	7	-1	-5	8	9	1		9	
All Individuals on Roll at End of Month	286	290	285	278	283	264	271	270	265	273	282	283	278			
a. Present on Unit	280	280	279	272	275	259	266	262	260	267	275	277	271			
b. On AL	1	6	3	3	6	3	3	6	3	5	5	4	4			
c. On UL	5	4	3	3	2	2	2	2	2	1	2	2	3			
All Individuals on Roll: Daily Average during Month	278	290	282	286	279	275	269	273	265	271	278	282	277			
a. Present on Unit*	271	282	276	280	273	267	262	266	259	267	271	276	271		Figure 3	
b. On AL	3	3	3	3	4	6	5	5	4	2	5	4	4			
c. On UL	4	5	3	3	2	2	2	2	2	2	2	2	3			
Patient Days*	8407	8448	8544	8402	8471	8268	7588	8246	7759	8284	8132	8568	8260	99117		
Inter-Unit Transfers during Month	13	7	10	10	25	5	5	6	4	7	6	3	8	101	Figure 4	
Medical Leaves Initiated during Month	20	21	31	25	14	19	19	28	23	18	29	17	22	264		
Emergency	15	12	14	12	13	10	17	29	29	34	46	43	23	274		
Non-Emer																
Total	35	33	45	37	27	29	36	57	52	52	75	60	45	538		
Non-Medical Leaves Initiated during Month	63	53	64	66	82	91	74	99	105	145	142	126	93	1110		
UL Initiated during Month	4	3	1	1	3	2	4	4	2	2	2	3	3	31		
Total Unique Patients Served during Month	319	331	330	315	314	311	298	306	300	298	306	316	312			
30 Day Readmission **	Civil	2	1	5	0	1	1	1	1	2	1	0		1	15	
	Forensic	3	1	1	0	2	1	1	1	0	1	0		1	11	
	Total	5	2	6	0	3	2	2	2	2	2	0		2	26	

* Counts the number of patients who are present on the unit and excludes those on authorized or unauthorized leave at 11:59pm on a given day.

** Number of patients returning within 30 days of discharges that occurred during month.

Performance Related Information for Staff & Managers

2. Key Performance Indicators

Data Source: UI DB, ADR DB, Restraint/Seclusion Log, and Avatar

Updated as of 08/10/12

Category	Aug-11	Sep-11	Oct-11	Nov-11	Dec-11	Jan-12	Feb-12	Mar-12	Apr-12	May-12	Jun-12	Jul-12	Monthly Average	NPR* (Dec-09)	Figure
30 Day Readmit (Discharge Cohort)**	Civil	13.3%	4.8%	22.7%	0.0%	7.7%	6.7%	7.1%	5.9%	11.1%	8.3%	0.0%	8.6%		Figure 5
	Forensic	16.7%	5.0%	4.8%	0.0%	9.5%	3.0%	7.1%	4.8%	0.0%	6.7%	0.0%	5.2%		
	Combined	15.2%	4.9%	14.0%	0.0%	8.8%	4.2%	7.1%	5.3%	5.7%	7.4%	0.0%	6.7%	7.8%	
Number of Unusual Incidents	251	230	225	214	160	180	155	323	187	175	157	164	202		Figure 6
UI by Severity	Catastrophe			1								0	0		Figure 7
	High	37	39	65	45	27	32	25	44	29	29	35	30	36	
	Medium	107	104	97	103	82	85	81	164	102	67	52	28	89	
	Low	107	87	62	66	51	63	49	115	56	79	70	106	76	
Patient Unusual Incident Rate	27.7	24.9	24.0	24.2	17.6	20.0	19.1	37.6	22.6	19.4	18.9	17.6	22.8		Figure 8
Selected Types of Incidents	Physical Assault	61	52	64	45	27	28	22	46	24	39	31	40	40	Figure 9
	Psych Emergency	24	41	47	24	16	12	9	15	6	18	6	5	19	
	Fall	24	26	14	13	9	22	14	24	23	20	21	25	20	
	Injury	38	34	46	30	30	25	20	39	22	21	23	33	30	
Assaults by Severity	Physical High	8	15	24	15	11	7	3	7	7	10	6	4	10	Figure 10
	Medium	18	14	21	12	9	6	8	18	9	9	15	8	12	
	Low	35	23	19	18	7	15	11	21	8	20	10	28	18	
Patient Injury Rate***	0.12	0.24	0.35	0.12	0.24	0.48	0.40	0.12	0.52	0.36	0.37	0.00	0.27	0.39	Figure 11
Patients with Major Injuries***	1	2	3	1	2	4	3	1	4	3	3	0	2		
Total Patients Injured***	21	20	38	20	13	16	16	30	20	16	20	20	21		
Total Staff Injured***	20	23	13	16	25	12	7	15	7	9	8	17	14		Figure 12
Elopement Rate	0.48	0.36	0.12	0.12	0.35	0.24	0.53	0.49	0.26	0.24	0.25	0.35	0.40	0.13	Figure 13
Medication Variance Rate	1.55	1.30	1.64	1.67	0.83	0.97	0.66	0.36	0.26	1.21	1.23	0.23	1.00		Figure 14
Adverse Drug Reaction Rate	1.07	0.95	0.35	1.07	0.59	0.36	0.40	0.85	0.77	0.72	1.35	0.47	0.75		Figure 15
Missing Med-Admin Documentation	0.36%	0.24%	0.24%	0.29%	0.31%	0.30%	0.33%	0.34%	0.50%	0.29%	0.34%	0.40%	0.33%		Figure 16
Emergency Involuntary Meds	2	9	7	4	2	2	8	13	2	8	1	15	6		Figure 17
Unique EIM Events	1	4	3	2	1	1	5	9	1	5	1	8	3		
Unique Patients given EIM	1	3	3	2	1	1	3	6	1	3	1	7	3		
Percent of Patients Restrained	0.0%	0.3%	0.0%	0.3%	0.0%	0.0%	0.0%	0.0%	0.0%	0.0%	0.3%	0.6%	0.1%	3.6%	Figure 18
Percent of Patients Secluded	0.3%	1.5%	0.6%	0.6%	1.3%	0.6%	0.7%	1.0%	0.3%	1.3%	0.7%	0.3%	0.8%	2.6%	
Restraint Hours Rate	0.000	0.010	0.000	0.001	0.000	0.000	0.000	0.000	0.000	0.000	0.005	0.001	0.001	0.42	Figure 19
Seclusion Hours Rate	0.005	0.028	0.003	0.030	0.020	0.016	0.016	0.019	0.004	0.031	0.057	0.005	0.020	0.55	

* National Public Rate, NASMHPD Research Institute

** Percentage of patients returning within 30 days of discharges that occurred during month

Performance Related Information for Staff & Managers

3. Unusual Incident & Medication

Data Source: UI DB, ADR DB, and Avatar

Updated as of 08/10/12

Category	Aug-11	Sep-11	Oct-11	Nov-11	Dec-11	Jan-12	Feb-12	Mar-12	Apr-12	May-12	Jun-12	Jul-12	Monthly Average	Total (12mths)	NPR* (Dec-09)
Total Unusual Incidents**	251	230	225	214	160	180	155	323	187	175	157	164	202	2421	
Total Major Unusual Incidents	170	172	168	140	96	124	100	163	82	119	96	83	126	1513	
Patient Involved UI Only**	233	210	205	203	149	165	145	310	175	161	154	151	188	2261	
<i>Patient UI Rate</i>	27.7	24.9	24.0	24.2	17.6	20.0	19.1	37.6	22.6	19.4	18.9	17.6	22.8		
Unique Patients Involved in UI**	120	120	116	128	95	113	99	128	99	115	105	95	111	1333	
Selected Types of Incidents															
Physical Assault	61	52	64	45	27	28	22	46	24	39	31	40	40	479	
Psych Emergency	24	41	47	24	16	12	9	15	6	18	6	5	19	223	
Fall	24	26	14	13	9	22	14	24	23	20	21	25	20	235	
Injury	38	34	46	30	30	25	20	39	22	21	23	33	30	361	
UI by Catastrophe	0	0	1	0	0	0	0	0	0	0	0	0	0	1	
High Severity	37	39	65	45	27	32	25	44	29	29	35	30	36	437	
Medium Severity	107	104	97	103	82	85	81	164	102	67	52	28	89	1072	
Low Severity	107	87	62	66	51	63	49	115	56	79	70	106	76	911	
Physical Assaults by Severity															
High	8	15	24	15	11	7	3	7	7	10	6	4	10	117	
Medium	18	14	21	12	9	6	8	18	9	9	15	8	12	147	
Low	35	23	19	18	7	15	11	21	8	20	10	28	18	215	
Total Patients Injured***	21	20	38	20	13	16	16	30	20	16	20	20	21	250	
Patients with Major Injuries***	1	2	3	1	2	4	3	1	4	3	3	0	2	27	
<i>Patient Injury Rate***</i>	0.12	0.24	0.35	0.12	0.24	0.48	0.40	0.12	0.52	0.36	0.37	0.00	0.27		0.39
Total Staff Injured**	20	23	13	16	25	12	7	15	7	9	8	17	14		
Total UL Incident Reports	3	5	4	1	3	2	5	5	2	3	4	3	3	40	
Total ULs Documented in Avatar	4	3	1	1	3	2	4	4	2	2	2	3	3		
<i>Elopement Rate</i>	0.48	0.36	0.12	0.12	0.35	0.24	0.53	0.49	0.26	0.24	0.25	0.35	0.40		0.13
Med Variance (MV) Reports**	13	11	14	14	7	8	5	3	2	10	10	2	8	99	
<i>MV Rate</i>	1.55	1.30	1.64	1.67	0.83	0.97	0.66	0.36	0.26	1.21	1.23	0.23	1.00		
Adverse Drug Reactions Reports	9	8	3	9	5	3	3	7	6	6	11	4	6	74	
<i>ADR Rate</i>	1.07	0.95	0.35	1.07	0.59	0.36	0.40	0.85	0.77	0.72	1.35	0.47	0.75		
Total Med Administrations Scheduled	96945	95639	103346	101392	101756	99731	93833	105273	101205	108557	105239	108563		1221479	
Total Missing Documentations	349	231	246	297	315	304	311	360	511	311	354	433		4022	
<i>Percent of Missing Documentation</i>	0.36%	0.24%	0.24%	0.29%	0.31%	0.30%	0.33%	0.34%	0.50%	0.29%	0.34%	0.40%		0.33%	
Total Patients with >=3 STATs	10	12	9	9	2	4	7	7	3	8	7	10	7		
Total STAT Orders	67	87	74	74	30	40	53	51	38	81	51	82	61		
Emergency STAT Med Orders Administered Involuntarily (EIM)															
Unique EIM Events	2	9	7	4	2	2	8	13	2	8	1	15	6		
Unique Patients given EIM	1	4	3	2	1	1	5	9	1	5	1	8	3		
	1	3	3	2	1	1	3	6	1	3	1	7	3		

* National Public Rate, NASMHPD Research Institute

** Numbers may change if any additional UI report is made after the data run date from UI database (around the 15th of the following month).

*** Avatar report that indicates the number of patients with 3 or more STATs was unavailable at report run time

Performance Related Information for Staff & Managers

4. Restraint & Seclusion

Data Source: Restraint/Seclusion Log and UI DB (for # of total events and patients) and Avatar (for patient days/hours)

Updated as of 08/10/12

Category	Aug-11	Sep-11	Oct-11	Nov-11	Dec-11	Jan-12	Feb-12	Mar-12	Apr-12	May-12	Jun-12	Jul-12	Monthly Average	Total (12mths)	NPR* (Dec-09)
Number of Restraint Events	0	1	0	1	0	0	0	0	0	0	1	2	0.4	5	
Number of Unique Patients Restrained	0	1	0	1	0	0	0	0	0	0	1	2	0.4		
Percentage of Patients Restrained	0.0%	0.3%	0.0%	0.3%	0.0%	0.0%	0.0%	0.0%	0.0%	0.0%	0.3%	0.6%	0.1%		3.6%
Total Restraint Hours (h:mm)	0:00	2:00	0:00	0:15	0:00	0:00	0:00	0:00	0:00	0:00	1:00	0:13	0:17	3:28	
Restraint Hours Rate	0.000	0.010	0.000	0.001	0.000	0.000	0.000	0.000	0.000	0.000	0.005	0.001	0.001		0.42
Number of Seclusion Events	1	6	2	5	5	2	2	3	1	6	3	1	3.1	37	
Number of Unique Patients Secluded	1	5	2	2	4	2	2	3	1	4	2	1	2.4		
Percentage of Patients Secluded	0.3%	1.5%	0.6%	0.6%	1.3%	0.6%	0.7%	1.0%	0.3%	1.3%	0.7%	0.3%	0.8%		2.6%
Total Seclusion Hours (h:mm)	1:00	5:37	0:35	6:04	4:10	3:13	3:00	3:50	0:45	6:08	11:10	1:00	3:52	46:32	
Seclusion Hours Rate	0.005	0.028	0.003	0.030	0.020	0.016	0.016	0.019	0.004	0.031	0.057	0.005	0.020		0.55

* National Public Rate, NASMHPD Research Institute

Performance Related Information for Staff & Managers

5. Major Incidents by Incident Location/Unit

Data Source: UI DB

Updated as of 08/10/12

Category		Aug-11	Sep-11	Oct-11	Nov-11	Dec-11	Jan-12	Feb-12	Mar-12	Apr-12	May-12	Jun-12	Jul-12	Monthly Average	Total (12mths)	Percent
Total Unusual Incidents		251	230	225	214	160	180	155	323	187	175	157	164	202	2421	
Total Major Incidents*		170	172	168	140	96	124	100	163	82	119	96	83	126	1513	100%
Major Incident Location	1A	18	16	13	12	11	13	11	16	3	17	12	4	12	146	10%
	1B	19	24	16	14	8	14	12	17	22	7	9	5	14	167	11%
	1C	10	8	7	1	6	8	3	15	15	12	5	8	8	98	6%
	1D	4	15	29	20	11	9	6	5	4	11	8	9	11	131	9%
	1E	23	29	27	10	8	8	7	15	1	11	17	10	14	166	11%
	1F	3	20	14	17	10	5	10	11	8	14	11	16	12	139	9%
	1G	22	16	24	17	7	11	8	10	10	7	8	8	12	148	10%
	2A	5	3	2	4	3	3	4	7	0	2	0	3	3	36	2%
	2B	1	2	3	2	1	3	2	2	2	1	1	1	1	21	1%
	2C	8	4	6	13	7	8	6	16	9	11	5	2	8	95	6%
	2D	21	9	3	11	6	12	8	18	1	7	10	9	10	115	8%
	TLC	16	11	9	13	9	12	14	21	4	11	4	6	11	130	9%
	Other	20	15	15	6	9	18	9	10	3	8	6	2	10	121	8%
Total Physical Assault Incidents		61	52	64	45	27	28	22	46	24	39	31	40	40	479	100%
Assault Incident Location	1A	5	6	4	2	4	1	0	1	0	6	4	2	3	35	7%
	1B	6	0	2	0	1	1	0	4	0	1	0	3	2	18	4%
	1C	2	2	2	0	2	4	0	3	3	0	1	2	2	21	4%
	1D	0	5	15	11	5	4	4	2	2	4	2	4	5	58	12%
	1E	11	11	8	4	3	0	5	8	4	5	5	8	6	72	15%
	1F	2	7	6	7	3	0	1	1	2	10	3	10	4	52	11%
	1G	8	9	17	10	4	4	4	3	4	2	4	4	6	73	15%
	2A	0	0	0	0	0	0	1	3	0	0	0	0	0	4	1%
	2B	0	1	0	1	0	0	0	0	0	0	0	1	0	3	1%
	2C	4	1	3	3	0	2	0	3	2	2	3	1	2	24	5%
	2D	10	4	1	5	1	6	4	10	3	4	9	2	5	59	12%
	TLC	9	3	5	2	3	4	3	8	3	3	0	2	4	45	9%
	Other	4	3	1	0	1	2	0	0	1	2	0	1	1	15	3%

Performance Related Information for Staff & Managers

5. Major Incidents by Incident Location/Unit

Data Source: UI DB

Updated as of 08/10/12

Category		Aug-11	Sep-11	Oct-11	Nov-11	Dec-11	Jan-12	Feb-12	Mar-12	Apr-12	May-12	Jun-12	Jul-12	Monthly Average	Total (12mths)	Percent
Total Fall Incidents		24	26	14	13	9	22	14	24	23	20	21	25	20	235	100%
Fall Incident Location	1A	4	3	4	5	1	6	3	11	6	8	9	3	5	63	27%
	1B	4	13	4	0	2	1	3	0	3	1	4	2	3	37	16%
	1C	3	0	1	0	0	1	1	2	1	0	0	3	1	12	5%
	1D	0	1	0	1	0	1	0	0	1	0	0	4	1	8	3%
	1E	2	1	0	2	0	2	1	1	4	3	5	3	2	24	10%
	1F	0	2	1	1	0	0	0	1	0	0	0	0	0	5	2%
	1G	0	1	1	0	0	0	0	0	1	1	0	2	1	6	3%
	2A	1	0	0	1	0	1	0	0	0	0	0	1	0	4	2%
	2B	1	0	0	0	1	2	1	1	1	1	0	0	1	7	3%
	2C	0	1	0	0	0	2	0	3	1	3	0	0	1	10	4%
	2D	5	1	1	1	1	1	0	3	0	0	2	6	2	21	9%
	TLC	3	1	1	1	2	0	4	0	1	3	1	0	1	17	7%
	Other	1	2	1	1	2	5	1	2	4	1	0	1	2	21	9%
Total Injury Incidents		38	34	46	30	30	25	20	39	22	21	23	33	30	361	100%
Injury Incident Location	1A	6	3	3	3	3	2	3	2	1	3	5	1	3	35	10%
	1B	2	4	3	0	0	2	0	4	2	1	1	4	2	23	6%
	1C	3	0	2	0	1	2	0	2	1	0	0	3	1	14	4%
	1D	0	3	8	5	5	2	3	2	3	3	3	5	4	42	12%
	1E	6	6	9	3	4	1	2	5	2	2	2	2	4	44	12%
	1F	0	4	3	6	4	4	1	0	2	4	2	4	3	34	9%
	1G	5	3	8	4	3	1	5	2	6	1	3	2	4	43	12%
	2A	0	0	1	0	0	0	0	2	0	0	0	0	0	3	1%
	2B	1	0	0	1	0	1	0	1	0	0	0	0	0	4	1%
	2C	4	1	1	2	1	1	1	3	1	0	1	4	2	20	6%
	2D	2	4	1	4	1	2	0	7	0	3	4	5	3	33	9%
	TLC	2	1	4	1	2	0	4	5	1	2	0	2	2	24	7%
	Other	7	5	3	1	6	7	1	4	3	2	2	1	4	42	12%

* Not every incident is a major incident. This counts only those major incidents that required extensive investigations from the risk manager.

Performance Related Information for Staff & Managers

6. Demographic Information of Individuals in Care

Data Source: Avatar

Updated as of 08/10/12

Category	Sub-group	Aug-11	Sep-11	Oct-11	Nov-11	Dec-11	Jan-12	Feb-12	Mar-12	Apr-12	May-12	Jun-12	Jul-12	Monthly Average	Percent*
Total Active (on Roll) at End of Month*		286	290	285	278	283	264	271	270	265	273	282	283	278	
Gender	Female	68	69	64	60	63	60	68	71	66	71	73	70	67	24.1%
	Male	218	221	221	218	220	204	203	199	199	202	209	213	211	75.9%
Age	Median Age (Years)	54 yrs	55 yrs	55 yrs	55 yrs	54 yrs	55 yrs	55 yrs	55 yrs	55 yrs	55 yrs	55 yrs	55 yrs	55 yrs	
	<30 years old	18	24	24	27	20	13	14	20	17	20	23	23	20	7.3%
	>=30 and <40 years old	27	21	21	20	28	29	33	33	28	36	37	33	29	10.4%
	>=40 and <50 years old	53	52	53	48	51	45	46	42	41	42	45	46	47	16.9%
	>=50 and <60 years old	108	107	106	103	102	95	96	96	99	93	92	94	99	35.8%
	>=60 years old	80	86	81	80	81	82	82	79	80	82	85	87	82	29.6%
Legal Status of Individuals on Roll at End of Month	Emergency	20	15	16	16	19	19	25	19	16	17	20	21	19	6.7%
	Inpatient Commitment	32	31	32	27	27	27	27	27	25	25	26	27	28	10.0%
	Outpatient Commitment	26	28	22	24	27	22	22	25	29	28	25	20	25	8.9%
	Voluntary	38	41	40	39	39	42	41	42	41	42	41	43	41	14.7%
	Non-Protesting	1	0	0	0	0	0	0	0	0	0	0	0	0	0.0%
	Civil Sub-total	117	115	110	106	112	110	115	113	111	112	112	111	112	40.4%
	DC Exam	54	61	61	60	63	49	50	50	45	49	57	59	55	19.8%
	Mentally Incompetent	4	3	3	3	2	3	2	4	6	7	8	8	4	1.6%
	NGBRI - DC	95	94	95	93	91	88	89	89	89	89	91	92	91	32.9%
	NGBRI - US	11	12	11	11	10	10	11	10	10	10	10	9	10	3.8%
NGBRI - VI	1	1	1	1	1	1	1	1	1	1	1	1	1	0.4%	
Dual Commitment	1	1	1	1	1	1	1	1	1	3	1	1	1	0.4%	
Sexual Psychopath (Miller Act)	3	3	3	3	3	2	2	2	2	2	2	2	2	0.9%	
Forensic Sub-total	169	175	175	172	171	154	156	157	154	161	170	172	166	59.6%	
Length of Stay	Median LOS (Days)	856 d	844 d	884 d	915 d	876 d	977 d	950 d	974 d	1042 d	1004 d	922 d	890 d	928 d	
	Average LOS (Days)	3033 d	2978 d	2988 d	3053 d	2977 d	3150 d	3089 d	3088 d	3153 d	3047 d	2971 d	2976 d	3042 d	
	<30 Days	39	39	30	29	33	27	32	32	26	30	32	32	32	11.4%
	>=30 ~ <365 Days	68	72	78	77	79	68	69	66	65	68	76	74	72	25.8%
	>= 1 Year & < 2 Years	25	24	22	20	20	22	21	23	22	24	21	23	22	8.0%
	>= 2 Years & < 5 Years	45	46	46	43	42	39	40	41	44	44	46	47	44	15.7%
	>= 5 Years & < 20 Years	62	61	61	62	63	63	64	63	62	62	62	62	62	22.4%
>= 20 Years	47	48	48	47	46	45	45	45	46	45	45	45	46	16.6%	

* Counts the total number of individuals who are on the hospital roll at end of each month. This number serves as denominator to calculate percentage of each group.