



Government of the District of Columbia
Department of Behavioral Health (DBH)



PRISM
Performance Related Information for Staff and Managers
April 2017
Office of Statistics and Reporting (OSR), 6/6/2017

Table of Contents

1. Admissions to SEH 1
2. Discharges from SEH 1
3. Average Daily Census..... 2
4. Transfers..... 2
5. 30-Day Readmission Rate 2
6. Unusual Incidents 3
7. Patient-Involved Unusual Incidents 3
8. Admissions vs. Patient UI Rate 4
9. Unusual Incidents by Severity 4
10. Selected Types of Incidents 4
11. Physical Assaults by Severity 5
12. Patient Injuries 5
13. Staff Injuries 5
14. Patient and Staff Falls 6
15. Percent of Patients Restrained or Secluded 6
16. Restraint Hours Rate & Seclusion Hours Rate 6
17. Elopements..... 7
18. Reported Medication Variance Events..... 7
19. Reported Adverse Drug Reactions 8
20. Percent of Missing Documentation on Med-Administration..... 8
21. Medication Refusal Rate* 8
22. Number of STAT Events and Individuals Involved 9
23. Percentage of SiteFM Work Orders Completed within 3 Days 9
24. Demographics..... 10
25. Length of Stay 11
Appendix Tables

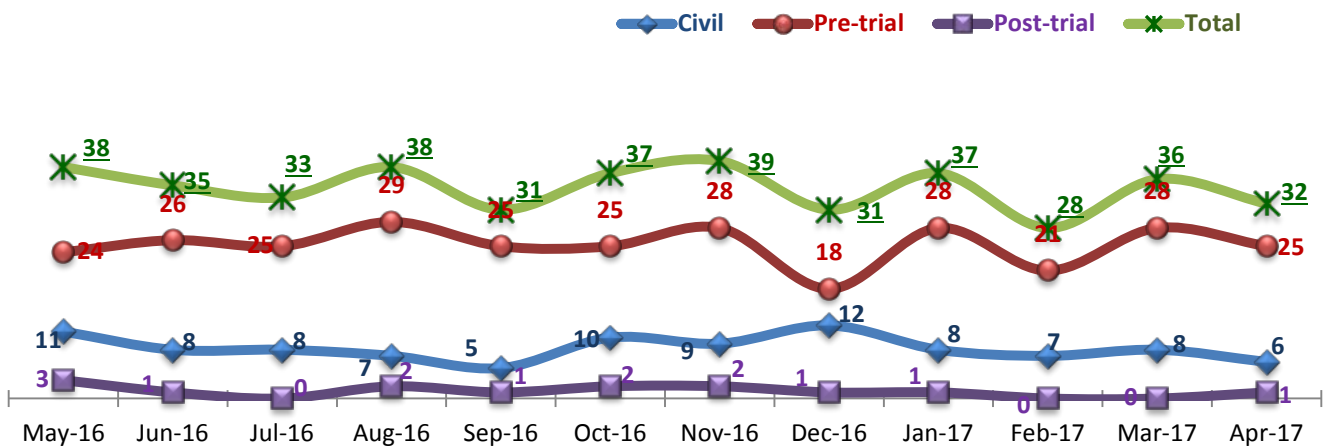
Data Disclaimer

The primary source of data extracted and analyzed herein is Avatar, the Saint Elizabeths Hospital's electronic medical record system. Additional data source includes, but is not limited to, the Hospital's Unusual Incident Database and SiteFM. Data reflects information as entered in each system by users. The Office of Statistics and Reporting (OSR) has made reasonable efforts to ensure that data and its accompanying information are as accurate and up-to-date as possible at the time of analysis and publication but does not guarantee the accuracy, reliability, or completeness of data. The OSR is not liable for any misinterpretation or misuse of the data. Use of any information from PRISM must be fully acknowledged and/or cited. Use of PRISM data for anything other than patient care determinations or management of the services provided within the hospital (including external publications, research papers, presentations, etc.) is prohibited without written permission from the Chief Quality and Data Manager Officer at the Saint Elizabeths Hospital.

Key Trends: Admissions, Discharges, Transfers, Census, and Readmissions (1~5)

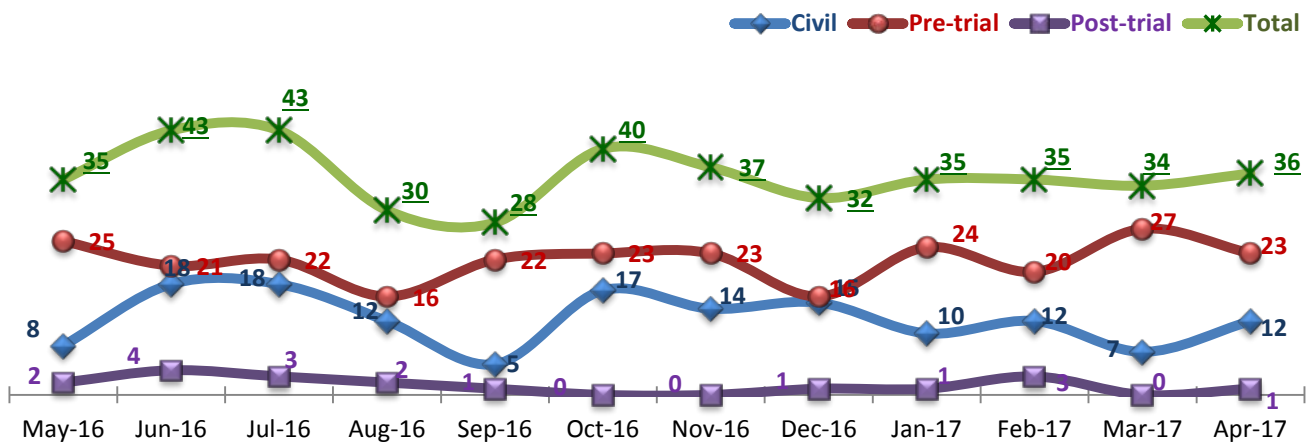
- From month-to-month, over the last 8 consecutive months, as admissions increased, discharges decreased and vice versa.
- The number of pre-trial admissions accounted for over 78% of all admissions in April and over 76% over the last 4 months (since January 2017).
- On average, when compared to this time last year, the Hospital’s Average Daily Census (ADC) has declined by 4%. The decrease from 272 patients in April 2016 to 265 in April 2017 started to drop sharply in July 2016 but then rebounded and levelled off over the next few months before settling in January 2017.
- Six of the ten Emergency Medical leaves left and return on the same day while 2 were out for a week or more .
- Of the 7 discharges occurring in March, 2 were readmitted within the ensuing 30 day period.

1. Admissions to SEH



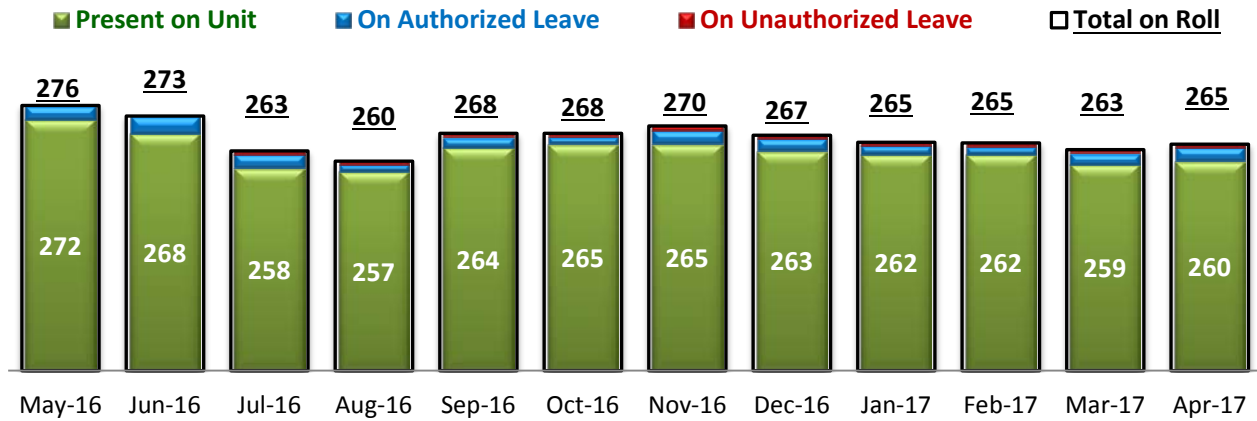
* Number of admissions to SEH inpatient program, including transfers from forensic outpatient to inpatient program.

2. Discharges from SEH



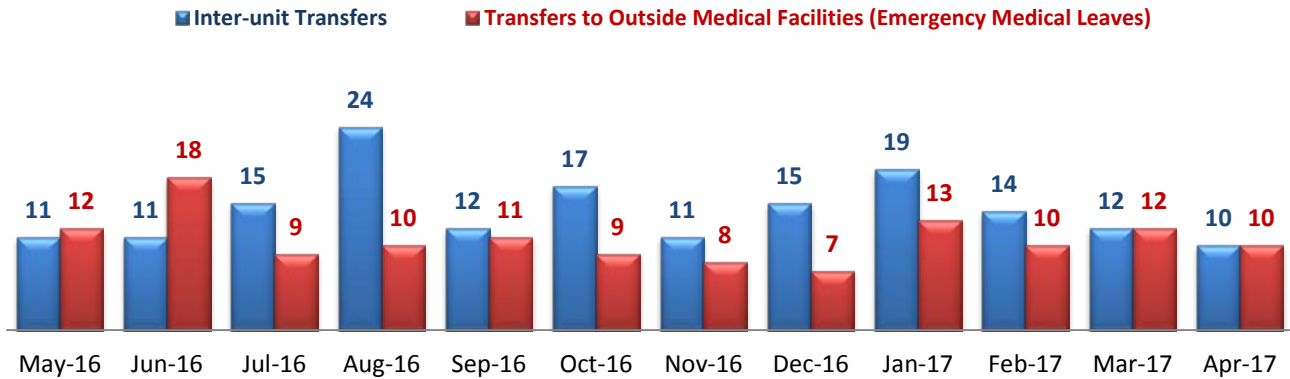
* Number of discharges from SEH inpatient program, including transfers from inpatient to forensic outpatient program.

3. Average Daily Census



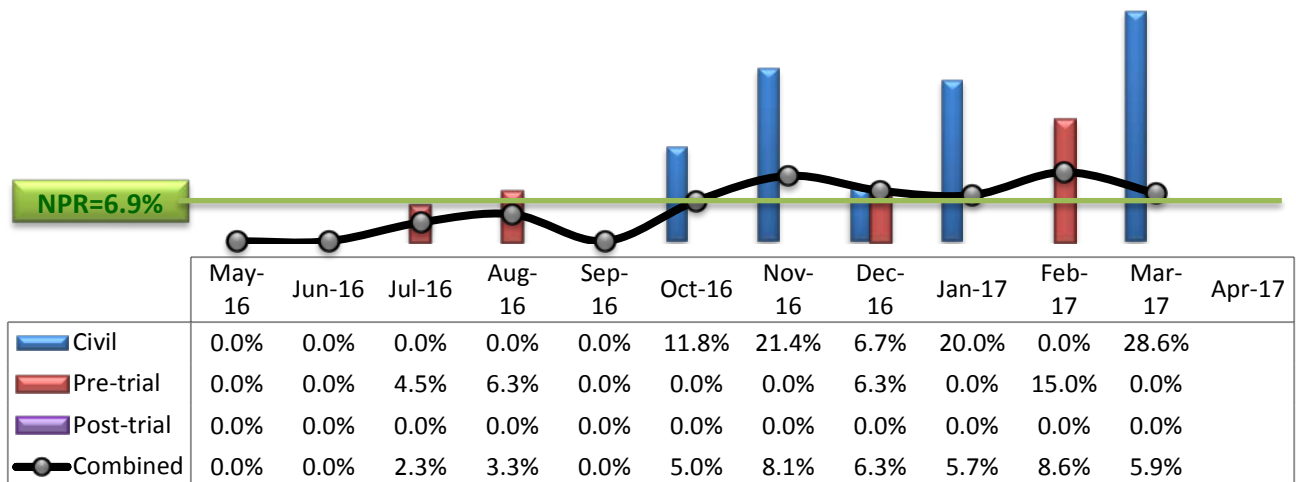
* Data above is the daily average number of individuals counted at 11:59 PM every day during each month.

4. Transfers



* Number of inter-unit transfers that occurred during month and number of emergency medical leaves that were initiated during month.

5. 30-Day Readmission Rate



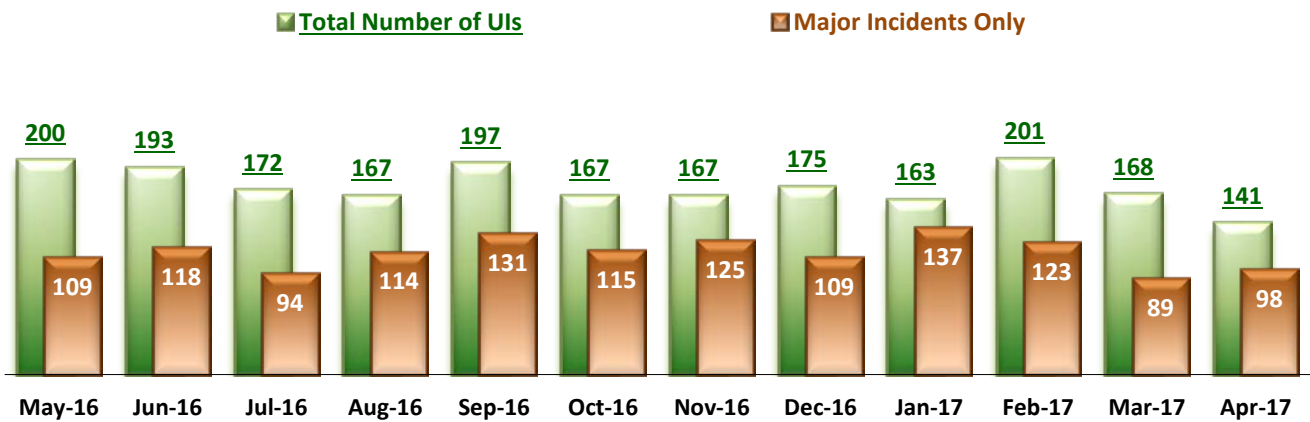
* Percent of discharges that returned to SEH within 30 days of discharges. It does not include those who may have been re-hospitalized at another psychiatric facility. This measure requires 30-day observation following discharge.

** The post-trial denominators (discharges) per month range only between one and six, making the monthly re-admission rate high when there is any. For example, in December 2014, there was only one post-trial discharge, which was readmitted within 30 days. Thus, the 30-day readmission rate for post-trial discharge at that time was 100%.

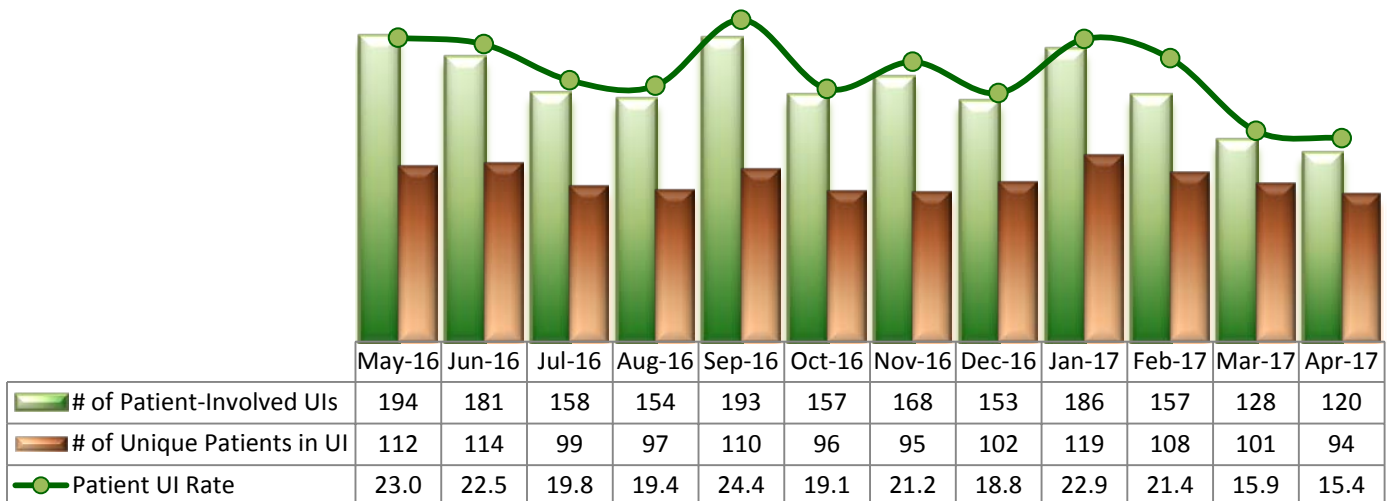
Key Trends: Unusual Incidents (6~17)

- April recorded the fewest number of Unusual Incidents (UIs) since the first official publication of the PRISM Report in 2012. The 98 major UIs account for almost 70% of the total 141 incidents.
- Despite a 16% reduction in the number of UIs from last month, the patient UI rate only decreased from 15.9 to 15.4, a 2.5% reduction. In comparison to the same time last year, the patient UI rate has decrease almost 35%.
- The top five occurring categories of UIs in April were: Aggressive Behavior (54), Emergency Involuntary Medications, Psychiatric Emergencies (48), Physical Assaults (35), Seclusions (27). Many of these categories are co-occurring.
- The patient injury rate has been below the National Published Rate (NPR) for 7 consecutive months and has never surpassed it at any time.
- After recording only 1 staff fall in the first quarter of 2017, the month of April only has doubled that amount for the 2nd quarter.
- Patients continue to be restrained and secluded at a rate that is above the national average. The rate of seclusion is almost 3 times greater than the NPR while the rate of restraint is nearly 18% higher. However, the number of hours that patients are restrained or secluded is far below the NPR.

6. Unusual Incidents

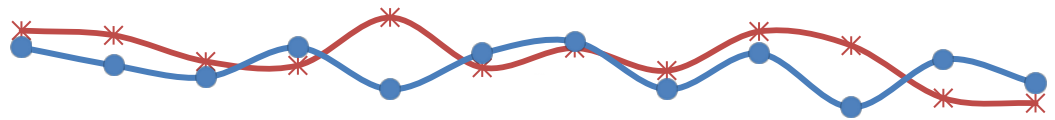


7. Patient-Involved Unusual Incidents



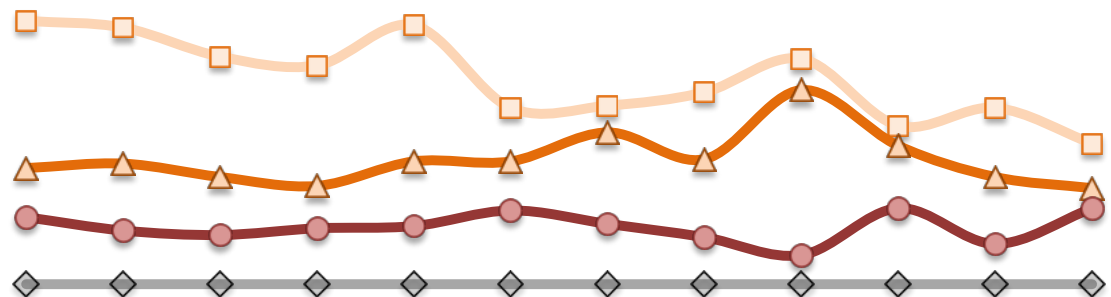
* The patient UI rate is the number of patient-involved unusual incidents reported for every 1000 inpatient days.

8. Admissions vs. Patient UI Rate



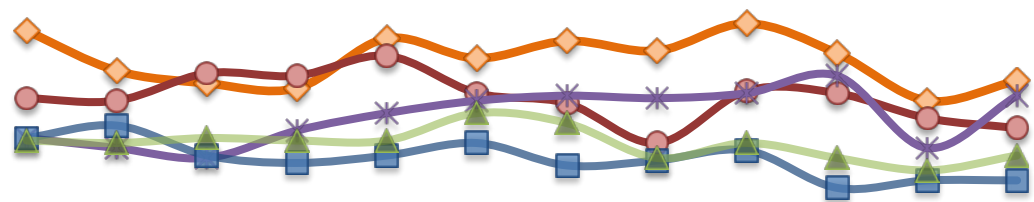
	May-16	Jun-16	Jul-16	Aug-16	Sep-16	Oct-16	Nov-16	Dec-16	Jan-17	Feb-17	Mar-17	Apr-17
✱ Patient UI Rate	23.0	22.5	19.8	19.4	24.4	19.1	21.2	18.8	22.9	21.4	15.9	15.4
● Admission	38	35	33	38	31	37	39	31	37	28	36	32

9. Unusual Incidents by Severity



	May-16	Jun-16	Jul-16	Aug-16	Sep-16	Oct-16	Nov-16	Dec-16	Jan-17	Feb-17	Mar-17	Apr-17
□ 1) Low	118	115	102	98	116	79	80	86	101	71	79	63
△ 2) Medium	52	54	48	44	55	55	68	56	87	62	48	43
● 3) High	30	24	22	25	26	33	27	21	13	34	18	34
◇ 4) Catstrp	0	0	0	0	0	0	0	0	0	0	0	0
Total UI	200	193	172	167	197	167	175	163	201	168	145	140

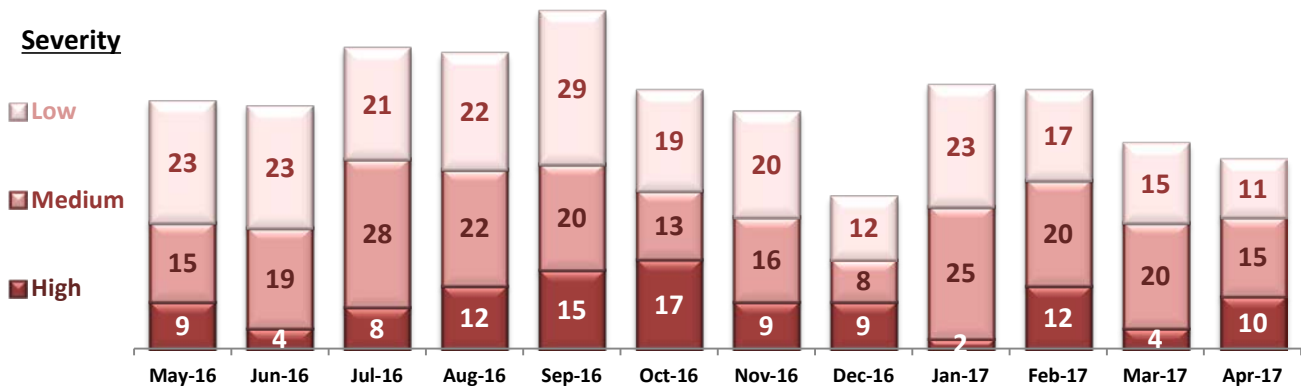
10. Selected Types of Incidents



	May-16	Jun-16	Jul-16	Aug-16	Sep-16	Oct-16	Nov-16	Dec-16	Jan-17	Feb-17	Mar-17	Apr-17
◇ Aggressive Behavior	74	58	53	51	71	63	70	66	77	65	46	54
● Physical Assault	47	46	57	56	64	49	45	29	50	49	39	35
✱ Pysch Emerg.	31	27	23	34	41	46	48	47	49	56	27	48
■ Fall	31	36	24	21	24	29	20	22	26	11	14	14
▲ Injury	30	29	31	30	30	41	37	23	29	23	18	24

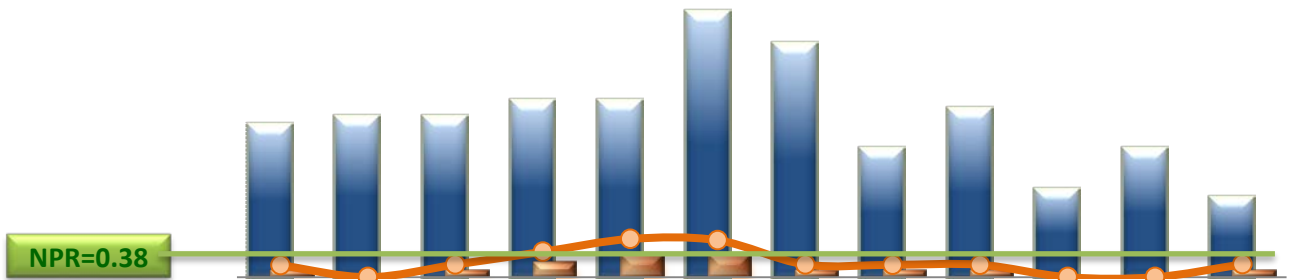
* These are incident types that are frequently reported. Some incidents may be counted in multiple categories. For example, a physical assault incident that accompanied psychiatric emergency and injury is counted under psychiatric emergency and injury as well as under physical assault. Injury is broadly defined to include any type of injury, regardless of the cause or severity level.

11. Physical Assaults by Severity



* Any physical assault that accompanies a code 13 or results in extensive injury needing off-unit treatment or transfer to ER is considered to be high severity; any physical assault that causes a minor injury that can be treated on unit is considered to be medium severity; and physical assault events that result in no injury are considered to be low severity.

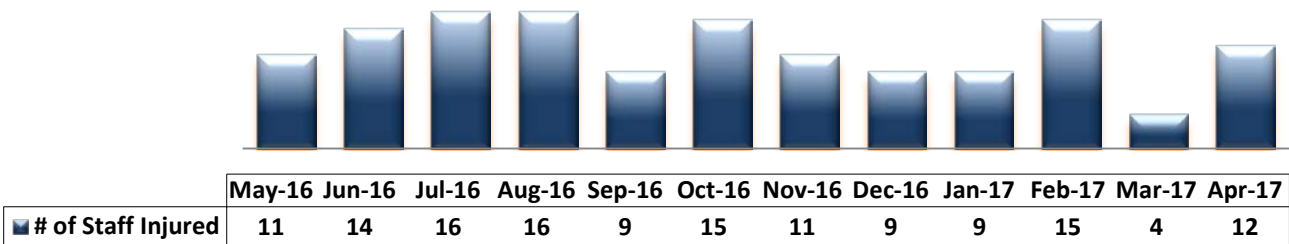
12. Patient Injuries



	May-16	Jun-16	Jul-16	Aug-16	Sep-16	Oct-16	Nov-16	Dec-16	Jan-17	Feb-17	Mar-17	Apr-17
Total Pts Injured	19	20	20	22	22	33	29	16	21	11	16	10
Major Pt Injuries*	1	0	1	2	3	3	1	1	1	0	0	1
Patient Injury Rate	0.12	0.00	0.13	0.25	0.38	0.37	0.13	0.12	0.12	0.00	0.00	0.13

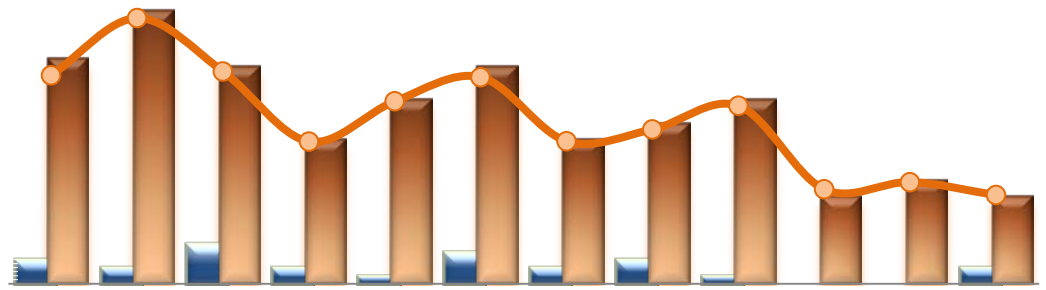
* Injury is broadly defined to include any type of injuries regardless of the cause or severity level. The total number of patients injured represents all of the reported injuries including minor injuries treated with first aid alone. However, the patient injury rate considers only the number of patient injuries that are required beyond first-aid level treatment based on the NRI definition and the patient injury rate is the number of 'major' patient injuries per every 1000 inpatient days

13. Staff Injuries



* Injury is broadly defined to include any type of injuries regardless of the cause or severity level. The total number of staff injured represents all of the reported staff injuries including minor injuries treated with first aid alone.

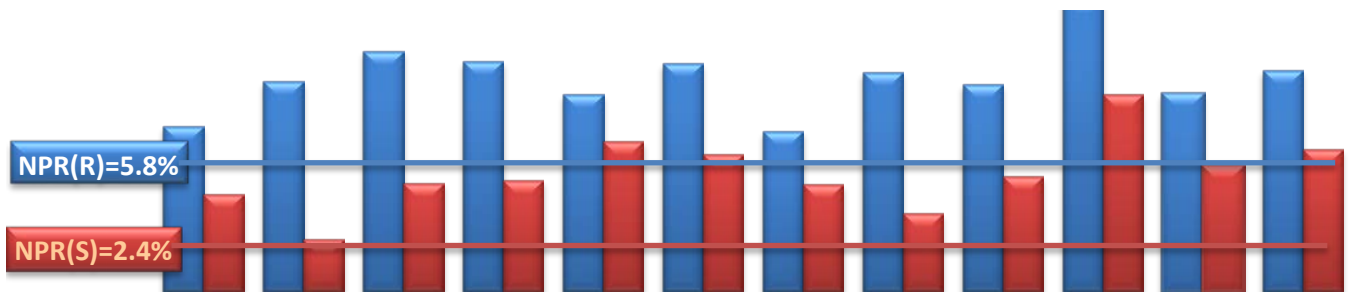
14. Patient and Staff Falls



	May-16	Jun-16	Jul-16	Aug-16	Sep-16	Oct-16	Nov-16	Dec-16	Jan-17	Feb-17	Mar-17	Apr-17
Total Staff who Fell	3	2	5	2	1	4	2	3	1	0	0	2
Total Patients who Fell	28	34	27	18	23	27	18	20	23	11	13	11
Patient Fall Rate	3.32	4.23	3.38	2.26	2.90	3.29	2.27	2.46	2.83	1.50	1.62	1.41

* The patient fall rate is the number of patient falls per every 1000 inpatient days.

15. Percent of Patients Restrained or Secluded



	May-16	Jun-16	Jul-16	Aug-16	Sep-16	Oct-16	Nov-16	Dec-16	Jan-17	Feb-17	Mar-17	Apr-17
Restraint	7.1%	9.0%	10.3%	9.8%	8.4%	9.8%	6.9%	9.4%	8.9%	12.5%	8.4%	9.5%
Seclusion	4.2%	2.2%	4.7%	4.7%	6.4%	5.9%	4.6%	3.3%	4.9%	8.4%	5.4%	6.1%

* Percent of unique patients who were restrained at least once and percent of unique patients who were secluded at least once. The denominator includes all individuals who were served in care 1+ day during month.

16. Restraint Hours Rate & Seclusion Hours Rate

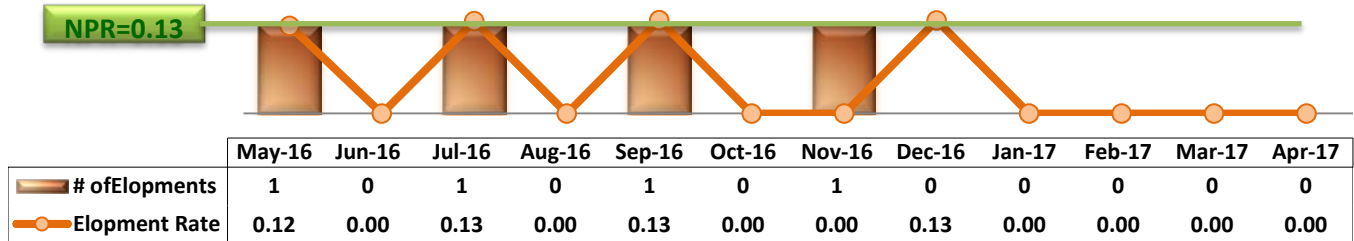


	May-16	Jun-16	Jul-16	Aug-16	Sep-16	Oct-16	Nov-16	Dec-16	Jan-17	Feb-17	Mar-17	Apr-17
Restraint	0.104	0.218	0.154	0.100	0.164	0.162	0.209	0.191	0.147	0.376	0.087	0.254
Seclusion	0.137	0.078	0.125	0.121	0.195	0.108	0.214	0.123	0.182	0.252	0.096	0.148

* Restraint/Seclusion Hours Rate: Number of hours spent in restraint/seclusion for every 1000 inpatient hours.

** The duration of each physical hold event is counted as 1 minute as a physical hold is ordered and used only as a temporary intervention that lasts less than a minute to break up any physical conflicts or to administer emergency medications.

17. Elopements

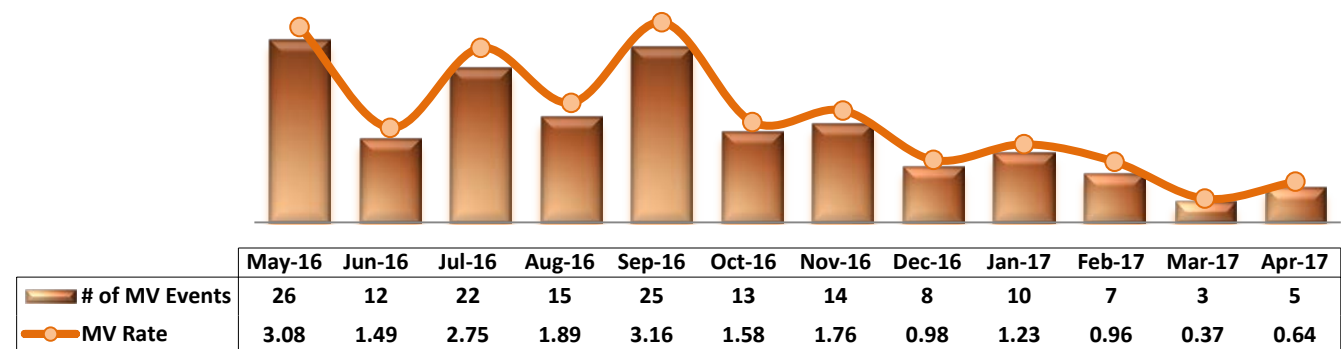


* Data herein counts the number of unauthorized leaves for any duration that were initiated during month and were recorded in Avatar. The elopement rate is the number of those unauthorized leaves that occurred for every 1000 inpatient days.

Key Trends: Medication Documentation, MV, ADR, and STAT (18~22)

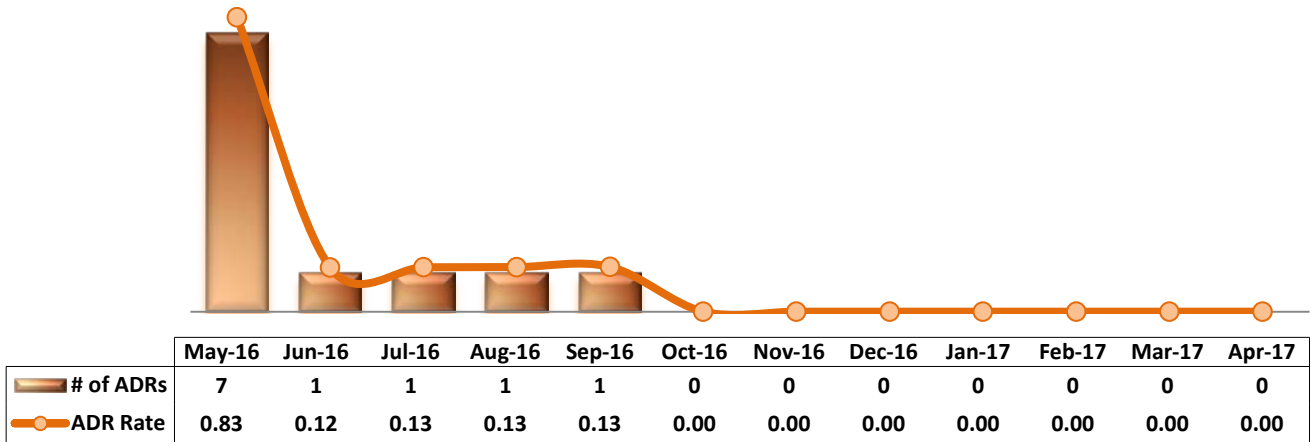
- The Medication Variance (MV) rate reached its lowest point in March and continues to be historically low as there were only 5 MVs in April.
- There have been no reported Adverse Drug Reactions since September 2016 and only 11 in the last 12 months.
- Over 98,000 medication administrations occurred in April, affecting 296 individuals. Of those, 5,935 doses were refused.
- Approximately nine percent of the patient census for April had one or more STAT events. Fewer than 2 percent had 3 or more STAT events.

18. Reported Medication Variance Events



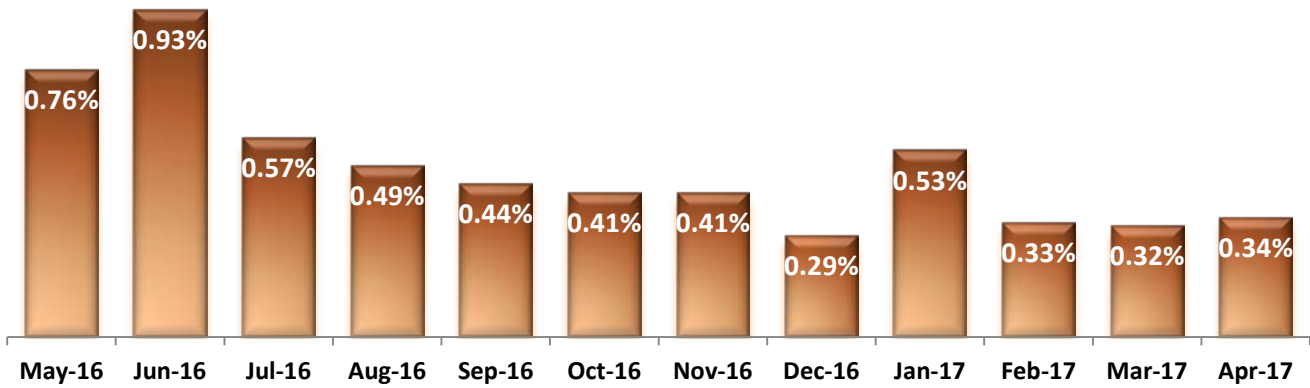
* MV Rate: Number of reported medication variance events that occurred for every 1000 inpatient days.

19. Reported Adverse Drug Reactions

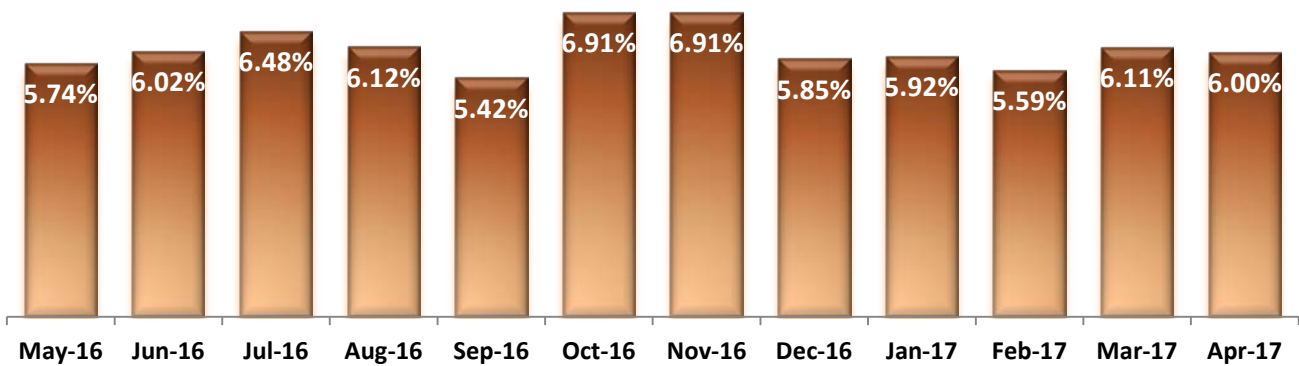


* ADR Rate: Number of reported adverse drug reaction events that occurred for every 1000 inpatient days.

20. Percent of Missing Documentation on Med-Administration

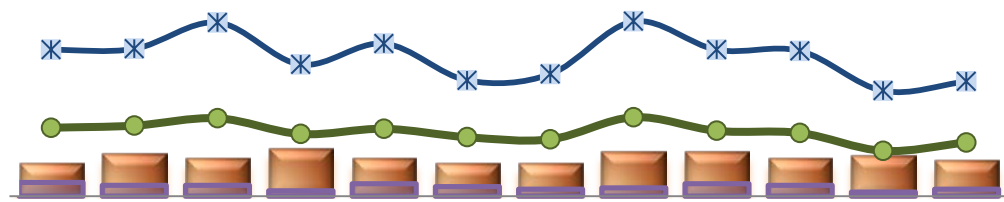


21. Medication Refusal Rate*



* Medication Refusal Rate: the number of refused medication doses divided by the total number of doses scheduled for administration.

22. Number of STAT Events and Individuals Involved

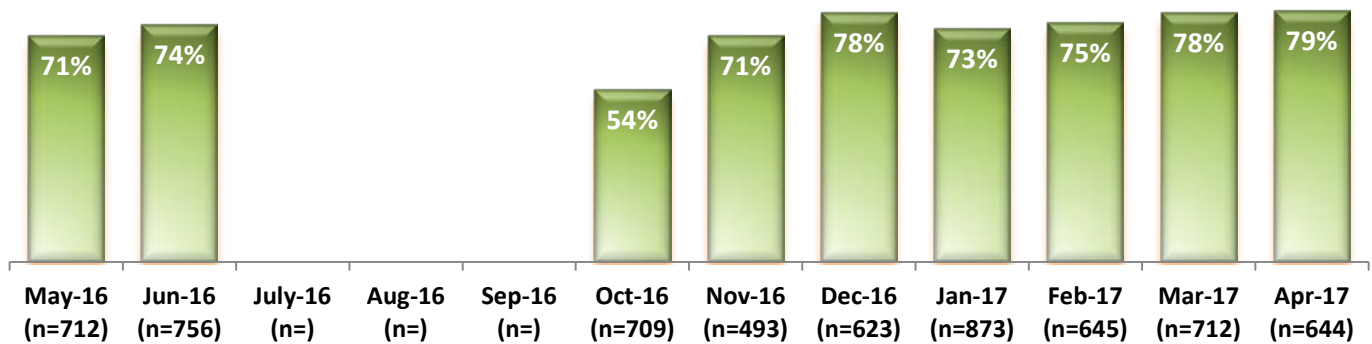


	May-16	Jun-16	Jul-16	Aug-16	Sep-16	Oct-16	Nov-16	Dec-16	Jan-17	Feb-17	Mar-17	Apr-17
IICs w/ >=1 STAT	24	31	28	35	28	24	24	33	33	28	30	26
IICs w/ >=3 STAT Events	10	8	8	4	9	7	5	6	9	8	3	5
Total STAT Events	65	67	74	59	64	56	54	75	62	60	43	51
Total STAT Orders	139	140	165	125	145	110	116	166	139	138	100	109

Key Trends: Environment of Care (23)

- There has been continuous improvement in the number of SiteFM work orders completed within 3 days. In the last 3 months, the percentage had increase from 73% to 79% with varying amounts of orders submitted each month.
- The average amount of work orders completed within 3 days over the last 12 months is 72%.

23. Percentage of SiteFM Work Orders Completed within 3 Days



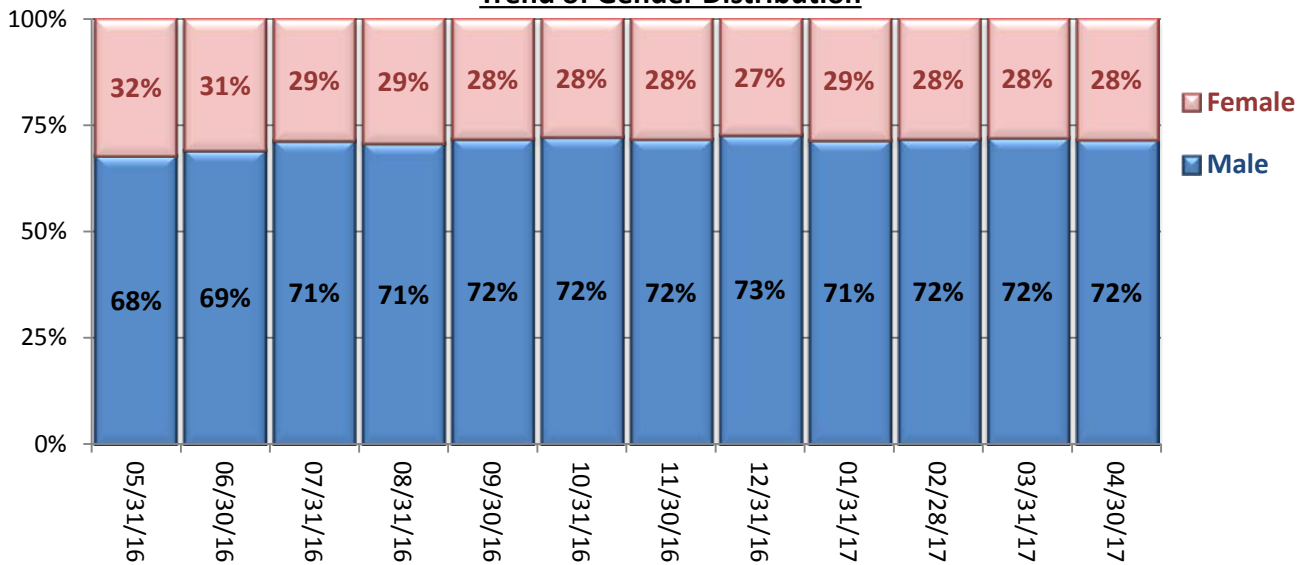
*Data for July'16~Sep'16 is unavailable due to a technical issue with the SiteFM database

Key Trends: Demographics, Legal Status, and Length of Stay (24-25)

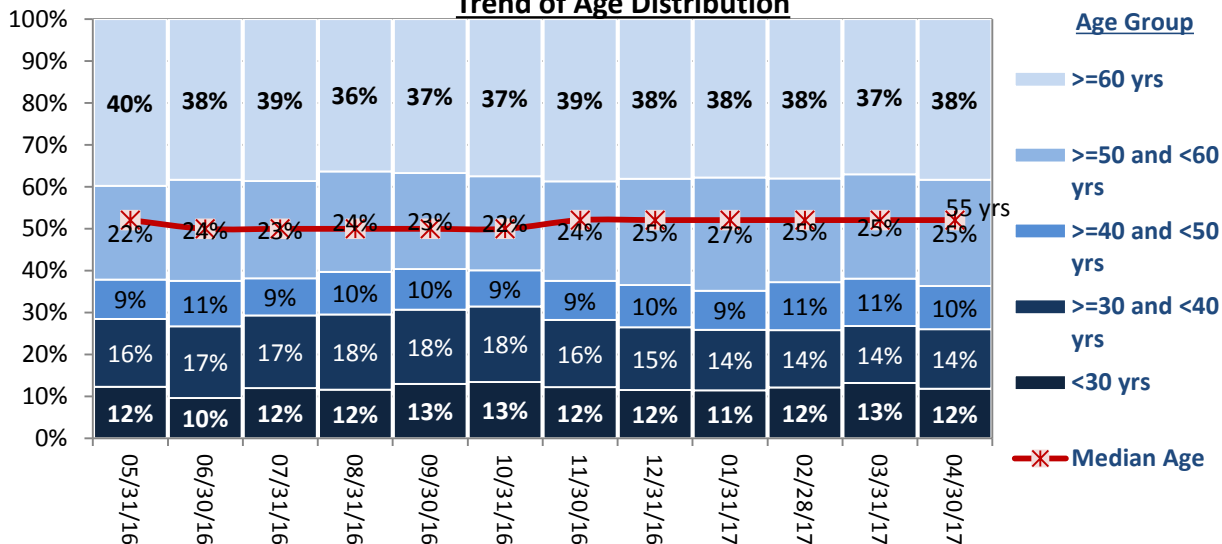
- Of patients remaining at the Hospital on April 30th, 2017, 63% were 50+ years of age. The proportion of individuals 50+ years of age has never been below 61%.
- On a monthly basis, there has been an average of 90% of individuals with a pre-trial legal status at the Hospital over the last 12 months.
- In the Civil population, there has been a shift from the 'Voluntary' legal status category towards the 'Inpatient' category in the last year. In May 2016, there were 39 individuals with a status of Voluntary and 34 defined as Inpatient. In April 2017, there are 38 defined as Inpatient while 25 have a status of Voluntary.
- In general, the number of individuals that remain at the Hospital between 30-364 days has been increasing while those that stay between 365 days to 2 years are decreasing.
- The average Length of Stay (LOS) of the pre-trial individuals surpassed 180 days (6 months) for the first time. The average LOS for those discharged in April is 265 days (about 9 months).

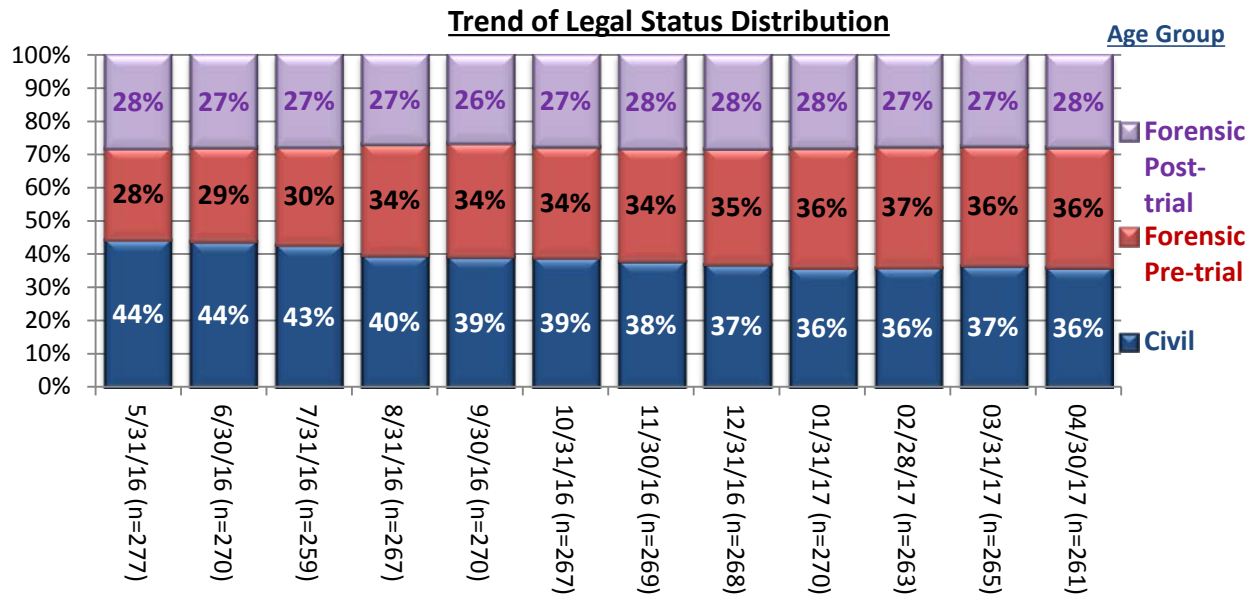
24. Demographics

Trend of Gender Distribution

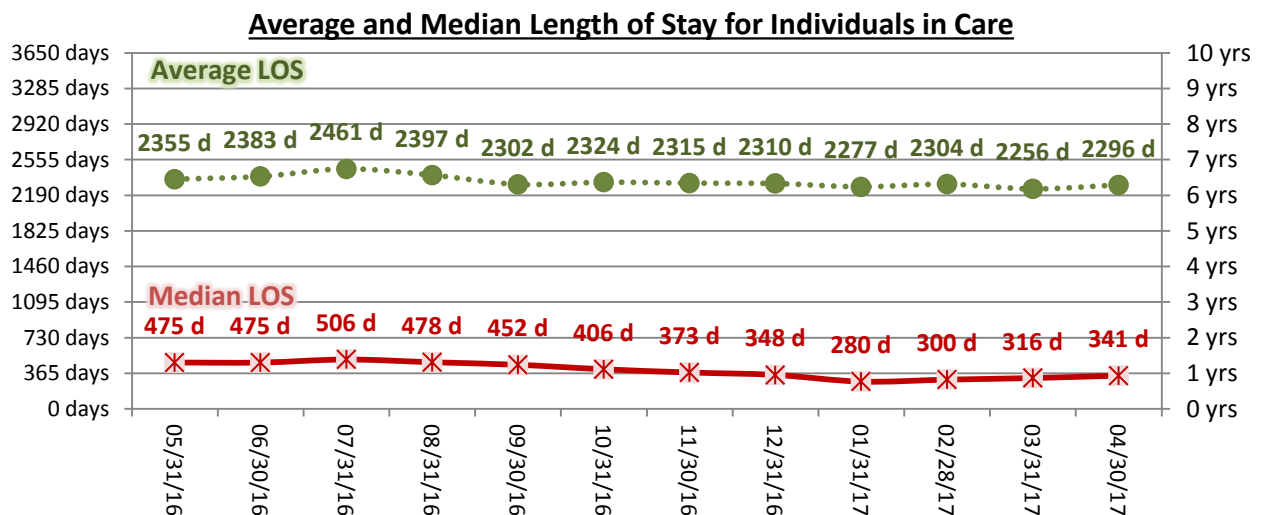
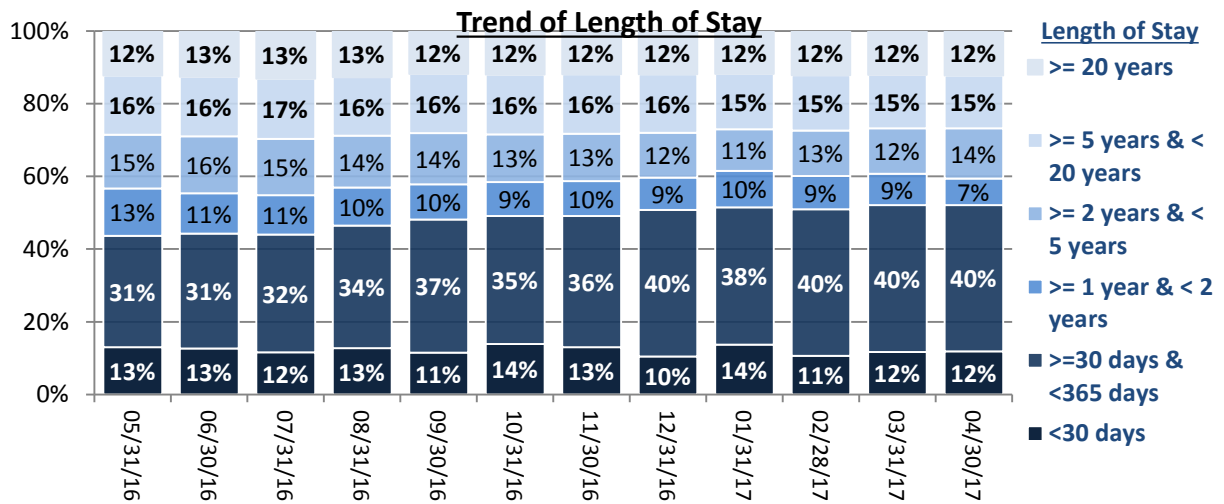


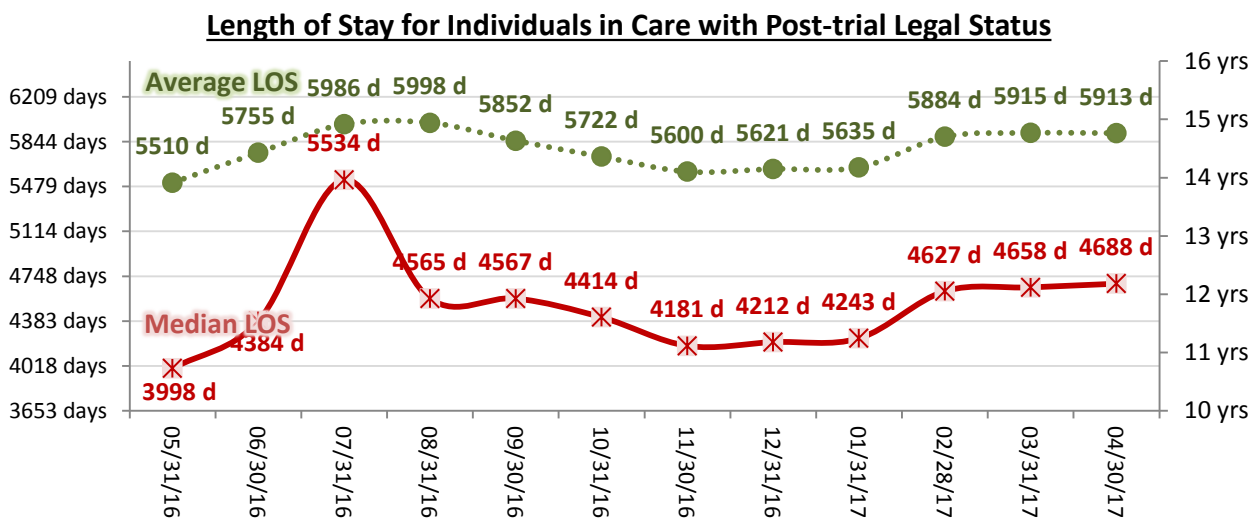
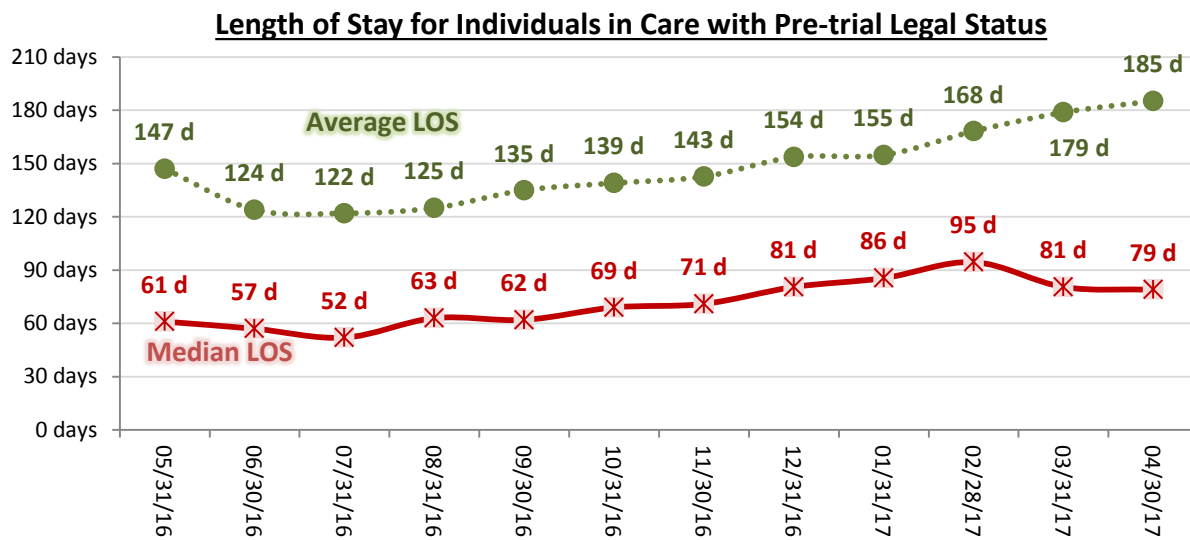
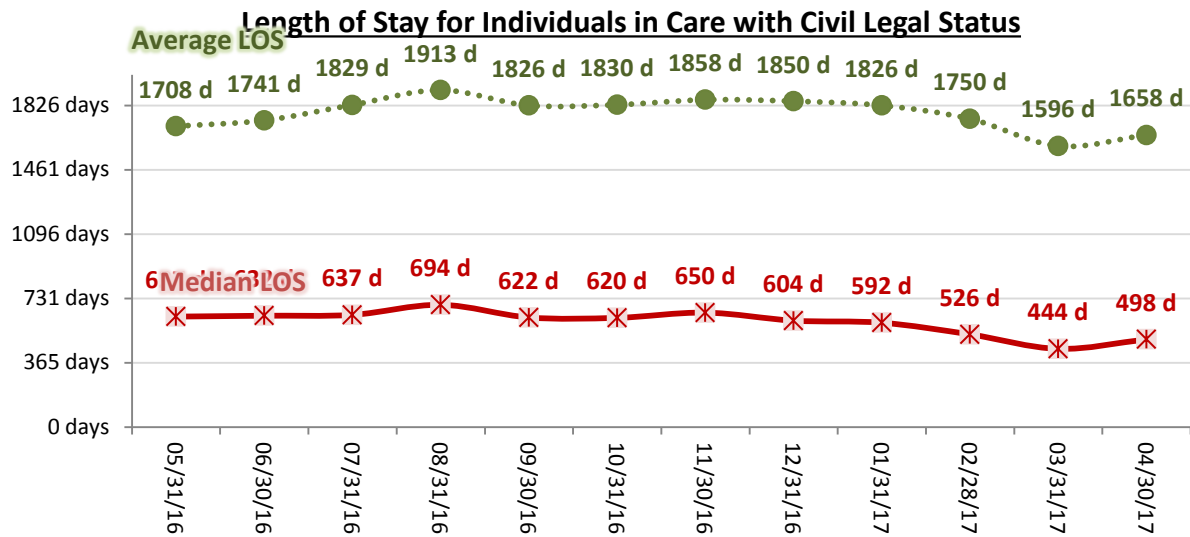
Trend of Age Distribution





25. Length of Stay





Performance Related Information for Staff & Managers

1. Census, Admissions, Discharges & Transfers

Data Source: Avatar

Updated as of 05/25/17

Category	May-16	Jun-16	Jul-16	Aug-16	Sep-16	Oct-16	Nov-16	Dec-16	Jan-17	Feb-17	Mar-17	Apr-17	Monthly Average	Total (12mths)	Figure	
Admissions	Civil	11	8	8	7	5	10	9	12	8	7	8	6	8	99	Figure 1
	Pre-trial	24	26	25	29	25	25	28	18	28	21	28	25	25	302	
	Post-trial	3	1	0	2	1	2	2	1	1	0	0	1	1	14	
	Total	38	35	33	38	31	37	39	31	37	28	36	32	35	415	
Discharges	Civil	8	18	18	12	5	17	14	15	10	12	7	12	12	148	Figure 2
	Pre-trial	25	21	22	16	22	23	23	16	24	20	27	23	22	262	
	Post-trial	2	4	3	2	1	0	0	1	1	3	0	1	2	18	
	Total	35	43	43	30	28	40	37	32	35	35	34	36	36	428	
Net Increase During Month	Civil	3	-10	-10	-5	0	-7	-5	-3	-2	-5	1	-6		-49	
	Pre-trial	-1	5	3	13	3	2	5	2	4	1	1	2		40	
	Post-trial	1	-3	-3	0	0	2	2	0	0	-3	0	0		-4	
	Total	3	-8	-10	8	3	-3	2	-1	2	-7	2	-4		-13	
All Individuals on Roll at End of Month	277	270	259	267	270	267	269	268	270	263	265	261	267			
a. Present on Unit	274	265	258	263	264	264	264	263	265	259	260	259	263			
b. On AL	3	5	0	3	5	2	4	4	4	3	4	1	3			
c. On UL	0	0	1	1	1	1	1	1	1	1	1	1	1			
All Individuals on Roll: Daily Average during Month*	276	273	263	260	268	268	270	267	265	265	263	265	267			
a. Present on Unit	272	268	258	257	264	265	265	263	262	262	259	260	263		Figure 3	
b. On AL	4	5	4	2	3	2	4	3	2	2	3	4	3.8			
c. On UL	0	0	1	1	1	1	1	1	1	1	1	1	0.85			
Patient Days**	8437	8043	7994	7956	7923	8212	7936	8139	8121	7325	8034	7795	7993	95915		
Inter-Unit Transfers during Month	11	11	15	24	12	17	11	15	19	14	12		15	161	Figure 4	
Medical Leaves Initiated during Month	Emergency	12	18	9	10	11	9	8	7	13	10	12	10	11	129	Figure 4
	Non-Emer	46	72	42	58	65	61	54	52	53	34	32	38	51	607	
	Total	58	90	51	68	76	70	62	59	66	44	44	48	61	736	
Non-Medical Leaves Initiated during Month	284	287	214	182	234	234	216	208	157	166	200	193	215	2575		
UL Initiated during Month	1	0	2	0	1	1	1	0	0	1	1	0	1	8		
Total Unique Patients Served during Month	312	312	301	295	296	307	306	299	305	296	296	296	302	628		
30 Day Readmission***	Civil	0	0	0	0	0	2	3	1	2	0	2		1	10	
	Pre-trial	0	0	1	1	0	0	0	1	0	3	0		1	6	
	Post-trial	0	0	0	0	0	0	0	0	0	0	0		0	0	
	Total	0	0	1	1	0	2	3	2	2	3	2		1	16	

* This is the average number of individuals served on a given day for the respective month. Due to rounding from average calculation, numbers from its subcategories a, b, & c may not add up to the total number on this row.

** It counts the number of patients who are present on the unit and excludes those on authorized or unauthorized leave at 11:59pm on a given day.

*** Number of patients returning within 30 days of discharges that occurred during month.

Performance Related Information for Staff & Managers

2. Key Performance Indicators

Data Source: UI DB, MV DB, ADR DB, Restraint/Seclusion Log, and Avatar

Updated as of 11/04/16

Category	May-16	Jun-16	Jul-16	Aug-16	Sep-16	Oct-16	Nov-16	Dec-16	Jan-17	Feb-17	Mar-17	Apr-17	Monthly Average	NPR* (Jun-13)	Figure
30 Day Readmit (Discharge Cohort)**	Civil	0.0%	0.0%	0.0%	0.0%	0.0%	11.8%	21.4%	6.7%	20.0%	0.0%	28.6%	7.4%		Figure 5
	Pre-trial	0.0%	0.0%	4.5%	6.3%	0.0%	0.0%	0.0%	6.3%	0.0%	15.0%	0.0%	2.5%		
	Post-trial	0.0%	0.0%	0.0%	0.0%	0.0%	#DIV/0!	#DIV/0!	0.0%	0.0%	0.0%	#DIV/0!	0.0%		
	Combined	0.0%	0.0%	2.3%	3.3%	0.0%	5.0%	8.1%	6.3%	5.7%	8.6%	5.9%	4.1%	6.9%	
Number of Unusual Incidents*	200	193	172	167	197	167	175	163	201	168	145	140	174		Figure 6
Patient Unusual Incident Rate	23.0	22.5	19.8	19.4	24.4	19.1	21.2	18.8	22.9	21.4	15.9	15.4	20.3		Figure 7
UI by Severity	Catastrophe	0	0	0	0	0	0	0	0	0	0	0	0		Figure 9
	High	30	24	22	25	26	33	27	21	13	34	18	34	26	
	Medium	52	54	48	44	55	55	68	56	87	62	48	43	56	
	Low	118	115	102	98	116	79	80	86	101	71	79	63	92	
Physical Assault Incident Rate	5.6	5.7	7.1	7.0	8.1	6.0	5.7	3.6	6.2	6.7	4.9	4.5	5.9		
Selected Types of Incidents	Physical Assault	47	46	57	56	64	49	45	29	50	49	39	35	47	Figure 10
	Aggressive Behav.	74	58	53	51	71	63	70	66	77	65	46	54	62	
	Psych Emergency	31	27	23	34	41	46	48	47	49	56	27	48	40	
	Fall	31	36	24	21	24	29	20	22	26	11	14	14	23	
	Injury	30	29	31	30	30	41	37	23	29	23	18	24	29	
Physical Assaults by Severity	High	9	4	8	12	15	17	9	9	2	12	4	10	13	Figure 11
	Medium	15	19	28	22	20	13	16	8	25	20	20	14	18	
	Low	23	23	21	22	29	19	20	12	23	17	15	11	20	
Patient Injury Rate***	0.12	0.00	0.13	0.25	0.38	0.37	0.13	0.12	0.12	0.00	0.00	0.13	0.15	0.38	Figure 12
Patients with Major Injuries***	1	0	1	2	3	3	1	1	1	0	0	1	1		
Total Patients Injured***	19	20	20	22	22	33	29	16	21	11	16	10	20		
Total Staff Injured***	11	14	16	16	9	15	11	9	9	15	4	12	12		Figure 13
Patient Fall Rate	3.32	4.23	3.38	2.26	2.90	3.29	2.27	2.46	2.83	1.50	1.62	1.41	2.64		Figure 14
Total Patients who Fell	28	34	27	18	23	27	18	20	23	11	13	11	21		
Total Staff who Fell	3	2	5	2	1	4	2	3	1	0	0	2	2		
Percent of Patients Restrained	7.1%	9.0%	10.3%	9.8%	8.4%	9.8%	6.9%	9.4%	8.9%	12.5%	8.4%	9.5%	2.3%	5.8%	Figure 15
Percent of Patients Secluded	4.2%	2.2%	4.7%	4.7%	6.4%	5.9%	4.6%	3.3%	4.9%	8.4%	5.4%	6.1%	5.1%	2.4%	
Restraint Hours Rate	0.104	0.218	0.154	0.100	0.164	0.162	0.209	0.191	0.147	0.376	0.087	0.254	0.179	0.71	Figure 16
Seclusion Hours Rate	0.137	0.078	0.125	0.121	0.195	0.108	0.214	0.123	0.182	0.252	0.096	0.148	0.147	0.44	
Elopement Rate	0.12	0.00	0.13	0.00	0.13	0.00	0.13	0.00	0.00	0.00	0.00	0.00	0.05	0.13	Figure 17
Medication Variance Rate	3.08	1.49	2.75	1.89	3.16	1.58	1.76	0.98	1.23	0.96	0.37	0.64	1.67		Figure 18
Adverse Drug Reaction Rate	0.83	0.12	0.13	0.13	0.13	0.00	0.00	0.00	0.00	0.00	0.00	0.00	0.11		Figure 19
Missing Med-Admin Documentation	0.76%	0.93%	0.57%	0.49%	0.44%	0.41%	0.29%	0.53%	0.33%	0.32%	0.33%	0.34%	0.48%		Figure 20
Percent of Medication Refusal	5.74%	6.02%	6.48%	6.12%	5.42%	6.91%	5.85%	5.92%	5.59%	6.11%	5.92%	6.00%	6.01%		Figure 21
SiteFM Work Orders Completed within 3 days	71%	74%				54%	71%	78%	73%	75%	78%	79%	72%		Figure 23
Total SiteFM Work Orders	505	562				382	349	486	639	483	555	506	496		
	712	756				709	493	623	873	645	712	644	685		

* National Public Rate, NASMHPD Research Institute, National Research Institute (NRI), Data as of June 2013, Published in November 2013.

** Percentage of patients returning within 30 days of discharges that occurred during month

*** Refer to the next page [UI & Medication]

Performance Related Information for Staff & Managers

3. Unusual Incident & Medication

Data Source: UI DB, MV DB, ADR DB, and Avatar

Updated as of 11/04/16

Category	May-16	Jun-16	Jul-16	Aug-16	Sep-16	Oct-16	Nov-16	Dec-16	Jan-17	Feb-17	Mar-17	Apr-17	Monthly Average	Total (12mths)	NPR* (Jun-13)	
Unusual Incidents (excluding MV)**	Total UIs	200	193	172	167	197	167	175	163	201	168	145	140	174	2088	
	Major UIs Only	109	118	94	114	131	115	125	109	137	123	89	97	113	1361	
	Pt Involved UI Only	194	181	158	154	193	157	168	153	186	157	128	120	162	1949	
	Patient UI Rate	23.0	22.5	19.8	19.4	24.4	19.1	21.2	18.8	22.9	21.4	15.9	15.4		20.3	
Unique Pts Involved in UI	112	114	99	97	110	96	95	102	119	108	101	94	104	1247		
Selected Types of Incidents	Physical Assault	47	46	57	56	64	49	45	29	50	49	39	35	47	566	
	Aggressive Behavior	74	58	53	51	71	63	70	66	77	65	46	54	62	748	
	Psych Emergency	31	27	23	34	41	46	48	47	49	56	27	48	40	477	
	Fall	31	36	24	21	24	29	20	22	26	11	14	14	23	272	
	Injury	30	29	31	30	30	41	37	23	29	23	18	24	29	345	
Physical Assault Rate	5.6	5.7	7.1	7.0	8.1	6.0	5.7	3.6	6.2	6.7	4.9	4.5		5.9		
UI by Severity	Catastrophe	0	0	0	0	0	0	0	0	0	0	0	0	0	0	
	High	30	24	22	25	26	33	27	21	13	34	18	34	26	307	
	Medium	52	54	48	44	55	55	68	56	87	62	48	43	56	672	
	Low	118	115	102	98	116	79	80	86	101	71	79	63	92	1108	
Physical Assaults by Severity	High	9	4	8	12	15	9	9	2	12	4	10	13	111		
	Medium	15	19	28	22	20	13	16	8	25	20	14	18	220		
	Low	23	23	21	22	29	19	20	12	23	17	15	11	20	235	
Total Patients who Fell	28	34	27	18	23	27	18	20	23	11	13	11	21	253		
Patient Fall Rate	3.32	4.23	3.38	2.26	2.90	3.29	2.27	2.46	2.83	1.50	1.62	1.41		2.64		
Total Staff who Fell	3	2	5	2	1	4	2	3	1	0	0	2	2	25		
Total Patients Injured***	19	20	20	22	22	33	29	16	21	11	16	10	20	239		
Patients with Major Injuries***	1	0	1	2	3	3	1	1	1	0	0	1	1	14		
Patient Injury Rate***	0.12	0.00	0.13	0.25	0.38	0.37	0.13	0.12	0.12	0.00	0.00	0.13		0.15	0.38	
Total Staff Injured**	11	14	16	16	9	15	11	9	9	15	4	12	12			
Total UIs Documented in Avatar	1	0	1	0	1	0	1	0	0	0	0	0	0	4		
Elopement Rate	0.12	0.00	0.13	0.00	0.13	0.00	0.13	0.00	0.00	0.00	0.00	0.00		0.05	0.13	
Med Variance (MV) Reports**	26	12	22	15	25	13	14	8	10	7	3	5	13	160		
MV Rate	3.08	1.49	2.75	1.89	3.16	1.58	1.76	0.98	1.23	0.96	0.37	0.64		1.67		
Adverse Drug Reactions Reports	7	1	1	1	1	0	0	0	0	0	0	0	1	11		
ADR Rate	0.83	0.12	0.13	0.13	0.13	0.00	0.00	0.00	0.00	0.00	0.00	0.00		0.11		
Total Med Administrations Scheduled	109074	104020	102274	99946	99661	102744	96508	101309	101439	93137	99700	98941		1208753		
Total Missing Documentations	827	967	580	487	434	422	279	538	331	296	330	337		5828		
Percent of Missing Documentation	0.76%	0.93%	0.57%	0.49%	0.44%	0.41%	0.29%	0.53%	0.33%	0.32%	0.33%	0.34%		0.48%		
Total Medication Doses Refused	6260	6263	6625	6119	5400	7098	5642	5995	5672	5691	5900	5935		72600		
Percent of Medication Refusal	5.74%	6.02%	6.48%	6.12%	5.42%	6.91%	5.85%	5.92%	5.59%	6.11%	5.92%	6.00%		6.01%		
Total STAT Orders	139	140	165	125	145	110	116	166	139	138	100	109	133		Figure 22	
Total STAT Events****	65	67	74	59	64	56	54	75	62	60	43	51	61			
Total Patients with 1+ STAT Events	24	31	28	35	28	24	24	33	33	28	30	26	29			
Total Patients with 3+ STAT Events	10	8	8	4	9	7	5	6	9	8	3	5	7			

* National Public Rate, NASMHPD Research Institute, National Research Institute (NRI), Data as of June 2013, Published in November 2013.

** Numbers may change if any additional UI report is made after the data run date from UI database (around the 15th of the following month); According to the revised UI policy as of November 4, 2013, a medication variance (MV) incident became no longer considered to be an unusual incident, and a medication or vital sign refusal incident is not longer an UI as of May 2014. UI data for the past 12 months in this report has been updated to reflect this change and reanalyzed in order to show the UI trend in consistent logic.

*** Injury is broadly defined to include any type of injuries regardless of the cause or severity level. The total number of patients injured represents all of the reported injuries including minor injuries treated with first aid alone. However, the patient injury rate considers only the number of patient injuries that required beyond first-aid level treatment based on the NRI definition and the patient injury rate is the number of 'major' patient injuries per every 1000 inpatient days

**** One STAT event may involve more than one STAT order for the same patient. Any orders placed within 20 minute timeframe are considered to belong to one STAT event. All STAT order counts are from Pharmacy only..no LABS orders,etc...

Performance Related Information for Staff & Managers

4. Restraint & Seclusion

Data Source: Restraint/Seclusion Log and UI DB (for # of total events and patients) and Avatar (for patient days/hours)

Updated as of 11/04/16

Category		May-16	Jun-16	Jul-16	Aug-16	Sep-16	Oct-16	Nov-16	Dec-16	Jan-17	Feb-17	Mar-17	Apr-17	Monthly Average	Total (12mths)	NPR* (Jun-13)
Number of Restraint Events	Mechanical	7	22	21	10	10	17	19	14	11	21	10	20	15.2		
	Physical Hold	28	35	54	45	46	47	44	44	33	49	22	31	39.8		
	Total	35	57	75	55	56	64	63	58	44	70	32	51	55.0		
Number of Unique Patients Restrained	Mechanical	5	10	9	5	4	5	6	6	5	11	8	9	6.9		
	Physical Hold	17	18	22	24	21	25	15	22	22	26	17	19	20.7		
	Total	22	28	31	29	25	30	21	28	27	37	25	28	27.6		
Percentage of Patients Restrained**	Mechanical	1.6%	3.2%	3.0%	1.7%	1.4%	1.6%	2.0%	2.0%	1.6%	3.7%	2.7%	3.0%	2.3%		
	Physical Hold	5.4%	5.8%	7.3%	8.1%	7.1%	8.1%	4.9%	7.4%	7.2%	8.8%	5.7%	6.4%	6.9%		
	Total	7.1%	9.0%	10.3%	9.8%	8.4%	9.8%	6.9%	9.4%	8.9%	12.5%	8.4%	9.5%	9.2%		5.8%
Total Restraint Hours (h:mm)**	Mechanical	17:15	40:01	25:41	16:24	28:58	29:27	36:54	34:20	23:03	63:36	15:37	46:24	31:28	377:40	
	Physical Hold	3:47	2:04	3:47	2:37	2:09	2:28	2:56	3:01	5:41	2:28	1:07	1:09	2:46	33:14	
	Total	21:02	42:05	29:28	19:01	31:07	31:55	39:50	37:21	28:44	66:04	16:44	47:33	34:14	410:54	
Restraint Hours Rate**	Mechanical	0.085	0.207	0.134	0.086	0.152	0.149	0.194	0.176	0.118	0.362	0.081	0.248	0.164	3:56	
	Physical Hold	0.019	0.011	0.020	0.014	0.011	0.013	0.015	0.015	0.029	0.014	0.006	0.006	0.014	0:20	
	Total	0.104	0.218	0.154	0.100	0.164	0.162	0.209	0.191	0.147	0.376	0.087	0.254	0.179	4:17	0.71
Number of Seclusion Events		21	13	20	24	37	28	34	17	29	43	21	28	26.3	315	
Number of Unique Patients Secluded		13	7	14	14	19	18	14	10	15	25	16	18	15.3		
Percentage of Patients Secluded		4.2%	2.2%	4.7%	4.7%	6.4%	5.9%	4.6%	3.3%	4.9%	8.4%	5.4%	6.1%	5.1%		2.4%
Total Seclusion Hours (h:mm)		27:49	15:05	23:55	23:05	37:09	21:15	40:48	24:07	35:25	44:20	18:32	27:44	28:16	339:14	
Seclusion Hours Rate		0.137	0.078	0.125	0.121	0.195	0.108	0.214	0.123	0.182	0.252	0.096	0.148		0.147	0.44

* National Public Rate, NASMHPD Research Institute, National Research Institute (NRI), Data as of June 2013, Published in November 2013.

** Restraint data prior to April 2015 includes only mechanical restraints. The Hospital's restraint policy has been revised to consider a physical hold a restraint and data as of April 2015 reflects this change. The duration of each physical hold event is counted as one (1) minute as a physical hold is ordered/used only as a temporary intervention that lasts less than a minute to break up any physical altercations or to administer emergency medications.

Performance Related Information for Staff & Managers

5. Major Unusual Incidents by Incident Location/Unit

Data Source: UI DB

Updated as of 11/04/16

Category		May-16	Jun-16	Jul-16	Aug-16	Sep-16	Oct-16	Nov-16	Dec-16	Jan-17	Feb-17	Mar-17	Apr-17	Monthly Average	Total (12mths)	Percent
Total Unusual Incidents		200	193	172	167	197	167	175	163	201	167	145	140	174	2087	100%
Incident Location	1A	8	5	7	13	8	6	14	8	8	5	4	8	8	94	5%
	1B	14	12	12	8	13	9	8	12	14	9	7	6	10	124	6%
	1C	32	17	19	22	35	33	33	27	21	29	16	32	26	316	15%
	1D	30	22	25	20	14	24	20	21	20	23	24	20	22	263	13%
	1E	7	24	22	9	15	12	9	9	15	15	11	7	13	155	7%
	1F	17	22	15	32	41	18	14	28	26	28	14	9	22	264	13%
	1G	12	18	14	6	12	9	17	13	18	13	7	3	12	142	7%
	2A	9	7	1	3	0	0	2	1	4	1	6	4	3	38	2%
	2B	6	4	2	2	1	1	0	1	3	2	1	2	2	25	1%
	2C	14	12	8	15	14	6	5	8	14	3	4	9	9	112	5%
	2D	18	20	15	17	13	30	18	16	17	18	20	9	18	211	10%
	TLC	21	18	16	13	15	10	24	9	24	13	19	15	16	197	9%
	Other	12	12	16	7	16	9	11	10	17	8	12	16	12	146	7%
Physical Assault		47	46	57	56	64	49	45	29	50	49	39	35	47	566	100%
Incident Location	1A	1	1	0	1	4	0	3	1	0	1	0	1	1	13	2%
	1B	2	1	2	2	5	2	3	0	2	0	1	1	2	21	4%
	1C	8	4	11	7	11	12	11	10	5	10	3	9	8	101	18%
	1D	7	5	9	7	5	9	2	6	6	7	12	6	7	81	14%
	1E	6	9	7	1	6	2	6	2	6	3	3	1	4	52	9%
	1F	2	8	8	18	14	8	3	3	9	11	2	1	7	87	15%
	1G	3	3	6	2	4	2	4	3	8	5	2	2	4	44	8%
	2A	1	0	0	0	0	0	1	0	0	0	0	0	0	2	0%
	2B	0	0	1	2	0	0	0	0	0	0	0	0	0	3	1%
	2C	4	2	2	6	5	3	1	1	5	0	0	3	3	32	6%
	2D	8	4	6	8	4	10	3	2	4	5	10	4	6	68	12%
	TLC - Intensive	4	7	3	1	1	1	0	0	1	3	4	5	3	30	5%
	TLC - Transitional	1	1	2	0	3	0	7	0	3	3	1	1	2	22	4%
	Other	0	1	0	1	2	0	1	1	1	1	1	1	1	10	2%

Performance Related Information for Staff & Managers

5. Major Unusual Incidents by Incident Location/Unit

Data Source: UI DB

Updated as of 11/04/16

Category		May-16	Jun-16	Jul-16	Aug-16	Sep-16	Oct-16	Nov-16	Dec-16	Jan-17	Feb-17	Mar-17	Apr-17	Monthly Average	Total (12mths)	Percent
Aggressive Behavior		74	58	53	51	71	63	70	66	77	65	46	54	62	748	100%
Incident Location	1A	0	0	1	2	0	1	1	0	2	0	0	0	1	7	1%
	1B	2	0	5	2	1	0	2	2	4	3	0	0	2	21	4%
	1C	14	8	3	9	14	14	17	12	13	13	11	17	12	145	26%
	1D	19	14	12	8	6	13	13	9	8	14	6	11	11	133	23%
	1E	1	2	8	3	5	5	1	4	5	8	4	3	4	49	9%
	1F	6	10	6	9	15	4	9	18	16	12	7	5	10	117	21%
	1G	3	7	3	1	7	5	8	6	5	6	3	1	5	55	10%
	2A	4	1	1	2	0	0	0	0	1	0	2	2	1	13	2%
	2B	3	0	1	0	1	0	0	1	1	0	0	0	1	7	1%
	2C	7	5	1	6	7	1	2	1	5	0	1	4	3	40	7%
	2D	6	5	4	5	4	14	9	10	10	7	4	4	7	82	14%
	TLC - Intensive	0	2	4	0	7	4	4	1	4	1	2	1	3	30	5%
	TLC - Transitional	7	4	1	2	0	1	2	2	2	1	5	2	2	29	5%
	Other	2	0	3	2	4	1	2	0	1	0	1	4	2	20	4%
Psych Emergency		31	27	23	34	41	46	48	47	49	56	27	48	40	477	100%
Incident Location	1A	0	0	0	0	0	0	0	0	1	1	0	0	0	2	0%
	1B	0	0	0	0	0	0	0	0	2	1	0	0	0	3	1%
	1C	7	6	3	8	9	12	19	12	8	16	4	23	11	127	22%
	1D	8	7	4	3	5	14	9	11	4	14	9	9	8	97	17%
	1E	3	6	7	1	3	7	2	3	3	5	2	3	4	45	8%
	1F	2	3	5	14	12	6	4	9	12	10	4	3	7	84	15%
	1G	0	1	1	0	5	4	6	6	10	4	3	2	4	42	7%
	2A	0	0	0	0	0	0	0	0	0	0	0	0	0	0	0%
	2B	1	0	1	1	0	0	0	0	0	0	0	0	0	3	1%
	2C	1	2	1	4	4	0	1	0	4	0	0	2	2	19	3%
	2D	4	1	0	3	1	3	7	5	4	4	4	5	3	41	7%
	TLC - Intensive	2	1	0	0	1	0	0	0	0	0	0	1	0	5	1%
	TLC - Transitional	2	0	1	0	1	0	0	1	1	1	1	0	1	8	1%
	Other	1	0	0	0	0	0	0	0	0	0	0	0	0	1	0%

Performance Related Information for Staff & Managers

5. Major Unusual Incidents by Incident Location/Unit

Data Source: UI DB

Updated as of 11/04/16

Category		May-16	Jun-16	Jul-16	Aug-16	Sep-16	Oct-16	Nov-16	Dec-16	Jan-17	Feb-17	Mar-17	Apr-17	Monthly Average	Total (12mths)	Percent
Fall		31	36	24	21	24	29	20	22	26	11	14	14	23	272	100%
Incident Location	1A	2	4	5	7	1	5	11	4	2	0	1	4	4	46	17%
	1B	8	8	3	2	5	4	0	5	3	2	1	0	3	41	15%
	1C	2	2	0	2	4	3	2	1	1	1	1	1	2	20	7%
	1D	0	0	5	0	0	3	1	2	2	0	1	1	1	15	6%
	1E	3	3	2	0	0	1	0	2	2	2	3	1	2	19	7%
	1F	2	4	1	1	7	5	1	1	2	2	1	1	2	28	10%
	1G	5	3	2	1	0	1	0	1	2	0	0	0	1	15	6%
	2A	0	0	0	0	0	0	0	0	0	1	1	1	1	4	1%
	2B	3	1	0	0	0	0	0	0	0	1	0	1	2	8	3%
	2C	0	2	0	5	0	1	1	0	0	0	0	1	1	10	4%
	2D	2	4	2	1	4	3	0	1	2	2	3	0	2	24	9%
	TLC - Intensive	1	1	2	1	1	0	1	0	1	0	0	0	1	8	3%
	TLC - Transitional	0	0	1	1	1	2	3	2	1	1	1	0	1	13	5%
	Other	3	4	1	0	1	1	0	3	6	0	0	2	2	21	8%
Physical Injury		30	29	31	30	30	41	37	23	29	23	18	24	29	345	100%
Incident Location	1A	0	0	0	2	2	1	3	2	0	1	0	4	1	15	4%
	1B	2	2	1	1	2	1	2	0	2	1	1	0	1	15	4%
	1C	9	1	4	4	5	9	6	7	5	8	2	4	5	64	19%
	1D	4	3	6	3	5	8	4	5	2	2	4	2	4	48	14%
	1E	2	8	6	2	3	3	2	0	1	2	2	2	3	33	10%
	1F	2	4	1	5	4	6	2	1	2	3	1	1	3	32	9%
	1G	1	2	2	2	2	2	4	3	6	1	3	1	2	29	8%
	2A	0	0	0	0	0	0	0	0	0	0	0	0	0	0	0%
	2B	0	1	0	0	0	0	0	0	0	0	0	0	0	1	0%
	2C	0	2	2	5	3	1	1	2	2	0	0	3	2	21	6%
	2D	2	0	5	5	3	6	5	1	3	2	3	2	3	37	11%
	TLC - Intensive	2	3	1	0	1	0	5	0	1	2	1	2	2	18	5%
	TLC - Transitional	1	0	2	0	0	1	1	1	0	0	1	0	1	7	2%
	Other	5	3	1	1	0	3	2	1	5	1	0	3	2	25	7%

* Not every incident is a major incident. This counts only those incidents that were classified to be major based on the policy.

Performance Related Information for Staff & Managers

6A. Demographic Information of Individuals in Care

Data Source: Avatar

Updated as of 05/25/17 #####

Category	Sub-group	May-16	Jun-16	Jul-16	Aug-16	Sep-16	Oct-16	Nov-16	Dec-16	Jan-17	Feb-17	Mar-17	Apr-17	Monthly Average	Percent*
Total Active (on Roll) at End of Month*		277	270	259	267	270	267	269	268	270	263	265	261	267	
Gender	Female	89	83	74	78	76	74	76	73	77	74	74	74	77	28.8%
	Male	188	186	185	189	194	193	193	195	193	189	191	187	190	71.2%
Age	Median Age (Years)	55 yrs	54 yrs	54 yrs	54 yrs	54 yrs	54 yrs	55 yrs	55 yrs	55 yrs	55 yrs	55 yrs	55 yrs	55 yrs	Figure 24
	<30 years old	34	26	31	31	35	36	33	31	31	32	35	31	32	12.0%
	>=30 and <40 years old	45	46	45	48	48	48	43	40	39	36	36	37	43	15.9%
	>=40 and <50 years old	26	29	23	27	26	23	25	27	25	30	30	27	27	9.9%
	>=50 and <60 years old	62	65	60	64	62	60	64	68	73	65	66	66	65	24.2%
	>=60 years old	110	103	100	97	99	100	104	102	102	100	98	100	101	37.9%
Legal Status of Individuals on Roll at End of Month	Emergency	20	18	14	16	15	12	12	13	11	13	12	11	14	5.2%
	Inpatient Commitment	34	34	32	34	35	32	32	34	37	37	40	38	35	13.1%
	Outpatient Commitment	30	29	26	22	22	29	27	25	22	20	20	20	24	9.1%
	Voluntary	39	37	39	34	34	31	31	27	27	25	25	25	31	11.7%
	Non-Protesting	0	0	0	0	0	0	0	0	0	0	0	0	0	0.0%
	Civil Sub-total	123	118	111	106	106	104	102	99	97	95	97	94	104	39.1%
	DC Exam	38	45	47	49	45	44	50	55	59	60	62	58	51	19.1%
	Mentally Incompetent	39	32	30	41	48	46	42	39	39	36	34	37	39	14.4%
	Forensic Pre-trial Sub-total	77	77	77	90	93	90	92	94	98	96	96	95	90	33.5%
	NGBRI - DC	66	64	61	61	62	63	65	65	65	62	62	62	63	23.6%
	NGBRI - US	6	6	6	6	5	5	5	5	5	5	5	5	5	2.0%
	NGBRI - VI	1	1	1	1	1	1	1	1	1	1	1	1	1	0.4%
	Dual Commitment	0	0	0	0	0	1	1	1	1	1	1	1	1	0.2%
Post Trial Mental Exam PTME	1	0	0	0	0	0	0	0	0	0	0	0	0	0.0%	
Sexual Psychopath (Miller Act)	3	3	3	3	3	3	3	3	3	3	3	3	3	1.1%	
Forensic Post-trial Sub-total	77	74	71	71	71	73	75	75	75	72	72	72	73	27.4%	
Length of Stay	<30 Days	36	34	30	34	31	37	35	28	37	28	31	31	33	12.2%
	>=30 ~ <365 Days	85	85	84	90	99	94	97	108	102	106	107	105	97	36.2%
	>= 1 Year & < 2 Years	36	30	28	28	26	25	26	24	27	24	23	19	26	9.9%
	>= 2 Years & < 5 Years	41	42	40	38	38	35	35	33	31	33	33	36	36	13.6%
	>= 5 Years & < 20 Years	45	44	43	43	44	44	44	43	41	40	39	38	42	15.8%
	>= 20 Years	34	34	34	34	32	32	32	32	32	32	32	32	33	12.2%
	Median LOS (Days)	475 d	475 d	506 d	478 d	452 d	406 d	373 d	348 d	280 d	300 d	316 d	341 d	396 d	Figure 25
	Median LOS - Civil	627 d	632 d	637 d	694 d	622 d	620 d	650 d	604 d	592 d	526 d	444 d	498 d	595 d	
	Median LOS - Pre-trial	61 d	57 d	52 d	63 d	62 d	69 d	71 d	81 d	86 d	95 d	81 d	79 d	71 d	
	Median LOS - Post-trial	3998 d	4384 d	5534 d	4565 d	4567 d	4414 d	4181 d	4212 d	4243 d	4627 d	4658 d	4688 d	4506 d	
	Average LOS (Days)	2355 d	2383 d	2461 d	2397 d	2302 d	2324 d	2315 d	2310 d	2277 d	2304 d	2256 d	2296 d	2332 d	
Average LOS - Civil	1708 d	1741 d	1829 d	1913 d	1826 d	1830 d	1858 d	1850 d	1826 d	1750 d	1596 d	1658 d	1782 d		
Average LOS - Pre-trial	147 d	124 d	122 d	125 d	135 d	139 d	143 d	154 d	155 d	168 d	179 d	185 d	148 d		
Average LOS - Post-trial	5510 d	5755 d	5986 d	5998 d	5852 d	5722 d	5600 d	5621 d	5635 d	5884 d	5915 d	5913 d	5783 d		

* Counts the total number of individuals who are on the hospital roll at end of each month. This number serves as denominator to calculate percentage of each group.

Performance Related Information for Staff & Managers

6B. Demographic Information of Individuals in Care

Data Source: Avatar

Updated as of 05/25/17

Category	Sub-group	May-16	Jun-16	Jul-16	Aug-16	Sep-16	Oct-16	Nov-16	Dec-16	Jan-17	Feb-17	Mar-17	Apr-17	Monthly Average	Percent*
Total Active (on Roll) at End of Month*		277	270	259	267	270	267	269	268	270	263	265	261	267	
Gender	Female	32%	31%	29%	29%	28%	28%	28%	27%	29%	28%	28%	28%	29%	
	Male	68%	69%	71%	71%	72%	72%	72%	73%	71%	72%	72%	72%	71%	
Age	Median Age (Years)	55 yrs	54 yrs	54 yrs	54 yrs	54 yrs	54 yrs	55 yrs	55 yrs	55 yrs	55 yrs	55 yrs	55 yrs	55 yrs	
	<30 yrs	12%	10%	12%	12%	13%	13%	12%	12%	11%	12%	13%	12%	12%	
	>=30 and <40 yrs	16%	17%	17%	18%	18%	18%	16%	15%	14%	14%	14%	14%	16%	
	>=40 and <50 yrs	9%	11%	9%	10%	10%	9%	9%	10%	9%	11%	11%	10%	10%	
	>=50 and <60 yrs	22%	24%	23%	24%	23%	22%	24%	25%	27%	25%	25%	25%	24%	
	>=60 yrs	40%	38%	39%	36%	37%	37%	39%	38%	38%	38%	37%	38%	38%	
Legal Status of Individuals on Roll at End of Month	Emergency	7%	7%	5%	6%	6%	4%	4%	5%	4%	5%	5%	4%	5%	
	Inpatient Commitment	12%	13%	12%	13%	13%	12%	12%	13%	14%	14%	15%	15%	13%	
	Outpatient Commitment	11%	11%	10%	8%	8%	11%	10%	9%	8%	8%	8%	8%	9%	
	Voluntary	14%	14%	15%	13%	13%	12%	12%	10%	10%	10%	9%	10%	12%	
	Non-Protesting	0%	0%	0%	0%	0%	0%	0%	0%	0%	0%	0%	0%	0%	
	Civil Sub-total	44%	44%	43%	40%	39%	39%	38%	37%	36%	36%	37%	36%	39%	
	DC Exam	14%	17%	18%	18%	17%	16%	19%	21%	22%	23%	23%	22%	19%	
	Mentally Incompetent	14%	12%	12%	15%	18%	17%	16%	15%	14%	14%	13%	14%	14%	
	Forensic Pre-trial Sub-total	28%	29%	30%	34%	34%	34%	34%	35%	36%	37%	36%	36%	34%	
	NGBRI - DC	24%	24%	24%	23%	23%	24%	24%	24%	24%	24%	23%	24%	24%	
	NGBRI - US	2%	2%	2%	2%	2%	2%	2%	2%	2%	2%	2%	2%	2%	
	NGBRI - VI	0%	0%	0%	0%	0%	0%	0%	0%	0%	0%	0%	0%	0%	
	Dual Commitment	0%	0%	0%	0%	0%	0%	0%	0%	0%	0%	0%	0%	0%	
	Sexual Psychopath (Miller Act)	1%	1%	1%	1%	1%	1%	1%	1%	1%	1%	1%	1%	1%	
Forensic Post-trial Sub-total	28%	27%	27%	27%	26%	27%	28%	28%	28%	27%	27%	28%	27%		
Length of Stay	Median LOS (Days)	475 d	475 d	506 d	478 d	452 d	406 d	373 d	348 d	280 d	300 d	316 d	341 d	396 d	
	Average LOS (Days)	2355 d	2383 d	2461 d	2397 d	2302 d	2324 d	2315 d	2310 d	2277 d	2304 d	2256 d	2296 d	2332 d	
	<30 days	13%	13%	12%	13%	11%	14%	13%	10%	14%	11%	12%	12%	12%	
	>=30 days & <365 days	31%	31%	32%	34%	37%	35%	36%	40%	38%	40%	40%	40%	36%	
	>= 1 year & < 2 years	13%	11%	11%	10%	10%	9%	10%	9%	10%	9%	9%	7%	10%	
	>= 2 years & < 5 years	15%	16%	15%	14%	14%	13%	13%	12%	11%	13%	12%	14%	14%	
	>= 5 years & < 20 years	16%	16%	17%	16%	16%	16%	16%	16%	15%	15%	15%	15%	16%	
>= 20 years	12%	13%	13%	13%	12%	12%	12%	12%	12%	12%	12%	12%	12%		

* Counts the total number of individuals who are on the hospital roll at end of each month. This number serves as denominator to calculate percentage of each group.