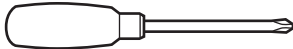
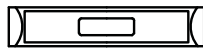


phillips screwdriver



level



! Tools required:

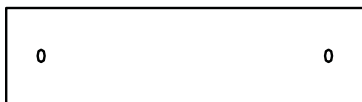
! Do not throw away packaging materials until assembly is complete.

! Assemble this item on a soft surface, such as cardboard or carpet, to protect finish.

! Proper assembly of this item requires 2 people.

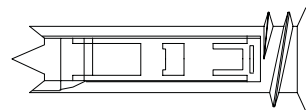
Parts:

A



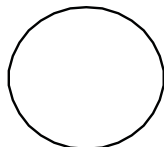
paper template x

B



drywall toggle anchor 2x

C



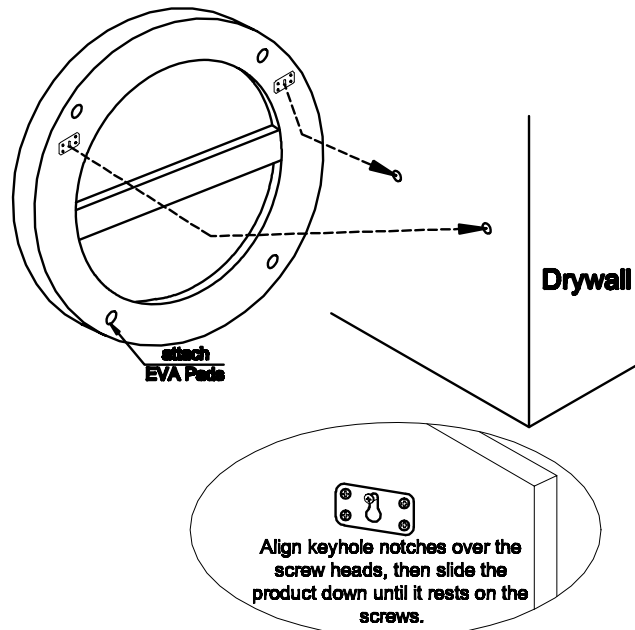
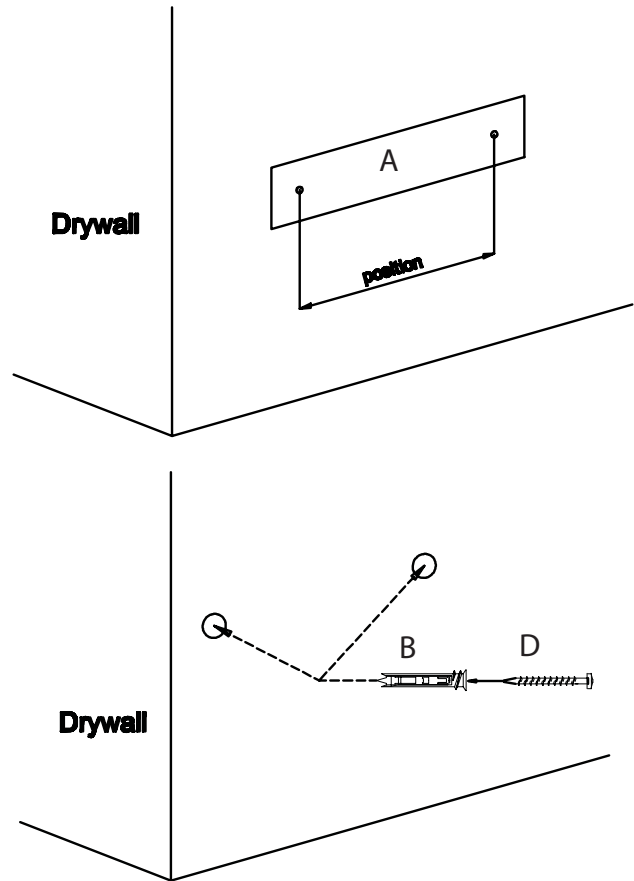
eva pad 4x

D



screw 2x

1. Place the template at the desired location on wall and ensure that the template is level. Using a pencil, mark the locations on the wall as shown. This is where the hardware will be inserted.
2. Using a Philip's head screwdriver, insert the drywall toggle anchors (A) into the wall at the insertion points. Press and turn clockwise until anchors are flush with the wall.
3. Insert screws (B) into the anchors or at the insertion points, leaving approximately 1/2" between the back of the screw head and the wall.
4. Align keyhole notches over the screw heads.
5. Slide the mirror down until it rests on the screws. Tighten or loosen screws as needed to fit the shelf snugly against the wall.



CARE INSTRUCTIONS

Hardware may loosen overtime. Periodically check that all connections are tight.
Wipe with a soft, dry cloth. To protect finish, avoid the use of chemicals and household cleaners.