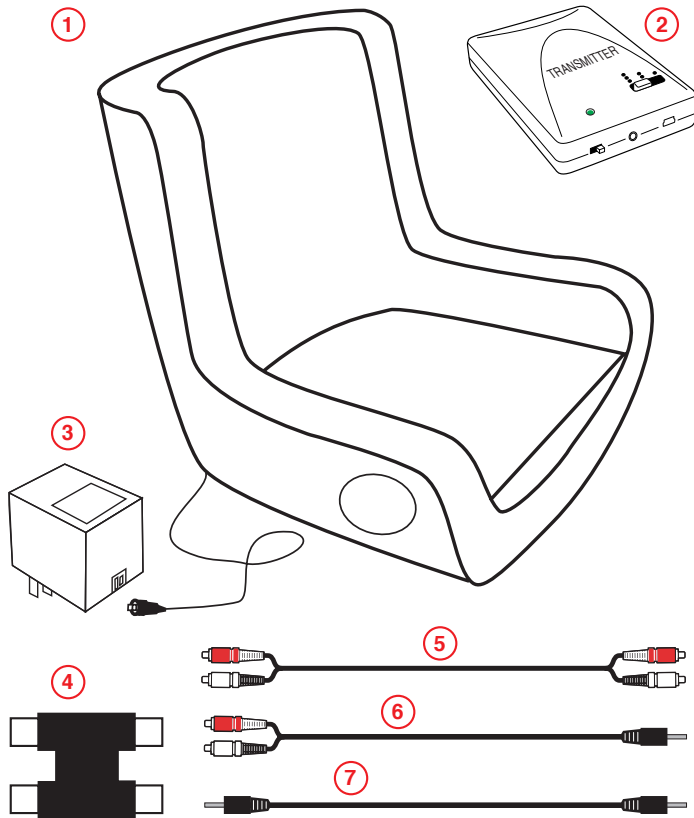


PARTS



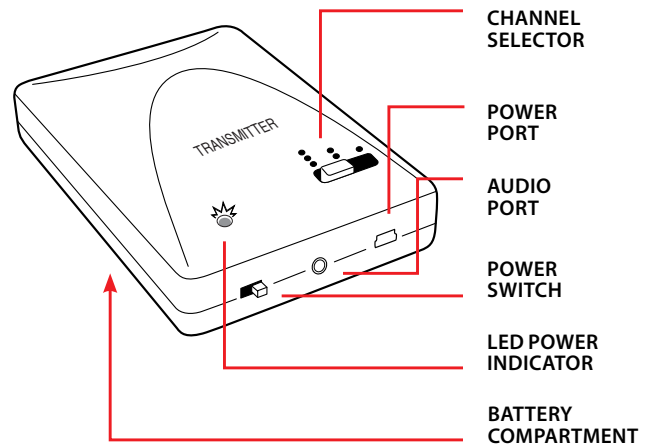
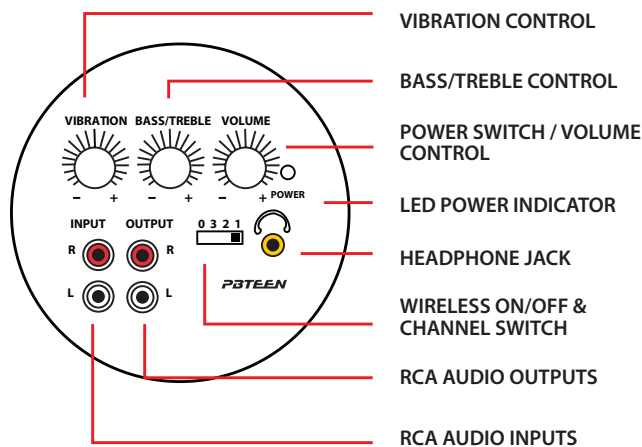
- 1) iCHAIR
- 2) WIRELESS TRANSMITTER (4 AA batteries required)
- 3) POWER ADAPTOR
- 4) RCA AUDIO COUPLER
- 5) RCA CORD (audio left & right channel connectors)
- 6) RCA TO MINI AUDIO CORD (audio left & right channel connectors to headphone jack)
- 7) AUDIO CORD

System Specifications

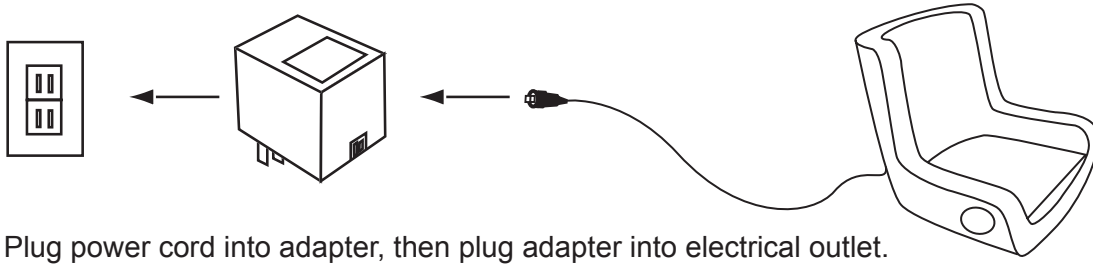
Dimensions: 37"W x 29"L x 31"H
Weight: 73 lbs

2 - 3" speakers @ 10W 4 Ohms
1 - 3" speakers @ 15W 4 Ohms
1 - 12v AC 2500mA power adapter

DASHBOARD CONTROL PANEL & WIRELESS TRANSMITTER



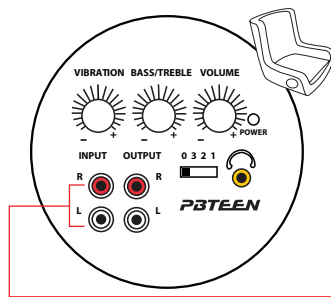
ASSEMBLY



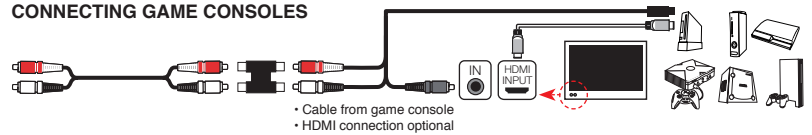
Plug power cord into adapter, then plug adapter into electrical outlet.

CONNECTION

Direct Connection



CONNECTING GAME CONSOLES



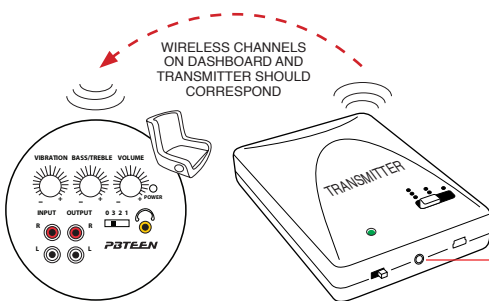
CONNECTING TV / DVD



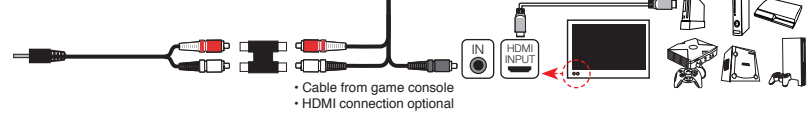
CONNECTING HANDHELD / MP3 / PORTABLE DEVICES



Wireless Connection



CONNECTING GAME CONSOLES



CONNECTING TV / DVD



CONNECTING HANDHELD / MP3 / PORTABLE DEVICES



OPERATION

To link iChairs together, plug RCA cable into audio outputs of first iChair and into audio inputs of second chair. OR, if using the wireless feature, change the wireless channel of every BoomChair® to the corresponding number of dots on the Transmitter.

To power, turn volume knob clockwise. This will also control the volume level.

