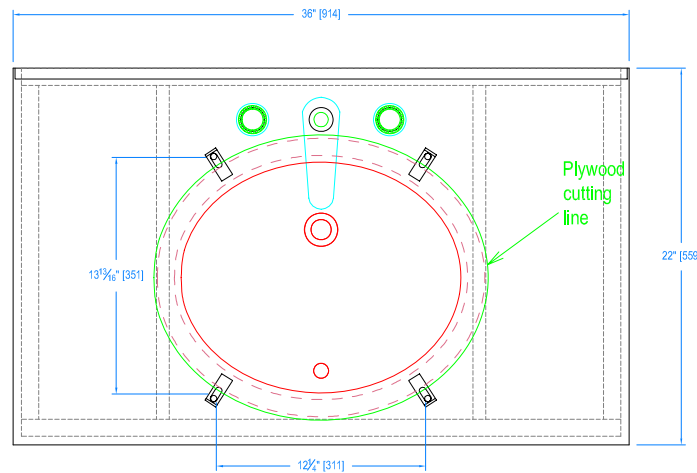
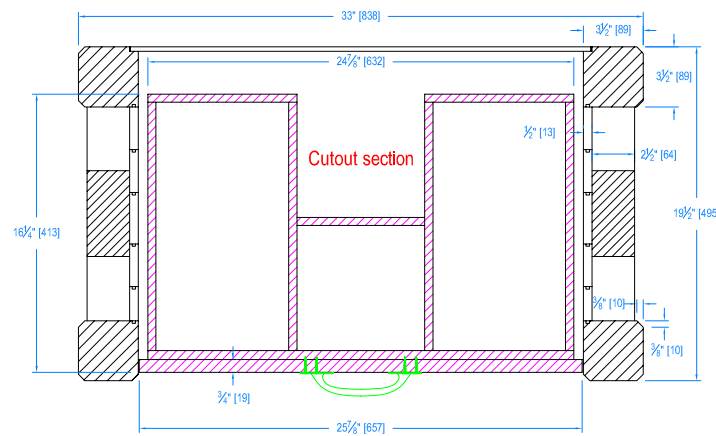


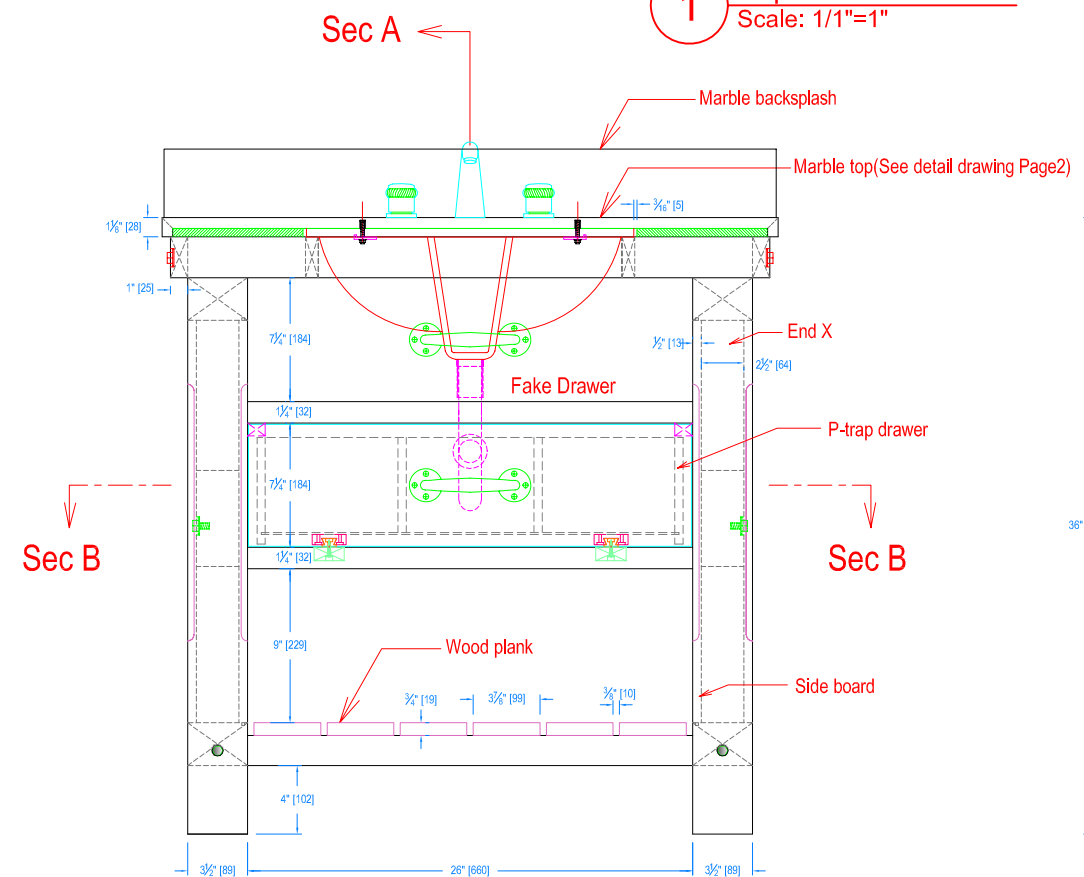
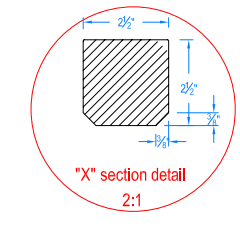
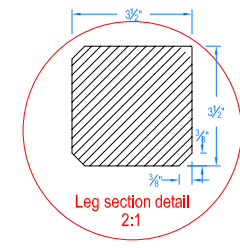
Benchwright Small Console with single sink



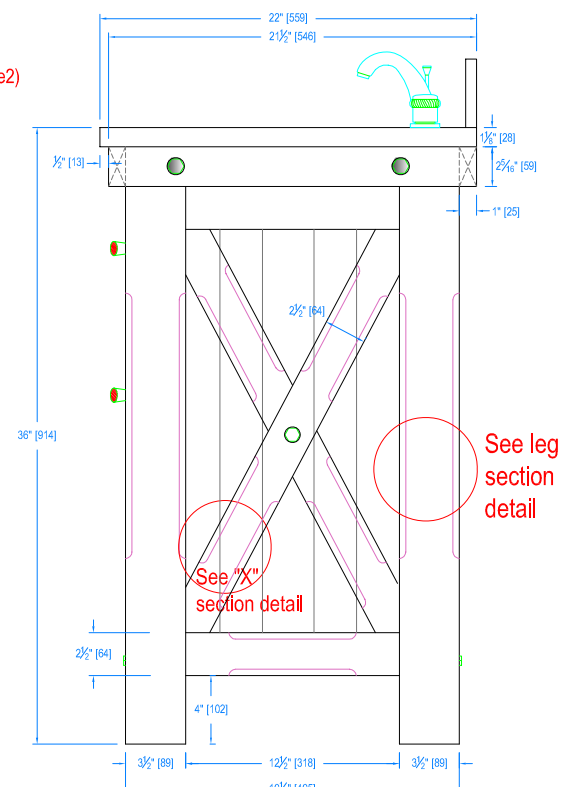
1 Top View
Scale: 1/1"=1"



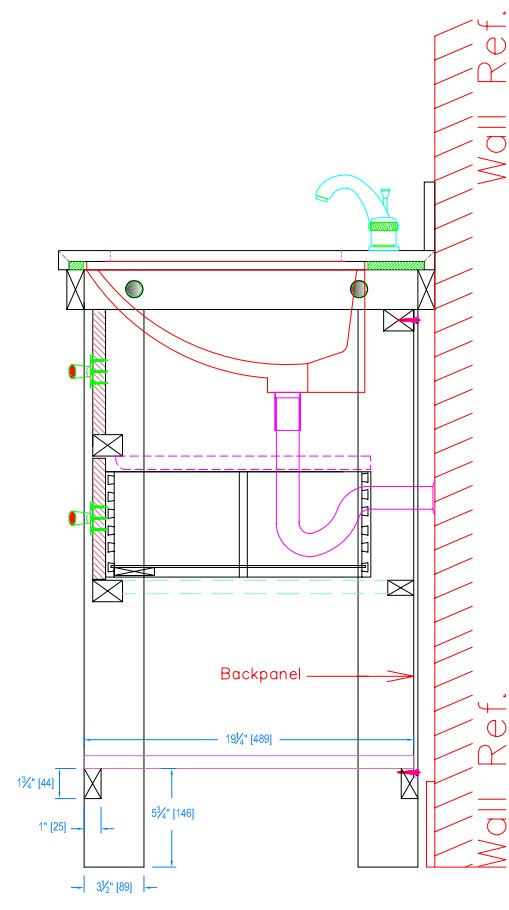
5 Section BB
Scale: 1/1"=1"



2 Front View
Scale: 1/1"=1"



3 Right View
Scale: 1/1"=1"



4 Section AA
Scale: 1/1"=1"

- Revision - 2 (Oct.24.2011)
1.change top thickness to 28mm from 32mm, add construction details of marble top.
- Revision R3 2011-11-11
2. Add marble backsplash on marble top.
- Revision R4 2011.12.15
1. Reduce thickness of side panel to 1/2" thick
2. Reduce thickness of shelf support to 1" thick
3. Remove metal towel bars.
4. Increase depth of base to 21.5" from 21" so the wooden rail under the marble top can meet the wall when installed.
- Revision-5 (2012.1.06)
1. Remove adj.shelf and add P-trap drawer under the fake drawer
- Revision-6 (2012.1.11)
1. Decrease the height of fake drawer and P-trap drawer by 3/4"
- Revision-7 (2012.2.27)
1. Make the gap distance between sink and plywood underneath of marble top is 5mm wide all around the edge of sink



Designer	Date Origin / Initials	Date Rev/ Initials	Item Description	Dimension	Page	Released for sample approval
Richard	2011-09-01	2012-2-27	Benchwright Small Console with single sink	36" x 22" x 36" H	1 of 2	Released for standard production

