

# P O T T E R Y B A R N

## Madeline chandelier Wire Cord and Plug-in Assembly and Installation Instructions

### CAUTION:

- **Do not install into a ceiling that contains radiant heating.** Also note that the Toggle Hooks (O) or Metal Hooks (P) that are included with this **Madeline chandelier** is used to support the Chain (K) only. Do not use the electric cord only (without chain) to support the weight of the lighting fixture.

### Important Safety Instructions:

- The ceiling Toggle Hooks (O) are meant for drywall mounting only. Metal Hooks (P) are meant for direct wood or ceiling-joint mounting (or through drywall to wood joist) only. If the ceiling is made from concrete, brick or plaster, please consult your local hardware store for assistance.
- The installation is not to be installed on a radiant-heating ceiling.
- Wood ceiling joist mounting is recommended. Use proper hardware for your ceiling type.
- The Toggle Hooks (O) or Metal Hooks (P) is used to hold the Chain (K) only and not the electric cord. Do not use the electric cord to support the weight of the chandelier.
- For your safety, it is strongly recommended that two people install the lighting fixture.
- This 3 wire cord set lighting fixture is capable of being used as a fixed luminaire (hardwired) when used with the appropriate Pottery Barn conversion kit (included); professional installation is recommended.
- These instructions are provided for your safety. It is important that they are read carefully and completely before assembling and installing the fixture.
- This fixture has been rated for up to six (6) **25-Watt maximum TYPE B** (not included) or six (6) **5-Watt compact fluorescent light bulbs** (not included) or six (6) 4.5 watt LED bulb (not included) to avoid the risk of fire, do not exceed the recommended lamp wattage.
- The lighting fixture is meant for indoor use, DRY LOCATIONS ONLY.
- **Save these instructions.**

### Warning:

- **To reduce the risk of fire, electrical shock or personal injury, always turn off and unplug light fixture and allow it to cool prior to replacing light bulb.**
- **Do not touch bulb when fixture is turned on. Do not look directly at lit bulb.**
- **Keep flammable materials away from lit bulb.**

### Pre-assembly:

- Remove all parts and hardware from box along with any plastic protective packaging.
- Do not discard any contents until after assembly is complete to avoid accidentally discarding small parts or hardware.
- For your safety and convenience, assembly by two people is recommended.

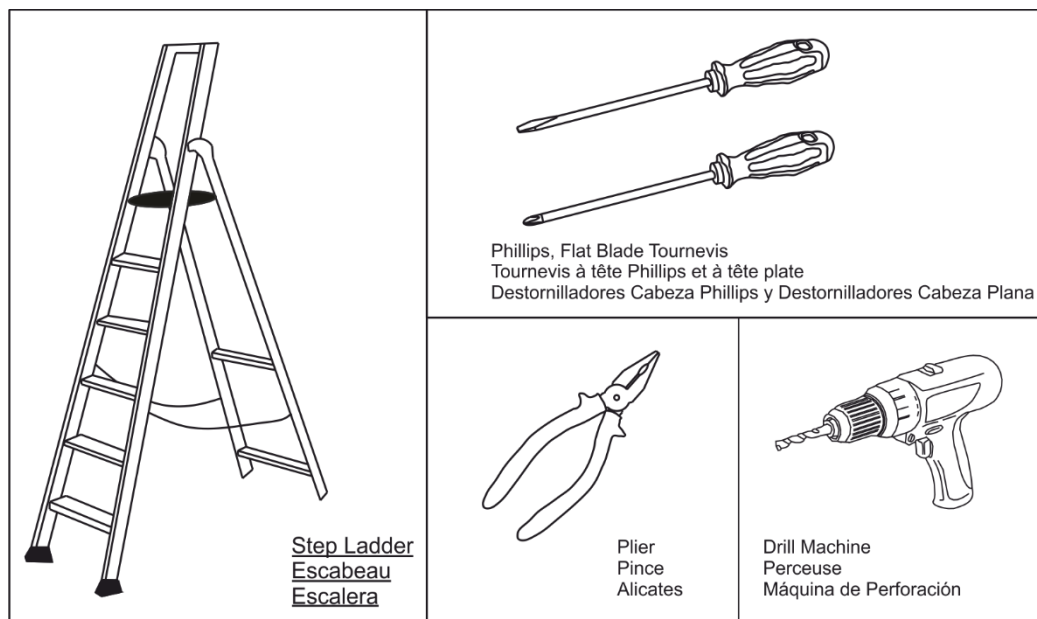
**Parts Enclosed:**

- (1) 3-Wire Cord with Switch (Q)
- (1) Chain (K)
- (1) Fixture Loop (L)
- (1) Light Fixture (M)

**Hardware Included:**

- (2) Toggle Hooks (O)
- (2) Metal Hooks (P)

**TOOLS REQUIRED (not included):** Ladder, Pliers, Drill & Drill bit.

**Assembly & Installation Instructions:**

1. Carefully unpack all fixture parts and hardware and lay them out on a clear workspace.
2. Determine the desired mounting location of the Bellora Chandelier on the ceiling making sure that an outlet is located within reach.
3. If needed, use a “stud finder” (not included) to locate the ceiling wooden joists and mark their locations on the ceiling using a pencil or a piece of tape.
4. Thread the Fixture Loop (L) onto the top of the Light Fixture (M) and rotate the parts clockwise by hand until tight.
5. Using pliers, open the lowest end link of the Chain (K) and attach the open link to the Fixture Loop (L). Close the chain link around Fixture Loop (L) so that the chain is now securely connected to the Fixture Loop (L). Use a cloth or folded piece of paper between the pliers and the link to protect the finish of the link during bending.
6. Insert the Metal Hooks (P) into the ceiling joists at the desired locations. Rotate each hook clockwise while firmly pressing it into the ceiling. Tighten hooks securely into wood. If installing through drywall to wood joist, the threaded portion of each hook will drive itself into the drywall and then into the underlying wooden ceiling joist. Note: Pre-drilling a pilot hole at the marked locations will make installing the hooks easier.
7. If mounting into ceiling drywall only, use the **assembled** Toggle Hooks (O) inserted through two predrilled ceiling holes using the drill with appropriate size drill bit (one that is sized just large enough to make a hole that will allow passage of the wings of the toggle). Make sure the Toggle Hooks (O) are fully inserted into the ceiling and the toggle wings are open. Use your hand to rotate the Toggle Hooks in a clockwise direction until tight against ceiling.
8. Once the hooks are installed into the ceiling, position the chandelier’s Chain (K) onto the Metal Hooks (P) or the Toggle Hooks (O) depending upon mounting method as installed above.
9. Insert six (6) **25-Watt maximum TYPE B** bulbs(not included) or six (6) **5-Watt compact fluorescent light bulbs** (not included) or six (6) 4.5 watt LED bulbs (not included) into the sockets. **DO NOT EXCEED THE SPECIFIED WATTAGE.**

10. Plug fixture into the proper electrical outlet and test fixture.

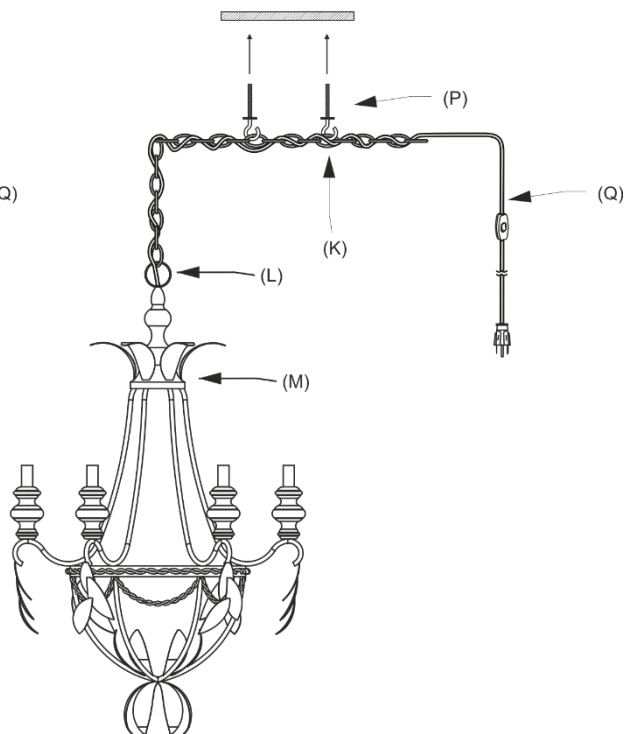
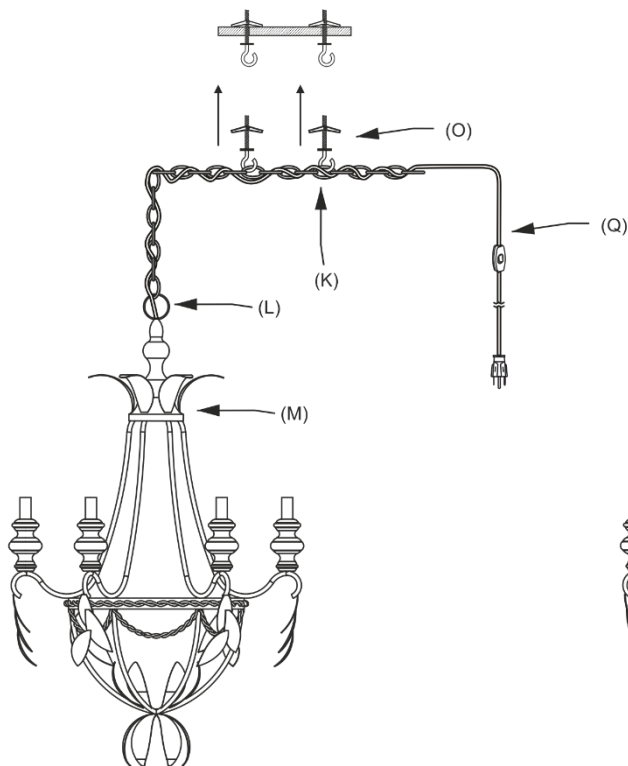
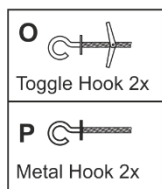
11. Installation is complete.

**Care instructions:**

- Wipe clean with a soft, dry cloth or static duster.
- Always avoid the use of harsh chemicals or abrasive cleaners as they may cause damage to the fixture's finish.

**FOR DRYWALL MOUNTING**

**FOR MOUNTING TO JOIST**



Thank you for your purchase

Stores | Catalog | [www.potterybarn.com](http://www.potterybarn.com)

USA 1.800.290.8181