

FOREO  
SWEDEN



# BEAR™ 2

ADVANCED MICROCURRENT FACIAL TONING DEVICE



[ONLINE MANUAL](#)

# FULL USER MANUAL

## GETTING STARTED

Congratulations on discovering smarter skincare with BEAR™ 2. Before you begin to enjoy all the benefits of sophisticated skincare technology in the comfort of your home, please take a few moments to carefully read the instructions in this manual.

Please **READ ALL INSTRUCTIONS BEFORE USE** and utilize this device only for its intended use as described in this manual.

**INTENDED USE:** BEAR™ 2 is intended for facial and neck stimulation, and is indicated for over-the-counter cosmetic use.

**⚠ WARNING:** NO MODIFICATION OF THIS EQUIPMENT IS ALLOWED.

## BEAR™ 2 OVERVIEW

Introducing the world's first FDA-cleared medical microcurrent device with Anti-Shock System™, and 4 revolutionary types of microcurrent. Lift and firm your facial muscles, revitalize and smooth your skin, sculpt and contour your complexion with this safe, painless and non-invasive alternative to facelifts and botox.

## GETTING TO KNOW BEAR™ 2

### FEATURES

#### MICROCURRENT SPHERES

Deliver microcurrent directly to skin for advanced anti-aging results

#### T-SONIC™ PULSATIONS

Enhance absorption of active ingredients in your skincare & gently massage face to boost radiance

#### SMART SWEDISH DESIGN

Lightweight and gently curved to fit the contours of your face and hand

#### ANTI-SHOCK SYSTEM

Scans skin's resistance to electricity & adjusts microcurrent for maximum comfort

#### BLUETOOTH INDICATOR LIGHT

Flashes to indicate when device is in Bluetooth pairing mode & when device needs to be charged

#### UNIVERSAL BUTTON

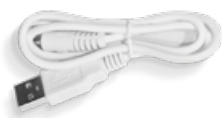
Turns device on/off, changes microcurrent intensity level, and puts device in Bluetooth pairing mode

#### 5 INTENSITY INDICATOR LIGHTS

Light up to indicate the microcurrent intensity level of your device

#### CHARGING PORT

Up to 300 minutes of use per USB charge



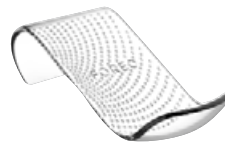
#### USB CHARGING CABLE

Charge anytime, anywhere with USB cable.



#### INTERACTIVE APP

Access video-guided treatments & a wider range of intensities.



#### STAND

Protects and displays your BEAR™ 2 device.



#### TRAVEL POUCH

Conveniently stores device for skincare on-the-go.

## TYPES OF MICROCURRENT

BEAR™ 2 is the only microcurrent device that features 4 types of microcurrent, unique to FOREO. Each has its own special benefit, and is implemented into the video-guided treatments on the app, for optimized results.



**Advanced Microcurrent™** - Steady current stimulates muscles to strengthen them, while tightening skin above.



**Lifting Microcurrent™** - Repeatedly staggers current from low to high frequency, gently coaxing muscles into naturally lifting, for a contoured look.



**Tapping Microcurrent™** - Quick and short waves of current flow through the upper layers of the skin, to brighten and plump.



**Sculpting Microcurrent™** - Channels microcurrent deeper into muscles to effectively tone them, for a firm & sculpted appearance.

## HOW TO USE BEAR™ 2

### UNLOCK YOUR DEVICE

Before first use, download the FOREO For You mobile app to unlock and register your device. Follow these simple steps;

1. Download the FOREO For You app on your mobile phone.
2. Log in to your account or sign up for a new one.
3. Add device (on the top of your screen).
4. Choose device series.
5. Press and hold the universal button to connect your device to the mobile app.
6. Fill in the purchase information.

[www.foreo.com/app](http://www.foreo.com/app)



### 1. APPLY SERUM

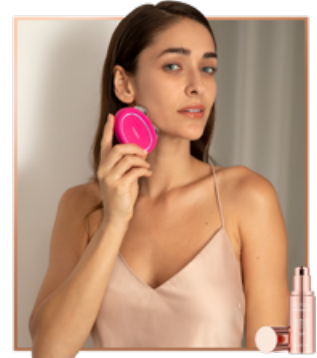
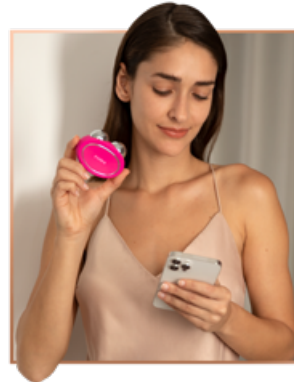
Make sure both your skin and BEAR™ device are clean and dry. Then apply FOREO SUPERCHARGED™ Serum evenly across all areas of the face / neck you wish to treat, leaving a thin mask-like layer on the surface of the skin.



### 2. SELECT PREFERENCES

Press the universal button to turn your BEAR™ device on. Adjust the microcurrent intensity by quick-pressing the button again, once for each level. Access guided treatment videos and more settings via the FOREO app.

**Note:** BEAR™ 2's default setting is 'Beginner Mode' (microcurrent intensity levels 1 - 5). If you wish to access 'Pro Mode' (microcurrent intensity levels 6 - 10), you can do so via 'Settings' in the app. Once you select 'Pro Mode', the intensity indicator lights on your device will refer to the Pro Mode levels (6 - 10).



### 3. TONE & LIFT

Lightly press both metallic spheres to your skin, and slowly glide the device upward and outward across your cheekbones and forehead, around your mouth and over your jawline and neck, as desired.

### THINGS TO NOTE:

- Microcurrent devices like BEAR™ 2 must be used with a conductive serum. For optimal results, we recommend using FOREO SUPERCHARGED™ Serum 2.0 — developed specifically for use with FOREO's microcurrent devices, and clinically proven to significantly increase type 1 collagen production.
- Leave a thin, mask-like layer of FOREO SUPERCHARGED™ Serum on skin, so the device can glide smoothly. If treating many areas in one session, you can apply the serum to each area before you use the device on that area.
- Never use microcurrent devices like BEAR™ 2 on the midline bone of the neck, or within the orbital bone.
- Make sure that both microcurrent spheres are touching your skin during your treatment. Always glide the device in upward and outward motions, from the center of your face toward your hairline.

## WARNINGS

### FOR OPTIMUM SAFETY:

- Toning with BEAR™ 2 should be comfortable – if you experience any discomfort or irritation, discontinue use immediately and consult a physician.
- Do not use on the chest / breast area, eye area (circular muscle within the orbital rim), mid-line (bone) of neck, or the genitals / groin area.
- Do not use over red skin, raised moles, major arteries (eg. carotid), enlarged capillaries, metal implants, infected areas, or areas with no feeling in them.
- Do not use the device to treat rosacea, moles, warts, open sores, cancerous lesions, or any skin condition.
- Do not use if you have any existing medical conditions such as epilepsy, a hemorrhagic disease, cancer, tumors, or perceptual disturbance.
- Do not use if you have had a laser treatment, chemical peel, or have any other form of injured or damaged skin.
- Do not use if you have had cosmetic surgery on your face.
- Do not use if you have any implanted medical device or any other electronic instrument or body aids.
- Electronic monitoring equipment, such as ECG monitors and ECG alarms, may not operate properly when the device is in use.
- BEAR™ 2 should not be used on, near, or by children or those with reduced physical and mental abilities. Close supervision is necessary when this device is used, cleaned or stored near children or those with reduced physical or mental abilities.
- The long-term effects of microcurrent are unknown.
- The safety of the device for use during pregnancy has not been established. If you are pregnant, consult your physician before using this device.
- If you have a skin condition or any medical concerns, please consult a physician before use.
- If you have suspected or diagnosed heart disease, follow precautions recommended by your physician.
- Exercise particular care when toning the under-eye regions and do not bring the device into contact with the eyelids or eyes themselves.
- There may be a perception of flashing lights during the use of your device, resulting from the stimulation of your optic nerve. If you notice this condition constantly without the use of your device, consult your physician.
- A slight tingling sensation may occur while using the device, which is normal and not cause for any concern. Lowering the intensity may reduce or eliminate this sensation.
- Given the efficiency of the FOREO toning routines, we recommend that you do not use BEAR™ 2 for more than 3 minutes at a time, per area.
- For reasons of hygiene, we do not recommend sharing your BEAR™ 2 with anyone else.
- Do not use while driving or operating heavy machinery.
- Do not use the device when it is plugged in.
- Do not insert any object into any opening of the device.
- Do not use the device if it is overheating or you suspect that it is malfunctioning.
- Avoid leaving your BEAR™ 2 in direct sunlight and never expose it to extreme heat or boiling water.
- BEAR™ 2 should be completely dry before activating the microcurrent function. Do not use the device if it has been submerged in water, and do not use with wet hands.
- This device should only be used with a SELV power adapter.
- It is recommended that IEC60950 standard power suppliers are used to charge the device.
- Before charging, make sure that the plug and socket are completely dry. Failure to do so may result in electric shock, short circuit, or fire.
- Do not use the device while charging. Discontinue use if this device or charger is not working properly or appears damaged in any way. Use the power cord supplied with your device only.
- The battery must be removed from the appliance before it is disposed of. The appliance must be disconnected from the supply mains when removing the battery, and the battery is to be disposed of safely.
- This product contains no serviceable parts.
- This device is intended for cosmetic use on the face and neck. Any harmful consequences resulting from misuse, application to other body areas, connection to improper voltage sources, dirty conductive solution or spheres, or any other improper applications are not the responsibility of FOREO.
- Use this device only for its intended use as described in this manual. If you do not find the answer to your specific question, or if you have any other questions regarding the device's operation, please visit [foreo.com/support](https://foreo.com/support)



## CLEANING YOUR BEAR™ 2

Always clean BEAR™ 2 thoroughly after use. Wash the metallic spheres and silicone surface with water and soap, then rinse with warm water. Pat dry with a lint-free, non-abrasive cloth or towel. After use, we recommend spraying the device with FOREO's Silicone Cleaning Spray and rinsing with warm water for optimal results.

**NOTE:** Never use cleaning products containing alcohol, petrol, or acetone, as they may irritate the skin and damage the silicone.

## TROUBLESHOOTING

*Precautions to be taken in the event of changes in the performance of BEAR™ 2.*

If BEAR™ 2 is not activated when pressing the universal button:

- Battery is empty. Recharge using USB charging cable for up to 1.5 hours until fully charged and then restart your device by holding down the universal button.

If BEAR™ 2 cannot be switched off and/or the universal button does not respond:

- Microprocessor is temporarily malfunctioning. Press and hold the universal button to restart the device.

If BEAR™ 2 won't sync to the FOREO For You app:

- Switch your Bluetooth off and then on again to try reconnecting.
- Close the FOREO For You app and then reopen it to start the process over.
- Check to see if the app needs to be updated in your mobile device's app store.

## WARRANTY TERMS & CONDITIONS

### REGISTER WARRANTY

To activate your 2-Year Limited Warranty, register through the FOREO For You app, or visit [foreo.com/product-registration](http://foreo.com/product-registration) for more information.

### 2-YEAR LIMITED WARRANTY

FOREO warrants this device for a period of TWO (2) YEARS after the original date of purchase against defects due to faulty workmanship or materials arising from Normal Use of the device. The warranty covers working parts that affect the function of the device. It does NOT cover cosmetic deterioration caused by fair wear and tear, or damage caused by accident, misuse or neglect. Any attempt to open or take apart the device (or its accessories) will void the warranty.

If you discover a defect and notify FOREO during the warranty period, FOREO will, at its discretion, replace the device free of charge. Claims under warranty must be supported by reasonable evidence that the date of the claim is within the warranty period. To validate your warranty, please keep your original purchase receipt together with these warranty conditions for the duration of the warranty period.

To claim your warranty, you must log in to your account at [www.foreo.com](http://www.foreo.com) and then select the option to make a warranty claim. Shipping costs are nonrefundable. This undertaking is in addition to your statutory rights as a consumer and does not affect those rights in any way.

## DISPOSAL INFORMATION

Disposal of old electronic equipment (applicable in the EU and other European countries with separate waste collection systems).



EUROPEAN  
CONFORMITY



PACKAGING IS MADE OF  
RECYCLABLE MATERIAL



UK DECLARATION  
OF CONFORMITY



TYPE BF  
APPLIED PART



GARBAGE WASTE  
ELECTRICAL & ELECTRONIC  
EQUIPMENT DIRECTIVE



CONSULT INSTRUCTIONS  
FOR USE

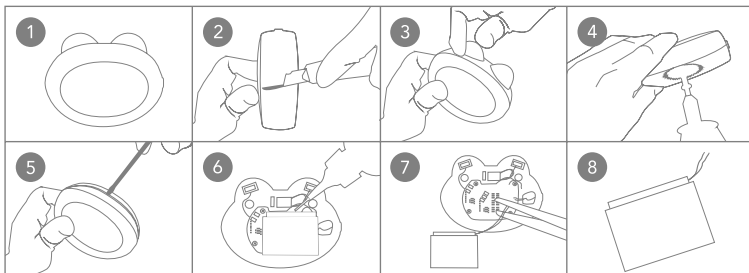
This device should not be treated as household waste, but rather be brought to the appropriate collection point for recycling of electrical and electronic equipment. By ensuring this device is disposed of correctly, you will help prevent the potential negative consequences for the environment and human health which could be caused by inappropriate waste handling of the device. The recycling of materials will also help conserve natural resources.

For more information about the recycling of your device, please contact your local household waste disposal service or your place of purchase.

## BATTERY REMOVAL

**NOTE:** This process is not reversible. Opening the device will void its warranty. This action must only be undertaken when the device is ready to be disposed of.

Because this device contains a lithium-ion battery, the battery must be removed before disposal and should not be thrown away with household waste. To remove the battery, cut and remove the silicone outer layer, unscrew the metal spheres, and cut the plastic shell along the crack. Next, pry the shell open, and separate the battery using a dispergator. Then cut the battery cable, remove the battery and dispose of it in accordance with your local environmental regulations. Wear gloves during this process for your safety. Detailed visual instructions are provided below.



## SPECIFICATIONS

MATERIALS:	Body-Safe Silicone, ABS, PC, Chrome Plated Zinc Alloy
COLOR:	Fuschia / Lavender / Evergreen
SIZE:	H64 x W79 x D39 mm
WEIGHT:	90g
BATTERY:	Li-ion 520mAh 3.7V
USAGE:	Up to 300 minutes of use per charge.
STANDBY:	90 days
FREQUENCY:	185 Hz
MAX NOISE LEVEL:	<50dB
INTERFACE:	1-button

**Disclaimer:** Users of this device do so at their own risk. Neither FOREO nor its retailers assume any responsibility or liability for any injuries or damages, physical or otherwise, resulting directly or indirectly from the use of this device. Furthermore, FOREO reserves the right to revise this publication and to make changes from time to time in the contents thereof without obligation to notify any person of such revision or changes.

**CAUTION:** Changes or modifications to this unit not expressly approved by the party responsible for compliance could void the user's authority to operate the equipment.

**NOTE:** This device complies with Part 15 of the FCC Rules. Operation is subject to the following two conditions:

- (1) This device may not cause harmful interference, and
- (2) This device must accept any interference received, including interference that may cause undesired operation

This device contains licence-exempt transmitter(s)/receiver(s) that comply with Innovation, Science and Economic Development Canada's licence-exempt RSS(s). Operation is subject to the following two conditions:

- (1) This device may not cause interference.
- (2) This device must accept any interference, including interference that may cause undesired operation of the device.

FOREO declares that this device is in compliance with Directive 2014/53/EU. The full text of the EU declaration of conformity for the product is available at [www.foreo.com/support](http://www.foreo.com/support).

Model may be changed for improvements without notice.

©2023 MANUFACTURED FOR: FOREO AB.

DESIGNED AND DEVELOPED BY: FOREO SWEDEN. ALL RIGHTS RESERVED.

IMPORTER AND DISTRIBUTOR:

EU: FOREO AB, KARLÄVAGEN 41, 114 31 STOCKHOLM, SWEDEN

US: FOREO INC., 1525 E. PAMA LANE, LAS VEGAS, NV 89119, USA.

AUS.: 6 PROHASKY STREET, PORT MELBOURNE, VIC, 3207 AUSTRALIA.

MANUFACTURED BY: VIS (SHANGHAI) TECHNOLOGY CO., LTD.

NO.58 LINSHENG ROAD, TINGLIN TOWN, JINSHAN DISTRICT, SHANGHAI, CHINA

**WWW.FOREO.COM**